



Full wwPDB X-ray Structure Validation Report ⓘ

Mar 9, 2018 – 10:00 am GMT

PDB ID : 4KCK
Title : Structure of neuronal nitric oxide synthase heme domain in complex with N-(3-(2-((3-(thiophene-2-carboximidamido)benzyl)amino)ethyl)phenyl)thiophene-2-carboximidamide
Authors : Li, H.; Poulos, T.L.
Deposited on : 2013-04-24
Resolution : 2.10 Å(reported)

This is a Full wwPDB X-ray Structure Validation Report for a publicly released PDB entry.

We welcome your comments at validation@mail.wwpdb.org

A user guide is available at

<https://www.wwpdb.org/validation/2017/XrayValidationReportHelp>

with specific help available everywhere you see the ⓘ symbol.

The following versions of software and data (see [references ⓘ](#)) were used in the production of this report:

MolProbity : 4.02b-467
Mogul : 1.7.3 (157068), CSD as539be (2018)
Xtriage (Phenix) : 1.13
EDS : trunk30967
Percentile statistics : 20171227.v01 (using entries in the PDB archive December 27th 2017)
Refmac : 5.8.0158
CCP4 : 7.0 (Gargrove)
Ideal geometry (proteins) : Engh & Huber (2001)
Ideal geometry (DNA, RNA) : Parkinson et al. (1996)
Validation Pipeline (wwPDB-VP) : trunk30967

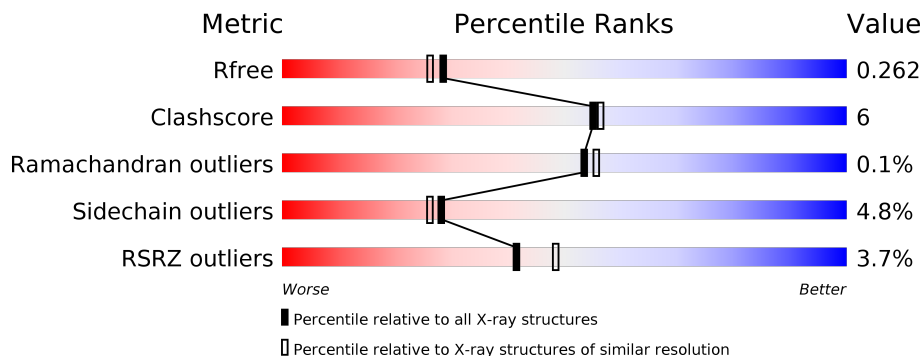
1 Overall quality at a glance

The following experimental techniques were used to determine the structure:

X-RAY DIFFRACTION

The reported resolution of this entry is 2.10 Å.

Percentile scores (ranging between 0-100) for global validation metrics of the entry are shown in the following graphic. The table shows the number of entries on which the scores are based.



Metric	Whole archive (#Entries)	Similar resolution (#Entries, resolution range(Å))
R_{free}	111664	4608 (2.10-2.10)
Clashscore	122126	5109 (2.10-2.10)
Ramachandran outliers	120053	5059 (2.10-2.10)
Sidechain outliers	120020	5060 (2.10-2.10)
RSRZ outliers	108989	4497 (2.10-2.10)

The table below summarises the geometric issues observed across the polymeric chains and their fit to the electron density. The red, orange, yellow and green segments on the lower bar indicate the fraction of residues that contain outliers for ≥ 3 , 2, 1 and 0 types of geometric quality criteria. A grey segment represents the fraction of residues that are not modelled. The numeric value for each fraction is indicated below the corresponding segment, with a dot representing fractions $\leq 5\%$. The upper red bar (where present) indicates the fraction of residues that have poor fit to the electron density. The numeric value is given above the bar.

Mol	Chain	Length	Quality of chain
1	A	422	<p>5% (poor fit), 79% (0-1 outliers), 15% (2-3 outliers), 1% (4+ outliers), 0% (not modelled)</p>
1	B	422	<p>2% (poor fit), 80% (0-1 outliers), 16% (2-3 outliers), 2% (4+ outliers), 0% (not modelled)</p>

2 Entry composition [i](#)

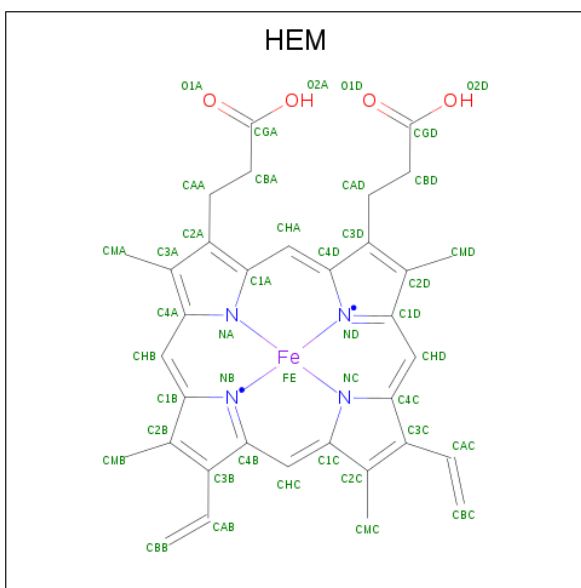
There are 7 unique types of molecules in this entry. The entry contains 7002 atoms, of which 0 are hydrogens and 0 are deuteriums.

In the tables below, the ZeroOcc column contains the number of atoms modelled with zero occupancy, the AltConf column contains the number of residues with at least one atom in alternate conformation and the Trace column contains the number of residues modelled with at most 2 atoms.

- Molecule 1 is a protein called Nitric oxide synthase, brain.

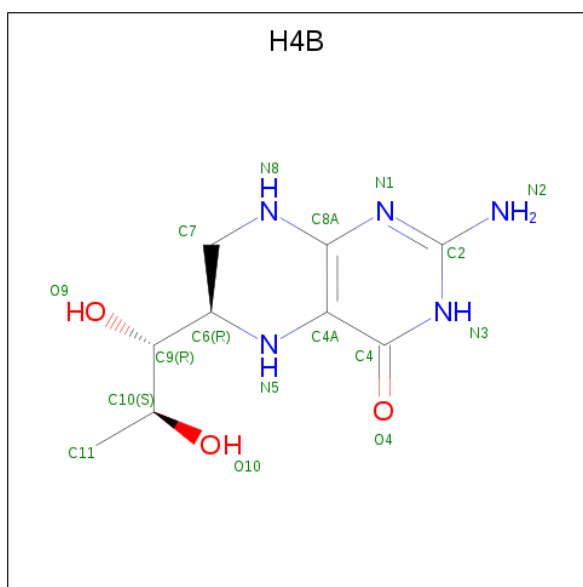
Mol	Chain	Residues	Atoms					ZeroOcc	AltConf	Trace
			Total	C	N	O	S			
1	A	407	Total 3313	C 2121	N 566	O 605	S 21	0	0	0
1	B	411	Total 3345	C 2140	N 574	O 610	S 21	0	0	0

- Molecule 2 is PROTOPORPHYRIN IX CONTAINING FE (three-letter code: HEM) (formula: $C_{34}H_{32}FeN_4O_4$).



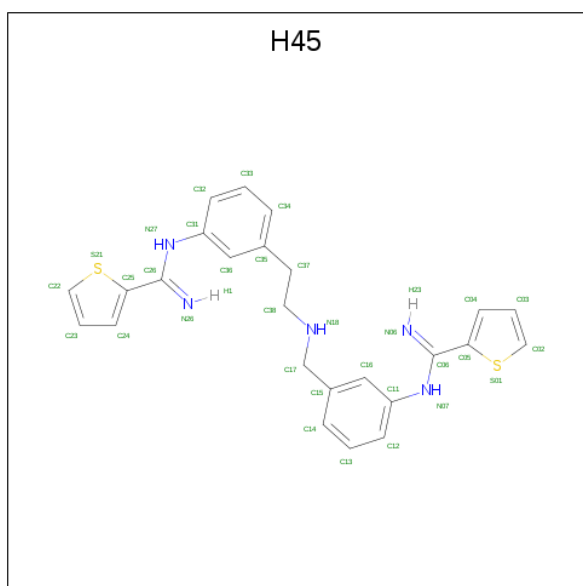
Mol	Chain	Residues	Atoms				ZeroOcc	AltConf	
			Total	C	Fe	N			O
2	A	1	Total 43	C 34	Fe 1	N 4	O 4	0	0
2	B	1	Total 43	C 34	Fe 1	N 4	O 4	0	0

- Molecule 3 is 5,6,7,8-TETRAHYDROBIOPTERIN (three-letter code: H4B) (formula: $C_9H_{15}N_5O_3$).



Mol	Chain	Residues	Atoms				ZeroOcc	AltConf
			Total	C	N	O		
3	A	1	17	9	5	3	0	0
3	B	1	17	9	5	3	0	0

- Molecule 4 is N-(3-{2-[(3-{[(Z)-imino(thiophen-2-yl)methyl]amino}benzyl)amino]ethyl}phenyl)thiophene-2-carboximidamide (three-letter code: H45) (formula: C₂₅H₂₅N₅S₂).



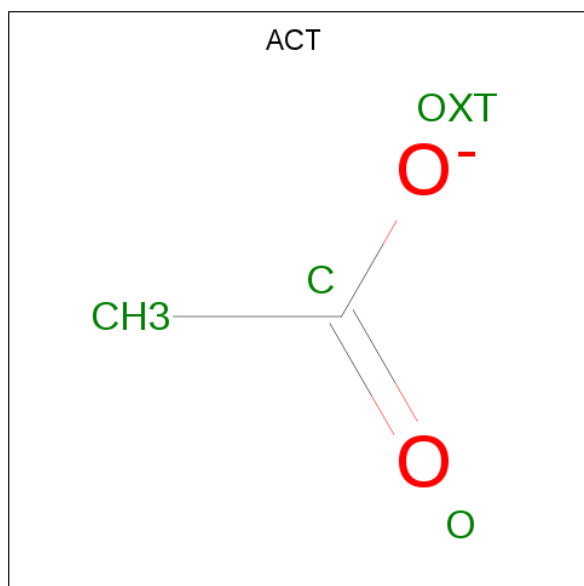
Mol	Chain	Residues	Atoms				ZeroOcc	AltConf
			Total	C	N	S		
4	A	1	32	25	5	2	0	0

Continued on next page...

Continued from previous page...

Mol	Chain	Residues	Atoms				ZeroOcc	AltConf
			Total	C	N	S		
4	B	1	32	25	5	2	0	0

- Molecule 5 is ACETATE ION (three-letter code: ACT) (formula: C₂H₃O₂).



Mol	Chain	Residues	Atoms			ZeroOcc	AltConf
			Total	C	O		
5	A	1	4	2	2	0	0
5	B	1	4	2	2	0	0

- Molecule 6 is ZINC ION (three-letter code: ZN) (formula: Zn).

Mol	Chain	Residues	Atoms		ZeroOcc	AltConf
			Total	Zn		
6	A	1	1	1	0	0

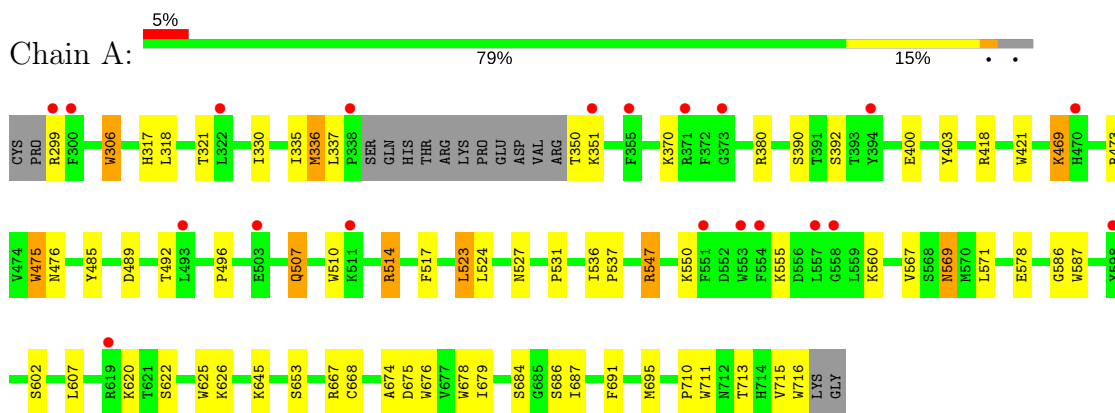
- Molecule 7 is water.

Mol	Chain	Residues	Atoms		ZeroOcc	AltConf
			Total	O		
7	A	53	53	53	0	0
7	B	98	98	98	0	0

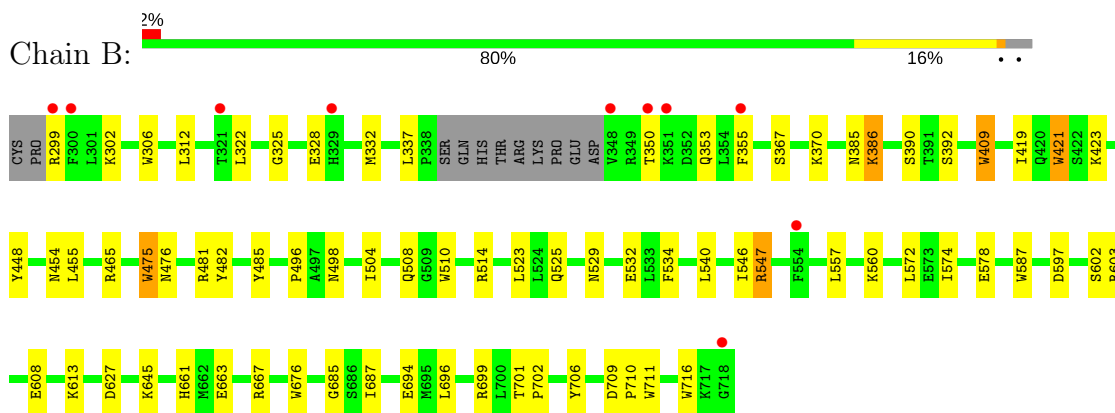
3 Residue-property plots [i](#)

These plots are drawn for all protein, RNA and DNA chains in the entry. The first graphic for a chain summarises the proportions of the various outlier classes displayed in the second graphic. The second graphic shows the sequence view annotated by issues in geometry and electron density. Residues are color-coded according to the number of geometric quality criteria for which they contain at least one outlier: green = 0, yellow = 1, orange = 2 and red = 3 or more. A red dot above a residue indicates a poor fit to the electron density ($RSRZ > 2$). Stretches of 2 or more consecutive residues without any outlier are shown as a green connector. Residues present in the sample, but not in the model, are shown in grey.

- Molecule 1: Nitric oxide synthase, brain



- Molecule 1: Nitric oxide synthase, brain



4 Data and refinement statistics

Property	Value	Source
Space group	P 21 21 21	Depositor
Cell constants a, b, c, α , β , γ	51.92Å 111.06Å 165.33Å 90.00° 90.00° 90.00°	Depositor
Resolution (Å)	92.19 – 2.10 49.37 – 2.10	Depositor EDS
% Data completeness (in resolution range)	91.7 (92.19-2.10) 91.8 (49.37-2.10)	Depositor EDS
R_{merge}	0.07	Depositor
R_{sym}	0.07	Depositor
$\langle I/\sigma(I) \rangle$ ¹	2.15 (at 2.10Å)	Xtrriage
Refinement program	REFMAC	Depositor
R, R_{free}	0.216 , 0.264 0.215 , 0.262	Depositor DCC
R_{free} test set	2556 reflections (4.92%)	wwPDB-VP
Wilson B-factor (Å ²)	35.2	Xtrriage
Anisotropy	0.567	Xtrriage
Bulk solvent k_{sol} (e/Å ³), B_{sol} (Å ²)	0.35 , 47.7	EDS
L-test for twinning ²	$\langle L \rangle = 0.49$, $\langle L^2 \rangle = 0.32$	Xtrriage
Estimated twinning fraction	No twinning to report.	Xtrriage
F_o, F_c correlation	0.95	EDS
Total number of atoms	7002	wwPDB-VP
Average B, all atoms (Å ²)	60.0	wwPDB-VP

Xtrriage's analysis on translational NCS is as follows: *The largest off-origin peak in the Patterson function is 3.08% of the height of the origin peak. No significant pseudotranslation is detected.*

¹Intensities estimated from amplitudes.

²Theoretical values of $\langle |L| \rangle$, $\langle L^2 \rangle$ for acentric reflections are 0.5, 0.333 respectively for untwinned datasets, and 0.375, 0.2 for perfectly twinned datasets.

5 Model quality [i](#)

5.1 Standard geometry [i](#)

Bond lengths and bond angles in the following residue types are not validated in this section: H45, ZN, H4B, HEM, ACT

The Z score for a bond length (or angle) is the number of standard deviations the observed value is removed from the expected value. A bond length (or angle) with $|Z| > 5$ is considered an outlier worth inspection. RMSZ is the root-mean-square of all Z scores of the bond lengths (or angles).

Mol	Chain	Bond lengths		Bond angles	
		RMSZ	# Z >5	RMSZ	# Z >5
1	A	0.72	9/3406 (0.3%)	0.72	3/4621 (0.1%)
1	B	0.80	8/3438 (0.2%)	0.79	0/4661
All	All	0.76	17/6844 (0.2%)	0.76	3/9282 (0.0%)

All (17) bond length outliers are listed below:

Mol	Chain	Res	Type	Atoms	Z	Observed(Å)	Ideal(Å)
1	A	676	TRP	CD2-CE2	6.53	1.49	1.41
1	B	716	TRP	CD2-CE2	5.95	1.48	1.41
1	A	587	TRP	CD2-CE2	5.92	1.48	1.41
1	A	421	TRP	CD2-CE2	5.71	1.48	1.41
1	B	676	TRP	CD2-CE2	5.62	1.48	1.41
1	B	711	TRP	CD2-CE2	5.43	1.47	1.41
1	B	409	TRP	CD2-CE2	5.38	1.47	1.41
1	A	510	TRP	CD2-CE2	5.29	1.47	1.41
1	B	475	TRP	CD2-CE2	5.28	1.47	1.41
1	B	510	TRP	CD2-CE2	5.19	1.47	1.41
1	A	711	TRP	CD2-CE2	5.17	1.47	1.41
1	A	716	TRP	CD2-CE2	5.17	1.47	1.41
1	A	306	TRP	CD2-CE2	5.15	1.47	1.41
1	B	421	TRP	CD2-CE2	5.14	1.47	1.41
1	B	306	TRP	CD2-CE2	5.12	1.47	1.41
1	A	475	TRP	CD2-CE2	5.12	1.47	1.41
1	A	625	TRP	CD2-CE2	5.03	1.47	1.41

All (3) bond angle outliers are listed below:

Mol	Chain	Res	Type	Atoms	Z	Observed(°)	Ideal(°)
1	A	514	ARG	NE-CZ-NH1	9.36	124.98	120.30
1	A	418	ARG	NE-CZ-NH1	-5.23	117.68	120.30

Continued on next page...

Continued from previous page...

Mol	Chain	Res	Type	Atoms	Z	Observed(°)	Ideal(°)
1	A	586	GLY	N-CA-C	-5.11	100.33	113.10

There are no chirality outliers.

There are no planarity outliers.

5.2 Too-close contacts

In the following table, the Non-H and H(model) columns list the number of non-hydrogen atoms and hydrogen atoms in the chain respectively. The H(added) column lists the number of hydrogen atoms added and optimized by MolProbity. The Clashes column lists the number of clashes within the asymmetric unit, whereas Symm-Clashes lists symmetry related clashes.

Mol	Chain	Non-H	H(model)	H(added)	Clashes	Symm-Clashes
1	A	3313	0	3221	40	0
1	B	3345	0	3259	33	0
2	A	43	0	30	2	0
2	B	43	0	30	5	0
3	A	17	0	15	0	0
3	B	17	0	15	0	0
4	A	32	0	23	3	0
4	B	32	0	24	2	0
5	A	4	0	3	0	0
5	B	4	0	3	0	0
6	A	1	0	0	0	0
7	A	53	0	0	1	0
7	B	98	0	0	1	0
All	All	7002	0	6623	75	0

The all-atom clashscore is defined as the number of clashes found per 1000 atoms (including hydrogen atoms). The all-atom clashscore for this structure is 6.

All (75) close contacts within the same asymmetric unit are listed below, sorted by their clash magnitude.

Atom-1	Atom-2	Interatomic distance (Å)	Clash overlap (Å)
1:A:336:MET:CE	1:A:678:TRP:HZ2	1.87	0.86
1:B:386:LYS:HE2	7:B:941:HOH:O	1.78	0.83
1:B:325:GLY:O	1:B:332:MET:HG3	1.81	0.80
1:A:523:LEU:HD22	1:A:531:PRO:HB2	1.63	0.80
1:A:336:MET:CE	1:A:678:TRP:CZ2	2.68	0.76
2:A:801:HEM:HMC2	2:A:801:HEM:HBC2	1.73	0.70

Continued on next page...

Continued from previous page...

Atom-1	Atom-2	Interatomic distance (Å)	Clash overlap (Å)
1:A:351:LYS:HE3	1:A:392:SER:HB3	1.79	0.65
1:A:469:LYS:HA	1:A:469:LYS:HE3	1.81	0.62
1:A:336:MET:HE1	1:A:678:TRP:HZ2	1.67	0.59
1:A:674:ALA:HB3	1:A:695:MET:HB3	1.84	0.59
1:A:336:MET:HE1	1:A:678:TRP:CZ2	2.37	0.59
1:A:607:LEU:HD13	1:A:626:LYS:HG2	1.86	0.57
2:B:801:HEM:HBC2	2:B:801:HEM:CMC	2.34	0.57
1:B:663:GLU:HB3	1:B:667:ARG:NH1	2.20	0.57
1:A:380:ARG:HD3	1:A:400:GLU:OE1	2.05	0.56
1:B:475:TRP:HB2	1:B:523:LEU:HB3	1.87	0.56
1:A:675:ASP:O	1:A:679:ILE:HG12	2.06	0.56
1:B:547:ARG:H	1:B:547:ARG:HD3	1.72	0.55
1:A:336:MET:HE2	1:A:678:TRP:HZ2	1.72	0.54
1:A:626:LYS:HB3	1:B:687:ILE:HD12	1.90	0.53
1:A:330:ILE:HD11	1:B:696:LEU:HB3	1.90	0.53
1:A:299:ARG:HG3	1:A:318:LEU:HD21	1.91	0.52
1:B:485:TYR:CZ	1:B:514:ARG:HA	2.45	0.51
1:B:587:TRP:H	2:B:801:HEM:HAB	1.75	0.51
1:A:524:LEU:O	1:A:531:PRO:HA	2.11	0.51
1:B:455:LEU:HD23	1:B:587:TRP:HB3	1.93	0.50
1:B:504:ILE:O	1:B:508:GLN:HG2	2.11	0.50
1:B:496:PRO:HB2	1:B:602:SER:O	2.13	0.49
1:B:701:THR:HA	1:B:702:PRO:C	2.32	0.49
1:B:706:TYR:OH	2:B:801:HEM:O1D	2.27	0.48
1:A:475:TRP:HB2	1:A:523:LEU:HB3	1.94	0.48
1:A:686:SER:HA	1:A:691:PHE:CG	2.49	0.47
1:B:597:ASP:OD1	1:B:603:ARG:NH1	2.38	0.47
1:B:525:GLN:HG3	1:B:529:ASN:O	2.13	0.47
1:B:572:LEU:HD21	1:B:574:ILE:HD11	1.96	0.47
1:B:299:ARG:HB3	1:B:299:ARG:CZ	2.44	0.47
2:A:801:HEM:CMC	2:A:801:HEM:HBC2	2.44	0.47
1:B:482:TYR:O	1:B:498:ASN:ND2	2.40	0.46
1:A:335:ILE:HA	1:B:694:GLU:HG2	1.97	0.46
1:B:302:LYS:HA	1:B:312:LEU:O	2.14	0.46
1:B:409:TRP:CE3	1:B:421:TRP:HA	2.50	0.46
1:B:448:TYR:C	1:B:448:TYR:CD2	2.88	0.46
1:A:473:ARG:NH2	1:A:710:PRO:HD3	2.31	0.46
2:B:801:HEM:HBC2	2:B:801:HEM:HMC1	1.97	0.46
1:B:367:SER:O	1:B:370:LYS:HE3	2.15	0.46
1:A:547:ARG:HD3	1:A:547:ARG:H	1.82	0.45
1:B:547:ARG:HD3	1:B:547:ARG:N	2.31	0.45

Continued on next page...

Continued from previous page...

Atom-1	Atom-2	Interatomic distance (Å)	Clash overlap (Å)
1:A:492:THR:HG21	1:A:496:PRO:HA	1.98	0.45
1:A:306:TRP:HB3	4:B:803:H45:S21	2.58	0.44
1:A:667:ARG:NH1	1:A:668:CYS:SG	2.91	0.44
1:A:602:SER:OG	4:A:803:H45:H3	2.18	0.43
1:A:569:ASN:H	1:A:569:ASN:HD22	1.66	0.43
1:A:567:VAL:HG21	4:A:803:H45:C14	2.48	0.43
1:B:465:ARG:NH1	1:B:578:GLU:OE1	2.51	0.43
2:B:801:HEM:C4B	4:B:803:H45:S01	3.12	0.42
1:B:546:ILE:HG12	1:B:560:LYS:HA	2.00	0.42
1:A:684:SER:HB3	1:A:687:ILE:HG12	2.00	0.42
1:A:321:THR:HG22	7:A:906:HOH:O	2.18	0.42
1:B:419:ILE:HD12	1:B:661:HIS:HB2	2.02	0.42
1:A:485:TYR:CZ	1:A:514:ARG:HA	2.55	0.42
1:B:557:LEU:HD21	1:B:613:LYS:HZ3	1.83	0.42
1:B:322:LEU:HB3	1:B:699:ARG:HH21	1.83	0.42
1:A:567:VAL:HG23	4:A:803:H45:H26	2.01	0.41
1:A:469:LYS:NZ	1:A:715:VAL:HG22	2.35	0.41
1:A:507:GLN:HB3	1:A:507:GLN:HE21	1.67	0.41
1:A:299:ARG:O	1:A:317:HIS:HE1	2.04	0.41
1:A:536:ILE:O	1:A:537:PRO:C	2.58	0.41
1:B:355:PHE:CE1	1:B:385:ASN:HA	2.56	0.40
1:B:532:GLU:HB2	1:B:534:PHE:CE1	2.56	0.40
1:A:403:TYR:CD2	1:A:403:TYR:C	2.95	0.40
1:A:517:PHE:HB2	1:A:560:LYS:HE3	2.04	0.40
1:A:571:LEU:HD21	1:A:578:GLU:HB3	2.02	0.40
1:A:299:ARG:O	1:A:317:HIS:CE1	2.75	0.40
1:A:550:LYS:HB2	1:A:550:LYS:HE3	1.69	0.40
1:B:709:ASP:HA	1:B:710:PRO:HD3	1.99	0.40

There are no symmetry-related clashes.

5.3 Torsion angles [\(i\)](#)

5.3.1 Protein backbone [\(i\)](#)

In the following table, the Percentiles column shows the percent Ramachandran outliers of the chain as a percentile score with respect to all X-ray entries followed by that with respect to entries of similar resolution.

The Analysed column shows the number of residues for which the backbone conformation was analysed, and the total number of residues.

Mol	Chain	Analysed	Favoured	Allowed	Outliers	Percentiles	
1	A	403/422 (96%)	389 (96%)	14 (4%)	0	100	100
1	B	407/422 (96%)	393 (97%)	13 (3%)	1 (0%)	49	51
All	All	810/844 (96%)	782 (96%)	27 (3%)	1 (0%)	53	55

All (1) Ramachandran outliers are listed below:

Mol	Chain	Res	Type
1	B	685	GLY

5.3.2 Protein sidechains [i](#)

In the following table, the Percentiles column shows the percent sidechain outliers of the chain as a percentile score with respect to all X-ray entries followed by that with respect to entries of similar resolution.

The Analysed column shows the number of residues for which the sidechain conformation was analysed, and the total number of residues.

Mol	Chain	Analysed	Rotameric	Outliers	Percentiles	
1	A	363/377 (96%)	344 (95%)	19 (5%)	25	23
1	B	366/377 (97%)	350 (96%)	16 (4%)	31	30
All	All	729/754 (97%)	694 (95%)	35 (5%)	28	26

All (35) residues with a non-rotameric sidechain are listed below:

Mol	Chain	Res	Type
1	A	336	MET
1	A	337	LEU
1	A	350	THR
1	A	370	LYS
1	A	390	SER
1	A	469	LYS
1	A	476	ASN
1	A	489	ASP
1	A	507	GLN
1	A	523	LEU
1	A	527	ASN
1	A	547	ARG
1	A	555	LYS
1	A	569	ASN
1	A	620	LYS

Continued on next page...

Continued from previous page...

Mol	Chain	Res	Type
1	A	622	SER
1	A	645	LYS
1	A	653	SER
1	A	713	THR
1	B	328	GLU
1	B	337	LEU
1	B	350	THR
1	B	353	GLN
1	B	386	LYS
1	B	390	SER
1	B	392	SER
1	B	423	LYS
1	B	454	ASN
1	B	476	ASN
1	B	481	ARG
1	B	540	LEU
1	B	547	ARG
1	B	608	GLU
1	B	627	ASP
1	B	645	LYS

Some sidechains can be flipped to improve hydrogen bonding and reduce clashes. All (16) such sidechains are listed below:

Mol	Chain	Res	Type
1	A	317	HIS
1	A	353	GLN
1	A	425	GLN
1	A	454	ASN
1	A	507	GLN
1	A	508	GLN
1	A	527	ASN
1	A	569	ASN
1	A	605	ASN
1	A	697	ASN
1	A	712	ASN
1	B	364	GLN
1	B	454	ASN
1	B	601	ASN
1	B	605	ASN
1	B	697	ASN

5.3.3 RNA [i](#)

There are no RNA molecules in this entry.

5.4 Non-standard residues in protein, DNA, RNA chains [i](#)

There are no non-standard protein/DNA/RNA residues in this entry.

5.5 Carbohydrates [i](#)

There are no carbohydrates in this entry.

5.6 Ligand geometry [i](#)

Of 9 ligands modelled in this entry, 1 is monoatomic - leaving 8 for Mogul analysis.

In the following table, the Counts columns list the number of bonds (or angles) for which Mogul statistics could be retrieved, the number of bonds (or angles) that are observed in the model and the number of bonds (or angles) that are defined in the Chemical Component Dictionary. The Link column lists molecule types, if any, to which the group is linked. The Z score for a bond length (or angle) is the number of standard deviations the observed value is removed from the expected value. A bond length (or angle) with $|Z| > 2$ is considered an outlier worth inspection. RMSZ is the root-mean-square of all Z scores of the bond lengths (or angles).

Mol	Type	Chain	Res	Link	Bond lengths			Bond angles		
					Counts	RMSZ	# Z > 2	Counts	RMSZ	# Z > 2
2	HEM	A	801	1	27,50,50	2.26	10 (37%)	17,82,82	3.43	9 (52%)
3	H4B	A	802	-	15,18,18	0.96	1 (6%)	11,26,26	2.52	5 (45%)
4	H45	A	803	-	35,35,35	1.27	3 (8%)	31,46,46	2.09	3 (9%)
5	ACT	A	804	-	1,3,3	0.94	0	0,3,3	0.00	-
2	HEM	B	801	1	27,50,50	2.25	11 (40%)	17,82,82	3.37	7 (41%)
3	H4B	B	802	-	15,18,18	1.27	3 (20%)	11,26,26	2.61	5 (45%)
4	H45	B	803	-	35,35,35	1.26	5 (14%)	31,46,46	1.79	4 (12%)
5	ACT	B	804	-	1,3,3	0.94	0	0,3,3	0.00	-

In the following table, the Chirals column lists the number of chiral outliers, the number of chiral centers analysed, the number of these observed in the model and the number defined in the Chemical Component Dictionary. Similar counts are reported in the Torsion and Rings columns. '-' means no outliers of that kind were identified.

Mol	Type	Chain	Res	Link	Chirals	Torsions	Rings
2	HEM	A	801	1	-	0/6/54/54	0/0/8/8

Continued on next page...

Continued from previous page...

Mol	Type	Chain	Res	Link	Chirals	Torsions	Rings
3	H4B	A	802	-	-	0/8/17/17	0/2/2/2
4	H45	A	803	-	-	0/15/23/23	0/4/4/4
5	ACT	A	804	-	-	0/0/0/0	0/0/0/0
2	HEM	B	801	1	-	0/6/54/54	0/0/8/8
3	H4B	B	802	-	-	0/8/17/17	0/2/2/2
4	H45	B	803	-	-	0/15/23/23	0/4/4/4
5	ACT	B	804	-	-	0/0/0/0	0/0/0/0

All (33) bond length outliers are listed below:

Mol	Chain	Res	Type	Atoms	Z	Observed(Å)	Ideal(Å)
4	B	803	H45	C06-N07	-3.22	1.32	1.39
4	B	803	H45	C31-N27	-2.77	1.36	1.41
4	A	803	H45	C06-N07	-2.28	1.34	1.39
4	B	803	H45	C26-N27	-2.06	1.34	1.39
3	A	802	H4B	C4-N3	2.00	1.36	1.33
3	B	802	H4B	C8A-N1	2.07	1.38	1.34
4	B	803	H45	C05-S01	2.07	1.74	1.72
2	B	801	HEM	C1C-C2C	2.11	1.47	1.42
2	A	801	HEM	C1D-CHD	2.13	1.45	1.40
3	B	802	H4B	C7-C6	2.20	1.54	1.52
4	B	803	H45	C25-C26	2.24	1.48	1.46
3	B	802	H4B	C4-N3	2.36	1.37	1.33
2	B	801	HEM	C1A-CHA	2.39	1.46	1.40
2	B	801	HEM	C1B-C2B	2.54	1.48	1.42
2	B	801	HEM	C4B-CHC	2.58	1.47	1.40
2	A	801	HEM	C1C-C2C	2.62	1.48	1.42
4	A	803	H45	C05-C06	2.76	1.49	1.46
2	A	801	HEM	C4B-CHC	2.85	1.47	1.40
2	A	801	HEM	C1B-C2B	2.87	1.49	1.42
2	A	801	HEM	C3B-C2B	2.89	1.44	1.40
2	B	801	HEM	C4D-C3D	2.90	1.49	1.42
2	A	801	HEM	C3D-C2D	2.97	1.46	1.37
2	A	801	HEM	C2A-C3A	3.05	1.46	1.37
2	B	801	HEM	C1A-NA	3.28	1.42	1.36
2	B	801	HEM	C3B-C2B	3.34	1.45	1.40
2	B	801	HEM	C3D-C2D	3.35	1.47	1.37
4	A	803	H45	C25-C26	3.53	1.50	1.46
2	A	801	HEM	C1A-NA	3.73	1.43	1.36
2	B	801	HEM	C2A-C3A	3.94	1.49	1.37
2	A	801	HEM	C4A-NA	4.23	1.44	1.36
2	B	801	HEM	C4A-NA	4.53	1.45	1.36

Continued on next page...

Continued from previous page...

Mol	Chain	Res	Type	Atoms	Z	Observed(Å)	Ideal(Å)
2	B	801	HEM	C3C-C2C	5.27	1.47	1.40
2	A	801	HEM	C3C-C2C	6.39	1.49	1.40

All (33) bond angle outliers are listed below:

Mol	Chain	Res	Type	Atoms	Z	Observed(°)	Ideal(°)
2	A	801	HEM	C1D-C2D-C3D	-9.45	100.42	107.00
2	B	801	HEM	C1D-C2D-C3D	-9.40	100.45	107.00
4	A	803	H45	C03-C02-S01	-7.72	104.87	113.18
4	A	803	H45	C23-C22-S21	-6.86	105.79	113.18
4	B	803	H45	C03-C02-S01	-6.02	106.69	113.18
4	B	803	H45	C23-C22-S21	-5.16	107.62	113.18
2	B	801	HEM	CBA-CAA-C2A	-4.54	103.80	112.48
2	A	801	HEM	CBA-CAA-C2A	-4.45	103.97	112.48
3	A	802	H4B	N3-C2-N1	-4.11	118.90	125.43
2	B	801	HEM	C4A-C3A-C2A	-3.96	104.24	107.00
2	A	801	HEM	CAD-CBD-CGD	-3.93	105.95	112.66
3	B	802	H4B	N3-C2-N1	-3.88	119.26	125.43
4	B	803	H45	C15-C17-N18	-3.51	103.91	112.90
2	A	801	HEM	C4A-C3A-C2A	-3.48	104.58	107.00
4	B	803	H45	C38-C37-C35	-2.03	108.52	112.85
2	B	801	HEM	CMA-C3A-C2A	2.34	129.35	124.94
2	A	801	HEM	C4C-C3C-C2C	2.44	108.60	106.90
2	A	801	HEM	CMB-C2B-C3B	2.51	129.45	124.88
2	A	801	HEM	CMD-C2D-C1D	2.62	132.50	128.46
3	A	802	H4B	N2-C2-N3	2.67	121.44	117.25
4	A	803	H45	C17-N18-C38	2.77	123.14	113.39
3	B	802	H4B	N2-C2-N1	2.81	121.66	117.25
2	B	801	HEM	CMD-C2D-C3D	3.00	130.61	124.94
3	A	802	H4B	C4-N3-C2	3.02	120.40	116.06
3	B	802	H4B	C2-N1-C8A	3.09	121.44	114.50
3	B	802	H4B	C4-N3-C2	3.53	121.14	116.06
3	A	802	H4B	C4-C4A-C8A	3.68	117.89	114.56
2	A	801	HEM	CMC-C2C-C3C	3.85	131.89	124.88
3	A	802	H4B	C2-N1-C8A	3.92	123.31	114.50
2	B	801	HEM	C3B-C4B-NB	4.50	115.02	109.21
2	B	801	HEM	CMB-C2B-C3B	4.69	133.42	124.88
3	B	802	H4B	C4-C4A-C8A	4.70	118.82	114.56
2	A	801	HEM	C3B-C4B-NB	4.86	115.50	109.21

There are no chirality outliers.

There are no torsion outliers.

There are no ring outliers.

4 monomers are involved in 11 short contacts:

Mol	Chain	Res	Type	Clashes	Symm-Clashes
2	A	801	HEM	2	0
4	A	803	H45	3	0
2	B	801	HEM	5	0
4	B	803	H45	2	0

5.7 Other polymers [i](#)

There are no such residues in this entry.

5.8 Polymer linkage issues [i](#)

There are no chain breaks in this entry.

6 Fit of model and data

6.1 Protein, DNA and RNA chains

In the following table, the column labelled ‘#RSRZ > 2’ contains the number (and percentage) of RSRZ outliers, followed by percent RSRZ outliers for the chain as percentile scores relative to all X-ray entries and entries of similar resolution. The OWAB column contains the minimum, median, 95th percentile and maximum values of the occupancy-weighted average B-factor per residue. The column labelled ‘Q < 0.9’ lists the number of (and percentage) of residues with an average occupancy less than 0.9.

Mol	Chain	Analysed	<RSRZ>	#RSRZ>2	OWAB(Å ²)	Q<0.9
1	A	407/422 (96%)	0.48	20 (4%) 29 36	34, 63, 107, 145	0
1	B	411/422 (97%)	0.28	10 (2%) 59 64	32, 51, 82, 103	0
All	All	818/844 (96%)	0.38	30 (3%) 41 48	32, 56, 98, 145	0

All (30) RSRZ outliers are listed below:

Mol	Chain	Res	Type	RSRZ
1	B	348	VAL	6.4
1	A	355	PHE	6.2
1	B	300	PHE	5.6
1	A	322	LEU	5.4
1	A	338	PRO	3.7
1	A	299	ARG	3.6
1	A	373	GLY	3.4
1	A	551	PHE	3.3
1	B	355	PHE	3.0
1	B	718	GLY	2.9
1	B	351	LYS	2.9
1	A	351	LYS	2.8
1	A	557	LEU	2.7
1	A	554	PHE	2.5
1	B	350	THR	2.5
1	A	470	HIS	2.4
1	A	558	GLY	2.4
1	B	554	PHE	2.3
1	A	371	ARG	2.3
1	A	511	LYS	2.3
1	B	299	ARG	2.3
1	A	300	PHE	2.2
1	A	394	TYR	2.2
1	A	503	GLU	2.2

Continued on next page...

Continued from previous page...

Mol	Chain	Res	Type	RSRZ
1	A	598	TYR	2.1
1	B	329	HIS	2.1
1	B	321	THR	2.1
1	A	619	ARG	2.1
1	A	553	TRP	2.1
1	A	493	LEU	2.0

6.2 Non-standard residues in protein, DNA, RNA chains [i](#)

There are no non-standard protein/DNA/RNA residues in this entry.

6.3 Carbohydrates [i](#)

There are no carbohydrates in this entry.

6.4 Ligands [i](#)

In the following table, the Atoms column lists the number of modelled atoms in the group and the number defined in the chemical component dictionary. The B-factors column lists the minimum, median, 95th percentile and maximum values of B factors of atoms in the group. The column labelled 'Q<0.9' lists the number of atoms with occupancy less than 0.9.

Mol	Type	Chain	Res	Atoms	RSCC	RSR	B-factors(Å ²)	Q<0.9
5	ACT	B	804	4/4	0.92	0.15	65,68,69,74	0
5	ACT	A	804	4/4	0.93	0.30	72,73,75,76	0
4	H45	A	803	32/32	0.94	0.15	39,52,91,93	0
4	H45	B	803	32/32	0.96	0.15	34,50,97,101	0
3	H4B	A	802	17/17	0.97	0.12	37,40,46,46	0
3	H4B	B	802	17/17	0.97	0.12	37,39,48,48	0
2	HEM	A	801	43/43	0.98	0.14	38,42,47,54	0
2	HEM	B	801	43/43	0.98	0.16	32,35,45,47	0
6	ZN	A	805	1/1	1.00	0.14	50,50,50,50	0

6.5 Other polymers [i](#)

There are no such residues in this entry.