



# Full wwPDB X-ray Structure Validation Report ⓘ

Feb 19, 2024 – 06:42 PM EST

PDB ID : 4KFB  
Title : HIV-1 reverse transcriptase with bound fragment at NNRTI adjacent site  
Authors : Bauman, J.D.; Patel, D.; Arnold, E.  
Deposited on : 2013-04-26  
Resolution : 1.85 Å(reported)

This is a Full wwPDB X-ray Structure Validation Report for a publicly released PDB entry.

We welcome your comments at [validation@mail.wwpdb.org](mailto:validation@mail.wwpdb.org)

A user guide is available at

<https://www.wwpdb.org/validation/2017/XrayValidationReportHelp>

with specific help available everywhere you see the ⓘ symbol.

The types of validation reports are described at

<http://www.wwpdb.org/validation/2017/FAQs#types>.

---

The following versions of software and data (see [references ⓘ](#)) were used in the production of this report:

MolProbity : 4.02b-467  
Mogul : 1.8.5 (274361), CSD as541be (2020)  
Xtriage (Phenix) : 1.13  
EDS : 2.36  
buster-report : 1.1.7 (2018)  
Percentile statistics : 20191225.v01 (using entries in the PDB archive December 25th 2019)  
Refmac : 5.8.0158  
CCP4 : 7.0.044 (Gargrove)  
Ideal geometry (proteins) : Engh & Huber (2001)  
Ideal geometry (DNA, RNA) : Parkinson et al. (1996)  
Validation Pipeline (wwPDB-VP) : 2.36

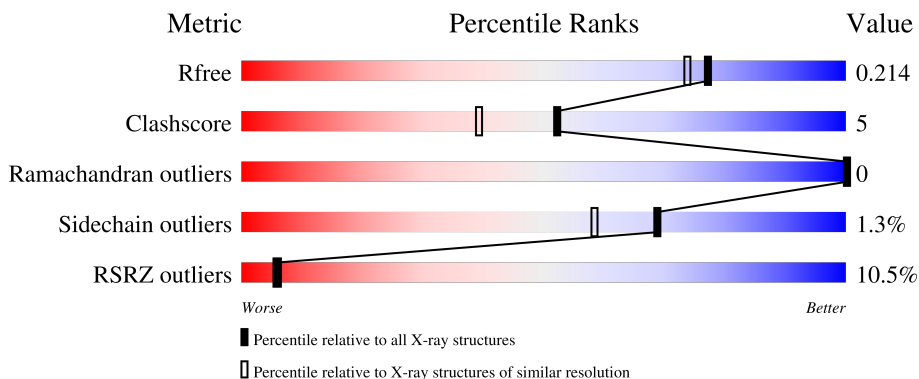
# 1 Overall quality at a glance

The following experimental techniques were used to determine the structure:

*X-RAY DIFFRACTION*

The reported resolution of this entry is 1.85 Å.

Percentile scores (ranging between 0-100) for global validation metrics of the entry are shown in the following graphic. The table shows the number of entries on which the scores are based.



Metric	Whole archive (#Entries)	Similar resolution (#Entries, resolution range(Å))
$R_{free}$	130704	2469 (1.86-1.86)
Clashscore	141614	2625 (1.86-1.86)
Ramachandran outliers	138981	2592 (1.86-1.86)
Sidechain outliers	138945	2592 (1.86-1.86)
RSRZ outliers	127900	2436 (1.86-1.86)

The table below summarises the geometric issues observed across the polymeric chains and their fit to the electron density. The red, orange, yellow and green segments of the lower bar indicate the fraction of residues that contain outliers for  $\geq 3$ , 2, 1 and 0 types of geometric quality criteria respectively. A grey segment represents the fraction of residues that are not modelled. The numeric value for each fraction is indicated below the corresponding segment, with a dot representing fractions  $\leq 5\%$ . The upper red bar (where present) indicates the fraction of residues that have poor fit to the electron density. The numeric value is given above the bar.

Mol	Chain	Length	Quality of chain
1	A	557	<p>9% 88% 12%</p>
2	B	429	<p>12% 86% 10%</p>

## 2 Entry composition

There are 6 unique types of molecules in this entry. The entry contains 8685 atoms, of which 0 are hydrogens and 0 are deuteriums.

In the tables below, the ZeroOcc column contains the number of atoms modelled with zero occupancy, the AltConf column contains the number of residues with at least one atom in alternate conformation and the Trace column contains the number of residues modelled with at most 2 atoms.

- Molecule 1 is a protein called REVERSE TRANSCRIPTASE/RIBONUCLEASE H, EXORIBONUCLEA P66 RT.

Mol	Chain	Residues	Atoms					ZeroOcc	AltConf	Trace
			Total	C	N	O	S			
1	A	556	4525	2928	752	837	8	0	1	0

There are 5 discrepancies between the modelled and reference sequences:

Chain	Residue	Modelled	Actual	Comment	Reference
A	-1	MET	-	expression tag	UNP P03366
A	0	VAL	-	expression tag	UNP P03366
A	172	ALA	LYS	engineered mutation	UNP P03366
A	173	ALA	LYS	engineered mutation	UNP P03366
A	280	SER	CYS	engineered mutation	UNP P03366

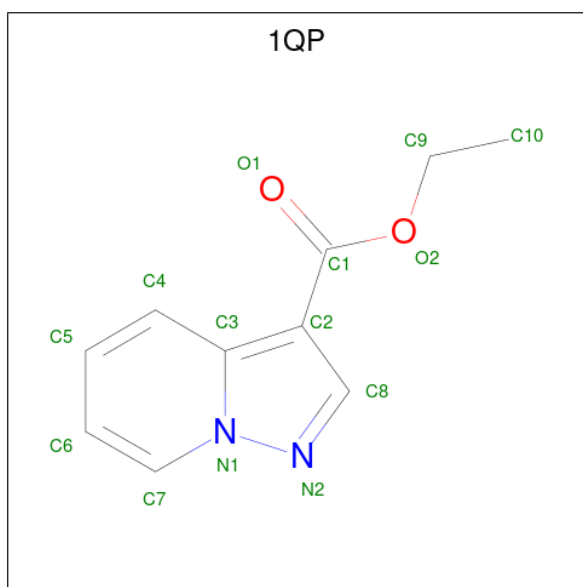
- Molecule 2 is a protein called P51 RT.

Mol	Chain	Residues	Atoms					ZeroOcc	AltConf	Trace
			Total	C	N	O	S			
2	B	412	3419	2228	565	619	7	0	1	0

There are 6 discrepancies between the modelled and reference sequences:

Chain	Residue	Modelled	Actual	Comment	Reference
B	0	GLY	-	expression tag	UNP P03366
B	1	PRO	-	expression tag	UNP P03366
B	2	ILE	-	expression tag	UNP P03366
B	3	SER	-	expression tag	UNP P03366
B	4	PRO	-	expression tag	UNP P03366
B	268	SER	CYS	engineered mutation	UNP P03366

- Molecule 3 is ethyl pyrazolo[1,5-a]pyridine-3-carboxylate (three-letter code: 1QP) (formula: C<sub>10</sub>H<sub>10</sub>N<sub>2</sub>O<sub>2</sub>).



Mol	Chain	Residues	Atoms				ZeroOcc	AltConf
			Total	C	N	O		
3	A	1	14	10	2	2	0	0

- Molecule 4 is DIMETHYL SULFOXIDE (three-letter code: DMS) (formula: C<sub>2</sub>H<sub>6</sub>OS).



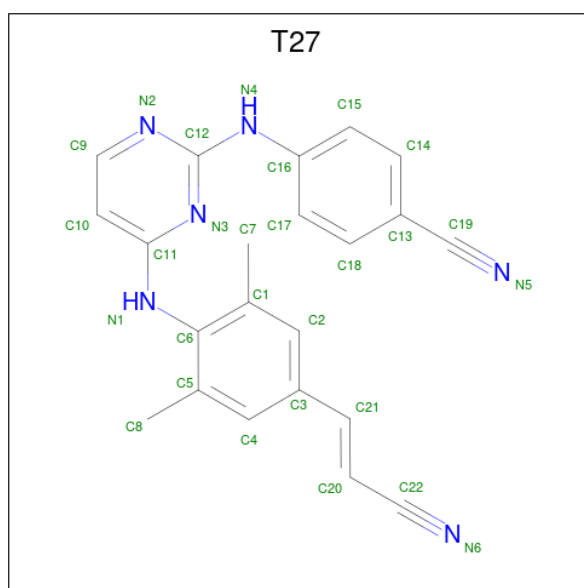
Mol	Chain	Residues	Atoms				ZeroOcc	AltConf
			Total	C	O	S		
4	A	1	4	2	1	1	0	0
4	A	1	4	2	1	1	0	0
4	A	1	4	2	1	1	0	0

*Continued on next page...*

Continued from previous page...

Mol	Chain	Residues	Atoms				ZeroOcc	AltConf
4	A	1	Total	C	O	S	0	0
			4	2	1	1		
4	A	1	Total	C	O	S	0	0
			4	2	1	1		
4	B	1	Total	C	O	S	0	0
			4	2	1	1		
4	B	1	Total	C	O	S	0	0
			4	2	1	1		
4	B	1	Total	C	O	S	0	0
			4	2	1	1		
4	B	1	Total	C	O	S	0	0
			4	2	1	1		

- Molecule 5 is 4-{[4-({4-[(E)-2-cyanoethyl]-2,6-dimethylphenyl}amino)pyrimidin-2-yl]amino}benzotrile (three-letter code: T27) (formula: C<sub>22</sub>H<sub>18</sub>N<sub>6</sub>).



Mol	Chain	Residues	Atoms			ZeroOcc	AltConf
5	A	1	Total	C	N	0	0
			28	22	6		

- Molecule 6 is water.

Mol	Chain	Residues	Atoms		ZeroOcc	AltConf
6	A	401	Total	O	0	0
			401	401		

Continued on next page...

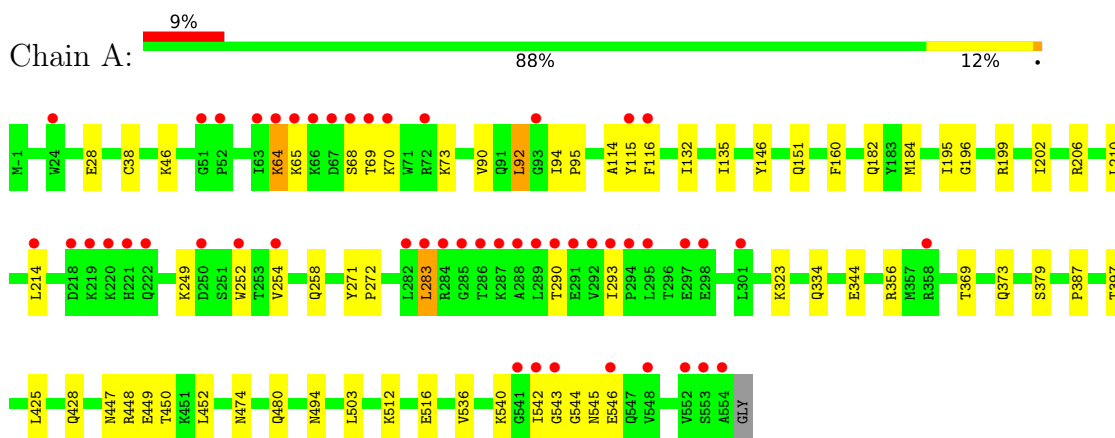
*Continued from previous page...*

<b>Mol</b>	<b>Chain</b>	<b>Residues</b>	<b>Atoms</b>		<b>ZeroOcc</b>	<b>AltConf</b>
6	B	258	Total 258	O 258	0	0

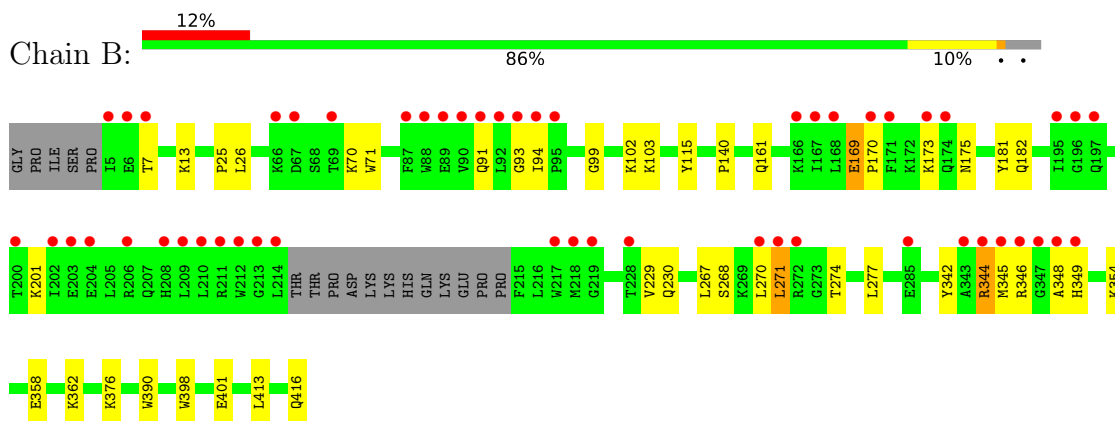
### 3 Residue-property plots

These plots are drawn for all protein, RNA, DNA and oligosaccharide chains in the entry. The first graphic for a chain summarises the proportions of the various outlier classes displayed in the second graphic. The second graphic shows the sequence view annotated by issues in geometry and electron density. Residues are color-coded according to the number of geometric quality criteria for which they contain at least one outlier: green = 0, yellow = 1, orange = 2 and red = 3 or more. A red dot above a residue indicates a poor fit to the electron density ( $RSRZ > 2$ ). Stretches of 2 or more consecutive residues without any outlier are shown as a green connector. Residues present in the sample, but not in the model, are shown in grey.

- Molecule 1: REVERSE TRANSCRIPTASE/RIBONUCLEASE H, EXORIBONUCLEA P66 RT



- Molecule 2: P51 RT



## 4 Data and refinement statistics

Property	Value	Source
Space group	C 1 2 1	Depositor
Cell constants a, b, c, $\alpha$ , $\beta$ , $\gamma$	161.41Å 73.14Å 108.77Å 90.00° 100.47° 90.00°	Depositor
Resolution (Å)	43.30 – 1.85 43.30 – 1.85	Depositor EDS
% Data completeness (in resolution range)	97.0 (43.30-1.85) 92.3 (43.30-1.85)	Depositor EDS
$R_{merge}$	0.07	Depositor
$R_{sym}$	(Not available)	Depositor
$\langle I/\sigma(I) \rangle$ <sup>1</sup>	2.30 (at 1.86Å)	Xtrriage
Refinement program	PHENIX (phenix.refine: 1.8.2_1309)	Depositor
R, $R_{free}$	0.186 , 0.214 0.186 , 0.214	Depositor DCC
$R_{free}$ test set	2054 reflections (2.00%)	wwPDB-VP
Wilson B-factor (Å <sup>2</sup> )	27.6	Xtrriage
Anisotropy	0.133	Xtrriage
Bulk solvent $k_{sol}$ (e/Å <sup>3</sup> ), $B_{sol}$ (Å <sup>2</sup> )	0.33 , 53.1	EDS
L-test for twinning <sup>2</sup>	$\langle  L  \rangle = 0.49$ , $\langle L^2 \rangle = 0.32$	Xtrriage
Estimated twinning fraction	No twinning to report.	Xtrriage
$F_o, F_c$ correlation	0.96	EDS
Total number of atoms	8685	wwPDB-VP
Average B, all atoms (Å <sup>2</sup> )	45.0	wwPDB-VP

Xtrriage's analysis on translational NCS is as follows: *The largest off-origin peak in the Patterson function is 4.74% of the height of the origin peak. No significant pseudotranslation is detected.*

<sup>1</sup>Intensities estimated from amplitudes.

<sup>2</sup>Theoretical values of  $\langle |L| \rangle$ ,  $\langle L^2 \rangle$  for acentric reflections are 0.5, 0.333 respectively for untwinned datasets, and 0.375, 0.2 for perfectly twinned datasets.



## 5 Model quality [i](#)

### 5.1 Standard geometry [i](#)

Bond lengths and bond angles in the following residue types are not validated in this section: T27, 1QP, DMS

The Z score for a bond length (or angle) is the number of standard deviations the observed value is removed from the expected value. A bond length (or angle) with  $|Z| > 5$  is considered an outlier worth inspection. RMSZ is the root-mean-square of all Z scores of the bond lengths (or angles).

Mol	Chain	Bond lengths		Bond angles	
		RMSZ	# Z  >5	RMSZ	# Z  >5
1	A	0.38	0/4643	0.56	1/6311 (0.0%)
2	B	0.37	0/3517	0.57	0/4776
All	All	0.38	0/8160	0.57	1/11087 (0.0%)

There are no bond length outliers.

All (1) bond angle outliers are listed below:

Mol	Chain	Res	Type	Atoms	Z	Observed(°)	Ideal(°)
1	A	92	LEU	N-CA-C	-5.34	96.58	111.00

There are no chirality outliers.

There are no planarity outliers.

### 5.2 Too-close contacts [i](#)

In the following table, the Non-H and H(model) columns list the number of non-hydrogen atoms and hydrogen atoms in the chain respectively. The H(added) column lists the number of hydrogen atoms added and optimized by MolProbity. The Clashes column lists the number of clashes within the asymmetric unit, whereas Symm-Clashes lists symmetry-related clashes.

Mol	Chain	Non-H	H(model)	H(added)	Clashes	Symm-Clashes
1	A	4525	0	4579	51	0
2	B	3419	0	3447	46	0
3	A	14	0	10	0	0
4	A	20	0	30	4	0
4	B	20	0	30	6	0
5	A	28	0	18	1	0
6	A	401	0	0	2	1
6	B	258	0	0	3	1

*Continued on next page...*

*Continued from previous page...*

Mol	Chain	Non-H	H(model)	H(added)	Clashes	Symm-Clashes
All	All	8685	0	8114	88	1

The all-atom clashscore is defined as the number of clashes found per 1000 atoms (including hydrogen atoms). The all-atom clashscore for this structure is 5.

All (88) close contacts within the same asymmetric unit are listed below, sorted by their clash magnitude.

Atom-1	Atom-2	Interatomic distance (Å)	Clash overlap (Å)
1:A:428:GLN:H	4:A:602:DMS:H22	1.41	0.84
1:A:543:GLY:H	2:B:271:LEU:HD13	1.45	0.81
2:B:91:GLN:HG2	2:B:93:GLY:H	1.51	0.76
2:B:344:ARG:HD2	2:B:346:ARG:HG2	1.68	0.76
2:B:25:PRO:HA	4:B:504:DMS:H11	1.73	0.69
1:A:543:GLY:N	2:B:271:LEU:HD13	2.08	0.68
2:B:175:ASN:OD1	2:B:201:LYS:NZ	2.26	0.68
1:A:544:GLY:HA2	2:B:274:THR:HG22	1.77	0.66
2:B:390:TRP:HE1	4:B:505:DMS:C1	2.09	0.65
2:B:91:GLN:OE1	2:B:161:GLN:NE2	2.29	0.65
1:A:450:THR:HG23	1:A:452:LEU:H	1.62	0.64
1:A:536:VAL:HB	1:A:542:ILE:HD13	1.80	0.63
1:A:151:GLN:NE2	6:A:1087:HOH:O	2.30	0.63
1:A:449:GLU:OE1	1:A:449:GLU:N	2.32	0.63
2:B:26:LEU:H	4:B:504:DMS:C1	2.13	0.61
1:A:543:GLY:H	2:B:271:LEU:CD1	2.13	0.60
1:A:480:GLN:NE2	6:A:1065:HOH:O	2.35	0.60
2:B:26:LEU:H	4:B:504:DMS:H11	1.67	0.59
2:B:344:ARG:HG2	2:B:345:MET:H	1.67	0.58
1:A:195:ILE:HD12	1:A:195:ILE:H	1.69	0.57
1:A:114:ALA:HB2	1:A:214:LEU:HD13	1.86	0.57
1:A:428:GLN:H	4:A:602:DMS:C2	2.14	0.56
2:B:181:TYR:OH	6:B:728:HOH:O	2.18	0.56
2:B:91:GLN:NE2	2:B:94:ILE:HG23	2.21	0.56
2:B:99:GLY:HA2	2:B:102:LYS:HD2	1.87	0.56
2:B:344:ARG:HG2	2:B:345:MET:N	2.22	0.54
1:A:64:LYS:NZ	1:A:65:LYS:O	2.41	0.54
1:A:73:LYS:NZ	1:A:146:TYR:OH	2.41	0.53
2:B:268:SER:O	2:B:271:LEU:HD11	2.08	0.53
1:A:323:LYS:NZ	1:A:344:GLU:OE2	2.43	0.52
2:B:390:TRP:HE1	4:B:505:DMS:H13	1.74	0.52
1:A:182:GLN:NE2	1:A:184:MET:O	2.41	0.51
1:A:46:LYS:NZ	1:A:116:PHE:HB3	2.25	0.51

*Continued on next page...*

*Continued from previous page...*

Atom-1	Atom-2	Interatomic distance (Å)	Clash overlap (Å)
1:A:334:GLN:H	4:A:606:DMS:C2	2.24	0.51
1:A:542:ILE:N	1:A:546:GLU:OE2	2.44	0.51
2:B:229:VAL:HG12	2:B:230:GLN:H	1.76	0.50
5:A:607:T27:H15	5:A:607:T27:N3	2.28	0.49
2:B:267:LEU:O	2:B:270:LEU:HB2	2.13	0.48
1:A:258:GLN:HG2	1:A:283:LEU:HD21	1.95	0.48
1:A:38:CYS:SG	1:A:132:ILE:HD11	2.54	0.48
1:A:543:GLY:CA	2:B:271:LEU:HD13	2.44	0.48
2:B:170:PRO:HA	2:B:173:LYS:HE3	1.96	0.48
1:A:28:GLU:HG3	1:A:135:ILE:HD12	1.96	0.48
1:A:65:LYS:HE2	1:A:70:LYS:HB2	1.96	0.47
1:A:542:ILE:HA	2:B:271:LEU:HD21	1.96	0.47
1:A:249:LYS:HG3	1:A:252:TRP:CE2	2.50	0.47
2:B:346:ARG:CZ	2:B:358:GLU:HB3	2.44	0.46
2:B:271:LEU:H	2:B:271:LEU:HG	1.34	0.46
1:A:369:THR:O	1:A:373[A]:GLN:HG2	2.15	0.46
1:A:448:ARG:HE	1:A:474:ASN:HD22	1.62	0.46
2:B:362:LYS:HD2	2:B:362:LYS:HA	1.70	0.46
1:A:544:GLY:CA	2:B:274:THR:HG22	2.45	0.46
2:B:390:TRP:HE1	4:B:505:DMS:H11	1.80	0.46
2:B:345:MET:HB3	2:B:349:HIS:NE2	2.30	0.46
1:A:64:LYS:HE2	1:A:68:SER:O	2.16	0.45
1:A:68:SER:OG	1:A:69:THR:N	2.49	0.45
1:A:94:ILE:HG13	1:A:95:PRO:HD2	1.99	0.45
2:B:376:LYS:HD2	2:B:401:GLU:HB2	1.98	0.45
1:A:542:ILE:O	1:A:545:ASN:HB3	2.17	0.44
1:A:115:TYR:HA	1:A:160:PHE:CE1	2.52	0.44
1:A:516:GLU:CD	1:A:516:GLU:H	2.22	0.44
2:B:342:TYR:HB3	2:B:344:ARG:NH1	2.32	0.44
2:B:416:GLN:NE2	6:B:739:HOH:O	2.50	0.44
2:B:103:LYS:HD3	2:B:103:LYS:HA	1.89	0.43
2:B:169:GLU:O	6:B:839:HOH:O	2.21	0.43
1:A:397:THR:HG23	1:A:425:LEU:HG	2.01	0.43
2:B:115:TYR:OH	2:B:182:GLN:NE2	2.48	0.43
1:A:202:ILE:O	1:A:206:ARG:HG3	2.18	0.43
2:B:344:ARG:CZ	2:B:346:ARG:NH2	2.81	0.43
1:A:271:TYR:HA	1:A:272:PRO:HD3	1.84	0.42
1:A:334:GLN:H	4:A:606:DMS:H22	1.84	0.42
1:A:356:ARG:HH12	1:A:512:LYS:HZ3	1.68	0.42
1:A:210:LEU:HD12	1:A:210:LEU:HA	1.91	0.42
1:A:494:ASN:HB3	2:B:277:LEU:HD12	2.02	0.41

*Continued on next page...*

Continued from previous page...

Atom-1	Atom-2	Interatomic distance (Å)	Clash overlap (Å)
2:B:170:PRO:HA	2:B:173:LYS:HG2	2.01	0.41
1:A:447:ASN:HB3	1:A:450:THR:HG22	2.01	0.41
2:B:348:ALA:HB2	2:B:354:LYS:HG2	2.02	0.41
1:A:46:LYS:HZ1	1:A:116:PHE:HB3	1.85	0.41
1:A:254:VAL:HG23	1:A:293:ILE:HD11	2.02	0.41
1:A:196:GLY:O	1:A:199:ARG:HG2	2.21	0.41
1:A:379:SER:CB	1:A:387:PRO:HD3	2.51	0.41
2:B:201:LYS:HD3	2:B:201:LYS:HA	1.78	0.41
1:A:540:LYS:HD3	1:A:540:LYS:HA	1.72	0.41
2:B:13:LYS:HB3	2:B:13:LYS:HE2	1.84	0.41
2:B:70:LYS:HA	2:B:70:LYS:HD2	1.87	0.40
1:A:90:VAL:HG13	2:B:140:PRO:HB3	2.03	0.40
2:B:70:LYS:HE3	2:B:71:TRP:O	2.21	0.40
1:A:543:GLY:HA3	2:B:271:LEU:HD13	2.03	0.40

All (1) symmetry-related close contacts are listed below. The label for Atom-2 includes the symmetry operator and encoded unit-cell translations to be applied.

Atom-1	Atom-2	Interatomic distance (Å)	Clash overlap (Å)
6:A:1024:HOH:O	6:B:815:HOH:O[4_545]	2.18	0.02

## 5.3 Torsion angles [i](#)

### 5.3.1 Protein backbone [i](#)

In the following table, the Percentiles column shows the percent Ramachandran outliers of the chain as a percentile score with respect to all X-ray entries followed by that with respect to entries of similar resolution.

The Analysed column shows the number of residues for which the backbone conformation was analysed, and the total number of residues.

Mol	Chain	Analysed	Favoured	Allowed	Outliers	Percentiles	
1	A	555/557 (100%)	545 (98%)	10 (2%)	0	100	100
2	B	409/429 (95%)	401 (98%)	8 (2%)	0	100	100
All	All	964/986 (98%)	946 (98%)	18 (2%)	0	100	100

There are no Ramachandran outliers to report.

### 5.3.2 Protein sidechains [i](#)

In the following table, the Percentiles column shows the percent sidechain outliers of the chain as a percentile score with respect to all X-ray entries followed by that with respect to entries of similar resolution.

The Analysed column shows the number of residues for which the sidechain conformation was analysed, and the total number of residues.

Mol	Chain	Analysed	Rotameric	Outliers	Percentiles	
1	A	496/495 (100%)	491 (99%)	5 (1%)	76	69
2	B	375/390 (96%)	369 (98%)	6 (2%)	62	49
All	All	871/885 (98%)	860 (99%)	11 (1%)	69	58

All (11) residues with a non-rotameric sidechain are listed below:

Mol	Chain	Res	Type
1	A	64	LYS
1	A	92	LEU
1	A	283	LEU
1	A	290	THR
1	A	503	LEU
2	B	7	THR
2	B	169	GLU
2	B	271	LEU
2	B	344	ARG
2	B	398	TRP
2	B	413	LEU

Sometimes sidechains can be flipped to improve hydrogen bonding and reduce clashes. There are no such sidechains identified.

### 5.3.3 RNA [i](#)

There are no RNA molecules in this entry.

## 5.4 Non-standard residues in protein, DNA, RNA chains [i](#)

There are no non-standard protein/DNA/RNA residues in this entry.

## 5.5 Carbohydrates [i](#)

There are no monosaccharides in this entry.

## 5.6 Ligand geometry [i](#)

12 ligands are modelled in this entry.

In the following table, the Counts columns list the number of bonds (or angles) for which Mogul statistics could be retrieved, the number of bonds (or angles) that are observed in the model and the number of bonds (or angles) that are defined in the Chemical Component Dictionary. The Link column lists molecule types, if any, to which the group is linked. The Z score for a bond length (or angle) is the number of standard deviations the observed value is removed from the expected value. A bond length (or angle) with  $|Z| > 2$  is considered an outlier worth inspection. RMSZ is the root-mean-square of all Z scores of the bond lengths (or angles).

Mol	Type	Chain	Res	Link	Bond lengths			Bond angles		
					Counts	RMSZ	# Z  > 2	Counts	RMSZ	# Z  > 2
4	DMS	A	603	-	3,3,3	0.66	0	3,3,3	0.47	0
4	DMS	B	504	-	3,3,3	0.67	0	3,3,3	1.03	0
3	1QP	A	601	-	12,15,15	2.36	2 (16%)	11,20,20	2.28	2 (18%)
4	DMS	B	502	-	3,3,3	0.68	0	3,3,3	0.47	0
4	DMS	B	503	-	3,3,3	0.67	0	3,3,3	0.73	0
5	T27	A	607	-	30,30,30	1.03	3 (10%)	39,40,40	1.96	5 (12%)
4	DMS	B	505	-	3,3,3	0.59	0	3,3,3	0.57	0
4	DMS	A	606	-	3,3,3	0.63	0	3,3,3	0.76	0
4	DMS	B	501	-	3,3,3	0.65	0	3,3,3	0.58	0
4	DMS	A	605	-	3,3,3	0.67	0	3,3,3	0.72	0
4	DMS	A	602	-	3,3,3	0.54	0	3,3,3	0.72	0
4	DMS	A	604	-	3,3,3	0.65	0	3,3,3	0.48	0

In the following table, the Chirals column lists the number of chiral outliers, the number of chiral centers analysed, the number of these observed in the model and the number defined in the Chemical Component Dictionary. Similar counts are reported in the Torsion and Rings columns. '-' means no outliers of that kind were identified.

Mol	Type	Chain	Res	Link	Chirals	Torsions	Rings
5	T27	A	607	-	-	0/13/14/14	0/3/3/3
3	1QP	A	601	-	-	2/7/7/7	0/2/2/2

All (5) bond length outliers are listed below:

Mol	Chain	Res	Type	Atoms	Z	Observed(Å)	Ideal(Å)
3	A	601	1QP	C3-N1	-7.17	1.31	1.40

*Continued on next page...*

Continued from previous page...

Mol	Chain	Res	Type	Atoms	Z	Observed(Å)	Ideal(Å)
5	A	607	T27	C12-N4	3.18	1.43	1.36
3	A	601	1QP	O2-C1	2.95	1.41	1.33
5	A	607	T27	C11-N1	2.59	1.43	1.38
5	A	607	T27	C13-C19	2.20	1.49	1.44

All (7) bond angle outliers are listed below:

Mol	Chain	Res	Type	Atoms	Z	Observed(°)	Ideal(°)
5	A	607	T27	C9-N2-C12	6.38	121.11	115.45
5	A	607	T27	C10-C9-N2	-5.92	116.60	123.96
5	A	607	T27	C9-C10-C11	5.80	120.55	116.76
3	A	601	1QP	C8-N2-N1	5.67	107.83	103.70
3	A	601	1QP	O2-C1-C2	4.70	118.82	111.56
5	A	607	T27	N2-C12-N3	-2.72	123.97	126.55
5	A	607	T27	C6-N1-C11	-2.30	120.02	124.18

There are no chirality outliers.

All (2) torsion outliers are listed below:

Mol	Chain	Res	Type	Atoms
3	A	601	1QP	C2-C1-O2-C9
3	A	601	1QP	O1-C1-O2-C9

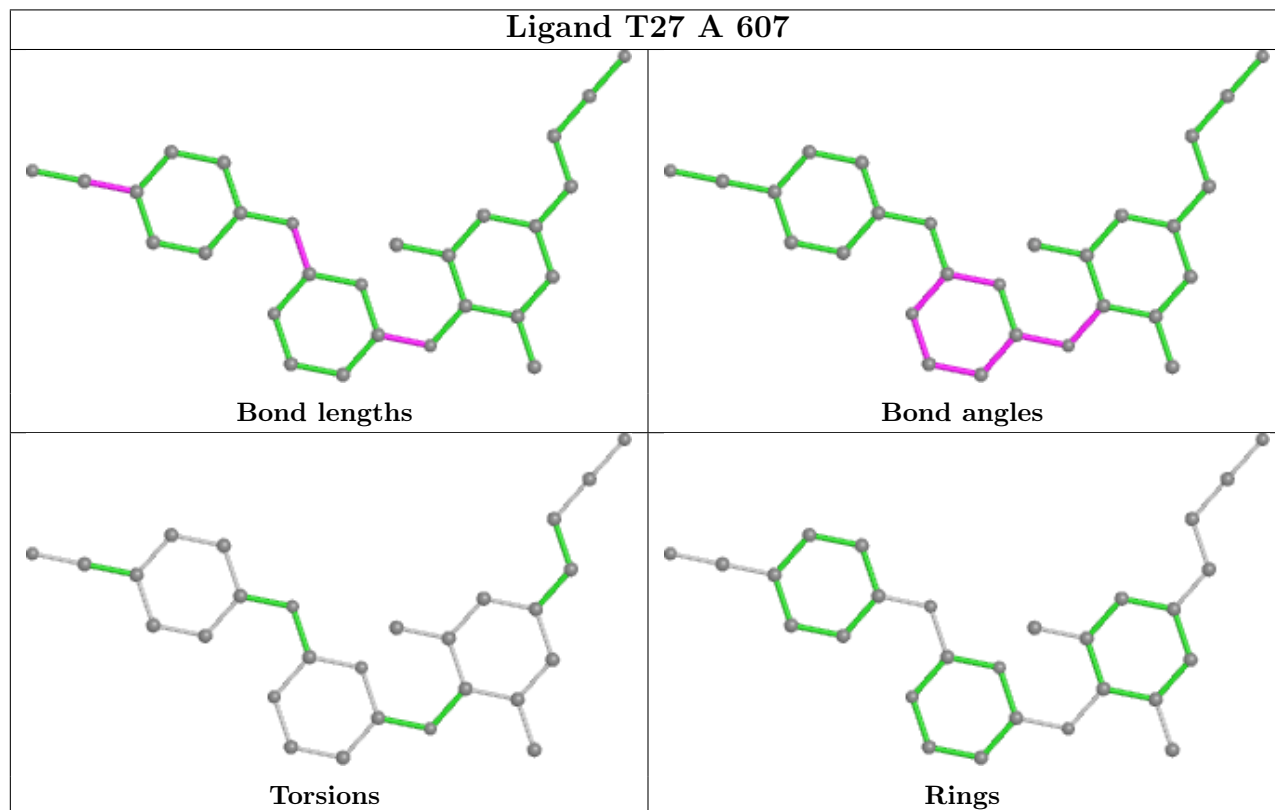
There are no ring outliers.

5 monomers are involved in 11 short contacts:

Mol	Chain	Res	Type	Clashes	Symm-Clashes
4	B	504	DMS	3	0
5	A	607	T27	1	0
4	B	505	DMS	3	0
4	A	606	DMS	2	0
4	A	602	DMS	2	0

The following is a two-dimensional graphical depiction of Mogul quality analysis of bond lengths, bond angles, torsion angles, and ring geometry for all instances of the Ligand of Interest. In addition, ligands with molecular weight > 250 and outliers as shown on the validation Tables will also be included. For torsion angles, if less than 5% of the Mogul distribution of torsion angles is within 10 degrees of the torsion angle in question, then that torsion angle is considered an outlier. Any bond that is central to one or more torsion angles identified as an outlier by Mogul will be highlighted in the graph. For rings, the root-mean-square deviation (RMSD) between the ring in question and similar rings identified by Mogul is calculated over all ring torsion angles. If the

average RMSD is greater than 60 degrees and the minimal RMSD between the ring in question and any Mogul-identified rings is also greater than 60 degrees, then that ring is considered an outlier. The outliers are highlighted in purple. The color gray indicates Mogul did not find sufficient equivalents in the CSD to analyse the geometry.



## 5.7 Other polymers [\(i\)](#)

There are no such residues in this entry.

## 5.8 Polymer linkage issues [\(i\)](#)

There are no chain breaks in this entry.



## 6 Fit of model and data

### 6.1 Protein, DNA and RNA chains

In the following table, the column labelled ‘#RSRZ > 2’ contains the number (and percentage) of RSRZ outliers, followed by percent RSRZ outliers for the chain as percentile scores relative to all X-ray entries and entries of similar resolution. The OWAB column contains the minimum, median, 95<sup>th</sup> percentile and maximum values of the occupancy-weighted average B-factor per residue. The column labelled ‘Q < 0.9’ lists the number of (and percentage) of residues with an average occupancy less than 0.9.

Mol	Chain	Analysed	<RSRZ>	#RSRZ>2	OWAB(Å <sup>2</sup> )	Q<0.9
1	A	556/557 (99%)	0.29	50 (8%) <b>9</b>   <b>9</b>	17, 36, 85, 162	0
2	B	412/429 (96%)	0.63	52 (12%) <b>3</b>   <b>3</b>	18, 41, 100, 158	0
All	All	968/986 (98%)	0.43	102 (10%) <b>6</b>   <b>6</b>	17, 38, 93, 162	0

All (102) RSRZ outliers are listed below:

Mol	Chain	Res	Type	RSRZ
2	B	90	VAL	12.6
2	B	214	LEU	11.3
1	A	68	SER	11.3
2	B	88	TRP	11.2
2	B	92	LEU	11.2
1	A	67	ASP	10.9
1	A	218	ASP	8.6
1	A	285	GLY	8.3
1	A	219	LYS	7.2
1	A	287	LYS	7.1
1	A	546	GLU	7.1
2	B	89	GLU	7.1
2	B	5	ILE	6.8
2	B	345	MET	6.5
1	A	289	LEU	6.5
2	B	346	ARG	6.4
2	B	67	ASP	6.2
2	B	344	ARG	6.1
1	A	69	THR	6.0
2	B	217	TRP	5.7
1	A	66	LYS	5.7
2	B	6	GLU	5.6
1	A	286	THR	5.3
1	A	220	LYS	5.1

*Continued on next page...*

*Continued from previous page...*

<b>Mol</b>	<b>Chain</b>	<b>Res</b>	<b>Type</b>	<b>RSRZ</b>
2	B	213	GLY	5.1
2	B	343	ALA	5.0
2	B	272	ARG	5.0
2	B	209	LEU	4.9
1	A	221	HIS	4.9
2	B	93	GLY	4.9
2	B	228	THR	4.7
1	A	292	VAL	4.6
2	B	94	ILE	4.5
2	B	211	ARG	4.4
1	A	283	LEU	4.4
1	A	290	THR	4.4
2	B	218	MET	4.3
2	B	91	GLN	4.2
2	B	95	PRO	4.2
1	A	64	LYS	4.1
1	A	254	VAL	4.0
1	A	282	LEU	4.0
1	A	553	SER	3.9
1	A	548	VAL	3.9
2	B	66	LYS	3.9
1	A	358	ARG	3.7
1	A	51	GLY	3.7
2	B	347	GLY	3.7
2	B	69	THR	3.6
1	A	294	PRO	3.6
2	B	168	LEU	3.6
1	A	70	LYS	3.6
2	B	173	LYS	3.4
1	A	284	ARG	3.4
1	A	24	TRP	3.4
1	A	116	PHE	3.4
2	B	197	GLN	3.3
1	A	288	ALA	3.3
1	A	93	GLY	3.3
2	B	219	GLY	3.3
2	B	202	ILE	3.3
1	A	543	GLY	3.2
1	A	291	GLU	3.2
2	B	200	THR	3.2
2	B	212	TRP	3.2
1	A	222	GLN	3.1

*Continued on next page...*

*Continued from previous page...*

Mol	Chain	Res	Type	RSRZ
2	B	170	PRO	3.1
2	B	167	ILE	3.1
2	B	195	ILE	3.1
1	A	295	LEU	3.1
2	B	271	LEU	3.0
1	A	72	ARG	3.0
1	A	115	TYR	3.0
2	B	204	GLU	3.0
2	B	87	PHE	2.9
1	A	250	ASP	2.8
1	A	554	ALA	2.8
2	B	174	GLN	2.8
1	A	252	TRP	2.8
2	B	171	PHE	2.7
2	B	270	LEU	2.6
2	B	348	ALA	2.6
2	B	7	THR	2.6
2	B	210	LEU	2.6
1	A	52	PRO	2.5
1	A	293	ILE	2.4
2	B	166	LYS	2.2
1	A	297	GLU	2.2
1	A	63	ILE	2.2
1	A	542	ILE	2.1
1	A	298	GLU	2.1
2	B	208	HIS	2.1
2	B	349	HIS	2.1
2	B	203	GLU	2.1
1	A	65	LYS	2.1
2	B	285	GLU	2.1
1	A	301	LEU	2.1
1	A	541	GLY	2.1
2	B	196	GLY	2.1
1	A	552	VAL	2.0
2	B	206	ARG	2.0
1	A	214	LEU	2.0

## 6.2 Non-standard residues in protein, DNA, RNA chains

There are no non-standard protein/DNA/RNA residues in this entry.

### 6.3 Carbohydrates [i](#)

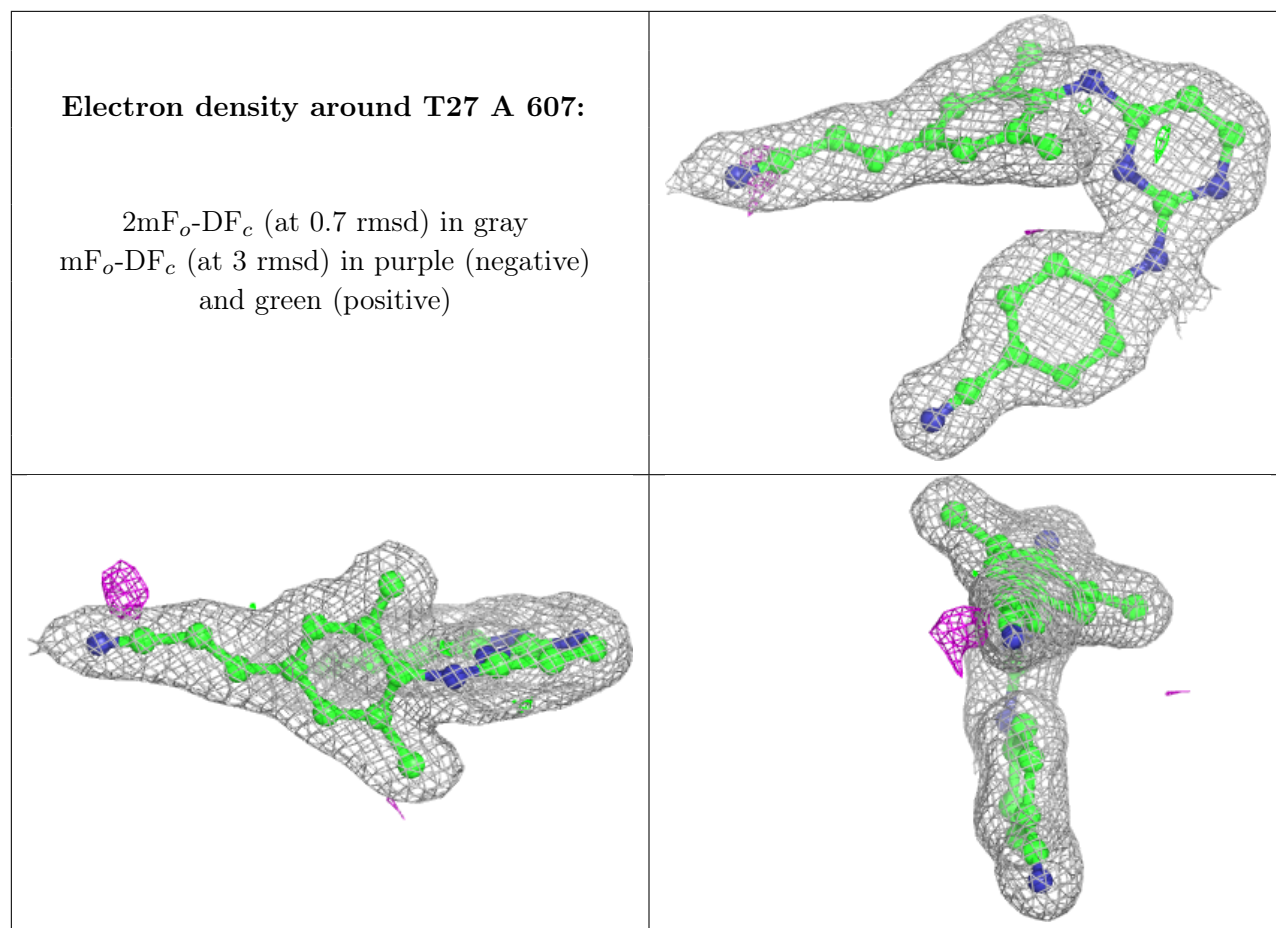
There are no monosaccharides in this entry.

### 6.4 Ligands [i](#)

In the following table, the Atoms column lists the number of modelled atoms in the group and the number defined in the chemical component dictionary. The B-factors column lists the minimum, median, 95<sup>th</sup> percentile and maximum values of B factors of atoms in the group. The column labelled 'Q< 0.9' lists the number of atoms with occupancy less than 0.9.

Mol	Type	Chain	Res	Atoms	RSCC	RSR	B-factors(Å <sup>2</sup> )	Q<0.9
4	DMS	B	504	4/4	0.72	0.21	26,39,40,67	0
4	DMS	A	606	4/4	0.91	0.13	42,52,57,58	0
3	1QP	A	601	14/14	0.95	0.10	24,32,40,41	0
4	DMS	A	605	4/4	0.95	0.13	30,34,36,45	0
4	DMS	A	603	4/4	0.96	0.09	60,83,86,86	0
4	DMS	B	501	4/4	0.96	0.17	35,38,44,156	0
4	DMS	B	503	4/4	0.96	0.11	55,64,67,70	0
4	DMS	A	602	4/4	0.96	0.12	30,31,36,42	0
5	T27	A	607	28/28	0.96	0.11	17,23,29,30	0
4	DMS	B	505	4/4	0.97	0.15	24,39,44,65	0
4	DMS	A	604	4/4	0.97	0.12	43,71,73,101	0
4	DMS	B	502	4/4	0.98	0.10	30,49,57,71	0

The following is a graphical depiction of the model fit to experimental electron density of all instances of the Ligand of Interest. In addition, ligands with molecular weight > 250 and outliers as shown on the geometry validation Tables will also be included. Each fit is shown from different orientation to approximate a three-dimensional view.



## 6.5 Other polymers [i](#)

There are no such residues in this entry.