



Full wwPDB X-ray Structure Validation Report ⓘ

Mar 9, 2018 – 08:27 pm GMT

PDB ID : 4KFN
Title : Structure-Based Discovery of Novel Amide-Containing Nicotinamide Phospho
ribosyltransferase (Nampt) Inhibitors
Authors : Zheng, X.; Bauer, P.; Baumeister, T.; Buckmelter, A.J.; Caligiuri, M.; Clod-
felter, K.H.; Han, B.; Ho, Y.; Kley, N.; Lin, J.; Reynolds, D.J.; Sharma, G.;
Smith, C.C.; Wang, Z.; Dragovich, P.S.; Gunzner-Toste, J.; Liederer, B.M.;
Ly, J.; O'Brien, T.; Oh, A.; Wang, L.; Wang, W.; Xiao, Y.; Zak, M.; Zhao,
G.; Yuen, P.; Bair, K.W.
Deposited on : 2013-04-27
Resolution : 1.60 Å(reported)

This is a Full wwPDB X-ray Structure Validation Report for a publicly released PDB entry.

We welcome your comments at validation@mail.wwpdb.org

A user guide is available at

<https://www.wwpdb.org/validation/2017/XrayValidationReportHelp>

with specific help available everywhere you see the ⓘ symbol.

The following versions of software and data (see [references ⓘ](#)) were used in the production of this report:

MolProbity : 4.02b-467
Mogul : 1.7.3 (157068), CSD as539be (2018)
Xtriage (Phenix) : 1.13
EDS : trunk30967
Percentile statistics : 20171227.v01 (using entries in the PDB archive December 27th 2017)
Refmac : 5.8.0158
CCP4 : 7.0 (Gargrove)
Ideal geometry (proteins) : Engh & Huber (2001)
Ideal geometry (DNA, RNA) : Parkinson et al. (1996)
Validation Pipeline (wwPDB-VP) : trunk30967

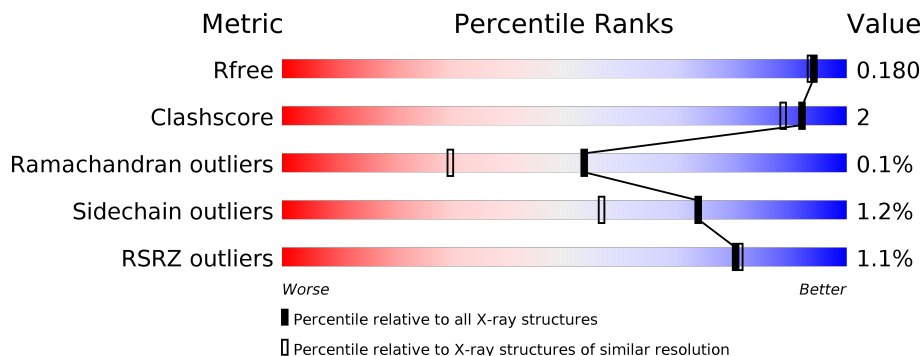
1 Overall quality at a glance

The following experimental techniques were used to determine the structure:

X-RAY DIFFRACTION

The reported resolution of this entry is 1.60 Å.

Percentile scores (ranging between 0-100) for global validation metrics of the entry are shown in the following graphic. The table shows the number of entries on which the scores are based.



Metric	Whole archive (#Entries)	Similar resolution (#Entries, resolution range(Å))
R_{free}	111664	2957 (1.60-1.60)
Clashscore	122126	3202 (1.60-1.60)
Ramachandran outliers	120053	3117 (1.60-1.60)
Sidechain outliers	120020	3116 (1.60-1.60)
RSRZ outliers	108989	2883 (1.60-1.60)

The table below summarises the geometric issues observed across the polymeric chains and their fit to the electron density. The red, orange, yellow and green segments on the lower bar indicate the fraction of residues that contain outliers for ≥ 3 , 2, 1 and 0 types of geometric quality criteria. A grey segment represents the fraction of residues that are not modelled. The numeric value for each fraction is indicated below the corresponding segment, with a dot representing fractions $\leq 5\%$. The upper red bar (where present) indicates the fraction of residues that have poor fit to the electron density. The numeric value is given above the bar.

Mol	Chain	Length	Quality of chain
1	A	501	 % 91% 5% 6%
1	B	501	 % 89% 5% 6%

2 Entry composition [i](#)

There are 5 unique types of molecules in this entry. The entry contains 8865 atoms, of which 0 are hydrogens and 0 are deuteriums.

In the tables below, the ZeroOcc column contains the number of atoms modelled with zero occupancy, the AltConf column contains the number of residues with at least one atom in alternate conformation and the Trace column contains the number of residues modelled with at most 2 atoms.

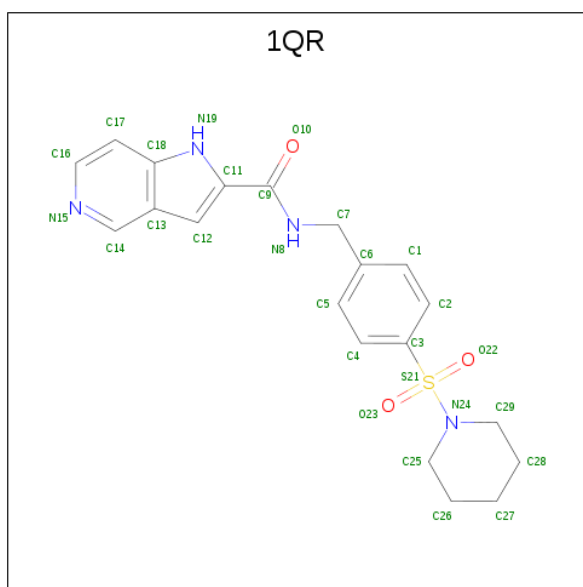
- Molecule 1 is a protein called Nicotinamide phosphoribosyltransferase.

Mol	Chain	Residues	Atoms					ZeroOcc	AltConf	Trace
			Total	C	N	O	S			
1	A	473	3796	2439	627	723	7	0	2	0
1	B	473	3778	2429	624	718	7	0	0	0

There are 20 discrepancies between the modelled and reference sequences:

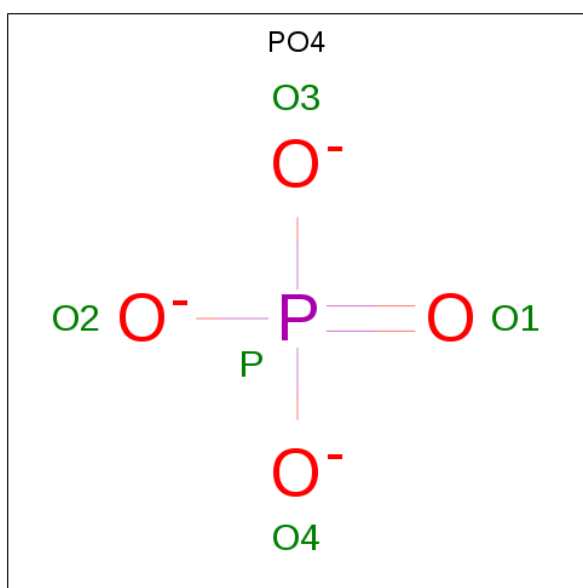
Chain	Residue	Modelled	Actual	Comment	Reference
A	492	LEU	-	EXPRESSION TAG	UNP P43490
A	493	GLU	-	EXPRESSION TAG	UNP P43490
A	494	HIS	-	EXPRESSION TAG	UNP P43490
A	495	HIS	-	EXPRESSION TAG	UNP P43490
A	496	HIS	-	EXPRESSION TAG	UNP P43490
A	497	HIS	-	EXPRESSION TAG	UNP P43490
A	498	HIS	-	EXPRESSION TAG	UNP P43490
A	499	HIS	-	EXPRESSION TAG	UNP P43490
A	500	HIS	-	EXPRESSION TAG	UNP P43490
A	501	HIS	-	EXPRESSION TAG	UNP P43490
B	492	LEU	-	EXPRESSION TAG	UNP P43490
B	493	GLU	-	EXPRESSION TAG	UNP P43490
B	494	HIS	-	EXPRESSION TAG	UNP P43490
B	495	HIS	-	EXPRESSION TAG	UNP P43490
B	496	HIS	-	EXPRESSION TAG	UNP P43490
B	497	HIS	-	EXPRESSION TAG	UNP P43490
B	498	HIS	-	EXPRESSION TAG	UNP P43490
B	499	HIS	-	EXPRESSION TAG	UNP P43490
B	500	HIS	-	EXPRESSION TAG	UNP P43490
B	501	HIS	-	EXPRESSION TAG	UNP P43490

- Molecule 2 is N-[4-(piperidin-1-ylsulfonyl)benzyl]-1H-pyrrolo[3,2-c]pyridine-2-carboxamide (three-letter code: 1QR) (formula: C₂₀H₂₂N₄O₃S).



Mol	Chain	Residues	Atoms				ZeroOcc	AltConf	
2	A	1	Total	C	N	O	S	0	0
			28	20	4	3	1		
2	B	1	Total	C	N	O	S	0	0
			28	20	4	3	1		

- Molecule 3 is PHOSPHATE ION (three-letter code: PO4) (formula: O₄P).



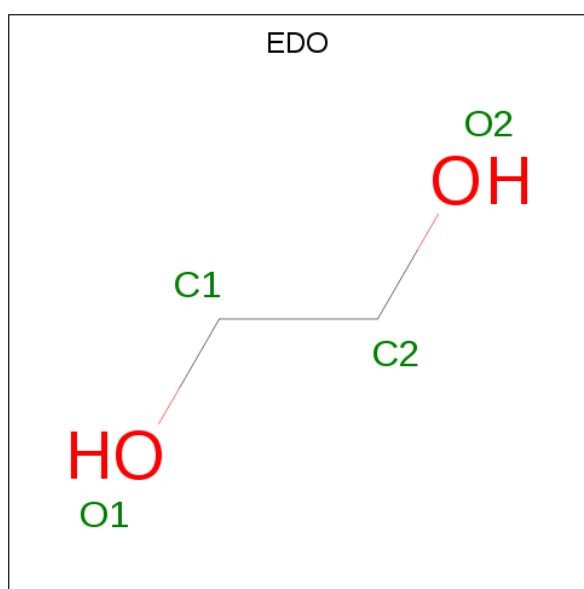
Mol	Chain	Residues	Atoms		ZeroOcc	AltConf	
3	A	1	Total	O	P	0	0
			5	4	1		
3	A	1	Total	O	P	0	0
			5	4	1		

Continued on next page...

Continued from previous page...

Mol	Chain	Residues	Atoms	ZeroOcc	AltConf
3	A	1	Total O P 5 4 1	0	0
3	B	1	Total O P 5 4 1	0	0
3	B	1	Total O P 5 4 1	0	0
3	B	1	Total O P 5 4 1	0	0

- Molecule 4 is 1,2-ETHANEDIOL (three-letter code: EDO) (formula: C₂H₆O₂).



Mol	Chain	Residues	Atoms	ZeroOcc	AltConf
4	A	1	Total C O 4 2 2	0	0
4	A	1	Total C O 4 2 2	0	0
4	A	1	Total C O 4 2 2	0	0
4	A	1	Total C O 4 2 2	0	0
4	A	1	Total C O 4 2 2	0	0
4	B	1	Total C O 4 2 2	0	0
4	B	1	Total C O 4 2 2	0	0

Continued on next page...

Continued from previous page...

Mol	Chain	Residues	Atoms	ZeroOcc	AltConf
4	B	1	Total C O 4 2 2	0	0
4	B	1	Total C O 4 2 2	0	0
4	B	1	Total C O 4 2 2	0	0

- Molecule 5 is water.

Mol	Chain	Residues	Atoms	ZeroOcc	AltConf
5	A	600	Total O 600 600	0	0
5	B	565	Total O 565 565	0	0

4 Data and refinement statistics

Property	Value	Source
Space group	P 1 21 1	Depositor
Cell constants a, b, c, α , β , γ	60.48Å 106.60Å 83.00Å 90.00° 96.68° 90.00°	Depositor
Resolution (Å)	42.28 – 1.60 44.76 – 1.60	Depositor EDS
% Data completeness (in resolution range)	97.5 (42.28-1.60) 97.5 (44.76-1.60)	Depositor EDS
R_{merge}	(Not available)	Depositor
R_{sym}	(Not available)	Depositor
$\langle I/\sigma(I) \rangle$ ¹	1.76 (at 1.59Å)	Xtrriage
Refinement program	PHENIX (phenix.refine: 1.7.3_928)	Depositor
R, R_{free}	0.156 , 0.183 0.151 , 0.180	Depositor DCC
R_{free} test set	6745 reflections (4.99%)	wwPDB-VP
Wilson B-factor (Å ²)	14.6	Xtrriage
Anisotropy	0.553	Xtrriage
Bulk solvent k_{sol} (e/Å ³), B_{sol} (Å ²)	0.37 , 50.1	EDS
L-test for twinning ²	$\langle L \rangle = 0.51$, $\langle L^2 \rangle = 0.35$	Xtrriage
Estimated twinning fraction	No twinning to report.	Xtrriage
F_o, F_c correlation	0.97	EDS
Total number of atoms	8865	wwPDB-VP
Average B, all atoms (Å ²)	14.0	wwPDB-VP

Xtrriage's analysis on translational NCS is as follows: *The largest off-origin peak in the Patterson function is 4.81% of the height of the origin peak. No significant pseudotranslation is detected.*

¹Intensities estimated from amplitudes.

²Theoretical values of $\langle |L| \rangle$, $\langle L^2 \rangle$ for acentric reflections are 0.5, 0.333 respectively for untwinned datasets, and 0.375, 0.2 for perfectly twinned datasets.

5 Model quality i

5.1 Standard geometry i

Bond lengths and bond angles in the following residue types are not validated in this section: PO4, EDO, 1QR

The Z score for a bond length (or angle) is the number of standard deviations the observed value is removed from the expected value. A bond length (or angle) with $|Z| > 5$ is considered an outlier worth inspection. RMSZ is the root-mean-square of all Z scores of the bond lengths (or angles).

Mol	Chain	Bond lengths		Bond angles	
		RMSZ	# Z >5	RMSZ	# Z >5
1	A	0.42	0/3884	0.59	2/5262 (0.0%)
1	B	0.42	0/3866	0.58	0/5237
All	All	0.42	0/7750	0.58	2/10499 (0.0%)

There are no bond length outliers.

All (2) bond angle outliers are listed below:

Mol	Chain	Res	Type	Atoms	Z	Observed(°)	Ideal(°)
1	A	311	ARG	NE-CZ-NH1	7.60	124.10	120.30
1	A	311	ARG	NE-CZ-NH2	-6.46	117.07	120.30

There are no chirality outliers.

There are no planarity outliers.

5.2 Too-close contacts i

In the following table, the Non-H and H(model) columns list the number of non-hydrogen atoms and hydrogen atoms in the chain respectively. The H(added) column lists the number of hydrogen atoms added and optimized by MolProbity. The Clashes column lists the number of clashes within the asymmetric unit, whereas Symm-Clashes lists symmetry related clashes.

Mol	Chain	Non-H	H(model)	H(added)	Clashes	Symm-Clashes
1	A	3796	0	3763	10	0
1	B	3778	0	3752	16	1
2	A	28	0	22	1	0
2	B	28	0	22	1	0
3	A	15	0	0	0	0
3	B	15	0	0	0	0
4	A	20	0	30	2	0

Continued on next page...

Continued from previous page...

Mol	Chain	Non-H	H(model)	H(added)	Clashes	Symm-Clashes
4	B	20	0	30	1	0
5	A	600	0	0	6	0
5	B	565	0	0	5	2
All	All	8865	0	7619	26	2

The all-atom clashscore is defined as the number of clashes found per 1000 atoms (including hydrogen atoms). The all-atom clashscore for this structure is 2.

All (26) close contacts within the same asymmetric unit are listed below, sorted by their clash magnitude.

Atom-1	Atom-2	Interatomic distance (Å)	Clash overlap (Å)
1:B:434:ARG:HG2	1:B:457:LEU:HD11	1.81	0.60
1:B:255:LYS:O	5:B:868:HOH:O	2.17	0.57
1:A:177:LEU:HD22	1:A:484:ILE:HD11	1.86	0.56
1:A:28:PRO:HB2	4:A:609:EDO:H21	1.91	0.53
5:A:1290:HOH:O	1:B:228:LYS:HD3	2.08	0.51
1:B:187:GLU:H	1:B:187:GLU:CD	2.14	0.50
1:A:139:PRO:HG3	4:A:608:EDO:H22	1.93	0.50
1:B:216:LYS:HG3	4:B:608:EDO:H21	1.94	0.49
1:B:151:ILE:HG23	5:B:705:HOH:O	2.12	0.49
1:A:235:ASP:OD1	5:A:1108:HOH:O	2.20	0.49
1:A:23:TYR:O	5:A:1152:HOH:O	2.20	0.47
1:B:191:HIS:CE1	2:B:601:1QR:H10	2.49	0.47
1:B:333:PRO:O	5:B:1051:HOH:O	2.20	0.47
1:A:54:TYR:N	5:A:1230:HOH:O	2.24	0.46
1:B:151:ILE:HG22	5:B:744:HOH:O	2.14	0.46
1:B:318:LEU:HD13	1:B:364:ILE:HA	1.98	0.45
1:B:148:ILE:O	1:B:151:ILE:HD13	2.19	0.43
1:A:439:ASN:HB3	5:A:1158:HOH:O	2.19	0.42
1:A:82:GLU:HG3	5:A:1009:HOH:O	2.19	0.42
1:A:445:GLU:OE1	1:A:447:LYS:NZ	2.52	0.42
1:B:53:LYS:HD3	1:B:54:TYR:CD2	2.53	0.42
1:B:37:PHE:CZ	1:B:397:CYS:HB3	2.55	0.41
1:B:175:TYR:HB3	1:B:375:ILE:HG13	2.01	0.41
1:B:342:LYS:NZ	1:B:372:MET:HB2	2.35	0.41
1:A:191:HIS:CE1	2:A:601:1QR:H10	2.56	0.41
1:B:54:TYR:HA	5:B:1249:HOH:O	2.21	0.40

All (2) symmetry-related close contacts are listed below. The label for Atom-2 includes the symmetry operator and encoded unit-cell translations to be applied.

Atom-1	Atom-2	Interatomic distance (Å)	Clash overlap (Å)
5:B:1257:HOH:O	5:B:1265:HOH:O[2_546]	2.10	0.10
1:B:323:LYS:NZ	5:B:993:HOH:O[2_546]	2.14	0.06

5.3 Torsion angles [i](#)

5.3.1 Protein backbone [i](#)

In the following table, the Percentiles column shows the percent Ramachandran outliers of the chain as a percentile score with respect to all X-ray entries followed by that with respect to entries of similar resolution.

The Analysed column shows the number of residues for which the backbone conformation was analysed, and the total number of residues.

Mol	Chain	Analysed	Favoured	Allowed	Outliers	Percentiles	
1	A	471/501 (94%)	457 (97%)	13 (3%)	1 (0%)	49	27
1	B	469/501 (94%)	458 (98%)	11 (2%)	0	100	100
All	All	940/1002 (94%)	915 (97%)	24 (3%)	1 (0%)	53	30

All (1) Ramachandran outliers are listed below:

Mol	Chain	Res	Type
1	A	96	PHE

5.3.2 Protein sidechains [i](#)

In the following table, the Percentiles column shows the percent sidechain outliers of the chain as a percentile score with respect to all X-ray entries followed by that with respect to entries of similar resolution.

The Analysed column shows the number of residues for which the sidechain conformation was analysed, and the total number of residues.

Mol	Chain	Analysed	Rotameric	Outliers	Percentiles	
1	A	416/440 (94%)	412 (99%)	4 (1%)	78	63
1	B	414/440 (94%)	408 (99%)	6 (1%)	69	50
All	All	830/880 (94%)	820 (99%)	10 (1%)	74	56

All (10) residues with a non-rotameric sidechain are listed below:

Mol	Chain	Res	Type
1	A	18	TYR
1	A	195	TYR
1	A	458	LEU
1	A	486	LEU
1	B	18	TYR
1	B	53	LYS
1	B	94	ASP
1	B	151	ILE
1	B	178	GLU
1	B	195	TYR

Some sidechains can be flipped to improve hydrogen bonding and reduce clashes. There are no such sidechains identified.

5.3.3 RNA [i](#)

There are no RNA molecules in this entry.

5.4 Non-standard residues in protein, DNA, RNA chains [i](#)

There are no non-standard protein/DNA/RNA residues in this entry.

5.5 Carbohydrates [i](#)

There are no carbohydrates in this entry.

5.6 Ligand geometry [i](#)

18 ligands are modelled in this entry.

In the following table, the Counts columns list the number of bonds (or angles) for which Mogul statistics could be retrieved, the number of bonds (or angles) that are observed in the model and the number of bonds (or angles) that are defined in the Chemical Component Dictionary. The Link column lists molecule types, if any, to which the group is linked. The Z score for a bond length (or angle) is the number of standard deviations the observed value is removed from the expected value. A bond length (or angle) with $|Z| > 2$ is considered an outlier worth inspection. RMSZ is the root-mean-square of all Z scores of the bond lengths (or angles).

Mol	Type	Chain	Res	Link	Bond lengths			Bond angles		
					Counts	RMSZ	# Z > 2	Counts	RMSZ	# Z > 2
2	1QR	A	601	-	29,31,31	0.87	1 (3%)	38,44,44	2.19	5 (13%)

Mol	Type	Chain	Res	Link	Bond lengths			Bond angles		
					Counts	RMSZ	# Z > 2	Counts	RMSZ	# Z > 2
3	PO4	A	602	-	4,4,4	0.94	0	6,6,6	0.80	0
3	PO4	A	603	-	4,4,4	0.87	0	6,6,6	0.76	0
4	EDO	A	604	-	3,3,3	0.49	0	2,2,2	0.36	0
3	PO4	A	605	-	4,4,4	0.75	0	6,6,6	0.33	0
4	EDO	A	606	-	3,3,3	0.46	0	2,2,2	0.38	0
4	EDO	A	607	-	3,3,3	0.47	0	2,2,2	0.37	0
4	EDO	A	608	-	3,3,3	0.45	0	2,2,2	0.62	0
4	EDO	A	609	-	3,3,3	0.36	0	2,2,2	0.60	0
2	1QR	B	601	-	29,31,31	0.87	1 (3%)	38,44,44	2.07	5 (13%)
3	PO4	B	602	-	4,4,4	0.91	0	6,6,6	0.58	0
3	PO4	B	603	-	4,4,4	1.57	1 (25%)	6,6,6	1.29	1 (16%)
4	EDO	B	604	-	3,3,3	0.55	0	2,2,2	0.36	0
3	PO4	B	605	-	4,4,4	0.70	0	6,6,6	0.38	0
4	EDO	B	606	-	3,3,3	0.48	0	2,2,2	0.30	0
4	EDO	B	607	-	3,3,3	0.41	0	2,2,2	0.46	0
4	EDO	B	608	-	3,3,3	0.47	0	2,2,2	0.40	0
4	EDO	B	609	-	3,3,3	0.50	0	2,2,2	0.31	0

In the following table, the Chirals column lists the number of chiral outliers, the number of chiral centers analysed, the number of these observed in the model and the number defined in the Chemical Component Dictionary. Similar counts are reported in the Torsion and Rings columns. '-' means no outliers of that kind were identified.

Mol	Type	Chain	Res	Link	Chirals	Torsions	Rings
2	1QR	A	601	-	-	0/18/29/29	0/4/4/4
3	PO4	A	602	-	-	0/0/0/0	0/0/0/0
3	PO4	A	603	-	-	0/0/0/0	0/0/0/0
4	EDO	A	604	-	-	0/1/1/1	0/0/0/0
3	PO4	A	605	-	-	0/0/0/0	0/0/0/0
4	EDO	A	606	-	-	0/1/1/1	0/0/0/0
4	EDO	A	607	-	-	0/1/1/1	0/0/0/0
4	EDO	A	608	-	-	0/1/1/1	0/0/0/0
4	EDO	A	609	-	-	0/1/1/1	0/0/0/0
2	1QR	B	601	-	-	0/18/29/29	0/4/4/4
3	PO4	B	602	-	-	0/0/0/0	0/0/0/0
3	PO4	B	603	-	-	0/0/0/0	0/0/0/0
4	EDO	B	604	-	-	0/1/1/1	0/0/0/0
3	PO4	B	605	-	-	0/0/0/0	0/0/0/0
4	EDO	B	606	-	-	0/1/1/1	0/0/0/0
4	EDO	B	607	-	-	0/1/1/1	0/0/0/0
4	EDO	B	608	-	-	0/1/1/1	0/0/0/0
4	EDO	B	609	-	-	0/1/1/1	0/0/0/0

All (3) bond length outliers are listed below:

Mol	Chain	Res	Type	Atoms	Z	Observed(Å)	Ideal(Å)
3	B	603	PO4	P-O4	-2.78	1.44	1.54
2	A	601	1QR	S21-N24	2.74	1.67	1.63
2	B	601	1QR	S21-N24	2.76	1.67	1.63

All (11) bond angle outliers are listed below:

Mol	Chain	Res	Type	Atoms	Z	Observed(°)	Ideal(°)
2	A	601	1QR	C3-S21-N24	-7.55	98.17	107.30
2	B	601	1QR	C3-S21-N24	-7.46	98.28	107.30
2	B	601	1QR	O22-S21-N24	-2.15	104.70	106.69
2	A	601	1QR	C26-C25-N24	2.03	114.93	110.69
2	B	601	1QR	O23-S21-C3	2.20	110.84	108.02
2	A	601	1QR	O23-S21-C3	2.21	110.86	108.02
3	B	603	PO4	O4-P-O3	2.59	117.38	107.94
2	A	601	1QR	O23-S21-O22	2.77	124.04	119.50
2	B	601	1QR	O23-S21-O22	3.11	124.60	119.50
2	B	601	1QR	C25-N24-C29	7.46	120.50	112.12
2	A	601	1QR	C25-N24-C29	8.92	122.14	112.12

There are no chirality outliers.

There are no torsion outliers.

There are no ring outliers.

5 monomers are involved in 5 short contacts:

Mol	Chain	Res	Type	Clashes	Symm-Clashes
2	A	601	1QR	1	0
4	A	608	EDO	1	0
4	A	609	EDO	1	0
2	B	601	1QR	1	0
4	B	608	EDO	1	0

5.7 Other polymers [i](#)

There are no such residues in this entry.

5.8 Polymer linkage issues [i](#)

There are no chain breaks in this entry.

6 Fit of model and data [i](#)

6.1 Protein, DNA and RNA chains [i](#)

In the following table, the column labelled ‘#RSRZ > 2’ contains the number (and percentage) of RSRZ outliers, followed by percent RSRZ outliers for the chain as percentile scores relative to all X-ray entries and entries of similar resolution. The OWAB column contains the minimum, median, 95th percentile and maximum values of the occupancy-weighted average B-factor per residue. The column labelled ‘Q < 0.9’ lists the number of (and percentage) of residues with an average occupancy less than 0.9.

Mol	Chain	Analysed	<RSRZ>	#RSRZ>2	OWAB(Å ²)	Q<0.9
1	A	473/501 (94%)	-0.43	5 (1%) 80 81	3, 10, 25, 56	0
1	B	473/501 (94%)	-0.45	5 (1%) 80 81	3, 10, 26, 58	0
All	All	946/1002 (94%)	-0.44	10 (1%) 80 81	3, 10, 25, 58	0

All (10) RSRZ outliers are listed below:

Mol	Chain	Res	Type	RSRZ
1	B	52	VAL	5.8
1	B	488	ALA	5.1
1	A	489	ALA	4.1
1	A	488	ALA	2.9
1	B	409	LEU	2.9
1	B	489	ALA	2.6
1	A	53	LYS	2.6
1	A	236	PRO	2.3
1	A	486	LEU	2.2
1	B	451	GLU	2.2

6.2 Non-standard residues in protein, DNA, RNA chains [i](#)

There are no non-standard protein/DNA/RNA residues in this entry.

6.3 Carbohydrates [i](#)

There are no carbohydrates in this entry.

6.4 Ligands [i](#)

In the following table, the Atoms column lists the number of modelled atoms in the group and the number defined in the chemical component dictionary. The B-factors column lists the minimum, median, 95th percentile and maximum values of B factors of atoms in the group. The column labelled 'Q< 0.9' lists the number of atoms with occupancy less than 0.9.

Mol	Type	Chain	Res	Atoms	RSCC	RSR	B-factors(Å ²)	Q<0.9
4	EDO	A	608	4/4	0.76	0.20	34,36,37,40	0
4	EDO	B	604	4/4	0.82	0.13	15,17,18,21	0
4	EDO	B	608	4/4	0.85	0.18	41,42,42,44	0
3	PO4	B	605	5/5	0.89	0.12	58,61,62,64	0
4	EDO	B	607	4/4	0.89	0.17	37,40,42,44	0
4	EDO	A	607	4/4	0.90	0.19	30,33,34,36	0
4	EDO	A	609	4/4	0.91	0.30	18,24,25,30	0
3	PO4	A	603	5/5	0.91	0.11	17,18,23,24	0
4	EDO	A	604	4/4	0.93	0.09	17,17,18,23	0
3	PO4	B	603	5/5	0.93	0.11	7,15,16,18	0
3	PO4	B	602	5/5	0.93	0.09	16,16,19,19	0
3	PO4	A	605	5/5	0.94	0.14	58,58,61,62	0
4	EDO	A	606	4/4	0.94	0.10	14,22,25,27	0
3	PO4	A	602	5/5	0.96	0.07	7,11,14,17	0
2	1QR	B	601	28/28	0.96	0.07	7,10,18,21	0
4	EDO	B	609	4/4	0.96	0.10	17,24,26,32	0
2	1QR	A	601	28/28	0.97	0.10	7,10,21,23	0
4	EDO	B	606	4/4	0.98	0.09	8,8,13,16	0

6.5 Other polymers [i](#)

There are no such residues in this entry.