



Full wwPDB X-ray Structure Validation Report ⓘ

Oct 16, 2023 – 10:50 PM JST

PDB ID : 8KHU
Title : Hepatitis B virus core protein Y132A mutant in complex with THPP derivatives 48
Authors : Zhou, Z.; Xu, Z.H.
Deposited on : 2023-08-22
Resolution : 2.00 Å(reported)

This is a Full wwPDB X-ray Structure Validation Report for a publicly released PDB entry.

We welcome your comments at validation@mail.wwpdb.org

A user guide is available at

<https://www.wwpdb.org/validation/2017/XrayValidationReportHelp>

with specific help available everywhere you see the ⓘ symbol.

The types of validation reports are described at

<http://www.wwpdb.org/validation/2017/FAQs#types>.

The following versions of software and data (see [references ⓘ](#)) were used in the production of this report:

MolProbity : 4.02b-467
Mogul : 1.8.5 (274361), CSD as541be (2020)
Xtriage (Phenix) : 1.13
EDS : 2.36
buster-report : 1.1.7 (2018)
Percentile statistics : 20191225.v01 (using entries in the PDB archive December 25th 2019)
Refmac : 5.8.0158
CCP4 : 7.0.044 (Gargrove)
Ideal geometry (proteins) : Engh & Huber (2001)
Ideal geometry (DNA, RNA) : Parkinson et al. (1996)
Validation Pipeline (wwPDB-VP) : 2.36

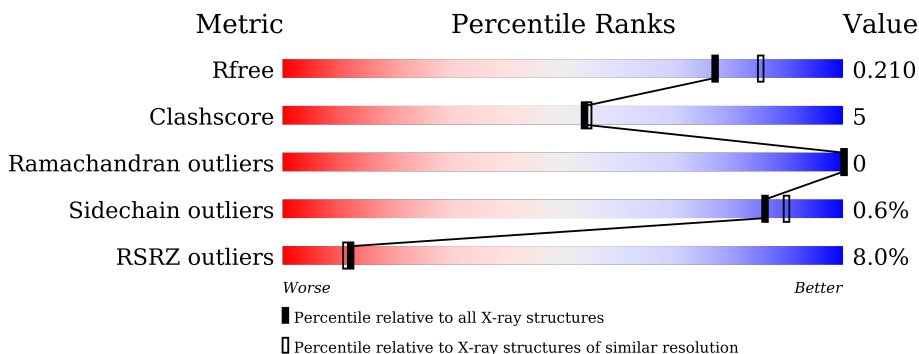
1 Overall quality at a glance

The following experimental techniques were used to determine the structure:

X-RAY DIFFRACTION

The reported resolution of this entry is 2.00 Å.

Percentile scores (ranging between 0-100) for global validation metrics of the entry are shown in the following graphic. The table shows the number of entries on which the scores are based.



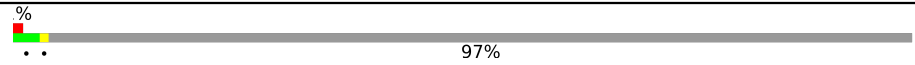
Metric	Whole archive (#Entries)	Similar resolution (#Entries, resolution range(Å))
R_{free}	130704	8085 (2.00-2.00)
Clashscore	141614	9178 (2.00-2.00)
Ramachandran outliers	138981	9054 (2.00-2.00)
Sidechain outliers	138945	9053 (2.00-2.00)
RSRZ outliers	127900	7900 (2.00-2.00)

The table below summarises the geometric issues observed across the polymeric chains and their fit to the electron density. The red, orange, yellow and green segments of the lower bar indicate the fraction of residues that contain outliers for ≥ 3 , 2, 1 and 0 types of geometric quality criteria respectively. A grey segment represents the fraction of residues that are not modelled. The numeric value for each fraction is indicated below the corresponding segment, with a dot representing fractions $\leq 5\%$. The upper red bar (where present) indicates the fraction of residues that have poor fit to the electron density. The numeric value is given above the bar.

Mol	Chain	Length	Quality of chain
1	A	155	
1	B	155	
1	C	155	
1	D	155	
1	E	155	
1	F	155	

Continued on next page...

Continued from previous page...

Mol	Chain	Length	Quality of chain
1	G	155	 % 97%

The following table lists non-polymeric compounds, carbohydrate monomers and non-standard residues in protein, DNA, RNA chains that are outliers for geometric or electron-density-fit criteria:

Mol	Type	Chain	Res	Chirality	Geometry	Clashes	Electron density
4	GOL	F	202	-	X	-	-

2 Entry composition

There are 5 unique types of molecules in this entry. The entry contains 7565 atoms, of which 0 are hydrogens and 0 are deuteriums.

In the tables below, the ZeroOcc column contains the number of atoms modelled with zero occupancy, the AltConf column contains the number of residues with at least one atom in alternate conformation and the Trace column contains the number of residues modelled with at most 2 atoms.

- Molecule 1 is a protein called Capsid protein.

Mol	Chain	Residues	Atoms					ZeroOcc	AltConf	Trace
			Total	C	N	O	S			
1	A	141	1124	728	186	205	5	0	1	0
1	B	148	1192	774	196	217	5	0	2	0
1	C	141	1124	728	186	205	5	0	1	0
1	D	155	1235	801	203	226	5	0	1	0
1	E	142	1136	735	188	208	5	0	2	0
1	F	150	1197	777	196	219	5	0	0	0
1	G	5	48	33	7	8		0	0	0

There are 49 discrepancies between the modelled and reference sequences:

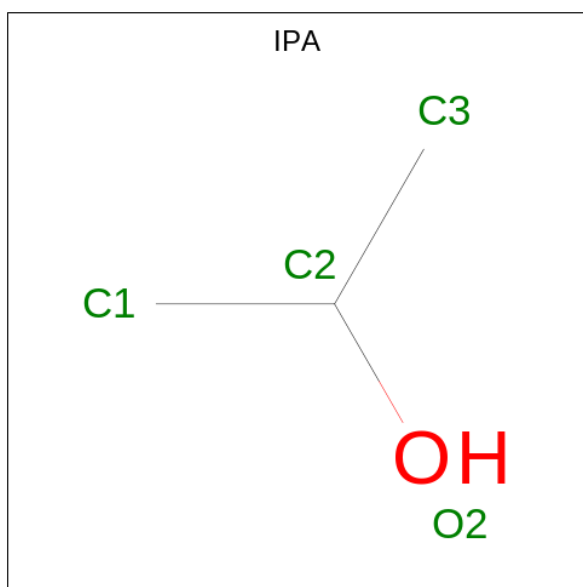
Chain	Residue	Modelled	Actual	Comment	Reference
A	132	ALA	TYR	engineered mutation	UNP P03147
A	150	GLU	-	expression tag	UNP P03147
A	151	ASN	-	expression tag	UNP P03147
A	152	LEU	-	expression tag	UNP P03147
A	153	TYR	-	expression tag	UNP P03147
A	154	PHE	-	expression tag	UNP P03147
A	155	GLN	-	expression tag	UNP P03147
B	132	ALA	TYR	engineered mutation	UNP P03147
B	150	GLU	-	expression tag	UNP P03147
B	151	ASN	-	expression tag	UNP P03147
B	152	LEU	-	expression tag	UNP P03147
B	153	TYR	-	expression tag	UNP P03147
B	154	PHE	-	expression tag	UNP P03147
B	155	GLN	-	expression tag	UNP P03147
C	132	ALA	TYR	engineered mutation	UNP P03147

Continued on next page...

Continued from previous page...

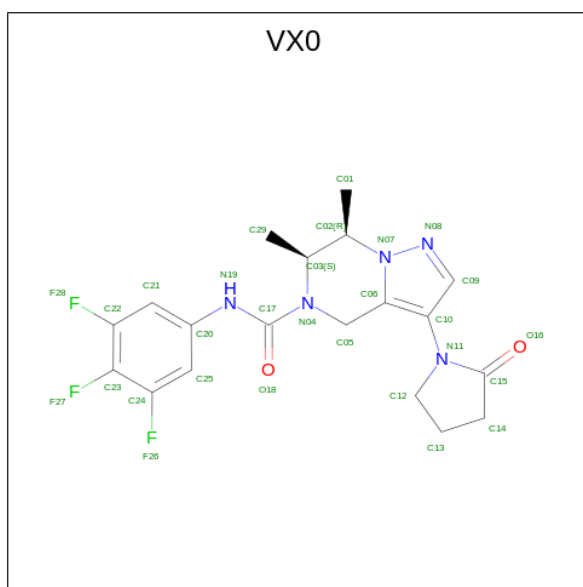
Chain	Residue	Modelled	Actual	Comment	Reference
C	150	GLU	-	expression tag	UNP P03147
C	151	ASN	-	expression tag	UNP P03147
C	152	LEU	-	expression tag	UNP P03147
C	153	TYR	-	expression tag	UNP P03147
C	154	PHE	-	expression tag	UNP P03147
C	155	GLN	-	expression tag	UNP P03147
D	132	ALA	TYR	engineered mutation	UNP P03147
D	150	GLU	-	expression tag	UNP P03147
D	151	ASN	-	expression tag	UNP P03147
D	152	LEU	-	expression tag	UNP P03147
D	153	TYR	-	expression tag	UNP P03147
D	154	PHE	-	expression tag	UNP P03147
D	155	GLN	-	expression tag	UNP P03147
E	132	ALA	TYR	engineered mutation	UNP P03147
E	150	GLU	-	expression tag	UNP P03147
E	151	ASN	-	expression tag	UNP P03147
E	152	LEU	-	expression tag	UNP P03147
E	153	TYR	-	expression tag	UNP P03147
E	154	PHE	-	expression tag	UNP P03147
E	155	GLN	-	expression tag	UNP P03147
F	132	ALA	TYR	engineered mutation	UNP P03147
F	150	GLU	-	expression tag	UNP P03147
F	151	ASN	-	expression tag	UNP P03147
F	152	LEU	-	expression tag	UNP P03147
F	153	TYR	-	expression tag	UNP P03147
F	154	PHE	-	expression tag	UNP P03147
F	155	GLN	-	expression tag	UNP P03147
G	132	ALA	TYR	engineered mutation	UNP P03147
G	150	GLU	-	expression tag	UNP P03147
G	151	ASN	-	expression tag	UNP P03147
G	152	LEU	-	expression tag	UNP P03147
G	153	TYR	-	expression tag	UNP P03147
G	154	PHE	-	expression tag	UNP P03147
G	155	GLN	-	expression tag	UNP P03147

- Molecule 2 is ISOPROPYL ALCOHOL (three-letter code: IPA) (formula: C₃H₈O).



Mol	Chain	Residues	Atoms	ZeroOcc	AltConf
2	A	1	Total C O 4 3 1	0	0
2	A	1	Total C O 4 3 1	0	0
2	B	1	Total C O 4 3 1	0	0
2	C	1	Total C O 4 3 1	0	0
2	D	1	Total C O 4 3 1	0	0
2	E	1	Total C O 4 3 1	0	0
2	E	1	Total C O 4 3 1	0	0

- Molecule 3 is (6 {S},7 {R})-6,7-dimethyl-3-(2-oxidanylidene pyrrolidin-1-yl)- {N}-[3,4,5-tris(fluoranyl)phenyl]-6,7-dihydro-4 {H}-pyrazolo[1,5-a]pyrazine-5-carboxamide (three-letter code: VX0) (formula: C₁₉H₂₀F₃N₅O₂) (labeled as "Ligand of Interest" by depositor).



Mol	Chain	Residues	Atoms					ZeroOcc	AltConf	
			Total	C	F	N	O			
3	A	1	Total	29	19	3	5	2	0	0
3	B	1	Total	29	19	3	5	2	0	0
3	C	1	Total	29	19	3	5	2	0	0
3	D	1	Total	29	19	3	5	2	0	0
3	E	1	Total	29	19	3	5	2	0	0
3	F	1	Total	29	19	3	5	2	0	0

- Molecule 4 is GLYCEROL (three-letter code: GOL) (formula: C₃H₈O₃).



Mol	Chain	Residues	Atoms		ZeroOcc	AltConf
4	F	1	Total	C O	0	0
			6	3 3		

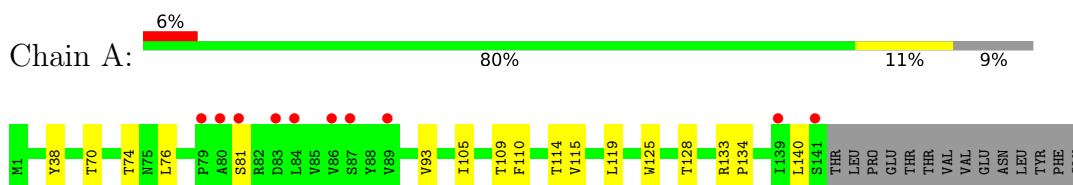
- Molecule 5 is water.

Mol	Chain	Residues	Atoms		ZeroOcc	AltConf
5	A	37	Total	O	0	0
			37	37		
5	B	59	Total	O	0	0
			59	59		
5	C	65	Total	O	0	0
			65	65		
5	D	57	Total	O	0	0
			57	57		
5	E	41	Total	O	0	0
			41	41		
5	F	41	Total	O	0	0
			41	41		
5	G	1	Total	O	0	0
			1	1		

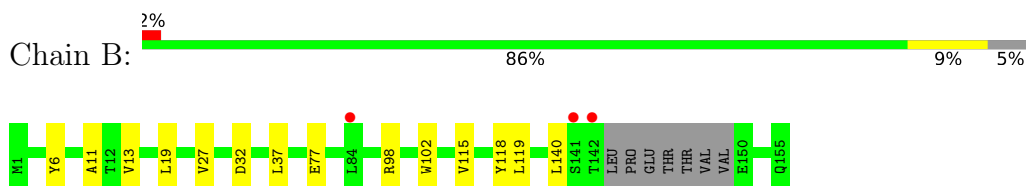
3 Residue-property plots [i](#)

These plots are drawn for all protein, RNA, DNA and oligosaccharide chains in the entry. The first graphic for a chain summarises the proportions of the various outlier classes displayed in the second graphic. The second graphic shows the sequence view annotated by issues in geometry and electron density. Residues are color-coded according to the number of geometric quality criteria for which they contain at least one outlier: green = 0, yellow = 1, orange = 2 and red = 3 or more. A red dot above a residue indicates a poor fit to the electron density ($RSRZ > 2$). Stretches of 2 or more consecutive residues without any outlier are shown as a green connector. Residues present in the sample, but not in the model, are shown in grey.

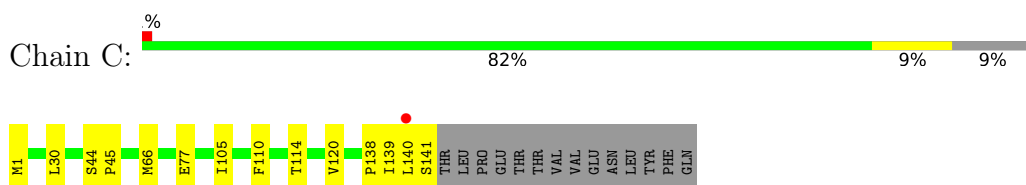
- Molecule 1: Capsid protein



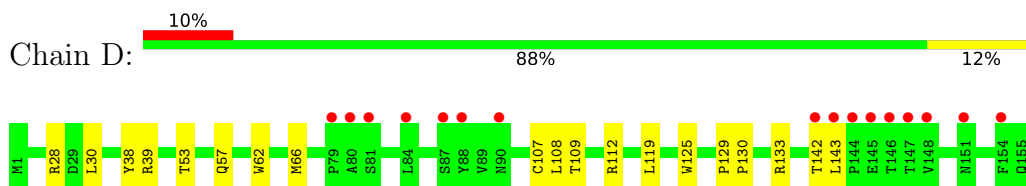
- Molecule 1: Capsid protein



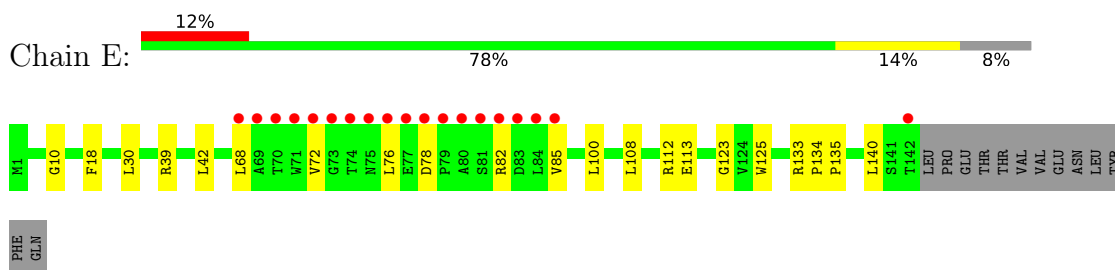
- Molecule 1: Capsid protein



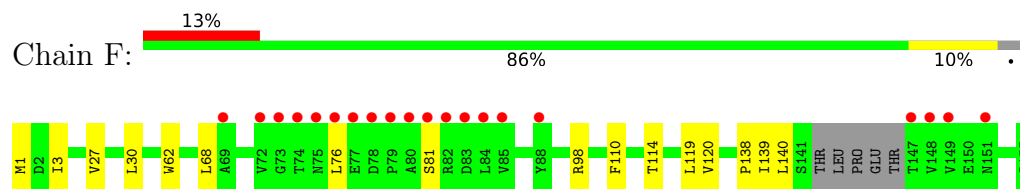
- Molecule 1: Capsid protein



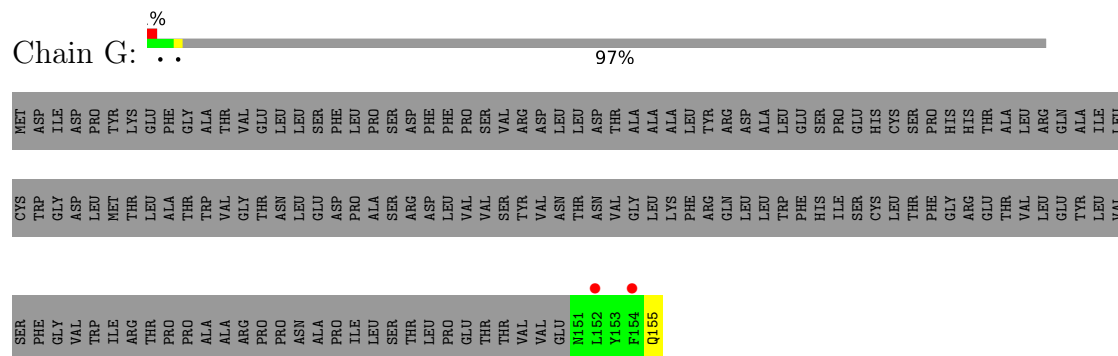
- Molecule 1: Capsid protein



• Molecule 1: Capsid protein



• Molecule 1: Capsid protein



4 Data and refinement statistics

Property	Value	Source
Space group	P 1	Depositor
Cell constants a, b, c, α , β , γ	66.21Å 65.98Å 86.41Å 68.62° 68.42° 83.33°	Depositor
Resolution (Å)	43.04 – 2.00 43.04 – 2.00	Depositor EDS
% Data completeness (in resolution range)	95.1 (43.04-2.00) 95.1 (43.04-2.00)	Depositor EDS
R_{merge}	(Not available)	Depositor
R_{sym}	(Not available)	Depositor
$\langle I/\sigma(I) \rangle$ ¹	1.88 (at 2.00Å)	Xtrriage
Refinement program	PHENIX 1.20.1_4487	Depositor
R, R_{free}	0.179 , 0.213 0.178 , 0.210	Depositor DCC
R_{free} test set	2016 reflections (2.47%)	wwPDB-VP
Wilson B-factor (Å ²)	35.1	Xtrriage
Anisotropy	0.389	Xtrriage
Bulk solvent k_{sol} (e/Å ³), B_{sol} (Å ²)	0.34 , 47.1	EDS
L-test for twinning ²	$\langle L \rangle = 0.50$, $\langle L^2 \rangle = 0.33$	Xtrriage
Estimated twinning fraction	0.020 for -k,-h,-l	Xtrriage
F_o, F_c correlation	0.97	EDS
Total number of atoms	7565	wwPDB-VP
Average B, all atoms (Å ²)	51.0	wwPDB-VP

Xtrriage's analysis on translational NCS is as follows: *The largest off-origin peak in the Patterson function is 6.60% of the height of the origin peak. No significant pseudotranslation is detected.*

¹Intensities estimated from amplitudes.

²Theoretical values of $\langle |L| \rangle$, $\langle L^2 \rangle$ for acentric reflections are 0.5, 0.333 respectively for untwinned datasets, and 0.375, 0.2 for perfectly twinned datasets.

5 Model quality [i](#)

5.1 Standard geometry [i](#)

Bond lengths and bond angles in the following residue types are not validated in this section: GOL, VX0, IPA

The Z score for a bond length (or angle) is the number of standard deviations the observed value is removed from the expected value. A bond length (or angle) with $|Z| > 5$ is considered an outlier worth inspection. RMSZ is the root-mean-square of all Z scores of the bond lengths (or angles).

Mol	Chain	Bond lengths		Bond angles	
		RMSZ	# Z >5	RMSZ	# Z >5
1	A	0.76	0/1158	0.78	0/1587
1	B	0.81	1/1227 (0.1%)	0.84	0/1680
1	C	0.92	1/1158 (0.1%)	0.84	0/1587
1	D	0.84	1/1272 (0.1%)	0.82	0/1745
1	E	0.73	0/1170	0.77	0/1604
1	F	0.75	1/1232 (0.1%)	0.73	0/1686
1	G	0.47	0/49	0.53	0/65
All	All	0.80	4/7266 (0.1%)	0.80	0/9954

All (4) bond length outliers are listed below:

Mol	Chain	Res	Type	Atoms	Z	Observed(Å)	Ideal(Å)
1	D	107	CYS	CB-SG	-6.86	1.70	1.82
1	F	120	VAL	CB-CG1	-6.83	1.38	1.52
1	B	13	VAL	CB-CG1	5.58	1.64	1.52
1	C	105	ILE	CB-CG2	5.38	1.69	1.52

There are no bond angle outliers.

There are no chirality outliers.

There are no planarity outliers.

5.2 Too-close contacts [i](#)

In the following table, the Non-H and H(model) columns list the number of non-hydrogen atoms and hydrogen atoms in the chain respectively. The H(added) column lists the number of hydrogen atoms added and optimized by MolProbity. The Clashes column lists the number of clashes within the asymmetric unit, whereas Symm-Clashes lists symmetry-related clashes.

Mol	Chain	Non-H	H(model)	H(added)	Clashes	Symm-Clashes
1	A	1124	0	1102	14	0
1	B	1192	0	1163	13	0
1	C	1124	0	1102	11	0
1	D	1235	0	1207	14	0
1	E	1136	0	1110	16	0
1	F	1197	0	1171	14	0
1	G	48	0	42	0	0
2	A	8	0	16	0	0
2	B	4	0	8	0	0
2	C	4	0	8	0	0
2	D	4	0	8	0	0
2	E	8	0	16	1	0
3	A	29	0	0	0	0
3	B	29	0	0	0	0
3	C	29	0	0	1	0
3	D	29	0	0	1	0
3	E	29	0	0	2	0
3	F	29	0	0	1	0
4	F	6	0	8	0	0
5	A	37	0	0	0	0
5	B	59	0	0	2	0
5	C	65	0	0	0	0
5	D	57	0	0	2	0
5	E	41	0	0	0	0
5	F	41	0	0	2	0
5	G	1	0	0	0	0
All	All	7565	0	6961	75	0

The all-atom clashscore is defined as the number of clashes found per 1000 atoms (including hydrogen atoms). The all-atom clashscore for this structure is 5.

All (75) close contacts within the same asymmetric unit are listed below, sorted by their clash magnitude.

Atom-1	Atom-2	Interatomic distance (Å)	Clash overlap (Å)
1:B:77:GLU:O	5:B:301:HOH:O	1.91	0.86
1:E:39[B]:ARG:HG3	1:F:1:MET:HG2	1.72	0.71
1:B:32:ASP:OD2	5:B:302:HOH:O	2.10	0.68
1:B:118:TYR:HB2	1:B:140:LEU:HD21	1.75	0.67
1:A:114:THR:HG22	1:A:140:LEU:HD11	1.77	0.67
1:C:1:MET:HG2	1:D:39:ARG:HG3	1.77	0.67
1:D:39:ARG:NH1	5:D:301:HOH:O	2.28	0.65
1:E:10:GLY:HA3	1:E:112:ARG:HE	1.68	0.58

Continued on next page...

Continued from previous page...

Atom-1	Atom-2	Interatomic distance (Å)	Clash overlap (Å)
1:B:19:LEU:HD11	1:B:119[B]:LEU:CD2	2.34	0.58
1:A:38:TYR:OH	1:A:109:THR:HG22	2.04	0.58
1:A:134:PRO:HG3	1:F:139:ILE:HD12	1.86	0.57
1:A:110:PHE:CD2	1:A:140:LEU:HD23	2.40	0.56
1:E:39[A]:ARG:HG3	1:F:1:MET:HG2	1.88	0.56
1:D:28:ARG:HH22	1:D:66:MET:HG3	1.72	0.55
1:A:128:THR:O	1:A:133:ARG:HD3	2.08	0.54
1:A:114:THR:HG22	1:A:140:LEU:CD1	2.37	0.54
1:F:27:VAL:HG23	1:F:98:ARG:HG3	1.89	0.54
1:F:110:PHE:CD2	1:F:140:LEU:HD13	2.43	0.54
1:C:110:PHE:CD2	1:C:140:LEU:HD13	2.42	0.53
1:C:114:THR:HG22	1:C:140:LEU:CD2	2.39	0.53
1:A:119:LEU:HD23	1:A:119:LEU:C	2.29	0.52
1:D:28:ARG:HH12	1:D:62:TRP:HE1	1.59	0.51
1:B:102:TRP:HZ3	1:B:119[B]:LEU:HD21	1.77	0.50
1:D:28:ARG:NH1	1:D:62:TRP:HE1	2.10	0.49
1:A:125:TRP:O	1:A:133:ARG:HD2	2.11	0.49
1:E:68:LEU:HD23	1:F:68:LEU:HD23	1.94	0.49
1:B:115:VAL:O	1:B:119[B]:LEU:HG	2.13	0.49
1:F:138:PRO:O	1:F:139:ILE:HD13	2.13	0.49
1:B:19:LEU:HD11	1:B:119[B]:LEU:HD22	1.95	0.48
1:E:112:ARG:NH1	1:E:113:GLU:OE1	2.46	0.48
1:E:30:LEU:HD23	3:E:203:VX0:F27	2.03	0.48
1:B:27:VAL:HG23	1:B:98:ARG:HG3	1.95	0.48
1:C:138:PRO:O	1:C:139:ILE:HD13	2.14	0.47
1:A:140:LEU:HA	1:A:140:LEU:HD12	1.52	0.47
1:E:82:ARG:O	1:E:85:VAL:HG22	2.14	0.47
1:D:30:LEU:HD23	3:D:202:VX0:F27	2.05	0.47
1:C:30:LEU:HD23	3:C:202:VX0:F27	2.05	0.47
1:D:119:LEU:C	1:D:119:LEU:HD23	2.36	0.46
1:E:140:LEU:HD12	3:E:203:VX0:C01	2.46	0.46
1:D:143:LEU:HD12	1:D:143:LEU:H	1.80	0.46
1:F:76:LEU:HD13	1:F:81:SER:HB3	1.98	0.46
1:E:18:PHE:CE2	1:E:123:GLY:HA3	2.52	0.45
1:F:27:VAL:HG11	1:F:62:TRP:CE2	2.51	0.45
1:A:105:ILE:O	1:A:109:THR:HG23	2.16	0.45
1:E:78:ASP:OD1	1:E:78:ASP:N	2.49	0.45
1:E:134:PRO:HA	1:E:135:PRO:HD3	1.88	0.45
1:B:37:LEU:HD21	1:C:120:VAL:HG11	1.98	0.44
1:A:70:THR:O	1:A:74:THR:HG23	2.17	0.44
1:F:114:THR:HG22	1:F:140:LEU:CD2	2.47	0.44

Continued on next page...

Continued from previous page...

Atom-1	Atom-2	Interatomic distance (Å)	Clash overlap (Å)
1:B:102:TRP:CZ3	1:B:119[B]:LEU:HD21	2.52	0.44
1:F:110:PHE:HE2	5:F:332:HOH:O	2.00	0.44
1:A:119:LEU:HD23	1:A:119:LEU:O	2.17	0.44
1:B:6:TYR:HB3	1:B:11:ALA:HB3	1.99	0.43
1:C:66:MET:HA	1:C:66:MET:CE	2.48	0.43
1:D:108:LEU:HD23	1:D:108:LEU:HA	1.76	0.43
1:A:76:LEU:HD13	1:A:81:SER:HB3	2.01	0.43
1:A:115:VAL:HG22	1:A:140:LEU:HD21	2.00	0.43
1:D:129:PRO:HA	1:D:130:PRO:HD3	1.92	0.43
1:F:3:ILE:N	5:F:303:HOH:O	2.39	0.43
1:E:125:TRP:O	1:E:133:ARG:HD2	2.19	0.42
1:E:100:LEU:CD2	2:E:202:IPA:H32	2.49	0.42
1:D:38:TYR:OH	1:D:109:THR:OG1	2.33	0.42
1:F:30:LEU:HD23	3:F:201:VX0:F27	2.10	0.42
1:B:119[A]:LEU:C	1:B:119[A]:LEU:HD23	2.39	0.42
1:D:125:TRP:O	1:D:133:ARG:HD2	2.20	0.42
1:E:72:VAL:O	1:E:76:LEU:HD13	2.20	0.41
1:C:44:SER:HB2	1:C:45:PRO:HD2	2.01	0.41
1:C:114:THR:HG22	1:C:140:LEU:HD23	2.03	0.41
1:D:112:ARG:NH1	5:D:306:HOH:O	2.54	0.41
1:B:37:LEU:HD21	1:C:120:VAL:CG1	2.50	0.41
1:D:53:THR:O	1:D:57:GLN:HG2	2.21	0.41
1:E:108:LEU:HD23	1:E:108:LEU:HA	1.92	0.40
1:C:139:ILE:HD13	1:C:139:ILE:HA	1.90	0.40
1:E:42:LEU:HD23	1:E:42:LEU:HA	1.96	0.40
1:F:119:LEU:C	1:F:119:LEU:HD23	2.41	0.40

There are no symmetry-related clashes.

5.3 Torsion angles [\(i\)](#)

5.3.1 Protein backbone [\(i\)](#)

In the following table, the Percentiles column shows the percent Ramachandran outliers of the chain as a percentile score with respect to all X-ray entries followed by that with respect to entries of similar resolution.

The Analysed column shows the number of residues for which the backbone conformation was analysed, and the total number of residues.

Mol	Chain	Analysed	Favoured	Allowed	Outliers	Percentiles	
1	A	140/155 (90%)	137 (98%)	3 (2%)	0	100	100
1	B	146/155 (94%)	144 (99%)	2 (1%)	0	100	100
1	C	140/155 (90%)	137 (98%)	3 (2%)	0	100	100
1	D	154/155 (99%)	151 (98%)	3 (2%)	0	100	100
1	E	142/155 (92%)	140 (99%)	2 (1%)	0	100	100
1	F	146/155 (94%)	144 (99%)	2 (1%)	0	100	100
1	G	3/155 (2%)	3 (100%)	0	0	100	100
All	All	871/1085 (80%)	856 (98%)	15 (2%)	0	100	100

There are no Ramachandran outliers to report.

5.3.2 Protein sidechains [i](#)

In the following table, the Percentiles column shows the percent sidechain outliers of the chain as a percentile score with respect to all X-ray entries followed by that with respect to entries of similar resolution.

The Analysed column shows the number of residues for which the sidechain conformation was analysed, and the total number of residues.

Mol	Chain	Analysed	Rotameric	Outliers	Percentiles	
1	A	124/137 (90%)	123 (99%)	1 (1%)	81	86
1	B	131/137 (96%)	131 (100%)	0	100	100
1	C	124/137 (90%)	122 (98%)	2 (2%)	62	67
1	D	136/137 (99%)	135 (99%)	1 (1%)	84	88
1	E	125/137 (91%)	125 (100%)	0	100	100
1	F	132/137 (96%)	132 (100%)	0	100	100
1	G	5/137 (4%)	4 (80%)	1 (20%)	1	0
All	All	777/959 (81%)	772 (99%)	5 (1%)	86	90

All (5) residues with a non-rotameric sidechain are listed below:

Mol	Chain	Res	Type
1	A	93	VAL
1	C	77	GLU
1	C	141	SER
1	D	142	THR
1	G	155	GLN

Sometimes sidechains can be flipped to improve hydrogen bonding and reduce clashes. There are no such sidechains identified.

5.3.3 RNA [i](#)

There are no RNA molecules in this entry.

5.4 Non-standard residues in protein, DNA, RNA chains [i](#)

There are no non-standard protein/DNA/RNA residues in this entry.

5.5 Carbohydrates [i](#)

There are no monosaccharides in this entry.

5.6 Ligand geometry [i](#)

14 ligands are modelled in this entry.

In the following table, the Counts columns list the number of bonds (or angles) for which Mogul statistics could be retrieved, the number of bonds (or angles) that are observed in the model and the number of bonds (or angles) that are defined in the Chemical Component Dictionary. The Link column lists molecule types, if any, to which the group is linked. The Z score for a bond length (or angle) is the number of standard deviations the observed value is removed from the expected value. A bond length (or angle) with $|Z| > 2$ is considered an outlier worth inspection. RMSZ is the root-mean-square of all Z scores of the bond lengths (or angles).

Mol	Type	Chain	Res	Link	Bond lengths			Bond angles		
					Counts	RMSZ	# Z > 2	Counts	RMSZ	# Z > 2
2	IPA	D	201	-	3,3,3	0.76	0	3,3,3	0.36	0
4	GOL	F	202	-	5,5,5	1.81	2 (40%)	5,5,5	0.75	0
3	VX0	D	202	-	29,32,32	2.78	16 (55%)	33,48,48	1.96	12 (36%)
3	VX0	C	202	-	29,32,32	2.66	14 (48%)	33,48,48	1.88	10 (30%)
3	VX0	F	201	-	29,32,32	3.08	17 (58%)	33,48,48	2.21	13 (39%)
2	IPA	E	201	-	3,3,3	0.60	0	3,3,3	0.38	0
2	IPA	A	201	-	3,3,3	0.51	0	3,3,3	0.86	0
2	IPA	C	201	-	3,3,3	0.69	0	3,3,3	0.54	0
2	IPA	E	202	-	3,3,3	0.70	0	3,3,3	0.57	0
3	VX0	A	203	-	29,32,32	2.49	12 (41%)	33,48,48	2.26	14 (42%)
3	VX0	B	202	-	29,32,32	3.13	18 (62%)	33,48,48	1.91	11 (33%)
2	IPA	A	202	-	3,3,3	0.70	0	3,3,3	0.45	0
2	IPA	B	201	-	3,3,3	0.54	0	3,3,3	0.53	0

Mol	Type	Chain	Res	Link	Bond lengths			Bond angles		
					Counts	RMSZ	# Z > 2	Counts	RMSZ	# Z > 2
3	VX0	E	203	-	29,32,32	2.84	17 (58%)	33,48,48	2.09	11 (33%)

In the following table, the Chirals column lists the number of chiral outliers, the number of chiral centers analysed, the number of these observed in the model and the number defined in the Chemical Component Dictionary. Similar counts are reported in the Torsion and Rings columns. '-' means no outliers of that kind were identified.

Mol	Type	Chain	Res	Link	Chirals	Torsions	Rings
4	GOL	F	202	-	-	4/4/4/4	-
3	VX0	D	202	-	-	2/8/38/38	0/3/4/4
3	VX0	F	201	-	-	2/8/38/38	0/3/4/4
3	VX0	A	203	-	-	2/8/38/38	0/3/4/4
3	VX0	B	202	-	-	1/8/38/38	0/3/4/4
3	VX0	C	202	-	-	2/8/38/38	0/3/4/4
3	VX0	E	203	-	-	2/8/38/38	0/3/4/4

All (96) bond length outliers are listed below:

Mol	Chain	Res	Type	Atoms	Z	Observed(Å)	Ideal(Å)
3	F	201	VX0	C09-C10	7.94	1.46	1.38
3	B	202	VX0	C20-N19	-7.38	1.26	1.41
3	B	202	VX0	C03-N04	6.10	1.54	1.48
3	F	201	VX0	C15-N11	6.08	1.46	1.36
3	E	203	VX0	C09-C10	5.97	1.44	1.38
3	C	202	VX0	C09-C10	5.97	1.44	1.38
3	B	202	VX0	C09-C10	5.77	1.44	1.38
3	A	203	VX0	C09-C10	5.75	1.44	1.38
3	F	201	VX0	C24-C23	5.27	1.48	1.37
3	E	203	VX0	C20-N19	-4.93	1.31	1.41
3	D	202	VX0	C10-N11	4.83	1.50	1.44
3	D	202	VX0	C09-C10	4.68	1.43	1.38
3	C	202	VX0	C05-N04	4.67	1.53	1.46
3	B	202	VX0	C10-N11	-4.63	1.37	1.44
3	E	203	VX0	C13-C12	4.55	1.67	1.51
3	A	203	VX0	C24-C23	4.48	1.46	1.37
3	F	201	VX0	C20-N19	-4.39	1.32	1.41
3	B	202	VX0	C05-C06	4.36	1.60	1.51
3	D	202	VX0	C22-C23	4.36	1.46	1.37
3	D	202	VX0	C17-N04	4.31	1.52	1.37
3	A	203	VX0	C17-N04	4.14	1.51	1.37
3	B	202	VX0	C21-C20	4.07	1.46	1.39

Continued on next page...

Continued from previous page...

Mol	Chain	Res	Type	Atoms	Z	Observed(Å)	Ideal(Å)
3	E	203	VX0	C03-N04	4.05	1.52	1.48
3	D	202	VX0	O18-C17	4.05	1.30	1.23
3	F	201	VX0	C13-C12	4.04	1.65	1.51
3	A	203	VX0	C13-C12	4.00	1.65	1.51
3	E	203	VX0	C22-C23	3.85	1.45	1.37
3	D	202	VX0	C05-N04	3.79	1.51	1.46
3	A	203	VX0	C22-C23	3.77	1.45	1.37
3	D	202	VX0	C20-N19	-3.71	1.34	1.41
3	F	201	VX0	C17-N04	3.70	1.50	1.37
3	F	201	VX0	C22-C23	3.70	1.45	1.37
3	C	202	VX0	C13-C12	3.70	1.64	1.51
3	B	202	VX0	C13-C12	3.64	1.64	1.51
3	C	202	VX0	C20-N19	-3.59	1.34	1.41
3	D	202	VX0	C24-C23	3.58	1.44	1.37
3	E	203	VX0	C14-C15	3.57	1.61	1.51
3	B	202	VX0	O18-C17	3.55	1.29	1.23
3	F	201	VX0	C21-C20	3.50	1.45	1.39
3	C	202	VX0	C22-C23	3.46	1.44	1.37
3	D	202	VX0	C21-C22	3.43	1.43	1.37
3	C	202	VX0	C12-N11	-3.43	1.43	1.47
3	C	202	VX0	C21-C22	3.31	1.43	1.37
3	D	202	VX0	F26-C24	-3.30	1.27	1.35
3	F	201	VX0	C03-N04	3.25	1.51	1.48
3	E	203	VX0	O18-C17	3.24	1.29	1.23
3	C	202	VX0	O18-C17	3.24	1.29	1.23
3	E	203	VX0	C05-N04	3.23	1.51	1.46
3	E	203	VX0	C24-C23	3.22	1.44	1.37
3	D	202	VX0	C13-C12	3.17	1.62	1.51
3	E	203	VX0	C15-N11	3.12	1.41	1.36
3	C	202	VX0	C17-N04	3.09	1.47	1.37
3	B	202	VX0	C25-C24	3.07	1.42	1.37
3	E	203	VX0	F27-C23	-3.06	1.30	1.35
3	D	202	VX0	C05-C06	3.06	1.57	1.51
3	F	201	VX0	C14-C15	3.04	1.60	1.51
3	A	203	VX0	C05-C06	3.02	1.57	1.51
3	C	202	VX0	C21-C20	3.01	1.44	1.39
3	F	201	VX0	F26-C24	-2.99	1.27	1.35
3	E	203	VX0	C05-C06	2.82	1.57	1.51
3	A	203	VX0	C15-N11	2.75	1.41	1.36
3	C	202	VX0	C24-C23	2.75	1.43	1.37
3	F	201	VX0	C21-C22	2.74	1.42	1.37
3	B	202	VX0	C21-C22	2.74	1.42	1.37

Continued on next page...

Continued from previous page...

Mol	Chain	Res	Type	Atoms	Z	Observed(Å)	Ideal(Å)
3	C	202	VX0	F26-C24	-2.74	1.28	1.35
3	C	202	VX0	C14-C15	2.73	1.59	1.51
3	A	203	VX0	C03-C02	-2.70	1.49	1.53
3	E	203	VX0	C25-C20	-2.69	1.35	1.39
3	D	202	VX0	C14-C15	2.66	1.59	1.51
3	B	202	VX0	N08-N07	-2.61	1.32	1.36
3	A	203	VX0	C21-C22	2.55	1.42	1.37
3	D	202	VX0	F28-C22	-2.53	1.29	1.35
3	A	203	VX0	C14-C15	2.53	1.58	1.51
3	A	203	VX0	F26-C24	-2.48	1.29	1.35
4	F	202	GOL	C1-C2	2.47	1.61	1.51
3	B	202	VX0	C24-C23	2.37	1.42	1.37
4	F	202	GOL	C3-C2	2.32	1.61	1.51
3	B	202	VX0	C05-N04	2.31	1.50	1.46
3	E	203	VX0	F26-C24	-2.27	1.29	1.35
3	E	203	VX0	C21-C20	2.27	1.43	1.39
3	B	202	VX0	C15-N11	2.26	1.40	1.36
3	E	203	VX0	F28-C22	-2.24	1.29	1.35
3	F	201	VX0	F27-C23	-2.21	1.31	1.35
3	D	202	VX0	C15-N11	2.21	1.40	1.36
3	D	202	VX0	C17-N19	2.20	1.41	1.37
3	B	202	VX0	F28-C22	-2.20	1.29	1.35
3	B	202	VX0	C03-C02	-2.19	1.50	1.53
3	F	201	VX0	C06-N07	2.19	1.45	1.36
3	E	203	VX0	C25-C24	2.17	1.41	1.37
3	C	202	VX0	F28-C22	-2.14	1.30	1.35
3	F	201	VX0	C12-N11	-2.08	1.44	1.47
3	F	201	VX0	C05-C06	2.08	1.55	1.51
3	B	202	VX0	F27-C23	-2.08	1.31	1.35
3	A	203	VX0	C03-N04	2.04	1.50	1.48
3	F	201	VX0	C09-N08	2.01	1.38	1.33
3	B	202	VX0	F26-C24	-2.00	1.30	1.35

All (71) bond angle outliers are listed below:

Mol	Chain	Res	Type	Atoms	Z	Observed(°)	Ideal(°)
3	C	202	VX0	O16-C15-N11	-5.47	121.90	125.40
3	E	203	VX0	O16-C15-N11	-4.76	122.35	125.40
3	B	202	VX0	F28-C22-C23	-4.76	111.60	118.30
3	A	203	VX0	C14-C15-N11	4.66	111.35	108.23
3	B	202	VX0	F28-C22-C21	4.30	127.17	118.61
3	E	203	VX0	C20-C25-C24	4.19	122.19	118.76

Continued on next page...

Continued from previous page...

Mol	Chain	Res	Type	Atoms	Z	Observed(°)	Ideal(°)
3	F	201	VX0	F28-C22-C21	4.04	126.65	118.61
3	F	201	VX0	C13-C12-N11	4.03	107.75	103.42
3	A	203	VX0	O16-C15-N11	-3.99	122.85	125.40
3	F	201	VX0	C12-N11-C15	-3.91	109.30	112.95
3	F	201	VX0	C14-C15-N11	3.90	110.85	108.23
3	D	202	VX0	C13-C12-N11	3.79	107.50	103.42
3	B	202	VX0	C14-C15-N11	3.79	110.77	108.23
3	D	202	VX0	C20-C25-C24	3.76	121.84	118.76
3	A	203	VX0	C20-C25-C24	3.76	121.83	118.76
3	D	202	VX0	C24-C23-C22	-3.75	114.98	118.69
3	C	202	VX0	C14-C15-N11	3.75	110.74	108.23
3	A	203	VX0	C20-N19-C17	3.71	133.57	126.12
3	E	203	VX0	C14-C15-N11	3.68	110.70	108.23
3	F	201	VX0	O16-C15-N11	-3.56	123.12	125.40
3	E	203	VX0	C13-C12-N11	3.55	107.24	103.42
3	A	203	VX0	C13-C12-N11	3.42	107.10	103.42
3	A	203	VX0	C12-N11-C15	-3.40	109.78	112.95
3	F	201	VX0	C09-C10-C06	-3.32	102.88	107.10
3	A	203	VX0	O18-C17-N19	-3.27	116.37	123.61
3	A	203	VX0	C20-C21-C22	3.23	121.40	118.76
3	A	203	VX0	C05-C06-C10	3.23	135.84	128.37
3	D	202	VX0	O16-C15-N11	-3.20	123.36	125.40
3	E	203	VX0	F28-C22-C21	3.19	124.96	118.61
3	F	201	VX0	F28-C22-C23	-3.19	113.81	118.30
3	F	201	VX0	O18-C17-N19	-3.11	116.72	123.61
3	D	202	VX0	C05-C06-C10	3.05	135.42	128.37
3	B	202	VX0	F26-C24-C23	-2.98	114.11	118.30
3	E	203	VX0	C05-C06-C10	2.90	135.08	128.37
3	F	201	VX0	C20-N19-C17	2.85	131.85	126.12
3	C	202	VX0	C09-C10-C06	-2.85	103.48	107.10
3	E	203	VX0	O18-C17-N19	-2.83	117.35	123.61
3	C	202	VX0	C13-C12-N11	2.79	106.42	103.42
3	F	201	VX0	C20-C25-C24	2.74	121.00	118.76
3	C	202	VX0	F28-C22-C21	2.74	124.05	118.61
3	A	203	VX0	C09-C10-C06	-2.73	103.63	107.10
3	F	201	VX0	F27-C23-C24	2.73	124.80	119.11
3	A	203	VX0	F27-C23-C24	2.72	124.78	119.11
3	E	203	VX0	C09-C10-C06	-2.67	103.71	107.10
3	A	203	VX0	C24-C23-C22	-2.65	116.06	118.69
3	B	202	VX0	C13-C12-N11	2.62	106.23	103.42
3	C	202	VX0	C05-C06-C10	2.60	134.39	128.37
3	D	202	VX0	C09-C10-C06	-2.59	103.82	107.10

Continued on next page...

Continued from previous page...

Mol	Chain	Res	Type	Atoms	Z	Observed(°)	Ideal(°)
3	D	202	VX0	C14-C15-N11	2.57	109.95	108.23
3	B	202	VX0	F26-C24-C25	2.56	123.71	118.61
3	B	202	VX0	C09-C10-C06	-2.49	103.94	107.10
3	B	202	VX0	O16-C15-N11	-2.48	123.81	125.40
3	D	202	VX0	C20-N19-C17	2.47	131.09	126.12
3	B	202	VX0	C05-C06-C10	2.47	134.09	128.37
3	D	202	VX0	C12-N11-C15	-2.42	110.69	112.95
3	D	202	VX0	O18-C17-N19	-2.42	118.26	123.61
3	E	203	VX0	C12-N11-C15	-2.40	110.71	112.95
3	E	203	VX0	F28-C22-C23	-2.39	114.94	118.30
3	C	202	VX0	O18-C17-N19	-2.38	118.35	123.61
3	F	201	VX0	C05-C06-C10	2.33	133.77	128.37
3	D	202	VX0	F28-C22-C23	-2.32	115.04	118.30
3	B	202	VX0	C06-C05-N04	-2.29	107.53	112.21
3	E	203	VX0	F26-C24-C25	2.27	123.12	118.61
3	F	201	VX0	C20-C21-C22	2.21	120.56	118.76
3	A	203	VX0	F28-C22-C21	2.19	122.96	118.61
3	C	202	VX0	F26-C24-C23	-2.09	115.36	118.30
3	D	202	VX0	F28-C22-C21	2.08	122.76	118.61
3	C	202	VX0	C06-N07-N08	-2.06	110.25	111.85
3	C	202	VX0	F28-C22-C23	-2.03	115.44	118.30
3	A	203	VX0	C06-C10-N11	2.02	130.31	126.41
3	B	202	VX0	C12-N11-C15	-2.01	111.08	112.95

There are no chirality outliers.

All (15) torsion outliers are listed below:

Mol	Chain	Res	Type	Atoms
4	F	202	GOL	O1-C1-C2-C3
4	F	202	GOL	C1-C2-C3-O3
4	F	202	GOL	O1-C1-C2-O2
4	F	202	GOL	O2-C2-C3-O3
3	C	202	VX0	C21-C20-N19-C17
3	F	201	VX0	C25-C20-N19-C17
3	A	203	VX0	C21-C20-N19-C17
3	A	203	VX0	C25-C20-N19-C17
3	E	203	VX0	C25-C20-N19-C17
3	C	202	VX0	C25-C20-N19-C17
3	D	202	VX0	C25-C20-N19-C17
3	D	202	VX0	C21-C20-N19-C17
3	F	201	VX0	C21-C20-N19-C17
3	E	203	VX0	C21-C20-N19-C17

Continued on next page...

Continued from previous page...

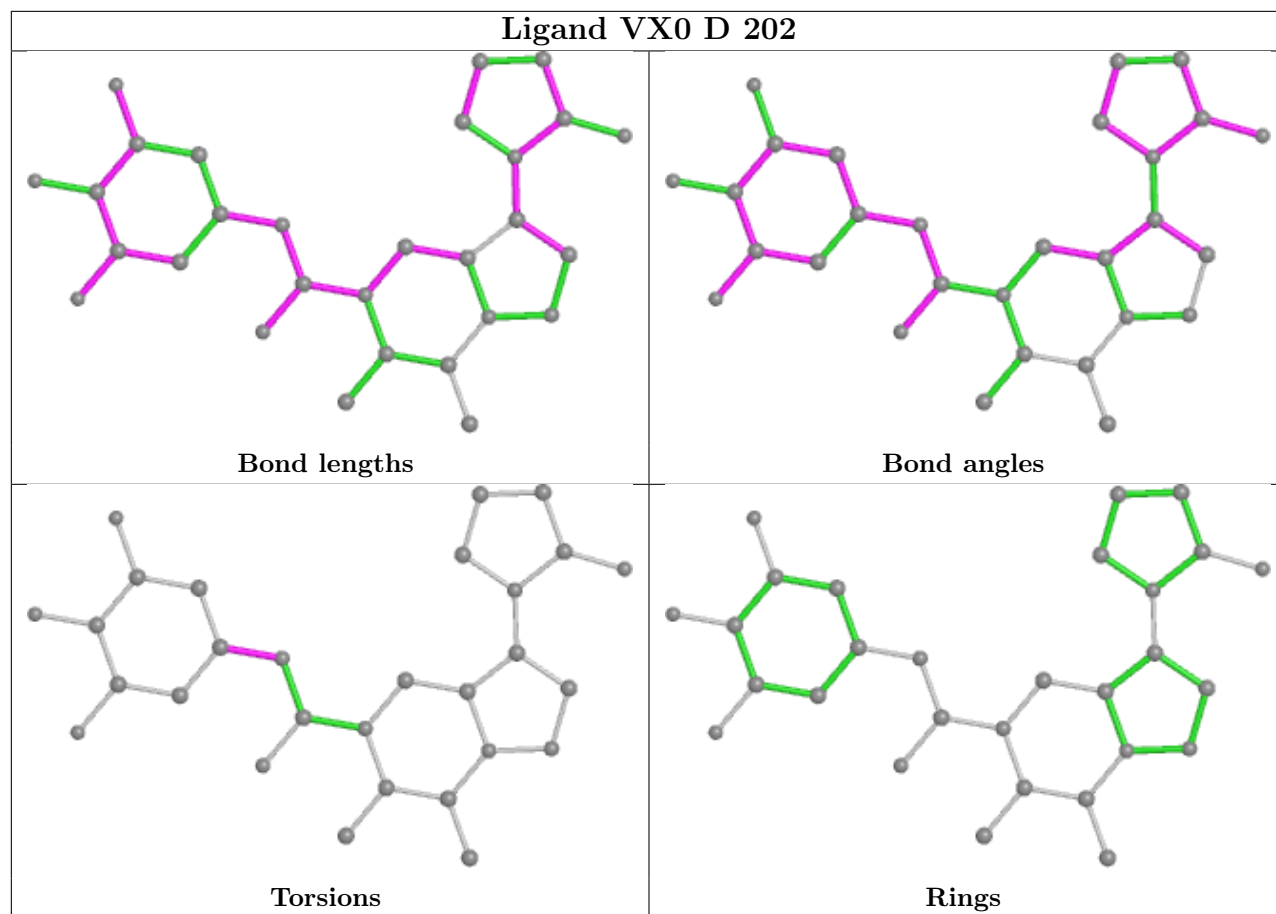
Mol	Chain	Res	Type	Atoms
3	B	202	VX0	C21-C20-N19-C17

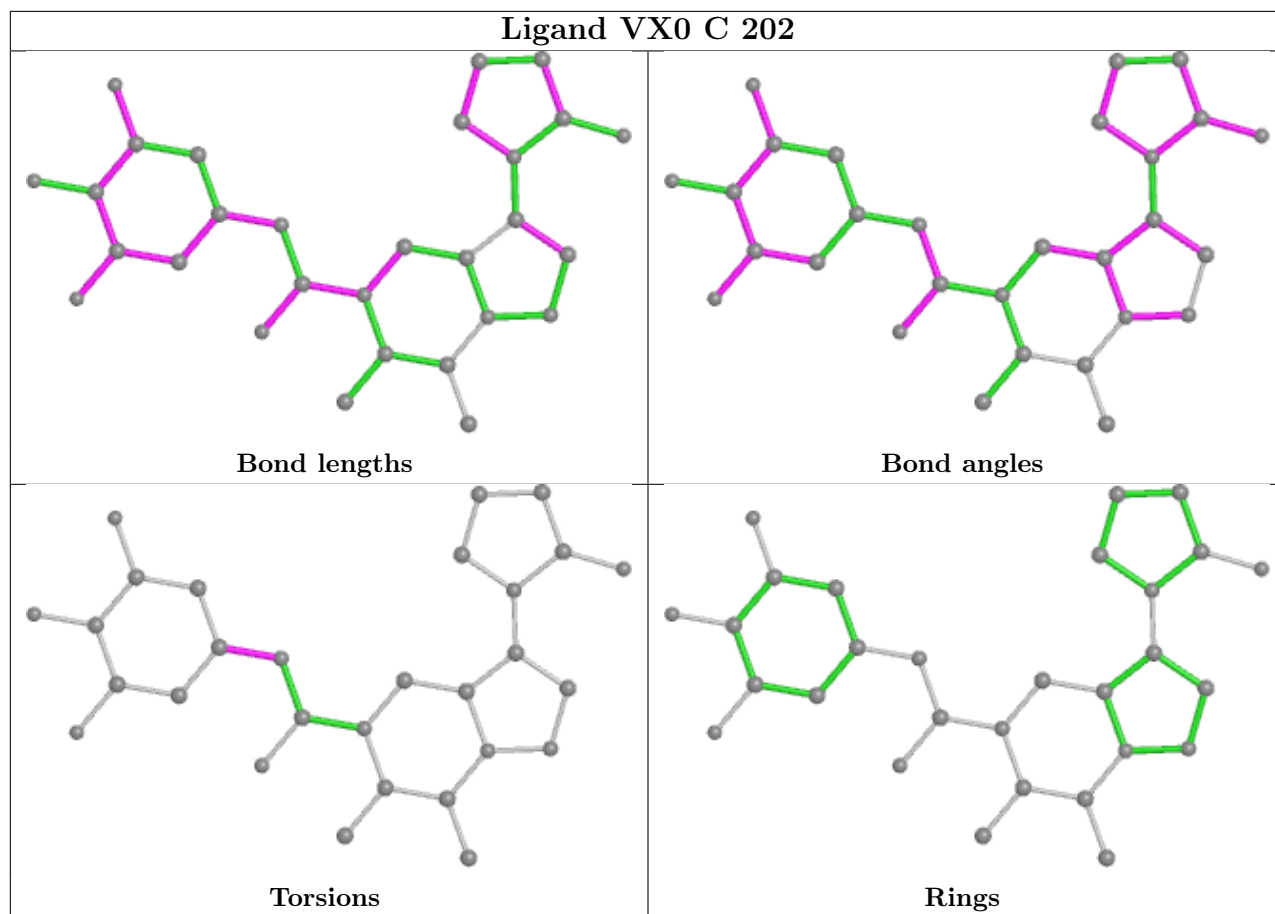
There are no ring outliers.

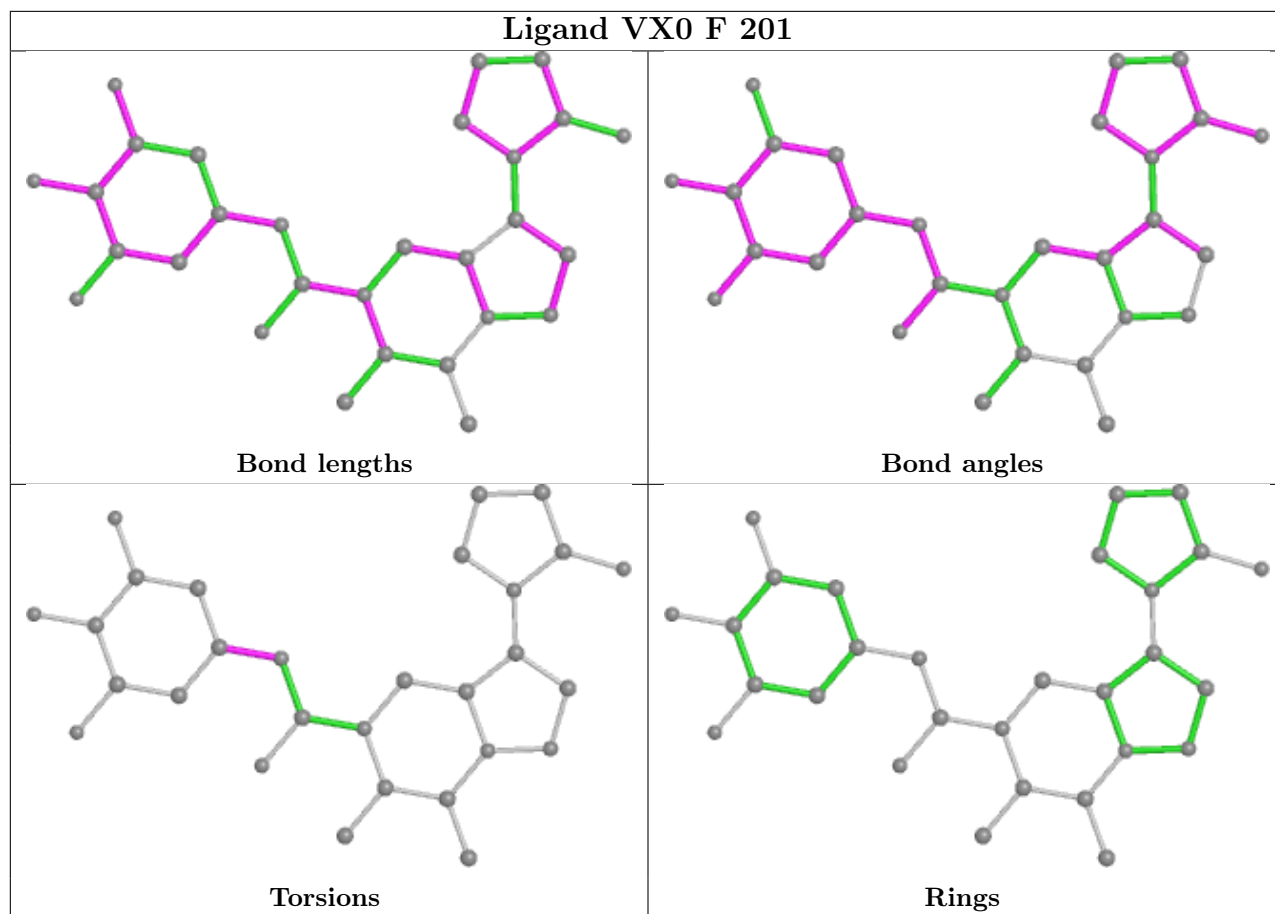
5 monomers are involved in 6 short contacts:

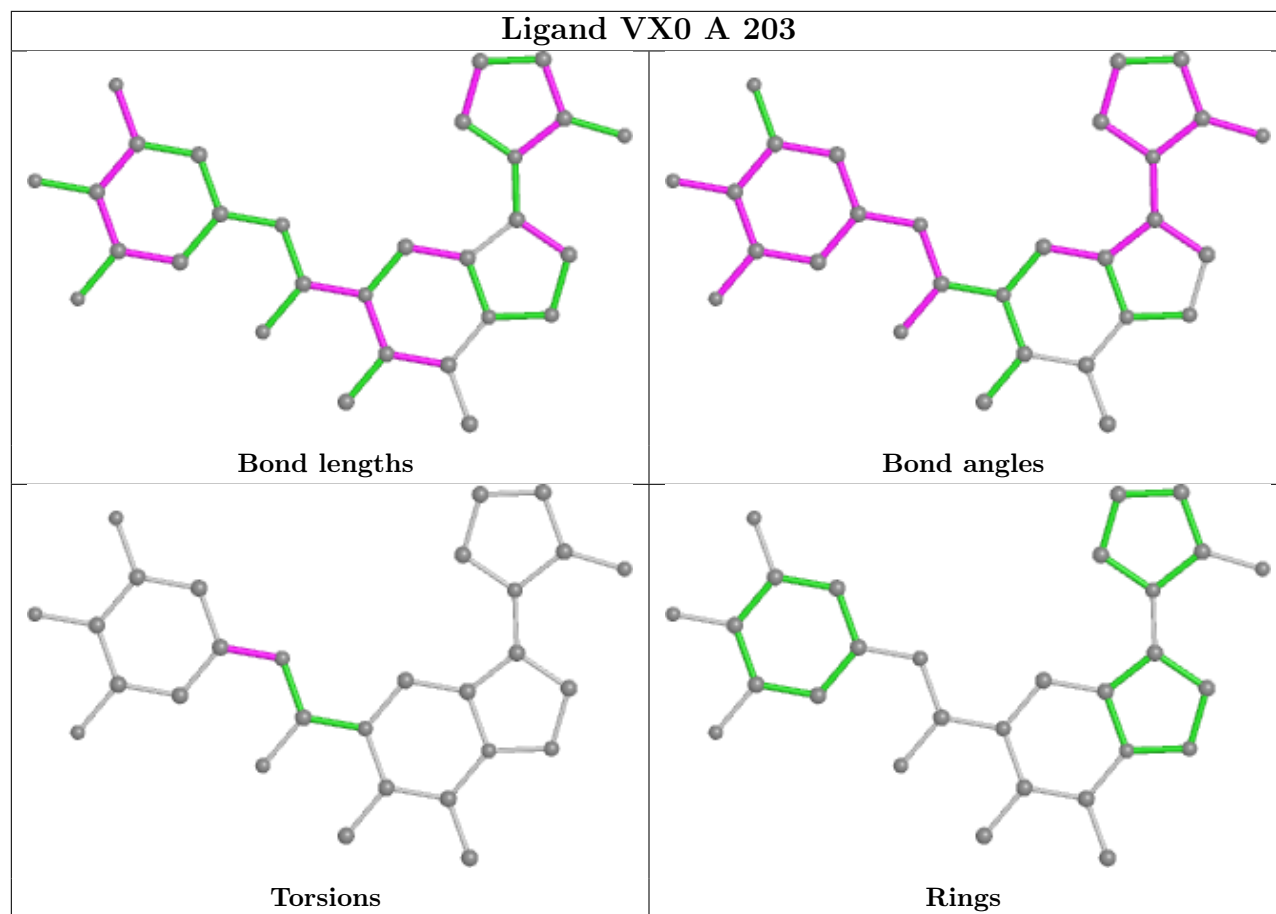
Mol	Chain	Res	Type	Clashes	Symm-Clashes
3	D	202	VX0	1	0
3	C	202	VX0	1	0
3	F	201	VX0	1	0
2	E	202	IPA	1	0
3	E	203	VX0	2	0

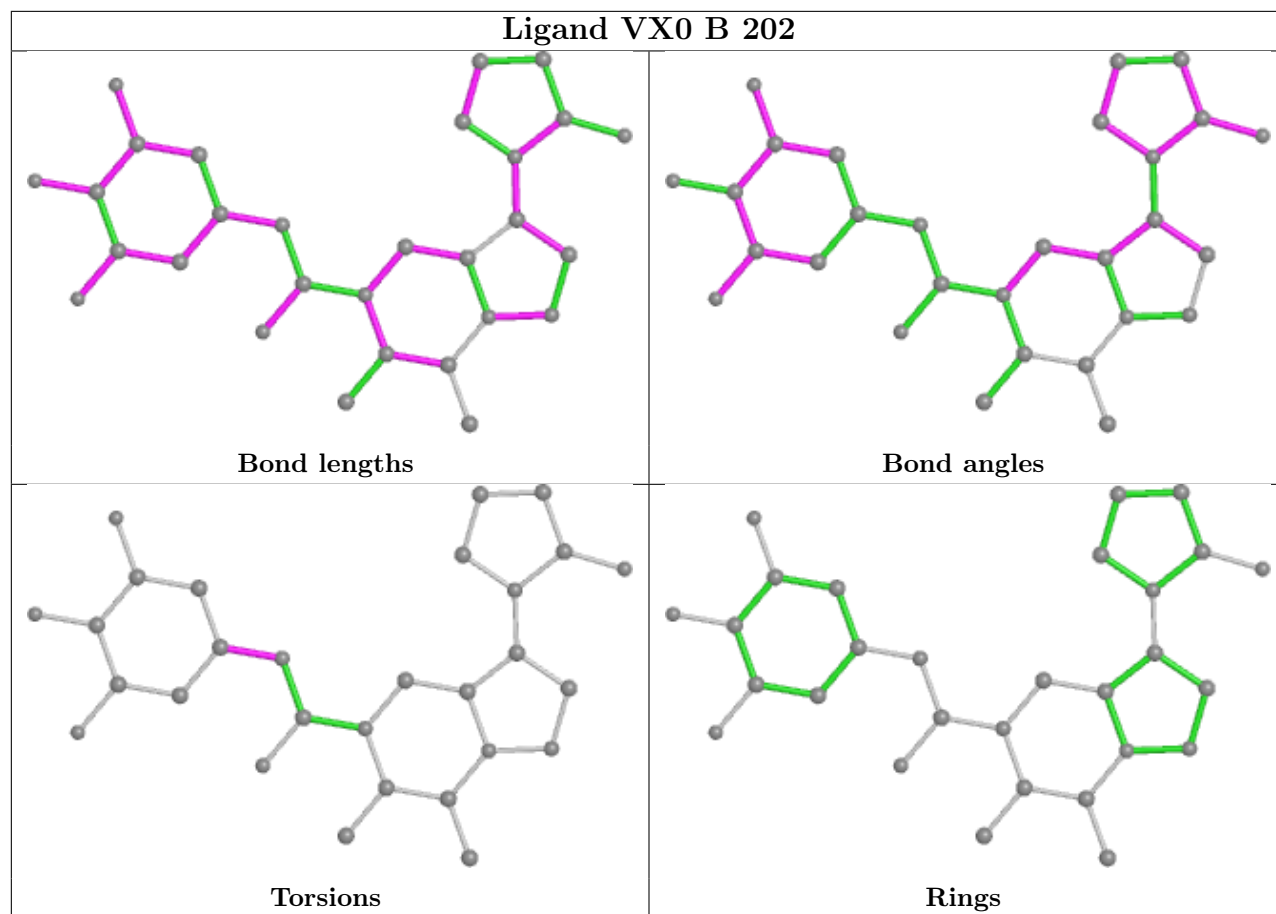
The following is a two-dimensional graphical depiction of Mogul quality analysis of bond lengths, bond angles, torsion angles, and ring geometry for all instances of the Ligand of Interest. In addition, ligands with molecular weight > 250 and outliers as shown on the validation Tables will also be included. For torsion angles, if less than 5% of the Mogul distribution of torsion angles is within 10 degrees of the torsion angle in question, then that torsion angle is considered an outlier. Any bond that is central to one or more torsion angles identified as an outlier by Mogul will be highlighted in the graph. For rings, the root-mean-square deviation (RMSD) between the ring in question and similar rings identified by Mogul is calculated over all ring torsion angles. If the average RMSD is greater than 60 degrees and the minimal RMSD between the ring in question and any Mogul-identified rings is also greater than 60 degrees, then that ring is considered an outlier. The outliers are highlighted in purple. The color gray indicates Mogul did not find sufficient equivalents in the CSD to analyse the geometry.

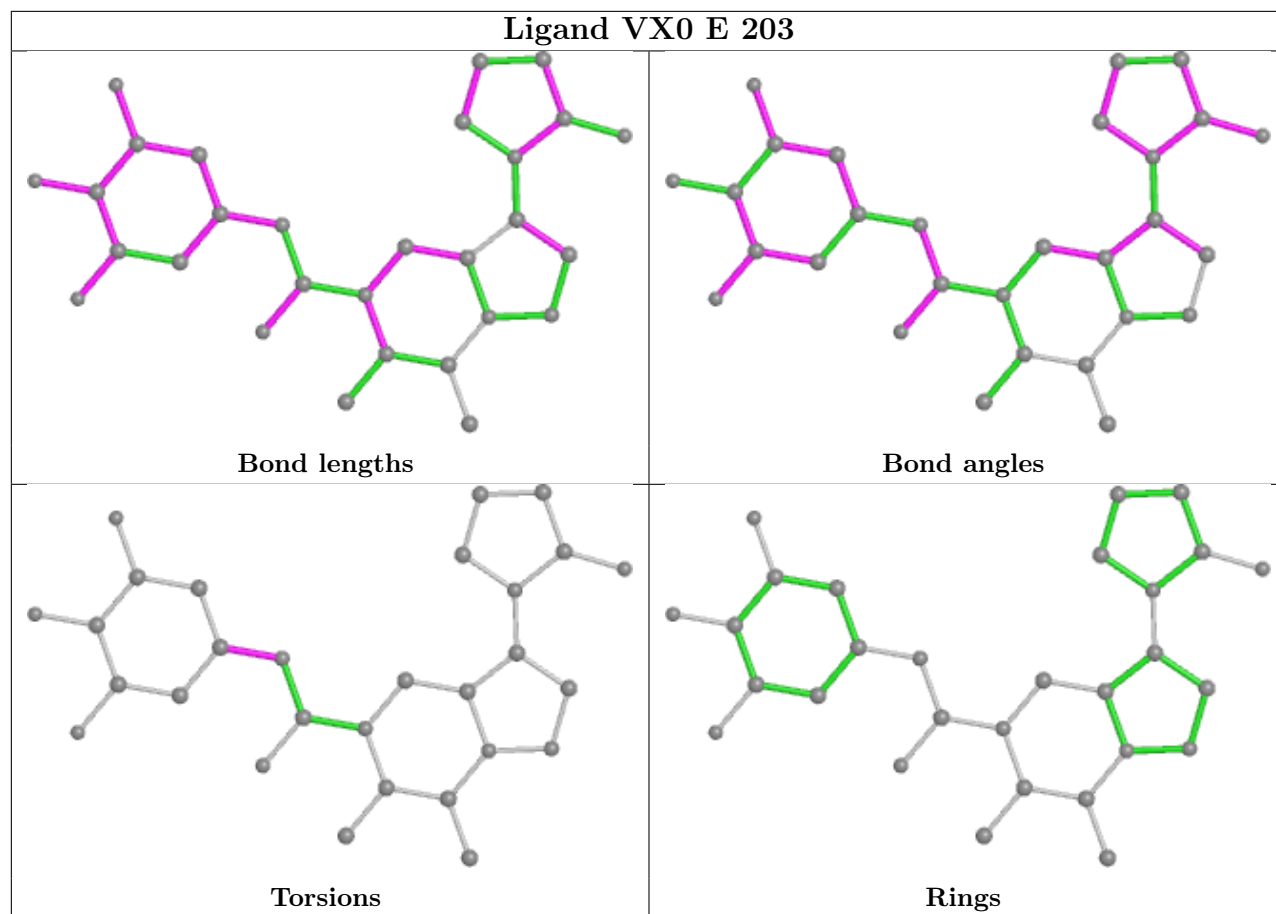












5.7 Other polymers [i](#)

There are no such residues in this entry.

5.8 Polymer linkage issues [i](#)

There are no chain breaks in this entry.

6 Fit of model and data

6.1 Protein, DNA and RNA chains

In the following table, the column labelled ‘#RSRZ > 2’ contains the number (and percentage) of RSRZ outliers, followed by percent RSRZ outliers for the chain as percentile scores relative to all X-ray entries and entries of similar resolution. The OWAB column contains the minimum, median, 95th percentile and maximum values of the occupancy-weighted average B-factor per residue. The column labelled ‘Q < 0.9’ lists the number of (and percentage) of residues with an average occupancy less than 0.9.

Mol	Chain	Analysed	<RSRZ>	#RSRZ>2	OWAB(Å ²)	Q<0.9
1	A	141/155 (90%)	0.09	10 (7%) 16 15	32, 47, 97, 112	0
1	B	148/155 (95%)	-0.04	3 (2%) 65 63	28, 41, 70, 98	0
1	C	141/155 (90%)	-0.12	1 (0%) 87 87	28, 40, 68, 91	0
1	D	155/155 (100%)	0.24	16 (10%) 6 6	29, 43, 86, 118	0
1	E	142/155 (91%)	0.30	19 (13%) 3 2	35, 48, 115, 138	0
1	F	150/155 (96%)	0.29	20 (13%) 3 2	38, 50, 110, 145	0
1	G	5/155 (3%)	3.35	2 (40%) 0 0	106, 110, 119, 134	0
All	All	882/1085 (81%)	0.15	71 (8%) 12 11	28, 46, 97, 145	0

All (71) RSRZ outliers are listed below:

Mol	Chain	Res	Type	RSRZ
1	G	152	LEU	9.7
1	E	80	ALA	7.8
1	D	143	LEU	7.0
1	E	76	LEU	7.0
1	F	76	LEU	6.7
1	F	148	VAL	6.6
1	F	79	PRO	6.5
1	F	80	ALA	5.6
1	E	74	THR	5.6
1	F	84	LEU	5.6
1	F	81	SER	5.5
1	E	81	SER	5.1
1	E	79	PRO	5.0
1	D	84	LEU	5.0
1	A	80	ALA	4.8
1	F	72	VAL	4.7
1	E	84	LEU	4.7

Continued on next page...

Continued from previous page...

Mol	Chain	Res	Type	RSRZ
1	E	71	TRP	4.6
1	E	77	GLU	4.5
1	F	82	ARG	4.5
1	E	72	VAL	4.3
1	D	144	PRO	4.3
1	F	88	TYR	4.2
1	D	80	ALA	4.1
1	D	88	TYR	3.7
1	D	146	THR	3.6
1	E	73	GLY	3.6
1	F	77	GLU	3.6
1	B	141	SER	3.5
1	A	84	LEU	3.4
1	F	78	ASP	3.4
1	E	85	VAL	3.3
1	D	145	GLU	3.3
1	E	78	ASP	3.1
1	D	147	THR	3.1
1	G	154	PHE	3.1
1	A	86	VAL	2.9
1	F	83	ASP	2.8
1	C	140	LEU	2.8
1	D	81	SER	2.8
1	B	142	THR	2.7
1	E	83	ASP	2.7
1	D	148	VAL	2.7
1	E	70	THR	2.7
1	F	147	THR	2.7
1	E	68	LEU	2.6
1	D	90[A]	ASN	2.6
1	F	75	ASN	2.6
1	F	85	VAL	2.5
1	E	69	ALA	2.5
1	D	87	SER	2.5
1	A	79	PRO	2.5
1	A	81	SER	2.5
1	E	75	ASN	2.5
1	F	149	VAL	2.4
1	A	87	SER	2.4
1	D	151	ASN	2.3
1	D	154	PHE	2.3
1	A	83	ASP	2.3

Continued on next page...

Continued from previous page...

Mol	Chain	Res	Type	RSRZ
1	F	69	ALA	2.3
1	A	89	VAL	2.3
1	D	79	PRO	2.3
1	F	151	ASN	2.3
1	F	74	THR	2.2
1	A	141	SER	2.2
1	E	142	THR	2.2
1	B	84	LEU	2.1
1	E	82	ARG	2.1
1	D	142	THR	2.1
1	A	139	ILE	2.1
1	F	73	GLY	2.0

6.2 Non-standard residues in protein, DNA, RNA chains [i](#)

There are no non-standard protein/DNA/RNA residues in this entry.

6.3 Carbohydrates [i](#)

There are no monosaccharides in this entry.

6.4 Ligands [i](#)

In the following table, the Atoms column lists the number of modelled atoms in the group and the number defined in the chemical component dictionary. The B-factors column lists the minimum, median, 95th percentile and maximum values of B factors of atoms in the group. The column labelled 'Q< 0.9' lists the number of atoms with occupancy less than 0.9.

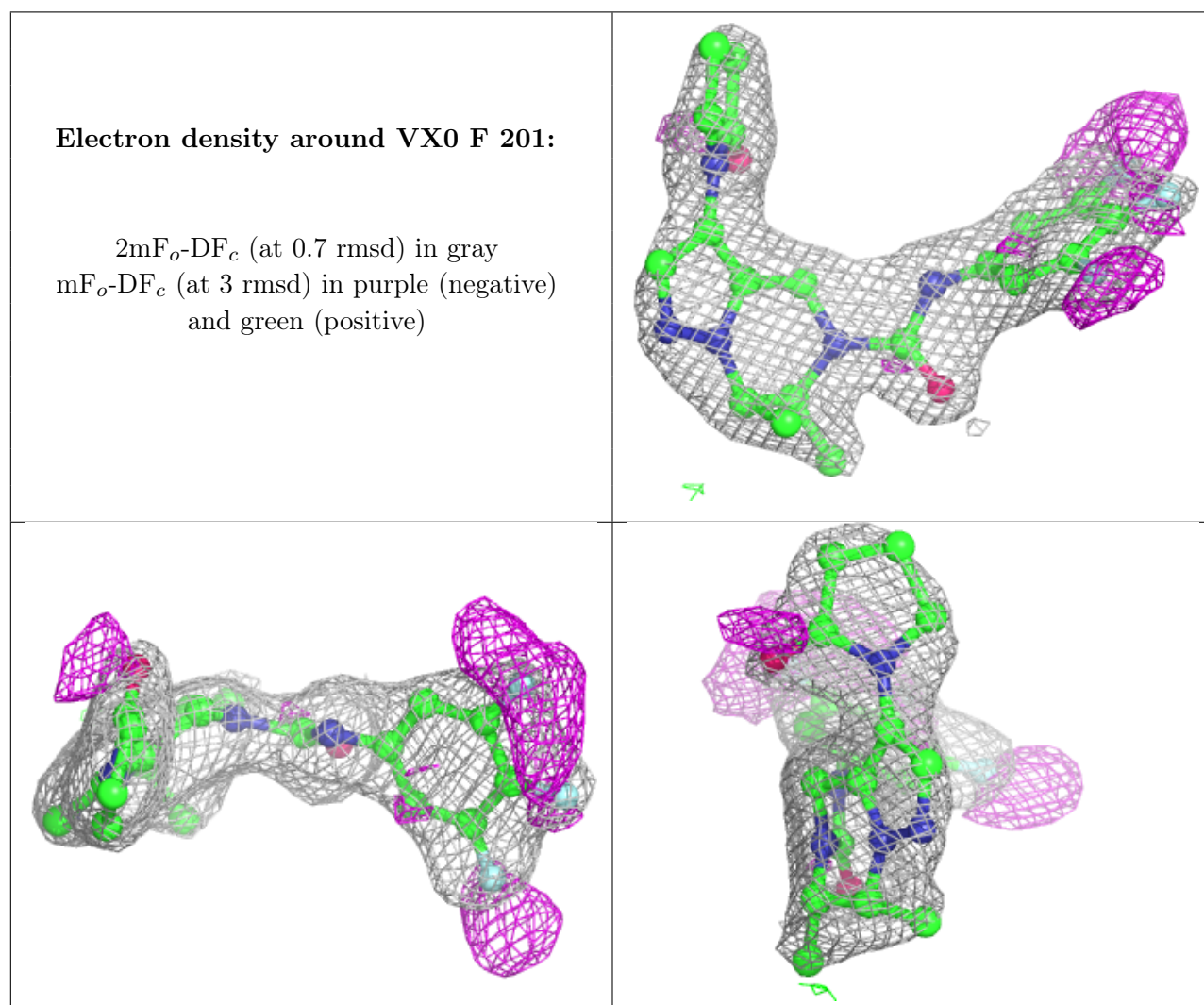
Mol	Type	Chain	Res	Atoms	RSCC	RSR	B-factors(Å ²)	Q<0.9
2	IPA	C	201	4/4	0.84	0.22	37,41,45,51	0
4	GOL	F	202	6/6	0.88	0.09	51,55,58,61	0
3	VX0	F	201	29/29	0.91	0.18	49,57,64,67	0
3	VX0	A	203	29/29	0.92	0.15	42,49,61,67	0
2	IPA	A	202	4/4	0.93	0.13	33,37,40,46	0
3	VX0	D	202	29/29	0.94	0.11	41,45,52,54	0
3	VX0	E	203	29/29	0.94	0.10	41,45,53,54	0
3	VX0	B	202	29/29	0.95	0.10	31,37,45,48	0
3	VX0	C	202	29/29	0.95	0.11	36,44,54,56	0
2	IPA	D	201	4/4	0.95	0.11	36,37,38,40	0
2	IPA	E	201	4/4	0.95	0.23	41,43,45,52	0

Continued on next page...

Continued from previous page...

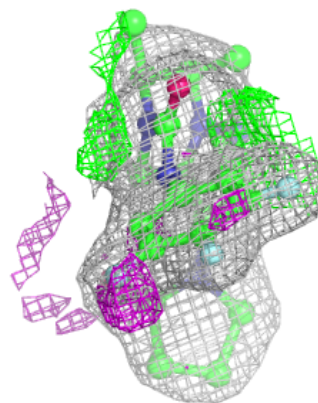
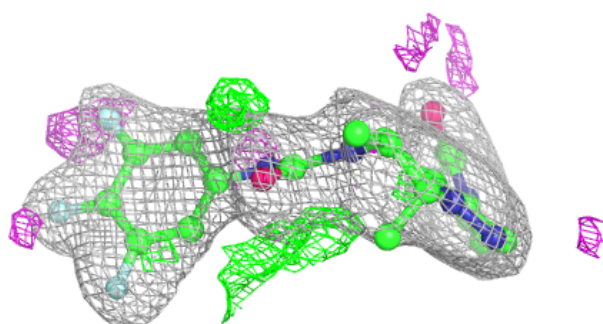
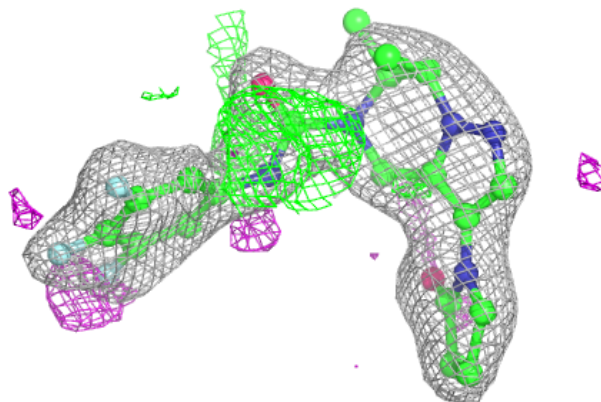
Mol	Type	Chain	Res	Atoms	RSCC	RSR	B-factors(Å ²)	Q<0.9
2	IPA	E	202	4/4	0.95	0.18	40,42,47,49	0
2	IPA	B	201	4/4	0.95	0.12	48,55,56,56	0
2	IPA	A	201	4/4	0.96	0.11	38,40,41,47	0

The following is a graphical depiction of the model fit to experimental electron density of all instances of the Ligand of Interest. In addition, ligands with molecular weight > 250 and outliers as shown on the geometry validation Tables will also be included. Each fit is shown from different orientation to approximate a three-dimensional view.



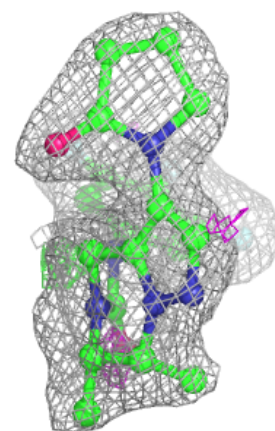
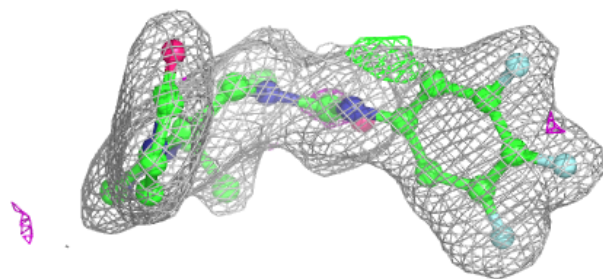
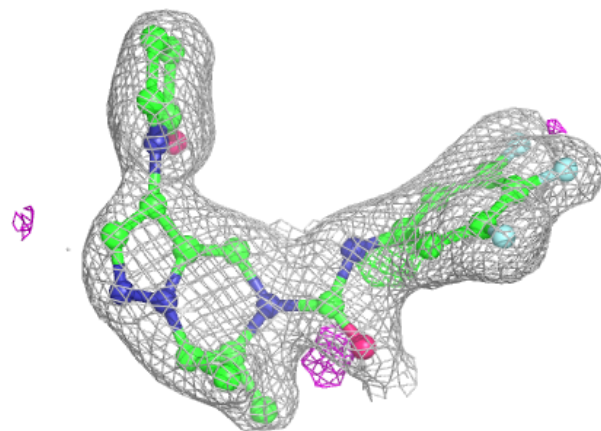
Electron density around VX0 A 203:

$2mF_o-DF_c$ (at 0.7 rmsd) in gray
 mF_o-DF_c (at 3 rmsd) in purple (negative)
and green (positive)



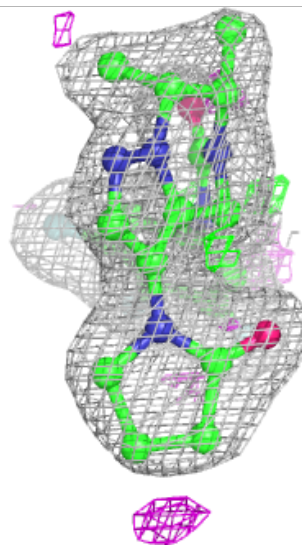
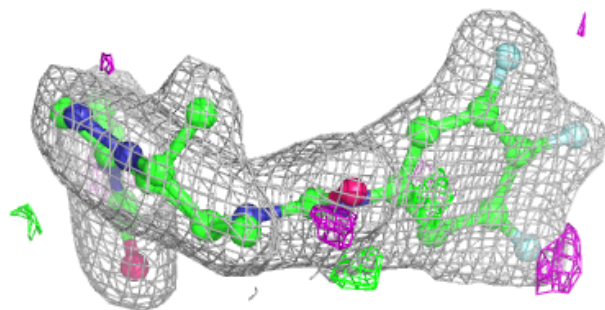
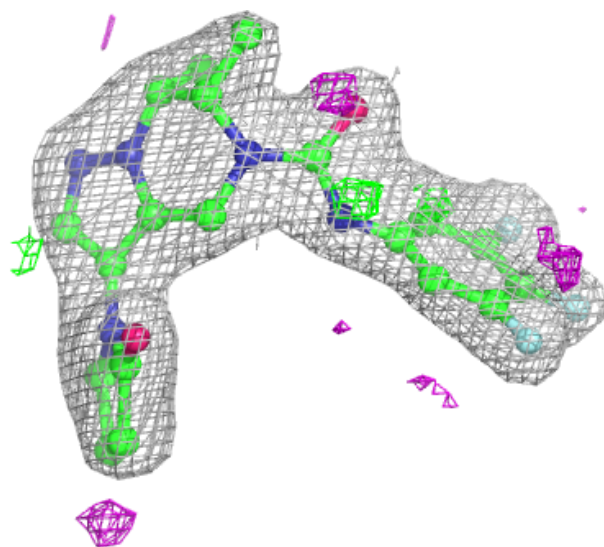
Electron density around VX0 D 202:

$2mF_o-DF_c$ (at 0.7 rmsd) in gray
 mF_o-DF_c (at 3 rmsd) in purple (negative)
and green (positive)



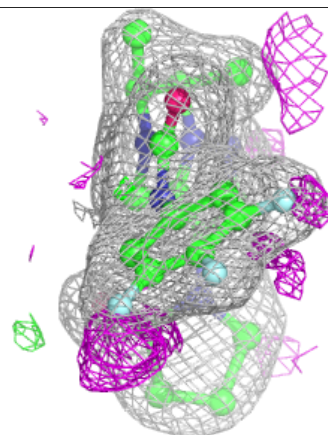
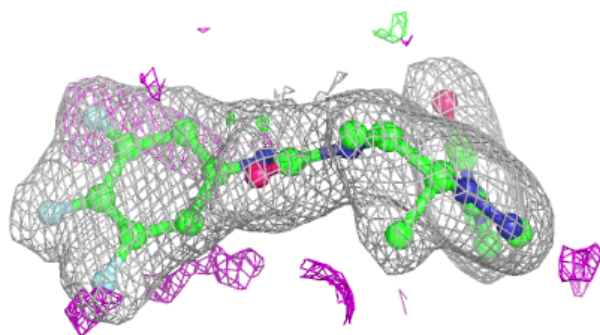
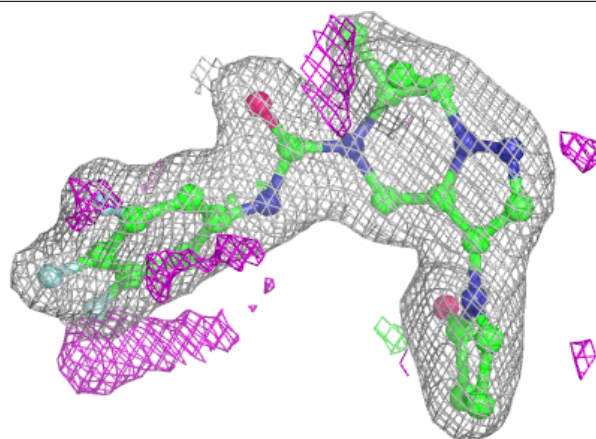
Electron density around VX0 E 203:

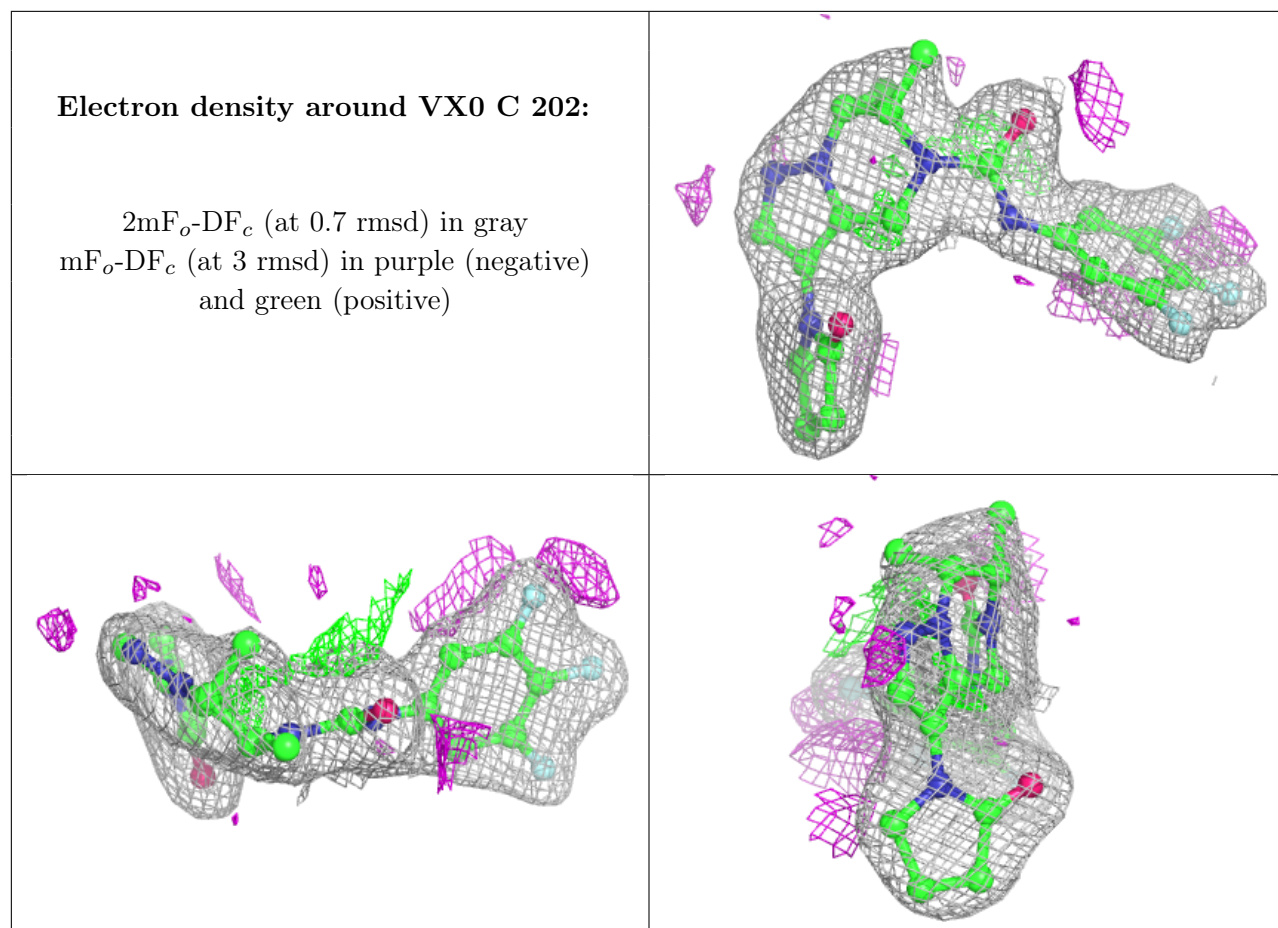
$2mF_o-DF_c$ (at 0.7 rmsd) in gray
 mF_o-DF_c (at 3 rmsd) in purple (negative)
and green (positive)



Electron density around VX0 B 202:

$2mF_o-DF_c$ (at 0.7 rmsd) in gray
 mF_o-DF_c (at 3 rmsd) in purple (negative)
and green (positive)





6.5 Other polymers [i](#)

There are no such residues in this entry.