



Full wwPDB X-ray Structure Validation Report ⓘ

May 15, 2020 – 02:12 pm BST

PDB ID : 1KI3
Title : CRYSTAL STRUCTURE OF THYMIDINE KINASE FROM HERPES SIMPLEX VIRUS TYPE I COMPLEXED WITH PENCICLOVIR
Authors : Champness, J.N.; Bennett, M.S.; Wien, F.; Visse, R.; Jarvest, R.L.; Summers, W.C.; Sanderson, M.R.
Deposited on : 1998-05-15
Resolution : 2.37 Å(reported)

This is a Full wwPDB X-ray Structure Validation Report for a publicly released PDB entry.

We welcome your comments at validation@mail.wwpdb.org

A user guide is available at

<https://www.wwpdb.org/validation/2017/XrayValidationReportHelp>

with specific help available everywhere you see the ⓘ symbol.

The following versions of software and data (see [references ⓘ](#)) were used in the production of this report:

MolProbity : 4.02b-467
Mogul : 1.8.5 (274361), CSD as541be (2020)
Xtriage (Phenix) : 1.13
EDS : 2.11
buster-report : 1.1.7 (2018)
Percentile statistics : 20191225.v01 (using entries in the PDB archive December 25th 2019)
Refmac : 5.8.0158
CCP4 : 7.0.044 (Gargrove)
Ideal geometry (proteins) : Engh & Huber (2001)
Ideal geometry (DNA, RNA) : Parkinson et al. (1996)
Validation Pipeline (wwPDB-VP) : 2.11

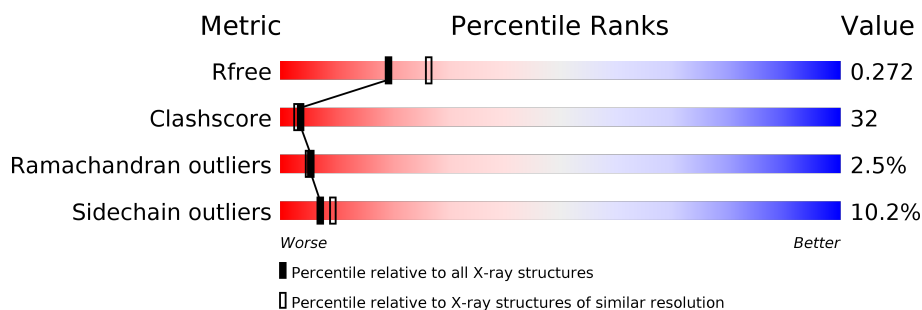
1 Overall quality at a glance

The following experimental techniques were used to determine the structure:

X-RAY DIFFRACTION

The reported resolution of this entry is 2.37 Å.

Percentile scores (ranging between 0-100) for global validation metrics of the entry are shown in the following graphic. The table shows the number of entries on which the scores are based.



Metric	Whole archive (#Entries)	Similar resolution (#Entries, resolution range(Å))
R_{free}	130704	5509 (2.40-2.36)
Clashscore	141614	6082 (2.40-2.36)
Ramachandran outliers	138981	5973 (2.40-2.36)
Sidechain outliers	138945	5975 (2.40-2.36)

The table below summarises the geometric issues observed across the polymeric chains and their fit to the electron density. The red, orange, yellow and green segments on the lower bar indicate the fraction of residues that contain outliers for ≥ 3 , 2, 1 and 0 types of geometric quality criteria respectively. A grey segment represents the fraction of residues that are not modelled. The numeric value for each fraction is indicated below the corresponding segment, with a dot representing fractions $\leq 5\%$.

Mol	Chain	Length	Quality of chain
1	A	331	 48% 40% 5% 7%
1	B	331	 45% 41% 7% 6%

2 Entry composition [i](#)

There are 4 unique types of molecules in this entry. The entry contains 4869 atoms, of which 0 are hydrogens and 0 are deuteriums.

In the tables below, the ZeroOcc column contains the number of atoms modelled with zero occupancy, the AltConf column contains the number of residues with at least one atom in alternate conformation and the Trace column contains the number of residues modelled with at most 2 atoms.

- Molecule 1 is a protein called THYMIDINE KINASE.

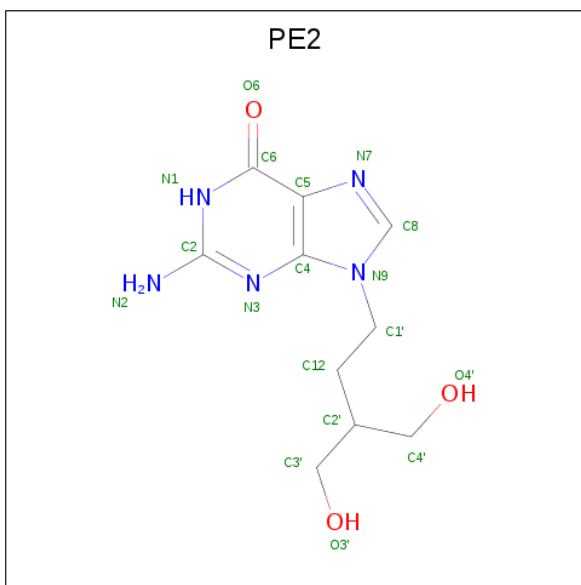
Mol	Chain	Residues	Atoms					ZeroOcc	AltConf	Trace
			Total	C	N	O	S			
1	A	309	Total 2339	C 1490	N 411	O 423	S 15	0	0	3
1	B	311	Total 2352	C 1500	N 413	O 424	S 15	0	0	3

- Molecule 2 is SULFATE ION (three-letter code: SO4) (formula: O₄S).



Mol	Chain	Residues	Atoms			ZeroOcc	AltConf
			Total	O	S		
2	A	1	Total 5	O 4	S 1	0	0
2	B	1	Total 5	O 4	S 1	0	0

- Molecule 3 is 9-(4-HYDROXY-3-(HYDROXYMETHYL)BUT-1-YL)GUANINE (three-letter code: PE2) (formula: C₁₀H₁₅N₅O₃).



Mol	Chain	Residues	Atoms				ZeroOcc	AltConf
			Total	C	N	O		
3	A	1	18	10	5	3	0	0
3	B	1	18	10	5	3	0	0

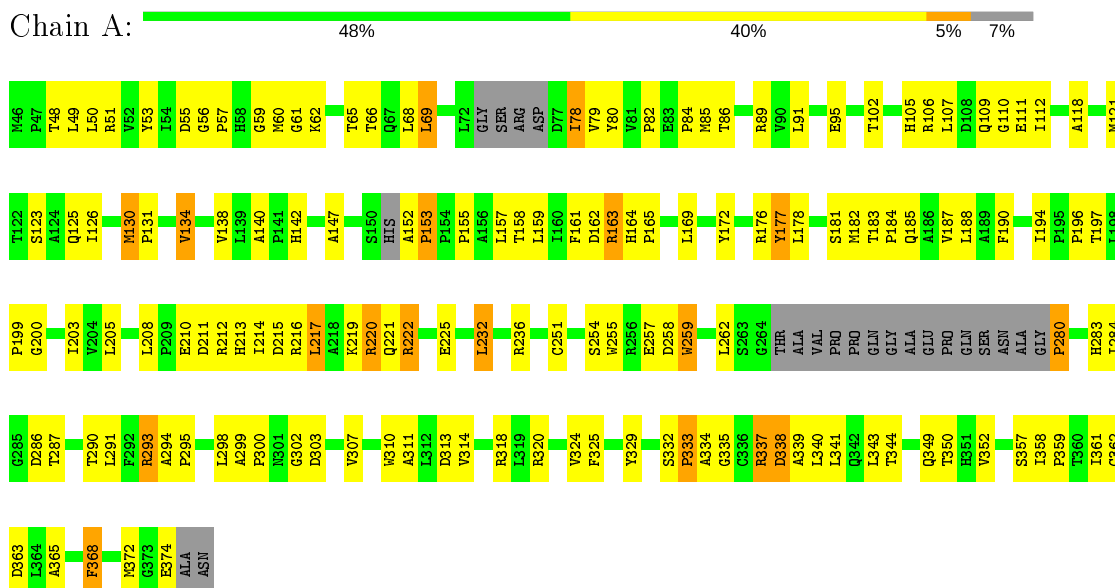
- Molecule 4 is water.

Mol	Chain	Residues	Atoms		ZeroOcc	AltConf
			Total	O		
4	A	69	69	69	0	0
4	B	63	63	63	0	0

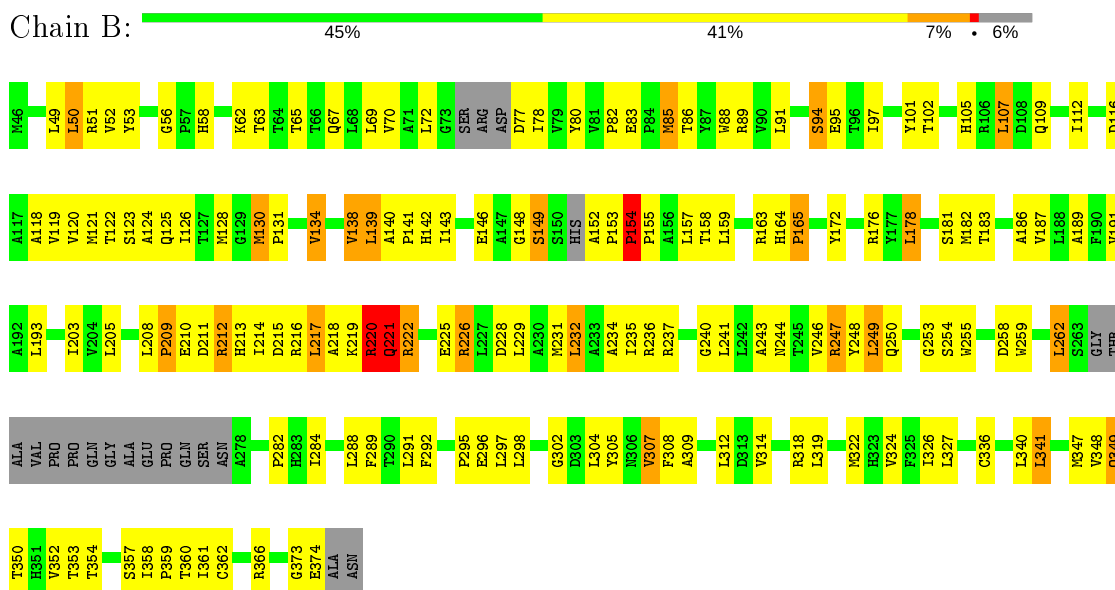
3 Residue-property plots [i](#)

These plots are drawn for all protein, RNA and DNA chains in the entry. The first graphic for a chain summarises the proportions of the various outlier classes displayed in the second graphic. The second graphic shows the sequence view annotated by issues in geometry. Residues are color-coded according to the number of geometric quality criteria for which they contain at least one outlier: green = 0, yellow = 1, orange = 2 and red = 3 or more. Stretches of 2 or more consecutive residues without any outlier are shown as a green connector. Residues present in the sample, but not in the model, are shown in grey.

- Molecule 1: THYMIDINE KINASE



- Molecule 1: THYMIDINE KINASE



4 Data and refinement statistics

Property	Value	Source
Space group	C 2 2 21	Depositor
Cell constants a, b, c, α , β , γ	113.80Å 117.70Å 108.60Å 90.00° 90.00° 90.00°	Depositor
Resolution (Å)	12.00 – 2.37 11.99 – 2.36	Depositor EDS
% Data completeness (in resolution range)	70.4 (12.00-2.37) 69.7 (11.99-2.36)	Depositor EDS
R_{merge}	(Not available)	Depositor
R_{sym}	0.11	Depositor
$\langle I/\sigma(I) \rangle$ ¹	1.63 (at 2.35Å)	Xtrriage
Refinement program	X-PLOR 3.1	Depositor
R, R_{free}	0.200 , 0.314 0.235 , 0.272	Depositor DCC
R_{free} test set	2096 reflections (10.00%)	wwPDB-VP
Wilson B-factor (Å ²)	25.7	Xtrriage
Anisotropy	0.096	Xtrriage
Bulk solvent k_{sol} (e/Å ³), B_{sol} (Å ²)	0.29 , 37.6	EDS
L-test for twinning ²	$\langle L \rangle = 0.44$, $\langle L^2 \rangle = 0.27$	Xtrriage
Estimated twinning fraction	0.057 for -k,-h,-l	Xtrriage
F_o, F_c correlation	0.87	EDS
Total number of atoms	4869	wwPDB-VP
Average B, all atoms (Å ²)	20.0	wwPDB-VP

Xtrriage's analysis on translational NCS is as follows: *The largest off-origin peak in the Patterson function is 6.12% of the height of the origin peak. No significant pseudotranslation is detected.*

¹Intensities estimated from amplitudes.

²Theoretical values of $\langle |L| \rangle$, $\langle L^2 \rangle$ for acentric reflections are 0.5, 0.333 respectively for untwinned datasets, and 0.375, 0.2 for perfectly twinned datasets.

5 Model quality [i](#)

5.1 Standard geometry [i](#)

Bond lengths and bond angles in the following residue types are not validated in this section: SO4, PE2

The Z score for a bond length (or angle) is the number of standard deviations the observed value is removed from the expected value. A bond length (or angle) with $|Z| > 5$ is considered an outlier worth inspection. RMSZ is the root-mean-square of all Z scores of the bond lengths (or angles).

Mol	Chain	Bond lengths		Bond angles	
		RMSZ	# Z >5	RMSZ	# Z >5
1	A	0.67	0/2392	0.85	3/3267 (0.1%)
1	B	0.70	0/2406	0.86	2/3287 (0.1%)
All	All	0.69	0/4798	0.85	5/6554 (0.1%)

There are no bond length outliers.

All (5) bond angle outliers are listed below:

Mol	Chain	Res	Type	Atoms	Z	Observed(°)	Ideal(°)
1	A	280	PRO	N-CA-CB	6.45	111.03	103.30
1	A	69	LEU	CA-CB-CG	6.31	129.81	115.30
1	B	304	LEU	CA-CB-CG	5.64	128.27	115.30
1	A	291	LEU	CA-CB-CG	5.48	127.91	115.30
1	B	139	LEU	CA-CB-CG	5.45	127.83	115.30

There are no chirality outliers.

There are no planarity outliers.

5.2 Too-close contacts [i](#)

In the following table, the Non-H and H(model) columns list the number of non-hydrogen atoms and hydrogen atoms in the chain respectively. The H(added) column lists the number of hydrogen atoms added and optimized by MolProbity. The Clashes column lists the number of clashes within the asymmetric unit, whereas Symm-Clashes lists symmetry related clashes.

Mol	Chain	Non-H	H(model)	H(added)	Clashes	Symm-Clashes
1	A	2339	0	2349	149	0
1	B	2352	0	2368	152	0
2	A	5	0	0	0	0
2	B	5	0	0	0	0

Continued on next page...

Continued from previous page...

Mol	Chain	Non-H	H(model)	H(added)	Clashes	Symm-Clashes
3	A	18	0	15	0	0
3	B	18	0	15	5	0
4	A	69	0	0	5	0
4	B	63	0	0	4	0
All	All	4869	0	4747	299	0

The all-atom clashscore is defined as the number of clashes found per 1000 atoms (including hydrogen atoms). The all-atom clashscore for this structure is 32.

All (299) close contacts within the same asymmetric unit are listed below, sorted by their clash magnitude.

Atom-1	Atom-2	Interatomic distance (Å)	Clash overlap (Å)
1:A:254:SER:HB3	1:A:257:GLU:HG2	1.30	1.10
1:A:84:PRO:HG3	1:A:368:PHE:HZ	1.19	1.02
1:B:62:LYS:HE2	1:B:163:ARG:HH12	1.37	0.89
1:A:232:LEU:HD13	1:A:236:ARG:HD2	1.54	0.88
1:A:84:PRO:HG3	1:A:368:PHE:CZ	2.09	0.85
1:A:334:ALA:HA	1:A:337:ARG:HB3	1.58	0.85
1:A:130:MET:HB3	1:A:131:PRO:HD3	1.59	0.85
1:A:251:CYS:SG	1:A:280:PRO:O	2.37	0.82
1:A:78:ILE:HG12	1:A:158:THR:HB	1.64	0.80
1:A:121:MET:HG3	1:A:182:MET:HE2	1.64	0.80
1:B:327:LEU:HD22	1:B:340:LEU:HB2	1.64	0.80
1:B:211:ASP:O	1:B:215:ASP:HB2	1.85	0.77
1:B:358:ILE:HB	1:B:359:PRO:HD3	1.65	0.77
1:B:63:THR:O	1:B:67:GLN:HG2	1.85	0.77
1:B:88:TRP:CE3	1:B:97:ILE:HD11	2.20	0.77
1:B:178:LEU:HD11	1:B:291:LEU:HD22	1.66	0.76
1:B:149:SER:HA	1:B:347:MET:O	1.86	0.76
3:B:2:PE2:H1'2	4:B:527:HOH:O	1.84	0.76
1:A:61:GLY:O	1:A:65:THR:HG23	1.86	0.76
1:A:68:LEU:HB3	1:A:337:ARG:HG3	1.68	0.75
1:B:183:THR:O	1:B:187:VAL:HG23	1.86	0.73
1:B:216:ARG:O	1:B:219:LYS:HG2	1.89	0.73
1:A:217:LEU:HD12	1:A:232:LEU:HG	1.70	0.73
1:B:208:LEU:HD11	1:B:212:ARG:HD2	1.69	0.72
1:A:176:ARG:HB2	1:A:182:MET:HE3	1.72	0.71
1:A:126:ILE:HD11	1:B:126:ILE:HD11	1.72	0.71
1:B:210:GLU:HG3	1:B:214:ILE:HD13	1.73	0.71
1:A:69:LEU:HD22	1:A:341:LEU:HG	1.72	0.70
1:A:184:PRO:HG2	1:A:185:GLN:OE1	1.91	0.70

Continued on next page...

Continued from previous page...

Atom-1	Atom-2	Interatomic distance (Å)	Clash overlap (Å)
1:B:246:VAL:O	1:B:250:GLN:HG3	1.92	0.70
1:A:232:LEU:O	1:A:236:ARG:HG3	1.92	0.70
1:B:248:TYR:HB2	1:B:282:PRO:HG2	1.74	0.70
1:A:314:VAL:HG13	1:A:318:ARG:NH1	2.07	0.69
1:A:85:MET:HB3	1:A:374:GLU:HB3	1.74	0.69
1:A:164:HIS:CG	1:A:165:PRO:HD2	2.27	0.69
1:B:258:ASP:HB2	1:B:284:ILE:HD12	1.73	0.68
1:B:69:LEU:HD11	1:B:341:LEU:HD23	1.74	0.68
1:A:213:HIS:CE1	1:A:232:LEU:HD21	2.29	0.68
1:B:163:ARG:HH21	1:B:172:TYR:HE2	1.39	0.68
1:B:107:LEU:HA	1:B:112:ILE:HG22	1.76	0.68
1:A:49:LEU:HD12	1:A:157:LEU:O	1.94	0.67
1:A:130:MET:O	1:A:134:VAL:HG23	1.95	0.67
1:B:69:LEU:CD1	1:B:341:LEU:HD23	2.25	0.67
1:B:62:LYS:HE2	1:B:163:ARG:NH1	2.09	0.66
1:B:118:ALA:HA	1:B:181:SER:O	1.96	0.66
1:B:85:MET:HE3	1:B:88:TRP:HE3	1.60	0.66
1:A:69:LEU:CD2	1:A:341:LEU:HG	2.26	0.66
1:B:121:MET:HG3	1:B:181:SER:HB2	1.78	0.66
1:A:142:HIS:HB3	1:A:361:ILE:HD11	1.78	0.65
1:B:53:TYR:HB2	1:B:203:ILE:HD13	1.78	0.65
1:A:211:ASP:HA	1:A:214:ILE:HD12	1.77	0.65
1:A:358:ILE:HB	1:A:359:PRO:HD3	1.79	0.65
1:A:118:ALA:HA	1:A:181:SER:O	1.96	0.64
1:B:226:ARG:HA	4:B:557:HOH:O	1.98	0.63
1:A:79:VAL:HG12	1:A:80:TYR:N	2.14	0.62
1:B:49:LEU:CD1	1:B:157:LEU:HD23	2.30	0.61
1:A:212:ARG:NH2	1:A:216:ARG:HE	1.97	0.61
1:B:62:LYS:CE	1:B:163:ARG:HH12	2.12	0.61
1:A:57:PRO:HD2	1:A:60:MET:CE	2.30	0.61
1:B:112:ILE:HG12	1:B:116:ASP:HB2	1.82	0.60
1:B:116:ASP:O	1:B:120:VAL:HG23	2.01	0.60
1:B:130:MET:O	1:B:134:VAL:HG23	2.01	0.60
1:B:212:ARG:O	1:B:216:ARG:HG3	2.01	0.60
1:B:262:LEU:CD1	1:B:284:ILE:HG23	2.31	0.60
1:A:147:ALA:O	1:A:152:ALA:N	2.35	0.59
1:B:373:GLY:O	1:B:374:GLU:HB2	2.01	0.59
1:B:176:ARG:CB	1:B:182:MET:HE3	2.32	0.59
1:B:298:LEU:HD22	1:B:302:GLY:O	2.02	0.59
1:A:155:PRO:HD3	1:A:349:GLN:NE2	2.17	0.59
1:A:79:VAL:HG12	1:A:80:TYR:H	1.67	0.59

Continued on next page...

Continued from previous page...

Atom-1	Atom-2	Interatomic distance (Å)	Clash overlap (Å)
1:A:85:MET:CE	1:A:89:ARG:HG2	2.33	0.58
1:B:134:VAL:O	1:B:138:VAL:HG22	2.03	0.58
1:A:109:GLN:O	1:A:111:GLU:HG3	2.04	0.58
3:B:2:PE2:H8	3:B:2:PE2:O3'	2.03	0.58
1:A:155:PRO:HD3	1:A:349:GLN:HE22	1.67	0.58
1:B:215:ASP:O	1:B:218:ALA:HB3	2.04	0.58
1:A:334:ALA:O	1:A:338:ASP:N	2.34	0.58
1:B:208:LEU:HD12	1:B:209:PRO:HD2	1.85	0.58
1:B:214:ILE:HG13	1:B:229:LEU:HD22	1.85	0.58
1:B:327:LEU:CD2	1:B:340:LEU:HB2	2.31	0.58
1:B:85:MET:HE2	1:B:89:ARG:HG2	1.86	0.57
1:B:292:PHE:CD2	1:B:312:LEU:HD21	2.40	0.57
1:A:318:ARG:NH1	4:A:585:HOH:O	2.36	0.57
1:A:62:LYS:HB2	1:A:62:LYS:NZ	2.20	0.57
1:B:50:LEU:HB2	1:B:349:GLN:HB3	1.84	0.57
1:A:59:GLY:O	1:A:213:HIS:HD2	1.87	0.57
1:B:49:LEU:HD13	1:B:157:LEU:HD23	1.87	0.57
1:A:121:MET:HG3	1:A:182:MET:CE	2.35	0.56
1:A:232:LEU:CD1	1:A:236:ARG:HD2	2.32	0.56
1:A:222:ARG:HB2	1:A:225:GLU:HG3	1.88	0.56
1:B:246:VAL:HG21	1:B:324:VAL:HG21	1.87	0.56
1:B:139:LEU:HD11	1:B:143:ILE:HD11	1.87	0.56
1:A:134:VAL:O	1:A:138:VAL:HG23	2.05	0.56
1:A:130:MET:SD	1:A:134:VAL:CG2	2.94	0.55
1:A:176:ARG:CB	1:A:182:MET:HE3	2.35	0.55
1:A:163:ARG:NH2	1:A:172:TYR:OH	2.39	0.55
1:B:130:MET:HB3	1:B:131:PRO:HD3	1.89	0.55
1:A:258:ASP:HB2	1:A:284:ILE:HD12	1.89	0.55
1:A:69:LEU:HD23	1:A:337:ARG:HD3	1.88	0.55
1:A:287:THR:O	1:A:290:THR:HG22	2.07	0.55
1:A:205:LEU:HD12	1:A:324:VAL:HG21	1.88	0.55
1:A:60:MET:HG2	1:A:213:HIS:CD2	2.42	0.55
1:B:85:MET:HE3	1:B:88:TRP:CE3	2.41	0.55
1:B:222:ARG:O	1:B:225:GLU:HB3	2.06	0.54
1:A:219:LYS:HG2	1:A:220:ARG:N	2.23	0.54
1:B:213:HIS:HB2	1:B:236:ARG:HH21	1.72	0.54
1:A:69:LEU:HD11	1:A:340:LEU:HG	1.88	0.54
1:A:208:LEU:O	1:A:236:ARG:NH2	2.41	0.54
1:A:86:THR:HG22	1:A:91:LEU:HG	1.90	0.54
1:A:185:GLN:N	1:A:185:GLN:OE1	2.39	0.54
1:B:69:LEU:HD11	1:B:341:LEU:CD2	2.37	0.54

Continued on next page...

Continued from previous page...

Atom-1	Atom-2	Interatomic distance (Å)	Clash overlap (Å)
1:B:142:HIS:HA	1:B:353:THR:HB	1.90	0.54
1:B:146:GLU:CD	1:B:348:VAL:HG11	2.28	0.54
1:B:69:LEU:HD22	1:B:340:LEU:CD2	2.39	0.53
1:B:362:CYS:O	1:B:366:ARG:HG3	2.08	0.53
1:B:262:LEU:HD11	1:B:284:ILE:HG23	1.90	0.53
1:B:176:ARG:HB2	1:B:182:MET:HE3	1.91	0.53
1:B:142:HIS:CD2	1:B:357:SER:OG	2.62	0.53
1:B:222:ARG:N	1:B:222:ARG:HD2	2.22	0.53
1:B:88:TRP:HE3	1:B:97:ILE:HD11	1.74	0.53
1:B:121:MET:CE	1:B:125:GLN:HE21	2.21	0.53
1:B:314:VAL:O	1:B:318:ARG:HG2	2.09	0.53
1:B:142:HIS:HD2	1:B:357:SER:OG	1.91	0.53
1:A:220:ARG:HB3	1:A:220:ARG:HH11	1.74	0.53
1:A:298:LEU:HA	1:A:303:ASP:O	2.08	0.52
1:A:123:SER:O	1:A:126:ILE:HB	2.09	0.52
1:A:85:MET:HE3	1:A:89:ARG:HG2	1.90	0.52
1:B:244:ASN:HA	1:B:247:ARG:HE	1.75	0.52
1:A:130:MET:SD	1:A:134:VAL:HG21	2.50	0.52
1:B:146:GLU:OE1	1:B:348:VAL:HG11	2.09	0.52
1:B:214:ILE:HD12	1:B:232:LEU:CD1	2.39	0.52
1:A:102:THR:O	1:A:105:HIS:HB3	2.10	0.52
1:A:220:ARG:O	1:A:221:GLN:HG2	2.10	0.52
1:B:83:GLU:HG2	1:B:88:TRP:CH2	2.44	0.52
1:A:106:ARG:NH2	4:A:566:HOH:O	2.42	0.52
1:A:59:GLY:O	1:A:213:HIS:CD2	2.63	0.52
1:A:126:ILE:HD13	1:A:190:PHE:HE1	1.75	0.51
1:A:130:MET:HB3	1:A:131:PRO:CD	2.37	0.51
1:A:157:LEU:HD22	1:A:358:ILE:HG23	1.91	0.51
1:B:255:TRP:HA	1:B:284:ILE:HD12	1.92	0.51
1:B:289:PHE:HD1	1:B:312:LEU:HD22	1.75	0.51
1:B:220:ARG:HG2	1:B:221:GLN:N	2.25	0.51
1:B:232:LEU:O	1:B:236:ARG:HG3	2.10	0.51
1:A:203:ILE:O	1:A:324:VAL:HA	2.10	0.51
1:B:248:TYR:CE2	1:B:253:GLY:HA3	2.46	0.51
1:A:169:LEU:HD13	1:A:194:ILE:HA	1.92	0.51
1:A:106:ARG:NH1	1:A:112:ILE:HD13	2.26	0.50
1:A:333:PRO:C	1:A:335:GLY:H	2.14	0.50
1:A:205:LEU:HD12	1:A:324:VAL:CG2	2.41	0.50
1:A:78:ILE:HG12	1:A:158:THR:CB	2.39	0.50
1:A:333:PRO:O	1:A:334:ALA:HB3	2.11	0.50
1:A:56:GLY:O	1:A:163:ARG:NH2	2.44	0.50

Continued on next page...

Continued from previous page...

Atom-1	Atom-2	Interatomic distance (Å)	Clash overlap (Å)
1:B:219:LYS:O	1:B:220:ARG:HB2	2.11	0.50
1:A:183:THR:HG22	1:A:185:GLN:H	1.76	0.50
1:B:254:SER:HA	4:B:550:HOH:O	2.12	0.50
1:A:352:VAL:HB	1:A:357:SER:CB	2.42	0.50
1:A:51:ARG:NH1	1:A:53:TYR:OH	2.45	0.49
1:A:334:ALA:CA	1:A:337:ARG:HB3	2.39	0.49
1:B:213:HIS:HB2	1:B:236:ARG:NH2	2.27	0.49
1:B:89:ARG:HD2	1:B:95:GLU:OE1	2.13	0.49
1:B:86:THR:HG22	1:B:91:LEU:HG	1.95	0.49
1:A:217:LEU:HD12	1:A:232:LEU:CG	2.40	0.49
1:A:159:LEU:HD13	1:A:161:PHE:CZ	2.48	0.49
1:A:314:VAL:CG1	1:A:318:ARG:NH1	2.74	0.49
1:A:79:VAL:HG11	1:A:365:ALA:HB3	1.94	0.49
1:A:51:ARG:NH2	1:A:199:PRO:O	2.46	0.48
1:B:228:ASP:HB3	1:B:231:MET:HB3	1.95	0.48
1:A:162:ASP:O	1:A:163:ARG:HB2	2.13	0.48
1:A:222:ARG:H	1:A:222:ARG:HD3	1.79	0.48
1:B:118:ALA:O	1:B:122:THR:HG22	2.12	0.48
1:A:62:LYS:HE2	1:A:163:ARG:NH1	2.28	0.48
1:B:247:ARG:O	1:B:248:TYR:C	2.51	0.48
1:A:123:SER:HB3	1:B:122:THR:CG2	2.44	0.48
1:A:219:LYS:O	1:A:220:ARG:HB3	2.13	0.48
1:A:183:THR:HG22	1:A:185:GLN:N	2.28	0.48
1:B:107:LEU:CA	1:B:112:ILE:HG22	2.43	0.48
1:A:295:PRO:HA	1:A:298:LEU:HD12	1.95	0.47
1:B:187:VAL:O	1:B:191:VAL:HG23	2.15	0.47
1:A:177:TYR:HA	1:A:182:MET:O	2.14	0.47
1:A:332:SER:HB2	1:A:333:PRO:HD2	1.95	0.47
1:A:79:VAL:HG11	1:A:365:ALA:CB	2.45	0.47
1:B:78:ILE:HA	1:B:158:THR:O	2.14	0.47
1:A:310:TRP:O	1:A:313:ASP:HB2	2.13	0.47
1:A:219:LYS:NZ	1:A:220:ARG:O	2.41	0.47
1:A:333:PRO:O	1:A:335:GLY:N	2.41	0.47
1:A:221:GLN:NE2	1:A:222:ARG:NH1	2.62	0.47
1:B:176:ARG:HB3	1:B:182:MET:HE3	1.95	0.47
1:B:125:GLN:HE22	3:B:2:PE2:C6	2.28	0.47
1:A:294:ALA:HA	1:A:295:PRO:HD2	1.77	0.47
3:B:2:PE2:H1'1	3:B:2:PE2:H3'1	1.61	0.46
1:B:208:LEU:O	1:B:236:ARG:NH2	2.42	0.46
1:A:153:PRO:HB3	1:A:349:GLN:HE22	1.81	0.46
1:B:121:MET:HB3	1:B:182:MET:CE	2.45	0.46

Continued on next page...

Continued from previous page...

Atom-1	Atom-2	Interatomic distance (Å)	Clash overlap (Å)
1:B:121:MET:HB3	1:B:182:MET:HE2	1.96	0.46
1:B:241:LEU:HD13	1:B:288:LEU:HA	1.98	0.46
1:B:319:LEU:HD23	1:B:322:MET:SD	2.55	0.46
1:B:240:GLY:O	1:B:243:ALA:N	2.48	0.46
1:B:262:LEU:HD13	1:B:284:ILE:HG23	1.98	0.46
1:A:164:HIS:ND1	1:A:165:PRO:HD2	2.30	0.46
1:A:372:MET:HE2	1:B:307:VAL:HG13	1.98	0.46
1:B:107:LEU:HD23	1:B:112:ILE:HG23	1.97	0.46
1:B:62:LYS:CE	1:B:163:ARG:NH1	2.76	0.46
1:A:142:HIS:HE1	4:A:515:HOH:O	1.98	0.46
1:B:362:CYS:SG	1:B:366:ARG:CZ	3.04	0.46
1:A:221:GLN:NE2	1:A:222:ARG:HH12	2.14	0.45
1:A:85:MET:HE2	1:A:89:ARG:HG2	1.97	0.45
1:A:126:ILE:CD1	1:B:126:ILE:HD11	2.45	0.45
1:A:121:MET:O	1:A:125:GLN:HG2	2.15	0.45
1:A:48:THR:OG1	1:A:155:PRO:HA	2.16	0.45
1:B:248:TYR:CD2	1:B:249:LEU:HD23	2.52	0.45
1:A:221:GLN:HB2	4:A:627:HOH:O	2.16	0.45
1:A:50:LEU:HD23	1:A:349:GLN:HG2	1.98	0.45
1:A:62:LYS:HZ2	1:A:62:LYS:HB2	1.80	0.45
1:B:50:LEU:HD12	1:B:158:THR:HG23	1.97	0.45
1:B:164:HIS:CD2	1:B:203:ILE:HD11	2.51	0.45
1:B:56:GLY:O	1:B:163:ARG:NH2	2.49	0.45
1:A:79:VAL:HB	1:A:159:LEU:HD23	1.99	0.45
1:B:359:PRO:O	1:B:362:CYS:HB3	2.17	0.45
1:A:333:PRO:C	1:A:335:GLY:N	2.70	0.45
1:A:183:THR:O	1:A:187:VAL:HG23	2.17	0.45
1:A:57:PRO:HD2	1:A:60:MET:HE2	1.97	0.45
1:B:297:LEU:HD22	1:B:308:PHE:CD1	2.52	0.45
1:A:109:GLN:O	1:A:111:GLU:N	2.50	0.45
1:B:159:LEU:HD11	1:B:361:ILE:CG2	2.47	0.45
1:B:58:HIS:HB3	3:B:2:PE2:H3'1	1.99	0.45
1:A:339:ALA:O	1:A:343:LEU:HG	2.17	0.45
1:B:219:LYS:O	1:B:220:ARG:CB	2.65	0.45
1:B:235:ILE:HA	1:B:235:ILE:HD12	1.81	0.44
1:A:283:HIS:HB3	1:A:286:ASP:OD2	2.17	0.44
1:B:102:THR:O	1:B:105:HIS:HB3	2.17	0.44
1:B:259:TRP:O	1:B:262:LEU:HB2	2.18	0.44
1:A:78:ILE:CG1	1:A:158:THR:HB	2.42	0.44
1:B:186:ALA:O	1:B:189:ALA:HB3	2.17	0.44
1:B:80:TYR:O	1:B:82:PRO:HD3	2.18	0.44

Continued on next page...

Continued from previous page...

Atom-1	Atom-2	Interatomic distance (Å)	Clash overlap (Å)
1:B:67:GLN:O	1:B:70:VAL:N	2.50	0.44
1:B:164:HIS:O	1:B:165:PRO:C	2.56	0.44
1:B:308:PHE:O	1:B:309:ALA:C	2.56	0.44
1:B:248:TYR:CZ	1:B:253:GLY:HA3	2.53	0.44
1:A:48:THR:HA	1:A:350:THR:O	2.17	0.43
1:B:148:GLY:O	1:B:152:ALA:N	2.50	0.43
1:B:205:LEU:HB2	1:B:326:ILE:HD13	1.99	0.43
1:B:232:LEU:HA	1:B:232:LEU:HD23	1.82	0.43
1:A:210:GLU:O	1:A:214:ILE:HG13	2.18	0.43
1:B:101:TYR:CD2	1:B:225:GLU:HA	2.53	0.43
1:B:140:ALA:HB3	1:B:141:PRO:HD3	2.00	0.43
1:B:208:LEU:HD12	1:B:209:PRO:CD	2.47	0.43
1:A:217:LEU:HD12	1:A:232:LEU:CD2	2.49	0.43
1:B:146:GLU:HG2	1:B:350:THR:HG22	2.01	0.43
1:B:124:ALA:O	1:B:128:MET:HG2	2.19	0.43
1:B:234:ALA:O	1:B:237:ARG:HB3	2.19	0.43
1:A:221:GLN:HE22	1:A:222:ARG:HH12	1.66	0.42
1:B:101:TYR:CZ	1:B:225:GLU:HG3	2.54	0.42
1:B:210:GLU:HG3	1:B:214:ILE:CD1	2.46	0.42
1:A:219:LYS:HG2	1:A:220:ARG:H	1.84	0.42
1:A:57:PRO:HD2	1:A:60:MET:HE1	2.00	0.42
1:A:126:ILE:HD13	1:A:190:PHE:CE1	2.52	0.42
1:A:130:MET:HA	4:B:630:HOH:O	2.19	0.42
1:A:257:GLU:HG3	1:A:258:ASP:OD1	2.19	0.42
1:B:319:LEU:HD23	1:B:322:MET:HE3	2.02	0.42
1:B:77:ASP:O	1:B:157:LEU:HD12	2.18	0.42
1:A:188:LEU:HA	1:A:188:LEU:HD23	1.90	0.42
1:B:295:PRO:HG2	1:B:296:GLU:OE1	2.20	0.42
1:A:62:LYS:HA	1:A:329:TYR:OH	2.20	0.42
1:B:153:PRO:HA	1:B:154:PRO:HA	1.80	0.42
1:B:213:HIS:CB	1:B:236:ARG:HH21	2.33	0.42
1:A:62:LYS:O	1:A:66:THR:HG22	2.19	0.42
1:B:305:TYR:HB2	1:B:308:PHE:CD2	2.55	0.42
1:A:200:GLY:HA3	1:A:350:THR:CG2	2.50	0.42
1:A:299:ALA:O	1:A:302:GLY:N	2.47	0.42
1:A:79:VAL:CG1	1:A:80:TYR:H	2.33	0.42
1:B:213:HIS:CD2	1:B:217:LEU:CD2	3.01	0.42
1:B:51:ARG:NH1	1:B:53:TYR:OH	2.53	0.42
1:B:89:ARG:O	1:B:94:SER:HA	2.20	0.42
1:A:311:ALA:O	1:A:314:VAL:HB	2.20	0.42
1:A:79:VAL:CG1	1:A:80:TYR:N	2.82	0.42

Continued on next page...

Continued from previous page...

Atom-1	Atom-2	Interatomic distance (Å)	Clash overlap (Å)
1:A:262:LEU:HD21	1:A:284:ILE:HG23	2.02	0.41
1:B:296:GLU:OE1	1:B:296:GLU:N	2.52	0.41
1:A:200:GLY:HA3	1:A:350:THR:HG23	2.02	0.41
1:A:89:ARG:HA	1:A:95:GLU:HA	2.01	0.41
1:B:193:LEU:HA	1:B:193:LEU:HD23	1.58	0.41
1:A:213:HIS:CE1	1:A:232:LEU:CD2	3.02	0.41
1:A:123:SER:HB3	1:B:122:THR:HG23	2.03	0.41
1:B:65:THR:HG22	1:B:336:CYS:HB2	2.02	0.41
1:B:217:LEU:HA	1:B:217:LEU:HD13	1.75	0.41
1:A:217:LEU:O	1:A:221:GLN:HG3	2.20	0.41
1:A:262:LEU:O	1:A:293:ARG:NH1	2.54	0.41
1:B:154:PRO:HB2	1:B:155:PRO:CD	2.51	0.41
1:B:52:VAL:HG22	1:B:347:MET:SD	2.61	0.41
1:B:112:ILE:HG12	1:B:116:ASP:CB	2.51	0.41
1:A:142:HIS:CE1	4:A:515:HOH:O	2.74	0.40
1:A:255:TRP:O	1:A:259:TRP:HB2	2.21	0.40
1:A:325:PHE:CD1	1:A:325:PHE:N	2.89	0.40
1:B:240:GLY:O	1:B:241:LEU:C	2.59	0.40
1:B:255:TRP:HB2	1:B:284:ILE:HD11	2.01	0.40
1:B:203:ILE:O	1:B:324:VAL:HA	2.21	0.40
1:B:122:THR:HG23	1:B:123:SER:N	2.37	0.40
1:B:297:LEU:HD22	1:B:308:PHE:CE1	2.56	0.40
1:B:69:LEU:HD22	1:B:340:LEU:HD21	2.04	0.40
1:B:85:MET:CE	1:B:88:TRP:HB2	2.52	0.40

There are no symmetry-related clashes.

5.3 Torsion angles [i](#)

5.3.1 Protein backbone [i](#)

In the following table, the Percentiles column shows the percent Ramachandran outliers of the chain as a percentile score with respect to all X-ray entries followed by that with respect to entries of similar resolution.

The Analysed column shows the number of residues for which the backbone conformation was analysed, and the total number of residues.

Mol	Chain	Analysed	Favoured	Allowed	Outliers	Percentiles
1	A	301/331 (91%)	260 (86%)	31 (10%)	10 (3%)	4 3

Continued on next page...

Continued from previous page...

Mol	Chain	Analysed	Favoured	Allowed	Outliers	Percentiles	
1	B	303/331 (92%)	267 (88%)	31 (10%)	5 (2%)	9	10
All	All	604/662 (91%)	527 (87%)	62 (10%)	15 (2%)	5	5

All (15) Ramachandran outliers are listed below:

Mol	Chain	Res	Type
1	A	222	ARG
1	B	149	SER
1	B	220	ARG
1	A	110	GLY
1	A	220	ARG
1	A	259	TRP
1	A	344	THR
1	A	163	ARG
1	A	333	PRO
1	B	94	SER
1	B	221	GLN
1	A	140	ALA
1	B	154	PRO
1	A	153	PRO
1	A	82	PRO

5.3.2 Protein sidechains [i](#)

In the following table, the Percentiles column shows the percent sidechain outliers of the chain as a percentile score with respect to all X-ray entries followed by that with respect to entries of similar resolution.

The Analysed column shows the number of residues for which the sidechain conformation was analysed, and the total number of residues.

Mol	Chain	Analysed	Rotameric	Outliers	Percentiles	
1	A	245/264 (93%)	224 (91%)	21 (9%)	10	14
1	B	246/264 (93%)	217 (88%)	29 (12%)	5	6
All	All	491/528 (93%)	441 (90%)	50 (10%)	7	9

All (50) residues with a non-rotameric sidechain are listed below:

Mol	Chain	Res	Type
1	A	55	ASP

Continued on next page...

Continued from previous page...

Mol	Chain	Res	Type
1	A	78	ILE
1	A	107	LEU
1	A	130	MET
1	A	134	VAL
1	A	177	TYR
1	A	178	LEU
1	A	196	PRO
1	A	197	THR
1	A	215	ASP
1	A	217	LEU
1	A	232	LEU
1	A	293	ARG
1	A	300	PRO
1	A	307	VAL
1	A	320	ARG
1	A	337	ARG
1	A	338	ASP
1	A	362	CYS
1	A	363	ASP
1	A	368	PHE
1	B	50	LEU
1	B	72	LEU
1	B	85	MET
1	B	107	LEU
1	B	109	GLN
1	B	119	VAL
1	B	130	MET
1	B	134	VAL
1	B	138	VAL
1	B	154	PRO
1	B	165	PRO
1	B	178	LEU
1	B	209	PRO
1	B	212	ARG
1	B	217	LEU
1	B	220	ARG
1	B	221	GLN
1	B	222	ARG
1	B	226	ARG
1	B	232	LEU
1	B	247	ARG
1	B	249	LEU

Continued on next page...

Continued from previous page...

Mol	Chain	Res	Type
1	B	262	LEU
1	B	307	VAL
1	B	341	LEU
1	B	349	GLN
1	B	352	VAL
1	B	354	THR
1	B	360	THR

Some sidechains can be flipped to improve hydrogen bonding and reduce clashes. All (5) such sidechains are listed below:

Mol	Chain	Res	Type
1	A	67	GLN
1	A	99	ASN
1	A	142	HIS
1	A	351	HIS
1	B	142	HIS

5.3.3 RNA [i](#)

There are no RNA molecules in this entry.

5.4 Non-standard residues in protein, DNA, RNA chains [i](#)

There are no non-standard protein/DNA/RNA residues in this entry.

5.5 Carbohydrates [i](#)

There are no carbohydrates in this entry.

5.6 Ligand geometry [i](#)

4 ligands are modelled in this entry.

In the following table, the Counts columns list the number of bonds (or angles) for which Mogul statistics could be retrieved, the number of bonds (or angles) that are observed in the model and the number of bonds (or angles) that are defined in the Chemical Component Dictionary. The Link column lists molecule types, if any, to which the group is linked. The Z score for a bond length (or angle) is the number of standard deviations the observed value is removed from the expected value. A bond length (or angle) with $|Z| > 2$ is considered an outlier worth inspection. RMSZ is the root-mean-square of all Z scores of the bond lengths (or angles).

Mol	Type	Chain	Res	Link	Bond lengths			Bond angles		
					Counts	RMSZ	# Z > 2	Counts	RMSZ	# Z > 2
2	SO4	A	3	-	4,4,4	0.61	0	6,6,6	1.20	1 (16%)
3	PE2	B	2	-	15,19,19	1.43	4 (26%)	16,26,26	4.26	5 (31%)
3	PE2	A	1	-	15,19,19	2.03	4 (26%)	16,26,26	4.19	7 (43%)
2	SO4	B	4	-	4,4,4	0.71	0	6,6,6	1.35	1 (16%)

In the following table, the Chirals column lists the number of chiral outliers, the number of chiral centers analysed, the number of these observed in the model and the number defined in the Chemical Component Dictionary. Similar counts are reported in the Torsion and Rings columns. '-' means no outliers of that kind were identified.

Mol	Type	Chain	Res	Link	Chirals	Torsions	Rings
3	PE2	B	2	-	-	1/9/9/9	0/2/2/2
3	PE2	A	1	-	-	6/9/9/9	0/2/2/2

All (8) bond length outliers are listed below:

Mol	Chain	Res	Type	Atoms	Z	Observed(Å)	Ideal(Å)
3	A	1	PE2	C6-N1	4.45	1.40	1.33
3	A	1	PE2	C2-N1	3.89	1.42	1.35
3	A	1	PE2	C8-N7	-3.42	1.28	1.34
3	B	2	PE2	C4-N3	-2.91	1.31	1.35
3	B	2	PE2	C8-N7	-2.56	1.30	1.34
3	A	1	PE2	C4-N3	2.47	1.39	1.35
3	B	2	PE2	C6-N1	2.19	1.36	1.33
3	B	2	PE2	C6-C5	2.02	1.44	1.41

All (14) bond angle outliers are listed below:

Mol	Chain	Res	Type	Atoms	Z	Observed(°)	Ideal(°)
3	B	2	PE2	C5-C6-N1	-12.89	105.80	123.43
3	A	1	PE2	C12-C1'-N9	9.28	130.78	112.13
3	A	1	PE2	C5-C6-N1	-9.18	110.88	123.43
3	B	2	PE2	C6-N1-C2	7.26	127.47	115.93
3	B	2	PE2	C2-N3-C4	-6.21	108.27	115.36
3	A	1	PE2	C1'-C12-C2'	-6.17	100.99	115.07
3	A	1	PE2	C6-N1-C2	5.98	125.43	115.93
3	A	1	PE2	C2-N3-C4	-4.05	110.73	115.36
3	B	2	PE2	C12-C1'-N9	-4.03	104.03	112.13
3	A	1	PE2	N3-C2-N1	-2.55	123.83	127.22
3	B	2	PE2	N2-C2-N3	-2.47	113.77	117.79
2	A	3	SO4	O4-S-O2	2.40	121.83	109.31

Continued on next page...

Continued from previous page...

Mol	Chain	Res	Type	Atoms	Z	Observed(°)	Ideal(°)
3	A	1	PE2	O4'-C4'-C2'	-2.34	99.67	112.33
2	B	4	SO4	O4-S-O3	2.26	118.73	109.06

There are no chirality outliers.

All (7) torsion outliers are listed below:

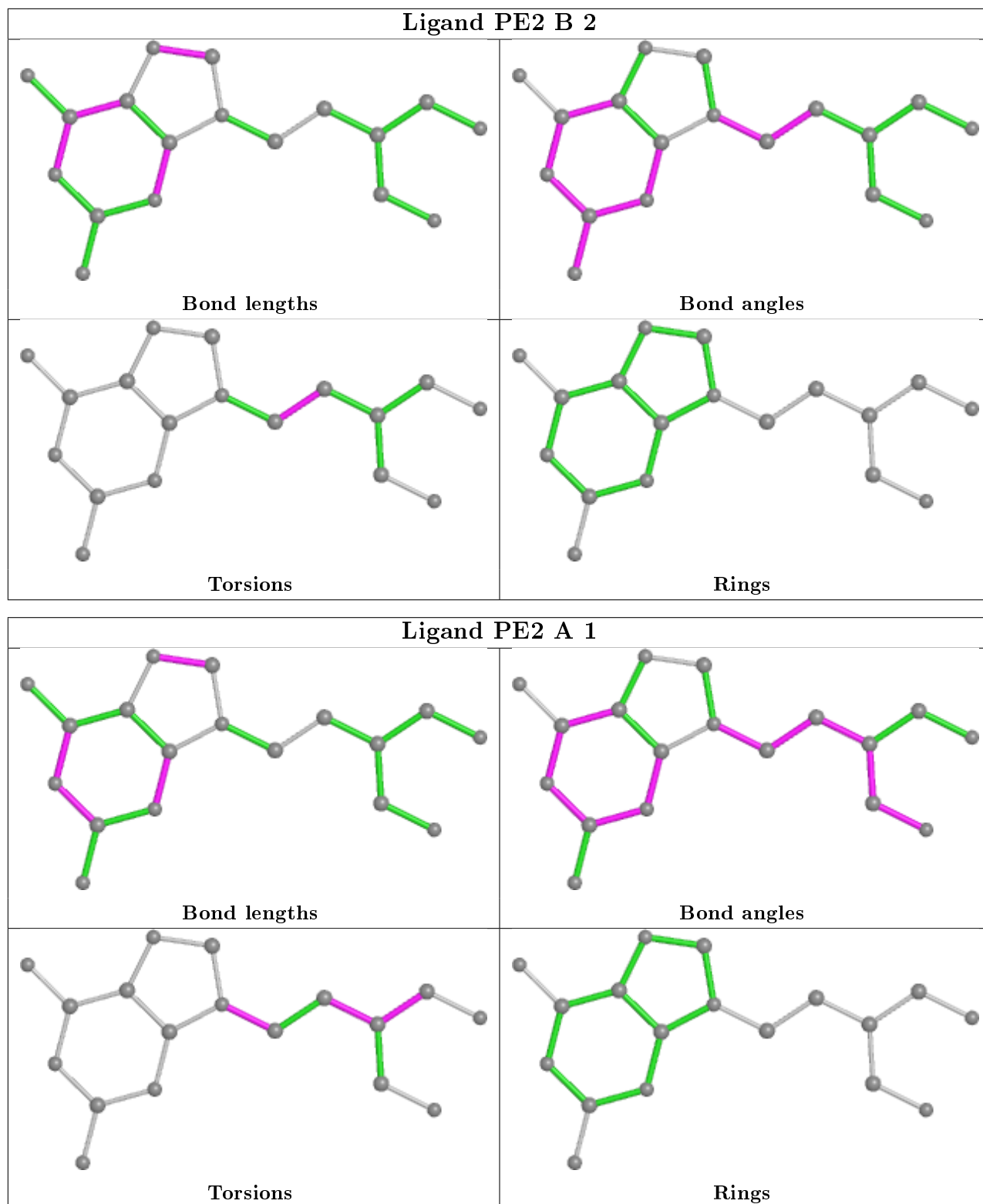
Mol	Chain	Res	Type	Atoms
3	A	1	PE2	C12-C2'-C3'-O3'
3	A	1	PE2	C12-C1'-N9-C4
3	A	1	PE2	C12-C1'-N9-C8
3	B	2	PE2	N9-C1'-C12-C2'
3	A	1	PE2	C1'-C12-C2'-C3'
3	A	1	PE2	C4'-C2'-C3'-O3'
3	A	1	PE2	C1'-C12-C2'-C4'

There are no ring outliers.

1 monomer is involved in 5 short contacts:

Mol	Chain	Res	Type	Clashes	Symm-Clashes
3	B	2	PE2	5	0

The following is a two-dimensional graphical depiction of Mogul quality analysis of bond lengths, bond angles, torsion angles, and ring geometry for all instances of the Ligand of Interest. In addition, ligands with molecular weight > 250 and outliers as shown on the validation Tables will also be included. For torsion angles, if less than 5% of the Mogul distribution of torsion angles is within 10 degrees of the torsion angle in question, then that torsion angle is considered an outlier. Any bond that is central to one or more torsion angles identified as an outlier by Mogul will be highlighted in the graph. For rings, the root-mean-square deviation (RMSD) between the ring in question and similar rings identified by Mogul is calculated over all ring torsion angles. If the average RMSD is greater than 60 degrees and the minimal RMSD between the ring in question and any Mogul-identified rings is also greater than 60 degrees, then that ring is considered an outlier. The outliers are highlighted in purple. The color gray indicates Mogul did not find sufficient equivalents in the CSD to analyse the geometry.



5.7 Other polymers [\(i\)](#)

There are no such residues in this entry.

5.8 Polymer linkage issues

There are no chain breaks in this entry.

6 Fit of model and data

6.1 Protein, DNA and RNA chains

Unable to reproduce the depositors R factor - this section is therefore empty.

6.2 Non-standard residues in protein, DNA, RNA chains

Unable to reproduce the depositors R factor - this section is therefore empty.

6.3 Carbohydrates

Unable to reproduce the depositors R factor - this section is therefore empty.

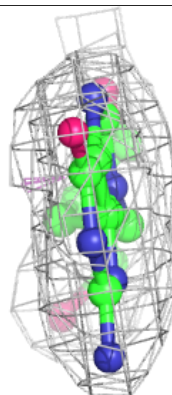
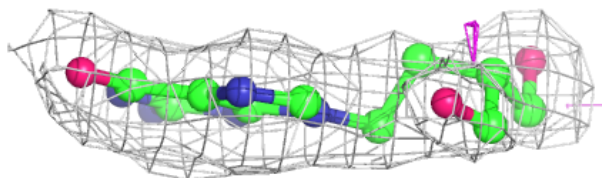
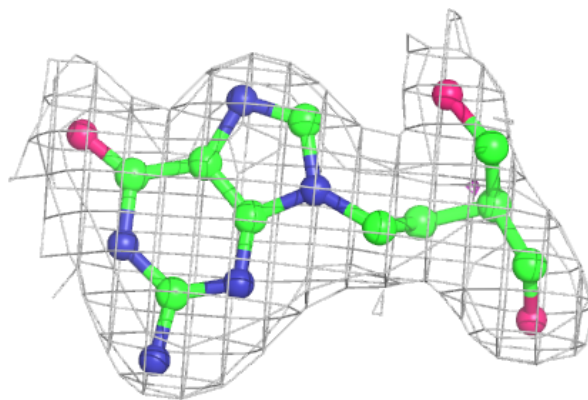
6.4 Ligands

Unable to reproduce the depositors R factor - this section is therefore empty.

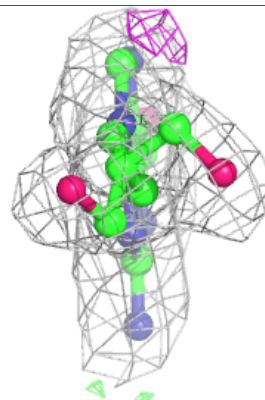
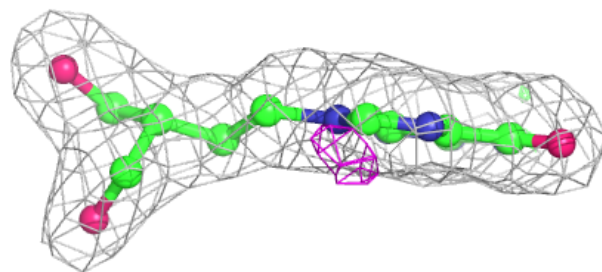
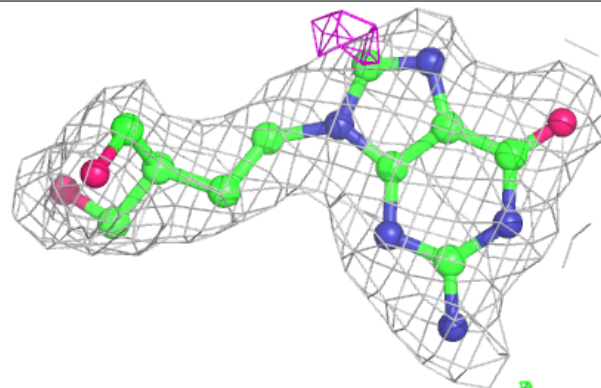
The following is a graphical depiction of the model fit to experimental electron density of all instances of the Ligand of Interest. In addition, ligands with molecular weight > 250 and outliers as shown on the geometry validation Tables will also be included. Each fit is shown from different orientation to approximate a three-dimensional view.

Electron density around PE2 B 2:

$2mF_o-DF_c$ (at 0.7 rmsd) in gray
 mF_o-DF_c (at 3 rmsd) in purple (negative)
and green (positive)

**Electron density around PE2 A 1:**

$2mF_o-DF_c$ (at 0.7 rmsd) in gray
 mF_o-DF_c (at 3 rmsd) in purple (negative)
and green (positive)



6.5 Other polymers

Unable to reproduce the depositors R factor - this section is therefore empty.