



Full wwPDB X-ray Structure Validation Report ⓘ

Nov 17, 2024 – 12:36 PM EST

PDB ID : 4KJG
Title : Structure of Rat Intestinal Alkaline Phosphatase expressed in insect cell
Authors : Ghosh, K.; Anumula, R.K.; Laksmiah, B.K.
Deposited on : 2013-05-03
Resolution : 2.38 Å(reported)

This is a Full wwPDB X-ray Structure Validation Report for a publicly released PDB entry.

We welcome your comments at validation@mail.wwpdb.org

A user guide is available at

<https://www.wwpdb.org/validation/2017/XrayValidationReportHelp>

with specific help available everywhere you see the ⓘ symbol.

The types of validation reports are described at

<http://www.wwpdb.org/validation/2017/FAQs#types>.

The following versions of software and data (see [references ⓘ](#)) were used in the production of this report:

MolProbity : 4.02b-467
Mogul : 2022.3.0, CSD as543be (2022)
Xtriage (Phenix) : 1.20.1
EDS : 3.0
Percentile statistics : 20231227.v01 (using entries in the PDB archive December 27th 2023)
CCP4 : 9.0.003 (Gargrove)
Density-Fitness : 1.0.11
Ideal geometry (proteins) : Engh & Huber (2001)
Ideal geometry (DNA, RNA) : Parkinson et al. (1996)
Validation Pipeline (wwPDB-VP) : 2.39

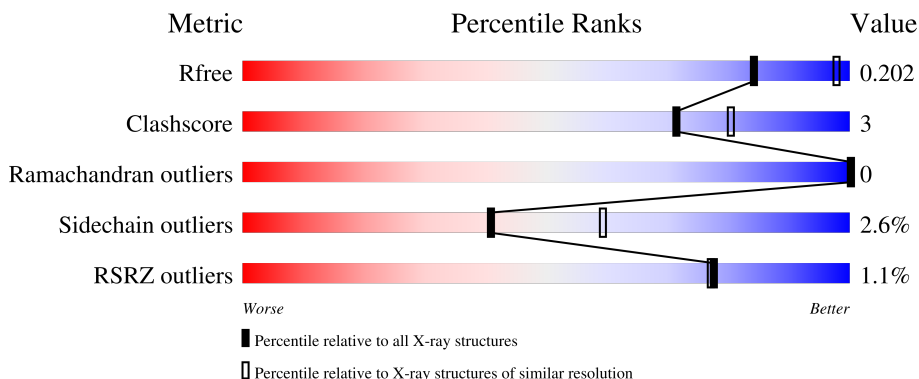
1 Overall quality at a glance i

The following experimental techniques were used to determine the structure:

X-RAY DIFFRACTION

The reported resolution of this entry is 2.38 Å.

Percentile scores (ranging between 0-100) for global validation metrics of the entry are shown in the following graphic. The table shows the number of entries on which the scores are based.



Metric	Whole archive (#Entries)	Similar resolution (#Entries, resolution range(Å))
R_{free}	164625	6699 (2.40-2.36)
Clashscore	180529	7414 (2.40-2.36)
Ramachandran outliers	177936	7337 (2.40-2.36)
Sidechain outliers	177891	7338 (2.40-2.36)
RSRZ outliers	164620	6699 (2.40-2.36)

The table below summarises the geometric issues observed across the polymeric chains and their fit to the electron density. The red, orange, yellow and green segments of the lower bar indicate the fraction of residues that contain outliers for ≥ 3 , 2, 1 and 0 types of geometric quality criteria respectively. A grey segment represents the fraction of residues that are not modelled. The numeric value for each fraction is indicated below the corresponding segment, with a dot representing fractions $\leq 5\%$. The upper red bar (where present) indicates the fraction of residues that have poor fit to the electron density. The numeric value is given above the bar.

Mol	Chain	Length	Quality of chain
1	A	488	 91% 7%
1	B	488	 90% 8%
2	C	4	 50% 50%
3	D	3	 33% 67%

The following table lists non-polymeric compounds, carbohydrate monomers and non-standard

residues in protein, DNA, RNA chains that are outliers for geometric or electron-density-fit criteria:

Mol	Type	Chain	Res	Chirality	Geometry	Clashes	Electron density
6	4NP	A	1006	-	X	-	-
6	4NP	B	1006	-	X	-	-

2 Entry composition [i](#)

There are 8 unique types of molecules in this entry. The entry contains 7889 atoms, of which 0 are hydrogens and 0 are deuteriums.

In the tables below, the ZeroOcc column contains the number of atoms modelled with zero occupancy, the AltConf column contains the number of residues with at least one atom in alternate conformation and the Trace column contains the number of residues modelled with at most 2 atoms.

- Molecule 1 is a protein called Intestinal-type alkaline phosphatase 1.

Mol	Chain	Residues	Atoms					ZeroOcc	AltConf	Trace
			Total	C	N	O	S			
1	A	486	3686	2312	644	713	17	0	0	0
1	B	484	3657	2297	638	705	17	0	0	0

There are 12 discrepancies between the modelled and reference sequences:

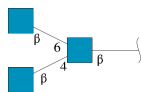
Chain	Residue	Modelled	Actual	Comment	Reference
A	483	HIS	-	expression tag	UNP P15693
A	484	HIS	-	expression tag	UNP P15693
A	485	HIS	-	expression tag	UNP P15693
A	486	HIS	-	expression tag	UNP P15693
A	487	HIS	-	expression tag	UNP P15693
A	488	HIS	-	expression tag	UNP P15693
B	483	HIS	-	expression tag	UNP P15693
B	484	HIS	-	expression tag	UNP P15693
B	485	HIS	-	expression tag	UNP P15693
B	486	HIS	-	expression tag	UNP P15693
B	487	HIS	-	expression tag	UNP P15693
B	488	HIS	-	expression tag	UNP P15693

- Molecule 2 is an oligosaccharide called 2-acetamido-2-deoxy-beta-D-glucopyranose-(1-6)-2-acetamido-2-deoxy-beta-D-glucopyranose-(1-4)-2-acetamido-2-deoxy-beta-D-glucopyranose-(1-4)-2-acetamido-2-deoxy-beta-D-glucopyranose.



Mol	Chain	Residues	Atoms				ZeroOcc	AltConf	Trace
			Total	C	N	O			
2	C	4	56	32	4	20	0	0	0

- Molecule 3 is an oligosaccharide called 2-acetamido-2-deoxy-beta-D-glucopyranose-(1-4)-[2-acetamido-2-deoxy-beta-D-glucopyranose-(1-6)]2-acetamido-2-deoxy-beta-D-glucopyranose.



Mol	Chain	Residues	Atoms				ZeroOcc	AltConf	Trace
			Total	C	N	O			
3	D	3	42	24	3	15	0	0	0

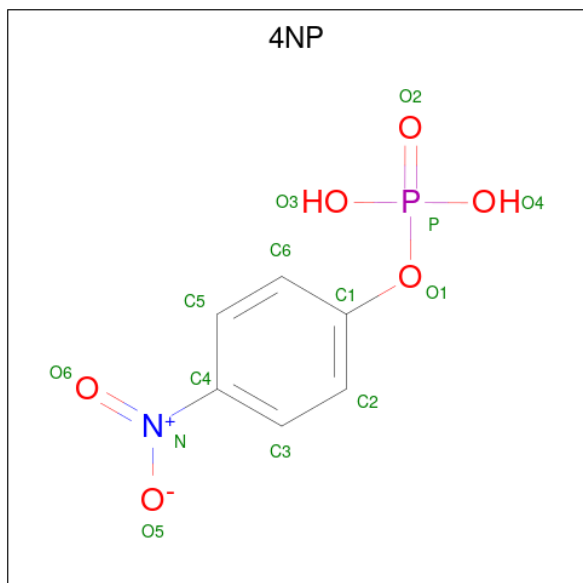
- Molecule 4 is ZINC ION (three-letter code: ZN) (formula: Zn).

Mol	Chain	Residues	Atoms		ZeroOcc	AltConf
			Total	Zn		
4	A	2	2	2	0	0
4	B	2	2	2	0	0

- Molecule 5 is MAGNESIUM ION (three-letter code: MG) (formula: Mg).

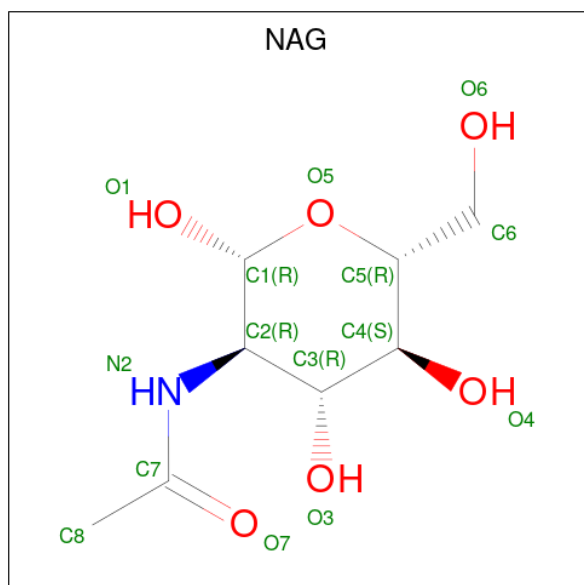
Mol	Chain	Residues	Atoms		ZeroOcc	AltConf
			Total	Mg		
5	A	3	3	3	0	0
5	B	3	3	3	0	0

- Molecule 6 is 4-NITROPHENYL PHOSPHATE (three-letter code: 4NP) (formula: C₆H₆NO₆P).



Mol	Chain	Residues	Atoms				ZeroOcc	AltConf
6	A	1	Total	C	N	O	0	0
			10	6	1	3		
6	B	1	Total	C	N	O	0	0
			10	6	1	3		

- Molecule 7 is 2-acetamido-2-deoxy-beta-D-glucopyranose (three-letter code: NAG) (formula: $C_8H_{15}NO_6$).



Mol	Chain	Residues	Atoms				ZeroOcc	AltConf
7	A	1	Total	C	N	O	0	0
			14	8	1	5		
7	B	1	Total	C	N	O	0	0
			14	8	1	5		

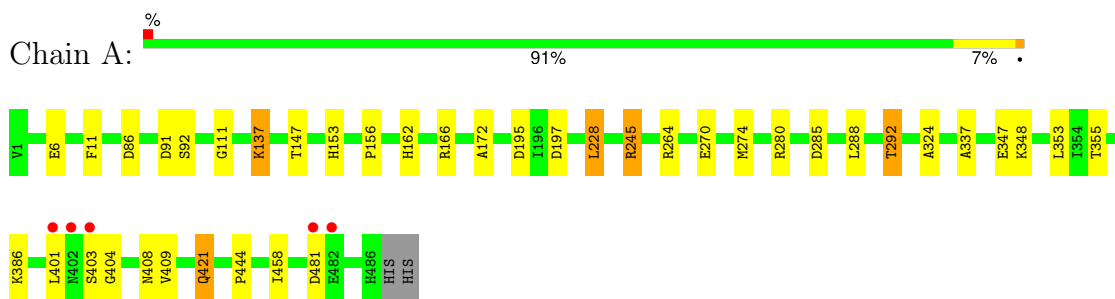
- Molecule 8 is water.

Mol	Chain	Residues	Atoms		ZeroOcc	AltConf
8	A	192	Total	O	0	0
			192	192		
8	B	198	Total	O	0	0
			198	198		

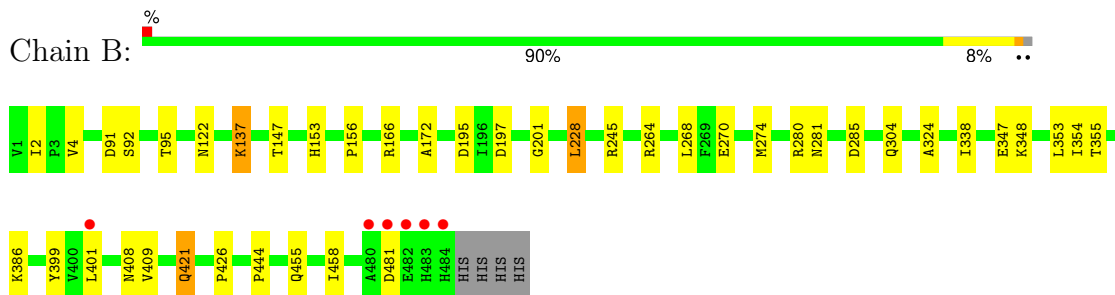
3 Residue-property plots [i](#)

These plots are drawn for all protein, RNA, DNA and oligosaccharide chains in the entry. The first graphic for a chain summarises the proportions of the various outlier classes displayed in the second graphic. The second graphic shows the sequence view annotated by issues in geometry and electron density. Residues are color-coded according to the number of geometric quality criteria for which they contain at least one outlier: green = 0, yellow = 1, orange = 2 and red = 3 or more. A red dot above a residue indicates a poor fit to the electron density ($RSRZ > 2$). Stretches of 2 or more consecutive residues without any outlier are shown as a green connector. Residues present in the sample, but not in the model, are shown in grey.

- Molecule 1: Intestinal-type alkaline phosphatase 1



- Molecule 1: Intestinal-type alkaline phosphatase 1



- Molecule 2: 2-acetamido-2-deoxy-beta-D-glucopyranose-(1-6)-2-acetamido-2-deoxy-beta-D-glucopyranose-(1-4)-2-acetamido-2-deoxy-beta-D-glucopyranose-(1-4)-2-acetamido-2-deoxy-beta-D-glucopyranose



- Molecule 3: 2-acetamido-2-deoxy-beta-D-glucopyranose-(1-4)-[2-acetamido-2-deoxy-beta-D-glucopyranose-(1-6)]2-acetamido-2-deoxy-beta-D-glucopyranose



4 Data and refinement statistics

Property	Value	Source
Space group	P 21 21 21	Depositor
Cell constants a, b, c, α , β , γ	90.31Å 167.17Å 71.84Å 90.00° 90.00° 90.00°	Depositor
Resolution (Å)	47.42 – 2.38 47.42 – 2.38	Depositor EDS
% Data completeness (in resolution range)	99.0 (47.42-2.38) 99.1 (47.42-2.38)	Depositor EDS
R_{merge}	0.17	Depositor
R_{sym}	(Not available)	Depositor
$\langle I/\sigma(I) \rangle$ ¹	2.31 (at 2.39Å)	Xtrriage
Refinement program	BUSTER-TNT BUSTER 2.11.1, BUSTER 2.11.1	Depositor
R, R_{free}	0.164 , 0.204 0.163 , 0.202	Depositor DCC
R_{free} test set	2224 reflections (5.06%)	wwPDB-VP
Wilson B-factor (Å ²)	21.0	Xtrriage
Anisotropy	0.613	Xtrriage
Bulk solvent k_{sol} (e/Å ³), B_{sol} (Å ²)	0.39 , 42.6	EDS
L-test for twinning ²	$\langle L \rangle = 0.49$, $\langle L^2 \rangle = 0.32$	Xtrriage
Estimated twinning fraction	No twinning to report.	Xtrriage
F_o, F_c correlation	0.95	EDS
Total number of atoms	7889	wwPDB-VP
Average B, all atoms (Å ²)	23.0	wwPDB-VP

Xtrriage's analysis on translational NCS is as follows: *The largest off-origin peak in the Patterson function is 3.35% of the height of the origin peak. No significant pseudotranslation is detected.*

¹Intensities estimated from amplitudes.

²Theoretical values of $\langle |L| \rangle$, $\langle L^2 \rangle$ for acentric reflections are 0.5, 0.333 respectively for untwinned datasets, and 0.375, 0.2 for perfectly twinned datasets.

5 Model quality [i](#)

5.1 Standard geometry [i](#)

Bond lengths and bond angles in the following residue types are not validated in this section: MG, 4NP, NAG, ZN

The Z score for a bond length (or angle) is the number of standard deviations the observed value is removed from the expected value. A bond length (or angle) with $|Z| > 5$ is considered an outlier worth inspection. RMSZ is the root-mean-square of all Z scores of the bond lengths (or angles).

Mol	Chain	Bond lengths		Bond angles	
		RMSZ	# Z >5	RMSZ	# Z >5
1	A	0.49	0/3772	0.67	0/5133
1	B	0.49	0/3740	0.65	0/5087
All	All	0.49	0/7512	0.66	0/10220

There are no bond length outliers.

There are no bond angle outliers.

There are no chirality outliers.

There are no planarity outliers.

5.2 Too-close contacts [i](#)

In the following table, the Non-H and H(model) columns list the number of non-hydrogen atoms and hydrogen atoms in the chain respectively. The H(added) column lists the number of hydrogen atoms added and optimized by MolProbity. The Clashes column lists the number of clashes within the asymmetric unit, whereas Symm-Clashes lists symmetry-related clashes.

Mol	Chain	Non-H	H(model)	H(added)	Clashes	Symm-Clashes
1	A	3686	0	3536	22	0
1	B	3657	0	3532	24	0
2	C	56	0	49	1	0
3	D	42	0	37	4	0
4	A	2	0	0	0	0
4	B	2	0	0	0	0
5	A	3	0	0	0	0
5	B	3	0	0	0	0
6	A	10	0	4	1	0
6	B	10	0	4	1	0
7	A	14	0	13	0	0

Continued on next page...

Continued from previous page...

Mol	Chain	Non-H	H(model)	H(added)	Clashes	Symm-Clashes
7	B	14	0	13	1	0
8	A	192	0	0	1	0
8	B	198	0	0	0	0
All	All	7889	0	7188	46	0

The all-atom clashscore is defined as the number of clashes found per 1000 atoms (including hydrogen atoms). The all-atom clashscore for this structure is 3.

All (46) close contacts within the same asymmetric unit are listed below, sorted by their clash magnitude.

Atom-1	Atom-2	Interatomic distance (Å)	Clash overlap (Å)
1:B:281:ASN:CG	3:D:1:NAG:C1	2.40	0.88
3:D:2:NAG:H82	3:D:2:NAG:O3	1.90	0.70
1:B:386:LYS:HG3	7:B:1010:NAG:H82	1.76	0.68
1:A:353:LEU:HD12	1:A:458:ILE:HG23	1.83	0.61
1:B:280:ARG:HG3	1:B:285:ASP:HB2	1.83	0.60
1:B:353:LEU:HD12	1:B:458:ILE:HG23	1.84	0.59
1:B:281:ASN:OD1	3:D:1:NAG:C1	2.51	0.58
1:B:348:LYS:HD3	1:B:481:ASP:HA	1.86	0.58
1:A:404:GLY:O	1:B:401:LEU:HD21	2.04	0.57
1:A:280:ARG:HG3	1:A:285:ASP:HB2	1.87	0.56
1:B:92:SER:OG	6:B:1006:4NP:O5	2.24	0.56
1:A:172:ALA:HA	1:A:228:LEU:HD22	1.89	0.55
1:A:292:THR:HG21	1:A:337:ALA:HB1	1.88	0.54
1:B:172:ALA:HA	1:B:228:LEU:HD22	1.89	0.53
1:A:137:LYS:HD3	1:A:195:ASP:HB3	1.90	0.53
1:B:137:LYS:HD3	1:B:195:ASP:HB3	1.91	0.52
1:B:95:THR:HG22	1:B:455:GLN:HE22	1.74	0.52
1:A:111:GLY:O	1:A:162:HIS:HD2	1.93	0.51
1:B:197:ASP:HA	1:B:264:ARG:HG2	1.93	0.51
1:A:92:SER:OG	6:A:1006:4NP:O5	2.29	0.51
1:A:324:ALA:H	1:A:421:GLN:HE22	1.58	0.51
1:A:347:GLU:O	1:A:444:PRO:HD3	2.11	0.51
1:A:288:LEU:O	1:A:292:THR:HG23	2.11	0.50
1:A:197:ASP:HA	1:A:264:ARG:HG2	1.96	0.48
1:B:324:ALA:H	1:B:421:GLN:HE22	1.59	0.48
1:A:355:THR:HG21	1:A:458:ILE:HD13	1.95	0.48
1:B:355:THR:HG21	1:B:458:ILE:HD13	1.96	0.47
1:A:270:GLU:HG3	1:A:274:MET:HA	1.97	0.47
1:B:386:LYS:HG2	1:B:408:ASN:HB2	1.98	0.45
2:C:2:NAG:O3	2:C:4:NAG:H82	2.16	0.45

Continued on next page...

Continued from previous page...

Atom-1	Atom-2	Interatomic distance (Å)	Clash overlap (Å)
1:B:270:GLU:HG3	1:B:274:MET:HA	1.98	0.44
1:A:348:LYS:HD3	1:A:481:ASP:HA	1.99	0.44
1:B:201:GLY:O	1:B:268:LEU:HA	2.18	0.44
1:B:399:TYR:CD2	1:B:426:PRO:HB3	2.53	0.44
1:A:245:ARG:NH2	8:A:1246:HOH:O	2.51	0.43
1:A:386:LYS:HG2	1:A:408:ASN:HB2	2.00	0.43
1:B:421:GLN:NE2	1:B:421:GLN:H	2.17	0.43
1:B:281:ASN:ND2	3:D:1:NAG:C2	2.70	0.43
1:B:147:THR:HG21	1:B:156:PRO:HG3	1.99	0.43
1:A:401:LEU:O	1:A:403:SER:N	2.53	0.42
1:A:147:THR:HG21	1:A:156:PRO:HG3	2.01	0.42
1:A:421:GLN:H	1:A:421:GLN:NE2	2.16	0.42
1:A:86:ASP:HB3	1:B:2:ILE:HG12	2.01	0.41
1:B:338:ILE:HD13	1:B:354:ILE:HD13	2.01	0.41
1:B:347:GLU:O	1:B:444:PRO:HD3	2.20	0.41
1:A:6:GLU:HG2	1:A:11:PHE:CE2	2.56	0.40

There are no symmetry-related clashes.

5.3 Torsion angles [i](#)

5.3.1 Protein backbone [i](#)

In the following table, the Percentiles column shows the percent Ramachandran outliers of the chain as a percentile score with respect to all X-ray entries followed by that with respect to entries of similar resolution.

The Analysed column shows the number of residues for which the backbone conformation was analysed, and the total number of residues.

Mol	Chain	Analysed	Favoured	Allowed	Outliers	Percentiles	
1	A	484/488 (99%)	472 (98%)	12 (2%)	0	100	100
1	B	482/488 (99%)	473 (98%)	9 (2%)	0	100	100
All	All	966/976 (99%)	945 (98%)	21 (2%)	0	100	100

There are no Ramachandran outliers to report.

5.3.2 Protein sidechains [i](#)

In the following table, the Percentiles column shows the percent sidechain outliers of the chain as a percentile score with respect to all X-ray entries followed by that with respect to entries of similar resolution.

The Analysed column shows the number of residues for which the sidechain conformation was analysed, and the total number of residues.

Mol	Chain	Analysed	Rotameric	Outliers	Percentiles
1	A	385/394 (98%)	376 (98%)	9 (2%)	45 64
1	B	382/394 (97%)	371 (97%)	11 (3%)	37 55
All	All	767/788 (97%)	747 (97%)	20 (3%)	41 59

All (20) residues with a non-rotameric sidechain are listed below:

Mol	Chain	Res	Type
1	A	91	ASP
1	A	137	LYS
1	A	153	HIS
1	A	166	ARG
1	A	228	LEU
1	A	245	ARG
1	A	292	THR
1	A	409	VAL
1	A	421	GLN
1	B	4	VAL
1	B	91	ASP
1	B	122	ASN
1	B	137	LYS
1	B	153	HIS
1	B	166	ARG
1	B	228	LEU
1	B	245	ARG
1	B	304	GLN
1	B	409	VAL
1	B	421	GLN

Sometimes sidechains can be flipped to improve hydrogen bonding and reduce clashes. All (9) such sidechains are listed below:

Mol	Chain	Res	Type
1	A	162	HIS
1	A	381	ASN

Continued on next page...

Continued from previous page...

Mol	Chain	Res	Type
1	A	383	GLN
1	A	421	GLN
1	B	242	GLN
1	B	279	ASN
1	B	381	ASN
1	B	421	GLN
1	B	455	GLN

5.3.3 RNA [i](#)

There are no RNA molecules in this entry.

5.4 Non-standard residues in protein, DNA, RNA chains [i](#)

There are no non-standard protein/DNA/RNA residues in this entry.

5.5 Carbohydrates [i](#)

7 monosaccharides are modelled in this entry.

In the following table, the Counts columns list the number of bonds (or angles) for which Mogul statistics could be retrieved, the number of bonds (or angles) that are observed in the model and the number of bonds (or angles) that are defined in the Chemical Component Dictionary. The Link column lists molecule types, if any, to which the group is linked. The Z score for a bond length (or angle) is the number of standard deviations the observed value is removed from the expected value. A bond length (or angle) with $|Z| > 2$ is considered an outlier worth inspection. RMSZ is the root-mean-square of all Z scores of the bond lengths (or angles).

Mol	Type	Chain	Res	Link	Bond lengths			Bond angles		
					Counts	RMSZ	# $ Z > 2$	Counts	RMSZ	# $ Z > 2$
2	NAG	C	1	1,2	14,14,15	0.75	0	17,19,21	1.22	1 (5%)
2	NAG	C	2	2	14,14,15	0.76	0	17,19,21	2.83	7 (41%)
2	NAG	C	3	2	14,14,15	1.45	2 (14%)	17,19,21	5.76	7 (41%)
2	NAG	C	4	2	14,14,15	1.03	0	17,19,21	2.87	6 (35%)
3	NAG	D	1	1,3	14,14,15	0.77	0	17,19,21	2.18	6 (35%)
3	NAG	D	2	3	14,14,15	0.96	1 (7%)	17,19,21	2.14	5 (29%)
3	NAG	D	3	3	14,14,15	1.06	1 (7%)	17,19,21	4.05	9 (52%)

In the following table, the Chirals column lists the number of chiral outliers, the number of chiral centers analysed, the number of these observed in the model and the number defined in the

Chemical Component Dictionary. Similar counts are reported in the Torsion and Rings columns. '-' means no outliers of that kind were identified.

Mol	Type	Chain	Res	Link	Chirals	Torsions	Rings
2	NAG	C	1	1,2	-	2/6/23/26	0/1/1/1
2	NAG	C	2	2	-	1/6/23/26	0/1/1/1
2	NAG	C	3	2	-	5/6/23/26	0/1/1/1
2	NAG	C	4	2	-	2/6/23/26	0/1/1/1
3	NAG	D	1	1,3	-	0/6/23/26	0/1/1/1
3	NAG	D	2	3	-	2/6/23/26	0/1/1/1
3	NAG	D	3	3	-	3/6/23/26	0/1/1/1

All (4) bond length outliers are listed below:

Mol	Chain	Res	Type	Atoms	Z	Observed(Å)	Ideal(Å)
2	C	3	NAG	C1-C2	4.32	1.58	1.52
3	D	3	NAG	C1-C2	2.47	1.55	1.52
2	C	3	NAG	C2-N2	2.14	1.49	1.46
3	D	2	NAG	C1-C2	2.09	1.55	1.52

All (41) bond angle outliers are listed below:

Mol	Chain	Res	Type	Atoms	Z	Observed(°)	Ideal(°)
2	C	3	NAG	C2-N2-C7	16.17	144.57	122.90
2	C	3	NAG	C1-C2-N2	13.72	132.05	110.43
3	D	3	NAG	C2-N2-C7	10.62	137.13	122.90
2	C	2	NAG	C1-O5-C5	9.14	124.44	112.19
2	C	3	NAG	C1-O5-C5	8.61	123.72	112.19
2	C	4	NAG	C2-N2-C7	7.16	132.50	122.90
3	D	3	NAG	C1-C2-N2	7.01	121.48	110.43
3	D	3	NAG	C1-O5-C5	6.48	120.87	112.19
2	C	4	NAG	O3-C3-C2	4.94	119.67	109.40
3	D	2	NAG	C2-N2-C7	4.52	128.95	122.90
2	C	3	NAG	C8-C7-N2	4.45	123.50	116.12
3	D	3	NAG	C4-C3-C2	4.43	117.51	111.02
3	D	3	NAG	O5-C1-C2	4.30	117.94	111.29
2	C	4	NAG	O7-C7-N2	4.22	129.44	121.98
3	D	2	NAG	C8-C7-N2	4.18	123.05	116.12
3	D	1	NAG	C4-C3-C2	4.12	117.06	111.02
3	D	1	NAG	O4-C4-C3	-4.08	100.77	110.38
3	D	1	NAG	C2-N2-C7	-3.88	117.70	122.90
2	C	2	NAG	O5-C5-C4	3.79	120.04	110.83
2	C	4	NAG	O7-C7-C8	-3.67	115.52	122.05

Continued on next page...

Continued from previous page...

Mol	Chain	Res	Type	Atoms	Z	Observed(°)	Ideal(°)
3	D	3	NAG	C3-C4-C5	3.55	116.67	110.23
3	D	2	NAG	C1-C2-N2	3.37	115.75	110.43
2	C	4	NAG	C1-O5-C5	3.27	116.58	112.19
3	D	1	NAG	O5-C1-C2	-3.23	106.29	111.29
2	C	4	NAG	C3-C4-C5	3.06	115.77	110.23
3	D	2	NAG	O3-C3-C2	2.91	115.44	109.40
2	C	1	NAG	C1-C2-N2	2.85	114.93	110.43
3	D	2	NAG	O7-C7-C8	-2.79	117.09	122.05
3	D	3	NAG	O5-C5-C4	2.71	117.43	110.83
2	C	2	NAG	C2-N2-C7	-2.66	119.34	122.90
2	C	2	NAG	O3-C3-C2	-2.50	104.21	109.40
3	D	1	NAG	O3-C3-C4	-2.44	104.62	110.38
2	C	2	NAG	C4-C3-C2	2.40	114.54	111.02
2	C	3	NAG	O7-C7-C8	-2.29	117.98	122.05
3	D	3	NAG	O7-C7-N2	2.28	126.01	121.98
2	C	2	NAG	C6-C5-C4	-2.16	107.71	113.02
2	C	3	NAG	O3-C3-C4	2.14	115.43	110.38
3	D	1	NAG	C1-O5-C5	2.12	115.03	112.19
3	D	3	NAG	O7-C7-C8	-2.10	118.31	122.05
2	C	3	NAG	O7-C7-N2	-2.01	118.43	121.98
2	C	2	NAG	O4-C4-C3	2.00	115.10	110.38

There are no chirality outliers.

All (15) torsion outliers are listed below:

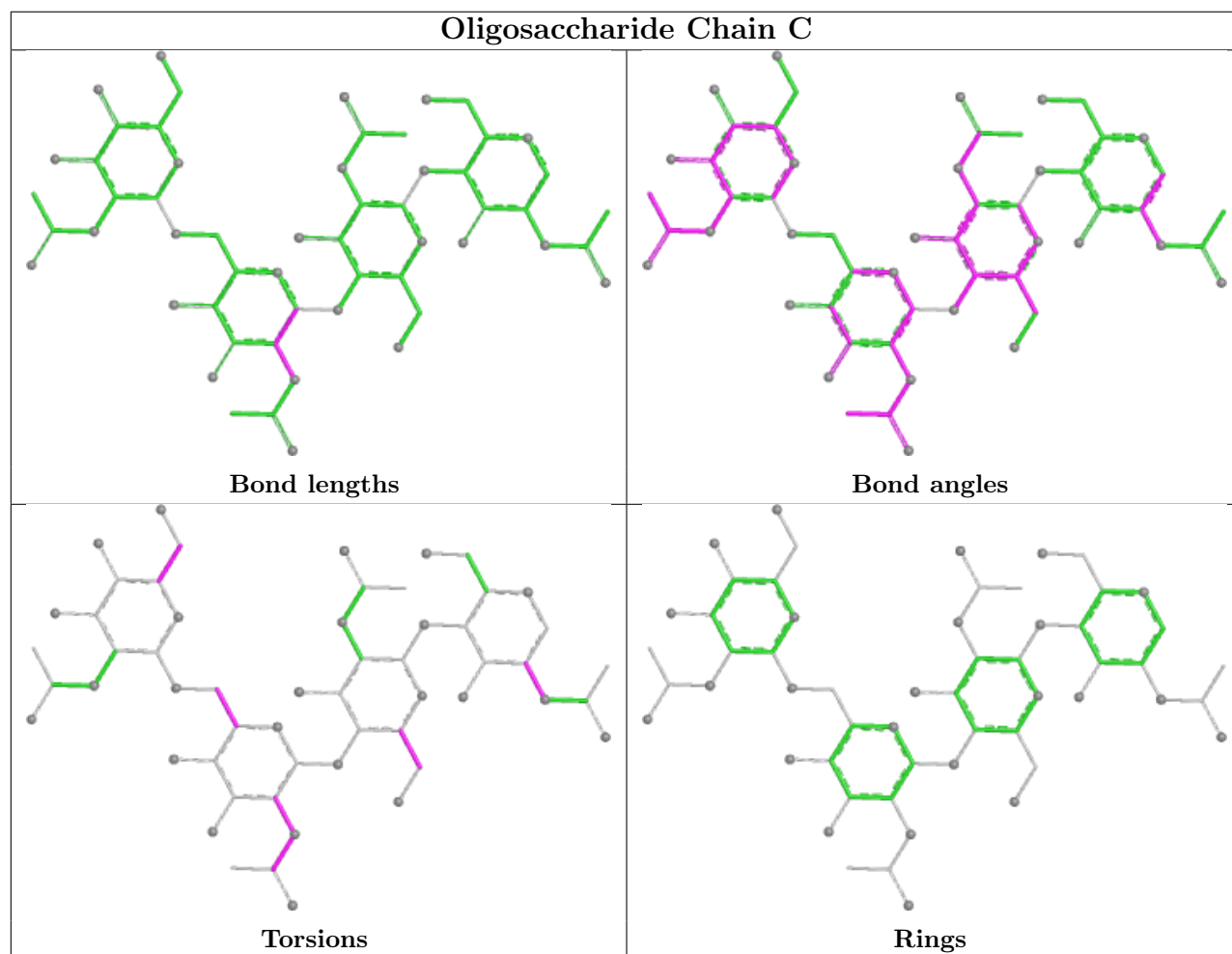
Mol	Chain	Res	Type	Atoms
2	C	3	NAG	C1-C2-N2-C7
3	D	3	NAG	C1-C2-N2-C7
3	D	3	NAG	C4-C5-C6-O6
2	C	3	NAG	O5-C5-C6-O6
3	D	3	NAG	O5-C5-C6-O6
2	C	4	NAG	O5-C5-C6-O6
2	C	3	NAG	C8-C7-N2-C2
2	C	3	NAG	O7-C7-N2-C2
3	D	2	NAG	C8-C7-N2-C2
3	D	2	NAG	O7-C7-N2-C2
2	C	3	NAG	C4-C5-C6-O6
2	C	4	NAG	C4-C5-C6-O6
2	C	2	NAG	C4-C5-C6-O6
2	C	1	NAG	C1-C2-N2-C7
2	C	1	NAG	C3-C2-N2-C7

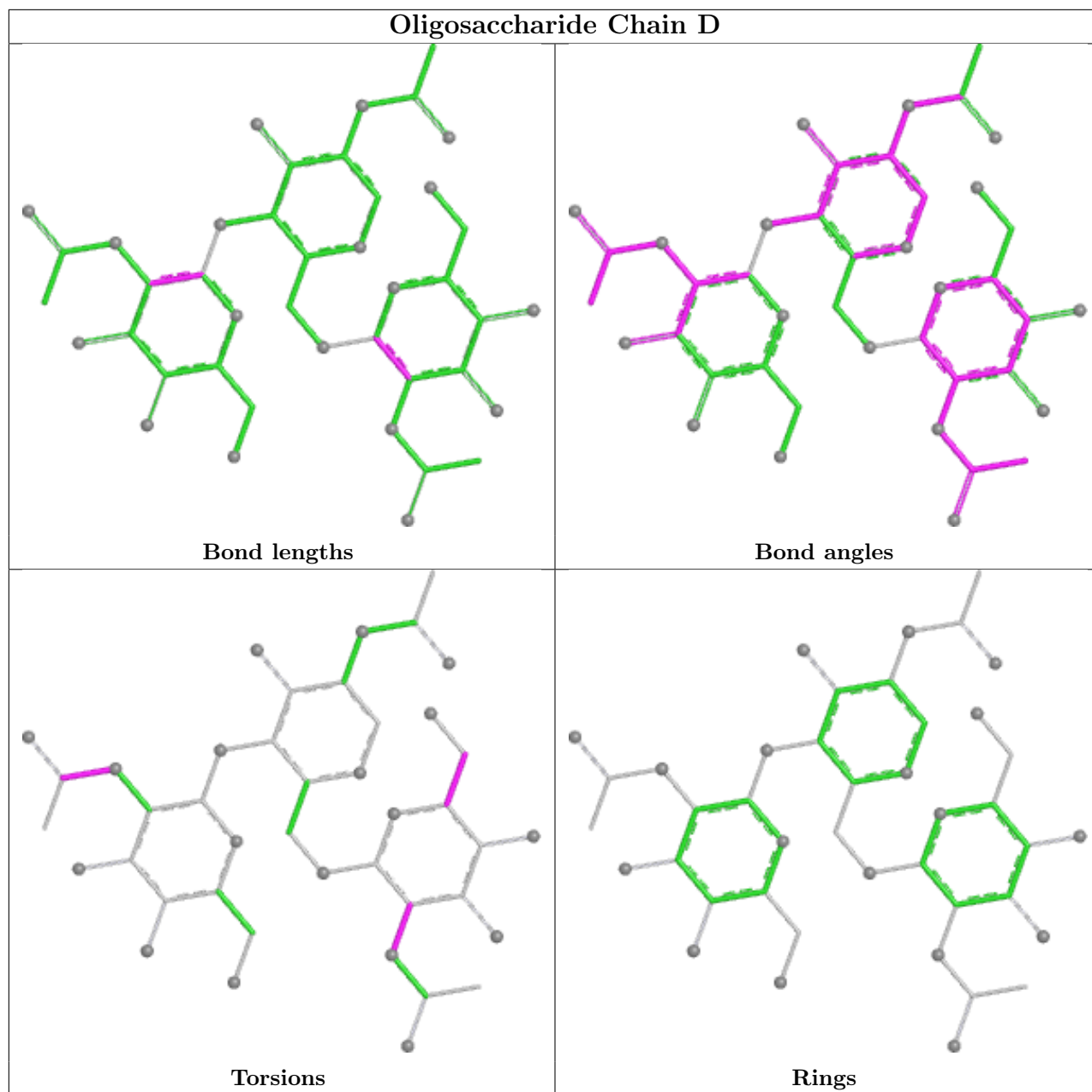
There are no ring outliers.

4 monomers are involved in 5 short contacts:

Mol	Chain	Res	Type	Clashes	Symm-Clashes
2	C	4	NAG	1	0
2	C	2	NAG	1	0
3	D	2	NAG	1	0
3	D	1	NAG	3	0

The following is a two-dimensional graphical depiction of Mogul quality analysis of bond lengths, bond angles, torsion angles, and ring geometry for oligosaccharide.





5.6 Ligand geometry [i](#)

Of 14 ligands modelled in this entry, 10 are monoatomic - leaving 4 for Mogul analysis.

In the following table, the Counts columns list the number of bonds (or angles) for which Mogul statistics could be retrieved, the number of bonds (or angles) that are observed in the model and the number of bonds (or angles) that are defined in the Chemical Component Dictionary. The Link column lists molecule types, if any, to which the group is linked. The Z score for a bond length (or angle) is the number of standard deviations the observed value is removed from the expected value. A bond length (or angle) with $|Z| > 2$ is considered an outlier worth inspection. RMSZ is the root-mean-square of all Z scores of the bond lengths (or angles).

Mol	Type	Chain	Res	Link	Bond lengths			Bond angles		
					Counts	RMSZ	# Z > 2	Counts	RMSZ	# Z > 2
6	4NP	B	1006	4	10,10,14	4.31	6 (60%)	11,13,20	3.97	7 (63%)
7	NAG	A	1007	1	14,14,15	0.55	0	17,19,21	0.62	0
6	4NP	A	1006	4	10,10,14	4.34	6 (60%)	11,13,20	3.53	5 (45%)
7	NAG	B	1010	1	14,14,15	0.54	0	17,19,21	0.61	0

In the following table, the Chirals column lists the number of chiral outliers, the number of chiral centers analysed, the number of these observed in the model and the number defined in the Chemical Component Dictionary. Similar counts are reported in the Torsion and Rings columns. '-' means no outliers of that kind were identified.

Mol	Type	Chain	Res	Link	Chirals	Torsions	Rings
6	4NP	B	1006	4	-	2/2/4/9	0/1/1/1
7	NAG	A	1007	1	-	4/6/23/26	0/1/1/1
6	4NP	A	1006	4	-	2/2/4/9	0/1/1/1
7	NAG	B	1010	1	-	4/6/23/26	0/1/1/1

All (12) bond length outliers are listed below:

Mol	Chain	Res	Type	Atoms	Z	Observed(Å)	Ideal(Å)
6	A	1006	4NP	C3-C4	7.73	1.53	1.38
6	A	1006	4NP	C2-C1	7.57	1.53	1.39
6	B	1006	4NP	C3-C4	7.53	1.52	1.38
6	B	1006	4NP	C2-C1	6.89	1.51	1.39
6	B	1006	4NP	C3-C2	5.58	1.47	1.38
6	A	1006	4NP	C3-C2	5.25	1.47	1.38
6	A	1006	4NP	C5-C4	4.40	1.46	1.38
6	B	1006	4NP	C6-C1	4.33	1.47	1.39
6	A	1006	4NP	C6-C1	3.87	1.46	1.39
6	B	1006	4NP	C5-C4	3.68	1.45	1.38
6	B	1006	4NP	O6-N	3.57	1.28	1.22
6	A	1006	4NP	O6-N	2.52	1.27	1.22

All (12) bond angle outliers are listed below:

Mol	Chain	Res	Type	Atoms	Z	Observed(°)	Ideal(°)
6	B	1006	4NP	C3-C2-C1	-7.19	112.28	119.88
6	A	1006	4NP	C5-C4-N	-6.78	113.42	119.34
6	B	1006	4NP	C5-C4-N	-6.63	113.54	119.34
6	B	1006	4NP	C3-C4-N	5.91	124.50	119.34
6	A	1006	4NP	C3-C4-N	5.57	124.20	119.34
6	A	1006	4NP	C3-C2-C1	-5.47	114.09	119.88

Continued on next page...

Continued from previous page...

Mol	Chain	Res	Type	Atoms	Z	Observed(°)	Ideal(°)
6	B	1006	4NP	O1-C1-C6	-4.13	108.49	120.00
6	B	1006	4NP	C6-C1-C2	3.81	125.83	119.77
6	A	1006	4NP	O1-C1-C6	-3.49	110.27	120.00
6	A	1006	4NP	C6-C1-C2	3.30	125.02	119.77
6	B	1006	4NP	O6-N-C4	2.16	121.80	118.82
6	B	1006	4NP	O1-C1-C2	2.04	125.68	120.00

There are no chirality outliers.

All (12) torsion outliers are listed below:

Mol	Chain	Res	Type	Atoms
6	A	1006	4NP	C3-C4-N-O6
6	A	1006	4NP	C5-C4-N-O6
7	B	1010	NAG	O5-C5-C6-O6
7	B	1010	NAG	C4-C5-C6-O6
7	A	1007	NAG	C4-C5-C6-O6
7	A	1007	NAG	O5-C5-C6-O6
7	A	1007	NAG	C8-C7-N2-C2
7	A	1007	NAG	O7-C7-N2-C2
6	B	1006	4NP	C3-C4-N-O6
6	B	1006	4NP	C5-C4-N-O6
7	B	1010	NAG	C8-C7-N2-C2
7	B	1010	NAG	O7-C7-N2-C2

There are no ring outliers.

3 monomers are involved in 3 short contacts:

Mol	Chain	Res	Type	Clashes	Symm-Clashes
6	B	1006	4NP	1	0
6	A	1006	4NP	1	0
7	B	1010	NAG	1	0

5.7 Other polymers [i](#)

There are no such residues in this entry.

5.8 Polymer linkage issues [i](#)

There are no chain breaks in this entry.

6 Fit of model and data [i](#)

6.1 Protein, DNA and RNA chains [i](#)

In the following table, the column labelled ‘#RSRZ> 2’ contains the number (and percentage) of RSRZ outliers, followed by percent RSRZ outliers for the chain as percentile scores relative to all X-ray entries and entries of similar resolution. The OWAB column contains the minimum, median, 95th percentile and maximum values of the occupancy-weighted average B-factor per residue. The column labelled ‘Q< 0.9’ lists the number of (and percentage) of residues with an average occupancy less than 0.9.

Mol	Chain	Analysed	<RSRZ>	#RSRZ>2	OWAB(Å ²)	Q<0.9
1	A	486/488 (99%)	-0.51	5 (1%) 79 79	12, 20, 36, 65	0
1	B	484/488 (99%)	-0.50	6 (1%) 76 75	11, 20, 39, 64	0
All	All	970/976 (99%)	-0.51	11 (1%) 77 77	11, 20, 38, 65	0

All (11) RSRZ outliers are listed below:

Mol	Chain	Res	Type	RSRZ
1	B	482	GLU	5.0
1	A	401	LEU	4.2
1	B	483	HIS	4.1
1	A	402	ASN	3.9
1	B	481	ASP	3.2
1	A	403	SER	3.2
1	B	480	ALA	3.0
1	B	484	HIS	3.0
1	A	481	ASP	2.8
1	B	401	LEU	2.5
1	A	482	GLU	2.1

6.2 Non-standard residues in protein, DNA, RNA chains [i](#)

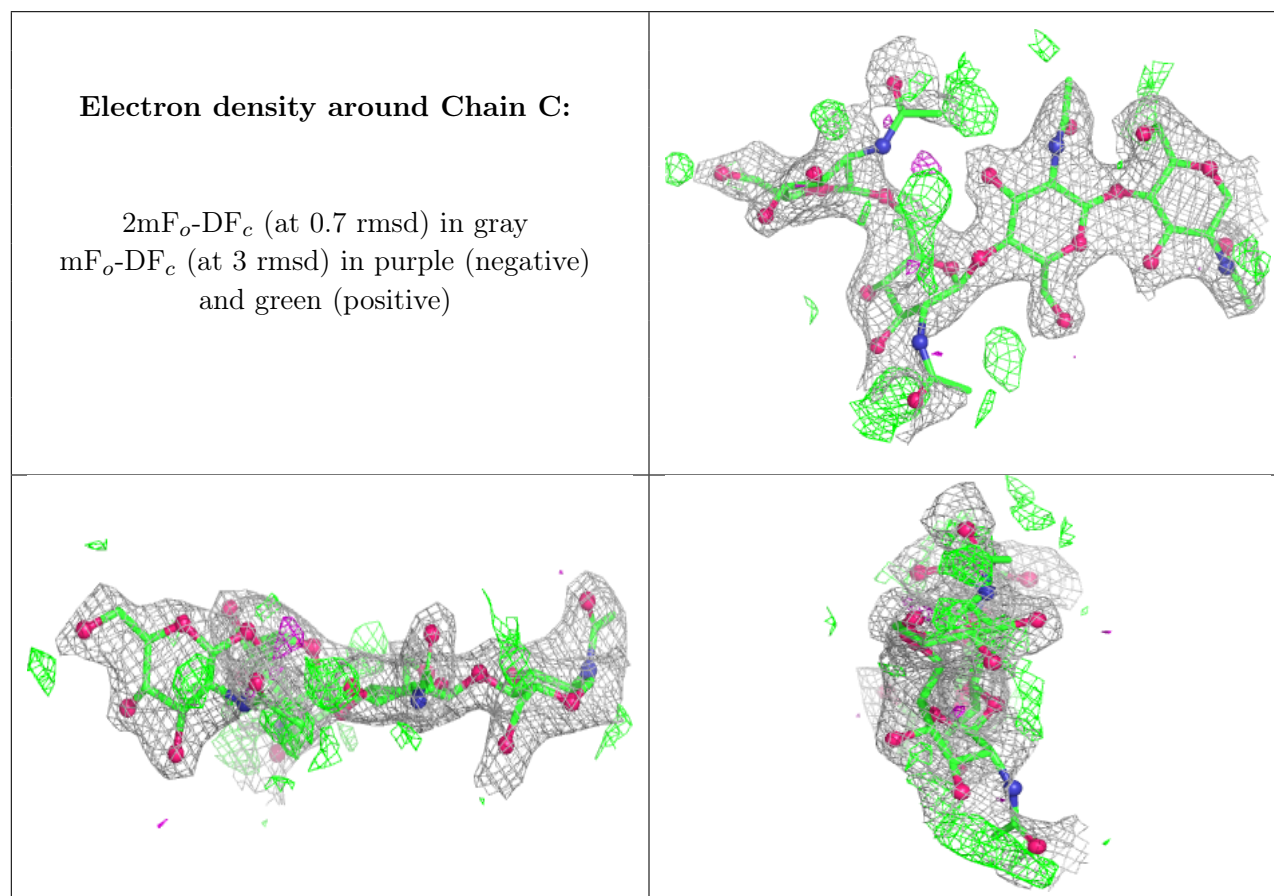
There are no non-standard protein/DNA/RNA residues in this entry.

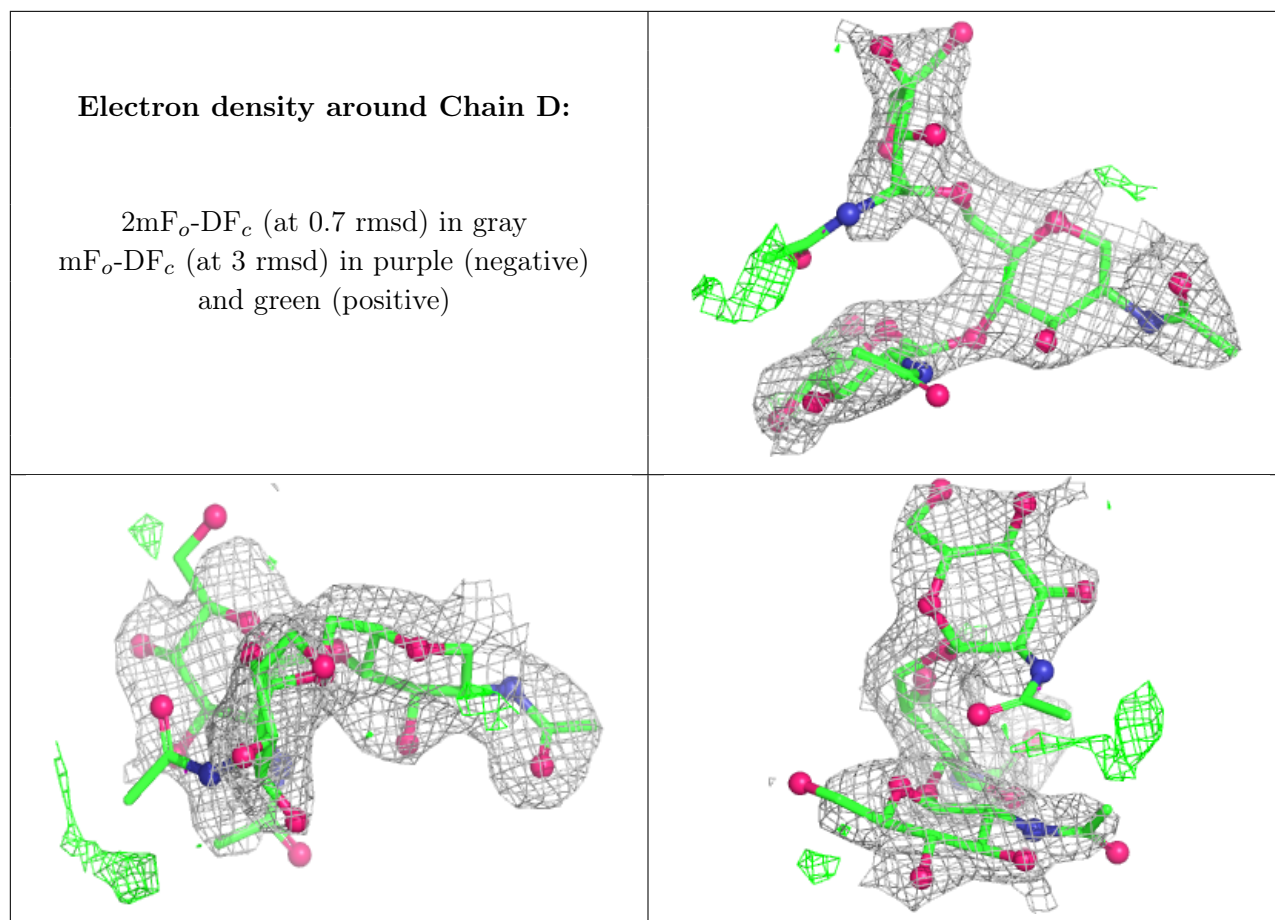
6.3 Carbohydrates [i](#)

In the following table, the Atoms column lists the number of modelled atoms in the group and the number defined in the chemical component dictionary. The B-factors column lists the minimum, median, 95th percentile and maximum values of B factors of atoms in the group. The column labelled ‘Q< 0.9’ lists the number of atoms with occupancy less than 0.9.

Mol	Type	Chain	Res	Atoms	RSCC	RSR	B-factors(\AA^2)	Q<0.9
2	NAG	C	3	14/15	0.61	0.21	51,59,70,70	0
2	NAG	C	4	14/15	0.73	0.17	39,53,69,71	0
3	NAG	D	2	14/15	0.75	0.14	59,69,76,76	0
3	NAG	D	3	14/15	0.79	0.17	53,57,85,86	0
3	NAG	D	1	14/15	0.87	0.10	40,47,53,56	0
2	NAG	C	2	14/15	0.91	0.10	33,36,39,54	0
2	NAG	C	1	14/15	0.91	0.08	29,33,35,37	0

The following is a graphical depiction of the model fit to experimental electron density for oligosaccharide. Each fit is shown from different orientation to approximate a three-dimensional view.





6.4 Ligands [i](#)

In the following table, the Atoms column lists the number of modelled atoms in the group and the number defined in the chemical component dictionary. The B-factors column lists the minimum, median, 95th percentile and maximum values of B factors of atoms in the group. The column labelled 'Q< 0.9' lists the number of atoms with occupancy less than 0.9.

Mol	Type	Chain	Res	Atoms	RSCC	RSR	B-factors(Å ²)	Q<0.9
5	MG	A	1005	1/1	0.60	0.19	49,49,49,49	0
7	NAG	B	1010	14/15	0.64	0.18	30,33,40,41	0
7	NAG	A	1007	14/15	0.66	0.17	36,44,47,50	0
6	4NP	A	1006	10/14	0.80	0.19	34,52,59,62	0
6	4NP	B	1006	10/14	0.82	0.17	31,44,50,53	0
5	MG	A	1003	1/1	0.91	0.07	54,54,54,54	0
5	MG	B	1003	1/1	0.94	0.06	41,41,41,41	0
5	MG	B	1005	1/1	0.95	0.05	31,31,31,31	0
5	MG	B	1004	1/1	0.96	0.07	29,29,29,29	0
5	MG	A	1004	1/1	0.96	0.04	23,23,23,23	0
4	ZN	A	1002	1/1	0.99	0.03	34,34,34,34	1
4	ZN	B	1002	1/1	0.99	0.04	32,32,32,32	1

Continued on next page...

Continued from previous page...

Mol	Type	Chain	Res	Atoms	RSCC	RSR	B-factors(\AA^2)	Q<0.9
4	ZN	B	1001	1/1	1.00	0.03	25,25,25,25	0
4	ZN	A	1001	1/1	1.00	0.04	24,24,24,24	0

6.5 Other polymers [i](#)

There are no such residues in this entry.