



# Full wwPDB X-ray Structure Validation Report ⓘ

Jun 12, 2024 – 04:06 PM EDT

PDB ID : 1KKR  
Title : CRYSTAL STRUCTURE OF CITROBACTER AMALONATICUS METHYL-  
LASPARTATE AMMONIA LYASE CONTAINING (2S,3S)-3-METHYLASP  
ARTIC ACID  
Authors : Levy, C.W.; Buckley, P.A.; Sedelnikova, S.; Kato, K.; Asano, Y.; Rice, D.W.;  
Baker, P.J.  
Deposited on : 2001-12-10  
Resolution : 2.10 Å(reported)

This is a Full wwPDB X-ray Structure Validation Report for a publicly released PDB entry.

We welcome your comments at [validation@mail.wwpdb.org](mailto:validation@mail.wwpdb.org)

A user guide is available at

<https://www.wwpdb.org/validation/2017/XrayValidationReportHelp>

with specific help available everywhere you see the ⓘ symbol.

The types of validation reports are described at

<http://www.wwpdb.org/validation/2017/FAQs#types>.

---

The following versions of software and data (see [references ⓘ](#)) were used in the production of this report:

MolProbity : 4.02b-467  
Mogul : 1.8.5 (274361), CSD as541be (2020)  
Xtrriage (Phenix) : **NOT EXECUTED**  
EDS : **NOT EXECUTED**  
Percentile statistics : 20191225.v01 (using entries in the PDB archive December 25th 2019)  
Ideal geometry (proteins) : Engh & Huber (2001)  
Ideal geometry (DNA, RNA) : Parkinson et al. (1996)  
Validation Pipeline (wwPDB-VP) : 2.36.2

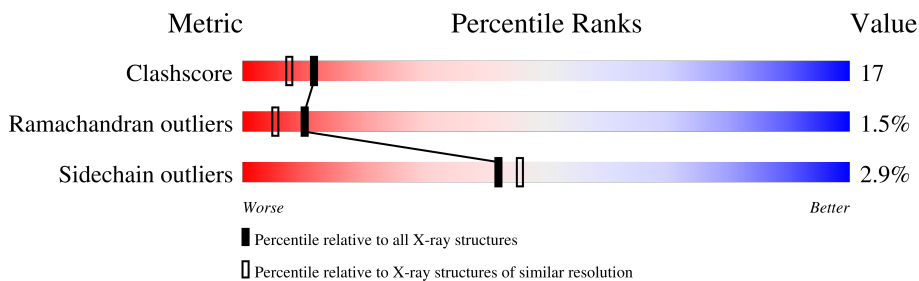
# 1 Overall quality at a glance

The following experimental techniques were used to determine the structure:

*X-RAY DIFFRACTION*

The reported resolution of this entry is 2.10 Å.

Percentile scores (ranging between 0-100) for global validation metrics of the entry are shown in the following graphic. The table shows the number of entries on which the scores are based.



Metric	Whole archive (#Entries)	Similar resolution (#Entries, resolution range(Å))
Clashscore	141614	5710 (2.10-2.10)
Ramachandran outliers	138981	5647 (2.10-2.10)
Sidechain outliers	138945	5648 (2.10-2.10)

The table below summarises the geometric issues observed across the polymeric chains and their fit to the electron density. The red, orange, yellow and green segments of the lower bar indicate the fraction of residues that contain outliers for  $\geq 3$ , 2, 1 and 0 types of geometric quality criteria respectively. A grey segment represents the fraction of residues that are not modelled. The numeric value for each fraction is indicated below the corresponding segment, with a dot representing fractions  $\leq 5\%$ .

Note EDS was not executed.

Mol	Chain	Length	Quality of chain
1	A	413	 78% 17% .
1	B	413	 75% 18% 6%

## 2 Entry composition [i](#)

There are 4 unique types of molecules in this entry. The entry contains 6942 atoms, of which 0 are hydrogens and 0 are deuteriums.

In the tables below, the ZeroOcc column contains the number of atoms modelled with zero occupancy, the AltConf column contains the number of residues with at least one atom in alternate conformation and the Trace column contains the number of residues modelled with at most 2 atoms.

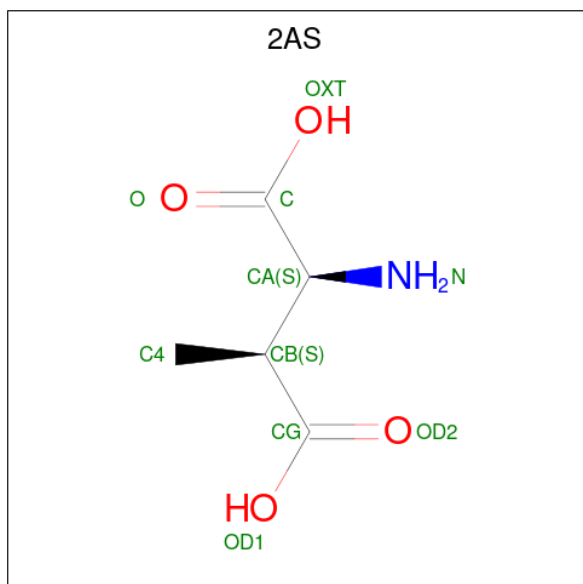
- Molecule 1 is a protein called 3-METHYLASPARTATE AMMONIA-LYASE.

Mol	Chain	Residues	Atoms					ZeroOcc	AltConf	Trace	
			Total	C	N	O	S				Se
1	A	411	Total 3151	C 2003	N 538	O 590	S 10	Se 10	0	0	0
1	B	411	Total 3140	C 1998	N 536	O 586	S 10	Se 10	0	0	0

- Molecule 2 is MAGNESIUM ION (three-letter code: MG) (formula: Mg).

Mol	Chain	Residues	Atoms	ZeroOcc	AltConf	
2	A	1	Total 1	Mg 1	0	0
2	B	1	Total 1	Mg 1	0	0

- Molecule 3 is (2S,3S)-3-methyl-aspartic acid (three-letter code: 2AS) (formula: C<sub>5</sub>H<sub>9</sub>NO<sub>4</sub>).



Mol	Chain	Residues	Atoms				ZeroOcc	AltConf
3	A	1	Total	C	N	O	0	0
			10	5	1	4		
3	A	1	Total	C	N	O	0	0
			10	5	1	4		

- Molecule 4 is water.


Mol	Chain	Residues	Atoms		ZeroOcc	AltConf
4	A	338	Total	O	0	0
			338	338		
4	B	291	Total	O	0	0
			291	291		

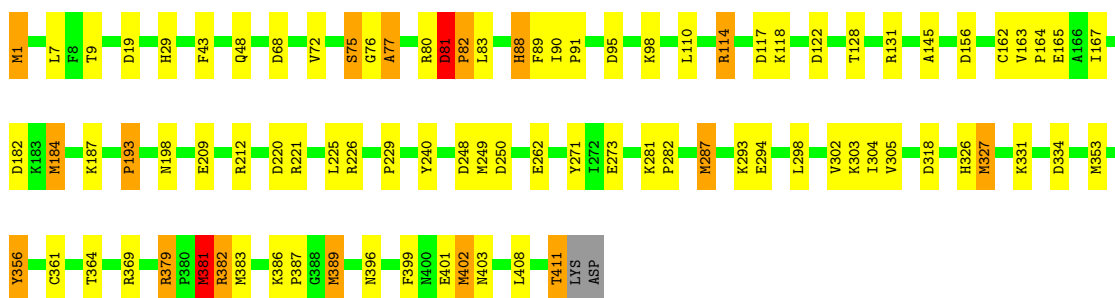
### 3 Residue-property plots

These plots are drawn for all protein, RNA, DNA and oligosaccharide chains in the entry. The first graphic for a chain summarises the proportions of the various outlier classes displayed in the second graphic. The second graphic shows the sequence view annotated by issues in geometry. Residues are color-coded according to the number of geometric quality criteria for which they contain at least one outlier: green = 0, yellow = 1, orange = 2 and red = 3 or more. Stretches of 2 or more consecutive residues without any outlier are shown as a green connector. Residues present in the sample, but not in the model, are shown in grey.


Note EDS was not executed.

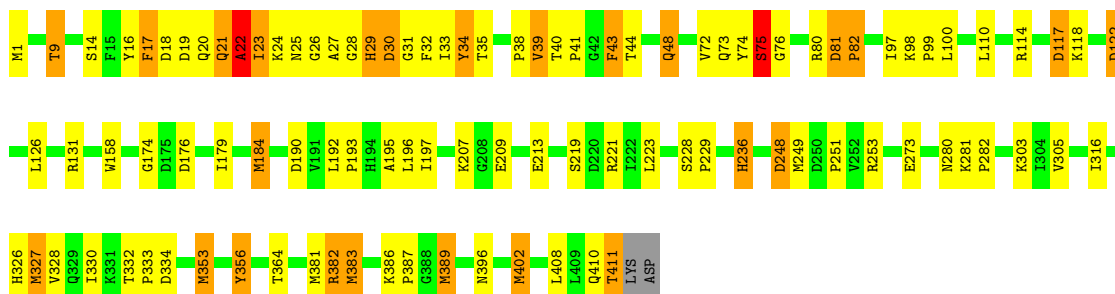
- Molecule 1: 3-METHYLASPARTATE AMMONIA-LYASE

Chain A:  78% 17%



- Molecule 1: 3-METHYLASPARTATE AMMONIA-LYASE

Chain B:  75% 18% 6%



## 4 Data and refinement statistics

Xtrriage (Phenix) and EDS were not executed - this section is therefore incomplete.

Property	Value	Source
Space group	C 2 2 2	Depositor
Cell constants a, b, c, $\alpha$ , $\beta$ , $\gamma$	129.54Å 238.93Å 66.27Å 90.00° 90.00° 90.00°	Depositor
Resolution (Å)	18.00 – 2.10	Depositor
% Data completeness (in resolution range)	93.2 (18.00-2.10)	Depositor
$R_{merge}$	0.06	Depositor
$R_{sym}$	(Not available)	Depositor
Refinement program	REFMAC	Depositor
R, $R_{free}$	0.177 , 0.223	Depositor
Estimated twinning fraction	No twinning to report.	Xtrriage
Total number of atoms	6942	wwPDB-VP
Average B, all atoms (Å <sup>2</sup> )	29.0	wwPDB-VP

## 5 Model quality [i](#)

### 5.1 Standard geometry [i](#)

Bond lengths and bond angles in the following residue types are not validated in this section: 2AS, MG

The Z score for a bond length (or angle) is the number of standard deviations the observed value is removed from the expected value. A bond length (or angle) with  $|Z| > 5$  is considered an outlier worth inspection. RMSZ is the root-mean-square of all Z scores of the bond lengths (or angles).

Mol	Chain	Bond lengths		Bond angles	
		RMSZ	# Z  >5	RMSZ	# Z  >5
1	A	1.05	8/3208 (0.2%)	1.13	20/4341 (0.5%)
1	B	1.08	8/3197 (0.3%)	1.16	17/4327 (0.4%)
All	All	1.07	16/6405 (0.2%)	1.14	37/8668 (0.4%)

Chiral center outliers are detected by calculating the chiral volume of a chiral center and verifying if the center is modelled as a planar moiety or with the opposite hand. A planarity outlier is detected by checking planarity of atoms in a peptide group, atoms in a mainchain group or atoms of a sidechain that are expected to be planar.

Mol	Chain	#Chirality outliers	#Planarity outliers
1	B	0	1

All (16) bond length outliers are listed below:

Mol	Chain	Res	Type	Atoms	Z	Observed(Å)	Ideal(Å)
1	B	184	MSE	SE-CE	-16.75	0.96	1.95
1	A	383	MSE	SE-CE	-15.04	1.06	1.95
1	A	184	MSE	SE-CE	-13.60	1.15	1.95
1	A	327	MSE	SE-CE	-11.69	1.26	1.95
1	B	389	MSE	SE-CE	-11.60	1.26	1.95
1	B	402	MSE	SE-CE	-11.19	1.29	1.95
1	A	1	MSE	SE-CE	-11.17	1.29	1.95
1	B	383	MSE	SE-CE	-10.96	1.30	1.95
1	A	389	MSE	SE-CE	-10.36	1.34	1.95
1	B	353	MSE	SE-CE	-10.11	1.35	1.95
1	A	402	MSE	SE-CE	-9.56	1.39	1.95
1	A	381	MSE	CB-CG	7.44	1.74	1.52
1	B	327	MSE	SE-CE	-7.12	1.53	1.95
1	A	1	MSE	CG-SE	-5.16	1.77	1.95
1	B	1	MSE	SE-CE	-5.14	1.65	1.95
1	B	34	TYR	CD1-CE1	-5.07	1.31	1.39

All (37) bond angle outliers are listed below:

Mol	Chain	Res	Type	Atoms	Z	Observed(°)	Ideal(°)
1	B	17	PHE	O-C-N	-9.37	107.70	122.70
1	A	382	ARG	NE-CZ-NH1	9.18	124.89	120.30
1	A	1	MSE	CG-SE-CE	8.28	117.12	98.90
1	A	287	MSE	CG-SE-CE	-7.41	82.59	98.90
1	A	382	ARG	NE-CZ-NH2	-7.39	116.61	120.30
1	A	381	MSE	CB-CG-SE	-7.32	90.74	112.70
1	B	382	ARG	NE-CZ-NH2	-7.23	116.68	120.30
1	A	250	ASP	CB-CG-OD2	7.15	124.73	118.30
1	B	30	ASP	CB-CG-OD2	7.01	124.61	118.30
1	B	122	ASP	CB-CG-OD2	6.93	124.53	118.30
1	B	117	ASP	CB-CG-OD2	6.88	124.49	118.30
1	A	114	ARG	NE-CZ-NH2	-6.70	116.95	120.30
1	B	81	ASP	CB-CG-OD2	6.42	124.08	118.30
1	A	19	ASP	CB-CG-OD1	6.11	123.80	118.30
1	B	382	ARG	NE-CZ-NH1	6.08	123.34	120.30
1	A	156	ASP	CB-CG-OD2	5.99	123.69	118.30
1	A	68	ASP	CB-CG-OD2	5.85	123.57	118.30
1	A	81	ASP	CB-CG-OD1	5.84	123.55	118.30
1	B	190	ASP	CB-CG-OD2	5.81	123.53	118.30
1	A	379	ARG	NE-CZ-NH1	-5.75	117.43	120.30
1	B	334	ASP	CB-CG-OD2	5.68	123.42	118.30
1	A	220	ASP	CB-CG-OD1	5.54	123.29	118.30
1	A	114	ARG	NE-CZ-NH1	5.54	123.07	120.30
1	B	221	ARG	NE-CZ-NH1	5.50	123.05	120.30
1	B	75	SER	N-CA-C	-5.46	96.25	111.00
1	B	22	ALA	N-CA-C	-5.42	96.38	111.00
1	A	117	ASP	CB-CG-OD2	5.37	123.13	118.30
1	A	122	ASP	CB-CG-OD2	5.31	123.08	118.30
1	A	110	LEU	CB-CG-CD1	5.25	119.93	111.00
1	B	221	ARG	NE-CZ-NH2	-5.25	117.68	120.30
1	B	100	LEU	CB-CG-CD1	5.19	119.83	111.00
1	B	253	ARG	NE-CZ-NH2	5.18	122.89	120.30
1	A	353	MSE	CG-SE-CE	-5.17	87.54	98.90
1	A	318	ASP	CB-CG-OD2	5.16	122.94	118.30
1	B	9	THR	OG1-CB-CG2	-5.09	98.30	110.00
1	B	383	MSE	CG-SE-CE	-5.04	87.80	98.90
1	A	95	ASP	CB-CG-OD2	5.01	122.81	118.30

There are no chirality outliers.

All (1) planarity outliers are listed below:



Mol	Chain	Res	Type	Group
1	B	17	PHE	Mainchain

## 5.2 Too-close contacts [i](#)

In the following table, the Non-H and H(model) columns list the number of non-hydrogen atoms and hydrogen atoms in the chain respectively. The H(added) column lists the number of hydrogen atoms added and optimized by MolProbity. The Clashes column lists the number of clashes within the asymmetric unit, whereas Symm-Clashes lists symmetry-related clashes.

Mol	Chain	Non-H	H(model)	H(added)	Clashes	Symm-Clashes
1	A	3151	0	3105	103	0
1	B	3140	0	3091	125	0
2	A	1	0	0	0	0
2	B	1	0	0	0	0
3	A	20	0	14	0	0
4	A	338	0	0	15	1
4	B	291	0	0	11	0
All	All	6942	0	6210	218	1

The all-atom clashscore is defined as the number of clashes found per 1000 atoms (including hydrogen atoms). The all-atom clashscore for this structure is 17.

All (218) close contacts within the same asymmetric unit are listed below, sorted by their clash magnitude.

Atom-1	Atom-2	Interatomic distance (Å)	Clash overlap (Å)
1:A:381:MSE:CG	1:A:381:MSE:CB	1.74	1.57
1:A:389:MSE:CE	1:A:389:MSE:SE	1.34	1.53
1:B:383:MSE:SE	1:B:383:MSE:CE	1.30	1.49
1:B:402:MSE:SE	1:B:402:MSE:CE	1.29	1.48
1:A:1:MSE:CE	1:A:1:MSE:SE	1.29	1.47
1:B:389:MSE:CE	1:B:389:MSE:SE	1.27	1.46
1:A:327:MSE:SE	1:A:327:MSE:CE	1.26	1.46
1:A:184:MSE:SE	1:A:184:MSE:CE	1.15	1.34
1:B:21:GLN:O	1:B:39:VAL:HG21	1.12	1.26
1:B:9:THR:HG22	4:B:747:HOH:O	1.41	1.18
1:A:1:MSE:SE	1:A:1:MSE:HE1	1.86	1.16
1:B:21:GLN:O	1:B:39:VAL:CG2	1.92	1.15
1:A:1:MSE:SE	1:A:1:MSE:HE3	1.86	1.15
1:A:327:MSE:SE	1:A:327:MSE:HE2	1.83	1.14
1:B:402:MSE:SE	1:B:402:MSE:HE2	1.85	1.14
1:B:389:MSE:SE	1:B:389:MSE:HE2	1.83	1.14

*Continued on next page...*

*Continued from previous page...*

Atom-1	Atom-2	Interatomic distance (Å)	Clash overlap (Å)
1:A:389:MSE:SE	1:A:389:MSE:HE3	1.90	1.12
1:B:383:MSE:SE	1:B:383:MSE:HE2	1.87	1.12
1:B:383:MSE:SE	1:B:383:MSE:HE3	1.87	1.12
1:B:402:MSE:SE	1:B:402:MSE:HE3	1.85	1.12
1:B:389:MSE:SE	1:B:389:MSE:HE3	1.83	1.11
1:A:184:MSE:CE	1:A:184:MSE:CG	2.27	1.11
1:A:327:MSE:SE	1:A:327:MSE:HE3	1.83	1.10
1:A:389:MSE:SE	1:A:389:MSE:HE2	1.90	1.09
1:A:1:MSE:SE	1:A:1:MSE:HE2	1.86	1.09
1:A:389:MSE:SE	1:A:389:MSE:HE1	1.90	1.09
1:B:19:ASP:OD1	1:B:39:VAL:HG23	1.53	1.08
1:A:327:MSE:SE	1:A:327:MSE:HE1	1.83	1.07
1:B:389:MSE:CE	1:B:389:MSE:CG	2.30	1.07
1:B:402:MSE:SE	1:B:402:MSE:HE1	1.85	1.07
1:B:383:MSE:CE	1:B:383:MSE:CG	2.32	1.07
1:B:383:MSE:SE	1:B:383:MSE:HE1	1.87	1.06
1:B:389:MSE:SE	1:B:389:MSE:HE1	1.83	1.06
1:A:184:MSE:SE	1:A:184:MSE:HE2	1.73	1.05
1:A:184:MSE:SE	1:A:184:MSE:HE1	1.73	1.04
1:A:381:MSE:HG3	4:A:907:HOH:O	1.54	1.04
1:B:122:ASP:HB3	4:B:722:HOH:O	1.55	1.04
1:A:184:MSE:SE	1:A:184:MSE:HE3	1.73	1.03
1:B:18:ASP:OD2	1:B:73:GLN:NE2	1.94	1.00
1:A:80:ARG:HB2	4:A:1092:HOH:O	1.60	0.99
1:A:331:LYS:HD3	4:A:1069:HOH:O	1.63	0.99
1:B:72:VAL:HG21	1:B:80:ARG:HD3	1.45	0.99
1:A:72:VAL:HG21	1:A:80:ARG:HD2	1.44	0.98
1:A:327:MSE:CE	1:A:327:MSE:CG	2.41	0.97
1:A:381:MSE:CB	1:A:381:MSE:SE	2.62	0.97
1:A:114:ARG:O	1:A:118:LYS:HD3	1.63	0.96
1:B:81:ASP:HB3	1:B:82:PRO:HD2	1.47	0.95
1:A:88:HIS:C	1:A:88:HIS:CD2	2.40	0.94
1:B:402:MSE:CE	1:B:402:MSE:CG	2.45	0.94
1:B:383:MSE:HE2	4:B:638:HOH:O	1.69	0.92
1:B:75:SER:HB2	4:B:690:HOH:O	1.70	0.91
1:B:19:ASP:OD1	1:B:39:VAL:CG2	2.18	0.91
1:B:22:ALA:HB2	1:B:39:VAL:HG22	1.48	0.91
1:A:389:MSE:CE	1:A:389:MSE:CG	2.52	0.88
1:B:184:MSE:HE1	1:B:192:LEU:HB2	1.55	0.86
1:A:88:HIS:HD2	1:A:89:PHE:N	1.74	0.85
1:B:389:MSE:HE3	1:B:389:MSE:CB	2.08	0.84

*Continued on next page...*

*Continued from previous page...*

Atom-1	Atom-2	Interatomic distance (Å)	Clash overlap (Å)
1:A:249:MSE:HE3	1:A:287:MSE:HE1	1.58	0.83
1:A:182:ASP:OD2	1:B:32:PHE:N	2.11	0.82
1:B:19:ASP:OD2	1:B:39:VAL:N	2.11	0.82
1:A:80:ARG:CB	4:A:1092:HOH:O	2.23	0.81
1:B:74:TYR:C	1:B:75:SER:O	2.18	0.79
1:A:88:HIS:CD2	1:A:89:PHE:N	2.52	0.78
1:B:184:MSE:CE	1:B:192:LEU:HB2	2.15	0.77
1:A:182:ASP:CB	1:B:32:PHE:HB3	2.16	0.76
1:B:381:MSE:HE2	4:B:699:HOH:O	1.86	0.75
1:A:381:MSE:SE	1:A:381:MSE:HB3	2.37	0.74
1:A:1:MSE:HE3	1:A:145:ALA:HB1	1.67	0.74
1:A:1:MSE:HE1	1:A:145:ALA:HA	1.69	0.74
1:A:408:LEU:O	1:A:411:THR:HB	1.88	0.73
1:A:1:MSE:HE3	1:A:145:ALA:CB	2.18	0.73
1:A:88:HIS:HD2	1:A:89:PHE:CA	2.02	0.72
1:A:88:HIS:C	1:A:88:HIS:HD2	1.88	0.72
1:B:389:MSE:CE	1:B:389:MSE:CB	2.66	0.71
1:A:1:MSE:CE	1:A:1:MSE:CG	2.63	0.71
1:B:29:HIS:NE2	4:B:727:HOH:O	2.24	0.70
1:B:22:ALA:O	1:B:27:ALA:HB2	1.91	0.70
1:A:381:MSE:CG	4:A:907:HOH:O	2.22	0.70
1:B:408:LEU:O	1:B:411:THR:HB	1.93	0.68
1:B:72:VAL:CG2	1:B:80:ARG:HD3	2.23	0.68
1:B:81:ASP:HB3	1:B:82:PRO:CD	2.23	0.67
1:B:236:HIS:HD2	1:B:382:ARG:HH11	1.41	0.67
1:B:43:PHE:HA	1:B:48:GLN:HE22	1.59	0.67
1:A:88:HIS:HD2	1:A:89:PHE:HA	1.59	0.66
1:B:184:MSE:HE1	1:B:192:LEU:CB	2.26	0.66
1:B:23:ILE:O	1:B:25:ASN:N	2.30	0.65
1:A:304:ILE:H	1:A:326:HIS:HD2	1.44	0.65
1:A:128:THR:HG22	1:A:131:ARG:NH2	2.11	0.65
1:B:389:MSE:HE3	1:B:389:MSE:CA	2.26	0.65
1:B:213:GLU:CD	4:B:666:HOH:O	2.36	0.64
1:A:209:GLU:OE1	1:A:212:ARG:NE	2.30	0.63
1:B:43:PHE:HA	1:B:48:GLN:NE2	2.13	0.63
1:B:281:LYS:HB3	1:B:282:PRO:HD3	1.80	0.62
1:A:81:ASP:CB	1:A:82:PRO:HD2	2.31	0.61
1:A:381:MSE:HG2	4:A:1023:HOH:O	2.01	0.61
1:B:184:MSE:CE	1:B:192:LEU:CB	2.78	0.60
1:B:389:MSE:HE3	1:B:389:MSE:HA	1.83	0.60
1:A:1:MSE:CE	1:A:145:ALA:HA	2.31	0.60

*Continued on next page...*

*Continued from previous page...*

Atom-1	Atom-2	Interatomic distance (Å)	Clash overlap (Å)
1:B:19:ASP:OD2	1:B:38:PRO:CA	2.50	0.60
1:B:29:HIS:CE1	4:B:727:HOH:O	2.54	0.60
1:B:389:MSE:HE3	1:B:389:MSE:HB3	1.84	0.59
1:A:182:ASP:HB3	1:B:32:PHE:HB3	1.83	0.59
1:B:236:HIS:CD2	1:B:382:ARG:HH11	2.20	0.59
1:A:184:MSE:CE	1:A:184:MSE:HG3	2.32	0.57
1:A:72:VAL:HG21	1:A:80:ARG:CD	2.26	0.57
1:B:114:ARG:O	1:B:118:LYS:HD3	2.05	0.56
1:A:221:ARG:NH2	1:B:30:ASP:O	2.37	0.56
1:B:18:ASP:HB2	1:B:74:TYR:CE2	2.40	0.56
1:B:328:VAL:HG13	1:B:353:MSE:HE3	1.88	0.56
1:A:386:LYS:HB2	1:A:387:PRO:HA	1.87	0.55
1:A:364:THR:HA	1:B:396:ASN:HD21	1.71	0.55
1:B:81:ASP:CB	1:B:82:PRO:HD2	2.30	0.55
1:B:236:HIS:HE1	1:B:273:GLU:OE1	1.89	0.55
1:A:399:PHE:CZ	1:A:403:ASN:ND2	2.75	0.55
1:A:1:MSE:CE	1:A:1:MSE:CB	2.84	0.55
1:A:81:ASP:CB	1:A:82:PRO:CD	2.84	0.55
1:A:293:LYS:HD3	4:A:1047:HOH:O	2.05	0.55
1:A:182:ASP:HB2	1:B:32:PHE:HB3	1.87	0.54
1:A:327:MSE:HE2	1:A:356:TYR:HB2	1.91	0.53
1:B:305:VAL:CG2	1:B:327:MSE:HE2	2.38	0.53
1:A:88:HIS:CD2	1:A:88:HIS:O	2.61	0.53
1:B:23:ILE:C	1:B:25:ASN:N	2.62	0.53
1:B:19:ASP:OD2	1:B:38:PRO:CB	2.57	0.53
1:B:184:MSE:CE	1:B:184:MSE:CB	2.73	0.53
1:B:303:LYS:HA	1:B:326:HIS:CE1	2.43	0.52
1:A:361:CYS:HB3	1:A:389:MSE:HE2	1.93	0.51
1:A:327:MSE:HE1	1:A:382:ARG:CZ	2.40	0.51
1:B:23:ILE:C	1:B:25:ASN:H	2.14	0.51
1:B:174:GLY:N	1:B:389:MSE:HE1	2.25	0.51
1:A:9:THR:HG23	4:A:830:HOH:O	2.11	0.51
1:A:90:ILE:HB	1:A:91:PRO:HD3	1.93	0.50
1:B:383:MSE:CE	1:B:383:MSE:HG3	2.34	0.50
4:A:1032:HOH:O	1:B:73:GLN:HB3	2.11	0.49
1:A:182:ASP:HB2	1:B:32:PHE:CB	2.42	0.49
1:A:88:HIS:CD2	1:A:89:PHE:HA	2.45	0.49
1:B:20:GLN:O	1:B:21:GLN:CB	2.61	0.49
1:B:174:GLY:HA3	1:B:389:MSE:HE2	1.94	0.49
1:A:72:VAL:CG2	1:A:80:ARG:HD2	2.29	0.48
1:B:383:MSE:HE2	1:B:383:MSE:CG	2.31	0.48

*Continued on next page...*

*Continued from previous page...*

Atom-1	Atom-2	Interatomic distance (Å)	Clash overlap (Å)
1:A:76:GLY:O	1:A:77:ALA:HB2	2.13	0.48
1:B:28:GLY:O	1:B:34:TYR:HA	2.14	0.48
1:B:19:ASP:O	1:B:22:ALA:HB3	2.13	0.48
1:B:195:ALA:O	1:B:196:LEU:C	2.52	0.48
1:B:98:LYS:HB3	1:B:99:PRO:HD3	1.96	0.48
1:B:327:MSE:HE3	1:B:356:TYR:CB	2.43	0.47
1:B:18:ASP:CB	1:B:74:TYR:CE2	2.97	0.47
1:B:228:SER:HB2	1:B:229:PRO:CD	2.44	0.47
1:B:209:GLU:O	1:B:213:GLU:HG3	2.14	0.47
1:A:294:GLU:O	1:A:298:LEU:HG	2.15	0.47
1:A:198:ASN:HB2	1:A:240:TYR:CD1	2.50	0.47
1:B:19:ASP:OD2	1:B:38:PRO:HB2	2.15	0.47
1:B:316:ILE:HD13	1:B:330:ILE:HG12	1.95	0.46
1:B:383:MSE:HE3	1:B:383:MSE:HG3	1.97	0.46
1:A:81:ASP:HB3	1:A:82:PRO:HD2	1.97	0.46
1:A:262:GLU:HB2	1:A:302:VAL:HG23	1.97	0.46
1:A:369:ARG:HG3	1:A:401:GLU:HG2	1.97	0.46
1:B:80:ARG:N	4:B:550:HOH:O	2.49	0.46
1:B:249:MSE:HB3	1:B:249:MSE:HE3	1.62	0.46
1:A:81:ASP:CG	1:A:82:PRO:HD2	2.35	0.46
1:B:305:VAL:CG1	1:B:327:MSE:HE2	2.45	0.46
1:A:43:PHE:HA	1:A:48:GLN:OE1	2.16	0.46
1:B:29:HIS:ND1	1:B:33:ILE:O	2.43	0.46
1:B:174:GLY:HA3	1:B:389:MSE:CE	2.46	0.46
1:A:226:ARG:CZ	1:A:229:PRO:HA	2.46	0.45
1:B:389:MSE:CE	1:B:389:MSE:HB3	2.42	0.45
1:A:167:ILE:H	1:A:402:MSE:SE	2.49	0.45
1:A:281:LYS:HB3	1:A:282:PRO:HD3	1.99	0.45
1:A:381:MSE:CG	1:A:381:MSE:CA	2.82	0.45
1:B:40:THR:CG2	1:B:41:PRO:HD2	2.46	0.45
1:A:164:PRO:HA	4:A:1051:HOH:O	2.17	0.45
1:B:40:THR:HA	1:B:41:PRO:HD3	1.88	0.45
1:A:327:MSE:CE	1:A:327:MSE:HG3	2.42	0.45
1:A:88:HIS:CE1	4:A:886:HOH:O	2.68	0.45
1:B:327:MSE:HE3	1:B:356:TYR:HB2	1.99	0.45
1:B:381:MSE:O	1:B:381:MSE:HG3	2.17	0.45
1:A:248:ASP:HA	4:A:1039:HOH:O	2.15	0.44
1:B:174:GLY:CA	1:B:389:MSE:HE1	2.47	0.44
1:B:197:ILE:HG22	1:B:197:ILE:O	2.18	0.44
1:A:1:MSE:CE	1:A:145:ALA:CA	2.96	0.44
1:A:273:GLU:HA	1:A:305:VAL:HB	2.00	0.44

*Continued on next page...*

*Continued from previous page...*

Atom-1	Atom-2	Interatomic distance (Å)	Clash overlap (Å)
1:B:76:GLY:N	4:B:690:HOH:O	2.51	0.44
1:B:176:ASP:OD1	1:B:179:ILE:HB	2.18	0.44
1:A:184:MSE:CG	1:A:184:MSE:HE3	2.26	0.44
1:B:117:ASP:OD1	1:B:131:ARG:HD2	2.18	0.43
1:A:29:HIS:HD2	4:A:937:HOH:O	2.01	0.43
1:B:40:THR:HG22	1:B:41:PRO:HD2	1.99	0.43
1:A:248:ASP:CA	4:A:1039:HOH:O	2.67	0.43
1:B:228:SER:HB2	1:B:229:PRO:HD2	2.01	0.43
1:A:163:VAL:HA	1:A:164:PRO:HD3	1.78	0.42
1:B:410:GLN:NE2	4:B:776:HOH:O	2.51	0.42
1:A:7:LEU:HD12	1:A:7:LEU:N	2.34	0.42
1:A:221:ARG:NH2	1:B:31:GLY:HA3	2.34	0.42
1:B:19:ASP:OD1	1:B:39:VAL:HG22	2.14	0.42
1:B:74:TYR:O	1:B:75:SER:C	2.54	0.42
1:B:110:LEU:HD13	1:B:158:TRP:CH2	2.55	0.42
1:B:280:ASN:OD1	1:B:282:PRO:HD2	2.19	0.42
1:B:386:LYS:HB2	1:B:387:PRO:HA	2.02	0.42
1:B:248:ASP:C	1:B:249:MSE:HG2	2.38	0.42
1:A:118:LYS:HE2	4:A:977:HOH:O	2.19	0.42
1:B:32:PHE:CG	1:B:32:PHE:O	2.71	0.42
1:A:80:ARG:HD3	1:A:334:ASP:OD2	2.20	0.41
1:B:44:THR:H	1:B:48:GLN:NE2	2.18	0.41
1:B:327:MSE:HE3	1:B:356:TYR:CD2	2.55	0.41
1:B:389:MSE:HE2	1:B:389:MSE:CG	2.29	0.41
1:A:165:GLU:HB3	1:A:379:ARG:NH2	2.35	0.41
1:A:184:MSE:CG	1:A:184:MSE:HE2	2.26	0.41
1:B:249:MSE:O	1:B:251:PRO:HD3	2.20	0.41
1:A:396:ASN:HD21	1:B:364:THR:HA	1.85	0.41
1:B:219:SER:O	1:B:223:LEU:HG	2.21	0.41
1:A:221:ARG:HD2	1:A:225:LEU:HD13	2.03	0.41
1:B:21:GLN:O	1:B:39:VAL:HG11	2.21	0.41
1:A:187:LYS:HE3	1:B:16:TYR:CE2	2.56	0.40
1:A:271:TYR:CZ	1:A:303:LYS:HD2	2.56	0.40
1:B:97:ILE:HD11	1:B:126:LEU:HD21	2.02	0.40
1:B:332:THR:OG1	1:B:333:PRO:HD3	2.22	0.40
1:A:75:SER:OG	1:A:83:LEU:HA	2.21	0.40
1:A:399:PHE:CE2	1:A:403:ASN:ND2	2.90	0.40
1:B:14:SER:HB2	1:B:387:PRO:HB2	2.04	0.40

All (1) symmetry-related close contacts are listed below. The label for Atom-2 includes the symmetry operator and encoded unit-cell translations to be applied.

Atom-1	Atom-2	Interatomic distance (Å)	Clash overlap (Å)
4:A:982:HOH:O	4:A:982:HOH:O[3_453]	2.19	0.01

### 5.3 Torsion angles [i](#)

#### 5.3.1 Protein backbone [i](#)

In the following table, the Percentiles column shows the percent Ramachandran outliers of the chain as a percentile score with respect to all X-ray entries followed by that with respect to entries of similar resolution.

The Analysed column shows the number of residues for which the backbone conformation was analysed, and the total number of residues.

Mol	Chain	Analysed	Favoured	Allowed	Outliers	Percentiles	
1	A	409/413 (99%)	389 (95%)	17 (4%)	3 (1%)	22	18
1	B	409/413 (99%)	382 (93%)	18 (4%)	9 (2%)	6	2
All	All	818/826 (99%)	771 (94%)	35 (4%)	12 (2%)	10	5

All (12) Ramachandran outliers are listed below:

Mol	Chain	Res	Type
1	B	21	GLN
1	B	22	ALA
1	B	24	LYS
1	B	26	GLY
1	A	77	ALA
1	B	43	PHE
1	B	75	SER
1	A	82	PRO
1	B	82	PRO
1	B	23	ILE
1	A	193	PRO
1	B	193	PRO

#### 5.3.2 Protein sidechains [i](#)

In the following table, the Percentiles column shows the percent sidechain outliers of the chain as a percentile score with respect to all X-ray entries followed by that with respect to entries of similar resolution.

The Analysed column shows the number of residues for which the sidechain conformation was

analysed, and the total number of residues.

Mol	Chain	Analysed	Rotameric	Outliers	Percentiles	
1	A	333/331 (101%)	324 (97%)	9 (3%)	44	48
1	B	330/331 (100%)	320 (97%)	10 (3%)	41	44
All	All	663/662 (100%)	644 (97%)	19 (3%)	42	46

All (19) residues with a non-rotameric sidechain are listed below:

Mol	Chain	Res	Type
1	A	75	SER
1	A	81	ASP
1	A	88	HIS
1	A	98	LYS
1	A	162	CYS
1	A	193	PRO
1	A	356	TYR
1	A	381	MSE
1	A	411	THR
1	B	29	HIS
1	B	35	THR
1	B	39	VAL
1	B	48	GLN
1	B	75	SER
1	B	207	LYS
1	B	236	HIS
1	B	248	ASP
1	B	356	TYR
1	B	411	THR

Sometimes sidechains can be flipped to improve hydrogen bonding and reduce clashes. All (14) such sidechains are listed below:

Mol	Chain	Res	Type
1	A	5	GLN
1	A	20	GLN
1	A	21	GLN
1	A	25	ASN
1	A	29	HIS
1	A	88	HIS
1	A	326	HIS
1	A	410	GLN
1	B	25	ASN

*Continued on next page...*



*Continued from previous page...*

Mol	Chain	Res	Type
1	B	48	GLN
1	B	94	ASN
1	B	236	HIS
1	B	396	ASN
1	B	410	GLN

### 5.3.3 RNA [i](#)

There are no RNA molecules in this entry.

### 5.4 Non-standard residues in protein, DNA, RNA chains [i](#)

There are no non-standard protein/DNA/RNA residues in this entry.

### 5.5 Carbohydrates [i](#)

There are no monosaccharides in this entry.

### 5.6 Ligand geometry [i](#)

Of 4 ligands modelled in this entry, 2 are monoatomic - leaving 2 for Mogul analysis.

In the following table, the Counts columns list the number of bonds (or angles) for which Mogul statistics could be retrieved, the number of bonds (or angles) that are observed in the model and the number of bonds (or angles) that are defined in the Chemical Component Dictionary. The Link column lists molecule types, if any, to which the group is linked. The Z score for a bond length (or angle) is the number of standard deviations the observed value is removed from the expected value. A bond length (or angle) with  $|Z| > 2$  is considered an outlier worth inspection. RMSZ is the root-mean-square of all Z scores of the bond lengths (or angles).

Mol	Type	Chain	Res	Link	Bond lengths			Bond angles		
					Counts	RMSZ	$\# Z  > 2$	Counts	RMSZ	$\# Z  > 2$
3	2AS	A	800	2	8,9,9	1.42	3 (37%)	8,12,12	1.51	0
3	2AS	A	801	2	8,9,9	1.15	2 (25%)	8,12,12	2.22	3 (37%)

In the following table, the Chirals column lists the number of chiral outliers, the number of chiral centers analysed, the number of these observed in the model and the number defined in the Chemical Component Dictionary. Similar counts are reported in the Torsion and Rings columns. '·' means no outliers of that kind were identified.

Mol	Type	Chain	Res	Link	Chirals	Torsions	Rings
3	2AS	A	800	2	-	0/12/12/12	-
3	2AS	A	801	2	-	0/12/12/12	-

All (5) bond length outliers are listed below:

Mol	Chain	Res	Type	Atoms	Z	Observed(Å)	Ideal(Å)
3	A	800	2AS	OXT-C	-2.43	1.22	1.30
3	A	800	2AS	OD1-CG	-2.30	1.23	1.30
3	A	801	2AS	OD1-CG	-2.18	1.23	1.30
3	A	800	2AS	CB-CA	-2.17	1.52	1.55
3	A	801	2AS	OXT-C	-2.04	1.23	1.30

All (3) bond angle outliers are listed below:

Mol	Chain	Res	Type	Atoms	Z	Observed(°)	Ideal(°)
3	A	801	2AS	C4-CB-CA	4.22	117.50	111.34
3	A	801	2AS	OXT-C-O	-2.58	118.24	124.09
3	A	801	2AS	OD1-CG-CB	2.28	122.72	114.62

There are no chirality outliers.

There are no torsion outliers.

There are no ring outliers.

No monomer is involved in short contacts.

## 5.7 Other polymers [i](#)

There are no such residues in this entry.

## 5.8 Polymer linkage issues [i](#)

There are no chain breaks in this entry.

## 6 Fit of model and data [i](#)

### 6.1 Protein, DNA and RNA chains [i](#)

EDS was not executed - this section is therefore empty.

### 6.2 Non-standard residues in protein, DNA, RNA chains [i](#)

EDS was not executed - this section is therefore empty.

### 6.3 Carbohydrates [i](#)

EDS was not executed - this section is therefore empty.

### 6.4 Ligands [i](#)

EDS was not executed - this section is therefore empty.

### 6.5 Other polymers [i](#)

EDS was not executed - this section is therefore empty.