



Full wwPDB X-ray Structure Validation Report ⓘ

May 19, 2020 – 12:38 pm BST

PDB ID : 3KN5
Title : Crystal structure of the C-terminal kinase domain of msk1 in complex with AMP-PNP
Authors : D'Angelo, I.; Malakhova, M.; Dong, Z.
Deposited on : 2009-11-12
Resolution : 2.40 Å(reported)

This is a Full wwPDB X-ray Structure Validation Report for a publicly released PDB entry.

We welcome your comments at validation@mail.wwpdb.org

A user guide is available at

<https://www.wwpdb.org/validation/2017/XrayValidationReportHelp>

with specific help available everywhere you see the ⓘ symbol.

The following versions of software and data (see [references ⓘ](#)) were used in the production of this report:

MolProbity : 4.02b-467
Mogul : 1.8.5 (274361), CSD as541be (2020)
Xtriage (Phenix) : 1.13
EDS : 2.11
buster-report : 1.1.7 (2018)
Percentile statistics : 20191225.v01 (using entries in the PDB archive December 25th 2019)
Refmac : 5.8.0158
CCP4 : 7.0.044 (Gargrove)
Ideal geometry (proteins) : Engh & Huber (2001)
Ideal geometry (DNA, RNA) : Parkinson et al. (1996)
Validation Pipeline (wwPDB-VP) : 2.11

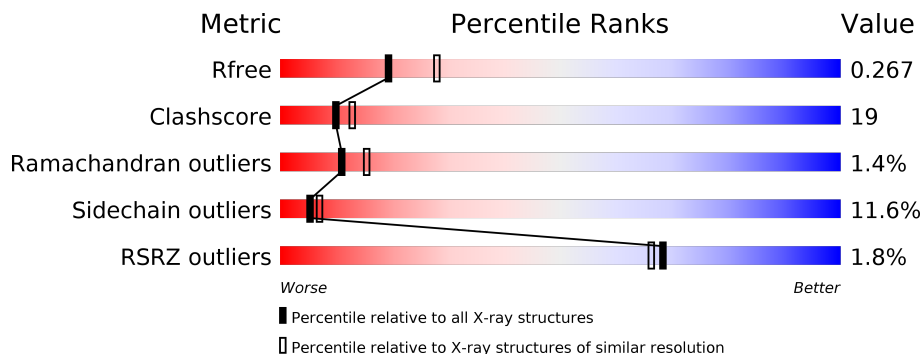
1 Overall quality at a glance

The following experimental techniques were used to determine the structure:

X-RAY DIFFRACTION

The reported resolution of this entry is 2.40 Å.

Percentile scores (ranging between 0-100) for global validation metrics of the entry are shown in the following graphic. The table shows the number of entries on which the scores are based.



Metric	Whole archive (#Entries)	Similar resolution (#Entries, resolution range(Å))
R_{free}	130704	3907 (2.40-2.40)
Clashscore	141614	4398 (2.40-2.40)
Ramachandran outliers	138981	4318 (2.40-2.40)
Sidechain outliers	138945	4319 (2.40-2.40)
RSRZ outliers	127900	3811 (2.40-2.40)

The table below summarises the geometric issues observed across the polymeric chains and their fit to the electron density. The red, orange, yellow and green segments on the lower bar indicate the fraction of residues that contain outliers for ≥ 3 , 2, 1 and 0 types of geometric quality criteria respectively. A grey segment represents the fraction of residues that are not modelled. The numeric value for each fraction is indicated below the corresponding segment, with a dot representing fractions $\leq 5\%$. The upper red bar (where present) indicates the fraction of residues that have poor fit to the electron density. The numeric value is given above the bar.

Mol	Chain	Length	Quality of chain
1	A	325	
1	B	325	

The following table lists non-polymeric compounds, carbohydrate monomers and non-standard residues in protein, DNA, RNA chains that are outliers for geometric or electron-density-fit criteria:

Mol	Type	Chain	Res	Chirality	Geometry	Clashes	Electron density
2	ANP	A	400	-	-	-	X
2	ANP	B	400	-	-	-	X

2 Entry composition [i](#)

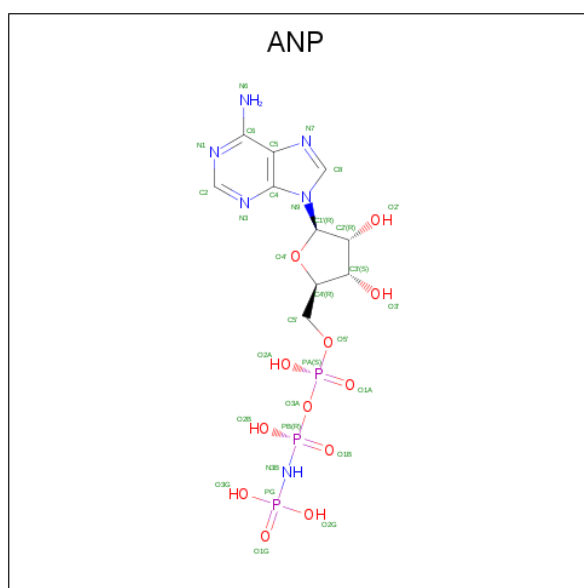
There are 3 unique types of molecules in this entry. The entry contains 4704 atoms, of which 0 are hydrogens and 0 are deuteriums.

In the tables below, the ZeroOcc column contains the number of atoms modelled with zero occupancy, the AltConf column contains the number of residues with at least one atom in alternate conformation and the Trace column contains the number of residues modelled with at most 2 atoms.

- Molecule 1 is a protein called Ribosomal protein S6 kinase alpha-5.

Mol	Chain	Residues	Atoms					ZeroOcc	AltConf	Trace
			Total	C	N	O	S			
1	A	282	Total	C	N	O	S	0	0	0
			2251	1438	387	412	14			
1	B	289	Total	C	N	O	S	0	0	0
			2307	1470	399	424	14			

- Molecule 2 is PHOSPHOAMINOPHOSPHONIC ACID-ADENYLATE ESTER (three-letter code: ANP) (formula: $C_{10}H_{17}N_6O_{12}P_3$).



Mol	Chain	Residues	Atoms					ZeroOcc	AltConf
			Total	C	N	O	P		
2	A	1	Total	C	N	O	P	0	0
			31	10	6	12	3		
2	B	1	Total	C	N	O	P	0	0
			31	10	6	12	3		

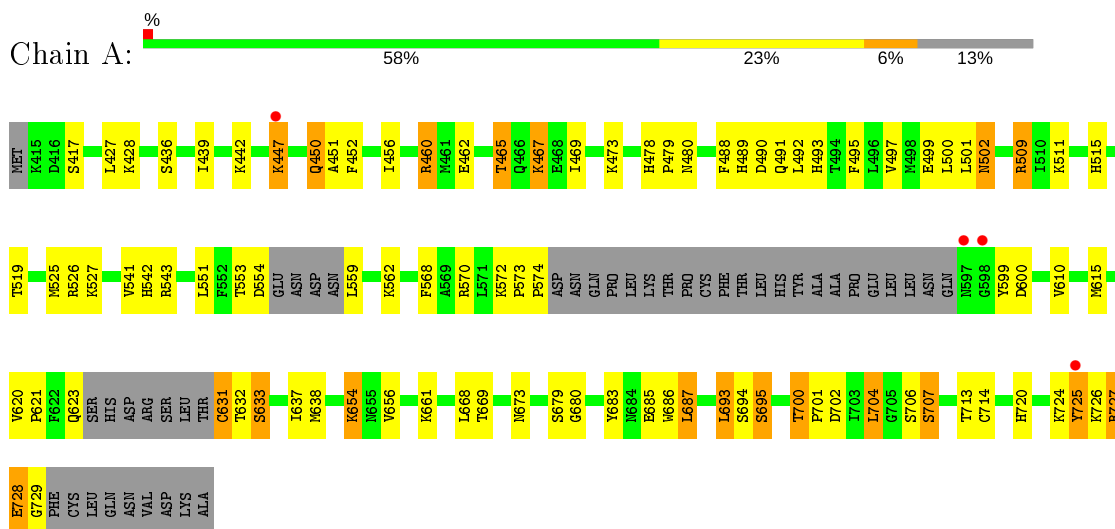
- Molecule 3 is water.

Mol	Chain	Residues	Atoms		ZeroOcc	AltConf
3	A	35	Total 35	O 35	0	0
3	B	49	Total 49	O 49	0	0

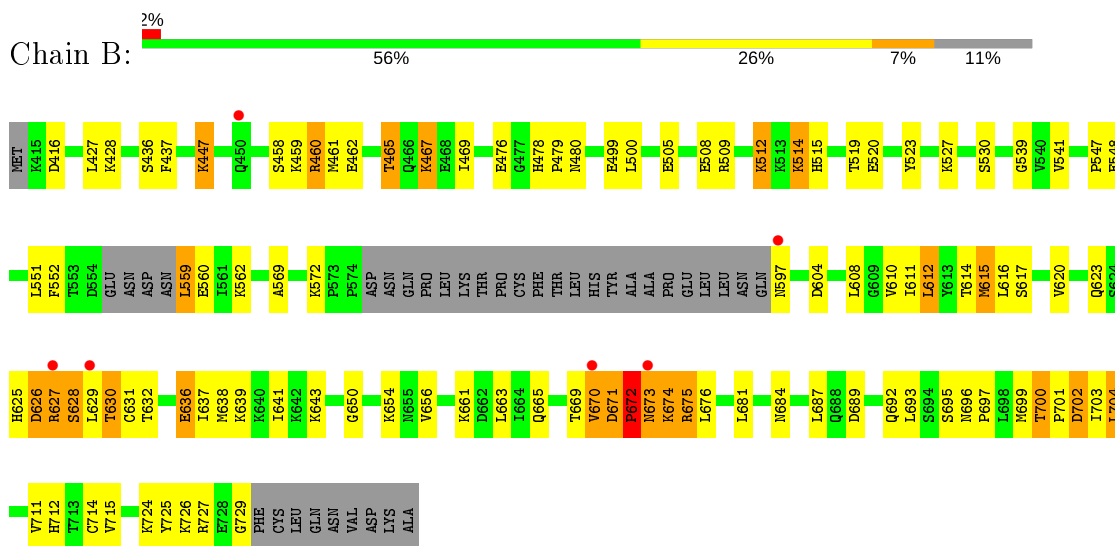
3 Residue-property plots [i](#)

These plots are drawn for all protein, RNA and DNA chains in the entry. The first graphic for a chain summarises the proportions of the various outlier classes displayed in the second graphic. The second graphic shows the sequence view annotated by issues in geometry and electron density. Residues are color-coded according to the number of geometric quality criteria for which they contain at least one outlier: green = 0, yellow = 1, orange = 2 and red = 3 or more. A red dot above a residue indicates a poor fit to the electron density ($RSRZ > 2$). Stretches of 2 or more consecutive residues without any outlier are shown as a green connector. Residues present in the sample, but not in the model, are shown in grey.

- Molecule 1: Ribosomal protein S6 kinase alpha-5



- Molecule 1: Ribosomal protein S6 kinase alpha-5



4 Data and refinement statistics

Property	Value	Source
Space group	P 21 21 21	Depositor
Cell constants a, b, c, α , β , γ	51.56Å 91.25Å 135.46Å 90.00° 90.00° 90.00°	Depositor
Resolution (Å)	43.24 – 2.40 43.24 – 2.40	Depositor EDS
% Data completeness (in resolution range)	(Not available) (43.24-2.40) 90.9 (43.24-2.40)	Depositor EDS
R_{merge}	0.12	Depositor
R_{sym}	0.12	Depositor
$\langle I/\sigma(I) \rangle$ ¹	1.46 (at 2.39Å)	Xtrriage
Refinement program	PHENIX (PHENIX.REFINE)	Depositor
R, R_{free}	0.208 , 0.278 0.201 , 0.267	Depositor DCC
R_{free} test set	1205 reflections (5.13%)	wwPDB-VP
Wilson B-factor (Å ²)	53.5	Xtrriage
Anisotropy	0.414	Xtrriage
Bulk solvent k_{sol} (e/Å ³), B_{sol} (Å ²)	0.34 , 49.2	EDS
L-test for twinning ²	$\langle L \rangle = 0.49$, $\langle L^2 \rangle = 0.32$	Xtrriage
Estimated twinning fraction	No twinning to report.	Xtrriage
F_o, F_c correlation	0.95	EDS
Total number of atoms	4704	wwPDB-VP
Average B, all atoms (Å ²)	63.0	wwPDB-VP

Xtrriage's analysis on translational NCS is as follows: *The largest off-origin peak in the Patterson function is 5.16% of the height of the origin peak. No significant pseudotranslation is detected.*

¹Intensities estimated from amplitudes.

²Theoretical values of $\langle |L| \rangle$, $\langle L^2 \rangle$ for acentric reflections are 0.5, 0.333 respectively for untwinned datasets, and 0.375, 0.2 for perfectly twinned datasets.

5 Model quality [i](#)

5.1 Standard geometry [i](#)

Bond lengths and bond angles in the following residue types are not validated in this section: ANP

The Z score for a bond length (or angle) is the number of standard deviations the observed value is removed from the expected value. A bond length (or angle) with $|Z| > 5$ is considered an outlier worth inspection. RMSZ is the root-mean-square of all Z scores of the bond lengths (or angles).

Mol	Chain	Bond lengths		Bond angles	
		RMSZ	# Z >5	RMSZ	# Z >5
1	A	0.36	0/2297	0.55	0/3083
1	B	0.35	0/2355	0.54	0/3163
All	All	0.36	0/4652	0.54	0/6246

There are no bond length outliers.

There are no bond angle outliers.

There are no chirality outliers.

There are no planarity outliers.

5.2 Too-close contacts [i](#)

In the following table, the Non-H and H(model) columns list the number of non-hydrogen atoms and hydrogen atoms in the chain respectively. The H(added) column lists the number of hydrogen atoms added and optimized by MolProbity. The Clashes column lists the number of clashes within the asymmetric unit, whereas Symm-Clashes lists symmetry related clashes.

Mol	Chain	Non-H	H(model)	H(added)	Clashes	Symm-Clashes
1	A	2251	0	2263	84	0
1	B	2307	0	2316	91	0
2	A	31	0	13	1	0
2	B	31	0	13	3	0
3	A	35	0	0	11	0
3	B	49	0	0	12	0
All	All	4704	0	4605	176	0

The all-atom clashscore is defined as the number of clashes found per 1000 atoms (including hydrogen atoms). The all-atom clashscore for this structure is 19.

All (176) close contacts within the same asymmetric unit are listed below, sorted by their clash

magnitude.

Atom-1	Atom-2	Interatomic distance (Å)	Clash overlap (Å)
1:B:478:HIS:HD2	1:B:480:ASN:H	1.14	0.95
1:A:501:LEU:HD22	1:A:553:THR:HG22	1.49	0.93
1:B:671:ASP:HB3	1:B:672:PRO:CA	1.99	0.92
1:A:439:ILE:HG23	3:A:58:HOH:O	1.69	0.92
1:B:671:ASP:HB3	1:B:672:PRO:HA	1.53	0.90
1:A:478:HIS:HD2	1:A:480:ASN:H	1.18	0.86
1:A:460:ARG:HH11	1:A:460:ARG:HG2	1.41	0.85
1:B:727:ARG:O	1:B:729:GLY:HA2	1.76	0.85
1:B:638:MET:HE1	1:B:724:LYS:HD3	1.62	0.80
1:B:478:HIS:CD2	1:B:480:ASN:H	1.99	0.80
1:A:706:SER:O	1:A:707:SER:HB2	1.84	0.77
1:A:447:LYS:HA	1:A:447:LYS:HE3	1.67	0.77
1:A:478:HIS:CD2	1:A:480:ASN:H	2.03	0.76
1:A:460:ARG:HH11	1:A:460:ARG:CG	1.99	0.75
1:A:728:GLU:N	1:A:729:GLY:HA3	2.00	0.75
1:A:551:LEU:HD21	2:A:400:ANP:H2'	1.69	0.75
1:B:548:GLU:HB3	3:B:80:HOH:O	1.89	0.72
1:B:551:LEU:HD21	2:B:400:ANP:H2'	1.72	0.71
1:B:671:ASP:CB	1:B:672:PRO:HA	2.20	0.71
1:B:610:VAL:O	3:B:84:HOH:O	2.08	0.71
1:A:456:ILE:HD12	3:A:58:HOH:O	1.94	0.67
1:A:509:ARG:HH11	1:A:509:ARG:HG2	1.58	0.67
1:B:623:GLN:HE22	1:B:632:THR:HG22	1.57	0.67
1:A:442:LYS:HE3	1:A:451:ALA:HB1	1.78	0.66
1:A:519:THR:HG23	1:A:694:SER:O	1.95	0.66
1:A:727:ARG:N	1:A:728:GLU:HB2	2.11	0.65
1:B:699:MET:O	1:B:702:ASP:HB2	1.96	0.65
1:A:493:HIS:HD2	3:A:49:HOH:O	1.79	0.65
1:B:700:THR:HG23	1:B:701:PRO:HD3	1.79	0.65
1:A:727:ARG:CB	1:A:728:GLU:HB2	2.27	0.64
1:B:447:LYS:HA	1:B:447:LYS:HE3	1.78	0.64
1:B:458:SER:OG	1:B:460:ARG:HG3	1.97	0.64
1:A:615:MET:O	1:A:700:THR:HG21	1.98	0.64
1:B:665:GLN:O	1:B:669:THR:HB	1.98	0.64
1:A:456:ILE:HB	3:A:58:HOH:O	1.97	0.63
1:A:727:ARG:CA	1:A:728:GLU:HB2	2.29	0.62
1:B:462:GLU:HA	1:B:462:GLU:OE1	1.99	0.62
1:A:417:SER:HB2	1:A:490:ASP:HB3	1.81	0.61
3:A:3:HOH:O	1:B:695:SER:HB2	2.00	0.61
1:B:614:THR:CB	3:B:84:HOH:O	2.49	0.61
1:B:615:MET:O	1:B:700:THR:HG21	2.01	0.60

Continued on next page...

Continued from previous page...

Atom-1	Atom-2	Interatomic distance (Å)	Clash overlap (Å)
1:B:465:THR:HG21	3:B:25:HOH:O	2.00	0.60
1:B:614:THR:HB	3:B:84:HOH:O	2.01	0.60
1:A:499:GLU:HG3	1:A:501:LEU:HD21	1.83	0.59
1:B:436:SER:HA	3:B:15:HOH:O	2.02	0.59
1:A:525:MET:HE3	1:A:615:MET:CE	2.32	0.59
1:A:509:ARG:HH11	1:A:509:ARG:CG	2.15	0.59
1:B:673:ASN:HA	1:B:675:ARG:H	1.68	0.59
1:A:720:HIS:CD2	1:A:724:LYS:HD2	2.39	0.58
1:B:515:HIS:ND1	1:B:697:PRO:HG3	2.19	0.58
1:A:654:LYS:HB2	1:A:654:LYS:NZ	2.19	0.58
1:B:523:TYR:CE2	1:B:527:LYS:HE2	2.39	0.57
1:A:525:MET:HA	1:A:525:MET:HE2	1.86	0.57
1:A:469:ILE:O	1:A:473:LYS:HG3	2.04	0.57
1:A:501:LEU:HD22	1:A:553:THR:CG2	2.29	0.57
1:B:636:GLU:OE2	1:B:636:GLU:HA	2.04	0.57
1:B:632:THR:HG21	3:B:16:HOH:O	2.04	0.56
1:B:467:LYS:C	1:B:467:LYS:HD2	2.25	0.56
1:B:623:GLN:NE2	1:B:632:THR:HG22	2.21	0.56
1:B:671:ASP:CB	1:B:672:PRO:CA	2.77	0.56
1:A:610:VAL:HG13	1:A:621:PRO:HG2	1.87	0.56
1:B:627:ARG:HH21	1:B:650:GLY:HA2	1.71	0.55
1:B:539:GLY:HA2	1:B:572:LYS:HE3	1.89	0.55
1:B:672:PRO:HD2	1:B:674:LYS:HB2	1.89	0.55
1:B:673:ASN:HA	1:B:675:ARG:N	2.21	0.54
1:A:515:HIS:HE1	1:A:695:SER:O	1.90	0.54
1:B:499:GLU:OE2	1:B:562:LYS:HE2	2.08	0.54
1:A:600:ASP:OD2	1:A:726:LYS:HE3	2.08	0.53
1:A:620:VAL:HG21	1:A:714:CYS:HB3	1.90	0.53
1:A:467:LYS:C	1:A:467:LYS:HD2	2.29	0.53
1:A:479:PRO:O	1:A:562:LYS:HE3	2.09	0.53
1:A:572:LYS:HB2	1:A:599:TYR:CZ	2.44	0.53
1:A:706:SER:O	1:A:707:SER:CB	2.57	0.53
1:B:560:GLU:OE2	1:B:560:GLU:HA	2.09	0.53
1:A:511:LYS:HD3	1:A:704:LEU:HB3	1.90	0.52
1:B:672:PRO:O	1:B:673:ASN:HB3	2.09	0.52
1:A:632:THR:O	1:A:633:SER:HB2	2.10	0.52
1:B:671:ASP:HB3	1:B:672:PRO:C	2.30	0.52
1:A:480:ASN:HD21	1:A:527:LYS:HD3	1.75	0.51
1:A:478:HIS:HD2	1:A:480:ASN:N	1.99	0.51
1:B:611:ILE:HA	3:B:84:HOH:O	2.11	0.51
1:A:633:SER:O	1:A:637:ILE:HG13	2.11	0.51

Continued on next page...

Continued from previous page...

Atom-1	Atom-2	Interatomic distance (Å)	Clash overlap (Å)
1:A:488:PHE:HB2	1:A:495:PHE:HB2	1.92	0.51
1:B:447:LYS:HA	1:B:447:LYS:CE	2.41	0.51
1:A:462:GLU:OE1	1:A:462:GLU:HA	2.11	0.50
1:B:465:THR:HG22	3:B:20:HOH:O	2.12	0.50
1:B:547:PRO:HG2	1:B:715:VAL:HG11	1.94	0.50
1:A:515:HIS:CE1	1:A:695:SER:O	2.64	0.50
1:A:656:VAL:O	1:A:661:LYS:NZ	2.44	0.49
1:A:501:LEU:CD2	1:A:553:THR:HG22	2.33	0.49
1:A:465:THR:HG21	3:A:70:HOH:O	2.12	0.49
1:B:416:ASP:HA	3:B:24:HOH:O	2.11	0.49
1:A:559:LEU:HD13	1:A:559:LEU:HA	1.67	0.49
1:A:526:ARG:HD2	3:A:42:HOH:O	2.12	0.48
1:B:519:THR:HG22	1:B:693:LEU:HB2	1.95	0.47
1:A:631:CYS:HB2	1:A:632:THR:H	1.48	0.47
1:B:656:VAL:HB	1:B:661:LYS:HE3	1.96	0.47
1:A:509:ARG:CG	1:A:509:ARG:NH1	2.74	0.47
1:A:632:THR:O	1:A:633:SER:CB	2.62	0.47
1:B:670:VAL:HA	1:B:671:ASP:OD1	2.14	0.47
1:B:478:HIS:HD2	1:B:480:ASN:N	1.97	0.47
1:A:679:SER:HA	1:A:680:GLY:HA2	1.50	0.47
1:B:478:HIS:HE1	1:B:530:SER:OG	1.97	0.47
1:B:623:GLN:HE22	1:B:632:THR:H	1.62	0.47
1:A:497:VAL:HG23	3:A:51:HOH:O	2.14	0.46
1:B:437:PHE:HB3	1:B:458:SER:HB3	1.97	0.46
1:B:515:HIS:CE1	1:B:695:SER:O	2.69	0.46
1:B:509:ARG:HG3	1:B:552:PHE:CD2	2.49	0.46
1:B:629:LEU:HG	1:B:630:THR:OG1	2.16	0.46
1:B:630:THR:HG22	1:B:631:CYS:O	2.16	0.46
1:A:724:LYS:O	1:A:728:GLU:HG3	2.16	0.46
1:B:638:MET:HE1	1:B:724:LYS:CD	2.40	0.46
1:A:543:ARG:NH1	1:A:568:PHE:O	2.49	0.45
1:A:525:MET:CE	1:A:615:MET:CE	2.93	0.45
1:A:623:GLN:C	3:A:55:HOH:O	2.54	0.45
1:B:641:ILE:O	1:B:670:VAL:HG21	2.16	0.45
1:B:673:ASN:H	1:B:674:LYS:HB2	1.82	0.45
1:B:673:ASN:N	1:B:674:LYS:HB2	2.31	0.45
1:B:669:THR:HG21	1:B:674:LYS:HB3	1.99	0.45
1:B:505:GLU:OE2	1:B:548:GLU:HB2	2.16	0.44
1:B:663:LEU:HD13	1:B:684:ASN:CG	2.37	0.44
1:B:509:ARG:HH12	1:B:559:LEU:HD21	1.81	0.44
1:B:465:THR:O	1:B:469:ILE:HG13	2.18	0.44

Continued on next page...

Continued from previous page...

Atom-1	Atom-2	Interatomic distance (Å)	Clash overlap (Å)
1:B:508:GLU:O	1:B:512:LYS:HB2	2.17	0.44
1:A:489:HIS:CE1	3:A:32:HOH:O	2.71	0.44
1:B:612:LEU:HD22	1:B:616:LEU:HG	1.98	0.44
1:B:623:GLN:NE2	1:B:632:THR:H	2.16	0.44
1:B:673:ASN:CG	1:B:673:ASN:O	2.57	0.44
1:B:617:SER:O	1:B:703:ILE:HD12	2.17	0.44
1:B:515:HIS:HE1	1:B:695:SER:O	2.02	0.43
1:A:728:GLU:N	1:A:729:GLY:CA	2.74	0.43
2:B:400:ANP:H5'1	3:B:76:HOH:O	2.18	0.43
1:A:685:GLU:HG2	1:A:686:TRP:N	2.34	0.43
1:A:460:ARG:CG	1:A:460:ARG:NH1	2.67	0.43
1:A:573:PRO:HA	1:A:574:PRO:HD2	1.81	0.43
1:B:611:ILE:O	1:B:615:MET:HB2	2.19	0.43
1:A:668:LEU:HA	1:A:668:LEU:HD23	1.82	0.42
1:A:680:GLY:HA3	1:A:683:TYR:CD2	2.54	0.42
1:A:728:GLU:HB3	1:A:729:GLY:CA	2.49	0.42
1:A:638:MET:HE1	1:A:724:LYS:NZ	2.35	0.42
1:A:638:MET:HG3	1:A:725:TYR:HB2	2.00	0.42
1:B:626:ASP:O	1:B:626:ASP:CG	2.57	0.42
1:A:541:VAL:CG2	1:A:570:ARG:HB2	2.50	0.42
1:B:559:LEU:HD22	1:B:559:LEU:HA	1.70	0.42
1:B:638:MET:HG3	1:B:725:TYR:HB2	2.02	0.42
1:A:519:THR:HG22	1:A:693:LEU:HB2	2.01	0.42
1:B:478:HIS:CD2	1:B:479:PRO:HD2	2.55	0.42
1:B:639:LYS:HB2	1:B:639:LYS:HE2	1.55	0.42
1:A:727:ARG:HA	1:A:727:ARG:HD2	1.57	0.42
1:A:686:TRP:HE3	1:A:687:LEU:HD13	1.85	0.42
1:A:638:MET:HE1	1:A:724:LYS:HZ3	1.85	0.42
1:B:632:THR:HG23	1:B:637:ILE:HG13	2.01	0.42
1:B:704:LEU:HD12	1:B:704:LEU:HA	1.91	0.42
1:A:499:GLU:HG3	1:A:501:LEU:CD2	2.48	0.41
1:A:502:ASN:HB2	1:A:554:ASP:OD2	2.21	0.41
1:B:459:LYS:O	1:B:462:GLU:HB2	2.20	0.41
1:B:726:LYS:HA	1:B:726:LYS:HD2	1.71	0.41
1:A:491:GLN:HG3	3:A:1:HOH:O	2.19	0.41
1:B:712:HIS:CE1	3:B:80:HOH:O	2.73	0.41
1:B:461:MET:O	1:B:465:THR:HG23	2.20	0.41
1:B:467:LYS:HB3	1:B:467:LYS:HE2	1.86	0.41
1:A:542:HIS:O	1:A:543:ARG:HB2	2.20	0.41
1:A:685:GLU:HG2	1:A:686:TRP:H	1.86	0.41
1:B:551:LEU:CD2	2:B:400:ANP:H2'	2.45	0.41

Continued on next page...

Continued from previous page...

Atom-1	Atom-2	Interatomic distance (Å)	Clash overlap (Å)
1:B:541:VAL:O	1:B:569:ALA:HA	2.21	0.41
1:B:627:ARG:O	1:B:628:SER:HB3	2.21	0.41
1:A:509:ARG:HH21	1:A:559:LEU:HG	1.86	0.41
1:A:727:ARG:HB2	1:A:728:GLU:HB2	2.01	0.41
1:B:711:VAL:O	1:B:715:VAL:HG23	2.20	0.41
1:B:447:LYS:HD2	1:B:447:LYS:N	2.37	0.40
1:A:462:GLU:HA	1:A:465:THR:HG23	2.03	0.40
1:B:604:ASP:O	1:B:608:LEU:HG	2.20	0.40
1:A:450:GLN:HB3	1:A:452:PHE:CE2	2.57	0.40
1:A:700:THR:HG23	1:A:701:PRO:HD3	2.03	0.40
1:B:514:LYS:HD3	1:B:514:LYS:HA	1.82	0.40
1:B:620:VAL:HG21	1:B:714:CYS:HB3	2.03	0.40

There are no symmetry-related clashes.

5.3 Torsion angles [i](#)

5.3.1 Protein backbone [i](#)

In the following table, the Percentiles column shows the percent Ramachandran outliers of the chain as a percentile score with respect to all X-ray entries followed by that with respect to entries of similar resolution.

The Analysed column shows the number of residues for which the backbone conformation was analysed, and the total number of residues.

Mol	Chain	Analysed	Favoured	Allowed	Outliers	Percentiles
1	A	274/325 (84%)	261 (95%)	10 (4%)	3 (1%)	14 20
1	B	283/325 (87%)	261 (92%)	17 (6%)	5 (2%)	8 10
All	All	557/650 (86%)	522 (94%)	27 (5%)	8 (1%)	11 15

All (8) Ramachandran outliers are listed below:

Mol	Chain	Res	Type
1	A	633	SER
1	A	707	SER
1	B	671	ASP
1	B	673	ASN
1	A	728	GLU
1	B	628	SER

Continued on next page...

Continued from previous page...

Mol	Chain	Res	Type
1	B	672	PRO
1	B	674	LYS

5.3.2 Protein sidechains [i](#)

In the following table, the Percentiles column shows the percent sidechain outliers of the chain as a percentile score with respect to all X-ray entries followed by that with respect to entries of similar resolution.

The Analysed column shows the number of residues for which the sidechain conformation was analysed, and the total number of residues.

Mol	Chain	Analysed	Rotameric	Outliers	Percentiles
1	A	250/290 (86%)	225 (90%)	25 (10%)	7 11
1	B	257/290 (89%)	223 (87%)	34 (13%)	4 4
All	All	507/580 (87%)	448 (88%)	59 (12%)	5 7

All (59) residues with a non-rotameric sidechain are listed below:

Mol	Chain	Res	Type
1	A	427	LEU
1	A	428	LYS
1	A	436	SER
1	A	447	LYS
1	A	450	GLN
1	A	460	ARG
1	A	465	THR
1	A	467	LYS
1	A	492	LEU
1	A	500	LEU
1	A	502	ASN
1	A	509	ARG
1	A	631	CYS
1	A	654	LYS
1	A	669	THR
1	A	673	ASN
1	A	687	LEU
1	A	693	LEU
1	A	695	SER
1	A	700	THR
1	A	702	ASP

Continued on next page...

Continued from previous page...

Mol	Chain	Res	Type
1	A	704	LEU
1	A	713	THR
1	A	725	TYR
1	A	727	ARG
1	B	427	LEU
1	B	428	LYS
1	B	447	LYS
1	B	460	ARG
1	B	465	THR
1	B	467	LYS
1	B	476	GLU
1	B	500	LEU
1	B	512	LYS
1	B	514	LYS
1	B	520	GLU
1	B	559	LEU
1	B	597	ASN
1	B	612	LEU
1	B	615	MET
1	B	625	HIS
1	B	626	ASP
1	B	627	ARG
1	B	630	THR
1	B	636	GLU
1	B	643	LYS
1	B	654	LYS
1	B	670	VAL
1	B	672	PRO
1	B	675	ARG
1	B	676	LEU
1	B	681	LEU
1	B	687	LEU
1	B	689	ASP
1	B	692	GLN
1	B	696	ASN
1	B	700	THR
1	B	702	ASP
1	B	704	LEU

Some sidechains can be flipped to improve hydrogen bonding and reduce clashes. All (21) such sidechains are listed below:

Mol	Chain	Res	Type
1	A	422	HIS
1	A	478	HIS
1	A	485	HIS
1	A	489	HIS
1	A	502	ASN
1	A	515	HIS
1	A	549	ASN
1	A	655	ASN
1	A	684	ASN
1	A	692	GLN
1	A	712	HIS
1	A	723	ASN
1	B	478	HIS
1	B	489	HIS
1	B	549	ASN
1	B	597	ASN
1	B	623	GLN
1	B	625	HIS
1	B	655	ASN
1	B	684	ASN
1	B	723	ASN

5.3.3 RNA [i](#)

There are no RNA molecules in this entry.

5.4 Non-standard residues in protein, DNA, RNA chains [i](#)

There are no non-standard protein/DNA/RNA residues in this entry.

5.5 Carbohydrates [i](#)

There are no carbohydrates in this entry.

5.6 Ligand geometry [i](#)

2 ligands are modelled in this entry.

In the following table, the Counts columns list the number of bonds (or angles) for which Mogul statistics could be retrieved, the number of bonds (or angles) that are observed in the model and the number of bonds (or angles) that are defined in the Chemical Component Dictionary. The

Link column lists molecule types, if any, to which the group is linked. The Z score for a bond length (or angle) is the number of standard deviations the observed value is removed from the expected value. A bond length (or angle) with $|Z| > 2$ is considered an outlier worth inspection. RMSZ is the root-mean-square of all Z scores of the bond lengths (or angles).

Mol	Type	Chain	Res	Link	Bond lengths			Bond angles		
					Counts	RMSZ	# Z > 2	Counts	RMSZ	# Z > 2
2	ANP	B	400	-	29,33,33	3.99	13 (44%)	31,52,52	1.46	6 (19%)
2	ANP	A	400	-	29,33,33	4.02	12 (41%)	31,52,52	1.46	4 (12%)

In the following table, the Chirals column lists the number of chiral outliers, the number of chiral centers analysed, the number of these observed in the model and the number defined in the Chemical Component Dictionary. Similar counts are reported in the Torsion and Rings columns. '1' means no outliers of that kind were identified.

Mol	Type	Chain	Res	Link	Chirals	Torsions	Rings
2	ANP	B	400	-	-	8/14/38/38	0/3/3/3
2	ANP	A	400	-	-	5/14/38/38	0/3/3/3

All (25) bond length outliers are listed below:

Mol	Chain	Res	Type	Atoms	Z	Observed(Å)	Ideal(Å)
2	A	400	ANP	PG-O1G	8.60	1.59	1.46
2	A	400	ANP	PB-O1B	8.58	1.59	1.46
2	B	400	ANP	PB-O1B	8.53	1.59	1.46
2	B	400	ANP	PG-O1G	8.48	1.59	1.46
2	A	400	ANP	PG-O2G	8.38	1.79	1.56
2	A	400	ANP	PB-O2B	8.35	1.79	1.56
2	A	400	ANP	PG-O3G	8.34	1.79	1.56
2	B	400	ANP	PG-O3G	8.33	1.79	1.56
2	B	400	ANP	PG-O2G	8.27	1.79	1.56
2	B	400	ANP	PB-O2B	8.19	1.78	1.56
2	A	400	ANP	PA-O2A	5.16	1.79	1.55
2	B	400	ANP	PA-O2A	5.14	1.79	1.55
2	B	400	ANP	PG-N3B	4.90	1.76	1.63
2	A	400	ANP	PG-N3B	4.89	1.76	1.63
2	B	400	ANP	PB-N3B	4.87	1.76	1.63
2	A	400	ANP	PB-N3B	4.83	1.76	1.63
2	A	400	ANP	C5-C4	2.87	1.48	1.40
2	B	400	ANP	C5-C4	2.79	1.48	1.40
2	A	400	ANP	PB-O3A	2.63	1.62	1.59
2	A	400	ANP	PA-O1A	2.60	1.60	1.50
2	B	400	ANP	PA-O1A	2.55	1.59	1.50
2	B	400	ANP	PB-O3A	2.53	1.62	1.59

Continued on next page...

Continued from previous page...

Mol	Chain	Res	Type	Atoms	Z	Observed(Å)	Ideal(Å)
2	B	400	ANP	O4'-C1'	2.15	1.44	1.41
2	A	400	ANP	C2-N3	2.09	1.35	1.32
2	B	400	ANP	C2-N3	2.02	1.35	1.32

All (10) bond angle outliers are listed below:

Mol	Chain	Res	Type	Atoms	Z	Observed(°)	Ideal(°)
2	A	400	ANP	PA-O3A-PB	-3.76	119.38	132.62
2	B	400	ANP	C3'-C2'-C1'	3.63	106.45	100.98
2	A	400	ANP	N3-C2-N1	-3.16	123.73	128.68
2	B	400	ANP	N3-C2-N1	-3.07	123.87	128.68
2	A	400	ANP	C4-C5-N7	-3.02	106.26	109.40
2	A	400	ANP	C3'-C2'-C1'	2.89	105.33	100.98
2	B	400	ANP	PA-O3A-PB	-2.58	123.54	132.62
2	B	400	ANP	O1B-PB-N3B	-2.25	108.46	111.77
2	B	400	ANP	C4-C5-N7	-2.20	107.11	109.40
2	B	400	ANP	O3G-PG-O1G	-2.17	108.00	113.45

There are no chirality outliers.

All (13) torsion outliers are listed below:

Mol	Chain	Res	Type	Atoms
2	B	400	ANP	PB-N3B-PG-O1G
2	B	400	ANP	PG-N3B-PB-O1B
2	B	400	ANP	C5'-O5'-PA-O2A
2	B	400	ANP	C5'-O5'-PA-O3A
2	A	400	ANP	PB-N3B-PG-O1G
2	A	400	ANP	PA-O3A-PB-O1B
2	A	400	ANP	PA-O3A-PB-O2B
2	A	400	ANP	O4'-C4'-C5'-O5'
2	A	400	ANP	C3'-C4'-C5'-O5'
2	B	400	ANP	C4'-C5'-O5'-PA
2	B	400	ANP	C5'-O5'-PA-O1A
2	B	400	ANP	PG-N3B-PB-O3A
2	B	400	ANP	O4'-C4'-C5'-O5'

There are no ring outliers.

2 monomers are involved in 4 short contacts:

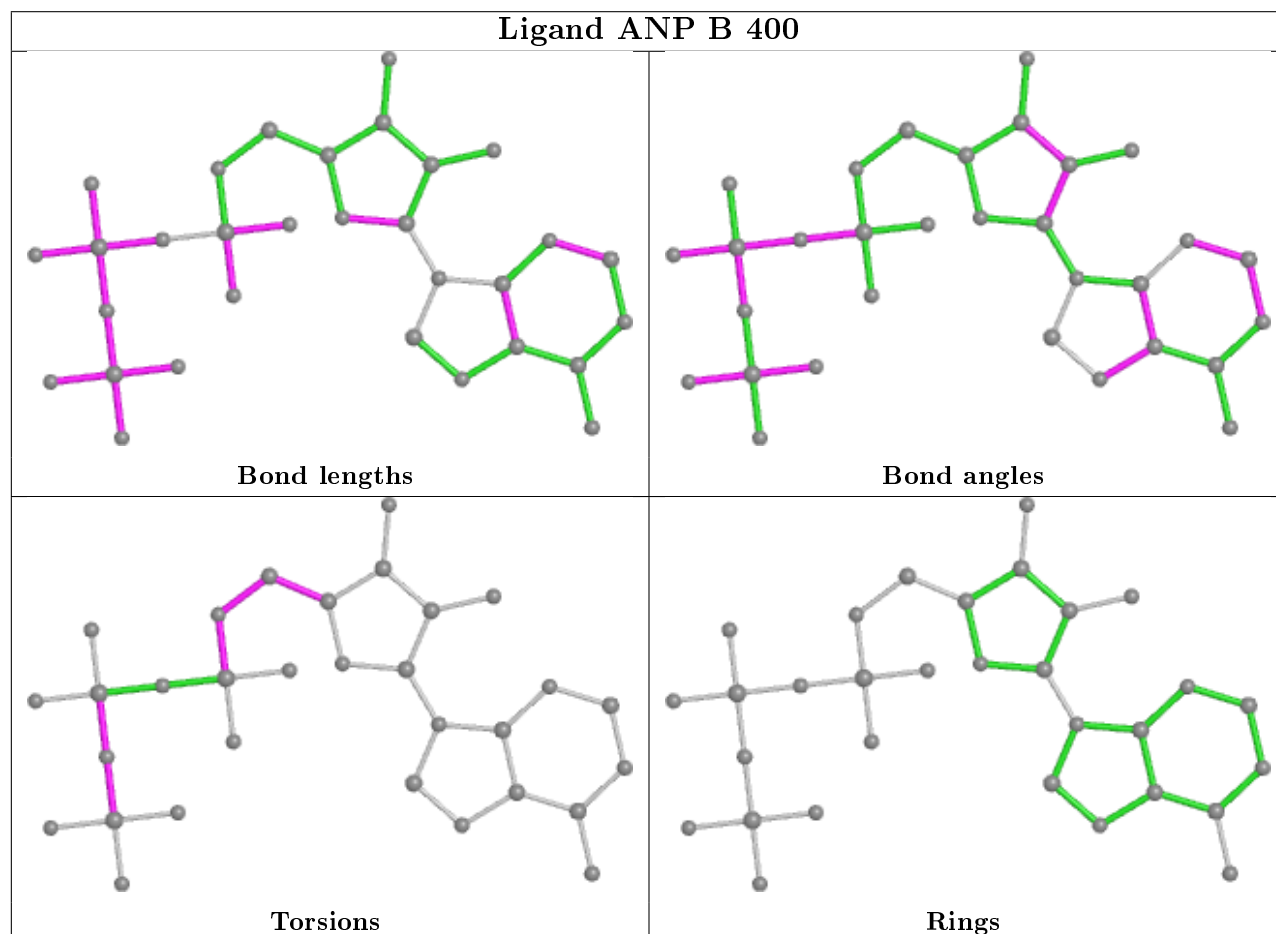
Mol	Chain	Res	Type	Clashes	Symm-Clashes
2	B	400	ANP	3	0

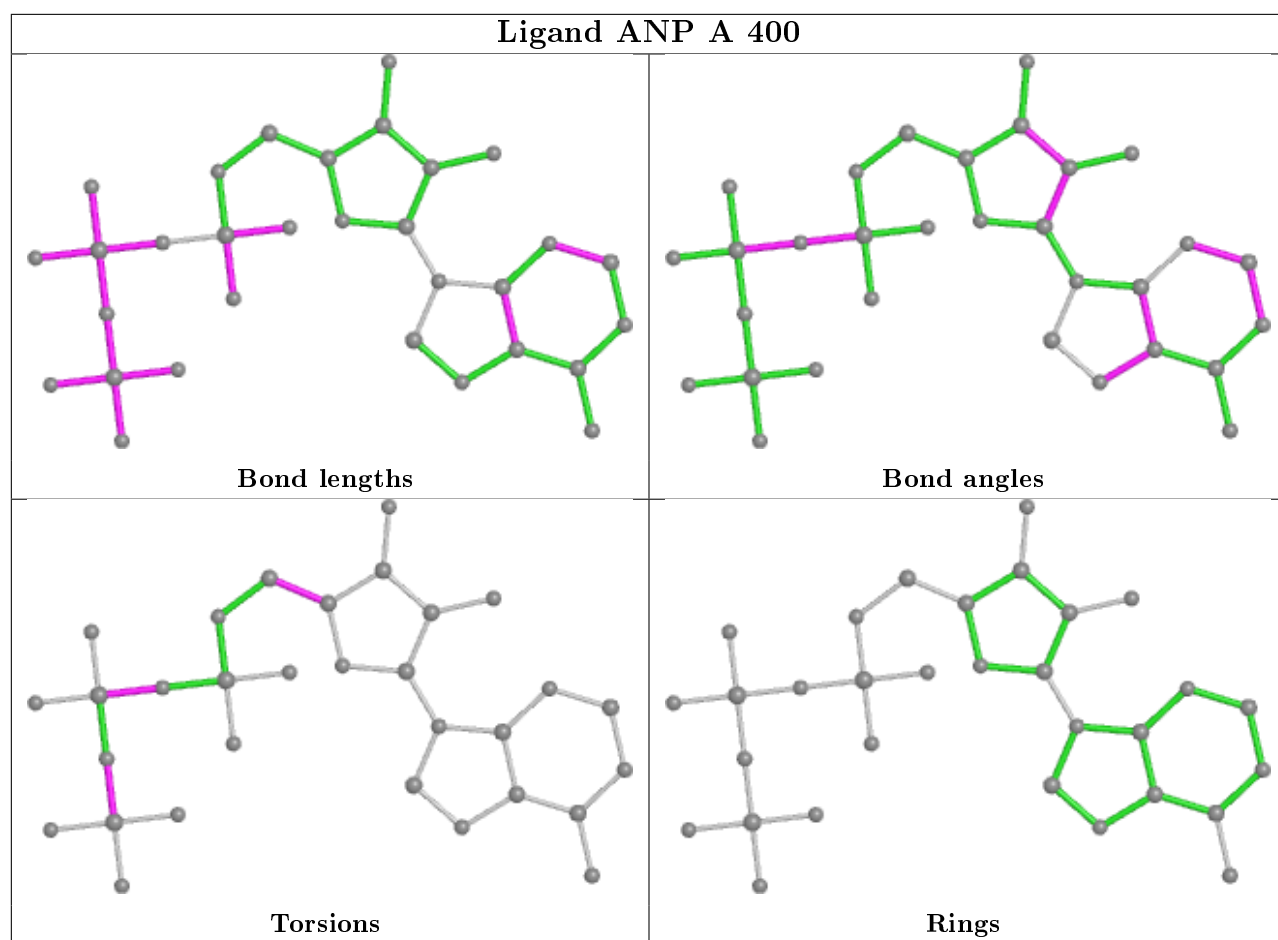
Continued on next page...

Continued from previous page...

Mol	Chain	Res	Type	Clashes	Symm-Clashes
2	A	400	ANP	1	0

The following is a two-dimensional graphical depiction of Mogul quality analysis of bond lengths, bond angles, torsion angles, and ring geometry for all instances of the Ligand of Interest. In addition, ligands with molecular weight > 250 and outliers as shown on the validation Tables will also be included. For torsion angles, if less than 5% of the Mogul distribution of torsion angles is within 10 degrees of the torsion angle in question, then that torsion angle is considered an outlier. Any bond that is central to one or more torsion angles identified as an outlier by Mogul will be highlighted in the graph. For rings, the root-mean-square deviation (RMSD) between the ring in question and similar rings identified by Mogul is calculated over all ring torsion angles. If the average RMSD is greater than 60 degrees and the minimal RMSD between the ring in question and any Mogul-identified rings is also greater than 60 degrees, then that ring is considered an outlier. The outliers are highlighted in purple. The color gray indicates Mogul did not find sufficient equivalents in the CSD to analyse the geometry.





5.7 Other polymers [i](#)

There are no such residues in this entry.

5.8 Polymer linkage issues [i](#)

There are no chain breaks in this entry.

6 Fit of model and data [i](#)

6.1 Protein, DNA and RNA chains [i](#)

In the following table, the column labelled ‘#RSRZ> 2’ contains the number (and percentage) of RSRZ outliers, followed by percent RSRZ outliers for the chain as percentile scores relative to all X-ray entries and entries of similar resolution. The OWAB column contains the minimum, median, 95th percentile and maximum values of the occupancy-weighted average B-factor per residue. The column labelled ‘Q< 0.9’ lists the number of (and percentage) of residues with an average occupancy less than 0.9.

Mol	Chain	Analysed	<RSRZ>	#RSRZ>2	OWAB(Å ²)	Q<0.9
1	A	282/325 (86%)	0.10	4 (1%) 75 73	42, 60, 84, 101	0
1	B	289/325 (88%)	0.11	6 (2%) 63 61	42, 60, 91, 110	0
All	All	571/650 (87%)	0.11	10 (1%) 68 66	42, 60, 87, 110	0

All (10) RSRZ outliers are listed below:

Mol	Chain	Res	Type	RSRZ
1	B	629	LEU	3.4
1	A	447	LYS	3.0
1	B	673	ASN	2.7
1	B	670	VAL	2.6
1	A	598	GLY	2.5
1	A	597	ASN	2.5
1	B	450	GLN	2.4
1	B	627	ARG	2.2
1	A	725	TYR	2.0
1	B	597	ASN	2.0

6.2 Non-standard residues in protein, DNA, RNA chains [i](#)

There are no non-standard protein/DNA/RNA residues in this entry.

6.3 Carbohydrates [i](#)

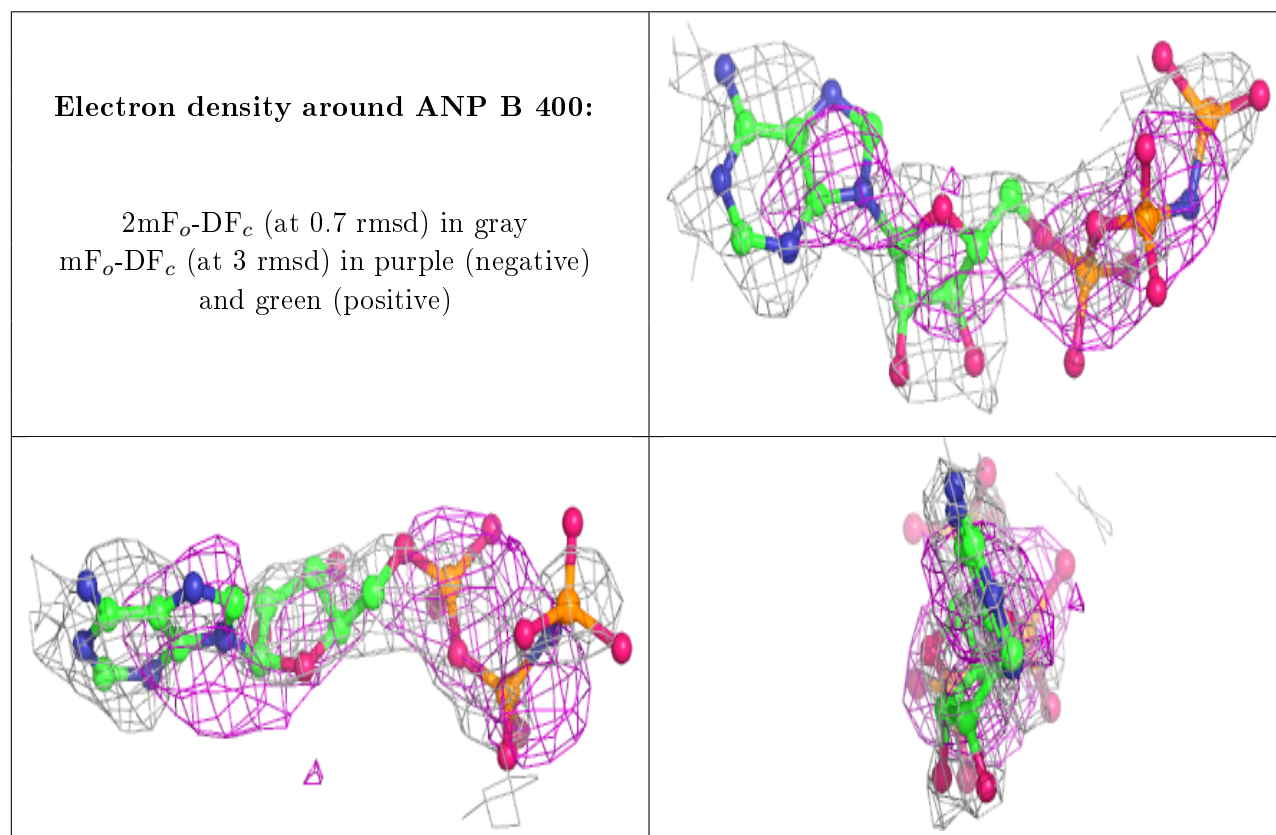
There are no carbohydrates in this entry.

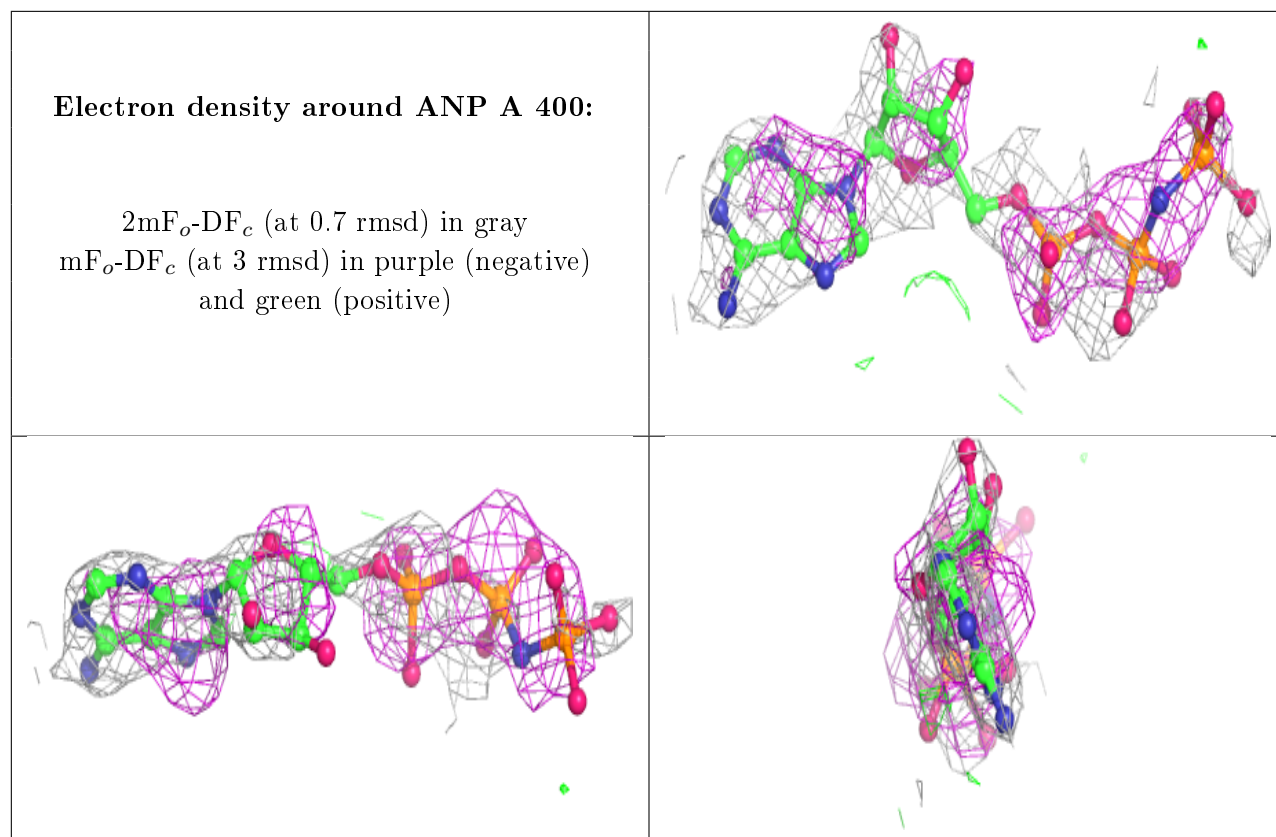
6.4 Ligands [i](#)

In the following table, the Atoms column lists the number of modelled atoms in the group and the number defined in the chemical component dictionary. The B-factors column lists the minimum, median, 95th percentile and maximum values of B factors of atoms in the group. The column labelled 'Q<0.9' lists the number of atoms with occupancy less than 0.9.

Mol	Type	Chain	Res	Atoms	RSCC	RSR	B-factors(Å ²)	Q<0.9
2	ANP	B	400	31/31	0.72	0.47	65,89,126,131	0
2	ANP	A	400	31/31	0.73	0.45	53,87,122,134	0

The following is a graphical depiction of the model fit to experimental electron density of all instances of the Ligand of Interest. In addition, ligands with molecular weight > 250 and outliers as shown on the geometry validation Tables will also be included. Each fit is shown from different orientation to approximate a three-dimensional view.





6.5 Other polymers [i](#)

There are no such residues in this entry.