



## Full wwPDB EM Validation Report ⓘ

Feb 24, 2024 – 02:03 PM EST

PDB ID : 7KRP  
EMDB ID : EMD-23009  
Title : Structure of SARS-CoV-2 backtracked complex complex bound to nsp13 heli-  
case - BTC (local refinement)  
Authors : Chen, J.; Malone, B.; Campbell, E.A.; Darst, S.A.  
Deposited on : 2020-11-20  
Resolution : 3.20 Å(reported)

This is a Full wwPDB EM Validation Report for a publicly released PDB entry.

We welcome your comments at [validation@mail.wwpdb.org](mailto:validation@mail.wwpdb.org)

A user guide is available at

<https://www.wwpdb.org/validation/2017/EMValidationReportHelp>

with specific help available everywhere you see the ⓘ symbol.

The types of validation reports are described at

<http://www.wwpdb.org/validation/2017/FAQs#types>.

---

The following versions of software and data (see [references ⓘ](#)) were used in the production of this report:

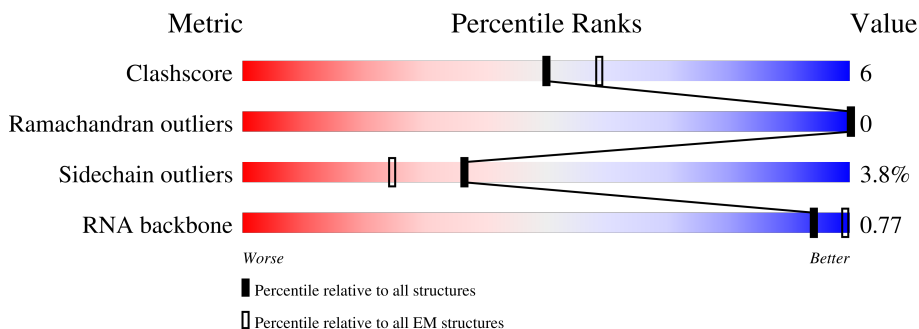
EMDB validation analysis : 0.0.1.dev70  
Mogul : 1.8.5 (274361), CSD as541be (2020)  
MolProbity : 4.02b-467  
buster-report : 1.1.7 (2018)  
Percentile statistics : 20191225.v01 (using entries in the PDB archive December 25th 2019)  
MapQ : 1.9.13  
Ideal geometry (proteins) : Engh & Huber (2001)  
Ideal geometry (DNA, RNA) : Parkinson et al. (1996)  
Validation Pipeline (wwPDB-VP) : 2.36

# 1 Overall quality at a glance

The following experimental techniques were used to determine the structure:  
*ELECTRON MICROSCOPY*

The reported resolution of this entry is 3.20 Å.

Percentile scores (ranging between 0-100) for global validation metrics of the entry are shown in the following graphic. The table shows the number of entries on which the scores are based.



Metric	Whole archive (#Entries)	EM structures (#Entries)
Clashscore	158937	4297
Ramachandran outliers	154571	4023
Sidechain outliers	154315	3826
RNA backbone	4643	859

The table below summarises the geometric issues observed across the polymeric chains and their fit to the map. The red, orange, yellow and green segments of the bar indicate the fraction of residues that contain outliers for  $\geq 3$ , 2, 1 and 0 types of geometric quality criteria respectively. A grey segment represents the fraction of residues that are not modelled. The numeric value for each fraction is indicated below the corresponding segment, with a dot representing fractions  $\leq 5\%$ . The upper red bar (where present) indicates the fraction of residues that have poor fit to the EM map (all-atom inclusion  $< 40\%$ ). The numeric value is given above the bar.

Mol	Chain	Length	Quality of chain
1	A	932	
2	B	199	
2	D	199	
3	C	88	
4	P	40	
5	T	55	

The following table lists non-polymeric compounds, carbohydrate monomers and non-standard residues in protein, DNA, RNA chains that are outliers for geometric or electron-density-fit criteria:

<b>Mol</b>	<b>Type</b>	<b>Chain</b>	<b>Res</b>	<b>Chirality</b>	<b>Geometry</b>	<b>Clashes</b>	<b>Electron density</b>
9	1N7	A	1005	X	-	-	-

## 2 Entry composition [i](#)

There are 9 unique types of molecules in this entry. The entry contains 12561 atoms, of which 0 are hydrogens and 0 are deuteriums.

In the tables below, the AltConf column contains the number of residues with at least one atom in alternate conformation and the Trace column contains the number of residues modelled with at most 2 atoms.

- Molecule 1 is a protein called RNA-directed RNA polymerase.

Mol	Chain	Residues	Atoms					AltConf	Trace
			Total	C	N	O	S		
1	A	927	7470	4770	1253	1393	54	0	0

- Molecule 2 is a protein called Non-structural protein 8.

Mol	Chain	Residues	Atoms					AltConf	Trace
			Total	C	N	O	S		
2	B	186	1416	889	242	274	11	0	0
2	D	185	1427	895	243	278	11	0	0

There are 2 discrepancies between the modelled and reference sequences:

Chain	Residue	Modelled	Actual	Comment	Reference
B	0	MET	-	initiating methionine	UNP P0DTD1
D	0	MET	-	initiating methionine	UNP P0DTD1

- Molecule 3 is a protein called Non-structural protein 7.

Mol	Chain	Residues	Atoms					AltConf	Trace
			Total	C	N	O	S		
3	C	75	576	362	94	113	7	0	0

There are 5 discrepancies between the modelled and reference sequences:

Chain	Residue	Modelled	Actual	Comment	Reference
C	-4	GLY	-	expression tag	UNP P0DTD1
C	-3	PRO	-	expression tag	UNP P0DTD1
C	-2	VAL	-	expression tag	UNP P0DTD1
C	-1	ASP	-	expression tag	UNP P0DTD1
C	0	MET	-	expression tag	UNP P0DTD1

- Molecule 4 is a RNA chain called RNA (37-MER).

Mol	Chain	Residues	Atoms					AltConf	Trace
			Total	C	N	O	P		
4	P	37	776	348	132	259	37	0	0

- Molecule 5 is a RNA chain called RNA (36-MER).

Mol	Chain	Residues	Atoms					AltConf	Trace
			Total	C	N	O	P		
5	T	36	769	344	138	251	36	0	0

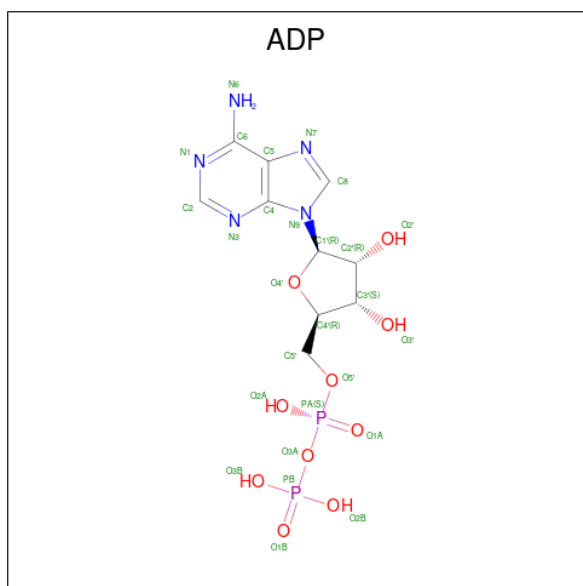
- Molecule 6 is ZINC ION (three-letter code: ZN) (formula: Zn).

Mol	Chain	Residues	Atoms		AltConf
			Total	Zn	
6	A	2	2	2	0

- Molecule 7 is MAGNESIUM ION (three-letter code: MG) (formula: Mg).

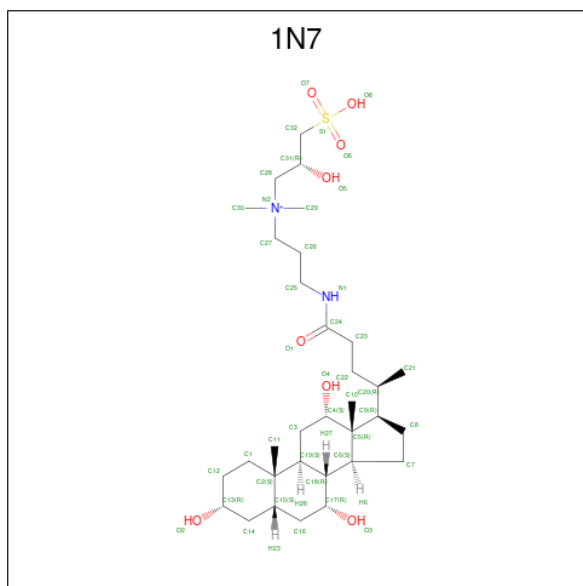
Mol	Chain	Residues	Atoms		AltConf
			Total	Mg	
7	A	1	1	1	0

- Molecule 8 is ADENOSINE-5'-DIPHOSPHATE (three-letter code: ADP) (formula:  $C_{10}H_{15}N_5O_{10}P_2$ ).



Mol	Chain	Residues	Atoms					AltConf
			Total	C	N	O	P	
8	A	1	27	10	5	10	2	0

- Molecule 9 is CHAPSO (three-letter code: 1N7) (formula:  $C_{32}H_{59}N_2O_8S$ ).

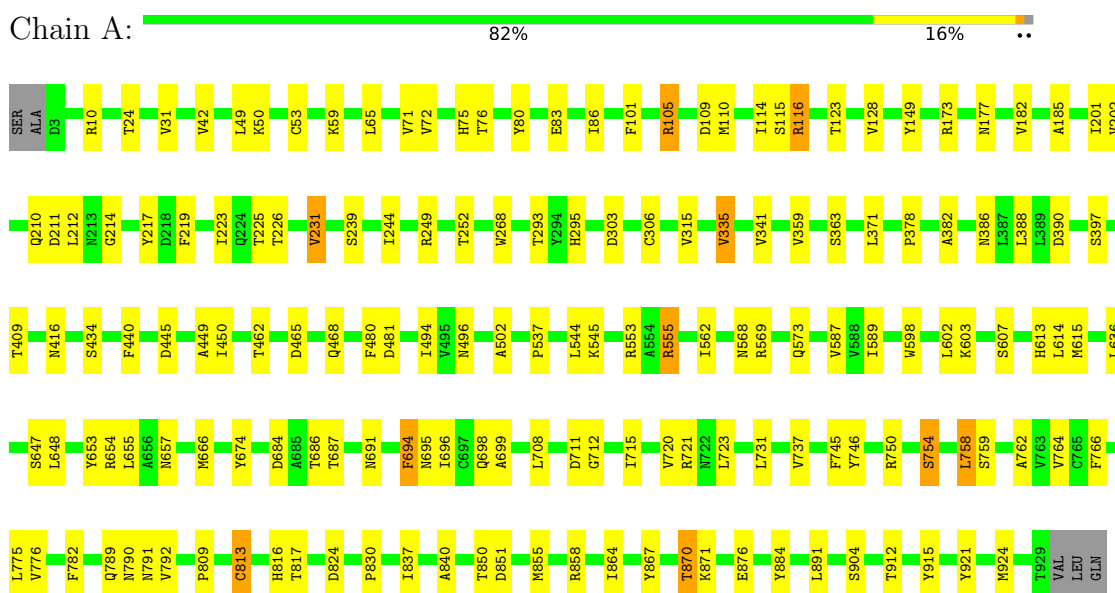


Mol	Chain	Residues	Atoms				AltConf
9	A	1	Total	C	N	O	0
			35	29	2	4	
9	A	1	Total	C	O		0
			26	23	3		
9	D	1	Total	C	N	O	0
			36	30	2	4	

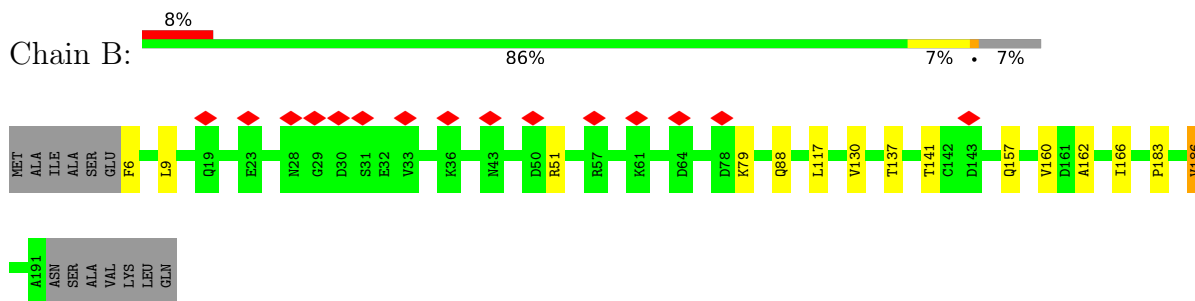
### 3 Residue-property plots

These plots are drawn for all protein, RNA, DNA and oligosaccharide chains in the entry. The first graphic for a chain summarises the proportions of the various outlier classes displayed in the second graphic. The second graphic shows the sequence view annotated by issues in geometry and atom inclusion in map density. Residues are color-coded according to the number of geometric quality criteria for which they contain at least one outlier: green = 0, yellow = 1, orange = 2 and red = 3 or more. A red diamond above a residue indicates a poor fit to the EM map for this residue (all-atom inclusion < 40%). Stretches of 2 or more consecutive residues without any outlier are shown as a green connector. Residues present in the sample, but not in the model, are shown in grey.

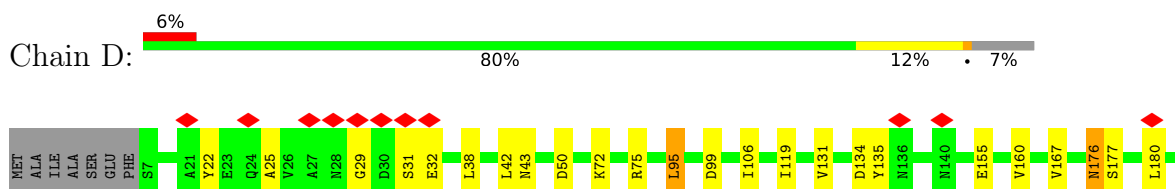
- Molecule 1: RNA-directed RNA polymerase

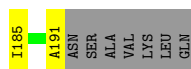


- Molecule 2: Non-structural protein 8

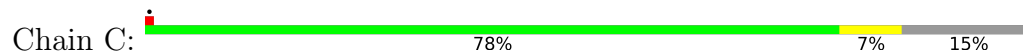


- Molecule 2: Non-structural protein 8





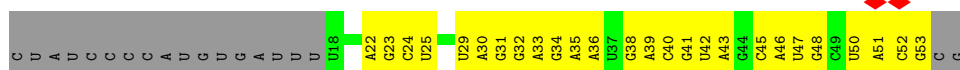
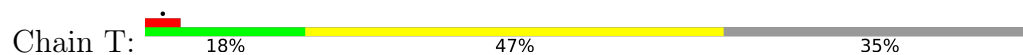
- Molecule 3: Non-structural protein 7



- Molecule 4: RNA (37-MER)



- Molecule 5: RNA (36-MER)





## 4 Experimental information

Property	Value	Source
EM reconstruction method	SINGLE PARTICLE	Depositor
Imposed symmetry	POINT, Not provided	
Number of particles used	871163	Depositor
Resolution determination method	FSC 0.143 CUT-OFF	Depositor
CTF correction method	PHASE FLIPPING AND AMPLITUDE CORRECTION	Depositor
Microscope	FEI TITAN KRIOS	Depositor
Voltage (kV)	300	Depositor
Electron dose ( $e^-/\text{\AA}^2$ )	66	Depositor
Minimum defocus (nm)	Not provided	
Maximum defocus (nm)	Not provided	
Magnification	Not provided	
Image detector	GATAN K3 (6k x 4k)	Depositor
Maximum map value	5.467	Depositor
Minimum map value	-3.474	Depositor
Average map value	0.003	Depositor
Map value standard deviation	0.093	Depositor
Recommended contour level	0.4	Depositor
Map size ( $\text{\AA}$ )	340.80002, 340.80002, 340.80002	wwPDB
Map dimensions	320, 320, 320	wwPDB
Map angles ( $^\circ$ )	90.0, 90.0, 90.0	wwPDB
Pixel spacing ( $\text{\AA}$ )	1.065, 1.065, 1.065	Depositor

## 5 Model quality [i](#)

### 5.1 Standard geometry [i](#)

Bond lengths and bond angles in the following residue types are not validated in this section: ADP, 1N7, ZN, MG

The Z score for a bond length (or angle) is the number of standard deviations the observed value is removed from the expected value. A bond length (or angle) with  $|Z| > 5$  is considered an outlier worth inspection. RMSZ is the root-mean-square of all Z scores of the bond lengths (or angles).

Mol	Chain	Bond lengths		Bond angles	
		RMSZ	# Z  >5	RMSZ	# Z  >5
1	A	0.30	0/7659	0.43	0/10394
2	B	0.25	0/1435	0.42	0/1946
2	D	0.25	0/1446	0.42	0/1958
3	C	0.25	0/579	0.39	0/779
4	P	0.22	0/864	0.81	0/1341
5	T	0.25	0/860	0.80	0/1338
All	All	0.28	0/12843	0.50	0/17756

Chiral center outliers are detected by calculating the chiral volume of a chiral center and verifying if the center is modelled as a planar moiety or with the opposite hand. A planarity outlier is detected by checking planarity of atoms in a peptide group, atoms in a mainchain group or atoms of a sidechain that are expected to be planar.

Mol	Chain	#Chirality outliers	#Planarity outliers
2	D	0	1

There are no bond length outliers.

There are no bond angle outliers.

There are no chirality outliers.

All (1) planarity outliers are listed below:

Mol	Chain	Res	Type	Group
2	D	31	SER	Peptide

### 5.2 Too-close contacts [i](#)

In the following table, the Non-H and H(model) columns list the number of non-hydrogen atoms and hydrogen atoms in the chain respectively. The H(added) column lists the number of hydrogen atoms added and optimized by MolProbity. The Clashes column lists the number of clashes within

the asymmetric unit, whereas Symm-Clashes lists symmetry-related clashes.

Mol	Chain	Non-H	H(model)	H(added)	Clashes	Symm-Clashes
1	A	7470	0	7206	90	0
2	B	1416	0	1422	7	0
2	D	1427	0	1445	12	0
3	C	576	0	608	5	0
4	P	776	0	399	14	0
5	T	769	0	387	25	0
6	A	2	0	0	0	0
7	A	1	0	0	0	0
8	A	27	0	12	1	0
9	A	61	0	86	3	0
9	D	36	0	52	3	0
All	All	12561	0	11617	146	0

The all-atom clashscore is defined as the number of clashes found per 1000 atoms (including hydrogen atoms). The all-atom clashscore for this structure is 6.

All (146) close contacts within the same asymmetric unit are listed below, sorted by their clash magnitude.

Atom-1	Atom-2	Interatomic distance (Å)	Clash overlap (Å)
1:A:83:GLU:HG3	1:A:219:PHE:HB2	1.71	0.72
1:A:607:SER:HG	1:A:754:SER:HG	1.40	0.70
1:A:553:ARG:HD2	4:P:38:C:H4'	1.79	0.65
1:A:569:ARG:O	1:A:573:GLN:HB2	1.96	0.65
1:A:105:ARG:NH1	1:A:110:MET:SD	2.71	0.64
1:A:116:ARG:NH2	8:A:1004:ADP:O3B	2.29	0.64
1:A:116:ARG:HG2	1:A:217:TYR:HB2	1.80	0.62
1:A:653:TYR:O	1:A:657:ASN:ND2	2.31	0.62
1:A:449:ALA:HB2	1:A:544:LEU:HD11	1.82	0.61
1:A:50:LYS:NZ	1:A:53:CYS:SG	2.71	0.61
2:B:130:VAL:HB	2:B:186:VAL:HG13	1.83	0.61
1:A:378:PRO:HD2	1:A:537:PRO:HB2	1.83	0.60
1:A:496:ASN:ND2	5:T:22:A:OP2	2.35	0.59
1:A:589:ILE:HG12	1:A:758:LEU:HD13	1.85	0.59
4:P:26:U:H2'	4:P:27:A:H8	1.69	0.57
5:T:40:C:H2'	5:T:41:G:H8	1.69	0.57
2:D:25:ALA:O	2:D:29:GLY:N	2.36	0.57
1:A:409:THR:OG1	3:C:23:GLU:OE1	2.23	0.57
1:A:615:MET:HB2	1:A:766:PHE:HE1	1.69	0.56
1:A:468:GLN:HA	1:A:731:LEU:HD22	1.88	0.56
1:A:568:ASN:OD1	1:A:654:ARG:NH2	2.39	0.56

*Continued on next page...*

*Continued from previous page...*

Atom-1	Atom-2	Interatomic distance (Å)	Clash overlap (Å)
5:T:47:U:H2'	5:T:48:G:H8	1.70	0.56
4:P:18:C:H2'	4:P:19:A:H8	1.72	0.55
1:A:691:ASN:HB3	1:A:759:SER:O	2.08	0.54
2:D:177:SER:HA	2:D:180:LEU:HD12	1.90	0.54
1:A:545:LYS:HB3	1:A:555:ARG:HG3	1.91	0.53
5:T:45:C:H2'	5:T:46:A:H8	1.74	0.53
1:A:59:LYS:HB3	1:A:65:LEU:HD23	1.90	0.53
1:A:851:ASP:OD1	2:D:75:ARG:NH2	2.37	0.53
5:T:34:G:H2'	5:T:35:A:H8	1.73	0.53
2:D:134:ASP:OD1	2:D:135:TYR:N	2.42	0.53
1:A:239:SER:OG	1:A:465:ASP:OD1	2.25	0.53
1:A:867:TYR:O	1:A:870:THR:OG1	2.27	0.52
3:C:58:VAL:HG22	2:D:119:ILE:HG12	1.90	0.52
1:A:502:ALA:HB1	1:A:562:ILE:HB	1.90	0.52
5:T:50:U:H2'	5:T:51:A:H8	1.75	0.51
1:A:53:CYS:HB3	1:A:71:VAL:HG13	1.93	0.51
1:A:790:ASN:HB3	1:A:792:VAL:HG22	1.91	0.50
4:P:26:U:H2'	4:P:27:A:C8	2.45	0.50
1:A:382:ALA:HB3	2:B:117:LEU:HD11	1.94	0.50
4:P:25:C:H2'	4:P:26:U:H6	1.77	0.50
1:A:698:GLN:OE1	1:A:789:GLN:NE2	2.45	0.50
1:A:462:THR:OG1	1:A:791:ASN:OD1	2.29	0.50
1:A:149:TYR:HE2	1:A:212:LEU:HD13	1.77	0.49
1:A:587:VAL:HG12	1:A:589:ILE:HG13	1.92	0.49
1:A:602:LEU:HD11	1:A:809:PRO:HD3	1.94	0.49
1:A:614:LEU:HA	1:A:764:VAL:O	2.13	0.49
1:A:647:SER:OG	1:A:648:LEU:N	2.46	0.49
1:A:80:TYR:HE1	1:A:101:PHE:HB3	1.76	0.49
1:A:249:ARG:HB3	1:A:252:THR:HG23	1.95	0.49
5:T:29:U:H2'	5:T:30:A:H8	1.76	0.49
1:A:335:VAL:HG12	1:A:363:SER:HB2	1.96	0.48
5:T:35:A:H2'	5:T:36:A:H8	1.79	0.48
1:A:303:ASP:OD1	1:A:303:ASP:N	2.47	0.48
2:D:22:TYR:HD1	2:D:38:LEU:HB3	1.78	0.48
1:A:72:VAL:HG13	1:A:115:SER:HB2	1.95	0.48
4:P:18:C:H2'	4:P:19:A:C8	2.49	0.48
1:A:211:ASP:N	1:A:211:ASP:OD1	2.44	0.48
4:P:25:C:H2'	4:P:26:U:C6	2.49	0.47
1:A:416:ASN:HA	1:A:850:THR:HG23	1.96	0.47
5:T:47:U:H2'	5:T:48:G:C8	2.49	0.47
1:A:86:ILE:HG23	1:A:201:ILE:HD13	1.97	0.47

*Continued on next page...*

*Continued from previous page...*

Atom-1	Atom-2	Interatomic distance (Å)	Clash overlap (Å)
1:A:840:ALA:O	1:A:858:ARG:NH2	2.47	0.47
9:A:1005:1N7:H14	9:A:1005:1N7:H29	1.64	0.47
5:T:38:G:H2'	5:T:39:A:C8	2.50	0.47
1:A:445:ASP:OD1	1:A:445:ASP:N	2.37	0.47
1:A:813:CYS:HG	4:P:35:A:HO2'	1.62	0.47
1:A:708:LEU:HD11	1:A:731:LEU:HD12	1.97	0.46
2:D:95:LEU:HD12	2:D:95:LEU:HA	1.81	0.46
1:A:636:LEU:HD21	1:A:655:LEU:HD22	1.97	0.46
1:A:720:VAL:HG11	1:A:775:LEU:HD13	1.97	0.46
1:A:80:TYR:CE1	1:A:101:PHE:HB3	2.50	0.46
5:T:34:G:H2'	5:T:35:A:C8	2.50	0.46
1:A:904:SER:HB3	9:D:201:1N7:H53	1.97	0.46
5:T:38:G:H2'	5:T:39:A:H8	1.81	0.46
1:A:202:VAL:HG13	1:A:231:VAL:HG13	1.99	0.45
1:A:684:ASP:OD1	1:A:684:ASP:N	2.49	0.45
1:A:694:PHE:HE1	1:A:698:GLN:HE21	1.62	0.45
5:T:52:C:H2'	5:T:53:G:C8	2.51	0.45
1:A:699:ALA:HA	1:A:782:PHE:CE1	2.52	0.45
2:B:160:VAL:HG12	2:B:166:ILE:HD13	1.97	0.45
1:A:837:ILE:O	1:A:884:TYR:OH	2.33	0.45
5:T:29:U:H2'	5:T:30:A:C8	2.51	0.45
5:T:31:G:H2'	5:T:32:G:H8	1.82	0.45
1:A:915:TYR:O	1:A:921:TYR:OH	2.23	0.45
5:T:50:U:H2'	5:T:51:A:C8	2.51	0.45
1:A:388:LEU:HD23	1:A:397:SER:HB2	1.98	0.45
1:A:699:ALA:HA	1:A:782:PHE:HE1	1.82	0.45
5:T:32:G:H2'	5:T:33:A:H8	1.82	0.44
1:A:480:PHE:HE1	1:A:696:ILE:HD12	1.83	0.44
2:B:6:PHE:HA	2:B:9:LEU:HD23	1.99	0.44
1:A:824:ASP:OD1	1:A:824:ASP:N	2.48	0.44
1:A:555:ARG:NE	4:P:37:C:O2	2.47	0.44
1:A:695:ASN:HD21	1:A:762:ALA:HB2	1.82	0.44
3:C:56:LEU:HD23	2:D:106:ILE:HD11	1.99	0.44
1:A:182:VAL:O	1:A:185:ALA:HB3	2.17	0.44
1:A:440:PHE:CZ	3:C:7:LYS:HD3	2.53	0.44
2:D:176:ASN:O	2:D:176:ASN:ND2	2.47	0.44
1:A:615:MET:HB2	1:A:766:PHE:CE1	2.52	0.43
4:P:5:U:H2'	4:P:6:A:H8	1.84	0.43
1:A:225:THR:OG1	1:A:226:THR:N	2.51	0.43
1:A:746:TYR:CZ	1:A:750:ARG:HD2	2.53	0.43
4:P:24:C:H2'	4:P:25:C:H6	1.84	0.43

*Continued on next page...*

*Continued from previous page...*

Atom-1	Atom-2	Interatomic distance (Å)	Clash overlap (Å)
1:A:390:ASP:OD2	1:A:674:TYR:OH	2.30	0.43
1:A:434:SER:OG	1:A:876:GLU:OE1	2.27	0.43
9:A:1005:1N7:H6	9:A:1005:1N7:H15	2.00	0.43
5:T:22:A:H2'	5:T:23:G:H8	1.83	0.43
1:A:698:GLN:NE2	1:A:790:ASN:OD1	2.52	0.43
5:T:33:A:H2'	5:T:34:G:H8	1.84	0.43
1:A:109:ASP:N	1:A:109:ASP:OD1	2.51	0.42
5:T:40:C:H2'	5:T:41:G:C8	2.50	0.42
1:A:173:ARG:O	1:A:177:ASN:ND2	2.50	0.42
2:D:160:VAL:HG23	2:D:185:ILE:HB	2.02	0.42
9:D:201:1N7:H10	9:D:201:1N7:H33	1.90	0.42
5:T:45:C:H2'	5:T:46:A:C8	2.55	0.42
4:P:10:U:H2'	4:P:11:G:H8	1.85	0.42
2:D:167:VAL:HG21	2:D:180:LEU:HD21	2.02	0.42
1:A:210:GLN:HE21	1:A:214:GLY:HA2	1.83	0.41
1:A:715:ILE:O	1:A:721:ARG:NH2	2.42	0.41
1:A:42:VAL:HG23	1:A:712:GLY:HA3	2.02	0.41
5:T:24:C:H2'	5:T:25:U:H6	1.84	0.41
1:A:598:TRP:HE1	1:A:817:THR:HG1	1.67	0.41
4:P:24:C:H2'	4:P:25:C:C6	2.55	0.41
5:T:35:A:H2'	5:T:36:A:C8	2.56	0.41
5:T:22:A:H2'	5:T:23:G:C8	2.55	0.41
2:B:162:ALA:HB2	2:B:183:PRO:HD2	2.02	0.41
1:A:75:HIS:CG	1:A:76:THR:H	2.38	0.41
1:A:128:VAL:HG22	1:A:244:ILE:HG13	2.03	0.41
1:A:864:ILE:HG23	1:A:924:MET:HG2	2.03	0.41
2:B:137:THR:O	2:B:141:THR:HG22	2.20	0.41
3:C:20:LEU:HD11	3:C:66:VAL:HG13	2.03	0.41
9:D:201:1N7:H14	9:D:201:1N7:H29	1.78	0.41
1:A:123:THR:HA	1:A:211:ASP:HA	2.03	0.41
1:A:295:HIS:HE1	1:A:306:CYS:SG	2.44	0.41
1:A:723:LEU:HD21	1:A:745:PHE:HD1	1.86	0.41
1:A:816:HIS:O	1:A:830:PRO:HA	2.21	0.41
2:D:155:GLU:HG2	2:D:191:ALA:HB2	2.03	0.40
4:P:23:U:H2'	4:P:24:C:C6	2.57	0.40
1:A:450:ILE:HD12	1:A:450:ILE:HA	1.88	0.40
1:A:603:LYS:HD3	1:A:603:LYS:HA	1.90	0.40
1:A:855:MET:HB3	1:A:858:ARG:HB3	2.02	0.40
1:A:223:ILE:HD11	9:A:1005:1N7:H8	2.04	0.40
1:A:494:ILE:O	1:A:573:GLN:NE2	2.39	0.40
1:A:715:ILE:HG12	1:A:775:LEU:HD21	2.04	0.40

*Continued on next page...*

Continued from previous page...

Atom-1	Atom-2	Interatomic distance (Å)	Clash overlap (Å)
1:A:371:LEU:HD21	2:B:88:GLN:HG3	2.03	0.40
5:T:31:G:H2'	5:T:32:G:C8	2.57	0.40

There are no symmetry-related clashes.

## 5.3 Torsion angles [\(i\)](#)

### 5.3.1 Protein backbone [\(i\)](#)

In the following table, the Percentiles column shows the percent Ramachandran outliers of the chain as a percentile score with respect to all PDB entries followed by that with respect to all EM entries.

The Analysed column shows the number of residues for which the backbone conformation was analysed, and the total number of residues.

Mol	Chain	Analysed	Favoured	Allowed	Outliers	Percentiles	
1	A	925/932 (99%)	894 (97%)	31 (3%)	0	100	100
2	B	184/199 (92%)	181 (98%)	3 (2%)	0	100	100
2	D	183/199 (92%)	178 (97%)	5 (3%)	0	100	100
3	C	73/88 (83%)	72 (99%)	1 (1%)	0	100	100
All	All	1365/1418 (96%)	1325 (97%)	40 (3%)	0	100	100

There are no Ramachandran outliers to report.

### 5.3.2 Protein sidechains [\(i\)](#)

In the following table, the Percentiles column shows the percent sidechain outliers of the chain as a percentile score with respect to all PDB entries followed by that with respect to all EM entries.

The Analysed column shows the number of residues for which the sidechain conformation was analysed, and the total number of residues.

Mol	Chain	Analysed	Rotameric	Outliers	Percentiles	
1	A	819/823 (100%)	787 (96%)	32 (4%)	32	67
2	B	151/168 (90%)	147 (97%)	4 (3%)	46	76
2	D	155/168 (92%)	146 (94%)	9 (6%)	20	55

Continued on next page...

*Continued from previous page...*

Mol	Chain	Analysed	Rotameric	Outliers	Percentiles	
3	C	70/81 (86%)	70 (100%)	0	100	100
All	All	1195/1240 (96%)	1150 (96%)	45 (4%)	36	67

All (45) residues with a non-rotameric sidechain are listed below:

Mol	Chain	Res	Type
1	A	10	ARG
1	A	24	THR
1	A	31	VAL
1	A	49	LEU
1	A	105	ARG
1	A	114	ILE
1	A	116	ARG
1	A	231	VAL
1	A	268	TRP
1	A	293	THR
1	A	315	VAL
1	A	335	VAL
1	A	341	VAL
1	A	359	VAL
1	A	386	ASN
1	A	481	ASP
1	A	555	ARG
1	A	613	HIS
1	A	666	MET
1	A	686	THR
1	A	687	THR
1	A	694	PHE
1	A	711	ASP
1	A	737	VAL
1	A	754	SER
1	A	758	LEU
1	A	776	VAL
1	A	813	CYS
1	A	870	THR
1	A	871	LYS
1	A	891	LEU
1	A	912	THR
2	B	51	ARG
2	B	79	LYS
2	B	157	GLN
2	B	186	VAL

*Continued on next page...*



*Continued from previous page...*

Mol	Chain	Res	Type
2	D	32	GLU
2	D	42	LEU
2	D	43	ASN
2	D	50	ASP
2	D	72	LYS
2	D	95	LEU
2	D	99	ASP
2	D	131	VAL
2	D	176	ASN

Sometimes sidechains can be flipped to improve hydrogen bonding and reduce clashes. All (2) such sidechains are listed below:

Mol	Chain	Res	Type
1	A	698	GLN
1	A	789	GLN

### 5.3.3 RNA [i](#)

Mol	Chain	Analysed	Backbone Outliers	Pucker Outliers
4	P	36/40 (90%)	2 (5%)	1 (2%)
5	T	35/55 (63%)	2 (5%)	0
All	All	71/95 (74%)	4 (5%)	1 (1%)

All (4) RNA backbone outliers are listed below:

Mol	Chain	Res	Type
4	P	26	U
4	P	38	C
5	T	42	U
5	T	43	A

All (1) RNA pucker outliers are listed below:

Mol	Chain	Res	Type
4	P	25	C

## 5.4 Non-standard residues in protein, DNA, RNA chains [i](#)

There are no non-standard protein/DNA/RNA residues in this entry.

## 5.5 Carbohydrates [i](#)

There are no monosaccharides in this entry.

## 5.6 Ligand geometry [i](#)

Of 7 ligands modelled in this entry, 3 are monoatomic - leaving 4 for Mogul analysis.

In the following table, the Counts columns list the number of bonds (or angles) for which Mogul statistics could be retrieved, the number of bonds (or angles) that are observed in the model and the number of bonds (or angles) that are defined in the Chemical Component Dictionary. The Link column lists molecule types, if any, to which the group is linked. The Z score for a bond length (or angle) is the number of standard deviations the observed value is removed from the expected value. A bond length (or angle) with  $|Z| > 2$  is considered an outlier worth inspection. RMSZ is the root-mean-square of all Z scores of the bond lengths (or angles).

Mol	Type	Chain	Res	Link	Bond lengths			Bond angles		
					Counts	RMSZ	# $ Z  > 2$	Counts	RMSZ	# $ Z  > 2$
9	1N7	D	201	-	39,39,46	2.77	21 (53%)	61,61,72	2.45	26 (42%)
9	1N7	A	1005	-	38,38,46	2.87	21 (55%)	58,58,72	3.07	24 (41%)
9	1N7	A	1006	-	29,29,46	2.76	16 (55%)	47,47,72	2.31	20 (42%)
8	ADP	A	1004	7	24,29,29	0.94	1 (4%)	29,45,45	1.51	4 (13%)

In the following table, the Chirals column lists the number of chiral outliers, the number of chiral centers analysed, the number of these observed in the model and the number defined in the Chemical Component Dictionary. Similar counts are reported in the Torsion and Rings columns. '-' means no outliers of that kind were identified.

Mol	Type	Chain	Res	Link	Chirals	Torsions	Rings
9	1N7	D	201	-	-	8/17/82/92	0/4/4/4
9	1N7	A	1005	-	2/2/13/16	9/16/81/92	0/4/4/4
9	1N7	A	1006	-	-	5/6/71/92	0/4/4/4
8	ADP	A	1004	7	-	3/12/32/32	0/3/3/3

All (59) bond length outliers are listed below:

Mol	Chain	Res	Type	Atoms	Z	Observed(Å)	Ideal(Å)
9	A	1005	1N7	C18-C17	6.29	1.64	1.53
9	D	201	1N7	C18-C17	6.01	1.63	1.53
9	A	1006	1N7	C18-C17	5.82	1.63	1.53
9	A	1005	1N7	C23-C24	5.08	1.61	1.51
9	D	201	1N7	C23-C24	5.00	1.60	1.51
9	A	1005	1N7	C24-N1	4.89	1.44	1.33

*Continued on next page...*

*Continued from previous page...*

Mol	Chain	Res	Type	Atoms	Z	Observed(Å)	Ideal(Å)
9	D	201	1N7	C24-N1	4.87	1.44	1.33
9	A	1005	1N7	C2-C19	4.71	1.64	1.56
9	A	1006	1N7	C2-C19	4.67	1.64	1.56
9	A	1005	1N7	C16-C17	4.45	1.60	1.52
9	D	201	1N7	C2-C19	4.44	1.64	1.56
9	D	201	1N7	C16-C17	4.36	1.60	1.52
9	A	1006	1N7	C3-C19	4.29	1.60	1.53
9	A	1006	1N7	C16-C17	4.25	1.60	1.52
9	D	201	1N7	C3-C19	4.13	1.60	1.53
9	A	1006	1N7	C14-C13	4.11	1.59	1.51
9	A	1005	1N7	C3-C19	4.08	1.60	1.53
9	D	201	1N7	C14-C13	4.04	1.59	1.51
9	A	1005	1N7	C14-C13	3.99	1.59	1.51
9	A	1005	1N7	C28-N2	3.99	1.58	1.46
9	A	1005	1N7	C20-C9	3.95	1.61	1.54
9	A	1006	1N7	C20-C9	3.75	1.61	1.54
9	D	201	1N7	C20-C9	3.68	1.60	1.54
9	A	1005	1N7	C5-C4	3.64	1.60	1.54
9	A	1006	1N7	C5-C4	3.54	1.60	1.54
9	D	201	1N7	C28-N2	3.50	1.60	1.50
9	D	201	1N7	C5-C4	3.34	1.59	1.54
9	D	201	1N7	C14-C15	3.31	1.59	1.53
9	A	1006	1N7	C14-C15	3.30	1.59	1.53
9	A	1005	1N7	C14-C15	3.28	1.59	1.53
9	A	1005	1N7	C18-C6	3.07	1.59	1.53
9	A	1005	1N7	C5-C6	3.01	1.60	1.55
9	D	201	1N7	C16-C15	2.99	1.58	1.53
9	A	1005	1N7	C16-C15	2.97	1.58	1.53
9	A	1005	1N7	C25-N1	2.97	1.52	1.46
9	D	201	1N7	C25-N1	2.97	1.52	1.46
9	A	1006	1N7	C16-C15	2.93	1.58	1.53
9	D	201	1N7	C29-N2	2.91	1.58	1.50
9	A	1005	1N7	C1-C2	2.86	1.59	1.54
9	A	1006	1N7	C1-C2	2.85	1.59	1.54
9	D	201	1N7	C1-C2	2.81	1.59	1.54
9	A	1006	1N7	C2-C15	2.80	1.59	1.55
9	D	201	1N7	C2-C15	2.77	1.59	1.55
9	A	1006	1N7	C18-C6	2.76	1.59	1.53
9	D	201	1N7	C18-C6	2.73	1.59	1.53
9	A	1005	1N7	C18-C19	2.72	1.59	1.53
9	A	1006	1N7	C3-C4	2.70	1.57	1.53
9	A	1006	1N7	C18-C19	2.66	1.59	1.53

*Continued on next page...*

Continued from previous page...

Mol	Chain	Res	Type	Atoms	Z	Observed(Å)	Ideal(Å)
9	D	201	1N7	C18-C19	2.60	1.58	1.53
9	A	1005	1N7	C2-C15	2.59	1.59	1.55
9	D	201	1N7	C3-C4	2.55	1.57	1.53
9	A	1006	1N7	C12-C13	2.52	1.57	1.51
9	A	1005	1N7	C3-C4	2.49	1.57	1.53
9	D	201	1N7	C12-C13	2.48	1.57	1.51
9	A	1005	1N7	C12-C13	2.47	1.57	1.51
8	A	1004	ADP	C5-C4	2.40	1.47	1.40
9	A	1006	1N7	C5-C6	2.39	1.59	1.55
9	D	201	1N7	C5-C6	2.27	1.59	1.55
9	A	1005	1N7	C22-C23	2.01	1.59	1.52

All (74) bond angle outliers are listed below:

Mol	Chain	Res	Type	Atoms	Z	Observed(°)	Ideal(°)
9	A	1005	1N7	C9-C5-C4	-13.33	105.50	117.67
9	D	201	1N7	C9-C5-C4	-6.56	111.67	117.67
9	A	1005	1N7	C6-C5-C4	6.47	113.43	107.40
9	A	1005	1N7	C9-C5-C6	6.37	106.51	100.09
9	A	1006	1N7	C9-C5-C4	-5.90	112.28	117.67
9	D	201	1N7	C6-C18-C17	5.45	119.04	111.81
9	A	1006	1N7	C8-C9-C5	-5.32	98.33	103.55
9	D	201	1N7	C8-C9-C5	-5.15	98.50	103.55
9	A	1005	1N7	C23-C24-N1	5.13	125.06	116.42
9	D	201	1N7	C23-C24-N1	5.11	125.03	116.42
9	A	1005	1N7	C5-C9-C20	-5.07	113.45	119.50
9	A	1005	1N7	C6-C18-C17	4.54	117.83	111.81
9	A	1005	1N7	C11-C2-C1	-4.52	100.98	108.26
9	D	201	1N7	C3-C4-C5	-4.42	106.70	111.24
9	A	1006	1N7	C11-C2-C1	-4.33	101.28	108.26
9	A	1006	1N7	C6-C18-C17	4.28	117.49	111.81
9	D	201	1N7	C5-C9-C20	-4.27	114.40	119.50
9	D	201	1N7	C11-C2-C1	-4.26	101.40	108.26
9	A	1005	1N7	C8-C9-C5	-4.12	99.52	103.55
9	A	1005	1N7	C8-C9-C20	4.08	118.46	112.15
9	A	1005	1N7	C7-C6-C18	-3.87	112.93	118.33
8	A	1004	ADP	PA-O3A-PB	-3.86	119.57	132.83
9	A	1005	1N7	C2-C19-C18	3.82	115.92	111.82
9	A	1006	1N7	C6-C5-C4	3.66	110.81	107.40
9	A	1006	1N7	C5-C9-C20	-3.52	115.30	119.50
9	A	1006	1N7	C3-C4-C5	-3.47	107.69	111.24
9	A	1005	1N7	C19-C2-C15	3.31	113.23	108.58

Continued on next page...

*Continued from previous page...*

Mol	Chain	Res	Type	Atoms	Z	Observed(°)	Ideal(°)
9	D	201	1N7	C27-C26-C25	3.30	117.41	111.04
9	D	201	1N7	C29-N2-C28	-3.29	100.53	108.97
9	D	201	1N7	C1-C12-C13	3.27	114.67	110.47
8	A	1004	ADP	C3'-C2'-C1'	3.25	105.88	100.98
9	A	1006	1N7	C19-C2-C15	3.25	113.14	108.58
8	A	1004	ADP	N3-C2-N1	-3.18	123.71	128.68
9	D	201	1N7	O1-C24-C23	-3.03	116.48	122.02
9	A	1006	1N7	C7-C6-C5	-3.03	100.58	103.55
9	D	201	1N7	C6-C5-C4	3.02	110.21	107.40
9	A	1006	1N7	C1-C12-C13	3.01	114.33	110.47
9	A	1005	1N7	O1-C24-C23	-3.01	116.51	122.02
9	D	201	1N7	C7-C6-C5	-3.01	100.60	103.55
9	A	1005	1N7	C16-C17-C18	2.97	114.66	111.48
9	A	1005	1N7	C1-C12-C13	2.88	114.16	110.47
9	A	1005	1N7	C3-C19-C2	-2.80	110.84	113.73
9	A	1006	1N7	C8-C9-C20	2.78	116.44	112.15
9	D	201	1N7	C10-C5-C4	2.76	111.87	109.07
9	A	1005	1N7	C15-C16-C17	2.75	117.49	114.46
9	A	1005	1N7	C19-C3-C4	2.69	117.86	114.30
9	D	201	1N7	C19-C2-C15	2.69	112.35	108.58
9	D	201	1N7	C30-N2-C28	-2.67	102.10	108.97
9	A	1006	1N7	C10-C5-C4	2.66	111.78	109.07
9	D	201	1N7	C8-C9-C20	2.66	116.27	112.15
8	A	1004	ADP	C4-C5-N7	-2.60	106.69	109.40
9	D	201	1N7	C7-C8-C9	2.56	110.21	105.13
9	A	1005	1N7	C7-C6-C5	2.55	106.05	103.55
9	A	1006	1N7	C2-C19-C18	2.54	114.55	111.82
9	D	201	1N7	C11-C2-C19	-2.54	107.68	111.18
9	A	1005	1N7	C23-C22-C20	2.47	119.03	114.52
9	A	1006	1N7	C10-C5-C9	-2.45	107.38	111.21
9	A	1005	1N7	O1-C24-N1	-2.43	118.43	123.01
9	A	1005	1N7	C10-C5-C4	2.43	111.54	109.07
9	D	201	1N7	C1-C2-C15	2.40	111.32	107.77
9	D	201	1N7	O1-C24-N1	-2.39	118.50	123.01
9	A	1006	1N7	C19-C3-C4	2.36	117.42	114.30
9	A	1006	1N7	C7-C8-C9	2.35	109.79	105.13
9	A	1006	1N7	C1-C2-C15	2.33	111.22	107.77
9	D	201	1N7	C15-C14-C13	2.31	116.15	112.76
9	A	1006	1N7	C15-C14-C13	2.27	116.09	112.76
9	A	1005	1N7	C10-C5-C9	-2.27	107.66	111.21
9	D	201	1N7	C10-C5-C9	-2.26	107.68	111.21
9	A	1005	1N7	C25-N1-C24	2.21	126.94	122.84

*Continued on next page...*

Continued from previous page...

Mol	Chain	Res	Type	Atoms	Z	Observed(°)	Ideal(°)
9	D	201	1N7	C25-N1-C24	2.20	126.91	122.84
9	D	201	1N7	C3-C19-C2	-2.19	111.47	113.73
9	A	1006	1N7	C11-C2-C19	-2.17	108.20	111.18
9	D	201	1N7	C9-C5-C6	2.12	102.23	100.09
9	A	1006	1N7	O3-C17-C16	-2.11	104.70	109.94

All (2) chirality outliers are listed below:

Mol	Chain	Res	Type	Atom
9	A	1005	1N7	C6
9	A	1005	1N7	C18

All (25) torsion outliers are listed below:

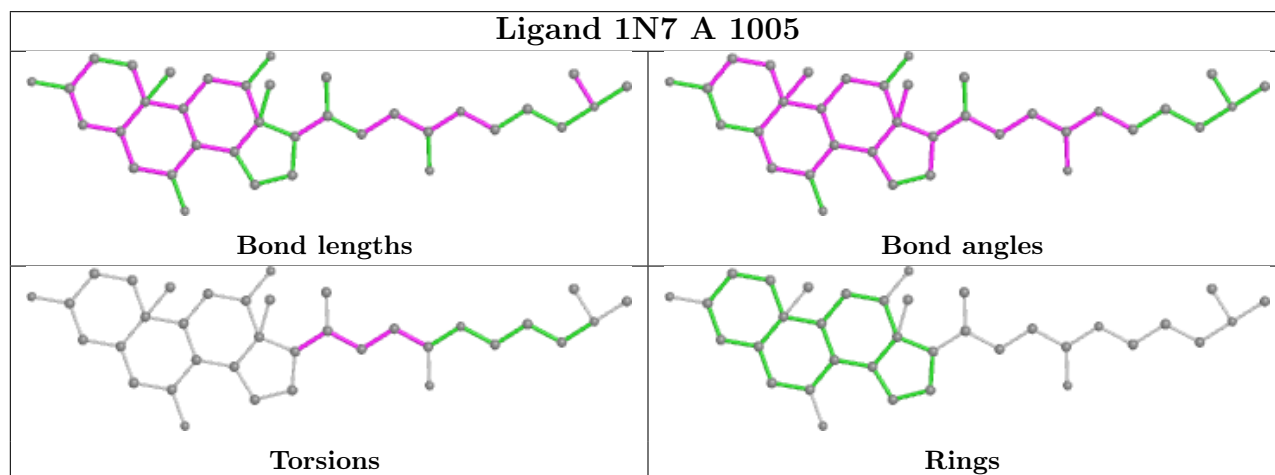
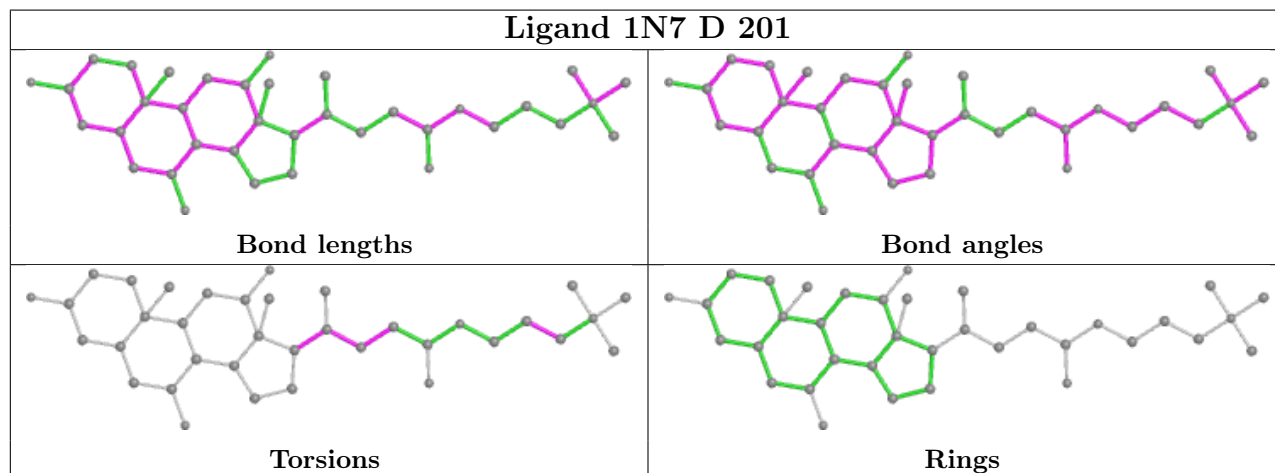
Mol	Chain	Res	Type	Atoms
8	A	1004	ADP	C5'-O5'-PA-O3A
9	A	1005	1N7	C21-C20-C9-C5
9	A	1005	1N7	C22-C20-C9-C8
9	A	1005	1N7	C21-C20-C9-C8
9	A	1005	1N7	C22-C20-C9-C5
9	A	1006	1N7	C22-C20-C9-C5
9	A	1006	1N7	C21-C20-C9-C5
9	D	201	1N7	C22-C20-C9-C5
9	D	201	1N7	C9-C20-C22-C23
9	D	201	1N7	C21-C20-C9-C5
9	D	201	1N7	C21-C20-C22-C23
9	A	1005	1N7	C9-C20-C22-C23
9	D	201	1N7	C25-C26-C27-N2
9	A	1006	1N7	C21-C20-C9-C8
9	A	1005	1N7	C20-C22-C23-C24
9	D	201	1N7	C21-C20-C9-C8
9	A	1006	1N7	C22-C20-C9-C8
9	D	201	1N7	C22-C20-C9-C8
8	A	1004	ADP	C5'-O5'-PA-O1A
9	A	1005	1N7	C21-C20-C22-C23
9	A	1005	1N7	C22-C23-C24-O1
9	A	1006	1N7	C9-C20-C22-C23
9	D	201	1N7	C20-C22-C23-C24
8	A	1004	ADP	PB-O3A-PA-O1A
9	A	1005	1N7	C22-C23-C24-N1

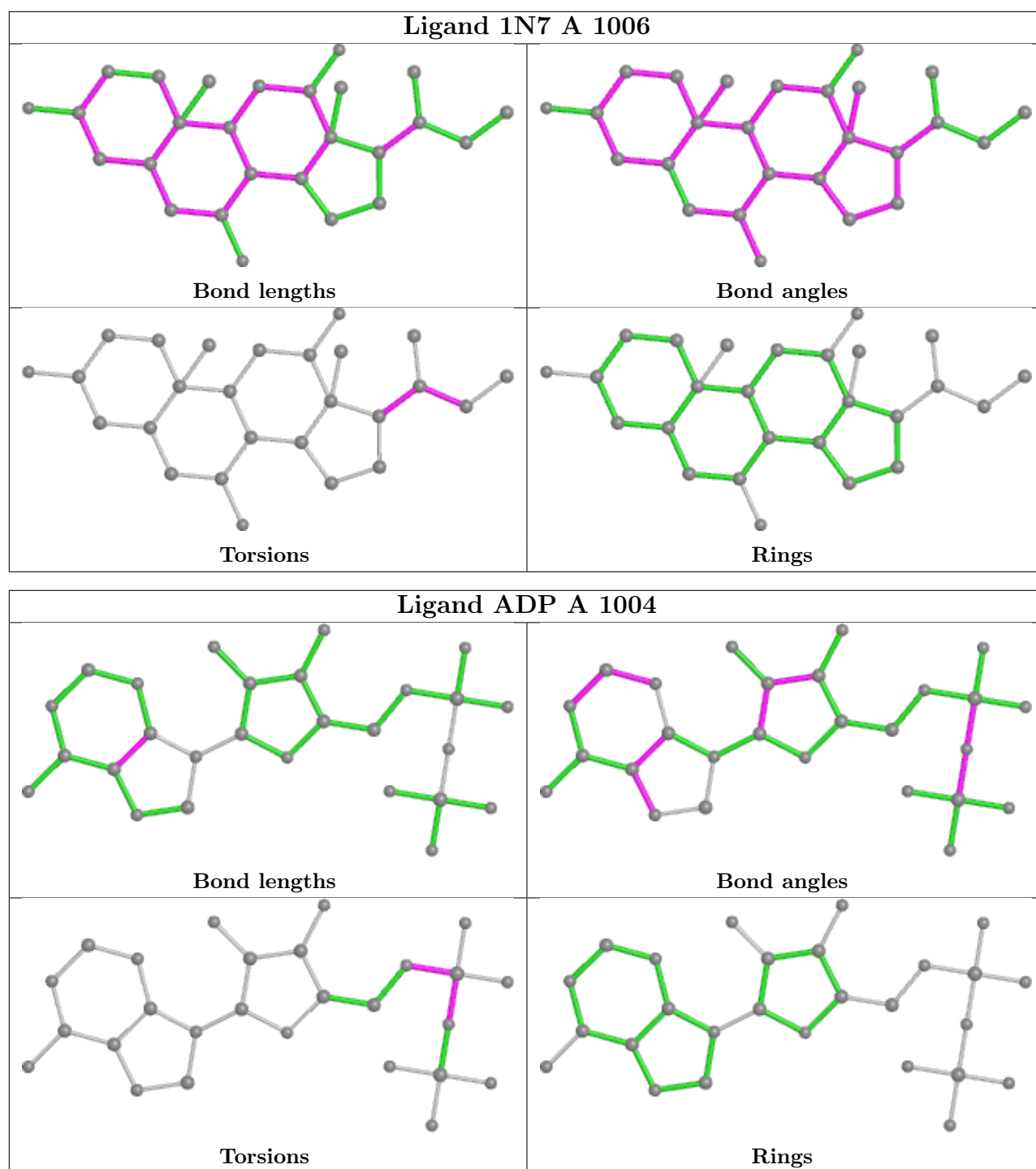
There are no ring outliers.

3 monomers are involved in 7 short contacts:

Mol	Chain	Res	Type	Clashes	Symm-Clashes
9	D	201	1N7	3	0
9	A	1005	1N7	3	0
8	A	1004	ADP	1	0

The following is a two-dimensional graphical depiction of Mogul quality analysis of bond lengths, bond angles, torsion angles, and ring geometry for all instances of the Ligand of Interest. In addition, ligands with molecular weight > 250 and outliers as shown on the validation Tables will also be included. For torsion angles, if less than 5% of the Mogul distribution of torsion angles is within 10 degrees of the torsion angle in question, then that torsion angle is considered an outlier. Any bond that is central to one or more torsion angles identified as an outlier by Mogul will be highlighted in the graph. For rings, the root-mean-square deviation (RMSD) between the ring in question and similar rings identified by Mogul is calculated over all ring torsion angles. If the average RMSD is greater than 60 degrees and the minimal RMSD between the ring in question and any Mogul-identified rings is also greater than 60 degrees, then that ring is considered an outlier. The outliers are highlighted in purple. The color gray indicates Mogul did not find sufficient equivalents in the CSD to analyse the geometry.





## 5.7 Other polymers [i](#)

There are no such residues in this entry.

## 5.8 Polymer linkage issues [i](#)

There are no chain breaks in this entry.



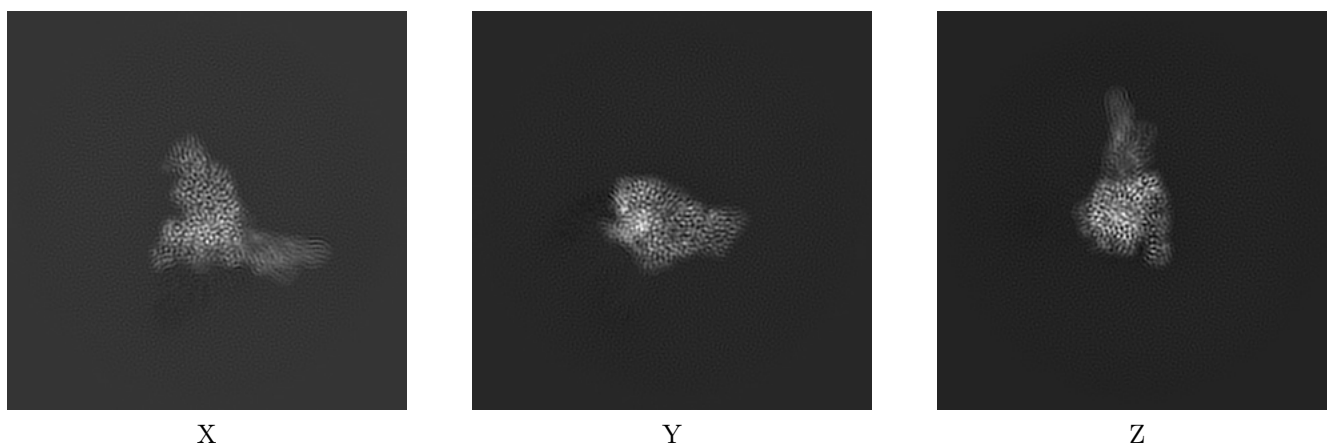
## 6 Map visualisation [i](#)

This section contains visualisations of the EMDB entry EMD-23009. These allow visual inspection of the internal detail of the map and identification of artifacts.

No raw map or half-maps were deposited for this entry and therefore no images, graphs, etc. pertaining to the raw map can be shown.

### 6.1 Orthogonal projections [i](#)

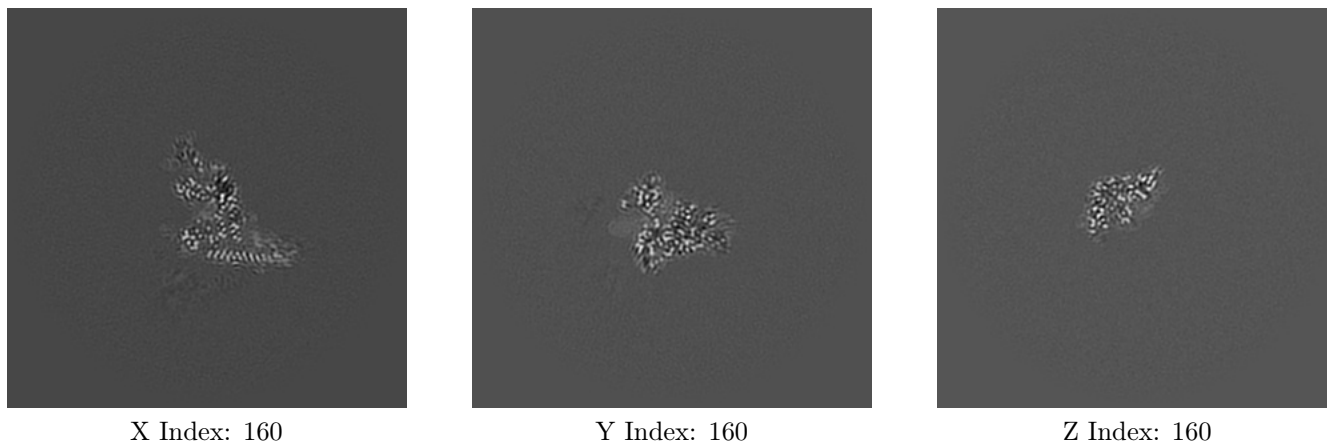
#### 6.1.1 Primary map



The images above show the map projected in three orthogonal directions.

### 6.2 Central slices [i](#)

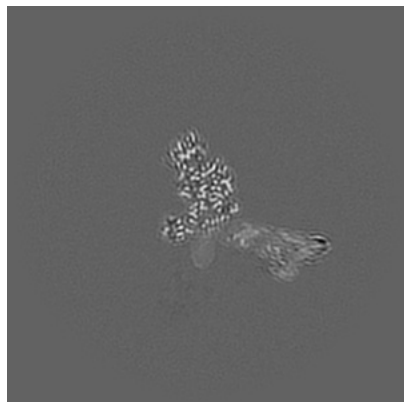
#### 6.2.1 Primary map



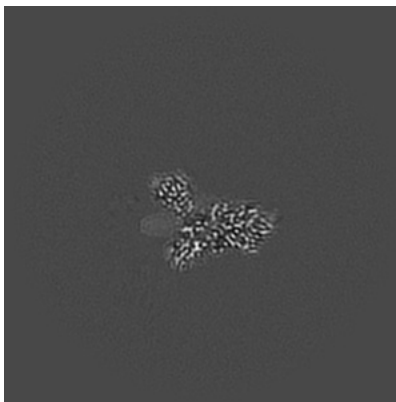
The images above show central slices of the map in three orthogonal directions.

## 6.3 Largest variance slices [\(i\)](#)

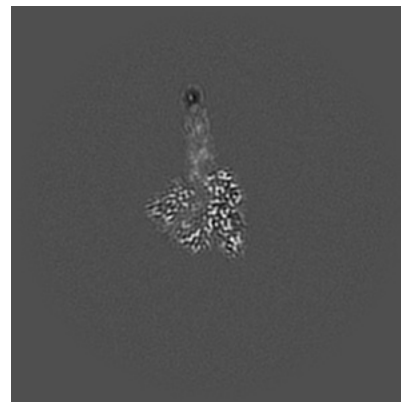
### 6.3.1 Primary map



X Index: 149



Y Index: 153

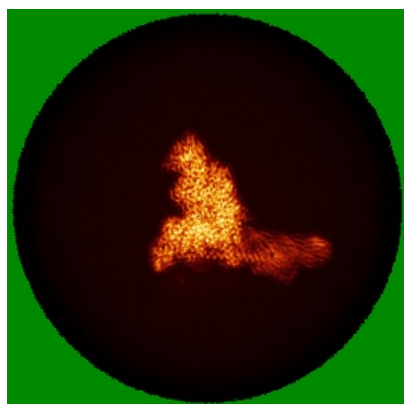


Z Index: 137

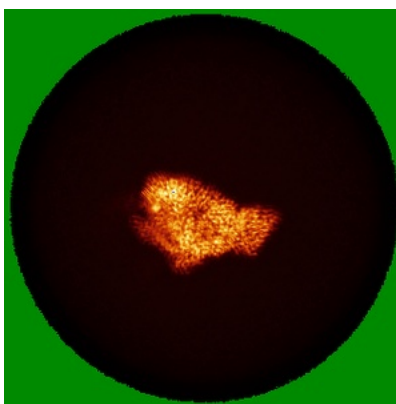
The images above show the largest variance slices of the map in three orthogonal directions.

## 6.4 Orthogonal standard-deviation projections (False-color) [\(i\)](#)

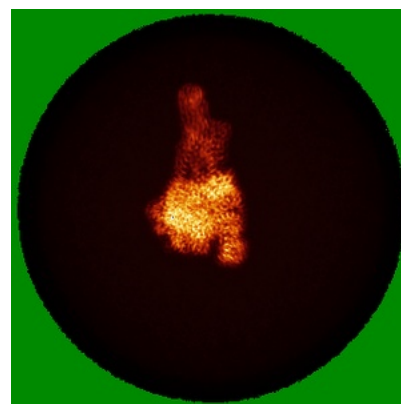
### 6.4.1 Primary map



X



Y



Z

The images above show the map standard deviation projections with false color in three orthogonal directions. Minimum values are shown in green, max in blue, and dark to light orange shades represent small to large values respectively.

## 6.5 Orthogonal surface views [i](#)

### 6.5.1 Primary map



The images above show the 3D surface view of the map at the recommended contour level 0.4. These images, in conjunction with the slice images, may facilitate assessment of whether an appropriate contour level has been provided.

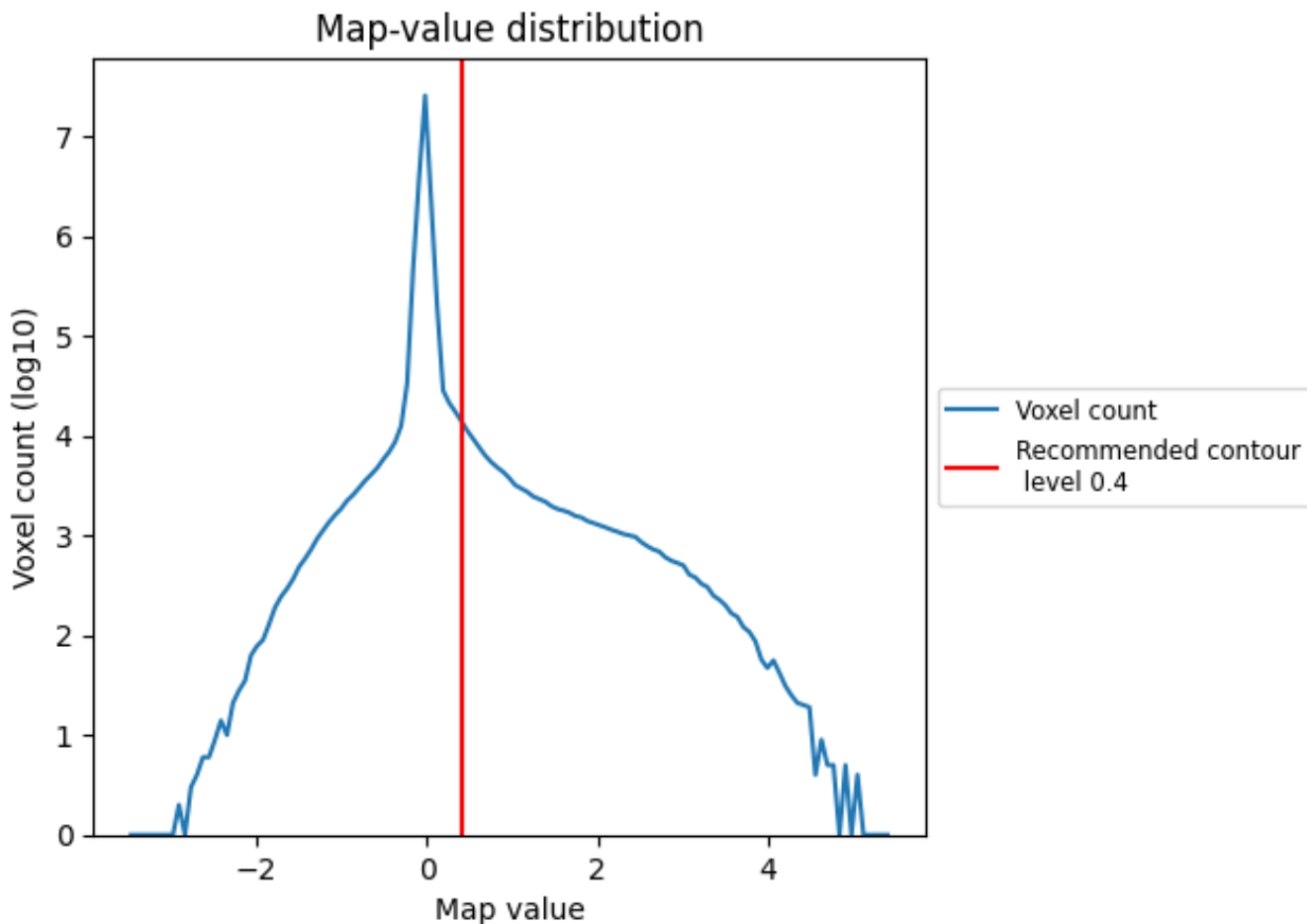
## 6.6 Mask visualisation [i](#)

This section was not generated. No masks/segmentation were deposited.

## 7 Map analysis [i](#)

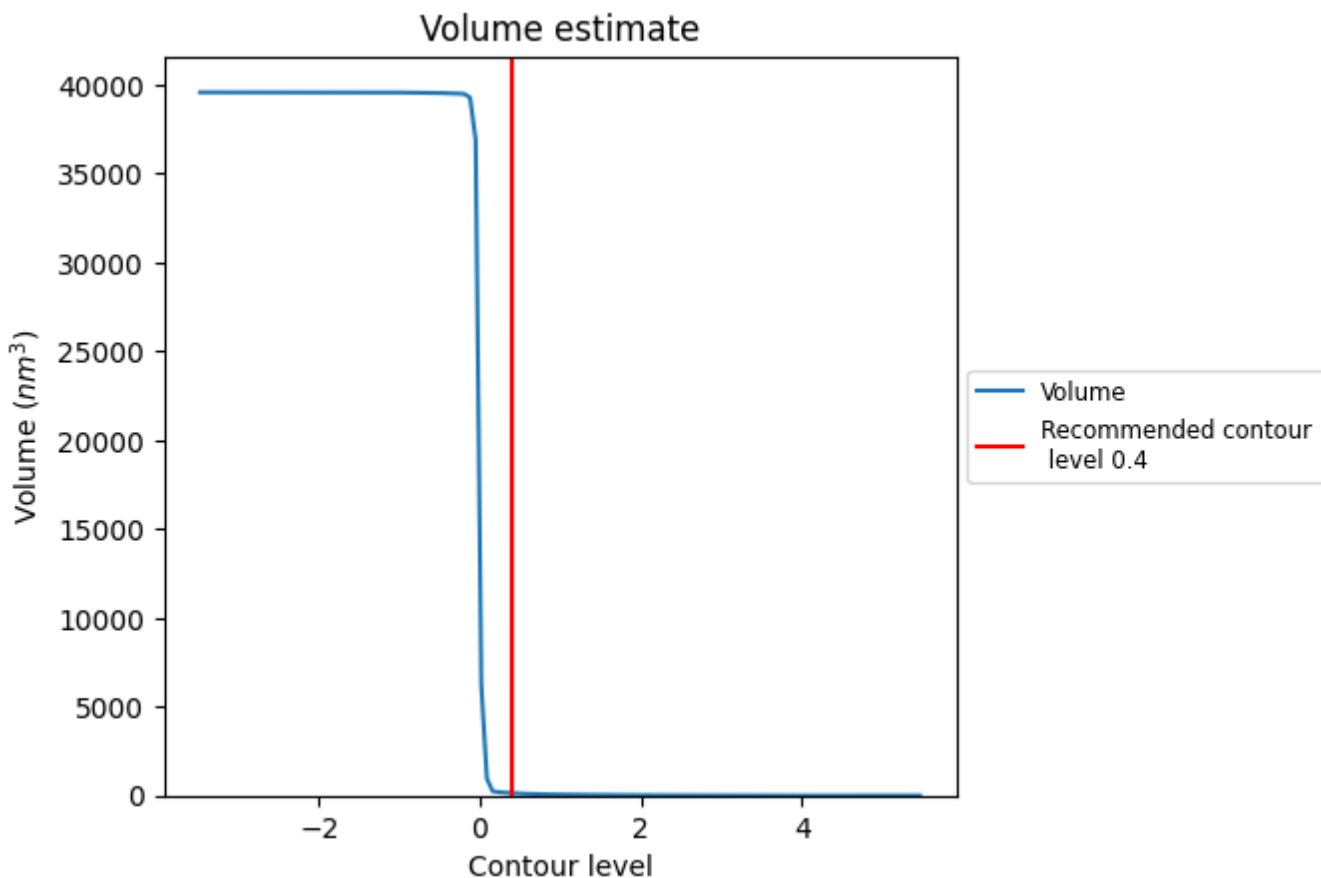
This section contains the results of statistical analysis of the map.

### 7.1 Map-value distribution [i](#)



The map-value distribution is plotted in 128 intervals along the x-axis. The y-axis is logarithmic. A spike in this graph at zero usually indicates that the volume has been masked.

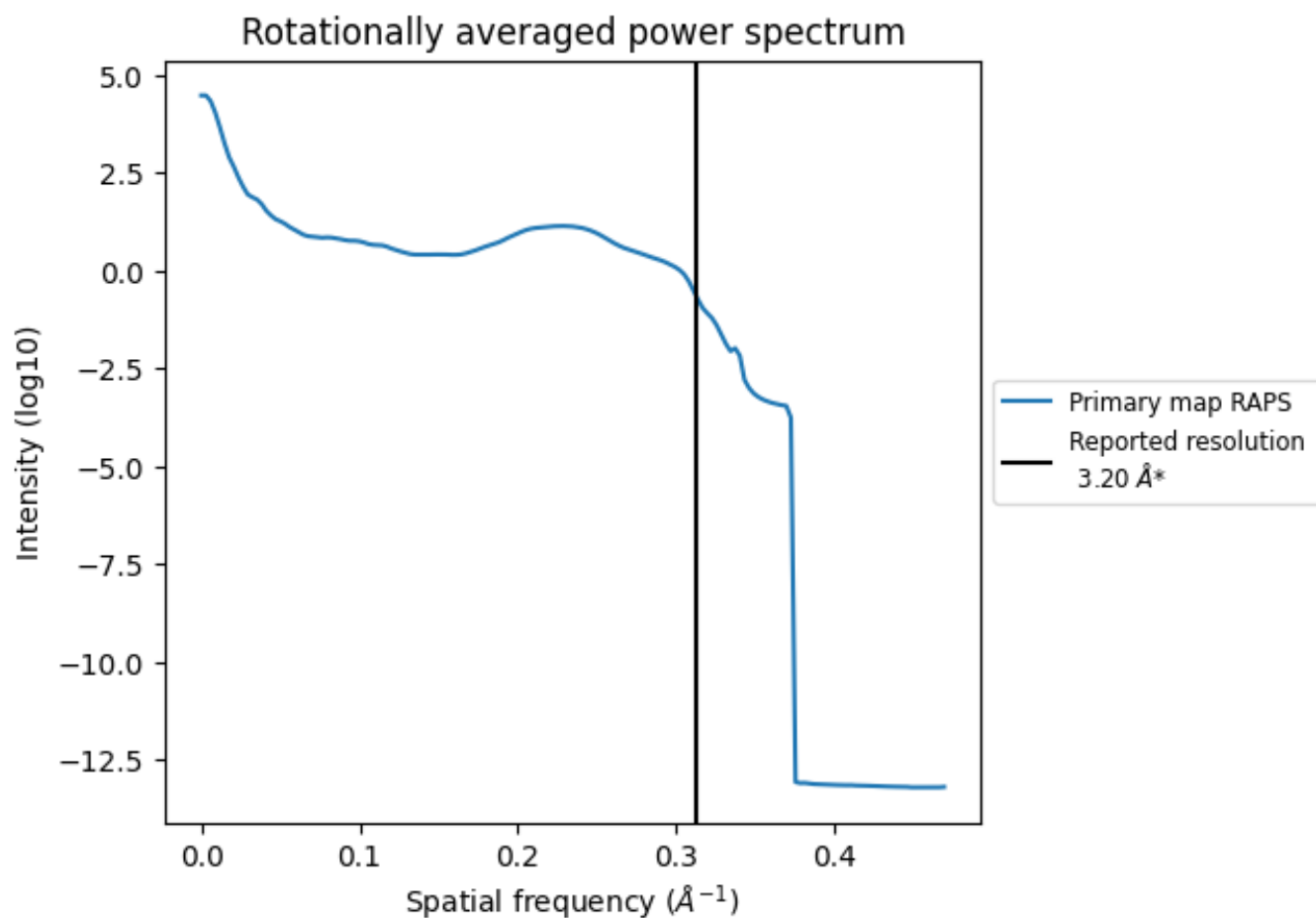
## 7.2 Volume estimate [i](#)



The volume at the recommended contour level is 136 nm<sup>3</sup>; this corresponds to an approximate mass of 122 kDa.

The volume estimate graph shows how the enclosed volume varies with the contour level. The recommended contour level is shown as a vertical line and the intersection between the line and the curve gives the volume of the enclosed surface at the given level.

### 7.3 Rotationally averaged power spectrum [i](#)

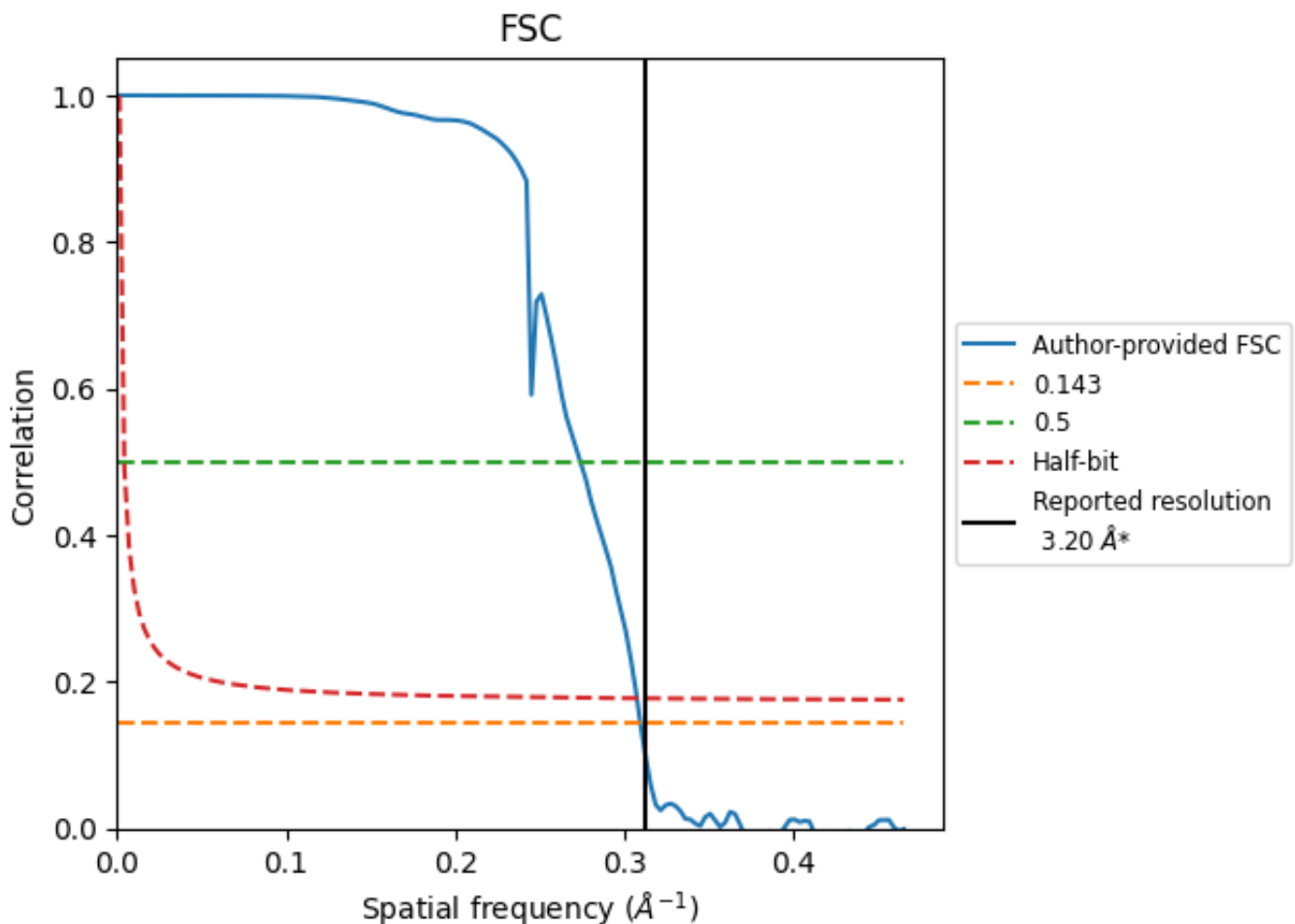


\*Reported resolution corresponds to spatial frequency of 0.312 Å<sup>-1</sup>

## 8 Fourier-Shell correlation [\(i\)](#)

Fourier-Shell Correlation (FSC) is the most commonly used method to estimate the resolution of single-particle and subtomogram-averaged maps. The shape of the curve depends on the imposed symmetry, mask and whether or not the two 3D reconstructions used were processed from a common reference. The reported resolution is shown as a black line. A curve is displayed for the half-bit criterion in addition to lines showing the 0.143 gold standard cut-off and 0.5 cut-off.

### 8.1 FSC [\(i\)](#)



\*Reported resolution corresponds to spatial frequency of 0.312 Å<sup>-1</sup>

## 8.2 Resolution estimates [i](#)

Resolution estimate (Å)	Estimation criterion (FSC cut-off)		
	0.143	0.5	Half-bit
Reported by author	3.20	-	-
Author-provided FSC curve	3.23	3.65	3.25
Unmasked-calculated*	-	-	-

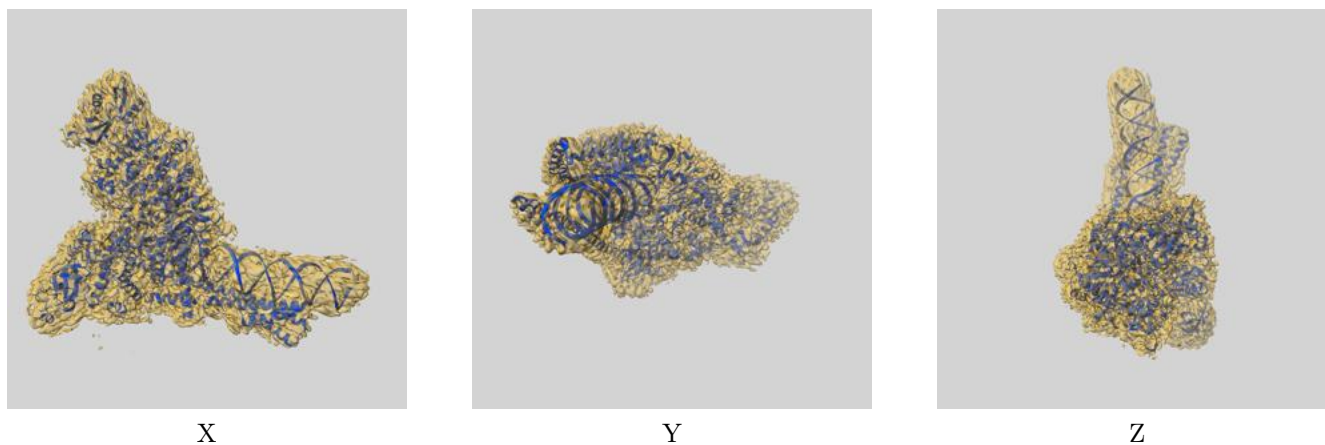
\*Resolution estimate based on FSC curve calculated by comparison of deposited half-maps.



## 9 Map-model fit [i](#)

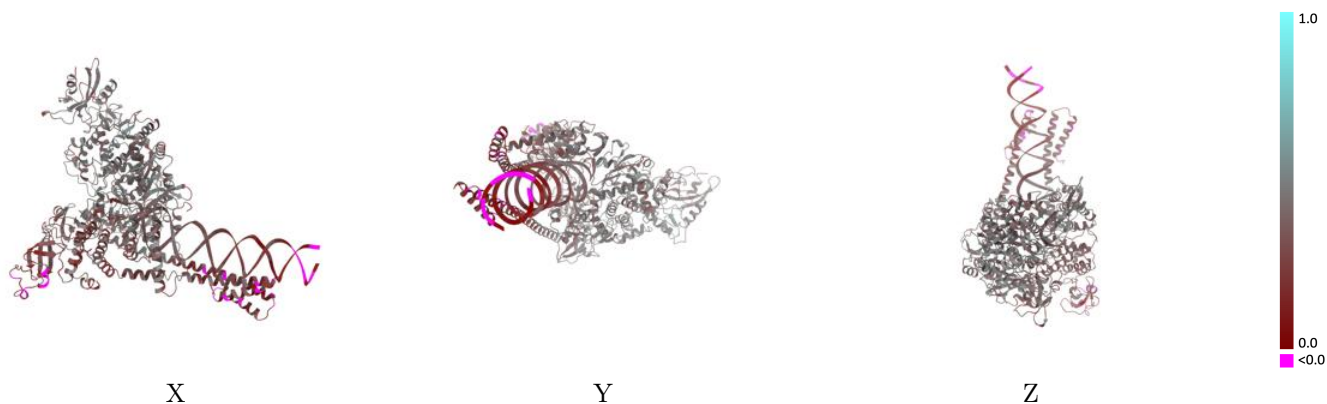
This section contains information regarding the fit between EMDB map EMD-23009 and PDB model 7KRP. Per-residue inclusion information can be found in section 3 on page 7.

### 9.1 Map-model overlay [i](#)



The images above show the 3D surface view of the map at the recommended contour level 0.4 at 50% transparency in yellow overlaid with a ribbon representation of the model coloured in blue. These images allow for the visual assessment of the quality of fit between the atomic model and the map.

## 9.2 Q-score mapped to coordinate model [i](#)



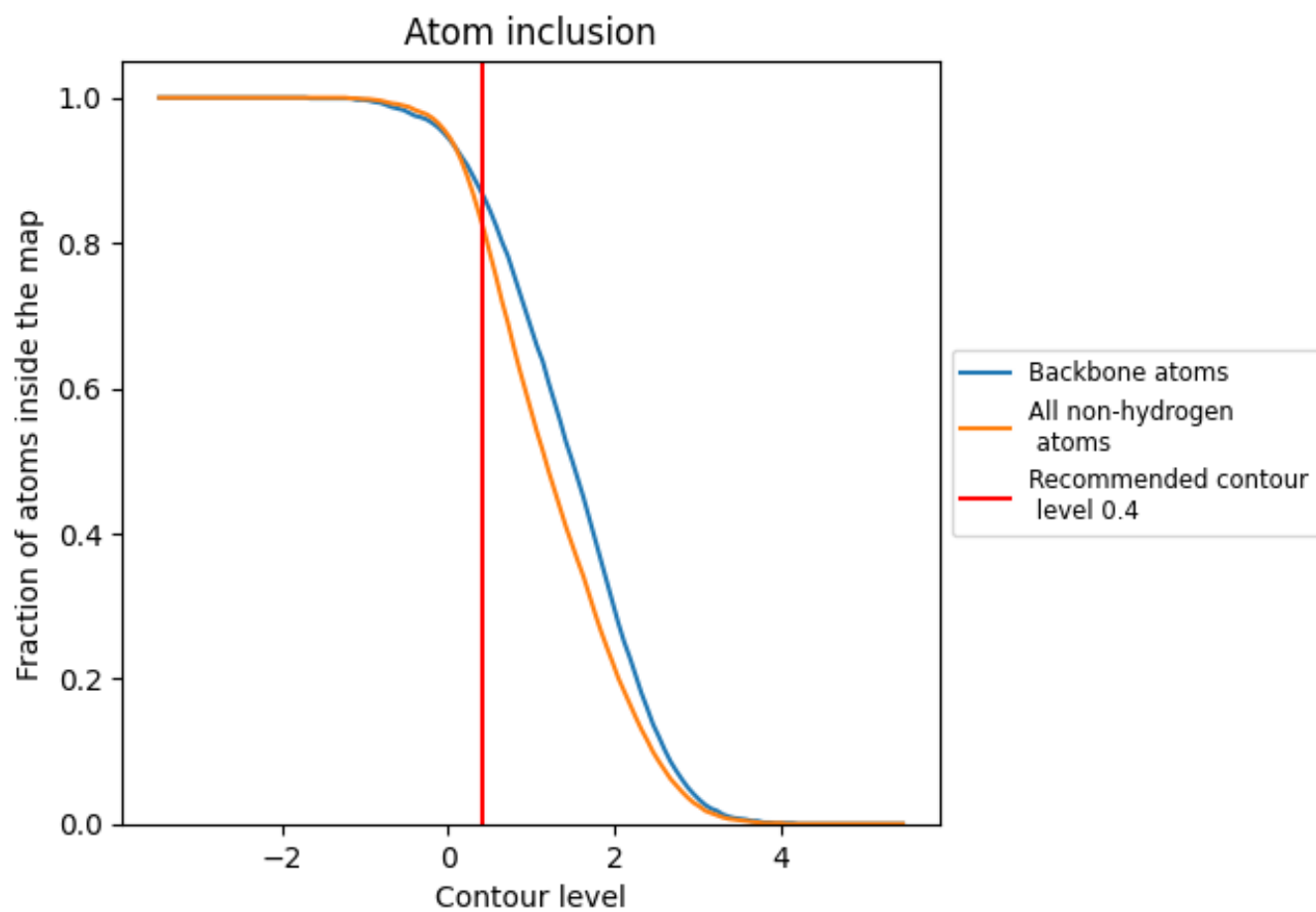
The images above show the model with each residue coloured according to its Q-score. This shows their resolvability in the map with higher Q-score values reflecting better resolvability. Please note: Q-score is calculating the resolvability of atoms, and thus high values are only expected at resolutions at which atoms can be resolved. Low Q-score values may therefore be expected for many entries.

## 9.3 Atom inclusion mapped to coordinate model [i](#)



The images above show the model with each residue coloured according to its atom inclusion. This shows to what extent they are inside the map at the recommended contour level (0.4).



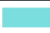











## 9.4 Atom inclusion [i](#)



At the recommended contour level, 87% of all backbone atoms, 83% of all non-hydrogen atoms, are inside the map.

## 9.5 Map-model fit summary [i](#)

The table lists the average atom inclusion at the recommended contour level (0.4) and Q-score for the entire model and for each chain.

Chain	Atom inclusion	Q-score
All	 0.8280	 0.3610
A	 0.8710	 0.4230
B	 0.7660	 0.2980
C	 0.7630	 0.2960
D	 0.7350	 0.2550
P	 0.8040	 0.2360
T	 0.7790	 0.2440

