



Full wwPDB X-ray Structure Validation Report ⓘ

Mar 9, 2018 – 01:40 am GMT

PDB ID : 4KXF
Title : Crystal structure of NLRC4 reveals its autoinhibition mechanism
Authors : Chai, J.; Hu, Z.
Deposited on : 2013-05-25
Resolution : 3.20 Å(reported)

This is a Full wwPDB X-ray Structure Validation Report for a publicly released PDB entry.

We welcome your comments at validation@mail.wwpdb.org

A user guide is available at

<https://www.wwpdb.org/validation/2017/XrayValidationReportHelp>

with specific help available everywhere you see the ⓘ symbol.

The following versions of software and data (see [references ⓘ](#)) were used in the production of this report:

MolProbity : 4.02b-467
Mogul : 1.7.3 (157068), CSD as539be (2018)
Xtriage (Phenix) : 1.13
EDS : trunk30967
Percentile statistics : 20171227.v01 (using entries in the PDB archive December 27th 2017)
Refmac : 5.8.0158
CCP4 : 7.0 (Gargrove)
Ideal geometry (proteins) : Engh & Huber (2001)
Ideal geometry (DNA, RNA) : Parkinson et al. (1996)
Validation Pipeline (wwPDB-VP) : trunk30967

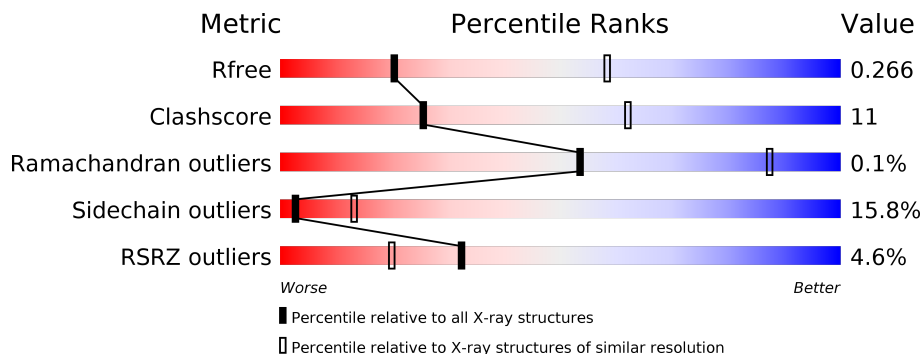
1 Overall quality at a glance

The following experimental techniques were used to determine the structure:

X-RAY DIFFRACTION

The reported resolution of this entry is 3.20 Å.

Percentile scores (ranging between 0-100) for global validation metrics of the entry are shown in the following graphic. The table shows the number of entries on which the scores are based.




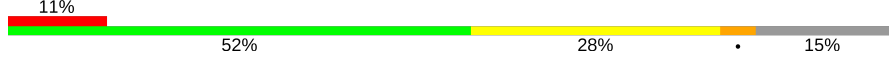
Metric	Whole archive (#Entries)	Similar resolution (#Entries, resolution range(Å))
R_{free}	111664	1121 (3.22-3.18)
Clashscore	122126	1091 (3.20-3.20)
Ramachandran outliers	120053	1074 (3.20-3.20)
Sidechain outliers	120020	1073 (3.20-3.20)
RSRZ outliers	108989	1083 (3.22-3.18)

The table below summarises the geometric issues observed across the polymeric chains and their fit to the electron density. The red, orange, yellow and green segments on the lower bar indicate the fraction of residues that contain outliers for ≥ 3 , 2, 1 and 0 types of geometric quality criteria. A grey segment represents the fraction of residues that are not modelled. The numeric value for each fraction is indicated below the corresponding segment, with a dot representing fractions $\leq 5\%$. The upper red bar (where present) indicates the fraction of residues that have poor fit to the electron density. The numeric value is given above the bar.

Mol	Chain	Length	Quality of chain
1	B	1024	
1	D	1024	
1	F	1024	
1	H	1024	
1	K	1024	
1	L	1024	

Continued on next page...

Continued from previous page...

Mol	Chain	Length	Quality of chain
1	N	1024	 6% 52% 28% 5% 14%
1	P	1024	 11% 52% 28% • 15%

2 Entry composition

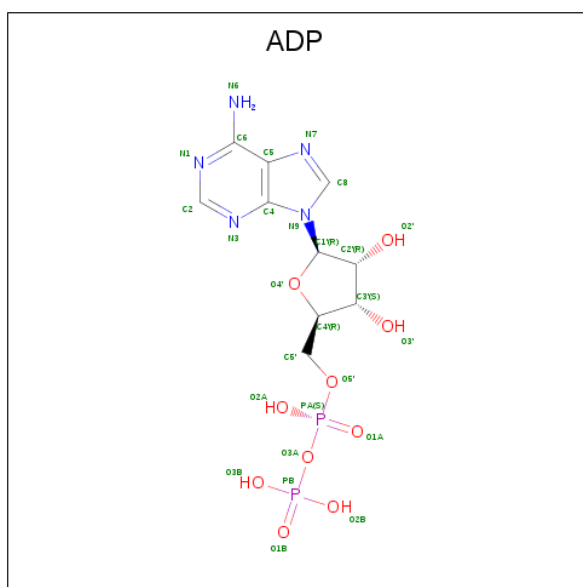
There are 3 unique types of molecules in this entry. The entry contains 57081 atoms, of which 0 are hydrogens and 0 are deuteriums.

In the tables below, the ZeroOcc column contains the number of atoms modelled with zero occupancy, the AltConf column contains the number of residues with at least one atom in alternate conformation and the Trace column contains the number of residues modelled with at most 2 atoms.

- Molecule 1 is a protein called NLR family CARD domain-containing protein 4.

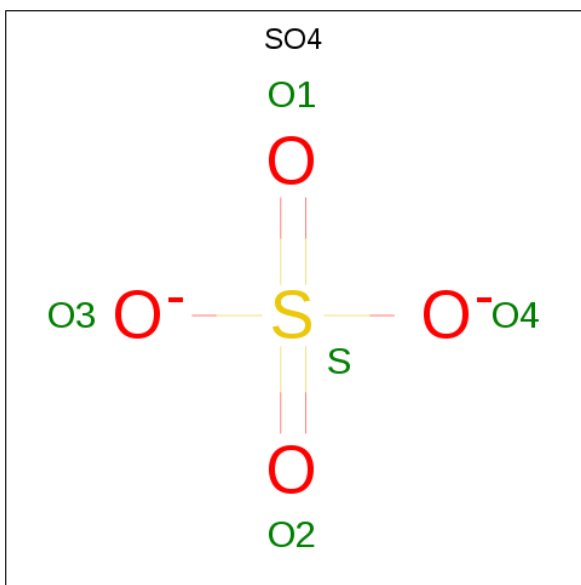
Mol	Chain	Residues	Atoms						ZeroOcc	AltConf	Trace
			Total	C	N	O	P	S			
1	K	904	Total 7208	C 4600	N 1215	O 1352	P 1	S 40	0	0	0
1	B	903	Total 7204	C 4599	N 1222	O 1342	P 1	S 40	0	0	0
1	D	900	Total 7177	C 4581	N 1208	O 1347	P 1	S 40	0	0	0
1	F	899	Total 7172	C 4577	N 1208	O 1346	P 1	S 40	0	0	0
1	H	898	Total 7135	C 4553	N 1201	O 1340	P 1	S 40	0	0	0
1	L	893	Total 7107	C 4540	N 1199	O 1327	P 1	S 40	0	0	0
1	N	882	Total 6996	C 4468	N 1181	O 1307		S 40	0	0	0
1	P	866	Total 6856	C 4377	N 1157	O 1282		S 40	0	0	0

- Molecule 2 is ADENOSINE-5'-DIPHOSPHATE (three-letter code: ADP) (formula: C₁₀H₁₅N₅O₁₀P₂).



Mol	Chain	Residues	Atoms					ZeroOcc	AltConf
			Total	C	N	O	P		
2	K	1	Total 27	C 10	N 5	O 10	P 2	0	0
2	B	1	Total 27	C 10	N 5	O 10	P 2	0	0
2	D	1	Total 27	C 10	N 5	O 10	P 2	0	0
2	F	1	Total 27	C 10	N 5	O 10	P 2	0	0
2	H	1	Total 27	C 10	N 5	O 10	P 2	0	0
2	L	1	Total 27	C 10	N 5	O 10	P 2	0	0
2	N	1	Total 27	C 10	N 5	O 10	P 2	0	0
2	P	1	Total 27	C 10	N 5	O 10	P 2	0	0

- Molecule 3 is SULFATE ION (three-letter code: SO4) (formula: O₄S).

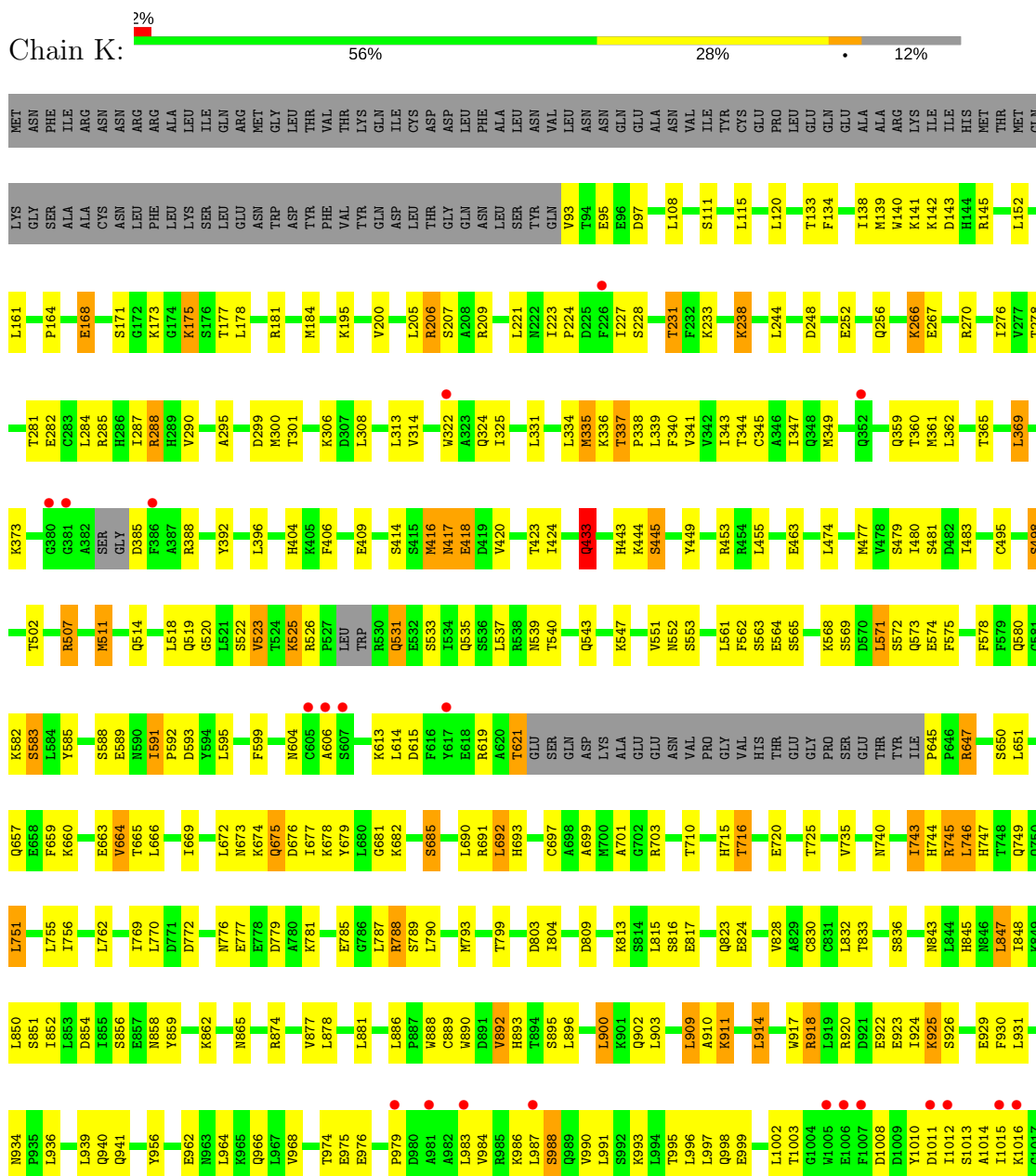


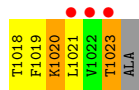
Mol	Chain	Residues	Atoms			ZeroOcc	AltConf
3	B	1	Total	O	S	0	0
			5	4	1		
3	N	1	Total	O	S	0	0
			5	4	1		

3 Residue-property plots [i](#)

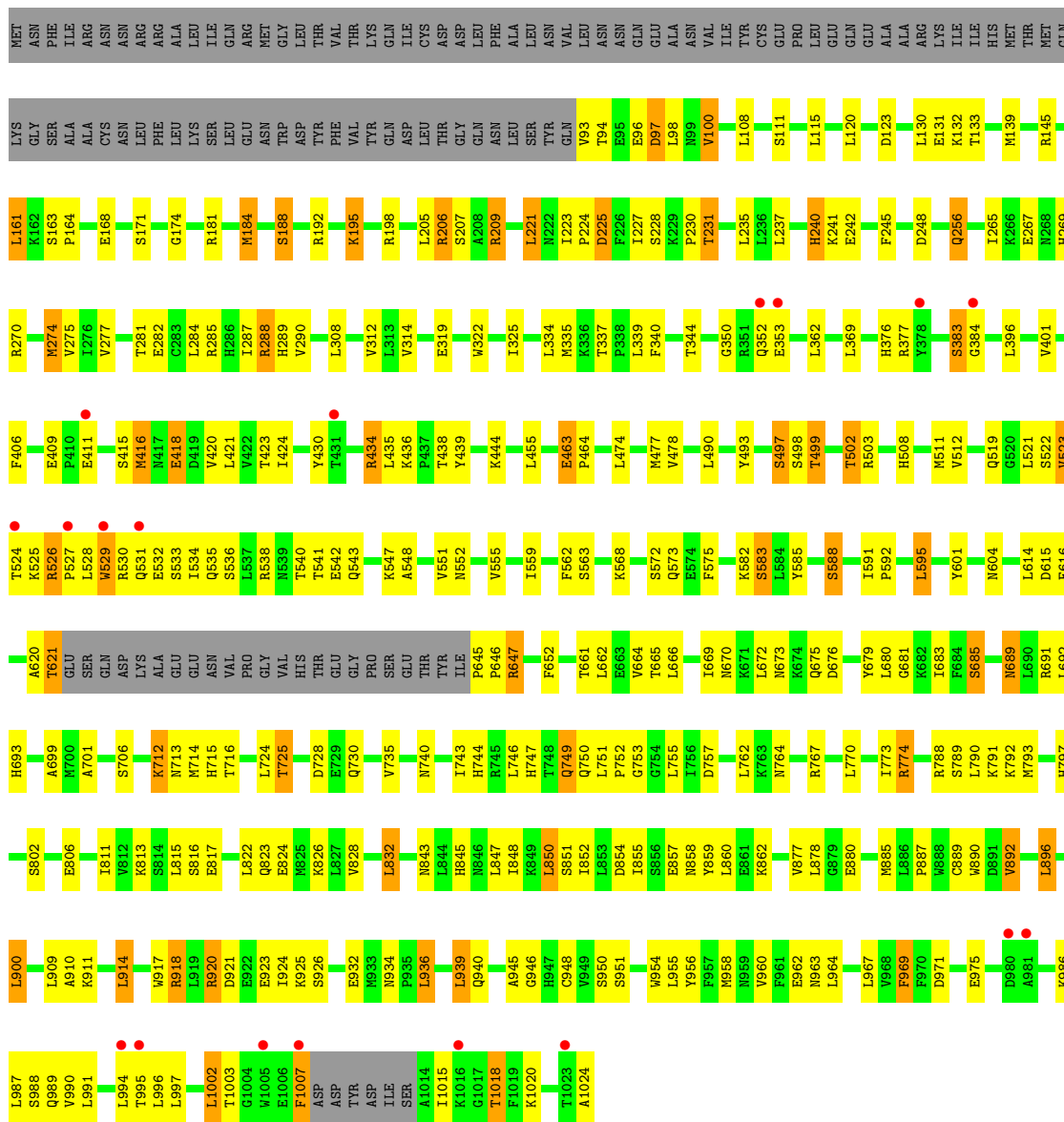
These plots are drawn for all protein, RNA and DNA chains in the entry. The first graphic for a chain summarises the proportions of the various outlier classes displayed in the second graphic. The second graphic shows the sequence view annotated by issues in geometry and electron density. Residues are color-coded according to the number of geometric quality criteria for which they contain at least one outlier: green = 0, yellow = 1, orange = 2 and red = 3 or more. A red dot above a residue indicates a poor fit to the electron density ($RSRZ > 2$). Stretches of 2 or more consecutive residues without any outlier are shown as a green connector. Residues present in the sample, but not in the model, are shown in grey.

- Molecule 1: NLR family CARD domain-containing protein 4



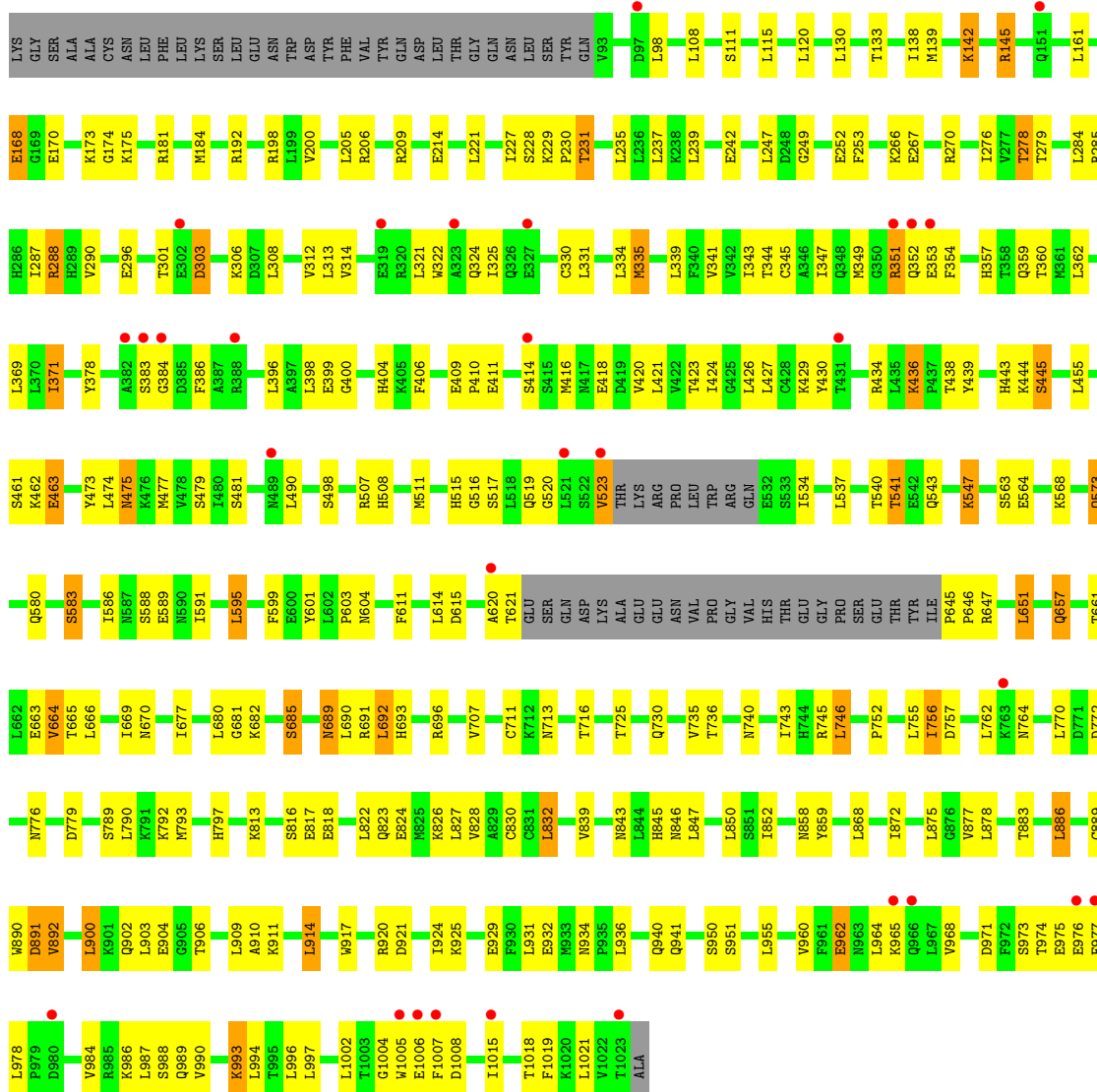


● Molecule 1: NLR family CARD domain-containing protein 4

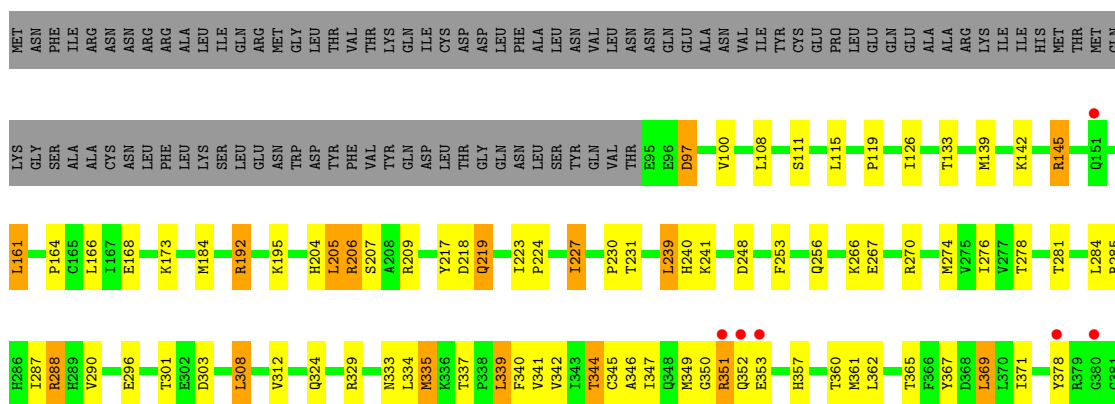


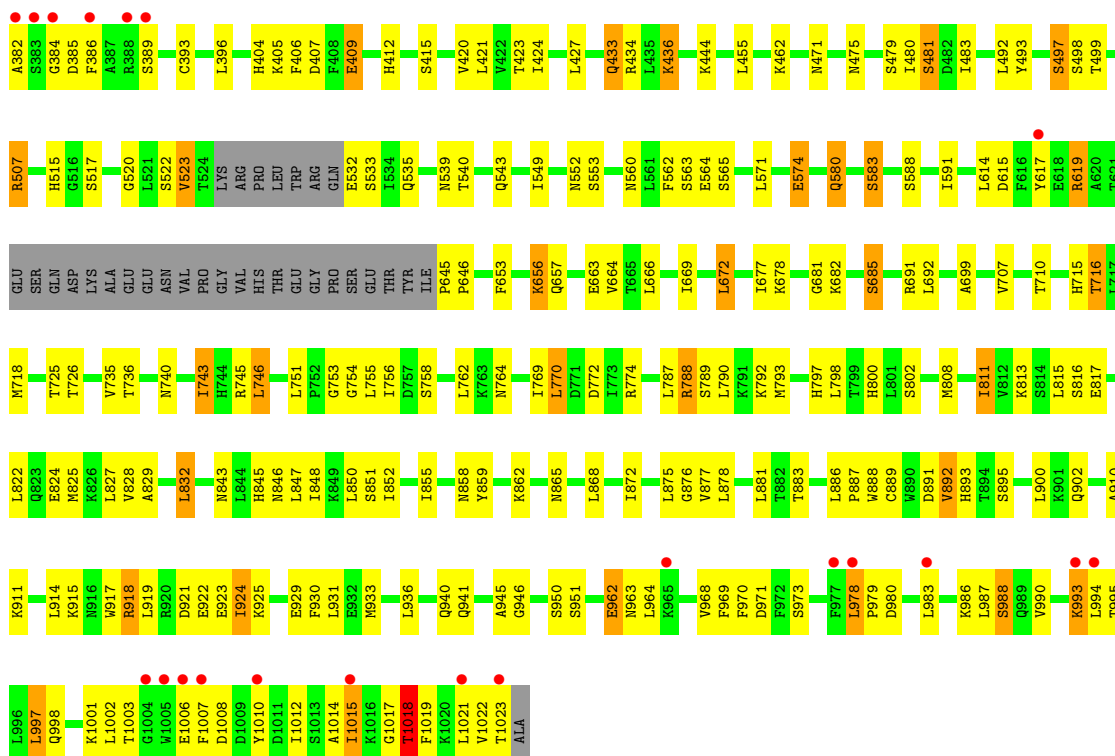
● Molecule 1: NLR family CARD domain-containing protein 4



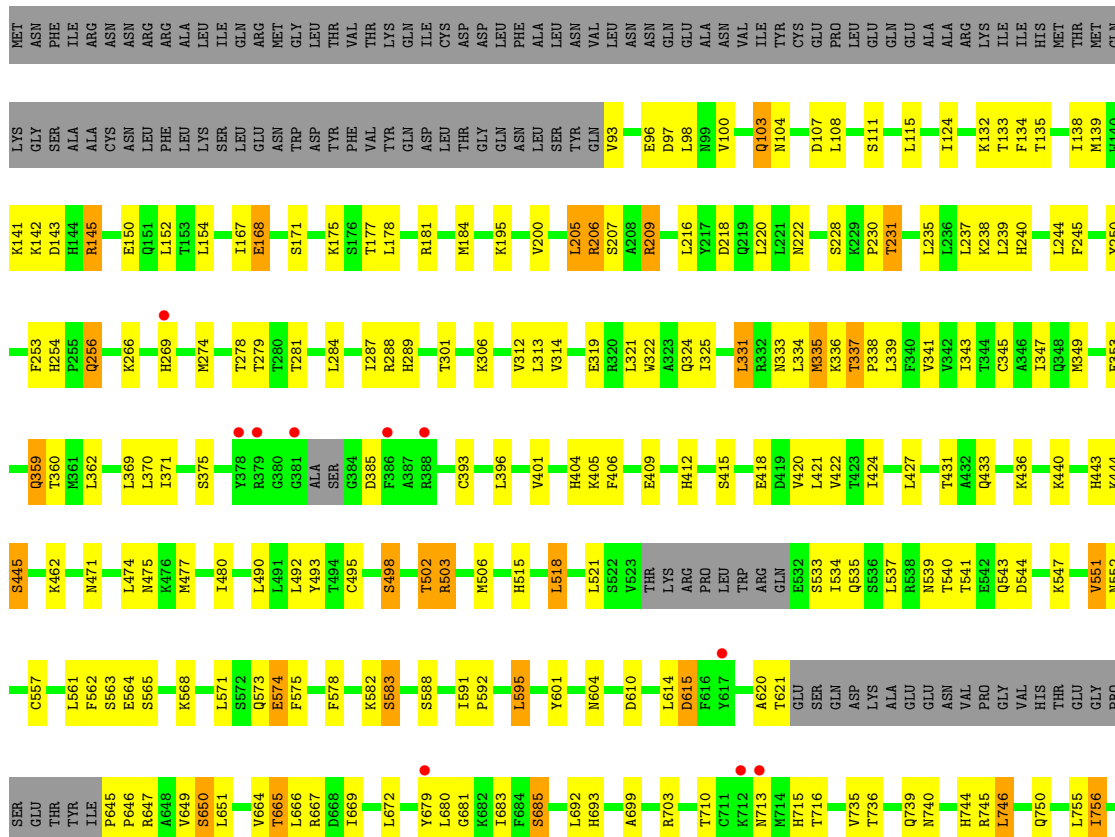


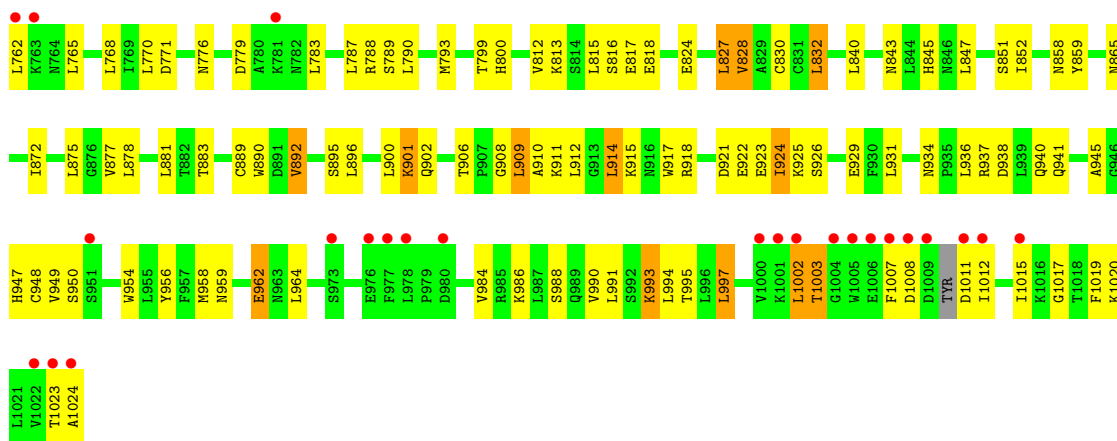
• Molecule 1: NLR family CARD domain-containing protein 4



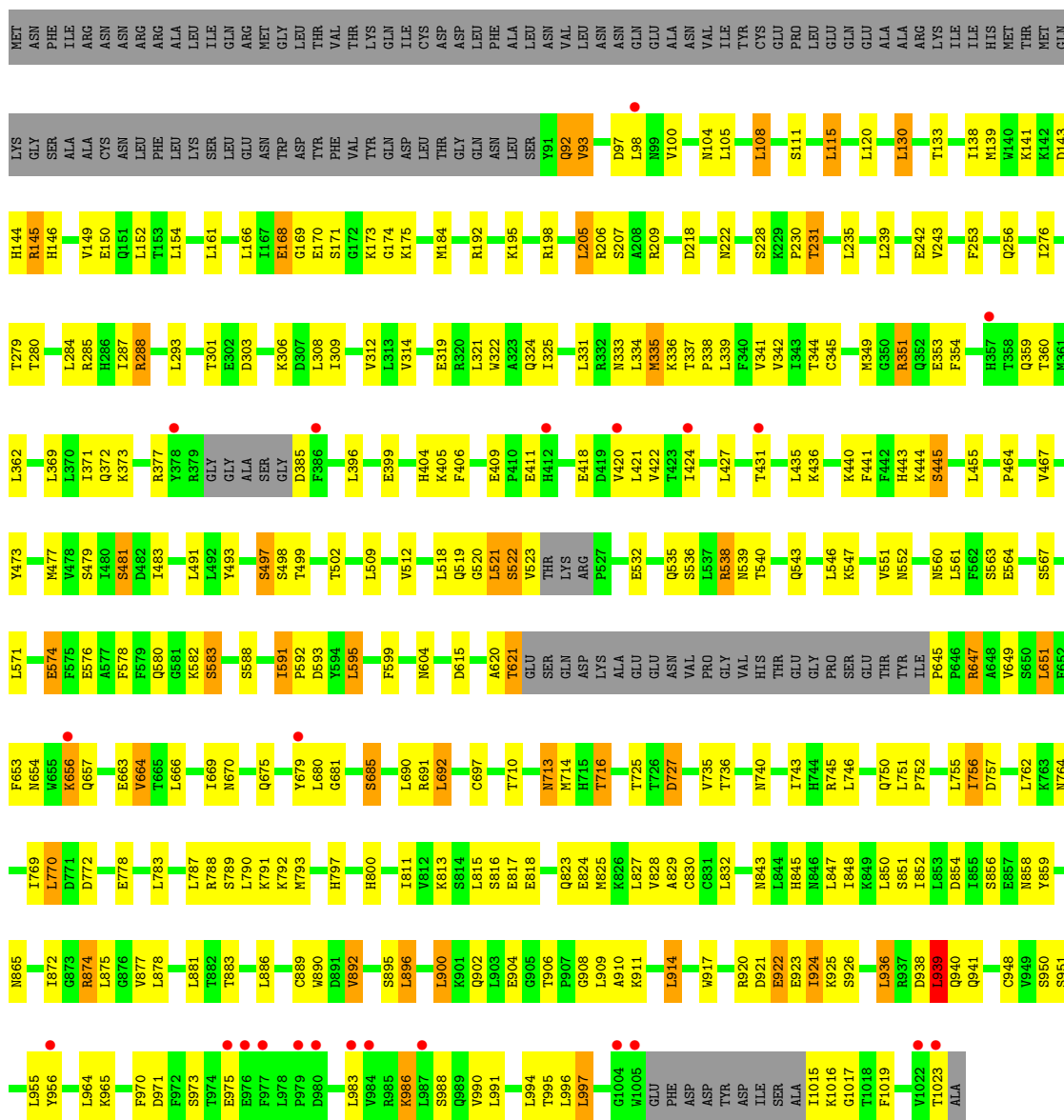


• Molecule 1: NLR family CARD domain-containing protein 4

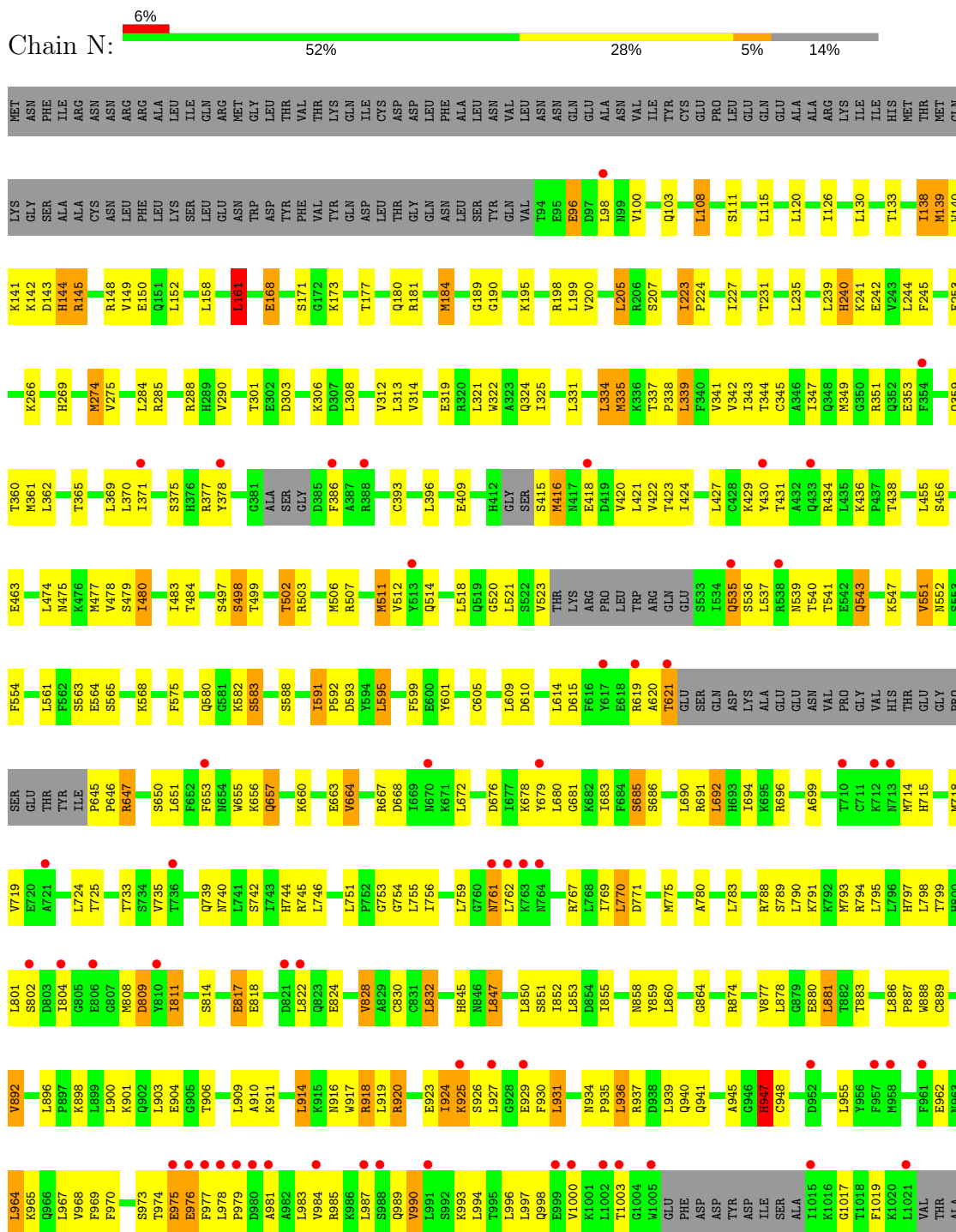




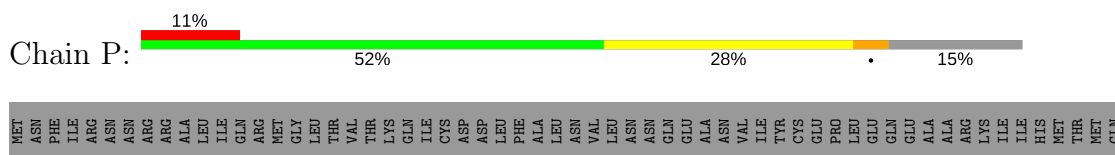
• Molecule 1: NLR family CARD domain-containing protein 4

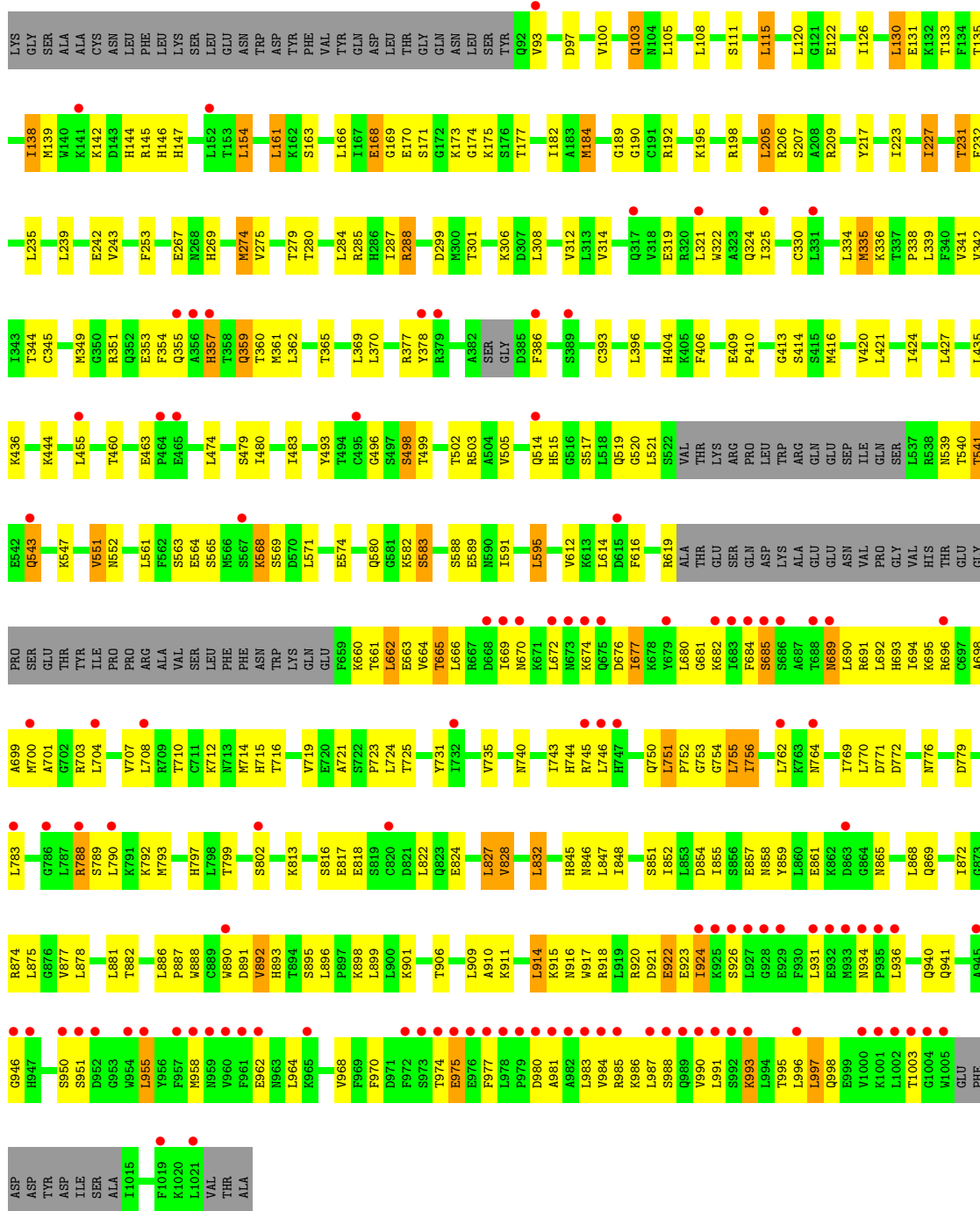


● Molecule 1: NLR family CARD domain-containing protein 4



● Molecule 1: NLR family CARD domain-containing protein 4





4 Data and refinement statistics

Property	Value	Source
Space group	P 41 21 2	Depositor
Cell constants a, b, c, α , β , γ	334.05Å 334.05Å 177.57Å 90.00° 90.00° 90.00°	Depositor
Resolution (Å)	39.33 – 3.20 39.33 – 3.18	Depositor EDS
% Data completeness (in resolution range)	90.9 (39.33-3.20) 89.8 (39.33-3.18)	Depositor EDS
R_{merge}	(Not available)	Depositor
R_{sym}	0.11	Depositor
$\langle I/\sigma(I) \rangle$ ¹	1.84 (at 3.18Å)	Xtrriage
Refinement program	PHENIX (phenix.refine: 1.8_1069)	Depositor
R, R_{free}	0.226 , 0.266 0.227 , 0.266	Depositor DCC
R_{free} test set	7565 reflections (5.04%)	wwPDB-VP
Wilson B-factor (Å ²)	78.8	Xtrriage
Anisotropy	0.007	Xtrriage
Bulk solvent k_{sol} (e/Å ³), B_{sol} (Å ²)	0.29 , 19.3	EDS
L-test for twinning ²	$\langle L \rangle = 0.48$, $\langle L^2 \rangle = 0.31$	Xtrriage
Estimated twinning fraction	No twinning to report.	Xtrriage
F_o, F_c correlation	0.91	EDS
Total number of atoms	57081	wwPDB-VP
Average B, all atoms (Å ²)	31.0	wwPDB-VP

Xtrriage's analysis on translational NCS is as follows: *The largest off-origin peak in the Patterson function is 7.31% of the height of the origin peak. No significant pseudotranslation is detected.*

¹Intensities estimated from amplitudes.

²Theoretical values of $\langle |L| \rangle$, $\langle L^2 \rangle$ for acentric reflections are 0.5, 0.333 respectively for untwinned datasets, and 0.375, 0.2 for perfectly twinned datasets.

5 Model quality i

5.1 Standard geometry i

Bond lengths and bond angles in the following residue types are not validated in this section: SO4, ADP, SEP

The Z score for a bond length (or angle) is the number of standard deviations the observed value is removed from the expected value. A bond length (or angle) with $|Z| > 5$ is considered an outlier worth inspection. RMSZ is the root-mean-square of all Z scores of the bond lengths (or angles).

Mol	Chain	Bond lengths		Bond angles	
		RMSZ	# Z >5	RMSZ	# Z >5
1	B	0.28	0/7330	0.58	1/9897 (0.0%)
1	D	0.27	0/7301	0.53	0/9857
1	F	0.26	0/7296	0.52	0/9851
1	H	0.26	0/7256	0.53	0/9798
1	K	0.27	0/7332	0.57	2/9900 (0.0%)
1	L	0.28	0/7230	0.54	2/9766 (0.0%)
1	N	0.30	0/7119	0.59	2/9616 (0.0%)
1	P	0.27	0/6980	0.55	1/9426 (0.0%)
All	All	0.27	0/57844	0.55	8/78111 (0.0%)

Chiral center outliers are detected by calculating the chiral volume of a chiral center and verifying if the center is modelled as a planar moiety or with the opposite hand. A planarity outlier is detected by checking planarity of atoms in a peptide group, atoms in a mainchain group or atoms of a sidechain that are expected to be planar.

Mol	Chain	#Chirality outliers	#Planarity outliers
1	B	0	1
1	F	0	1
1	K	0	1
1	L	0	1
All	All	0	4

There are no bond length outliers.

All (8) bond angle outliers are listed below:

Mol	Chain	Res	Type	Atoms	Z	Observed(°)	Ideal(°)
1	K	433	GLN	OE1-CD-NE2	-15.42	86.42	121.90
1	N	978	LEU	N-CA-C	-7.16	91.66	111.00
1	N	161	LEU	CA-CB-CG	6.39	130.01	115.30
1	B	161	LEU	CA-CB-CG	6.26	129.69	115.30

Continued on next page...

Continued from previous page...

Mol	Chain	Res	Type	Atoms	Z	Observed(°)	Ideal(°)
1	P	161	LEU	CA-CB-CG	5.76	128.56	115.30
1	K	751	LEU	CA-CB-CG	5.18	127.22	115.30
1	L	874	ARG	NE-CZ-NH1	5.11	122.86	120.30
1	L	939	LEU	CA-CB-CG	5.02	126.84	115.30

There are no chirality outliers.

All (4) planarity outliers are listed below:

Mol	Chain	Res	Type	Group
1	B	531	GLN	Peptide
1	F	412	HIS	Peptide
1	K	433	GLN	Sidechain
1	L	92	GLN	Peptide

5.2 Too-close contacts [i](#)

In the following table, the Non-H and H(model) columns list the number of non-hydrogen atoms and hydrogen atoms in the chain respectively. The H(added) column lists the number of hydrogen atoms added and optimized by MolProbity. The Clashes column lists the number of clashes within the asymmetric unit, whereas Symm-Clashes lists symmetry related clashes.

Mol	Chain	Non-H	H(model)	H(added)	Clashes	Symm-Clashes
1	B	7204	0	7237	163	0
1	D	7177	0	7190	148	0
1	F	7172	0	7186	168	0
1	H	7135	0	7126	156	0
1	K	7208	0	7216	172	2
1	L	7107	0	7104	158	0
1	N	6996	0	6969	197	0
1	P	6856	0	6838	166	0
2	B	27	0	12	1	0
2	D	27	0	12	1	0
2	F	27	0	12	1	0
2	H	27	0	12	0	0
2	K	27	0	12	2	0
2	L	27	0	12	1	0
2	N	27	0	12	0	0
2	P	27	0	12	2	0
3	B	5	0	0	0	0
3	N	5	0	0	0	0
All	All	57081	0	56962	1297	2

The all-atom clashscore is defined as the number of clashes found per 1000 atoms (including hydrogen atoms). The all-atom clashscore for this structure is 11.

All (1297) close contacts within the same asymmetric unit are listed below, sorted by their clash magnitude.

Atom-1	Atom-2	Interatomic distance (Å)	Clash overlap (Å)
1:P:983:LEU:HA	1:P:986:LYS:CB	1.44	1.46
1:P:983:LEU:O	1:P:987:LEU:N	1.59	1.32
1:N:947:HIS:CE1	1:N:974:THR:OG1	1.92	1.22
1:P:983:LEU:CA	1:P:986:LYS:CB	2.32	1.06
1:L:145:ARG:HG2	1:L:523:VAL:HG11	1.39	1.01
1:L:145:ARG:HG2	1:L:523:VAL:CG1	1.89	1.00
1:P:981:ALA:HA	1:P:984:VAL:HB	1.55	0.86
1:N:916:ASN:H	1:N:945:ALA:HB3	1.39	0.85
1:N:947:HIS:ND1	1:N:974:THR:OG1	2.08	0.85
1:N:285:ARG:HH21	1:N:521:LEU:HD21	1.42	0.84
1:N:981:ALA:O	1:N:985:ARG:N	2.10	0.84
1:K:984:VAL:HG11	1:K:1011:ASP:HB3	1.60	0.82
1:N:975:GLU:OE2	1:N:975:GLU:HA	1.67	0.82
1:N:620:ALA:HB1	1:N:680:LEU:HD11	1.62	0.82
1:K:716:THR:HB	1:K:740:ASN:HB2	1.61	0.81
1:P:93:VAL:HG22	1:P:231:THR:HG22	1.62	0.81
1:H:845:HIS:HA	1:H:877:VAL:HG11	1.63	0.80
1:D:142:LYS:NZ	1:D:296:GLU:OE1	2.15	0.80
1:D:205:LEU:HD21	1:D:247:LEU:HB3	1.65	0.79
1:F:788:ARG:NH2	1:F:817:GLU:OE1	2.15	0.79
1:P:955:LEU:HD12	1:P:983:LEU:CB	2.13	0.78
1:B:591:ILE:O	1:B:647:ARG:NH1	2.15	0.78
1:P:962:GLU:HG3	1:P:990:VAL:HG13	1.66	0.78
1:K:911:LYS:HG3	1:K:941:GLN:HG2	1.66	0.78
1:N:975:GLU:OE2	1:N:975:GLU:CA	2.29	0.78
1:H:908:GLY:HA2	1:H:938:ASP:HB2	1.67	0.77
1:H:788:ARG:NH2	1:H:817:GLU:OE1	2.18	0.77
1:L:145:ARG:CG	1:L:523:VAL:HG11	2.14	0.76
1:N:808:MET:HA	1:N:811:ILE:HG23	1.67	0.76
1:P:983:LEU:O	1:P:986:LYS:CA	2.33	0.76
1:B:522:SER:HB3	1:B:525:LYS:HG3	1.65	0.75
1:L:921:ASP:OD1	1:L:950:SER:OG	2.04	0.75
1:K:344:THR:HG22	1:K:362:LEU:HD11	1.66	0.75
1:K:591:ILE:O	1:K:647:ARG:NH1	2.19	0.75
1:N:830:CYS:O	1:N:858:ASN:ND2	2.18	0.75
1:P:745:ARG:HA	1:P:772:ASP:HB3	1.69	0.75
1:H:962:GLU:HG2	1:H:993:LYS:HE3	1.68	0.74

Continued on next page...

Continued from previous page...

Atom-1	Atom-2	Interatomic distance (Å)	Clash overlap (Å)
1:L:874:ARG:HG3	1:L:874:ARG:HH11	1.52	0.73
1:N:783:LEU:HD21	1:N:798:LEU:HD22	1.70	0.73
1:N:975:GLU:O	1:N:976:GLU:CB	2.29	0.73
1:D:205:LEU:HB3	1:D:253:PHE:HB2	1.68	0.73
1:F:285:ARG:NH1	1:F:517:SER:O	2.22	0.73
1:P:719:VAL:HB	1:P:743:ILE:HG22	1.71	0.73
1:P:788:ARG:NH1	1:P:817:GLU:OE2	2.22	0.73
1:D:620:ALA:HB1	1:D:680:LEU:HD11	1.71	0.73
1:N:756:ILE:HD11	1:N:783:LEU:HB2	1.71	0.73
1:H:672:LEU:HB2	1:H:699:ALA:HB1	1.71	0.73
1:K:531:GLN:HG2	1:K:769:ILE:HD13	1.70	0.73
1:L:591:ILE:O	1:L:647:ARG:NH1	2.21	0.72
1:P:921:ASP:OD1	1:P:950:SER:OG	2.07	0.72
1:L:716:THR:HB	1:L:740:ASN:HB2	1.71	0.72
1:P:816:SER:O	1:P:846:ASN:ND2	2.22	0.72
1:P:845:HIS:HA	1:P:877:VAL:HG11	1.69	0.72
1:B:288:ARG:NH2	1:B:522:SER:O	2.23	0.72
1:F:816:SER:O	1:F:846:ASN:ND2	2.22	0.72
1:B:816:SER:HB2	1:B:843:ASN:HB2	1.71	0.72
1:D:830:CYS:O	1:D:858:ASN:ND2	2.23	0.72
1:K:621:THR:OG1	1:K:676:ASP:OD1	2.08	0.72
1:H:620:ALA:HB1	1:H:680:LEU:HD11	1.71	0.72
1:B:621:THR:OG1	1:B:676:ASP:OD1	2.08	0.71
1:L:908:GLY:HA2	1:L:938:ASP:HB2	1.72	0.71
1:K:284:LEU:HG	1:K:288:ARG:HG3	1.72	0.71
1:P:716:THR:HG22	1:P:740:ASN:HD22	1.54	0.71
1:F:552:ASN:OD1	1:F:583:SER:OG	2.09	0.71
1:B:701:ALA:O	1:B:725:THR:OG1	2.07	0.70
1:L:170:GLU:O	1:L:175:LYS:NZ	2.24	0.70
1:B:1002:LEU:HD23	1:B:1007:PHE:HE2	1.55	0.70
1:L:681:GLY:O	1:L:685:SER:OG	2.09	0.70
1:N:973:SER:O	1:N:974:THR:OG1	2.09	0.70
1:B:184:MET:O	1:B:188:SER:OG	2.10	0.70
1:H:592:PRO:HD2	1:H:595:LEU:HD23	1.74	0.70
1:K:675:GLN:HA	1:K:678:LYS:HE2	1.74	0.70
1:L:552:ASN:OD1	1:L:583:SER:OG	2.11	0.69
1:L:334:LEU:HD23	1:L:362:LEU:HD22	1.75	0.69
1:P:324:GLN:HE22	1:P:354:PHE:H	1.40	0.69
1:F:344:THR:HG23	1:F:362:LEU:HD11	1.74	0.69
1:K:526:ARG:HD2	1:K:999:GLU:HB2	1.75	0.69
1:L:98:LEU:HD13	1:L:235:LEU:HD11	1.74	0.69

Continued on next page...

Continued from previous page...

Atom-1	Atom-2	Interatomic distance (Å)	Clash overlap (Å)
1:P:170:GLU:O	1:P:175:LYS:NZ	2.25	0.69
1:P:983:LEU:O	1:P:986:LYS:C	2.29	0.69
1:K:369:LEU:HD22	1:K:373:LYS:HD3	1.75	0.69
1:N:591:ILE:O	1:N:647:ARG:NH1	2.26	0.68
1:P:958:MET:HB3	1:P:990:VAL:HG21	1.75	0.68
1:N:974:THR:HG22	1:N:975:GLU:H	1.58	0.68
1:D:911:LYS:HG2	1:D:941:GLN:HG2	1.74	0.68
1:D:463:GLU:HG3	1:F:774:ARG:HH22	1.58	0.68
1:H:256:GLN:HG2	1:L:230:PRO:HG3	1.75	0.68
1:P:324:GLN:NE2	1:P:354:PHE:O	2.27	0.68
1:D:383:SER:OG	1:D:384:GLY:N	2.26	0.68
1:F:288:ARG:NH1	1:F:522:SER:O	2.26	0.68
1:P:93:VAL:HG21	1:P:235:LEU:HB2	1.76	0.68
1:K:845:HIS:HA	1:K:877:VAL:HG11	1.77	0.67
1:P:515:HIS:CD2	1:P:547:LYS:HD3	2.28	0.67
1:F:334:LEU:HD13	1:F:362:LEU:HD22	1.76	0.67
1:P:163:SER:HB2	1:P:274:MET:HE3	1.77	0.67
1:K:788:ARG:NH1	1:K:817:GLU:OE1	2.27	0.67
1:B:256:GLN:HG2	1:F:230:PRO:HG3	1.77	0.67
1:B:592:PRO:HD2	1:B:595:LEU:HD23	1.76	0.67
1:K:552:ASN:OD1	1:K:583:SER:OG	2.12	0.67
1:B:681:GLY:O	1:B:685:SER:OG	2.13	0.66
1:K:228:SER:HG	1:K:231:THR:HG1	1.39	0.66
1:L:920:ARG:NH2	1:L:922:GLU:OE1	2.28	0.66
1:N:552:ASN:OD1	1:N:583:SER:OG	2.13	0.66
1:N:920:ARG:HG2	1:N:923:GLU:HG2	1.77	0.66
1:F:142:LYS:NZ	1:F:296:GLU:OE1	2.29	0.66
1:B:896:LEU:HD12	1:B:923:GLU:HB3	1.77	0.66
1:D:344:THR:HG22	1:D:362:LEU:HD11	1.78	0.66
1:P:174:GLY:N	2:P:1101:ADP:O3B	2.28	0.66
1:K:681:GLY:O	1:K:685:SER:OG	2.13	0.66
1:N:224:PRO:HB2	1:N:227:ILE:HG13	1.78	0.66
1:K:824:GLU:HG2	1:K:852:ILE:HB	1.77	0.66
1:F:285:ARG:NH1	1:F:481:SER:OG	2.30	0.65
1:N:918:ARG:NH2	1:N:948:CYS:SG	2.61	0.65
1:N:98:LEU:HD11	1:N:199:LEU:HD11	1.77	0.65
1:P:983:LEU:O	1:P:986:LYS:N	2.29	0.65
1:D:540:THR:HG23	1:D:541:THR:HG22	1.78	0.65
1:K:417:ASN:N	1:K:417:ASN:OD1	2.29	0.65
1:L:166:LEU:HD22	1:L:287:ILE:HD12	1.78	0.65
1:N:416:MET:SD	1:N:416:MET:N	2.68	0.65

Continued on next page...

Continued from previous page...

Atom-1	Atom-2	Interatomic distance (Å)	Clash overlap (Å)
1:N:975:GLU:OE2	1:N:975:GLU:N	2.30	0.65
1:L:830:CYS:O	1:L:858:ASN:ND2	2.26	0.65
1:P:975:GLU:O	1:P:977:PHE:N	2.30	0.65
1:D:568:LYS:HD3	1:D:601:TYR:CZ	2.31	0.65
1:K:511:MET:O	1:K:511:MET:HG2	1.97	0.65
1:N:681:GLY:O	1:N:685:SER:OG	2.14	0.65
1:P:227:ILE:HD11	1:P:232:PHE:HD1	1.60	0.65
1:L:727:ASP:OD2	1:L:727:ASP:N	2.29	0.65
1:B:334:LEU:HD13	1:B:362:LEU:HD22	1.78	0.65
1:B:228:SER:OG	1:B:231:THR:OG1	2.10	0.65
1:F:754:GLY:O	1:F:758:SER:OG	2.13	0.64
1:K:968:VAL:HG13	1:K:998:GLN:HB2	1.78	0.64
1:P:981:ALA:O	1:P:984:VAL:N	2.30	0.64
1:D:325:ILE:HD11	1:D:335:MET:HE2	1.80	0.64
1:F:533:SEP:O1P	1:F:535:GLN:NE2	2.30	0.64
1:L:592:PRO:HD2	1:L:595:LEU:HD22	1.80	0.64
1:F:350:GLY:HA3	1:F:369:LEU:HD11	1.80	0.64
1:F:808:MET:HA	1:F:811:ILE:HG23	1.78	0.64
1:B:963:ASN:HD21	1:F:986:LYS:HE3	1.62	0.64
1:K:526:ARG:NH2	1:K:1020:LYS:HB3	2.13	0.64
1:H:98:LEU:HD13	1:H:235:LEU:HD11	1.80	0.63
1:K:224:PRO:HB2	1:K:227:ILE:HG13	1.79	0.63
1:N:344:THR:HG22	1:N:362:LEU:HD11	1.80	0.63
1:N:845:HIS:HA	1:N:877:VAL:HG11	1.79	0.63
1:N:718:MET:HG2	1:N:742:SER:HB3	1.80	0.63
1:B:284:LEU:HG	1:B:288:ARG:HG3	1.80	0.63
1:B:588:SER:OG	1:B:615:ASP:O	2.15	0.63
1:D:816:SER:O	1:D:846:ASN:ND2	2.31	0.63
1:K:325:ILE:HG12	1:K:331:LEU:HD23	1.78	0.63
1:B:661:THR:HG23	1:B:689:ASN:HB3	1.80	0.63
1:D:910:ALA:O	1:D:940:GLN:N	2.28	0.63
1:L:713:ASN:OD1	1:L:713:ASN:N	2.31	0.63
1:F:588:SER:HB2	1:F:645:PRO:HD2	1.80	0.62
1:K:787:LEU:HD13	1:K:815:LEU:HD21	1.80	0.62
1:L:620:ALA:HB1	1:L:680:LEU:HD11	1.81	0.62
1:N:663:GLU:OE2	1:N:691:ARG:NH1	2.31	0.62
1:D:962:GLU:HG2	1:D:993:LYS:HD2	1.80	0.62
1:H:145:ARG:NH2	1:H:533:SEP:O1P	2.33	0.62
1:H:552:ASN:OD1	1:H:583:SER:OG	2.16	0.62
1:L:851:SER:HA	1:L:881:LEU:HA	1.80	0.62
1:F:480:ILE:HG12	1:F:515:HIS:HA	1.81	0.62

Continued on next page...

Continued from previous page...

Atom-1	Atom-2	Interatomic distance (Å)	Clash overlap (Å)
1:K:663:GLU:OE2	1:K:691:ARG:NH1	2.32	0.62
1:D:284:LEU:HG	1:D:288:ARG:HG3	1.80	0.62
1:P:983:LEU:C	1:P:986:LYS:H	2.02	0.62
1:B:925:LYS:HA	1:B:956:TYR:HE2	1.64	0.62
1:F:340:PHE:O	1:F:344:THR:OG1	2.17	0.62
1:H:1002:LEU:HD23	1:H:1007:PHE:HE2	1.63	0.62
1:B:289:HIS:CD2	1:B:290:VAL:HG23	2.35	0.62
1:D:852:ILE:HG12	1:D:883:THR:HB	1.82	0.62
1:F:962:GLU:HG2	1:F:993:LYS:HD2	1.82	0.62
1:F:206:ARG:HG2	1:F:207:SER:N	2.13	0.62
1:H:824:GLU:HG2	1:H:852:ILE:HB	1.81	0.62
1:F:681:GLY:O	1:F:685:SER:OG	2.17	0.62
1:L:845:HIS:HA	1:L:877:VAL:HG11	1.80	0.62
1:N:983:LEU:O	1:N:987:LEU:HB2	2.00	0.62
1:P:743:ILE:HD11	1:P:755:LEU:HD11	1.81	0.61
1:D:378:TYR:HD1	1:D:386:PHE:HD1	1.45	0.61
1:N:847:LEU:HD13	1:N:850:LEU:HD13	1.82	0.61
1:B:163:SER:HB2	1:B:274:MET:HE3	1.82	0.61
1:B:123:ASP:OD1	1:B:377:ARG:NH2	2.31	0.61
1:B:526:ARG:HB3	1:B:527:PRO:HD3	1.82	0.61
1:D:399:GLU:OE1	1:D:473:TYR:OH	2.16	0.61
1:D:267:GLU:OE1	1:D:270:ARG:NH1	2.33	0.61
1:K:809:ASP:OD1	1:K:833:THR:OG1	2.18	0.61
1:K:859:TYR:CE1	1:K:889:CYS:HA	2.36	0.61
1:L:205:LEU:HB3	1:L:253:PHE:HB2	1.80	0.61
1:H:924:ILE:HG12	1:H:949:VAL:HG21	1.82	0.61
1:F:672:LEU:HB2	1:F:699:ALA:HB1	1.81	0.60
1:K:335:MET:HE3	1:K:341:VAL:HA	1.83	0.60
1:F:161:LEU:HD11	1:F:276:ILE:HD11	1.82	0.60
1:N:621:THR:OG1	1:N:676:ASP:OD1	2.19	0.60
1:D:868:LEU:HD11	1:D:886:LEU:HD13	1.83	0.60
1:H:108:LEU:O	1:H:111:SER:OG	2.20	0.60
1:L:143:ASP:OD2	1:L:144:HIS:N	2.34	0.60
1:N:809:ASP:N	1:N:809:ASP:OD2	2.35	0.60
1:P:981:ALA:O	1:P:985:ARG:N	2.29	0.60
1:P:962:GLU:HG2	1:P:993:LYS:HD2	1.82	0.60
1:F:224:PRO:HB2	1:F:227:ILE:HG23	1.83	0.60
1:H:744:HIS:NE2	1:H:771:ASP:OD2	2.34	0.60
1:L:145:ARG:HG2	1:L:523:VAL:CB	2.31	0.60
1:P:217:TYR:HA	1:P:223:ILE:HD13	1.83	0.60
1:K:200:VAL:HG22	1:K:244:LEU:HB3	1.83	0.60

Continued on next page...

Continued from previous page...

Atom-1	Atom-2	Interatomic distance (Å)	Clash overlap (Å)
1:P:154:LEU:HD21	1:P:182:ILE:HG12	1.83	0.60
1:F:745:ARG:HA	1:F:772:ASP:HB3	1.84	0.60
1:H:666:LEU:HB3	1:H:669:ILE:HD12	1.84	0.60
1:K:141:LYS:HB2	1:K:152:LEU:HD11	1.84	0.60
1:N:973:SER:C	1:N:974:THR:OG1	2.39	0.60
1:D:921:ASP:OD1	1:D:950:SER:OG	2.20	0.60
1:L:971:ASP:OD1	1:L:973:SER:OG	2.18	0.60
1:D:971:ASP:OD1	1:D:973:SER:OG	2.19	0.60
1:B:614:LEU:HD11	1:B:652:PHE:HZ	1.67	0.60
1:B:749:GLN:OE1	1:B:750:GLN:N	2.34	0.60
1:P:619:ARG:H	1:P:669:ILE:HG12	1.67	0.60
1:H:250:TYR:OH	1:H:266:LYS:NZ	2.34	0.59
1:B:987:LEU:O	1:B:991:LEU:HB2	2.02	0.59
1:F:971:ASP:OD1	1:F:973:SER:OG	2.19	0.59
1:K:299:ASP:HB3	1:K:336:LYS:HB3	1.84	0.59
1:H:288:ARG:HH21	1:H:521:LEU:HA	1.66	0.59
1:K:672:LEU:HB2	1:K:699:ALA:HB1	1.85	0.59
1:N:889:CYS:SG	1:N:892:VAL:HG13	2.43	0.59
1:P:681:GLY:O	1:P:685:SER:OG	2.20	0.59
1:H:875:LEU:HB2	1:H:902:GLN:HG2	1.83	0.59
1:K:701:ALA:O	1:K:725:THR:OG1	2.18	0.59
1:B:824:GLU:HG2	1:B:852:ILE:HB	1.84	0.59
1:N:920:ARG:HA	1:N:948:CYS:O	2.03	0.59
1:D:306:LYS:HD2	1:D:322:TRP:CE2	2.37	0.59
1:K:888:TRP:HH2	1:F:507:ARG:HE	1.50	0.59
1:H:921:ASP:OD1	1:H:950:SER:OG	2.20	0.59
1:B:377:ARG:NH1	1:B:423:THR:O	2.36	0.59
1:H:925:LYS:HA	1:H:956:TYR:HE2	1.67	0.59
1:K:606:ALA:HB1	1:K:659:PHE:HE1	1.68	0.59
1:N:919:LEU:O	1:N:948:CYS:N	2.35	0.59
1:P:551:VAL:HG22	1:P:582:LYS:HG2	1.84	0.59
1:K:865:ASN:OD1	1:K:895:SER:OG	2.21	0.58
1:H:716:THR:HG22	1:H:740:ASN:HD22	1.69	0.58
1:H:914:LEU:HB3	1:H:917:TRP:CG	2.38	0.58
1:P:858:ASN:HB2	1:P:887:PRO:HB3	1.85	0.58
1:B:209:ARG:NH1	1:F:218:ASP:OD1	2.31	0.58
1:F:204:HIS:H	1:F:219:GLN:HE22	1.51	0.58
1:N:430:TYR:HA	1:N:431:THR:OG1	2.03	0.58
1:P:983:LEU:C	1:P:986:LYS:CB	2.72	0.58
1:D:588:SER:OG	1:D:615:ASP:O	2.16	0.58
1:B:845:HIS:HA	1:B:877:VAL:HG11	1.84	0.58

Continued on next page...

Continued from previous page...

Atom-1	Atom-2	Interatomic distance (Å)	Clash overlap (Å)
1:F:940:GLN:O	1:F:968:VAL:N	2.31	0.58
1:L:174:GLY:N	2:L:1101:ADP:O2B	2.34	0.58
1:P:146:HIS:CE1	1:P:288:ARG:HD3	2.38	0.58
1:F:378:TYR:HD2	1:F:386:PHE:HD1	1.51	0.58
1:B:533:SEP:O3P	1:B:665:THR:OG1	2.18	0.58
1:D:666:LEU:HB3	1:D:669:ILE:HD12	1.86	0.58
1:L:852:ILE:HG12	1:L:883:THR:HB	1.85	0.58
1:B:376:HIS:CD2	1:H:103:GLN:HG3	2.38	0.57
1:F:535:GLN:O	1:F:539:ASN:HB2	2.04	0.57
1:N:592:PRO:HD2	1:N:595:LEU:HD23	1.86	0.57
1:H:872:ILE:HA	1:H:875:LEU:HG	1.86	0.57
1:L:750:GLN:HG3	1:L:756:ILE:HD11	1.85	0.57
1:N:168:GLU:HB3	1:N:284:LEU:HD13	1.87	0.57
1:D:588:SER:HB2	1:D:645:PRO:HG2	1.87	0.57
1:D:603:PRO:HA	1:D:657:GLN:HE21	1.70	0.57
1:N:377:ARG:NH2	1:N:423:THR:O	2.37	0.57
1:N:920:ARG:H	1:N:923:GLU:HB2	1.68	0.57
1:K:593:ASP:OD1	1:K:647:ARG:NH2	2.36	0.57
1:P:308:LEU:O	1:P:312:VAL:HG22	2.05	0.57
1:D:475:ASN:HA	1:D:508:HIS:CE1	2.40	0.57
1:K:745:ARG:HA	1:K:772:ASP:HB3	1.86	0.57
1:N:927:LEU:O	1:N:931:LEU:HB2	2.04	0.57
1:B:376:HIS:HD2	1:H:103:GLN:HG3	1.68	0.57
1:H:200:VAL:HG22	1:H:244:LEU:HB3	1.87	0.57
1:P:704:LEU:HD22	1:P:724:LEU:HD11	1.85	0.57
1:N:141:LYS:HB2	1:N:152:LEU:HD21	1.86	0.57
1:N:733:THR:O	1:N:761:ASN:ND2	2.37	0.57
1:B:889:CYS:O	1:B:892:VAL:HG22	2.05	0.57
1:F:743:ILE:HD11	1:F:746:LEU:HB2	1.86	0.56
1:K:592:PRO:HD2	1:K:595:LEU:HD22	1.85	0.56
1:B:192:ARG:HA	1:B:195:LYS:HE3	1.86	0.56
1:D:249:GLY:H	1:D:278:THR:HG22	1.70	0.56
1:B:230:PRO:HG3	1:F:256:GLN:HG2	1.86	0.56
1:K:588:SER:OG	1:K:615:ASP:O	2.20	0.56
1:N:245:PHE:HB2	1:N:275:VAL:HG12	1.87	0.56
1:P:205:LEU:HB3	1:P:253:PHE:HB2	1.86	0.56
1:F:571:LEU:O	1:F:574:GLU:HG2	2.05	0.56
1:L:344:THR:HG22	1:L:362:LEU:HD11	1.87	0.56
1:P:817:GLU:HB3	1:P:818:GLU:HG3	1.87	0.56
1:L:875:LEU:HB2	1:L:902:GLN:HG2	1.88	0.56
1:N:308:LEU:O	1:N:312:VAL:HG22	2.05	0.56

Continued on next page...

Continued from previous page...

Atom-1	Atom-2	Interatomic distance (Å)	Clash overlap (Å)
1:F:339:LEU:O	1:F:342:VAL:HG22	2.06	0.56
1:K:940:GLN:O	1:K:968:VAL:N	2.33	0.56
1:N:668:ASP:OD2	1:N:696:ARG:NH1	2.38	0.56
1:N:967:LEU:HD21	1:N:970:PHE:HB3	1.86	0.56
1:D:174:GLY:N	2:D:1101:ADP:O3B	2.36	0.56
1:L:663:GLU:OE2	1:L:691:ARG:NH1	2.38	0.56
1:L:756:ILE:HG22	1:L:783:LEU:HD13	1.86	0.56
1:P:413:GLY:O	1:P:414:SER:HB2	2.05	0.56
1:P:764:ASN:HA	1:P:792:LYS:HD3	1.85	0.56
1:D:308:LEU:O	1:D:312:VAL:HG22	2.05	0.56
1:F:716:THR:HB	1:F:740:ASN:HB2	1.86	0.56
1:F:868:LEU:HD11	1:F:886:LEU:HD22	1.88	0.56
1:K:803:ASP:HB2	1:F:462:LYS:HA	1.86	0.56
1:L:567:SER:HB2	1:L:571:LEU:HD23	1.88	0.56
1:B:921:ASP:OD1	1:B:950:SER:OG	2.22	0.56
1:D:434:ARG:HD3	1:D:438:THR:HB	1.87	0.56
1:D:443:HIS:ND1	1:D:445:SER:OG	2.37	0.56
1:K:340:PHE:O	1:K:344:THR:HG23	2.06	0.56
1:K:851:SER:HA	1:K:881:LEU:HA	1.88	0.56
1:L:141:LYS:HB2	1:L:152:LEU:HD11	1.87	0.56
1:N:678:LYS:HE2	1:N:679:TYR:CE1	2.41	0.56
1:K:360:THR:OG1	1:K:564:GLU:OE1	2.17	0.56
1:N:140:TRP:HB3	1:N:148:ARG:HB3	1.88	0.56
1:P:983:LEU:C	1:P:986:LYS:N	2.58	0.56
1:K:925:LYS:O	1:K:929:GLU:HG3	2.05	0.56
1:N:920:ARG:O	1:N:924:ILE:N	2.31	0.56
1:B:532:GLU:OE2	1:B:533:SEP:N	2.39	0.55
1:H:325:ILE:HD13	1:H:331:LEU:HD13	1.86	0.55
1:H:371:ILE:O	1:H:375:SER:OG	2.13	0.55
1:L:535:GLN:O	1:L:539:ASN:HB2	2.06	0.55
1:P:344:THR:HG22	1:P:362:LEU:HD11	1.89	0.55
1:F:108:LEU:O	1:F:111:SER:OG	2.23	0.55
1:P:539:ASN:ND2	1:P:541:THR:O	2.39	0.55
1:D:816:SER:HB2	1:D:843:ASN:HB2	1.88	0.55
1:K:678:LYS:O	1:K:682:LYS:HG2	2.06	0.55
1:N:200:VAL:HG12	1:N:244:LEU:HB3	1.87	0.55
1:B:98:LEU:HD13	1:B:235:LEU:HD11	1.88	0.55
1:B:797:HIS:CD2	1:B:826:LYS:HB2	2.41	0.55
1:F:851:SER:HA	1:F:881:LEU:HA	1.89	0.55
1:K:720:GLU:HA	1:K:744:HIS:HB2	1.89	0.55
1:K:830:CYS:O	1:K:858:ASN:ND2	2.36	0.55

Continued on next page...

Continued from previous page...

Atom-1	Atom-2	Interatomic distance (Å)	Clash overlap (Å)
1:P:421:LEU:HB2	1:P:427:LEU:HD12	1.88	0.55
1:F:192:ARG:O	1:F:195:LYS:HG2	2.07	0.55
1:L:588:SER:HB2	1:L:645:PRO:HG2	1.89	0.55
1:N:977:PHE:N	1:N:977:PHE:CD1	2.75	0.55
1:K:175:LYS:N	2:K:1101:ADP:O3B	2.40	0.55
1:P:983:LEU:O	1:P:986:LYS:CB	2.54	0.55
1:B:620:ALA:HB1	1:B:680:LEU:HD11	1.89	0.55
1:B:914:LEU:HB3	1:B:917:TRP:CG	2.42	0.55
1:H:681:GLY:O	1:H:685:SER:OG	2.25	0.55
1:K:621:THR:HG21	1:K:679:TYR:HD2	1.72	0.55
1:K:914:LEU:HB3	1:K:917:TRP:CG	2.41	0.55
1:L:169:GLY:O	1:L:280:THR:HA	2.08	0.54
1:N:418:GLU:OE2	1:N:418:GLU:N	2.40	0.54
1:N:824:GLU:HA	1:N:852:ILE:HB	1.89	0.54
1:F:588:SER:OG	1:F:615:ASP:O	2.18	0.54
1:H:889:CYS:O	1:H:892:VAL:HG22	2.08	0.54
1:F:308:LEU:O	1:F:312:VAL:HG22	2.08	0.54
1:F:872:ILE:HA	1:F:875:LEU:HG	1.88	0.54
1:H:421:LEU:HB2	1:H:427:LEU:HD12	1.90	0.54
1:H:918:ARG:HB3	1:H:948:CYS:SG	2.47	0.54
1:L:896:LEU:HD12	1:L:923:GLU:HB3	1.88	0.54
1:L:970:PHE:HE2	1:L:997:LEU:HD21	1.73	0.54
1:P:665:THR:HB	1:P:693:HIS:HB3	1.90	0.54
1:L:816:SER:HB2	1:L:843:ASN:HB2	1.90	0.54
1:K:889:CYS:O	1:K:892:VAL:HG22	2.08	0.54
1:P:851:SER:HA	1:P:881:LEU:HA	1.88	0.54
1:H:816:SER:HB2	1:H:843:ASN:HB2	1.90	0.54
1:B:548:ALA:O	1:B:552:ASN:ND2	2.41	0.53
1:D:776:ASN:H	1:D:779:ASP:HB2	1.73	0.53
1:N:535:GLN:O	1:N:539:ASN:HB2	2.09	0.53
1:B:552:ASN:ND2	1:B:583:SER:OG	2.41	0.53
1:D:463:GLU:HG3	1:F:774:ARG:NH2	2.23	0.53
1:P:666:LEU:HB3	1:P:669:ILE:HD12	1.89	0.53
1:P:769:ILE:HG12	1:P:797:HIS:HB2	1.90	0.53
1:N:351:ARG:HG2	1:N:369:LEU:HD11	1.89	0.53
1:D:984:VAL:HG13	1:D:1015:ILE:HD11	1.90	0.53
1:D:198:ARG:N	1:D:242:GLU:O	2.41	0.53
1:H:991:LEU:HD12	1:H:1019:PHE:CZ	2.44	0.53
1:K:892:VAL:HG21	1:K:917:TRP:HA	1.91	0.53
1:P:198:ARG:N	1:P:242:GLU:O	2.41	0.53
1:P:406:PHE:CZ	1:P:444:LYS:HE3	2.44	0.53

Continued on next page...

Continued from previous page...

Atom-1	Atom-2	Interatomic distance (Å)	Clash overlap (Å)
1:N:420:VAL:O	1:N:424:ILE:HG13	2.08	0.53
1:N:981:ALA:O	1:N:984:VAL:N	2.42	0.53
1:D:595:LEU:HD12	1:D:651:LEU:HD11	1.91	0.53
1:F:677:ILE:HG23	1:F:707:VAL:HA	1.90	0.53
1:H:830:CYS:O	1:H:858:ASN:ND2	2.38	0.53
1:H:962:GLU:HG3	1:H:990:VAL:HG13	1.90	0.53
1:N:997:LEU:O	1:N:1019:PHE:HB3	2.08	0.53
1:N:941:GLN:HA	1:N:967:LEU:HD11	1.91	0.53
1:B:547:LYS:O	1:B:551:VAL:HG23	2.09	0.53
1:B:910:ALA:O	1:B:940:GLN:N	2.35	0.53
1:H:228:SER:OG	1:H:231:THR:OG1	2.24	0.53
1:L:538:ARG:HD3	1:L:691:ARG:HD3	1.90	0.53
1:N:421:LEU:HB2	1:N:427:LEU:HD12	1.91	0.53
1:N:656:LYS:C	1:N:657:GLN:HE21	2.12	0.53
1:B:816:SER:HB2	1:B:843:ASN:CB	2.39	0.53
1:H:321:LEU:O	1:H:325:ILE:HG12	2.09	0.53
1:P:173:LYS:HE3	1:P:299:ASP:HA	1.90	0.53
1:K:300:MET:N	1:K:336:LYS:O	2.36	0.53
1:L:108:LEU:O	1:L:111:SER:OG	2.26	0.53
1:H:209:ARG:NH1	1:L:218:ASP:OD1	2.33	0.53
1:N:108:LEU:O	1:N:111:SER:OG	2.27	0.53
1:H:443:HIS:ND1	1:H:445:SER:OG	2.41	0.53
1:N:321:LEU:O	1:N:325:ILE:HG13	2.09	0.53
1:B:673:ASN:H	1:B:676:ASP:HB2	1.74	0.52
1:D:845:HIS:HA	1:D:877:VAL:HG11	1.91	0.52
1:H:145:ARG:HE	1:H:667:ARG:NH2	2.07	0.52
1:P:690:LEU:HD22	1:P:714:MET:HG3	1.89	0.52
1:B:936:LEU:HB3	1:B:939:LEU:HB2	1.90	0.52
1:D:1019:PHE:HE2	1:D:1021:LEU:HD13	1.74	0.52
1:L:865:ASN:OD1	1:L:895:SER:OG	2.27	0.52
1:F:351:ARG:O	1:F:352:GLN:HB2	2.09	0.52
1:N:588:SER:OG	1:N:615:ASP:O	2.26	0.52
1:P:824:GLU:HG2	1:P:852:ILE:HB	1.92	0.52
1:H:333:ASN:HA	1:H:336:LYS:HZ2	1.73	0.52
1:K:674:LYS:O	1:K:678:LYS:HG2	2.10	0.52
1:K:910:ALA:O	1:K:940:GLN:N	2.34	0.52
1:L:493:TYR:O	1:L:497:SER:OG	2.25	0.52
1:P:108:LEU:O	1:P:111:SER:OG	2.27	0.52
1:P:351:ARG:HD3	1:P:354:PHE:HB3	1.91	0.52
1:D:716:THR:HG23	1:D:740:ASN:HB2	1.92	0.52
1:K:987:LEU:HD22	1:K:1015:ILE:HD12	1.92	0.52

Continued on next page...

Continued from previous page...

Atom-1	Atom-2	Interatomic distance (Å)	Clash overlap (Å)
1:L:889:CYS:O	1:L:892:VAL:HG22	2.10	0.52
1:N:335:MET:HE3	1:N:341:VAL:HA	1.91	0.52
1:D:604:ASN:N	1:D:604:ASN:OD1	2.43	0.52
1:F:1015:ILE:HG23	1:F:1021:LEU:HD11	1.91	0.52
1:F:970:PHE:HE2	1:F:997:LEU:HD21	1.75	0.52
1:H:588:SER:HB2	1:H:645:PRO:HD2	1.91	0.52
1:H:787:LEU:HD13	1:H:815:LEU:HD21	1.91	0.52
1:N:345:CYS:O	1:N:349:MET:HG3	2.10	0.52
1:B:749:GLN:HG2	1:B:774:ARG:NH2	2.24	0.52
1:D:325:ILE:HG12	1:D:331:LEU:HD23	1.90	0.52
1:F:988:SER:OG	1:F:1014:ALA:O	2.28	0.52
1:L:499:THR:HG23	1:L:571:LEU:HD21	1.92	0.52
1:L:578:PHE:O	1:L:582:LYS:NZ	2.28	0.52
1:N:977:PHE:N	1:N:977:PHE:HD1	2.06	0.52
1:P:857:GLU:HG3	1:P:915:LYS:HD3	1.90	0.52
1:F:406:PHE:CZ	1:F:444:LYS:HE3	2.44	0.52
1:H:812:VAL:HG11	1:H:840:LEU:HB2	1.91	0.52
1:H:1002:LEU:HD23	1:H:1007:PHE:CE2	2.44	0.52
1:L:443:HIS:ND1	1:L:445:SER:OG	2.42	0.52
1:L:914:LEU:HB3	1:L:917:TRP:CG	2.45	0.52
1:B:350:GLY:HA3	1:B:369:LEU:HD21	1.90	0.52
1:B:145:ARG:HA	1:B:523:VAL:HG22	1.90	0.52
1:B:749:GLN:HG2	1:B:774:ARG:CZ	2.40	0.52
1:F:855:ILE:HG13	1:F:887:PRO:HD3	1.92	0.52
1:F:889:CYS:O	1:F:892:VAL:HG22	2.10	0.52
1:F:921:ASP:OD1	1:F:950:SER:OG	2.28	0.52
1:L:143:ASP:HB2	1:L:149:VAL:HG23	1.92	0.52
1:L:228:SER:OG	1:L:231:THR:OG1	2.24	0.52
1:N:947:HIS:ND1	1:N:973:SER:O	2.42	0.52
1:P:299:ASP:HB3	1:P:336:LYS:HB3	1.92	0.52
1:D:986:LYS:O	1:D:990:VAL:HG23	2.10	0.51
1:F:875:LEU:HB2	1:F:902:GLN:HG2	1.91	0.51
1:H:228:SER:HG	1:H:231:THR:HG1	1.58	0.51
1:K:986:LYS:O	1:K:990:VAL:HG23	2.09	0.51
1:P:677:ILE:HG22	1:P:707:VAL:HG22	1.92	0.51
1:B:420:VAL:O	1:B:424:ILE:HG13	2.10	0.51
1:N:850:LEU:HD21	1:N:853:LEU:HD13	1.92	0.51
1:P:345:CYS:O	1:P:349:MET:HG3	2.11	0.51
1:P:361:MET:O	1:P:365:THR:OG1	2.23	0.51
1:H:142:LYS:HD2	1:H:168:GLU:OE2	2.11	0.51
1:D:586:ILE:HG12	1:D:595:LEU:HD11	1.93	0.51

Continued on next page...

Continued from previous page...

Atom-1	Atom-2	Interatomic distance (Å)	Clash overlap (Å)
1:H:284:LEU:HG	1:H:288:ARG:HG3	1.93	0.51
1:L:418:GLU:O	1:L:422:VAL:HG23	2.10	0.51
1:L:859:TYR:CE1	1:L:889:CYS:HA	2.45	0.51
1:N:859:TYR:CE1	1:N:889:CYS:HA	2.46	0.51
1:B:308:LEU:O	1:B:312:VAL:HG22	2.11	0.51
1:B:508:HIS:O	1:B:511:MET:HG2	2.11	0.51
1:B:788:ARG:NH1	1:B:817:GLU:OE2	2.44	0.51
1:D:681:GLY:O	1:D:685:SER:OG	2.28	0.51
1:K:854:ASP:OD2	1:K:856:SER:OG	2.22	0.51
1:B:312:VAL:O	1:H:132:LYS:NZ	2.44	0.51
1:B:604:ASN:N	1:B:604:ASN:OD1	2.44	0.51
1:D:406:PHE:CZ	1:D:444:LYS:HE3	2.45	0.51
1:L:97:ASP:HA	1:L:100:VAL:HG12	1.93	0.51
1:P:499:THR:HA	1:P:502:THR:HG22	1.93	0.51
1:P:696:ARG:HA	1:P:721:ALA:HB3	1.92	0.51
1:B:198:ARG:N	1:B:242:GLU:O	2.44	0.51
1:B:225:ASP:HB2	1:F:405:LYS:NZ	2.25	0.51
1:K:134:PHE:CZ	1:K:181:ARG:HG2	2.45	0.51
1:K:776:ASN:H	1:K:779:ASP:HB2	1.75	0.51
1:L:666:LEU:HB3	1:L:669:ILE:HD12	1.91	0.51
1:K:988:SER:OG	1:K:1014:ALA:O	2.29	0.51
1:K:1015:ILE:HG22	1:K:1021:LEU:HD11	1.93	0.51
1:L:308:LEU:O	1:L:312:VAL:HG22	2.10	0.51
1:L:518:LEU:HD23	1:L:546:LEU:HB2	1.92	0.51
1:P:131:GLU:HG3	1:P:184:MET:HE1	1.93	0.51
1:P:393:CYS:HB2	1:P:421:LEU:HD22	1.93	0.51
1:B:322:TRP:HA	1:B:325:ILE:HD12	1.93	0.50
1:K:334:LEU:HD13	1:K:362:LEU:HD22	1.92	0.50
1:N:285:ARG:NH1	1:N:484:THR:OG1	2.44	0.50
1:P:690:LEU:O	1:P:715:HIS:N	2.39	0.50
1:B:225:ASP:OD2	1:B:225:ASP:N	2.30	0.50
1:D:345:CYS:O	1:D:349:MET:HG3	2.11	0.50
1:H:480:ILE:HG12	1:H:515:HIS:HA	1.94	0.50
1:K:604:ASN:N	1:K:604:ASN:OD1	2.42	0.50
1:L:769:ILE:HG12	1:L:797:HIS:HB2	1.93	0.50
1:N:547:LYS:O	1:N:551:VAL:HG13	2.11	0.50
1:N:968:VAL:HG12	1:N:998:GLN:HB2	1.92	0.50
1:D:889:CYS:O	1:D:892:VAL:HG22	2.11	0.50
1:F:986:LYS:O	1:F:990:VAL:HG23	2.12	0.50
1:H:533:SEP:OG	1:H:534:ILE:N	2.41	0.50
1:P:135:THR:O	2:P:1101:ADP:N6	2.43	0.50

Continued on next page...

Continued from previous page...

Atom-1	Atom-2	Interatomic distance (Å)	Clash overlap (Å)
1:P:168:GLU:HB3	1:P:284:LEU:HD13	1.92	0.50
1:L:522:SER:O	1:L:523:VAL:O	2.30	0.50
1:N:914:LEU:HB3	1:N:917:TRP:CG	2.47	0.50
1:H:578:PHE:O	1:H:582:LYS:NZ	2.26	0.50
1:H:852:ILE:HG12	1:H:883:THR:HB	1.92	0.50
1:D:416:MET:HE3	1:N:420:VAL:HG22	1.92	0.50
1:D:756:ILE:HD11	1:D:779:ASP:HB3	1.92	0.50
1:D:940:GLN:O	1:D:968:VAL:N	2.34	0.50
1:H:568:LYS:HD3	1:H:601:TYR:CZ	2.46	0.50
1:K:535:GLN:O	1:K:539:ASN:HB2	2.11	0.50
1:K:903:LEU:HD21	1:K:909:LEU:HD12	1.93	0.50
1:L:986:LYS:O	1:L:990:VAL:HG23	2.12	0.50
1:B:206:ARG:HG2	1:B:207:SER:N	2.26	0.50
1:D:108:LEU:O	1:D:111:SER:OG	2.29	0.50
1:D:266:LYS:HG3	1:D:290:VAL:HG21	1.94	0.50
1:D:474:LEU:HD23	1:D:477:MET:HE3	1.94	0.50
1:K:862:LYS:NZ	1:F:574:GLU:OE2	2.35	0.50
1:F:911:LYS:HG2	1:F:941:GLN:HG2	1.94	0.50
1:N:582:LYS:O	1:N:610:ASP:N	2.44	0.50
1:N:672:LEU:HB2	1:N:699:ALA:HB1	1.92	0.50
1:P:661:THR:HG23	1:P:689:ASN:HB3	1.94	0.50
1:D:228:SER:OG	1:D:231:THR:OG1	2.26	0.50
1:H:503:ARG:HG3	1:H:571:LEU:HD11	1.94	0.50
1:L:146:HIS:CE1	1:L:288:ARG:HE	2.29	0.50
1:P:420:VAL:O	1:P:424:ILE:HG13	2.12	0.50
1:B:1003:THR:HG23	1:B:1024:ALA:HA	1.93	0.50
1:D:663:GLU:OE2	1:D:691:ARG:NH1	2.44	0.50
1:K:816:SER:HA	1:K:847:LEU:HD21	1.93	0.50
1:N:974:THR:C	1:N:975:GLU:OE2	2.51	0.50
1:P:103:GLN:OE1	1:P:103:GLN:HA	2.10	0.50
1:D:599:PHE:CD1	1:D:651:LEU:HD22	2.47	0.49
1:D:824:GLU:HG2	1:D:852:ILE:HB	1.93	0.49
1:F:925:LYS:O	1:F:929:GLU:HG3	2.12	0.49
1:H:269:HIS:NE2	1:H:1017:GLY:HA2	2.27	0.49
1:H:547:LYS:O	1:H:551:VAL:HG12	2.12	0.49
1:N:970:PHE:HE2	1:N:997:LEU:HD21	1.76	0.49
1:P:893:HIS:HB2	1:P:923:GLU:HG2	1.92	0.49
1:P:923:GLU:N	1:P:923:GLU:OE1	2.45	0.49
1:B:406:PHE:CZ	1:B:444:LYS:HE3	2.47	0.49
1:B:474:LEU:HD23	1:B:477:MET:HE3	1.94	0.49
1:D:515:HIS:NE2	1:D:547:LYS:HD2	2.27	0.49

Continued on next page...

Continued from previous page...

Atom-1	Atom-2	Interatomic distance (Å)	Clash overlap (Å)
1:F:769:ILE:HG12	1:F:797:HIS:HB2	1.94	0.49
1:H:418:GLU:O	1:H:422:VAL:HG23	2.12	0.49
1:H:776:ASN:H	1:H:779:ASP:HB2	1.77	0.49
1:K:799:THR:HG22	1:K:828:VAL:HG22	1.94	0.49
1:L:811:ILE:O	1:L:815:LEU:HG	2.12	0.49
1:P:355:GLN:HG2	1:P:357:HIS:CE1	2.48	0.49
1:D:661:THR:HG23	1:D:689:ASN:HB3	1.93	0.49
1:L:621:THR:HG1	1:L:645:PRO:N	2.10	0.49
1:N:306:LYS:HD2	1:N:322:TRP:CE2	2.48	0.49
1:P:335:MET:HE3	1:P:341:VAL:HA	1.94	0.49
1:D:1006:GLU:O	1:D:1007:PHE:HB2	2.13	0.49
1:F:492:LEU:HG	1:F:564:GLU:HG3	1.93	0.49
1:H:518:LEU:HD21	1:H:547:LYS:HG2	1.93	0.49
1:K:335:MET:HG3	1:K:341:VAL:HG22	1.93	0.49
1:K:552:ASN:ND2	1:K:585:TYR:HB2	2.28	0.49
1:N:474:LEU:HD23	1:N:477:MET:HE3	1.93	0.49
1:P:868:LEU:HD11	1:P:886:LEU:HG	1.95	0.49
1:D:743:ILE:HG21	1:D:746:LEU:HD22	1.93	0.49
1:F:393:CYS:HB2	1:F:421:LEU:HD22	1.93	0.49
1:H:333:ASN:OD1	1:H:336:LYS:NZ	2.37	0.49
1:H:474:LEU:HD23	1:H:477:MET:HE3	1.94	0.49
1:H:859:TYR:CE1	1:H:889:CYS:HA	2.47	0.49
1:B:752:PRO:HA	1:B:757:ASP:OD1	2.13	0.49
1:F:672:LEU:HD12	1:F:677:ILE:HG13	1.94	0.49
1:H:984:VAL:HG22	1:H:1007:PHE:HE1	1.78	0.49
1:H:471:ASN:O	1:H:475:ASN:HB2	2.12	0.49
1:K:900:LEU:HG	1:K:930:PHE:CG	2.48	0.49
1:N:653:PHE:HE2	1:N:679:TYR:CD1	2.30	0.49
1:B:174:GLY:N	2:B:1101:ADP:O2B	2.44	0.49
1:D:324:GLN:NE2	1:D:354:PHE:O	2.46	0.49
1:D:886:LEU:HD12	1:D:917:TRP:HZ2	1.77	0.49
1:H:335:MET:HE3	1:H:341:VAL:HA	1.94	0.49
1:K:673:ASN:O	1:K:677:ILE:HG13	2.12	0.49
1:P:698:ALA:HA	1:P:723:PRO:HD3	1.94	0.49
1:B:340:PHE:O	1:B:344:THR:HG22	2.11	0.49
1:B:430:TYR:HD2	1:B:438:THR:HB	1.78	0.49
1:F:405:LYS:HE3	1:F:407:ASP:O	2.13	0.49
1:H:334:LEU:HD13	1:H:362:LEU:HD22	1.95	0.49
1:H:604:ASN:N	1:H:604:ASN:OD1	2.46	0.49
1:L:420:VAL:O	1:L:424:ILE:HG13	2.12	0.49
1:P:750:GLN:HG3	1:P:756:ILE:HD11	1.95	0.49

Continued on next page...

Continued from previous page...

Atom-1	Atom-2	Interatomic distance (Å)	Clash overlap (Å)
1:P:916:ASN:HA	1:P:946:GLY:HA3	1.94	0.49
1:B:665:THR:HG23	1:B:693:HIS:HB3	1.95	0.49
1:H:715:HIS:CE1	1:H:739:GLN:HE21	2.30	0.49
1:N:480:ILE:HD12	1:N:554:PHE:HB2	1.93	0.49
1:P:169:GLY:O	1:P:280:THR:HA	2.13	0.49
1:P:910:ALA:O	1:P:940:GLN:N	2.35	0.49
1:B:267:GLU:OE1	1:B:270:ARG:NH1	2.46	0.48
1:B:691:ARG:HG2	1:B:715:HIS:HB3	1.95	0.48
1:N:788:ARG:NH2	1:N:817:GLU:OE1	2.45	0.48
1:B:529:TRP:HA	1:B:529:TRP:CE3	2.47	0.48
1:D:145:ARG:HA	1:D:523:VAL:HG22	1.94	0.48
1:D:235:LEU:HD23	1:D:239:LEU:HD23	1.95	0.48
1:D:932:GLU:HG3	1:D:960:VAL:HG13	1.95	0.48
1:D:98:LEU:HD11	1:D:239:LEU:HD21	1.94	0.48
1:H:535:GLN:O	1:H:539:ASN:HB2	2.13	0.48
1:K:547:LYS:O	1:K:551:VAL:HG23	2.12	0.48
1:L:900:LEU:O	1:L:904:GLU:HG3	2.13	0.48
1:F:825:MET:HG2	1:F:827:LEU:HD13	1.96	0.48
1:H:788:ARG:HG3	1:H:788:ARG:HH21	1.78	0.48
1:K:385:ASP:HB3	1:K:388:ARG:HB2	1.94	0.48
1:L:464:PRO:HA	1:L:467:VAL:HG12	1.94	0.48
1:B:96:GLU:O	1:B:100:VAL:HG13	2.13	0.48
1:K:339:LEU:O	1:K:343:ILE:HG13	2.14	0.48
1:L:588:SER:OG	1:L:615:ASP:O	2.23	0.48
1:N:918:ARG:O	1:N:920:ARG:NH1	2.47	0.48
1:N:940:GLN:O	1:N:941:GLN:HB3	2.14	0.48
1:P:306:LYS:HD2	1:P:322:TRP:CE2	2.48	0.48
1:L:92:GLN:O	1:L:93:VAL:HG13	2.14	0.48
1:F:97:ASP:HA	1:F:100:VAL:HG12	1.96	0.48
1:K:306:LYS:HD3	1:K:322:TRP:CE2	2.49	0.48
1:K:893:HIS:HB2	1:K:923:GLU:HG2	1.95	0.48
1:N:599:PHE:HB3	1:N:657:GLN:OE1	2.13	0.48
1:N:690:LEU:HD23	1:N:714:MET:SD	2.53	0.48
1:N:888:TRP:HA	1:N:892:VAL:HG11	1.94	0.48
1:N:918:ARG:HB3	1:N:918:ARG:HE	1.38	0.48
1:P:571:LEU:HD22	1:P:574:GLU:HG3	1.96	0.48
1:P:676:ASP:O	1:P:680:LEU:HD13	2.14	0.48
1:P:893:HIS:CD2	1:P:918:ARG:HB2	2.49	0.48
1:F:166:LEU:HD22	1:F:287:ILE:HD12	1.96	0.48
1:F:562:PHE:O	1:F:565:SER:OG	2.27	0.48
1:H:420:VAL:O	1:H:424:ILE:HG13	2.14	0.48

Continued on next page...

Continued from previous page...

Atom-1	Atom-2	Interatomic distance (Å)	Clash overlap (Å)
1:K:888:TRP:HA	1:K:892:VAL:HG11	1.95	0.48
1:L:198:ARG:N	1:L:242:GLU:O	2.46	0.48
1:P:163:SER:HB2	1:P:274:MET:CE	2.44	0.48
1:B:533:SEP:OG	1:B:534:ILE:N	2.47	0.48
1:F:889:CYS:SG	1:F:892:VAL:HG13	2.53	0.48
1:K:525:LYS:HE3	1:K:525:LYS:HB2	1.46	0.48
1:F:663:GLU:HG3	1:F:691:ARG:HB2	1.95	0.48
1:K:1002:LEU:O	1:K:1023:THR:HA	2.13	0.48
1:L:285:ARG:O	1:L:520:GLY:HA3	2.13	0.48
1:N:860:LEU:HB2	1:N:864:GLY:HA3	1.95	0.48
1:D:889:CYS:SG	1:D:892:VAL:HG13	2.54	0.48
1:F:360:THR:OG1	1:F:564:GLU:OE1	2.20	0.48
1:N:967:LEU:HD11	1:N:969:PHE:O	2.13	0.48
1:B:925:LYS:HA	1:B:956:TYR:CE2	2.46	0.47
1:H:645:PRO:O	1:H:649:VAL:HG23	2.14	0.47
1:K:665:THR:HG23	1:K:693:HIS:HB3	1.95	0.47
1:L:421:LEU:HB2	1:L:427:LEU:HD12	1.95	0.47
1:L:925:LYS:HB2	1:L:925:LYS:HE2	1.71	0.47
1:F:852:ILE:HG12	1:F:883:THR:HB	1.95	0.47
1:H:412:HIS:HE1	1:H:436:LYS:HG2	1.79	0.47
1:K:205:LEU:HB2	1:K:248:ASP:O	2.13	0.47
1:K:828:VAL:C	1:K:830:CYS:H	2.16	0.47
1:N:593:ASP:OD1	1:N:647:ARG:NH2	2.42	0.47
1:N:851:SER:HA	1:N:881:LEU:HA	1.97	0.47
1:P:93:VAL:HG11	1:P:235:LEU:HD13	1.96	0.47
1:P:479:SER:O	1:P:483:ILE:HG13	2.14	0.47
1:B:967:LEU:O	1:B:997:LEU:HD12	2.14	0.47
1:D:886:LEU:HD12	1:D:917:TRP:CZ2	2.50	0.47
1:F:666:LEU:HB3	1:F:669:ILE:HD12	1.97	0.47
1:H:360:THR:OG1	1:H:564:GLU:OE1	2.25	0.47
1:L:406:PHE:CZ	1:L:444:LYS:HE3	2.49	0.47
1:L:745:ARG:HA	1:L:772:ASP:HB3	1.95	0.47
1:L:824:GLU:HG2	1:L:852:ILE:HD12	1.96	0.47
1:P:888:TRP:HA	1:P:892:VAL:HG11	1.96	0.47
1:P:955:LEU:HD12	1:P:983:LEU:CA	2.43	0.47
1:F:240:HIS:CE1	1:F:241:LYS:HG3	2.49	0.47
1:H:168:GLU:HB3	1:H:284:LEU:HD13	1.96	0.47
1:L:306:LYS:HD2	1:L:322:TRP:CE2	2.48	0.47
1:L:924:ILE:HA	1:L:924:ILE:HD13	1.67	0.47
1:D:827:LEU:HD23	1:D:832:LEU:HD11	1.97	0.47
1:H:947:HIS:HD2	1:H:949:VAL:HB	1.80	0.47

Continued on next page...

Continued from previous page...

Atom-1	Atom-2	Interatomic distance (Å)	Clash overlap (Å)
1:N:740:ASN:HD22	1:N:767:ARG:HB2	1.79	0.47
1:D:461:SER:O	1:F:802:SER:OG	2.33	0.47
1:H:571:LEU:O	1:H:574:GLU:HG2	2.15	0.47
1:H:851:SER:HA	1:H:881:LEU:HA	1.95	0.47
1:B:889:CYS:SG	1:B:892:VAL:HG13	2.55	0.47
1:D:306:LYS:HD2	1:D:322:TRP:CD2	2.50	0.47
1:H:1003:THR:HG22	1:H:1024:ALA:HB3	1.96	0.47
1:H:901:LYS:HA	1:H:901:LYS:HD3	1.67	0.47
1:L:509:LEU:O	1:L:512:VAL:HG22	2.15	0.47
1:N:898:LYS:HB3	1:N:898:LYS:HE3	1.74	0.47
1:P:321:LEU:O	1:P:325:ILE:HG13	2.14	0.47
1:P:663:GLU:HG3	1:P:691:ARG:HB2	1.95	0.47
1:K:962:GLU:HG3	1:K:990:VAL:HG22	1.96	0.47
1:N:739:GLN:O	1:N:740:ASN:ND2	2.47	0.47
1:B:224:PRO:HB2	1:B:227:ILE:HG13	1.95	0.47
1:D:288:ARG:NH1	1:D:520:GLY:O	2.48	0.47
1:D:664:VAL:HG22	1:D:692:LEU:HD23	1.97	0.47
1:F:746:LEU:HD12	1:F:746:LEU:HA	1.76	0.47
1:H:205:LEU:HB3	1:H:253:PHE:HB2	1.96	0.47
1:N:759:LEU:HD12	1:N:759:LEU:HA	1.68	0.47
1:P:914:LEU:HD12	1:P:917:TRP:CZ2	2.50	0.47
1:B:93:VAL:HG22	1:B:231:THR:HG23	1.97	0.47
1:F:420:VAL:O	1:F:424:ILE:HG13	2.14	0.47
1:F:532:GLU:HG3	1:F:718:MET:HE1	1.97	0.47
1:L:499:THR:HA	1:L:502:THR:HG22	1.97	0.47
1:N:139:MET:HB2	1:N:152:LEU:HB2	1.96	0.47
1:N:145:ARG:HD2	1:N:667:ARG:CZ	2.45	0.47
1:N:664:VAL:HG22	1:N:692:LEU:HD23	1.96	0.47
1:P:324:GLN:NE2	1:P:354:PHE:H	2.09	0.47
1:D:214:GLU:N	1:D:214:GLU:OE1	2.46	0.47
1:L:479:SER:O	1:L:483:ILE:HG13	2.15	0.47
1:L:824:GLU:HG2	1:L:852:ILE:HB	1.97	0.47
1:N:269:HIS:CD2	1:N:1017:GLY:HA2	2.51	0.47
1:F:770:LEU:HB2	1:F:798:LEU:HD23	1.96	0.46
1:H:401:VAL:HG11	1:H:490:LEU:HD22	1.96	0.46
1:K:533:SEP:O1P	1:K:613:LYS:NZ	2.35	0.46
1:N:418:GLU:O	1:N:422:VAL:HG23	2.15	0.46
1:P:701:ALA:HB2	1:P:723:PRO:HG2	1.95	0.46
1:P:744:HIS:ND1	1:P:771:ASP:OD2	2.42	0.46
1:B:666:LEU:HB3	1:B:669:ILE:HD12	1.95	0.46
1:B:826:LYS:HG2	1:B:854:ASP:HB3	1.97	0.46

Continued on next page...

Continued from previous page...

Atom-1	Atom-2	Interatomic distance (Å)	Clash overlap (Å)
1:D:330:CYS:HB3	1:D:357:HIS:O	2.15	0.46
1:L:161:LEU:HD11	1:L:276:ILE:HD11	1.98	0.46
1:L:321:LEU:O	1:L:325:ILE:HG13	2.14	0.46
1:L:145:ARG:HG2	1:L:523:VAL:HB	1.96	0.46
1:N:655:TRP:HB2	1:N:657:GLN:HE22	1.80	0.46
1:P:931:LEU:HD23	1:P:931:LEU:HA	1.83	0.46
1:F:493:TYR:O	1:F:497:SER:OG	2.30	0.46
1:F:923:GLU:OE1	1:F:923:GLU:N	2.49	0.46
1:H:104:ASN:HB3	1:H:222:ASN:HB2	1.97	0.46
1:H:889:CYS:SG	1:H:892:VAL:HG13	2.54	0.46
1:H:954:TRP:O	1:H:958:MET:HG2	2.15	0.46
1:K:552:ASN:HD22	1:K:585:TYR:HB2	1.79	0.46
1:K:923:GLU:N	1:K:923:GLU:OE1	2.49	0.46
1:L:145:ARG:CG	1:L:523:VAL:HB	2.45	0.46
1:L:571:LEU:O	1:L:574:GLU:HG2	2.14	0.46
1:N:181:ARG:O	1:N:184:MET:HG3	2.15	0.46
1:P:694:ILE:HG21	1:P:700:MET:HG2	1.97	0.46
1:P:670:ASN:O	1:P:699:ALA:HB2	2.15	0.46
1:P:708:LEU:O	1:P:731:TYR:OH	2.33	0.46
1:B:532:GLU:H	1:B:536:SER:CB	2.29	0.46
1:B:538:ARG:HD3	1:B:716:THR:HG21	1.97	0.46
1:D:347:ILE:O	1:D:351:ARG:HB2	2.16	0.46
1:F:471:ASN:O	1:F:475:ASN:ND2	2.34	0.46
1:F:990:VAL:O	1:F:994:LEU:HG	2.16	0.46
1:K:142:LYS:HD2	1:K:168:GLU:OE2	2.15	0.46
1:K:267:GLU:OE1	1:K:270:ARG:NH1	2.48	0.46
1:K:365:THR:O	1:K:369:LEU:HB2	2.16	0.46
1:K:285:ARG:O	1:K:520:GLY:HA3	2.15	0.46
1:K:145:ARG:HA	1:K:523:VAL:HG22	1.98	0.46
1:L:664:VAL:HG22	1:L:692:LEU:HD23	1.97	0.46
1:B:860:LEU:HD11	1:B:887:PRO:HG2	1.97	0.46
1:B:954:TRP:O	1:B:958:MET:HG2	2.16	0.46
1:K:406:PHE:CZ	1:K:444:LYS:HE3	2.51	0.46
1:L:991:LEU:HD23	1:L:1019:PHE:HZ	1.80	0.46
1:L:690:LEU:HD23	1:L:714:MET:HG3	1.98	0.46
1:N:568:LYS:HD3	1:N:601:TYR:CZ	2.51	0.46
1:B:932:GLU:HG3	1:B:960:VAL:HG13	1.96	0.46
1:D:421:LEU:HB2	1:D:427:LEU:HD12	1.98	0.46
1:F:367:TYR:O	1:F:371:ILE:HG12	2.15	0.46
1:K:666:LEU:HB3	1:K:669:ILE:HD12	1.97	0.46
1:K:743:ILE:HD13	1:K:746:LEU:HD22	1.98	0.46

Continued on next page...

Continued from previous page...

Atom-1	Atom-2	Interatomic distance (Å)	Clash overlap (Å)
1:K:914:LEU:HB3	1:K:917:TRP:CD2	2.51	0.46
1:L:743:ILE:HD12	1:L:746:LEU:HD22	1.96	0.46
1:P:552:ASN:OD1	1:P:583:SER:OG	2.33	0.46
1:P:974:THR:HG23	1:P:975:GLU:N	2.30	0.46
1:D:285:ARG:NH1	1:D:517:SER:O	2.49	0.46
1:F:816:SER:HB2	1:F:843:ASN:HB2	1.96	0.46
1:H:406:PHE:CZ	1:H:444:LYS:HE3	2.51	0.46
1:N:911:LYS:HG2	1:N:941:GLN:HG2	1.96	0.46
1:D:823:GLN:HA	1:D:850:LEU:HA	1.97	0.46
1:D:872:ILE:O	1:D:902:GLN:HG3	2.15	0.46
1:F:787:LEU:HD13	1:F:815:LEU:HD21	1.97	0.46
1:B:132:LYS:NZ	1:H:312:VAL:O	2.49	0.46
1:H:990:VAL:O	1:H:994:LEU:HG	2.16	0.46
1:H:175:LYS:O	1:H:178:LEU:HB3	2.15	0.46
1:H:716:THR:CG2	1:H:740:ASN:HD22	2.28	0.46
1:L:168:GLU:HA	1:L:279:THR:O	2.16	0.46
1:L:955:LEU:HD13	1:L:983:LEU:HA	1.98	0.46
1:N:173:LYS:HA	1:N:173:LYS:HD3	1.76	0.46
1:P:166:LEU:HD22	1:P:287:ILE:HD12	1.98	0.46
1:F:284:LEU:HG	1:F:288:ARG:HG3	1.96	0.46
1:N:970:PHE:CZ	1:N:1000:VAL:HG13	2.50	0.46
1:P:378:TYR:HD1	1:P:386:PHE:HD1	1.63	0.46
1:B:108:LEU:O	1:B:111:SER:OG	2.33	0.45
1:F:645:PRO:HA	1:F:646:PRO:HD3	1.87	0.45
1:K:588:SER:HB2	1:K:645:PRO:HD2	1.97	0.45
1:L:911:LYS:HG2	1:L:941:GLN:HG2	1.98	0.45
1:N:456:SER:OG	1:N:498:SER:HB3	2.16	0.45
1:N:595:LEU:HA	1:N:595:LEU:HD13	1.76	0.45
1:N:511:MET:HG2	1:P:891:ASP:OD2	2.16	0.45
1:B:730:GLN:HG2	1:B:753:GLY:O	2.16	0.45
1:H:206:ARG:NH2	1:H:406:PHE:O	2.48	0.45
1:H:359:GLN:NE2	1:H:493:TYR:OH	2.42	0.45
1:H:557:CYS:O	1:H:561:LEU:HD13	2.16	0.45
1:K:288:ARG:HH11	1:K:288:ARG:HG2	1.81	0.45
1:K:164:PRO:HG2	1:K:290:VAL:CG1	2.46	0.45
1:K:991:LEU:HD23	1:K:1019:PHE:HZ	1.81	0.45
1:L:518:LEU:HD21	1:L:547:LYS:HG2	1.99	0.45
1:P:355:GLN:HG2	1:P:357:HIS:HE1	1.81	0.45
1:P:496:GLY:HA2	1:P:564:GLU:O	2.16	0.45
1:B:526:ARG:C	1:B:526:ARG:HD2	2.35	0.45
1:D:900:LEU:O	1:D:904:GLU:HG3	2.16	0.45

Continued on next page...

Continued from previous page...

Atom-1	Atom-2	Interatomic distance (Å)	Clash overlap (Å)
1:L:284:LEU:HG	1:L:288:ARG:HG3	1.98	0.45
1:L:649:VAL:O	1:L:653:PHE:HB2	2.17	0.45
1:P:502:THR:HG21	1:P:565:SER:HB2	1.97	0.45
1:D:343:ILE:O	1:D:347:ILE:HG13	2.16	0.45
1:D:752:PRO:HA	1:D:757:ASP:OD1	2.17	0.45
1:F:145:ARG:CZ	1:F:523:VAL:HG21	2.47	0.45
1:L:333:ASN:ND2	1:L:593:ASP:OD1	2.46	0.45
1:N:910:ALA:O	1:N:940:GLN:N	2.45	0.45
1:P:267:GLU:HB3	1:P:269:HIS:CE1	2.52	0.45
1:P:855:ILE:HG13	1:P:887:PRO:HD3	1.98	0.45
1:D:371:ILE:HD12	1:D:426:LEU:HD21	1.98	0.45
1:D:816:SER:HB2	1:D:843:ASN:CB	2.46	0.45
1:F:240:HIS:CG	1:F:241:LYS:H	2.34	0.45
1:F:335:MET:HG3	1:F:341:VAL:HG22	1.98	0.45
1:F:924:ILE:HD12	1:F:924:ILE:HA	1.69	0.45
1:F:978:LEU:HD22	1:F:1006:GLU:HB2	1.99	0.45
1:H:141:LYS:HB2	1:H:152:LEU:HD11	1.99	0.45
1:H:337:THR:HA	1:H:338:PRO:HD3	1.76	0.45
1:K:443:HIS:ND1	1:K:445:SER:OG	2.48	0.45
1:K:578:PHE:O	1:K:582:LYS:NZ	2.32	0.45
1:K:889:CYS:SG	1:K:892:VAL:HG13	2.57	0.45
1:N:285:ARG:O	1:N:520:GLY:HA3	2.15	0.45
1:B:764:ASN:HA	1:B:792:LYS:HD2	1.97	0.45
1:D:977:PHE:N	1:D:1004:GLY:O	2.47	0.45
1:F:764:ASN:HA	1:F:792:LYS:HD3	1.97	0.45
1:K:804:ILE:HG13	1:K:804:ILE:O	2.17	0.45
1:N:343:ILE:O	1:N:347:ILE:HG13	2.16	0.45
1:N:788:ARG:HG3	1:N:814:SER:HB3	1.99	0.45
1:B:493:TYR:O	1:B:497:SER:OG	2.34	0.45
1:B:499:THR:HA	1:B:502:THR:HG23	1.98	0.45
1:B:572:SER:HB2	1:B:604:ASN:HD21	1.81	0.45
1:B:855:ILE:HG13	1:B:887:PRO:HD3	1.99	0.45
1:D:173:LYS:HA	1:D:173:LYS:HD3	1.75	0.45
1:D:436:LYS:HE2	1:D:436:LYS:HB3	1.68	0.45
1:D:591:ILE:O	1:D:647:ARG:NH2	2.45	0.45
1:F:865:ASN:OD1	1:F:895:SER:OG	2.34	0.45
1:F:969:PHE:CZ	1:F:971:ASP:HB2	2.52	0.45
1:H:145:ARG:NH1	1:H:615:ASP:OD1	2.49	0.45
1:H:393:CYS:HB2	1:H:421:LEU:HD22	1.98	0.45
1:K:313:LEU:HA	1:K:313:LEU:HD12	1.87	0.45
1:L:675:GLN:HG2	1:L:679:TYR:CE2	2.52	0.45

Continued on next page...

Continued from previous page...

Atom-1	Atom-2	Interatomic distance (Å)	Clash overlap (Å)
1:L:889:CYS:SG	1:L:892:VAL:HG13	2.57	0.45
1:L:896:LEU:HD22	1:L:900:LEU:HD22	1.98	0.45
1:N:753:GLY:HA3	1:N:754:GLY:HA3	1.78	0.45
1:P:115:LEU:HA	1:P:130:LEU:HD22	1.98	0.45
1:P:360:THR:OG1	1:P:564:GLU:OE1	2.23	0.45
1:D:205:LEU:HD12	1:D:253:PHE:CG	2.52	0.45
1:B:435:LEU:HD23	1:F:433:GLN:O	2.16	0.45
1:K:140:TRP:O	1:K:295:ALA:HA	2.17	0.45
1:K:420:VAL:O	1:K:424:ILE:HG13	2.17	0.45
1:L:440:LYS:HG2	1:L:441:PHE:O	2.17	0.45
1:N:378:TYR:HD2	1:N:386:PHE:HD1	1.65	0.45
1:P:285:ARG:O	1:P:520:GLY:HA3	2.17	0.45
1:B:418:GLU:HB2	1:B:439:TYR:CE2	2.52	0.45
1:F:1002:LEU:HD23	1:F:1007:PHE:HZ	1.82	0.45
1:K:890:TRP:CZ2	1:F:580:GLN:HG2	2.52	0.45
1:F:845:HIS:HA	1:F:877:VAL:HG11	1.99	0.45
1:H:345:CYS:O	1:H:349:MET:HG3	2.16	0.45
1:K:495:CYS:SG	1:K:561:LEU:HD13	2.56	0.45
1:N:974:THR:HG22	1:N:975:GLU:N	2.30	0.45
1:B:918:ARG:HB3	1:B:918:ARG:HE	1.58	0.45
1:L:104:ASN:HB3	1:L:222:ASN:HB2	1.98	0.45
1:L:338:PRO:O	1:L:342:VAL:HG23	2.17	0.45
1:N:142:LYS:HD2	1:N:168:GLU:OE2	2.16	0.45
1:P:393:CYS:HB2	1:P:421:LEU:CD2	2.47	0.45
1:D:479:SER:HB2	1:D:516:GLY:HA3	1.98	0.44
1:D:534:ILE:HG13	1:D:693:HIS:HB2	1.99	0.44
1:F:119:PRO:HB3	2:F:1101:ADP:O3'	2.16	0.44
1:H:498:SER:O	1:H:502:THR:HG22	2.17	0.44
1:H:665:THR:HB	1:H:693:HIS:HB3	2.00	0.44
1:H:865:ASN:OD1	1:H:895:SER:OG	2.35	0.44
1:H:909:LEU:HD13	1:H:912:LEU:HB2	1.98	0.44
1:L:551:VAL:CG2	1:L:582:LYS:HG2	2.48	0.44
1:L:764:ASN:HA	1:L:792:LYS:HD3	1.99	0.44
1:B:415:SER:O	1:B:418:GLU:HG2	2.17	0.44
1:B:552:ASN:OD1	1:B:585:TYR:HB2	2.17	0.44
1:D:351:ARG:HE	1:D:369:LEU:HD13	1.82	0.44
1:D:872:ILE:HA	1:D:875:LEU:HG	1.99	0.44
1:H:97:ASP:HA	1:H:100:VAL:HG12	1.99	0.44
1:P:168:GLU:HA	1:P:279:THR:O	2.17	0.44
1:B:896:LEU:HD22	1:B:900:LEU:HD22	2.00	0.44
1:D:420:VAL:O	1:D:424:ILE:HG13	2.17	0.44

Continued on next page...

Continued from previous page...

Atom-1	Atom-2	Interatomic distance (Å)	Clash overlap (Å)
1:D:990:VAL:O	1:D:994:LEU:HG	2.18	0.44
1:F:979:PRO:O	1:F:1010:TYR:OH	2.27	0.44
1:K:238:LYS:HE2	1:K:238:LYS:HB2	1.56	0.44
1:K:920:ARG:NH2	1:K:922:GLU:OE2	2.50	0.44
1:K:962:GLU:HA	1:K:990:VAL:HG13	1.98	0.44
1:K:979:PRO:HB3	1:K:983:LEU:HD23	1.99	0.44
1:L:756:ILE:H	1:L:756:ILE:HG12	1.49	0.44
1:N:691:ARG:HG2	1:N:715:HIS:HB3	1.98	0.44
1:N:832:LEU:HB2	1:N:858:ASN:CG	2.38	0.44
1:N:981:ALA:O	1:N:984:VAL:HB	2.16	0.44
1:B:823:GLN:HA	1:B:850:LEU:HA	2.00	0.44
1:B:969:PHE:HE1	1:B:971:ASP:HB2	1.81	0.44
1:D:892:VAL:HG21	1:D:917:TRP:HA	1.98	0.44
1:F:788:ARG:HH22	1:F:817:GLU:CD	2.18	0.44
1:H:746:LEU:HD12	1:H:746:LEU:HA	1.87	0.44
1:H:756:ILE:HG12	1:H:756:ILE:H	1.45	0.44
1:K:931:LEU:HD22	1:K:964:LEU:HD21	1.99	0.44
1:L:997:LEU:O	1:L:1019:PHE:HB3	2.17	0.44
1:L:335:MET:HE3	1:L:341:VAL:HA	1.98	0.44
1:L:285:ARG:NH1	1:L:481:SER:OG	2.50	0.44
1:N:683:ILE:O	1:N:686:SER:OG	2.26	0.44
1:P:970:PHE:HE2	1:P:997:LEU:HD21	1.83	0.44
1:B:205:LEU:HB2	1:B:248:ASP:O	2.17	0.44
1:D:914:LEU:HB3	1:D:917:TRP:CG	2.52	0.44
1:F:1017:GLY:C	1:F:1019:PHE:H	2.21	0.44
1:F:267:GLU:OE1	1:F:270:ARG:NH1	2.40	0.44
1:F:382:ALA:O	1:F:384:GLY:N	2.50	0.44
1:F:825:MET:HB2	1:F:850:LEU:HD11	1.99	0.44
1:F:918:ARG:HA	1:F:946:GLY:O	2.18	0.44
1:H:562:PHE:O	1:H:565:SER:OG	2.34	0.44
1:N:205:LEU:HB3	1:N:253:PHE:HB2	2.00	0.44
1:N:325:ILE:HG12	1:N:331:LEU:HD23	2.00	0.44
1:N:832:LEU:HA	1:N:832:LEU:HD23	1.89	0.44
1:D:1002:LEU:HG	1:D:1005:TRP:CE2	2.53	0.44
1:H:646:PRO:O	1:H:650:SER:OG	2.36	0.44
1:K:816:SER:O	1:K:843:ASN:HB3	2.18	0.44
1:L:360:THR:OG1	1:L:564:GLU:OE1	2.27	0.44
1:D:645:PRO:HA	1:D:646:PRO:HD3	1.90	0.44
1:F:893:HIS:HB2	1:F:923:GLU:HG2	2.00	0.44
1:F:910:ALA:O	1:F:940:GLN:N	2.41	0.44
1:H:925:LYS:O	1:H:929:GLU:HG3	2.18	0.44

Continued on next page...

Continued from previous page...

Atom-1	Atom-2	Interatomic distance (Å)	Clash overlap (Å)
1:K:974:THR:HG23	1:K:975:GLU:O	2.18	0.44
1:N:780:ALA:HB2	1:N:804:ILE:HB	1.99	0.44
1:P:184:MET:HB2	1:P:184:MET:HE2	1.87	0.44
1:B:94:THR:OG1	1:B:97:ASP:HB2	2.18	0.44
1:D:515:HIS:CE1	1:D:547:LYS:HD2	2.52	0.44
1:D:911:LYS:HG2	1:D:941:GLN:CG	2.45	0.44
1:L:173:LYS:NZ	1:L:337:THR:HG22	2.33	0.44
1:N:130:LEU:HD21	1:N:180:GLN:HB3	2.00	0.44
1:P:138:ILE:HG12	1:P:138:ILE:O	2.16	0.44
1:P:588:SER:OG	1:P:616:PHE:HA	2.17	0.44
1:B:568:LYS:HD3	1:B:601:TYR:CZ	2.52	0.44
1:D:335:MET:HG3	1:D:341:VAL:HG22	1.98	0.44
1:D:583:SER:HB2	1:D:611:PHE:CE1	2.52	0.44
1:F:798:LEU:HD13	1:F:811:ILE:HD11	1.99	0.44
1:H:168:GLU:HA	1:H:279:THR:O	2.18	0.44
1:K:343:ILE:O	1:K:347:ILE:HG13	2.18	0.44
1:L:743:ILE:HG12	1:L:770:LEU:HD12	2.00	0.44
1:N:799:THR:HG22	1:N:828:VAL:HG13	2.00	0.44
1:P:474:LEU:HD21	1:P:505:VAL:HG22	2.00	0.44
1:D:515:HIS:CD2	1:D:547:LYS:HD2	2.51	0.43
1:F:365:THR:O	1:F:369:LEU:HB2	2.18	0.43
1:F:479:SER:O	1:F:483:ILE:HG13	2.18	0.43
1:H:506:MET:HG3	1:H:575:PHE:CE1	2.53	0.43
1:H:923:GLU:OE1	1:H:923:GLU:N	2.51	0.43
1:K:663:GLU:HG3	1:K:691:ARG:HB2	1.99	0.43
1:L:1015:ILE:HG23	1:L:1016:LYS:H	1.82	0.43
1:N:198:ARG:N	1:N:242:GLU:O	2.49	0.43
1:N:361:MET:O	1:N:365:THR:OG1	2.30	0.43
1:N:360:THR:OG1	1:N:564:GLU:OE1	2.21	0.43
1:P:753:GLY:HA3	1:P:754:GLY:HA3	1.73	0.43
1:P:822:LEU:HD23	1:P:822:LEU:HA	1.86	0.43
1:P:827:LEU:N	1:P:854:ASP:O	2.46	0.43
1:B:463:GLU:HA	1:B:464:PRO:HD2	1.80	0.43
1:F:329:ARG:O	1:F:333:ASN:ND2	2.51	0.43
1:F:393:CYS:HB2	1:F:421:LEU:CD2	2.48	0.43
1:F:900:LEU:HD22	1:F:930:PHE:CD2	2.53	0.43
1:H:313:LEU:HA	1:H:313:LEU:HD12	1.83	0.43
1:K:392:TYR:OH	1:K:418:GLU:OE2	2.27	0.43
1:K:747:HIS:NE2	1:K:772:ASP:OD1	2.42	0.43
1:N:240:HIS:HB3	1:N:241:LYS:H	1.52	0.43
1:N:941:GLN:HA	1:N:967:LEU:CD1	2.47	0.43

Continued on next page...

Continued from previous page...

Atom-1	Atom-2	Interatomic distance (Å)	Clash overlap (Å)
1:P:975:GLU:C	1:P:977:PHE:N	2.71	0.43
1:F:346:ALA:HA	1:F:349:MET:HE2	2.00	0.43
1:H:910:ALA:O	1:H:940:GLN:N	2.41	0.43
1:L:599:PHE:CD1	1:L:651:LEU:HD22	2.52	0.43
1:L:787:LEU:HD13	1:L:815:LEU:HD21	2.00	0.43
1:N:393:CYS:HB2	1:N:421:LEU:CD2	2.49	0.43
1:N:499:THR:O	1:N:502:THR:HG23	2.18	0.43
1:D:335:MET:HE3	1:D:341:VAL:HA	1.99	0.43
1:K:715:HIS:ND1	1:K:716:THR:HG22	2.33	0.43
1:K:833:THR:O	1:K:836:SER:OG	2.31	0.43
1:L:145:ARG:CG	1:L:523:VAL:CB	2.95	0.43
1:L:872:ILE:HA	1:L:875:LEU:HG	2.01	0.43
1:P:359:GLN:NE2	1:P:493:TYR:OH	2.47	0.43
1:D:161:LEU:HD21	1:D:276:ILE:HD11	2.00	0.43
1:D:534:ILE:CG1	1:D:693:HIS:HB2	2.49	0.43
1:H:756:ILE:HG22	1:H:783:LEU:HD13	2.01	0.43
1:K:337:THR:HA	1:K:338:PRO:HD3	1.79	0.43
1:L:115:LEU:HA	1:L:130:LEU:HD22	2.00	0.43
1:N:138:ILE:O	1:N:138:ILE:HG12	2.19	0.43
1:B:436:LYS:HE3	1:F:217:TYR:CZ	2.54	0.43
1:B:712:LYS:HD2	1:B:712:LYS:C	2.39	0.43
1:D:410:PRO:HG3	1:D:418:GLU:HG3	2.00	0.43
1:F:266:LYS:HA	1:F:290:VAL:HG11	1.99	0.43
1:F:980:ASP:N	1:F:980:ASP:OD2	2.51	0.43
1:N:478:VAL:O	1:N:512:VAL:HG13	2.18	0.43
1:N:568:LYS:HB3	1:N:601:TYR:CD2	2.53	0.43
1:N:931:LEU:HD21	1:N:936:LEU:HB2	2.01	0.43
1:P:322:TRP:CE3	1:P:325:ILE:HD12	2.54	0.43
1:P:968:VAL:O	1:P:998:GLN:N	2.49	0.43
1:B:245:PHE:HB2	1:B:275:VAL:HG12	2.00	0.43
1:D:817:GLU:HB3	1:D:818:GLU:HG3	2.00	0.43
1:F:240:HIS:CG	1:F:241:LYS:N	2.86	0.43
1:H:962:GLU:HA	1:H:990:VAL:HG13	2.00	0.43
1:L:371:ILE:HG13	1:L:372:GLN:N	2.33	0.43
1:N:934:ASN:HB3	1:N:935:PRO:O	2.18	0.43
1:N:962:GLU:HA	1:N:994:LEU:HD21	1.99	0.43
1:B:416:MET:H	1:B:416:MET:HG2	1.38	0.43
1:B:401:VAL:HG11	1:B:490:LEU:HD22	2.00	0.43
1:B:890:TRP:CZ3	1:B:918:ARG:HD3	2.54	0.43
1:F:285:ARG:O	1:F:520:GLY:HA3	2.19	0.43
1:H:145:ARG:HH21	1:H:667:ARG:HH21	1.65	0.43

Continued on next page...

Continued from previous page...

Atom-1	Atom-2	Interatomic distance (Å)	Clash overlap (Å)
1:L:823:GLN:HA	1:L:850:LEU:HA	2.00	0.43
1:N:96:GLU:H	1:N:96:GLU:CD	2.21	0.43
1:B:267:GLU:HB3	1:B:269:HIS:CE1	2.53	0.43
1:D:285:ARG:O	1:D:520:GLY:HA3	2.18	0.43
1:F:205:LEU:HB2	1:F:248:ASP:O	2.19	0.43
1:D:573:GLN:NE2	1:F:862:LYS:HB3	2.34	0.43
1:H:347:ILE:HA	1:H:369:LEU:HD21	2.01	0.43
1:L:920:ARG:HA	1:L:948:CYS:O	2.19	0.43
1:N:855:ILE:HG13	1:N:887:PRO:HD3	2.01	0.43
1:B:551:VAL:CG1	1:B:582:LYS:HG2	2.49	0.43
1:B:743:ILE:HG13	1:B:773:ILE:HD11	1.99	0.43
1:F:1001:LYS:HG3	1:F:1022:VAL:HB	2.01	0.43
1:K:449:TYR:OH	1:K:453:ARG:NH1	2.41	0.43
1:L:1017:GLY:C	1:L:1019:PHE:H	2.22	0.43
1:L:345:CYS:O	1:L:349:MET:HG3	2.19	0.43
1:L:522:SER:C	1:L:523:VAL:O	2.55	0.43
1:L:538:ARG:HE	1:L:538:ARG:HB3	1.51	0.43
1:N:502:THR:HG21	1:N:565:SER:HB2	2.01	0.43
1:N:947:HIS:O	1:N:947:HIS:CG	2.71	0.43
1:N:981:ALA:HA	1:N:984:VAL:HB	2.01	0.43
1:P:142:LYS:HD2	1:P:168:GLU:OE2	2.19	0.43
1:B:811:ILE:O	1:B:815:LEU:HG	2.19	0.42
1:B:859:TYR:CE1	1:B:889:CYS:HA	2.53	0.42
1:F:205:LEU:HB3	1:F:253:PHE:HB2	2.01	0.42
1:F:409:GLU:HB2	1:F:436:LYS:HD3	1.99	0.42
1:H:679:TYR:O	1:H:683:ILE:HG13	2.19	0.42
1:H:827:LEU:HD13	1:H:827:LEU:HA	1.84	0.42
1:K:308:LEU:HD13	2:K:1101:ADP:C2	2.54	0.42
1:K:746:LEU:HD12	1:K:746:LEU:HA	1.75	0.42
1:K:816:SER:HB2	1:K:843:ASN:HB2	2.00	0.42
1:L:746:LEU:HA	1:L:746:LEU:HD12	1.92	0.42
1:L:922:GLU:HG2	1:L:922:GLU:H	1.28	0.42
1:N:143:ASP:O	1:N:144:HIS:CG	2.72	0.42
1:N:931:LEU:HD11	1:N:964:LEU:HD21	2.01	0.42
1:D:168:GLU:HA	1:D:279:THR:O	2.18	0.42
1:D:974:THR:HG23	1:D:975:GLU:N	2.33	0.42
1:F:1012:ILE:O	1:F:1015:ILE:HG22	2.19	0.42
1:F:1001:LYS:HA	1:F:1022:VAL:HB	2.01	0.42
1:F:919:LEU:HD22	1:F:923:GLU:HB3	2.02	0.42
1:H:588:SER:OG	1:H:615:ASP:O	2.31	0.42
1:H:765:LEU:HD21	1:H:768:LEU:HD13	2.00	0.42

Continued on next page...

Continued from previous page...

Atom-1	Atom-2	Interatomic distance (Å)	Clash overlap (Å)
1:H:771:ASP:OD1	1:H:800:HIS:HB2	2.19	0.42
1:H:832:LEU:HD23	1:H:832:LEU:HA	1.87	0.42
1:K:562:PHE:HB2	1:K:575:PHE:CE1	2.54	0.42
1:L:309:ILE:HD11	1:L:335:MET:HE2	2.00	0.42
1:N:143:ASP:HB3	1:N:149:VAL:CG2	2.49	0.42
1:N:645:PRO:HA	1:N:646:PRO:HD3	1.91	0.42
1:N:791:LYS:HB3	1:N:791:LYS:HE3	1.86	0.42
1:P:911:LYS:HG2	1:P:941:GLN:HG2	2.01	0.42
1:P:920:ARG:HB2	1:P:922:GLU:HG2	2.00	0.42
1:D:362:LEU:HA	1:D:362:LEU:HD12	1.89	0.42
1:B:986:LYS:NZ	1:F:963:ASN:OD1	2.42	0.42
1:H:124:ILE:HD11	1:H:370:LEU:HD11	2.02	0.42
1:H:911:LYS:HG2	1:H:941:GLN:HG2	2.01	0.42
1:H:986:LYS:O	1:H:990:VAL:HG23	2.18	0.42
1:K:480:ILE:HG23	1:K:514:GLN:O	2.20	0.42
1:H:218:ASP:HA	1:L:435:LEU:HD21	2.01	0.42
1:L:816:SER:HB2	1:L:843:ASN:CB	2.48	0.42
1:N:313:LEU:HD12	1:N:313:LEU:HA	1.88	0.42
1:N:507:ARG:HG2	1:P:890:TRP:CE3	2.53	0.42
1:P:865:ASN:OD1	1:P:895:SER:OG	2.36	0.42
1:P:895:SER:O	1:P:899:LEU:N	2.42	0.42
1:F:126:ILE:HG23	1:F:312:VAL:HG11	2.02	0.42
1:K:803:ASP:OD2	1:F:462:LYS:HG2	2.19	0.42
1:H:541:THR:HG23	1:H:544:ASP:H	1.83	0.42
1:K:498:SER:O	1:K:502:THR:HG23	2.19	0.42
1:K:518:LEU:HD11	1:K:547:LYS:HG2	2.01	0.42
1:K:572:SER:HG	1:K:604:ASN:HD21	1.57	0.42
1:L:593:ASP:OD2	1:L:647:ARG:NH2	2.40	0.42
1:L:669:ILE:HB	1:L:697:CYS:SG	2.60	0.42
1:L:910:ALA:O	1:L:940:GLN:N	2.45	0.42
1:L:936:LEU:HB3	1:L:939:LEU:HB2	2.00	0.42
1:P:595:LEU:HD13	1:P:595:LEU:HA	1.79	0.42
1:D:822:LEU:HD23	1:D:822:LEU:HA	1.91	0.42
1:H:238:LYS:O	1:H:240:HIS:ND1	2.49	0.42
1:H:393:CYS:HB2	1:H:421:LEU:CD2	2.49	0.42
1:H:915:LYS:HG2	1:H:945:ALA:HB3	2.01	0.42
1:K:252:GLU:HA	1:K:406:PHE:CE2	2.54	0.42
1:L:205:LEU:HD12	1:L:205:LEU:HA	1.88	0.42
1:L:990:VAL:O	1:L:994:LEU:HG	2.20	0.42
1:N:537:LEU:HD21	1:N:740:ASN:HB3	2.01	0.42
1:P:189:GLY:N	1:P:190:GLY:HA3	2.33	0.42

Continued on next page...

Continued from previous page...

Atom-1	Atom-2	Interatomic distance (Å)	Clash overlap (Å)
1:P:832:LEU:HA	1:P:832:LEU:HD23	1.85	0.42
1:B:265:ILE:HG23	1:B:277:VAL:HG21	2.02	0.42
1:B:562:PHE:HB2	1:B:575:PHE:CE1	2.53	0.42
1:B:969:PHE:C	1:B:969:PHE:CD1	2.93	0.42
1:D:170:GLU:O	1:D:175:LYS:NZ	2.53	0.42
1:D:313:LEU:HA	1:D:313:LEU:HD12	1.86	0.42
1:K:93:VAL:HG22	1:K:231:THR:HG22	2.00	0.42
1:K:479:SER:O	1:K:483:ILE:HG13	2.20	0.42
1:N:775:MET:SD	1:N:801:LEU:HD22	2.60	0.42
1:P:543:GLN:O	1:P:547:LYS:HG3	2.19	0.42
1:B:130:LEU:O	1:B:181:ARG:NH2	2.52	0.42
1:B:285:ARG:NH1	1:B:521:LEU:HD21	2.34	0.42
1:B:524:THR:O	1:B:527:PRO:HD2	2.19	0.42
1:B:675:GLN:HG2	1:B:679:TYR:CE2	2.54	0.42
1:D:341:VAL:O	1:D:344:THR:OG1	2.35	0.42
1:F:914:LEU:HB3	1:F:917:TRP:CG	2.55	0.42
1:H:333:ASN:HA	1:H:336:LYS:NZ	2.34	0.42
1:K:474:LEU:HD23	1:K:477:MET:HE1	2.01	0.42
1:K:599:PHE:O	1:K:657:GLN:NE2	2.52	0.42
1:K:664:VAL:HG22	1:K:692:LEU:HD23	2.01	0.42
1:L:874:ARG:CG	1:L:874:ARG:HH11	2.26	0.42
1:N:429:LYS:O	1:N:431:THR:HG23	2.20	0.42
1:N:852:ILE:HD13	1:N:883:THR:HB	2.02	0.42
1:N:931:LEU:CD2	1:N:936:LEU:HB2	2.50	0.42
1:P:955:LEU:CD1	1:P:983:LEU:N	2.82	0.42
1:F:405:LYS:HE2	1:F:405:LYS:HB3	1.82	0.42
1:H:96:GLU:O	1:H:100:VAL:HG12	2.19	0.42
1:H:991:LEU:HD13	1:H:997:LEU:CD2	2.50	0.42
1:K:145:ARG:NH1	1:K:615:ASP:OD2	2.52	0.42
1:L:854:ASP:OD2	1:L:856:SER:OG	2.34	0.42
1:N:990:VAL:O	1:N:994:LEU:HG	2.20	0.42
1:D:677:ILE:HG23	1:D:707:VAL:HG22	2.00	0.42
1:D:764:ASN:HA	1:D:792:LYS:HD3	2.01	0.42
1:K:282:GLU:H	1:K:282:GLU:HG3	1.65	0.42
1:K:345:CYS:O	1:K:349:MET:HG3	2.19	0.42
1:K:777:GLU:O	1:K:781:LYS:HG3	2.20	0.42
1:L:825:MET:HG2	1:L:827:LEU:HD13	2.02	0.42
1:N:269:HIS:CD2	1:N:269:HIS:H	2.37	0.42
1:N:605:CYS:O	1:N:609:LEU:HG	2.20	0.42
1:N:964:LEU:HG	1:N:964:LEU:H	1.48	0.42
1:P:460:THR:HG21	1:P:498:SER:OG	2.20	0.42

Continued on next page...

Continued from previous page...

Atom-1	Atom-2	Interatomic distance (Å)	Clash overlap (Å)
1:P:480:ILE:HG13	1:P:514:GLN:O	2.20	0.42
1:P:712:LYS:HD2	1:P:712:LYS:HA	1.93	0.42
1:B:1018:THR:OG1	1:B:1018:THR:O	2.37	0.42
1:B:478:VAL:O	1:B:512:VAL:HG13	2.20	0.42
1:B:945:ALA:O	1:B:946:GLY:C	2.58	0.42
1:D:325:ILE:HD13	1:D:335:MET:HG2	2.01	0.42
1:D:429:LYS:HB2	1:D:439:TYR:CD2	2.55	0.42
1:D:859:TYR:HH	1:D:890:TRP:HD1	1.66	0.42
1:H:582:LYS:O	1:H:610:ASP:N	2.52	0.42
1:H:931:LEU:HA	1:H:931:LEU:HD23	1.81	0.42
1:K:248:ASP:HA	1:K:278:THR:HB	2.01	0.42
1:K:288:ARG:NH2	1:K:522:SER:O	2.47	0.42
1:K:571:LEU:HB3	1:K:575:PHE:HD2	1.85	0.42
1:L:333:ASN:HA	1:L:336:LYS:HZ3	1.85	0.42
1:L:653:PHE:O	1:L:654:ASN:HB2	2.20	0.42
1:L:970:PHE:HZ	1:L:991:LEU:HD11	1.84	0.42
1:B:282:GLU:H	1:B:282:GLU:HG3	1.63	0.41
1:B:854:ASP:HA	1:B:885:MET:HB2	2.02	0.41
1:B:986:LYS:O	1:B:990:VAL:HG23	2.20	0.41
1:D:925:LYS:O	1:D:929:GLU:HG3	2.19	0.41
1:F:549:ILE:O	1:F:552:ASN:HB2	2.19	0.41
1:K:507:ARG:NH1	1:K:574:GLU:HG3	2.34	0.41
1:K:537:LEU:HD21	1:K:740:ASN:HB3	2.01	0.41
1:K:743:ILE:HG13	1:K:743:ILE:O	2.20	0.41
1:K:813:LYS:HE3	1:K:817:GLU:HG3	2.01	0.41
1:L:518:LEU:HA	1:L:521:LEU:HD22	2.02	0.41
1:N:591:ILE:HB	1:N:647:ARG:HG2	2.02	0.41
1:N:740:ASN:ND2	1:N:767:ARG:HB2	2.35	0.41
1:N:770:LEU:HD12	1:N:770:LEU:HA	1.93	0.41
1:P:324:GLN:OE1	1:P:353:GLU:HG2	2.20	0.41
1:P:756:ILE:HG22	1:P:783:LEU:HD13	2.02	0.41
1:P:869:GLN:NE2	1:P:898:LYS:HD3	2.34	0.41
1:D:229:LYS:HB3	1:D:230:PRO:HD3	2.02	0.41
1:F:361:MET:O	1:F:365:THR:OG1	2.29	0.41
1:F:900:LEU:HD22	1:F:930:PHE:CG	2.55	0.41
1:L:817:GLU:HB3	1:L:818:GLU:HG3	2.02	0.41
1:N:339:LEU:O	1:N:343:ILE:HG13	2.20	0.41
1:N:480:ILE:HG23	1:N:514:GLN:O	2.20	0.41
1:N:588:SER:HA	1:N:591:ILE:HD11	2.03	0.41
1:B:225:ASP:HB3	1:F:409:GLU:O	2.21	0.41
1:B:920:ARG:HA	1:B:948:CYS:O	2.20	0.41

Continued on next page...

Continued from previous page...

Atom-1	Atom-2	Interatomic distance (Å)	Clash overlap (Å)
1:D:891:ASP:N	1:D:891:ASP:OD1	2.44	0.41
1:F:205:LEU:HD12	1:F:205:LEU:HA	1.89	0.41
1:F:345:CYS:O	1:F:349:MET:HG3	2.20	0.41
1:F:824:GLU:HG2	1:F:852:ILE:HB	2.02	0.41
1:H:230:PRO:HG3	1:L:256:GLN:HG2	2.02	0.41
1:H:167:ILE:HB	1:H:278:THR:HG22	2.01	0.41
1:H:492:LEU:HG	1:H:564:GLU:HG3	2.03	0.41
1:H:568:LYS:HD3	1:H:601:TYR:CE1	2.56	0.41
1:K:173:LYS:HD3	1:K:173:LYS:HA	1.68	0.41
1:L:752:PRO:HA	1:L:757:ASP:OD1	2.20	0.41
1:N:158:LEU:O	1:N:161:LEU:HG	2.20	0.41
1:N:334:LEU:HA	1:N:334:LEU:HD13	1.88	0.41
1:N:479:SER:O	1:N:483:ILE:HG13	2.21	0.41
1:N:619:ARG:HH11	1:N:645:PRO:HB3	1.86	0.41
1:N:906:THR:O	1:N:909:LEU:HB2	2.20	0.41
1:P:776:ASN:H	1:P:779:ASP:HB2	1.85	0.41
1:P:970:PHE:HZ	1:P:991:LEU:HD21	1.84	0.41
1:B:740:ASN:HD22	1:B:767:ARG:HB2	1.86	0.41
1:D:398:LEU:HD23	1:D:398:LEU:HA	1.91	0.41
1:D:418:GLU:H	1:D:418:GLU:HG2	1.59	0.41
1:D:797:HIS:CE1	1:D:826:LYS:HG3	2.56	0.41
1:F:1018:THR:OG1	1:F:1018:THR:O	2.39	0.41
1:F:164:PRO:HG2	1:F:290:VAL:HG12	2.02	0.41
1:F:716:THR:HG22	1:F:740:ASN:HD22	1.85	0.41
1:K:322:TRP:CE3	1:K:325:ILE:HD12	2.55	0.41
1:L:168:GLU:HB3	1:L:284:LEU:HD13	2.01	0.41
1:L:351:ARG:HE	1:L:369:LEU:HG	1.84	0.41
1:N:371:ILE:O	1:N:375:SER:HB3	2.21	0.41
1:N:434:ARG:NH2	1:N:438:THR:HG21	2.34	0.41
1:N:694:ILE:HD12	1:N:719:VAL:HG22	2.03	0.41
1:P:416:MET:O	1:P:420:VAL:HG23	2.20	0.41
1:P:799:THR:HA	1:P:828:VAL:O	2.20	0.41
1:B:434:ARG:HB3	1:B:436:LYS:O	2.20	0.41
1:B:595:LEU:HA	1:B:595:LEU:HD13	1.76	0.41
1:D:252:GLU:HA	1:D:406:PHE:CE2	2.55	0.41
1:F:653:PHE:HA	1:F:656:LYS:HD2	2.02	0.41
1:F:888:TRP:HA	1:F:892:VAL:HG11	2.02	0.41
1:H:306:LYS:HD2	1:H:322:TRP:CE2	2.56	0.41
1:H:750:GLN:HG3	1:H:756:ILE:HD11	2.03	0.41
1:K:228:SER:OG	1:K:231:THR:OG1	2.17	0.41
1:K:361:MET:O	1:K:365:THR:OG1	2.31	0.41

Continued on next page...

Continued from previous page...

Atom-1	Atom-2	Interatomic distance (Å)	Clash overlap (Å)
1:B:832:LEU:HB2	1:B:858:ASN:OD1	2.20	0.41
1:K:669:ILE:HB	1:K:697:CYS:SG	2.61	0.41
1:N:968:VAL:O	1:N:998:GLN:N	2.44	0.41
1:P:855:ILE:O	1:P:858:ASN:ND2	2.53	0.41
1:B:221:LEU:HD12	1:B:221:LEU:HA	1.96	0.41
1:D:920:ARG:HA	1:D:920:ARG:HD2	1.85	0.41
1:F:347:ILE:O	1:F:351:ARG:N	2.52	0.41
1:K:890:TRP:CH2	1:F:580:GLN:HG2	2.55	0.41
1:F:617:TYR:C	1:F:619:ARG:H	2.23	0.41
1:F:800:HIS:H	1:F:829:ALA:HB3	1.86	0.41
1:F:931:LEU:HA	1:F:931:LEU:HD23	1.83	0.41
1:K:920:ARG:HE	1:K:920:ARG:HB2	1.73	0.41
1:N:266:LYS:HA	1:N:290:VAL:HG21	2.02	0.41
1:N:274:MET:HE3	1:N:274:MET:HB3	1.73	0.41
1:P:872:ILE:HA	1:P:875:LEU:HG	2.02	0.41
1:P:924:ILE:HD13	1:P:924:ILE:HA	1.70	0.41
1:B:672:LEU:HB2	1:B:699:ALA:HB1	2.02	0.41
1:B:672:LEU:HD12	1:B:676:ASP:HB3	2.02	0.41
1:B:679:TYR:O	1:B:683:ILE:HG13	2.21	0.41
1:B:936:LEU:HD12	1:B:936:LEU:HA	1.78	0.41
1:D:321:LEU:O	1:D:325:ILE:HG13	2.21	0.41
1:D:745:ARG:HA	1:D:772:ASP:HB3	2.03	0.41
1:F:421:LEU:HB2	1:F:427:LEU:HD12	2.02	0.41
1:K:206:ARG:HG2	1:K:207:SER:N	2.35	0.41
1:L:576:GLU:HB2	1:L:604:ASN:HD22	1.85	0.41
1:L:800:HIS:H	1:L:829:ALA:HB3	1.86	0.41
1:N:337:THR:HA	1:N:338:PRO:HD3	1.89	0.41
1:N:719:VAL:HG11	1:N:724:LEU:HD13	2.02	0.41
1:N:744:HIS:NE2	1:N:771:ASP:OD2	2.54	0.41
1:B:712:LYS:O	1:B:712:LYS:HD2	2.20	0.41
1:B:990:VAL:O	1:B:994:LEU:HG	2.20	0.41
1:D:303:ASP:OD2	1:D:303:ASP:N	2.54	0.41
1:F:173:LYS:HA	1:F:173:LYS:HD3	1.77	0.41
1:F:832:LEU:HB2	1:F:858:ASN:CG	2.42	0.41
1:K:531:GLN:NE2	1:K:744:HIS:HE1	2.18	0.41
1:K:918:ARG:NH2	1:K:975:GLU:OE1	2.53	0.41
1:L:477:MET:HE1	1:L:491:LEU:HD21	2.02	0.41
1:N:189:GLY:HA3	1:N:190:GLY:HA2	1.56	0.41
1:P:97:ASP:HA	1:P:100:VAL:HG22	2.02	0.41
1:P:987:LEU:O	1:P:991:LEU:HB2	2.21	0.41
1:B:383:SER:HB3	1:B:384:GLY:H	1.57	0.41

Continued on next page...

Continued from previous page...

Atom-1	Atom-2	Interatomic distance (Å)	Clash overlap (Å)
1:B:420:VAL:O	1:B:423:THR:OG1	2.26	0.41
1:B:555:VAL:O	1:B:559:ILE:HG13	2.21	0.41
1:B:645:PRO:HA	1:B:646:PRO:HD3	1.95	0.41
1:B:746:LEU:HD23	1:B:746:LEU:HA	1.65	0.41
1:B:813:LYS:O	1:B:817:GLU:N	2.53	0.41
1:D:568:LYS:HB3	1:D:601:TYR:CD2	2.56	0.41
1:B:376:HIS:HE2	1:H:107:ASP:CG	2.25	0.41
1:L:324:GLN:HE22	1:L:354:PHE:H	1.67	0.41
1:N:621:THR:HG21	1:N:679:TYR:HB2	2.03	0.41
1:P:338:PRO:O	1:P:342:VAL:HG23	2.21	0.41
1:P:680:LEU:HB3	1:P:684:PHE:CE2	2.55	0.41
1:B:918:ARG:HG2	1:B:918:ARG:H	1.52	0.41
1:F:859:TYR:CE1	1:F:889:CYS:HA	2.56	0.41
1:H:813:LYS:HD3	1:H:817:GLU:OE2	2.21	0.41
1:K:823:GLN:HA	1:K:850:LEU:HA	2.02	0.41
1:K:914:LEU:HB3	1:K:917:TRP:CD1	2.56	0.41
1:K:925:LYS:HA	1:K:956:TYR:HE2	1.86	0.41
1:B:131:GLU:HA	1:B:181:ARG:HH22	1.86	0.40
1:B:614:LEU:HD23	1:B:616:PHE:CE2	2.56	0.40
1:D:360:THR:OG1	1:D:564:GLU:OE1	2.25	0.40
1:D:665:THR:HG23	1:D:693:HIS:HB3	2.03	0.40
1:F:816:SER:HB2	1:F:843:ASN:CB	2.52	0.40
1:F:822:LEU:HD23	1:F:822:LEU:HA	1.86	0.40
1:N:904:GLU:HG2	1:N:930:PHE:HE1	1.86	0.40
1:P:612:VAL:O	1:P:662:LEU:HD23	2.21	0.40
1:F:378:TYR:HD2	1:F:386:PHE:CD1	2.34	0.40
1:F:968:VAL:HG12	1:F:998:GLN:HB2	2.02	0.40
1:H:343:ILE:O	1:H:347:ILE:HG13	2.20	0.40
1:H:799:THR:HA	1:H:828:VAL:O	2.20	0.40
1:K:266:LYS:HA	1:K:290:VAL:HG21	2.03	0.40
1:K:562:PHE:O	1:K:565:SER:OG	2.32	0.40
1:N:506:MET:HG3	1:N:575:PHE:CE1	2.56	0.40
1:P:751:LEU:HD23	1:P:752:PRO:O	2.22	0.40
1:B:240:HIS:HB3	1:B:241:LYS:H	1.50	0.40
1:D:205:LEU:CD2	1:D:247:LEU:HB3	2.45	0.40
1:D:400:GLY:O	1:D:404:HIS:N	2.55	0.40
1:F:239:LEU:HA	1:F:239:LEU:HD22	1.89	0.40
1:H:134:PHE:CZ	1:H:181:ARG:HG2	2.56	0.40
1:H:816:SER:HB2	1:H:843:ASN:CB	2.51	0.40
1:K:161:LEU:HD21	1:K:276:ILE:HD11	2.03	0.40
1:L:399:GLU:OE1	1:L:473:TYR:OH	2.29	0.40

Continued on next page...

Continued from previous page...

Atom-1	Atom-2	Interatomic distance (Å)	Clash overlap (Å)
1:L:656:LYS:HG2	1:L:656:LYS:H	1.47	0.40
1:L:92:GLN:O	1:L:93:VAL:HG22	2.22	0.40
1:N:98:LEU:HD13	1:N:235:LEU:HD21	2.02	0.40
1:N:925:LYS:O	1:N:929:GLU:HG2	2.21	0.40
1:P:882:THR:O	1:P:910:ALA:N	2.51	0.40
1:B:164:PRO:HG2	1:B:290:VAL:CG1	2.52	0.40
1:D:931:LEU:HD23	1:D:931:LEU:HA	1.82	0.40
1:F:876:GLY:N	1:F:902:GLN:HE21	2.19	0.40
1:F:915:LYS:HA	1:F:945:ALA:HB3	2.03	0.40
1:H:216:LEU:HD11	1:H:245:PHE:HE1	1.86	0.40
1:H:495:CYS:HB3	1:H:502:THR:HB	2.02	0.40
1:H:503:ARG:HG3	1:H:571:LEU:CD1	2.51	0.40
1:K:614:LEU:O	1:K:664:VAL:HA	2.21	0.40
1:N:769:ILE:HA	1:N:797:HIS:HB2	2.03	0.40
1:B:344:THR:HB	1:B:362:LEU:HD11	2.04	0.40
1:B:724:LEU:HG	1:B:728:ASP:HB2	2.04	0.40
1:B:746:LEU:O	1:B:747:HIS:HB2	2.22	0.40
1:D:426:LEU:HA	1:D:426:LEU:HD13	1.82	0.40
1:D:813:LYS:HD2	1:D:839:VAL:HG11	2.04	0.40
1:F:753:GLY:HA3	1:F:754:GLY:HA3	1.73	0.40
1:F:921:ASP:O	1:F:925:LYS:HB2	2.21	0.40
1:H:93:VAL:HG11	1:H:235:LEU:HD22	2.03	0.40
1:K:416:MET:O	1:K:420:VAL:HG23	2.22	0.40
1:K:781:LYS:O	1:K:785:GLU:HG3	2.21	0.40
1:N:126:ILE:HG21	1:N:342:VAL:HG13	2.03	0.40
1:N:223:ILE:HA	1:N:224:PRO:HD3	1.91	0.40
1:N:543:GLN:O	1:N:547:LYS:HG3	2.21	0.40
1:N:909:LEU:O	1:N:939:LEU:HA	2.21	0.40
1:P:126:ILE:HG21	1:P:342:VAL:HG13	2.02	0.40
1:P:568:LYS:HB2	1:P:568:LYS:HE2	1.95	0.40

All (2) symmetry-related close contacts are listed below. The label for Atom-2 includes the symmetry operator and encoded unit-cell translations to be applied.

Atom-1	Atom-2	Interatomic distance (Å)	Clash overlap (Å)
1:K:433:GLN:CD	1:K:433:GLN:NE2[8_555]	1.34	0.86
1:K:433:GLN:OE1	1:K:433:GLN:NE2[8_555]	1.76	0.44

5.3 Torsion angles [i](#)

5.3.1 Protein backbone [i](#)

In the following table, the Percentiles column shows the percent Ramachandran outliers of the chain as a percentile score with respect to all X-ray entries followed by that with respect to entries of similar resolution.

The Analysed column shows the number of residues for which the backbone conformation was analysed, and the total number of residues.

Mol	Chain	Analysed	Favoured	Allowed	Outliers	Percentiles	
1	B	896/1024 (88%)	875 (98%)	21 (2%)	0	100	100
1	D	893/1024 (87%)	864 (97%)	28 (3%)	1 (0%)	53	87
1	F	892/1024 (87%)	868 (97%)	23 (3%)	1 (0%)	53	87
1	H	887/1024 (87%)	862 (97%)	25 (3%)	0	100	100
1	K	895/1024 (87%)	878 (98%)	15 (2%)	2 (0%)	49	83
1	L	882/1024 (86%)	859 (97%)	21 (2%)	2 (0%)	49	83
1	N	870/1024 (85%)	847 (97%)	20 (2%)	3 (0%)	43	79
1	P	856/1024 (84%)	824 (96%)	31 (4%)	1 (0%)	53	87
All	All	7071/8192 (86%)	6877 (97%)	184 (3%)	10 (0%)	53	87

All (10) Ramachandran outliers are listed below:

Mol	Chain	Res	Type
1	L	93	VAL
1	N	976	GLU
1	N	979	PRO
1	K	568	LYS
1	F	1018	THR
1	K	519	GLN
1	D	519	GLN
1	P	519	GLN
1	L	519	GLN
1	N	947	HIS

5.3.2 Protein sidechains [i](#)

In the following table, the Percentiles column shows the percent sidechain outliers of the chain as a percentile score with respect to all X-ray entries followed by that with respect to entries of similar resolution.

The Analysed column shows the number of residues for which the sidechain conformation was analysed, and the total number of residues.

Mol	Chain	Analysed	Rotameric	Outliers	Percentiles	
1	B	797/912 (87%)	668 (84%)	129 (16%)	2	12
1	D	795/912 (87%)	678 (85%)	117 (15%)	3	16
1	F	795/912 (87%)	679 (85%)	116 (15%)	3	16
1	H	788/912 (86%)	665 (84%)	123 (16%)	3	13
1	K	798/912 (88%)	668 (84%)	130 (16%)	2	12
1	L	785/912 (86%)	663 (84%)	122 (16%)	3	14
1	N	769/912 (84%)	642 (84%)	127 (16%)	2	12
1	P	754/912 (83%)	626 (83%)	128 (17%)	2	11
All	All	6281/7296 (86%)	5289 (84%)	992 (16%)	3	13

All (992) residues with a non-rotameric sidechain are listed below:

Mol	Chain	Res	Type
1	K	95	GLU
1	K	97	ASP
1	K	108	LEU
1	K	111	SER
1	K	115	LEU
1	K	120	LEU
1	K	133	THR
1	K	138	ILE
1	K	139	MET
1	K	143	ASP
1	K	168	GLU
1	K	171	SER
1	K	175	LYS
1	K	177	THR
1	K	178	LEU
1	K	184	MET
1	K	195	LYS
1	K	206	ARG
1	K	209	ARG
1	K	221	LEU
1	K	223	ILE
1	K	231	THR
1	K	233	LYS
1	K	238	LYS

Continued on next page...

Continued from previous page...

Mol	Chain	Res	Type
1	K	256	GLN
1	K	266	LYS
1	K	281	THR
1	K	287	ILE
1	K	288	ARG
1	K	301	THR
1	K	314	VAL
1	K	324	GLN
1	K	335	MET
1	K	337	THR
1	K	359	GLN
1	K	369	LEU
1	K	396	LEU
1	K	404	HIS
1	K	409	GLU
1	K	414	SER
1	K	416	MET
1	K	417	ASN
1	K	418	GLU
1	K	423	THR
1	K	433	GLN
1	K	445	SER
1	K	455	LEU
1	K	463	GLU
1	K	481	SER
1	K	498	SER
1	K	507	ARG
1	K	511	MET
1	K	523	VAL
1	K	525	LYS
1	K	531	GLN
1	K	540	THR
1	K	543	GLN
1	K	553	SER
1	K	563	SER
1	K	569	SER
1	K	571	LEU
1	K	573	GLN
1	K	580	GLN
1	K	583	SER
1	K	589	GLU
1	K	591	ILE

Continued on next page...

Continued from previous page...

Mol	Chain	Res	Type
1	K	619	ARG
1	K	621	THR
1	K	647	ARG
1	K	650	SER
1	K	651	LEU
1	K	660	LYS
1	K	664	VAL
1	K	675	GLN
1	K	685	SER
1	K	690	LEU
1	K	692	LEU
1	K	703	ARG
1	K	710	THR
1	K	716	THR
1	K	735	VAL
1	K	743	ILE
1	K	745	ARG
1	K	746	LEU
1	K	749	GLN
1	K	751	LEU
1	K	755	LEU
1	K	756	ILE
1	K	762	LEU
1	K	770	LEU
1	K	788	ARG
1	K	789	SER
1	K	790	LEU
1	K	793	MET
1	K	832	LEU
1	K	847	LEU
1	K	848	ILE
1	K	874	ARG
1	K	878	LEU
1	K	886	LEU
1	K	892	VAL
1	K	896	LEU
1	K	900	LEU
1	K	902	GLN
1	K	909	LEU
1	K	911	LYS
1	K	914	LEU
1	K	918	ARG

Continued on next page...

Continued from previous page...

Mol	Chain	Res	Type
1	K	924	ILE
1	K	925	LYS
1	K	926	SER
1	K	934	ASN
1	K	936	LEU
1	K	939	LEU
1	K	966	GLN
1	K	976	GLU
1	K	988	SER
1	K	993	LYS
1	K	995	THR
1	K	996	LEU
1	K	997	LEU
1	K	1003	THR
1	K	1008	ASP
1	K	1010	TYR
1	K	1012	ILE
1	K	1013	SER
1	K	1016	LYS
1	K	1018	THR
1	K	1020	LYS
1	K	1023	THR
1	B	97	ASP
1	B	100	VAL
1	B	115	LEU
1	B	120	LEU
1	B	133	THR
1	B	139	MET
1	B	161	LEU
1	B	168	GLU
1	B	171	SER
1	B	184	MET
1	B	188	SER
1	B	195	LYS
1	B	206	ARG
1	B	209	ARG
1	B	221	LEU
1	B	223	ILE
1	B	225	ASP
1	B	231	THR
1	B	237	LEU
1	B	240	HIS

Continued on next page...

Continued from previous page...

Mol	Chain	Res	Type
1	B	256	GLN
1	B	274	MET
1	B	281	THR
1	B	287	ILE
1	B	288	ARG
1	B	314	VAL
1	B	319	GLU
1	B	335	MET
1	B	337	THR
1	B	339	LEU
1	B	352	GLN
1	B	353	GLU
1	B	383	SER
1	B	396	LEU
1	B	409	GLU
1	B	411	GLU
1	B	416	MET
1	B	418	GLU
1	B	421	LEU
1	B	434	ARG
1	B	455	LEU
1	B	463	GLU
1	B	497	SER
1	B	498	SER
1	B	499	THR
1	B	502	THR
1	B	503	ARG
1	B	519	GLN
1	B	523	VAL
1	B	526	ARG
1	B	528	LEU
1	B	529	TRP
1	B	530	ARG
1	B	535	GLN
1	B	540	THR
1	B	541	THR
1	B	542	GLU
1	B	543	GLN
1	B	563	SER
1	B	573	GLN
1	B	583	SER
1	B	588	SER

Continued on next page...

Continued from previous page...

Mol	Chain	Res	Type
1	B	595	LEU
1	B	621	THR
1	B	647	ARG
1	B	662	LEU
1	B	664	VAL
1	B	670	ASN
1	B	685	SER
1	B	689	ASN
1	B	692	LEU
1	B	706	SER
1	B	712	LYS
1	B	713	ASN
1	B	714	MET
1	B	725	THR
1	B	735	VAL
1	B	744	HIS
1	B	749	GLN
1	B	751	LEU
1	B	755	LEU
1	B	762	LEU
1	B	770	LEU
1	B	774	ARG
1	B	789	SER
1	B	790	LEU
1	B	791	LYS
1	B	793	MET
1	B	802	SER
1	B	806	GLU
1	B	822	LEU
1	B	828	VAL
1	B	832	LEU
1	B	847	LEU
1	B	848	ILE
1	B	850	LEU
1	B	851	SER
1	B	857	GLU
1	B	862	LYS
1	B	878	LEU
1	B	880	GLU
1	B	892	VAL
1	B	896	LEU
1	B	900	LEU

Continued on next page...

Continued from previous page...

Mol	Chain	Res	Type
1	B	909	LEU
1	B	911	LYS
1	B	914	LEU
1	B	918	ARG
1	B	920	ARG
1	B	924	ILE
1	B	926	SER
1	B	934	ASN
1	B	936	LEU
1	B	939	LEU
1	B	951	SER
1	B	955	LEU
1	B	962	GLU
1	B	964	LEU
1	B	969	PHE
1	B	975	GLU
1	B	988	SER
1	B	989	GLN
1	B	995	THR
1	B	996	LEU
1	B	1002	LEU
1	B	1007	PHE
1	B	1015	ILE
1	B	1018	THR
1	B	1020	LYS
1	D	115	LEU
1	D	120	LEU
1	D	130	LEU
1	D	133	THR
1	D	138	ILE
1	D	139	MET
1	D	142	LYS
1	D	145	ARG
1	D	168	GLU
1	D	181	ARG
1	D	184	MET
1	D	192	ARG
1	D	200	VAL
1	D	206	ARG
1	D	209	ARG
1	D	221	LEU
1	D	227	ILE

Continued on next page...

Continued from previous page...

Mol	Chain	Res	Type
1	D	231	THR
1	D	237	LEU
1	D	278	THR
1	D	287	ILE
1	D	288	ARG
1	D	301	THR
1	D	303	ASP
1	D	314	VAL
1	D	334	LEU
1	D	335	MET
1	D	339	LEU
1	D	351	ARG
1	D	352	GLN
1	D	353	GLU
1	D	359	GLN
1	D	371	ILE
1	D	396	LEU
1	D	409	GLU
1	D	411	GLU
1	D	414	SER
1	D	423	THR
1	D	430	TYR
1	D	436	LYS
1	D	445	SER
1	D	455	LEU
1	D	462	LYS
1	D	463	GLU
1	D	475	ASN
1	D	481	SER
1	D	490	LEU
1	D	498	SER
1	D	507	ARG
1	D	511	MET
1	D	523	VAL
1	D	537	LEU
1	D	541	THR
1	D	543	GLN
1	D	547	LYS
1	D	563	SER
1	D	573	GLN
1	D	580	GLN
1	D	583	SER

Continued on next page...

Continued from previous page...

Mol	Chain	Res	Type
1	D	589	GLU
1	D	595	LEU
1	D	614	LEU
1	D	621	THR
1	D	651	LEU
1	D	657	GLN
1	D	664	VAL
1	D	670	ASN
1	D	682	LYS
1	D	685	SER
1	D	689	ASN
1	D	690	LEU
1	D	692	LEU
1	D	696	ARG
1	D	711	CYS
1	D	713	ASN
1	D	725	THR
1	D	730	GLN
1	D	735	VAL
1	D	736	THR
1	D	746	LEU
1	D	755	LEU
1	D	756	ILE
1	D	762	LEU
1	D	770	LEU
1	D	789	SER
1	D	790	LEU
1	D	793	MET
1	D	828	VAL
1	D	832	LEU
1	D	847	LEU
1	D	878	LEU
1	D	886	LEU
1	D	891	ASP
1	D	892	VAL
1	D	900	LEU
1	D	903	LEU
1	D	906	THR
1	D	909	LEU
1	D	914	LEU
1	D	924	ILE
1	D	934	ASN

Continued on next page...

Continued from previous page...

Mol	Chain	Res	Type
1	D	936	LEU
1	D	951	SER
1	D	955	LEU
1	D	962	GLU
1	D	964	LEU
1	D	965	LYS
1	D	976	GLU
1	D	978	LEU
1	D	987	LEU
1	D	988	SER
1	D	989	GLN
1	D	993	LYS
1	D	996	LEU
1	D	997	LEU
1	D	1008	ASP
1	D	1018	THR
1	F	97	ASP
1	F	115	LEU
1	F	133	THR
1	F	139	MET
1	F	145	ARG
1	F	161	LEU
1	F	168	GLU
1	F	184	MET
1	F	192	ARG
1	F	205	LEU
1	F	206	ARG
1	F	209	ARG
1	F	219	GLN
1	F	223	ILE
1	F	227	ILE
1	F	231	THR
1	F	239	LEU
1	F	274	MET
1	F	278	THR
1	F	281	THR
1	F	288	ARG
1	F	301	THR
1	F	303	ASP
1	F	308	LEU
1	F	324	GLN
1	F	335	MET

Continued on next page...

Continued from previous page...

Mol	Chain	Res	Type
1	F	337	THR
1	F	339	LEU
1	F	344	THR
1	F	351	ARG
1	F	353	GLU
1	F	357	HIS
1	F	369	LEU
1	F	385	ASP
1	F	389	SER
1	F	396	LEU
1	F	404	HIS
1	F	409	GLU
1	F	415	SER
1	F	423	THR
1	F	433	GLN
1	F	434	ARG
1	F	436	LYS
1	F	455	LEU
1	F	481	SER
1	F	497	SER
1	F	498	SER
1	F	499	THR
1	F	507	ARG
1	F	523	VAL
1	F	540	THR
1	F	543	GLN
1	F	553	SER
1	F	560	ASN
1	F	563	SER
1	F	574	GLU
1	F	580	GLN
1	F	583	SER
1	F	591	ILE
1	F	614	LEU
1	F	619	ARG
1	F	656	LYS
1	F	657	GLN
1	F	664	VAL
1	F	672	LEU
1	F	678	LYS
1	F	682	LYS
1	F	685	SER

Continued on next page...

Continued from previous page...

Mol	Chain	Res	Type
1	F	692	LEU
1	F	710	THR
1	F	715	HIS
1	F	716	THR
1	F	725	THR
1	F	726	THR
1	F	735	VAL
1	F	736	THR
1	F	743	ILE
1	F	746	LEU
1	F	751	LEU
1	F	755	LEU
1	F	756	ILE
1	F	762	LEU
1	F	770	LEU
1	F	788	ARG
1	F	789	SER
1	F	790	LEU
1	F	793	MET
1	F	811	ILE
1	F	813	LYS
1	F	828	VAL
1	F	832	LEU
1	F	847	LEU
1	F	848	ILE
1	F	878	LEU
1	F	891	ASP
1	F	892	VAL
1	F	918	ARG
1	F	922	GLU
1	F	924	ILE
1	F	933	MET
1	F	936	LEU
1	F	951	SER
1	F	962	GLU
1	F	964	LEU
1	F	978	LEU
1	F	983	LEU
1	F	987	LEU
1	F	988	SER
1	F	993	LYS
1	F	995	THR

Continued on next page...

Continued from previous page...

Mol	Chain	Res	Type
1	F	997	LEU
1	F	1003	THR
1	F	1008	ASP
1	F	1015	ILE
1	F	1018	THR
1	F	1023	THR
1	H	103	GLN
1	H	115	LEU
1	H	133	THR
1	H	135	THR
1	H	138	ILE
1	H	139	MET
1	H	143	ASP
1	H	145	ARG
1	H	150	GLU
1	H	154	LEU
1	H	168	GLU
1	H	171	SER
1	H	177	THR
1	H	184	MET
1	H	195	LYS
1	H	205	LEU
1	H	206	ARG
1	H	207	SER
1	H	209	ARG
1	H	220	LEU
1	H	231	THR
1	H	237	LEU
1	H	239	LEU
1	H	254	HIS
1	H	256	GLN
1	H	274	MET
1	H	281	THR
1	H	287	ILE
1	H	289	HIS
1	H	301	THR
1	H	314	VAL
1	H	319	GLU
1	H	324	GLN
1	H	331	LEU
1	H	335	MET
1	H	337	THR

Continued on next page...

Continued from previous page...

Mol	Chain	Res	Type
1	H	339	LEU
1	H	353	GLU
1	H	359	GLN
1	H	385	ASP
1	H	396	LEU
1	H	404	HIS
1	H	405	LYS
1	H	409	GLU
1	H	415	SER
1	H	431	THR
1	H	433	GLN
1	H	440	LYS
1	H	445	SER
1	H	462	LYS
1	H	498	SER
1	H	502	THR
1	H	503	ARG
1	H	518	LEU
1	H	537	LEU
1	H	540	THR
1	H	543	GLN
1	H	551	VAL
1	H	563	SER
1	H	573	GLN
1	H	574	GLU
1	H	583	SER
1	H	591	ILE
1	H	595	LEU
1	H	614	LEU
1	H	615	ASP
1	H	621	THR
1	H	647	ARG
1	H	650	SER
1	H	651	LEU
1	H	664	VAL
1	H	665	THR
1	H	685	SER
1	H	692	LEU
1	H	703	ARG
1	H	710	THR
1	H	713	ASN
1	H	735	VAL

Continued on next page...

Continued from previous page...

Mol	Chain	Res	Type
1	H	736	THR
1	H	745	ARG
1	H	746	LEU
1	H	755	LEU
1	H	756	ILE
1	H	762	LEU
1	H	770	LEU
1	H	789	SER
1	H	790	LEU
1	H	793	MET
1	H	818	GLU
1	H	827	LEU
1	H	828	VAL
1	H	832	LEU
1	H	847	LEU
1	H	878	LEU
1	H	890	TRP
1	H	892	VAL
1	H	896	LEU
1	H	900	LEU
1	H	901	LYS
1	H	906	THR
1	H	909	LEU
1	H	914	LEU
1	H	922	GLU
1	H	924	ILE
1	H	926	SER
1	H	934	ASN
1	H	936	LEU
1	H	937	ARG
1	H	959	ASN
1	H	962	GLU
1	H	964	LEU
1	H	988	SER
1	H	993	LYS
1	H	995	THR
1	H	997	LEU
1	H	1002	LEU
1	H	1003	THR
1	H	1008	ASP
1	H	1011	ASP
1	H	1012	ILE

Continued on next page...

Continued from previous page...

Mol	Chain	Res	Type
1	H	1015	ILE
1	H	1020	LYS
1	H	1023	THR
1	L	105	LEU
1	L	108	LEU
1	L	115	LEU
1	L	120	LEU
1	L	130	LEU
1	L	133	THR
1	L	138	ILE
1	L	139	MET
1	L	145	ARG
1	L	150	GLU
1	L	154	LEU
1	L	168	GLU
1	L	171	SER
1	L	184	MET
1	L	192	ARG
1	L	195	LYS
1	L	205	LEU
1	L	206	ARG
1	L	207	SER
1	L	209	ARG
1	L	231	THR
1	L	239	LEU
1	L	243	VAL
1	L	288	ARG
1	L	293	LEU
1	L	301	THR
1	L	303	ASP
1	L	314	VAL
1	L	319	GLU
1	L	331	LEU
1	L	335	MET
1	L	339	LEU
1	L	351	ARG
1	L	353	GLU
1	L	359	GLN
1	L	373	LYS
1	L	377	ARG
1	L	385	ASP
1	L	396	LEU

Continued on next page...

Continued from previous page...

Mol	Chain	Res	Type
1	L	404	HIS
1	L	405	LYS
1	L	409	GLU
1	L	411	GLU
1	L	431	THR
1	L	436	LYS
1	L	445	SER
1	L	455	LEU
1	L	481	SER
1	L	497	SER
1	L	498	SER
1	L	521	LEU
1	L	522	SER
1	L	532	GLU
1	L	536	SER
1	L	538	ARG
1	L	540	THR
1	L	543	GLN
1	L	560	ASN
1	L	561	LEU
1	L	563	SER
1	L	574	GLU
1	L	580	GLN
1	L	583	SER
1	L	591	ILE
1	L	595	LEU
1	L	621	THR
1	L	647	ARG
1	L	651	LEU
1	L	656	LYS
1	L	657	GLN
1	L	664	VAL
1	L	670	ASN
1	L	685	SER
1	L	692	LEU
1	L	710	THR
1	L	713	ASN
1	L	716	THR
1	L	725	THR
1	L	727	ASP
1	L	735	VAL
1	L	736	THR

Continued on next page...

Continued from previous page...

Mol	Chain	Res	Type
1	L	751	LEU
1	L	755	LEU
1	L	756	ILE
1	L	762	LEU
1	L	770	LEU
1	L	778	GLU
1	L	788	ARG
1	L	789	SER
1	L	790	LEU
1	L	791	LYS
1	L	793	MET
1	L	813	LYS
1	L	828	VAL
1	L	832	LEU
1	L	847	LEU
1	L	848	ILE
1	L	878	LEU
1	L	886	LEU
1	L	890	TRP
1	L	892	VAL
1	L	896	LEU
1	L	900	LEU
1	L	906	THR
1	L	909	LEU
1	L	914	LEU
1	L	922	GLU
1	L	924	ILE
1	L	926	SER
1	L	936	LEU
1	L	939	LEU
1	L	951	SER
1	L	956	TYR
1	L	964	LEU
1	L	965	LYS
1	L	975	GLU
1	L	986	LYS
1	L	988	SER
1	L	995	THR
1	L	996	LEU
1	L	997	LEU
1	L	1023	THR
1	N	96	GLU

Continued on next page...

Continued from previous page...

Mol	Chain	Res	Type
1	N	100	VAL
1	N	103	GLN
1	N	108	LEU
1	N	115	LEU
1	N	120	LEU
1	N	133	THR
1	N	138	ILE
1	N	139	MET
1	N	144	HIS
1	N	145	ARG
1	N	150	GLU
1	N	161	LEU
1	N	168	GLU
1	N	171	SER
1	N	177	THR
1	N	184	MET
1	N	195	LYS
1	N	205	LEU
1	N	207	SER
1	N	223	ILE
1	N	231	THR
1	N	239	LEU
1	N	240	HIS
1	N	274	MET
1	N	288	ARG
1	N	301	THR
1	N	303	ASP
1	N	314	VAL
1	N	319	GLU
1	N	324	GLN
1	N	334	LEU
1	N	335	MET
1	N	339	LEU
1	N	353	GLU
1	N	359	GLN
1	N	370	LEU
1	N	396	LEU
1	N	409	GLU
1	N	415	SER
1	N	416	MET
1	N	436	LYS
1	N	455	LEU

Continued on next page...

Continued from previous page...

Mol	Chain	Res	Type
1	N	463	GLU
1	N	475	ASN
1	N	480	ILE
1	N	497	SER
1	N	498	SER
1	N	502	THR
1	N	503	ARG
1	N	511	MET
1	N	518	LEU
1	N	523	VAL
1	N	535	GLN
1	N	536	SER
1	N	540	THR
1	N	541	THR
1	N	543	GLN
1	N	551	VAL
1	N	561	LEU
1	N	563	SER
1	N	580	GLN
1	N	583	SER
1	N	591	ILE
1	N	595	LEU
1	N	614	LEU
1	N	621	THR
1	N	647	ARG
1	N	650	SER
1	N	651	LEU
1	N	657	GLN
1	N	660	LYS
1	N	664	VAL
1	N	685	SER
1	N	692	LEU
1	N	725	THR
1	N	735	VAL
1	N	745	ARG
1	N	746	LEU
1	N	751	LEU
1	N	755	LEU
1	N	761	ASN
1	N	762	LEU
1	N	770	LEU
1	N	789	SER

Continued on next page...

Continued from previous page...

Mol	Chain	Res	Type
1	N	790	LEU
1	N	793	MET
1	N	794	ARG
1	N	795	LEU
1	N	802	SER
1	N	809	ASP
1	N	811	ILE
1	N	817	GLU
1	N	818	GLU
1	N	822	LEU
1	N	828	VAL
1	N	832	LEU
1	N	847	LEU
1	N	874	ARG
1	N	878	LEU
1	N	880	GLU
1	N	881	LEU
1	N	886	LEU
1	N	892	VAL
1	N	896	LEU
1	N	900	LEU
1	N	901	LYS
1	N	903	LEU
1	N	914	LEU
1	N	918	ARG
1	N	920	ARG
1	N	924	ILE
1	N	925	LYS
1	N	926	SER
1	N	931	LEU
1	N	936	LEU
1	N	937	ARG
1	N	947	HIS
1	N	955	LEU
1	N	964	LEU
1	N	965	LYS
1	N	975	GLU
1	N	989	GLN
1	N	990	VAL
1	N	993	LYS
1	N	996	LEU
1	N	1003	THR

Continued on next page...

Continued from previous page...

Mol	Chain	Res	Type
1	P	103	GLN
1	P	105	LEU
1	P	115	LEU
1	P	120	LEU
1	P	122	GLU
1	P	130	LEU
1	P	133	THR
1	P	138	ILE
1	P	139	MET
1	P	144	HIS
1	P	145	ARG
1	P	147	HIS
1	P	154	LEU
1	P	161	LEU
1	P	168	GLU
1	P	171	SER
1	P	177	THR
1	P	184	MET
1	P	192	ARG
1	P	195	LYS
1	P	205	LEU
1	P	206	ARG
1	P	207	SER
1	P	209	ARG
1	P	227	ILE
1	P	231	THR
1	P	239	LEU
1	P	243	VAL
1	P	274	MET
1	P	275	VAL
1	P	288	ARG
1	P	301	THR
1	P	314	VAL
1	P	319	GLU
1	P	330	CYS
1	P	334	LEU
1	P	335	MET
1	P	339	LEU
1	P	357	HIS
1	P	359	GLN
1	P	369	LEU
1	P	370	LEU

Continued on next page...

Continued from previous page...

Mol	Chain	Res	Type
1	P	377	ARG
1	P	396	LEU
1	P	404	HIS
1	P	409	GLU
1	P	410	PRO
1	P	435	LEU
1	P	436	LYS
1	P	455	LEU
1	P	463	GLU
1	P	498	SER
1	P	503	ARG
1	P	517	SER
1	P	521	LEU
1	P	540	THR
1	P	541	THR
1	P	543	GLN
1	P	551	VAL
1	P	561	LEU
1	P	563	SER
1	P	568	LYS
1	P	569	SER
1	P	580	GLN
1	P	583	SER
1	P	589	GLU
1	P	591	ILE
1	P	595	LEU
1	P	614	LEU
1	P	660	LYS
1	P	662	LEU
1	P	664	VAL
1	P	665	THR
1	P	672	LEU
1	P	674	LYS
1	P	677	ILE
1	P	682	LYS
1	P	685	SER
1	P	689	ASN
1	P	692	LEU
1	P	695	LYS
1	P	703	ARG
1	P	710	THR
1	P	725	THR

Continued on next page...

Continued from previous page...

Mol	Chain	Res	Type
1	P	735	VAL
1	P	746	LEU
1	P	751	LEU
1	P	755	LEU
1	P	756	ILE
1	P	762	LEU
1	P	770	LEU
1	P	788	ARG
1	P	789	SER
1	P	790	LEU
1	P	793	MET
1	P	802	SER
1	P	813	LYS
1	P	827	LEU
1	P	828	VAL
1	P	832	LEU
1	P	847	LEU
1	P	848	ILE
1	P	859	TYR
1	P	861	GLU
1	P	874	ARG
1	P	878	LEU
1	P	892	VAL
1	P	896	LEU
1	P	901	LYS
1	P	906	THR
1	P	909	LEU
1	P	914	LEU
1	P	922	GLU
1	P	924	ILE
1	P	926	SER
1	P	934	ASN
1	P	936	LEU
1	P	951	SER
1	P	955	LEU
1	P	964	LEU
1	P	975	GLU
1	P	980	ASP
1	P	988	SER
1	P	993	LYS
1	P	995	THR
1	P	996	LEU

Continued on next page...

Continued from previous page...

Mol	Chain	Res	Type
1	P	997	LEU
1	P	1003	THR

Some sidechains can be flipped to improve hydrogen bonding and reduce clashes. All (25) such sidechains are listed below:

Mol	Chain	Res	Type
1	K	289	HIS
1	K	531	GLN
1	B	268	ASN
1	B	552	ASN
1	B	998	GLN
1	D	364	GLN
1	D	573	GLN
1	D	747	HIS
1	H	433	GLN
1	H	715	HIS
1	H	739	GLN
1	H	740	ASN
1	L	324	GLN
1	L	359	GLN
1	N	269	HIS
1	N	657	GLN
1	N	675	GLN
1	N	693	HIS
1	N	761	ASN
1	P	317	GLN
1	P	324	GLN
1	P	359	GLN
1	P	740	ASN
1	P	941	GLN
1	P	947	HIS

5.3.3 RNA [i](#)

There are no RNA molecules in this entry.

5.4 Non-standard residues in protein, DNA, RNA chains [i](#)

7 non-standard protein/DNA/RNA residues are modelled in this entry.

In the following table, the Counts columns list the number of bonds (or angles) for which Mogul

statistics could be retrieved, the number of bonds (or angles) that are observed in the model and the number of bonds (or angles) that are defined in the Chemical Component Dictionary. The Link column lists molecule types, if any, to which the group is linked. The Z score for a bond length (or angle) is the number of standard deviations the observed value is removed from the expected value. A bond length (or angle) with $|Z| > 2$ is considered an outlier worth inspection. RMSZ is the root-mean-square of all Z scores of the bond lengths (or angles).

Mol	Type	Chain	Res	Link	Bond lengths			Bond angles		
					Counts	RMSZ	# $ Z > 2$	Counts	RMSZ	# $ Z > 2$
1	SEP	B	533	1	9,9,10	1.64	2 (22%)	9,12,14	1.91	2 (22%)
1	SEP	D	533	1	9,9,10	1.56	2 (22%)	9,12,14	1.78	2 (22%)
1	SEP	F	533	1	9,9,10	1.47	1 (11%)	9,12,14	1.54	2 (22%)
1	SEP	H	533	1	9,9,10	1.57	2 (22%)	9,12,14	1.49	1 (11%)
1	SEP	K	533	1	9,9,10	1.47	1 (11%)	9,12,14	1.71	2 (22%)
1	SEP	L	533	1	9,9,10	1.47	1 (11%)	9,12,14	1.55	1 (11%)
1	SEP	N	533	1	5,5,10	1.18	1 (20%)	2,5,14	1.17	0

In the following table, the Chirals column lists the number of chiral outliers, the number of chiral centers analysed, the number of these observed in the model and the number defined in the Chemical Component Dictionary. Similar counts are reported in the Torsion and Rings columns. '-' means no outliers of that kind were identified.

Mol	Type	Chain	Res	Link	Chirals	Torsions	Rings
1	SEP	B	533	1	-	0/5/8/10	0/0/0/0
1	SEP	D	533	1	-	0/5/8/10	0/0/0/0
1	SEP	F	533	1	-	0/5/8/10	0/0/0/0
1	SEP	H	533	1	-	0/5/8/10	0/0/0/0
1	SEP	K	533	1	-	0/5/8/10	0/0/0/0
1	SEP	L	533	1	-	0/5/8/10	0/0/0/0
1	SEP	N	533	1	-	0/2/4/10	0/0/0/0

All (10) bond length outliers are listed below:

Mol	Chain	Res	Type	Atoms	Z	Observed(Å)	Ideal(Å)
1	D	533	SEP	CA-C	2.20	1.53	1.50
1	H	533	SEP	CA-C	2.26	1.53	1.50
1	N	533	SEP	CA-C	2.40	1.53	1.50
1	B	533	SEP	CA-C	2.53	1.53	1.50
1	F	533	SEP	P-O1P	3.15	1.61	1.50
1	K	533	SEP	P-O1P	3.15	1.61	1.50
1	D	533	SEP	P-O1P	3.18	1.61	1.50
1	B	533	SEP	P-O1P	3.18	1.61	1.50
1	L	533	SEP	P-O1P	3.21	1.61	1.50

Continued on next page...

Continued from previous page...

Mol	Chain	Res	Type	Atoms	Z	Observed(Å)	Ideal(Å)
1	H	533	SEP	P-O1P	3.21	1.61	1.50

All (10) bond angle outliers are listed below:

Mol	Chain	Res	Type	Atoms	Z	Observed(°)	Ideal(°)
1	B	533	SEP	P-OG-CB	-3.91	107.54	118.30
1	H	533	SEP	P-OG-CB	-3.22	109.42	118.30
1	K	533	SEP	P-OG-CB	-3.14	109.63	118.30
1	D	533	SEP	P-OG-CB	-2.83	110.51	118.30
1	F	533	SEP	P-OG-CB	-2.57	111.23	118.30
1	F	533	SEP	OG-CB-CA	2.80	110.92	108.17
1	L	533	SEP	OG-CB-CA	3.17	111.29	108.17
1	K	533	SEP	OG-CB-CA	3.27	111.39	108.17
1	B	533	SEP	OG-CB-CA	3.60	111.72	108.17
1	D	533	SEP	OG-CB-CA	3.71	111.83	108.17

There are no chirality outliers.

There are no torsion outliers.

There are no ring outliers.

4 monomers are involved in 7 short contacts:

Mol	Chain	Res	Type	Clashes	Symm-Clashes
1	B	533	SEP	3	0
1	F	533	SEP	1	0
1	H	533	SEP	2	0
1	K	533	SEP	1	0

5.5 Carbohydrates [i](#)

There are no carbohydrates in this entry.

5.6 Ligand geometry [i](#)

10 ligands are modelled in this entry.

In the following table, the Counts columns list the number of bonds (or angles) for which Mogul statistics could be retrieved, the number of bonds (or angles) that are observed in the model and the number of bonds (or angles) that are defined in the Chemical Component Dictionary. The Link column lists molecule types, if any, to which the group is linked. The Z score for a bond length (or angle) is the number of standard deviations the observed value is removed from the

expected value. A bond length (or angle) with $|Z| > 2$ is considered an outlier worth inspection. RMSZ is the root-mean-square of all Z scores of the bond lengths (or angles).

Mol	Type	Chain	Res	Link	Bond lengths			Bond angles		
					Counts	RMSZ	# $ Z > 2$	Counts	RMSZ	# $ Z > 2$
2	ADP	B	1101	-	25,29,29	1.03	1 (4%)	25,45,45	1.73	3 (12%)
3	SO4	B	1102	-	4,4,4	0.16	0	6,6,6	0.08	0
2	ADP	D	1101	-	25,29,29	1.04	1 (4%)	25,45,45	1.74	4 (16%)
2	ADP	F	1101	-	25,29,29	1.03	1 (4%)	25,45,45	1.72	3 (12%)
2	ADP	H	1101	-	25,29,29	1.05	1 (4%)	25,45,45	1.67	3 (12%)
2	ADP	K	1101	-	25,29,29	1.03	1 (4%)	25,45,45	1.72	3 (12%)
2	ADP	L	1101	-	25,29,29	1.10	1 (4%)	25,45,45	1.58	3 (12%)
2	ADP	N	1101	-	25,29,29	1.05	1 (4%)	25,45,45	1.65	3 (12%)
3	SO4	N	1102	-	4,4,4	0.16	0	6,6,6	0.08	0
2	ADP	P	1101	-	25,29,29	1.05	1 (4%)	25,45,45	1.65	3 (12%)

In the following table, the Chirals column lists the number of chiral outliers, the number of chiral centers analysed, the number of these observed in the model and the number defined in the Chemical Component Dictionary. Similar counts are reported in the Torsion and Rings columns. '-' means no outliers of that kind were identified.

Mol	Type	Chain	Res	Link	Chirals	Torsions	Rings
2	ADP	B	1101	-	-	0/12/32/32	0/3/3/3
3	SO4	B	1102	-	-	0/0/0/0	0/0/0/0
2	ADP	D	1101	-	-	0/12/32/32	0/3/3/3
2	ADP	F	1101	-	-	0/12/32/32	0/3/3/3
2	ADP	H	1101	-	-	0/12/32/32	0/3/3/3
2	ADP	K	1101	-	-	0/12/32/32	0/3/3/3
2	ADP	L	1101	-	-	0/12/32/32	0/3/3/3
2	ADP	N	1101	-	-	0/12/32/32	0/3/3/3
3	SO4	N	1102	-	-	0/0/0/0	0/0/0/0
2	ADP	P	1101	-	-	0/12/32/32	0/3/3/3

All (8) bond length outliers are listed below:

Mol	Chain	Res	Type	Atoms	Z	Observed(Å)	Ideal(Å)
2	F	1101	ADP	C5-C4	3.05	1.47	1.40
2	K	1101	ADP	C5-C4	3.10	1.47	1.40
2	H	1101	ADP	C5-C4	3.12	1.47	1.40
2	B	1101	ADP	C5-C4	3.13	1.47	1.40
2	D	1101	ADP	C5-C4	3.17	1.47	1.40
2	N	1101	ADP	C5-C4	3.18	1.47	1.40
2	P	1101	ADP	C5-C4	3.20	1.47	1.40

Continued on next page...

Continued from previous page...

Mol	Chain	Res	Type	Atoms	Z	Observed(Å)	Ideal(Å)
2	L	1101	ADP	C5-C4	3.33	1.48	1.40

All (25) bond angle outliers are listed below:

Mol	Chain	Res	Type	Atoms	Z	Observed(°)	Ideal(°)
2	K	1101	ADP	N3-C2-N1	-5.90	123.81	128.86
2	F	1101	ADP	N3-C2-N1	-5.86	123.85	128.86
2	N	1101	ADP	N3-C2-N1	-5.82	123.88	128.86
2	D	1101	ADP	N3-C2-N1	-5.79	123.91	128.86
2	H	1101	ADP	N3-C2-N1	-5.78	123.92	128.86
2	B	1101	ADP	N3-C2-N1	-5.75	123.95	128.86
2	P	1101	ADP	N3-C2-N1	-5.35	124.28	128.86
2	L	1101	ADP	N3-C2-N1	-5.00	124.58	128.86
2	K	1101	ADP	PA-O3A-PB	-3.86	119.64	132.63
2	B	1101	ADP	PA-O3A-PB	-3.40	121.21	132.63
2	P	1101	ADP	PA-O3A-PB	-3.30	121.53	132.63
2	F	1101	ADP	PA-O3A-PB	-3.25	121.69	132.63
2	D	1101	ADP	PA-O3A-PB	-3.24	121.75	132.63
2	L	1101	ADP	PA-O3A-PB	-3.14	122.06	132.63
2	H	1101	ADP	PA-O3A-PB	-2.89	122.90	132.63
2	K	1101	ADP	C4-C5-N7	-2.84	106.67	109.41
2	P	1101	ADP	C4-C5-N7	-2.84	106.67	109.41
2	N	1101	ADP	C4-C5-N7	-2.73	106.77	109.41
2	B	1101	ADP	C4-C5-N7	-2.71	106.79	109.41
2	F	1101	ADP	C4-C5-N7	-2.69	106.81	109.41
2	D	1101	ADP	C4-C5-N7	-2.67	106.83	109.41
2	H	1101	ADP	C4-C5-N7	-2.65	106.85	109.41
2	L	1101	ADP	C4-C5-N7	-2.61	106.89	109.41
2	N	1101	ADP	PA-O3A-PB	-2.05	125.74	132.63
2	D	1101	ADP	C4'-O4'-C1'	2.05	111.97	109.83

There are no chirality outliers.

There are no torsion outliers.

There are no ring outliers.

6 monomers are involved in 8 short contacts:

Mol	Chain	Res	Type	Clashes	Symm-Clashes
2	B	1101	ADP	1	0
2	D	1101	ADP	1	0
2	F	1101	ADP	1	0
2	K	1101	ADP	2	0

Continued on next page...

Continued from previous page...

Mol	Chain	Res	Type	Clashes	Symm-Clashes
2	L	1101	ADP	1	0
2	P	1101	ADP	2	0

5.7 Other polymers [i](#)

There are no such residues in this entry.

5.8 Polymer linkage issues [i](#)

There are no chain breaks in this entry.

6 Fit of model and data

6.1 Protein, DNA and RNA chains

In the following table, the column labelled ‘#RSRZ > 2’ contains the number (and percentage) of RSRZ outliers, followed by percent RSRZ outliers for the chain as percentile scores relative to all X-ray entries and entries of similar resolution. The OWAB column contains the minimum, median, 95th percentile and maximum values of the occupancy-weighted average B-factor per residue. The column labelled ‘Q < 0.9’ lists the number of (and percentage) of residues with an average occupancy less than 0.9.

Mol	Chain	Analysed	<RSRZ>	#RSRZ>2	OWAB(Å ²)	Q<0.9
1	B	902/1024 (88%)	-0.01	18 (1%) 65 51	3, 15, 68, 143	0
1	D	899/1024 (87%)	0.03	30 (3%) 46 30	3, 22, 71, 148	0
1	F	898/1024 (87%)	0.02	27 (3%) 50 35	2, 19, 65, 130	0
1	H	897/1024 (87%)	0.09	34 (3%) 40 26	4, 17, 61, 155	0
1	K	903/1024 (88%)	0.02	24 (2%) 54 40	4, 19, 66, 152	0
1	L	892/1024 (87%)	0.00	23 (2%) 56 41	2, 15, 66, 146	0
1	N	881/1024 (86%)	0.33	58 (6%) 18 10	4, 41, 106, 178	0
1	P	866/1024 (84%)	0.66	112 (12%) 3 2	5, 53, 156, 254	0
All	All	7138/8192 (87%)	0.14	326 (4%) 32 20	2, 23, 92, 254	0

All (326) RSRZ outliers are listed below:

Mol	Chain	Res	Type	RSRZ
1	H	1007	PHE	7.2
1	P	987	LEU	7.0
1	N	979	PRO	6.7
1	N	980	ASP	6.6
1	P	984	VAL	6.3
1	P	975	GLU	6.2
1	N	1021	LEU	6.2
1	N	978	LEU	6.1
1	H	712	LYS	6.0
1	F	1005	TRP	5.8
1	P	980	ASP	5.7
1	N	961	PHE	5.7
1	N	1005	TRP	5.5
1	P	567	SER	5.4
1	B	1007	PHE	5.3
1	H	1006	GLU	5.3

Continued on next page...

Continued from previous page...

Mol	Chain	Res	Type	RSRZ
1	P	988	SER	5.2
1	P	954	TRP	5.2
1	P	974	THR	5.1
1	P	989	GLN	5.0
1	P	979	PRO	5.0
1	P	958	MET	4.9
1	P	957	PHE	4.8
1	P	985	ARG	4.8
1	P	1002	LEU	4.7
1	H	1011	ASP	4.5
1	P	932	GLU	4.5
1	P	955	LEU	4.5
1	N	712	LYS	4.5
1	P	1004	GLY	4.5
1	N	957	PHE	4.5
1	K	1005	TRP	4.5
1	H	1015	ILE	4.5
1	N	1015	ILE	4.5
1	P	670	ASN	4.5
1	D	383	SER	4.4
1	P	1005	TRP	4.4
1	P	925	LYS	4.3
1	K	1021	LEU	4.3
1	P	973	SER	4.3
1	F	352	GLN	4.3
1	P	863	ASP	4.3
1	D	1007	PHE	4.2
1	P	1021	LEU	4.2
1	P	357	HIS	4.1
1	P	962	GLU	4.1
1	P	672	LEU	4.0
1	F	1006	GLU	4.0
1	K	1006	GLU	4.0
1	B	384	GLY	4.0
1	P	981	ALA	4.0
1	P	992	SER	3.9
1	P	929	GLU	3.9
1	F	1007	PHE	3.9
1	P	960	VAL	3.9
1	P	982	ALA	3.9
1	D	151	GLN	3.9
1	P	679	TYR	3.9

Continued on next page...

Continued from previous page...

Mol	Chain	Res	Type	RSRZ
1	N	929	GLU	3.9
1	K	1015	ILE	3.9
1	N	987	LEU	3.8
1	N	386	PHE	3.8
1	L	987	LEU	3.8
1	P	704	LEU	3.8
1	F	383	SER	3.8
1	H	973	SER	3.8
1	N	1002	LEU	3.7
1	F	983	LEU	3.7
1	P	976	GLU	3.7
1	P	945	ALA	3.7
1	F	1015	ILE	3.7
1	N	976	GLU	3.6
1	L	984	VAL	3.6
1	N	975	GLU	3.6
1	N	952	ASP	3.6
1	P	931	LEU	3.6
1	L	1005	TRP	3.6
1	D	352	GLN	3.6
1	L	378	TYR	3.5
1	N	378	TYR	3.5
1	L	977	PHE	3.5
1	K	983	LEU	3.5
1	B	1005	TRP	3.5
1	D	97	ASP	3.4
1	P	927	LEU	3.4
1	P	331	LEU	3.4
1	H	763	LYS	3.4
1	B	524	THR	3.4
1	F	386	PHE	3.4
1	N	721	ALA	3.3
1	P	141	LYS	3.3
1	L	956	TYR	3.3
1	P	991	LEU	3.3
1	P	669	ILE	3.3
1	P	959	ASN	3.3
1	P	961	PHE	3.3
1	P	685	SER	3.3
1	N	679	TYR	3.3
1	P	983	LEU	3.3
1	P	935	PRO	3.3

Continued on next page...

Continued from previous page...

Mol	Chain	Res	Type	RSRZ
1	P	1003	THR	3.2
1	F	977	PHE	3.2
1	N	535	GLN	3.2
1	K	1023	THR	3.2
1	P	934	ASN	3.1
1	D	323	ALA	3.1
1	P	928	GLY	3.1
1	P	802	SER	3.1
1	L	431	THR	3.1
1	H	381	GLY	3.1
1	D	1015	ILE	3.1
1	H	1005	TRP	3.1
1	F	151	GLN	3.0
1	N	433	GLN	3.0
1	N	821	ASP	3.0
1	P	820	CYS	3.0
1	D	327	GLU	3.0
1	N	1000	VAL	3.0
1	P	321	LEU	3.0
1	P	965	LYS	3.0
1	N	977	PHE	3.0
1	N	958	MET	3.0
1	P	926	SER	3.0
1	P	951	SER	3.0
1	K	386	PHE	3.0
1	P	924	ILE	3.0
1	F	1023	THR	3.0
1	F	378	TYR	2.9
1	H	388	ARG	2.9
1	L	983	LEU	2.9
1	P	152	LEU	2.9
1	B	527	PRO	2.9
1	B	1023	THR	2.9
1	P	675	GLN	2.9
1	H	679	TYR	2.9
1	P	708	LEU	2.9
1	B	378	TYR	2.9
1	D	431	THR	2.9
1	L	412	HIS	2.9
1	P	783	LEU	2.9
1	H	378	TYR	2.8
1	B	352	GLN	2.8

Continued on next page...

Continued from previous page...

Mol	Chain	Res	Type	RSRZ
1	L	386	PHE	2.8
1	P	688	THR	2.8
1	N	371	ILE	2.8
1	K	981	ALA	2.8
1	D	382	ALA	2.8
1	N	513	TYR	2.8
1	H	977	PHE	2.8
1	L	424	ILE	2.8
1	P	356	ALA	2.8
1	N	388	ARG	2.8
1	D	763	LYS	2.8
1	P	464	PRO	2.8
1	H	951	SER	2.8
1	K	380	GLY	2.8
1	N	802	SER	2.8
1	L	1023	THR	2.8
1	N	762	LEU	2.7
1	L	1022	VAL	2.7
1	D	1023	THR	2.7
1	F	353	GLU	2.7
1	K	1016	LYS	2.7
1	P	732	ILE	2.7
1	B	529	TRP	2.7
1	P	615	ASP	2.7
1	B	353	GLU	2.7
1	P	977	PHE	2.7
1	D	388	ARG	2.7
1	H	1004	GLY	2.7
1	F	1021	LEU	2.7
1	N	984	VAL	2.7
1	B	995	THR	2.7
1	B	411	GLU	2.7
1	D	353	GLU	2.7
1	P	386	PHE	2.6
1	F	389	SER	2.6
1	P	389	SER	2.6
1	P	455	LEU	2.6
1	P	1000	VAL	2.6
1	B	981	ALA	2.6
1	L	980	ASP	2.6
1	L	979	PRO	2.6
1	P	972	PHE	2.6

Continued on next page...

Continued from previous page...

Mol	Chain	Res	Type	RSRZ
1	P	696	ARG	2.6
1	N	621	THR	2.6
1	P	1019	PHE	2.6
1	H	1001	LYS	2.6
1	P	673	ASN	2.6
1	P	684	PHE	2.6
1	K	979	PRO	2.6
1	D	976	GLU	2.6
1	P	946	GLY	2.6
1	K	1022	VAL	2.6
1	F	994	LEU	2.6
1	K	1007	PHE	2.5
1	P	1001	LYS	2.5
1	N	713	ASN	2.5
1	N	418	GLU	2.5
1	N	988	SER	2.5
1	P	947	HIS	2.5
1	P	747	HIS	2.5
1	F	1004	GLY	2.5
1	H	1008	ASP	2.5
1	H	1024	ALA	2.5
1	K	607	SER	2.5
1	L	1004	GLY	2.5
1	P	990	VAL	2.5
1	K	605	CYS	2.4
1	D	523	VAL	2.4
1	P	746	LEU	2.4
1	P	668	ASP	2.4
1	N	763	LYS	2.4
1	P	762	LEU	2.4
1	D	384	GLY	2.4
1	H	1022	VAL	2.4
1	D	414	SER	2.4
1	D	319	GLU	2.4
1	N	670	ASN	2.4
1	N	761	ASN	2.4
1	F	993	LYS	2.4
1	K	606	ALA	2.4
1	D	1006	GLU	2.4
1	N	617	TYR	2.4
1	P	890	TRP	2.4
1	N	822	LEU	2.4

Continued on next page...

Continued from previous page...

Mol	Chain	Res	Type	RSRZ
1	P	689	ASN	2.4
1	N	804	ILE	2.4
1	K	322	TRP	2.4
1	P	700	MET	2.4
1	B	994	LEU	2.4
1	P	379	ARG	2.3
1	L	976	GLU	2.3
1	D	1005	TRP	2.3
1	B	431	THR	2.3
1	P	495	CYS	2.3
1	D	302	GLU	2.3
1	F	380	GLY	2.3
1	H	781	LYS	2.3
1	N	925	LYS	2.3
1	P	950	SER	2.3
1	P	683	ILE	2.3
1	K	381	GLY	2.3
1	H	980	ASP	2.3
1	H	386	PHE	2.3
1	H	1012	ILE	2.3
1	P	674	LYS	2.3
1	K	226	PHE	2.3
1	F	1010	TYR	2.3
1	L	679	TYR	2.3
1	D	521	LEU	2.2
1	F	978	LEU	2.2
1	N	710	THR	2.2
1	N	430	TYR	2.2
1	F	965	LYS	2.2
1	N	810	TYR	2.2
1	P	543	GLN	2.2
1	N	927	LEU	2.2
1	P	936	LEU	2.2
1	K	617	TYR	2.2
1	P	745	ARG	2.2
1	P	993	LYS	2.2
1	L	975	GLU	2.2
1	K	352	GLN	2.2
1	F	382	ALA	2.2
1	H	379	ARG	2.2
1	N	354	PHE	2.2
1	P	317	GLN	2.2

Continued on next page...

Continued from previous page...

Mol	Chain	Res	Type	RSRZ
1	L	98	LEU	2.2
1	N	981	ALA	2.2
1	B	980	ASP	2.2
1	N	1003	THR	2.2
1	D	620	ALA	2.2
1	P	686	SER	2.2
1	H	269	HIS	2.2
1	P	788	ARG	2.2
1	H	762	LEU	2.1
1	B	531	GLN	2.1
1	P	355	GLN	2.1
1	H	1009	ASP	2.1
1	P	682	LYS	2.1
1	H	1002	LEU	2.1
1	P	93	VAL	2.1
1	D	980	ASP	2.1
1	P	933	MET	2.1
1	D	489	ASN	2.1
1	D	977	PHE	2.1
1	L	420	VAL	2.1
1	P	325	ILE	2.1
1	L	357	HIS	2.1
1	L	656	LYS	2.1
1	D	966	GLN	2.1
1	P	996	LEU	2.1
1	F	617	TYR	2.1
1	N	764	ASN	2.1
1	N	98	LEU	2.1
1	P	764	ASN	2.1
1	N	806	GLU	2.1
1	K	1012	ILE	2.1
1	H	978	LEU	2.1
1	P	378	TYR	2.1
1	F	384	GLY	2.1
1	P	786	GLY	2.1
1	N	999	GLU	2.1
1	D	351	ARG	2.1
1	F	351	ARG	2.1
1	H	1000	VAL	2.1
1	N	619	ARG	2.1
1	H	713	ASN	2.1
1	K	987	LEU	2.1

Continued on next page...

Continued from previous page...

Mol	Chain	Res	Type	RSRZ
1	K	1011	ASP	2.1
1	N	653	PHE	2.1
1	H	1023	THR	2.1
1	P	952	ASP	2.1
1	D	965	LYS	2.0
1	H	976	GLU	2.0
1	P	465	GLU	2.0
1	P	514	GLN	2.0
1	P	790	LEU	2.0
1	N	736	THR	2.0
1	B	1016	LYS	2.0
1	N	538	ARG	2.0
1	P	978	LEU	2.0
1	F	388	ARG	2.0
1	N	991	LEU	2.0
1	H	617	TYR	2.0

6.2 Non-standard residues in protein, DNA, RNA chains [i](#)

In the following table, the Atoms column lists the number of modelled atoms in the group and the number defined in the chemical component dictionary. The B-factors column lists the minimum, median, 95th percentile and maximum values of B factors of atoms in the group. The column labelled 'Q< 0.9' lists the number of atoms with occupancy less than 0.9.

Mol	Type	Chain	Res	Atoms	RSCC	RSR	B-factors(Å ²)	Q<0.9
1	SEP	N	533	6/11	0.77	0.25	6,7,16,17	0
1	SEP	B	533	10/11	0.83	0.21	54,54,54,54	0
1	SEP	D	533	10/11	0.83	0.26	59,59,59,59	0
1	SEP	F	533	10/11	0.89	0.17	69,69,69,69	0
1	SEP	L	533	10/11	0.90	0.16	69,69,69,69	0
1	SEP	K	533	10/11	0.92	0.15	67,67,67,68	0
1	SEP	H	533	10/11	0.92	0.16	45,46,46,46	0

6.3 Carbohydrates [i](#)

There are no carbohydrates in this entry.

6.4 Ligands [i](#)

In the following table, the Atoms column lists the number of modelled atoms in the group and the number defined in the chemical component dictionary. The B-factors column lists the minimum,

median, 95th percentile and maximum values of B factors of atoms in the group. The column labelled 'Q< 0.9' lists the number of atoms with occupancy less than 0.9.

Mol	Type	Chain	Res	Atoms	RSCC	RSR	B-factors(\AA^2)	Q<0.9
3	SO4	N	1102	5/5	0.76	0.34	79,86,87,116	0
3	SO4	B	1102	5/5	0.81	0.32	81,93,103,106	0
2	ADP	D	1101	27/27	0.94	0.21	3,4,9,10	0
2	ADP	N	1101	27/27	0.94	0.26	9,20,28,39	0
2	ADP	B	1101	27/27	0.94	0.22	4,5,7,7	0
2	ADP	F	1101	27/27	0.95	0.21	2,2,3,3	0
2	ADP	P	1101	27/27	0.95	0.23	8,18,28,35	0
2	ADP	L	1101	27/27	0.95	0.24	2,4,6,7	0
2	ADP	K	1101	27/27	0.96	0.20	6,10,15,17	0
2	ADP	H	1101	27/27	0.96	0.26	4,5,6,8	0

6.5 Other polymers [\(i\)](#)

There are no such residues in this entry.