



Full wwPDB X-ray Structure Validation Report ⓘ

Oct 31, 2021 – 09:15 AM EDT

PDB ID : 3KYG
Title : Crystal structure of VCA0042 (L135R) complexed with c-di-GMP
Authors : Ryu, K.S.; Ko, J.; Kim, H.; Choi, B.S.
Deposited on : 2009-12-06
Resolution : 2.10 Å(reported)

This is a Full wwPDB X-ray Structure Validation Report for a publicly released PDB entry.

We welcome your comments at validation@mail.wwpdb.org

A user guide is available at

<https://www.wwpdb.org/validation/2017/XrayValidationReportHelp>

with specific help available everywhere you see the ⓘ symbol.

The following versions of software and data (see [references ⓘ](#)) were used in the production of this report:

MolProbity : 4.02b-467
Mogul : 1.8.5 (274361), CSD as541be (2020)
Xtriage (Phenix) : 1.13
EDS : 2.23.2
buster-report : 1.1.7 (2018)
Percentile statistics : 20191225.v01 (using entries in the PDB archive December 25th 2019)
Refmac : 5.8.0158
CCP4 : 7.0.044 (Gargrove)
Ideal geometry (proteins) : Engh & Huber (2001)
Ideal geometry (DNA, RNA) : Parkinson et al. (1996)
Validation Pipeline (wwPDB-VP) : 2.23.2

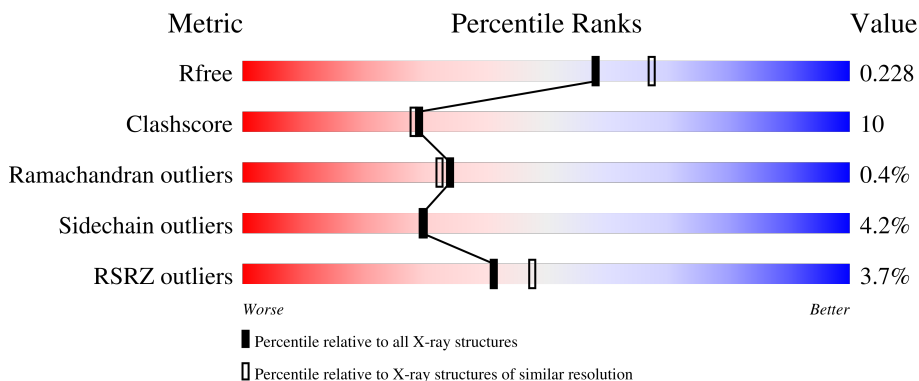
1 Overall quality at a glance

The following experimental techniques were used to determine the structure:

X-RAY DIFFRACTION

The reported resolution of this entry is 2.10 Å.

Percentile scores (ranging between 0-100) for global validation metrics of the entry are shown in the following graphic. The table shows the number of entries on which the scores are based.



Metric	Whole archive (#Entries)	Similar resolution (#Entries, resolution range(Å))
R_{free}	130704	5197 (2.10-2.10)
Clashscore	141614	5710 (2.10-2.10)
Ramachandran outliers	138981	5647 (2.10-2.10)
Sidechain outliers	138945	5648 (2.10-2.10)
RSRZ outliers	127900	5083 (2.10-2.10)

The table below summarises the geometric issues observed across the polymeric chains and their fit to the electron density. The red, orange, yellow and green segments of the lower bar indicate the fraction of residues that contain outliers for ≥ 3 , 2, 1 and 0 types of geometric quality criteria respectively. A grey segment represents the fraction of residues that are not modelled. The numeric value for each fraction is indicated below the corresponding segment, with a dot representing fractions $\leq 5\%$. The upper red bar (where present) indicates the fraction of residues that have poor fit to the electron density. The numeric value is given above the bar.

Mol	Chain	Length	Quality of chain
1	A	227	 3% 81% 17% .
1	B	227	 4% 79% 19% .

2 Entry composition [i](#)

There are 3 unique types of molecules in this entry. The entry contains 4064 atoms, of which 0 are hydrogens and 0 are deuteriums.

In the tables below, the ZeroOcc column contains the number of atoms modelled with zero occupancy, the AltConf column contains the number of residues with at least one atom in alternate conformation and the Trace column contains the number of residues modelled with at most 2 atoms.

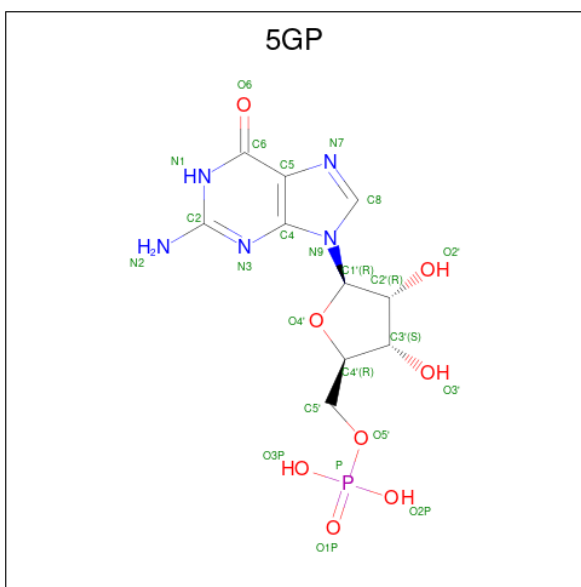
- Molecule 1 is a protein called Putative uncharacterized protein VCA0042.

Mol	Chain	Residues	Atoms					ZeroOcc	AltConf	Trace
			Total	C	N	O	S			
1	A	227	Total 1803	C 1144	N 319	O 330	S 10	0	0	0
1	B	227	Total 1803	C 1144	N 319	O 330	S 10	0	0	0

There are 2 discrepancies between the modelled and reference sequences:

Chain	Residue	Modelled	Actual	Comment	Reference
A	135	ARG	LEU	engineered mutation	UNP Q9KNC3
B	135	ARG	LEU	engineered mutation	UNP Q9KNC3

- Molecule 2 is GUANOSINE-5'-MONOPHOSPHATE (three-letter code: 5GP) (formula: $C_{10}H_{14}N_5O_8P$).



Mol	Chain	Residues	Atoms					ZeroOcc	AltConf
			Total	C	N	O	P		
2	A	1	Total 23	C 10	N 5	O 7	P 1	0	0

Continued on next page...

Continued from previous page...

Mol	Chain	Residues	Atoms					ZeroOcc	AltConf
2	A	1	Total	C	N	O	P	0	0
			23	10	5	7	1		
2	A	1	Total	C	N	O	P	0	0
			23	10	5	7	1		
2	A	1	Total	C	N	O	P	0	0
			23	10	5	7	1		
2	B	1	Total	C	N	O	P	0	0
			23	10	5	7	1		
2	B	1	Total	C	N	O	P	0	0
			23	10	5	7	1		
2	B	1	Total	C	N	O	P	0	0
			23	10	5	7	1		

- Molecule 3 is water.

Mol	Chain	Residues	Atoms		ZeroOcc	AltConf
3	A	139	Total	O	0	0
			139	139		
3	B	135	Total	O	0	0
			135	135		

4 Data and refinement statistics

Property	Value	Source
Space group	P 21 21 21	Depositor
Cell constants a, b, c, α , β , γ	63.17Å 67.23Å 128.60Å 90.00° 90.00° 90.00°	Depositor
Resolution (Å)	31.37 – 2.10 46.47 – 2.10	Depositor EDS
% Data completeness (in resolution range)	98.2 (31.37-2.10) 97.8 (46.47-2.10)	Depositor EDS
R_{merge}	(Not available)	Depositor
R_{sym}	(Not available)	Depositor
$\langle I/\sigma(I) \rangle$ ¹	5.85 (at 2.10Å)	Xtrriage
Refinement program	CNS 1.2	Depositor
R, R_{free}	0.201 , 0.240 0.192 , 0.228	Depositor DCC
R_{free} test set	1595 reflections (4.86%)	wwPDB-VP
Wilson B-factor (Å ²)	23.4	Xtrriage
Anisotropy	0.095	Xtrriage
Bulk solvent k_{sol} (e/Å ³), B_{sol} (Å ²)	0.32 , 51.2	EDS
L-test for twinning ²	$\langle L \rangle = 0.49$, $\langle L^2 \rangle = 0.32$	Xtrriage
Estimated twinning fraction	No twinning to report.	Xtrriage
F_o, F_c correlation	0.94	EDS
Total number of atoms	4064	wwPDB-VP
Average B, all atoms (Å ²)	28.0	wwPDB-VP

Xtrriage's analysis on translational NCS is as follows: *The largest off-origin peak in the Patterson function is 5.54% of the height of the origin peak. No significant pseudotranslation is detected.*

¹Intensities estimated from amplitudes.

²Theoretical values of $\langle |L| \rangle$, $\langle L^2 \rangle$ for acentric reflections are 0.5, 0.333 respectively for untwinned datasets, and 0.375, 0.2 for perfectly twinned datasets.

5 Model quality [i](#)

5.1 Standard geometry [i](#)

Bond lengths and bond angles in the following residue types are not validated in this section: 5GP

The Z score for a bond length (or angle) is the number of standard deviations the observed value is removed from the expected value. A bond length (or angle) with $|Z| > 5$ is considered an outlier worth inspection. RMSZ is the root-mean-square of all Z scores of the bond lengths (or angles).

Mol	Chain	Bond lengths		Bond angles	
		RMSZ	# Z >5	RMSZ	# Z >5
1	A	0.50	0/1841	0.75	0/2485
1	B	0.50	0/1841	0.76	0/2485
All	All	0.50	0/3682	0.76	0/4970

There are no bond length outliers.

There are no bond angle outliers.

There are no chirality outliers.

There are no planarity outliers.

5.2 Too-close contacts [i](#)

In the following table, the Non-H and H(model) columns list the number of non-hydrogen atoms and hydrogen atoms in the chain respectively. The H(added) column lists the number of hydrogen atoms added and optimized by MolProbity. The Clashes column lists the number of clashes within the asymmetric unit, whereas Symm-Clashes lists symmetry-related clashes.

Mol	Chain	Non-H	H(model)	H(added)	Clashes	Symm-Clashes
1	A	1803	0	1818	39	0
1	B	1803	0	1818	39	0
2	A	92	0	44	1	0
2	B	92	0	44	0	0
3	A	139	0	0	3	0
3	B	135	0	0	6	0
All	All	4064	0	3724	72	0

The all-atom clashscore is defined as the number of clashes found per 1000 atoms (including hydrogen atoms). The all-atom clashscore for this structure is 10.

All (72) close contacts within the same asymmetric unit are listed below, sorted by their clash

magnitude.

Atom-1	Atom-2	Interatomic distance (Å)	Clash overlap (Å)
1:B:142:GLU:HB2	1:B:243:LYS:HG2	1.74	0.68
1:A:94:ARG:NH1	1:A:96:ILE:HD11	2.10	0.66
1:B:184:LEU:HD23	1:B:205:LYS:HG2	1.79	0.64
1:A:211:ARG:HH22	1:B:180:GLN:HE22	1.46	0.62
1:B:180:GLN:NE2	1:B:181:VAL:H	1.97	0.62
1:A:211:ARG:NH2	1:B:180:GLN:HE22	1.97	0.62
1:A:240:ASN:HD21	1:A:243:LYS:H	1.47	0.62
1:A:193:LEU:H	1:A:193:LEU:HD13	1.65	0.61
1:A:94:ARG:HD3	1:A:106:HIS:CE1	2.38	0.59
1:A:240:ASN:ND2	1:A:243:LYS:H	2.00	0.59
1:A:207:CYS:HB2	3:A:302:HOH:O	2.03	0.59
1:A:94:ARG:HH11	1:A:96:ILE:HD11	1.68	0.58
1:B:35:MET:HE1	1:B:105:ILE:HD11	1.85	0.58
1:A:211:ARG:HH12	1:B:180:GLN:NE2	2.02	0.58
1:B:180:GLN:HE21	1:B:181:VAL:H	1.51	0.57
1:B:111:LEU:HA	1:B:124:LEU:HD23	1.87	0.56
1:B:109:SER:OG	1:B:124:LEU:HB3	2.05	0.56
1:A:38:HIS:HB3	1:B:38:HIS:HB3	1.88	0.55
1:B:233:LEU:C	1:B:233:LEU:HD23	2.27	0.55
1:A:152:ASP:O	1:A:153:GLU:HB2	2.08	0.54
1:A:165:ARG:NH2	1:A:231:LYS:HD2	2.23	0.54
1:A:165:ARG:HH22	1:A:231:LYS:HD2	1.74	0.52
1:A:144:ASN:HD21	1:A:243:LYS:NZ	2.08	0.52
1:A:94:ARG:HH11	1:A:94:ARG:HG2	1.74	0.51
1:A:105:ILE:HD12	1:A:105:ILE:N	2.25	0.51
1:A:137:LYS:HG2	2:A:504:5GP:O2P	2.11	0.51
1:A:21:SER:N	3:A:346:HOH:O	2.43	0.51
1:A:211:ARG:HH22	1:B:180:GLN:NE2	2.09	0.51
1:A:240:ASN:HD22	1:A:240:ASN:C	2.14	0.51
1:B:142:GLU:HB3	1:B:243:LYS:HE3	1.91	0.51
1:A:109:SER:OG	1:A:124:LEU:HB3	2.11	0.50
1:A:232:ASN:O	1:A:236:GLN:HG3	2.11	0.50
1:B:207:CYS:HB2	3:B:361:HOH:O	2.13	0.49
1:B:135:ARG:NH1	3:B:370:HOH:O	2.45	0.49
1:B:200:PRO:HD2	3:B:307:HOH:O	2.13	0.49
1:B:22:LYS:CD	1:B:135:ARG:HD2	2.43	0.48
1:B:191:SER:HA	1:B:199:PHE:CE2	2.49	0.47
1:B:138:GLU:HB2	1:B:139:PRO:HD2	1.97	0.47
1:A:240:ASN:ND2	1:A:240:ASN:C	2.65	0.47
1:A:150:LEU:HD13	1:A:151:PHE:N	2.30	0.46
1:B:22:LYS:HD3	1:B:135:ARG:HD2	1.97	0.46

Continued on next page...

Continued from previous page...

Atom-1	Atom-2	Interatomic distance (Å)	Clash overlap (Å)
1:A:24:VAL:HA	1:A:132:VAL:O	2.15	0.46
1:A:38:HIS:O	1:A:39:SER:HB2	2.16	0.45
1:B:135:ARG:HG3	1:B:135:ARG:HH11	1.81	0.45
1:B:232:ASN:O	1:B:236:GLN:HG3	2.17	0.45
1:B:79:ASP:OD2	1:B:79:ASP:N	2.50	0.45
1:A:211:ARG:NH2	3:A:348:HOH:O	2.49	0.44
1:B:141:PHE:O	1:B:162:ASP:HA	2.18	0.44
1:B:106:HIS:HD2	3:B:299:HOH:O	2.00	0.44
1:A:150:LEU:HD23	1:A:155:ARG:CZ	2.49	0.43
1:B:105:ILE:N	1:B:105:ILE:HD12	2.34	0.43
1:A:194:ARG:HH11	1:A:194:ARG:HB3	1.84	0.43
1:B:38:HIS:O	1:B:39:SER:HB2	2.18	0.43
1:A:193:LEU:HD22	1:A:193:LEU:N	2.33	0.43
1:B:22:LYS:HD2	1:B:22:LYS:HA	1.79	0.43
1:B:156:GLY:HA2	3:B:313:HOH:O	2.19	0.43
1:B:152:ASP:O	1:B:153:GLU:HB2	2.19	0.43
1:B:110:GLN:NE2	3:B:276:HOH:O	2.52	0.42
1:B:168:CYS:SG	1:B:220:LEU:HD23	2.59	0.42
1:B:193:LEU:N	1:B:193:LEU:HD22	2.33	0.42
1:A:193:LEU:H	1:A:193:LEU:HD22	1.84	0.42
1:B:190:PHE:HA	1:B:198:THR:HG22	2.01	0.42
1:A:141:PHE:O	1:A:162:ASP:HA	2.20	0.42
1:B:22:LYS:HZ1	1:B:134:GLN:HA	1.84	0.42
1:A:104:LEU:C	1:A:105:ILE:HD12	2.40	0.42
1:B:184:LEU:HD21	1:B:205:LYS:NZ	2.35	0.42
1:A:96:ILE:HG22	1:A:97:SER:N	2.34	0.41
1:A:209:LEU:C	1:A:209:LEU:HD12	2.41	0.41
1:A:184:LEU:HD12	1:A:204:GLY:O	2.21	0.41
1:A:211:ARG:NH1	1:B:180:GLN:NE2	2.67	0.41
1:A:211:ARG:HG2	1:A:216:ALA:HA	2.02	0.41
1:B:42:LEU:HD11	1:B:60:PHE:HB2	2.02	0.41

There are no symmetry-related clashes.

5.3 Torsion angles

5.3.1 Protein backbone

In the following table, the Percentiles column shows the percent Ramachandran outliers of the chain as a percentile score with respect to all X-ray entries followed by that with respect to entries of similar resolution.

The Analysed column shows the number of residues for which the backbone conformation was analysed, and the total number of residues.

Mol	Chain	Analysed	Favoured	Allowed	Outliers	Percentiles	
1	A	225/227 (99%)	218 (97%)	6 (3%)	1 (0%)	34	32
1	B	225/227 (99%)	217 (96%)	7 (3%)	1 (0%)	34	32
All	All	450/454 (99%)	435 (97%)	13 (3%)	2 (0%)	34	32

All (2) Ramachandran outliers are listed below:

Mol	Chain	Res	Type
1	A	196	THR
1	B	196	THR

5.3.2 Protein sidechains [i](#)

In the following table, the Percentiles column shows the percent sidechain outliers of the chain as a percentile score with respect to all X-ray entries followed by that with respect to entries of similar resolution.

The Analysed column shows the number of residues for which the sidechain conformation was analysed, and the total number of residues.

Mol	Chain	Analysed	Rotameric	Outliers	Percentiles	
1	A	201/201 (100%)	193 (96%)	8 (4%)	31	32
1	B	201/201 (100%)	192 (96%)	9 (4%)	27	27
All	All	402/402 (100%)	385 (96%)	17 (4%)	30	30

All (17) residues with a non-rotameric sidechain are listed below:

Mol	Chain	Res	Type
1	A	79	ASP
1	A	98	PRO
1	A	143	LEU
1	A	149	VAL
1	A	152	ASP
1	A	193	LEU
1	A	239	PHE
1	A	240	ASN
1	B	22	LYS
1	B	79	ASP
1	B	81	LEU

Continued on next page...

Continued from previous page...

Mol	Chain	Res	Type
1	B	85	PHE
1	B	119	VAL
1	B	143	LEU
1	B	149	VAL
1	B	200	PRO
1	B	245	THR

Sometimes sidechains can be flipped to improve hydrogen bonding and reduce clashes. All (14) such sidechains are listed below:

Mol	Chain	Res	Type
1	A	86	GLN
1	A	106	HIS
1	A	144	ASN
1	A	228	ASN
1	A	232	ASN
1	A	236	GLN
1	A	240	ASN
1	B	106	HIS
1	B	110	GLN
1	B	154	HIS
1	B	180	GLN
1	B	232	ASN
1	B	236	GLN
1	B	247	ASN

5.3.3 RNA [i](#)

There are no RNA molecules in this entry.

5.4 Non-standard residues in protein, DNA, RNA chains [i](#)

There are no non-standard protein/DNA/RNA residues in this entry.

5.5 Carbohydrates [i](#)

There are no monosaccharides in this entry.

5.6 Ligand geometry [i](#)

8 ligands are modelled in this entry.

In the following table, the Counts columns list the number of bonds (or angles) for which Mogul statistics could be retrieved, the number of bonds (or angles) that are observed in the model and the number of bonds (or angles) that are defined in the Chemical Component Dictionary. The Link column lists molecule types, if any, to which the group is linked. The Z score for a bond length (or angle) is the number of standard deviations the observed value is removed from the expected value. A bond length (or angle) with $|Z| > 2$ is considered an outlier worth inspection. RMSZ is the root-mean-square of all Z scores of the bond lengths (or angles).

Mol	Type	Chain	Res	Link	Bond lengths			Bond angles		
					Counts	RMSZ	# Z > 2	Counts	RMSZ	# Z > 2
2	5GP	A	501	2	18,25,26	1.40	3 (16%)	20,37,40	2.21	8 (40%)
2	5GP	B	503	2	18,25,26	1.39	3 (16%)	20,37,40	2.25	6 (30%)
2	5GP	B	501	2	18,25,26	1.39	3 (16%)	20,37,40	2.12	5 (25%)
2	5GP	A	502	2	18,25,26	1.39	3 (16%)	20,37,40	2.14	5 (25%)
2	5GP	A	504	2	18,25,26	1.41	3 (16%)	20,37,40	2.24	7 (35%)
2	5GP	B	504	2	18,25,26	1.42	3 (16%)	20,37,40	2.14	6 (30%)
2	5GP	A	503	2	18,25,26	1.40	3 (16%)	20,37,40	2.18	6 (30%)
2	5GP	B	502	2	18,25,26	1.40	3 (16%)	20,37,40	2.11	5 (25%)

In the following table, the Chirals column lists the number of chiral outliers, the number of chiral centers analysed, the number of these observed in the model and the number defined in the Chemical Component Dictionary. Similar counts are reported in the Torsion and Rings columns. '-' means no outliers of that kind were identified.

Mol	Type	Chain	Res	Link	Chirals	Torsions	Rings
2	5GP	A	501	2	-	0/3/25/26	0/3/3/3
2	5GP	B	503	2	-	0/3/25/26	0/3/3/3
2	5GP	B	501	2	-	0/3/25/26	0/3/3/3
2	5GP	A	502	2	-	0/3/25/26	0/3/3/3
2	5GP	A	504	2	-	0/3/25/26	0/3/3/3
2	5GP	B	504	2	-	0/3/25/26	0/3/3/3
2	5GP	A	503	2	-	0/3/25/26	0/3/3/3
2	5GP	B	502	2	-	0/3/25/26	0/3/3/3

All (24) bond length outliers are listed below:

Mol	Chain	Res	Type	Atoms	Z	Observed(Å)	Ideal(Å)
2	A	501	5GP	C6-N1	4.26	1.40	1.33
2	A	504	5GP	C6-N1	4.24	1.40	1.33

Continued on next page...

Continued from previous page...

Mol	Chain	Res	Type	Atoms	Z	Observed(Å)	Ideal(Å)
2	B	503	5GP	C6-N1	4.22	1.40	1.33
2	B	504	5GP	C6-N1	4.21	1.40	1.33
2	B	502	5GP	C6-N1	4.20	1.40	1.33
2	A	503	5GP	C6-N1	4.20	1.40	1.33
2	B	501	5GP	C6-N1	4.19	1.40	1.33
2	A	502	5GP	C6-N1	4.18	1.40	1.33
2	B	504	5GP	C2-N1	2.97	1.40	1.35
2	A	501	5GP	C2-N1	2.93	1.40	1.35
2	A	502	5GP	C2-N1	2.90	1.40	1.35
2	B	501	5GP	C2-N1	2.88	1.40	1.35
2	B	502	5GP	C2-N1	2.85	1.40	1.35
2	A	503	5GP	C2-N1	2.85	1.40	1.35
2	B	503	5GP	C2-N1	2.85	1.40	1.35
2	A	504	5GP	C2-N1	2.85	1.40	1.35
2	A	504	5GP	O4'-C1'	2.41	1.44	1.41
2	B	502	5GP	O4'-C1'	2.41	1.44	1.41
2	A	503	5GP	O4'-C1'	2.37	1.44	1.41
2	B	504	5GP	O4'-C1'	2.35	1.44	1.41
2	A	502	5GP	O4'-C1'	2.29	1.44	1.41
2	B	501	5GP	O4'-C1'	2.29	1.44	1.41
2	B	503	5GP	O4'-C1'	2.27	1.44	1.41
2	A	501	5GP	O4'-C1'	2.22	1.44	1.41

All (48) bond angle outliers are listed below:

Mol	Chain	Res	Type	Atoms	Z	Observed(°)	Ideal(°)
2	A	501	5GP	N3-C2-N1	-5.40	120.02	127.22
2	A	504	5GP	N3-C2-N1	-5.36	120.07	127.22
2	A	504	5GP	C2-N3-C4	5.36	121.48	115.36
2	A	501	5GP	C2-N3-C4	5.35	121.47	115.36
2	A	503	5GP	N3-C2-N1	-5.32	120.12	127.22
2	B	503	5GP	N3-C2-N1	-5.29	120.17	127.22
2	B	503	5GP	C2-N3-C4	5.25	121.36	115.36
2	B	502	5GP	C2-N3-C4	5.24	121.34	115.36
2	B	501	5GP	N3-C2-N1	-5.24	120.24	127.22
2	A	503	5GP	C2-N3-C4	5.22	121.32	115.36
2	A	502	5GP	N3-C2-N1	-5.17	120.33	127.22
2	B	504	5GP	N3-C2-N1	-5.15	120.35	127.22
2	A	502	5GP	C2-N3-C4	5.10	121.19	115.36
2	B	502	5GP	N3-C2-N1	-5.08	120.45	127.22
2	B	501	5GP	C2-N3-C4	4.95	121.01	115.36
2	B	504	5GP	C2-N3-C4	4.92	120.98	115.36

Continued on next page...

Continued from previous page...

Mol	Chain	Res	Type	Atoms	Z	Observed(°)	Ideal(°)
2	B	504	5GP	C5-C6-N1	-3.45	118.72	123.43
2	B	501	5GP	C5-C6-N1	-3.43	118.74	123.43
2	A	502	5GP	C5-C6-N1	-3.38	118.81	123.43
2	B	502	5GP	C5-C6-N1	-3.37	118.82	123.43
2	A	504	5GP	C5-C6-N1	-3.36	118.83	123.43
2	B	503	5GP	C5-C6-N1	-3.36	118.83	123.43
2	A	503	5GP	C5-C6-N1	-3.36	118.84	123.43
2	A	501	5GP	C5-C6-N1	-3.14	119.14	123.43
2	B	503	5GP	C2'-C3'-C4'	-2.62	97.55	102.64
2	A	504	5GP	C4-C5-N7	-2.59	106.70	109.40
2	A	503	5GP	C2'-C3'-C4'	-2.38	98.01	102.64
2	B	503	5GP	C4-C5-N7	-2.38	106.92	109.40
2	A	501	5GP	C2'-C3'-C4'	-2.32	98.14	102.64
2	B	502	5GP	C4-C5-N7	-2.30	107.01	109.40
2	B	501	5GP	C6-N1-C2	2.24	119.48	115.93
2	A	501	5GP	C4-C5-N7	-2.23	107.08	109.40
2	A	504	5GP	N2-C2-N1	2.22	120.70	117.25
2	A	503	5GP	C6-N1-C2	2.19	119.41	115.93
2	A	504	5GP	C6-N1-C2	2.16	119.36	115.93
2	B	504	5GP	C4-C5-N7	-2.15	107.15	109.40
2	B	503	5GP	C6-N1-C2	2.15	119.34	115.93
2	B	504	5GP	C6-N1-C2	2.14	119.33	115.93
2	A	502	5GP	C4-C5-N7	-2.13	107.18	109.40
2	A	502	5GP	C6-N1-C2	2.11	119.29	115.93
2	B	504	5GP	N2-C2-N1	2.11	120.54	117.25
2	B	501	5GP	C2'-C3'-C4'	-2.10	98.56	102.64
2	A	501	5GP	C6-N1-C2	2.08	119.24	115.93
2	A	503	5GP	C4-C5-N7	-2.08	107.23	109.40
2	A	501	5GP	N2-C2-N1	2.03	120.41	117.25
2	A	501	5GP	C6-C5-C4	-2.02	118.86	120.80
2	B	502	5GP	C2'-C3'-C4'	-2.02	98.72	102.64
2	A	504	5GP	C2'-C3'-C4'	-2.01	98.73	102.64

There are no chirality outliers.

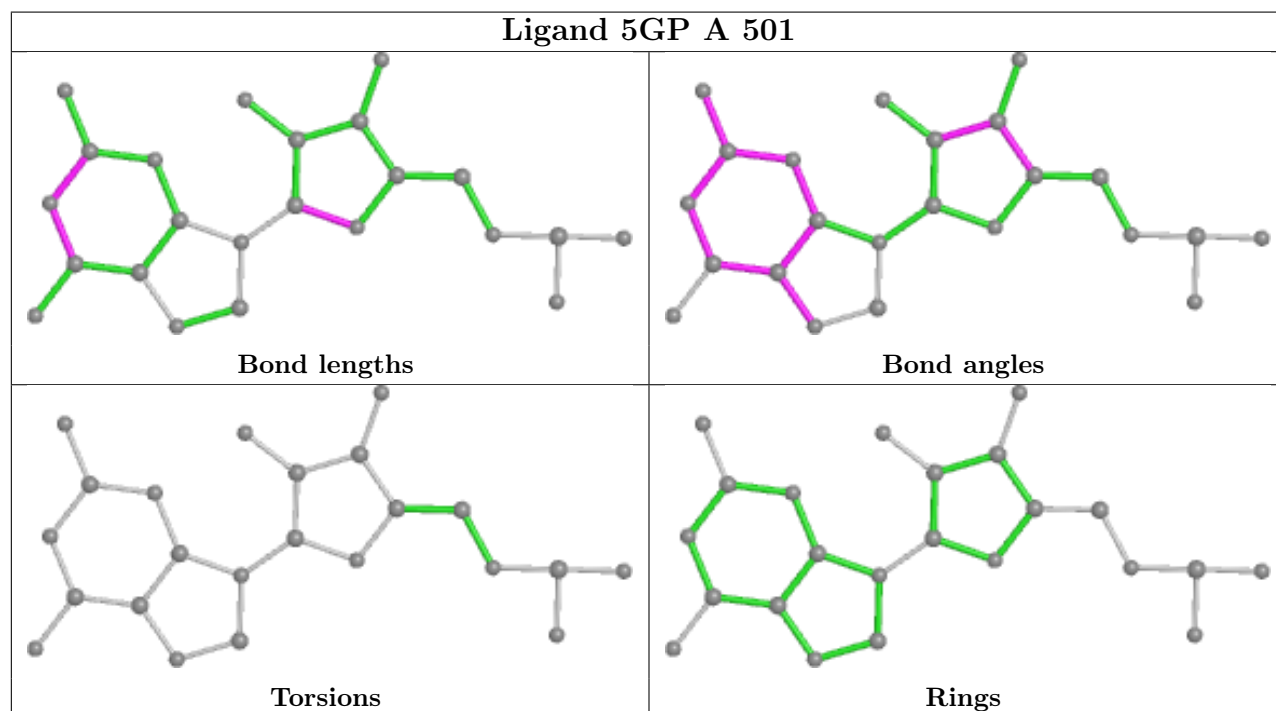
There are no torsion outliers.

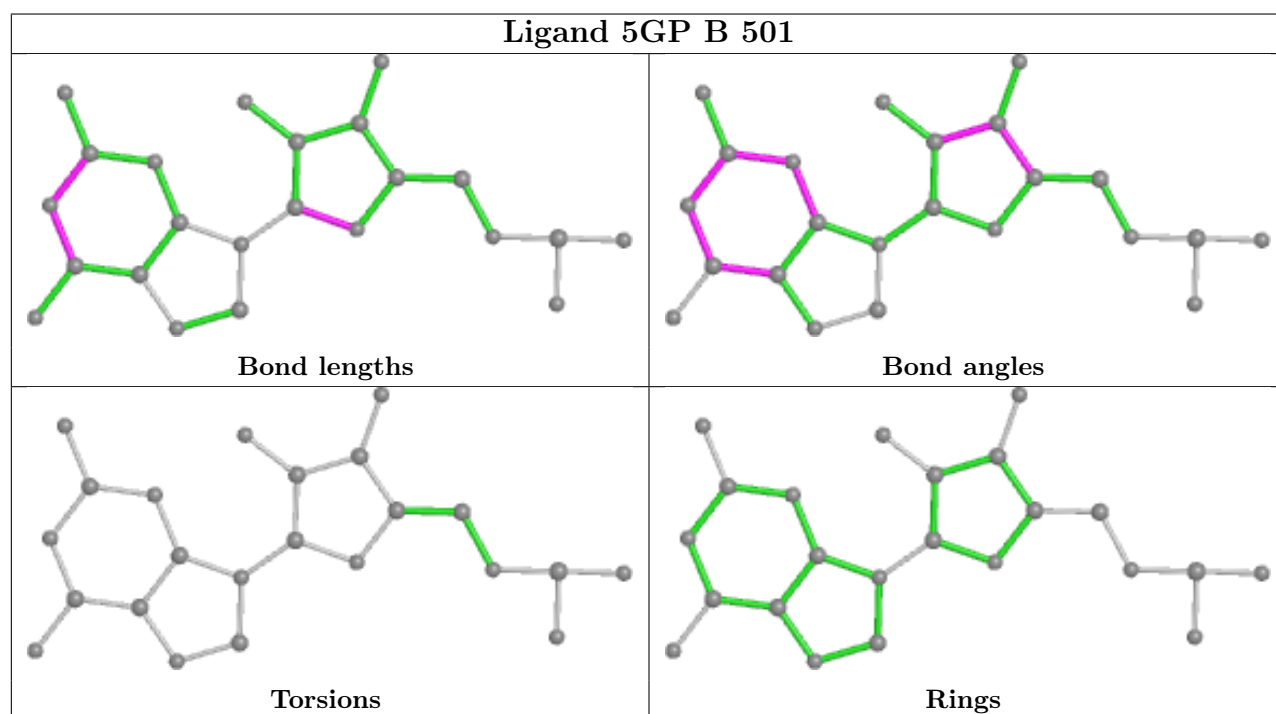
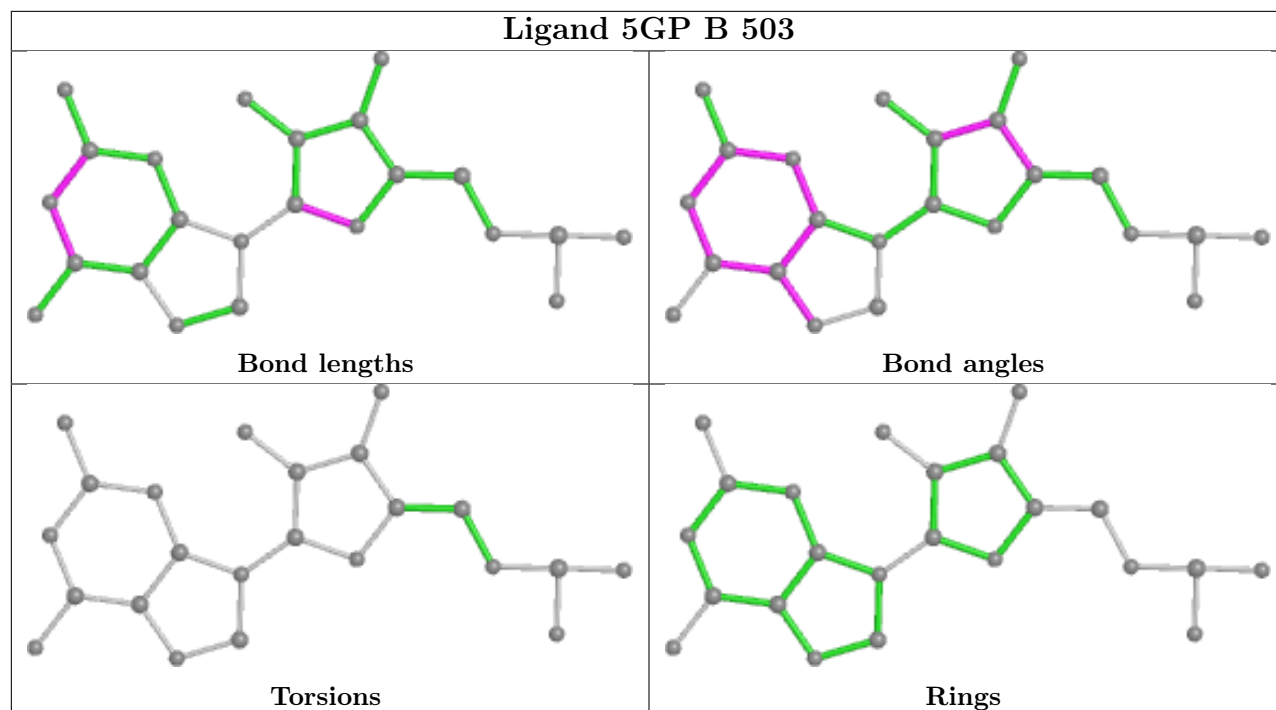
There are no ring outliers.

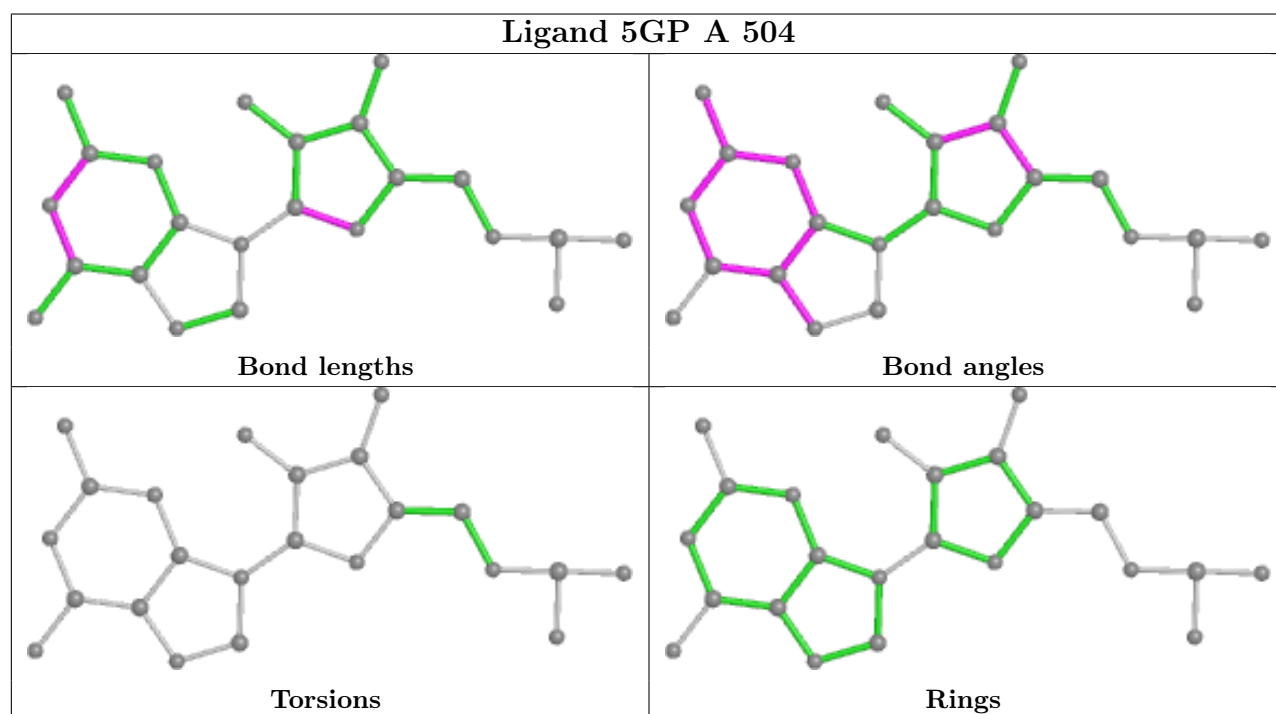
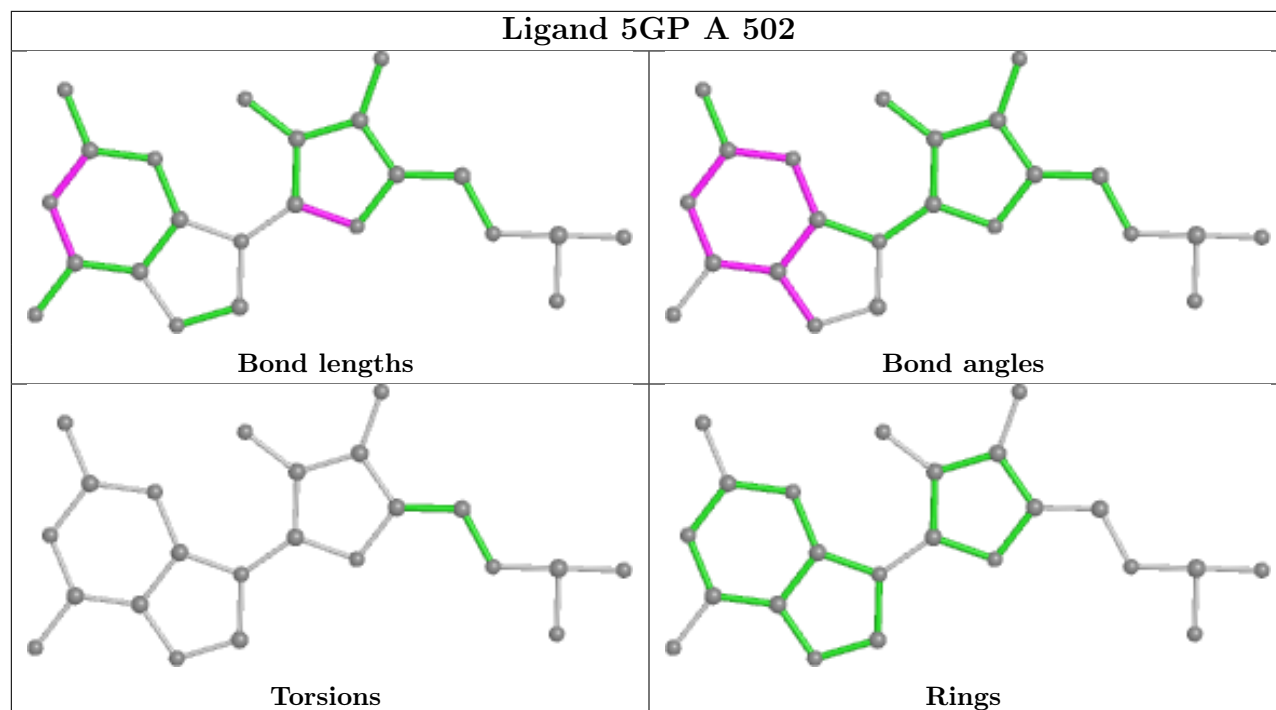
1 monomer is involved in 1 short contact:

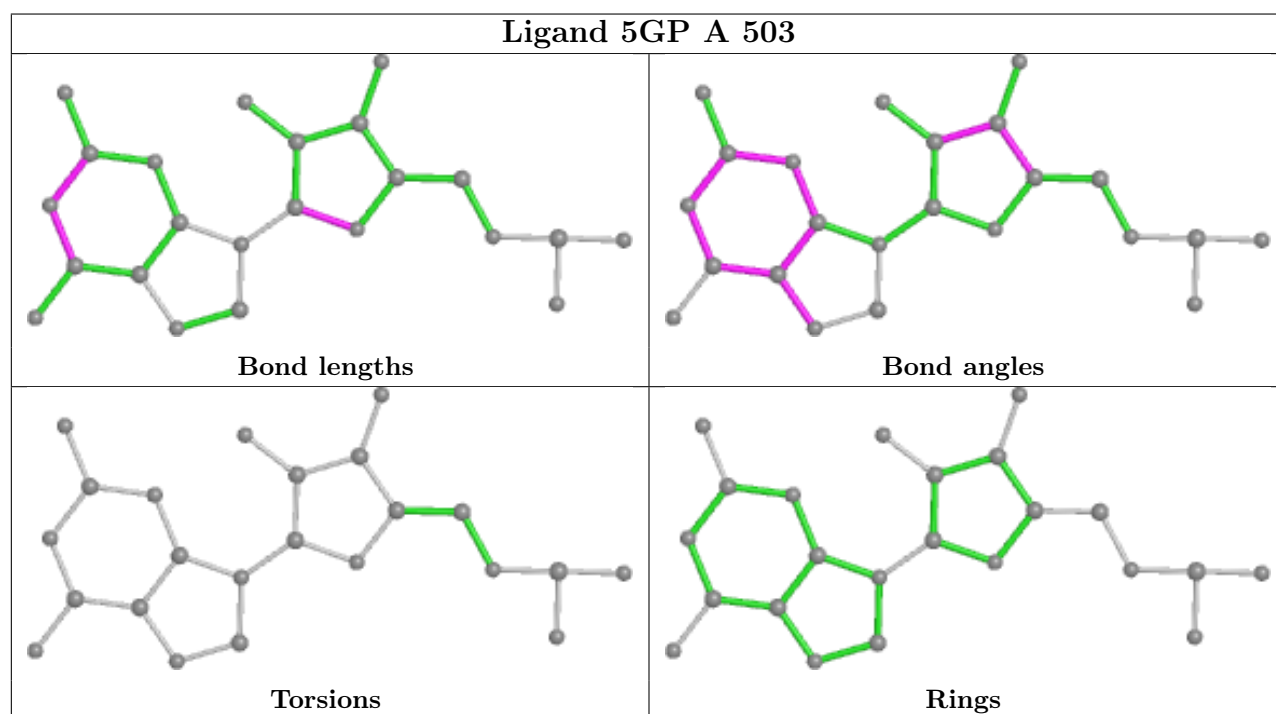
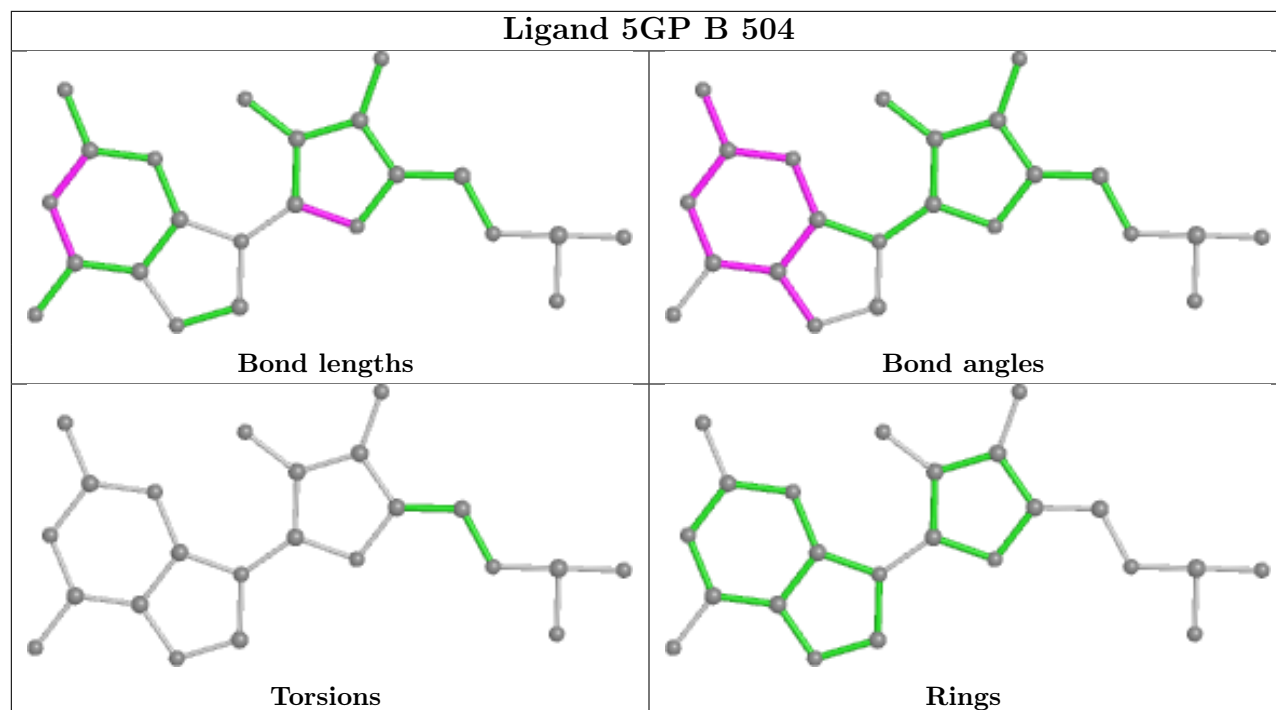
Mol	Chain	Res	Type	Clashes	Symm-Clashes
2	A	504	5GP	1	0

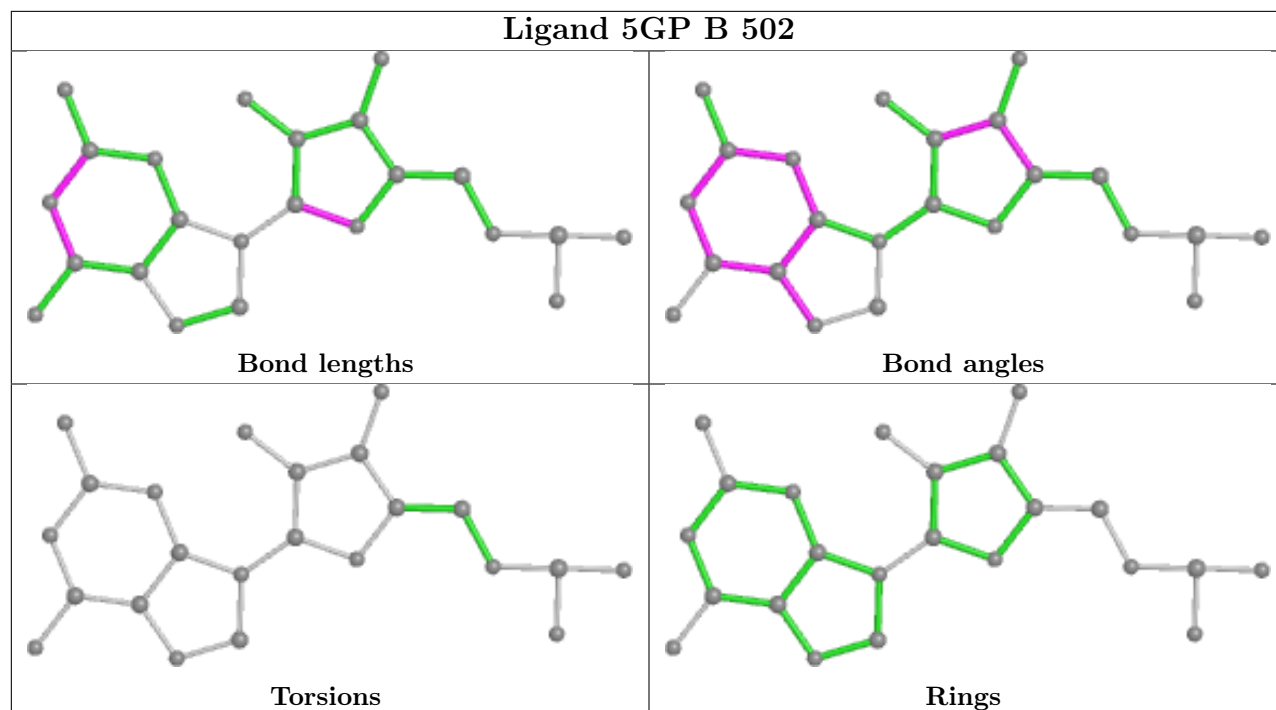
The following is a two-dimensional graphical depiction of Mogul quality analysis of bond lengths, bond angles, torsion angles, and ring geometry for all instances of the Ligand of Interest. In addition, ligands with molecular weight > 250 and outliers as shown on the validation Tables will also be included. For torsion angles, if less than 5% of the Mogul distribution of torsion angles is within 10 degrees of the torsion angle in question, then that torsion angle is considered an outlier. Any bond that is central to one or more torsion angles identified as an outlier by Mogul will be highlighted in the graph. For rings, the root-mean-square deviation (RMSD) between the ring in question and similar rings identified by Mogul is calculated over all ring torsion angles. If the average RMSD is greater than 60 degrees and the minimal RMSD between the ring in question and any Mogul-identified rings is also greater than 60 degrees, then that ring is considered an outlier. The outliers are highlighted in purple. The color gray indicates Mogul did not find sufficient equivalents in the CSD to analyse the geometry.











5.7 Other polymers [i](#)

There are no such residues in this entry.

5.8 Polymer linkage issues [i](#)

There are no chain breaks in this entry.

6 Fit of model and data [i](#)

6.1 Protein, DNA and RNA chains [i](#)

In the following table, the column labelled ‘#RSRZ > 2’ contains the number (and percentage) of RSRZ outliers, followed by percent RSRZ outliers for the chain as percentile scores relative to all X-ray entries and entries of similar resolution. The OWAB column contains the minimum, median, 95th percentile and maximum values of the occupancy-weighted average B-factor per residue. The column labelled ‘Q < 0.9’ lists the number of (and percentage) of residues with an average occupancy less than 0.9.

Mol	Chain	Analysed	<RSRZ>	#RSRZ>2	OWAB(Å ²)	Q<0.9
1	A	227/227 (100%)	-0.20	7 (3%) 49 55	13, 25, 55, 83	0
1	B	227/227 (100%)	-0.19	10 (4%) 34 40	13, 23, 60, 88	0
All	All	454/454 (100%)	-0.19	17 (3%) 41 48	13, 24, 60, 88	0

All (17) RSRZ outliers are listed below:

Mol	Chain	Res	Type	RSRZ
1	B	242	THR	7.4
1	A	241	GLY	4.6
1	A	239	PHE	4.3
1	B	239	PHE	4.2
1	B	240	ASN	4.0
1	B	241	GLY	3.7
1	B	194	ARG	3.4
1	A	240	ASN	3.4
1	B	238	LYS	3.3
1	A	242	THR	3.2
1	A	247	ASN	3.2
1	A	195	GLY	3.1
1	A	238	LYS	2.4
1	B	247	ASN	2.4
1	B	246	LEU	2.2
1	B	235	ALA	2.1
1	B	75	LYS	2.1

6.2 Non-standard residues in protein, DNA, RNA chains [i](#)

There are no non-standard protein/DNA/RNA residues in this entry.

6.3 Carbohydrates

There are no monosaccharides in this entry.

6.4 Ligands

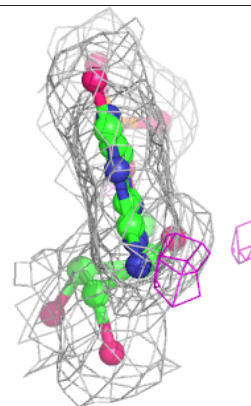
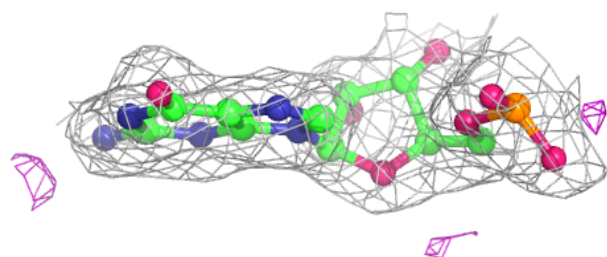
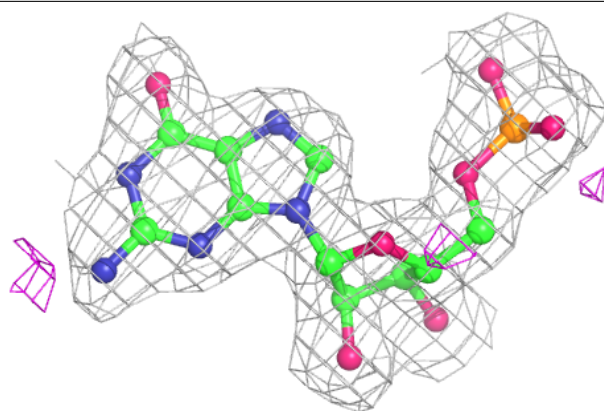
In the following table, the Atoms column lists the number of modelled atoms in the group and the number defined in the chemical component dictionary. The B-factors column lists the minimum, median, 95th percentile and maximum values of B factors of atoms in the group. The column labelled 'Q< 0.9' lists the number of atoms with occupancy less than 0.9.

Mol	Type	Chain	Res	Atoms	RSCC	RSR	B-factors(Å ²)	Q<0.9
2	5GP	B	502	23/24	0.95	0.09	21,25,30,33	0
2	5GP	B	501	23/24	0.96	0.09	21,26,29,32	0
2	5GP	A	501	23/24	0.96	0.09	18,24,30,30	0
2	5GP	B	503	23/24	0.96	0.09	16,20,25,27	0
2	5GP	A	504	23/24	0.97	0.09	15,20,24,26	0
2	5GP	B	504	23/24	0.97	0.09	16,22,26,30	0
2	5GP	A	503	23/24	0.98	0.07	13,19,25,28	0
2	5GP	A	502	23/24	0.98	0.07	17,23,26,28	0

The following is a graphical depiction of the model fit to experimental electron density of all instances of the Ligand of Interest. In addition, ligands with molecular weight > 250 and outliers as shown on the geometry validation Tables will also be included. Each fit is shown from different orientation to approximate a three-dimensional view.

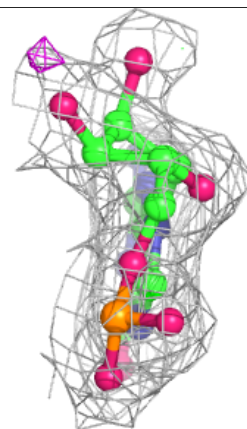
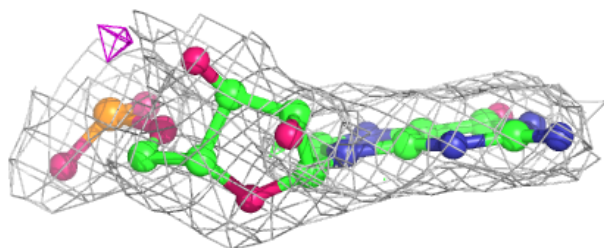
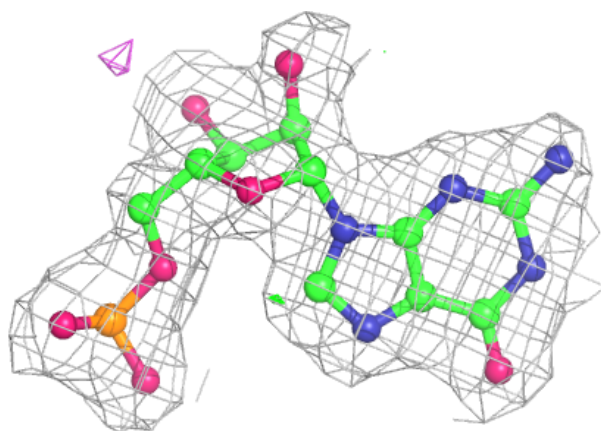
Electron density around 5GP B 502:

$2mF_o-DF_c$ (at 0.7 rmsd) in gray
 mF_o-DF_c (at 3 rmsd) in purple (negative)
and green (positive)

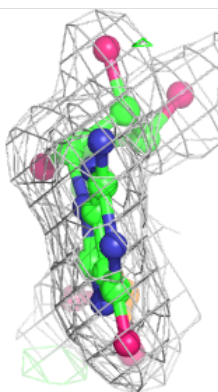
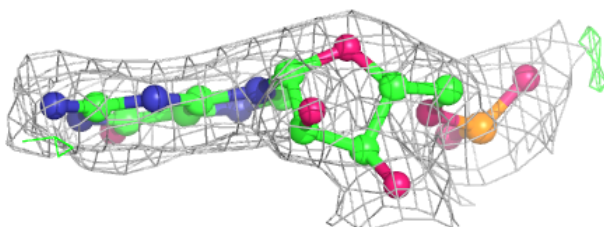
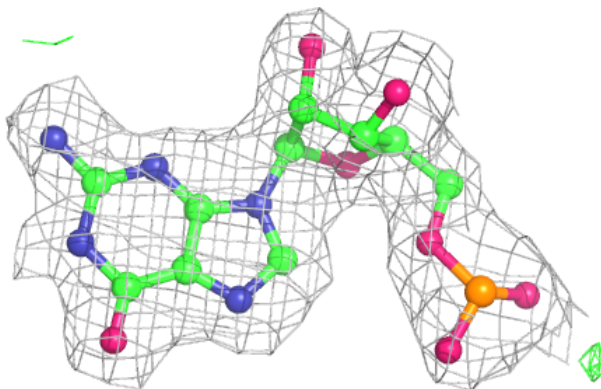


Electron density around 5GP B 501:

$2mF_o-DF_c$ (at 0.7 rmsd) in gray
 mF_o-DF_c (at 3 rmsd) in purple (negative)
and green (positive)

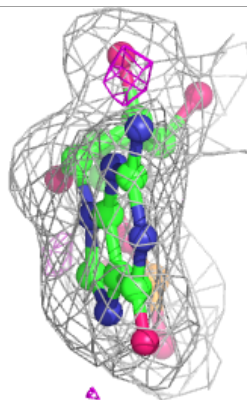
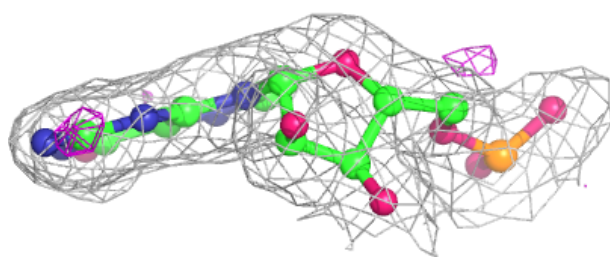
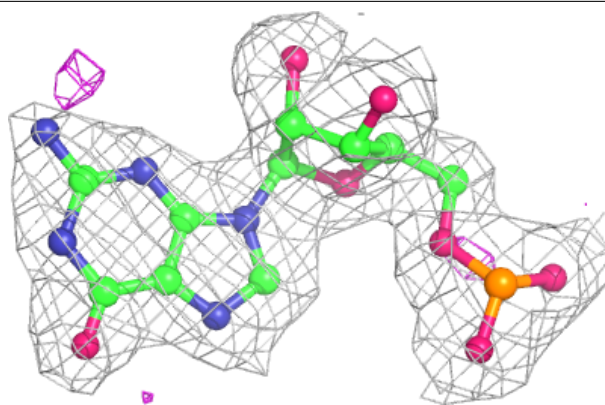
**Electron density around 5GP A 501:**

$2mF_o-DF_c$ (at 0.7 rmsd) in gray
 mF_o-DF_c (at 3 rmsd) in purple (negative)
and green (positive)



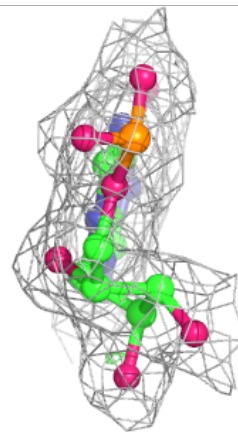
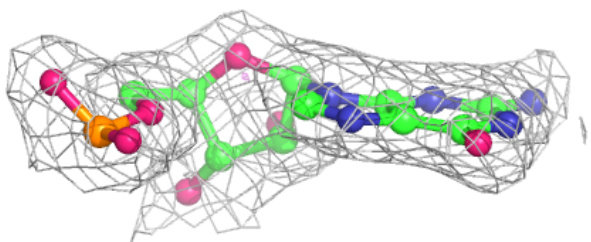
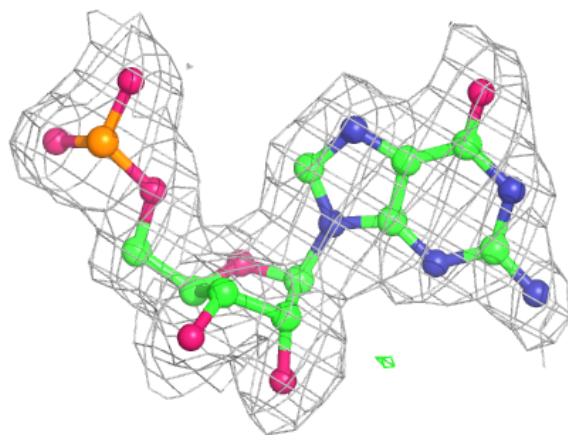
Electron density around 5GP B 503:

$2mF_o-DF_c$ (at 0.7 rmsd) in gray
 mF_o-DF_c (at 3 rmsd) in purple (negative)
and green (positive)



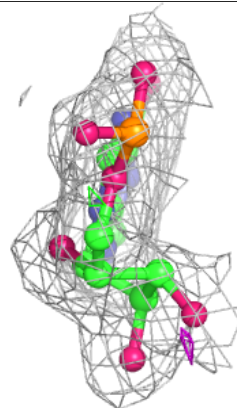
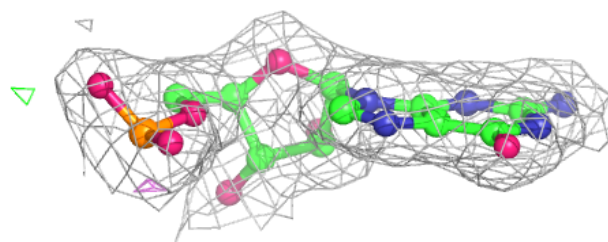
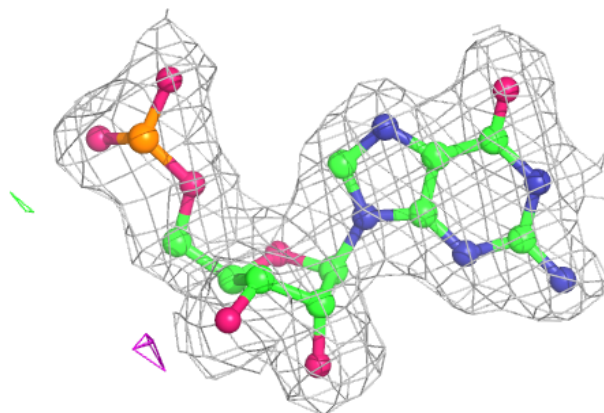
Electron density around 5GP A 504:

$2mF_o-DF_c$ (at 0.7 rmsd) in gray
 mF_o-DF_c (at 3 rmsd) in purple (negative)
and green (positive)

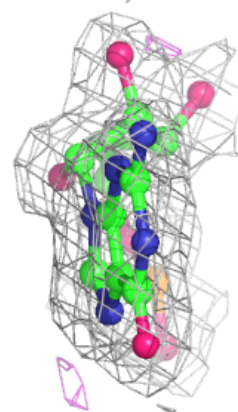
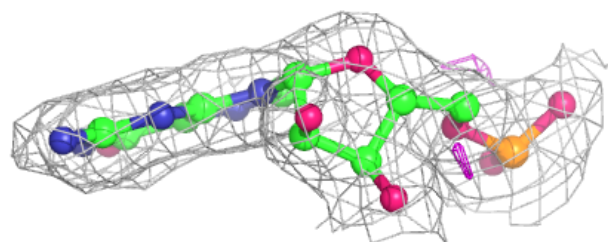
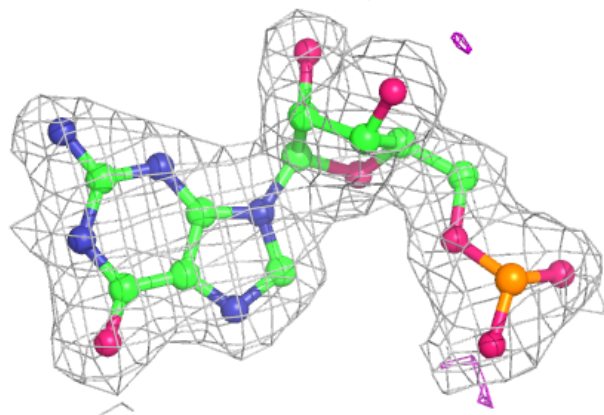


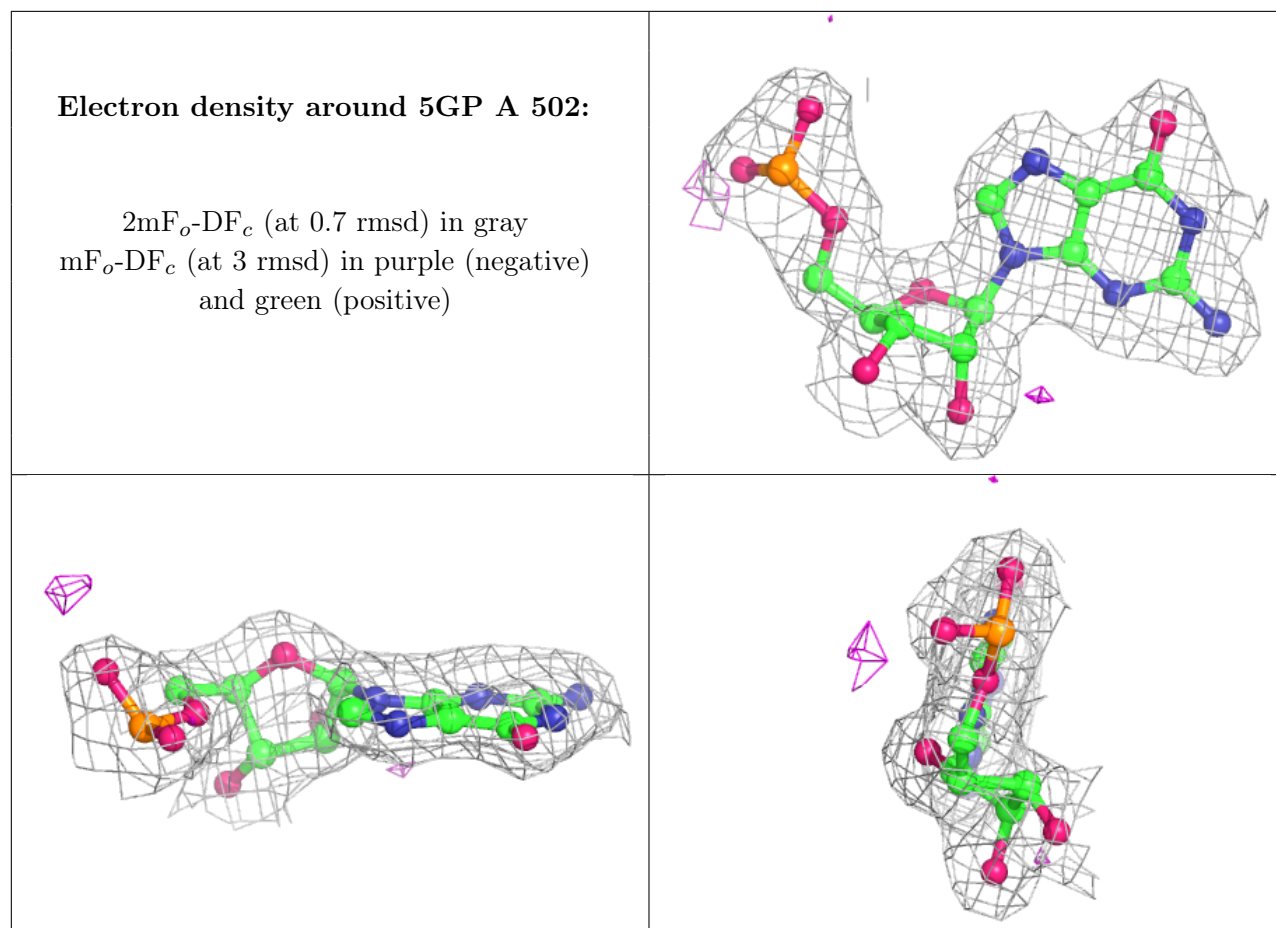
Electron density around 5GP B 504:

$2mF_o-DF_c$ (at 0.7 rmsd) in gray
 mF_o-DF_c (at 3 rmsd) in purple (negative)
and green (positive)

**Electron density around 5GP A 503:**

$2mF_o-DF_c$ (at 0.7 rmsd) in gray
 mF_o-DF_c (at 3 rmsd) in purple (negative)
and green (positive)





6.5 Other polymers [i](#)

There are no such residues in this entry.