



# wwPDB X-ray Structure Validation Summary Report ⓘ

Nov 16, 2023 – 05:04 AM JST

PDB ID : 6KYA  
Title : Crystal structure of human TLR8 in complex TH1027  
Authors : Tanji, H.; Sakaniwa, K.; Ohto, U.; Shimizu, T.  
Deposited on : 2019-09-17  
Resolution : 2.89 Å(reported)

This is a wwPDB X-ray Structure Validation Summary Report for a publicly released PDB entry.

We welcome your comments at [validation@mail.wwpdb.org](mailto:validation@mail.wwpdb.org)

A user guide is available at

<https://www.wwpdb.org/validation/2017/XrayValidationReportHelp>

with specific help available everywhere you see the ⓘ symbol.

The types of validation reports are described at

<http://www.wwpdb.org/validation/2017/FAQs#types>.

---

The following versions of software and data (see [references ⓘ](#)) were used in the production of this report:

MolProbity : 4.02b-467  
Mogul : 1.8.5 (274361), CSD as541be (2020)  
Xtriage (Phenix) : 1.13  
EDS : 2.36  
buster-report : 1.1.7 (2018)  
Percentile statistics : 20191225.v01 (using entries in the PDB archive December 25th 2019)  
Refmac : 5.8.0158  
CCP4 : 7.0.044 (Gargrove)  
Ideal geometry (proteins) : Engh & Huber (2001)  
Ideal geometry (DNA, RNA) : Parkinson et al. (1996)  
Validation Pipeline (wwPDB-VP) : 2.36

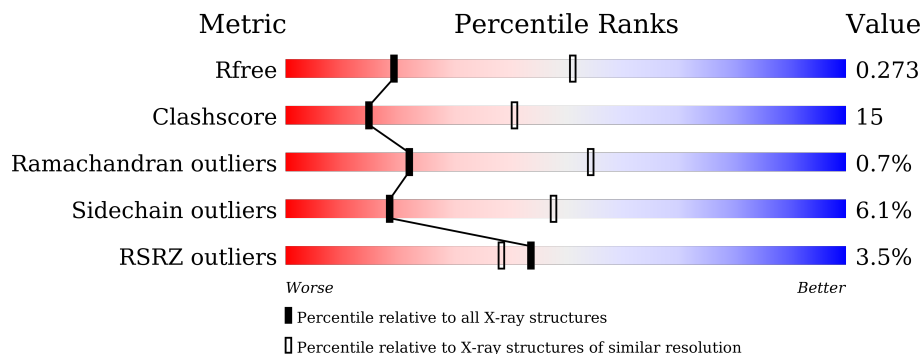
# 1 Overall quality at a glance

The following experimental techniques were used to determine the structure:

*X-RAY DIFFRACTION*

The reported resolution of this entry is 2.89 Å.

Percentile scores (ranging between 0-100) for global validation metrics of the entry are shown in the following graphic. The table shows the number of entries on which the scores are based.



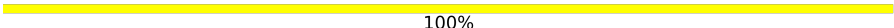
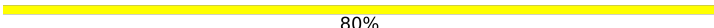
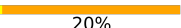
Metric	Whole archive (#Entries)	Similar resolution (#Entries, resolution range(Å))
$R_{free}$	130704	1957 (2.90-2.90)
Clashscore	141614	2172 (2.90-2.90)
Ramachandran outliers	138981	2115 (2.90-2.90)
Sidechain outliers	138945	2117 (2.90-2.90)
RSRZ outliers	127900	1906 (2.90-2.90)

The table below summarises the geometric issues observed across the polymeric chains and their fit to the electron density. The red, orange, yellow and green segments of the lower bar indicate the fraction of residues that contain outliers for  $\geq 3$ , 2, 1 and 0 types of geometric quality criteria respectively. A grey segment represents the fraction of residues that are not modelled. The numeric value for each fraction is indicated below the corresponding segment, with a dot representing fractions  $\leq 5\%$ . The upper red bar (where present) indicates the fraction of residues that have poor fit to the electron density. The numeric value is given above the bar.

Mol	Chain	Length	Quality of chain
1	A	811	 3% 72% 17% 8%
1	B	811	 4% 67% 19% 10%
2	C	4	 75% 25%
2	F	4	 75% 25%
3	D	2	 100%
3	G	2	 100%

*Continued on next page...*

*Continued from previous page...*

Mol	Chain	Length	Quality of chain
4	E	5	 100%
4	H	5	 80%  20%

## 2 Entry composition i

There are 6 unique types of molecules in this entry. The entry contains 12305 atoms, of which 0 are hydrogens and 0 are deuteriums.

In the tables below, the ZeroOcc column contains the number of atoms modelled with zero occupancy, the AltConf column contains the number of residues with at least one atom in alternate conformation and the Trace column contains the number of residues modelled with at most 2 atoms.

- Molecule 1 is a protein called Toll-like receptor 8.

Mol	Chain	Residues	Atoms					ZeroOcc	AltConf	Trace
			Total	C	N	O	S			
1	A	743	5986	3829	1018	1120	19	0	0	0
1	B	730	5889	3769	1001	1100	19	0	0	0

There are 20 discrepancies between the modelled and reference sequences:

Chain	Residue	Modelled	Actual	Comment	Reference
A	23	ARG	-	expression tag	UNP Q9NR97
A	24	SER	-	expression tag	UNP Q9NR97
A	25	PRO	-	expression tag	UNP Q9NR97
A	26	TRP	-	expression tag	UNP Q9NR97
A	828	GLU	-	expression tag	UNP Q9NR97
A	829	PHE	-	expression tag	UNP Q9NR97
A	830	LEU	-	expression tag	UNP Q9NR97
A	831	VAL	-	expression tag	UNP Q9NR97
A	832	PRO	-	expression tag	UNP Q9NR97
A	833	ARG	-	expression tag	UNP Q9NR97
B	23	ARG	-	expression tag	UNP Q9NR97
B	24	SER	-	expression tag	UNP Q9NR97
B	25	PRO	-	expression tag	UNP Q9NR97
B	26	TRP	-	expression tag	UNP Q9NR97
B	828	GLU	-	expression tag	UNP Q9NR97
B	829	PHE	-	expression tag	UNP Q9NR97
B	830	LEU	-	expression tag	UNP Q9NR97
B	831	VAL	-	expression tag	UNP Q9NR97
B	832	PRO	-	expression tag	UNP Q9NR97
B	833	ARG	-	expression tag	UNP Q9NR97

- Molecule 2 is an oligosaccharide called alpha-D-mannopyranose-(1-3)-beta-D-mannopyranose-(1-4)-2-acetamido-2-deoxy-beta-D-gluco-pyranose-(1-4)-2-acetamido-2-deoxy-beta-D-gluco-pyranose.



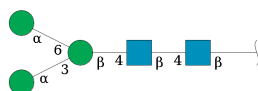
Mol	Chain	Residues	Atoms				ZeroOcc	AltConf	Trace
2	C	4	Total	C	N	O	0	0	0
			50	28	2	20			
2	F	4	Total	C	N	O	0	0	0
			50	28	2	20			

- Molecule 3 is an oligosaccharide called 2-acetamido-2-deoxy-beta-D-glucopyranose-(1-4)-2-acetamido-2-deoxy-beta-D-glucopyranose.



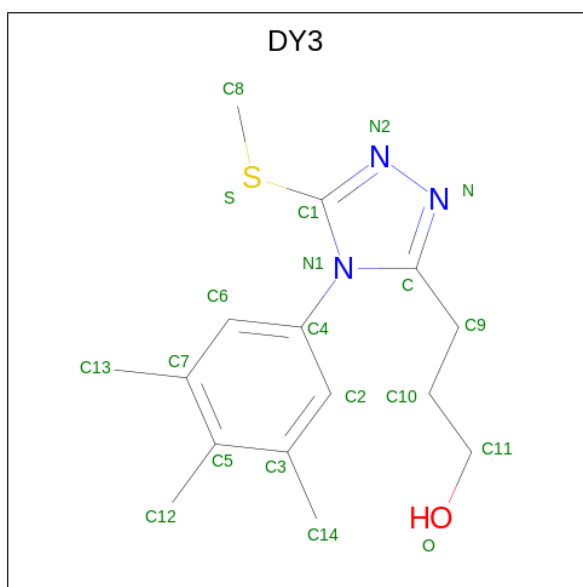
Mol	Chain	Residues	Atoms				ZeroOcc	AltConf	Trace
3	D	2	Total	C	N	O	0	0	0
			28	16	2	10			
3	G	2	Total	C	N	O	0	0	0
			28	16	2	10			

- Molecule 4 is an oligosaccharide called alpha-D-mannopyranose-(1-3)-[alpha-D-mannopyranose-(1-6)]beta-D-mannopyranose-(1-4)-2-acetamido-2-deoxy-beta-D-glucopyranose-(1-4)-2-acetamido-2-deoxy-beta-D-glucopyranose.



Mol	Chain	Residues	Atoms				ZeroOcc	AltConf	Trace
4	E	5	Total	C	N	O	0	0	0
			61	34	2	25			
4	H	5	Total	C	N	O	0	0	0
			61	34	2	25			

- Molecule 5 is 3-[5-methylsulfanyl-4-(3,4,5-trimethylphenyl)-1,2,4-triazol-3-yl]propan-1-ol (three-letter code: DY3) (formula: C<sub>15</sub>H<sub>21</sub>N<sub>3</sub>OS) (labeled as "Ligand of Interest" by depositor).



Mol	Chain	Residues	Atoms					ZeroOcc	AltConf
			Total	C	N	O	S		
5	A	1	Total	C	N	O	S	0	0
			20	15	3	1	1		
5	B	1	Total	C	N	O	S	0	0
			20	15	3	1	1		

- Molecule 6 is 2-acetamido-2-deoxy-beta-D-glucopyranose (three-letter code: NAG) (formula:  $C_8H_{15}NO_6$ ).



Mol	Chain	Residues	Atoms				ZeroOcc	AltConf
			Total	C	N	O		
6	A	1	Total	C	N	O	0	0
			14	8	1	5		

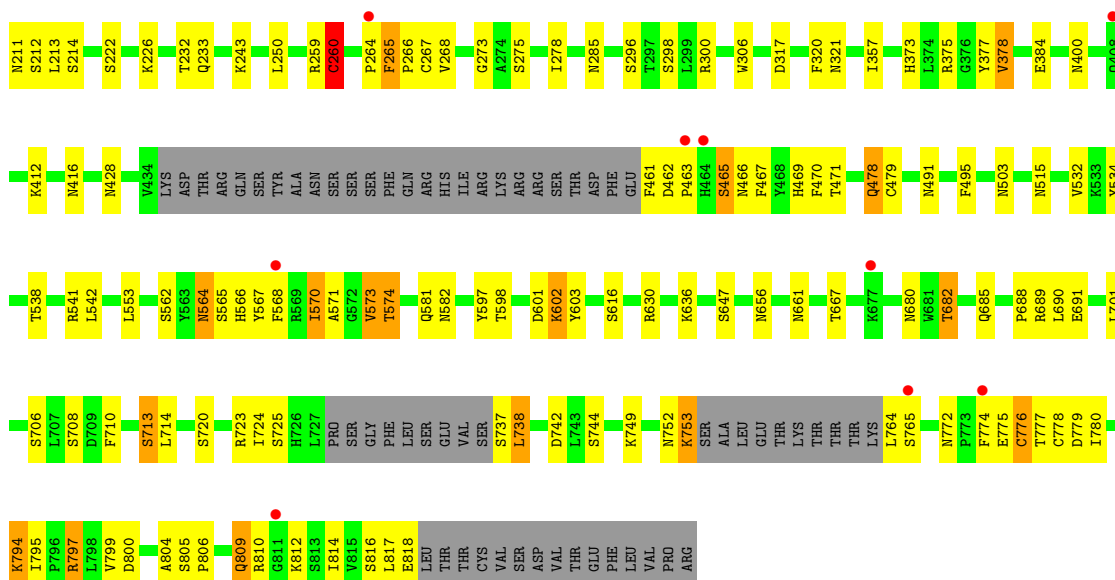
*Continued on next page...*

*Continued from previous page...*

<b>Mol</b>	<b>Chain</b>	<b>Residues</b>	<b>Atoms</b>				<b>ZeroOcc</b>	<b>AltConf</b>
6	A	1	Total 14	C 8	N 1	O 5	0	0
6	A	1	Total 14	C 8	N 1	O 5	0	0
6	A	1	Total 14	C 8	N 1	O 5	0	0
6	B	1	Total 14	C 8	N 1	O 5	0	0
6	B	1	Total 14	C 8	N 1	O 5	0	0
6	B	1	Total 14	C 8	N 1	O 5	0	0
6	B	1	Total 14	C 8	N 1	O 5	0	0







- Molecule 2: alpha-D-mannopyranose-(1-3)-beta-D-mannopyranose-(1-4)-2-acetamido-2-deoxy-beta-D-glucopyranose-(1-4)-2-acetamido-2-deoxy-beta-D-glucopyranose

Chain C: 75% 25%

MAG1  
MAG2  
BMA3  
MAV4

- Molecule 2: alpha-D-mannopyranose-(1-3)-beta-D-mannopyranose-(1-4)-2-acetamido-2-deoxy-beta-D-glucopyranose-(1-4)-2-acetamido-2-deoxy-beta-D-glucopyranose

Chain F: 75% 25%

MAG1  
MAG2  
BMA3  
MAV4

- Molecule 3: 2-acetamido-2-deoxy-beta-D-glucopyranose-(1-4)-2-acetamido-2-deoxy-beta-D-glucopyranose

Chain D: 100%

MAG1  
MAG2

- Molecule 3: 2-acetamido-2-deoxy-beta-D-glucopyranose-(1-4)-2-acetamido-2-deoxy-beta-D-glucopyranose

Chain G: 100%

MAG1  
MAG2



- Molecule 4: alpha-D-mannopyranose-(1-3)-[alpha-D-mannopyranose-(1-6)]beta-D-mannopyranose-(1-4)-2-acetamido-2-deoxy-beta-D-glucopyranose-(1-4)-2-acetamido-2-deoxy-beta-D-glucopyranose

nose

Chain E:  100%

MAG1  
MAG2  
BMA3  
MAN4  
MAN5

• Molecule 4: alpha-D-mannopyranose-(1-3)-[alpha-D-mannopyranose-(1-6)]beta-D-mannopyranose-(1-4)-2-acetamido-2-deoxy-beta-D-glucopyranose-(1-4)-2-acetamido-2-deoxy-beta-D-glucopyranose

Chain H:  80%  20%

MAG1  
MAG2  
BMA3  
MAN4  
MAN5

## 4 Data and refinement statistics

Property	Value	Source
Space group	C 1 2 1	Depositor
Cell constants a, b, c, $\alpha$ , $\beta$ , $\gamma$	142.75Å 96.87Å 140.86Å 90.00° 107.65° 90.00°	Depositor
Resolution (Å)	48.44 – 2.89 48.44 – 2.89	Depositor EDS
% Data completeness (in resolution range)	94.1 (48.44-2.89) 94.2 (48.44-2.89)	Depositor EDS
$R_{merge}$	(Not available)	Depositor
$R_{sym}$	0.08	Depositor
$\langle I/\sigma(I) \rangle$ <sup>1</sup>	2.28 (at 2.91Å)	Xtrriage
Refinement program	REFMAC 5.7.0032	Depositor
R, $R_{free}$	0.228 , 0.277 0.222 , 0.273	Depositor DCC
$R_{free}$ test set	1881 reflections (4.88%)	wwPDB-VP
Wilson B-factor (Å <sup>2</sup> )	84.0	Xtrriage
Anisotropy	0.015	Xtrriage
Bulk solvent $k_{sol}$ (e/Å <sup>3</sup> ), $B_{sol}$ (Å <sup>2</sup> )	0.33 , 62.8	EDS
L-test for twinning <sup>2</sup>	$\langle  L  \rangle = 0.51$ , $\langle L^2 \rangle = 0.34$	Xtrriage
Estimated twinning fraction	No twinning to report.	Xtrriage
$F_o, F_c$ correlation	0.94	EDS
Total number of atoms	12305	wwPDB-VP
Average B, all atoms (Å <sup>2</sup> )	101.0	wwPDB-VP

Xtrriage's analysis on translational NCS is as follows: *The largest off-origin peak in the Patterson function is 3.73% of the height of the origin peak. No significant pseudotranslation is detected.*

<sup>1</sup>Intensities estimated from amplitudes.

<sup>2</sup>Theoretical values of  $\langle |L| \rangle$ ,  $\langle L^2 \rangle$  for acentric reflections are 0.5, 0.333 respectively for untwinned datasets, and 0.375, 0.2 for perfectly twinned datasets.

## 5 Model quality [i](#)

### 5.1 Standard geometry [i](#)

Bond lengths and bond angles in the following residue types are not validated in this section: DY3, NAG, BMA, MAN

The Z score for a bond length (or angle) is the number of standard deviations the observed value is removed from the expected value. A bond length (or angle) with  $|Z| > 5$  is considered an outlier worth inspection. RMSZ is the root-mean-square of all Z scores of the bond lengths (or angles).

Mol	Chain	Bond lengths		Bond angles	
		RMSZ	# Z  >5	RMSZ	# Z  >5
1	A	0.51	0/6109	0.71	1/8284 (0.0%)
1	B	0.50	1/6009 (0.0%)	0.70	2/8148 (0.0%)
All	All	0.50	1/12118 (0.0%)	0.71	3/16432 (0.0%)

Chiral center outliers are detected by calculating the chiral volume of a chiral center and verifying if the center is modelled as a planar moiety or with the opposite hand. A planarity outlier is detected by checking planarity of atoms in a peptide group, atoms in a mainchain group or atoms of a sidechain that are expected to be planar.

Mol	Chain	#Chirality outliers	#Planarity outliers
1	A	0	1
1	B	0	1
All	All	0	2

All (1) bond length outliers are listed below:

Mol	Chain	Res	Type	Atoms	Z	Observed(Å)	Ideal(Å)
1	B	260	CYS	CB-SG	-7.30	1.69	1.82

All (3) bond angle outliers are listed below:

Mol	Chain	Res	Type	Atoms	Z	Observed(°)	Ideal(°)
1	B	776	CYS	CA-CB-SG	-6.27	102.71	114.00
1	A	181	CYS	CA-CB-SG	6.02	124.83	114.00
1	B	181	CYS	CA-CB-SG	-5.58	103.95	114.00

There are no chirality outliers.

All (2) planarity outliers are listed below:

Mol	Chain	Res	Type	Group
1	A	470	PHE	Peptide
1	B	470	PHE	Peptide

## 5.2 Too-close contacts [i](#)

In the following table, the Non-H and H(model) columns list the number of non-hydrogen atoms and hydrogen atoms in the chain respectively. The H(added) column lists the number of hydrogen atoms added and optimized by MolProbity. The Clashes column lists the number of clashes within the asymmetric unit, whereas Symm-Clashes lists symmetry-related clashes.

Mol	Chain	Non-H	H(model)	H(added)	Clashes	Symm-Clashes
1	A	5986	0	5974	181	0
1	B	5889	0	5873	195	1
2	C	50	0	43	4	0
2	F	50	0	43	4	0
3	D	28	0	25	0	0
3	G	28	0	25	0	0
4	E	61	0	52	0	0
4	H	61	0	52	1	0
5	A	20	0	0	4	0
5	B	20	0	0	2	0
6	A	56	0	52	0	0
6	B	56	0	52	0	1
All	All	12305	0	12191	372	1

The all-atom clashscore is defined as the number of clashes found per 1000 atoms (including hydrogen atoms). The all-atom clashscore for this structure is 15.

The worst 5 of 372 close contacts within the same asymmetric unit are listed below, sorted by their clash magnitude.

Atom-1	Atom-2	Interatomic distance (Å)	Clash overlap (Å)
1:A:185:LYS:HE2	1:A:186:VAL:CG1	1.50	1.40
1:A:185:LYS:CE	1:A:186:VAL:HG12	1.54	1.36
1:B:35:PRO:CD	1:B:60:THR:OG1	1.74	1.35
1:A:185:LYS:CE	1:A:186:VAL:CG1	2.03	1.34
1:B:159:TYR:CD1	1:B:187:CYS:HB2	1.60	1.33

All (1) symmetry-related close contacts are listed below. The label for Atom-2 includes the symmetry operator and encoded unit-cell translations to be applied.

Atom-1	Atom-2	Interatomic distance (Å)	Clash overlap (Å)
1:B:691:GLU:OE2	6:B:902:NAG:O4[4_455]	2.16	0.04

### 5.3 Torsion angles [i](#)

#### 5.3.1 Protein backbone [i](#)

In the following table, the Percentiles column shows the percent Ramachandran outliers of the chain as a percentile score with respect to all X-ray entries followed by that with respect to entries of similar resolution.

The Analysed column shows the number of residues for which the backbone conformation was analysed, and the total number of residues.

Mol	Chain	Analysed	Favoured	Allowed	Outliers	Percentiles	
1	A	735/811 (91%)	684 (93%)	46 (6%)	5 (1%)	22	54
1	B	720/811 (89%)	673 (94%)	42 (6%)	5 (1%)	22	54
All	All	1455/1622 (90%)	1357 (93%)	88 (6%)	10 (1%)	22	54

5 of 10 Ramachandran outliers are listed below:

Mol	Chain	Res	Type
1	A	44	SER
1	B	573	VAL
1	A	781	GLY
1	A	378	VAL
1	A	808	ASP

#### 5.3.2 Protein sidechains [i](#)

In the following table, the Percentiles column shows the percent sidechain outliers of the chain as a percentile score with respect to all X-ray entries followed by that with respect to entries of similar resolution.

The Analysed column shows the number of residues for which the sidechain conformation was analysed, and the total number of residues.

Mol	Chain	Analysed	Rotameric	Outliers	Percentiles	
1	A	691/755 (92%)	650 (94%)	41 (6%)	19	49
1	B	679/755 (90%)	636 (94%)	43 (6%)	18	46
All	All	1370/1510 (91%)	1286 (94%)	84 (6%)	18	48

5 of 84 residues with a non-rotameric sidechain are listed below:

Mol	Chain	Res	Type
1	B	384	GLU
1	B	689	ARG
1	B	465	SER
1	B	581	GLN
1	B	725	SER

Sometimes sidechains can be flipped to improve hydrogen bonding and reduce clashes. 5 of 26 such sidechains are listed below:

Mol	Chain	Res	Type
1	B	262	ASN
1	B	499	ASN
1	B	792	ASN
1	B	469	HIS
1	B	531	HIS

### 5.3.3 RNA [i](#)

There are no RNA molecules in this entry.

## 5.4 Non-standard residues in protein, DNA, RNA chains [i](#)

There are no non-standard protein/DNA/RNA residues in this entry.

## 5.5 Carbohydrates [i](#)

22 monosaccharides are modelled in this entry.

In the following table, the Counts columns list the number of bonds (or angles) for which Mogul statistics could be retrieved, the number of bonds (or angles) that are observed in the model and the number of bonds (or angles) that are defined in the Chemical Component Dictionary. The Link column lists molecule types, if any, to which the group is linked. The Z score for a bond length (or angle) is the number of standard deviations the observed value is removed from the expected value. A bond length (or angle) with  $|Z| > 2$  is considered an outlier worth inspection. RMSZ is the root-mean-square of all Z scores of the bond lengths (or angles).

Mol	Type	Chain	Res	Link	Bond lengths			Bond angles		
					Counts	RMSZ	# Z  > 2	Counts	RMSZ	# Z  > 2
2	NAG	C	1	1,2	14,14,15	0.63	0	17,19,21	1.57	4 (23%)
2	NAG	C	2	2	14,14,15	0.76	1 (7%)	17,19,21	1.51	3 (17%)

Mol	Type	Chain	Res	Link	Bond lengths			Bond angles		
					Counts	RMSZ	# Z  > 2	Counts	RMSZ	# Z  > 2
2	BMA	C	3	2	11,11,12	0.68	0	15,15,17	1.92	4 (26%)
2	MAN	C	4	2	11,11,12	0.78	0	15,15,17	1.31	3 (20%)
3	NAG	D	1	1,3	14,14,15	0.65	0	17,19,21	1.40	4 (23%)
3	NAG	D	2	3	14,14,15	0.73	0	17,19,21	1.40	3 (17%)
4	NAG	E	1	1,4	14,14,15	0.56	0	17,19,21	1.72	3 (17%)
4	NAG	E	2	4	14,14,15	0.96	0	17,19,21	1.64	5 (29%)
4	BMA	E	3	4	11,11,12	0.70	0	15,15,17	1.15	1 (6%)
4	MAN	E	4	4	11,11,12	0.55	0	15,15,17	1.56	3 (20%)
4	MAN	E	5	4	11,11,12	0.61	0	15,15,17	1.53	2 (13%)
2	NAG	F	1	1,2	14,14,15	0.62	0	17,19,21	1.18	2 (11%)
2	NAG	F	2	2	14,14,15	0.97	1 (7%)	17,19,21	1.32	1 (5%)
2	BMA	F	3	2	11,11,12	0.68	0	15,15,17	1.82	4 (26%)
2	MAN	F	4	2	11,11,12	0.61	0	15,15,17	0.96	1 (6%)
3	NAG	G	1	1,3	14,14,15	0.56	0	17,19,21	1.85	4 (23%)
3	NAG	G	2	3	14,14,15	0.70	0	17,19,21	1.88	7 (41%)
4	NAG	H	1	1,4	14,14,15	0.59	0	17,19,21	1.12	1 (5%)
4	NAG	H	2	4	14,14,15	1.04	1 (7%)	17,19,21	1.75	6 (35%)
4	BMA	H	3	4	11,11,12	0.58	0	15,15,17	1.97	3 (20%)
4	MAN	H	4	4	11,11,12	0.53	0	15,15,17	1.59	1 (6%)
4	MAN	H	5	4	11,11,12	0.53	0	15,15,17	1.55	3 (20%)

In the following table, the Chirals column lists the number of chiral outliers, the number of chiral centers analysed, the number of these observed in the model and the number defined in the Chemical Component Dictionary. Similar counts are reported in the Torsion and Rings columns. '-' means no outliers of that kind were identified.

Mol	Type	Chain	Res	Link	Chirals	Torsions	Rings
2	NAG	C	1	1,2	-	0/6/23/26	0/1/1/1
2	NAG	C	2	2	-	2/6/23/26	0/1/1/1
2	BMA	C	3	2	-	1/2/19/22	0/1/1/1
2	MAN	C	4	2	-	2/2/19/22	0/1/1/1
3	NAG	D	1	1,3	-	0/6/23/26	0/1/1/1
3	NAG	D	2	3	-	2/6/23/26	0/1/1/1
4	NAG	E	1	1,4	-	0/6/23/26	0/1/1/1
4	NAG	E	2	4	-	0/6/23/26	0/1/1/1
4	BMA	E	3	4	-	1/2/19/22	0/1/1/1
4	MAN	E	4	4	-	2/2/19/22	0/1/1/1

Continued on next page...



Continued from previous page...

Mol	Type	Chain	Res	Link	Chirals	Torsions	Rings
4	MAN	E	5	4	-	1/2/19/22	0/1/1/1
2	NAG	F	1	1,2	-	0/6/23/26	0/1/1/1
2	NAG	F	2	2	-	2/6/23/26	0/1/1/1
2	BMA	F	3	2	-	0/2/19/22	0/1/1/1
2	MAN	F	4	2	-	2/2/19/22	0/1/1/1
3	NAG	G	1	1,3	-	0/6/23/26	0/1/1/1
3	NAG	G	2	3	-	0/6/23/26	0/1/1/1
4	NAG	H	1	1,4	-	0/6/23/26	0/1/1/1
4	NAG	H	2	4	-	0/6/23/26	0/1/1/1
4	BMA	H	3	4	-	0/2/19/22	0/1/1/1
4	MAN	H	4	4	-	1/2/19/22	0/1/1/1
4	MAN	H	5	4	-	1/2/19/22	0/1/1/1

All (3) bond length outliers are listed below:

Mol	Chain	Res	Type	Atoms	Z	Observed(Å)	Ideal(Å)
4	H	2	NAG	O3-C3	-2.33	1.37	1.43
2	F	2	NAG	O5-C1	-2.32	1.40	1.43
2	C	2	NAG	O5-C1	-2.03	1.40	1.43

The worst 5 of 68 bond angle outliers are listed below:

Mol	Chain	Res	Type	Atoms	Z	Observed(°)	Ideal(°)
4	H	4	MAN	C1-O5-C5	4.70	118.56	112.19
3	G	1	NAG	C1-O5-C5	4.59	118.41	112.19
2	F	2	NAG	O5-C1-C2	-4.49	104.19	111.29
3	G	2	NAG	C1-C2-N2	-4.25	103.23	110.49
2	C	3	BMA	O5-C5-C6	4.05	113.56	107.20

There are no chirality outliers.

5 of 17 torsion outliers are listed below:

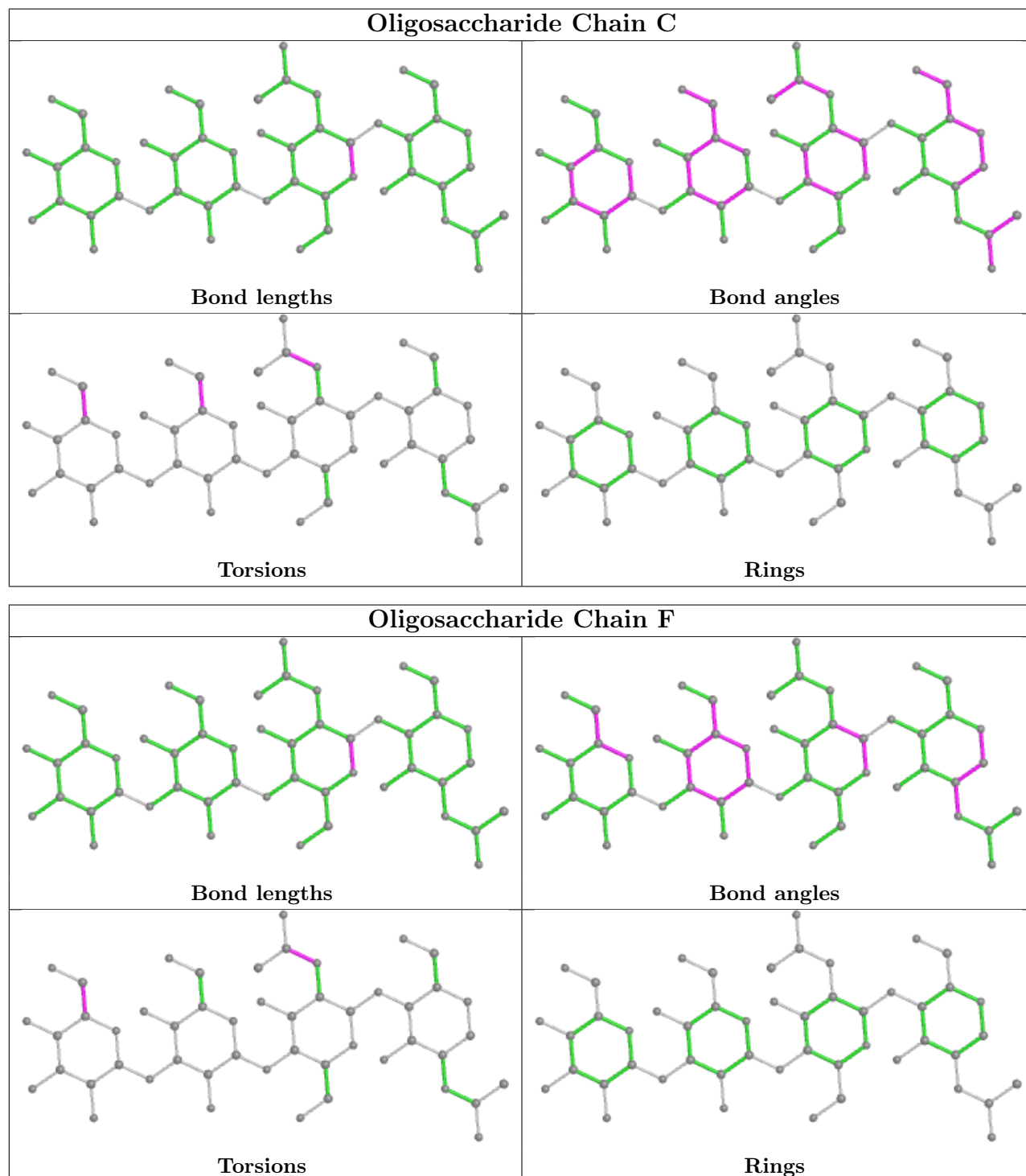
Mol	Chain	Res	Type	Atoms
2	F	4	MAN	O5-C5-C6-O6
2	C	4	MAN	O5-C5-C6-O6
4	E	4	MAN	C4-C5-C6-O6
2	C	4	MAN	C4-C5-C6-O6
2	F	4	MAN	C4-C5-C6-O6

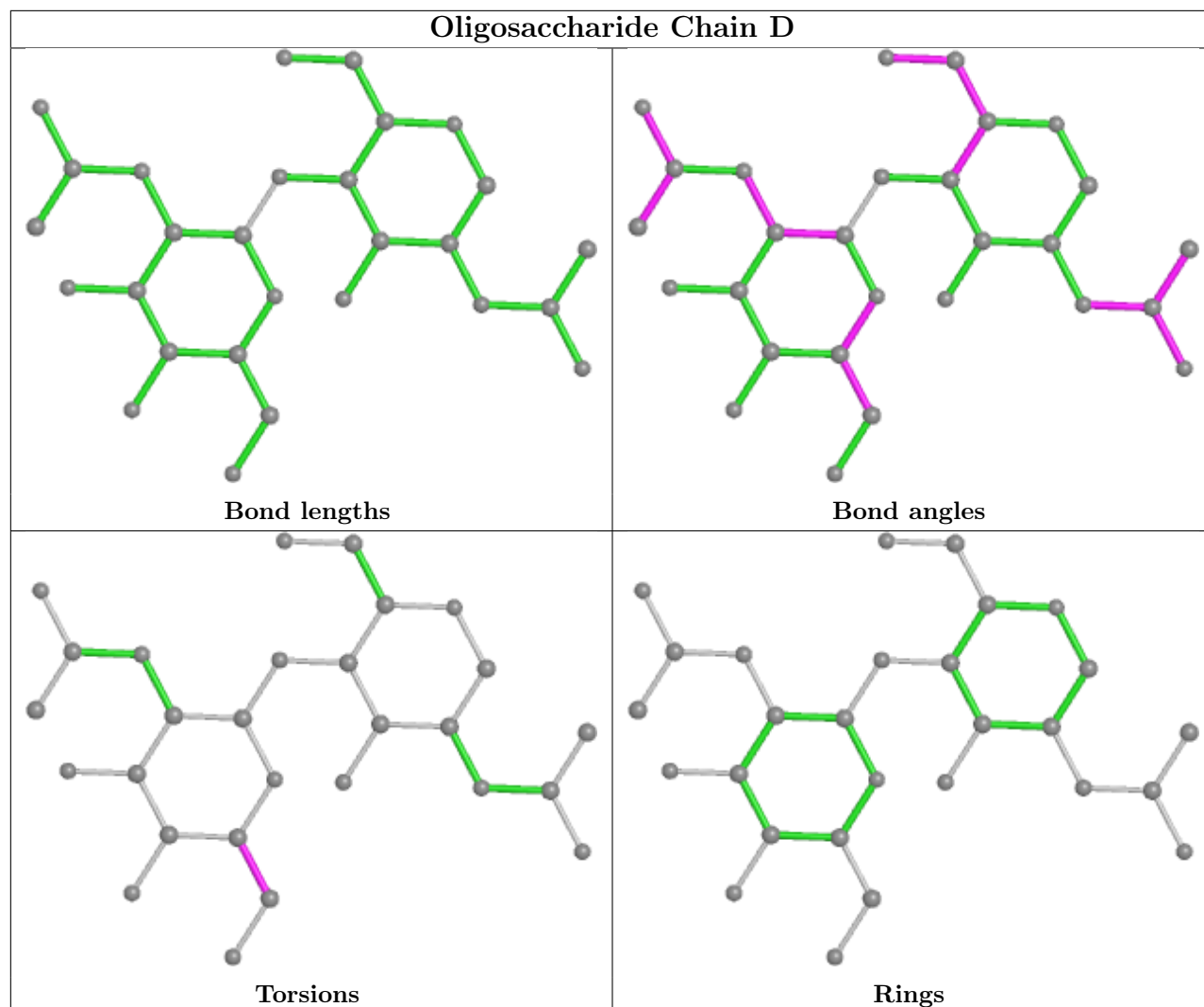
There are no ring outliers.

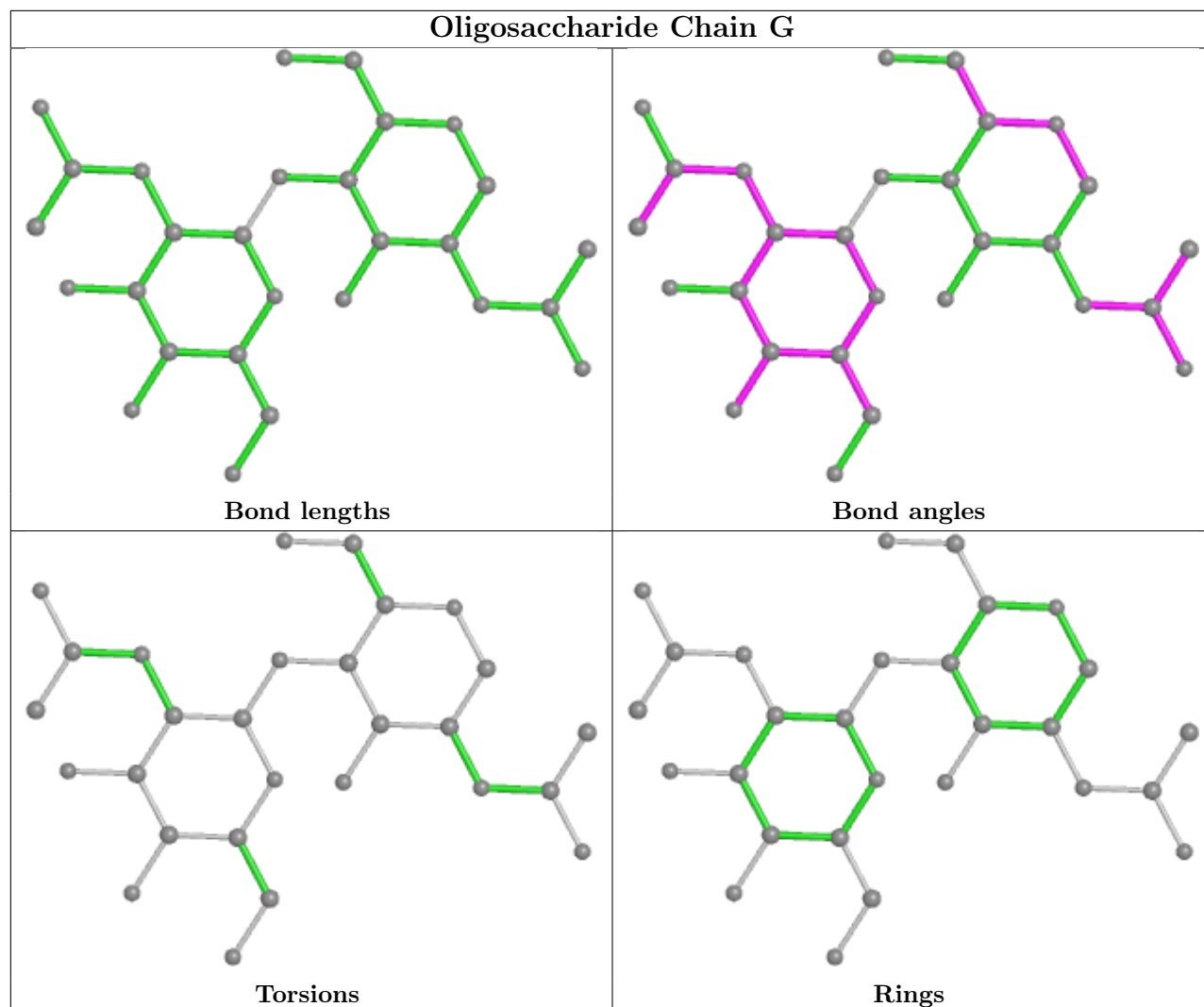
3 monomers are involved in 9 short contacts:

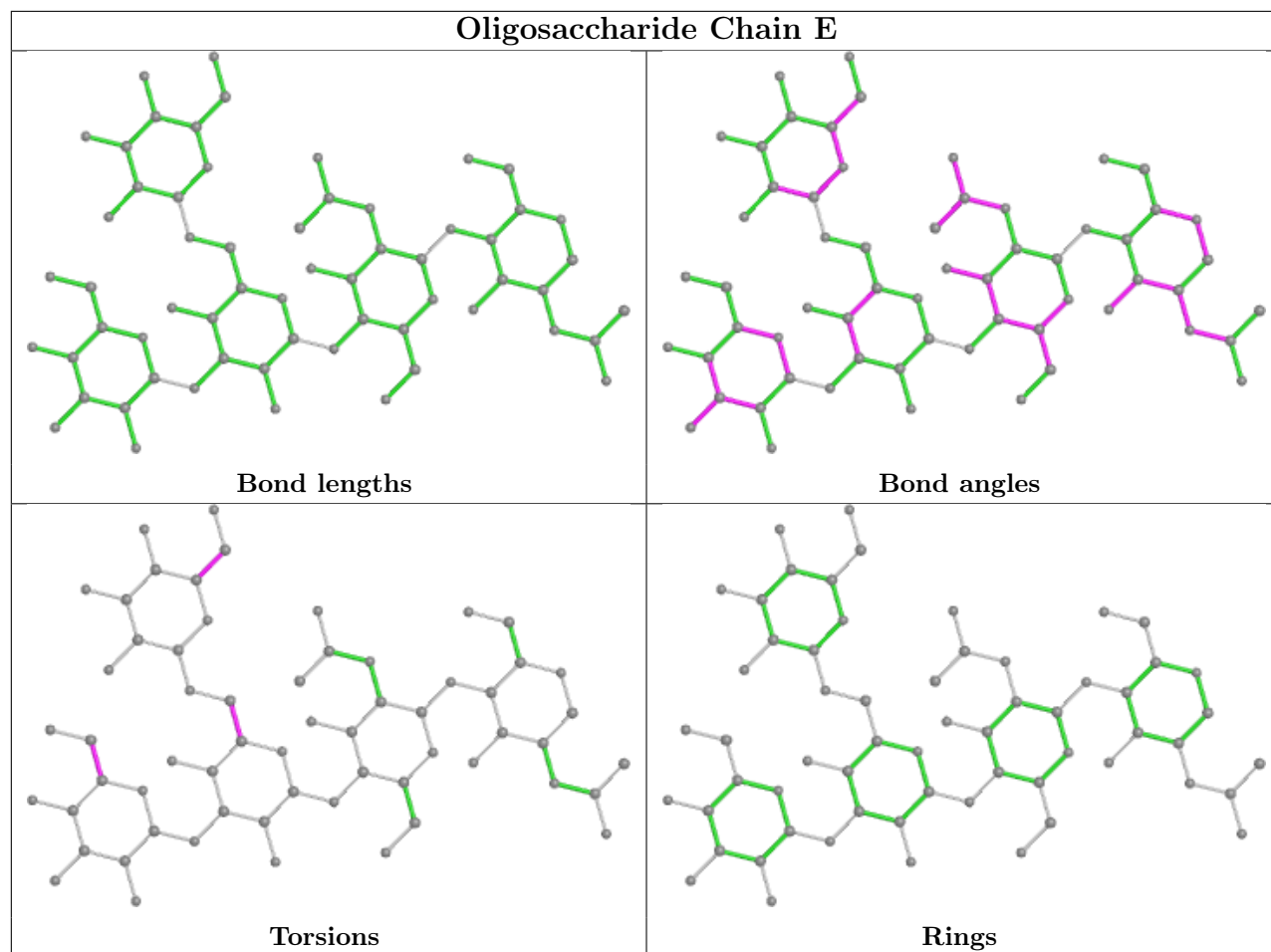
Mol	Chain	Res	Type	Clashes	Symm-Clashes
2	F	2	NAG	4	0
2	C	2	NAG	4	0
4	H	2	NAG	1	0

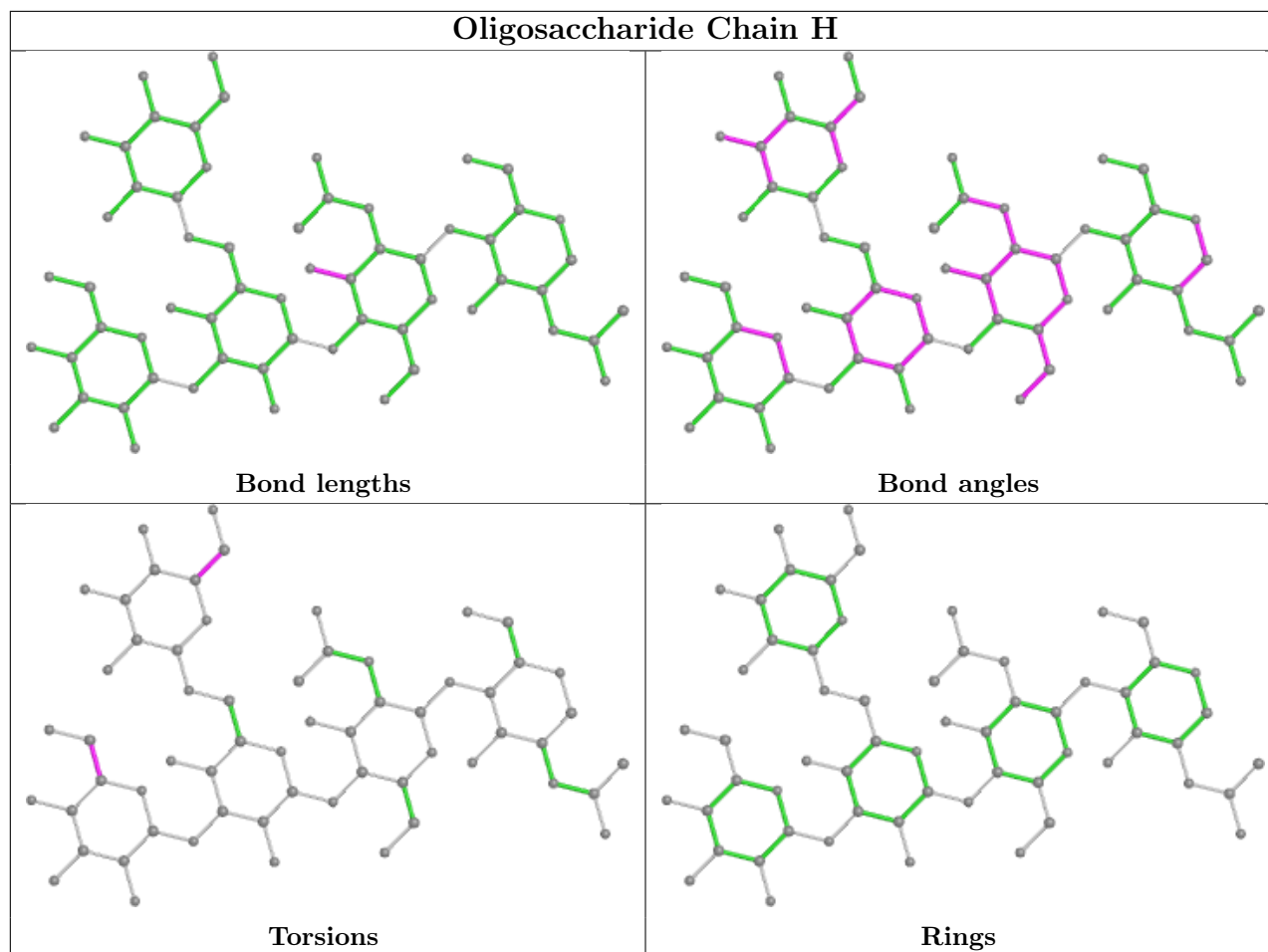
The following is a two-dimensional graphical depiction of Mogul quality analysis of bond lengths, bond angles, torsion angles, and ring geometry for oligosaccharide.











## 5.6 Ligand geometry [i](#)

10 ligands are modelled in this entry.

In the following table, the Counts columns list the number of bonds (or angles) for which Mogul statistics could be retrieved, the number of bonds (or angles) that are observed in the model and the number of bonds (or angles) that are defined in the Chemical Component Dictionary. The Link column lists molecule types, if any, to which the group is linked. The Z score for a bond length (or angle) is the number of standard deviations the observed value is removed from the expected value. A bond length (or angle) with  $|Z| > 2$  is considered an outlier worth inspection. RMSZ is the root-mean-square of all Z scores of the bond lengths (or angles).

Mol	Type	Chain	Res	Link	Bond lengths			Bond angles		
					Counts	RMSZ	# Z  > 2	Counts	RMSZ	# Z  > 2
6	NAG	A	907	1	14,14,15	0.56	0	17,19,21	1.11	1 (5%)
6	NAG	B	902	1	14,14,15	0.70	0	17,19,21	1.70	4 (23%)
5	DY3	B	901	-	19,21,21	2.45	6 (31%)	20,29,29	2.30	10 (50%)
6	NAG	A	916	1	14,14,15	0.77	1 (7%)	17,19,21	0.90	1 (5%)
5	DY3	A	901	-	19,21,21	2.78	6 (31%)	20,29,29	2.43	6 (30%)

Mol	Type	Chain	Res	Link	Bond lengths			Bond angles		
					Counts	RMSZ	# Z  > 2	Counts	RMSZ	# Z  > 2
6	NAG	B	916	1	14,14,15	0.48	0	17,19,21	1.56	3 (17%)
6	NAG	A	902	1	14,14,15	0.57	0	17,19,21	2.51	3 (17%)
6	NAG	B	915	1	14,14,15	0.63	0	17,19,21	1.48	3 (17%)
6	NAG	B	907	1	14,14,15	0.54	0	17,19,21	1.24	1 (5%)
6	NAG	A	915	1	14,14,15	0.59	0	17,19,21	1.22	2 (11%)

In the following table, the Chirals column lists the number of chiral outliers, the number of chiral centers analysed, the number of these observed in the model and the number defined in the Chemical Component Dictionary. Similar counts are reported in the Torsion and Rings columns. '-' means no outliers of that kind were identified.

Mol	Type	Chain	Res	Link	Chirals	Torsions	Rings
6	NAG	A	907	1	-	2/6/23/26	0/1/1/1
6	NAG	B	902	1	-	4/6/23/26	0/1/1/1
5	DY3	B	901	-	-	1/9/10/10	0/2/2/2
6	NAG	A	916	1	-	2/6/23/26	0/1/1/1
5	DY3	A	901	-	-	3/9/10/10	0/2/2/2
6	NAG	B	916	1	-	2/6/23/26	0/1/1/1
6	NAG	A	902	1	-	2/6/23/26	0/1/1/1
6	NAG	B	915	1	-	0/6/23/26	0/1/1/1
6	NAG	B	907	1	-	2/6/23/26	0/1/1/1
6	NAG	A	915	1	-	2/6/23/26	0/1/1/1

The worst 5 of 13 bond length outliers are listed below:

Mol	Chain	Res	Type	Atoms	Z	Observed(Å)	Ideal(Å)
5	A	901	DY3	C4-N1	-9.85	1.32	1.46
5	B	901	DY3	C4-N1	-7.67	1.35	1.46
5	B	901	DY3	C7-C5	4.35	1.48	1.40
5	A	901	DY3	C-N1	-3.57	1.31	1.37
5	A	901	DY3	C7-C5	3.56	1.47	1.40

The worst 5 of 34 bond angle outliers are listed below:

Mol	Chain	Res	Type	Atoms	Z	Observed(°)	Ideal(°)
6	A	902	NAG	C1-O5-C5	7.59	122.48	112.19
5	A	901	DY3	C8-S-C1	7.38	110.49	101.63
6	B	907	NAG	C1-O5-C5	4.60	118.42	112.19
5	B	901	DY3	C6-C4-C2	-4.54	115.75	121.61

*Continued on next page...*

*Continued from previous page...*

Mol	Chain	Res	Type	Atoms	Z	Observed(°)	Ideal(°)
6	A	902	NAG	C8-C7-N2	4.07	122.98	116.10

There are no chirality outliers.

5 of 20 torsion outliers are listed below:

Mol	Chain	Res	Type	Atoms
5	A	901	DY3	N1-C-C9-C10
5	B	901	DY3	N1-C-C9-C10
6	A	916	NAG	O5-C5-C6-O6
6	A	916	NAG	C4-C5-C6-O6
6	B	916	NAG	C4-C5-C6-O6

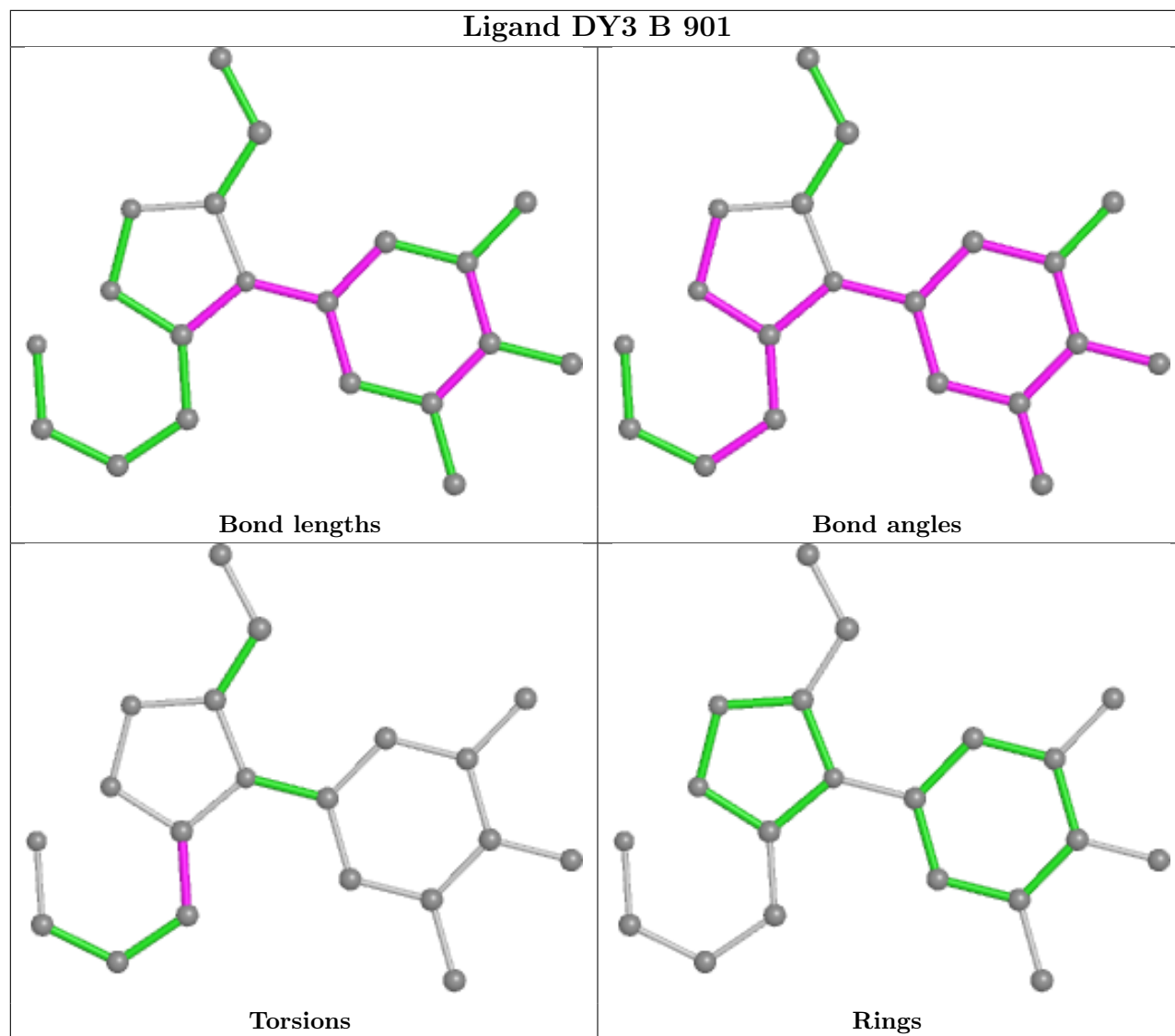
There are no ring outliers.

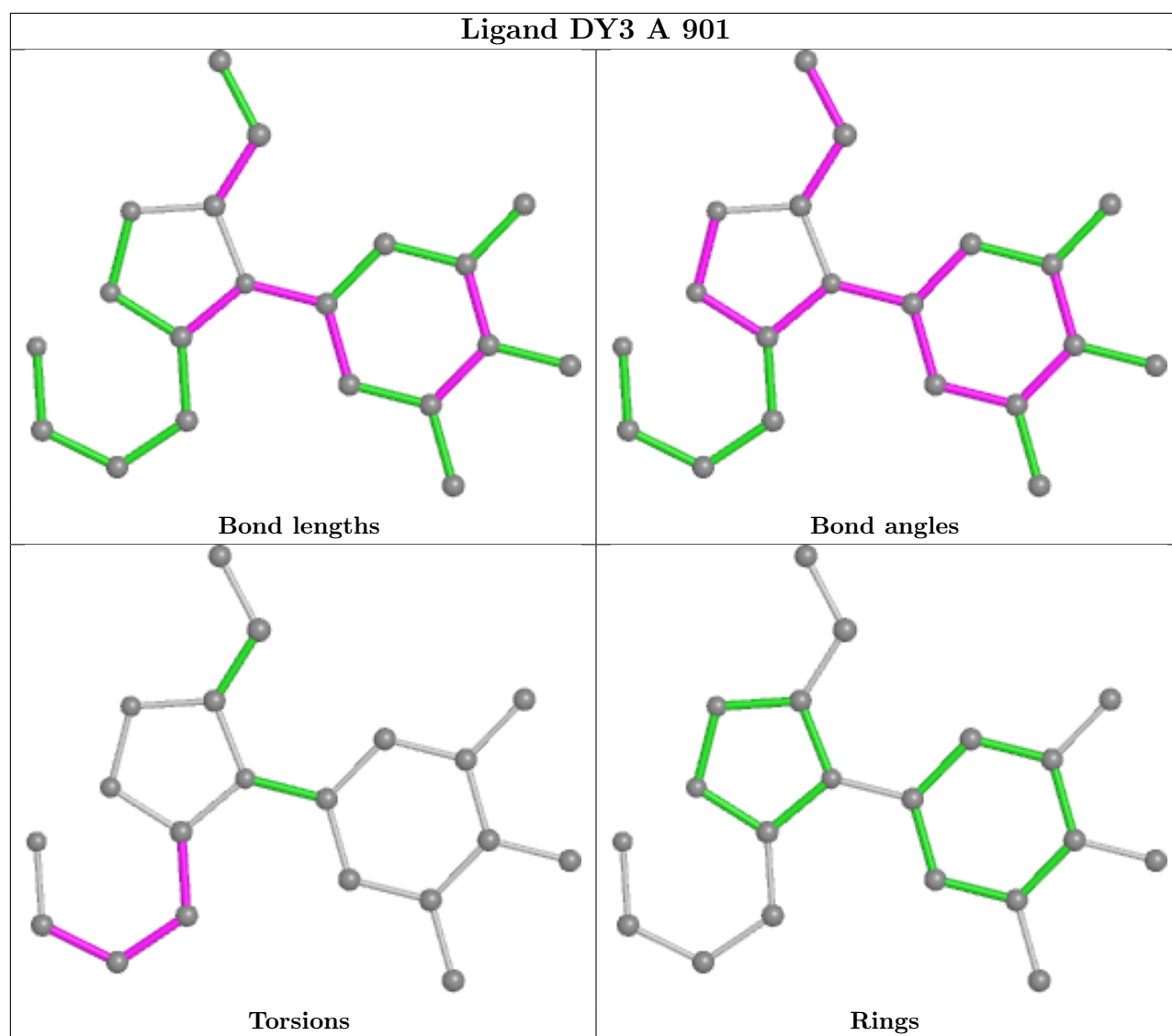
3 monomers are involved in 7 short contacts:

Mol	Chain	Res	Type	Clashes	Symm-Clashes
6	B	902	NAG	0	1
5	B	901	DY3	2	0
5	A	901	DY3	4	0

The following is a two-dimensional graphical depiction of Mogul quality analysis of bond lengths, bond angles, torsion angles, and ring geometry for all instances of the Ligand of Interest. In addition, ligands with molecular weight > 250 and outliers as shown on the validation Tables will also be included. For torsion angles, if less than 5% of the Mogul distribution of torsion angles is within 10 degrees of the torsion angle in question, then that torsion angle is considered an outlier. Any bond that is central to one or more torsion angles identified as an outlier by Mogul will be highlighted in the graph. For rings, the root-mean-square deviation (RMSD) between the ring in question and similar rings identified by Mogul is calculated over all ring torsion angles. If the average RMSD is greater than 60 degrees and the minimal RMSD between the ring in question and any Mogul-identified rings is also greater than 60 degrees, then that ring is considered an outlier. The outliers are highlighted in purple. The color gray indicates Mogul did not find sufficient equivalents in the CSD to analyse the geometry.







## 5.7 Other polymers [i](#)

There are no such residues in this entry.

## 5.8 Polymer linkage issues [i](#)

There are no chain breaks in this entry.

## 6 Fit of model and data [i](#)

### 6.1 Protein, DNA and RNA chains [i](#)

In the following table, the column labelled '#RSRZ > 2' contains the number (and percentage) of RSRZ outliers, followed by percent RSRZ outliers for the chain as percentile scores relative to all X-ray entries and entries of similar resolution. The OWAB column contains the minimum, median, 95<sup>th</sup> percentile and maximum values of the occupancy-weighted average B-factor per residue. The column labelled 'Q < 0.9' lists the number of (and percentage) of residues with an average occupancy less than 0.9.

Mol	Chain	Analysed	<RSRZ>	#RSRZ>2	OWAB(Å <sup>2</sup> )	Q<0.9
1	A	743/811 (91%)	0.15	22 (2%) 50 45	64, 94, 135, 180	0
1	B	730/811 (90%)	0.24	29 (3%) 38 33	66, 102, 152, 179	0
All	All	1473/1622 (90%)	0.19	51 (3%) 44 38	64, 98, 142, 180	0

The worst 5 of 51 RSRZ outliers are listed below:

Mol	Chain	Res	Type	RSRZ
1	B	60	THR	7.0
1	A	183	PHE	5.1
1	A	261	PHE	4.2
1	B	99	ASN	3.8
1	A	751	ILE	3.6

### 6.2 Non-standard residues in protein, DNA, RNA chains [i](#)

There are no non-standard protein/DNA/RNA residues in this entry.

### 6.3 Carbohydrates [i](#)

In the following table, the Atoms column lists the number of modelled atoms in the group and the number defined in the chemical component dictionary. The B-factors column lists the minimum, median, 95<sup>th</sup> percentile and maximum values of B factors of atoms in the group. The column labelled 'Q < 0.9' lists the number of atoms with occupancy less than 0.9.

Mol	Type	Chain	Res	Atoms	RSCC	RSR	B-factors(Å <sup>2</sup> )	Q<0.9
4	MAN	H	5	11/12	0.76	0.18	108,115,138,138	0
2	MAN	C	4	11/12	0.80	0.18	94,116,124,137	0
3	NAG	G	2	14/15	0.83	0.25	70,103,129,146	0
2	MAN	F	4	11/12	0.86	0.18	119,135,148,149	0
2	BMA	C	3	11/12	0.87	0.17	84,95,111,117	0

*Continued on next page...*

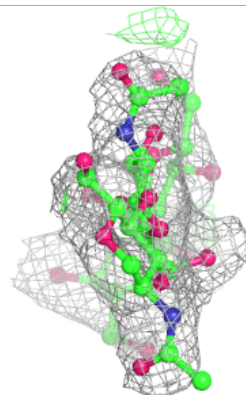
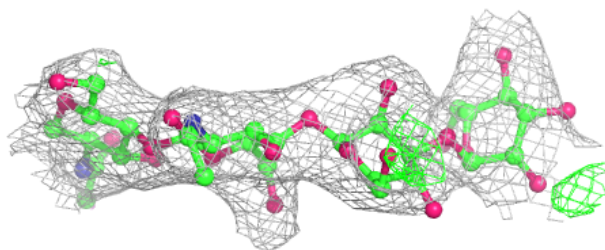
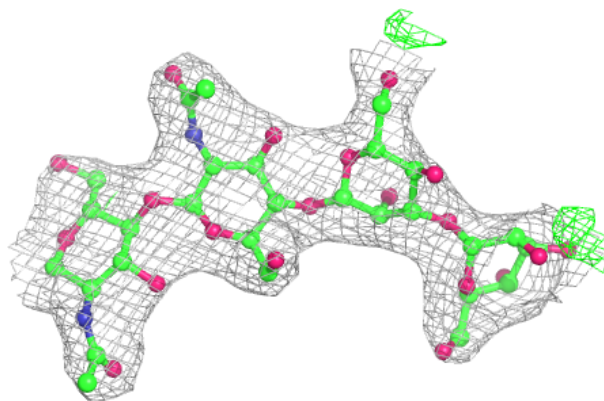
*Continued from previous page...*

Mol	Type	Chain	Res	Atoms	RSCC	RSR	B-factors( $\text{\AA}^2$ )	Q<0.9
4	MAN	E	4	11/12	0.88	0.21	110,123,134,134	0
3	NAG	D	2	14/15	0.89	0.20	81,88,94,99	0
4	MAN	E	5	11/12	0.89	0.18	96,108,115,131	0
2	BMA	F	3	11/12	0.89	0.15	106,113,124,133	0
4	MAN	H	4	11/12	0.91	0.14	117,131,137,143	0
4	BMA	H	3	11/12	0.92	0.15	82,93,114,136	0
4	NAG	E	1	14/15	0.94	0.18	51,66,69,70	0
2	NAG	F	2	14/15	0.95	0.20	78,87,97,99	0
4	NAG	H	1	14/15	0.96	0.16	63,72,76,80	0
4	NAG	H	2	14/15	0.96	0.14	63,72,78,80	0
4	NAG	E	2	14/15	0.96	0.15	54,60,76,77	0
2	NAG	C	2	14/15	0.96	0.17	70,78,84,85	0
3	NAG	G	1	14/15	0.96	0.19	64,73,79,85	0
4	BMA	E	3	11/12	0.97	0.15	82,87,96,106	0
2	NAG	C	1	14/15	0.97	0.22	62,78,84,96	0
3	NAG	D	1	14/15	0.98	0.20	62,66,85,85	0
2	NAG	F	1	14/15	0.98	0.17	71,85,91,107	0

The following is a graphical depiction of the model fit to experimental electron density for oligosaccharide. Each fit is shown from different orientation to approximate a three-dimensional view.

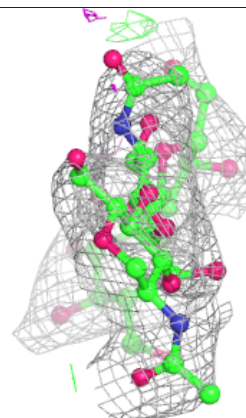
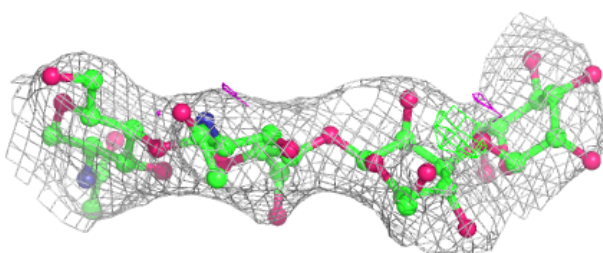
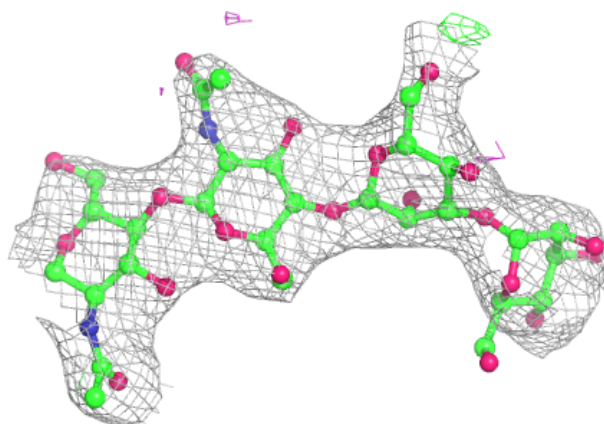
**Electron density around Chain C:**

$2mF_o-DF_c$  (at 0.7 rmsd) in gray  
 $mF_o-DF_c$  (at 3 rmsd) in purple (negative)  
and green (positive)



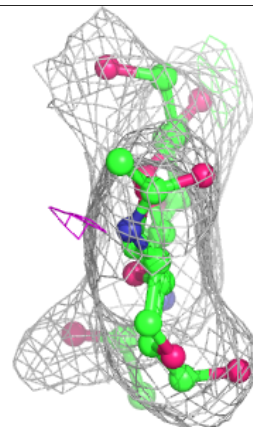
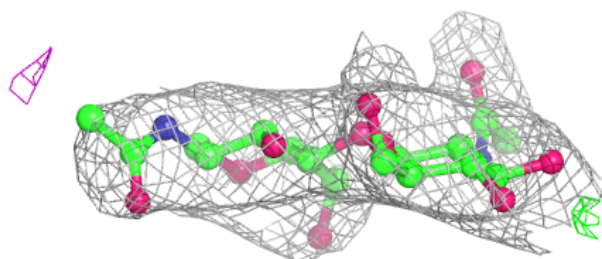
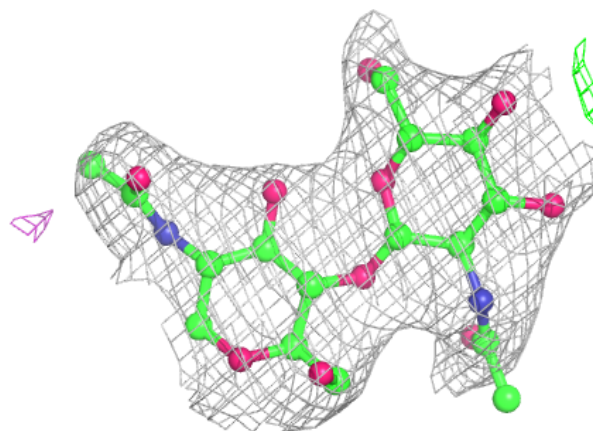
**Electron density around Chain F:**

$2mF_o-DF_c$  (at 0.7 rmsd) in gray  
 $mF_o-DF_c$  (at 3 rmsd) in purple (negative)  
and green (positive)

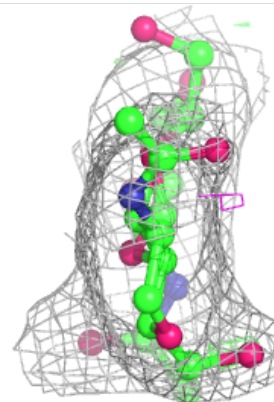
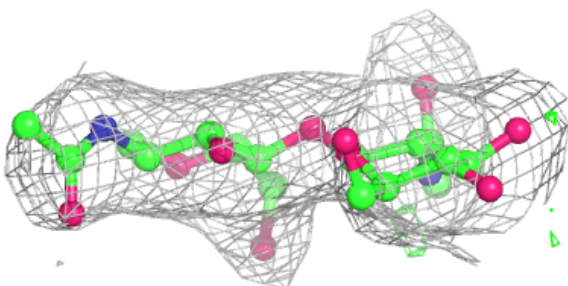
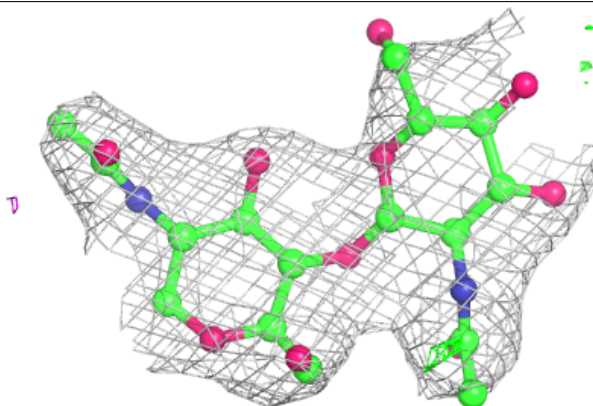


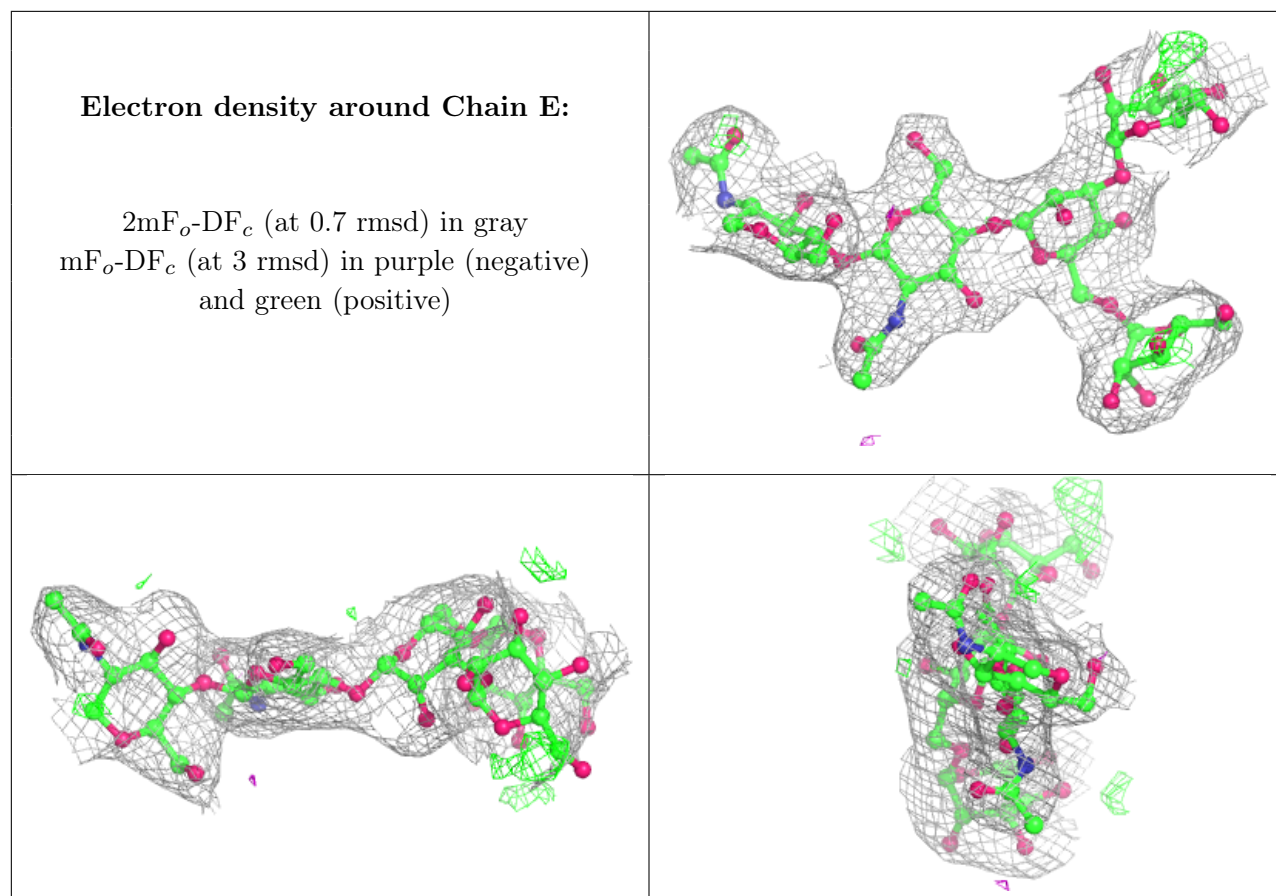
**Electron density around Chain D:**

$2mF_o-DF_c$  (at 0.7 rmsd) in gray  
 $mF_o-DF_c$  (at 3 rmsd) in purple (negative)  
and green (positive)

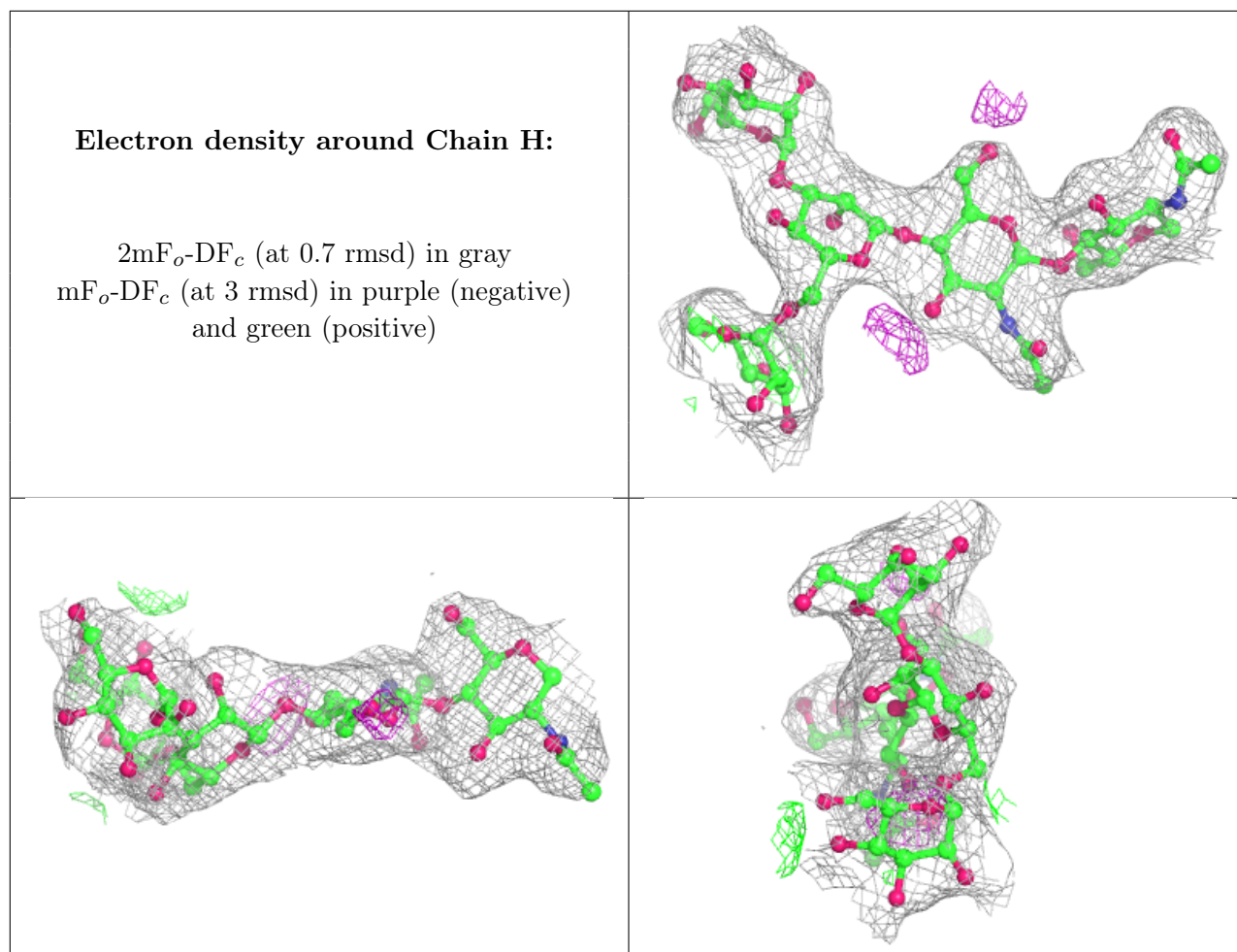
**Electron density around Chain G:**

$2mF_o-DF_c$  (at 0.7 rmsd) in gray  
 $mF_o-DF_c$  (at 3 rmsd) in purple (negative)  
and green (positive)









## 6.4 Ligands [i](#)

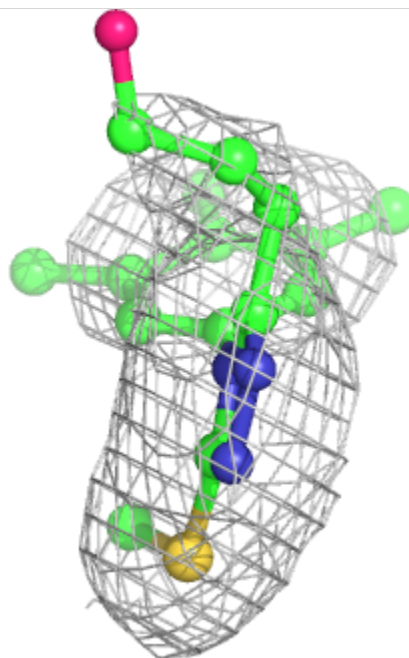
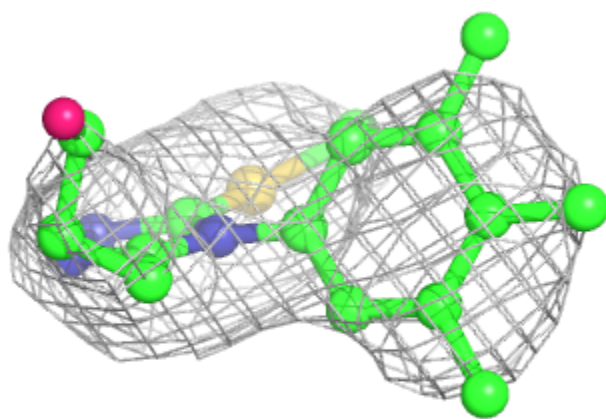
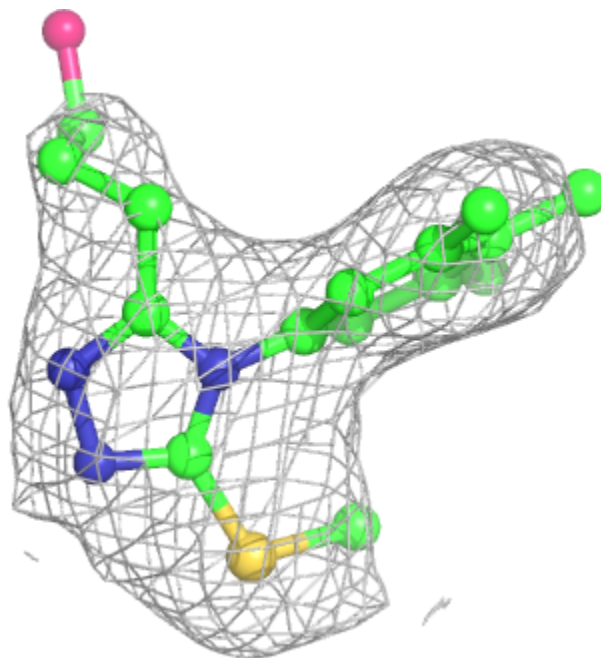
In the following table, the Atoms column lists the number of modelled atoms in the group and the number defined in the chemical component dictionary. The B-factors column lists the minimum, median, 95<sup>th</sup> percentile and maximum values of B factors of atoms in the group. The column labelled 'Q < 0.9' lists the number of atoms with occupancy less than 0.9.

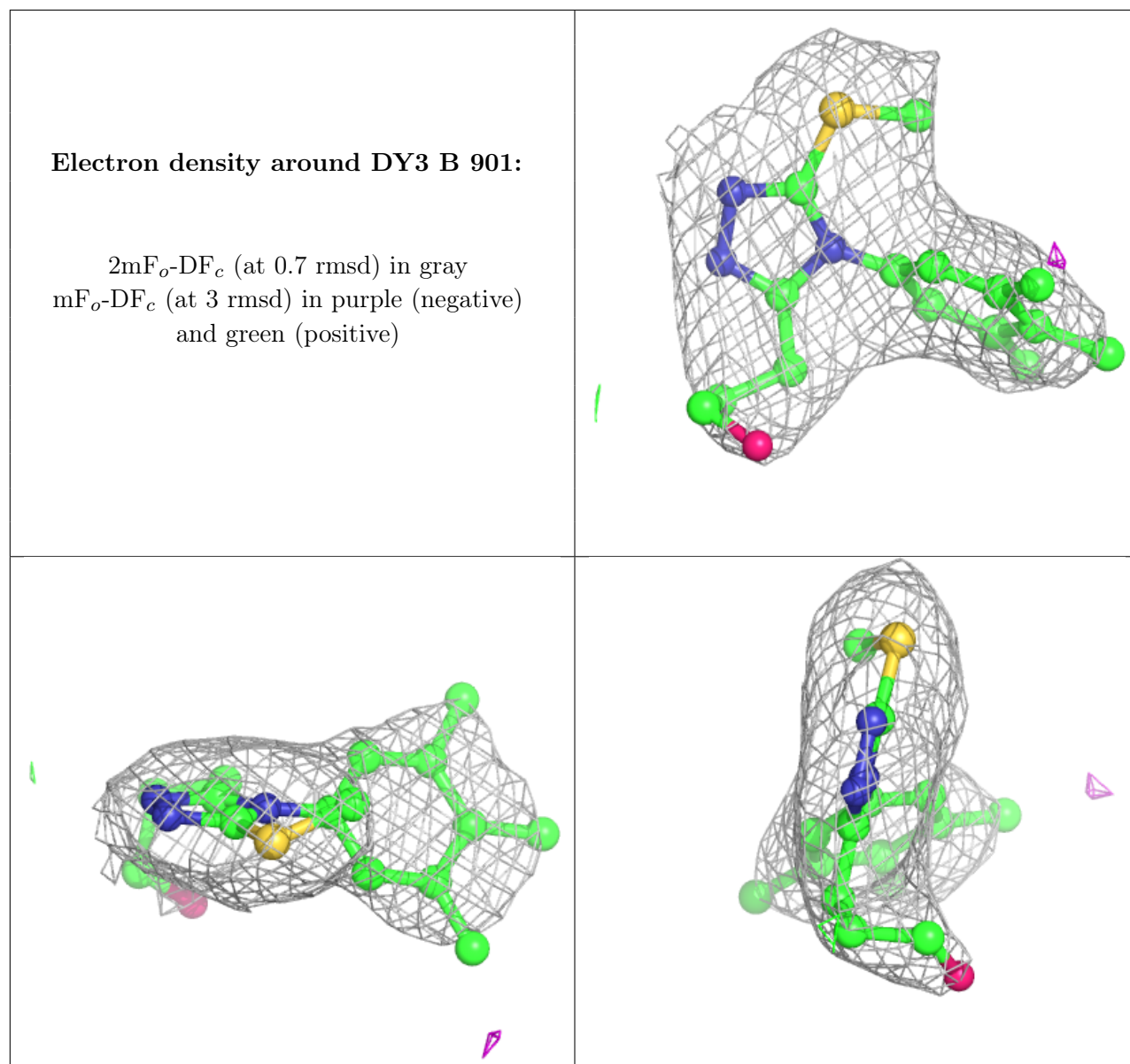
Mol	Type	Chain	Res	Atoms	RSCC	RSR	B-factors(Å <sup>2</sup> )	Q<0.9
6	NAG	B	915	14/15	0.84	0.40	126,138,148,152	0
6	NAG	B	916	14/15	0.84	0.24	117,136,149,160	0
6	NAG	B	907	14/15	0.85	0.29	100,134,144,144	0
6	NAG	A	916	14/15	0.86	0.27	116,135,153,163	0
6	NAG	A	902	14/15	0.87	0.17	84,99,108,111	0
6	NAG	B	902	14/15	0.91	0.34	109,126,138,140	0
6	NAG	A	915	14/15	0.92	0.25	94,105,110,111	0
6	NAG	A	907	14/15	0.95	0.14	96,103,111,116	0
5	DY3	A	901	20/20	0.97	0.29	73,85,105,120	0
5	DY3	B	901	20/20	0.97	0.21	75,89,104,111	0

The following is a graphical depiction of the model fit to experimental electron density of all instances of the Ligand of Interest. In addition, ligands with molecular weight > 250 and outliers as shown on the geometry validation Tables will also be included. Each fit is shown from different orientation to approximate a three-dimensional view.

**Electron density around DY3 A 901:**

$2mF_o-DF_c$  (at 0.7 rmsd) in gray  
 $mF_o-DF_c$  (at 3 rmsd) in purple (negative)  
and green (positive)





## 6.5 Other polymers [i](#)

There are no such residues in this entry.