



Full wwPDB X-ray Structure Validation Report ⓘ

Mar 9, 2018 – 07:20 am GMT

PDB ID : 3L0E
Title : X-ray crystal structure of a Potent Liver X Receptor Modulator
Authors : Gampe Jr., R.T.
Deposited on : 2009-12-09
Resolution : 2.30 Å(reported)

This is a Full wwPDB X-ray Structure Validation Report for a publicly released PDB entry.

We welcome your comments at validation@mail.wwpdb.org

A user guide is available at

<https://www.wwpdb.org/validation/2017/XrayValidationReportHelp>

with specific help available everywhere you see the ⓘ symbol.

The following versions of software and data (see [references ⓘ](#)) were used in the production of this report:

MolProbity : 4.02b-467
Mogul : 1.7.3 (157068), CSD as539be (2018)
Xtriage (Phenix) : 1.13
EDS : trunk30967
Percentile statistics : 20171227.v01 (using entries in the PDB archive December 27th 2017)
Refmac : 5.8.0158
CCP4 : 7.0 (Gargrove)
Ideal geometry (proteins) : Engh & Huber (2001)
Ideal geometry (DNA, RNA) : Parkinson et al. (1996)
Validation Pipeline (wwPDB-VP) : trunk30967

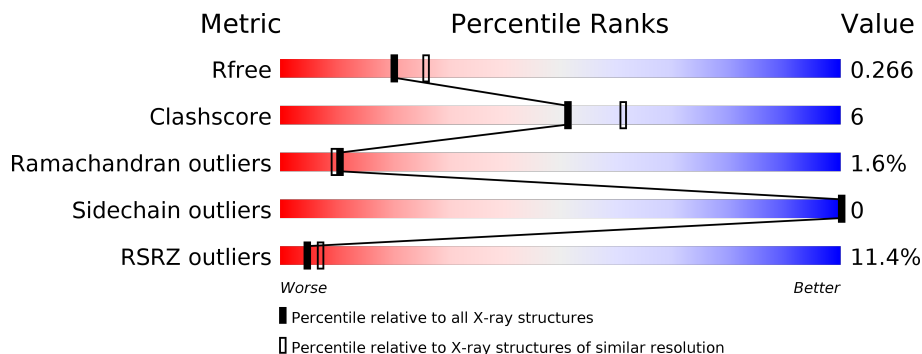
1 Overall quality at a glance

The following experimental techniques were used to determine the structure:

X-RAY DIFFRACTION

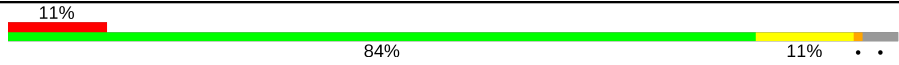

The reported resolution of this entry is 2.30 Å.

Percentile scores (ranging between 0-100) for global validation metrics of the entry are shown in the following graphic. The table shows the number of entries on which the scores are based.



Metric	Whole archive (#Entries)	Similar resolution (#Entries, resolution range(Å))
R_{free}	111664	4477 (2.30-2.30)
Clashscore	122126	5072 (2.30-2.30)
Ramachandran outliers	120053	5022 (2.30-2.30)
Sidechain outliers	120020	5021 (2.30-2.30)
RSRZ outliers	108989	4374 (2.30-2.30)

The table below summarises the geometric issues observed across the polymeric chains and their fit to the electron density. The red, orange, yellow and green segments on the lower bar indicate the fraction of residues that contain outliers for ≥ 3 , 2, 1 and 0 types of geometric quality criteria. A grey segment represents the fraction of residues that are not modelled. The numeric value for each fraction is indicated below the corresponding segment, with a dot representing fractions $\leq 5\%$. The upper red bar (where present) indicates the fraction of residues that have poor fit to the electron density. The numeric value is given above the bar.

Mol	Chain	Length	Quality of chain
1	A	253	
2	B	12	

2 Entry composition [i](#)

There are 4 unique types of molecules in this entry. The entry contains 2146 atoms, of which 0 are hydrogens and 0 are deuteriums.

In the tables below, the ZeroOcc column contains the number of atoms modelled with zero occupancy, the AltConf column contains the number of residues with at least one atom in alternate conformation and the Trace column contains the number of residues modelled with at most 2 atoms.

- Molecule 1 is a protein called Oxysterols receptor LXR-beta.

Mol	Chain	Residues	Atoms					ZeroOcc	AltConf	Trace
			Total	C	N	O	S			
1	A	243	1935	1239	327	364	5	0	1	0

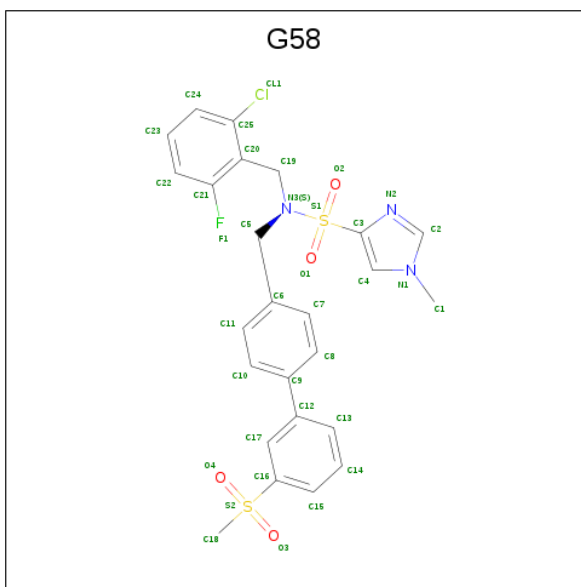
There are 11 discrepancies between the modelled and reference sequences:

Chain	Residue	Modelled	Actual	Comment	Reference
A	209	GLY	-	EXPRESSION TAG	UNP P55055
A	210	SER	-	EXPRESSION TAG	UNP P55055
A	211	HIS	-	EXPRESSION TAG	UNP P55055
A	212	MET	-	EXPRESSION TAG	UNP P55055
A	238	SER	CYS	ENGINEERED	UNP P55055
A	326	SER	CYS	ENGINEERED	UNP P55055
A	361	SER	ARG	ENGINEERED	UNP P55055
A	362	SER	ARG	ENGINEERED	UNP P55055
A	445	ALA	GLN	ENGINEERED	UNP P55055
A	447	ALA	LYS	ENGINEERED	UNP P55055
A	448	ALA	LYS	ENGINEERED	UNP P55055

- Molecule 2 is a protein called Nuclear receptor coactivator 2.

Mol	Chain	Residues	Atoms				ZeroOcc	AltConf	Trace
			Total	C	N	O			
2	B	12	98	63	17	18	0	0	0

- Molecule 3 is N-(2-chloro-6-fluorobenzyl)-1-methyl-N-{{3'-(methylsulfonyl)biphenyl-4-yl}methyl}-1H-imidazole-4-sulfonamide (three-letter code: G58) (formula: C₂₅H₂₃ClFN₃O₄S₂).



Mol	Chain	Residues	Atoms						ZeroOcc	AltConf	
			Total	C	Cl	F	N	O			S
3	A	1	36	25	1	1	3	4	2	0	0

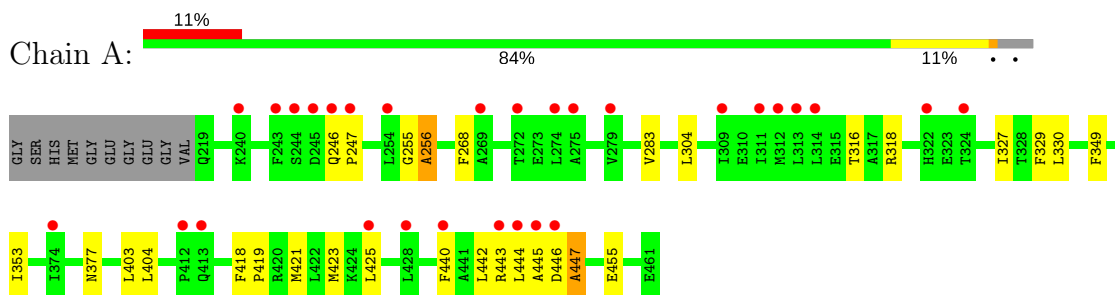
- Molecule 4 is water.

Mol	Chain	Residues	Atoms		ZeroOcc	AltConf
4	A	69	Total	O	0	1
			70	70		
4	B	7	Total	O	0	0
			7	7		

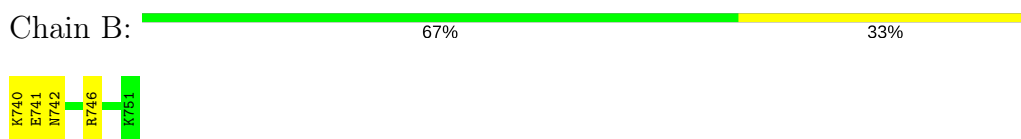
3 Residue-property plots [i](#)

These plots are drawn for all protein, RNA and DNA chains in the entry. The first graphic for a chain summarises the proportions of the various outlier classes displayed in the second graphic. The second graphic shows the sequence view annotated by issues in geometry and electron density. Residues are color-coded according to the number of geometric quality criteria for which they contain at least one outlier: green = 0, yellow = 1, orange = 2 and red = 3 or more. A red dot above a residue indicates a poor fit to the electron density ($RSRZ > 2$). Stretches of 2 or more consecutive residues without any outlier are shown as a green connector. Residues present in the sample, but not in the model, are shown in grey.

- Molecule 1: Oxysterols receptor LXR-beta



- Molecule 2: Nuclear receptor coactivator 2



4 Data and refinement statistics

Property	Value	Source
Space group	P 41 2 2	Depositor
Cell constants a, b, c, α , β , γ	114.86Å 114.86Å 56.41Å 90.00° 90.00° 90.00°	Depositor
Resolution (Å)	27.74 – 2.30 27.74 – 2.30	Depositor EDS
% Data completeness (in resolution range)	96.9 (27.74-2.30) 96.9 (27.74-2.30)	Depositor EDS
R_{merge}	0.07	Depositor
R_{sym}	(Not available)	Depositor
$\langle I/\sigma(I) \rangle$ ¹	4.24 (at 2.31Å)	Xtrriage
Refinement program	REFMAC 6.0.2	Depositor
R, R_{free}	0.202 , 0.237 0.227 , 0.266	Depositor DCC
R_{free} test set	533 reflections (3.19%)	wwPDB-VP
Wilson B-factor (Å ²)	46.6	Xtrriage
Anisotropy	0.738	Xtrriage
Bulk solvent k_{sol} (e/Å ³), B_{sol} (Å ²)	0.32 , 44.1	EDS
L-test for twinning ²	$\langle L \rangle = 0.49$, $\langle L^2 \rangle = 0.32$	Xtrriage
Estimated twinning fraction	No twinning to report.	Xtrriage
F_o, F_c correlation	0.95	EDS
Total number of atoms	2146	wwPDB-VP
Average B, all atoms (Å ²)	48.0	wwPDB-VP

Xtrriage's analysis on translational NCS is as follows: *The largest off-origin peak in the Patterson function is 4.67% of the height of the origin peak. No significant pseudotranslation is detected.*

¹Intensities estimated from amplitudes.

²Theoretical values of $\langle |L| \rangle$, $\langle L^2 \rangle$ for acentric reflections are 0.5, 0.333 respectively for untwinned datasets, and 0.375, 0.2 for perfectly twinned datasets.

5 Model quality

5.1 Standard geometry

Bond lengths and bond angles in the following residue types are not validated in this section: G58

The Z score for a bond length (or angle) is the number of standard deviations the observed value is removed from the expected value. A bond length (or angle) with $|Z| > 5$ is considered an outlier worth inspection. RMSZ is the root-mean-square of all Z scores of the bond lengths (or angles).

Mol	Chain	Bond lengths		Bond angles	
		RMSZ	# Z >5	RMSZ	# Z >5
1	A	0.53	0/1977	0.57	0/2682
2	B	0.51	0/98	0.64	0/130
All	All	0.53	0/2075	0.57	0/2812

There are no bond length outliers.

There are no bond angle outliers.

There are no chirality outliers.

There are no planarity outliers.

5.2 Too-close contacts

In the following table, the Non-H and H(model) columns list the number of non-hydrogen atoms and hydrogen atoms in the chain respectively. The H(added) column lists the number of hydrogen atoms added and optimized by MolProbity. The Clashes column lists the number of clashes within the asymmetric unit, whereas Symm-Clashes lists symmetry related clashes.

Mol	Chain	Non-H	H(model)	H(added)	Clashes	Symm-Clashes
1	A	1935	0	1911	23	0
2	B	98	0	100	3	0
3	A	36	0	23	7	0
4	A	70	0	0	0	0
4	B	7	0	0	0	0
All	All	2146	0	2034	25	0

The all-atom clashscore is defined as the number of clashes found per 1000 atoms (including hydrogen atoms). The all-atom clashscore for this structure is 6.

All (25) close contacts within the same asymmetric unit are listed below, sorted by their clash magnitude.

Atom-1	Atom-2	Interatomic distance (Å)	Clash overlap (Å)
1:A:440:PHE:CE1	1:A:440:PHE:CE2	2.54	0.87
1:A:349:PHE:CE2	1:A:353:ILE:HD11	2.17	0.79
1:A:255:GLY:O	1:A:256:ALA:HB3	1.96	0.65
1:A:268:PHE:HE1	3:A:1:G58:H1A	1.62	0.65
1:A:329:PHE:HB3	3:A:1:G58:C18	2.27	0.65
1:A:440:PHE:O	1:A:444:LEU:HD13	1.98	0.64
1:A:268:PHE:CE1	3:A:1:G58:H1A	2.37	0.60
1:A:377:ASN:HD22	1:A:425:LEU:HD22	1.70	0.56
1:A:349:PHE:CZ	1:A:353:ILE:HD11	2.40	0.56
1:A:255:GLY:O	1:A:256:ALA:CB	2.55	0.55
1:A:329:PHE:HB3	3:A:1:G58:H18	1.89	0.54
1:A:316:THR:CG2	1:A:327:ILE:HD13	2.38	0.54
1:A:403:LEU:HD21	1:A:421:MET:HE2	1.89	0.53
1:A:419:PRO:O	1:A:423:MET:HG2	2.11	0.50
1:A:404:LEU:HD13	1:A:418:PHE:CD2	2.46	0.49
1:A:329:PHE:HB3	3:A:1:G58:H18A	1.93	0.49
1:A:443:ARG:HA	1:A:447:ALA:HB2	1.95	0.48
1:A:455:GLU:O	2:B:740:LYS:NZ	2.42	0.48
1:A:442:LEU:HD21	3:A:1:G58:H1	1.97	0.46
1:A:318:ARG:HG3	1:A:318:ARG:O	2.16	0.46
2:B:742:ASN:O	2:B:746:ARG:HG3	2.15	0.45
1:A:330:LEU:HG	3:A:1:G58:H18	2.00	0.44
2:B:741:GLU:O	2:B:746:ARG:HD2	2.17	0.44
1:A:246:GLN:N	1:A:247:PRO:CD	2.83	0.42
1:A:283:VAL:HG22	1:A:304:LEU:HD13	2.03	0.41

There are no symmetry-related clashes.

5.3 Torsion angles [i](#)

5.3.1 Protein backbone [i](#)

In the following table, the Percentiles column shows the percent Ramachandran outliers of the chain as a percentile score with respect to all X-ray entries followed by that with respect to entries of similar resolution.

The Analysed column shows the number of residues for which the backbone conformation was analysed, and the total number of residues.

Mol	Chain	Analysed	Favoured	Allowed	Outliers	Percentiles
1	A	242/253 (96%)	230 (95%)	8 (3%)	4 (2%)	10 9

Continued on next page...

Continued from previous page...

Mol	Chain	Analysed	Favoured	Allowed	Outliers	Percentiles	
2	B	10/12 (83%)	10 (100%)	0	0	100	100
All	All	252/265 (95%)	240 (95%)	8 (3%)	4 (2%)	11	10

All (4) Ramachandran outliers are listed below:

Mol	Chain	Res	Type
1	A	447	ALA
1	A	256	ALA
1	A	445	ALA
1	A	446	ASP

5.3.2 Protein sidechains [i](#)

In the following table, the Percentiles column shows the percent sidechain outliers of the chain as a percentile score with respect to all X-ray entries followed by that with respect to entries of similar resolution.

The Analysed column shows the number of residues for which the sidechain conformation was analysed, and the total number of residues.

Mol	Chain	Analysed	Rotameric	Outliers	Percentiles	
1	A	206/219 (94%)	206 (100%)	0	100	100
2	B	10/11 (91%)	10 (100%)	0	100	100
All	All	216/230 (94%)	216 (100%)	0	100	100

There are no protein residues with a non-rotameric sidechain to report.

Some sidechains can be flipped to improve hydrogen bonding and reduce clashes. All (7) such sidechains are listed below:

Mol	Chain	Res	Type
1	A	259	GLN
1	A	280	GLN
1	A	321	ASN
1	A	377	ASN
1	A	387	GLN
1	A	396	GLN
1	A	435	HIS

5.3.3 RNA [i](#)

There are no RNA molecules in this entry.

5.4 Non-standard residues in protein, DNA, RNA chains [i](#)

There are no non-standard protein/DNA/RNA residues in this entry.

5.5 Carbohydrates [i](#)

There are no carbohydrates in this entry.

5.6 Ligand geometry [i](#)

1 ligand is modelled in this entry.

In the following table, the Counts columns list the number of bonds (or angles) for which Mogul statistics could be retrieved, the number of bonds (or angles) that are observed in the model and the number of bonds (or angles) that are defined in the Chemical Component Dictionary. The Link column lists molecule types, if any, to which the group is linked. The Z score for a bond length (or angle) is the number of standard deviations the observed value is removed from the expected value. A bond length (or angle) with $|Z| > 2$ is considered an outlier worth inspection. RMSZ is the root-mean-square of all Z scores of the bond lengths (or angles).

Mol	Type	Chain	Res	Link	Bond lengths			Bond angles		
					Counts	RMSZ	# Z > 2	Counts	RMSZ	# Z > 2
3	G58	A	1	-	37,39,39	1.88	4 (10%)	49,58,58	1.98	11 (22%)

In the following table, the Chirals column lists the number of chiral outliers, the number of chiral centers analysed, the number of these observed in the model and the number defined in the Chemical Component Dictionary. Similar counts are reported in the Torsion and Rings columns. '-' means no outliers of that kind were identified.

Mol	Type	Chain	Res	Link	Chirals	Torsions	Rings
3	G58	A	1	-	-	0/24/30/30	0/4/4/4

All (4) bond length outliers are listed below:

Mol	Chain	Res	Type	Atoms	Z	Observed(Å)	Ideal(Å)
3	A	1	G58	C3-S1	-4.44	1.74	1.78
3	A	1	G58	O1-S1	2.08	1.46	1.43
3	A	1	G58	C19-N3	3.36	1.54	1.48
3	A	1	G58	S1-N3	8.68	1.76	1.63

All (11) bond angle outliers are listed below:

Mol	Chain	Res	Type	Atoms	Z	Observed(°)	Ideal(°)
3	A	1	G58	O4-S2-C16	-6.08	103.38	108.29
3	A	1	G58	O2-S1-C3	-4.98	99.20	107.63
3	A	1	G58	O4-S2-C18	-3.66	103.12	108.50
3	A	1	G58	O3-S2-C16	-2.83	106.00	108.29
3	A	1	G58	C5-N3-S1	-2.39	111.71	117.36
3	A	1	G58	F1-C21-C20	2.05	120.01	117.61
3	A	1	G58	O4-S2-O3	2.19	121.80	117.84
3	A	1	G58	C18-S2-C16	3.18	108.36	104.59
3	A	1	G58	O3-S2-C18	3.23	113.25	108.50
3	A	1	G58	O1-S1-N3	3.84	110.26	106.69
3	A	1	G58	O2-S1-N3	5.13	111.45	106.69

There are no chirality outliers.

There are no torsion outliers.

There are no ring outliers.

1 monomer is involved in 7 short contacts:

Mol	Chain	Res	Type	Clashes	Symm-Clashes
3	A	1	G58	7	0

5.7 Other polymers [i](#)

There are no such residues in this entry.

5.8 Polymer linkage issues [i](#)

There are no chain breaks in this entry.

6 Fit of model and data [i](#)

6.1 Protein, DNA and RNA chains [i](#)

In the following table, the column labelled ‘#RSRZ> 2’ contains the number (and percentage) of RSRZ outliers, followed by percent RSRZ outliers for the chain as percentile scores relative to all X-ray entries and entries of similar resolution. The OWAB column contains the minimum, median, 95th percentile and maximum values of the occupancy-weighted average B-factor per residue. The column labelled ‘Q< 0.9’ lists the number of (and percentage) of residues with an average occupancy less than 0.9.

Mol	Chain	Analysed	<RSRZ>	#RSRZ>2	OWAB(Å ²)	Q<0.9
1	A	243/253 (96%)	0.65	29 (11%) 4 6	37, 46, 65, 76	2 (0%)
2	B	12/12 (100%)	-0.15	0 100 100	41, 43, 55, 57	0
All	All	255/265 (96%)	0.62	29 (11%) 5 7	37, 46, 65, 76	2 (0%)

All (29) RSRZ outliers are listed below:

Mol	Chain	Res	Type	RSRZ
1	A	243	PHE	6.1
1	A	247	PRO	5.9
1	A	444	LEU	5.8
1	A	245[A]	ASP	5.0
1	A	445	ALA	4.8
1	A	246	GLN	3.9
1	A	244	SER	3.9
1	A	443	ARG	3.6
1	A	413	GLN	3.5
1	A	446	ASP	3.3
1	A	311	ILE	3.3
1	A	275	ALA	3.2
1	A	440	PHE	3.2
1	A	254	LEU	3.2
1	A	312	MET	2.8
1	A	374	ILE	2.7
1	A	274	LEU	2.7
1	A	314	LEU	2.6
1	A	272	THR	2.6
1	A	322	HIS	2.5
1	A	309	ILE	2.5
1	A	425	LEU	2.3
1	A	240	LYS	2.3
1	A	412	PRO	2.2

Continued on next page...

Continued from previous page...

Mol	Chain	Res	Type	RSRZ
1	A	269	ALA	2.2
1	A	324	THR	2.2
1	A	428	LEU	2.1
1	A	313	LEU	2.1
1	A	279	VAL	2.1

6.2 Non-standard residues in protein, DNA, RNA chains [i](#)

There are no non-standard protein/DNA/RNA residues in this entry.

6.3 Carbohydrates [i](#)

There are no carbohydrates in this entry.

6.4 Ligands [i](#)

In the following table, the Atoms column lists the number of modelled atoms in the group and the number defined in the chemical component dictionary. The B-factors column lists the minimum, median, 95th percentile and maximum values of B factors of atoms in the group. The column labelled 'Q< 0.9' lists the number of atoms with occupancy less than 0.9.

Mol	Type	Chain	Res	Atoms	RSCC	RSR	B-factors(Å ²)	Q<0.9
3	G58	A	1	36/36	0.96	0.22	55,67,71,80	0

6.5 Other polymers [i](#)

There are no such residues in this entry.