



Full wwPDB X-ray Structure Validation Report ⓘ

Sep 24, 2023 – 05:10 AM EDT

PDB ID : 5L05
Title : Crystal structure of catalase-peroxidase KATG of burkholderia pseudomallei treated with INH
Authors : Loewen, P.C.
Deposited on : 2016-07-26
Resolution : 1.70 Å(reported)

This is a Full wwPDB X-ray Structure Validation Report for a publicly released PDB entry.

We welcome your comments at validation@mail.wwpdb.org

A user guide is available at

<https://www.wwpdb.org/validation/2017/XrayValidationReportHelp>

with specific help available everywhere you see the ⓘ symbol.

The types of validation reports are described at

<http://www.wwpdb.org/validation/2017/FAQs#types>.

The following versions of software and data (see [references ⓘ](#)) were used in the production of this report:

MolProbity : 4.02b-467
Mogul : 1.8.5 (274361), CSD as541be (2020)
Xtriage (Phenix) : 1.13
EDS : 2.35.1
buster-report : 1.1.7 (2018)
Percentile statistics : 20191225.v01 (using entries in the PDB archive December 25th 2019)
Refmac : 5.8.0158
CCP4 : 7.0.044 (Gargrove)
Ideal geometry (proteins) : Engh & Huber (2001)
Ideal geometry (DNA, RNA) : Parkinson et al. (1996)
Validation Pipeline (wwPDB-VP) : 2.35.1

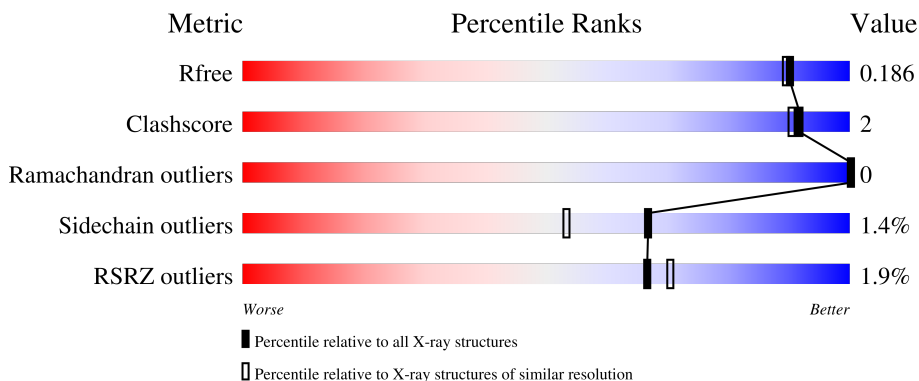
1 Overall quality at a glance

The following experimental techniques were used to determine the structure:

X-RAY DIFFRACTION

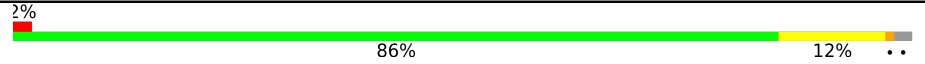
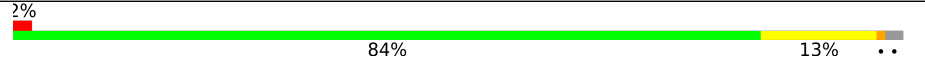
The reported resolution of this entry is 1.70 Å.

Percentile scores (ranging between 0-100) for global validation metrics of the entry are shown in the following graphic. The table shows the number of entries on which the scores are based.



Metric	Whole archive (#Entries)	Similar resolution (#Entries, resolution range(Å))
R_{free}	130704	4298 (1.70-1.70)
Clashscore	141614	4695 (1.70-1.70)
Ramachandran outliers	138981	4610 (1.70-1.70)
Sidechain outliers	138945	4610 (1.70-1.70)
RSRZ outliers	127900	4222 (1.70-1.70)

The table below summarises the geometric issues observed across the polymeric chains and their fit to the electron density. The red, orange, yellow and green segments of the lower bar indicate the fraction of residues that contain outliers for ≥ 3 , 2, 1 and 0 types of geometric quality criteria respectively. A grey segment represents the fraction of residues that are not modelled. The numeric value for each fraction is indicated below the corresponding segment, with a dot representing fractions $\leq 5\%$. The upper red bar (where present) indicates the fraction of residues that have poor fit to the electron density. The numeric value is given above the bar.

Mol	Chain	Length	Quality of chain
1	A	728	
1	B	728	

The following table lists non-polymeric compounds, carbohydrate monomers and non-standard residues in protein, DNA, RNA chains that are outliers for geometric or electron-density-fit criteria:

Mol	Type	Chain	Res	Chirality	Geometry	Clashes	Electron density
2	HP5	A	801	X	-	-	-
2	HP5	B	801	X	-	-	-
5	MPD	A	805	-	X	-	-

2 Entry composition [i](#)

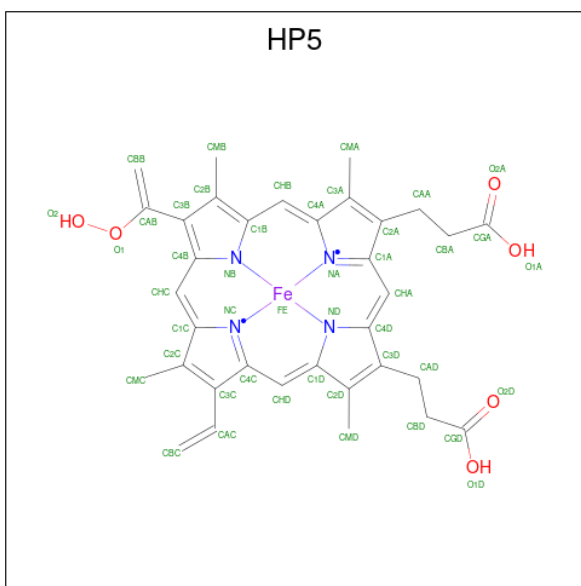
There are 6 unique types of molecules in this entry. The entry contains 13066 atoms, of which 0 are hydrogens and 0 are deuteriums.

In the tables below, the ZeroOcc column contains the number of atoms modelled with zero occupancy, the AltConf column contains the number of residues with at least one atom in alternate conformation and the Trace column contains the number of residues modelled with at most 2 atoms.

- Molecule 1 is a protein called Catalase-peroxidase.

Mol	Chain	Residues	Atoms					ZeroOcc	AltConf	Trace
			Total	C	N	O	S			
1	A	713	Total 5534	C 3496	N 987	O 1037	S 14	0	5	0
1	B	713	Total 5534	C 3496	N 987	O 1037	S 14	0	5	0

- Molecule 2 is Peroxidized Heme Form 2 (three-letter code: HP5) (formula: $C_{34}H_{32}FeN_4O_6$).

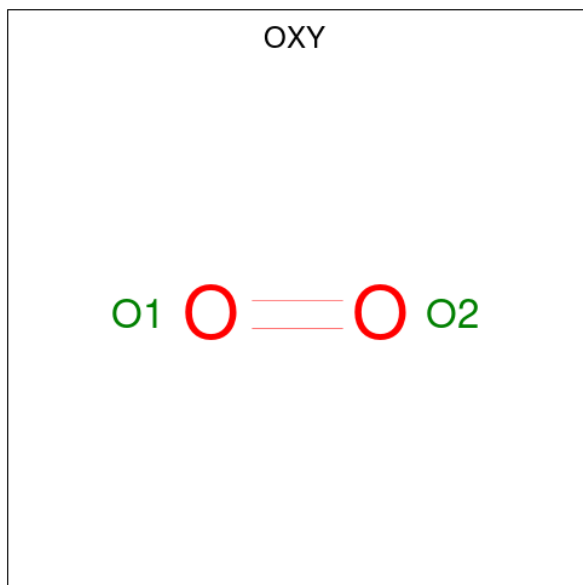


Mol	Chain	Residues	Atoms				ZeroOcc	AltConf	
			Total	C	Fe	N			O
2	A	1	Total 45	C 34	Fe 1	N 4	O 6	0	0
2	B	1	Total 45	C 34	Fe 1	N 4	O 6	0	0

- Molecule 3 is SODIUM ION (three-letter code: NA) (formula: Na).

Mol	Chain	Residues	Atoms	ZeroOcc	AltConf
3	A	1	Total Na 1 1	0	0
3	B	1	Total Na 1 1	0	0

- Molecule 4 is OXYGEN MOLECULE (three-letter code: OXY) (formula: O₂).



Mol	Chain	Residues	Atoms	ZeroOcc	AltConf
4	A	1	Total O 2 2	0	0
4	B	1	Total O 2 2	0	0

- Molecule 5 is (4S)-2-METHYL-2,4-PENTANEDIOL (three-letter code: MPD) (formula: C₆H₁₄O₂).



Mol	Chain	Residues	Atoms	ZeroOcc	AltConf
5	A	1	Total C O 8 6 2	0	0
5	A	1	Total C O 8 6 2	0	0
5	B	1	Total C O 8 6 2	0	0

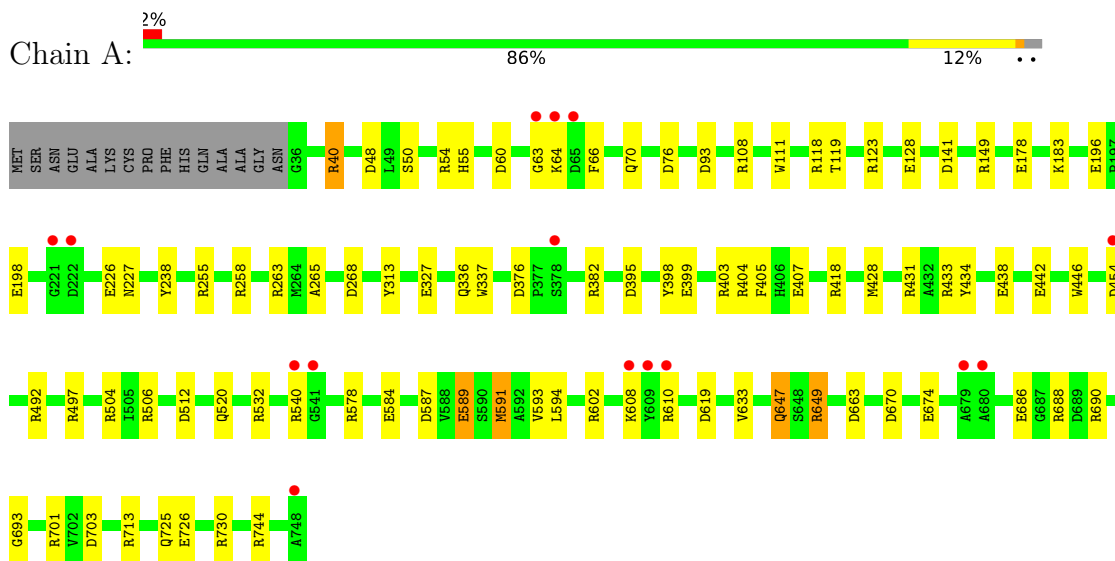
- Molecule 6 is water.

Mol	Chain	Residues	Atoms	ZeroOcc	AltConf
6	A	945	Total O 945 945	0	0
6	B	933	Total O 933 933	0	0

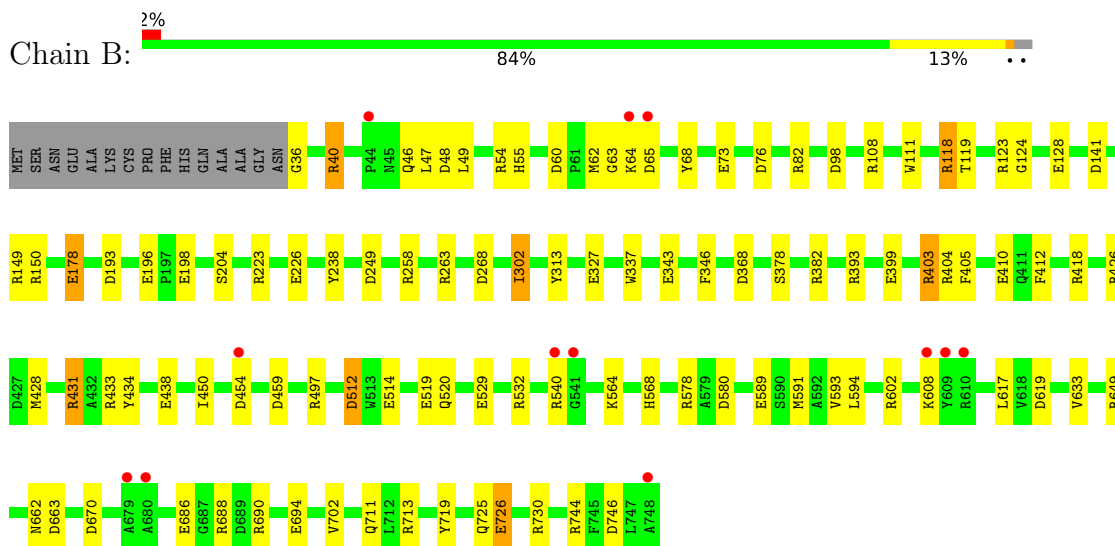
3 Residue-property plots [i](#)

These plots are drawn for all protein, RNA, DNA and oligosaccharide chains in the entry. The first graphic for a chain summarises the proportions of the various outlier classes displayed in the second graphic. The second graphic shows the sequence view annotated by issues in geometry and electron density. Residues are color-coded according to the number of geometric quality criteria for which they contain at least one outlier: green = 0, yellow = 1, orange = 2 and red = 3 or more. A red dot above a residue indicates a poor fit to the electron density ($RSRZ > 2$). Stretches of 2 or more consecutive residues without any outlier are shown as a green connector. Residues present in the sample, but not in the model, are shown in grey.

- Molecule 1: Catalase-peroxidase



- Molecule 1: Catalase-peroxidase



4 Data and refinement statistics

Property	Value	Source
Space group	P 21 21 21	Depositor
Cell constants a, b, c, α , β , γ	100.94Å 115.62Å 175.20Å 90.00° 90.00° 90.00°	Depositor
Resolution (Å)	18.00 – 1.70 17.88 – 1.70	Depositor EDS
% Data completeness (in resolution range)	98.9 (18.00-1.70) 99.0 (17.88-1.70)	Depositor EDS
R_{merge}	(Not available)	Depositor
R_{sym}	0.07	Depositor
$\langle I/\sigma(I) \rangle$ ¹	2.84 (at 1.70Å)	Xtrriage
Refinement program	REFMAC 5.8.0155	Depositor
R, R_{free}	0.145 , 0.176 0.159 , 0.186	Depositor DCC
R_{free} test set	22115 reflections (9.98%)	wwPDB-VP
Wilson B-factor (Å ²)	17.6	Xtrriage
Anisotropy	0.393	Xtrriage
Bulk solvent k_{sol} (e/Å ³), B_{sol} (Å ²)	0.40 , 52.3	EDS
L-test for twinning ²	$\langle L \rangle = 0.50$, $\langle L^2 \rangle = 0.34$	Xtrriage
Estimated twinning fraction	No twinning to report.	Xtrriage
F_o, F_c correlation	0.97	EDS
Total number of atoms	13066	wwPDB-VP
Average B, all atoms (Å ²)	22.0	wwPDB-VP

Xtrriage's analysis on translational NCS is as follows: *The largest off-origin peak in the Patterson function is 2.90% of the height of the origin peak. No significant pseudotranslation is detected.*

¹Intensities estimated from amplitudes.

²Theoretical values of $\langle |L| \rangle$, $\langle L^2 \rangle$ for acentric reflections are 0.5, 0.333 respectively for untwinned datasets, and 0.375, 0.2 for perfectly twinned datasets.

5 Model quality [i](#)

5.1 Standard geometry [i](#)

Bond lengths and bond angles in the following residue types are not validated in this section: HP5, OXY, MPD, NA

The Z score for a bond length (or angle) is the number of standard deviations the observed value is removed from the expected value. A bond length (or angle) with $|Z| > 5$ is considered an outlier worth inspection. RMSZ is the root-mean-square of all Z scores of the bond lengths (or angles).

Mol	Chain	Bond lengths		Bond angles	
		RMSZ	# Z >5	RMSZ	# Z >5
1	A	1.50	42/5691 (0.7%)	1.41	66/7736 (0.9%)
1	B	1.48	47/5691 (0.8%)	1.35	64/7736 (0.8%)
All	All	1.49	89/11382 (0.8%)	1.38	130/15472 (0.8%)

All (89) bond length outliers are listed below:

Mol	Chain	Res	Type	Atoms	Z	Observed(Å)	Ideal(Å)
1	B	73	GLU	CD-OE2	12.50	1.39	1.25
1	A	438	GLU	CD-OE2	9.62	1.36	1.25
1	B	410	GLU	CD-OE2	9.52	1.36	1.25
1	B	63	GLY	N-CA	9.46	1.60	1.46
1	A	532	ARG	CD-NE	-9.43	1.30	1.46
1	A	382	ARG	CZ-NH1	9.26	1.45	1.33
1	B	726	GLU	CG-CD	8.92	1.65	1.51
1	B	434	TYR	CE1-CZ	-8.59	1.27	1.38
1	B	410	GLU	CG-CD	8.50	1.64	1.51
1	B	382	ARG	CZ-NH1	8.35	1.44	1.33
1	A	198	GLU	CD-OE1	8.14	1.34	1.25
1	A	726	GLU	CG-CD	7.93	1.63	1.51
1	A	327	GLU	CG-CD	7.76	1.63	1.51
1	B	327	GLU	CG-CD	7.70	1.63	1.51
1	A	327	GLU	CD-OE1	7.70	1.34	1.25
1	A	532	ARG	CZ-NH2	-7.44	1.23	1.33
1	A	584	GLU	CG-CD	7.31	1.62	1.51
1	B	73	GLU	CG-CD	7.29	1.62	1.51
1	A	63	GLY	N-CA	7.15	1.56	1.46
1	A	725	GLN	CG-CD	7.12	1.67	1.51
1	A	434	TYR	CE1-CZ	-7.12	1.29	1.38
1	B	532	ARG	NE-CZ	-7.12	1.23	1.33
1	A	178	GLU	CD-OE1	-7.04	1.18	1.25
1	B	196	GLU	CG-CD	7.01	1.62	1.51

Continued on next page...

Continued from previous page...

Mol	Chain	Res	Type	Atoms	Z	Observed(Å)	Ideal(Å)
1	A	589	GLU	CD-OE2	6.97	1.33	1.25
1	B	223	ARG	CG-CD	-6.93	1.34	1.51
1	A	438	GLU	CD-OE1	-6.90	1.18	1.25
1	A	647	GLN	CG-CD	6.89	1.66	1.51
1	B	438	GLU	CD-OE2	6.88	1.33	1.25
1	B	512	ASP	CG-OD2	6.82	1.41	1.25
1	B	529	GLU	CG-CD	6.78	1.62	1.51
1	B	226	GLU	CG-CD	6.75	1.62	1.51
1	B	434	TYR	CE2-CZ	-6.72	1.29	1.38
1	B	327	GLU	CD-OE1	6.61	1.32	1.25
1	B	730	ARG	CZ-NH1	6.58	1.41	1.33
1	B	589	GLU	CD-OE2	6.55	1.32	1.25
1	A	128	GLU	CG-CD	6.45	1.61	1.51
1	A	725	GLN	CD-NE2	6.38	1.48	1.32
1	B	65	ASP	CB-CG	6.33	1.65	1.51
1	B	730	ARG	CZ-NH2	6.24	1.41	1.33
1	B	198	GLU	CD-OE1	6.18	1.32	1.25
1	B	178	GLU	CG-CD	6.18	1.61	1.51
1	A	226	GLU	CG-CD	6.12	1.61	1.51
1	B	128	GLU	CG-CD	6.10	1.61	1.51
1	A	512	ASP	CB-CG	6.07	1.64	1.51
1	B	540	ARG	C-O	6.07	1.34	1.23
1	A	178	GLU	CG-CD	6.02	1.60	1.51
1	A	407	GLU	CD-OE2	5.96	1.32	1.25
1	B	686	GLU	CG-CD	5.88	1.60	1.51
1	A	532	ARG	NE-CZ	-5.81	1.25	1.33
1	A	196	GLU	CG-CD	5.77	1.60	1.51
1	B	73	GLU	CB-CG	5.73	1.63	1.52
1	A	434	TYR	CE2-CZ	-5.70	1.31	1.38
1	B	36	GLY	N-CA	5.69	1.54	1.46
1	A	686	GLU	CG-CD	5.68	1.60	1.51
1	A	407	GLU	CG-CD	5.66	1.60	1.51
1	A	198	GLU	CG-CD	5.65	1.60	1.51
1	B	746	ASP	CB-CG	5.65	1.63	1.51
1	A	337	TRP	CE3-CZ3	5.59	1.48	1.38
1	A	584	GLU	CD-OE2	5.53	1.31	1.25
1	A	540	ARG	C-O	5.51	1.33	1.23
1	B	198	GLU	CG-CD	5.44	1.60	1.51
1	B	68	TYR	CE2-CZ	5.43	1.45	1.38
1	B	514	GLU	CD-OE2	-5.40	1.19	1.25
1	A	50[A]	SER	CB-OG	-5.37	1.35	1.42
1	A	50[B]	SER	CB-OG	-5.37	1.35	1.42

Continued on next page...

Continued from previous page...

Mol	Chain	Res	Type	Atoms	Z	Observed(Å)	Ideal(Å)
1	A	70	GLN	CG-CD	5.37	1.63	1.51
1	B	337	TRP	CE3-CZ3	5.36	1.47	1.38
1	A	399	GLU	CD-OE2	5.36	1.31	1.25
1	A	454	ASP	CB-CG	5.33	1.62	1.51
1	B	602	ARG	CZ-NH2	-5.31	1.26	1.33
1	B	418	ARG	CZ-NH2	-5.30	1.26	1.33
1	A	730	ARG	CG-CD	5.28	1.65	1.51
1	B	204	SER	CA-CB	5.27	1.60	1.52
1	A	313	TYR	CE2-CZ	5.22	1.45	1.38
1	B	124	GLY	N-CA	5.20	1.53	1.46
1	B	343	GLU	CD-OE1	5.19	1.31	1.25
1	B	313	TYR	CG-CD1	5.18	1.45	1.39
1	B	434	TYR	CG-CD1	-5.17	1.32	1.39
1	B	694	GLU	CD-OE2	5.14	1.31	1.25
1	B	178	GLU	CD-OE2	5.14	1.31	1.25
1	A	446	TRP	CG-CD1	5.12	1.44	1.36
1	A	693	GLY	C-O	5.11	1.31	1.23
1	A	398	TYR	CE1-CZ	5.07	1.45	1.38
1	B	378	SER	CB-OG	5.07	1.48	1.42
1	A	128	GLU	CD-OE2	5.03	1.31	1.25
1	B	399	GLU	CD-OE1	5.02	1.31	1.25
1	B	726	GLU	CD-OE2	5.02	1.31	1.25
1	B	589	GLU	CG-CD	5.00	1.59	1.51

All (130) bond angle outliers are listed below:

Mol	Chain	Res	Type	Atoms	Z	Observed(°)	Ideal(°)
1	A	532	ARG	NE-CZ-NH2	-32.60	104.00	120.30
1	A	532	ARG	NE-CZ-NH1	24.97	132.79	120.30
1	B	123	ARG	NE-CZ-NH1	14.31	127.45	120.30
1	B	76	ASP	CB-CG-OD2	-13.90	105.79	118.30
1	B	744	ARG	NE-CZ-NH2	-11.52	114.54	120.30
1	A	382	ARG	NE-CZ-NH2	-10.68	114.96	120.30
1	B	108	ARG	NE-CZ-NH1	10.55	125.58	120.30
1	A	713	ARG	NE-CZ-NH1	10.22	125.41	120.30
1	B	393	ARG	NE-CZ-NH2	-10.10	115.25	120.30
1	B	48	ASP	CB-CG-OD1	10.00	127.30	118.30
1	A	258	ARG	NE-CZ-NH1	9.90	125.25	120.30
1	B	108	ARG	NE-CZ-NH2	-9.88	115.36	120.30
1	A	48	ASP	CB-CG-OD1	9.71	127.04	118.30
1	A	376	ASP	CB-CG-OD2	-9.66	109.61	118.30
1	A	433	ARG	NE-CZ-NH1	9.21	124.91	120.30

Continued on next page...

Continued from previous page...

Mol	Chain	Res	Type	Atoms	Z	Observed(°)	Ideal(°)
1	A	433	ARG	NE-CZ-NH2	-9.14	115.73	120.30
1	B	268	ASP	CB-CG-OD1	9.11	126.50	118.30
1	A	713	ARG	NE-CZ-NH2	-9.07	115.76	120.30
1	A	76	ASP	CB-CG-OD2	-8.99	110.21	118.30
1	A	434	TYR	CB-CG-CD1	8.96	126.38	121.00
1	B	688	ARG	NE-CZ-NH1	8.94	124.77	120.30
1	A	619	ASP	CB-CG-OD1	-8.90	110.29	118.30
1	B	713	ARG	NE-CZ-NH1	8.89	124.75	120.30
1	B	123	ARG	NE-CZ-NH2	-8.80	115.90	120.30
1	B	82	ARG	NE-CZ-NH1	8.77	124.68	120.30
1	B	744	ARG	NE-CZ-NH1	8.51	124.56	120.30
1	A	404	ARG	NE-CZ-NH2	-8.39	116.11	120.30
1	B	633	VAL	CG1-CB-CG2	-8.36	97.52	110.90
1	A	701	ARG	NE-CZ-NH1	8.31	124.46	120.30
1	B	649	ARG	NE-CZ-NH2	-8.28	116.16	120.30
1	A	404	ARG	NE-CZ-NH1	8.22	124.41	120.30
1	A	108	ARG	NE-CZ-NH1	8.17	124.39	120.30
1	A	532	ARG	CD-NE-CZ	8.02	134.83	123.60
1	A	40	ARG	NE-CZ-NH1	7.93	124.27	120.30
1	A	123	ARG	NE-CZ-NH1	7.82	124.21	120.30
1	B	532	ARG	NE-CZ-NH2	-7.72	116.44	120.30
1	B	40	ARG	NE-CZ-NH1	7.61	124.11	120.30
1	B	405	PHE	CB-CG-CD1	7.61	126.12	120.80
1	B	382	ARG	NE-CZ-NH1	7.59	124.10	120.30
1	B	719	TYR	CB-CG-CD1	-7.57	116.46	121.00
1	B	150	ARG	NE-CZ-NH2	-7.52	116.54	120.30
1	A	744	ARG	NE-CZ-NH2	-7.41	116.60	120.30
1	B	118	ARG	NE-CZ-NH1	7.33	123.96	120.30
1	B	512	ASP	CB-CG-OD1	-7.31	111.72	118.30
1	B	412	PHE	CB-CG-CD1	7.16	125.81	120.80
1	B	149	ARG	NE-CZ-NH2	-7.04	116.78	120.30
1	A	403[A]	ARG	NE-CZ-NH1	-7.04	116.78	120.30
1	A	403[B]	ARG	NE-CZ-NH1	-7.04	116.78	120.30
1	A	263	ARG	NE-CZ-NH2	-6.95	116.82	120.30
1	A	633	VAL	CG1-CB-CG2	-6.94	99.79	110.90
1	B	76	ASP	OD1-CG-OD2	6.91	136.43	123.30
1	B	434	TYR	CB-CG-CD1	6.90	125.14	121.00
1	B	150	ARG	NE-CZ-NH1	6.90	123.75	120.30
1	B	405	PHE	CB-CG-CD2	-6.88	115.98	120.80
1	B	54	ARG	CG-CD-NE	-6.69	97.76	111.80
1	A	405	PHE	CB-CG-CD2	-6.67	116.13	120.80
1	A	602	ARG	NE-CZ-NH2	-6.66	116.97	120.30

Continued on next page...

Continued from previous page...

Mol	Chain	Res	Type	Atoms	Z	Observed(°)	Ideal(°)
1	B	198	GLU	OE1-CD-OE2	-6.61	115.37	123.30
1	B	258	ARG	NE-CZ-NH1	6.61	123.60	120.30
1	A	66	PHE	CG-CD2-CE2	-6.58	113.56	120.80
1	B	404	ARG	NE-CZ-NH1	6.58	123.59	120.30
1	A	649	ARG	NE-CZ-NH1	6.56	123.58	120.30
1	A	382	ARG	NE-CZ-NH1	6.55	123.58	120.30
1	A	149	ARG	NE-CZ-NH1	6.52	123.56	120.30
1	B	564	LYS	CD-CE-NZ	-6.47	96.81	111.70
1	B	433	ARG	NE-CZ-NH1	6.47	123.53	120.30
1	B	450	ILE	CA-CB-CG1	-6.46	98.73	111.00
1	A	198	GLU	CG-CD-OE1	6.39	131.09	118.30
1	A	649	ARG	NE-CZ-NH2	-6.38	117.11	120.30
1	B	578	ARG	NE-CZ-NH1	6.38	123.49	120.30
1	A	60	ASP	CB-CG-OD1	6.29	123.97	118.30
1	A	93	ASP	CB-CG-OD1	6.29	123.96	118.30
1	A	670	ASP	CB-CG-OD2	-6.26	112.67	118.30
1	A	744	ARG	NE-CZ-NH1	6.26	123.43	120.30
1	A	730	ARG	NE-CZ-NH1	6.21	123.41	120.30
1	B	263	ARG	NE-CZ-NH2	-6.20	117.20	120.30
1	A	431	ARG	NE-CZ-NH2	6.12	123.36	120.30
1	A	492	ARG	NE-CZ-NH2	-6.11	117.24	120.30
1	B	649	ARG	NE-CZ-NH1	6.11	123.36	120.30
1	B	118	ARG	NE-CZ-NH2	-6.05	117.28	120.30
1	B	670	ASP	CB-CG-OD2	-6.04	112.87	118.30
1	B	198	GLU	CG-CD-OE1	6.00	130.29	118.30
1	B	497	ARG	NE-CZ-NH2	-5.99	117.31	120.30
1	A	418	ARG	NE-CZ-NH2	-5.96	117.32	120.30
1	A	703	ASP	CB-CG-OD2	5.96	123.66	118.30
1	B	428	MET	CA-CB-CG	-5.95	103.19	113.30
1	A	591	MET	CG-SD-CE	-5.88	90.80	100.20
1	A	442	GLU	OE1-CD-OE2	5.88	130.35	123.30
1	A	428	MET	CA-CB-CG	-5.86	103.33	113.30
1	B	249	ASP	CB-CG-OD1	5.86	123.57	118.30
1	B	580	ASP	CB-CG-OD1	-5.84	113.04	118.30
1	A	663	ASP	CB-CG-OD2	-5.83	113.05	118.30
1	A	198	GLU	OE1-CD-OE2	-5.73	116.43	123.30
1	B	193	ASP	CB-CG-OD2	-5.72	113.15	118.30
1	A	431	ARG	NE-CZ-NH1	-5.72	117.44	120.30
1	A	108	ARG	NE-CZ-NH2	-5.71	117.44	120.30
1	B	540	ARG	NE-CZ-NH1	5.69	123.14	120.30
1	A	149	ARG	NE-CZ-NH2	-5.67	117.47	120.30
1	A	405	PHE	CB-CG-CD1	5.66	124.76	120.80

Continued on next page...

Continued from previous page...

Mol	Chain	Res	Type	Atoms	Z	Observed(°)	Ideal(°)
1	B	459	ASP	CB-CG-OD1	5.65	123.39	118.30
1	B	403[A]	ARG	NE-CZ-NH1	-5.62	117.49	120.30
1	B	403[B]	ARG	NE-CZ-NH1	-5.62	117.49	120.30
1	A	578	ARG	NE-CZ-NH1	5.61	123.10	120.30
1	B	48	ASP	CB-CG-OD2	-5.54	113.32	118.30
1	A	540	ARG	NE-CZ-NH1	5.53	123.06	120.30
1	A	54	ARG	NE-CZ-NH1	5.53	123.06	120.30
1	A	506	ARG	NE-CZ-NH2	-5.53	117.54	120.30
1	B	619	ASP	CB-CG-OD1	-5.52	113.33	118.30
1	A	395	ASP	CB-CG-OD1	5.47	123.22	118.30
1	A	268	ASP	CB-CG-OD2	-5.41	113.43	118.30
1	A	670	ASP	CB-CG-OD1	5.41	123.17	118.30
1	A	497	ARG	NE-CZ-NH2	-5.40	117.60	120.30
1	B	62	MET	C-N-CA	-5.37	111.03	122.30
1	A	690	ARG	NE-CZ-NH1	-5.33	117.64	120.30
1	B	663	ASP	CB-CG-OD2	-5.28	113.54	118.30
1	B	302	ILE	CG1-CB-CG2	-5.27	99.81	111.40
1	A	587	ASP	CB-CG-OD1	5.26	123.04	118.30
1	B	368	ASP	CB-CG-OD2	-5.26	113.57	118.30
1	B	46	GLN	CA-CB-CG	5.25	124.94	113.40
1	B	431	ARG	NE-CZ-NH2	5.22	122.91	120.30
1	A	688	ARG	NE-CZ-NH1	5.21	122.91	120.30
1	A	263	ARG	NE-CZ-NH1	5.17	122.89	120.30
1	B	313	TYR	CG-CD1-CE1	-5.14	117.19	121.30
1	A	674	GLU	OE1-CD-OE2	5.10	129.42	123.30
1	B	98	ASP	CB-CG-OD1	5.10	122.89	118.30
1	B	454	ASP	CB-CG-OD1	5.08	122.87	118.30
1	B	726	GLU	OE1-CD-OE2	-5.07	117.22	123.30
1	B	60	ASP	CB-CG-OD1	5.06	122.86	118.30
1	A	70	GLN	CA-CB-CG	5.04	124.48	113.40
1	A	454	ASP	CB-CG-OD1	5.00	122.80	118.30

There are no chirality outliers.

There are no planarity outliers.

5.2 Too-close contacts

In the following table, the Non-H and H(model) columns list the number of non-hydrogen atoms and hydrogen atoms in the chain respectively. The H(added) column lists the number of hydrogen atoms added and optimized by MolProbity. The Clashes column lists the number of clashes within the asymmetric unit, whereas Symm-Clashes lists symmetry-related clashes.

Mol	Chain	Non-H	H(model)	H(added)	Clashes	Symm-Clashes
1	A	5534	0	5363	14	0
1	B	5534	0	5363	20	0
2	A	45	0	0	0	0
2	B	45	0	0	0	0
3	A	1	0	0	0	0
3	B	1	0	0	0	0
4	A	2	0	0	0	0
4	B	2	0	0	0	0
5	A	16	0	28	1	0
5	B	8	0	14	0	0
6	A	945	0	0	10	0
6	B	933	0	0	11	0
All	All	13066	0	10768	35	0

The all-atom clashscore is defined as the number of clashes found per 1000 atoms (including hydrogen atoms). The all-atom clashscore for this structure is 2.

All (35) close contacts within the same asymmetric unit are listed below, sorted by their clash magnitude.

Atom-1	Atom-2	Interatomic distance (Å)	Clash overlap (Å)
1:B:520:GLN:HG3	6:B:1177:HOH:O	1.55	1.06
1:A:119[B]:THR:HG21	6:A:1115:HOH:O	1.65	0.96
1:A:520:GLN:HG3	6:A:983:HOH:O	1.73	0.89
5:A:804:MPD:O2	5:A:804:MPD:O4	1.85	0.87
1:B:119[B]:THR:HG22	1:B:593:VAL:HG21	1.59	0.85
1:B:119[B]:THR:HG23	6:B:1153:HOH:O	1.87	0.74
1:A:589:GLU:HG2	6:A:1287:HOH:O	1.90	0.72
1:B:512:ASP:OD1	6:B:902:HOH:O	2.10	0.70
1:B:519:GLU:OE1	6:B:903:HOH:O	2.11	0.68
1:A:336:GLN:HG2	6:A:1551:HOH:O	1.95	0.65
1:A:647:GLN:HG2	6:A:1396:HOH:O	1.98	0.64
1:A:55:HIS:CE1	6:A:1098:HOH:O	2.55	0.59
1:B:591:MET:SD	1:B:594:LEU:HD12	2.45	0.57
1:B:111:TRP:HZ3	1:B:238:TYR:HH	1.51	0.57
1:B:55:HIS:NE2	6:B:909:HOH:O	2.32	0.57
1:B:711[A]:GLN:NE2	6:B:912:HOH:O	2.36	0.56
1:B:568:HIS:ND1	1:B:726:GLU:OE1	2.38	0.56
1:B:119[B]:THR:HG21	6:B:1681:HOH:O	2.07	0.54
1:A:255:ARG:HD2	6:A:1624:HOH:O	2.08	0.54
1:B:178:GLU:OE1	6:B:905:HOH:O	2.19	0.50
1:A:593:VAL:HG13	6:A:988:HOH:O	2.12	0.49
1:B:662:ASN:H	1:B:725:GLN:HE22	1.59	0.49

Continued on next page...

Continued from previous page...

Atom-1	Atom-2	Interatomic distance (Å)	Clash overlap (Å)
1:A:591:MET:SD	1:A:594:LEU:HD12	2.55	0.47
1:B:512:ASP:HB2	6:B:1466:HOH:O	2.15	0.46
1:A:111:TRP:HZ3	1:A:238:TYR:HH	1.64	0.46
1:A:504:ARG:HD2	6:A:1038:HOH:O	2.15	0.46
1:A:183:LYS:NZ	6:A:928:HOH:O	2.50	0.45
1:B:346:PHE:CZ	1:B:403[A]:ARG:HG2	2.51	0.45
1:B:426[B]:ARG:HA	1:B:426[B]:ARG:HD2	1.86	0.44
1:A:119[A]:THR:CG2	1:A:265:ALA:HB2	2.49	0.43
1:B:49:LEU:HD12	1:B:711[B]:GLN:CD	2.39	0.43
1:B:617:LEU:HD22	1:B:702:VAL:HG13	2.02	0.42
1:A:119[B]:THR:HG23	1:A:593:VAL:HG11	2.01	0.42
1:B:431:ARG:HD3	6:B:1583:HOH:O	2.20	0.41
1:B:47:LEU:HB2	6:B:1235:HOH:O	2.20	0.40

There are no symmetry-related clashes.

5.3 Torsion angles [i](#)

5.3.1 Protein backbone [i](#)

In the following table, the Percentiles column shows the percent Ramachandran outliers of the chain as a percentile score with respect to all X-ray entries followed by that with respect to entries of similar resolution.

The Analysed column shows the number of residues for which the backbone conformation was analysed, and the total number of residues.

Mol	Chain	Analysed	Favoured	Allowed	Outliers	Percentiles	
1	A	716/728 (98%)	708 (99%)	8 (1%)	0	100	100
1	B	716/728 (98%)	708 (99%)	8 (1%)	0	100	100
All	All	1432/1456 (98%)	1416 (99%)	16 (1%)	0	100	100

There are no Ramachandran outliers to report.

5.3.2 Protein sidechains [i](#)

In the following table, the Percentiles column shows the percent sidechain outliers of the chain as a percentile score with respect to all X-ray entries followed by that with respect to entries of similar resolution.

The Analysed column shows the number of residues for which the sidechain conformation was analysed, and the total number of residues.

Mol	Chain	Analysed	Rotameric	Outliers	Percentiles	
1	A	555/561 (99%)	547 (99%)	8 (1%)	67	53
1	B	555/561 (99%)	548 (99%)	7 (1%)	69	56
All	All	1110/1122 (99%)	1095 (99%)	15 (1%)	67	53

All (15) residues with a non-rotameric sidechain are listed below:

Mol	Chain	Res	Type
1	A	40	ARG
1	A	64	LYS
1	A	118	ARG
1	A	141	ASP
1	A	227	ASN
1	A	608	LYS
1	A	610	ARG
1	A	649	ARG
1	B	40	ARG
1	B	64	LYS
1	B	118	ARG
1	B	141	ASP
1	B	302	ILE
1	B	608	LYS
1	B	690	ARG

Sometimes sidechains can be flipped to improve hydrogen bonding and reduce clashes. All (2) such sidechains are listed below:

Mol	Chain	Res	Type
1	A	647	GLN
1	B	725	GLN

5.3.3 RNA [i](#)

There are no RNA molecules in this entry.

5.4 Non-standard residues in protein, DNA, RNA chains [i](#)

There are no non-standard protein/DNA/RNA residues in this entry.

5.5 Carbohydrates [i](#)

There are no monosaccharides in this entry.

5.6 Ligand geometry [i](#)

Of 9 ligands modelled in this entry, 2 are monoatomic - leaving 7 for Mogul analysis.

In the following table, the Counts columns list the number of bonds (or angles) for which Mogul statistics could be retrieved, the number of bonds (or angles) that are observed in the model and the number of bonds (or angles) that are defined in the Chemical Component Dictionary. The Link column lists molecule types, if any, to which the group is linked. The Z score for a bond length (or angle) is the number of standard deviations the observed value is removed from the expected value. A bond length (or angle) with $|Z| > 2$ is considered an outlier worth inspection. RMSZ is the root-mean-square of all Z scores of the bond lengths (or angles).

Mol	Type	Chain	Res	Link	Bond lengths			Bond angles		
					Counts	RMSZ	# Z > 2	Counts	RMSZ	# Z > 2
5	MPD	A	805	-	7,7,7	0.90	0	9,10,10	1.64	4 (44%)
2	HP5	A	801	1,6	49,52,52	2.55	16 (32%)	55,85,85	7.81	20 (36%)
4	OXY	A	803	-	1,1,1	0.50	0	-	-	-
4	OXY	B	803	-	1,1,1	0.68	0	-	-	-
2	HP5	B	801	1,6	49,52,52	2.53	19 (38%)	55,85,85	8.30	26 (47%)
5	MPD	B	804	-	7,7,7	0.88	1 (14%)	9,10,10	2.06	3 (33%)
5	MPD	A	804	-	7,7,7	0.60	0	9,10,10	1.48	2 (22%)

In the following table, the Chirals column lists the number of chiral outliers, the number of chiral centers analysed, the number of these observed in the model and the number defined in the Chemical Component Dictionary. Similar counts are reported in the Torsion and Rings columns. '-' means no outliers of that kind were identified.

Mol	Type	Chain	Res	Link	Chirals	Torsions	Rings
5	MPD	A	805	-	-	5/5/5/5	-
2	HP5	A	801	1,6	1/1/4/9	3/12/58/58	-
2	HP5	B	801	1,6	1/1/4/9	3/12/58/58	-
5	MPD	B	804	-	-	1/5/5/5	-
5	MPD	A	804	-	-	2/5/5/5	-

All (36) bond length outliers are listed below:

Mol	Chain	Res	Type	Atoms	Z	Observed(Å)	Ideal(Å)
2	A	801	HP5	C1B-NB	6.17	1.48	1.36

Continued on next page...

Continued from previous page...

Mol	Chain	Res	Type	Atoms	Z	Observed(Å)	Ideal(Å)
2	B	801	HP5	C4A-NA	5.95	1.50	1.40
2	A	801	HP5	C4D-C3D	-5.72	1.35	1.45
2	A	801	HP5	C4B-NB	5.58	1.47	1.36
2	A	801	HP5	C4A-C3A	-5.05	1.34	1.44
2	B	801	HP5	C4B-CHC	-4.57	1.28	1.41
2	B	801	HP5	C4A-C3A	-4.51	1.35	1.44
2	B	801	HP5	FE-ND	4.50	2.13	1.95
2	B	801	HP5	C1D-ND	-4.46	1.31	1.39
2	B	801	HP5	C4D-C3D	-4.43	1.37	1.45
2	A	801	HP5	CHA-C1A	-4.33	1.29	1.39
2	B	801	HP5	C4D-ND	4.27	1.48	1.39
2	B	801	HP5	C4B-NB	4.19	1.44	1.36
2	A	801	HP5	O1-CAB	4.16	1.54	1.36
2	A	801	HP5	C4B-CHC	-4.11	1.29	1.41
2	B	801	HP5	C1A-C2A	-3.89	1.38	1.45
2	B	801	HP5	C1B-NB	3.86	1.44	1.36
2	B	801	HP5	CHA-C4D	-3.73	1.31	1.38
2	B	801	HP5	CBB-CAB	-3.72	1.25	1.33
2	B	801	HP5	O1-CAB	3.60	1.51	1.36
2	A	801	HP5	C1B-CHB	-3.55	1.31	1.41
2	A	801	HP5	CMC-C2C	-3.47	1.43	1.50
2	A	801	HP5	C3B-CAB	-3.44	1.43	1.49
2	A	801	HP5	FE-NA	3.34	2.15	1.97
2	A	801	HP5	FE-ND	3.15	2.08	1.95
2	B	801	HP5	CHD-C1D	3.14	1.44	1.38
2	A	801	HP5	C1A-C2A	-2.95	1.40	1.45
2	A	801	HP5	O2A-CGA	2.54	1.30	1.22
2	A	801	HP5	C1C-C2C	-2.47	1.39	1.44
2	B	801	HP5	CAD-C3D	-2.20	1.45	1.51
2	B	801	HP5	O2A-CGA	2.17	1.29	1.22
2	B	801	HP5	FE-NB	2.14	2.14	1.96
2	B	801	HP5	C3B-C2B	-2.12	1.35	1.39
2	B	801	HP5	CBA-CGA	2.11	1.55	1.50
5	B	804	MPD	C3-C2	-2.10	1.47	1.53
2	A	801	HP5	FE-NB	2.08	2.13	1.96

All (55) bond angle outliers are listed below:

Mol	Chain	Res	Type	Atoms	Z	Observed(°)	Ideal(°)
2	A	801	HP5	CHA-C4D-ND	-27.20	95.02	124.44
2	B	801	HP5	CHA-C4D-ND	-24.52	97.91	124.44
2	A	801	HP5	CHA-C1A-NA	-24.19	98.13	124.42

Continued on next page...

Continued from previous page...

Mol	Chain	Res	Type	Atoms	Z	Observed(°)	Ideal(°)
2	B	801	HP5	CHC-C1C-NC	-23.92	94.83	124.38
2	B	801	HP5	CHA-C1A-NA	-22.89	99.55	124.42
2	B	801	HP5	CHB-C4A-NA	-22.01	97.18	124.38
2	A	801	HP5	C4D-CHA-C1A	21.35	172.12	126.06
2	B	801	HP5	C4D-CHA-C1A	21.14	171.66	126.06
2	A	801	HP5	CHA-C1A-C2A	18.43	151.93	124.84
2	A	801	HP5	CHB-C4A-NA	-18.24	101.84	124.38
2	B	801	HP5	CHA-C4D-C3D	18.13	154.30	124.94
2	A	801	HP5	CHC-C1C-NC	-17.94	102.21	124.38
2	A	801	HP5	CHA-C4D-C3D	14.87	149.02	124.94
2	B	801	HP5	CHA-C1A-C2A	14.16	145.65	124.84
2	B	801	HP5	CMB-C2B-C1B	-10.42	112.45	128.46
2	A	801	HP5	CMB-C2B-C1B	-9.33	114.13	128.46
2	B	801	HP5	CHB-C4A-C3A	9.02	151.68	126.72
2	B	801	HP5	C3C-C2C-C1C	-7.26	101.10	106.49
2	A	801	HP5	CHB-C4A-C3A	7.17	146.55	126.72
2	A	801	HP5	CMB-C2B-C3B	7.14	138.04	124.68
2	B	801	HP5	CHC-C1C-C2C	6.90	145.82	126.72
2	B	801	HP5	CMB-C2B-C3B	6.78	137.36	124.68
2	A	801	HP5	CHC-C1C-C2C	6.70	145.25	126.72
2	B	801	HP5	C4A-NA-C1A	-6.60	98.25	105.07
2	B	801	HP5	C1C-NC-C4C	-6.49	98.37	105.07
2	B	801	HP5	C2C-C1C-NC	6.16	117.14	109.84
2	B	801	HP5	C3B-CAB-CBB	-5.12	109.99	124.07
2	A	801	HP5	C3D-C4D-ND	4.74	114.94	110.32
2	B	801	HP5	CAA-CBA-CGA	-4.45	104.02	113.60
2	B	801	HP5	C2A-C1A-NA	4.33	114.55	110.36
5	B	804	MPD	O4-C4-C3	-4.30	93.99	111.36
2	B	801	HP5	CMA-C3A-C4A	-3.82	119.22	125.04
2	B	801	HP5	CAD-C3D-C2D	3.74	134.84	127.88
2	B	801	HP5	CAD-C3D-C4D	-3.65	118.02	124.89
2	A	801	HP5	C3B-CAB-CBB	-3.59	114.19	124.07
2	A	801	HP5	O2A-CGA-CBA	-3.23	112.71	123.08
2	A	801	HP5	CAA-CBA-CGA	-3.21	106.70	113.60
5	A	804	MPD	O2-C2-C1	-3.17	97.90	108.08
2	B	801	HP5	CMC-C2C-C3C	3.13	135.97	128.30
2	B	801	HP5	C3D-C4D-ND	-3.07	107.34	110.32
2	B	801	HP5	C4A-C3A-C2A	2.85	109.95	106.96
2	A	801	HP5	CHD-C1D-ND	2.84	127.52	124.44
2	A	801	HP5	O1A-CGA-CBA	2.84	123.15	114.03
5	A	805	MPD	C5-C4-C3	2.77	124.75	111.69
2	A	801	HP5	O2D-CGD-CBD	-2.63	114.62	123.08

Continued on next page...

Continued from previous page...

Mol	Chain	Res	Type	Atoms	Z	Observed(°)	Ideal(°)
5	B	804	MPD	O2-C2-C3	-2.55	100.21	109.80
2	A	801	HP5	C1D-ND-C4D	-2.43	102.97	105.35
2	B	801	HP5	O2A-CGA-CBA	-2.29	115.74	123.08
5	A	804	MPD	O2-C2-CM	2.24	115.27	108.08
2	A	801	HP5	C2C-C1C-NC	2.19	112.43	109.84
5	A	805	MPD	CM-C2-C1	-2.19	106.02	110.57
5	B	804	MPD	CM-C2-C1	2.18	115.12	110.57
5	A	805	MPD	O4-C4-C3	-2.18	102.55	111.36
5	A	805	MPD	C1-C2-C3	2.13	119.89	109.96
2	B	801	HP5	CAD-CBD-CGD	2.02	117.96	113.60

All (2) chirality outliers are listed below:

Mol	Chain	Res	Type	Atom
2	A	801	HP5	ND
2	B	801	HP5	ND

All (14) torsion outliers are listed below:

Mol	Chain	Res	Type	Atoms
5	A	805	MPD	C1-C2-C3-C4
5	A	805	MPD	O2-C2-C3-C4
5	A	805	MPD	C2-C3-C4-C5
5	B	804	MPD	C2-C3-C4-C5
5	A	804	MPD	CM-C2-C3-C4
5	A	805	MPD	CM-C2-C3-C4
2	A	801	HP5	CAA-CBA-CGA-O1A
2	A	801	HP5	CAA-CBA-CGA-O2A
2	B	801	HP5	CAA-CBA-CGA-O2A
2	B	801	HP5	CAA-CBA-CGA-O1A
2	B	801	HP5	CAD-CBD-CGD-O1D
5	A	804	MPD	C2-C3-C4-O4
5	A	805	MPD	C2-C3-C4-O4
2	A	801	HP5	CAD-CBD-CGD-O1D

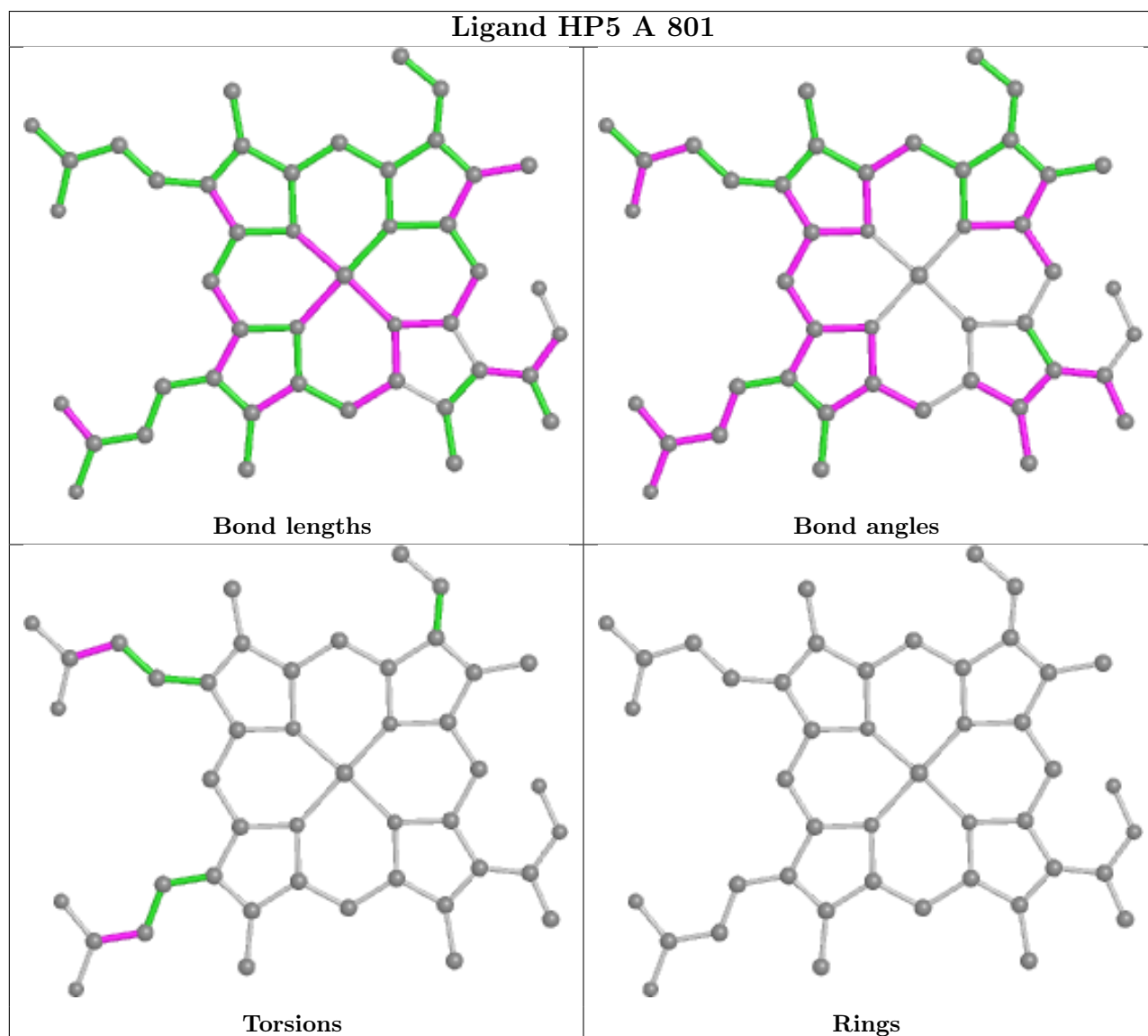
There are no ring outliers.

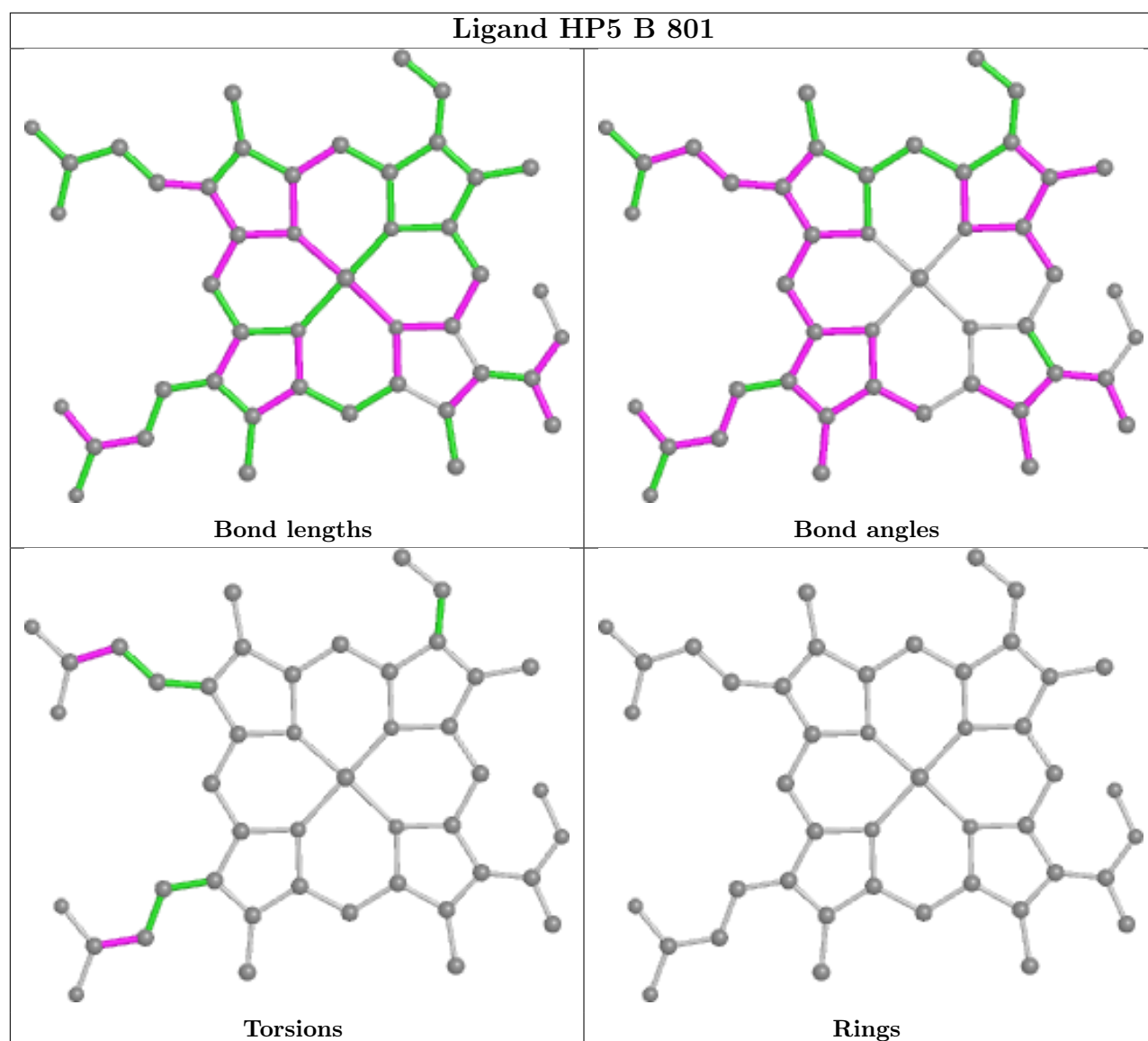
1 monomer is involved in 1 short contact:

Mol	Chain	Res	Type	Clashes	Symm-Clashes
5	A	804	MPD	1	0

The following is a two-dimensional graphical depiction of Mogul quality analysis of bond lengths,

bond angles, torsion angles, and ring geometry for all instances of the Ligand of Interest. In addition, ligands with molecular weight > 250 and outliers as shown on the validation Tables will also be included. For torsion angles, if less than 5% of the Mogul distribution of torsion angles is within 10 degrees of the torsion angle in question, then that torsion angle is considered an outlier. Any bond that is central to one or more torsion angles identified as an outlier by Mogul will be highlighted in the graph. For rings, the root-mean-square deviation (RMSD) between the ring in question and similar rings identified by Mogul is calculated over all ring torsion angles. If the average RMSD is greater than 60 degrees and the minimal RMSD between the ring in question and any Mogul-identified rings is also greater than 60 degrees, then that ring is considered an outlier. The outliers are highlighted in purple. The color gray indicates Mogul did not find sufficient equivalents in the CSD to analyse the geometry.





5.7 Other polymers [i](#)

There are no such residues in this entry.

5.8 Polymer linkage issues [i](#)

There are no chain breaks in this entry.

6 Fit of model and data

6.1 Protein, DNA and RNA chains

In the following table, the column labelled ‘#RSRZ > 2’ contains the number (and percentage) of RSRZ outliers, followed by percent RSRZ outliers for the chain as percentile scores relative to all X-ray entries and entries of similar resolution. The OWAB column contains the minimum, median, 95th percentile and maximum values of the occupancy-weighted average B-factor per residue. The column labelled ‘Q < 0.9’ lists the number of (and percentage) of residues with an average occupancy less than 0.9.

Mol	Chain	Analysed	<RSRZ>	#RSRZ>2	OWAB(Å ²)	Q<0.9
1	A	713/728 (97%)	-0.38	15 (2%) 63 67	11, 18, 36, 78	0
1	B	713/728 (97%)	-0.43	12 (1%) 70 74	11, 18, 35, 77	0
All	All	1426/1456 (97%)	-0.41	27 (1%) 66 70	11, 18, 36, 78	0

All (27) RSRZ outliers are listed below:

Mol	Chain	Res	Type	RSRZ
1	A	748	ALA	8.8
1	A	540	ARG	6.6
1	B	748	ALA	5.7
1	B	610	ARG	5.6
1	B	679	ALA	5.5
1	B	680	ALA	5.2
1	A	610	ARG	5.2
1	B	65	ASP	4.8
1	B	540	ARG	4.6
1	A	64	LYS	4.6
1	A	679	ALA	4.1
1	A	541	GLY	4.0
1	A	608	LYS	3.8
1	B	608	LYS	3.8
1	B	64	LYS	3.7
1	A	65	ASP	3.6
1	A	454	ASP	3.5
1	B	541	GLY	3.2
1	A	680	ALA	3.1
1	A	378	SER	2.9
1	A	222	ASP	2.7
1	A	63	GLY	2.6
1	A	221	GLY	2.6
1	B	44	PRO	2.6

Continued on next page...

Continued from previous page...

Mol	Chain	Res	Type	RSRZ
1	A	609	TYR	2.5
1	B	609	TYR	2.4
1	B	454	ASP	2.2

6.2 Non-standard residues in protein, DNA, RNA chains [i](#)

There are no non-standard protein/DNA/RNA residues in this entry.

6.3 Carbohydrates [i](#)

There are no monosaccharides in this entry.

6.4 Ligands [i](#)

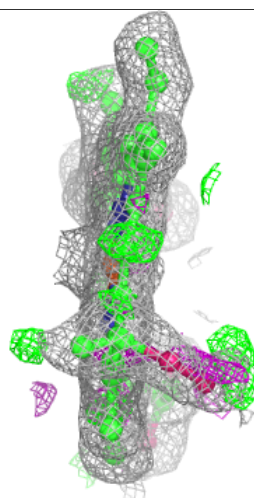
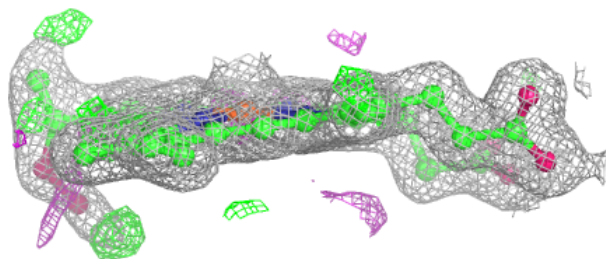
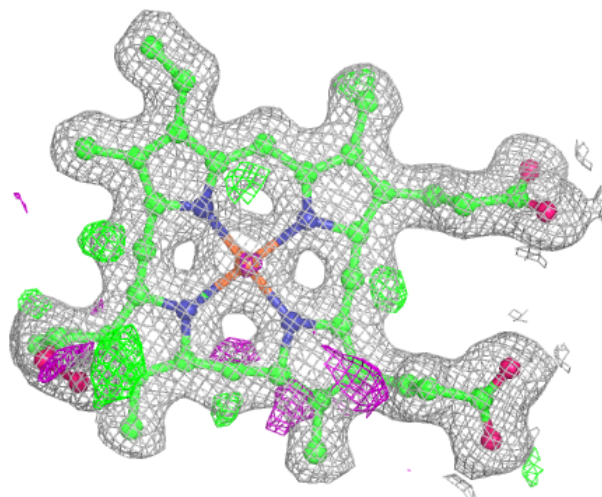
In the following table, the Atoms column lists the number of modelled atoms in the group and the number defined in the chemical component dictionary. The B-factors column lists the minimum, median, 95th percentile and maximum values of B factors of atoms in the group. The column labelled 'Q< 0.9' lists the number of atoms with occupancy less than 0.9.

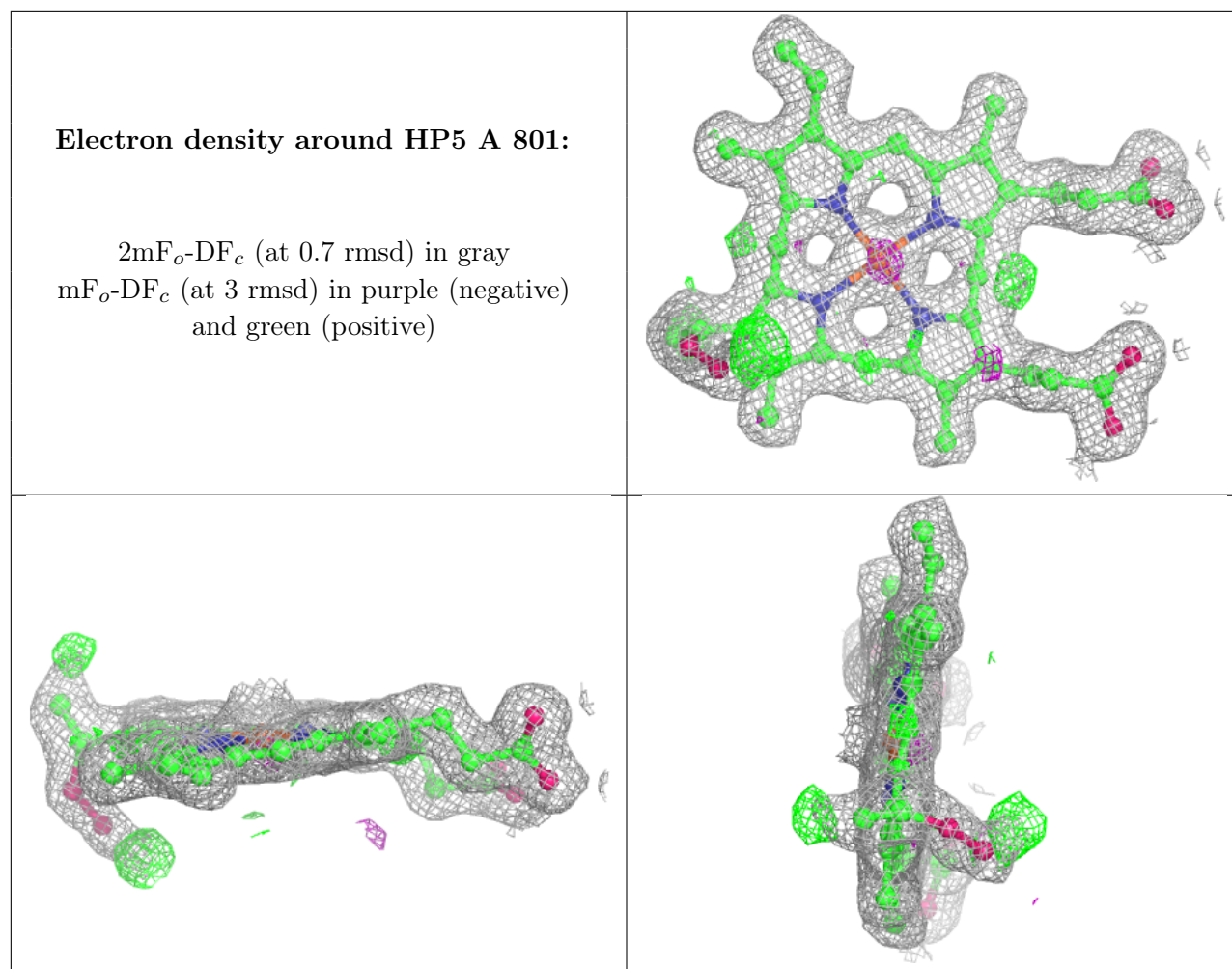
Mol	Type	Chain	Res	Atoms	RSCC	RSR	B-factors(Å ²)	Q<0.9
5	MPD	A	804	8/8	0.89	0.12	47,55,70,74	0
4	OXY	A	803	2/2	0.91	0.24	33,33,33,41	0
4	OXY	B	803	2/2	0.92	0.25	31,31,31,32	0
5	MPD	A	805	8/8	0.93	0.10	35,40,51,54	0
5	MPD	B	804	8/8	0.93	0.09	50,56,60,65	0
2	HP5	B	801	45/45	0.98	0.07	12,13,20,27	2
2	HP5	A	801	45/45	0.98	0.06	12,15,22,33	2
3	NA	A	802	1/1	0.99	0.05	15,15,15,15	0
3	NA	B	802	1/1	1.00	0.04	16,16,16,16	0

The following is a graphical depiction of the model fit to experimental electron density of all instances of the Ligand of Interest. In addition, ligands with molecular weight > 250 and outliers as shown on the geometry validation Tables will also be included. Each fit is shown from different orientation to approximate a three-dimensional view.

Electron density around HP5 B 801:

$2mF_o-DF_c$ (at 0.7 rmsd) in gray
 mF_o-DF_c (at 3 rmsd) in purple (negative)
and green (positive)





6.5 Other polymers [i](#)

There are no such residues in this entry.