



wwPDB X-ray Structure Validation Summary Report ⓘ

Nov 2, 2024 – 11:46 AM EDT

PDB ID : 5L0E
Title : Crystal Structure of Autotaxin and Compound 1
Authors : Durbin, J.D.
Deposited on : 2016-07-27
Resolution : 3.06 Å(reported)

This is a wwPDB X-ray Structure Validation Summary Report for a publicly released PDB entry.

We welcome your comments at validation@mail.wwpdb.org

A user guide is available at

<https://www.wwpdb.org/validation/2017/XrayValidationReportHelp>

with specific help available everywhere you see the ⓘ symbol.

The types of validation reports are described at

<http://www.wwpdb.org/validation/2017/FAQs#types>.

The following versions of software and data (see [references ⓘ](#)) were used in the production of this report:

MolProbity : 4.02b-467
Mogul : 2022.3.0, CSD as543be (2022)
Xtrriage (Phenix) : 1.20.1
EDS : 3.0
buster-report : 1.1.7 (2018)
Percentile statistics : 20231227.v01 (using entries in the PDB archive December 27th 2023)
CCP4 : 9.0.003 (Gargrove)
Density-Fitness : 1.0.11
Ideal geometry (proteins) : Engh & Huber (2001)
Ideal geometry (DNA, RNA) : Parkinson et al. (1996)
Validation Pipeline (wwPDB-VP) : 2.39

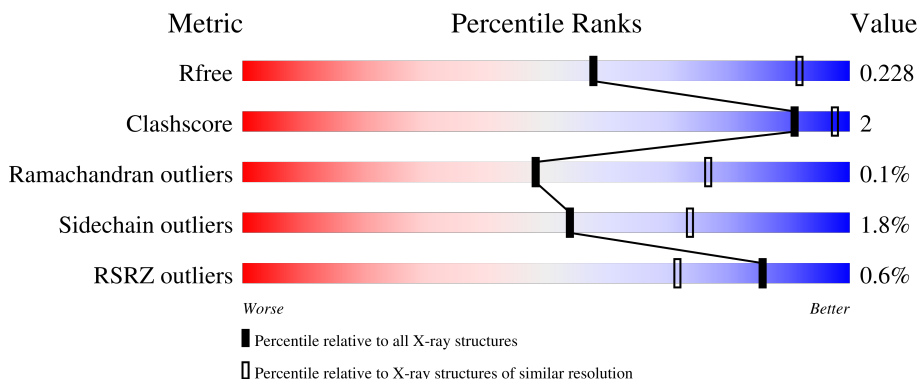
1 Overall quality at a glance

The following experimental techniques were used to determine the structure:

X-RAY DIFFRACTION

The reported resolution of this entry is 3.06 Å.

Percentile scores (ranging between 0-100) for global validation metrics of the entry are shown in the following graphic. The table shows the number of entries on which the scores are based.



Metric	Whole archive (#Entries)	Similar resolution (#Entries, resolution range(Å))
R_{free}	164625	2258 (3.10-3.02)
Clashscore	180529	2399 (3.10-3.02)
Ramachandran outliers	177936	2269 (3.10-3.02)
Sidechain outliers	177891	2268 (3.10-3.02)
RSRZ outliers	164620	2258 (3.10-3.02)

The table below summarises the geometric issues observed across the polymeric chains and their fit to the electron density. The red, orange, yellow and green segments of the lower bar indicate the fraction of residues that contain outliers for ≥ 3 , 2, 1 and 0 types of geometric quality criteria respectively. A grey segment represents the fraction of residues that are not modelled. The numeric value for each fraction is indicated below the corresponding segment, with a dot representing fractions $\leq 5\%$. The upper red bar (where present) indicates the fraction of residues that have poor fit to the electron density. The numeric value is given above the bar.

Mol	Chain	Length	Quality of chain
1	A	871	 85% 5% 10%
1	B	871	 84% 6% 10%
2	C	9	 33% 67%
3	D	6	 33% 67%

2 Entry composition

There are 8 unique types of molecules in this entry. The entry contains 12992 atoms, of which 0 are hydrogens and 0 are deuteriums.

In the tables below, the ZeroOcc column contains the number of atoms modelled with zero occupancy, the AltConf column contains the number of residues with at least one atom in alternate conformation and the Trace column contains the number of residues modelled with at most 2 atoms.

- Molecule 1 is a protein called Ectonucleotide pyrophosphatase/phosphodiesterase family member 2.

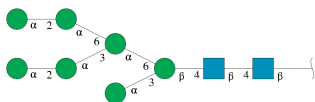
Mol	Chain	Residues	Atoms					ZeroOcc	AltConf	Trace
			Total	C	N	O	S			
1	A	783	6319	4001	1088	1181	49	0	0	0
1	B	782	6310	3995	1086	1180	49	0	0	0

There are 22 discrepancies between the modelled and reference sequences:

Chain	Residue	Modelled	Actual	Comment	Reference
A	591	THR	ARG	engineered mutation	UNP Q64610
A	592	GLU	LYS	engineered mutation	UNP Q64610
A	863	ALA	-	expression tag	UNP Q64610
A	864	ALA	-	expression tag	UNP Q64610
A	865	ALA	-	expression tag	UNP Q64610
A	866	HIS	-	expression tag	UNP Q64610
A	867	HIS	-	expression tag	UNP Q64610
A	868	HIS	-	expression tag	UNP Q64610
A	869	HIS	-	expression tag	UNP Q64610
A	870	HIS	-	expression tag	UNP Q64610
A	871	HIS	-	expression tag	UNP Q64610
B	591	THR	ARG	engineered mutation	UNP Q64610
B	592	GLU	LYS	engineered mutation	UNP Q64610
B	863	ALA	-	expression tag	UNP Q64610
B	864	ALA	-	expression tag	UNP Q64610
B	865	ALA	-	expression tag	UNP Q64610
B	866	HIS	-	expression tag	UNP Q64610
B	867	HIS	-	expression tag	UNP Q64610
B	868	HIS	-	expression tag	UNP Q64610
B	869	HIS	-	expression tag	UNP Q64610
B	870	HIS	-	expression tag	UNP Q64610
B	871	HIS	-	expression tag	UNP Q64610

- Molecule 2 is an oligosaccharide called alpha-D-mannopyranose-(1-2)-alpha-D-mannopyran

ose-(1-3)-[alpha-D-mannopyranose-(1-2)-alpha-D-mannopyranose-(1-6)]alpha-D-mannopyranose-(1-6)-[alpha-D-mannopyranose-(1-3)]beta-D-mannopyranose-(1-4)-2-acetamido-2-deoxy-beta-D-glucopyranose-(1-4)-2-acetamido-2-deoxy-beta-D-glucopyranose.



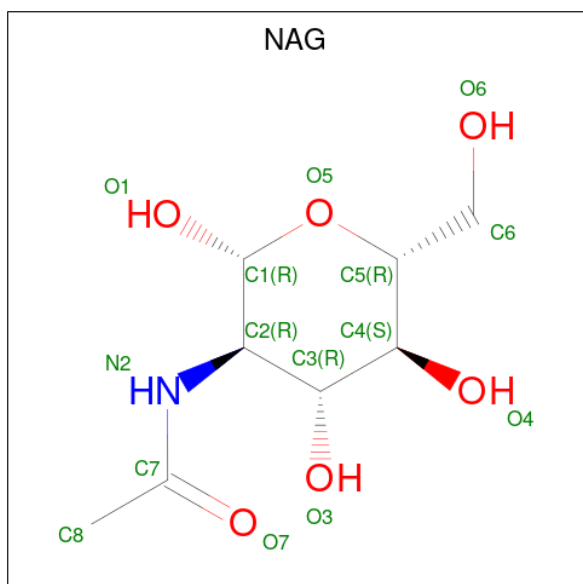
Mol	Chain	Residues	Atoms				ZeroOcc	AltConf	Trace
			Total	C	N	O			
2	C	9	105	58	2	45	0	0	0

- Molecule 3 is an oligosaccharide called alpha-D-mannopyranose-(1-2)-alpha-D-mannopyranose-(1-3)-alpha-D-mannopyranose-(1-6)-beta-D-mannopyranose-(1-4)-2-acetamido-2-deoxy-beta-D-glucopyranose-(1-4)-2-acetamido-2-deoxy-beta-D-glucopyranose.



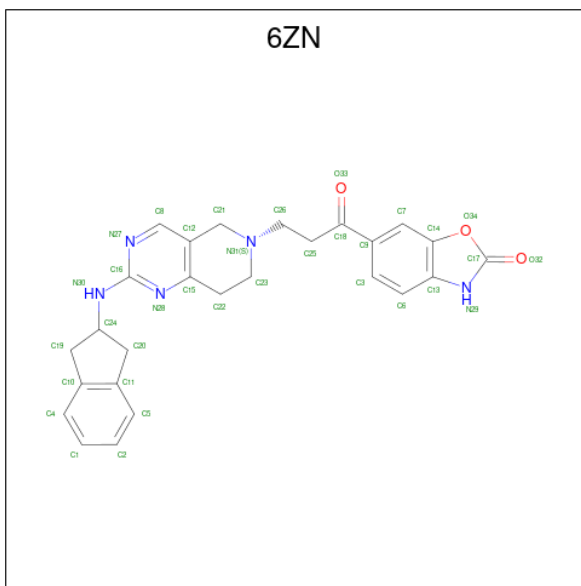
Mol	Chain	Residues	Atoms				ZeroOcc	AltConf	Trace
			Total	C	N	O			
3	D	6	72	40	2	30	0	0	0

- Molecule 4 is 2-acetamido-2-deoxy-beta-D-glucopyranose (three-letter code: NAG) (formula: $C_8H_{15}NO_6$).



Mol	Chain	Residues	Atoms				ZeroOcc	AltConf
			Total	C	N	O		
4	A	1	14	8	1	5	0	0
4	B	1	14	8	1	5	0	0

- Molecule 5 is 6-(3-{2-[(2,3-dihydro-1H-inden-2-yl)amino]-7,8-dihydropyrido[4,3-d]pyrimidin-6(5H)-yl}propanoyl)-1,3-benzoxazol-2(3H)-one (three-letter code: 6ZN) (formula: C₂₆H₂₅N₅O₃).



Mol	Chain	Residues	Atoms				ZeroOcc	AltConf
			Total	C	N	O		
5	A	1	34	26	5	3	0	0
5	B	1	34	26	5	3	0	0

- Molecule 6 is CHLORIDE ION (three-letter code: CL) (formula: Cl).


Mol	Chain	Residues	Atoms		ZeroOcc	AltConf
			Total	Cl		
6	A	1	1	1	0	0
6	B	1	1	1	0	0

- Molecule 7 is ZINC ION (three-letter code: ZN) (formula: Zn).

Mol	Chain	Residues	Atoms		ZeroOcc	AltConf
7	A	3	Total 3	Zn 3	0	0
7	B	3	Total 3	Zn 3	0	0

- Molecule 8 is water.

Mol	Chain	Residues	Atoms		ZeroOcc	AltConf
8	A	40	Total 40	O 40	0	0
8	B	42	Total 42	O 42	0	0

Chain C:  33% 67%

MAN1	MAN2	MAN3	MAN4	MAN5	MAN6	MAN7	MAN8	MAN9
------	------	------	------	------	------	------	------	------

- Molecule 3: alpha-D-mannopyranose-(1-2)-alpha-D-mannopyranose-(1-3)-alpha-D-mannopyranose-(1-6)-beta-D-mannopyranose-(1-4)-2-acetamido-2-deoxy-beta-D-glucopyranose-(1-4)-2-acetamido-2-deoxy-beta-D-glucopyranose

Chain D:  33% 67%

MAN1	MAN2	MAN3	MAN4	MAN5	MAN6
------	------	------	------	------	------

4 Data and refinement statistics

Property	Value	Source
Space group	C 1 2 1	Depositor
Cell constants a, b, c, α , β , γ	184.18Å 96.84Å 136.92Å 90.00° 112.82° 90.00°	Depositor
Resolution (Å)	19.98 – 3.06 19.98 – 3.06	Depositor EDS
% Data completeness (in resolution range)	95.0 (19.98-3.06) 94.6 (19.98-3.06)	Depositor EDS
R_{merge}	(Not available)	Depositor
R_{sym}	0.13	Depositor
$\langle I/\sigma(I) \rangle$ ¹	2.42 (at 3.04Å)	Xtrriage
Refinement program	BUSTER 2.11.5	Depositor
R, R_{free}	0.183 , 0.211 0.201 , 0.228	Depositor DCC
R_{free} test set	982 reflections (2.47%)	wwPDB-VP
Wilson B-factor (Å ²)	48.7	Xtrriage
Anisotropy	0.626	Xtrriage
Bulk solvent k_{sol} (e/Å ³), B_{sol} (Å ²)	0.34 , 64.5	EDS
L-test for twinning ²	$\langle L \rangle = 0.43$, $\langle L^2 \rangle = 0.26$	Xtrriage
Estimated twinning fraction	No twinning to report.	Xtrriage
F_o, F_c correlation	0.90	EDS
Total number of atoms	12992	wwPDB-VP
Average B, all atoms (Å ²)	50.0	wwPDB-VP

Xtrriage's analysis on translational NCS is as follows: *The largest off-origin peak in the Patterson function is 4.74% of the height of the origin peak. No significant pseudotranslation is detected.*

¹Intensities estimated from amplitudes.

²Theoretical values of $\langle |L| \rangle$, $\langle L^2 \rangle$ for acentric reflections are 0.5, 0.333 respectively for untwinned datasets, and 0.375, 0.2 for perfectly twinned datasets.

5 Model quality

5.1 Standard geometry

Bond lengths and bond angles in the following residue types are not validated in this section: NAG, CL, 6ZN, ZN, BMA, MAN

The Z score for a bond length (or angle) is the number of standard deviations the observed value is removed from the expected value. A bond length (or angle) with $|Z| > 5$ is considered an outlier worth inspection. RMSZ is the root-mean-square of all Z scores of the bond lengths (or angles).

Mol	Chain	Bond lengths		Bond angles	
		RMSZ	# Z >5	RMSZ	# Z >5
1	A	0.50	0/6497	0.68	0/8814
1	B	0.51	0/6488	0.69	0/8803
All	All	0.51	0/12985	0.68	0/17617

There are no bond length outliers.

There are no bond angle outliers.

There are no chirality outliers.

There are no planarity outliers.

5.2 Too-close contacts

In the following table, the Non-H and H(model) columns list the number of non-hydrogen atoms and hydrogen atoms in the chain respectively. The H(added) column lists the number of hydrogen atoms added and optimized by MolProbity. The Clashes column lists the number of clashes within the asymmetric unit, whereas Symm-Clashes lists symmetry-related clashes.

Mol	Chain	Non-H	H(model)	H(added)	Clashes	Symm-Clashes
1	A	6319	0	6049	20	0
1	B	6310	0	6036	21	0
2	C	105	0	88	0	0
3	D	72	0	61	0	0
4	A	14	0	13	0	0
4	B	14	0	13	0	0
5	A	34	0	0	1	0
5	B	34	0	0	0	0
6	A	1	0	0	0	0
6	B	1	0	0	0	0
7	A	3	0	0	0	0

Continued on next page...

Continued from previous page...

Mol	Chain	Non-H	H(model)	H(added)	Clashes	Symm-Clashes
7	B	3	0	0	0	0
8	A	40	0	0	0	0
8	B	42	0	0	1	0
All	All	12992	0	12260	40	0

The all-atom clashscore is defined as the number of clashes found per 1000 atoms (including hydrogen atoms). The all-atom clashscore for this structure is 2.

The worst 5 of 40 close contacts within the same asymmetric unit are listed below, sorted by their clash magnitude.

Atom-1	Atom-2	Interatomic distance (Å)	Clash overlap (Å)
1:A:163:PRO:HB3	1:A:350:CYS:O	1.87	0.75
1:B:77:ASN:OD1	1:B:272:THR:HG21	1.99	0.62
1:A:243:LEU:HD22	5:A:911:6ZN:C7	2.31	0.61
1:A:171:ASP:O	1:A:310:PRO:HD2	2.03	0.58
1:B:171:ASP:O	1:B:310:PRO:HD2	2.05	0.56

There are no symmetry-related clashes.

5.3 Torsion angles [i](#)

5.3.1 Protein backbone [i](#)

In the following table, the Percentiles column shows the percent Ramachandran outliers of the chain as a percentile score with respect to all X-ray entries followed by that with respect to entries of similar resolution.

The Analysed column shows the number of residues for which the backbone conformation was analysed, and the total number of residues.

Mol	Chain	Analysed	Favoured	Allowed	Outliers	Percentiles
1	A	777/871 (89%)	745 (96%)	31 (4%)	1 (0%)	48 77
1	B	776/871 (89%)	743 (96%)	33 (4%)	0	100 100
All	All	1553/1742 (89%)	1488 (96%)	64 (4%)	1 (0%)	48 77

All (1) Ramachandran outliers are listed below:

Mol	Chain	Res	Type
1	A	590	SER

5.3.2 Protein sidechains [i](#)

In the following table, the Percentiles column shows the percent sidechain outliers of the chain as a percentile score with respect to all X-ray entries followed by that with respect to entries of similar resolution.

The Analysed column shows the number of residues for which the sidechain conformation was analysed, and the total number of residues.

Mol	Chain	Analysed	Rotameric	Outliers	Percentiles	
1	A	710/786 (90%)	699 (98%)	11 (2%)	60	77
1	B	709/786 (90%)	695 (98%)	14 (2%)	50	71
All	All	1419/1572 (90%)	1394 (98%)	25 (2%)	54	74

5 of 25 residues with a non-rotameric sidechain are listed below:

Mol	Chain	Res	Type
1	B	183	LYS
1	B	363	ASP
1	B	750	ASP
1	B	246	ARG
1	B	370	GLU

Sometimes sidechains can be flipped to improve hydrogen bonding and reduce clashes. All (1) such sidechains are listed below:

Mol	Chain	Res	Type
1	A	118	HIS

5.3.3 RNA [i](#)

There are no RNA molecules in this entry.

5.4 Non-standard residues in protein, DNA, RNA chains [i](#)

There are no non-standard protein/DNA/RNA residues in this entry.

5.5 Carbohydrates [i](#)

15 monosaccharides are modelled in this entry.

In the following table, the Counts columns list the number of bonds (or angles) for which Mogul statistics could be retrieved, the number of bonds (or angles) that are observed in the model and

the number of bonds (or angles) that are defined in the Chemical Component Dictionary. The Link column lists molecule types, if any, to which the group is linked. The Z score for a bond length (or angle) is the number of standard deviations the observed value is removed from the expected value. A bond length (or angle) with $|Z| > 2$ is considered an outlier worth inspection. RMSZ is the root-mean-square of all Z scores of the bond lengths (or angles).

Mol	Type	Chain	Res	Link	Bond lengths			Bond angles		
					Counts	RMSZ	# Z > 2	Counts	RMSZ	# Z > 2
2	NAG	C	1	1,2	14,14,15	0.37	0	17,19,21	0.95	1 (5%)
2	NAG	C	2	2	14,14,15	0.31	0	17,19,21	0.81	0
2	BMA	C	3	2	11,11,12	0.71	0	15,15,17	1.14	1 (6%)
2	MAN	C	4	2	11,11,12	0.47	0	15,15,17	0.91	1 (6%)
2	MAN	C	5	2	11,11,12	0.45	0	15,15,17	0.90	1 (6%)
2	MAN	C	6	2	11,11,12	0.41	0	15,15,17	0.78	1 (6%)
2	MAN	C	7	2	11,11,12	0.37	0	15,15,17	0.89	1 (6%)
2	MAN	C	8	2	11,11,12	0.34	0	15,15,17	0.61	0
2	MAN	C	9	2	11,11,12	0.37	0	15,15,17	0.60	0
3	NAG	D	1	3,1	14,14,15	0.39	0	17,19,21	1.00	1 (5%)
3	NAG	D	2	3	14,14,15	0.28	0	17,19,21	0.79	0
3	BMA	D	3	3	11,11,12	0.75	0	15,15,17	1.06	0
3	MAN	D	4	3	11,11,12	0.44	0	15,15,17	0.95	1 (6%)
3	MAN	D	5	3	11,11,12	0.44	0	15,15,17	0.87	1 (6%)
3	MAN	D	6	3	11,11,12	0.39	0	15,15,17	0.83	1 (6%)

In the following table, the Chirals column lists the number of chiral outliers, the number of chiral centers analysed, the number of these observed in the model and the number defined in the Chemical Component Dictionary. Similar counts are reported in the Torsion and Rings columns. '-' means no outliers of that kind were identified.

Mol	Type	Chain	Res	Link	Chirals	Torsions	Rings
2	NAG	C	1	1,2	-	0/6/23/26	0/1/1/1
2	NAG	C	2	2	-	0/6/23/26	0/1/1/1
2	BMA	C	3	2	-	0/2/19/22	0/1/1/1
2	MAN	C	4	2	-	0/2/19/22	0/1/1/1
2	MAN	C	5	2	-	0/2/19/22	0/1/1/1
2	MAN	C	6	2	-	0/2/19/22	0/1/1/1
2	MAN	C	7	2	-	0/2/19/22	0/1/1/1
2	MAN	C	8	2	-	0/2/19/22	0/1/1/1
2	MAN	C	9	2	-	2/2/19/22	0/1/1/1
3	NAG	D	1	3,1	-	0/6/23/26	0/1/1/1
3	NAG	D	2	3	-	0/6/23/26	0/1/1/1
3	BMA	D	3	3	-	0/2/19/22	0/1/1/1

Continued on next page...

Continued from previous page...

Mol	Type	Chain	Res	Link	Chirals	Torsions	Rings
3	MAN	D	4	3	-	0/2/19/22	0/1/1/1
3	MAN	D	5	3	-	0/2/19/22	0/1/1/1
3	MAN	D	6	3	-	0/2/19/22	0/1/1/1

There are no bond length outliers.

The worst 5 of 10 bond angle outliers are listed below:

Mol	Chain	Res	Type	Atoms	Z	Observed(°)	Ideal(°)
3	D	1	NAG	O5-C1-C2	-3.02	106.62	111.29
2	C	7	MAN	C1-O5-C5	3.02	116.23	112.19
3	D	4	MAN	C1-O5-C5	2.91	116.09	112.19
2	C	5	MAN	C1-O5-C5	2.86	116.02	112.19
3	D	5	MAN	C1-O5-C5	2.84	115.99	112.19

There are no chirality outliers.

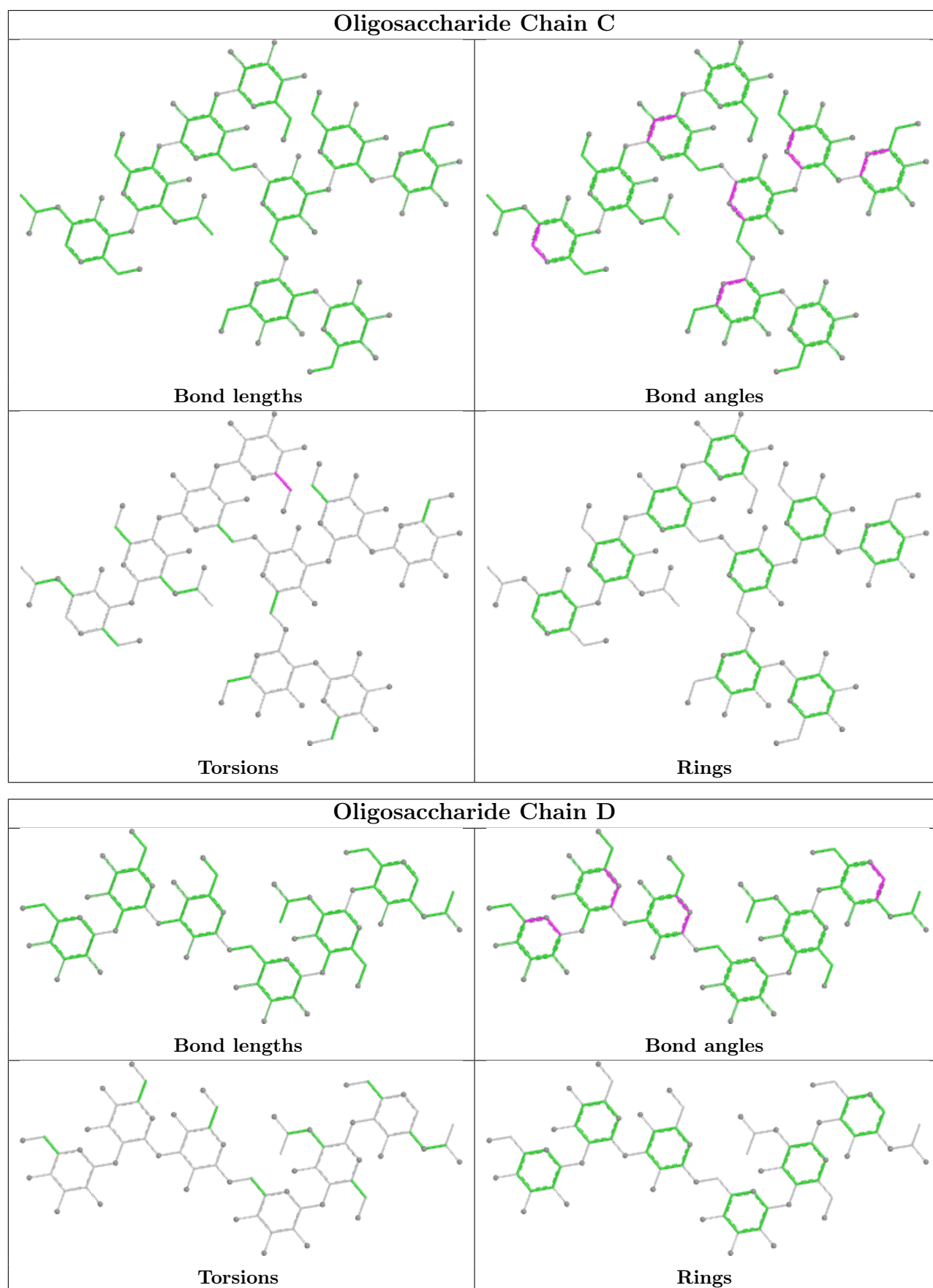
All (2) torsion outliers are listed below:

Mol	Chain	Res	Type	Atoms
2	C	9	MAN	C4-C5-C6-O6
2	C	9	MAN	O5-C5-C6-O6

There are no ring outliers.

No monomer is involved in short contacts.

The following is a two-dimensional graphical depiction of Mogul quality analysis of bond lengths, bond angles, torsion angles, and ring geometry for oligosaccharide.



5.6 Ligand geometry

Of 12 ligands modelled in this entry, 8 are monoatomic - leaving 4 for Mogul analysis.

In the following table, the Counts columns list the number of bonds (or angles) for which Mogul statistics could be retrieved, the number of bonds (or angles) that are observed in the model and the number of bonds (or angles) that are defined in the Chemical Component Dictionary. The Link column lists molecule types, if any, to which the group is linked. The Z score for a bond length (or angle) is the number of standard deviations the observed value is removed from the expected value. A bond length (or angle) with $|Z| > 2$ is considered an outlier worth inspection. RMSZ is the root-mean-square of all Z scores of the bond lengths (or angles).

Mol	Type	Chain	Res	Link	Bond lengths			Bond angles		
					Counts	RMSZ	# Z > 2	Counts	RMSZ	# Z > 2
5	6ZN	A	911	7	39,39,39	1.44	3 (7%)	53,56,56	2.94	20 (37%)
5	6ZN	B	908	7	39,39,39	1.35	2 (5%)	53,56,56	2.88	16 (30%)
4	NAG	B	907	1	14,14,15	0.31	0	17,19,21	0.55	0
4	NAG	A	910	1	14,14,15	0.34	0	17,19,21	0.59	0

In the following table, the Chirals column lists the number of chiral outliers, the number of chiral centers analysed, the number of these observed in the model and the number defined in the Chemical Component Dictionary. Similar counts are reported in the Torsion and Rings columns. '-' means no outliers of that kind were identified.

Mol	Type	Chain	Res	Link	Chirals	Torsions	Rings
5	6ZN	A	911	7	-	5/13/30/30	0/6/6/6
5	6ZN	B	908	7	-	2/13/30/30	0/6/6/6
4	NAG	B	907	1	-	0/6/23/26	0/1/1/1
4	NAG	A	910	1	-	0/6/23/26	0/1/1/1

All (5) bond length outliers are listed below:

Mol	Chain	Res	Type	Atoms	Z	Observed(Å)	Ideal(Å)
5	A	911	6ZN	C16-N30	6.70	1.42	1.34
5	B	908	6ZN	C16-N30	5.99	1.41	1.34
5	B	908	6ZN	C17-N29	3.07	1.38	1.35
5	A	911	6ZN	C17-N29	2.38	1.37	1.35
5	A	911	6ZN	C20-C11	-2.08	1.47	1.50

The worst 5 of 36 bond angle outliers are listed below:

Mol	Chain	Res	Type	Atoms	Z	Observed(°)	Ideal(°)
5	A	911	6ZN	C14-O34-C17	-10.57	100.66	107.00
5	B	908	6ZN	C14-O34-C17	-10.29	100.82	107.00

Continued on next page...

Continued from previous page...

Mol	Chain	Res	Type	Atoms	Z	Observed(°)	Ideal(°)
5	A	911	6ZN	O34-C14-C13	7.57	113.58	108.80
5	B	908	6ZN	O34-C14-C13	7.49	113.53	108.80
5	A	911	6ZN	O34-C17-N29	6.73	112.19	108.20

There are no chirality outliers.

5 of 7 torsion outliers are listed below:

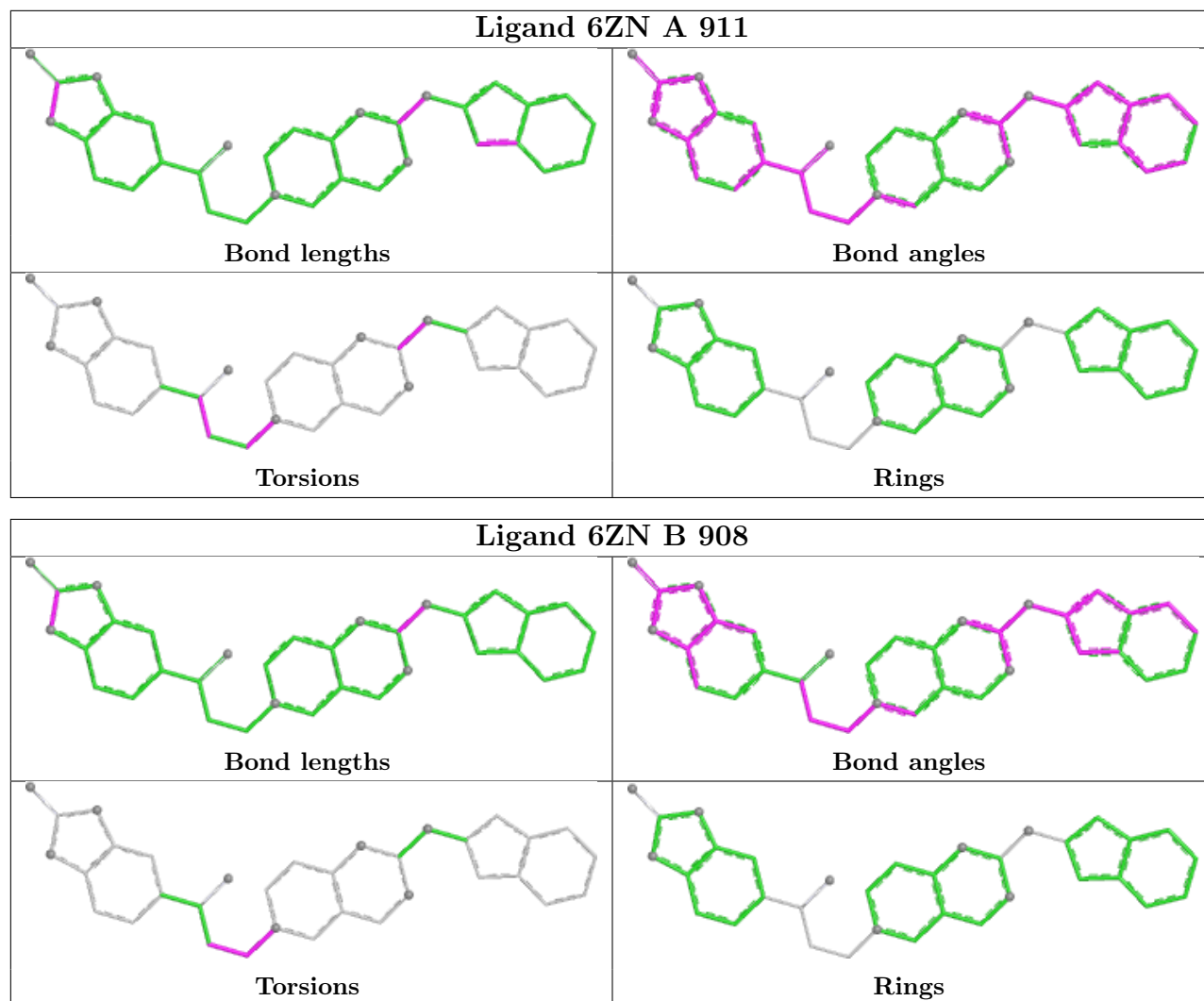
Mol	Chain	Res	Type	Atoms
5	A	911	6ZN	O33-C18-C25-C26
5	A	911	6ZN	C9-C18-C25-C26
5	A	911	6ZN	C25-C26-N31-C21
5	B	908	6ZN	C18-C25-C26-N31
5	A	911	6ZN	C25-C26-N31-C23

There are no ring outliers.

1 monomer is involved in 1 short contact:

Mol	Chain	Res	Type	Clashes	Symm-Clashes
5	A	911	6ZN	1	0

The following is a two-dimensional graphical depiction of Mogul quality analysis of bond lengths, bond angles, torsion angles, and ring geometry for all instances of the Ligand of Interest. In addition, ligands with molecular weight > 250 and outliers as shown on the validation Tables will also be included. For torsion angles, if less than 5% of the Mogul distribution of torsion angles is within 10 degrees of the torsion angle in question, then that torsion angle is considered an outlier. Any bond that is central to one or more torsion angles identified as an outlier by Mogul will be highlighted in the graph. For rings, the root-mean-square deviation (RMSD) between the ring in question and similar rings identified by Mogul is calculated over all ring torsion angles. If the average RMSD is greater than 60 degrees and the minimal RMSD between the ring in question and any Mogul-identified rings is also greater than 60 degrees, then that ring is considered an outlier. The outliers are highlighted in purple. The color gray indicates Mogul did not find sufficient equivalents in the CSD to analyse the geometry.



5.7 Other polymers [i](#)

There are no such residues in this entry.

5.8 Polymer linkage issues [i](#)

There are no chain breaks in this entry.

6 Fit of model and data [i](#)

6.1 Protein, DNA and RNA chains [i](#)

In the following table, the column labelled '#RSRZ > 2' contains the number (and percentage) of RSRZ outliers, followed by percent RSRZ outliers for the chain as percentile scores relative to all X-ray entries and entries of similar resolution. The OWAB column contains the minimum, median, 95th percentile and maximum values of the occupancy-weighted average B-factor per residue. The column labelled 'Q < 0.9' lists the number of (and percentage) of residues with an average occupancy less than 0.9.

Mol	Chain	Analysed	<RSRZ>	#RSRZ>2	OWAB(Å ²)	Q<0.9
1	A	783/871 (89%)	-0.31	6 (0%) 82 66	15, 47, 85, 105	0
1	B	782/871 (89%)	-0.31	4 (0%) 87 74	18, 46, 81, 113	0
All	All	1565/1742 (89%)	-0.31	10 (0%) 85 71	15, 46, 83, 113	0

The worst 5 of 10 RSRZ outliers are listed below:

Mol	Chain	Res	Type	RSRZ
1	A	107	CYS	2.9
1	A	58	CYS	2.7
1	A	119	CYS	2.7
1	A	566	CYS	2.7
1	A	56	GLY	2.5

6.2 Non-standard residues in protein, DNA, RNA chains [i](#)

There are no non-standard protein/DNA/RNA residues in this entry.

6.3 Carbohydrates [i](#)

In the following table, the Atoms column lists the number of modelled atoms in the group and the number defined in the chemical component dictionary. The B-factors column lists the minimum, median, 95th percentile and maximum values of B factors of atoms in the group. The column labelled 'Q < 0.9' lists the number of atoms with occupancy less than 0.9.

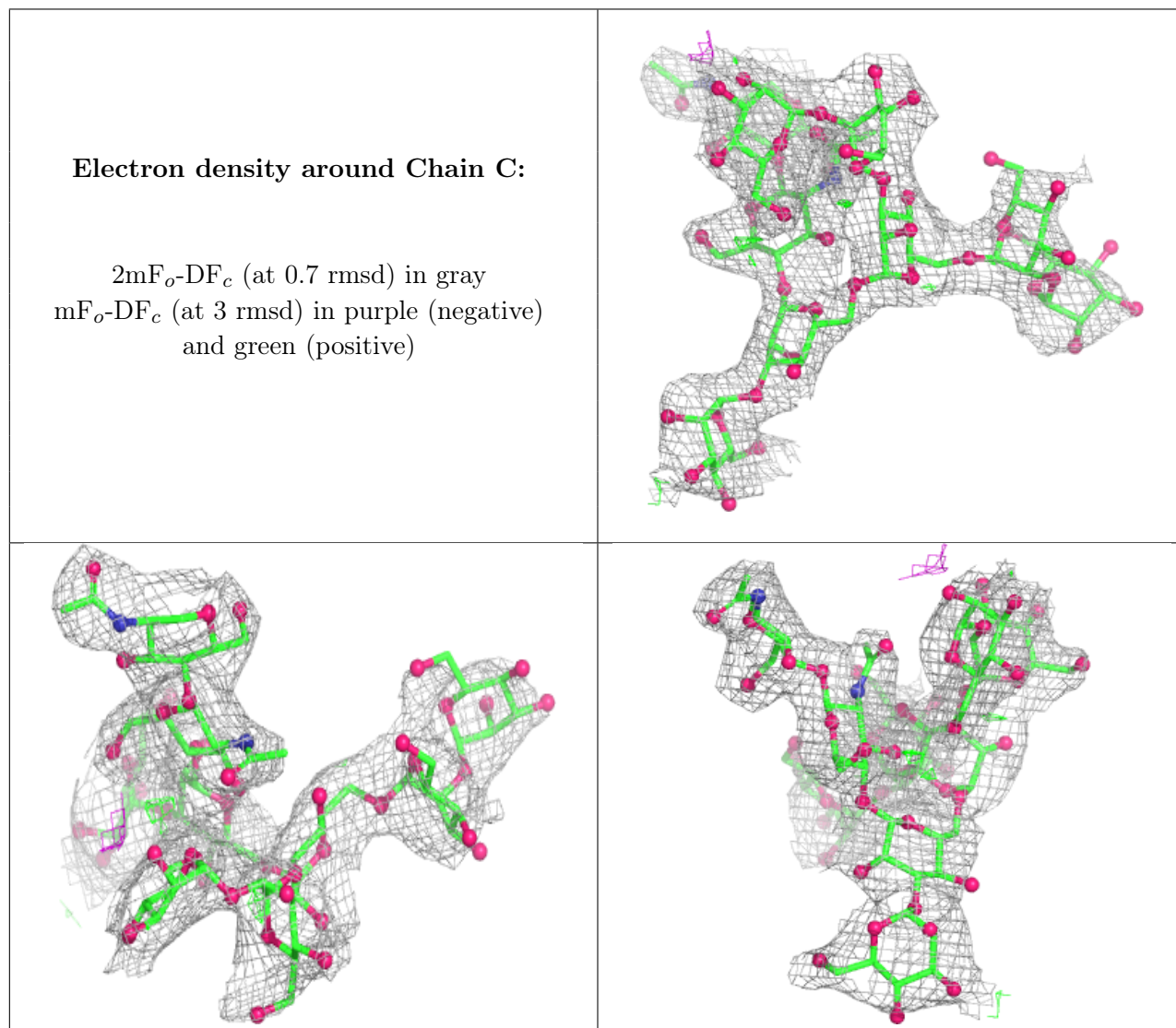
Mol	Type	Chain	Res	Atoms	RSCC	RSR	B-factors(Å ²)	Q<0.9
3	BMA	D	3	11/12	0.64	0.12	86,89,90,91	0
2	MAN	C	9	11/12	0.65	0.10	82,83,84,85	0
2	MAN	C	6	11/12	0.82	0.12	61,65,67,67	0
2	MAN	C	7	11/12	0.83	0.15	88,95,98,98	0
3	MAN	D	4	11/12	0.83	0.10	81,86,89,93	0

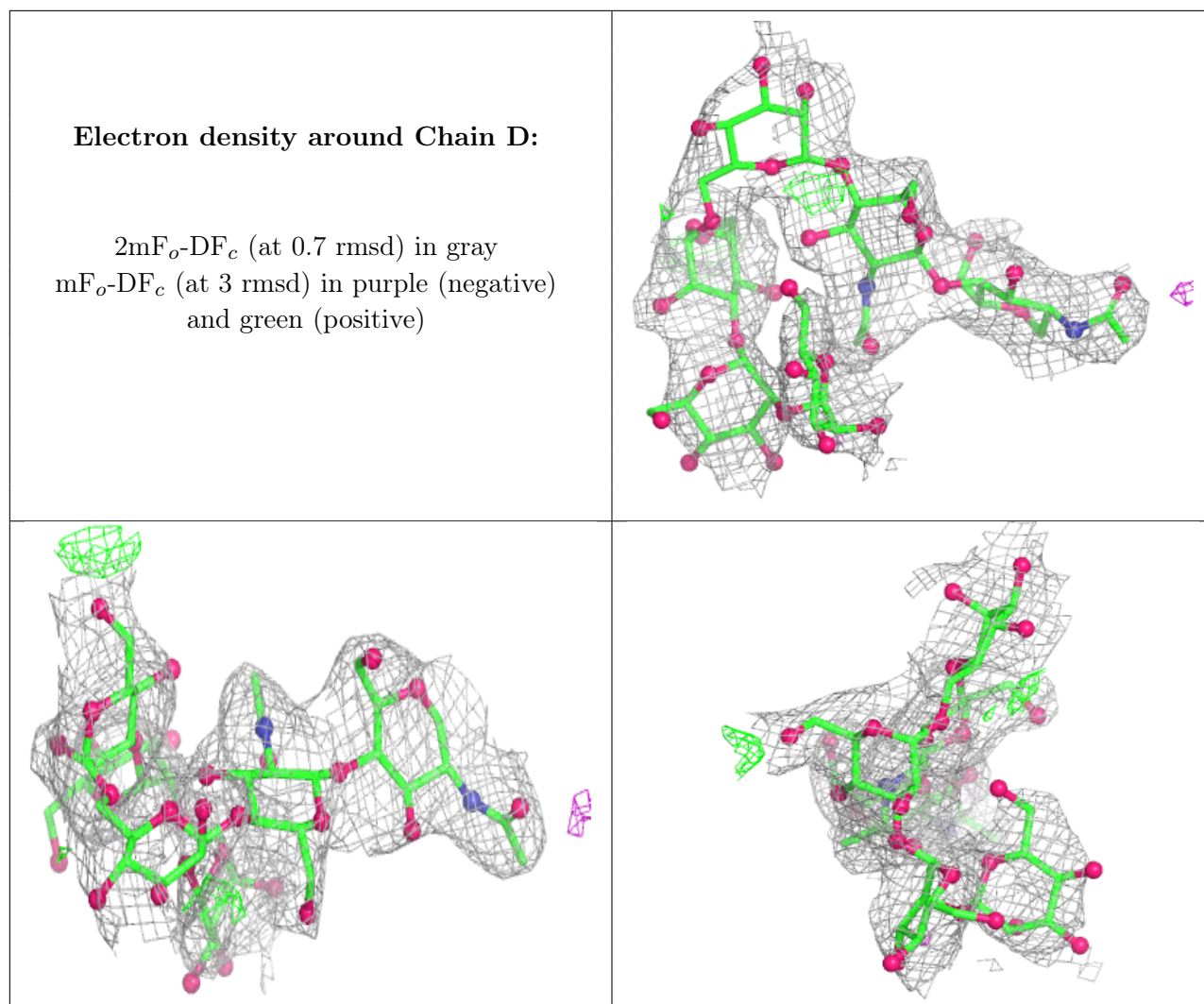
Continued on next page...

Continued from previous page...

Mol	Type	Chain	Res	Atoms	RSCC	RSR	B-factors(\AA^2)	Q<0.9
2	BMA	C	3	11/12	0.84	0.10	75,77,78,80	0
2	MAN	C	4	11/12	0.84	0.10	68,71,76,81	0
2	MAN	C	8	11/12	0.84	0.14	95,97,100,101	0
3	NAG	D	2	14/15	0.88	0.11	55,64,73,81	0
3	MAN	D	6	11/12	0.88	0.12	88,91,92,94	0
2	MAN	C	5	11/12	0.91	0.12	68,73,75,76	0
2	NAG	C	2	14/15	0.93	0.09	60,64,70,74	0
3	MAN	D	5	11/12	0.94	0.12	96,99,100,101	0
3	NAG	D	1	14/15	0.95	0.08	32,37,44,53	0
2	NAG	C	1	14/15	0.95	0.08	39,46,53,54	0

The following is a graphical depiction of the model fit to experimental electron density for oligosaccharide. Each fit is shown from different orientation to approximate a three-dimensional view.





6.4 Ligands [i](#)

In the following table, the Atoms column lists the number of modelled atoms in the group and the number defined in the chemical component dictionary. The B-factors column lists the minimum, median, 95th percentile and maximum values of B factors of atoms in the group. The column labelled 'Q< 0.9' lists the number of atoms with occupancy less than 0.9.

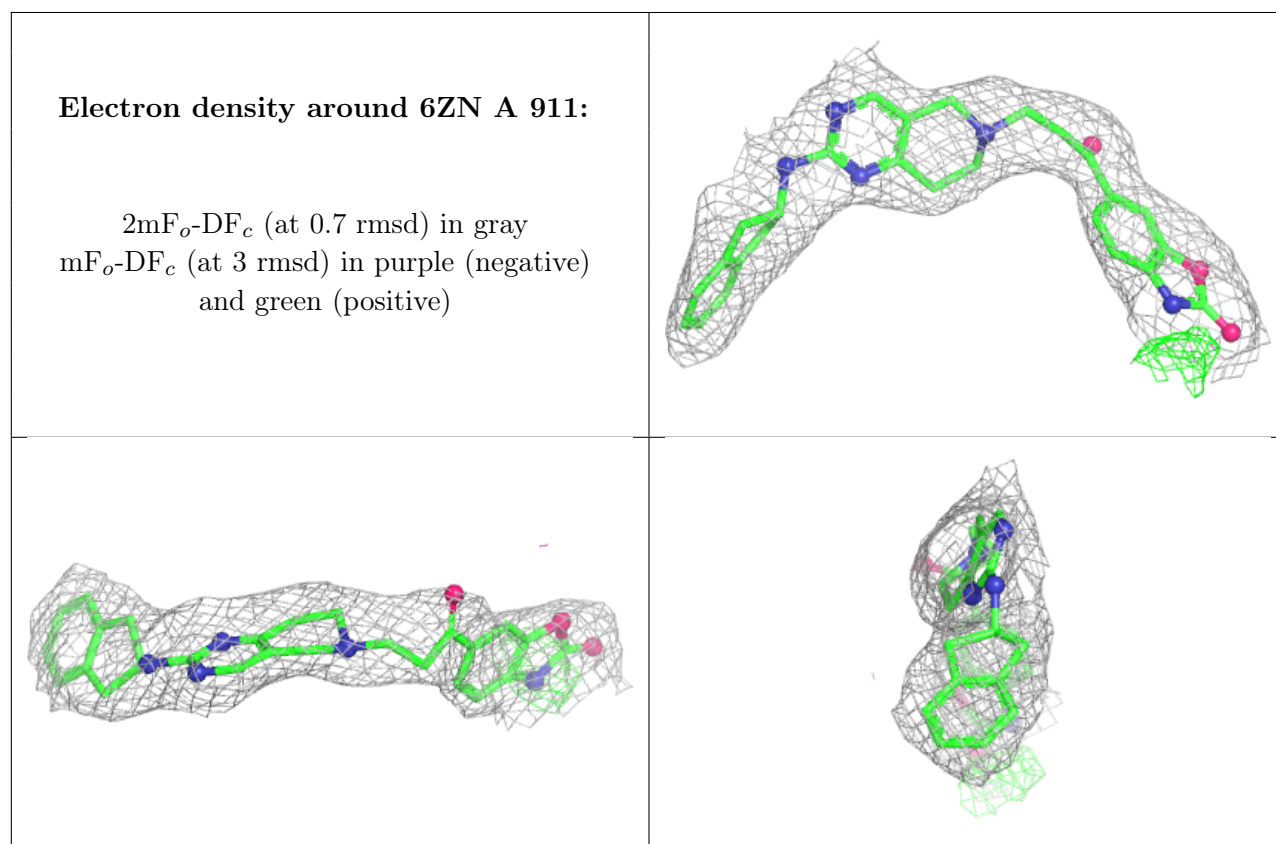
Mol	Type	Chain	Res	Atoms	RSCC	RSR	B-factors(Å ²)	Q<0.9
4	NAG	B	907	14/15	0.79	0.12	82,86,90,90	0
4	NAG	A	910	14/15	0.88	0.08	65,71,75,76	0
6	CL	A	912	1/1	0.92	0.07	51,51,51,51	0
6	CL	B	912	1/1	0.93	0.06	64,64,64,64	0
5	6ZN	A	911	34/34	0.94	0.09	27,47,61,61	0
5	6ZN	B	908	34/34	0.95	0.07	29,36,56,59	0
7	ZN	A	913	1/1	0.99	0.05	61,61,61,61	1
7	ZN	A	914	1/1	0.99	0.06	30,30,30,30	0

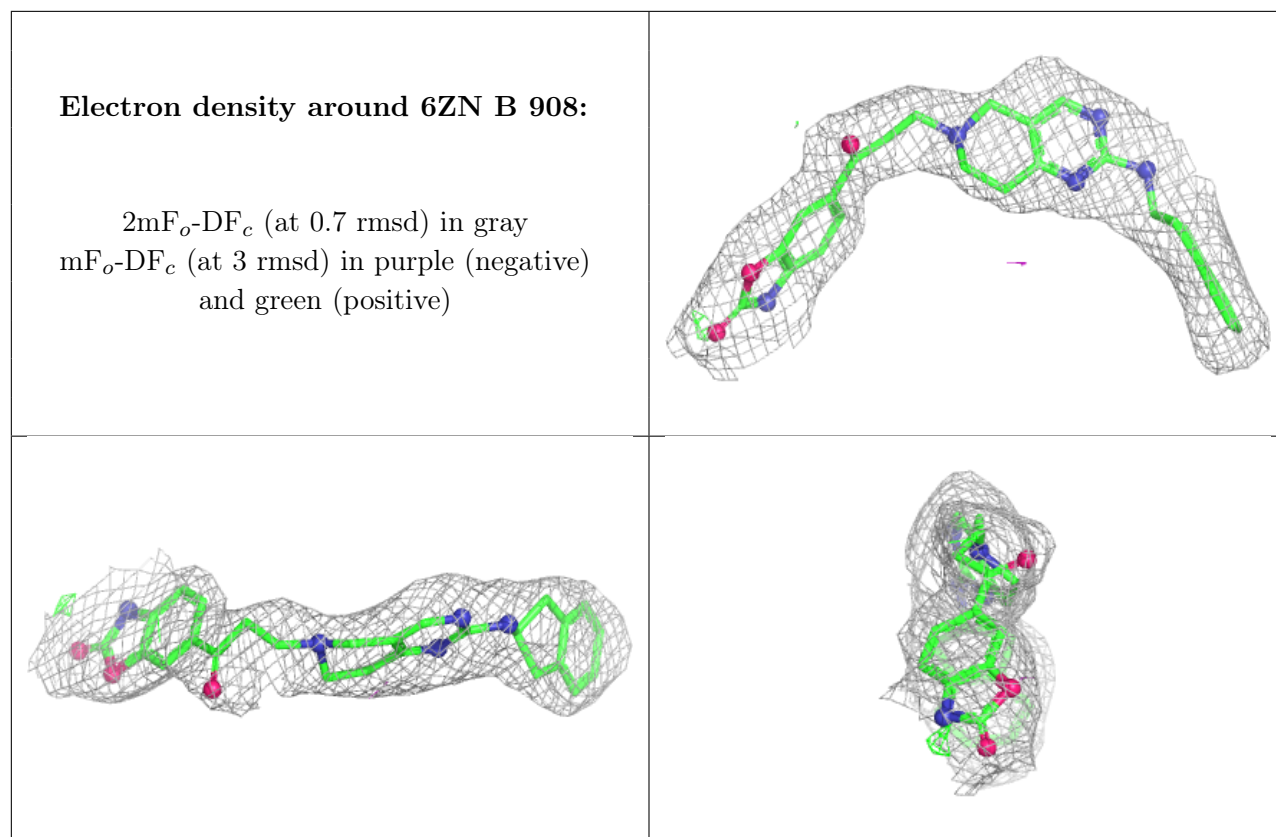
Continued on next page...

Continued from previous page...

Mol	Type	Chain	Res	Atoms	RSCC	RSR	B-factors(\AA^2)	Q<0.9
7	ZN	A	915	1/1	0.99	0.02	72,72,72,72	0
7	ZN	B	909	1/1	0.99	0.03	35,35,35,35	0
7	ZN	B	910	1/1	0.99	0.10	89,89,89,89	0
7	ZN	B	911	1/1	0.99	0.04	74,74,74,74	0

The following is a graphical depiction of the model fit to experimental electron density of all instances of the Ligand of Interest. In addition, ligands with molecular weight > 250 and outliers as shown on the geometry validation Tables will also be included. Each fit is shown from different orientation to approximate a three-dimensional view.





6.5 Other polymers [i](#)

There are no such residues in this entry.