



Full wwPDB X-ray Structure Validation Report ⓘ

Oct 10, 2023 – 09:47 AM EDT

PDB ID : 7L1H
Title : The aminoacrylate form of the wild-type Salmonella typhimurium Tryptophan Synthase in complex with inhibitor N-(4'-trifluoromethoxybenzenesulfonyl)-2-amino-1-ethylphosphate (F9F) at the enzyme alpha-site and cesium ion at the metal coordination site at 1.50 Angstrom resolution. Three water molecules are close to the aminoacrylate at the enzyme beta-site
Authors : Hilario, E.; Dunn, M.F.; Mueller, L.J.
Deposited on : 2020-12-14
Resolution : 1.50 Å(reported)

This is a Full wwPDB X-ray Structure Validation Report for a publicly released PDB entry.

We welcome your comments at validation@mail.wwpdb.org

A user guide is available at

<https://www.wwpdb.org/validation/2017/XrayValidationReportHelp>

with specific help available everywhere you see the ⓘ symbol.

The types of validation reports are described at

<http://www.wwpdb.org/validation/2017/FAQs#types>.

The following versions of software and data (see [references ⓘ](#)) were used in the production of this report:

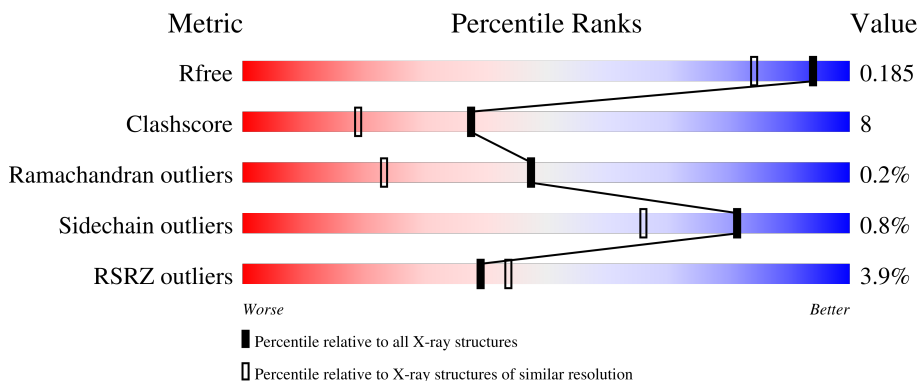
MolProbity : 4.02b-467
Mogul : 1.8.5 (274361), CSD as541be (2020)
Xtriage (Phenix) : 1.13
EDS : 2.35.1
buster-report : 1.1.7 (2018)
Percentile statistics : 20191225.v01 (using entries in the PDB archive December 25th 2019)
Refmac : 5.8.0158
CCP4 : 7.0.044 (Gargrove)
Ideal geometry (proteins) : Engh & Huber (2001)

1 Overall quality at a glance

The following experimental techniques were used to determine the structure:
X-RAY DIFFRACTION

The reported resolution of this entry is 1.50 Å.

Percentile scores (ranging between 0-100) for global validation metrics of the entry are shown in the following graphic. The table shows the number of entries on which the scores are based.



Metric	Whole archive (#Entries)	Similar resolution (#Entries, resolution range(Å))
R_{free}	130704	2936 (1.50-1.50)
Clashscore	141614	3144 (1.50-1.50)
Ramachandran outliers	138981	3066 (1.50-1.50)
Sidechain outliers	138945	3064 (1.50-1.50)
RSRZ outliers	127900	2884 (1.50-1.50)

The table below summarises the geometric issues observed across the polymeric chains and their fit to the electron density. The red, orange, yellow and green segments of the lower bar indicate the fraction of residues that contain outliers for ≥ 3 , 2, 1 and 0 types of geometric quality criteria respectively. A grey segment represents the fraction of residues that are not modelled. The numeric value for each fraction is indicated below the corresponding segment, with a dot representing fractions $\leq 5\%$. The upper red bar (where present) indicates the fraction of residues that have poor fit to the electron density. The numeric value is given above the bar.

Mol	Chain	Length	Quality of chain
1	A	268	
2	B	397	

The following table lists non-polymeric compounds, carbohydrate monomers and non-standard

Ideal geometry (DNA, RNA) : Parkinson et al. (1996)
 Validation Pipeline (wwPDB-VP) : 2.35.1

residues in protein, DNA, RNA chains that are outliers for geometric or electron-density-fit criteria:

Mol	Type	Chain	Res	Chirality	Geometry	Clashes	Electron density
5	PEG	A	304	-	-	X	-
5	PEG	B	406	-	-	X	-

2 Entry composition [i](#)

There are 10 unique types of molecules in this entry. The entry contains 6375 atoms, of which 0 are hydrogens and 0 are deuteriums.

In the tables below, the ZeroOcc column contains the number of atoms modelled with zero occupancy, the AltConf column contains the number of residues with at least one atom in alternate conformation and the Trace column contains the number of residues modelled with at most 2 atoms.

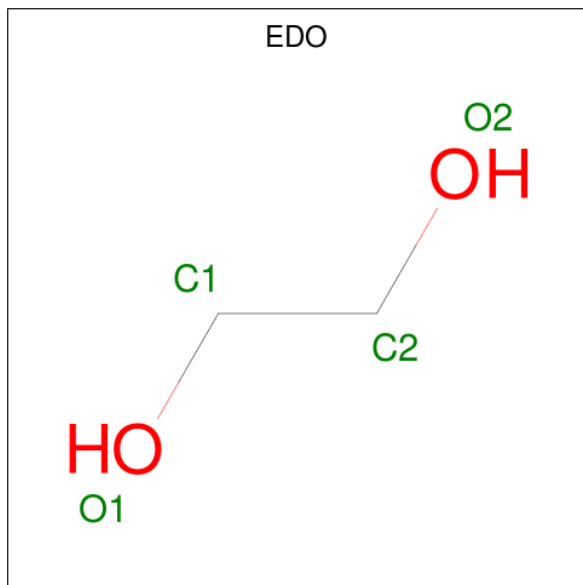
- Molecule 1 is a protein called Tryptophan synthase alpha chain.

Mol	Chain	Residues	Atoms					ZeroOcc	AltConf	Trace
			Total	C	N	O	S			
1	A	268	2117	1339	371	397	10	0	14	0

- Molecule 2 is a protein called Tryptophan synthase beta chain.

Mol	Chain	Residues	Atoms					ZeroOcc	AltConf	Trace
			Total	C	N	O	S			
2	B	395	3199	2010	565	602	22	0	26	0

- Molecule 3 is 1,2-ETHANEDIOL (three-letter code: EDO) (formula: C₂H₆O₂).



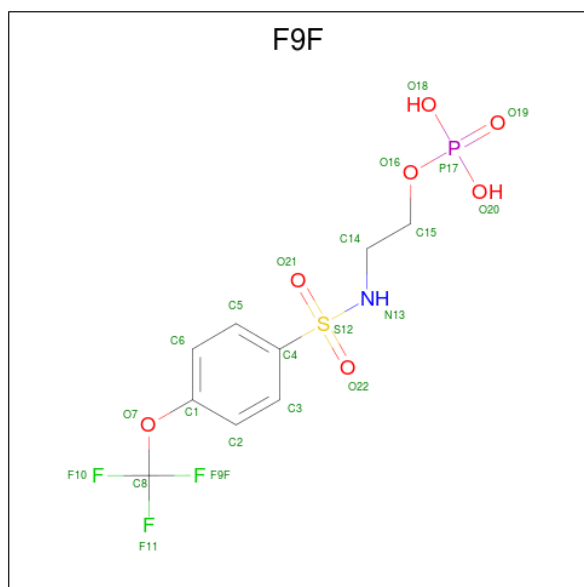
Mol	Chain	Residues	Atoms			ZeroOcc	AltConf
3	A	1	Total	C	O	0	0
			4	2	2		
3	A	1	Total	C	O	0	0
			4	2	2		

Continued on next page...

Continued from previous page...

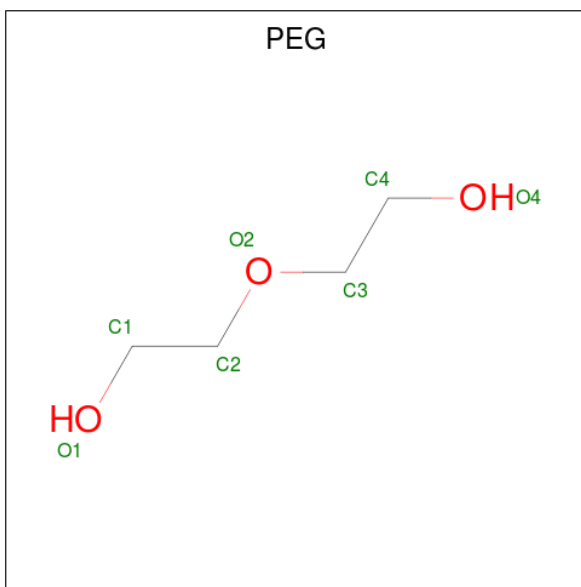
Mol	Chain	Residues	Atoms			ZeroOcc	AltConf
3	B	1	Total	C	O	0	0
			4	2	2		
3	B	1	Total	C	O	0	0
			4	2	2		

- Molecule 4 is 2-([4-(TRIFLUOROMETHOXY)PHENYL]SULFONYL)AMINO)ETHYL DIHYDROGEN PHOSPHATE (three-letter code: F9F) (formula: C₉H₁₁F₃NO₇PS) (labeled as "Ligand of Interest" by depositor).



Mol	Chain	Residues	Atoms					ZeroOcc	AltConf		
4	A	1	Total	C	F	N	O	P	S	0	0
			22	9	3	1	7	1	1		

- Molecule 5 is DI(HYDROXYETHYL)ETHER (three-letter code: PEG) (formula: C₄H₁₀O₃).

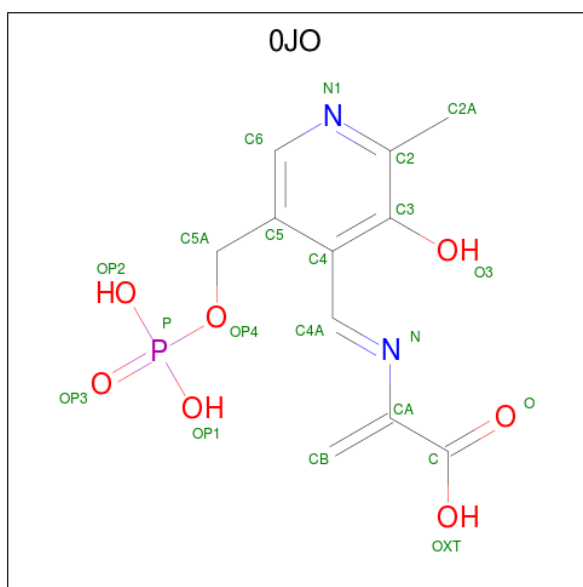


Mol	Chain	Residues	Atoms	ZeroOcc	AltConf
5	A	1	Total C O 7 4 3	0	0
5	B	1	Total C O 7 4 3	0	0
5	B	1	Total C O 7 4 3	0	0
5	B	1	Total C O 7 4 3	0	0
5	B	1	Total C O 7 4 3	0	0

- Molecule 6 is CHLORIDE ION (three-letter code: CL) (formula: Cl).

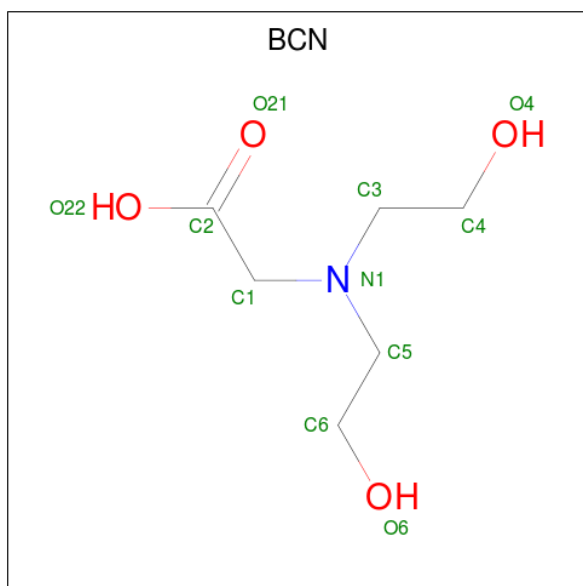
Mol	Chain	Residues	Atoms	ZeroOcc	AltConf
6	A	2	Total Cl 3 3	0	1
6	B	4	Total Cl 4 4	0	0

- Molecule 7 is 2-[(E)-{3-hydroxy-2-methyl-5-[(phosphonoxy)methyl]pyridin-4-yl}methylidene]amino}prop-2-enoic acid (three-letter code: 0JO) (formula: C₁₁H₁₃N₂O₇P) (labeled as "Ligand of Interest" by depositor).



Mol	Chain	Residues	Atoms					ZeroOcc	AltConf
			Total	C	N	O	P		
7	B	1	21	11	2	7	1	0	0

- Molecule 8 is BICINE (three-letter code: BCN) (formula: $C_6H_{13}NO_4$).



Mol	Chain	Residues	Atoms				ZeroOcc	AltConf
			Total	C	N	O		
8	B	1	11	6	1	4	0	0
8	B	1	11	6	1	4	0	0
8	B	1	11	6	1	4	0	0

- Molecule 9 is CESIUM ION (three-letter code: CS) (formula: Cs) (labeled as "Ligand of Interest" by depositor).

Mol	Chain	Residues	Atoms		ZeroOcc	AltConf
9	B	2	Total 4	Cs 4	0	2

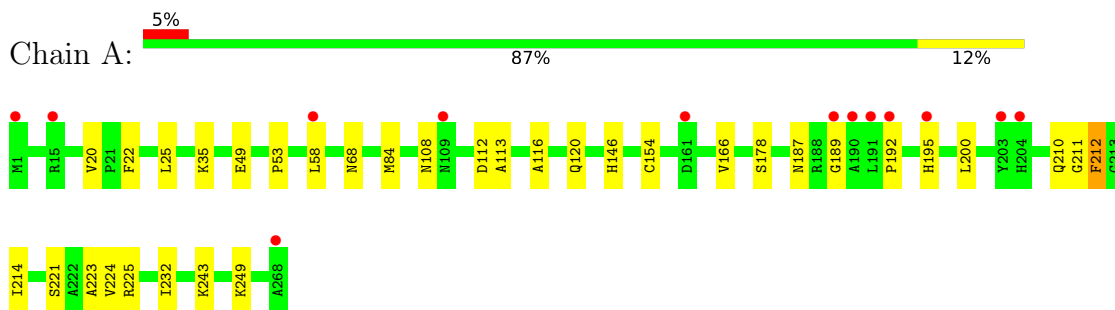
- Molecule 10 is water.

Mol	Chain	Residues	Atoms		ZeroOcc	AltConf
10	A	346	Total 357	O 357	0	11
10	B	545	Total 564	O 564	0	18

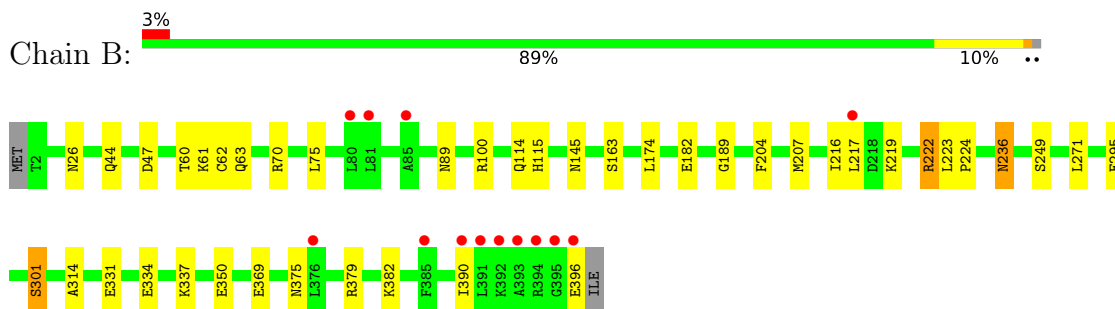
3 Residue-property plots [i](#)

These plots are drawn for all protein, RNA, DNA and oligosaccharide chains in the entry. The first graphic for a chain summarises the proportions of the various outlier classes displayed in the second graphic. The second graphic shows the sequence view annotated by issues in geometry and electron density. Residues are color-coded according to the number of geometric quality criteria for which they contain at least one outlier: green = 0, yellow = 1, orange = 2 and red = 3 or more. A red dot above a residue indicates a poor fit to the electron density ($RSRZ > 2$). Stretches of 2 or more consecutive residues without any outlier are shown as a green connector. Residues present in the sample, but not in the model, are shown in grey.

- Molecule 1: Tryptophan synthase alpha chain



- Molecule 2: Tryptophan synthase beta chain



4 Data and refinement statistics

Property	Value	Source
Space group	C 1 2 1	Depositor
Cell constants a, b, c, α , β , γ	183.97Å 59.73Å 67.42Å 90.00° 94.70° 90.00°	Depositor
Resolution (Å)	39.40 – 1.50 39.40 – 1.50	Depositor EDS
% Data completeness (in resolution range)	89.5 (39.40-1.50) 89.5 (39.40-1.50)	Depositor EDS
R_{merge}	0.05	Depositor
R_{sym}	0.05	Depositor
$\langle I/\sigma(I) \rangle$ ¹	1.92 (at 1.50Å)	Xtrriage
Refinement program	REFMAC 5.8.0258	Depositor
R, R_{free}	0.138 , 0.185 0.138 , 0.185	Depositor DCC
R_{free} test set	5212 reflections (4.99%)	wwPDB-VP
Wilson B-factor (Å ²)	17.5	Xtrriage
Anisotropy	0.202	Xtrriage
Bulk solvent k_{sol} (e/Å ³), B_{sol} (Å ²)	0.33 , 57.7	EDS
L-test for twinning ²	$\langle L \rangle = 0.50$, $\langle L^2 \rangle = 0.34$	Xtrriage
Estimated twinning fraction	No twinning to report.	Xtrriage
F_o, F_c correlation	0.98	EDS
Total number of atoms	6375	wwPDB-VP
Average B, all atoms (Å ²)	23.0	wwPDB-VP

Xtrriage's analysis on translational NCS is as follows: *The largest off-origin peak in the Patterson function is 5.42% of the height of the origin peak. No significant pseudotranslation is detected.*

¹Intensities estimated from amplitudes.

²Theoretical values of $\langle |L| \rangle$, $\langle L^2 \rangle$ for acentric reflections are 0.5, 0.333 respectively for untwinned datasets, and 0.375, 0.2 for perfectly twinned datasets.

5 Model quality

5.1 Standard geometry

Bond lengths and bond angles in the following residue types are not validated in this section: F9F, EDO, PEG, BCN, OJO, CL, CS

The Z score for a bond length (or angle) is the number of standard deviations the observed value is removed from the expected value. A bond length (or angle) with $|Z| > 5$ is considered an outlier worth inspection. RMSZ is the root-mean-square of all Z scores of the bond lengths (or angles).

Mol	Chain	Bond lengths		Bond angles	
		RMSZ	# Z >5	RMSZ	# Z >5
1	A	0.35	0/2173	0.65	0/2948
2	B	0.42	0/3296	0.68	0/4442
All	All	0.39	0/5469	0.67	0/7390

There are no bond length outliers.

There are no bond angle outliers.

There are no chirality outliers.

There are no planarity outliers.

5.2 Too-close contacts

In the following table, the Non-H and H(model) columns list the number of non-hydrogen atoms and hydrogen atoms in the chain respectively. The H(added) column lists the number of hydrogen atoms added and optimized by MolProbity. The Clashes column lists the number of clashes within the asymmetric unit, whereas Symm-Clashes lists symmetry-related clashes.

Mol	Chain	Non-H	H(model)	H(added)	Clashes	Symm-Clashes
1	A	2117	0	2124	35	0
2	B	3199	0	3210	47	0
3	A	8	0	12	5	0
3	B	8	0	12	0	0
4	A	22	0	9	0	0
5	A	7	0	10	4	0
5	B	28	0	40	11	0
6	A	3	0	0	1	0
6	B	4	0	0	0	0
7	B	21	0	9	0	0
8	B	33	0	36	0	0

Continued on next page...

Continued from previous page...

Mol	Chain	Non-H	H(model)	H(added)	Clashes	Symm-Clashes
9	B	4	0	0	0	0
10	A	357	0	0	7	0
10	B	564	0	0	23	0
All	All	6375	0	5462	84	0

The all-atom clashscore is defined as the number of clashes found per 1000 atoms (including hydrogen atoms). The all-atom clashscore for this structure is 8.

All (84) close contacts within the same asymmetric unit are listed below, sorted by their clash magnitude.

Atom-1	Atom-2	Interatomic distance (Å)	Clash overlap (Å)
2:B:379[A]:ARG:NH1	10:B:501:HOH:O	1.92	1.03
2:B:219[A]:LYS:HE2	10:B:530:HOH:O	1.65	0.96
2:B:379[B]:ARG:NH1	10:B:502:HOH:O	2.02	0.91
1:A:192:PRO:HG2	1:A:223:ALA:HA	1.54	0.90
2:B:100[B]:ARG:HD2	10:B:550:HOH:O	1.73	0.86
2:B:223:LEU:HD23	10:B:786:HOH:O	1.77	0.85
1:A:210[B]:GLN:HG2	1:A:214:ILE:HD11	1.64	0.80
1:A:195[A]:HIS:HD2	10:A:598:HOH:O	1.66	0.77
2:B:60:THR:HG23	5:B:406:PEG:H41	1.65	0.77
1:A:192:PRO:HG3	1:A:210[B]:GLN:OE1	1.87	0.74
2:B:89:ASN:HB3	2:B:207[B]:MET:HE1	1.71	0.73
1:A:192:PRO:CG	1:A:223:ALA:HA	2.20	0.70
2:B:369[B]:GLU:OE2	10:B:503:HOH:O	2.08	0.70
1:A:58[B]:LEU:HD12	2:B:174:LEU:HD23	1.74	0.69
2:B:236:ASN:HD22	2:B:375:ASN:HD22	1.41	0.69
1:A:113:ALA:HA	5:A:304:PEG:H22	1.74	0.68
2:B:182:GLU:O	10:B:504:HOH:O	2.10	0.68
1:A:243:LYS:NZ	10:A:401:HOH:O	2.26	0.68
2:B:63[A]:GLN:HG2	5:B:406:PEG:H22	1.75	0.67
2:B:70[B]:ARG:NH2	2:B:369[B]:GLU:OE1	2.28	0.67
2:B:217:LEU:HG	10:B:786:HOH:O	1.94	0.66
2:B:216[A]:ILE:HG23	10:B:786:HOH:O	1.95	0.66
1:A:221:SER:HB3	1:A:225[A]:ARG:HH12	1.63	0.63
2:B:100[B]:ARG:CD	10:B:550:HOH:O	2.38	0.62
1:A:249:LYS:H	3:A:301:EDO:H12	1.64	0.62
2:B:114:GLN:HE21	2:B:145:ASN:HD21	1.46	0.62
1:A:178[B]:SER:OG	1:A:212:PHE:O	2.12	0.62
1:A:178[A]:SER:HB3	1:A:189:GLY:HA3	1.84	0.60
1:A:112:ASP:OD1	1:A:146:HIS:HE1	1.83	0.60
2:B:70[B]:ARG:CZ	2:B:369[B]:GLU:OE1	2.50	0.60

Continued on next page...

Continued from previous page...

Atom-1	Atom-2	Interatomic distance (Å)	Clash overlap (Å)
1:A:35:LYS:NZ	10:A:402:HOH:O	2.36	0.59
2:B:63[A]:GLN:CG	5:B:406:PEG:H22	2.33	0.58
1:A:146:HIS:HD2	3:A:302:EDO:H22	1.69	0.58
2:B:222[B]:ARG:NH1	10:B:516:HOH:O	2.37	0.57
2:B:44[B]:GLN:HG3	10:B:731:HOH:O	2.05	0.57
2:B:60:THR:HG23	5:B:406:PEG:C4	2.34	0.56
1:A:116:ALA:HB3	5:A:304:PEG:H32	1.86	0.55
2:B:301[A]:SER:OG	2:B:350:GLU:HG3	2.07	0.55
1:A:249:LYS:H	3:A:301:EDO:C1	2.20	0.55
1:A:116:ALA:CB	5:A:304:PEG:H32	2.38	0.54
2:B:70[B]:ARG:NE	2:B:369[B]:GLU:OE1	2.40	0.53
2:B:249:SER:OG	10:B:505:HOH:O	2.18	0.52
1:A:154[B]:CYS:SG	1:A:200:LEU:HD21	2.50	0.51
2:B:337:LYS:NZ	2:B:396:GLU:OE2	2.34	0.51
1:A:116:ALA:O	1:A:120[A]:GLN:HG3	2.10	0.51
2:B:204:PHE:O	2:B:207[B]:MET:HE1	2.11	0.51
1:A:146:HIS:CD2	3:A:302:EDO:H22	2.46	0.50
2:B:63[C]:GLN:HE22	5:B:406:PEG:H22	1.75	0.50
1:A:221:SER:HB3	1:A:225[A]:ARG:NH1	2.26	0.49
2:B:114:GLN:NE2	2:B:145:ASN:HD21	2.10	0.49
1:A:195[A]:HIS:CD2	10:A:598:HOH:O	2.51	0.49
5:B:404:PEG:H32	10:B:909:HOH:O	2.12	0.49
1:A:108:ASN:HA	10:B:773:HOH:O	2.13	0.48
2:B:271[B]:LEU:HD11	2:B:314:ALA:HA	1.95	0.48
2:B:47:ASP:OD1	10:B:507:HOH:O	2.20	0.47
1:A:25:LEU:HB3	1:A:84[B]:MET:CE	2.45	0.47
2:B:63[C]:GLN:NE2	10:B:525:HOH:O	2.47	0.47
5:B:404:PEG:H12	10:B:844:HOH:O	2.15	0.47
2:B:61:LYS:O	5:B:406:PEG:H21	2.14	0.47
2:B:216[A]:ILE:CG2	10:B:786:HOH:O	2.58	0.47
2:B:390:ILE:HG13	10:B:548:HOH:O	2.13	0.47
1:A:22:PHE:HA	1:A:49:GLU:O	2.15	0.46
1:A:113:ALA:CA	5:A:304:PEG:H22	2.44	0.46
1:A:25:LEU:HB3	1:A:84[B]:MET:HE3	1.98	0.46
2:B:115:HIS:CE1	2:B:189:GLY:HA2	2.51	0.45
6:A:305[B]:CL:CL	10:A:582:HOH:O	2.58	0.45
1:A:224:VAL:HG11	10:A:418:HOH:O	2.17	0.45
1:A:154[B]:CYS:SG	1:A:166:VAL:HG11	2.57	0.44
2:B:26:ASN:ND2	10:B:517:HOH:O	2.37	0.44
1:A:187:ASN:ND2	10:A:621[B]:HOH:O	2.45	0.44
2:B:331:GLU:CG	5:B:404:PEG:H31	2.48	0.44

Continued on next page...

Continued from previous page...

Atom-1	Atom-2	Interatomic distance (Å)	Clash overlap (Å)
2:B:61:LYS:H	5:B:406:PEG:C4	2.32	0.43
1:A:53:PRO:HA	1:A:68:ASN:OD1	2.18	0.43
1:A:211:GLY:O	1:A:212:PHE:HB2	2.19	0.43
2:B:62[B]:CYS:SG	2:B:75:LEU:CD1	3.07	0.42
2:B:114:GLN:HE21	2:B:382:LYS:HD3	1.85	0.42
2:B:216[B]:ILE:HG22	2:B:222[B]:ARG:O	2.19	0.42
2:B:295[A]:GLU:OE2	10:B:506:HOH:O	2.19	0.42
2:B:334[B]:GLU:HG2	10:B:606:HOH:O	2.19	0.42
2:B:216[A]:ILE:HG21	2:B:224:PRO:HD3	2.02	0.41
1:A:249:LYS:HB2	3:A:301:EDO:H11	2.02	0.41
1:A:20:VAL:O	1:A:232:ILE:HA	2.21	0.41
2:B:61:LYS:O	5:B:406:PEG:C2	2.68	0.41
2:B:63[C]:GLN:N	2:B:63[C]:GLN:OE1	2.54	0.40

There are no symmetry-related clashes.

5.3 Torsion angles [i](#)

5.3.1 Protein backbone [i](#)

In the following table, the Percentiles column shows the percent Ramachandran outliers of the chain as a percentile score with respect to all X-ray entries followed by that with respect to entries of similar resolution.

The Analysed column shows the number of residues for which the backbone conformation was analysed, and the total number of residues.

Mol	Chain	Analysed	Favoured	Allowed	Outliers	Percentiles	
1	A	280/268 (104%)	274 (98%)	5 (2%)	1 (0%)	34	13
2	B	422/397 (106%)	412 (98%)	10 (2%)	0	100	100
All	All	702/665 (106%)	686 (98%)	15 (2%)	1 (0%)	47	25

All (1) Ramachandran outliers are listed below:

Mol	Chain	Res	Type
1	A	212	PHE

5.3.2 Protein sidechains [i](#)

In the following table, the Percentiles column shows the percent sidechain outliers of the chain as a percentile score with respect to all X-ray entries followed by that with respect to entries of similar resolution.

The Analysed column shows the number of residues for which the sidechain conformation was analysed, and the total number of residues.

Mol	Chain	Analysed	Rotameric	Outliers	Percentiles	
1	A	222/208 (107%)	222 (100%)	0	100	100
2	B	338/311 (109%)	331 (98%)	7 (2%)	53	23
All	All	560/519 (108%)	553 (99%)	7 (1%)	81	44

All (7) residues with a non-rotameric sidechain are listed below:

Mol	Chain	Res	Type
2	B	163	SER
2	B	222[A]	ARG
2	B	222[B]	ARG
2	B	236	ASN
2	B	301[A]	SER
2	B	301[B]	SER
2	B	301[C]	SER

Sometimes sidechains can be flipped to improve hydrogen bonding and reduce clashes. All (5) such sidechains are listed below:

Mol	Chain	Res	Type
1	A	146	HIS
2	B	51	ASN
2	B	64	ASN
2	B	114	GLN
2	B	236	ASN

5.3.3 RNA [i](#)

There are no RNA molecules in this entry.

5.4 Non-standard residues in protein, DNA, RNA chains [i](#)

There are no non-standard protein/DNA/RNA residues in this entry.

5.5 Carbohydrates [i](#)

There are no monosaccharides in this entry.

5.6 Ligand geometry [i](#)

Of 25 ligands modelled in this entry, 11 are monoatomic - leaving 14 for Mogul analysis.

In the following table, the Counts columns list the number of bonds (or angles) for which Mogul statistics could be retrieved, the number of bonds (or angles) that are observed in the model and the number of bonds (or angles) that are defined in the Chemical Component Dictionary. The Link column lists molecule types, if any, to which the group is linked. The Z score for a bond length (or angle) is the number of standard deviations the observed value is removed from the expected value. A bond length (or angle) with $|Z| > 2$ is considered an outlier worth inspection. RMSZ is the root-mean-square of all Z scores of the bond lengths (or angles).

Mol	Type	Chain	Res	Link	Bond lengths			Bond angles		
					Counts	RMSZ	# Z > 2	Counts	RMSZ	# Z > 2
3	EDO	B	407	-	3,3,3	0.05	0	2,2,2	0.23	0
5	PEG	B	403	-	6,6,6	0.11	0	5,5,5	0.07	0
5	PEG	B	406	-	6,6,6	0.39	0	5,5,5	0.49	0
8	BCN	B	410	-	10,10,10	1.02	1 (10%)	11,11,11	0.65	0
3	EDO	A	302	-	3,3,3	0.20	0	2,2,2	0.56	0
5	PEG	B	404	-	6,6,6	0.14	0	5,5,5	0.10	0
8	BCN	B	408	-	10,10,10	0.76	0	11,11,11	0.86	0
4	F9F	A	303	-	22,22,22	0.40	0	32,33,33	0.80	1 (3%)
5	PEG	A	304	-	6,6,6	0.14	0	5,5,5	0.17	0
3	EDO	B	401	-	3,3,3	0.08	0	2,2,2	0.19	0
5	PEG	B	405	-	6,6,6	0.29	0	5,5,5	0.18	0
8	BCN	B	409	-	10,10,10	0.67	0	11,11,11	0.63	0
3	EDO	A	301	-	3,3,3	0.05	0	2,2,2	0.23	0
7	OJO	B	402	-	20,21,21	1.06	2 (10%)	23,30,30	0.76	0

In the following table, the Chirals column lists the number of chiral outliers, the number of chiral centers analysed, the number of these observed in the model and the number defined in the Chemical Component Dictionary. Similar counts are reported in the Torsion and Rings columns. '-' means no outliers of that kind were identified.

Mol	Type	Chain	Res	Link	Chirals	Torsions	Rings
3	EDO	B	407	-	-	1/1/1/1	-
5	PEG	B	403	-	-	2/4/4/4	-
5	PEG	B	406	-	-	3/4/4/4	-
8	BCN	B	410	-	-	1/10/10/10	-
3	EDO	A	302	-	-	1/1/1/1	-

Continued on next page...

Continued from previous page...

Mol	Type	Chain	Res	Link	Chirals	Torsions	Rings
5	PEG	B	404	-	-	2/4/4/4	-
8	BCN	B	408	-	-	5/10/10/10	-
4	F9F	A	303	-	-	7/20/20/20	0/1/1/1
5	PEG	A	304	-	-	3/4/4/4	-
3	EDO	B	401	-	-	0/1/1/1	-
5	PEG	B	405	-	-	2/4/4/4	-
8	BCN	B	409	-	-	3/10/10/10	-
3	EDO	A	301	-	-	1/1/1/1	-
7	OJO	B	402	-	-	0/10/15/15	0/1/1/1

All (3) bond length outliers are listed below:

Mol	Chain	Res	Type	Atoms	Z	Observed(Å)	Ideal(Å)
7	B	402	OJO	CA-C	-3.28	1.43	1.50
8	B	410	BCN	O21-C2	2.69	1.31	1.22
7	B	402	OJO	OXT-C	-2.48	1.23	1.30

All (1) bond angle outliers are listed below:

Mol	Chain	Res	Type	Atoms	Z	Observed(°)	Ideal(°)
4	A	303	F9F	O22-S12-C4	-2.15	105.32	107.97

There are no chirality outliers.

All (31) torsion outliers are listed below:

Mol	Chain	Res	Type	Atoms
5	B	406	PEG	C4-C3-O2-C2
5	A	304	PEG	O1-C1-C2-O2
5	B	406	PEG	O1-C1-C2-O2
5	B	403	PEG	O2-C3-C4-O4
8	B	408	BCN	N1-C3-C4-O4
5	A	304	PEG	O2-C3-C4-O4
3	A	301	EDO	O1-C1-C2-O2
3	A	302	EDO	O1-C1-C2-O2
3	B	407	EDO	O1-C1-C2-O2
4	A	303	F9F	C5-C4-S12-O21
8	B	408	BCN	C2-C1-N1-C3
4	A	303	F9F	C3-C4-S12-O21
5	B	404	PEG	O1-C1-C2-O2
8	B	409	BCN	N1-C3-C4-O4

Continued on next page...

Continued from previous page...

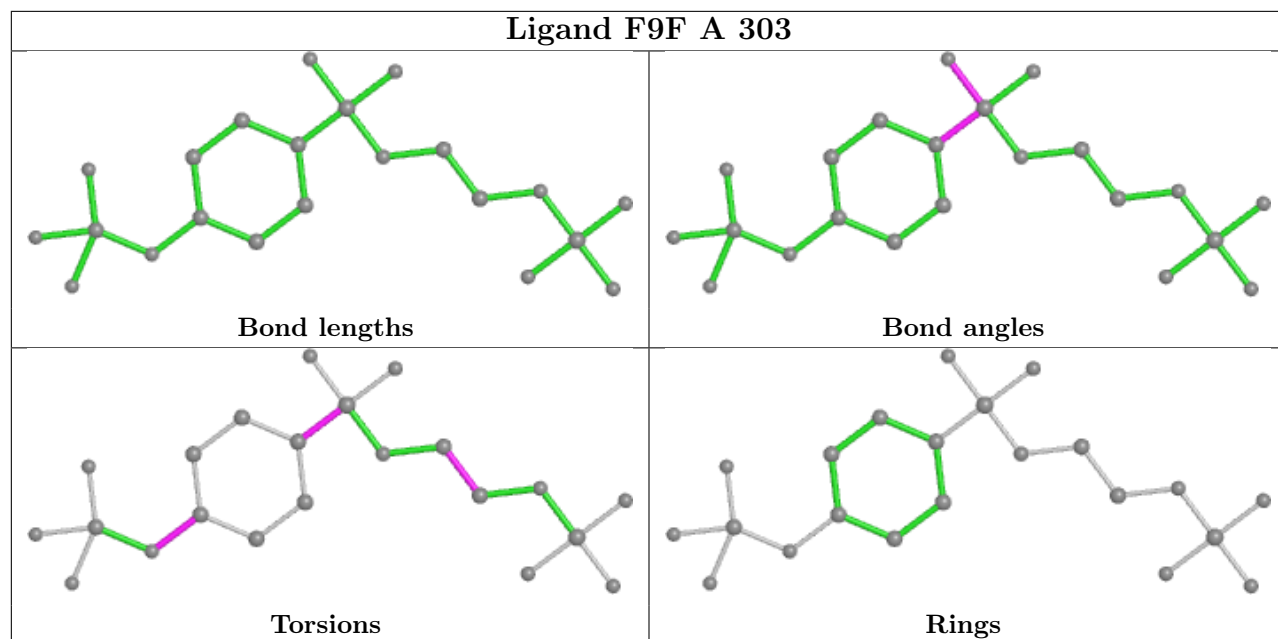
Mol	Chain	Res	Type	Atoms
8	B	408	BCN	C2-C1-N1-C5
5	B	405	PEG	C1-C2-O2-C3
4	A	303	F9F	N13-C14-C15-O16
5	A	304	PEG	C4-C3-O2-C2
5	B	403	PEG	C1-C2-O2-C3
5	B	405	PEG	O1-C1-C2-O2
5	B	404	PEG	O2-C3-C4-O4
4	A	303	F9F	C2-C1-O7-C8
8	B	408	BCN	C4-C3-N1-C5
4	A	303	F9F	C5-C4-S12-N13
4	A	303	F9F	C6-C1-O7-C8
8	B	409	BCN	C2-C1-N1-C3
8	B	410	BCN	C2-C1-N1-C5
8	B	408	BCN	C4-C3-N1-C1
5	B	406	PEG	O2-C3-C4-O4
4	A	303	F9F	C3-C4-S12-N13
8	B	409	BCN	N1-C5-C6-O6

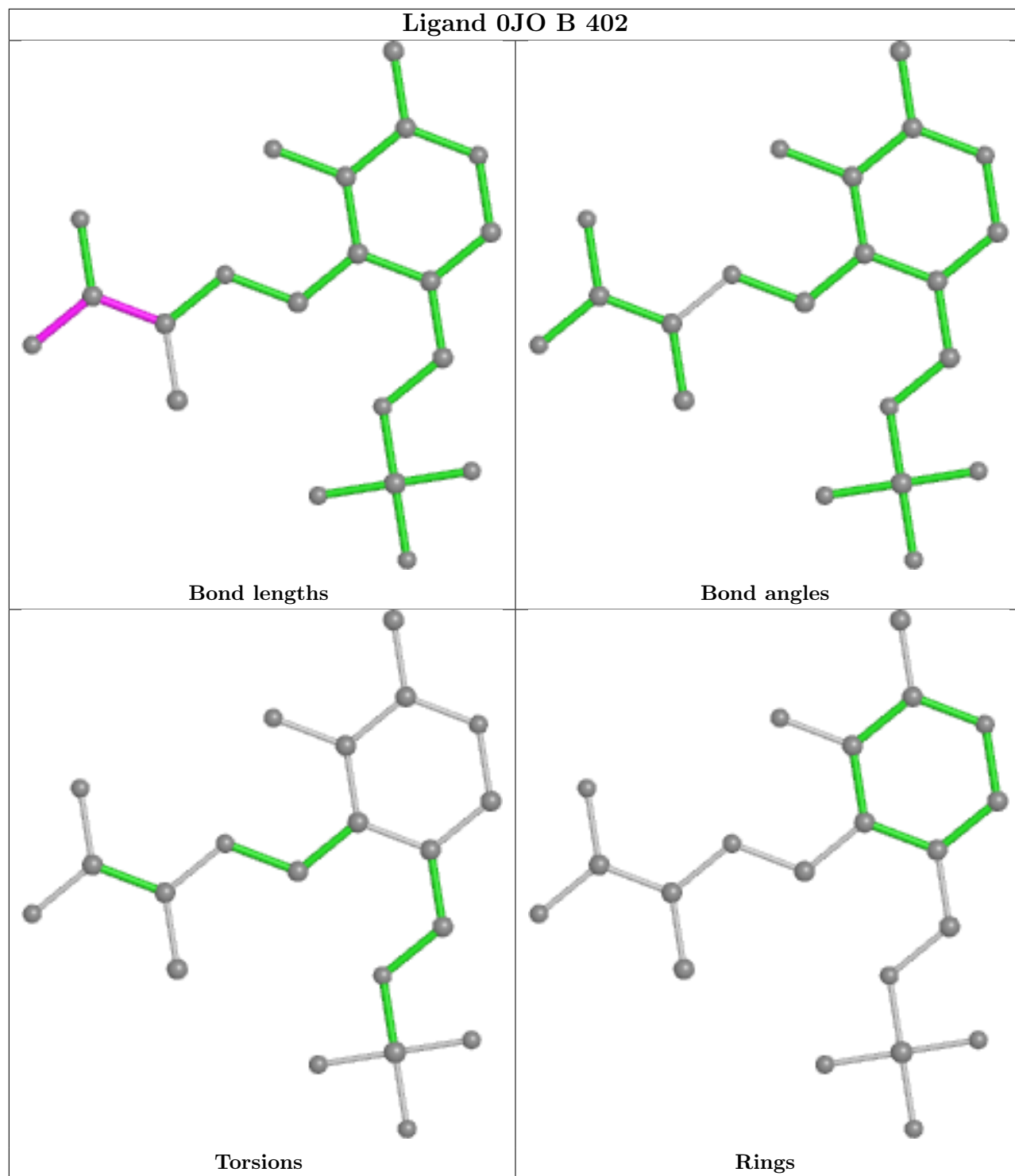
There are no ring outliers.

5 monomers are involved in 20 short contacts:

Mol	Chain	Res	Type	Clashes	Symm-Clashes
5	B	406	PEG	8	0
3	A	302	EDO	2	0
5	B	404	PEG	3	0
5	A	304	PEG	4	0
3	A	301	EDO	3	0

The following is a two-dimensional graphical depiction of Mogul quality analysis of bond lengths, bond angles, torsion angles, and ring geometry for all instances of the Ligand of Interest. In addition, ligands with molecular weight > 250 and outliers as shown on the validation Tables will also be included. For torsion angles, if less than 5% of the Mogul distribution of torsion angles is within 10 degrees of the torsion angle in question, then that torsion angle is considered an outlier. Any bond that is central to one or more torsion angles identified as an outlier by Mogul will be highlighted in the graph. For rings, the root-mean-square deviation (RMSD) between the ring in question and similar rings identified by Mogul is calculated over all ring torsion angles. If the average RMSD is greater than 60 degrees and the minimal RMSD between the ring in question and any Mogul-identified rings is also greater than 60 degrees, then that ring is considered an outlier. The outliers are highlighted in purple. The color gray indicates Mogul did not find sufficient equivalents in the CSD to analyse the geometry.





5.7 Other polymers [\(i\)](#)

There are no such residues in this entry.

5.8 Polymer linkage issues

There are no chain breaks in this entry.

6 Fit of model and data

6.1 Protein, DNA and RNA chains

In the following table, the column labelled ‘#RSRZ > 2’ contains the number (and percentage) of RSRZ outliers, followed by percent RSRZ outliers for the chain as percentile scores relative to all X-ray entries and entries of similar resolution. The OWAB column contains the minimum, median, 95th percentile and maximum values of the occupancy-weighted average B-factor per residue. The column labelled ‘Q < 0.9’ lists the number of (and percentage) of residues with an average occupancy less than 0.9.

Mol	Chain	Analysed	<RSRZ>	#RSRZ>2	OWAB(Å ²)	Q<0.9
1	A	268/268 (100%)	0.13	13 (4%) 29 32	14, 22, 42, 66	0
2	B	395/397 (99%)	0.02	13 (3%) 46 51	10, 15, 26, 66	0
All	All	663/665 (99%)	0.06	26 (3%) 39 44	10, 18, 36, 66	0

All (26) RSRZ outliers are listed below:

Mol	Chain	Res	Type	RSRZ
1	A	190	ALA	7.1
2	B	395	GLY	6.5
2	B	393	ALA	6.1
1	A	191	LEU	6.1
1	A	268	ALA	5.7
2	B	392	LYS	5.6
1	A	192	PRO	4.5
2	B	396	GLU	3.7
2	B	80	LEU	3.3
2	B	391	LEU	3.2
2	B	394[A]	ARG	3.1
1	A	1	MET	3.1
2	B	390	ILE	3.0
1	A	203	TYR	2.8
2	B	385	PHE	2.6
1	A	109	ASN	2.6
1	A	15	ARG	2.6
1	A	189	GLY	2.4
2	B	81	LEU	2.4
1	A	204	HIS	2.3
1	A	161	ASP	2.3
2	B	217	LEU	2.2
1	A	58[A]	LEU	2.1
2	B	85	ALA	2.1

Continued on next page...

Continued from previous page...

Mol	Chain	Res	Type	RSRZ
2	B	376[A]	LEU	2.1
1	A	195[A]	HIS	2.1

6.2 Non-standard residues in protein, DNA, RNA chains [i](#)

There are no non-standard protein/DNA/RNA residues in this entry.

6.3 Carbohydrates [i](#)

There are no monosaccharides in this entry.

6.4 Ligands [i](#)

In the following table, the Atoms column lists the number of modelled atoms in the group and the number defined in the chemical component dictionary. The B-factors column lists the minimum, median, 95th percentile and maximum values of B factors of atoms in the group. The column labelled 'Q<0.9' lists the number of atoms with occupancy less than 0.9.

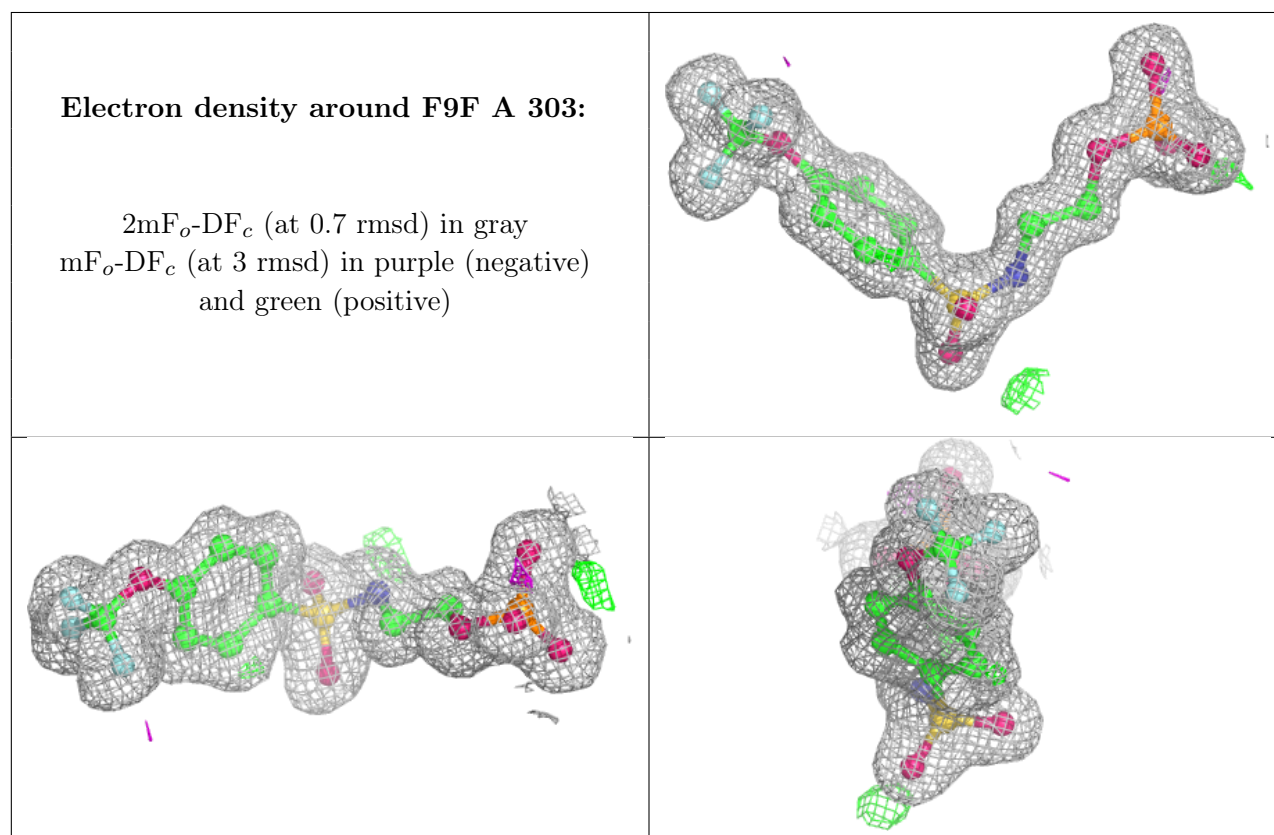
Mol	Type	Chain	Res	Atoms	RSCC	RSR	B-factors(Å ²)	Q<0.9
6	CL	B	411	1/1	0.65	0.08	79,79,79,79	0
3	EDO	B	407	4/4	0.70	0.15	52,60,61,63	0
5	PEG	B	405	7/7	0.77	0.16	35,35,41,45	0
5	PEG	A	304	7/7	0.79	0.34	39,48,50,56	0
5	PEG	B	404	7/7	0.80	0.22	43,48,57,63	0
5	PEG	B	406	7/7	0.86	0.20	20,22,30,35	7
3	EDO	A	302	4/4	0.86	0.32	38,43,53,55	0
8	BCN	B	408	11/11	0.89	0.21	21,32,37,38	0
8	BCN	B	410	11/11	0.89	0.19	16,27,39,43	0
5	PEG	B	403	7/7	0.92	0.13	45,49,56,59	0
3	EDO	B	401	4/4	0.93	0.15	40,47,49,56	0
3	EDO	A	301	4/4	0.93	0.21	47,50,52,66	0
8	BCN	B	409	11/11	0.95	0.12	15,24,30,33	0
6	CL	A	305[A]	1/1	0.96	0.20	51,51,51,51	1
6	CL	A	305[B]	1/1	0.96	0.20	39,39,39,39	1
6	CL	A	306	1/1	0.98	0.12	49,49,49,49	0
4	F9F	A	303	22/22	0.98	0.06	16,19,21,22	0
7	OJO	B	402	21/21	0.98	0.09	11,14,16,18	0
6	CL	B	412	1/1	0.99	0.05	56,56,56,56	0
6	CL	B	413	1/1	0.99	0.10	48,48,48,48	0
6	CL	B	414	1/1	1.00	0.06	34,34,34,34	0

Continued on next page...

Continued from previous page...

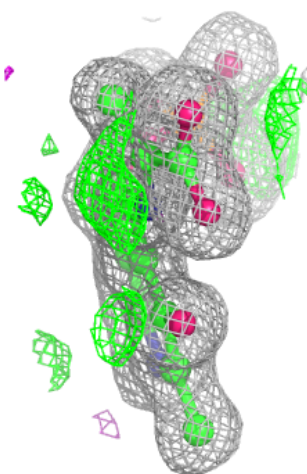
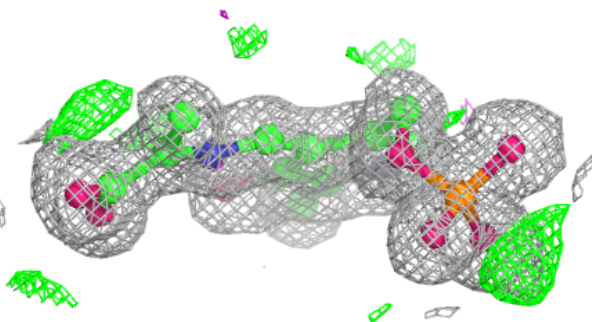
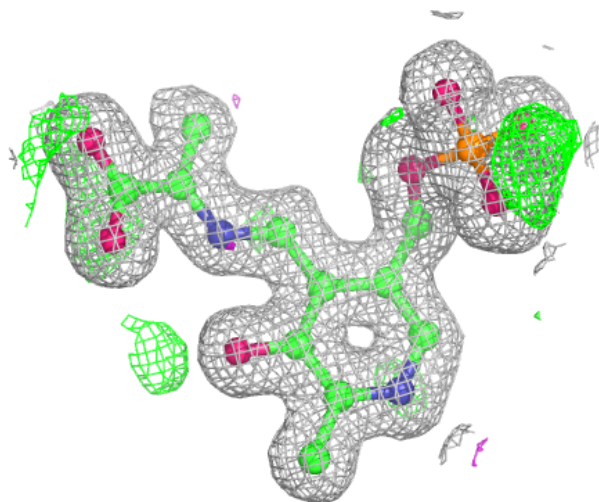
Mol	Type	Chain	Res	Atoms	RSCC	RSR	B-factors(\AA^2)	Q<0.9
9	CS	B	415[A]	1/1	1.00	0.04	24,24,24,24	1
9	CS	B	415[B]	1/1	1.00	0.04	97,97,97,97	1
9	CS	B	416[A]	1/1	1.00	0.06	17,17,17,17	1
9	CS	B	416[B]	1/1	1.00	0.06	15,15,15,15	1

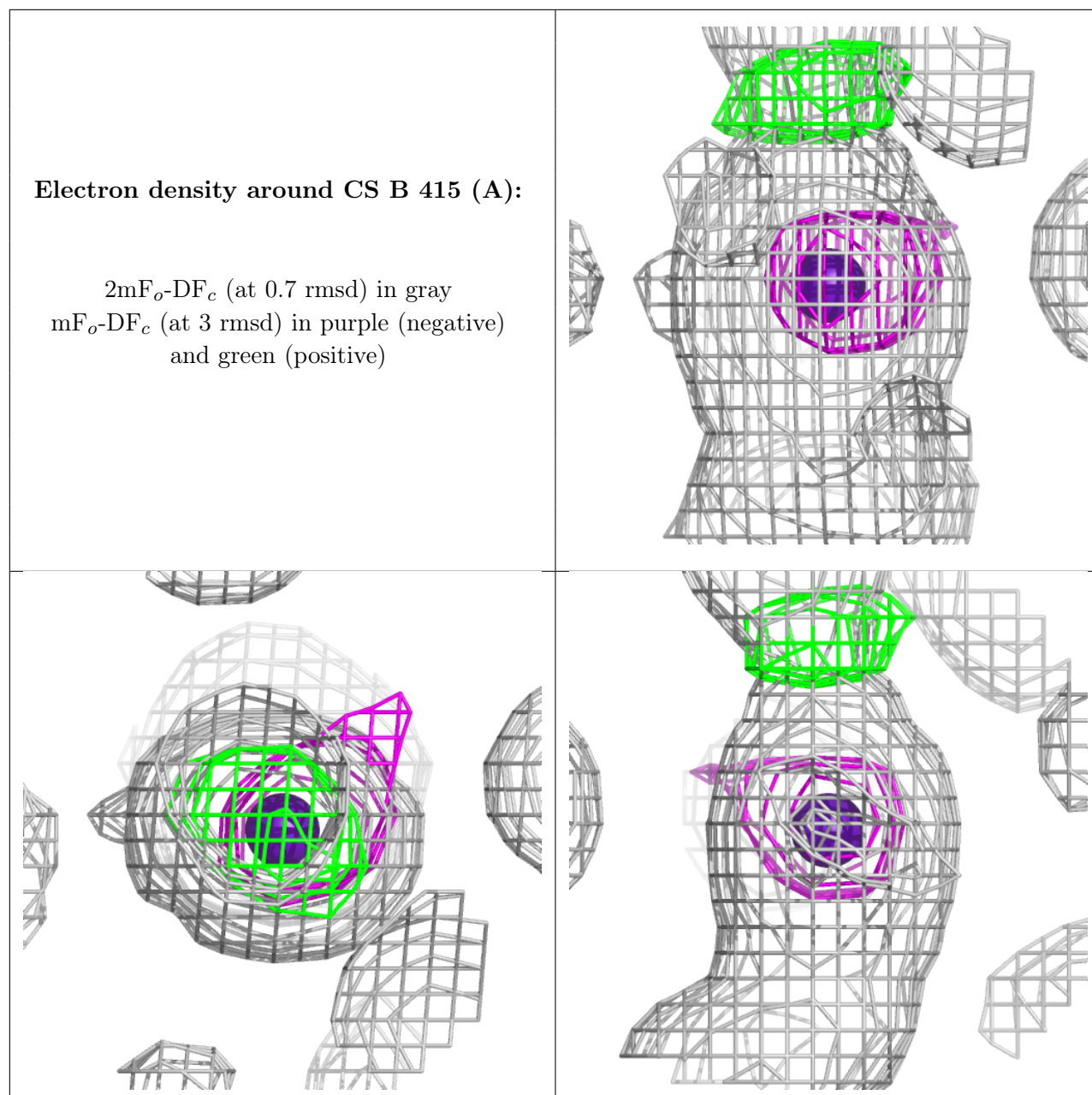
The following is a graphical depiction of the model fit to experimental electron density of all instances of the Ligand of Interest. In addition, ligands with molecular weight > 250 and outliers as shown on the geometry validation Tables will also be included. Each fit is shown from different orientation to approximate a three-dimensional view.



Electron density around 0JO B 402:

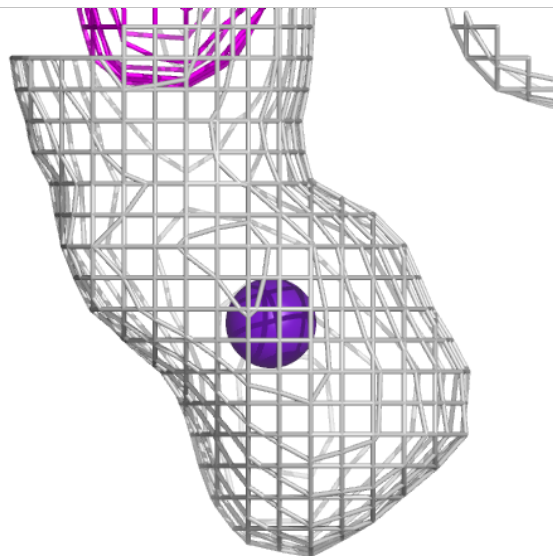
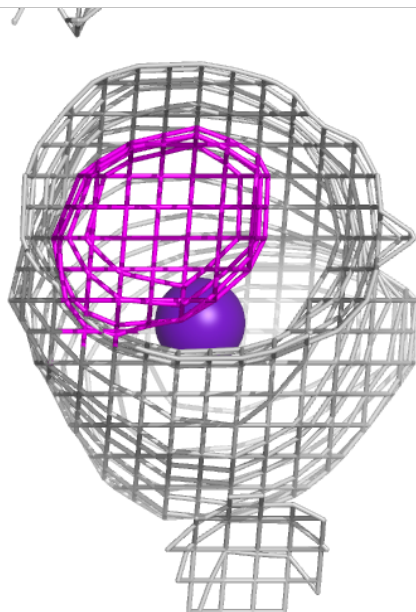
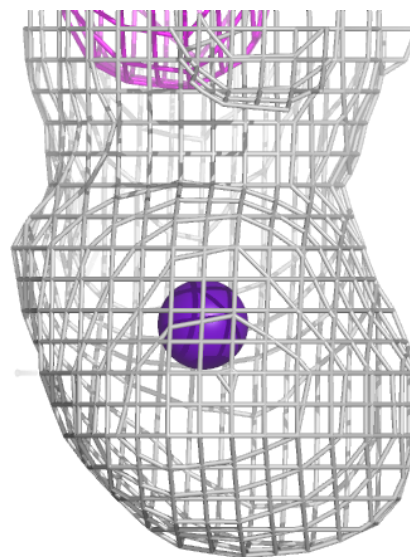
$2mF_o-DF_c$ (at 0.7 rmsd) in gray
 mF_o-DF_c (at 3 rmsd) in purple (negative)
and green (positive)





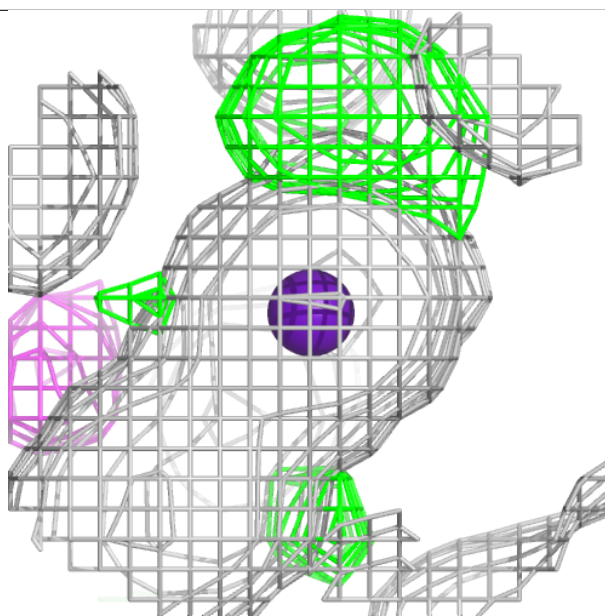
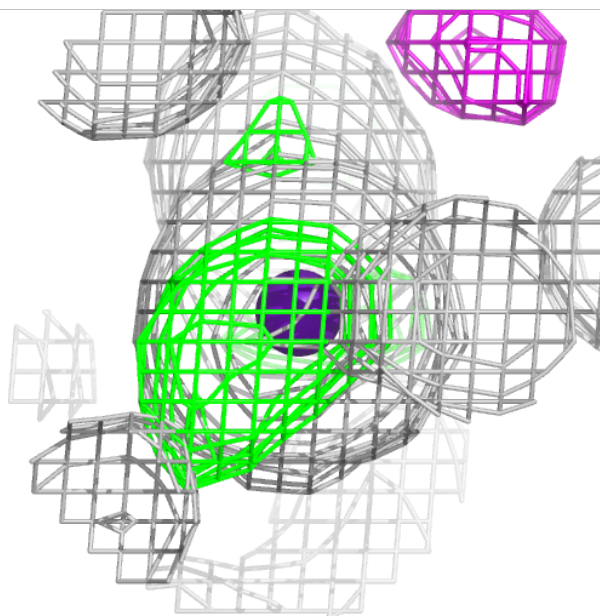
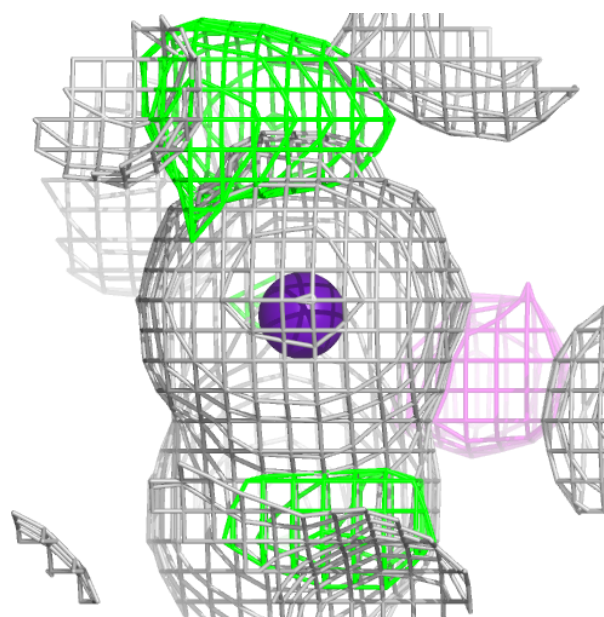
Electron density around CS B 415 (B):

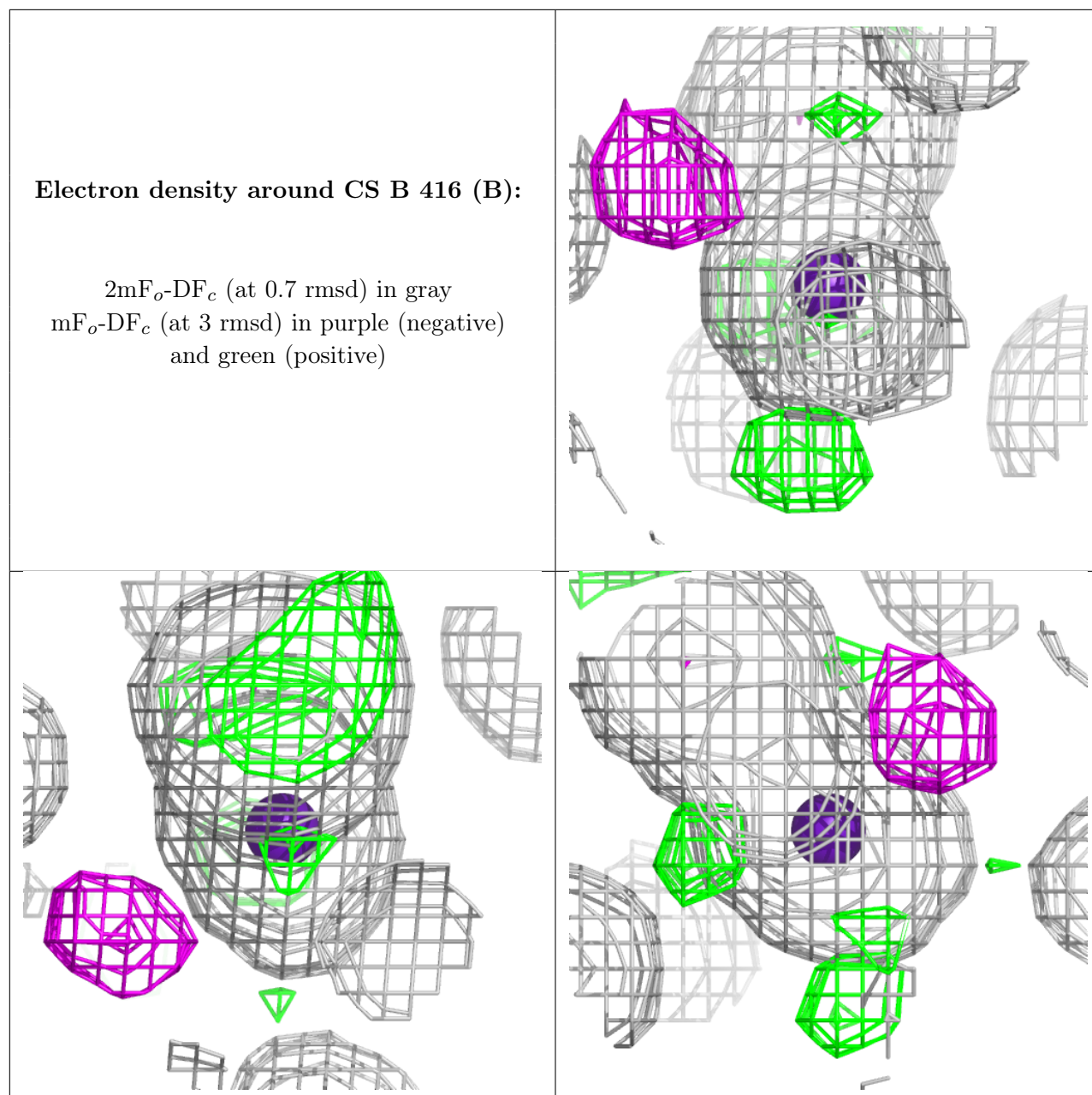
$2mF_o-DF_c$ (at 0.7 rmsd) in gray
 mF_o-DF_c (at 3 rmsd) in purple (negative)
and green (positive)



Electron density around CS B 416 (A):

$2mF_o-DF_c$ (at 0.7 rmsd) in gray
 mF_o-DF_c (at 3 rmsd) in purple (negative)
and green (positive)





6.5 Other polymers [i](#)

There are no such residues in this entry.