



Full wwPDB X-ray Structure Validation Report ⓘ

Oct 31, 2023 – 07:00 PM EDT

PDB ID : 3L2W
Title : Crystal structure of the Prototype Foamy Virus (PFV) intasome in complex with manganese and GS9137 (Elvitegravir)
Authors : Hare, S.; Gupta, S.S.; Cherepanov, P.
Deposited on : 2009-12-15
Resolution : 3.20 Å (reported)

This is a Full wwPDB X-ray Structure Validation Report for a publicly released PDB entry.

We welcome your comments at validation@mail.wwpdb.org

A user guide is available at

<https://www.wwpdb.org/validation/2017/XrayValidationReportHelp>

with specific help available everywhere you see the ⓘ symbol.

The types of validation reports are described at

<http://www.wwpdb.org/validation/2017/FAQs#types>.

The following versions of software and data (see [references ⓘ](#)) were used in the production of this report:

MolProbity : 4.02b-467
Mogul : 1.8.5 (274361), CSD as541be (2020)
Xtriage (Phenix) : 1.13
EDS : 2.36
buster-report : 1.1.7 (2018)
Percentile statistics : 20191225.v01 (using entries in the PDB archive December 25th 2019)
Refmac : 5.8.0158
CCP4 : 7.0.044 (Gargrove)
Ideal geometry (proteins) : Engh & Huber (2001)
Ideal geometry (DNA, RNA) : Parkinson et al. (1996)
Validation Pipeline (wwPDB-VP) : 2.36

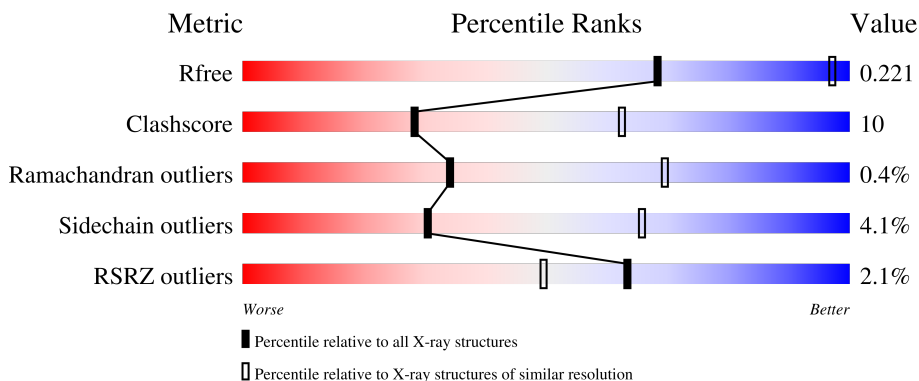
1 Overall quality at a glance i

The following experimental techniques were used to determine the structure:

X-RAY DIFFRACTION

The reported resolution of this entry is 3.20 Å.

Percentile scores (ranging between 0-100) for global validation metrics of the entry are shown in the following graphic. The table shows the number of entries on which the scores are based.



Metric	Whole archive (#Entries)	Similar resolution (#Entries, resolution range(Å))
R_{free}	130704	1133 (3.20-3.20)
Clashscore	141614	1253 (3.20-3.20)
Ramachandran outliers	138981	1234 (3.20-3.20)
Sidechain outliers	138945	1233 (3.20-3.20)
RSRZ outliers	127900	1095 (3.20-3.20)

The table below summarises the geometric issues observed across the polymeric chains and their fit to the electron density. The red, orange, yellow and green segments of the lower bar indicate the fraction of residues that contain outliers for ≥ 3 , 2, 1 and 0 types of geometric quality criteria respectively. A grey segment represents the fraction of residues that are not modelled. The numeric value for each fraction is indicated below the corresponding segment, with a dot representing fractions $\leq 5\%$. The upper red bar (where present) indicates the fraction of residues that have poor fit to the electron density. The numeric value is given above the bar.

Mol	Chain	Length	Quality of chain
1	A	395	<div style="display: flex; align-items: center;"> <div style="width: 5%; height: 10px; background-color: red; margin-right: 5px;"></div> <div style="width: 71%; height: 10px; background-color: green; margin-right: 5px;"></div> <div style="width: 20%; height: 10px; background-color: yellow; margin-right: 5px;"></div> <div style="width: 8%; height: 10px; background-color: orange; margin-right: 5px;"></div> <div style="width: 1%; height: 10px; background-color: grey;"></div> </div> <p style="margin-left: 5px;">71% 20% • 8%</p>
1	B	395	<div style="display: flex; align-items: center;"> <div style="width: 2%; height: 10px; background-color: red; margin-right: 5px;"></div> <div style="width: 36%; height: 10px; background-color: green; margin-right: 5px;"></div> <div style="width: 5%; height: 10px; background-color: yellow; margin-right: 5px;"></div> <div style="width: 59%; height: 10px; background-color: grey;"></div> </div> <p style="margin-left: 5px;">36% 5% 59%</p>
2	C	19	<div style="display: flex; align-items: center;"> <div style="width: 5%; height: 10px; background-color: red; margin-right: 5px;"></div> <div style="width: 53%; height: 10px; background-color: green; margin-right: 5px;"></div> <div style="width: 21%; height: 10px; background-color: yellow; margin-right: 5px;"></div> <div style="width: 26%; height: 10px; background-color: orange;"></div> </div> <p style="margin-left: 5px;">53% 21% 26%</p>
3	D	17	<div style="display: flex; align-items: center;"> <div style="width: 53%; height: 10px; background-color: green; margin-right: 5px;"></div> <div style="width: 35%; height: 10px; background-color: yellow; margin-right: 5px;"></div> <div style="width: 12%; height: 10px; background-color: orange;"></div> </div> <p style="margin-left: 5px;">53% 35% 12%</p>

The following table lists non-polymeric compounds, carbohydrate monomers and non-standard

residues in protein, DNA, RNA chains that are outliers for geometric or electron-density-fit criteria:

Mol	Type	Chain	Res	Chirality	Geometry	Clashes	Electron density
6	NH4	A	396	-	-	-	X
7	ELV	A	397	-	-	X	-
8	GOL	A	801	-	-	X	-
8	GOL	A	802	-	-	-	X

2 Entry composition

There are 8 unique types of molecules in this entry. The entry contains 4943 atoms, of which 0 are hydrogens and 0 are deuteriums.

In the tables below, the ZeroOcc column contains the number of atoms modelled with zero occupancy, the AltConf column contains the number of residues with at least one atom in alternate conformation and the Trace column contains the number of residues modelled with at most 2 atoms.

- Molecule 1 is a protein called Integrase.

Mol	Chain	Residues	Atoms					ZeroOcc	AltConf	Trace
			Total	C	N	O	S			
1	A	365	Total	C	N	O	S	0	0	0
			2886	1852	506	524	4			
1	B	163	Total	C	N	O	S	0	0	0
			1265	830	202	232	1			

There are 10 discrepancies between the modelled and reference sequences:

Chain	Residue	Modelled	Actual	Comment	Reference
A	-2	GLY	-	EXPRESSION TAG	UNP P14350
A	-1	PRO	-	EXPRESSION TAG	UNP P14350
A	0	GLY	-	EXPRESSION TAG	UNP P14350
A	217	SER	GLY	VARIANT	UNP P14350
A	218	GLY	SER	VARIANT	UNP P14350
B	-2	GLY	-	EXPRESSION TAG	UNP P14350
B	-1	PRO	-	EXPRESSION TAG	UNP P14350
B	0	GLY	-	EXPRESSION TAG	UNP P14350
B	217	SER	GLY	VARIANT	UNP P14350
B	218	GLY	SER	VARIANT	UNP P14350

- Molecule 2 is a DNA chain called 5'-D(*AP*TP*TP*GP*TP*CP*AP*TP*GP*GP*AP*A P*TP*TP*TP*TP*GP*TP*A)-3'.

Mol	Chain	Residues	Atoms					ZeroOcc	AltConf	Trace
			Total	C	N	O	P			
2	C	19	Total	C	N	O	P	0	0	0
			389	189	66	116	18			

- Molecule 3 is a DNA chain called 5'-D(*TP*AP*CP*AP*AP*AP*AP*TP*TP*CP*CP*AP *TP*GP*AP*CP*A)-3'.

Mol	Chain	Residues	Atoms					ZeroOcc	AltConf	Trace
			Total	C	N	O	P			
3	D	17	Total	C	N	O	P	0	0	0
			343	166	65	96	16			

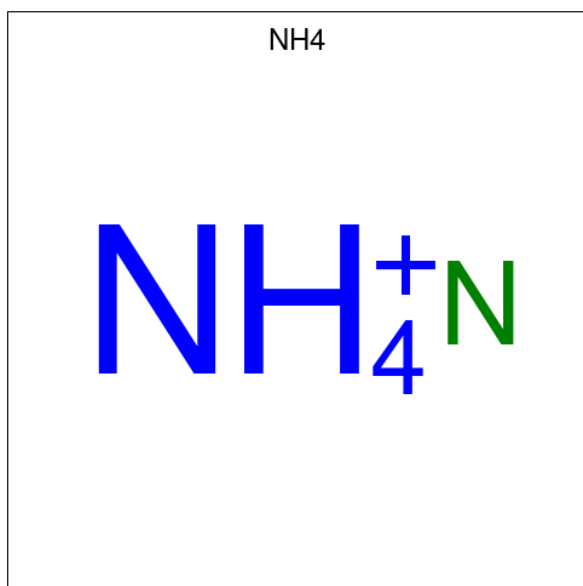
- Molecule 4 is ZINC ION (three-letter code: ZN) (formula: Zn).

Mol	Chain	Residues	Atoms	ZeroOcc	AltConf
4	A	1	Total Zn 1 1	0	0

- Molecule 5 is MANGANESE (II) ION (three-letter code: MN) (formula: Mn).

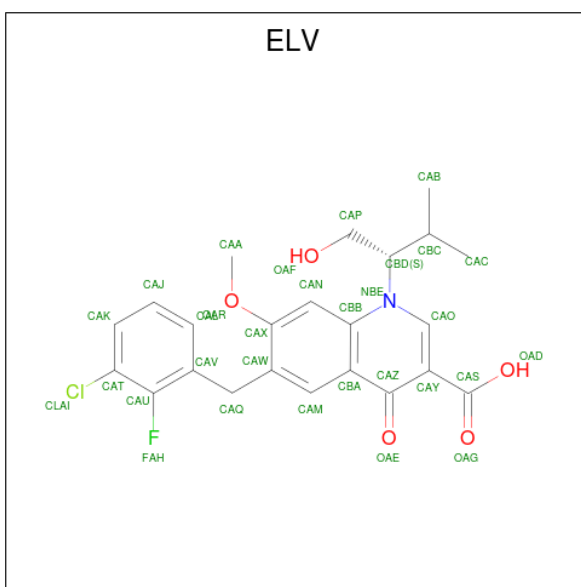
Mol	Chain	Residues	Atoms	ZeroOcc	AltConf
5	A	2	Total Mn 2 2	0	0
5	B	1	Total Mn 1 1	0	0

- Molecule 6 is AMMONIUM ION (three-letter code: NH4) (formula: H₄N).



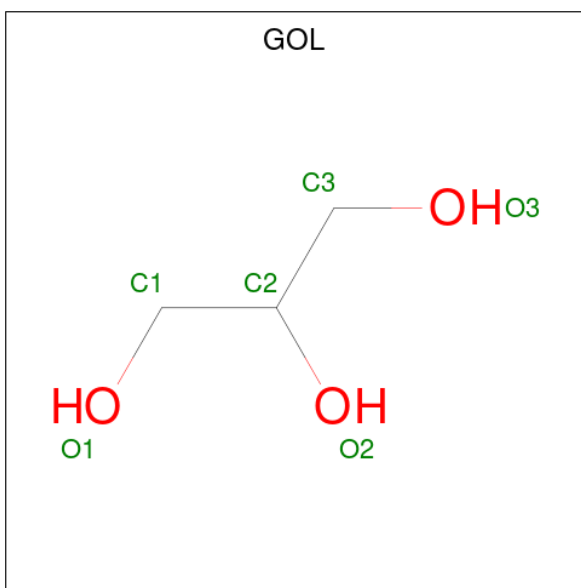
Mol	Chain	Residues	Atoms	ZeroOcc	AltConf
6	A	1	Total N 1 1	0	0

- Molecule 7 is 6-(3-chloro-2-fluorobenzyl)-1-[(1S)-1-(hydroxymethyl)-2-methylpropyl]-7-methoxy-4-oxo-1,4-dihydroquinoline-3-carboxylic acid (three-letter code: ELV) (formula: C₂₃H₂₃ClFNO₅).



Mol	Chain	Residues	Atoms					ZeroOcc	AltConf	
			Total	C	Cl	F	N			O
7	A	1	31	23	1	1	1	5	0	0

- Molecule 8 is GLYCEROL (three-letter code: GOL) (formula: $C_3H_8O_3$).

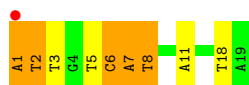


Mol	Chain	Residues	Atoms			ZeroOcc	AltConf
			Total	C	O		
8	A	1	6	3	3	0	0
8	A	1	6	3	3	0	0
8	A	1	6	3	3	0	0

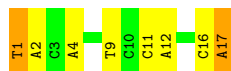
Continued on next page...

Continued from previous page...

Mol	Chain	Residues	Atoms			ZeroOcc	AltConf
			Total	C	O		
8	A	1	6	3	3	0	0



● Molecule 3: 5'-D(*TP*AP*CP*AP*AP*AP*AP*TP*TP*CP*CP*AP*TP*GP*AP*CP*A)-3
,



4 Data and refinement statistics

Property	Value	Source
Space group	P 41 21 2	Depositor
Cell constants a, b, c, α , β , γ	157.88Å 157.88Å 125.09Å 90.00° 90.00° 90.00°	Depositor
Resolution (Å)	35.90 – 3.20 35.90 – 3.20	Depositor EDS
% Data completeness (in resolution range)	98.8 (35.90-3.20) 98.9 (35.90-3.20)	Depositor EDS
R_{merge}	(Not available)	Depositor
R_{sym}	0.10	Depositor
$\langle I/\sigma(I) \rangle$ ¹	1.76 (at 3.18Å)	Xtrriage
Refinement program	REFMAC	Depositor
R, R_{free}	0.194 , 0.220 0.200 , 0.221	Depositor DCC
R_{free} test set	1341 reflections (5.10%)	wwPDB-VP
Wilson B-factor (Å ²)	118.3	Xtrriage
Anisotropy	0.061	Xtrriage
Bulk solvent k_{sol} (e/Å ³), B_{sol} (Å ²)	0.31 , 68.3	EDS
L-test for twinning ²	$\langle L \rangle = 0.48$, $\langle L^2 \rangle = 0.31$	Xtrriage
Estimated twinning fraction	No twinning to report.	Xtrriage
F_o, F_c correlation	0.95	EDS
Total number of atoms	4943	wwPDB-VP
Average B, all atoms (Å ²)	110.0	wwPDB-VP

Xtrriage's analysis on translational NCS is as follows: *The largest off-origin peak in the Patterson function is 3.94% of the height of the origin peak. No significant pseudotranslation is detected.*

¹Intensities estimated from amplitudes.

²Theoretical values of $\langle |L| \rangle$, $\langle L^2 \rangle$ for acentric reflections are 0.5, 0.333 respectively for untwinned datasets, and 0.375, 0.2 for perfectly twinned datasets.

5 Model quality i

5.1 Standard geometry i

Bond lengths and bond angles in the following residue types are not validated in this section: ZN, GOL, MN, ELV, NH4

The Z score for a bond length (or angle) is the number of standard deviations the observed value is removed from the expected value. A bond length (or angle) with $|Z| > 5$ is considered an outlier worth inspection. RMSZ is the root-mean-square of all Z scores of the bond lengths (or angles).

Mol	Chain	Bond lengths		Bond angles	
		RMSZ	# Z >5	RMSZ	# Z >5
1	A	0.45	0/2965	0.62	0/4051
1	B	0.47	0/1306	0.57	0/1793
2	C	0.90	0/435	1.79	13/671 (1.9%)
3	D	1.00	0/385	1.75	11/591 (1.9%)
All	All	0.57	0/5091	0.93	24/7106 (0.3%)

There are no bond length outliers.

All (24) bond angle outliers are listed below:

Mol	Chain	Res	Type	Atoms	Z	Observed(°)	Ideal(°)
3	D	1	DT	O4'-C1'-N1	13.47	117.43	108.00
2	C	1	DA	O4'-C1'-N9	8.78	114.15	108.00
2	C	7	DA	O4'-C1'-N9	-8.57	102.00	108.00
2	C	2	DT	P-O3'-C3'	8.47	129.86	119.70
2	C	6	DC	O4'-C1'-N1	-8.24	102.23	108.00
3	D	11	DC	O4'-C1'-N1	7.60	113.32	108.00
2	C	2	DT	O4'-C1'-N1	-6.81	103.23	108.00
2	C	1	DA	P-O3'-C3'	6.74	127.78	119.70
2	C	11	DA	P-O3'-C3'	6.66	127.69	119.70
2	C	2	DT	C4-C5-C7	6.46	122.88	119.00
3	D	1	DT	C1'-O4'-C4'	-6.26	103.84	110.10
3	D	9	DT	N3-C4-O4	6.22	123.63	119.90
3	D	1	DT	P-O3'-C3'	6.16	127.09	119.70
2	C	3	DT	O4'-C1'-N1	6.10	112.27	108.00
2	C	1	DA	C1'-O4'-C4'	-5.72	104.38	110.10
3	D	9	DT	C5-C4-O4	-5.43	121.10	124.90
2	C	18	DT	C1'-O4'-C4'	-5.40	104.70	110.10
2	C	2	DT	C6-C5-C7	-5.35	119.69	122.90
3	D	12	DA	O4'-C1'-N9	-5.29	104.30	108.00
2	C	8	DT	O4'-C1'-N1	-5.28	104.30	108.00

Continued on next page...

Continued from previous page...

Mol	Chain	Res	Type	Atoms	Z	Observed(°)	Ideal(°)
3	D	17	DA	O4'-C1'-N9	-5.24	104.33	108.00
3	D	11	DC	C1'-O4'-C4'	-5.13	104.97	110.10
3	D	1	DT	O4'-C1'-C2'	-5.11	101.81	105.90
3	D	4	DA	O4'-C1'-N9	-5.06	104.46	108.00

There are no chirality outliers.

There are no planarity outliers.

5.2 Too-close contacts [i](#)

In the following table, the Non-H and H(model) columns list the number of non-hydrogen atoms and hydrogen atoms in the chain respectively. The H(added) column lists the number of hydrogen atoms added and optimized by MolProbity. The Clashes column lists the number of clashes within the asymmetric unit, whereas Symm-Clashes lists symmetry-related clashes.

Mol	Chain	Non-H	H(model)	H(added)	Clashes	Symm-Clashes
1	A	2886	0	2905	65	0
1	B	1265	0	1238	15	0
2	C	389	0	220	5	0
3	D	343	0	193	8	0
4	A	1	0	0	0	0
5	A	2	0	0	0	0
5	B	1	0	0	0	0
6	A	1	0	0	0	0
7	A	31	0	22	15	0
8	A	24	0	32	7	0
All	All	4943	0	4610	94	0

The all-atom clashscore is defined as the number of clashes found per 1000 atoms (including hydrogen atoms). The all-atom clashscore for this structure is 10.

All (94) close contacts within the same asymmetric unit are listed below, sorted by their clash magnitude.

Atom-1	Atom-2	Interatomic distance (Å)	Clash overlap (Å)
7:A:397:ELV:HAL	7:A:397:ELV:HAM	1.26	1.18
7:A:397:ELV:HAM	7:A:397:ELV:CAL	1.67	1.15
2:C:1:DA:H1'	2:C:2:DT:OP1	1.61	1.00
7:A:397:ELV:HAJ	3:D:16:DC:H2'	1.47	0.97
1:A:357:HIS:HA	1:A:358:LEU:HB2	1.49	0.94
7:A:397:ELV:CAL	7:A:397:ELV:CAM	2.40	0.93

Continued on next page...

Continued from previous page...

Atom-1	Atom-2	Interatomic distance (Å)	Clash overlap (Å)
7:A:397:ELV:CAJ	3:D:16:DC:H2'	2.02	0.90
1:A:350:ARG:HA	1:A:366:ILE:HD11	1.65	0.77
7:A:397:ELV:HABA	7:A:397:ELV:HAN	1.67	0.77
1:A:241:LYS:HG2	8:A:801:GOL:H12	1.69	0.74
7:A:397:ELV:HAL	7:A:397:ELV:CAM	2.07	0.73
1:A:350:ARG:HA	1:A:366:ILE:CD1	2.19	0.72
1:A:349:PRO:O	1:A:366:ILE:HD11	1.93	0.69
1:A:210:THR:HG21	1:A:365:SER:HB2	1.77	0.67
1:A:26:LYS:O	1:A:27:GLN:HB3	1.96	0.66
7:A:397:ELV:HAJ	3:D:16:DC:C2'	2.24	0.66
3:D:17:DA:H5''	3:D:17:DA:H8	1.61	0.65
1:A:120:LYS:NZ	1:B:272:ILE:HD11	2.12	0.64
2:C:7:DA:H1'	2:C:8:DT:H5'	1.82	0.61
7:A:397:ELV:HAN	7:A:397:ELV:CAB	2.32	0.60
1:A:272:ILE:HD12	1:A:291:GLU:OE2	2.03	0.59
1:A:339:LYS:H	8:A:803:GOL:H32	1.67	0.58
1:B:231:LEU:O	1:B:235:LEU:HB2	2.02	0.58
1:A:292:LEU:HD22	1:B:271:GLY:HA3	1.86	0.57
1:A:212:TYR:HA	7:A:397:ELV:HACA	1.85	0.57
1:A:230:LEU:HD23	1:A:249:VAL:HG13	1.87	0.57
1:A:241:LYS:HG2	8:A:801:GOL:C1	2.33	0.57
1:A:46:LYS:HE2	1:A:77:ALA:O	2.05	0.56
1:A:337:TRP:CD2	1:A:370:LYS:HD3	2.40	0.56
1:A:272:ILE:CD1	1:B:120:LYS:HD2	2.36	0.56
3:D:17:DA:H5''	3:D:17:DA:C8	2.40	0.55
1:A:210:THR:HG23	1:A:211:PRO:HD2	1.89	0.55
1:B:141:TYR:CE2	1:B:161:PRO:HD3	2.42	0.54
1:A:210:THR:HG21	1:A:365:SER:N	2.24	0.53
1:A:157:PRO:HG3	1:A:246:LEU:HD12	1.91	0.52
1:A:241:LYS:CG	8:A:801:GOL:H12	2.37	0.52
1:A:145:VAL:HG11	1:A:173:LEU:HD21	1.89	0.52
1:A:357:HIS:H	1:A:357:HIS:CD2	2.27	0.52
1:B:127:ILE:HA	1:B:144:VAL:O	2.09	0.52
3:D:17:DA:H8	3:D:17:DA:C5'	2.23	0.51
1:A:86:ARG:O	1:A:90:VAL:HG23	2.11	0.50
1:A:122:PHE:O	1:A:179:PRO:HA	2.11	0.50
1:A:164:SER:H	8:A:804:GOL:HO2	1.59	0.50
1:A:26:LYS:O	1:A:27:GLN:CB	2.60	0.50
7:A:397:ELV:HAQA	7:A:397:ELV:HAAA	1.93	0.49
1:A:357:HIS:HA	1:A:358:LEU:CB	2.30	0.49
1:A:219:LYS:HE3	2:C:6:DC:OP1	2.13	0.48

Continued on next page...

Continued from previous page...

Atom-1	Atom-2	Interatomic distance (Å)	Clash overlap (Å)
1:A:137:GLN:H	8:A:801:GOL:H2	1.79	0.48
1:A:108:ALA:O	1:A:314:SER:HA	2.14	0.48
7:A:397:ELV:HABA	7:A:397:ELV:CAN	2.40	0.48
1:B:212:TYR:O	1:B:214:PRO:HD3	2.14	0.47
1:A:344:LEU:HD11	1:A:355:LEU:HB2	1.96	0.47
1:A:339:LYS:H	8:A:803:GOL:C3	2.27	0.47
1:A:155:LEU:HD21	1:A:227:ILE:CD1	2.46	0.46
1:A:214:PRO:HG3	7:A:397:ELV:HACB	1.97	0.46
1:B:130:ILE:HD12	1:B:144:VAL:HG21	1.98	0.46
1:A:112:ILE:HA	1:A:350:ARG:CD	2.46	0.46
1:A:213:HIS:CE1	1:A:215:GLN:HB2	2.51	0.46
1:A:281:GLN:O	1:A:284:LEU:HB2	2.17	0.45
1:A:328:ALA:O	1:A:330:PRO:HD3	2.16	0.45
7:A:397:ELV:HAN	7:A:397:ELV:HAP	1.98	0.45
1:A:14:GLN:O	1:A:17:GLN:HB2	2.17	0.45
1:A:337:TRP:CE2	1:A:370:LYS:HD3	2.51	0.45
1:A:112:ILE:HA	1:A:350:ARG:HD2	1.99	0.45
1:B:272:ILE:HD12	1:B:272:ILE:HA	1.86	0.45
1:A:348:ASN:HB2	1:A:349:PRO:CD	2.47	0.44
1:A:73:LEU:HD22	1:A:86:ARG:CZ	2.47	0.44
1:A:115:PRO:HD2	2:C:5:DT:P	2.57	0.44
1:A:323:VAL:HG13	1:A:369:LEU:HD22	2.00	0.43
1:A:315:TRP:CZ2	1:A:366:ILE:HG23	2.54	0.43
1:A:122:PHE:CE2	1:A:177:ALA:HB3	2.53	0.43
1:B:158:THR:HB	1:B:165:ALA:HB1	2.01	0.43
1:A:348:ASN:HB2	1:A:349:PRO:HD3	2.01	0.42
1:A:67:THR:HB	1:A:71:ALA:HB3	2.01	0.42
1:A:217:SER:O	1:A:220:VAL:HG12	2.19	0.42
3:D:1:DT:H1'	3:D:2:DA:O5'	2.18	0.42
1:A:274:SER:HB2	1:B:178:ILE:H	1.84	0.42
1:A:358:LEU:HA	1:A:359:GLY:HA2	1.61	0.42
1:B:120:LYS:HB3	1:B:121:PRO:HD2	2.02	0.42
1:A:318:VAL:O	1:A:321:GLN:HB2	2.20	0.42
1:A:39:VAL:HB	1:A:48:ILE:HD11	2.01	0.42
1:A:49:PRO:HA	1:A:50:PRO:HD3	1.95	0.42
7:A:397:ELV:CAL	3:D:16:DC:H2'	2.46	0.42
1:A:304:HIS:HA	1:A:305:PRO:HD2	1.84	0.41
1:A:66:HIS:HB3	1:A:99:CYS:SG	2.61	0.41
1:B:262:LYS:HA	1:B:262:LYS:HD3	1.83	0.41
1:A:120:LYS:HZ1	1:B:272:ILE:HD11	1.85	0.41
1:A:233:LYS:O	1:A:236:VAL:HG23	2.21	0.40

Continued on next page...

Continued from previous page...

Atom-1	Atom-2	Interatomic distance (Å)	Clash overlap (Å)
1:A:272:ILE:HD13	1:B:120:LYS:HD2	2.02	0.40
1:A:350:ARG:HG2	1:A:366:ILE:HD12	2.03	0.40
1:A:90:VAL:HA	1:A:93:LEU:HD12	2.03	0.40
1:A:246:LEU:HB2	1:A:247:PRO:HD3	2.04	0.40
1:A:350:ARG:O	1:A:366:ILE:HG13	2.22	0.40
2:C:6:DC:H1'	2:C:7:DA:N7	2.36	0.40

There are no symmetry-related clashes.

5.3 Torsion angles [i](#)

5.3.1 Protein backbone [i](#)

In the following table, the Percentiles column shows the percent Ramachandran outliers of the chain as a percentile score with respect to all X-ray entries followed by that with respect to entries of similar resolution.

The Analysed column shows the number of residues for which the backbone conformation was analysed, and the total number of residues.

Mol	Chain	Analysed	Favoured	Allowed	Outliers	Percentiles	
1	A	363/395 (92%)	340 (94%)	21 (6%)	2 (1%)	25	64
1	B	161/395 (41%)	149 (92%)	12 (8%)	0	100	100
All	All	524/790 (66%)	489 (93%)	33 (6%)	2 (0%)	34	69

All (2) Ramachandran outliers are listed below:

Mol	Chain	Res	Type
1	A	27	GLN
1	A	328	ALA

5.3.2 Protein sidechains [i](#)

In the following table, the Percentiles column shows the percent sidechain outliers of the chain as a percentile score with respect to all X-ray entries followed by that with respect to entries of similar resolution.

The Analysed column shows the number of residues for which the sidechain conformation was analysed, and the total number of residues.

Mol	Chain	Analysed	Rotameric	Outliers	Percentiles	
1	A	322/354 (91%)	309 (96%)	13 (4%)	31	66
1	B	139/354 (39%)	133 (96%)	6 (4%)	29	64
All	All	461/708 (65%)	442 (96%)	19 (4%)	30	66

All (19) residues with a non-rotameric sidechain are listed below:

Mol	Chain	Res	Type
1	A	73	LEU
1	A	107	LYS
1	A	120	LYS
1	A	149	MET
1	A	164	SER
1	A	191	THR
1	A	276	THR
1	A	306	SER
1	A	323	VAL
1	A	341	SER
1	A	351	THR
1	A	364	VAL
1	A	370	LYS
1	B	119	GLN
1	B	216	SER
1	B	229	ARG
1	B	232	THR
1	B	238	ARG
1	B	272	ILE

Sometimes sidechains can be flipped to improve hydrogen bonding and reduce clashes. All (1) such sidechains are listed below:

Mol	Chain	Res	Type
1	A	357	HIS

5.3.3 RNA ⓘ

There are no RNA molecules in this entry.

5.4 Non-standard residues in protein, DNA, RNA chains ⓘ

There are no non-standard protein/DNA/RNA residues in this entry.

5.5 Carbohydrates [i](#)

There are no monosaccharides in this entry.

5.6 Ligand geometry [i](#)

Of 10 ligands modelled in this entry, 4 are monoatomic and 1 is modelled with single atom - leaving 5 for Mogul analysis.

In the following table, the Counts columns list the number of bonds (or angles) for which Mogul statistics could be retrieved, the number of bonds (or angles) that are observed in the model and the number of bonds (or angles) that are defined in the Chemical Component Dictionary. The Link column lists molecule types, if any, to which the group is linked. The Z score for a bond length (or angle) is the number of standard deviations the observed value is removed from the expected value. A bond length (or angle) with $|Z| > 2$ is considered an outlier worth inspection. RMSZ is the root-mean-square of all Z scores of the bond lengths (or angles).

Mol	Type	Chain	Res	Link	Bond lengths			Bond angles		
					Counts	RMSZ	# Z > 2	Counts	RMSZ	# Z > 2
8	GOL	A	801	-	5,5,5	0.43	0	5,5,5	0.34	0
8	GOL	A	803	-	5,5,5	0.43	0	5,5,5	0.82	0
8	GOL	A	802	-	5,5,5	0.49	0	5,5,5	0.65	0
8	GOL	A	804	-	5,5,5	0.43	0	5,5,5	0.55	0
7	ELV	A	397	5	33,33,33	1.65	7 (21%)	46,48,48	4.75	17 (36%)

In the following table, the Chirals column lists the number of chiral outliers, the number of chiral centers analysed, the number of these observed in the model and the number defined in the Chemical Component Dictionary. Similar counts are reported in the Torsion and Rings columns. '-' means no outliers of that kind were identified.

Mol	Type	Chain	Res	Link	Chirals	Torsions	Rings
8	GOL	A	801	-	-	4/4/4/4	-
8	GOL	A	803	-	-	2/4/4/4	-
8	GOL	A	802	-	-	0/4/4/4	-
8	GOL	A	804	-	-	4/4/4/4	-
7	ELV	A	397	5	-	10/20/20/20	0/3/3/3

All (7) bond length outliers are listed below:

Mol	Chain	Res	Type	Atoms	Z	Observed(Å)	Ideal(Å)
7	A	397	ELV	CAT-CAU	4.81	1.42	1.38
7	A	397	ELV	CBB-NBE	3.81	1.44	1.40
7	A	397	ELV	CAO-NBE	2.92	1.39	1.34

Continued on next page...

Continued from previous page...

Mol	Chain	Res	Type	Atoms	Z	Observed(Å)	Ideal(Å)
7	A	397	ELV	CBC-CBD	2.91	1.57	1.53
7	A	397	ELV	CBA-CAZ	-2.56	1.43	1.48
7	A	397	ELV	OAD-CAS	-2.08	1.24	1.30
7	A	397	ELV	CAY-CAS	2.01	1.52	1.48

All (17) bond angle outliers are listed below:

Mol	Chain	Res	Type	Atoms	Z	Observed(°)	Ideal(°)
7	A	397	ELV	CAU-CAT-CLAI	25.07	129.14	119.50
7	A	397	ELV	CAK-CAT-CAU	10.76	125.21	119.29
7	A	397	ELV	CAK-CAT-CLAI	-6.36	105.65	118.41
7	A	397	ELV	CAQ-CAV-CAL	-6.00	110.61	120.46
7	A	397	ELV	CAQ-CAV-CAU	5.15	130.37	121.00
7	A	397	ELV	CBB-NBE-CBD	5.09	125.25	119.89
7	A	397	ELV	CAW-CAQ-CAV	-4.89	99.17	112.67
7	A	397	ELV	FAH-CAU-CAT	4.86	125.09	119.20
7	A	397	ELV	CAL-CAV-CAU	3.56	119.02	116.43
7	A	397	ELV	CAY-CAO-NBE	-3.32	120.77	124.49
7	A	397	ELV	OAR-CAX-CAW	3.29	120.56	115.97
7	A	397	ELV	CAO-CAY-CAS	-3.07	113.26	118.35
7	A	397	ELV	CAS-CAY-CAZ	2.63	125.58	121.56
7	A	397	ELV	CBB-CAN-CAX	2.42	123.06	117.91
7	A	397	ELV	CBA-CAZ-CAY	2.38	118.62	115.59
7	A	397	ELV	CBD-NBE-CAO	-2.32	114.81	120.06
7	A	397	ELV	CAN-CAX-CAW	-2.00	118.33	120.48

There are no chirality outliers.

All (20) torsion outliers are listed below:

Mol	Chain	Res	Type	Atoms
7	A	397	ELV	OAF-CAP-CBD-CBC
7	A	397	ELV	CBC-CBD-NBE-CAO
8	A	801	GOL	O1-C1-C2-C3
8	A	803	GOL	O1-C1-C2-C3
8	A	804	GOL	O1-C1-C2-C3
8	A	804	GOL	C1-C2-C3-O3
7	A	397	ELV	CAW-CAX-OAR-CAA
7	A	397	ELV	CAN-CAX-OAR-CAA
8	A	801	GOL	C1-C2-C3-O3
8	A	801	GOL	O1-C1-C2-O2
8	A	801	GOL	O2-C2-C3-O3
8	A	803	GOL	O1-C1-C2-O2

Continued on next page...

Continued from previous page...

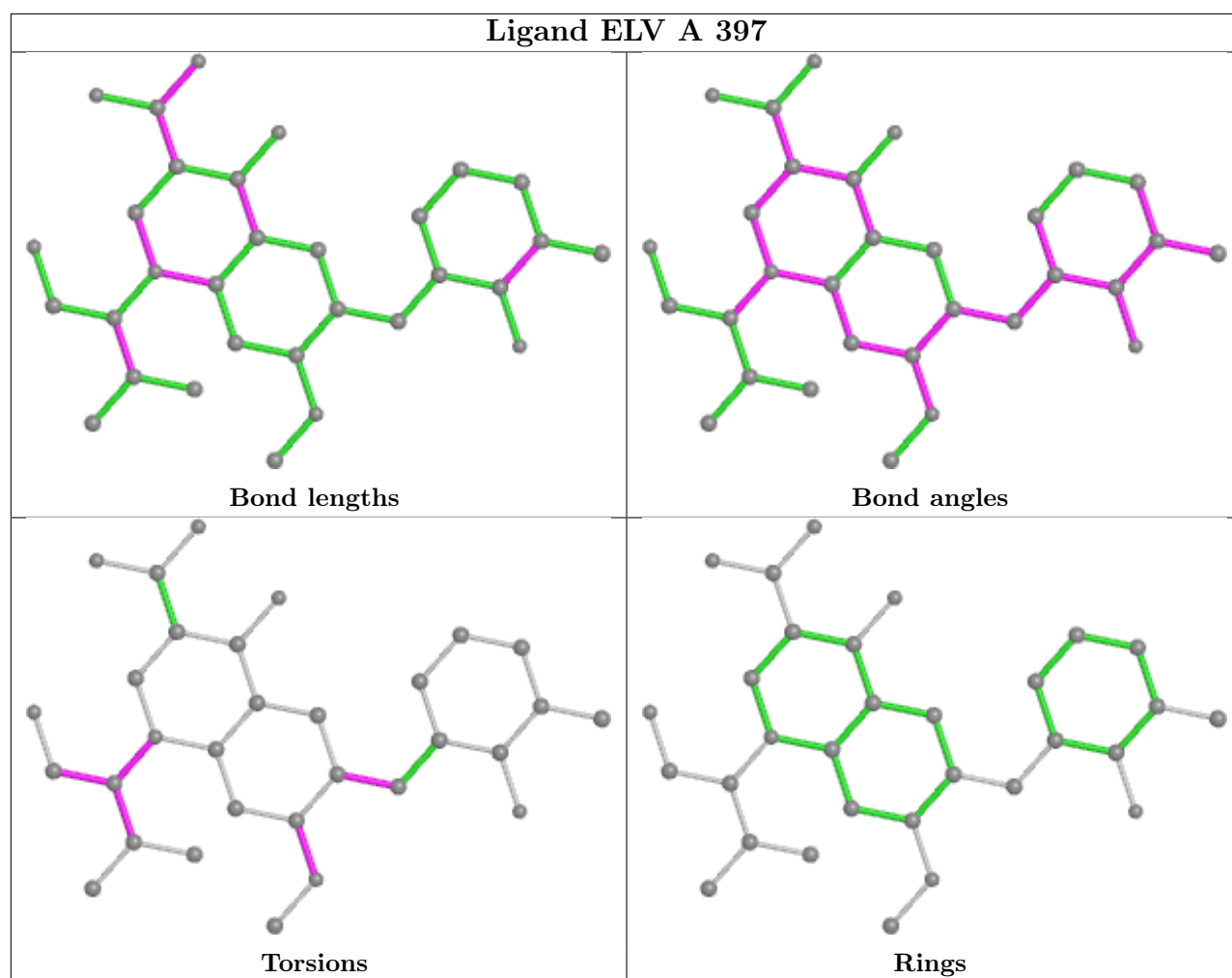
Mol	Chain	Res	Type	Atoms
8	A	804	GOL	O1-C1-C2-O2
7	A	397	ELV	OAF-CAP-CBD-NBE
7	A	397	ELV	CAB-CBC-CBD-CAP
7	A	397	ELV	CAB-CBC-CBD-NBE
7	A	397	ELV	CAC-CBC-CBD-NBE
8	A	804	GOL	O2-C2-C3-O3
7	A	397	ELV	CAP-CBD-NBE-CAO
7	A	397	ELV	CAV-CAQ-CAW-CAX

There are no ring outliers.

4 monomers are involved in 22 short contacts:

Mol	Chain	Res	Type	Clashes	Symm-Clashes
8	A	801	GOL	4	0
8	A	803	GOL	2	0
8	A	804	GOL	1	0
7	A	397	ELV	15	0

The following is a two-dimensional graphical depiction of Mogul quality analysis of bond lengths, bond angles, torsion angles, and ring geometry for all instances of the Ligand of Interest. In addition, ligands with molecular weight > 250 and outliers as shown on the validation Tables will also be included. For torsion angles, if less than 5% of the Mogul distribution of torsion angles is within 10 degrees of the torsion angle in question, then that torsion angle is considered an outlier. Any bond that is central to one or more torsion angles identified as an outlier by Mogul will be highlighted in the graph. For rings, the root-mean-square deviation (RMSD) between the ring in question and similar rings identified by Mogul is calculated over all ring torsion angles. If the average RMSD is greater than 60 degrees and the minimal RMSD between the ring in question and any Mogul-identified rings is also greater than 60 degrees, then that ring is considered an outlier. The outliers are highlighted in purple. The color gray indicates Mogul did not find sufficient equivalents in the CSD to analyse the geometry.



5.7 Other polymers [i](#)

There are no such residues in this entry.

5.8 Polymer linkage issues [i](#)

There are no chain breaks in this entry.

6 Fit of model and data [i](#)

6.1 Protein, DNA and RNA chains [i](#)

In the following table, the column labelled ‘#RSRZ > 2’ contains the number (and percentage) of RSRZ outliers, followed by percent RSRZ outliers for the chain as percentile scores relative to all X-ray entries and entries of similar resolution. The OWAB column contains the minimum, median, 95th percentile and maximum values of the occupancy-weighted average B-factor per residue. The column labelled ‘Q < 0.9’ lists the number of (and percentage) of residues with an average occupancy less than 0.9.

Mol	Chain	Analysed	<RSRZ>	#RSRZ>2	OWAB(Å ²)	Q<0.9
1	A	365/395 (92%)	0.09	5 (1%) 75 63	84, 103, 154, 173	0
1	B	163/395 (41%)	0.12	6 (3%) 41 26	91, 112, 150, 167	0
2	C	19/19 (100%)	-0.03	1 (5%) 26 14	85, 103, 138, 159	0
3	D	17/17 (100%)	-0.23	0 100 100	89, 97, 139, 169	0
All	All	564/826 (68%)	0.09	12 (2%) 63 49	84, 105, 151, 173	0

All (12) RSRZ outliers are listed below:

Mol	Chain	Res	Type	RSRZ
1	A	254	ASN	3.9
1	B	175	SER	2.8
1	B	237	GLY	2.7
1	B	239	PRO	2.7
2	C	1	DA	2.4
1	A	153	THR	2.4
1	B	116	ASP	2.3
1	A	250	GLN	2.2
1	B	263	TYR	2.2
1	A	21	ILE	2.1
1	A	20	TYR	2.0
1	B	212	TYR	2.0

6.2 Non-standard residues in protein, DNA, RNA chains [i](#)

There are no non-standard protein/DNA/RNA residues in this entry.

6.3 Carbohydrates [i](#)

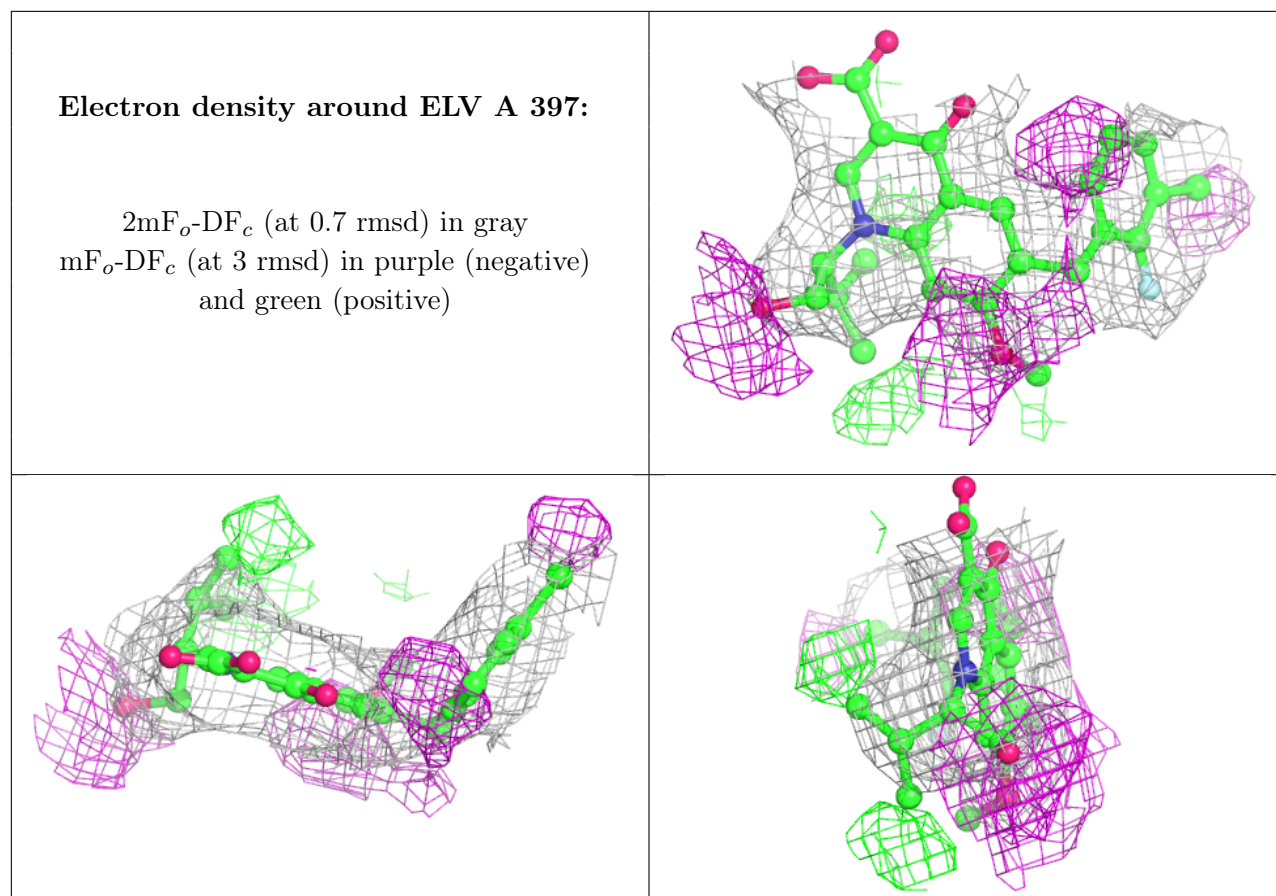
There are no monosaccharides in this entry.

6.4 Ligands

In the following table, the Atoms column lists the number of modelled atoms in the group and the number defined in the chemical component dictionary. The B-factors column lists the minimum, median, 95th percentile and maximum values of B factors of atoms in the group. The column labelled 'Q< 0.9' lists the number of atoms with occupancy less than 0.9.

Mol	Type	Chain	Res	Atoms	RSCC	RSR	B-factors(Å ²)	Q<0.9
6	NH4	A	396	1/1	0.71	0.55	57,57,57,57	0
8	GOL	A	802	6/6	0.71	0.80	113,115,117,117	0
8	GOL	A	804	6/6	0.85	0.20	138,138,139,139	0
8	GOL	A	803	6/6	0.91	0.15	125,126,127,127	0
8	GOL	A	801	6/6	0.91	0.22	105,108,109,109	0
7	ELV	A	397	31/31	0.96	0.23	71,77,84,91	0
5	MN	B	393	1/1	0.98	0.20	107,107,107,107	0
5	MN	A	394	1/1	0.99	0.18	84,84,84,84	0
5	MN	A	395	1/1	0.99	0.17	88,88,88,88	0
4	ZN	A	393	1/1	0.99	0.15	98,98,98,98	0

The following is a graphical depiction of the model fit to experimental electron density of all instances of the Ligand of Interest. In addition, ligands with molecular weight > 250 and outliers as shown on the geometry validation Tables will also be included. Each fit is shown from different orientation to approximate a three-dimensional view.



6.5 Other polymers [i](#)

There are no such residues in this entry.