



# Full wwPDB X-ray Structure Validation Report ⓘ

Mar 9, 2018 – 10:34 am GMT

PDB ID : 4L45  
Title : Crystal structures of human p70S6K1-T389E  
Authors : Wang, J.; Zhong, C.; Ding, J.  
Deposited on : 2013-06-07  
Resolution : 2.90 Å(reported)

This is a Full wwPDB X-ray Structure Validation Report for a publicly released PDB entry.

We welcome your comments at [validation@mail.wwpdb.org](mailto:validation@mail.wwpdb.org)

A user guide is available at

<https://www.wwpdb.org/validation/2017/XrayValidationReportHelp>

with specific help available everywhere you see the ⓘ symbol.

---

The following versions of software and data (see [references ⓘ](#)) were used in the production of this report:

MolProbity : 4.02b-467  
Mogul : 1.7.3 (157068), CSD as539be (2018)  
Xtrriage (Phenix) : 1.13  
EDS : trunk30967  
Percentile statistics : 20171227.v01 (using entries in the PDB archive December 27th 2017)  
Refmac : 5.8.0158  
CCP4 : 7.0 (Gargrove)  
Ideal geometry (proteins) : Engh & Huber (2001)  
Ideal geometry (DNA, RNA) : Parkinson et al. (1996)  
Validation Pipeline (wwPDB-VP) : trunk30967

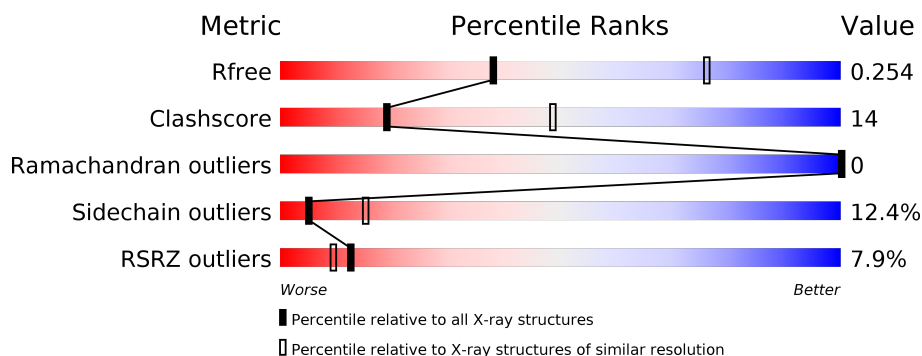
# 1 Overall quality at a glance

The following experimental techniques were used to determine the structure:

*X-RAY DIFFRACTION*

The reported resolution of this entry is 2.90 Å.

Percentile scores (ranging between 0-100) for global validation metrics of the entry are shown in the following graphic. The table shows the number of entries on which the scores are based.



Metric	Whole archive (#Entries)	Similar resolution (#Entries, resolution range(Å))
$R_{free}$	111664	1716 (2.90-2.90)
Clashscore	122126	1924 (2.90-2.90)
Ramachandran outliers	120053	1884 (2.90-2.90)
Sidechain outliers	120020	1886 (2.90-2.90)
RSRZ outliers	108989	1669 (2.90-2.90)

The table below summarises the geometric issues observed across the polymeric chains and their fit to the electron density. The red, orange, yellow and green segments on the lower bar indicate the fraction of residues that contain outliers for  $\geq 3$ , 2, 1 and 0 types of geometric quality criteria. A grey segment represents the fraction of residues that are not modelled. The numeric value for each fraction is indicated below the corresponding segment, with a dot representing fractions  $\leq 5\%$ . The upper red bar (where present) indicates the fraction of residues that have poor fit to the electron density. The numeric value is given above the bar.

Mol	Chain	Length	Quality of chain
1	A	346	

## 2 Entry composition i

There are 2 unique types of molecules in this entry. The entry contains 2556 atoms, of which 0 are hydrogens and 0 are deuteriums.

In the tables below, the ZeroOcc column contains the number of atoms modelled with zero occupancy, the AltConf column contains the number of residues with at least one atom in alternate conformation and the Trace column contains the number of residues modelled with at most 2 atoms.

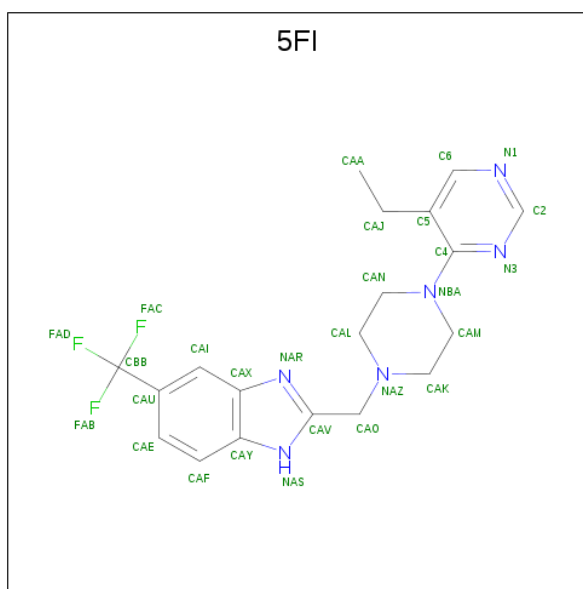
- Molecule 1 is a protein called RPS6KB1 protein.

Mol	Chain	Residues	Atoms					ZeroOcc	AltConf	Trace
			Total	C	N	O	S			
1	A	317	2528	1627	438	449	14	0	0	0

There are 4 discrepancies between the modelled and reference sequences:

Chain	Residue	Modelled	Actual	Comment	Reference
A	49	GLY	-	EXPRESSION TAG	UNP Q7Z721
A	50	ALA	-	EXPRESSION TAG	UNP Q7Z721
A	51	MET	-	EXPRESSION TAG	UNP Q7Z721
A	389	GLU	THR	ENGINEERED MUTATION	UNP Q7Z721

- Molecule 2 is 2-{{4-(5-ethylpyrimidin-4-yl)piperazin-1-yl}methyl}-5-(trifluoromethyl)-1H-benzimidazole (three-letter code: 5FI) (formula: C<sub>19</sub>H<sub>21</sub>F<sub>3</sub>N<sub>6</sub>).

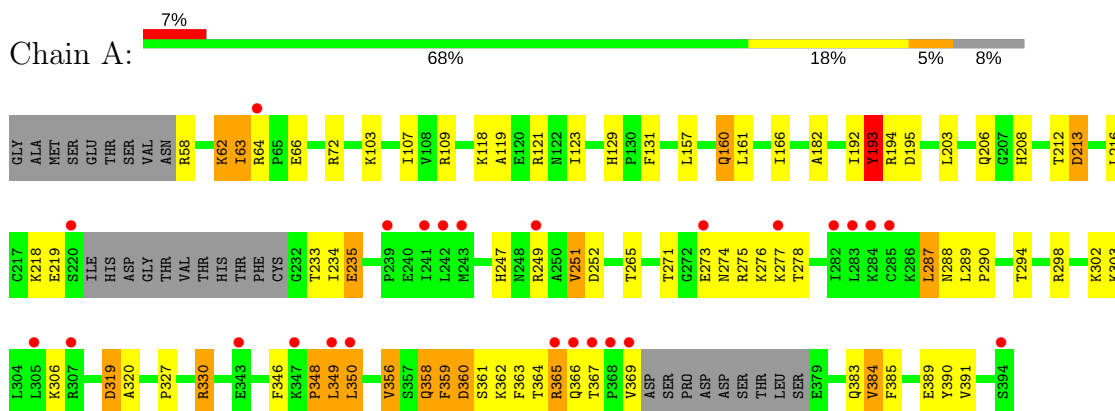


Mol	Chain	Residues	Atoms				ZeroOcc	AltConf
			Total	C	F	N		
2	A	1	28	19	3	6	0	0

### 3 Residue-property plots [i](#)

These plots are drawn for all protein, RNA and DNA chains in the entry. The first graphic for a chain summarises the proportions of the various outlier classes displayed in the second graphic. The second graphic shows the sequence view annotated by issues in geometry and electron density. Residues are color-coded according to the number of geometric quality criteria for which they contain at least one outlier: green = 0, yellow = 1, orange = 2 and red = 3 or more. A red dot above a residue indicates a poor fit to the electron density ( $RSRZ > 2$ ). Stretches of 2 or more consecutive residues without any outlier are shown as a green connector. Residues present in the sample, but not in the model, are shown in grey.

- Molecule 1: RPS6KB1 protein



## 4 Data and refinement statistics

Property	Value	Source
Space group	P 32 2 1	Depositor
Cell constants a, b, c, $\alpha$ , $\beta$ , $\gamma$	81.19Å 81.19Å 110.74Å 90.00° 90.00° 120.00°	Depositor
Resolution (Å)	43.54 – 2.90 43.50 – 2.90	Depositor EDS
% Data completeness (in resolution range)	99.8 (43.54-2.90) 99.9 (43.50-2.90)	Depositor EDS
$R_{merge}$	0.08	Depositor
$R_{sym}$	(Not available)	Depositor
$\langle I/\sigma(I) \rangle$ <sup>1</sup>	2.72 (at 2.90Å)	Xtrriage
Refinement program	REFMAC 5.7.0029	Depositor
R, $R_{free}$	0.232 , 0.286 0.254 , 0.254	Depositor DCC
$R_{free}$ test set	470 reflections (4.81%)	wwPDB-VP
Wilson B-factor (Å <sup>2</sup> )	85.3	Xtrriage
Anisotropy	0.296	Xtrriage
Bulk solvent $k_{sol}$ (e/Å <sup>3</sup> ), $B_{sol}$ (Å <sup>2</sup> )	0.35 , 69.8	EDS
L-test for twinning <sup>2</sup>	$\langle  L  \rangle = 0.51$ , $\langle L^2 \rangle = 0.35$	Xtrriage
Estimated twinning fraction	0.027 for -h,-k,l	Xtrriage
$F_o, F_c$ correlation	0.93	EDS
Total number of atoms	2556	wwPDB-VP
Average B, all atoms (Å <sup>2</sup> )	76.0	wwPDB-VP

Xtrriage's analysis on translational NCS is as follows: *The largest off-origin peak in the Patterson function is 4.72% of the height of the origin peak. No significant pseudotranslation is detected.*

<sup>1</sup>Intensities estimated from amplitudes.

<sup>2</sup>Theoretical values of  $\langle |L| \rangle$ ,  $\langle L^2 \rangle$  for acentric reflections are 0.5, 0.333 respectively for untwinned datasets, and 0.375, 0.2 for perfectly twinned datasets.

## 5 Model quality [i](#)

### 5.1 Standard geometry [i](#)

Bond lengths and bond angles in the following residue types are not validated in this section: 5FI

The Z score for a bond length (or angle) is the number of standard deviations the observed value is removed from the expected value. A bond length (or angle) with  $|Z| > 5$  is considered an outlier worth inspection. RMSZ is the root-mean-square of all Z scores of the bond lengths (or angles).

Mol	Chain	Bond lengths		Bond angles	
		RMSZ	# Z  >5	RMSZ	# Z  >5
1	A	0.30	0/2583	0.79	11/3475 (0.3%)

There are no bond length outliers.

All (11) bond angle outliers are listed below:

Mol	Chain	Res	Type	Atoms	Z	Observed(°)	Ideal(°)
1	A	212	THR	N-CA-C	15.76	153.55	111.00
1	A	365	ARG	N-CA-C	12.99	146.06	111.00
1	A	384	VAL	CB-CA-C	-9.93	92.54	111.40
1	A	212	THR	CB-CA-C	-9.29	86.52	111.60
1	A	193	TYR	N-CA-C	-8.73	87.43	111.00
1	A	213	ASP	N-CA-CB	-8.37	95.54	110.60
1	A	193	TYR	CB-CA-C	8.36	127.11	110.40
1	A	365	ARG	CB-CA-C	-8.07	94.26	110.40
1	A	348	PRO	CB-CA-C	-6.76	95.11	112.00
1	A	366	GLN	N-CA-C	5.92	126.99	111.00
1	A	63	ILE	N-CA-C	5.01	124.54	111.00

There are no chirality outliers.

There are no planarity outliers.

### 5.2 Too-close contacts [i](#)

In the following table, the Non-H and H(model) columns list the number of non-hydrogen atoms and hydrogen atoms in the chain respectively. The H(added) column lists the number of hydrogen atoms added and optimized by MolProbity. The Clashes column lists the number of clashes within the asymmetric unit, whereas Symm-Clashes lists symmetry related clashes.

Mol	Chain	Non-H	H(model)	H(added)	Clashes	Symm-Clashes
1	A	2528	0	2566	70	0
2	A	28	0	21	2	0
All	All	2556	0	2587	72	0

The all-atom clashscore is defined as the number of clashes found per 1000 atoms (including hydrogen atoms). The all-atom clashscore for this structure is 14.

All (72) close contacts within the same asymmetric unit are listed below, sorted by their clash magnitude.

Atom-1	Atom-2	Interatomic distance (Å)	Clash overlap (Å)
1:A:384:VAL:HG12	1:A:385:PHE:H	1.02	1.18
1:A:360:ASP:HB2	1:A:361:SER:HA	1.43	0.99
1:A:348:PRO:O	1:A:350:LEU:HD23	1.63	0.97
1:A:384:VAL:HG12	1:A:385:PHE:N	1.80	0.96
2:A:401:5FI:H19	2:A:401:5FI:H17	1.53	0.89
1:A:192:ILE:HG22	1:A:193:TYR:O	1.72	0.89
1:A:118:LYS:HE2	1:A:384:VAL:CG1	2.06	0.86
1:A:359:PHE:CD1	1:A:359:PHE:N	2.46	0.83
1:A:365:ARG:O	1:A:365:ARG:HG3	1.79	0.81
1:A:348:PRO:O	1:A:350:LEU:CD2	2.33	0.77
1:A:384:VAL:CG1	1:A:385:PHE:H	1.85	0.74
1:A:359:PHE:HD1	1:A:359:PHE:H	1.36	0.74
1:A:360:ASP:HB2	1:A:361:SER:CA	2.17	0.73
1:A:358:GLN:HG2	1:A:359:PHE:CE1	2.23	0.73
1:A:118:LYS:HE2	1:A:384:VAL:HG11	1.70	0.71
1:A:365:ARG:CG	1:A:365:ARG:O	2.39	0.71
1:A:118:LYS:CE	1:A:384:VAL:CG1	2.72	0.67
1:A:274:ASN:ND2	1:A:277:LYS:HD2	2.10	0.67
1:A:129:HIS:HD2	1:A:131:PHE:H	1.40	0.67
1:A:192:ILE:CG2	1:A:193:TYR:O	2.42	0.66
1:A:63:ILE:O	1:A:63:ILE:HG22	1.94	0.65
1:A:274:ASN:ND2	1:A:277:LYS:CD	2.60	0.65
1:A:118:LYS:CE	1:A:384:VAL:HG11	2.26	0.65
1:A:119:ALA:O	1:A:123:ILE:HG12	1.97	0.64
1:A:194:ARG:CG	1:A:194:ARG:HH11	2.12	0.63
1:A:72:ARG:HD2	1:A:356:VAL:HG11	1.80	0.62
1:A:274:ASN:HD21	1:A:277:LYS:HG3	1.65	0.61
1:A:327:PRO:O	1:A:330:ARG:HD2	2.04	0.57
1:A:194:ARG:HG2	1:A:194:ARG:HH11	1.69	0.57
1:A:359:PHE:HD1	1:A:359:PHE:N	1.89	0.57
1:A:72:ARG:HH12	1:A:364:THR:HG23	1.73	0.54
1:A:349:LEU:CD2	1:A:350:LEU:N	2.71	0.54

*Continued on next page...*

Continued from previous page...

Atom-1	Atom-2	Interatomic distance (Å)	Clash overlap (Å)
1:A:273:GLU:HB2	1:A:277:LYS:HD2	1.89	0.54
1:A:72:ARG:HD2	1:A:356:VAL:HG21	1.89	0.53
1:A:288:ASN:O	1:A:290:PRO:HD3	2.07	0.53
1:A:157:LEU:HD13	1:A:203:LEU:HD21	1.92	0.52
1:A:360:ASP:HA	1:A:362:LYS:N	2.25	0.52
1:A:193:TYR:O	1:A:252:ASP:OD1	2.27	0.51
1:A:194:ARG:CG	1:A:194:ARG:NH1	2.73	0.51
2:A:401:5FI:CAJ	2:A:401:5FI:H17	2.32	0.51
1:A:206:GLN:HG3	1:A:208:HIS:HD2	1.76	0.50
1:A:289:LEU:HD23	1:A:289:LEU:H	1.74	0.50
1:A:287:LEU:H	1:A:287:LEU:HD13	1.76	0.50
1:A:349:LEU:HD23	1:A:350:LEU:N	2.27	0.50
1:A:274:ASN:ND2	1:A:277:LYS:HG3	2.26	0.49
1:A:233:THR:HG22	1:A:235:GLU:HG2	1.94	0.49
1:A:103:LYS:O	1:A:107:ILE:HG12	2.13	0.48
1:A:303:LYS:HA	1:A:306:LYS:HE2	1.95	0.48
1:A:294:THR:O	1:A:298:ARG:HB2	2.14	0.48
1:A:121:ARG:NH2	1:A:390:TYR:HB2	2.29	0.47
1:A:62:LYS:CG	1:A:64:ARG:HG3	2.44	0.47
1:A:350:LEU:HD23	1:A:350:LEU:N	2.30	0.47
1:A:166:ILE:HD11	1:A:265:THR:C	2.36	0.46
1:A:129:HIS:CD2	1:A:131:PHE:H	2.27	0.46
1:A:273:GLU:OE2	1:A:277:LYS:HD3	2.16	0.45
1:A:274:ASN:ND2	1:A:277:LYS:CG	2.80	0.45
1:A:274:ASN:HD21	1:A:277:LYS:CG	2.29	0.45
1:A:160:GLN:HG2	1:A:346:PHE:CD2	2.51	0.44
1:A:349:LEU:HD22	1:A:350:LEU:N	2.33	0.44
1:A:274:ASN:HD21	1:A:277:LYS:HE3	1.82	0.44
1:A:192:ILE:HB	1:A:194:ARG:NH1	2.34	0.43
1:A:274:ASN:HD21	1:A:277:LYS:CD	2.30	0.43
1:A:349:LEU:C	1:A:349:LEU:CD2	2.86	0.43
1:A:349:LEU:HD23	1:A:350:LEU:H	1.83	0.42
1:A:319:ASP:HB3	1:A:320:ALA:H	1.67	0.42
1:A:107:ILE:HD12	1:A:216:LEU:HD11	2.01	0.42
1:A:271:THR:HA	1:A:278:THR:HG23	2.02	0.41
1:A:247:HIS:HB2	1:A:251:VAL:HG21	2.02	0.41
1:A:365:ARG:HD2	1:A:365:ARG:O	2.20	0.41
1:A:131:PHE:HB2	1:A:182:ALA:HB2	2.03	0.41
1:A:62:LYS:HG2	1:A:64:ARG:HG3	2.02	0.40
1:A:62:LYS:HG3	1:A:64:ARG:HG3	2.03	0.40

There are no symmetry-related clashes.



## 5.3 Torsion angles [i](#)

### 5.3.1 Protein backbone [i](#)

In the following table, the Percentiles column shows the percent Ramachandran outliers of the chain as a percentile score with respect to all X-ray entries followed by that with respect to entries of similar resolution.

The Analysed column shows the number of residues for which the backbone conformation was analysed, and the total number of residues.

Mol	Chain	Analysed	Favoured	Allowed	Outliers	Percentiles
1	A	311/346 (90%)	295 (95%)	16 (5%)	0	100 100

There are no Ramachandran outliers to report.

### 5.3.2 Protein sidechains [i](#)

In the following table, the Percentiles column shows the percent sidechain outliers of the chain as a percentile score with respect to all X-ray entries followed by that with respect to entries of similar resolution.

The Analysed column shows the number of residues for which the sidechain conformation was analysed, and the total number of residues.

Mol	Chain	Analysed	Rotameric	Outliers	Percentiles
1	A	267/294 (91%)	234 (88%)	33 (12%)	5 15

All (33) residues with a non-rotameric sidechain are listed below:

Mol	Chain	Res	Type
1	A	58	ARG
1	A	62	LYS
1	A	66	GLU
1	A	109	ARG
1	A	160	GLN
1	A	161	LEU
1	A	193	TYR
1	A	195	ASP
1	A	213	ASP
1	A	218	LYS
1	A	219	GLU
1	A	234	ILE
1	A	235	GLU

*Continued on next page...*

*Continued from previous page...*

Mol	Chain	Res	Type
1	A	249	ARG
1	A	251	VAL
1	A	275	ARG
1	A	276	LYS
1	A	287	LEU
1	A	302	LYS
1	A	319	ASP
1	A	330	ARG
1	A	349	LEU
1	A	350	LEU
1	A	356	VAL
1	A	358	GLN
1	A	359	PHE
1	A	360	ASP
1	A	363	PHE
1	A	367	THR
1	A	369	VAL
1	A	383	GLN
1	A	389	GLU
1	A	391	VAL

Some sidechains can be flipped to improve hydrogen bonding and reduce clashes. All (2) such sidechains are listed below:

Mol	Chain	Res	Type
1	A	129	HIS
1	A	274	ASN

### 5.3.3 RNA [i](#)

There are no RNA molecules in this entry.

### 5.4 Non-standard residues in protein, DNA, RNA chains [i](#)

There are no non-standard protein/DNA/RNA residues in this entry.

### 5.5 Carbohydrates [i](#)

There are no carbohydrates in this entry.

## 5.6 Ligand geometry [i](#)

1 ligand is modelled in this entry.

In the following table, the Counts columns list the number of bonds (or angles) for which Mogul statistics could be retrieved, the number of bonds (or angles) that are observed in the model and the number of bonds (or angles) that are defined in the Chemical Component Dictionary. The Link column lists molecule types, if any, to which the group is linked. The Z score for a bond length (or angle) is the number of standard deviations the observed value is removed from the expected value. A bond length (or angle) with  $|Z| > 2$  is considered an outlier worth inspection. RMSZ is the root-mean-square of all Z scores of the bond lengths (or angles).

Mol	Type	Chain	Res	Link	Bond lengths			Bond angles		
					Counts	RMSZ	# Z  > 2	Counts	RMSZ	# Z  > 2
2	5FI	A	401	-	28,31,31	1.03	0	33,45,45	2.06	7 (21%)

In the following table, the Chirals column lists the number of chiral outliers, the number of chiral centers analysed, the number of these observed in the model and the number defined in the Chemical Component Dictionary. Similar counts are reported in the Torsion and Rings columns. '-' means no outliers of that kind were identified.

Mol	Type	Chain	Res	Link	Chirals	Torsions	Rings
2	5FI	A	401	-	-	0/16/26/26	0/4/4/4

There are no bond length outliers.

All (7) bond angle outliers are listed below:

Mol	Chain	Res	Type	Atoms	Z	Observed(°)	Ideal(°)
2	A	401	5FI	N1-C2-N3	-6.06	120.93	127.72
2	A	401	5FI	C5-C6-N1	-2.58	120.65	124.36
2	A	401	5FI	CAO-NAZ-CAL	2.20	115.66	111.06
2	A	401	5FI	CAN-NBA-CAM	3.57	119.21	111.54
2	A	401	5FI	CAL-NAZ-CAK	3.87	117.42	108.87
2	A	401	5FI	C2-N3-C4	4.12	121.51	111.74
2	A	401	5FI	C6-N1-C2	4.46	121.07	115.83

There are no chirality outliers.

There are no torsion outliers.

There are no ring outliers.

1 monomer is involved in 2 short contacts:

Mol	Chain	Res	Type	Clashes	Symm-Clashes
2	A	401	5FI	2	0

## 5.7 Other polymers [i](#)

There are no such residues in this entry.

## 5.8 Polymer linkage issues [i](#)

There are no chain breaks in this entry.

## 6 Fit of model and data

### 6.1 Protein, DNA and RNA chains

In the following table, the column labelled ‘#RSRZ> 2’ contains the number (and percentage) of RSRZ outliers, followed by percent RSRZ outliers for the chain as percentile scores relative to all X-ray entries and entries of similar resolution. The OWAB column contains the minimum, median, 95<sup>th</sup> percentile and maximum values of the occupancy-weighted average B-factor per residue. The column labelled ‘Q< 0.9’ lists the number of (and percentage) of residues with an average occupancy less than 0.9.

Mol	Chain	Analysed	<RSRZ>	#RSRZ>2	OWAB(Å <sup>2</sup> )	Q<0.9
1	A	317/346 (91%)	0.42	25 (7%) <b>12</b> <b>9</b>	30, 71, 128, 158	0

All (25) RSRZ outliers are listed below:

Mol	Chain	Res	Type	RSRZ
1	A	220	SER	6.0
1	A	365	ARG	3.7
1	A	64	ARG	3.6
1	A	284	LYS	3.4
1	A	243	MET	3.3
1	A	249	ARG	2.9
1	A	349	LEU	2.9
1	A	285	CYS	2.8
1	A	350	LEU	2.8
1	A	241	ILE	2.7
1	A	305	LEU	2.7
1	A	282	ILE	2.6
1	A	367	THR	2.4
1	A	277	LYS	2.3
1	A	283	LEU	2.3
1	A	394	SER	2.3
1	A	366	GLN	2.2
1	A	343	GLU	2.2
1	A	369	VAL	2.1
1	A	239	PRO	2.1
1	A	368	PRO	2.1
1	A	307	ARG	2.1
1	A	242	LEU	2.1
1	A	273	GLU	2.0
1	A	347	LYS	2.0

## 6.2 Non-standard residues in protein, DNA, RNA chains [i](#)

There are no non-standard protein/DNA/RNA residues in this entry.

## 6.3 Carbohydrates [i](#)

There are no carbohydrates in this entry.

## 6.4 Ligands [i](#)

In the following table, the Atoms column lists the number of modelled atoms in the group and the number defined in the chemical component dictionary. The B-factors column lists the minimum, median, 95<sup>th</sup> percentile and maximum values of B factors of atoms in the group. The column labelled 'Q< 0.9' lists the number of atoms with occupancy less than 0.9.

Mol	Type	Chain	Res	Atoms	RSCC	RSR	B-factors(Å <sup>2</sup> )	Q<0.9
2	5FI	A	401	28/28	0.92	0.29	77,84,104,109	0

## 6.5 Other polymers [i](#)

There are no such residues in this entry.