



Full wwPDB X-ray Structure Validation Report ⓘ

Jun 12, 2024 – 04:42 PM EDT

PDB ID : 3L76
Title : Crystal Structure of Aspartate Kinase from *Synechocystis*
Authors : Robin, A.; Cobessi, D.; Curien, G.; Robert-Genthon, M.; Ferrer, J.-L.; Dumas, R.
Deposited on : 2009-12-28
Resolution : 2.54 Å (reported)

This is a Full wwPDB X-ray Structure Validation Report for a publicly released PDB entry.

We welcome your comments at validation@mail.wwpdb.org

A user guide is available at

<https://www.wwpdb.org/validation/2017/XrayValidationReportHelp>

with specific help available everywhere you see the ⓘ symbol.

The types of validation reports are described at

<http://www.wwpdb.org/validation/2017/FAQs#types>.

The following versions of software and data (see [references ⓘ](#)) were used in the production of this report:

MolProbity : 4.02b-467
Mogul : 2022.3.0, CSD as543be (2022)
Xtriage (Phenix) : 1.20.1
EDS : 2.36.2
Percentile statistics : 20191225.v01 (using entries in the PDB archive December 25th 2019)
Refmac : 5.8.0158
CCP4 : 7.0.044 (Gargrove)
Ideal geometry (proteins) : Engh & Huber (2001)
Ideal geometry (DNA, RNA) : Parkinson et al. (1996)
Validation Pipeline (wwPDB-VP) : 2.36.2

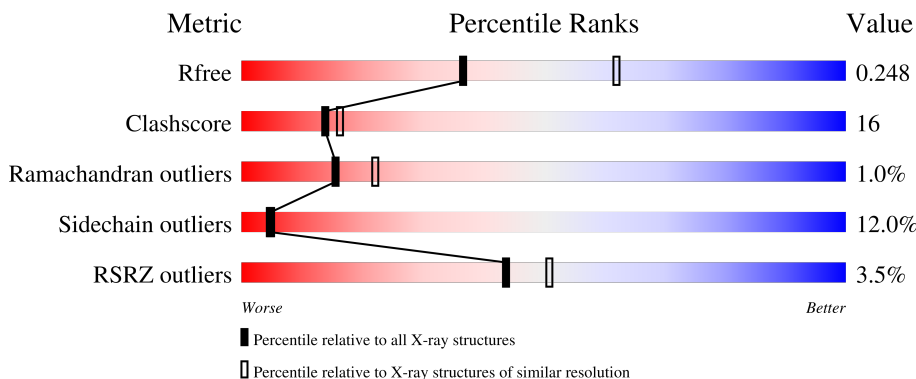
1 Overall quality at a glance

The following experimental techniques were used to determine the structure:

X-RAY DIFFRACTION

The reported resolution of this entry is 2.54 Å.

Percentile scores (ranging between 0-100) for global validation metrics of the entry are shown in the following graphic. The table shows the number of entries on which the scores are based.



Metric	Whole archive (#Entries)	Similar resolution (#Entries, resolution range(Å))
R_{free}	130704	1284 (2.56-2.52)
Clashscore	141614	1332 (2.56-2.52)
Ramachandran outliers	138981	1315 (2.56-2.52)
Sidechain outliers	138945	1315 (2.56-2.52)
RSRZ outliers	127900	1272 (2.56-2.52)

The table below summarises the geometric issues observed across the polymeric chains and their fit to the electron density. The red, orange, yellow and green segments of the lower bar indicate the fraction of residues that contain outliers for ≥ 3 , 2, 1 and 0 types of geometric quality criteria respectively. A grey segment represents the fraction of residues that are not modelled. The numeric value for each fraction is indicated below the corresponding segment, with a dot representing fractions $\leq 5\%$. The upper red bar (where present) indicates the fraction of residues that have poor fit to the electron density. The numeric value is given above the bar.

Mol	Chain	Length	Quality of chain
1	A	600	
1	B	600	

The following table lists non-polymeric compounds, carbohydrate monomers and non-standard residues in protein, DNA, RNA chains that are outliers for geometric or electron-density-fit criteria:

Mol	Type	Chain	Res	Chirality	Geometry	Clashes	Electron density
2	THR	B	601	-	-	X	-

2 Entry composition [i](#)

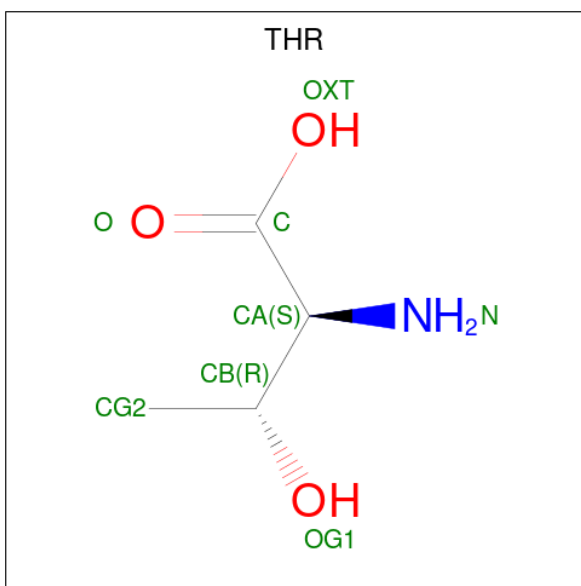
There are 5 unique types of molecules in this entry. The entry contains 8863 atoms, of which 0 are hydrogens and 0 are deuteriums.

In the tables below, the ZeroOcc column contains the number of atoms modelled with zero occupancy, the AltConf column contains the number of residues with at least one atom in alternate conformation and the Trace column contains the number of residues modelled with at most 2 atoms.

- Molecule 1 is a protein called Aspartokinase.

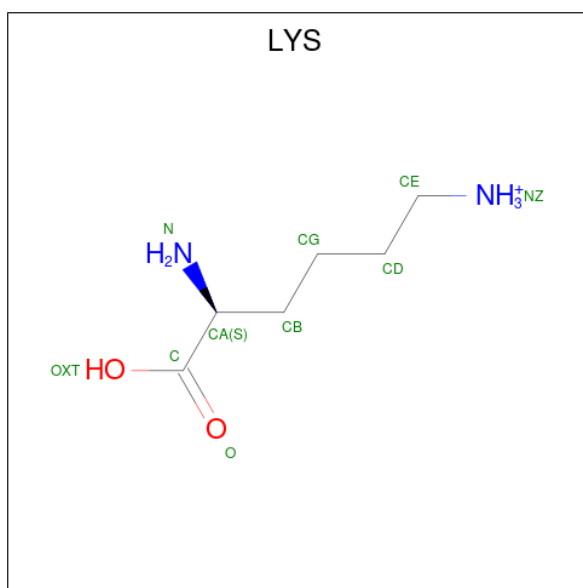
Mol	Chain	Residues	Atoms					ZeroOcc	AltConf	Trace
			Total	C	N	O	S			
1	A	585	Total 4335	C 2723	N 759	O 833	S 20	0	12	0
1	B	581	Total 4277	C 2694	N 735	O 828	S 20	0	12	0

- Molecule 2 is THREONINE (three-letter code: THR) (formula: C₄H₉NO₃).



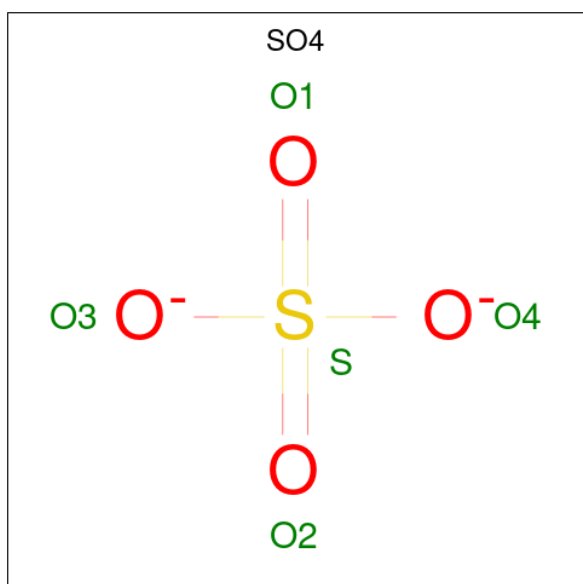
Mol	Chain	Residues	Atoms				ZeroOcc	AltConf
			Total	C	N	O		
2	A	1	Total 8	C 4	N 1	O 3	0	0
2	A	1	Total 8	C 4	N 1	O 3	0	0
2	B	1	Total 8	C 4	N 1	O 3	0	0
2	B	1	Total 8	C 4	N 1	O 3	0	0

- Molecule 3 is LYSINE (three-letter code: LYS) (formula: $C_6H_{15}N_2O_2$).



Mol	Chain	Residues	Atoms				ZeroOcc	AltConf
			Total	C	N	O		
3	A	1	Total 10	C 6	N 2	O 2	0	0
3	A	1	Total 10	C 6	N 2	O 2	0	0
3	B	1	Total 10	C 6	N 2	O 2	0	0
3	B	1	Total 10	C 6	N 2	O 2	0	0

- Molecule 4 is SULFATE ION (three-letter code: SO4) (formula: O_4S).



Mol	Chain	Residues	Atoms			ZeroOcc	AltConf
4	A	1	Total	O	S	0	0
			5	4	1		

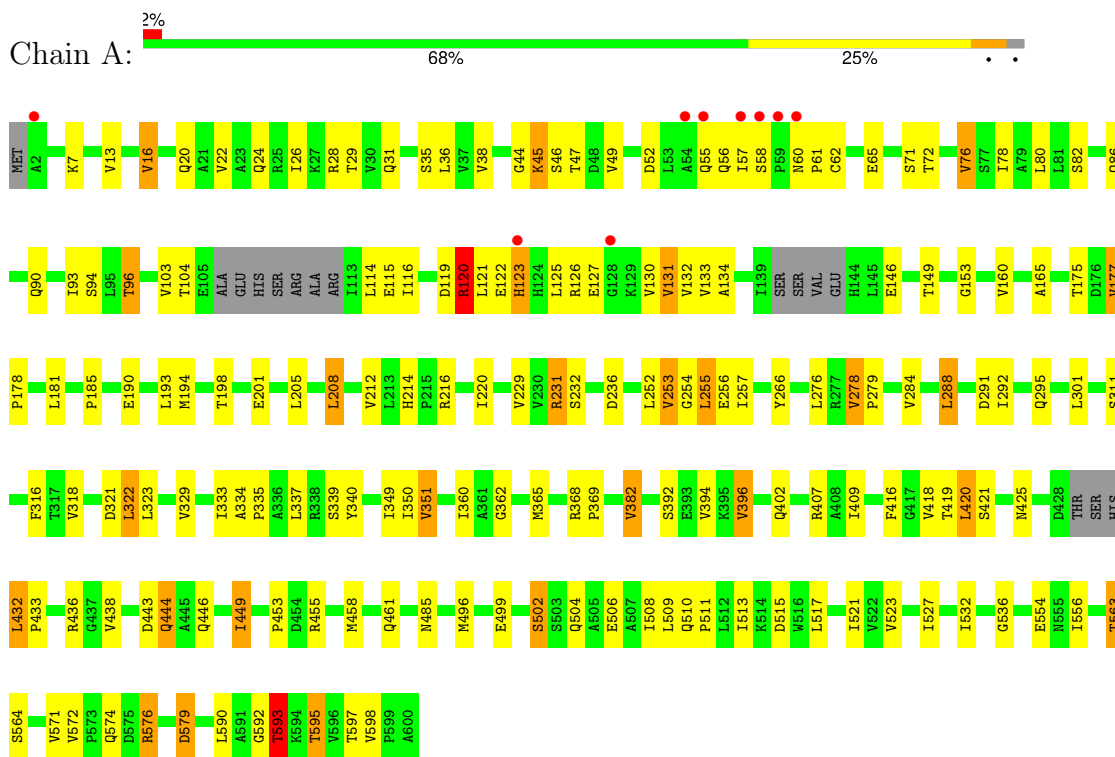
- Molecule 5 is water.

Mol	Chain	Residues	Atoms		ZeroOcc	AltConf
5	A	101	Total	O	0	0
			101	101		
5	B	73	Total	O	0	0
			73	73		

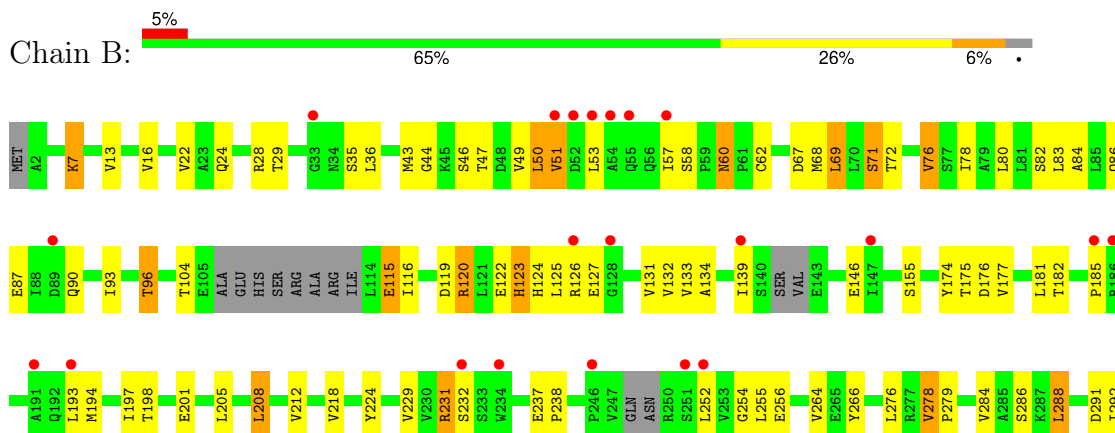
3 Residue-property plots [i](#)

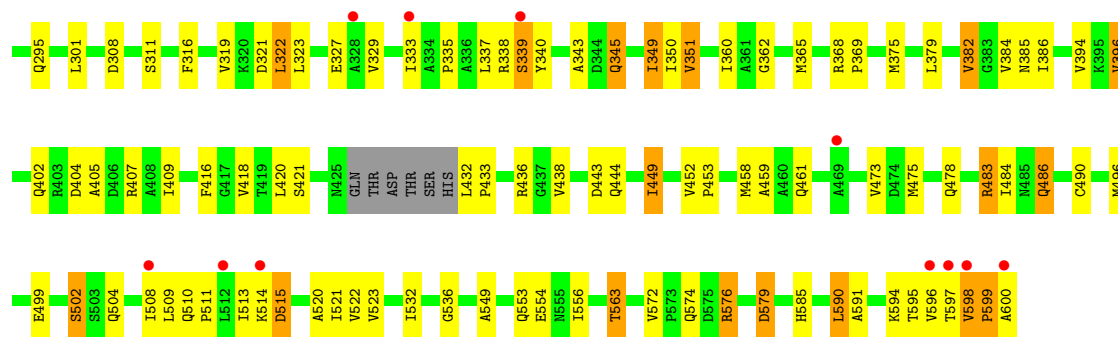
These plots are drawn for all protein, RNA, DNA and oligosaccharide chains in the entry. The first graphic for a chain summarises the proportions of the various outlier classes displayed in the second graphic. The second graphic shows the sequence view annotated by issues in geometry and electron density. Residues are color-coded according to the number of geometric quality criteria for which they contain at least one outlier: green = 0, yellow = 1, orange = 2 and red = 3 or more. A red dot above a residue indicates a poor fit to the electron density ($RSRZ > 2$). Stretches of 2 or more consecutive residues without any outlier are shown as a green connector. Residues present in the sample, but not in the model, are shown in grey.

- Molecule 1: Aspartokinase



- Molecule 1: Aspartokinase





4 Data and refinement statistics

Property	Value	Source
Space group	C 2 2 21	Depositor
Cell constants a, b, c, α , β , γ	86.21Å 237.71Å 150.08Å 90.00° 90.00° 90.00°	Depositor
Resolution (Å)	41.40 – 2.54 41.43 – 2.54	Depositor EDS
% Data completeness (in resolution range)	99.7 (41.40-2.54) 99.7 (41.43-2.54)	Depositor EDS
R_{merge}	0.07	Depositor
R_{sym}	0.07	Depositor
$\langle I/\sigma(I) \rangle$ ¹	3.19 (at 2.54Å)	Xtrriage
Refinement program	PHENIX (phenix.refine: 1.5_2)	Depositor
R, R_{free}	0.199 , 0.255 0.194 , 0.248	Depositor DCC
R_{free} test set	2554 reflections (5.00%)	wwPDB-VP
Wilson B-factor (Å ²)	45.1	Xtrriage
Anisotropy	0.525	Xtrriage
Bulk solvent k_{sol} (e/Å ³), B_{sol} (Å ²)	0.32 , 70.8	EDS
L-test for twinning ²	$\langle L \rangle = 0.48$, $\langle L^2 \rangle = 0.31$	Xtrriage
Estimated twinning fraction	No twinning to report.	Xtrriage
F_o, F_c correlation	0.94	EDS
Total number of atoms	8863	wwPDB-VP
Average B, all atoms (Å ²)	61.0	wwPDB-VP

Xtrriage's analysis on translational NCS is as follows: *The largest off-origin peak in the Patterson function is 3.40% of the height of the origin peak. No significant pseudotranslation is detected.*

¹Intensities estimated from amplitudes.

²Theoretical values of $\langle |L| \rangle$, $\langle L^2 \rangle$ for acentric reflections are 0.5, 0.333 respectively for untwinned datasets, and 0.375, 0.2 for perfectly twinned datasets.

5 Model quality [i](#)

5.1 Standard geometry [i](#)

Bond lengths and bond angles in the following residue types are not validated in this section: SO4

The Z score for a bond length (or angle) is the number of standard deviations the observed value is removed from the expected value. A bond length (or angle) with $|Z| > 5$ is considered an outlier worth inspection. RMSZ is the root-mean-square of all Z scores of the bond lengths (or angles).

Mol	Chain	Bond lengths		Bond angles	
		RMSZ	# Z >5	RMSZ	# Z >5
1	A	0.39	0/4423	0.59	0/6018
1	B	0.40	1/4362 (0.0%)	0.60	0/5939
All	All	0.40	1/8785 (0.0%)	0.59	0/11957

All (1) bond length outliers are listed below:

Mol	Chain	Res	Type	Atoms	Z	Observed(Å)	Ideal(Å)
1	B	62	CYS	CB-SG	-5.27	1.73	1.81

There are no bond angle outliers.

There are no chirality outliers.

There are no planarity outliers.

5.2 Too-close contacts [i](#)

In the following table, the Non-H and H(model) columns list the number of non-hydrogen atoms and hydrogen atoms in the chain respectively. The H(added) column lists the number of hydrogen atoms added and optimized by MolProbity. The Clashes column lists the number of clashes within the asymmetric unit, whereas Symm-Clashes lists symmetry-related clashes.

Mol	Chain	Non-H	H(model)	H(added)	Clashes	Symm-Clashes
1	A	4335	0	4419	133	0
1	B	4277	0	4356	156	0
2	A	16	0	12	0	0
2	B	16	0	12	4	0
3	A	20	0	24	1	0
3	B	20	0	24	1	0
4	A	5	0	0	0	0
5	A	101	0	0	2	0

Continued on next page...

Continued from previous page...

Mol	Chain	Non-H	H(model)	H(added)	Clashes	Symm-Clashes
5	B	73	0	0	6	0
All	All	8863	0	8847	277	0

The all-atom clashscore is defined as the number of clashes found per 1000 atoms (including hydrogen atoms). The all-atom clashscore for this structure is 16.

All (277) close contacts within the same asymmetric unit are listed below, sorted by their clash magnitude.

Atom-1	Atom-2	Interatomic distance (Å)	Clash overlap (Å)
1:B:126:ARG:HH21	1:B:131:VAL:HG23	1.19	1.03
1:B:264[B]:VAL:HG13	1:B:420:LEU:HD23	1.54	0.89
1:A:126:ARG:HH21	1:A:131:VAL:HG13	1.42	0.85
1:A:58:SER:HB2	1:B:87:GLU:HG2	1.60	0.84
1:A:201:GLU:OE2	1:A:436:ARG:HD2	1.81	0.80
1:A:323:LEU:HD11	1:A:351:VAL:CG2	2.12	0.80
1:A:80:LEU:HD12	1:B:57:ILE:HD12	1.66	0.77
1:A:126:ARG:HH21	1:A:131:VAL:CG1	1.98	0.76
1:A:252:LEU:HD11	1:A:255:LEU:HG	1.67	0.76
1:A:52:ASP:O	1:A:56:GLN:HG3	1.85	0.76
1:B:76:VAL:HG23	1:B:80:LEU:HD23	1.68	0.73
1:A:35:SER:HB3	1:A:126:ARG:HH11	1.54	0.73
1:B:478:GLN:OE1	2:B:601:THR:HG21	1.89	0.72
1:B:590:LEU:HB3	5:B:667:HOH:O	1.89	0.71
1:A:45:LYS:O	1:A:49:VAL:HG23	1.91	0.71
1:A:120:ARG:HB2	1:A:123:HIS:HB2	1.71	0.71
1:B:323:LEU:HD11	1:B:351:VAL:HG22	1.72	0.71
1:B:224:TYR:HE1	1:B:252:LEU:HB2	1.56	0.70
1:A:323:LEU:HD11	1:A:351:VAL:HG22	1.72	0.70
1:B:264[B]:VAL:HG13	1:B:420:LEU:CD2	2.20	0.70
1:B:50:LEU:HG	1:B:69:LEU:HD22	1.73	0.69
1:A:432:LEU:HD13	1:A:433:PRO:HD2	1.74	0.69
1:B:590:LEU:HD13	1:B:591:ALA:N	2.07	0.68
1:B:386:ILE:HB	2:B:601:THR:HG22	1.75	0.68
1:A:35:SER:HB3	1:A:126:ARG:NH1	2.09	0.67
1:A:120:ARG:O	1:A:120:ARG:HG2	1.94	0.67
1:B:276:LEU:HD11	1:B:350:ILE:HD13	1.77	0.66
1:B:556:ILE:HG12	1:B:576[A]:ARG:HG2	1.77	0.66
1:A:119[A]:ASP:HB3	1:A:120:ARG:HE	1.61	0.66
1:A:76:VAL:HG12	1:B:72:THR:HG21	1.78	0.65
1:A:253:VAL:HG12	1:A:254:GLY:N	2.10	0.65
1:A:556:ILE:HG12	1:A:576:ARG:HG2	1.77	0.65

Continued on next page...

Continued from previous page...

Atom-1	Atom-2	Interatomic distance (Å)	Clash overlap (Å)
1:B:576[B]:ARG:HB2	1:B:576[B]:ARG:NH1	2.12	0.65
1:A:266:TYR:CG	1:A:409:ILE:HD11	2.31	0.65
1:A:57:ILE:O	1:B:87:GLU:HG3	1.96	0.64
1:A:554:GLU:O	1:A:576:ARG:NH2	2.30	0.64
1:B:182:THR:HA	1:B:194:MET:HE2	1.77	0.64
1:B:201:GLU:OE2	1:B:436:ARG:HD2	1.98	0.64
1:A:229:VAL:HG11	1:A:231[B]:ARG:HD2	1.80	0.63
1:B:126:ARG:NH2	1:B:131:VAL:HG23	2.04	0.63
1:A:93:ILE:HD13	1:A:125:LEU:HD13	1.81	0.63
1:A:362:GLY:C	1:A:394[A]:VAL:HG23	2.19	0.63
1:B:266:TYR:HB2	1:B:409[A]:ILE:HG21	1.79	0.63
1:B:237[A]:GLU:HG2	1:B:238:PRO:HD2	1.80	0.63
1:B:67:ASP:O	1:B:71:SER:HB3	1.99	0.62
1:B:323:LEU:HD11	1:B:351:VAL:CG2	2.30	0.62
1:B:556:ILE:HG12	1:B:576[B]:ARG:HG2	1.81	0.62
1:A:278:VAL:HG22	1:A:279:PRO:HD2	1.80	0.62
1:A:44:GLY:C	1:A:46:SER:H	2.04	0.61
1:B:60:ASN:O	1:B:60:ASN:ND2	2.30	0.61
1:B:301:LEU:HA	1:B:563:THR:HG21	1.82	0.61
1:A:433:PRO:O	1:A:536:GLY:HA3	2.00	0.61
1:A:392:SER:O	3:A:604:LYS:NZ	2.33	0.61
1:B:340:TYR:CE2	1:B:343:ALA:HB2	2.35	0.61
1:B:93:ILE:HD13	1:B:125:LEU:HD13	1.83	0.61
1:B:205:LEU:HD22	1:B:208:LEU:HD22	1.81	0.60
1:A:278:VAL:O	1:A:311:SER:HB2	2.01	0.60
1:A:119[B]:ASP:HB2	1:A:120:ARG:HE	1.65	0.60
1:B:35:SER:HB3	1:B:126:ARG:HH11	1.67	0.59
1:B:291:ASP:HB2	1:B:333:ILE:CD1	2.32	0.59
1:B:47:THR:O	1:B:51:VAL:HG12	2.01	0.59
1:A:438:VAL:HG12	1:A:532:ILE:HG22	1.84	0.59
1:A:13:VAL:CG1	1:A:13:VAL:O	2.50	0.59
1:A:126:ARG:NH2	1:A:131:VAL:HG13	2.16	0.59
1:B:29:THR:HG22	1:B:36:LEU:HD11	1.85	0.58
1:B:13:VAL:HG12	1:B:13:VAL:O	2.02	0.58
1:A:29:THR:HG22	1:A:36:LEU:HD11	1.86	0.58
1:B:278[A]:VAL:HG22	1:B:279:PRO:HD2	1.85	0.58
1:A:13:VAL:O	1:A:13:VAL:HG12	2.03	0.58
1:B:13:VAL:O	1:B:13:VAL:CG1	2.51	0.58
1:B:486:GLN:OE1	1:B:486:GLN:HA	2.04	0.57
1:B:181:LEU:HD13	1:B:185:PRO:HG3	1.87	0.57
1:B:483[B]:ARG:NH2	5:B:632:HOH:O	2.38	0.57

Continued on next page...

Continued from previous page...

Atom-1	Atom-2	Interatomic distance (Å)	Clash overlap (Å)
1:A:78:ILE:HD13	1:A:134:ALA:HB3	1.85	0.57
1:B:49:VAL:O	1:B:53:LEU:HD13	2.04	0.57
1:B:131:VAL:HG12	1:B:133:VAL:HG23	1.87	0.56
1:B:585:HIS:CB	1:B:590:LEU:HG	2.35	0.56
1:A:382:VAL:O	1:A:407[B]:ARG:NH1	2.39	0.56
1:A:181:LEU:HD13	1:A:185:PRO:HG3	1.88	0.56
1:A:96:THR:HG22	1:B:146:GLU:HG3	1.88	0.56
1:A:94:SER:HB2	1:B:68:MET:HE1	1.89	0.55
1:A:510[B]:GLN:HB3	1:A:511:PRO:HD3	1.87	0.55
1:B:295:GLN:HG3	1:B:329:VAL:HG21	1.89	0.55
1:B:362:GLY:C	1:B:394[A]:VAL:HG23	2.26	0.55
1:A:76:VAL:O	1:A:80:LEU:HD23	2.07	0.55
1:A:229:VAL:HG12	1:A:231[B]:ARG:HG3	1.88	0.54
1:B:197:ILE:HA	1:B:436:ARG:HD3	1.89	0.54
1:B:264[B]:VAL:CG1	1:B:420:LEU:HD23	2.35	0.54
1:A:58:SER:CB	1:B:87:GLU:HG2	2.35	0.54
1:B:116:ILE:CG2	1:B:255:LEU:HB3	2.38	0.54
1:A:205:LEU:HD22	1:A:208:LEU:HD22	1.90	0.53
1:A:301:LEU:HA	1:A:563:THR:HG21	1.89	0.53
1:B:78:ILE:HD13	1:B:134:ALA:HB3	1.90	0.53
1:A:392:SER:HB3	1:A:564:SER:HB3	1.91	0.53
1:A:153:GLY:HA2	1:A:214[A]:HIS:CE1	2.44	0.53
1:A:449:ILE:HD13	1:A:513:ILE:HG21	1.91	0.53
1:A:592:GLY:O	1:A:593:THR:HG23	2.09	0.53
1:B:122:GLU:HB2	1:B:131:VAL:HG21	1.91	0.53
1:B:35:SER:HB3	1:B:126:ARG:NH1	2.24	0.52
1:A:295:GLN:HG3	1:A:329:VAL:HG21	1.90	0.52
1:A:291:ASP:HB2	1:A:333:ILE:CD1	2.40	0.51
1:A:78:ILE:HB	1:A:132:VAL:HG12	1.92	0.51
1:A:229:VAL:CG1	1:A:231[B]:ARG:HD2	2.39	0.51
1:B:237[A]:GLU:CG	1:B:238:PRO:HD2	2.41	0.51
1:B:78:ILE:HB	1:B:132:VAL:HG12	1.91	0.51
1:A:96:THR:HA	1:A:134:ALA:O	2.11	0.51
1:A:504:GLN:O	1:A:508:ILE:HG13	2.11	0.51
1:B:291:ASP:HB2	1:B:333:ILE:HD13	1.93	0.50
1:B:385:ASN:OD1	2:B:601:THR:N	2.44	0.50
1:A:57:ILE:HD12	1:B:80:LEU:HD12	1.92	0.50
1:A:506:GLU:O	1:A:510[A]:GLN:HG3	2.12	0.50
1:B:459:ALA:HB2	2:B:601:THR:HG23	1.93	0.50
1:B:484:ILE:HD12	1:B:484:ILE:O	2.11	0.50
1:A:126:ARG:NH2	1:A:131:VAL:H	2.10	0.50

Continued on next page...

Continued from previous page...

Atom-1	Atom-2	Interatomic distance (Å)	Clash overlap (Å)
1:B:504:GLN:O	1:B:508:ILE:HG13	2.11	0.50
1:B:576[B]:ARG:HB2	1:B:576[B]:ARG:HH11	1.76	0.49
1:A:432:LEU:HD13	1:A:433:PRO:CD	2.41	0.49
1:A:563:THR:HG23	5:A:684:HOH:O	2.13	0.49
1:B:104:THR:HG23	1:B:139:ILE:HG12	1.95	0.49
1:B:174:TYR:CE2	1:B:231:ARG:HD3	2.47	0.49
1:B:438:VAL:HG12	1:B:532:ILE:HG22	1.94	0.49
1:B:327:GLU:HG3	1:B:349:ILE:HD11	1.95	0.49
1:B:345:GLN:CD	1:B:345:GLN:H	2.16	0.49
1:B:46:SER:O	1:B:49:VAL:HG22	2.13	0.49
1:B:510:GLN:HB3	1:B:511:PRO:HD3	1.94	0.49
1:A:276:LEU:HD11	1:A:350:ILE:HD13	1.94	0.49
1:A:44:GLY:C	1:A:46:SER:N	2.66	0.48
1:B:124:HIS:C	1:B:126:ARG:H	2.15	0.48
1:B:126:ARG:NH2	1:B:131:VAL:H	2.11	0.48
1:A:122:GLU:HB2	1:A:131:VAL:HG11	1.96	0.48
1:A:198:THR:OG1	1:A:201:GLU:HG3	2.14	0.48
1:A:288:LEU:HD22	1:A:292:ILE:HD11	1.96	0.48
1:B:104:THR:HG23	1:B:139:ILE:CG1	2.44	0.48
1:B:360:ILE:HD13	1:B:375:MET:HB2	1.95	0.48
1:A:82:SER:O	1:A:86:GLN:HG3	2.14	0.47
1:B:598:VAL:HA	1:B:599:PRO:HD3	1.67	0.47
1:B:176:ASP:O	1:B:177:VAL:HG23	2.14	0.47
1:B:449[A]:ILE:HD12	1:B:520:ALA:O	2.14	0.47
1:B:288:LEU:HD22	1:B:292:ILE:HD11	1.96	0.47
1:A:165:ALA:HB2	1:A:252:LEU:HD23	1.95	0.47
1:A:78:ILE:HG21	1:A:134:ALA:HB2	1.96	0.47
1:A:103:VAL:HG22	1:A:116[A]:ILE:HD13	1.96	0.47
1:A:120:ARG:N	1:A:120:ARG:NE	2.63	0.47
1:B:360:ILE:HG12	1:B:396:VAL:HG13	1.96	0.47
1:B:115:GLU:OE1	1:B:255:LEU:N	2.48	0.47
1:B:368:ARG:HA	1:B:369:PRO:HD3	1.78	0.47
1:B:576[A]:ARG:HG3	1:B:579:ASP:HB2	1.97	0.47
1:A:288:LEU:HD22	1:A:292:ILE:CD1	2.45	0.47
1:B:76:VAL:HG23	1:B:80:LEU:CD2	2.43	0.47
1:B:549:ALA:O	1:B:553:GLN:HG3	2.15	0.47
1:A:120:ARG:HE	1:A:120:ARG:N	2.13	0.47
1:A:301:LEU:O	1:A:316:PHE:HA	2.15	0.47
1:B:96:THR:HA	1:B:134:ALA:O	2.14	0.47
1:B:453:PRO:O	1:B:458:MET:HG3	2.15	0.47
1:A:231[A]:ARG:HH22	1:A:236:ASP:HA	1.80	0.46

Continued on next page...

Continued from previous page...

Atom-1	Atom-2	Interatomic distance (Å)	Clash overlap (Å)
1:A:499:GLU:O	1:A:502:SER:HB2	2.15	0.46
1:B:288:LEU:HD22	1:B:292:ILE:CD1	2.46	0.46
1:B:231:ARG:HB3	1:B:231:ARG:HH11	1.80	0.46
1:B:590:LEU:HD13	1:B:590:LEU:C	2.35	0.46
1:A:116[B]:ILE:HG22	1:A:257:ILE:CG2	2.45	0.46
1:B:499:GLU:O	1:B:502:SER:HB2	2.16	0.46
1:A:334:ALA:HB3	1:A:335:PRO:HD3	1.98	0.46
1:A:360:ILE:HG12	1:A:396:VAL:HG13	1.98	0.46
1:B:335:PRO:O	1:B:338:ARG:HG3	2.16	0.46
1:A:116[B]:ILE:HG22	1:A:255:LEU:O	2.16	0.46
1:B:181:LEU:HD23	1:B:193:LEU:HA	1.98	0.46
1:A:595:THR:O	1:A:595:THR:HG22	2.16	0.46
1:B:120:ARG:CB	1:B:123:HIS:HB2	2.46	0.45
1:B:514:LYS:HE2	1:B:515:ASP:OD2	2.16	0.45
1:B:78:ILE:HG21	1:B:134:ALA:HB2	1.98	0.45
1:B:301:LEU:HA	1:B:563:THR:CG2	2.46	0.45
1:B:308:ASP:CG	1:B:483[B]:ARG:NH2	2.69	0.45
1:B:181:LEU:CD1	1:B:185:PRO:HG3	2.46	0.45
1:A:279:PRO:O	1:A:284:VAL:HG21	2.16	0.45
1:B:80:LEU:HD13	1:B:80:LEU:HA	1.76	0.45
1:A:574:GLN:C	1:A:576:ARG:H	2.19	0.45
1:B:266:TYR:CE1	1:B:405:ALA:HB1	2.52	0.45
1:B:286:SER:HB2	5:B:609:HOH:O	2.16	0.45
1:A:80:LEU:HD13	1:A:80:LEU:HA	1.77	0.45
1:B:60:ASN:ND2	1:B:60:ASN:H	2.14	0.45
1:A:72:THR:HB	1:B:72:THR:HB	1.99	0.45
1:A:509:LEU:HB2	1:A:521:ILE:CD1	2.46	0.45
1:A:201:GLU:OE2	1:A:436:ARG:CD	2.59	0.45
1:B:433:PRO:O	1:B:536:GLY:HA3	2.17	0.45
1:A:146:GLU:HB2	1:B:96:THR:HG22	1.99	0.44
1:A:322:LEU:HD12	1:A:322:LEU:HA	1.65	0.44
1:B:432:LEU:HA	1:B:433:PRO:HD3	1.54	0.44
1:B:574:GLN:C	1:B:576[B]:ARG:H	2.19	0.44
1:B:554:GLU:O	1:B:576[A]:ARG:NH2	2.46	0.44
1:B:360:ILE:CG1	1:B:396:VAL:HG13	2.47	0.44
1:B:590:LEU:HD12	5:B:674:HOH:O	2.17	0.44
1:A:278:VAL:HG22	1:A:279:PRO:CD	2.46	0.44
1:B:579:ASP:OD1	1:B:579:ASP:N	2.50	0.44
1:B:116:ILE:HG23	1:B:255:LEU:HB3	1.98	0.44
1:B:229:VAL:HG12	1:B:231:ARG:HG3	2.00	0.44
1:B:308:ASP:CG	1:B:483[B]:ARG:HH22	2.20	0.44

Continued on next page...

Continued from previous page...

Atom-1	Atom-2	Interatomic distance (Å)	Clash overlap (Å)
1:B:279:PRO:O	1:B:284:VAL:HG21	2.17	0.44
1:B:375:MET:SD	1:B:396:VAL:HG22	2.58	0.44
1:B:404:ASP:OD1	1:B:407:ARG:NH2	2.51	0.44
1:A:181:LEU:HD23	1:A:193:LEU:HA	2.00	0.44
1:A:453:PRO:O	1:A:458:MET:HG3	2.18	0.44
1:B:13:VAL:O	1:B:43:MET:HE3	2.17	0.44
1:B:319:VAL:HG13	5:B:677:HOH:O	2.17	0.44
1:B:291:ASP:HB2	1:B:333:ILE:HD11	2.00	0.43
1:B:82:SER:O	1:B:86:GLN:HG3	2.18	0.43
1:A:26:ILE:HD13	1:A:38:VAL:HG21	2.00	0.43
1:A:29:THR:CG2	1:A:36:LEU:HD11	2.48	0.43
1:A:291:ASP:HB2	1:A:333:ILE:HD13	1.99	0.43
1:B:124:HIS:O	1:B:126:ARG:N	2.52	0.43
1:B:382:VAL:O	1:B:407:ARG:HD2	2.18	0.43
1:A:416:PHE:O	1:A:418:VAL:HG13	2.18	0.43
1:B:44:GLY:C	1:B:46:SER:H	2.21	0.43
1:A:181:LEU:O	1:A:194:MET:HE3	2.19	0.43
1:B:599:PRO:O	1:B:600:ALA:C	2.57	0.43
1:B:322:LEU:HD12	1:B:322:LEU:HA	1.60	0.43
1:A:116[A]:ILE:HG22	1:A:257:ILE:CG2	2.48	0.43
1:A:190:GLU:CD	1:A:190:GLU:H	2.22	0.43
1:B:175:THR:O	1:B:232:SER:HA	2.19	0.43
1:A:146:GLU:HB2	1:B:96:THR:CG2	2.49	0.43
1:A:444:GLN:HG2	1:A:496:MET:HB3	2.01	0.43
1:A:360:ILE:CG1	1:A:396:VAL:HG13	2.49	0.43
1:B:119:ASP:CG	1:B:120:ARG:H	2.22	0.42
1:B:24:GLN:O	1:B:28:ARG:HG3	2.19	0.42
1:B:379:LEU:HB3	1:B:384:VAL:HG22	2.00	0.42
1:A:181:LEU:CD1	1:A:185:PRO:HG3	2.48	0.42
1:B:509:LEU:HB2	1:B:521:ILE:CD1	2.49	0.42
1:A:362:GLY:O	1:A:394[A]:VAL:HG23	2.18	0.42
1:A:16:VAL:O	1:A:20:GLN:HG3	2.20	0.42
1:A:231[A]:ARG:NH2	1:A:236:ASP:HA	2.34	0.42
1:A:334:ALA:CB	1:A:349[A]:ILE:HD11	2.49	0.42
1:A:510[A]:GLN:HB2	1:A:511:PRO:HD3	2.01	0.42
1:B:513:ILE:HD13	1:B:521:ILE:HG13	2.02	0.42
1:B:319:VAL:HG12	1:B:321:ASP:OD1	2.20	0.42
1:B:511:PRO:O	1:B:514:LYS:HG2	2.19	0.42
1:A:563:THR:CG2	5:A:684:HOH:O	2.65	0.42
1:B:362:GLY:O	1:B:365:MET:HG2	2.20	0.42
3:B:604:LYS:N	5:B:651:HOH:O	2.52	0.42

Continued on next page...

Continued from previous page...

Atom-1	Atom-2	Interatomic distance (Å)	Clash overlap (Å)
1:A:455[A]:ARG:CZ	1:A:458:MET:CE	2.98	0.42
1:B:452:VAL:O	1:B:490:CYS:HB2	2.19	0.42
1:A:57:ILE:CG2	1:B:84:ALA:HA	2.50	0.41
1:A:496:MET:HE1	1:A:571:VAL:HG21	2.02	0.41
1:B:29:THR:CG2	1:B:36:LEU:HD11	2.49	0.41
1:B:338:ARG:O	1:B:339:SER:C	2.58	0.41
1:A:104:THR:O	1:A:114:LEU:HA	2.21	0.41
1:A:177:VAL:HA	1:A:178:PRO:HD3	1.84	0.41
1:B:416:PHE:O	1:B:418:VAL:HG13	2.21	0.41
1:B:124:HIS:C	1:B:126:ARG:N	2.73	0.41
1:B:198:THR:OG1	1:B:201:GLU:HG3	2.20	0.41
1:B:405:ALA:O	1:B:409[A]:ILE:HG12	2.20	0.41
1:A:71:SER:HA	1:A:149:THR:HG23	2.02	0.41
1:A:60:ASN:N	1:A:61:PRO:HD3	2.36	0.41
1:A:160:VAL:HG12	1:A:220:ILE:HG22	2.03	0.41
1:A:175:THR:O	1:A:232:SER:HA	2.21	0.41
1:A:329:VAL:O	1:A:333:ILE:HG13	2.21	0.41
1:B:7:LYS:NZ	1:B:155:SER:HB2	2.35	0.41
1:B:35:SER:C	1:B:36:LEU:HD12	2.41	0.41
1:A:420:LEU:HD22	1:A:421:SER:O	2.21	0.40
1:A:432:LEU:HA	1:A:433:PRO:HD3	1.99	0.40
1:B:301:LEU:O	1:B:316:PHE:HA	2.21	0.40
1:B:590:LEU:CD1	1:B:591:ALA:N	2.81	0.40
1:A:368:ARG:HA	1:A:369:PRO:HD3	1.79	0.40
1:A:579:ASP:OD1	1:A:579:ASP:N	2.53	0.40
1:B:264[B]:VAL:HG22	1:B:409[B]:ILE:CD1	2.51	0.40
1:A:24:GLN:O	1:A:28:ARG:HG3	2.21	0.40
1:A:45:LYS:N	1:A:45:LYS:HE2	2.37	0.40
1:B:475:MET:HB2	1:B:496:MET:HE3	2.03	0.40
1:A:65:GLU:HB2	1:B:83:LEU:HD21	2.03	0.40
1:A:446:GLN:HB2	1:A:527:ILE:HD13	2.03	0.40
1:B:301:LEU:HD23	1:B:563:THR:HG22	2.03	0.40
1:A:362:GLY:O	1:A:365:MET:HG2	2.22	0.40

There are no symmetry-related clashes.

5.3 Torsion angles [i](#)

5.3.1 Protein backbone [i](#)

In the following table, the Percentiles column shows the percent Ramachandran outliers of the chain as a percentile score with respect to all X-ray entries followed by that with respect to entries of similar resolution.

The Analysed column shows the number of residues for which the backbone conformation was analysed, and the total number of residues.

Mol	Chain	Analysed	Favoured	Allowed	Outliers	Percentiles	
1	A	589/600 (98%)	553 (94%)	29 (5%)	7 (1%)	13	17
1	B	583/600 (97%)	542 (93%)	35 (6%)	6 (1%)	15	22
All	All	1172/1200 (98%)	1095 (93%)	64 (6%)	13 (1%)	15	19

All (13) Ramachandran outliers are listed below:

Mol	Chain	Res	Type
1	A	120	ARG
1	A	253	VAL
1	A	425	ASN
1	A	485	ASN
1	B	120	ARG
1	A	593	THR
1	B	339	SER
1	A	255	LEU
1	A	339	SER
1	B	254	GLY
1	B	483[A]	ARG
1	B	483[B]	ARG
1	B	599	PRO

5.3.2 Protein sidechains [i](#)

In the following table, the Percentiles column shows the percent sidechain outliers of the chain as a percentile score with respect to all X-ray entries followed by that with respect to entries of similar resolution.

The Analysed column shows the number of residues for which the sidechain conformation was analysed, and the total number of residues.

Mol	Chain	Analysed	Rotameric	Outliers	Percentiles	
1	A	458/479 (96%)	401 (88%)	57 (12%)	4	4

Continued on next page...

Continued from previous page...

Mol	Chain	Analysed	Rotameric	Outliers	Percentiles	
1	B	452/479 (94%)	398 (88%)	54 (12%)	5	5
All	All	910/958 (95%)	799 (88%)	111 (12%)	5	4

All (111) residues with a non-rotameric sidechain are listed below:

Mol	Chain	Res	Type
1	A	7	LYS
1	A	16	VAL
1	A	22	VAL
1	A	31	GLN
1	A	45	LYS
1	A	47	THR
1	A	55	GLN
1	A	62	CYS
1	A	76	VAL
1	A	90	GLN
1	A	96	THR
1	A	115	GLU
1	A	120	ARG
1	A	121	LEU
1	A	123	HIS
1	A	127	GLU
1	A	130	VAL
1	A	131	VAL
1	A	133	VAL
1	A	177	VAL
1	A	208	LEU
1	A	212	VAL
1	A	216	ARG
1	A	231[A]	ARG
1	A	231[B]	ARG
1	A	256	GLU
1	A	278	VAL
1	A	288	LEU
1	A	318	VAL
1	A	322	LEU
1	A	337	LEU
1	A	340	TYR
1	A	351	VAL
1	A	382	VAL
1	A	396	VAL
1	A	402[A]	GLN

Continued on next page...

Continued from previous page...

Mol	Chain	Res	Type
1	A	402[B]	GLN
1	A	419	THR
1	A	420	LEU
1	A	432	LEU
1	A	443	ASP
1	A	444	GLN
1	A	449	ILE
1	A	461	GLN
1	A	502	SER
1	A	515	ASP
1	A	517	LEU
1	A	523	VAL
1	A	563	THR
1	A	572	VAL
1	A	576	ARG
1	A	579	ASP
1	A	590	LEU
1	A	593	THR
1	A	595	THR
1	A	597	THR
1	A	598	VAL
1	B	7	LYS
1	B	16	VAL
1	B	22	VAL
1	B	50	LEU
1	B	51	VAL
1	B	58	SER
1	B	60	ASN
1	B	69	LEU
1	B	71	SER
1	B	76	VAL
1	B	90	GLN
1	B	96	THR
1	B	115	GLU
1	B	123	HIS
1	B	127	GLU
1	B	208	LEU
1	B	212	VAL
1	B	218	VAL
1	B	231	ARG
1	B	256	GLU
1	B	278[A]	VAL

Continued on next page...

Continued from previous page...

Mol	Chain	Res	Type
1	B	278[B]	VAL
1	B	288	LEU
1	B	322	LEU
1	B	337	LEU
1	B	345	GLN
1	B	349	ILE
1	B	351	VAL
1	B	382	VAL
1	B	396	VAL
1	B	402	GLN
1	B	421	SER
1	B	443	ASP
1	B	444	GLN
1	B	449[A]	ILE
1	B	449[B]	ILE
1	B	461	GLN
1	B	473	VAL
1	B	486	GLN
1	B	502	SER
1	B	515	ASP
1	B	522	VAL
1	B	523	VAL
1	B	563	THR
1	B	572	VAL
1	B	576[A]	ARG
1	B	576[B]	ARG
1	B	579	ASP
1	B	590	LEU
1	B	594	LYS
1	B	595	THR
1	B	596	VAL
1	B	597	THR
1	B	598	VAL

Sometimes sidechains can be flipped to improve hydrogen bonding and reduce clashes. All (3) such sidechains are listed below:

Mol	Chain	Res	Type
1	A	385	ASN
1	A	557	ASN
1	B	385	ASN

5.3.3 RNA [i](#)

There are no RNA molecules in this entry.

5.4 Non-standard residues in protein, DNA, RNA chains [i](#)

There are no non-standard protein/DNA/RNA residues in this entry.

5.5 Carbohydrates [i](#)

There are no monosaccharides in this entry.

5.6 Ligand geometry [i](#)

9 ligands are modelled in this entry.

In the following table, the Counts columns list the number of bonds (or angles) for which Mogul statistics could be retrieved, the number of bonds (or angles) that are observed in the model and the number of bonds (or angles) that are defined in the Chemical Component Dictionary. The Link column lists molecule types, if any, to which the group is linked. The Z score for a bond length (or angle) is the number of standard deviations the observed value is removed from the expected value. A bond length (or angle) with $|Z| > 2$ is considered an outlier worth inspection. RMSZ is the root-mean-square of all Z scores of the bond lengths (or angles).

Mol	Type	Chain	Res	Link	Bond lengths			Bond angles		
					Counts	RMSZ	# Z > 2	Counts	RMSZ	# Z > 2
2	THR	A	601	-	7,7,7	0.87	1 (14%)	8,9,9	1.08	0
4	SO4	A	605	-	4,4,4	0.35	0	6,6,6	1.12	0
2	THR	A	602	-	7,7,7	0.94	0	8,9,9	0.83	0
2	THR	B	602	-	7,7,7	0.89	0	8,9,9	1.44	2 (25%)
3	LYS	A	604	-	8,9,9	0.72	0	7,10,10	0.47	0
3	LYS	A	603	-	8,9,9	0.93	1 (12%)	7,10,10	1.08	1 (14%)
3	LYS	B	603	-	8,9,9	0.79	0	7,10,10	0.80	0
2	THR	B	601	-	7,7,7	1.04	1 (14%)	8,9,9	1.45	1 (12%)
3	LYS	B	604	-	8,9,9	0.74	0	7,10,10	0.86	1 (14%)

In the following table, the Chirals column lists the number of chiral outliers, the number of chiral centers analysed, the number of these observed in the model and the number defined in the Chemical Component Dictionary. Similar counts are reported in the Torsion and Rings columns. '-' means no outliers of that kind were identified.

Mol	Type	Chain	Res	Link	Chirals	Torsions	Rings
2	THR	A	601	-	-	0/8/8/8	-
2	THR	A	602	-	-	0/8/8/8	-
2	THR	B	602	-	-	1/8/8/8	-
3	LYS	A	604	-	-	1/9/9/9	-
3	LYS	A	603	-	-	0/9/9/9	-
3	LYS	B	603	-	-	0/9/9/9	-
2	THR	B	601	-	-	4/8/8/8	-
3	LYS	B	604	-	-	1/9/9/9	-

All (3) bond length outliers are listed below:

Mol	Chain	Res	Type	Atoms	Z	Observed(Å)	Ideal(Å)
2	B	601	THR	OXT-C	-2.26	1.23	1.30
3	A	603	LYS	OXT-C	-2.14	1.23	1.30
2	A	601	THR	OXT-C	-2.03	1.24	1.30

All (5) bond angle outliers are listed below:

Mol	Chain	Res	Type	Atoms	Z	Observed(°)	Ideal(°)
2	B	601	THR	OXT-C-O	-3.33	116.52	124.08
2	B	602	THR	OXT-C-CA	2.70	123.47	114.15
3	A	603	LYS	OXT-C-O	-2.64	118.08	124.08
2	B	602	THR	OXT-C-O	-2.58	118.22	124.08
3	B	604	LYS	OXT-C-O	-2.13	119.25	124.08

There are no chirality outliers.

All (7) torsion outliers are listed below:

Mol	Chain	Res	Type	Atoms
2	B	601	THR	N-CA-CB-OG1
2	B	601	THR	N-CA-CB-CG2
2	B	601	THR	C-CA-CB-OG1
2	B	601	THR	C-CA-CB-CG2
3	B	604	LYS	CG-CD-CE-NZ
3	A	604	LYS	CG-CD-CE-NZ
2	B	602	THR	N-CA-CB-CG2

There are no ring outliers.

3 monomers are involved in 6 short contacts:

Mol	Chain	Res	Type	Clashes	Symm-Clashes
3	A	604	LYS	1	0
2	B	601	THR	4	0
3	B	604	LYS	1	0

5.7 Other polymers [i](#)

There are no such residues in this entry.

5.8 Polymer linkage issues [i](#)

There are no chain breaks in this entry.

6 Fit of model and data

6.1 Protein, DNA and RNA chains

In the following table, the column labelled ‘#RSRZ > 2’ contains the number (and percentage) of RSRZ outliers, followed by percent RSRZ outliers for the chain as percentile scores relative to all X-ray entries and entries of similar resolution. The OWAB column contains the minimum, median, 95th percentile and maximum values of the occupancy-weighted average B-factor per residue. The column labelled ‘Q < 0.9’ lists the number of (and percentage) of residues with an average occupancy less than 0.9.

Mol	Chain	Analysed	<RSRZ>	#RSRZ>2	OWAB(Å ²)	Q<0.9
1	A	585/600 (97%)	0.03	9 (1%) 73 79	24, 57, 95, 147	0
1	B	581/600 (96%)	0.12	32 (5%) 25 30	26, 64, 100, 162	0
All	All	1166/1200 (97%)	0.07	41 (3%) 44 51	24, 61, 98, 162	0

All (41) RSRZ outliers are listed below:

Mol	Chain	Res	Type	RSRZ
1	B	600	ALA	5.0
1	B	55	GLN	4.7
1	B	234	TRP	4.3
1	B	185	PRO	4.1
1	B	251	SER	3.7
1	A	57	ILE	3.4
1	B	51	VAL	3.3
1	A	55	GLN	3.2
1	B	53	LEU	3.0
1	B	328	ALA	3.0
1	B	596	VAL	3.0
1	B	33	GLY	3.0
1	B	128	GLY	2.9
1	B	54	ALA	2.8
1	B	191	ALA	2.8
1	B	597	THR	2.5
1	B	246	PRO	2.5
1	B	252	LEU	2.5
1	B	186	ARG	2.5
1	B	193	LEU	2.5
1	B	598	VAL	2.4
1	B	508	ILE	2.4
1	A	58	SER	2.4
1	B	147	ILE	2.3

Continued on next page...

Continued from previous page...

Mol	Chain	Res	Type	RSRZ
1	B	139	ILE	2.3
1	B	339	SER	2.3
1	A	54	ALA	2.3
1	B	89	ASP	2.2
1	A	123	HIS	2.2
1	A	59	PRO	2.2
1	A	128	GLY	2.2
1	B	232	SER	2.2
1	B	57	ILE	2.2
1	A	60	ASN	2.1
1	B	126	ARG	2.1
1	B	52	ASP	2.1
1	B	512	LEU	2.1
1	B	469	ALA	2.0
1	B	333	ILE	2.0
1	A	2	ALA	2.0
1	B	514	LYS	2.0

6.2 Non-standard residues in protein, DNA, RNA chains [i](#)

There are no non-standard protein/DNA/RNA residues in this entry.

6.3 Carbohydrates [i](#)

There are no monosaccharides in this entry.

6.4 Ligands [i](#)

In the following table, the Atoms column lists the number of modelled atoms in the group and the number defined in the chemical component dictionary. The B-factors column lists the minimum, median, 95th percentile and maximum values of B factors of atoms in the group. The column labelled 'Q< 0.9' lists the number of atoms with occupancy less than 0.9.

Mol	Type	Chain	Res	Atoms	RSCC	RSR	B-factors(Å ²)	Q<0.9
2	THR	B	602	8/8	0.94	0.15	34,42,60,69	0
2	THR	B	601	8/8	0.97	0.14	22,47,52,56	0
2	THR	A	602	8/8	0.97	0.18	25,29,34,48	0
3	LYS	A	603	10/10	0.97	0.12	21,31,39,51	0
3	LYS	B	603	10/10	0.97	0.14	21,36,49,62	0
3	LYS	B	604	10/10	0.97	0.12	28,40,57,65	0

Continued on next page...

Continued from previous page...

Mol	Type	Chain	Res	Atoms	RSCC	RSR	B-factors(\AA^2)	Q<0.9
2	THR	A	601	8/8	0.98	0.12	26,37,48,52	0
3	LYS	A	604	10/10	0.98	0.18	21,26,42,48	0
4	SO4	A	605	5/5	0.99	0.13	35,39,40,40	5

6.5 Other polymers [i](#)

There are no such residues in this entry.