



wwPDB X-ray Structure Validation Summary Report

Oct 11, 2023 – 06:21 AM EDT

PDB ID : 7LAL
Title : CRYSTAL STRUCTURE OF MYELOPEROXIDASE SUBFORM C (MPO)
COMPLEX WITH COMPOUND-18 AKA 7-(3-(2,3-DIHYDRO-1H-INDEN-
1-YLAMINO)-1-PHENYLPROPYL)-1H-[1,2,3]TRIAZOLO[4,5-B]PYRIDIN-
5-AMINE
Authors : Khan, J.A.
Deposited on : 2021-01-06
Resolution : 2.75 Å(reported)

This is a wwPDB X-ray Structure Validation Summary Report for a publicly released PDB entry.

We welcome your comments at validation@mail.wwpdb.org

A user guide is available at

<https://www.wwpdb.org/validation/2017/XrayValidationReportHelp>

with specific help available everywhere you see the  symbol.

The types of validation reports are described at

<http://www.wwpdb.org/validation/2017/FAQs#types>.

The following versions of software and data (see [references](#) ①) were used in the production of this report:

MolProbity : 4.02b-467
Mogul : 1.8.5 (274361), CSD as541be (2020)
Xtrriage (Phenix) : 1.13
EDS : 2.35.1
buster-report : 1.1.7 (2018)
Percentile statistics : 20191225.v01 (using entries in the PDB archive December 25th 2019)
Refmac : 5.8.0158
CCP4 : 7.0.044 (Gargrove)
Ideal geometry (proteins) : Engh & Huber (2001)
Ideal geometry (DNA, RNA) : Parkinson et al. (1996)
Validation Pipeline (wwPDB-VP) : 2.35.1

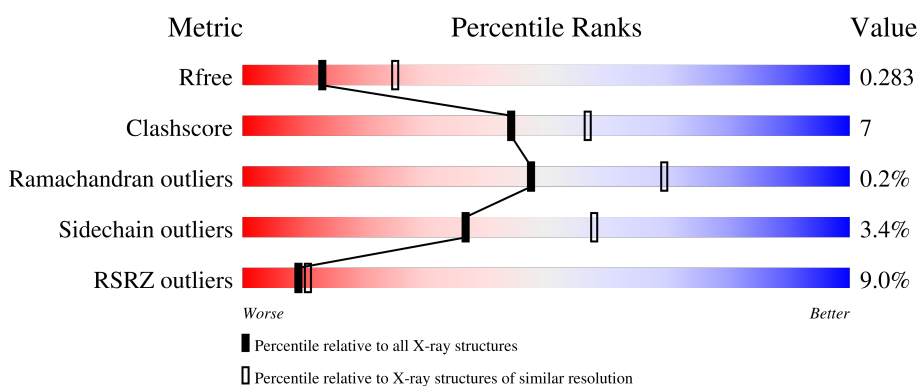
1 Overall quality at a glance

The following experimental techniques were used to determine the structure:

X-RAY DIFFRACTION

The reported resolution of this entry is 2.75 Å.

Percentile scores (ranging between 0-100) for global validation metrics of the entry are shown in the following graphic. The table shows the number of entries on which the scores are based.



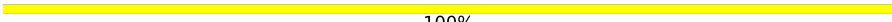
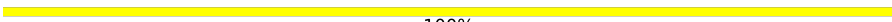
Metric	Whole archive (#Entries)	Similar resolution (#Entries, resolution range(Å))
R_{free}	130704	1235 (2.78-2.74)
Clashscore	141614	1277 (2.78-2.74)
Ramachandran outliers	138981	1257 (2.78-2.74)
Sidechain outliers	138945	1257 (2.78-2.74)
RSRZ outliers	127900	1207 (2.78-2.74)

The table below summarises the geometric issues observed across the polymeric chains and their fit to the electron density. The red, orange, yellow and green segments of the lower bar indicate the fraction of residues that contain outliers for ≥ 3 , 2, 1 and 0 types of geometric quality criteria respectively. A grey segment represents the fraction of residues that are not modelled. The numeric value for each fraction is indicated below the corresponding segment, with a dot representing fractions $\leq 5\%$. The upper red bar (where present) indicates the fraction of residues that have poor fit to the electron density. The numeric value is given above the bar.

Mol	Chain	Length	Quality of chain
1	A	105	
1	D	105	
2	B	466	
2	E	466	
3	C	2	

Continued on next page...

Continued from previous page...

Mol	Chain	Length	Quality of chain
4	F	4	 100%
4	G	4	 100%

2 Entry composition [i](#)

There are 11 unique types of molecules in this entry. The entry contains 9008 atoms, of which 0 are hydrogens and 0 are deuteriums.

In the tables below, the ZeroOcc column contains the number of atoms modelled with zero occupancy, the AltConf column contains the number of residues with at least one atom in alternate conformation and the Trace column contains the number of residues modelled with at most 2 atoms.

- Molecule 1 is a protein called Myeloperoxidase light chain.

Mol	Chain	Residues	Atoms					ZeroOcc	AltConf	Trace
			Total	C	N	O	S			
1	A	103	796	506	137	148	5	0	0	0
1	D	104	815	517	143	150	5	0	0	0

- Molecule 2 is a protein called Isoform H14 of Myeloperoxidase.

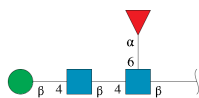
Mol	Chain	Residues	Atoms					ZeroOcc	AltConf	Trace
			Total	C	N	O	S			
2	B	464	3422	2147	621	630	24	5	0	0
2	E	465	3642	2304	651	660	27	33	0	0

- Molecule 3 is an oligosaccharide called 2-acetamido-2-deoxy-beta-D-glucopyranose-(1-4)-2-acetamido-2-deoxy-beta-D-glucopyranose.



Mol	Chain	Residues	Atoms				ZeroOcc	AltConf	Trace
			Total	C	N	O			
3	C	2	28	16	2	10	0	0	0

- Molecule 4 is an oligosaccharide called beta-D-mannopyranose-(1-4)-2-acetamido-2-deoxy-beta-D-glucopyranose-(1-4)-[alpha-L-fucopyranose-(1-6)]2-acetamido-2-deoxy-beta-D-glucopyranose.

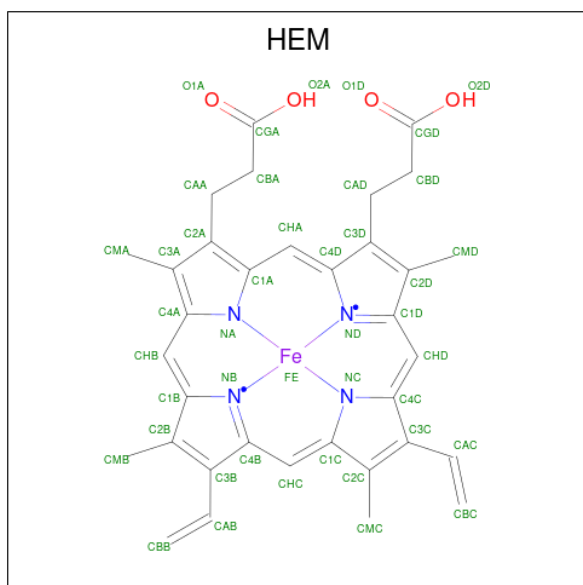


Mol	Chain	Residues	Atoms				ZeroOcc	AltConf	Trace
4	F	4	Total	C	N	O	0	0	0
			49	28	2	19			
4	G	4	Total	C	N	O	0	0	0
			49	28	2	19			

- Molecule 5 is CHLORIDE ION (three-letter code: CL) (formula: Cl).

Mol	Chain	Residues	Atoms		ZeroOcc	AltConf
5	A	1	Total	Cl	0	0
			1	1		

- Molecule 6 is PROTOPORPHYRIN IX CONTAINING FE (three-letter code: HEM) (formula: C₃₄H₃₂FeN₄O₄).



Mol	Chain	Residues	Atoms					ZeroOcc	AltConf
6	B	1	Total	C	Fe	N	O	0	0
			43	34	1	4	4		
6	E	1	Total	C	Fe	N	O	0	0
			43	34	1	4	4		

- Molecule 7 is alpha-D-mannopyranose (three-letter code: MAN) (formula: C₆H₁₂O₆).



Mol	Chain	Residues	Atoms	ZeroOcc	AltConf
7	B	1	Total C O 11 6 5	0	0
7	B	1	Total C O 11 6 5	0	0
7	E	1	Total C O 11 6 5	0	0
7	E	1	Total C O 11 6 5	0	0

- Molecule 8 is CALCIUM ION (three-letter code: CA) (formula: Ca).

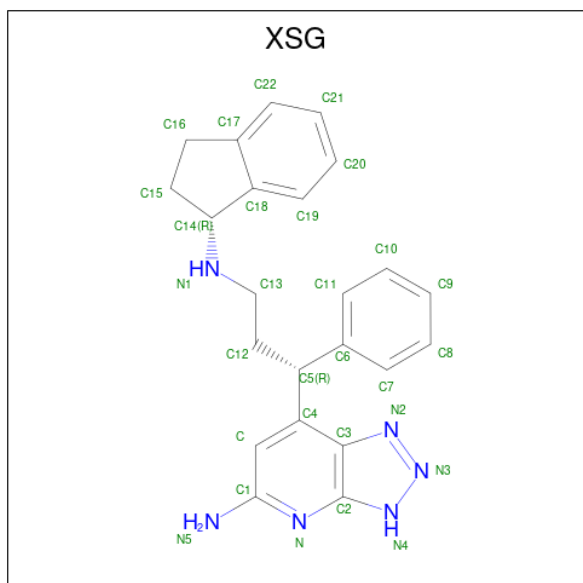
Mol	Chain	Residues	Atoms	ZeroOcc	AltConf
8	B	1	Total Ca 1 1	0	0
8	E	1	Total Ca 1 1	0	0

- Molecule 9 is 2-acetamido-2-deoxy-beta-D-glucopyranose (three-letter code: NAG) (formula: C₈H₁₅NO₆).



Mol	Chain	Residues	Atoms				ZeroOcc	AltConf
9	E	1	Total	C	N	O	0	0
			14	8	1	5		
9	E	1	Total	C	N	O	0	0
			14	8	1	5		
9	E	1	Total	C	N	O	0	0
			14	8	1	5		

- Molecule 10 is 7-[(1R)-3-[(1R)-2,3-dihydro-1H-inden-1-yl]amino]-1-phenylpropyl]-3H-[1,2,3]triazolo[4,5-b]pyridin-5-amine (three-letter code: XSG) (formula: C₂₃H₂₄N₆) (labeled as "Ligand of Interest" by depositor).



Mol	Chain	Residues	Atoms			ZeroOcc	AltConf
10	E	1	Total	C	N	0	0
			29	23	6		

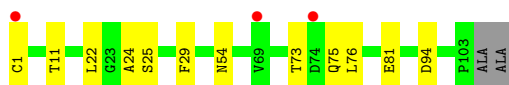
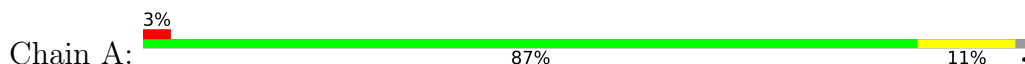
- Molecule 11 is water.

Mol	Chain	Residues	Atoms		ZeroOcc	AltConf
11	D	2	Total	O	0	0
			2	2		
11	E	1	Total	O	0	0
			1	1		

3 Residue-property plots [i](#)

These plots are drawn for all protein, RNA, DNA and oligosaccharide chains in the entry. The first graphic for a chain summarises the proportions of the various outlier classes displayed in the second graphic. The second graphic shows the sequence view annotated by issues in geometry and electron density. Residues are color-coded according to the number of geometric quality criteria for which they contain at least one outlier: green = 0, yellow = 1, orange = 2 and red = 3 or more. A red dot above a residue indicates a poor fit to the electron density ($RSRZ > 2$). Stretches of 2 or more consecutive residues without any outlier are shown as a green connector. Residues present in the sample, but not in the model, are shown in grey.

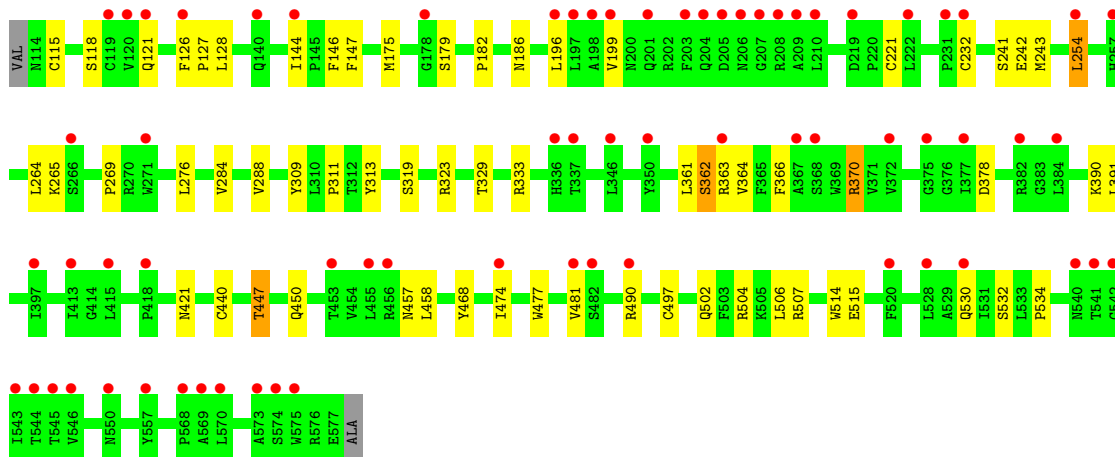
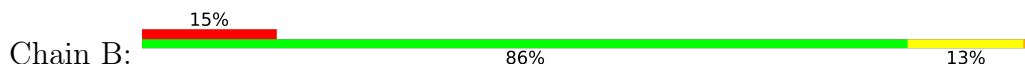
- Molecule 1: Myeloperoxidase light chain



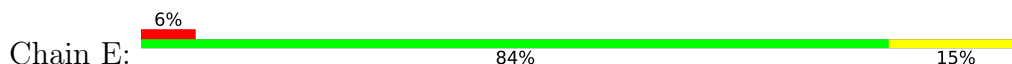
- Molecule 1: Myeloperoxidase light chain

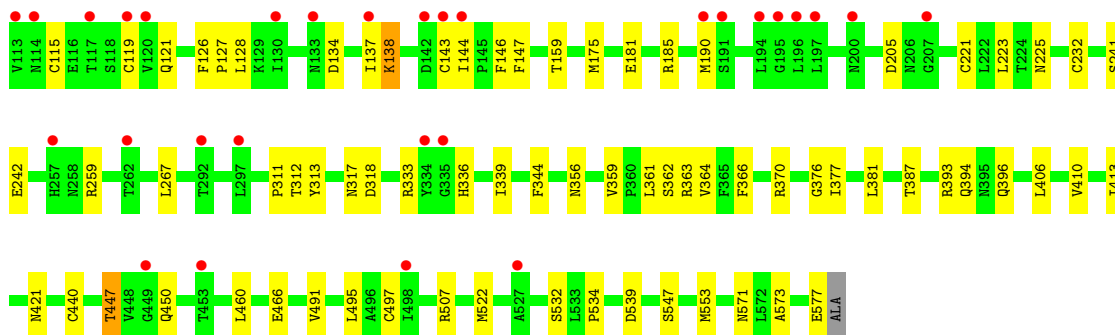


- Molecule 2: Isoform H14 of Myeloperoxidase



- Molecule 2: Isoform H14 of Myeloperoxidase





- Molecule 3: 2-acetamido-2-deoxy-beta-D-glucopyranose-(1-4)-2-acetamido-2-deoxy-beta-D-glucopyranose

Chain C: 100%

MAG1
MAG2

- Molecule 4: beta-D-mannopyranose-(1-4)-2-acetamido-2-deoxy-beta-D-glucopyranose-(1-4)-[alpha-L-fucopyranose-(1-6)]2-acetamido-2-deoxy-beta-D-glucopyranose

Chain F: 100%

MAG1
MAG2
BMA3
FUC4

- Molecule 4: beta-D-mannopyranose-(1-4)-2-acetamido-2-deoxy-beta-D-glucopyranose-(1-4)-[alpha-L-fucopyranose-(1-6)]2-acetamido-2-deoxy-beta-D-glucopyranose

Chain G: 100%

MAG1
MAG2
BMA3
FUC4

4 Data and refinement statistics

Property	Value	Source
Space group	P 43 21 2	Depositor
Cell constants a, b, c, α , β , γ	107.72Å 107.72Å 239.74Å 90.00° 90.00° 90.00°	Depositor
Resolution (Å)	38.93 – 2.75 47.10 – 2.75	Depositor EDS
% Data completeness (in resolution range)	99.7 (38.93-2.75) 100.0 (47.10-2.75)	Depositor EDS
R_{merge}	0.06	Depositor
R_{sym}	(Not available)	Depositor
$\langle I/\sigma(I) \rangle$ ¹	3.93 (at 2.77Å)	Xtrriage
Refinement program	BUSTER 2.11.2	Depositor
R, R_{free}	0.227 , 0.270 0.244 , 0.283	Depositor DCC
R_{free} test set	1873 reflections (5.00%)	wwPDB-VP
Wilson B-factor (Å ²)	66.9	Xtrriage
Anisotropy	0.453	Xtrriage
Bulk solvent k_{sol} (e/Å ³), B_{sol} (Å ²)	0.27 , 65.7	EDS
L-test for twinning ²	$\langle L \rangle = 0.48$, $\langle L^2 \rangle = 0.31$	Xtrriage
Estimated twinning fraction	No twinning to report.	Xtrriage
F_o, F_c correlation	0.91	EDS
Total number of atoms	9008	wwPDB-VP
Average B, all atoms (Å ²)	90.0	wwPDB-VP

Xtrriage's analysis on translational NCS is as follows: *The largest off-origin peak in the Patterson function is 2.49% of the height of the origin peak. No significant pseudotranslation is detected.*

¹Intensities estimated from amplitudes.

²Theoretical values of $\langle |L| \rangle$, $\langle L^2 \rangle$ for acentric reflections are 0.5, 0.333 respectively for untwinned datasets, and 0.375, 0.2 for perfectly twinned datasets.

5 Model quality [i](#)

5.1 Standard geometry [i](#)

Bond lengths and bond angles in the following residue types are not validated in this section: XSG, HEM, NAG, MAN, BMA, FUC, CL, CA

The Z score for a bond length (or angle) is the number of standard deviations the observed value is removed from the expected value. A bond length (or angle) with $|Z| > 5$ is considered an outlier worth inspection. RMSZ is the root-mean-square of all Z scores of the bond lengths (or angles).

Mol	Chain	Bond lengths		Bond angles	
		RMSZ	# Z >5	RMSZ	# Z >5
1	A	0.51	0/821	0.74	0/1123
1	D	0.54	0/840	0.75	0/1148
2	B	0.51	0/3503	0.69	0/4782
2	E	0.52	0/3727	0.70	0/5070
All	All	0.52	0/8891	0.71	0/12123

There are no bond length outliers.

There are no bond angle outliers.

There are no chirality outliers.

There are no planarity outliers.

5.2 Too-close contacts [i](#)

In the following table, the Non-H and H(model) columns list the number of non-hydrogen atoms and hydrogen atoms in the chain respectively. The H(added) column lists the number of hydrogen atoms added and optimized by MolProbity. The Clashes column lists the number of clashes within the asymmetric unit, whereas Symm-Clashes lists symmetry-related clashes.

Mol	Chain	Non-H	H(model)	H(added)	Clashes	Symm-Clashes
1	A	796	0	725	11	0
1	D	815	0	761	6	0
2	B	3422	0	3108	42	0
2	E	3642	0	3556	41	0
3	C	28	0	25	0	0
4	F	49	0	43	4	0
4	G	49	0	42	4	0
5	A	1	0	0	0	0
6	B	43	0	30	9	0

Continued on next page...

Continued from previous page...

Mol	Chain	Non-H	H(model)	H(added)	Clashes	Symm-Clashes
6	E	43	0	30	9	0
7	B	22	0	20	2	0
7	E	22	0	20	4	0
8	B	1	0	0	0	0
8	E	1	0	0	0	0
9	E	42	0	38	2	0
10	E	29	0	0	0	0
11	D	2	0	0	0	0
11	E	1	0	0	0	0
All	All	9008	0	8398	103	0

The all-atom clashscore is defined as the number of clashes found per 1000 atoms (including hydrogen atoms). The all-atom clashscore for this structure is 7.

The worst 5 of 103 close contacts within the same asymmetric unit are listed below, sorted by their clash magnitude.

Atom-1	Atom-2	Interatomic distance (Å)	Clash overlap (Å)
2:E:317:ASN:HD21	4:G:1:NAG:C1	1.38	1.34
2:E:317:ASN:ND2	4:G:1:NAG:C1	2.14	1.11
7:E:601:MAN:C1	4:F:3:BMA:O3	2.10	0.99
2:E:242:GLU:OE2	6:E:603:HEM:HMB1	1.67	0.95
2:E:225:ASN:HD21	9:E:605:NAG:C1	1.79	0.94

There are no symmetry-related clashes.

5.3 Torsion angles [i](#)

5.3.1 Protein backbone [i](#)

In the following table, the Percentiles column shows the percent Ramachandran outliers of the chain as a percentile score with respect to all X-ray entries followed by that with respect to entries of similar resolution.

The Analysed column shows the number of residues for which the backbone conformation was analysed, and the total number of residues.

Mol	Chain	Analysed	Favoured	Allowed	Outliers	Percentiles
1	A	101/105 (96%)	97 (96%)	3 (3%)	1 (1%)	15 27
1	D	102/105 (97%)	98 (96%)	4 (4%)	0	100 100

Continued on next page...

Continued from previous page...

Mol	Chain	Analysed	Favoured	Allowed	Outliers	Percentiles
2	B	462/466 (99%)	440 (95%)	21 (4%)	1 (0%)	47 69
2	E	463/466 (99%)	442 (96%)	21 (4%)	0	100 100
All	All	1128/1142 (99%)	1077 (96%)	49 (4%)	2 (0%)	47 69

All (2) Ramachandran outliers are listed below:

Mol	Chain	Res	Type
1	A	75	GLN
2	B	457	ASN

5.3.2 Protein sidechains [i](#)

In the following table, the Percentiles column shows the percent sidechain outliers of the chain as a percentile score with respect to all X-ray entries followed by that with respect to entries of similar resolution.

The Analysed column shows the number of residues for which the sidechain conformation was analysed, and the total number of residues.

Mol	Chain	Analysed	Rotameric	Outliers	Percentiles
1	A	80/90 (89%)	77 (96%)	3 (4%)	33 53
1	D	84/90 (93%)	81 (96%)	3 (4%)	35 55
2	B	327/411 (80%)	316 (97%)	11 (3%)	37 58
2	E	388/411 (94%)	375 (97%)	13 (3%)	37 58
All	All	879/1002 (88%)	849 (97%)	30 (3%)	37 58

5 of 30 residues with a non-rotameric sidechain are listed below:

Mol	Chain	Res	Type
1	D	1	CYS
2	E	522	MET
2	E	138	LYS
2	E	577	GLU
2	E	362	SER

Sometimes sidechains can be flipped to improve hydrogen bonding and reduce clashes. 5 of 10 such sidechains are listed below:

Mol	Chain	Res	Type
2	E	317	ASN
2	E	421	ASN
2	E	563	ASN
2	B	530	GLN
2	B	563	ASN

5.3.3 RNA [i](#)

There are no RNA molecules in this entry.

5.4 Non-standard residues in protein, DNA, RNA chains [i](#)

There are no non-standard protein/DNA/RNA residues in this entry.

5.5 Carbohydrates [i](#)

10 monosaccharides are modelled in this entry.

In the following table, the Counts columns list the number of bonds (or angles) for which Mogul statistics could be retrieved, the number of bonds (or angles) that are observed in the model and the number of bonds (or angles) that are defined in the Chemical Component Dictionary. The Link column lists molecule types, if any, to which the group is linked. The Z score for a bond length (or angle) is the number of standard deviations the observed value is removed from the expected value. A bond length (or angle) with $|Z| > 2$ is considered an outlier worth inspection. RMSZ is the root-mean-square of all Z scores of the bond lengths (or angles).

Mol	Type	Chain	Res	Link	Bond lengths			Bond angles		
					Counts	RMSZ	$\# Z > 2$	Counts	RMSZ	$\# Z > 2$
3	NAG	C	1	2,3	14,14,15	0.26	0	17,19,21	0.90	1 (5%)
3	NAG	C	2	3	14,14,15	0.34	0	17,19,21	1.56	3 (17%)
4	NAG	F	1	4	14,14,15	0.31	0	17,19,21	0.93	1 (5%)
4	NAG	F	2	4	14,14,15	0.32	0	17,19,21	1.11	1 (5%)
4	BMA	F	3	4	11,11,12	0.23	0	15,15,17	0.48	0
4	FUC	F	4	4	10,10,11	0.57	0	14,14,16	1.02	2 (14%)
4	NAG	G	1	4	14,14,15	0.33	0	17,19,21	0.53	0
4	NAG	G	2	4	14,14,15	0.33	0	17,19,21	1.25	2 (11%)
4	BMA	G	3	4	11,11,12	0.34	0	15,15,17	0.65	0
4	FUC	G	4	4	10,10,11	0.51	0	14,14,16	0.86	1 (7%)

In the following table, the Chirals column lists the number of chiral outliers, the number of chiral centers analysed, the number of these observed in the model and the number defined in the

Chemical Component Dictionary. Similar counts are reported in the Torsion and Rings columns. '-' means no outliers of that kind were identified.

Mol	Type	Chain	Res	Link	Chirals	Torsions	Rings
3	NAG	C	1	2,3	-	2/6/23/26	0/1/1/1
3	NAG	C	2	3	-	1/6/23/26	0/1/1/1
4	NAG	F	1	4	-	0/6/23/26	0/1/1/1
4	NAG	F	2	4	-	3/6/23/26	0/1/1/1
4	BMA	F	3	4	-	2/2/19/22	0/1/1/1
4	FUC	F	4	4	-	-	0/1/1/1
4	NAG	G	1	4	-	0/6/23/26	0/1/1/1
4	NAG	G	2	4	-	4/6/23/26	0/1/1/1
4	BMA	G	3	4	-	2/2/19/22	0/1/1/1
4	FUC	G	4	4	-	-	0/1/1/1

There are no bond length outliers.

The worst 5 of 11 bond angle outliers are listed below:

Mol	Chain	Res	Type	Atoms	Z	Observed(°)	Ideal(°)
3	C	2	NAG	O5-C1-C2	-4.59	104.04	111.29
4	G	2	NAG	C1-O5-C5	3.73	117.24	112.19
4	F	2	NAG	C1-O5-C5	3.56	117.02	112.19
3	C	1	NAG	O5-C1-C2	3.12	116.22	111.29
3	C	2	NAG	C3-C4-C5	2.93	115.47	110.24

There are no chirality outliers.

5 of 14 torsion outliers are listed below:

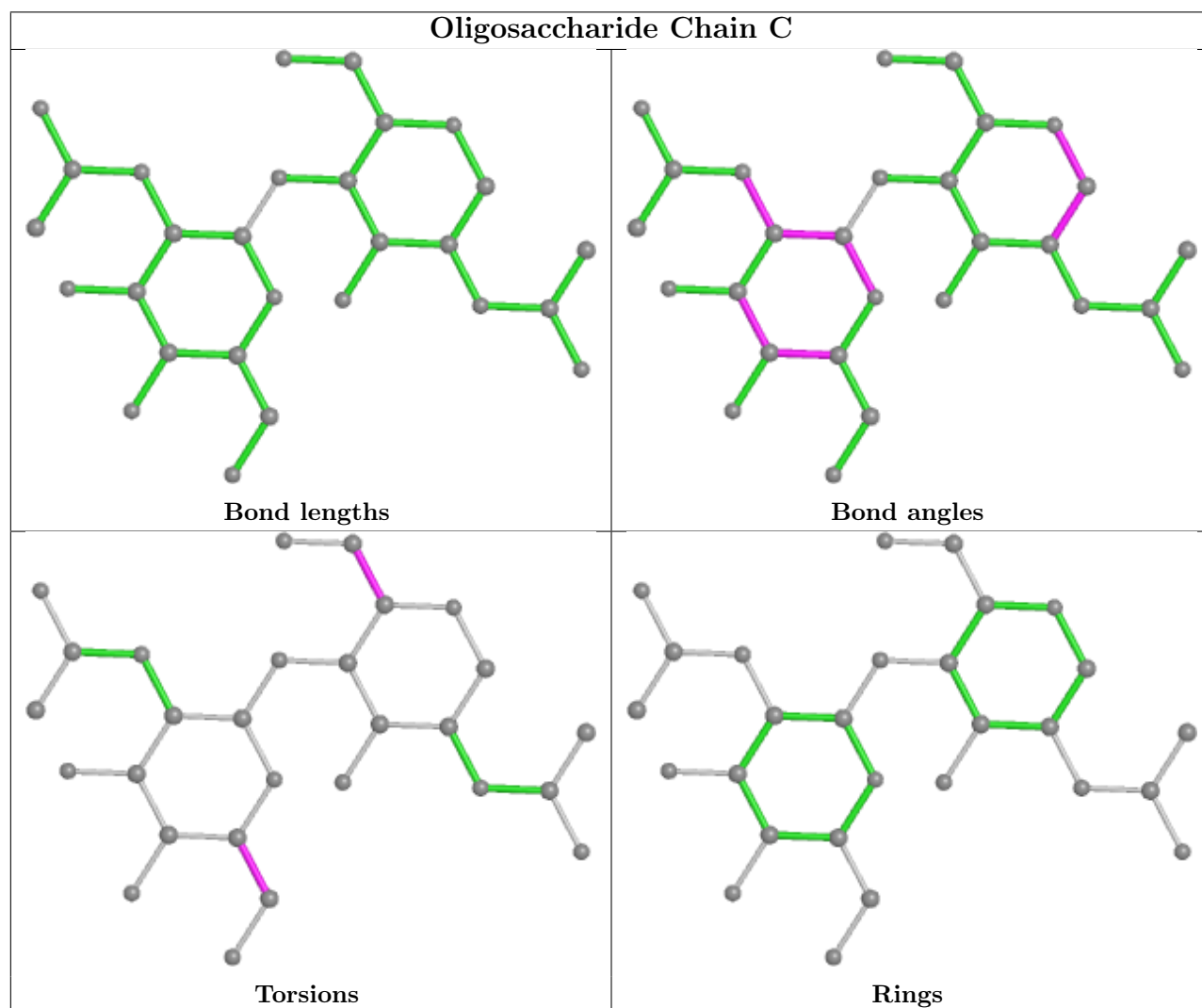
Mol	Chain	Res	Type	Atoms
4	G	3	BMA	C4-C5-C6-O6
4	F	3	BMA	C4-C5-C6-O6
4	F	3	BMA	O5-C5-C6-O6
4	G	3	BMA	O5-C5-C6-O6
3	C	1	NAG	O5-C5-C6-O6

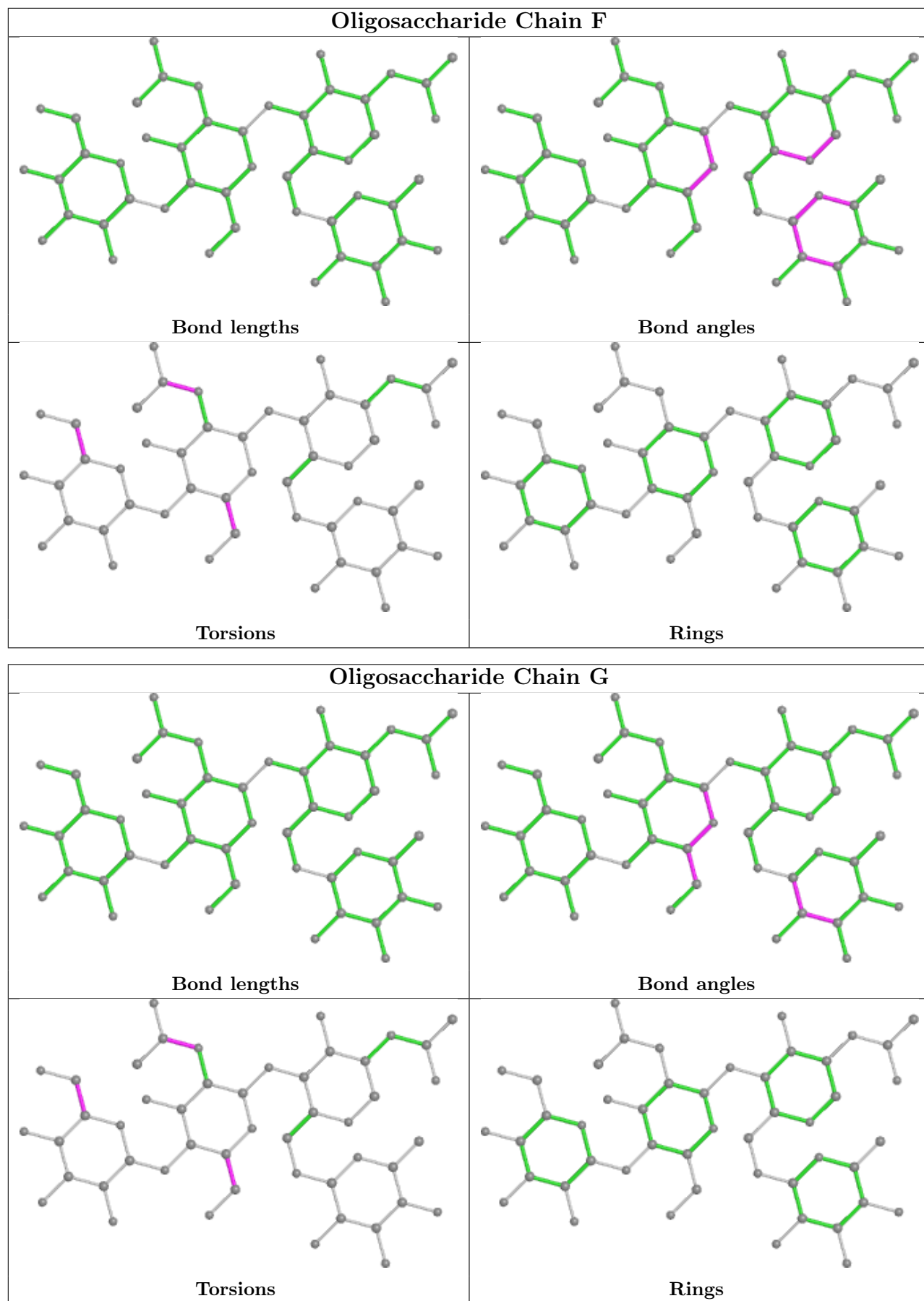
There are no ring outliers.

3 monomers are involved in 8 short contacts:

Mol	Chain	Res	Type	Clashes	Symm-Clashes
4	G	1	NAG	2	0
4	F	3	BMA	4	0
4	G	3	BMA	2	0

The following is a two-dimensional graphical depiction of Mogul quality analysis of bond lengths, bond angles, torsion angles, and ring geometry for oligosaccharide.





5.6 Ligand geometry

Of 13 ligands modelled in this entry, 3 are monoatomic - leaving 10 for Mogul analysis.

In the following table, the Counts columns list the number of bonds (or angles) for which Mogul statistics could be retrieved, the number of bonds (or angles) that are observed in the model and the number of bonds (or angles) that are defined in the Chemical Component Dictionary. The Link column lists molecule types, if any, to which the group is linked. The Z score for a bond length (or angle) is the number of standard deviations the observed value is removed from the expected value. A bond length (or angle) with $|Z| > 2$ is considered an outlier worth inspection. RMSZ is the root-mean-square of all Z scores of the bond lengths (or angles).

Mol	Type	Chain	Res	Link	Bond lengths			Bond angles		
					Counts	RMSZ	# Z > 2	Counts	RMSZ	# Z > 2
7	MAN	B	602	-	11,11,12	0.36	0	15,15,17	0.83	0
7	MAN	B	603	-	11,11,12	0.30	0	15,15,17	0.83	0
10	XSG	E	608	-	31,33,33	1.54	3 (9%)	32,46,46	0.89	1 (3%)
9	NAG	E	605	-	14,14,15	0.35	0	17,19,21	1.01	1 (5%)
9	NAG	E	606	-	14,14,15	0.25	0	17,19,21	0.74	0
6	HEM	B	601	2	41,50,50	1.43	7 (17%)	45,82,82	2.08	14 (31%)
7	MAN	E	601	-	11,11,12	0.31	0	15,15,17	0.96	1 (6%)
7	MAN	E	602	-	11,11,12	0.35	0	15,15,17	0.82	0
9	NAG	E	604	2	14,14,15	0.33	0	17,19,21	0.82	1 (5%)
6	HEM	E	603	2	41,50,50	1.56	6 (14%)	45,82,82	2.28	24 (53%)

In the following table, the Chirals column lists the number of chiral outliers, the number of chiral centers analysed, the number of these observed in the model and the number defined in the Chemical Component Dictionary. Similar counts are reported in the Torsion and Rings columns. '-' means no outliers of that kind were identified.

Mol	Type	Chain	Res	Link	Chirals	Torsions	Rings
7	MAN	B	602	-	-	2/2/19/22	0/1/1/1
7	MAN	B	603	-	-	0/2/19/22	0/1/1/1
10	XSG	E	608	-	-	2/14/23/23	0/5/5/5
9	NAG	E	605	-	-	0/6/23/26	0/1/1/1
9	NAG	E	606	-	-	0/6/23/26	0/1/1/1
6	HEM	B	601	2	-	6/12/54/54	-
7	MAN	E	601	-	-	1/2/19/22	0/1/1/1
7	MAN	E	602	-	-	0/2/19/22	0/1/1/1
9	NAG	E	604	2	-	2/6/23/26	0/1/1/1
6	HEM	E	603	2	-	6/12/54/54	-

The worst 5 of 16 bond length outliers are listed below:

Mol	Chain	Res	Type	Atoms	Z	Observed(Å)	Ideal(Å)
10	E	608	XSG	C2-N4	6.88	1.45	1.34
6	B	601	HEM	C4D-ND	-4.52	1.32	1.40
6	E	603	HEM	C4D-ND	-4.22	1.33	1.40
6	E	603	HEM	C3D-C2D	-4.16	1.27	1.36
6	B	601	HEM	C3D-C2D	-3.30	1.29	1.36

The worst 5 of 42 bond angle outliers are listed below:

Mol	Chain	Res	Type	Atoms	Z	Observed(°)	Ideal(°)
6	B	601	HEM	CMD-C2D-C1D	5.07	132.76	125.04
6	E	603	HEM	CBA-CAA-C2A	-4.99	104.10	112.62
6	E	603	HEM	CMD-C2D-C1D	4.54	131.95	125.04
6	B	601	HEM	CHA-C4D-ND	4.29	129.68	124.38
6	B	601	HEM	CBA-CAA-C2A	-4.11	105.61	112.62

There are no chirality outliers.

5 of 19 torsion outliers are listed below:

Mol	Chain	Res	Type	Atoms
6	E	603	HEM	C2B-C3B-CAB-CBB
10	E	608	XSG	C18-C14-N1-C13
7	B	602	MAN	O5-C5-C6-O6
7	B	602	MAN	C4-C5-C6-O6
9	E	604	NAG	C4-C5-C6-O6

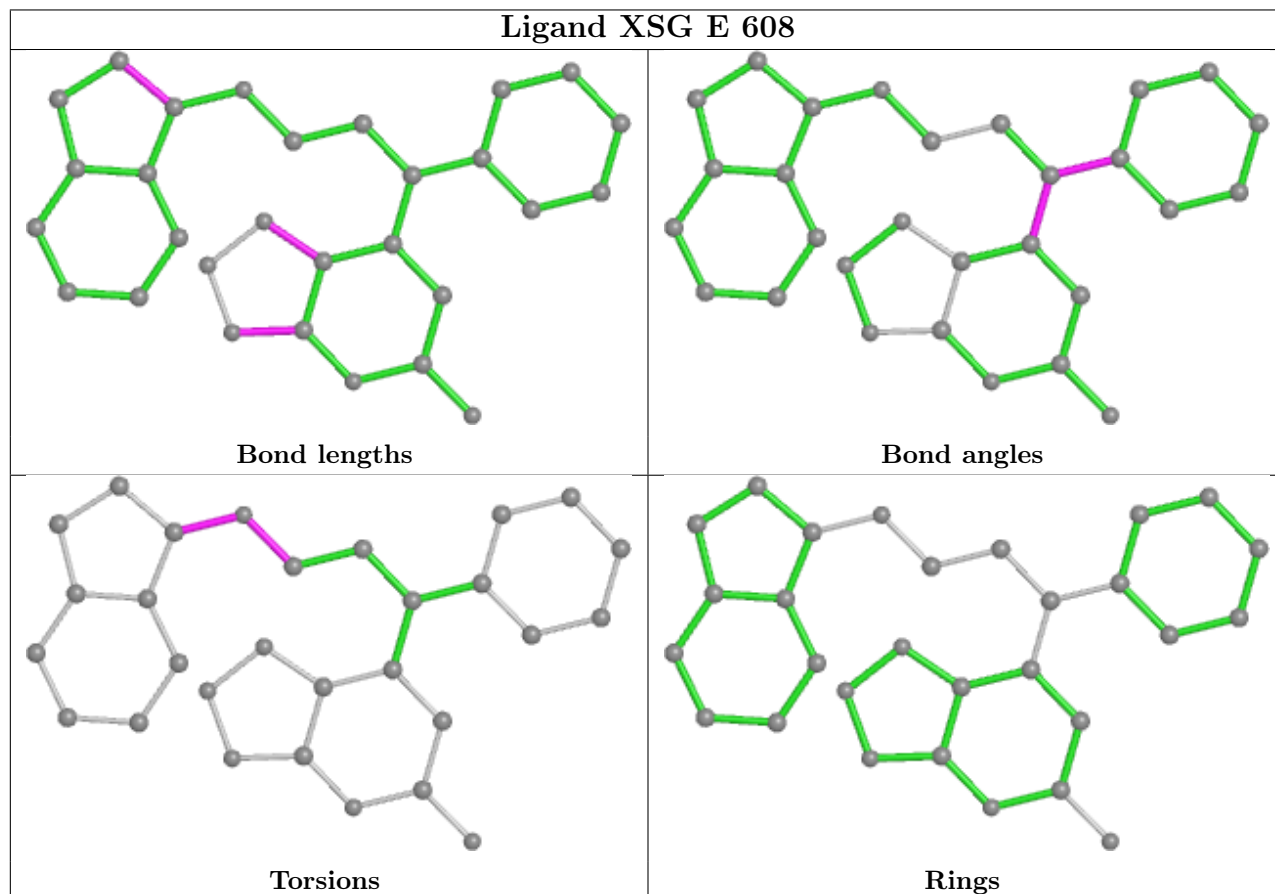
There are no ring outliers.

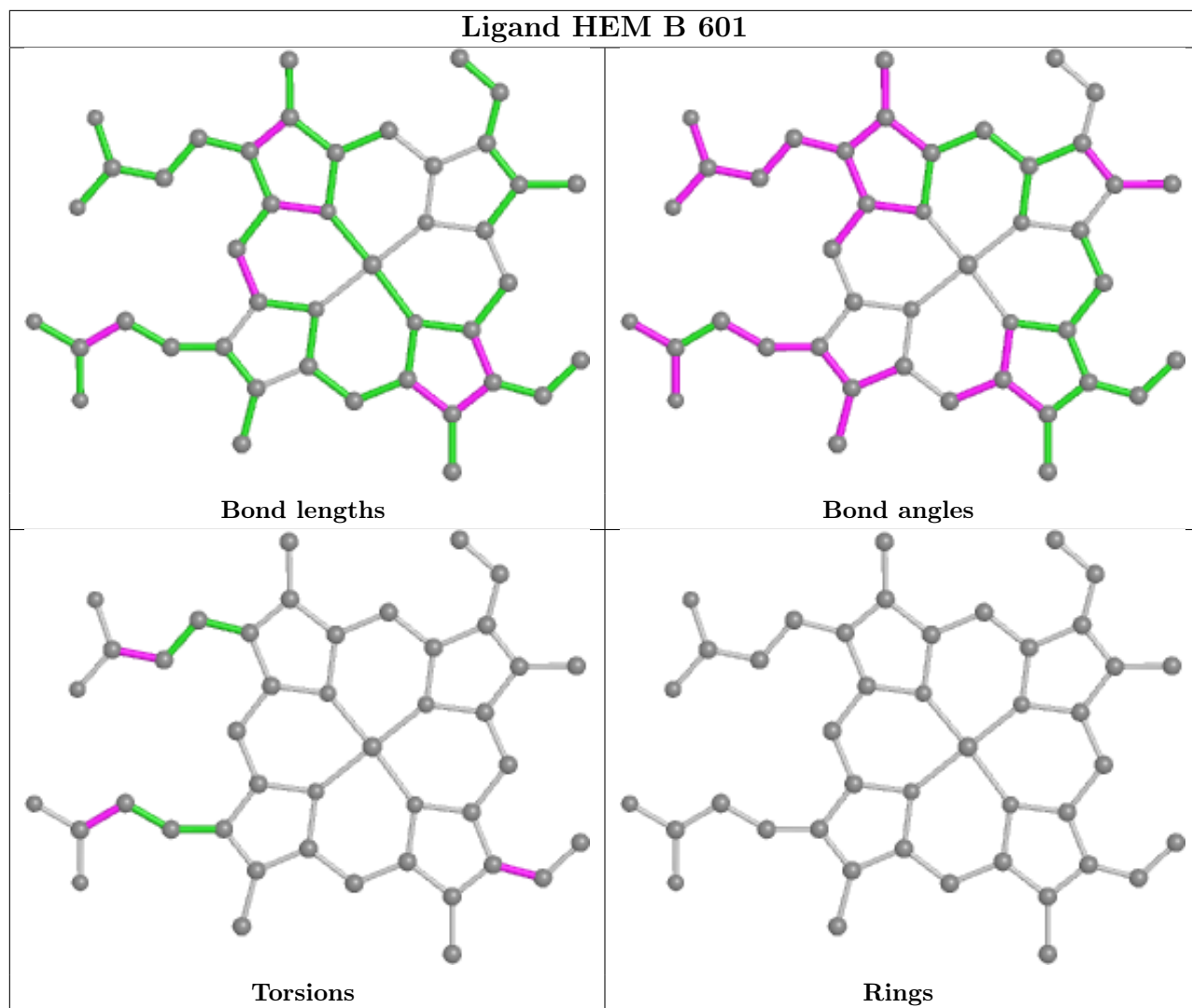
6 monomers are involved in 26 short contacts:

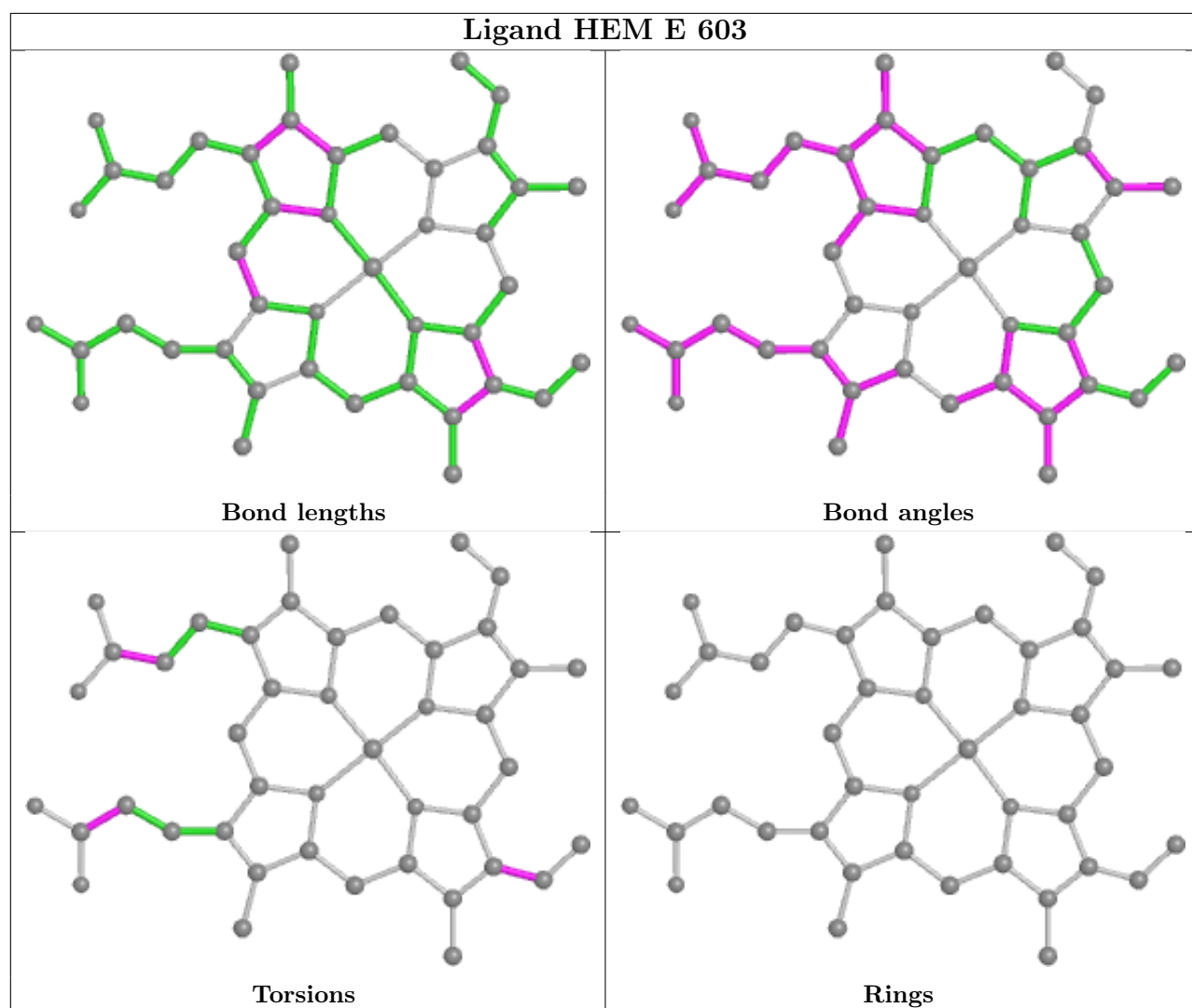
Mol	Chain	Res	Type	Clashes	Symm-Clashes
7	B	603	MAN	2	0
9	E	605	NAG	2	0
6	B	601	HEM	9	0
7	E	601	MAN	2	0
7	E	602	MAN	2	0
6	E	603	HEM	9	0

The following is a two-dimensional graphical depiction of Mogul quality analysis of bond lengths, bond angles, torsion angles, and ring geometry for all instances of the Ligand of Interest. In addition, ligands with molecular weight > 250 and outliers as shown on the validation Tables will also be included. For torsion angles, if less than 5% of the Mogul distribution of torsion angles is within 10 degrees of the torsion angle in question, then that torsion angle is considered an outlier. Any bond that is central to one or more torsion angles identified as an outlier by Mogul will be

highlighted in the graph. For rings, the root-mean-square deviation (RMSD) between the ring in question and similar rings identified by Mogul is calculated over all ring torsion angles. If the average RMSD is greater than 60 degrees and the minimal RMSD between the ring in question and any Mogul-identified rings is also greater than 60 degrees, then that ring is considered an outlier. The outliers are highlighted in purple. The color gray indicates Mogul did not find sufficient equivalents in the CSD to analyse the geometry.







5.7 Other polymers [i](#)

There are no such residues in this entry.

5.8 Polymer linkage issues [i](#)

There are no chain breaks in this entry.

6 Fit of model and data [i](#)

6.1 Protein, DNA and RNA chains [i](#)

In the following table, the column labelled ‘#RSRZ> 2’ contains the number (and percentage) of RSRZ outliers, followed by percent RSRZ outliers for the chain as percentile scores relative to all X-ray entries and entries of similar resolution. The OWAB column contains the minimum, median, 95th percentile and maximum values of the occupancy-weighted average B-factor per residue. The column labelled ‘Q< 0.9’ lists the number of (and percentage) of residues with an average occupancy less than 0.9.

Mol	Chain	Analysed	<RSRZ>	#RSRZ>2	OWAB(Å ²)	Q<0.9
1	A	103/105 (98%)	0.28	3 (2%) 51 61	49, 80, 134, 153	0
1	D	104/105 (99%)	-0.02	1 (0%) 82 87	45, 69, 95, 109	0
2	B	464/466 (99%)	0.76	69 (14%) 2 2	53, 104, 178, 216	2 (0%)
2	E	465/466 (99%)	0.28	29 (6%) 20 25	45, 79, 110, 139	11 (2%)
All	All	1136/1142 (99%)	0.45	102 (8%) 9 11	45, 86, 150, 216	13 (1%)

The worst 5 of 102 RSRZ outliers are listed below:

Mol	Chain	Res	Type	RSRZ
2	B	209	ALA	8.8
2	B	198	ALA	6.9
2	B	384	LEU	6.7
2	B	545	THR	6.1
2	B	210	LEU	5.5

6.2 Non-standard residues in protein, DNA, RNA chains [i](#)

There are no non-standard protein/DNA/RNA residues in this entry.

6.3 Carbohydrates [i](#)

In the following table, the Atoms column lists the number of modelled atoms in the group and the number defined in the chemical component dictionary. The B-factors column lists the minimum, median, 95th percentile and maximum values of B factors of atoms in the group. The column labelled ‘Q< 0.9’ lists the number of atoms with occupancy less than 0.9.

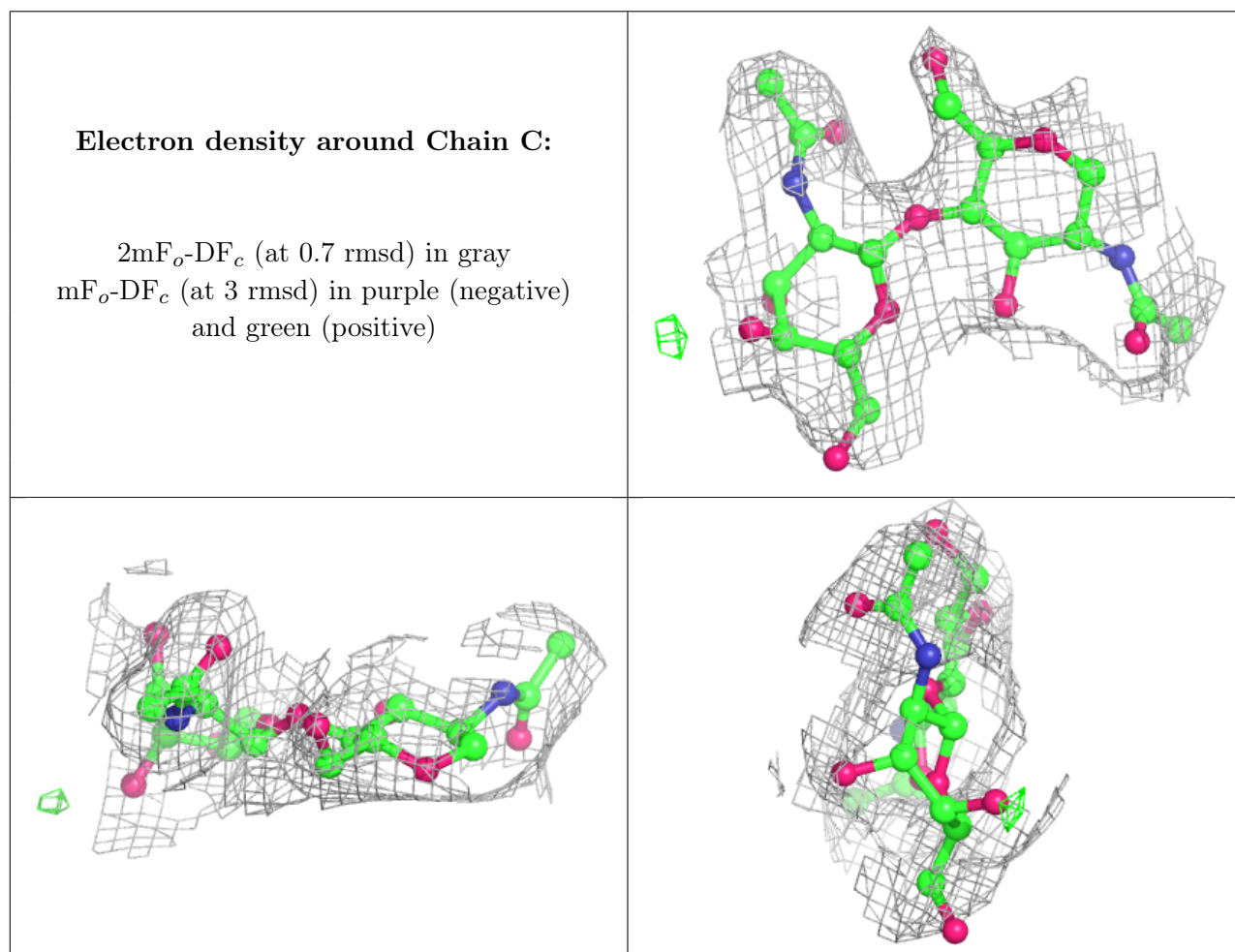
Mol	Type	Chain	Res	Atoms	RSCC	RSR	B-factors(Å ²)	Q<0.9
3	NAG	C	2	14/15	0.79	0.21	136,147,157,159	0
3	NAG	C	1	14/15	0.81	0.19	124,126,131,138	0

Continued on next page...

Continued from previous page...

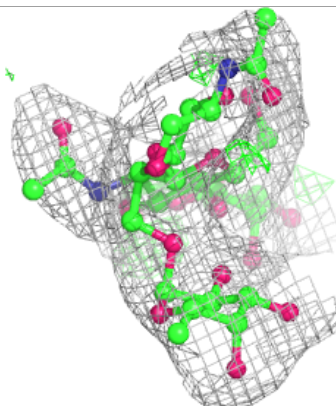
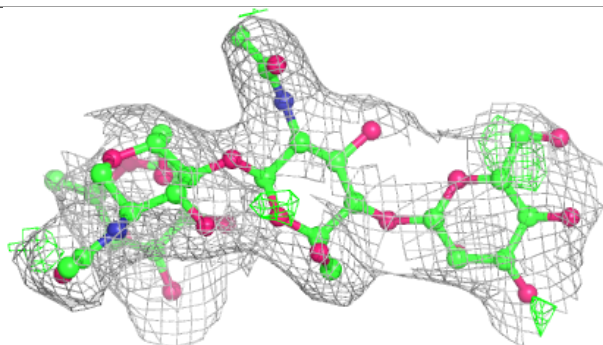
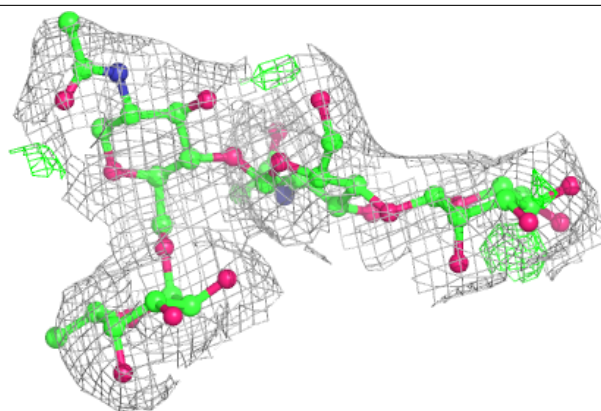
Mol	Type	Chain	Res	Atoms	RSCC	RSR	B-factors(\AA^2)	Q<0.9
4	BMA	F	3	11/12	0.87	0.25	87,89,93,97	0
4	BMA	G	3	11/12	0.93	0.22	89,100,104,109	0
4	NAG	F	1	14/15	0.94	0.19	72,79,86,88	0
4	FUC	F	4	10/11	0.95	0.23	82,86,91,96	0
4	NAG	F	2	14/15	0.95	0.20	61,68,77,79	0
4	NAG	G	2	14/15	0.97	0.17	51,65,73,76	0
4	NAG	G	1	14/15	0.97	0.17	58,65,75,77	0
4	FUC	G	4	10/11	0.97	0.18	57,69,72,72	0

The following is a graphical depiction of the model fit to experimental electron density for oligosaccharide. Each fit is shown from different orientation to approximate a three-dimensional view.

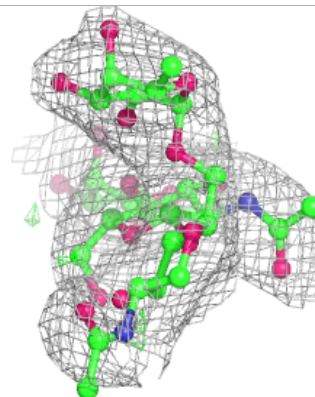
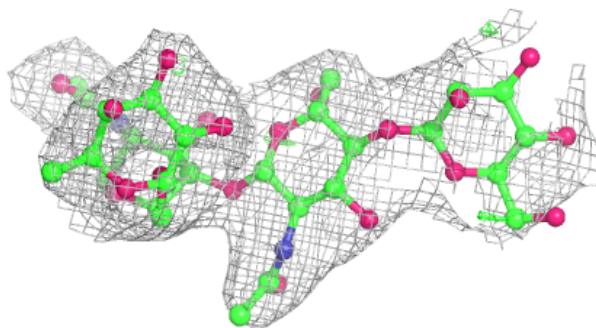
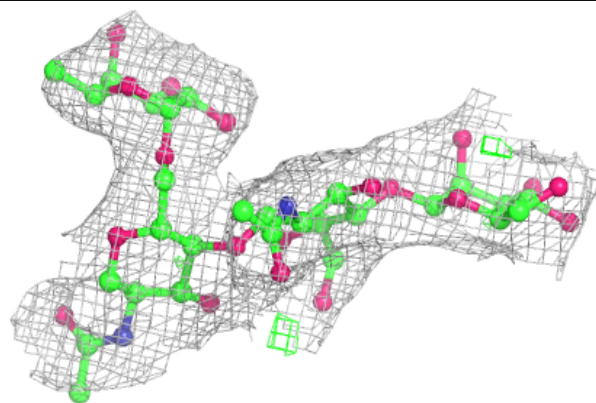


Electron density around Chain F:

$2mF_o-DF_c$ (at 0.7 rmsd) in gray
 mF_o-DF_c (at 3 rmsd) in purple (negative)
and green (positive)

**Electron density around Chain G:**

$2mF_o-DF_c$ (at 0.7 rmsd) in gray
 mF_o-DF_c (at 3 rmsd) in purple (negative)
and green (positive)



6.4 Ligands

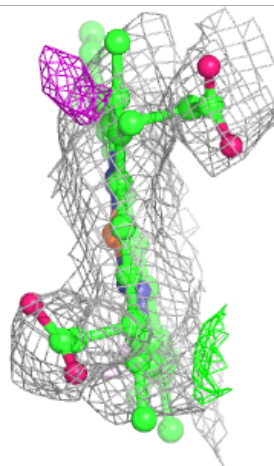
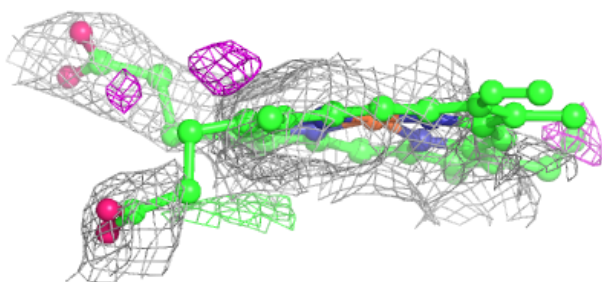
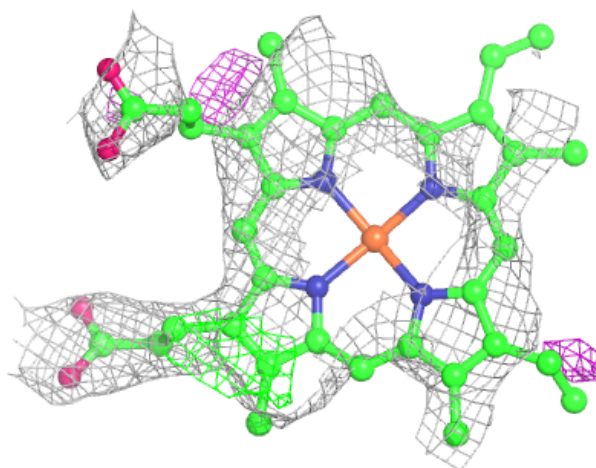
In the following table, the Atoms column lists the number of modelled atoms in the group and the number defined in the chemical component dictionary. The B-factors column lists the minimum, median, 95th percentile and maximum values of B factors of atoms in the group. The column labelled 'Q< 0.9' lists the number of atoms with occupancy less than 0.9.

Mol	Type	Chain	Res	Atoms	RSCC	RSR	B-factors(Å ²)	Q<0.9
9	NAG	E	606	14/15	0.67	0.20	131,147,161,162	0
7	MAN	E	601	11/12	0.83	0.21	119,123,127,127	0
7	MAN	B	602	11/12	0.85	0.12	106,111,115,122	0
9	NAG	E	605	14/15	0.87	0.15	112,117,126,132	0
9	NAG	E	604	14/15	0.91	0.32	86,97,108,112	0
7	MAN	B	603	11/12	0.93	0.28	76,85,90,92	0
6	HEM	B	601	43/43	0.93	0.26	84,88,97,106	0
7	MAN	E	602	11/12	0.93	0.29	56,73,79,84	0
10	XSG	E	608	29/29	0.93	0.20	56,64,87,87	0
5	CL	A	201	1/1	0.97	0.21	62,62,62,62	0
8	CA	B	604	1/1	0.98	0.20	94,94,94,94	0
8	CA	E	607	1/1	0.98	0.13	58,58,58,58	0
6	HEM	E	603	43/43	0.98	0.19	56,58,64,76	0

The following is a graphical depiction of the model fit to experimental electron density of all instances of the Ligand of Interest. In addition, ligands with molecular weight > 250 and outliers as shown on the geometry validation Tables will also be included. Each fit is shown from different orientation to approximate a three-dimensional view.

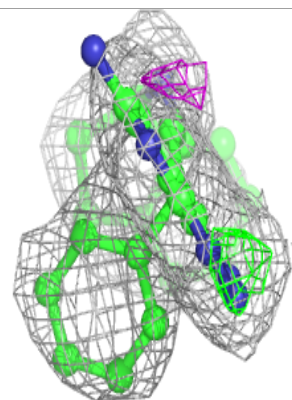
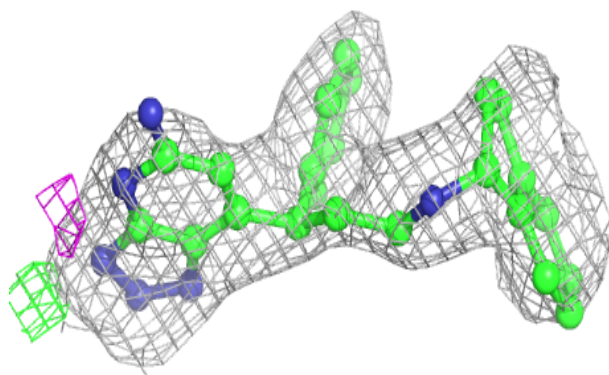
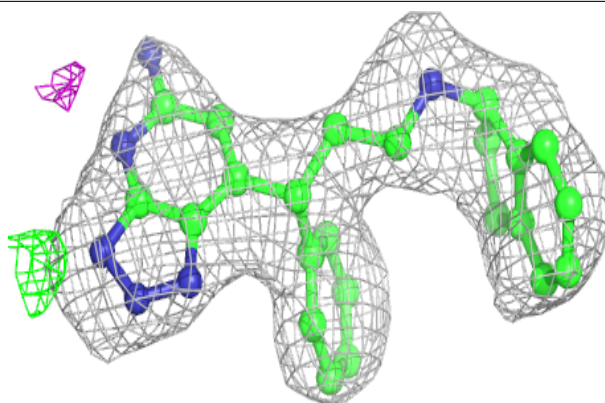
Electron density around HEM B 601:

$2mF_o-DF_c$ (at 0.7 rmsd) in gray
 mF_o-DF_c (at 3 rmsd) in purple (negative)
and green (positive)

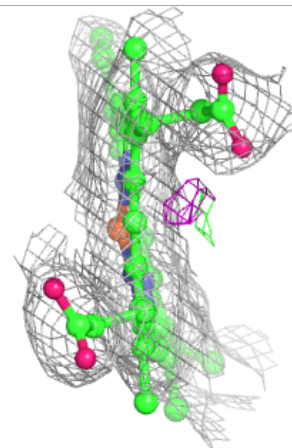
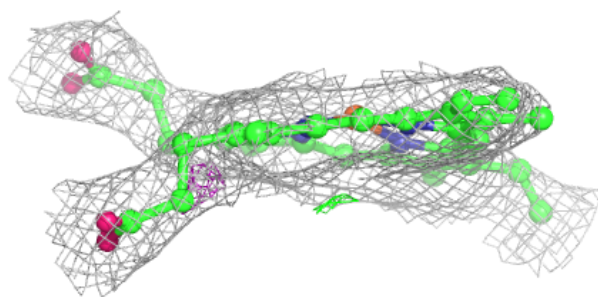
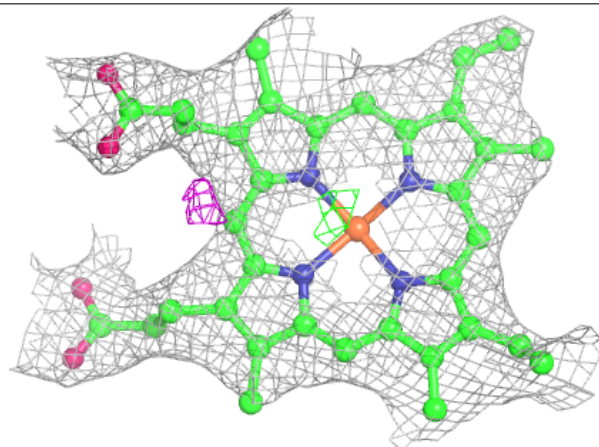


Electron density around XSG E 608:

$2mF_o-DF_c$ (at 0.7 rmsd) in gray
 mF_o-DF_c (at 3 rmsd) in purple (negative)
and green (positive)

**Electron density around HEM E 603:**

$2mF_o-DF_c$ (at 0.7 rmsd) in gray
 mF_o-DF_c (at 3 rmsd) in purple (negative)
and green (positive)



6.5 Other polymers [i](#)

There are no such residues in this entry.