



Full wwPDB X-ray Structure Validation Report ⓘ

Oct 9, 2023 – 07:32 PM EDT

PDB ID : 7LCO
Title : Improved Feline Drugs as SARS-CoV-2 Mpro Inhibitors: Structure-Activity Studies & Micellar Solubilization for Enhanced Bioavailability
Authors : Khan, M.B.; Lu, J.; Arutyunova, E.; Young, H.S.; Lemieux, M.J.
Deposited on : 2021-01-11
Resolution : 1.90 Å(reported)

This is a Full wwPDB X-ray Structure Validation Report for a publicly released PDB entry.

We welcome your comments at validation@mail.wwpdb.org

A user guide is available at

<https://www.wwpdb.org/validation/2017/XrayValidationReportHelp>

with specific help available everywhere you see the ⓘ symbol.

The types of validation reports are described at

<http://www.wwpdb.org/validation/2017/FAQs#types>.

The following versions of software and data (see [references ⓘ](#)) were used in the production of this report:

MolProbity : 4.02b-467
Mogul : 1.8.5 (274361), CSD as541be (2020)
Xtrriage (Phenix) : 1.13
EDS : 2.35.1
buster-report : 1.1.7 (2018)
Percentile statistics : 20191225.v01 (using entries in the PDB archive December 25th 2019)
Refmac : 5.8.0158
CCP4 : 7.0.044 (Gargrove)
Ideal geometry (proteins) : Engh & Huber (2001)
Ideal geometry (DNA, RNA) : Parkinson et al. (1996)
Validation Pipeline (wwPDB-VP) : 2.35.1

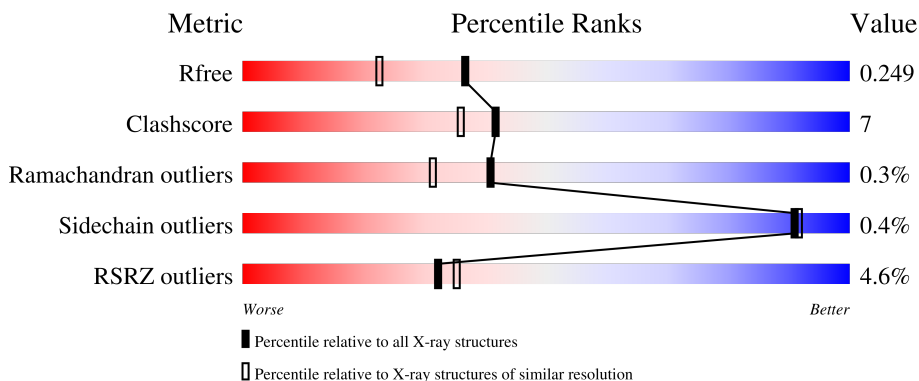
1 Overall quality at a glance

The following experimental techniques were used to determine the structure:

X-RAY DIFFRACTION

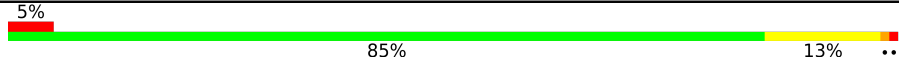
The reported resolution of this entry is 1.90 Å.

Percentile scores (ranging between 0-100) for global validation metrics of the entry are shown in the following graphic. The table shows the number of entries on which the scores are based.



Metric	Whole archive (#Entries)	Similar resolution (#Entries, resolution range(Å))
R_{free}	130704	6207 (1.90-1.90)
Clashscore	141614	6847 (1.90-1.90)
Ramachandran outliers	138981	6760 (1.90-1.90)
Sidechain outliers	138945	6760 (1.90-1.90)
RSRZ outliers	127900	6082 (1.90-1.90)

The table below summarises the geometric issues observed across the polymeric chains and their fit to the electron density. The red, orange, yellow and green segments of the lower bar indicate the fraction of residues that contain outliers for ≥ 3 , 2, 1 and 0 types of geometric quality criteria respectively. A grey segment represents the fraction of residues that are not modelled. The numeric value for each fraction is indicated below the corresponding segment, with a dot representing fractions $\leq 5\%$. The upper red bar (where present) indicates the fraction of residues that have poor fit to the electron density. The numeric value is given above the bar.

Mol	Chain	Length	Quality of chain
1	A	306	

2 Entry composition [i](#)

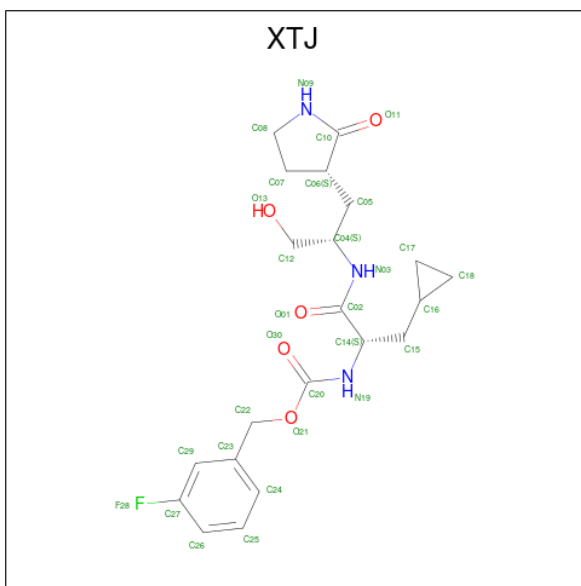
There are 3 unique types of molecules in this entry. The entry contains 4862 atoms, of which 2357 are hydrogens and 0 are deuteriums.

In the tables below, the ZeroOcc column contains the number of atoms modelled with zero occupancy, the AltConf column contains the number of residues with at least one atom in alternate conformation and the Trace column contains the number of residues modelled with at most 2 atoms.

- Molecule 1 is a protein called 3C-like proteinase.

Mol	Chain	Residues	Atoms					ZeroOcc	AltConf	Trace	
			Total	C	H	N	O				S
1	A	306	4709	1506	2331	405	444	23	0	2	0

- Molecule 2 is (3-fluorophenyl)methyl [(2S)-3-cyclopropyl-1-oxo-1-((2S)-1-oxo-3-[(3S)-2-oxopyrrolidin-3-yl]propan-2-yl)amino)propan-2-yl]carbamate (three-letter code: XTJ) (formula: C₂₁H₂₈FN₃O₅) (labeled as "Ligand of Interest" by depositor).



Mol	Chain	Residues	Atoms					ZeroOcc	AltConf	
			Total	C	F	H	N			O
2	A	1	56	21	1	26	3	5	0	0

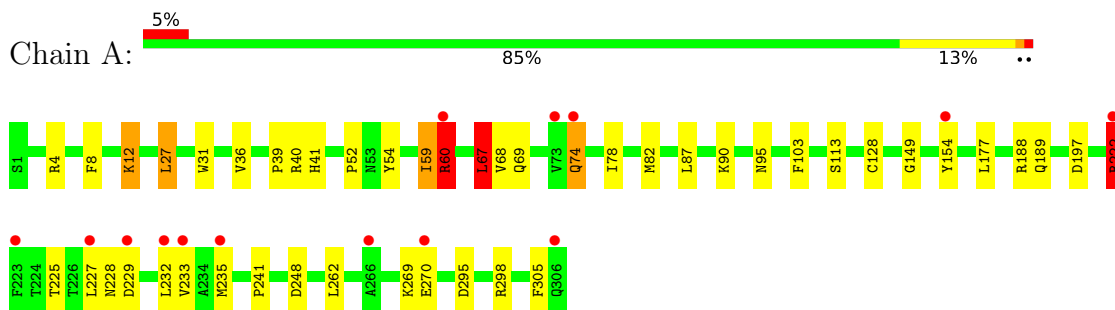
- Molecule 3 is water.

Mol	Chain	Residues	Atoms		ZeroOcc	AltConf
3	A	97	Total	O	0	0
			97	97		

3 Residue-property plots [i](#)

These plots are drawn for all protein, RNA, DNA and oligosaccharide chains in the entry. The first graphic for a chain summarises the proportions of the various outlier classes displayed in the second graphic. The second graphic shows the sequence view annotated by issues in geometry and electron density. Residues are color-coded according to the number of geometric quality criteria for which they contain at least one outlier: green = 0, yellow = 1, orange = 2 and red = 3 or more. A red dot above a residue indicates a poor fit to the electron density ($RSRZ > 2$). Stretches of 2 or more consecutive residues without any outlier are shown as a green connector. Residues present in the sample, but not in the model, are shown in grey.

- Molecule 1: 3C-like proteinase



4 Data and refinement statistics

Property	Value	Source
Space group	C 1 2 1	Depositor
Cell constants a, b, c, α , β , γ	114.26Å 53.35Å 45.63Å 90.00° 101.95° 90.00°	Depositor
Resolution (Å)	39.05 – 1.90 44.64 – 1.90	Depositor EDS
% Data completeness (in resolution range)	95.8 (39.05-1.90) 95.8 (44.64-1.90)	Depositor EDS
R_{merge}	(Not available)	Depositor
R_{sym}	(Not available)	Depositor
$\langle I/\sigma(I) \rangle$ ¹	1.03 (at 1.89Å)	Xtrriage
Refinement program	PHENIX 1.18.2_3874	Depositor
R, R_{free}	0.198 , 0.249 0.198 , 0.249	Depositor DCC
R_{free} test set	1021 reflections (5.00%)	wwPDB-VP
Wilson B-factor (Å ²)	39.5	Xtrriage
Anisotropy	0.458	Xtrriage
Bulk solvent k_{sol} (e/Å ³), B_{sol} (Å ²)	0.40 , 42.6	EDS
L-test for twinning ²	$\langle L \rangle = 0.50$, $\langle L^2 \rangle = 0.34$	Xtrriage
Estimated twinning fraction	No twinning to report.	Xtrriage
F_o, F_c correlation	0.96	EDS
Total number of atoms	4862	wwPDB-VP
Average B, all atoms (Å ²)	49.0	wwPDB-VP

Xtrriage's analysis on translational NCS is as follows: *The largest off-origin peak in the Patterson function is 9.94% of the height of the origin peak. No significant pseudotranslation is detected.*

¹Intensities estimated from amplitudes.

²Theoretical values of $\langle |L| \rangle$, $\langle L^2 \rangle$ for acentric reflections are 0.5, 0.333 respectively for untwinned datasets, and 0.375, 0.2 for perfectly twinned datasets.

5 Model quality i

5.1 Standard geometry i

Bond lengths and bond angles in the following residue types are not validated in this section: XTJ

The Z score for a bond length (or angle) is the number of standard deviations the observed value is removed from the expected value. A bond length (or angle) with $|Z| > 5$ is considered an outlier worth inspection. RMSZ is the root-mean-square of all Z scores of the bond lengths (or angles).

Mol	Chain	Bond lengths		Bond angles	
		RMSZ	# Z >5	RMSZ	# Z >5
1	A	0.89	4/2437 (0.2%)	1.55	32/3311 (1.0%)

Chiral center outliers are detected by calculating the chiral volume of a chiral center and verifying if the center is modelled as a planar moiety or with the opposite hand. A planarity outlier is detected by checking planarity of atoms in a peptide group, atoms in a mainchain group or atoms of a sidechain that are expected to be planar.

Mol	Chain	#Chirality outliers	#Planarity outliers
1	A	0	2

All (4) bond length outliers are listed below:

Mol	Chain	Res	Type	Atoms	Z	Observed(Å)	Ideal(Å)
1	A	270	GLU	CD-OE2	-21.01	1.02	1.25
1	A	270	GLU	CG-CD	-7.04	1.41	1.51
1	A	222	ARG	CZ-NH1	5.88	1.40	1.33
1	A	270	GLU	CD-OE1	-5.43	1.19	1.25

All (32) bond angle outliers are listed below:

Mol	Chain	Res	Type	Atoms	Z	Observed(°)	Ideal(°)
1	A	270	GLU	OE1-CD-OE2	-35.68	80.48	123.30
1	A	270	GLU	CG-CD-OE1	27.51	173.32	118.30
1	A	67	LEU	CB-CG-CD2	22.82	149.80	111.00
1	A	222	ARG	NE-CZ-NH2	-21.18	109.71	120.30
1	A	222	ARG	NE-CZ-NH1	20.79	130.69	120.30
1	A	60	ARG	NE-CZ-NH1	-16.97	111.82	120.30
1	A	60	ARG	CG-CD-NE	-15.90	78.40	111.80
1	A	27	LEU	CB-CG-CD1	14.69	135.98	111.00
1	A	60	ARG	CD-NE-CZ	12.84	141.58	123.60

Continued on next page...

Continued from previous page...

Mol	Chain	Res	Type	Atoms	Z	Observed(°)	Ideal(°)
1	A	60	ARG	CA-CB-CG	-10.15	91.06	113.40
1	A	270	GLU	CG-CD-OE2	-9.53	99.23	118.30
1	A	27	LEU	CB-CG-CD2	-9.34	95.11	111.00
1	A	269	LYS	CD-CE-NZ	8.53	131.31	111.70
1	A	59	ILE	C-N-CA	-8.03	101.62	121.70
1	A	222	ARG	CB-CG-CD	-7.96	90.89	111.60
1	A	74	GLN	CA-CB-CG	7.79	130.54	113.40
1	A	269	LYS	C-N-CA	-6.91	104.43	121.70
1	A	60	ARG	N-CA-CB	6.81	122.86	110.60
1	A	82	MET	CG-SD-CE	6.54	110.67	100.20
1	A	188	ARG	CG-CD-NE	6.17	124.75	111.80
1	A	4	ARG	NE-CZ-NH1	-5.86	117.37	120.30
1	A	248	ASP	CB-CG-OD2	-5.84	113.04	118.30
1	A	270	GLU	N-CA-C	-5.83	95.25	111.00
1	A	60	ARG	CB-CA-C	-5.78	98.84	110.40
1	A	233	VAL	CG1-CB-CG2	5.62	119.89	110.90
1	A	12	LYS	CB-CG-CD	-5.53	97.22	111.60
1	A	197	ASP	CB-CG-OD2	-5.27	113.56	118.30
1	A	197	ASP	CB-CG-OD1	5.22	123.00	118.30
1	A	60	ARG	NE-CZ-NH2	5.19	122.90	120.30
1	A	128[A]	CYS	CA-CB-SG	5.08	123.15	114.00
1	A	128[B]	CYS	CA-CB-SG	5.08	123.15	114.00
1	A	248	ASP	CB-CG-OD1	5.07	122.86	118.30

There are no chirality outliers.

All (2) planarity outliers are listed below:

Mol	Chain	Res	Type	Group
1	A	222	ARG	Sidechain
1	A	60	ARG	Sidechain

5.2 Too-close contacts [\(i\)](#)

In the following table, the Non-H and H(model) columns list the number of non-hydrogen atoms and hydrogen atoms in the chain respectively. The H(added) column lists the number of hydrogen atoms added and optimized by MolProbity. The Clashes column lists the number of clashes within the asymmetric unit, whereas Symm-Clashes lists symmetry-related clashes.

Mol	Chain	Non-H	H(model)	H(added)	Clashes	Symm-Clashes
1	A	2378	2331	2331	33	0
2	A	30	26	0	0	0

Continued on next page...

Continued from previous page...

Mol	Chain	Non-H	H(model)	H(added)	Clashes	Symm-Clashes
3	A	97	0	0	1	0
All	All	2505	2357	2331	33	0

The all-atom clashscore is defined as the number of clashes found per 1000 atoms (including hydrogen atoms). The all-atom clashscore for this structure is 7.

All (33) close contacts within the same asymmetric unit are listed below, sorted by their clash magnitude.

Atom-1	Atom-2	Interatomic distance (Å)	Clash overlap (Å)
1:A:68:VAL:O	1:A:74:GLN:HB3	1.80	0.80
1:A:60:ARG:HG3	1:A:60:ARG:O	1.81	0.80
1:A:12:LYS:HD3	1:A:12:LYS:N	1.99	0.75
1:A:69:GLN:HA	1:A:74:GLN:HA	1.68	0.75
1:A:225:THR:OG1	1:A:229:ASP:OD1	2.04	0.74
1:A:68:VAL:N	1:A:74:GLN:OE1	2.22	0.73
1:A:228:ASN:O	1:A:232:LEU:HD13	1.90	0.71
1:A:227:LEU:HD12	1:A:262:LEU:HD21	1.77	0.66
1:A:69:GLN:CB	1:A:74:GLN:HG2	2.28	0.64
1:A:69:GLN:HB2	1:A:74:GLN:HG2	1.83	0.61
1:A:40:ARG:HA	1:A:87:LEU:HG	1.88	0.55
1:A:295:ASP:OD1	1:A:298[B]:ARG:NH1	2.39	0.54
1:A:113:SER:O	1:A:149:GLY:HA2	2.10	0.50
1:A:235:MET:CE	1:A:241:PRO:HG3	2.42	0.50
1:A:36:VAL:HG21	1:A:68:VAL:HG11	1.94	0.49
1:A:222:ARG:HA	1:A:222:ARG:HD2	1.63	0.48
1:A:12:LYS:HD3	1:A:12:LYS:H	1.74	0.48
1:A:59:ILE:O	1:A:60:ARG:C	2.46	0.47
1:A:69:GLN:HA	1:A:74:GLN:CA	2.43	0.47
1:A:235:MET:HE3	1:A:241:PRO:HG3	1.97	0.47
1:A:222:ARG:O	1:A:222:ARG:HG3	2.15	0.47
1:A:52:PRO:HG2	1:A:54:TYR:CE2	2.50	0.46
1:A:27:LEU:HD13	1:A:39:PRO:HD2	1.97	0.45
1:A:41:HIS:HD2	3:A:558:HOH:O	1.98	0.45
1:A:67:LEU:C	1:A:74:GLN:OE1	2.54	0.45
1:A:189:GLN:O	1:A:189:GLN:HG2	2.16	0.45
1:A:68:VAL:O	1:A:74:GLN:CB	2.59	0.44
1:A:228:ASN:O	1:A:232:LEU:CD1	2.63	0.44
1:A:8:PHE:HE1	1:A:305:PHE:CZ	2.36	0.44
1:A:103:PHE:CE1	1:A:177:LEU:HD22	2.52	0.44
1:A:31:TRP:CD2	1:A:95:ASN:HB2	2.53	0.43
1:A:12:LYS:N	1:A:12:LYS:CD	2.77	0.43

Continued on next page...

Continued from previous page...

Atom-1	Atom-2	Interatomic distance (Å)	Clash overlap (Å)
1:A:78:ILE:HD11	1:A:90:LYS:HG3	2.01	0.41

There are no symmetry-related clashes.

5.3 Torsion angles [i](#)

5.3.1 Protein backbone [i](#)

In the following table, the Percentiles column shows the percent Ramachandran outliers of the chain as a percentile score with respect to all X-ray entries followed by that with respect to entries of similar resolution.

The Analysed column shows the number of residues for which the backbone conformation was analysed, and the total number of residues.

Mol	Chain	Analysed	Favoured	Allowed	Outliers	Percentiles
1	A	306/306 (100%)	294 (96%)	11 (4%)	1 (0%)	41 31

All (1) Ramachandran outliers are listed below:

Mol	Chain	Res	Type
1	A	154	TYR

5.3.2 Protein sidechains [i](#)

In the following table, the Percentiles column shows the percent sidechain outliers of the chain as a percentile score with respect to all X-ray entries followed by that with respect to entries of similar resolution.

The Analysed column shows the number of residues for which the sidechain conformation was analysed, and the total number of residues.

Mol	Chain	Analysed	Rotameric	Outliers	Percentiles
1	A	265/263 (101%)	264 (100%)	1 (0%)	91 91

All (1) residues with a non-rotameric sidechain are listed below:

Mol	Chain	Res	Type
1	A	67	LEU

Sometimes sidechains can be flipped to improve hydrogen bonding and reduce clashes. All (1) such sidechains are listed below:

Mol	Chain	Res	Type
1	A	41	HIS

5.3.3 RNA [i](#)

There are no RNA molecules in this entry.

5.4 Non-standard residues in protein, DNA, RNA chains [i](#)

There are no non-standard protein/DNA/RNA residues in this entry.

5.5 Carbohydrates [i](#)

There are no monosaccharides in this entry.

5.6 Ligand geometry [i](#)

1 ligand is modelled in this entry.

In the following table, the Counts columns list the number of bonds (or angles) for which Mogul statistics could be retrieved, the number of bonds (or angles) that are observed in the model and the number of bonds (or angles) that are defined in the Chemical Component Dictionary. The Link column lists molecule types, if any, to which the group is linked. The Z score for a bond length (or angle) is the number of standard deviations the observed value is removed from the expected value. A bond length (or angle) with $|Z| > 2$ is considered an outlier worth inspection. RMSZ is the root-mean-square of all Z scores of the bond lengths (or angles).

Mol	Type	Chain	Res	Link	Bond lengths			Bond angles		
					Counts	RMSZ	$\# Z > 2$	Counts	RMSZ	$\# Z > 2$
2	XTJ	A	401	1	32,32,32	4.00	13 (40%)	39,43,43	1.84	12 (30%)

In the following table, the Chirals column lists the number of chiral outliers, the number of chiral centers analysed, the number of these observed in the model and the number defined in the Chemical Component Dictionary. Similar counts are reported in the Torsion and Rings columns. '-' means no outliers of that kind were identified.

Mol	Type	Chain	Res	Link	Chirals	Torsions	Rings
2	XTJ	A	401	1	-	2/27/39/39	0/3/3/3

All (13) bond length outliers are listed below:

Mol	Chain	Res	Type	Atoms	Z	Observed(Å)	Ideal(Å)
2	A	401	XTJ	C10-N09	12.55	1.47	1.33
2	A	401	XTJ	C29-C23	9.38	1.55	1.39
2	A	401	XTJ	C26-C27	8.46	1.53	1.37
2	A	401	XTJ	C25-C24	7.31	1.54	1.38
2	A	401	XTJ	C02-N03	5.43	1.46	1.34
2	A	401	XTJ	O13-C12	-4.73	1.22	1.42
2	A	401	XTJ	C20-N19	4.44	1.45	1.34
2	A	401	XTJ	O21-C20	3.14	1.41	1.35
2	A	401	XTJ	C25-C26	-3.00	1.32	1.38
2	A	401	XTJ	O11-C10	-2.96	1.17	1.23
2	A	401	XTJ	O01-C02	-2.67	1.18	1.23
2	A	401	XTJ	C29-C27	-2.29	1.33	1.37
2	A	401	XTJ	C24-C23	-2.28	1.33	1.38

All (12) bond angle outliers are listed below:

Mol	Chain	Res	Type	Atoms	Z	Observed(°)	Ideal(°)
2	A	401	XTJ	C16-C15-C14	-6.56	105.69	114.52
2	A	401	XTJ	O01-C02-N03	-3.26	116.89	122.93
2	A	401	XTJ	C08-N09-C10	-2.90	108.15	113.84
2	A	401	XTJ	O21-C20-N19	2.88	116.36	110.50
2	A	401	XTJ	C14-C02-N03	2.81	122.87	116.70
2	A	401	XTJ	C04-N03-C02	-2.57	119.10	123.20
2	A	401	XTJ	C05-C06-C07	-2.49	108.16	117.31
2	A	401	XTJ	O30-C20-N19	-2.41	120.90	124.85
2	A	401	XTJ	C05-C06-C10	2.41	118.18	112.89
2	A	401	XTJ	F28-C27-C29	2.29	121.53	118.25
2	A	401	XTJ	O13-C12-C04	2.19	117.60	111.95
2	A	401	XTJ	O11-C10-N09	-2.15	122.56	125.54

There are no chirality outliers.

All (2) torsion outliers are listed below:

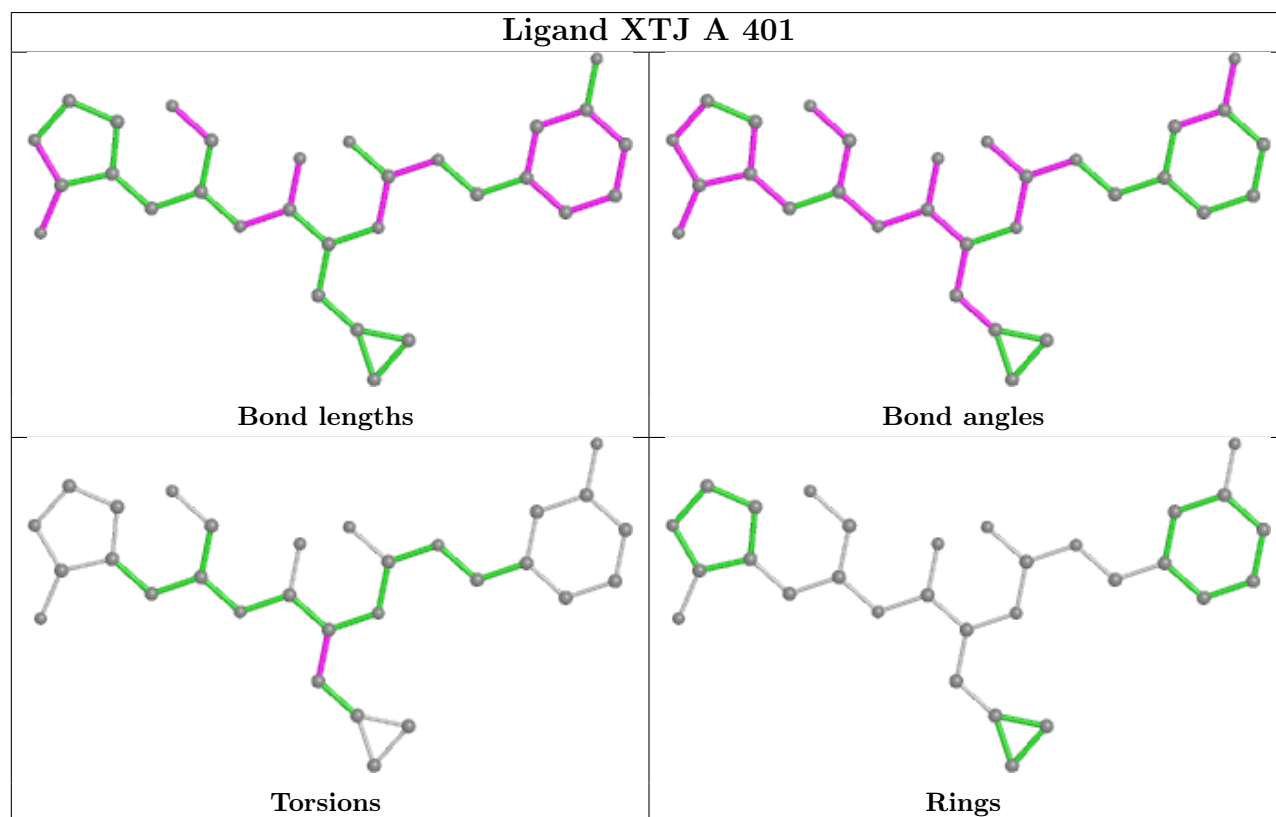
Mol	Chain	Res	Type	Atoms
2	A	401	XTJ	N19-C14-C15-C16
2	A	401	XTJ	C02-C14-C15-C16

There are no ring outliers.

No monomer is involved in short contacts.

The following is a two-dimensional graphical depiction of Mogul quality analysis of bond lengths,

bond angles, torsion angles, and ring geometry for all instances of the Ligand of Interest. In addition, ligands with molecular weight > 250 and outliers as shown on the validation Tables will also be included. For torsion angles, if less than 5% of the Mogul distribution of torsion angles is within 10 degrees of the torsion angle in question, then that torsion angle is considered an outlier. Any bond that is central to one or more torsion angles identified as an outlier by Mogul will be highlighted in the graph. For rings, the root-mean-square deviation (RMSD) between the ring in question and similar rings identified by Mogul is calculated over all ring torsion angles. If the average RMSD is greater than 60 degrees and the minimal RMSD between the ring in question and any Mogul-identified rings is also greater than 60 degrees, then that ring is considered an outlier. The outliers are highlighted in purple. The color gray indicates Mogul did not find sufficient equivalents in the CSD to analyse the geometry.



5.7 Other polymers [\(i\)](#)

There are no such residues in this entry.

5.8 Polymer linkage issues [\(i\)](#)

There are no chain breaks in this entry.

6 Fit of model and data [i](#)

6.1 Protein, DNA and RNA chains [i](#)

In the following table, the column labelled ‘#RSRZ> 2’ contains the number (and percentage) of RSRZ outliers, followed by percent RSRZ outliers for the chain as percentile scores relative to all X-ray entries and entries of similar resolution. The OWAB column contains the minimum, median, 95th percentile and maximum values of the occupancy-weighted average B-factor per residue. The column labelled ‘Q< 0.9’ lists the number of (and percentage) of residues with an average occupancy less than 0.9.

Mol	Chain	Analysed	<RSRZ>	#RSRZ>2	OWAB(Å ²)	Q<0.9
1	A	306/306 (100%)	0.47	14 (4%) 32 35	26, 43, 63, 107	0

All (14) RSRZ outliers are listed below:

Mol	Chain	Res	Type	RSRZ
1	A	74	GLN	10.7
1	A	60	ARG	6.7
1	A	306	GLN	6.1
1	A	222	ARG	3.9
1	A	154	TYR	3.4
1	A	227	LEU	3.1
1	A	229	ASP	2.9
1	A	233	VAL	2.8
1	A	232	LEU	2.8
1	A	266	ALA	2.5
1	A	223	PHE	2.3
1	A	270	GLU	2.2
1	A	73	VAL	2.2
1	A	235	MET	2.2

6.2 Non-standard residues in protein, DNA, RNA chains [i](#)

There are no non-standard protein/DNA/RNA residues in this entry.

6.3 Carbohydrates [i](#)

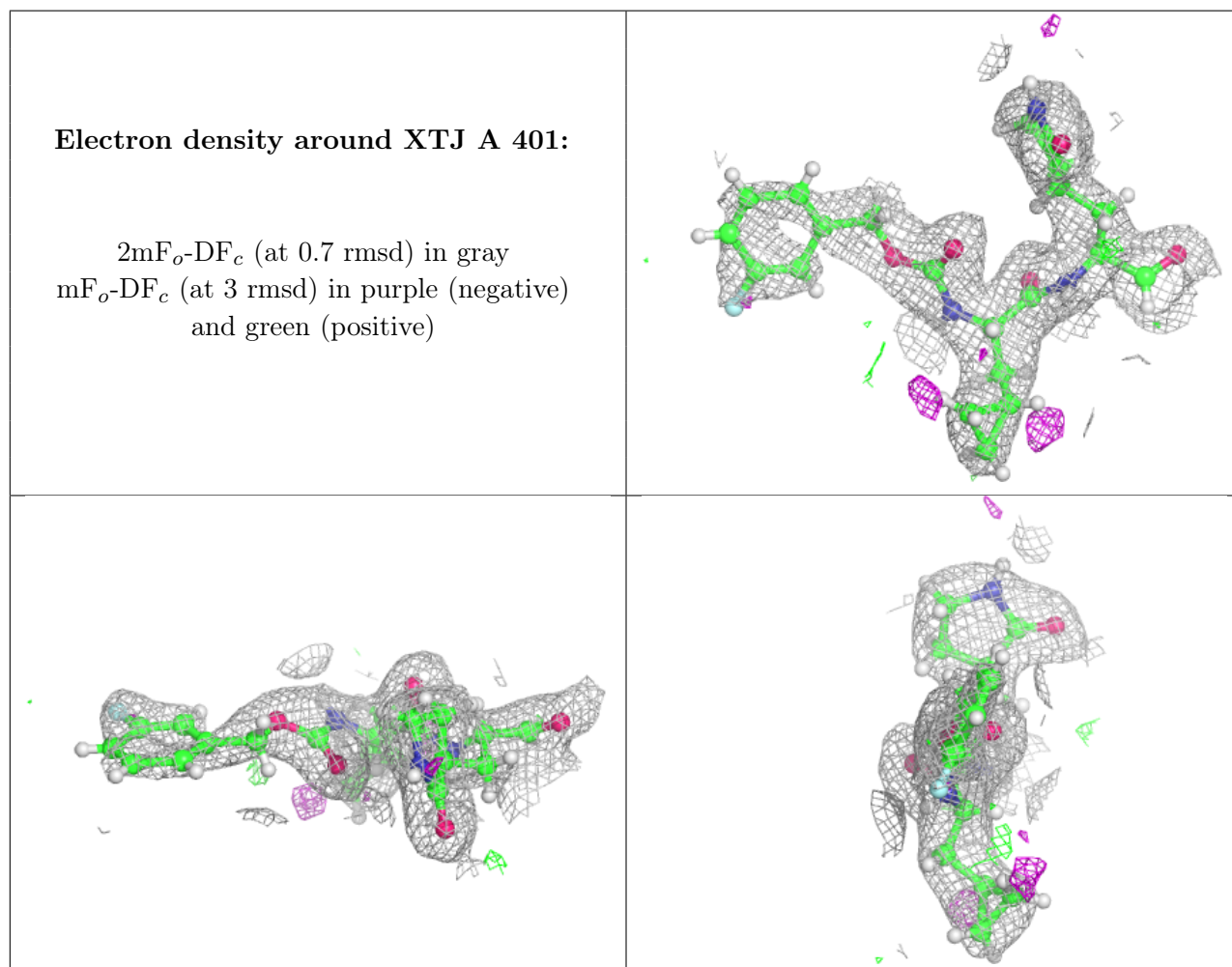
There are no monosaccharides in this entry.

6.4 Ligands [i](#)

In the following table, the Atoms column lists the number of modelled atoms in the group and the number defined in the chemical component dictionary. The B-factors column lists the minimum, median, 95th percentile and maximum values of B factors of atoms in the group. The column labelled 'Q< 0.9' lists the number of atoms with occupancy less than 0.9.

Mol	Type	Chain	Res	Atoms	RSCC	RSR	B-factors(Å ²)	Q<0.9
2	XTJ	A	401	30/30	0.88	0.17	32,43,62,69	0

The following is a graphical depiction of the model fit to experimental electron density of all instances of the Ligand of Interest. In addition, ligands with molecular weight > 250 and outliers as shown on the geometry validation Tables will also be included. Each fit is shown from different orientation to approximate a three-dimensional view.



6.5 Other polymers [i](#)

There are no such residues in this entry.