



# Full wwPDB X-ray Structure Validation Report ⓘ

Mar 9, 2018 – 11:36 am GMT

PDB ID : 3LDW  
Title : Crystal Structure of Plasmodium vivax geranylgeranylpyrophosphate synthase PVX\_092040 with zoledronate and IPP bound  
Authors : Wernimont, A.K.; Lew, J.; Zhao, Y.; Koziaradzki, I.; Cossar, D.; Schapira, M.; Bochkarev, A.; Arrowsmith, C.H.; Bountra, C.; Weigelt, J.; Edwards, A.M.; Hui, R.; Artz, J.D.; Structural Genomics Consortium (SGC)  
Deposited on : 2010-01-13  
Resolution : 2.47 Å (reported)

This is a Full wwPDB X-ray Structure Validation Report for a publicly released PDB entry.

We welcome your comments at [validation@mail.wwpdb.org](mailto:validation@mail.wwpdb.org)

A user guide is available at

<https://www.wwpdb.org/validation/2017/XrayValidationReportHelp>

with specific help available everywhere you see the ⓘ symbol.

---

The following versions of software and data (see [references ⓘ](#)) were used in the production of this report:

MolProbity : 4.02b-467  
Mogul : 1.7.3 (157068), CSD as539be (2018)  
Xtriage (Phenix) : 1.13  
EDS : trunk30967  
Percentile statistics : 20171227.v01 (using entries in the PDB archive December 27th 2017)  
Refmac : 5.8.0158  
CCP4 : 7.0 (Gargrove)  
Ideal geometry (proteins) : Engh & Huber (2001)  
Ideal geometry (DNA, RNA) : Parkinson et al. (1996)  
Validation Pipeline (wwPDB-VP) : trunk30967

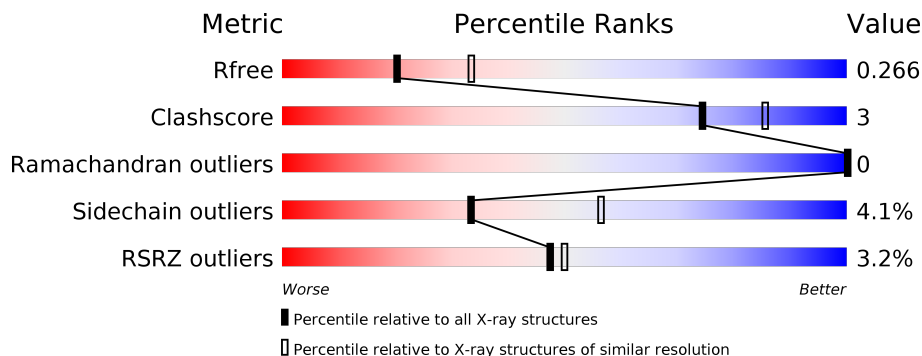
# 1 Overall quality at a glance

The following experimental techniques were used to determine the structure:

*X-RAY DIFFRACTION*

The reported resolution of this entry is 2.47 Å.

Percentile scores (ranging between 0-100) for global validation metrics of the entry are shown in the following graphic. The table shows the number of entries on which the scores are based.



Metric	Whole archive (#Entries)	Similar resolution (#Entries, resolution range(Å))
$R_{free}$	111664	5140 (2.50-2.46)
Clashscore	122126	5860 (2.50-2.46)
Ramachandran outliers	120053	5763 (2.50-2.46)
Sidechain outliers	120020	5765 (2.50-2.46)
RSRZ outliers	108989	5026 (2.50-2.46)

The table below summarises the geometric issues observed across the polymeric chains and their fit to the electron density. The red, orange, yellow and green segments on the lower bar indicate the fraction of residues that contain outliers for  $\geq 3$ , 2, 1 and 0 types of geometric quality criteria. A grey segment represents the fraction of residues that are not modelled. The numeric value for each fraction is indicated below the corresponding segment, with a dot representing fractions  $\leq 5\%$ . The upper red bar (where present) indicates the fraction of residues that have poor fit to the electron density. The numeric value is given above the bar.

Mol	Chain	Length	Quality of chain
1	A	396	 3% 82% 8% • 10%
1	B	396	 3% 78% 11% • 11%
1	C	396	 2% 82% 6% • 10%
1	D	396	 3% 78% 11% 11%

The following table lists non-polymeric compounds, carbohydrate monomers and non-standard residues in protein, DNA, RNA chains that are outliers for geometric or electron-density-fit crite-

ria:

Mol	Type	Chain	Res	Chirality	Geometry	Clashes	Electron density
5	EDO	B	1106	-	-	-	X
6	GOL	B	1105	-	-	X	-

## 2 Entry composition [i](#)

There are 7 unique types of molecules in this entry. The entry contains 12338 atoms, of which 0 are hydrogens and 0 are deuteriums.

In the tables below, the ZeroOcc column contains the number of atoms modelled with zero occupancy, the AltConf column contains the number of residues with at least one atom in alternate conformation and the Trace column contains the number of residues modelled with at most 2 atoms.

- Molecule 1 is a protein called Farnesyl pyrophosphate synthase.

Mol	Chain	Residues	Atoms					ZeroOcc	AltConf	Trace
			Total	C	N	O	S			
1	A	358	2917	1901	462	538	16	0	4	0
1	B	353	2899	1899	457	528	15	0	3	0
1	C	357	2919	1908	463	533	15	0	5	0
1	D	352	2883	1880	456	532	15	0	4	0

There are 92 discrepancies between the modelled and reference sequences:

Chain	Residue	Modelled	Actual	Comment	Reference
A	1	MET	-	EXPRESSION TAG	UNP A5K4U6
A	2	GLY	-	EXPRESSION TAG	UNP A5K4U6
A	3	SER	-	EXPRESSION TAG	UNP A5K4U6
A	4	SER	-	EXPRESSION TAG	UNP A5K4U6
A	5	HIS	-	EXPRESSION TAG	UNP A5K4U6
A	6	HIS	-	EXPRESSION TAG	UNP A5K4U6
A	7	HIS	-	EXPRESSION TAG	UNP A5K4U6
A	8	HIS	-	EXPRESSION TAG	UNP A5K4U6
A	9	HIS	-	EXPRESSION TAG	UNP A5K4U6
A	10	HIS	-	EXPRESSION TAG	UNP A5K4U6
A	11	SER	-	EXPRESSION TAG	UNP A5K4U6
A	12	SER	-	EXPRESSION TAG	UNP A5K4U6
A	13	GLY	-	EXPRESSION TAG	UNP A5K4U6
A	14	ARG	-	EXPRESSION TAG	UNP A5K4U6
A	15	GLU	-	EXPRESSION TAG	UNP A5K4U6
A	16	ASN	-	EXPRESSION TAG	UNP A5K4U6
A	17	LEU	-	EXPRESSION TAG	UNP A5K4U6
A	18	TYR	-	EXPRESSION TAG	UNP A5K4U6
A	19	PHE	-	EXPRESSION TAG	UNP A5K4U6
A	20	GLN	-	EXPRESSION TAG	UNP A5K4U6
A	21	GLY	-	EXPRESSION TAG	UNP A5K4U6

*Continued on next page...*

*Continued from previous page...*

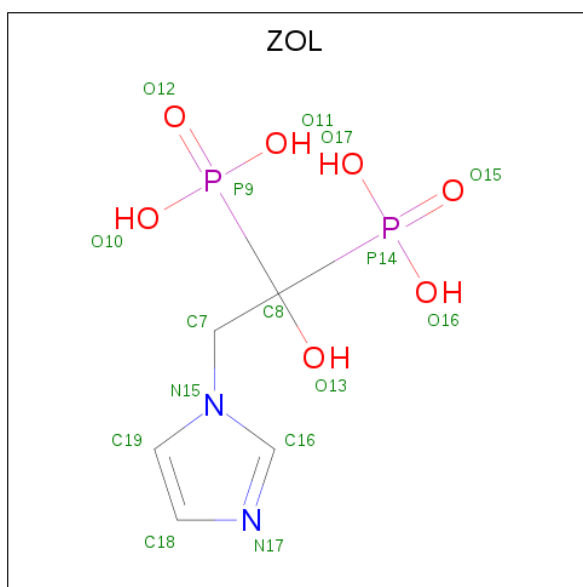
Chain	Residue	Modelled	Actual	Comment	Reference
A	134	MET	THR	SEE REMARK 999	UNP A5K4U6
A	227	ASP	ASN	SEE REMARK 999	UNP A5K4U6
B	1	MET	-	EXPRESSION TAG	UNP A5K4U6
B	2	GLY	-	EXPRESSION TAG	UNP A5K4U6
B	3	SER	-	EXPRESSION TAG	UNP A5K4U6
B	4	SER	-	EXPRESSION TAG	UNP A5K4U6
B	5	HIS	-	EXPRESSION TAG	UNP A5K4U6
B	6	HIS	-	EXPRESSION TAG	UNP A5K4U6
B	7	HIS	-	EXPRESSION TAG	UNP A5K4U6
B	8	HIS	-	EXPRESSION TAG	UNP A5K4U6
B	9	HIS	-	EXPRESSION TAG	UNP A5K4U6
B	10	HIS	-	EXPRESSION TAG	UNP A5K4U6
B	11	SER	-	EXPRESSION TAG	UNP A5K4U6
B	12	SER	-	EXPRESSION TAG	UNP A5K4U6
B	13	GLY	-	EXPRESSION TAG	UNP A5K4U6
B	14	ARG	-	EXPRESSION TAG	UNP A5K4U6
B	15	GLU	-	EXPRESSION TAG	UNP A5K4U6
B	16	ASN	-	EXPRESSION TAG	UNP A5K4U6
B	17	LEU	-	EXPRESSION TAG	UNP A5K4U6
B	18	TYR	-	EXPRESSION TAG	UNP A5K4U6
B	19	PHE	-	EXPRESSION TAG	UNP A5K4U6
B	20	GLN	-	EXPRESSION TAG	UNP A5K4U6
B	21	GLY	-	EXPRESSION TAG	UNP A5K4U6
B	134	MET	THR	SEE REMARK 999	UNP A5K4U6
B	227	ASP	ASN	SEE REMARK 999	UNP A5K4U6
C	1	MET	-	EXPRESSION TAG	UNP A5K4U6
C	2	GLY	-	EXPRESSION TAG	UNP A5K4U6
C	3	SER	-	EXPRESSION TAG	UNP A5K4U6
C	4	SER	-	EXPRESSION TAG	UNP A5K4U6
C	5	HIS	-	EXPRESSION TAG	UNP A5K4U6
C	6	HIS	-	EXPRESSION TAG	UNP A5K4U6
C	7	HIS	-	EXPRESSION TAG	UNP A5K4U6
C	8	HIS	-	EXPRESSION TAG	UNP A5K4U6
C	9	HIS	-	EXPRESSION TAG	UNP A5K4U6
C	10	HIS	-	EXPRESSION TAG	UNP A5K4U6
C	11	SER	-	EXPRESSION TAG	UNP A5K4U6
C	12	SER	-	EXPRESSION TAG	UNP A5K4U6
C	13	GLY	-	EXPRESSION TAG	UNP A5K4U6
C	14	ARG	-	EXPRESSION TAG	UNP A5K4U6
C	15	GLU	-	EXPRESSION TAG	UNP A5K4U6
C	16	ASN	-	EXPRESSION TAG	UNP A5K4U6
C	17	LEU	-	EXPRESSION TAG	UNP A5K4U6

*Continued on next page...*

*Continued from previous page...*

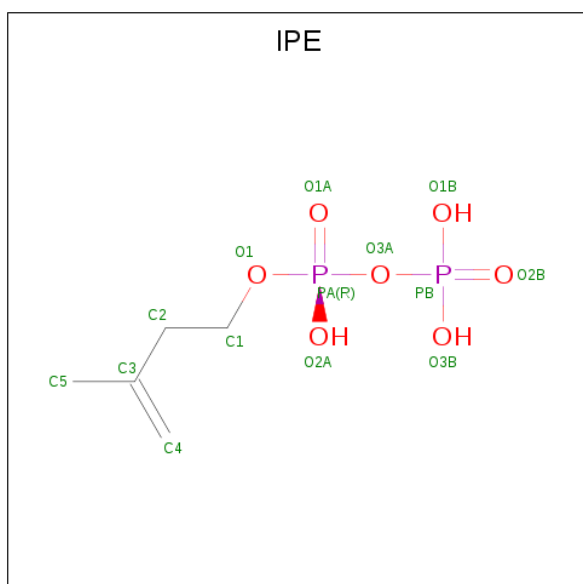
Chain	Residue	Modelled	Actual	Comment	Reference
C	18	TYR	-	EXPRESSION TAG	UNP A5K4U6
C	19	PHE	-	EXPRESSION TAG	UNP A5K4U6
C	20	GLN	-	EXPRESSION TAG	UNP A5K4U6
C	21	GLY	-	EXPRESSION TAG	UNP A5K4U6
C	134	MET	THR	SEE REMARK 999	UNP A5K4U6
C	227	ASP	ASN	SEE REMARK 999	UNP A5K4U6
D	1	MET	-	EXPRESSION TAG	UNP A5K4U6
D	2	GLY	-	EXPRESSION TAG	UNP A5K4U6
D	3	SER	-	EXPRESSION TAG	UNP A5K4U6
D	4	SER	-	EXPRESSION TAG	UNP A5K4U6
D	5	HIS	-	EXPRESSION TAG	UNP A5K4U6
D	6	HIS	-	EXPRESSION TAG	UNP A5K4U6
D	7	HIS	-	EXPRESSION TAG	UNP A5K4U6
D	8	HIS	-	EXPRESSION TAG	UNP A5K4U6
D	9	HIS	-	EXPRESSION TAG	UNP A5K4U6
D	10	HIS	-	EXPRESSION TAG	UNP A5K4U6
D	11	SER	-	EXPRESSION TAG	UNP A5K4U6
D	12	SER	-	EXPRESSION TAG	UNP A5K4U6
D	13	GLY	-	EXPRESSION TAG	UNP A5K4U6
D	14	ARG	-	EXPRESSION TAG	UNP A5K4U6
D	15	GLU	-	EXPRESSION TAG	UNP A5K4U6
D	16	ASN	-	EXPRESSION TAG	UNP A5K4U6
D	17	LEU	-	EXPRESSION TAG	UNP A5K4U6
D	18	TYR	-	EXPRESSION TAG	UNP A5K4U6
D	19	PHE	-	EXPRESSION TAG	UNP A5K4U6
D	20	GLN	-	EXPRESSION TAG	UNP A5K4U6
D	21	GLY	-	EXPRESSION TAG	UNP A5K4U6
D	134	MET	THR	SEE REMARK 999	UNP A5K4U6
D	227	ASP	ASN	SEE REMARK 999	UNP A5K4U6

- Molecule 2 is ZOLEDRONIC ACID (three-letter code: ZOL) (formula: C<sub>5</sub>H<sub>10</sub>N<sub>2</sub>O<sub>7</sub>P<sub>2</sub>).



Mol	Chain	Residues	Atoms					ZeroOcc	AltConf
			Total	C	N	O	P		
2	A	1	Total	C	N	O	P	0	0
			16	5	2	7	2		
2	B	1	Total	C	N	O	P	0	0
			16	5	2	7	2		
2	C	1	Total	C	N	O	P	0	0
			16	5	2	7	2		
2	D	1	Total	C	N	O	P	0	0
			16	5	2	7	2		

- Molecule 3 is 3-METHYLBUT-3-ENYL TRIHYDROGEN DIPHOSPHATE (three-letter code: IPE) (formula:  $C_5H_{12}O_7P_2$ ).

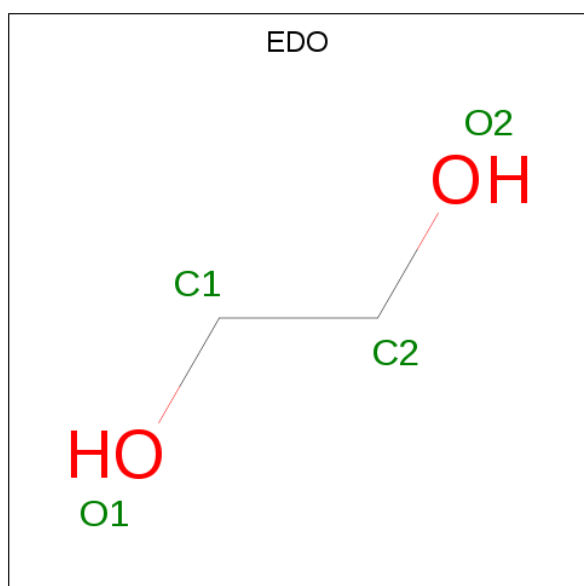


Mol	Chain	Residues	Atoms				ZeroOcc	AltConf
3	A	1	Total	C	O	P	0	0
			14	5	7	2		
3	B	1	Total	C	O	P	0	0
			14	5	7	2		
3	C	1	Total	C	O	P	0	0
			14	5	7	2		
3	D	1	Total	C	O	P	0	0
			14	5	7	2		

- Molecule 4 is MAGNESIUM ION (three-letter code: MG) (formula: Mg).

Mol	Chain	Residues	Atoms		ZeroOcc	AltConf
4	B	3	Total	Mg	0	0
			3	3		
4	A	3	Total	Mg	0	0
			3	3		
4	D	3	Total	Mg	0	0
			3	3		
4	C	3	Total	Mg	0	0
			3	3		

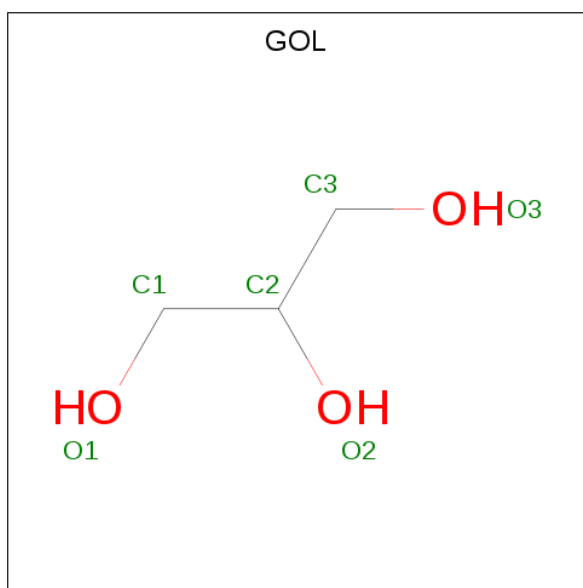
- Molecule 5 is 1,2-ETHANEDIOL (three-letter code: EDO) (formula: C<sub>2</sub>H<sub>6</sub>O<sub>2</sub>).



Mol	Chain	Residues	Atoms			ZeroOcc	AltConf
5	A	1	Total	C	O	0	0
			4	2	2		
5	B	1	Total	C	O	0	0
			4	2	2		



- Molecule 6 is GLYCEROL (three-letter code: GOL) (formula: C<sub>3</sub>H<sub>8</sub>O<sub>3</sub>).



Mol	Chain	Residues	Atoms	ZeroOcc	AltConf
6	A	1	Total C O 6 3 3	0	0
6	B	1	Total C O 6 3 3	0	0
6	D	1	Total C O 6 3 3	0	0

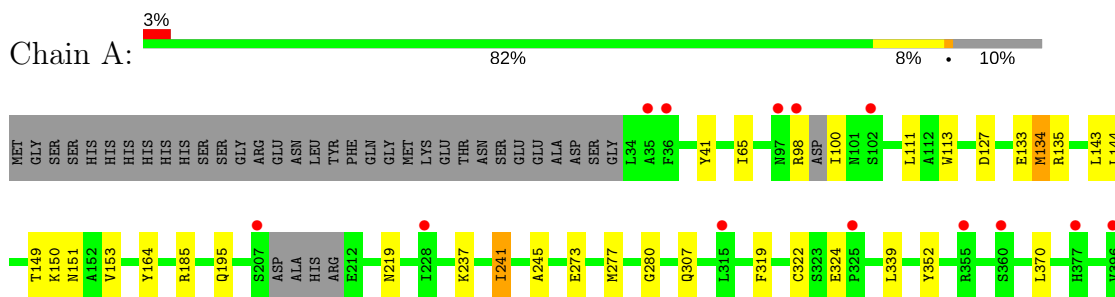
- Molecule 7 is water.

Mol	Chain	Residues	Atoms	ZeroOcc	AltConf
7	A	144	Total O 144 144	0	0
7	B	144	Total O 144 144	0	0
7	C	143	Total O 143 143	0	0
7	D	131	Total O 131 131	0	0

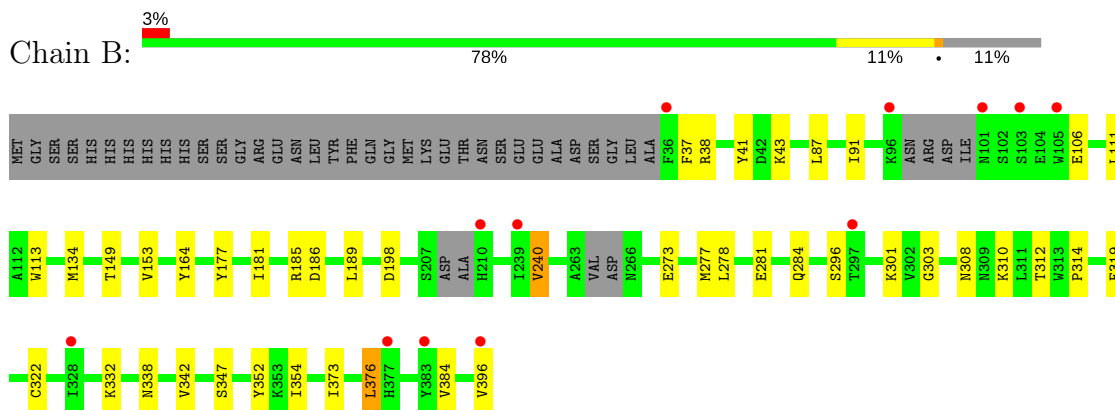
### 3 Residue-property plots [i](#)

These plots are drawn for all protein, RNA and DNA chains in the entry. The first graphic for a chain summarises the proportions of the various outlier classes displayed in the second graphic. The second graphic shows the sequence view annotated by issues in geometry and electron density. Residues are color-coded according to the number of geometric quality criteria for which they contain at least one outlier: green = 0, yellow = 1, orange = 2 and red = 3 or more. A red dot above a residue indicates a poor fit to the electron density ( $RSRZ > 2$ ). Stretches of 2 or more consecutive residues without any outlier are shown as a green connector. Residues present in the sample, but not in the model, are shown in grey.

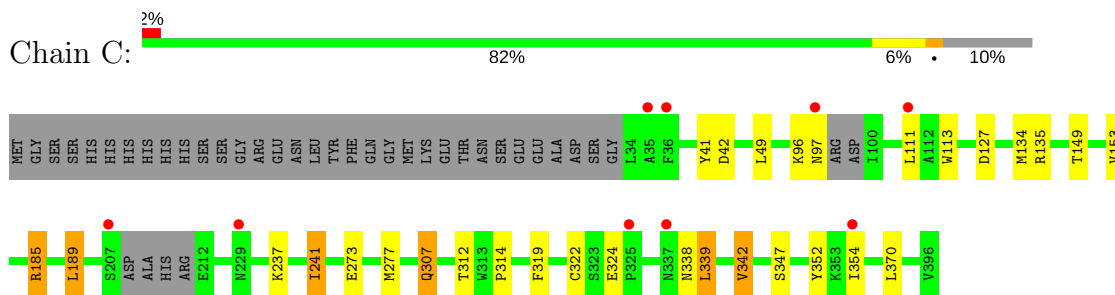
- Molecule 1: Farnesyl pyrophosphate synthase



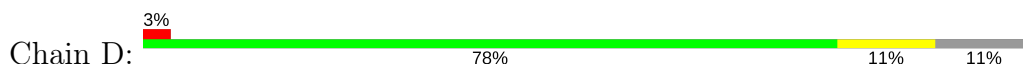
- Molecule 1: Farnesyl pyrophosphate synthase

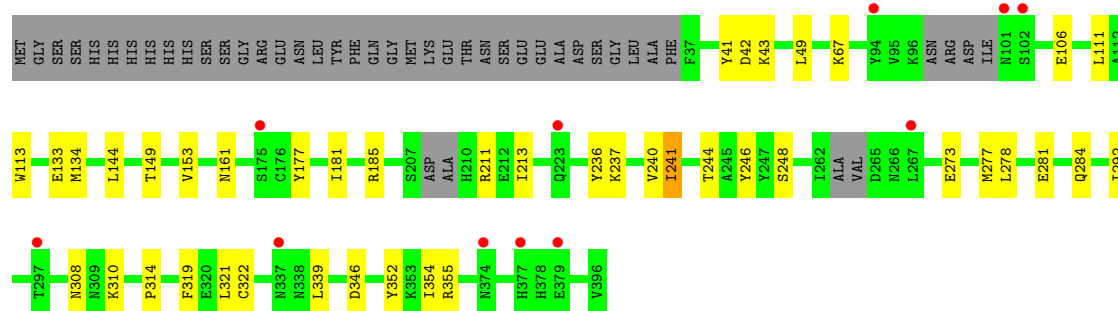


- Molecule 1: Farnesyl pyrophosphate synthase



- Molecule 1: Farnesyl pyrophosphate synthase





## 4 Data and refinement statistics i

Property	Value	Source
Space group	P 21 21 21	Depositor
Cell constants a, b, c, $\alpha$ , $\beta$ , $\gamma$	111.26Å 139.54Å 109.71Å 90.00° 90.00° 90.00°	Depositor
Resolution (Å)	20.24 – 2.47 20.07 – 2.47	Depositor EDS
% Data completeness (in resolution range)	(Not available) (20.24-2.47) 98.5 (20.07-2.47)	Depositor EDS
$R_{merge}$	0.17	Depositor
$R_{sym}$	0.12	Depositor
$\langle I/\sigma(I) \rangle$ <sup>1</sup>	2.06 (at 2.47Å)	Xtrriage
Refinement program	BUSTER 2.8.0	Depositor
R, $R_{free}$	0.239 , 0.286 0.222 , 0.266	Depositor DCC
$R_{free}$ test set	3026 reflections (4.98%)	wwPDB-VP
Wilson B-factor (Å <sup>2</sup> )	31.3	Xtrriage
Anisotropy	0.087	Xtrriage
Bulk solvent $k_{sol}$ (e/Å <sup>3</sup> ), $B_{sol}$ (Å <sup>2</sup> )	0.33 , 54.0	EDS
L-test for twinning <sup>2</sup>	$\langle  L  \rangle = 0.51$ , $\langle L^2 \rangle = 0.35$	Xtrriage
Estimated twinning fraction	0.000 for l,-k,h	Xtrriage
$F_o, F_c$ correlation	0.95	EDS
Total number of atoms	12338	wwPDB-VP
Average B, all atoms (Å <sup>2</sup> )	34.0	wwPDB-VP

Xtrriage's analysis on translational NCS is as follows: *The analyses of the Patterson function reveals a significant off-origin peak that is 49.15 % of the origin peak, indicating pseudo-translational symmetry. The chance of finding a peak of this or larger height randomly in a structure without pseudo-translational symmetry is equal to 7.7723e-05. The detected translational NCS is most likely also responsible for the elevated intensity ratio.*

<sup>1</sup>Intensities estimated from amplitudes.

<sup>2</sup>Theoretical values of  $\langle |L| \rangle$ ,  $\langle L^2 \rangle$  for acentric reflections are 0.5, 0.333 respectively for untwinned datasets, and 0.375, 0.2 for perfectly twinned datasets.

## 5 Model quality [i](#)

### 5.1 Standard geometry [i](#)

Bond lengths and bond angles in the following residue types are not validated in this section: GOL, MG, ZOL, EDO, IPE

The Z score for a bond length (or angle) is the number of standard deviations the observed value is removed from the expected value. A bond length (or angle) with  $|Z| > 5$  is considered an outlier worth inspection. RMSZ is the root-mean-square of all Z scores of the bond lengths (or angles).

Mol	Chain	Bond lengths		Bond angles	
		RMSZ	# Z  >5	RMSZ	# Z  >5
1	A	0.50	0/2986	0.68	0/4036
1	B	0.50	0/2970	0.68	0/4013
1	C	0.50	0/2994	0.67	0/4048
1	D	0.50	0/2953	0.68	0/3990
All	All	0.50	0/11903	0.68	0/16087

There are no bond length outliers.

There are no bond angle outliers.

There are no chirality outliers.

There are no planarity outliers.

### 5.2 Too-close contacts [i](#)

In the following table, the Non-H and H(model) columns list the number of non-hydrogen atoms and hydrogen atoms in the chain respectively. The H(added) column lists the number of hydrogen atoms added and optimized by MolProbity. The Clashes column lists the number of clashes within the asymmetric unit, whereas Symm-Clashes lists symmetry related clashes.

Mol	Chain	Non-H	H(model)	H(added)	Clashes	Symm-Clashes
1	A	2917	0	2857	17	0
1	B	2899	0	2859	31	0
1	C	2919	0	2889	15	0
1	D	2883	0	2835	22	0
2	A	16	0	6	0	0
2	B	16	0	6	1	0
2	C	16	0	6	0	0
2	D	16	0	6	0	0
3	A	14	0	9	0	0

*Continued on next page...*

Continued from previous page...

Mol	Chain	Non-H	H(model)	H(added)	Clashes	Symm-Clashes
3	B	14	0	9	0	0
3	C	14	0	9	0	0
3	D	14	0	9	0	0
4	A	3	0	0	0	0
4	B	3	0	0	0	0
4	C	3	0	0	0	0
4	D	3	0	0	0	0
5	A	4	0	6	0	0
5	B	4	0	6	3	0
6	A	6	0	8	2	0
6	B	6	0	8	5	0
6	D	6	0	8	1	0
7	A	144	0	0	2	0
7	B	144	0	0	0	0
7	C	143	0	0	0	0
7	D	131	0	0	2	0
All	All	12338	0	11536	81	0

The all-atom clashscore is defined as the number of clashes found per 1000 atoms (including hydrogen atoms). The all-atom clashscore for this structure is 3.

All (81) close contacts within the same asymmetric unit are listed below, sorted by their clash magnitude.

Atom-1	Atom-2	Interatomic distance (Å)	Clash overlap (Å)
1:D:292:ILE:HD11	7:D:1164:HOH:O	1.54	1.08
1:B:91:ILE:HD12	1:B:384:VAL:HG11	1.48	0.94
1:A:133:GLU:HG2	6:A:1106:GOL:H2	1.55	0.88
1:B:240:VAL:HG22	1:B:284:GLN:HG2	1.65	0.78
1:B:342:VAL:HG23	1:D:339:LEU:HD13	1.65	0.76
1:B:303:GLY:H	6:B:1105:GOL:H31	1.50	0.74
1:D:240:VAL:HG22	1:D:284:GLN:HG2	1.69	0.73
1:B:87:LEU:HD12	1:B:91:ILE:HD13	1.74	0.69
1:B:43:LYS:HE2	1:B:106:GLU:HG3	1.78	0.66
1:B:301:LYS:HG3	5:B:1106:EDO:H22	1.77	0.65
1:D:43:LYS:HE2	1:D:106:GLU:HG3	1.79	0.64
1:D:241:ILE:HG23	1:D:277:MET:HE1	1.80	0.64
1:D:241:ILE:HG23	1:D:277:MET:CE	2.32	0.60
1:A:134:MET:HG2	7:A:1232:HOH:O	2.01	0.59
1:B:338:ASN:HD21	1:D:133:GLU:CD	2.06	0.58
1:B:87:LEU:HD12	1:B:91:ILE:CD1	2.35	0.57
1:D:185[A]:ARG:NH2	7:D:1199:HOH:O	2.38	0.56

Continued on next page...

*Continued from previous page...*

Atom-1	Atom-2	Interatomic distance (Å)	Clash overlap (Å)
1:B:373:ILE:O	1:B:376:LEU:HB2	2.07	0.55
1:A:164:TYR:OH	1:A:185[A]:ARG:HG3	2.07	0.55
1:A:195:GLN:NE2	7:A:1161:HOH:O	2.40	0.54
1:B:303:GLY:N	6:B:1105:GOL:H12	2.25	0.52
1:B:303:GLY:H	6:B:1105:GOL:C3	2.19	0.52
1:B:87:LEU:CD1	1:B:91:ILE:HD13	2.41	0.51
1:C:189[A]:LEU:HD13	1:D:161:ASN:HB3	1.92	0.51
1:B:296:SER:HB3	6:B:1105:GOL:H32	1.94	0.49
1:D:273:GLU:O	1:D:277:MET:HG2	2.14	0.48
1:B:177:TYR:CZ	1:B:181:ILE:HD11	2.49	0.47
1:D:41:TYR:HB2	1:D:113:TRP:CZ2	2.49	0.47
1:C:273:GLU:O	1:C:277:MET:HG2	2.14	0.47
1:B:273:GLU:O	1:B:277:MET:HG2	2.14	0.47
1:A:273:GLU:O	1:A:277:MET:HG2	2.15	0.47
1:D:177:TYR:CZ	1:D:181:ILE:HD11	2.50	0.47
1:C:322:CYS:HA	1:C:352:TYR:CE2	2.50	0.47
1:B:41:TYR:HB2	1:B:113:TRP:CZ2	2.50	0.46
1:C:127:ASP:OD2	1:C:135:ARG:HD2	2.14	0.46
1:A:98:ARG:O	1:A:100:ILE:N	2.48	0.46
1:C:185[A]:ARG:HB2	1:C:185[A]:ARG:HH11	1.80	0.46
1:B:303:GLY:HA2	5:B:1106:EDO:H21	1.96	0.46
1:A:185[A]:ARG:HD2	1:B:164:TYR:HB2	1.97	0.46
1:A:41:TYR:HB2	1:A:113:TRP:CZ2	2.51	0.45
1:A:127:ASP:OD2	1:A:135:ARG:HD2	2.16	0.45
1:A:150[B]:LYS:HG2	1:A:151:ASN:N	2.32	0.45
1:C:338:ASN:O	1:C:342:VAL:HG13	2.16	0.45
1:A:143:LEU:HD13	6:A:1106:GOL:H32	1.98	0.45
1:D:346:ASP:OD1	6:D:1105:GOL:H11	2.16	0.45
1:D:322:CYS:HA	1:D:352:TYR:CE1	2.51	0.45
1:C:237:LYS:O	1:C:241:ILE:HB	2.16	0.45
1:C:41:TYR:HB2	1:C:113:TRP:CZ2	2.51	0.45
1:B:312:THR:HB	1:B:314:PRO:HD2	1.99	0.45
1:B:91:ILE:HD12	1:B:384:VAL:CG1	2.33	0.45
1:D:246:TYR:CE1	1:D:277:MET:HE1	2.52	0.45
1:A:322:CYS:HA	1:A:352:TYR:CE2	2.51	0.45
1:C:149:THR:O	1:C:153[A]:VAL:HG23	2.16	0.45
1:D:237:LYS:O	1:D:241:ILE:HB	2.17	0.44
1:C:307:GLN:HE21	1:C:307:GLN:H	1.66	0.44
1:D:240:VAL:CG1	1:D:281:GLU:HA	2.47	0.44
1:B:314:PRO:HB3	1:B:354:ILE:HG21	1.98	0.44
1:B:322:CYS:HA	1:B:352:TYR:CE1	2.52	0.44

*Continued on next page...*

Continued from previous page...

Atom-1	Atom-2	Interatomic distance (Å)	Clash overlap (Å)
1:D:314:PRO:HB3	1:D:354:ILE:HG21	2.00	0.44
1:B:303:GLY:H	6:B:1105:GOL:H12	1.83	0.43
1:B:240:VAL:HG22	1:B:284:GLN:CG	2.43	0.43
1:A:237:LYS:O	1:A:241:ILE:HB	2.17	0.43
1:B:87:LEU:CD1	1:B:91:ILE:CD1	2.96	0.43
1:D:149:THR:O	1:D:153:VAL:HG23	2.18	0.43
1:A:149:THR:O	1:A:153:VAL:HG23	2.18	0.43
1:C:314:PRO:HB3	1:C:354:ILE:HG21	2.01	0.42
1:A:245:ALA:HB2	1:A:280:GLY:HA3	2.01	0.42
1:D:308:ASN:HB3	1:D:310:LYS:HE2	2.01	0.42
1:C:189[A]:LEU:HA	1:C:189[A]:LEU:HD12	1.93	0.42
1:B:91:ILE:CD1	1:B:384:VAL:HG11	2.34	0.42
1:D:236:TYR:CZ	1:D:240:VAL:HG21	2.55	0.42
1:B:149:THR:O	1:B:153:VAL:HG23	2.20	0.41
2:B:397:ZOL:O16	5:B:1106:EDO:H11	2.20	0.41
1:C:96:LYS:HA	1:C:96:LYS:HE2	2.01	0.41
1:B:240:VAL:CG1	1:B:281:GLU:HA	2.51	0.41
1:B:185[A]:ARG:NH2	1:B:186:ASP:OD1	2.53	0.41
1:C:312:THR:HB	1:C:314:PRO:HD2	2.03	0.41
1:D:244:THR:O	1:D:248:SER:HB2	2.21	0.41
1:B:308:ASN:HB3	1:B:310:LYS:HE2	2.02	0.40
1:A:219[B]:ASN:H	1:A:219[B]:ASN:HD22	1.70	0.40
1:A:307:GLN:OE1	1:C:339:LEU:HD22	2.21	0.40

There are no symmetry-related clashes.

## 5.3 Torsion angles [i](#)

### 5.3.1 Protein backbone [i](#)

In the following table, the Percentiles column shows the percent Ramachandran outliers of the chain as a percentile score with respect to all X-ray entries followed by that with respect to entries of similar resolution.

The Analysed column shows the number of residues for which the backbone conformation was analysed, and the total number of residues.

Mol	Chain	Analysed	Favoured	Allowed	Outliers	Percentiles
1	A	356/396 (90%)	347 (98%)	9 (2%)	0	100 100
1	B	348/396 (88%)	341 (98%)	7 (2%)	0	100 100

Continued on next page...



*Continued from previous page...*

Mol	Chain	Analysed	Favoured	Allowed	Outliers	Percentiles	
1	C	356/396 (90%)	348 (98%)	8 (2%)	0	100	100
1	D	348/396 (88%)	341 (98%)	7 (2%)	0	100	100
All	All	1408/1584 (89%)	1377 (98%)	31 (2%)	0	100	100

There are no Ramachandran outliers to report.

### 5.3.2 Protein sidechains [i](#)

In the following table, the Percentiles column shows the percent sidechain outliers of the chain as a percentile score with respect to all X-ray entries followed by that with respect to entries of similar resolution.

The Analysed column shows the number of residues for which the sidechain conformation was analysed, and the total number of residues.

Mol	Chain	Analysed	Rotameric	Outliers	Percentiles	
1	A	310/357 (87%)	301 (97%)	9 (3%)	45	70
1	B	307/357 (86%)	294 (96%)	13 (4%)	32	55
1	C	310/357 (87%)	293 (94%)	17 (6%)	24	42
1	D	308/357 (86%)	295 (96%)	13 (4%)	32	55
All	All	1235/1428 (86%)	1183 (96%)	52 (4%)	33	55

All (52) residues with a non-rotameric sidechain are listed below:

Mol	Chain	Res	Type
1	A	65	ILE
1	A	111	LEU
1	A	134	MET
1	A	144	LEU
1	A	241	ILE
1	A	319	PHE
1	A	324	GLU
1	A	339	LEU
1	A	370	LEU
1	B	37	PHE
1	B	38	ARG
1	B	111	LEU
1	B	134	MET
1	B	189	LEU

*Continued on next page...*

*Continued from previous page...*

<b>Mol</b>	<b>Chain</b>	<b>Res</b>	<b>Type</b>
1	B	198	ASP
1	B	240	VAL
1	B	278	LEU
1	B	319	PHE
1	B	332	LYS
1	B	347	SER
1	B	376	LEU
1	B	396	VAL
1	C	42	ASP
1	C	49	LEU
1	C	97	ASN
1	C	111	LEU
1	C	134	MET
1	C	185[A]	ARG
1	C	185[B]	ARG
1	C	189[A]	LEU
1	C	189[B]	LEU
1	C	241	ILE
1	C	307	GLN
1	C	319	PHE
1	C	324	GLU
1	C	339	LEU
1	C	342	VAL
1	C	347	SER
1	C	370	LEU
1	D	42	ASP
1	D	49	LEU
1	D	67	LYS
1	D	111	LEU
1	D	134	MET
1	D	144	LEU
1	D	211	ARG
1	D	213	ILE
1	D	241	ILE
1	D	278	LEU
1	D	319	PHE
1	D	321	LEU
1	D	355	ARG

Some sidechains can be flipped to improve hydrogen bonding and reduce clashes. All (5) such sidechains are listed below:

Mol	Chain	Res	Type
1	B	82	ASN
1	B	307	GLN
1	C	82	ASN
1	C	307	GLN
1	D	82	ASN

### 5.3.3 RNA [i](#)

There are no RNA molecules in this entry.

### 5.4 Non-standard residues in protein, DNA, RNA chains [i](#)

There are no non-standard protein/DNA/RNA residues in this entry.

### 5.5 Carbohydrates [i](#)

There are no carbohydrates in this entry.

### 5.6 Ligand geometry [i](#)

Of 25 ligands modelled in this entry, 12 are monoatomic - leaving 13 for Mogul analysis.

In the following table, the Counts columns list the number of bonds (or angles) for which Mogul statistics could be retrieved, the number of bonds (or angles) that are observed in the model and the number of bonds (or angles) that are defined in the Chemical Component Dictionary. The Link column lists molecule types, if any, to which the group is linked. The Z score for a bond length (or angle) is the number of standard deviations the observed value is removed from the expected value. A bond length (or angle) with  $|Z| > 2$  is considered an outlier worth inspection. RMSZ is the root-mean-square of all Z scores of the bond lengths (or angles).

Mol	Type	Chain	Res	Link	Bond lengths			Bond angles		
					Counts	RMSZ	# Z  > 2	Counts	RMSZ	# Z  > 2
3	IPE	A	1101	-	12,13,13	2.25	2 (16%)	13,19,19	0.94	0
5	EDO	A	1105	-	3,3,3	0.55	0	2,2,2	0.15	0
6	GOL	A	1106	-	5,5,5	0.90	0	5,5,5	0.98	0
2	ZOL	A	397	4	15,16,16	3.28	9 (60%)	20,26,26	1.88	7 (35%)
3	IPE	B	1101	-	12,13,13	2.20	2 (16%)	13,19,19	0.93	0
6	GOL	B	1105	-	5,5,5	0.40	0	5,5,5	1.30	0
5	EDO	B	1106	-	3,3,3	0.69	0	2,2,2	0.44	0
2	ZOL	B	397	4	15,16,16	3.26	9 (60%)	20,26,26	2.05	8 (40%)
3	IPE	C	1101	-	12,13,13	2.16	2 (16%)	13,19,19	1.05	0

Mol	Type	Chain	Res	Link	Bond lengths			Bond angles		
					Counts	RMSZ	# Z  > 2	Counts	RMSZ	# Z  > 2
2	ZOL	C	397	4	15,16,16	3.36	9 (60%)	20,26,26	2.15	7 (35%)
3	IPE	D	1101	-	12,13,13	2.25	2 (16%)	13,19,19	0.92	0
6	GOL	D	1105	-	5,5,5	0.86	0	5,5,5	1.49	2 (40%)
2	ZOL	D	397	4	15,16,16	3.90	10 (66%)	20,26,26	2.09	6 (30%)

In the following table, the Chirals column lists the number of chiral outliers, the number of chiral centers analysed, the number of these observed in the model and the number defined in the Chemical Component Dictionary. Similar counts are reported in the Torsion and Rings columns. '-' means no outliers of that kind were identified.

Mol	Type	Chain	Res	Link	Chirals	Torsions	Rings
3	IPE	A	1101	-	-	0/13/13/13	0/0/0/0
5	EDO	A	1105	-	-	0/1/1/1	0/0/0/0
6	GOL	A	1106	-	-	0/4/4/4	0/0/0/0
2	ZOL	A	397	4	-	0/23/23/23	0/1/1/1
3	IPE	B	1101	-	-	0/13/13/13	0/0/0/0
6	GOL	B	1105	-	-	0/4/4/4	0/0/0/0
5	EDO	B	1106	-	-	0/1/1/1	0/0/0/0
2	ZOL	B	397	4	-	0/23/23/23	0/1/1/1
3	IPE	C	1101	-	-	0/13/13/13	0/0/0/0
2	ZOL	C	397	4	-	0/23/23/23	0/1/1/1
3	IPE	D	1101	-	-	0/13/13/13	0/0/0/0
6	GOL	D	1105	-	-	0/4/4/4	0/0/0/0
2	ZOL	D	397	4	-	0/23/23/23	0/1/1/1

All (45) bond length outliers are listed below:

Mol	Chain	Res	Type	Atoms	Z	Observed(Å)	Ideal(Å)
2	D	397	ZOL	P14-O17	-4.26	1.46	1.54
2	A	397	ZOL	P9-O10	-4.03	1.47	1.54
3	B	1101	IPE	C5-C3	-3.79	1.33	1.48
3	D	1101	IPE	C5-C3	-3.77	1.33	1.48
3	A	1101	IPE	C5-C3	-3.77	1.33	1.48
2	A	397	ZOL	P14-O17	-3.77	1.47	1.54
3	C	1101	IPE	C5-C3	-3.66	1.33	1.48
2	C	397	ZOL	P9-O10	-3.50	1.48	1.54
2	A	397	ZOL	C16-N15	-3.40	1.32	1.36
2	B	397	ZOL	P9-O10	-3.27	1.48	1.54
2	C	397	ZOL	P14-O17	-3.21	1.48	1.54
2	D	397	ZOL	C16-N15	-3.13	1.33	1.36
2	D	397	ZOL	P9-O10	-3.13	1.49	1.54

Continued on next page...

Continued from previous page...

Mol	Chain	Res	Type	Atoms	Z	Observed(Å)	Ideal(Å)
2	B	397	ZOL	C16-N15	-3.07	1.33	1.36
2	C	397	ZOL	C16-N15	-2.96	1.33	1.36
2	B	397	ZOL	P14-O17	-2.59	1.50	1.54
2	A	397	ZOL	C19-N15	-2.53	1.33	1.37
2	D	397	ZOL	C19-N15	-2.39	1.33	1.37
2	C	397	ZOL	C19-N15	-2.13	1.33	1.37
2	B	397	ZOL	C19-N15	-2.09	1.33	1.37
2	B	397	ZOL	P9-O11	2.16	1.58	1.54
2	A	397	ZOL	P14-C8	2.20	1.86	1.85
2	C	397	ZOL	P14-C8	3.27	1.87	1.85
2	D	397	ZOL	P14-C8	3.70	1.87	1.85
2	D	397	ZOL	P14-O16	3.80	1.61	1.54
2	C	397	ZOL	P9-O11	3.87	1.61	1.54
2	A	397	ZOL	P14-O16	4.23	1.62	1.54
2	B	397	ZOL	P14-O16	4.25	1.62	1.54
2	B	397	ZOL	P9-C8	4.42	1.88	1.85
2	A	397	ZOL	P14-O15	4.43	1.57	1.50
2	C	397	ZOL	P14-O16	4.47	1.63	1.54
2	D	397	ZOL	P9-O11	4.66	1.63	1.54
2	A	397	ZOL	P9-O11	4.70	1.63	1.54
2	D	397	ZOL	P9-O12	5.88	1.59	1.50
2	B	397	ZOL	P14-O15	5.93	1.59	1.50
2	C	397	ZOL	P14-O15	5.95	1.59	1.50
3	C	1101	IPE	C4-C3	6.04	1.50	1.33
3	B	1101	IPE	C4-C3	6.27	1.51	1.33
3	A	1101	IPE	C4-C3	6.39	1.51	1.33
3	D	1101	IPE	C4-C3	6.43	1.51	1.33
2	D	397	ZOL	P9-C8	6.51	1.89	1.85
2	A	397	ZOL	P9-O12	6.54	1.60	1.50
2	B	397	ZOL	P9-O12	6.82	1.61	1.50
2	C	397	ZOL	P9-O12	7.07	1.61	1.50
2	D	397	ZOL	P14-O15	7.43	1.62	1.50

All (30) bond angle outliers are listed below:

Mol	Chain	Res	Type	Atoms	Z	Observed(°)	Ideal(°)
2	D	397	ZOL	O16-P14-O15	-4.92	102.00	113.07
2	C	397	ZOL	P9-C8-P14	-4.38	104.97	112.81
2	C	397	ZOL	O16-P14-O15	-3.65	104.86	113.07
2	D	397	ZOL	O11-P9-O12	-3.57	105.04	113.07
2	D	397	ZOL	O15-P14-C8	-3.38	101.02	109.86
2	A	397	ZOL	O15-P14-C8	-3.17	101.58	109.86

Continued on next page...

Continued from previous page...

Mol	Chain	Res	Type	Atoms	Z	Observed(°)	Ideal(°)
2	B	397	ZOL	P9-C8-P14	-3.10	107.27	112.81
2	A	397	ZOL	O16-P14-O15	-2.95	106.44	113.07
2	A	397	ZOL	P9-C8-P14	-2.91	107.59	112.81
2	C	397	ZOL	O11-P9-O12	-2.78	106.81	113.07
2	A	397	ZOL	O11-P9-O12	-2.71	106.97	113.07
2	B	397	ZOL	O16-P14-C8	-2.68	100.16	106.17
2	B	397	ZOL	O11-P9-O12	-2.64	107.13	113.07
2	A	397	ZOL	O10-P9-C8	2.03	110.71	106.17
2	B	397	ZOL	O16-P14-O17	2.03	113.75	108.00
2	A	397	ZOL	O11-P9-O10	2.04	113.76	108.00
6	D	1105	GOL	O1-C1-C2	2.05	120.05	110.11
2	B	397	ZOL	C19-N15-C16	2.11	110.29	108.21
2	B	397	ZOL	O11-P9-O10	2.23	114.30	108.00
2	D	397	ZOL	O11-P9-O10	2.33	114.60	108.00
6	D	1105	GOL	O2-C2-C1	2.36	119.77	109.00
2	C	397	ZOL	O16-P14-O17	2.67	115.54	108.00
2	C	397	ZOL	O11-P9-O10	2.68	115.59	108.00
2	D	397	ZOL	O16-P14-C8	2.73	112.29	106.17
2	C	397	ZOL	O10-P9-C8	3.00	112.90	106.17
2	D	397	ZOL	O17-P14-C8	3.40	113.80	106.17
2	B	397	ZOL	O10-P9-C8	3.64	114.33	106.17
2	C	397	ZOL	O17-P14-C8	3.83	114.75	106.17
2	B	397	ZOL	O17-P14-C8	4.35	115.92	106.17
2	A	397	ZOL	O17-P14-C8	4.56	116.40	106.17

There are no chirality outliers.

There are no torsion outliers.

There are no ring outliers.

5 monomers are involved in 11 short contacts:

Mol	Chain	Res	Type	Clashes	Symm-Clashes
6	A	1106	GOL	2	0
6	B	1105	GOL	5	0
5	B	1106	EDO	3	0
2	B	397	ZOL	1	0
6	D	1105	GOL	1	0

## 5.7 Other polymers

There are no such residues in this entry.

## 5.8 Polymer linkage issues

There are no chain breaks in this entry.

## 6 Fit of model and data [i](#)

### 6.1 Protein, DNA and RNA chains [i](#)

In the following table, the column labelled ‘#RSRZ > 2’ contains the number (and percentage) of RSRZ outliers, followed by percent RSRZ outliers for the chain as percentile scores relative to all X-ray entries and entries of similar resolution. The OWAB column contains the minimum, median, 95<sup>th</sup> percentile and maximum values of the occupancy-weighted average B-factor per residue. The column labelled ‘Q < 0.9’ lists the number of (and percentage) of residues with an average occupancy less than 0.9.

Mol	Chain	Analysed	<RSRZ>	#RSRZ>2	OWAB(Å <sup>2</sup> )	Q<0.9
1	A	358/396 (90%)	0.10	13 (3%) 42 45	20, 34, 54, 76	12 (3%)
1	B	353/396 (89%)	0.10	12 (3%) 45 47	19, 32, 50, 72	10 (2%)
1	C	357/396 (90%)	0.07	9 (2%) 57 59	19, 33, 52, 83	8 (2%)
1	D	352/396 (88%)	0.11	11 (3%) 49 51	19, 33, 53, 76	4 (1%)
All	All	1420/1584 (89%)	0.10	45 (3%) 47 50	19, 33, 53, 83	34 (2%)

All (45) RSRZ outliers are listed below:

Mol	Chain	Res	Type	RSRZ
1	B	396	VAL	4.5
1	B	105[A]	TRP	4.3
1	D	267	LEU	3.9
1	A	315	LEU	3.8
1	D	102	SER	3.8
1	B	36	PHE	3.6
1	A	325	PRO	3.6
1	D	101	ASN	3.4
1	A	97	ASN	3.4
1	C	35	ALA	3.3
1	A	35	ALA	3.1
1	D	374	ASN	3.0
1	C	207	SER	3.0
1	A	377	HIS	3.0
1	C	325	PRO	3.0
1	D	297	THR	2.9
1	B	297	THR	2.8
1	D	377	HIS	2.7
1	D	337	ASN	2.6
1	B	377	HIS	2.6
1	A	355	ARG	2.6

*Continued on next page...*



*Continued from previous page...*

Mol	Chain	Res	Type	RSRZ
1	A	396	VAL	2.6
1	B	96	LYS	2.6
1	D	94	TYR	2.5
1	A	98	ARG	2.4
1	A	102	SER	2.4
1	C	229	ASN	2.4
1	D	223	GLN	2.3
1	C	97	ASN	2.2
1	B	103	SER	2.2
1	B	210	HIS	2.2
1	A	36	PHE	2.2
1	B	328	ILE	2.2
1	C	337	ASN	2.1
1	A	360	SER	2.1
1	B	239	ILE	2.1
1	C	36	PHE	2.1
1	D	175	SER	2.1
1	B	383	TYR	2.1
1	B	101	ASN	2.1
1	C	111	LEU	2.1
1	C	354	ILE	2.1
1	A	207	SER	2.0
1	A	228	ILE	2.0
1	D	379	GLU	2.0

## 6.2 Non-standard residues in protein, DNA, RNA chains [i](#)

There are no non-standard protein/DNA/RNA residues in this entry.

## 6.3 Carbohydrates [i](#)

There are no carbohydrates in this entry.

## 6.4 Ligands [i](#)

In the following table, the Atoms column lists the number of modelled atoms in the group and the number defined in the chemical component dictionary. The B-factors column lists the minimum, median, 95<sup>th</sup> percentile and maximum values of B factors of atoms in the group. The column labelled 'Q< 0.9' lists the number of atoms with occupancy less than 0.9.

Mol	Type	Chain	Res	Atoms	RSCC	RSR	B-factors( $\text{\AA}^2$ )	Q<0.9
5	EDO	A	1105	4/4	0.37	0.32	72,72,73,76	0
5	EDO	B	1106	4/4	0.71	0.46	37,38,38,39	0
6	GOL	A	1106	6/6	0.74	0.33	60,63,64,66	0
6	GOL	D	1105	6/6	0.85	0.36	49,51,51,52	0
6	GOL	B	1105	6/6	0.92	0.24	45,47,48,48	0
4	MG	C	1103	1/1	0.95	0.05	27,27,27,27	0
4	MG	B	1102	1/1	0.96	0.06	21,21,21,21	0
4	MG	A	1103	1/1	0.96	0.05	22,22,22,22	0
4	MG	C	1102	1/1	0.97	0.07	23,23,23,23	0
4	MG	A	1102	1/1	0.97	0.04	21,21,21,21	0
3	IPE	C	1101	14/14	0.97	0.13	3,25,39,41	3
4	MG	B	1104	1/1	0.97	0.08	15,15,15,15	0
4	MG	D	1104	1/1	0.98	0.06	16,16,16,16	0
2	ZOL	C	397	16/16	0.98	0.09	7,23,38,45	0
2	ZOL	B	397	16/16	0.98	0.10	11,23,31,50	0
3	IPE	B	1101	14/14	0.98	0.11	11,28,47,59	0
3	IPE	D	1101	14/14	0.98	0.09	15,27,53,57	0
3	IPE	A	1101	14/14	0.98	0.11	17,28,38,38	0
4	MG	D	1102	1/1	0.98	0.03	17,17,17,17	0
4	MG	B	1103	1/1	0.98	0.11	16,16,16,16	0
2	ZOL	A	397	16/16	0.99	0.08	15,21,37,43	0
2	ZOL	D	397	16/16	0.99	0.08	10,24,29,31	0
4	MG	A	1104	1/1	0.99	0.08	23,23,23,23	0
4	MG	C	1104	1/1	0.99	0.10	27,27,27,27	0
4	MG	D	1103	1/1	1.00	0.07	18,18,18,18	0

## 6.5 Other polymers [i](#)

There are no such residues in this entry.