



Full wwPDB X-ray Structure Validation Report ⓘ

Mar 8, 2018 – 04:47 pm GMT

PDB ID : 3LEV
Title : HIV-1 antibody 2F5 in complex with epitope scaffold ES2
Authors : Ofek, G.; Guenaga, F.J.; Schief, W.R.; Skinner, J.; Baker, D.; Wyatt, R.;
Kwong, P.D.
Deposited on : 2010-01-15
Resolution : 2.50 Å(reported)

This is a Full wwPDB X-ray Structure Validation Report for a publicly released PDB entry.

We welcome your comments at validation@mail.wwpdb.org

A user guide is available at

<https://www.wwpdb.org/validation/2017/XrayValidationReportHelp>

with specific help available everywhere you see the ⓘ symbol.

The following versions of software and data (see [references ⓘ](#)) were used in the production of this report:

MolProbity : 4.02b-467
Mogul : 1.7.3 (157068), CSD as539be (2018)
Xtriage (Phenix) : 1.13
EDS : trunk30967
Percentile statistics : 20171227.v01 (using entries in the PDB archive December 27th 2017)
Refmac : 5.8.0158
CCP4 : 7.0 (Gargrove)
Ideal geometry (proteins) : Engh & Huber (2001)
Ideal geometry (DNA, RNA) : Parkinson et al. (1996)
Validation Pipeline (wwPDB-VP) : trunk30967

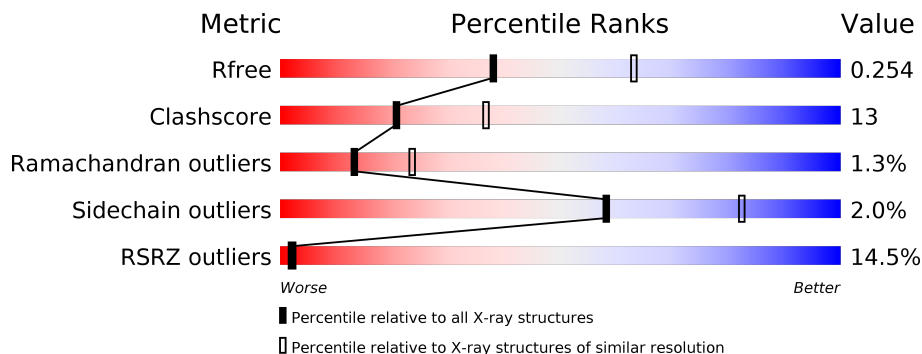
1 Overall quality at a glance

The following experimental techniques were used to determine the structure:

X-RAY DIFFRACTION

The reported resolution of this entry is 2.50 Å.

Percentile scores (ranging between 0-100) for global validation metrics of the entry are shown in the following graphic. The table shows the number of entries on which the scores are based.



Metric	Whole archive (#Entries)	Similar resolution (#Entries, resolution range(Å))
R_{free}	111664	4155 (2.50-2.50)
Clashscore	122126	4827 (2.50-2.50)
Ramachandran outliers	120053	4735 (2.50-2.50)
Sidechain outliers	120020	4737 (2.50-2.50)
RSRZ outliers	108989	4058 (2.50-2.50)

The table below summarises the geometric issues observed across the polymeric chains and their fit to the electron density. The red, orange, yellow and green segments on the lower bar indicate the fraction of residues that contain outliers for ≥ 3 , 2, 1 and 0 types of geometric quality criteria. A grey segment represents the fraction of residues that are not modelled. The numeric value for each fraction is indicated below the corresponding segment, with a dot representing fractions $\leq 5\%$. The upper red bar (where present) indicates the fraction of residues that have poor fit to the electron density. The numeric value is given above the bar.

Mol	Chain	Length	Quality of chain
1	A	179	
2	L	214	
3	H	237	

2 Entry composition

There are 7 unique types of molecules in this entry. The entry contains 5002 atoms, of which 0 are hydrogens and 0 are deuteriums.

In the tables below, the ZeroOcc column contains the number of atoms modelled with zero occupancy, the AltConf column contains the number of residues with at least one atom in alternate conformation and the Trace column contains the number of residues modelled with at most 2 atoms.

- Molecule 1 is a protein called RNA polymerase sigma factor.

Mol	Chain	Residues	Atoms					ZeroOcc	AltConf	Trace
			Total	C	N	O	S			
1	A	177	1408	898	250	259	1	0	0	0

There are 14 discrepancies between the modelled and reference sequences:

Chain	Residue	Modelled	Actual	Comment	Reference
A	105	GLU	GLN	ENGINEERED	UNP Q9EZJ8
A	107	LEU	PRO	ENGINEERED	UNP Q9EZJ8
A	108	GLU	LEU	ENGINEERED	UNP Q9EZJ8
A	110	ASP	THR	ENGINEERED	UNP Q9EZJ8
A	111	LYS	LEU	ENGINEERED	UNP Q9EZJ8
A	112	TRP	GLU	ENGINEERED	UNP Q9EZJ8
A	113	ALA	GLU	ENGINEERED	UNP Q9EZJ8
A	115	LEU	ILE	ENGINEERED	UNP Q9EZJ8
A	116	GLY	ASP	ENGINEERED	UNP Q9EZJ8
A	117	ALA	LEU	ENGINEERED	UNP Q9EZJ8
A	119	ALA	ARG	ENGINEERED	UNP Q9EZJ8
A	155	ALA	ARG	ENGINEERED	UNP Q9EZJ8
A	247	GLY	ARG	ENGINEERED	UNP Q9EZJ8
A	249	ALA	LYS	ENGINEERED	UNP Q9EZJ8

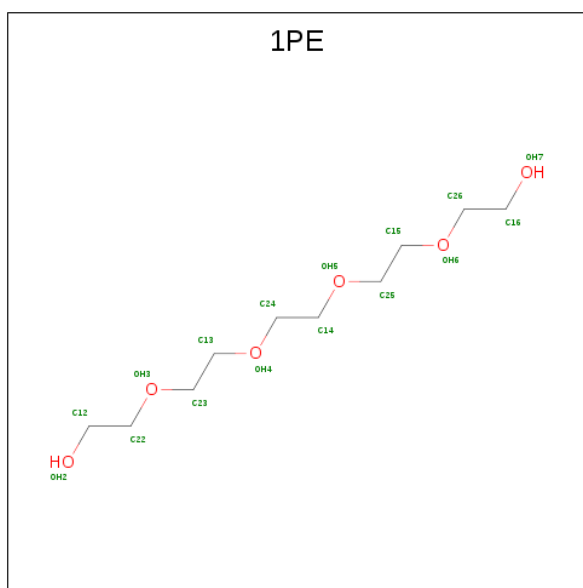
- Molecule 2 is a protein called 2F5 ANTIBODY LIGHT CHAIN.

Mol	Chain	Residues	Atoms					ZeroOcc	AltConf	Trace
			Total	C	N	O	S			
2	L	214	1640	1023	281	331	5	0	0	0

- Molecule 3 is a protein called 2F5 ANTIBODY HEAVY CHAIN.

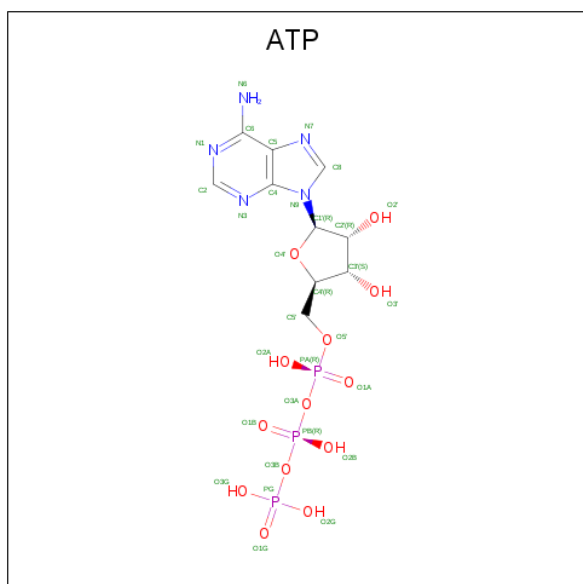
Mol	Chain	Residues	Atoms					ZeroOcc	AltConf	Trace
			Total	C	N	O	S			
3	H	237	1773	1124	299	343	7	0	0	0

- Molecule 4 is PENTAETHYLENE GLYCOL (three-letter code: 1PE) (formula: $C_{10}H_{22}O_6$).



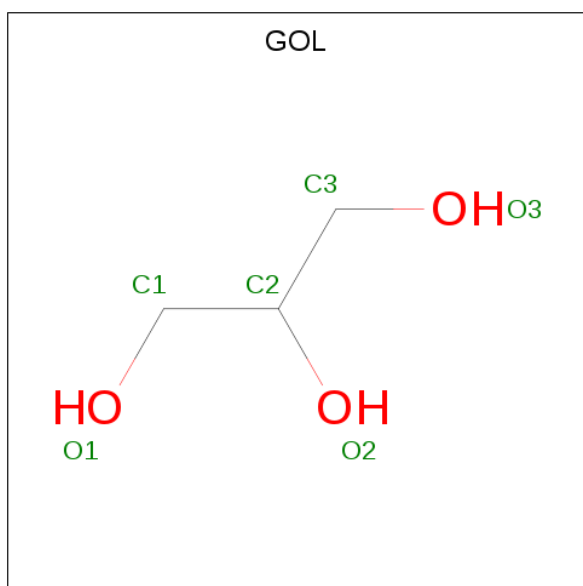
Mol	Chain	Residues	Atoms		ZeroOcc	AltConf	
4	L	1	Total	C	O	0	0
			16	10	6		

- Molecule 5 is ADENOSINE-5'-TRIPHOSPHATE (three-letter code: ATP) (formula: $C_{10}H_{16}N_5O_{13}P_3$).



Mol	Chain	Residues	Atoms					ZeroOcc	AltConf
5	H	1	Total	C	N	O	P	0	1
			62	20	10	26	6		

- Molecule 6 is GLYCEROL (three-letter code: GOL) (formula: $C_3H_8O_3$).



Mol	Chain	Residues	Atoms	ZeroOcc	AltConf
6	H	1	Total C O 6 3 3	0	0

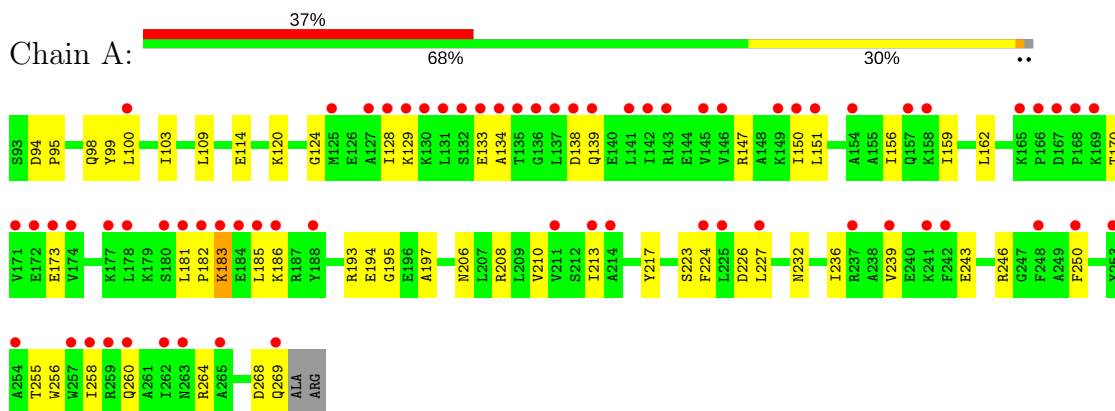
- Molecule 7 is water.

Mol	Chain	Residues	Atoms	ZeroOcc	AltConf
7	A	9	Total O 9 9	0	0
7	L	28	Total O 28 28	0	0
7	H	60	Total O 60 60	0	0

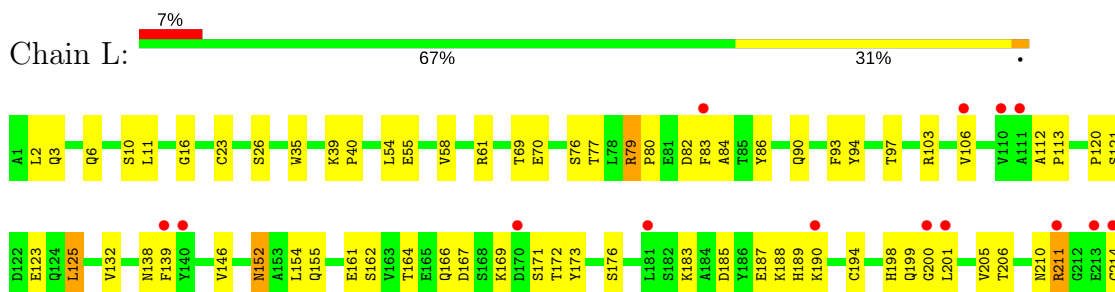
3 Residue-property plots

These plots are drawn for all protein, RNA and DNA chains in the entry. The first graphic for a chain summarises the proportions of the various outlier classes displayed in the second graphic. The second graphic shows the sequence view annotated by issues in geometry and electron density. Residues are color-coded according to the number of geometric quality criteria for which they contain at least one outlier: green = 0, yellow = 1, orange = 2 and red = 3 or more. A red dot above a residue indicates a poor fit to the electron density ($RSRZ > 2$). Stretches of 2 or more consecutive residues without any outlier are shown as a green connector. Residues present in the sample, but not in the model, are shown in grey.

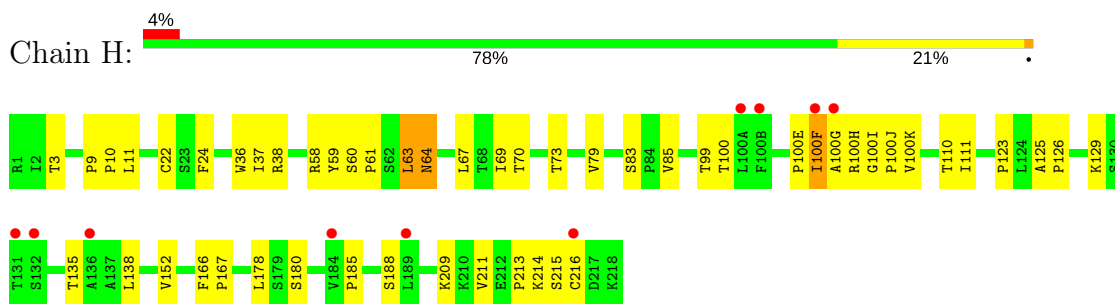
- Molecule 1: RNA polymerase sigma factor



- Molecule 2: 2F5 ANTIBODY LIGHT CHAIN



- Molecule 3: 2F5 ANTIBODY HEAVY CHAIN



4 Data and refinement statistics

Property	Value	Source
Space group	P 21 21 21	Depositor
Cell constants a, b, c, α , β , γ	58.51Å 63.93Å 200.02Å 90.00° 90.00° 90.00°	Depositor
Resolution (Å)	46.15 – 2.50 46.15 – 2.50	Depositor EDS
% Data completeness (in resolution range)	84.0 (46.15-2.50) 84.0 (46.15-2.50)	Depositor EDS
R_{merge}	(Not available)	Depositor
R_{sym}	0.09	Depositor
$\langle I/\sigma(I) \rangle$ ¹	1.25 (at 2.51Å)	Xtrriage
Refinement program	PHENIX (PHENIX.REFINE)	Depositor
R, R_{free}	0.201 , 0.253 0.198 , 0.254	Depositor DCC
R_{free} test set	2329 reflections (9.86%)	wwPDB-VP
Wilson B-factor (Å ²)	69.0	Xtrriage
Anisotropy	0.185	Xtrriage
Bulk solvent k_{sol} (e/Å ³), B_{sol} (Å ²)	0.34 , 87.0	EDS
L-test for twinning ²	$\langle L \rangle = 0.48$, $\langle L^2 \rangle = 0.31$	Xtrriage
Estimated twinning fraction	No twinning to report.	Xtrriage
F_o, F_c correlation	0.95	EDS
Total number of atoms	5002	wwPDB-VP
Average B, all atoms (Å ²)	106.0	wwPDB-VP

Xtrriage's analysis on translational NCS is as follows: *The largest off-origin peak in the Patterson function is 5.05% of the height of the origin peak. No significant pseudotranslation is detected.*

¹Intensities estimated from amplitudes.

²Theoretical values of $\langle |L| \rangle$, $\langle L^2 \rangle$ for acentric reflections are 0.5, 0.333 respectively for untwinned datasets, and 0.375, 0.2 for perfectly twinned datasets.

5 Model quality [i](#)

5.1 Standard geometry [i](#)

Bond lengths and bond angles in the following residue types are not validated in this section: GOL, ATP, 1PE

The Z score for a bond length (or angle) is the number of standard deviations the observed value is removed from the expected value. A bond length (or angle) with $|Z| > 5$ is considered an outlier worth inspection. RMSZ is the root-mean-square of all Z scores of the bond lengths (or angles).

Mol	Chain	Bond lengths		Bond angles	
		RMSZ	# Z >5	RMSZ	# Z >5
1	A	0.27	0/1430	0.41	0/1923
2	L	0.37	0/1677	0.46	0/2279
3	H	0.33	0/1816	0.49	0/2480
All	All	0.33	0/4923	0.46	0/6682

There are no bond length outliers.

There are no bond angle outliers.

There are no chirality outliers.

There are no planarity outliers.

5.2 Too-close contacts [i](#)

In the following table, the Non-H and H(model) columns list the number of non-hydrogen atoms and hydrogen atoms in the chain respectively. The H(added) column lists the number of hydrogen atoms added and optimized by MolProbity. The Clashes column lists the number of clashes within the asymmetric unit, whereas Symm-Clashes lists symmetry related clashes.

Mol	Chain	Non-H	H(model)	H(added)	Clashes	Symm-Clashes
1	A	1408	0	1457	41	0
2	L	1640	0	1587	55	0
3	H	1773	0	1794	36	0
4	L	16	0	22	2	0
5	H	62	0	24	1	0
6	H	6	0	8	0	0
7	A	9	0	0	1	0
7	H	60	0	0	1	0
7	L	28	0	0	0	0
All	All	5002	0	4892	129	0

The all-atom clashscore is defined as the number of clashes found per 1000 atoms (including hydrogen atoms). The all-atom clashscore for this structure is 13.

All (129) close contacts within the same asymmetric unit are listed below, sorted by their clash magnitude.

Atom-1	Atom-2	Interatomic distance (Å)	Clash overlap (Å)
1:A:150:ILE:HD11	1:A:193:ARG:HG3	1.27	1.08
1:A:150:ILE:HD11	1:A:193:ARG:CG	1.87	1.04
2:L:16:GLY:HA2	2:L:77:THR:HG23	1.49	0.92
2:L:79:ARG:HH11	2:L:79:ARG:HB3	1.43	0.83
3:H:126:PRO:HG3	3:H:138:LEU:HB3	1.66	0.77
2:L:3:GLN:H	2:L:26:SER:HB3	1.50	0.77
1:A:208:ARG:HD2	7:A:280:HOH:O	1.85	0.77
3:H:100:THR:HG22	3:H:100(E):PRO:HA	1.66	0.75
1:A:268:ASP:O	1:A:269:GLN:HB2	1.84	0.75
2:L:187:GLU:HA	2:L:211:ARG:HH12	1.52	0.73
2:L:40:PRO:HA	4:L:215:1PE:H222	1.70	0.73
1:A:183:LYS:H	1:A:183:LYS:HD2	1.53	0.72
2:L:39:LYS:HD2	2:L:84:ALA:HB2	1.72	0.72
2:L:190:LYS:HA	2:L:211:ARG:HG2	1.71	0.72
2:L:187:GLU:HA	2:L:211:ARG:NH1	2.05	0.71
3:H:100(H):ARG:O	3:H:100(K):VAL:HG22	1.93	0.69
3:H:126:PRO:HD2	3:H:213:PRO:HA	1.74	0.68
1:A:120:LYS:HE2	1:A:194:GLU:HB3	1.78	0.65
3:H:123:PRO:HG3	3:H:209:LYS:HE2	1.78	0.64
1:A:147:ARG:O	1:A:151:LEU:HB2	1.96	0.64
1:A:182:PRO:HD2	1:A:185:LEU:HD22	1.80	0.64
2:L:167:ASP:O	2:L:171:SER:HA	1.99	0.63
2:L:106:VAL:HG22	2:L:166:GLN:NE2	2.14	0.62
1:A:109:LEU:HB2	1:A:114:GLU:HG3	1.83	0.61
2:L:69:THR:HG22	2:L:70:GLU:HG2	1.84	0.60
2:L:189:HIS:O	2:L:211:ARG:HD3	2.01	0.59
2:L:83:PHE:CD2	2:L:106:VAL:HG12	2.39	0.58
3:H:63:LEU:HA	7:H:265:HOH:O	2.03	0.58
2:L:125:LEU:O	2:L:183:LYS:HD3	2.04	0.58
1:A:128:ILE:HG22	1:A:139:GLN:HB3	1.86	0.57
1:A:213:ILE:HD11	1:A:255:THR:HG23	1.85	0.57
1:A:243:GLU:CD	1:A:246:ARG:HG3	2.24	0.57
1:A:268:ASP:O	1:A:269:GLN:CB	2.52	0.57
1:A:129:LYS:O	1:A:133:GLU:HG2	2.04	0.57
2:L:79:ARG:NH1	2:L:79:ARG:HB3	2.18	0.56
1:A:95:PRO:HA	1:A:98:GLN:HB2	1.87	0.56
3:H:59:TYR:HB2	3:H:64:ASN:HB2	1.87	0.56

Continued on next page...

Continued from previous page...

Atom-1	Atom-2	Interatomic distance (Å)	Clash overlap (Å)
1:A:150:ILE:HD11	1:A:193:ARG:HG2	1.80	0.56
2:L:121:SER:OG	3:H:123:PRO:HD2	2.06	0.55
1:A:186:LYS:O	1:A:186:LYS:HD3	2.06	0.55
3:H:100(F):ILE:HG13	3:H:100(G):ALA:H	1.73	0.54
1:A:150:ILE:CD1	1:A:193:ARG:HG3	2.19	0.54
1:A:151:LEU:O	1:A:151:LEU:HD23	2.09	0.53
1:A:159:ILE:HB	1:A:162:LEU:HD12	1.91	0.53
1:A:260:GLN:O	1:A:264:ARG:HG2	2.09	0.53
1:A:156:ILE:O	1:A:159:ILE:HD11	2.09	0.53
2:L:166:GLN:HB2	2:L:173:TYR:CE1	2.44	0.52
3:H:100:THR:HG22	3:H:100(E):PRO:CA	2.37	0.52
1:A:206:ASN:OD1	1:A:250:PHE:HE2	1.91	0.52
1:A:210:VAL:HG22	1:A:258:ILE:HD13	1.92	0.52
3:H:99:THR:HB	3:H:100(G):ALA:HB3	1.91	0.52
1:A:128:ILE:CG2	1:A:139:GLN:HB3	2.40	0.52
1:A:124:GLY:HA3	1:A:195:GLY:HA3	1.90	0.52
2:L:121:SER:HB3	2:L:123:GLU:OE2	2.10	0.51
2:L:139:PHE:O	2:L:172:THR:HB	2.11	0.51
1:A:150:ILE:HD13	1:A:193:ARG:HE	1.76	0.51
3:H:214:LYS:C	3:H:216:CYS:H	2.15	0.50
2:L:80:PRO:O	2:L:83:PHE:HD1	1.95	0.50
1:A:150:ILE:HG21	1:A:197:ALA:HA	1.93	0.50
2:L:121:SER:O	2:L:125:LEU:HD22	2.12	0.49
2:L:94:TYR:CE2	3:H:58:ARG:HG3	2.46	0.49
2:L:185:ASP:HA	2:L:188:LYS:HE2	1.93	0.49
1:A:159:ILE:N	1:A:159:ILE:HD12	2.28	0.49
2:L:80:PRO:HA	2:L:83:PHE:HE1	1.76	0.49
2:L:201:LEU:HD13	2:L:205:VAL:HG23	1.95	0.49
2:L:198:HIS:CD2	2:L:200:GLY:H	2.31	0.48
1:A:99:TYR:CE2	1:A:103:ILE:HD13	2.48	0.48
3:H:61:PRO:O	5:H:219[A]:ATP:N6	2.47	0.47
2:L:164:THR:HG23	3:H:166:PHE:CD2	2.50	0.47
3:H:64:ASN:ND2	3:H:64:ASN:C	2.67	0.47
2:L:199:GLN:C	2:L:201:LEU:H	2.18	0.47
3:H:100(F):ILE:HG13	3:H:100(G):ALA:N	2.29	0.47
2:L:54:LEU:HD11	2:L:58:VAL:HG12	1.96	0.47
2:L:2:LEU:HD13	2:L:93:PHE:HD1	1.78	0.47
1:A:162:LEU:HD21	1:A:236:ILE:HG13	1.97	0.47
2:L:79:ARG:HB3	2:L:80:PRO:HD2	1.97	0.47
2:L:152:ASN:O	2:L:152:ASN:ND2	2.49	0.46
3:H:135:THR:HG22	3:H:185:PRO:HA	1.98	0.46

Continued on next page...

Continued from previous page...

Atom-1	Atom-2	Interatomic distance (Å)	Clash overlap (Å)
2:L:23:CYS:HB2	2:L:35:TRP:CH2	2.50	0.46
2:L:167:ASP:OD1	2:L:169:LYS:HB2	2.15	0.46
2:L:211:ARG:HA	2:L:214:CYS:OXT	2.16	0.46
3:H:138:LEU:HD12	3:H:211:VAL:HB	1.97	0.45
3:H:60:SER:HB3	3:H:63:LEU:HD11	1.98	0.45
1:A:99:TYR:HD2	1:A:100:LEU:HD23	1.81	0.45
3:H:178:LEU:HD12	3:H:178:LEU:C	2.36	0.45
1:A:217:TYR:HB2	1:A:227:LEU:HD13	1.99	0.45
1:A:94:ASP:OD1	1:A:95:PRO:HD2	2.17	0.45
2:L:161:GLU:HA	2:L:176:SER:O	2.16	0.45
3:H:83:SER:OG	3:H:85:VAL:HG12	2.17	0.45
2:L:113:PRO:HD3	2:L:198:HIS:HD2	1.82	0.45
2:L:79:ARG:HH11	2:L:80:PRO:HD2	1.82	0.45
1:A:232:ASN:O	1:A:236:ILE:HG12	2.17	0.45
2:L:90:GLN:HE21	2:L:97:THR:HG23	1.82	0.45
3:H:100(I):GLY:N	3:H:100(J):PRO:CD	2.79	0.44
3:H:111:ILE:HD12	3:H:111:ILE:N	2.32	0.44
2:L:154:LEU:HD12	2:L:155:GLN:H	1.83	0.44
3:H:125:ALA:HA	3:H:126:PRO:HD3	1.83	0.44
2:L:194:CYS:O	2:L:206:THR:HA	2.18	0.44
1:A:236:ILE:HA	1:A:239:VAL:HG12	1.99	0.44
3:H:9:PRO:HA	3:H:10:PRO:HD3	1.85	0.44
1:A:124:GLY:O	1:A:128:ILE:HG13	2.18	0.43
2:L:80:PRO:O	2:L:83:PHE:CD1	2.71	0.43
1:A:170:THR:HA	1:A:173:GLU:HB3	1.99	0.43
3:H:59:TYR:CE2	3:H:69:ILE:HG22	2.53	0.43
2:L:79:ARG:NH1	2:L:80:PRO:HD2	2.33	0.43
2:L:162:SER:OG	3:H:167:PRO:HD2	2.19	0.43
2:L:112:ALA:HA	2:L:113:PRO:HD3	1.79	0.43
2:L:79:ARG:HB3	2:L:80:PRO:CD	2.49	0.43
3:H:37:ILE:HD12	3:H:37:ILE:N	2.33	0.43
2:L:146:VAL:HG13	2:L:194:CYS:SG	2.58	0.43
1:A:181:LEU:HB3	1:A:182:PRO:HD2	2.01	0.42
4:L:215:1PE:H251	4:L:215:1PE:H261	1.83	0.42
1:A:223:SER:O	1:A:226:ASP:HB2	2.19	0.42
2:L:183:LYS:O	2:L:187:GLU:HG3	2.20	0.42
3:H:152:VAL:HG11	3:H:180:SER:CB	2.49	0.42
3:H:63:LEU:HD13	3:H:67:LEU:CD1	2.49	0.42
2:L:10:SER:HA	2:L:103:ARG:O	2.20	0.42
2:L:120:PRO:HD3	2:L:132:VAL:HG22	2.01	0.42
3:H:11:LEU:HA	3:H:110:THR:O	2.20	0.42

Continued on next page...

Continued from previous page...

Atom-1	Atom-2	Interatomic distance (Å)	Clash overlap (Å)
3:H:22:CYS:HB2	3:H:36:TRP:CZ2	2.55	0.42
2:L:55:GLU:O	2:L:58:VAL:HB	2.20	0.41
2:L:6:GLN:NE2	2:L:86:TYR:O	2.53	0.41
2:L:120:PRO:HB2	2:L:125:LEU:HD22	2.02	0.41
1:A:138:ASP:OD2	1:A:139:GLN:HG3	2.21	0.41
3:H:3:THR:O	3:H:24:PHE:HA	2.21	0.41
2:L:120:PRO:HB2	2:L:125:LEU:CD2	2.51	0.41
3:H:129:LYS:HD3	3:H:129:LYS:HA	1.90	0.40
3:H:70:THR:HG22	3:H:79:VAL:HB	2.04	0.40
2:L:61:ARG:HH21	2:L:82:ASP:CG	2.24	0.40

There are no symmetry-related clashes.

5.3 Torsion angles [i](#)

5.3.1 Protein backbone [i](#)

In the following table, the Percentiles column shows the percent Ramachandran outliers of the chain as a percentile score with respect to all X-ray entries followed by that with respect to entries of similar resolution.

The Analysed column shows the number of residues for which the backbone conformation was analysed, and the total number of residues.

Mol	Chain	Analysed	Favoured	Allowed	Outliers	Percentiles	
1	A	175/179 (98%)	153 (87%)	20 (11%)	2 (1%)	16	28
2	L	212/214 (99%)	189 (89%)	20 (9%)	3 (1%)	12	22
3	H	235/237 (99%)	213 (91%)	19 (8%)	3 (1%)	13	23
All	All	622/630 (99%)	555 (89%)	59 (10%)	8 (1%)	13	23

All (8) Ramachandran outliers are listed below:

Mol	Chain	Res	Type
3	H	188	SER
1	A	134	ALA
2	L	76	SER
2	L	138	ASN
3	H	215	SER
1	A	224	PHE
2	L	211	ARG

Continued on next page...

Continued from previous page...

Mol	Chain	Res	Type
3	H	100(F)	ILE

5.3.2 Protein sidechains [i](#)

In the following table, the Percentiles column shows the percent sidechain outliers of the chain as a percentile score with respect to all X-ray entries followed by that with respect to entries of similar resolution.

The Analysed column shows the number of residues for which the sidechain conformation was analysed, and the total number of residues.

Mol	Chain	Analysed	Rotameric	Outliers	Percentiles	
1	A	144/145 (99%)	142 (99%)	2 (1%)	69	88
2	L	186/186 (100%)	181 (97%)	5 (3%)	48	75
3	H	207/207 (100%)	203 (98%)	4 (2%)	60	83
All	All	537/538 (100%)	526 (98%)	11 (2%)	58	82

All (11) residues with a non-rotameric sidechain are listed below:

Mol	Chain	Res	Type
1	A	183	LYS
1	A	256	TRP
2	L	11	LEU
2	L	79	ARG
2	L	125	LEU
2	L	152	ASN
2	L	210	ASN
3	H	38	ARG
3	H	63	LEU
3	H	64	ASN
3	H	73	THR

Some sidechains can be flipped to improve hydrogen bonding and reduce clashes. All (1) such sidechains are listed below:

Mol	Chain	Res	Type
2	L	92	HIS

5.3.3 RNA [i](#)

There are no RNA molecules in this entry.

5.4 Non-standard residues in protein, DNA, RNA chains [i](#)

There are no non-standard protein/DNA/RNA residues in this entry.

5.5 Carbohydrates [i](#)

There are no carbohydrates in this entry.

5.6 Ligand geometry [i](#)

4 ligands are modelled in this entry.

In the following table, the Counts columns list the number of bonds (or angles) for which Mogul statistics could be retrieved, the number of bonds (or angles) that are observed in the model and the number of bonds (or angles) that are defined in the Chemical Component Dictionary. The Link column lists molecule types, if any, to which the group is linked. The Z score for a bond length (or angle) is the number of standard deviations the observed value is removed from the expected value. A bond length (or angle) with $|Z| > 2$ is considered an outlier worth inspection. RMSZ is the root-mean-square of all Z scores of the bond lengths (or angles).

Mol	Type	Chain	Res	Link	Bond lengths			Bond angles		
					Counts	RMSZ	# Z > 2	Counts	RMSZ	# Z > 2
5	ATP	H	219[A]	-	27,33,33	1.01	1 (3%)	27,52,52	1.91	5 (18%)
5	ATP	H	219[B]	-	27,33,33	1.12	2 (7%)	27,52,52	1.30	5 (18%)
6	GOL	H	220	-	5,5,5	0.35	0	5,5,5	0.18	0
4	1PE	L	215	-	15,15,15	0.55	0	14,14,14	0.79	0

In the following table, the Chirals column lists the number of chiral outliers, the number of chiral centers analysed, the number of these observed in the model and the number defined in the Chemical Component Dictionary. Similar counts are reported in the Torsion and Rings columns. '-' means no outliers of that kind were identified.

Mol	Type	Chain	Res	Link	Chirals	Torsions	Rings
5	ATP	H	219[A]	-	-	0/18/38/38	0/3/3/3
5	ATP	H	219[B]	-	-	0/18/38/38	0/3/3/3
6	GOL	H	220	-	-	0/4/4/4	0/0/0/0
4	1PE	L	215	-	-	0/13/13/13	0/0/0/0

All (3) bond length outliers are listed below:

Mol	Chain	Res	Type	Atoms	Z	Observed(Å)	Ideal(Å)
5	H	219[B]	ATP	C8-N9	2.10	1.39	1.36
5	H	219[B]	ATP	C2-N1	2.62	1.38	1.33
5	H	219[A]	ATP	C5-C4	3.14	1.47	1.40

All (10) bond angle outliers are listed below:

Mol	Chain	Res	Type	Atoms	Z	Observed(°)	Ideal(°)
5	H	219[A]	ATP	N3-C2-N1	-6.19	123.56	128.86
5	H	219[A]	ATP	PB-O3B-PG	-3.40	121.21	132.63
5	H	219[A]	ATP	PA-O3A-PB	-3.33	121.45	132.63
5	H	219[A]	ATP	C4'-O4'-C1'	-3.21	106.49	109.83
5	H	219[A]	ATP	C4-C5-N7	-2.52	106.98	109.41
5	H	219[B]	ATP	O3'-C3'-C2'	-2.08	105.16	111.83
5	H	219[B]	ATP	C2'-C3'-C4'	-2.06	98.66	102.62
5	H	219[B]	ATP	O4'-C4'-C5'	-2.02	102.64	109.39
5	H	219[B]	ATP	N3-C2-N1	2.24	130.78	128.86
5	H	219[B]	ATP	C5-C6-N6	2.55	125.66	120.47

There are no chirality outliers.

There are no torsion outliers.

There are no ring outliers.

2 monomers are involved in 3 short contacts:

Mol	Chain	Res	Type	Clashes	Symm-Clashes
5	H	219[A]	ATP	1	0
4	L	215	1PE	2	0

5.7 Other polymers [i](#)

There are no such residues in this entry.

5.8 Polymer linkage issues [i](#)

There are no chain breaks in this entry.

6 Fit of model and data

6.1 Protein, DNA and RNA chains

In the following table, the column labelled ‘#RSRZ > 2’ contains the number (and percentage) of RSRZ outliers, followed by percent RSRZ outliers for the chain as percentile scores relative to all X-ray entries and entries of similar resolution. The OWAB column contains the minimum, median, 95th percentile and maximum values of the occupancy-weighted average B-factor per residue. The column labelled ‘Q < 0.9’ lists the number of (and percentage) of residues with an average occupancy less than 0.9.

Mol	Chain	Analysed	<RSRZ>	#RSRZ>2	OWAB(Å ²)	Q<0.9
1	A	177/179 (98%)	2.09	67 (37%) 0 0	60, 148, 226, 247	0
2	L	214/214 (100%)	0.50	14 (6%) 19 20	49, 89, 129, 176	0
3	H	237/237 (100%)	0.36	10 (4%) 36 39	48, 74, 138, 179	0
All	All	628/630 (99%)	0.90	91 (14%) 2 2	48, 95, 200, 247	0

All (91) RSRZ outliers are listed below:

Mol	Chain	Res	Type	RSRZ
1	A	131	LEU	12.9
1	A	185	LEU	10.9
2	L	214	CYS	9.2
1	A	135	THR	9.0
1	A	183	LYS	8.8
1	A	132	SER	8.6
1	A	178	LEU	7.8
1	A	130	LYS	7.6
1	A	269	GLN	7.4
1	A	180	SER	7.1
2	L	213	GLU	6.9
1	A	128	ILE	6.9
1	A	137	LEU	6.6
1	A	181	LEU	6.5
1	A	182	PRO	6.3
1	A	141	LEU	6.1
3	H	216	CYS	6.0
1	A	172	GLU	6.0
1	A	173	GLU	5.9
1	A	166	PRO	5.6
1	A	224	PHE	5.4
1	A	265	ALA	5.4
1	A	171	VAL	5.2

Continued on next page...

Continued from previous page...

Mol	Chain	Res	Type	RSRZ
3	H	100(A)	LEU	5.2
1	A	237	ARG	4.9
1	A	127	ALA	4.7
1	A	129	LYS	4.7
1	A	100	LEU	4.5
1	A	258	ILE	4.4
1	A	257	TRP	4.3
1	A	138	ASP	4.2
1	A	142	ILE	4.0
3	H	131	THR	4.0
1	A	133	GLU	4.0
1	A	157	GLN	3.9
1	A	169	LYS	3.8
1	A	214	ALA	3.7
1	A	262	ILE	3.7
1	A	263	ASN	3.6
1	A	145	VAL	3.6
2	L	139	PHE	3.5
1	A	139	GLN	3.5
3	H	132	SER	3.4
1	A	146	VAL	3.4
1	A	184	GLU	3.2
1	A	167	ASP	3.2
1	A	165	LYS	3.2
1	A	227	LEU	3.2
2	L	201	LEU	3.2
1	A	213	ILE	3.1
3	H	189	LEU	3.1
1	A	260	GLN	3.1
1	A	136	GLY	3.0
2	L	140	TYR	3.0
3	H	136	ALA	3.0
1	A	177	LYS	2.9
1	A	149	LYS	2.9
1	A	211	VAL	2.9
2	L	170	ASP	2.9
1	A	150	ILE	2.9
1	A	188	TYR	2.8
1	A	158	LYS	2.8
1	A	154	ALA	2.8
1	A	174	VAL	2.7
1	A	168	PRO	2.7

Continued on next page...

Continued from previous page...

Mol	Chain	Res	Type	RSRZ
1	A	125	MET	2.7
3	H	100(B)	PHE	2.7
1	A	239	VAL	2.6
2	L	110	VAL	2.6
1	A	151	LEU	2.5
1	A	186	LYS	2.5
2	L	111	ALA	2.5
2	L	106	VAL	2.4
3	H	184	VAL	2.4
1	A	143	ARG	2.4
1	A	253	TYR	2.4
3	H	100(G)	ALA	2.4
2	L	83	PHE	2.3
1	A	242	PHE	2.3
1	A	134	ALA	2.3
2	L	181	LEU	2.2
1	A	241	LYS	2.2
2	L	200	GLY	2.2
1	A	225	LEU	2.2
1	A	254	ALA	2.2
1	A	248	PHE	2.2
1	A	250	PHE	2.2
3	H	100(F)	ILE	2.1
2	L	211	ARG	2.1
2	L	190	LYS	2.1
1	A	259	ARG	2.0

6.2 Non-standard residues in protein, DNA, RNA chains [\(i\)](#)

There are no non-standard protein/DNA/RNA residues in this entry.

6.3 Carbohydrates [\(i\)](#)

There are no carbohydrates in this entry.

6.4 Ligands [\(i\)](#)

In the following table, the Atoms column lists the number of modelled atoms in the group and the number defined in the chemical component dictionary. The B-factors column lists the minimum, median, 95th percentile and maximum values of B factors of atoms in the group. The column labelled 'Q< 0.9' lists the number of atoms with occupancy less than 0.9.

Mol	Type	Chain	Res	Atoms	RSCC	RSR	B-factors(\AA^2)	Q<0.9
5	ATP	H	219[B]	31/31	0.72	0.25	128,149,218,220	31
5	ATP	H	219[A]	31/31	0.72	0.25	118,147,218,221	31
4	1PE	L	215	16/16	0.84	0.16	81,109,120,122	0
6	GOL	H	220	6/6	0.88	0.30	112,116,125,128	0

6.5 Other polymers [i](#)

There are no such residues in this entry.