



# Full wwPDB X-ray Structure Validation Report ⓘ

May 17, 2020 – 01:49 am BST

PDB ID : 5LKT  
Title : Crystal structure of the p300 acetyltransferase catalytic core with butyryl-coenzyme A.  
Authors : Kaczmarska, Z.; Ortega, E.; Marquez, J.A.; Panne, D.  
Deposited on : 2016-07-24  
Resolution : 2.04 Å(reported)

This is a Full wwPDB X-ray Structure Validation Report for a publicly released PDB entry.

We welcome your comments at [validation@mail.wwpdb.org](mailto:validation@mail.wwpdb.org)

A user guide is available at

<https://www.wwpdb.org/validation/2017/XrayValidationReportHelp>

with specific help available everywhere you see the ⓘ symbol.

---

The following versions of software and data (see [references ⓘ](#)) were used in the production of this report:

MolProbity : 4.02b-467  
Mogul : 1.8.5 (274361), CSD as541be (2020)  
Xtriage (Phenix) : 1.13  
EDS : 2.11  
buster-report : 1.1.7 (2018)  
Percentile statistics : 20191225.v01 (using entries in the PDB archive December 25th 2019)  
Refmac : 5.8.0158  
CCP4 : 7.0.044 (Gargrove)  
Ideal geometry (proteins) : Engh & Huber (2001)  
Ideal geometry (DNA, RNA) : Parkinson et al. (1996)  
Validation Pipeline (wwPDB-VP) : 2.11

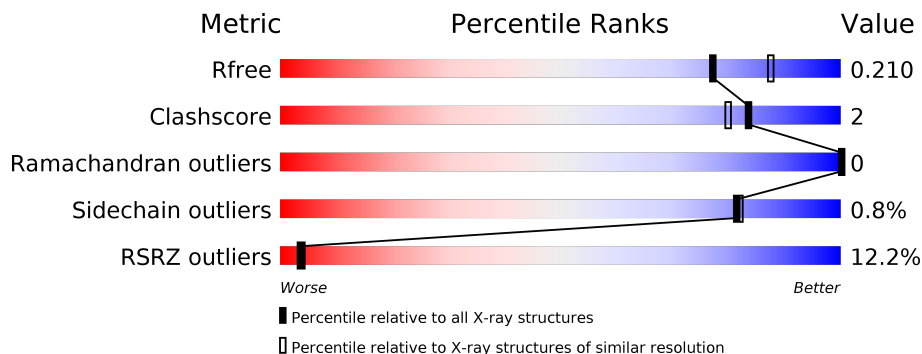
# 1 Overall quality at a glance

The following experimental techniques were used to determine the structure:

*X-RAY DIFFRACTION*

The reported resolution of this entry is 2.04 Å.

Percentile scores (ranging between 0-100) for global validation metrics of the entry are shown in the following graphic. The table shows the number of entries on which the scores are based.



Metric	Whole archive (#Entries)	Similar resolution (#Entries, resolution range(Å))
$R_{free}$	130704	1692 (2.04-2.04)
Clashscore	141614	1773 (2.04-2.04)
Ramachandran outliers	138981	1752 (2.04-2.04)
Sidechain outliers	138945	1752 (2.04-2.04)
RSRZ outliers	127900	1672 (2.04-2.04)

The table below summarises the geometric issues observed across the polymeric chains and their fit to the electron density. The red, orange, yellow and green segments on the lower bar indicate the fraction of residues that contain outliers for  $\geq 3$ , 2, 1 and 0 types of geometric quality criteria respectively. A grey segment represents the fraction of residues that are not modelled. The numeric value for each fraction is indicated below the corresponding segment, with a dot representing fractions  $\leq 5\%$ . The upper red bar (where present) indicates the fraction of residues that have poor fit to the electron density. The numeric value is given above the bar.

Mol	Chain	Length	Quality of chain
1	A	578	

## 2 Entry composition [i](#)

There are 7 unique types of molecules in this entry. The entry contains 4960 atoms, of which 0 are hydrogens and 0 are deuteriums.

In the tables below, the ZeroOcc column contains the number of atoms modelled with zero occupancy, the AltConf column contains the number of residues with at least one atom in alternate conformation and the Trace column contains the number of residues modelled with at most 2 atoms.

- Molecule 1 is a protein called Histone acetyltransferase p300, Histone acetyltransferase p300.

Mol	Chain	Residues	Atoms					ZeroOcc	AltConf	Trace
			Total	C	N	O	S			
1	A	551	4496	2871	767	824	34	0	1	0

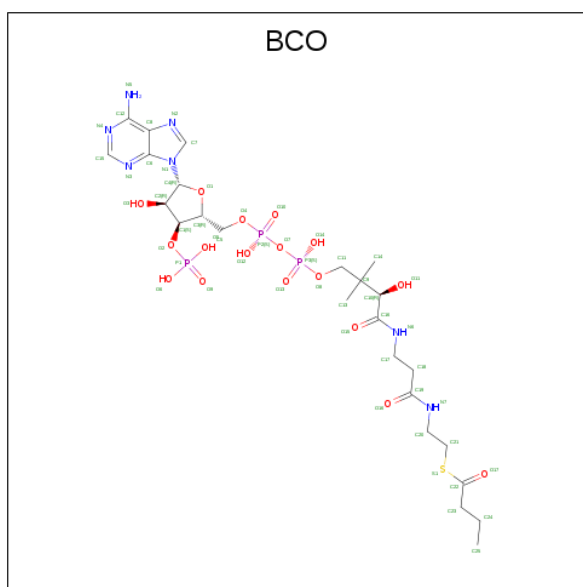
There are 16 discrepancies between the modelled and reference sequences:

Chain	Residue	Modelled	Actual	Comment	Reference
A	1033	GLY	-	expression tag	UNP Q09472
A	1034	ALA	-	expression tag	UNP Q09472
A	1035	MET	-	expression tag	UNP Q09472
A	1036	ALA	-	expression tag	UNP Q09472
A	1037	GLY	-	expression tag	UNP Q09472
A	1038	LYS	-	expression tag	UNP Q09472
A	1039	ALA	-	expression tag	UNP Q09472
A	1040	VAL	-	expression tag	UNP Q09472
A	1041	PRO	-	expression tag	UNP Q09472
A	1042	MET	-	expression tag	UNP Q09472
A	1467	PHE	TYR	engineered mutation	UNP Q09472
A	1520	SER	-	linker	UNP Q09472
A	1521	GLY	-	linker	UNP Q09472
A	1522	GLY	-	linker	UNP Q09472
A	1523	SER	-	linker	UNP Q09472
A	1524	GLY	-	linker	UNP Q09472

- Molecule 2 is ZINC ION (three-letter code: ZN) (formula: Zn).

Mol	Chain	Residues	Atoms		ZeroOcc	AltConf
2	A	4	Total	Zn	0	0
			4	4		

- Molecule 3 is Butyryl Coenzyme A (three-letter code: BCO) (formula: C<sub>25</sub>H<sub>42</sub>N<sub>7</sub>O<sub>17</sub>P<sub>3</sub>S).



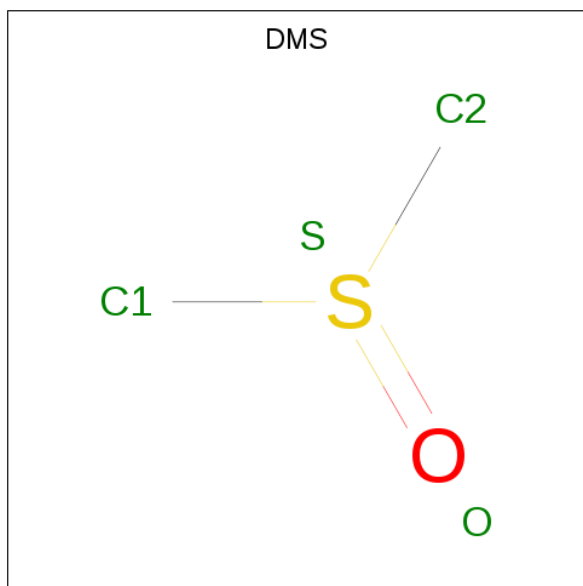
Mol	Chain	Residues	Atoms					ZeroOcc	AltConf	
			Total	C	N	O	P			S
3	A	1	53	25	7	17	3	1	0	0

- Molecule 4 is GLYCEROL (three-letter code: GOL) (formula: C<sub>3</sub>H<sub>8</sub>O<sub>3</sub>).



Mol	Chain	Residues	Atoms		ZeroOcc	AltConf
			Total	O		
4	A	1	6	3	0	0
4	A	1	6	3	0	0
4	A	1	6	3	0	0

- Molecule 5 is DIMETHYL SULFOXIDE (three-letter code: DMS) (formula: C<sub>2</sub>H<sub>6</sub>OS).



Mol	Chain	Residues	Atoms			ZeroOcc	AltConf	
5	A	1	Total	C	O	S	0	0
			4	2	1	1		

- Molecule 6 is CHLORIDE ION (three-letter code: CL) (formula: Cl).

Mol	Chain	Residues	Atoms		ZeroOcc	AltConf
6	A	1	Total	Cl	0	0
			1	1		

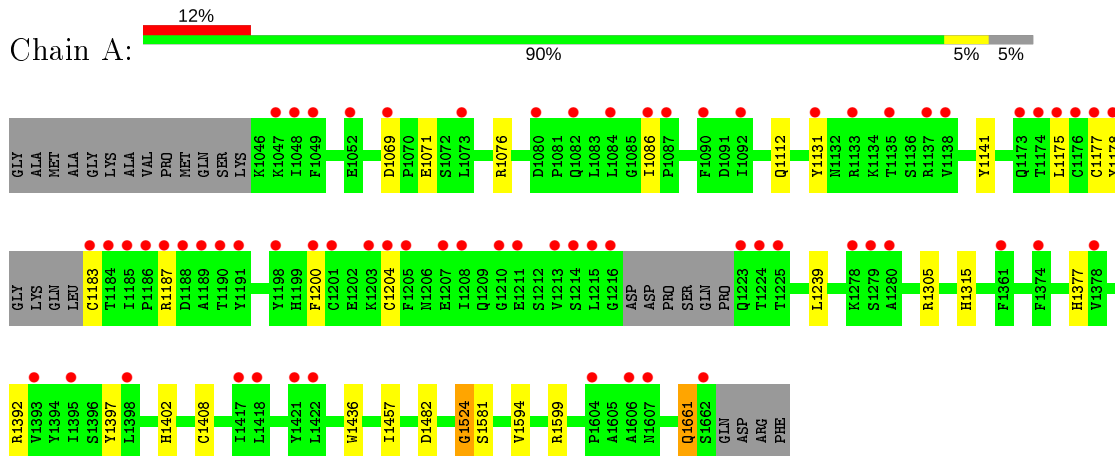
- Molecule 7 is water.

Mol	Chain	Residues	Atoms		ZeroOcc	AltConf
7	A	384	Total	O	0	0
			384	384		

### 3 Residue-property plots [i](#)

These plots are drawn for all protein, RNA and DNA chains in the entry. The first graphic for a chain summarises the proportions of the various outlier classes displayed in the second graphic. The second graphic shows the sequence view annotated by issues in geometry and electron density. Residues are color-coded according to the number of geometric quality criteria for which they contain at least one outlier: green = 0, yellow = 1, orange = 2 and red = 3 or more. A red dot above a residue indicates a poor fit to the electron density ( $RSRZ > 2$ ). Stretches of 2 or more consecutive residues without any outlier are shown as a green connector. Residues present in the sample, but not in the model, are shown in grey.

- Molecule 1: Histone acetyltransferase p300,Histone acetyltransferase p300



## 4 Data and refinement statistics

Property	Value	Source
Space group	C 2 2 21	Depositor
Cell constants a, b, c, $\alpha$ , $\beta$ , $\gamma$	92.48Å 154.69Å 109.23Å 90.00° 90.00° 90.00°	Depositor
Resolution (Å)	50.01 – 2.04 29.67 – 2.04	Depositor EDS
% Data completeness (in resolution range)	99.5 (50.01-2.04) 99.5 (29.67-2.04)	Depositor EDS
$R_{merge}$	(Not available)	Depositor
$R_{sym}$	(Not available)	Depositor
$\langle I/\sigma(I) \rangle$ <sup>1</sup>	1.92 (at 2.04Å)	Xtriage
Refinement program	REFMAC 5.8.0135	Depositor
R, $R_{free}$	0.177 , 0.204 0.182 , 0.210	Depositor DCC
$R_{free}$ test set	2396 reflections (4.80%)	wwPDB-VP
Wilson B-factor (Å <sup>2</sup> )	32.8	Xtriage
Anisotropy	0.087	Xtriage
Bulk solvent $k_{sol}$ (e/Å <sup>3</sup> ), $B_{sol}$ (Å <sup>2</sup> )	0.33 , 50.1	EDS
L-test for twinning <sup>2</sup>	$\langle  L  \rangle = 0.47$ , $\langle L^2 \rangle = 0.30$	Xtriage
Estimated twinning fraction	0.023 for 1/2*h-1/2*k,-3/2*h-1/2*k,-l 0.032 for 1/2*h+1/2*k,3/2*h-1/2*k,-l	Xtriage
$F_o, F_c$ correlation	0.96	EDS
Total number of atoms	4960	wwPDB-VP
Average B, all atoms (Å <sup>2</sup> )	44.0	wwPDB-VP

Xtriage's analysis on translational NCS is as follows: *The largest off-origin peak in the Patterson function is 4.07% of the height of the origin peak. No significant pseudotranslation is detected.*

<sup>1</sup>Intensities estimated from amplitudes.

<sup>2</sup>Theoretical values of  $\langle |L| \rangle$ ,  $\langle L^2 \rangle$  for acentric reflections are 0.5, 0.333 respectively for untwinned datasets, and 0.375, 0.2 for perfectly twinned datasets.

## 5 Model quality [i](#)

### 5.1 Standard geometry [i](#)

Bond lengths and bond angles in the following residue types are not validated in this section: GOL, ZN, BCO, DMS, CL

The Z score for a bond length (or angle) is the number of standard deviations the observed value is removed from the expected value. A bond length (or angle) with  $|Z| > 5$  is considered an outlier worth inspection. RMSZ is the root-mean-square of all Z scores of the bond lengths (or angles).

Mol	Chain	Bond lengths		Bond angles	
		RMSZ	# $ Z  > 5$	RMSZ	# $ Z  > 5$
1	A	0.55	1/4620 (0.0%)	0.67	2/6245 (0.0%)

All (1) bond length outliers are listed below:

Mol	Chain	Res	Type	Atoms	Z	Observed(Å)	Ideal(Å)
1	A	1524	GLY	C-N	20.22	1.80	1.34

All (2) bond angle outliers are listed below:

Mol	Chain	Res	Type	Atoms	Z	Observed(°)	Ideal(°)
1	A	1392	ARG	NE-CZ-NH1	5.55	123.08	120.30
1	A	1305	ARG	NE-CZ-NH2	-5.30	117.65	120.30

There are no chirality outliers.

There are no planarity outliers.

### 5.2 Too-close contacts [i](#)

In the following table, the Non-H and H(model) columns list the number of non-hydrogen atoms and hydrogen atoms in the chain respectively. The H(added) column lists the number of hydrogen atoms added and optimized by MolProbity. The Clashes column lists the number of clashes within the asymmetric unit, whereas Symm-Clashes lists symmetry related clashes.

Mol	Chain	Non-H	H(model)	H(added)	Clashes	Symm-Clashes
1	A	4496	0	4374	21	0
2	A	4	0	0	0	0
3	A	53	0	39	0	0
4	A	18	0	24	1	0
5	A	4	0	6	0	0

*Continued on next page...*



Continued from previous page...

Mol	Chain	Non-H	H(model)	H(added)	Clashes	Symm-Clashes
6	A	1	0	0	0	0
7	A	384	0	0	4	1
All	All	4960	0	4443	22	1

The all-atom clashscore is defined as the number of clashes found per 1000 atoms (including hydrogen atoms). The all-atom clashscore for this structure is 2.

All (22) close contacts within the same asymmetric unit are listed below, sorted by their clash magnitude.

Atom-1	Atom-2	Interatomic distance (Å)	Clash overlap (Å)
1:A:1524:GLY:C	1:A:1581:SER:N	1.80	1.35
1:A:1457:ILE:HD11	7:A:1813:HOH:O	1.94	0.66
4:A:1708:GOL:H31	7:A:2021:HOH:O	2.00	0.60
1:A:1086:ILE:HG23	1:A:1131:TYR:OH	2.02	0.60
1:A:1661:GLN:HE21	1:A:1661:GLN:HA	1.68	0.57
1:A:1177:CYS:HB3	1:A:1183:CYS:HB3	1.89	0.52
1:A:1315:HIS:CD2	1:A:1408[A]:CYS:SG	3.04	0.50
1:A:1069:ASP:OD1	1:A:1076:ARG:NH2	2.45	0.50
1:A:1175:LEU:N	7:A:1801:HOH:O	2.37	0.50
1:A:1524:GLY:C	1:A:1581:SER:CA	2.74	0.49
1:A:1177:CYS:SG	1:A:1204:CYS:SG	3.10	0.49
1:A:1187:ARG:HH11	1:A:1239:LEU:HD11	1.78	0.47
1:A:1178:TYR:HB3	1:A:1200:PHE:CE1	2.51	0.45
1:A:1177:CYS:SG	1:A:1200:PHE:HA	2.57	0.45
1:A:1071:GLU:HA	1:A:1141:TYR:CD2	2.52	0.44
1:A:1524:GLY:CA	1:A:1581:SER:N	2.73	0.44
1:A:1661:GLN:NE2	1:A:1661:GLN:HA	2.33	0.43
1:A:1661:GLN:HE21	1:A:1661:GLN:CA	2.30	0.43
1:A:1436:TRP:CD1	1:A:1594:VAL:HG12	2.55	0.42
1:A:1482:ASP:OD1	1:A:1599:ARG:HD3	2.20	0.41
1:A:1377:HIS:HD2	7:A:1967:HOH:O	2.04	0.41
1:A:1436:TRP:HD1	1:A:1594:VAL:HG12	1.86	0.40

All (1) symmetry-related close contacts are listed below. The label for Atom-2 includes the symmetry operator and encoded unit-cell translations to be applied.

Atom-1	Atom-2	Interatomic distance (Å)	Clash overlap (Å)
7:A:2128:HOH:O	7:A:2128:HOH:O[3_554]	0.84	1.36

## 5.3 Torsion angles [i](#)

### 5.3.1 Protein backbone [i](#)

In the following table, the Percentiles column shows the percent Ramachandran outliers of the chain as a percentile score with respect to all X-ray entries followed by that with respect to entries of similar resolution.

The Analysed column shows the number of residues for which the backbone conformation was analysed, and the total number of residues.

Mol	Chain	Analysed	Favoured	Allowed	Outliers	Percentiles
1	A	546/578 (94%)	529 (97%)	17 (3%)	0	100 100

There are no Ramachandran outliers to report.

### 5.3.2 Protein sidechains [i](#)

In the following table, the Percentiles column shows the percent sidechain outliers of the chain as a percentile score with respect to all X-ray entries followed by that with respect to entries of similar resolution.

The Analysed column shows the number of residues for which the sidechain conformation was analysed, and the total number of residues.

Mol	Chain	Analysed	Rotameric	Outliers	Percentiles
1	A	497/522 (95%)	493 (99%)	4 (1%)	81 82

All (4) residues with a non-rotameric sidechain are listed below:

Mol	Chain	Res	Type
1	A	1112	GLN
1	A	1397	TYR
1	A	1402	HIS
1	A	1661	GLN

Some sidechains can be flipped to improve hydrogen bonding and reduce clashes. All (4) such sidechains are listed below:

Mol	Chain	Res	Type
1	A	1256	GLN
1	A	1377	HIS
1	A	1449	HIS
1	A	1661	GLN

### 5.3.3 RNA [i](#)

There are no RNA molecules in this entry.

## 5.4 Non-standard residues in protein, DNA, RNA chains [i](#)

There are no non-standard protein/DNA/RNA residues in this entry.

## 5.5 Carbohydrates [i](#)

There are no carbohydrates in this entry.

## 5.6 Ligand geometry [i](#)

Of 10 ligands modelled in this entry, 5 are monoatomic - leaving 5 for Mogul analysis.

In the following table, the Counts columns list the number of bonds (or angles) for which Mogul statistics could be retrieved, the number of bonds (or angles) that are observed in the model and the number of bonds (or angles) that are defined in the Chemical Component Dictionary. The Link column lists molecule types, if any, to which the group is linked. The Z score for a bond length (or angle) is the number of standard deviations the observed value is removed from the expected value. A bond length (or angle) with  $|Z| > 2$  is considered an outlier worth inspection. RMSZ is the root-mean-square of all Z scores of the bond lengths (or angles).

Mol	Type	Chain	Res	Link	Bond lengths			Bond angles		
					Counts	RMSZ	# Z  > 2	Counts	RMSZ	# Z  > 2
4	GOL	A	1706	-	5,5,5	0.21	0	5,5,5	0.36	0
5	DMS	A	1709	-	3,3,3	0.26	0	3,3,3	1.05	0
4	GOL	A	1707	-	5,5,5	0.32	0	5,5,5	0.72	0
3	BCO	A	1705	-	47,55,55	1.41	9 (19%)	58,81,81	1.61	8 (13%)
4	GOL	A	1708	-	5,5,5	0.39	0	5,5,5	0.45	0

In the following table, the Chirals column lists the number of chiral outliers, the number of chiral centers analysed, the number of these observed in the model and the number defined in the Chemical Component Dictionary. Similar counts are reported in the Torsion and Rings columns. '-' means no outliers of that kind were identified.

Mol	Type	Chain	Res	Link	Chirals	Torsions	Rings
4	GOL	A	1706	-	-	0/4/4/4	-
4	GOL	A	1707	-	-	2/4/4/4	-
3	BCO	A	1705	-	-	3/50/70/70	0/3/3/3
4	GOL	A	1708	-	-	3/4/4/4	-

All (9) bond length outliers are listed below:

Mol	Chain	Res	Type	Atoms	Z	Observed(Å)	Ideal(Å)
3	A	1705	BCO	C15-N3	4.52	1.39	1.32
3	A	1705	BCO	C15-N4	3.19	1.39	1.33
3	A	1705	BCO	P1-O9	3.09	1.60	1.50
3	A	1705	BCO	C23-C22	2.53	1.53	1.50
3	A	1705	BCO	C8-C6	-2.25	1.35	1.40
3	A	1705	BCO	P1-O6	-2.19	1.46	1.54
3	A	1705	BCO	O1-C4	2.16	1.44	1.41
3	A	1705	BCO	C12-C8	-2.13	1.35	1.43
3	A	1705	BCO	C2-C4	-2.09	1.50	1.53

All (8) bond angle outliers are listed below:

Mol	Chain	Res	Type	Atoms	Z	Observed(°)	Ideal(°)
3	A	1705	BCO	N3-C15-N4	-6.32	118.80	128.68
3	A	1705	BCO	C24-C23-C22	-4.77	100.91	112.72
3	A	1705	BCO	O17-C22-C23	-3.78	119.53	123.99
3	A	1705	BCO	P3-O7-P2	-3.53	120.72	132.83
3	A	1705	BCO	C23-C22-S1	3.05	117.00	113.46
3	A	1705	BCO	C18-C19-N7	-2.83	111.66	116.42
3	A	1705	BCO	C18-C17-N6	-2.19	107.47	111.90
3	A	1705	BCO	O6-P1-O2	2.16	115.66	105.99

There are no chirality outliers.

All (8) torsion outliers are listed below:

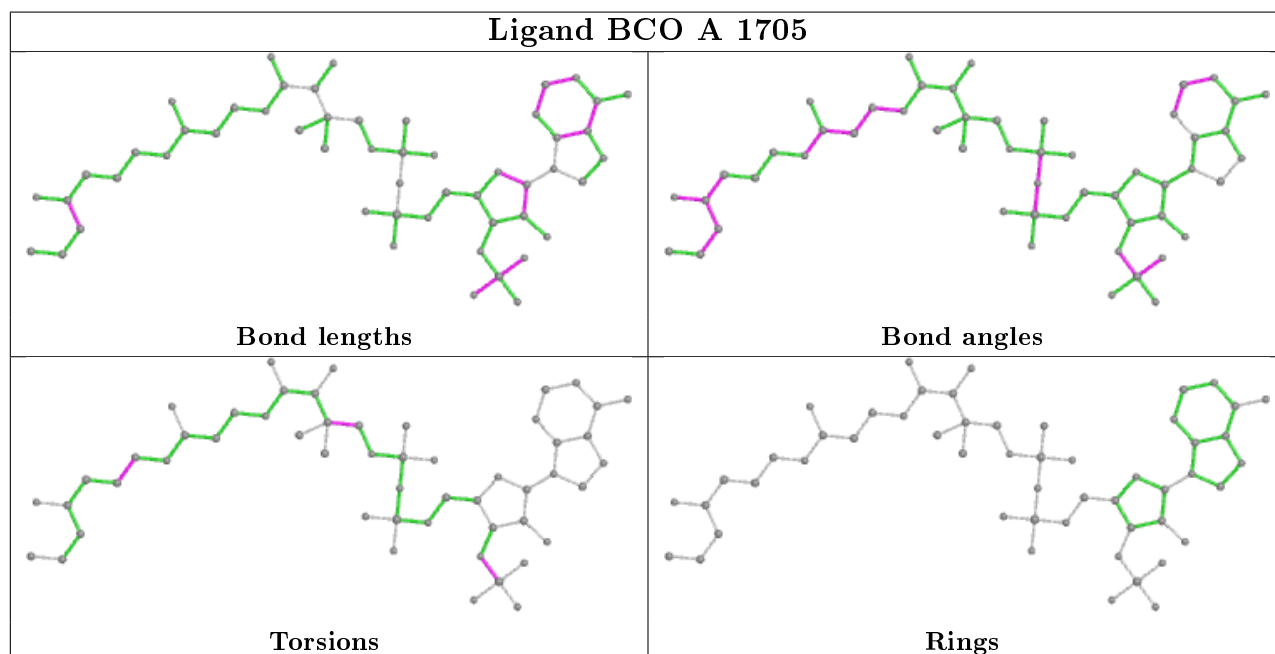
Mol	Chain	Res	Type	Atoms
4	A	1708	GOL	C1-C2-C3-O3
4	A	1707	GOL	O1-C1-C2-O2
4	A	1707	GOL	O1-C1-C2-C3
4	A	1708	GOL	O2-C2-C3-O3
3	A	1705	BCO	C1-O2-P1-O5
4	A	1708	GOL	O1-C1-C2-O2
3	A	1705	BCO	O8-C11-C9-C14
3	A	1705	BCO	N7-C20-C21-S1

There are no ring outliers.

1 monomer is involved in 1 short contact:

Mol	Chain	Res	Type	Clashes	Symm-Clashes
4	A	1708	GOL	1	0

The following is a two-dimensional graphical depiction of Mogul quality analysis of bond lengths, bond angles, torsion angles, and ring geometry for all instances of the Ligand of Interest. In addition, ligands with molecular weight > 250 and outliers as shown on the validation Tables will also be included. For torsion angles, if less than 5% of the Mogul distribution of torsion angles is within 10 degrees of the torsion angle in question, then that torsion angle is considered an outlier. Any bond that is central to one or more torsion angles identified as an outlier by Mogul will be highlighted in the graph. For rings, the root-mean-square deviation (RMSD) between the ring in question and similar rings identified by Mogul is calculated over all ring torsion angles. If the average RMSD is greater than 60 degrees and the minimal RMSD between the ring in question and any Mogul-identified rings is also greater than 60 degrees, then that ring is considered an outlier. The outliers are highlighted in purple. The color gray indicates Mogul did not find sufficient equivalents in the CSD to analyse the geometry.



## 5.7 Other polymers [i](#)

There are no such residues in this entry.

## 5.8 Polymer linkage issues [i](#)

The following chains have linkage breaks:

Mol	Chain	Number of breaks
1	A	1

All chain breaks are listed below:

Model	Chain	Residue-1	Atom-1	Residue-2	Atom-2	Distance (Å)
1	A	1524:GLY	C	1581:SER	N	1.80

## 6 Fit of model and data

### 6.1 Protein, DNA and RNA chains

In the following table, the column labelled ‘#RSRZ> 2’ contains the number (and percentage) of RSRZ outliers, followed by percent RSRZ outliers for the chain as percentile scores relative to all X-ray entries and entries of similar resolution. The OWAB column contains the minimum, median, 95<sup>th</sup> percentile and maximum values of the occupancy-weighted average B-factor per residue. The column labelled ‘Q< 0.9’ lists the number of (and percentage) of residues with an average occupancy less than 0.9.

Mol	Chain	Analysed	<RSRZ>	#RSRZ>2	OWAB(Å <sup>2</sup> )	Q<0.9
1	A	551/578 (95%)	0.43	67 (12%) <b>4</b> <b>3</b>	21, 38, 88, 114	2 (0%)

All (67) RSRZ outliers are listed below:

Mol	Chain	Res	Type	RSRZ
1	A	1203	LYS	6.3
1	A	1186	PRO	5.7
1	A	1185	ILE	5.5
1	A	1215	LEU	4.6
1	A	1223	GLN	4.3
1	A	1200	PHE	4.2
1	A	1086	ILE	4.2
1	A	1177	CYS	4.1
1	A	1178	TYR	4.1
1	A	1084	LEU	4.0
1	A	1211	GLU	3.9
1	A	1604	PRO	3.9
1	A	1184	THR	3.8
1	A	1607	ASN	3.8
1	A	1210	GLY	3.7
1	A	1662	SER	3.6
1	A	1048	ILE	3.6
1	A	1189	ALA	3.5
1	A	1176	CYS	3.5
1	A	1201	CYS	3.5
1	A	1205	PHE	3.5
1	A	1224	THR	3.4
1	A	1190	THR	3.4
1	A	1135	THR	3.3
1	A	1225	THR	3.3
1	A	1087	PRO	3.2
1	A	1214	SER	3.2

*Continued on next page...*

*Continued from previous page...*

<b>Mol</b>	<b>Chain</b>	<b>Res</b>	<b>Type</b>	<b>RSRZ</b>
1	A	1137	ARG	3.1
1	A	1173	GLN	3.1
1	A	1421	TYR	3.0
1	A	1207	GLU	3.0
1	A	1174	THR	3.0
1	A	1188	ASP	2.9
1	A	1073	LEU	2.8
1	A	1175	LEU	2.6
1	A	1422	LEU	2.5
1	A	1213	VAL	2.5
1	A	1133	ARG	2.5
1	A	1398	LEU	2.5
1	A	1082	GLN	2.5
1	A	1183	CYS	2.5
1	A	1198	TYR	2.5
1	A	1417	ILE	2.5
1	A	1047	LYS	2.4
1	A	1208	ILE	2.4
1	A	1279	SER	2.4
1	A	1049	PHE	2.4
1	A	1393	VAL	2.3
1	A	1280	ALA	2.3
1	A	1374	PHE	2.3
1	A	1418	LEU	2.3
1	A	1187	ARG	2.3
1	A	1606	ALA	2.3
1	A	1361	PHE	2.3
1	A	1131	TYR	2.2
1	A	1378	VAL	2.2
1	A	1138	VAL	2.2
1	A	1204	CYS	2.2
1	A	1069	ASP	2.2
1	A	1191	TYR	2.1
1	A	1092	ILE	2.1
1	A	1395	ILE	2.1
1	A	1216	GLY	2.1
1	A	1052	GLU	2.0
1	A	1278	LYS	2.0
1	A	1090	PHE	2.0
1	A	1080	ASP	2.0



## 6.2 Non-standard residues in protein, DNA, RNA chains [i](#)

There are no non-standard protein/DNA/RNA residues in this entry.

## 6.3 Carbohydrates [i](#)

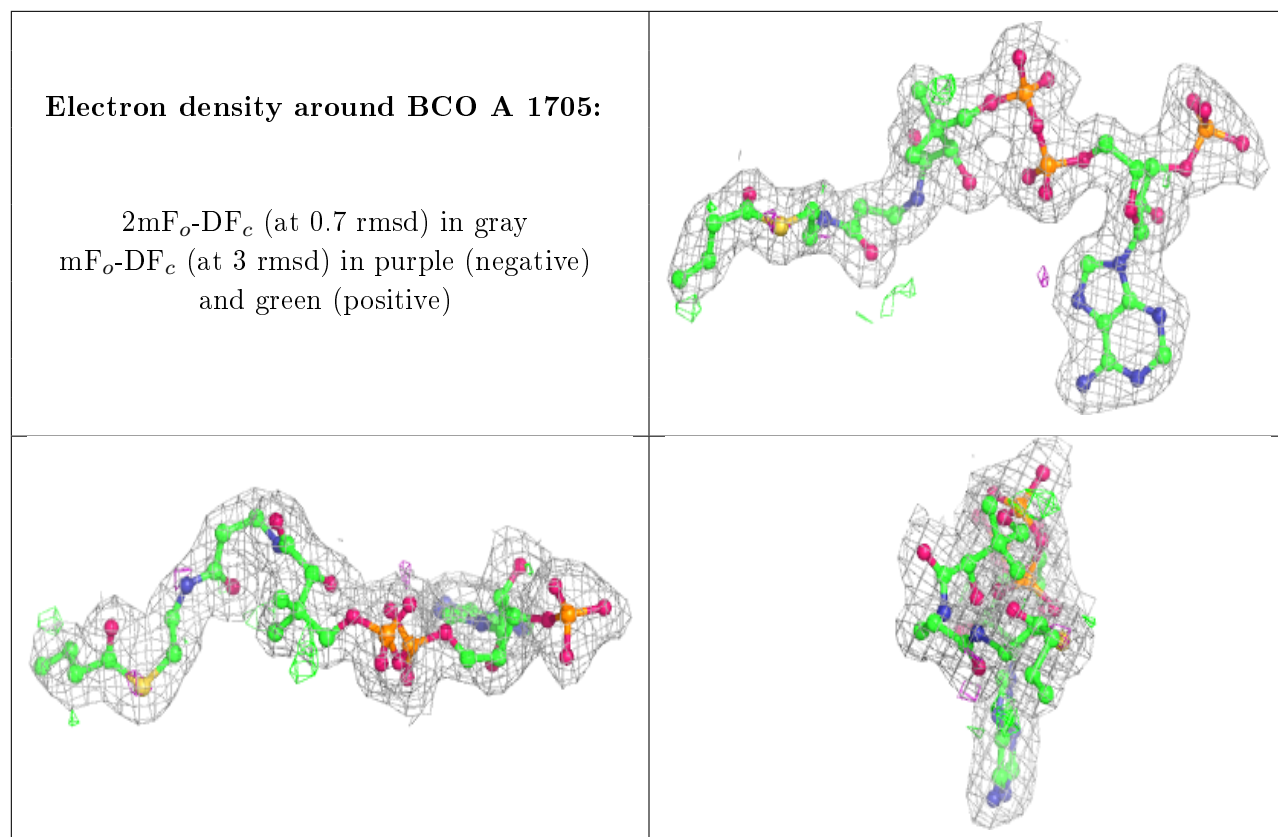
There are no carbohydrates in this entry.

## 6.4 Ligands [i](#)

In the following table, the Atoms column lists the number of modelled atoms in the group and the number defined in the chemical component dictionary. The B-factors column lists the minimum, median, 95<sup>th</sup> percentile and maximum values of B factors of atoms in the group. The column labelled 'Q< 0.9' lists the number of atoms with occupancy less than 0.9.

Mol	Type	Chain	Res	Atoms	RSCC	RSR	B-factors( $\text{\AA}^2$ )	Q<0.9
5	DMS	A	1709	4/4	0.75	0.31	42,43,51,60	0
6	CL	A	1710	1/1	0.88	0.18	60,60,60,60	0
4	GOL	A	1708	6/6	0.90	0.20	53,60,62,65	0
4	GOL	A	1706	6/6	0.94	0.12	43,48,51,54	0
2	ZN	A	1701	1/1	0.94	0.06	97,97,97,97	0
4	GOL	A	1707	6/6	0.95	0.14	30,45,49,52	0
3	BCO	A	1705	53/53	0.97	0.10	21,31,47,55	0
2	ZN	A	1702	1/1	0.99	0.06	46,46,46,46	0
2	ZN	A	1703	1/1	1.00	0.09	33,33,33,33	0
2	ZN	A	1704	1/1	1.00	0.04	29,29,29,29	1

The following is a graphical depiction of the model fit to experimental electron density of all instances of the Ligand of Interest. In addition, ligands with molecular weight > 250 and outliers as shown on the geometry validation Tables will also be included. Each fit is shown from different orientation to approximate a three-dimensional view.



## 6.5 Other polymers [i](#)

There are no such residues in this entry.