



Full wwPDB NMR Structure Validation Report ⓘ

Jun 4, 2023 – 01:23 PM EDT

PDB ID : 2LLX
BMRB ID : 18092
Title : Solution structure of the N-terminal domain of human polypeptide chain release factor eRF1
Authors : Polshakov, V.I.; Eliseev, B.D.; Birdsall, B.; Frolova, L.Y.
Deposited on : 2011-11-18

This is a Full wwPDB NMR Structure Validation Report for a publicly released PDB entry.

We welcome your comments at validation@mail.wwpdb.org

A user guide is available at

<https://www.wwpdb.org/validation/2017/NMRValidationReportHelp>

with specific help available everywhere you see the ⓘ symbol.

The types of validation reports are described at

<http://www.wwpdb.org/validation/2017/FAQs#types>.

The following versions of software and data (see [references ⓘ](#)) were used in the production of this report:

MolProbity : 4.02b-467
Percentile statistics : 20191225.v01 (using entries in the PDB archive December 25th 2019)
wwPDB-RCI : v_1n_11_5_13_A (Berjanski et al., 2005)
PANAV : Wang et al. (2010)
wwPDB-ShiftChecker : v1.2
BMRB Restraints Analysis : v1.2
Ideal geometry (proteins) : Engh & Huber (2001)
Ideal geometry (DNA, RNA) : Parkinson et al. (1996)
Validation Pipeline (wwPDB-VP) : 2.33

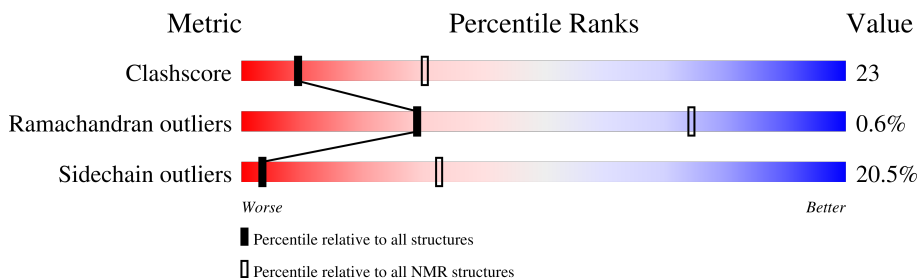
1 Overall quality at a glance

The following experimental techniques were used to determine the structure:

SOLUTION NMR

The overall completeness of chemical shifts assignment is 86%.

Percentile scores (ranging between 0-100) for global validation metrics of the entry are shown in the following graphic. The table shows the number of entries on which the scores are based.



Metric	Whole archive (#Entries)	NMR archive (#Entries)
Clashscore	158937	12864
Ramachandran outliers	154571	11451
Sidechain outliers	154315	11428

The table below summarises the geometric issues observed across the polymeric chains and their fit to the experimental data. The red, orange, yellow and green segments indicate the fraction of residues that contain outliers for ≥ 3 , 2, 1 and 0 types of geometric quality criteria. A cyan segment indicates the fraction of residues that are not part of the well-defined cores, and a grey segment represents the fraction of residues that are not modelled. The numeric value for each fraction is indicated below the corresponding segment, with a dot representing fractions $\leq 5\%$

Mol	Chain	Length	Quality of chain
1	A	150	

2 Ensemble composition and analysis i

This entry contains 20 models. Model 19 is the overall representative, medoid model (most similar to other models). The authors have identified model 1 as representative, based on the following criterion: *closest to the average*.

The following residues are included in the computation of the global validation metrics.

Well-defined (core) protein residues			
Well-defined core	Residue range (total)	Backbone RMSD (Å)	Medoid model
1	A:8-A:142 (135)	0.50	19

Ill-defined regions of proteins are excluded from the global statistics.

Ligands and non-protein polymers are included in the analysis.

The models can be grouped into 4 clusters and 2 single-model clusters were found.

Cluster number	Models
1	1, 8, 9, 13, 14, 17, 19
2	2, 4, 10, 15, 16, 20
3	6, 12, 18
4	3, 7
Single-model clusters	5; 11

3 Entry composition

There is only 1 type of molecule in this entry. The entry contains 2249 atoms, of which 1150 are hydrogens and 0 are deuteriums.

- Molecule 1 is a protein called Eukaryotic peptide chain release factor subunit 1.

Mol	Chain	Residues	Atoms					Trace	
			Total	C	H	N	O		S
1	A	142	2249	697	1150	189	208	5	0

There are 8 discrepancies between the modelled and reference sequences:

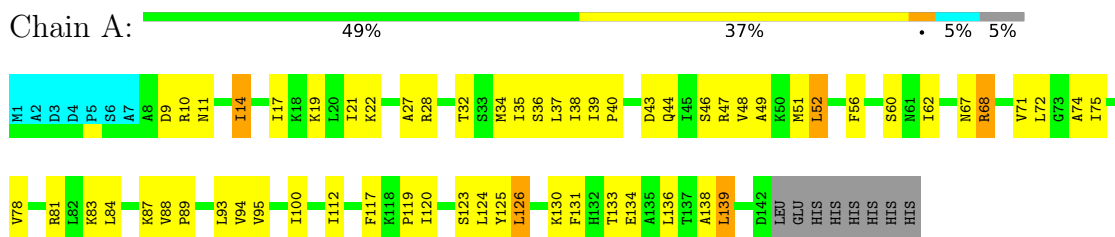
Chain	Residue	Modelled	Actual	Comment	Reference
A	143	LEU	-	expression tag	UNP P62495
A	144	GLU	-	expression tag	UNP P62495
A	145	HIS	-	expression tag	UNP P62495
A	146	HIS	-	expression tag	UNP P62495
A	147	HIS	-	expression tag	UNP P62495
A	148	HIS	-	expression tag	UNP P62495
A	149	HIS	-	expression tag	UNP P62495
A	150	HIS	-	expression tag	UNP P62495

4 Residue-property plots [i](#)

4.1 Average score per residue in the NMR ensemble

These plots are provided for all protein, RNA, DNA and oligosaccharide chains in the entry. The first graphic is the same as shown in the summary in section 1 of this report. The second graphic shows the sequence where residues are colour-coded according to the number of geometric quality criteria for which they contain at least one outlier: green = 0, yellow = 1, orange = 2 and red = 3 or more. Stretches of 2 or more consecutive residues without any outliers are shown as green connectors. Residues which are classified as ill-defined in the NMR ensemble, are shown in cyan with an underline colour-coded according to the previous scheme. Residues which were present in the experimental sample, but not modelled in the final structure are shown in grey.

- Molecule 1: Eukaryotic peptide chain release factor subunit 1

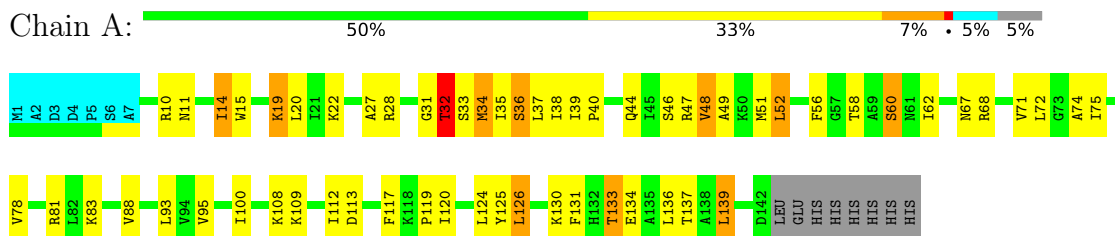


4.2 Scores per residue for each member of the ensemble

Colouring as in section 4.1 above.

4.2.1 Score per residue for model 1

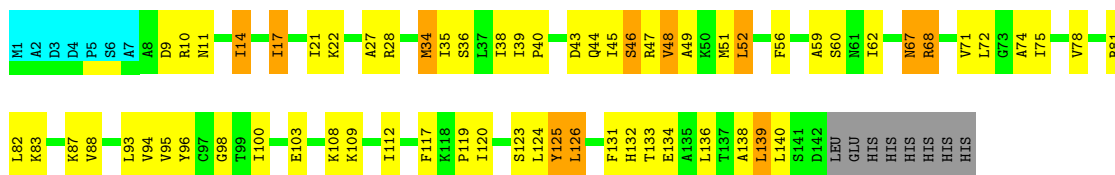
- Molecule 1: Eukaryotic peptide chain release factor subunit 1



4.2.2 Score per residue for model 2

- Molecule 1: Eukaryotic peptide chain release factor subunit 1

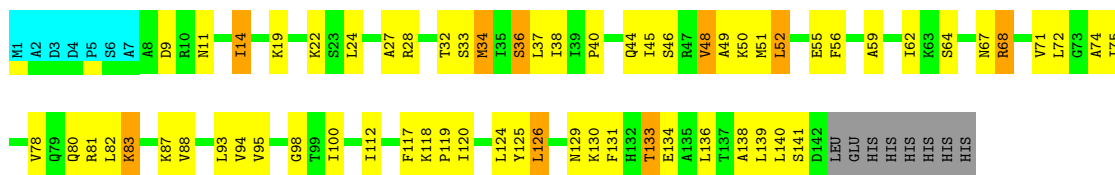




4.2.3 Score per residue for model 3

- Molecule 1: Eukaryotic peptide chain release factor subunit 1

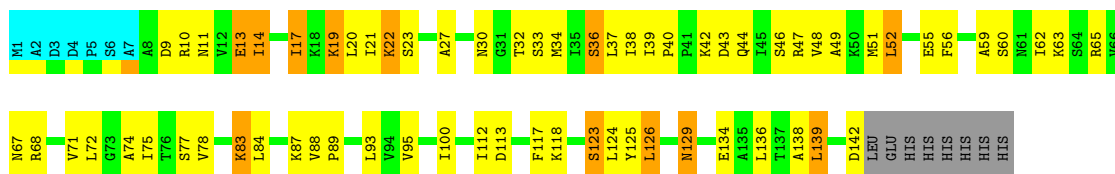
Chain A: 47% 37% 6% 5% 5%



4.2.4 Score per residue for model 4

- Molecule 1: Eukaryotic peptide chain release factor subunit 1

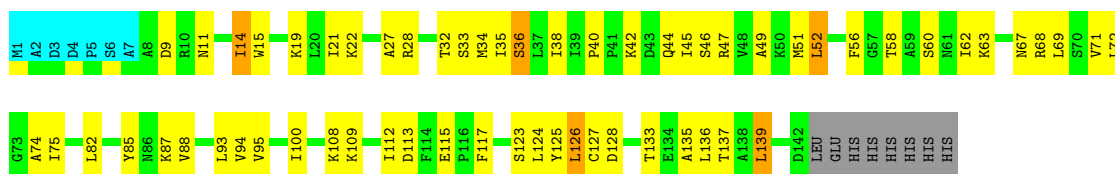
Chain A: 45% 37% 8% 5% 5%



4.2.5 Score per residue for model 5

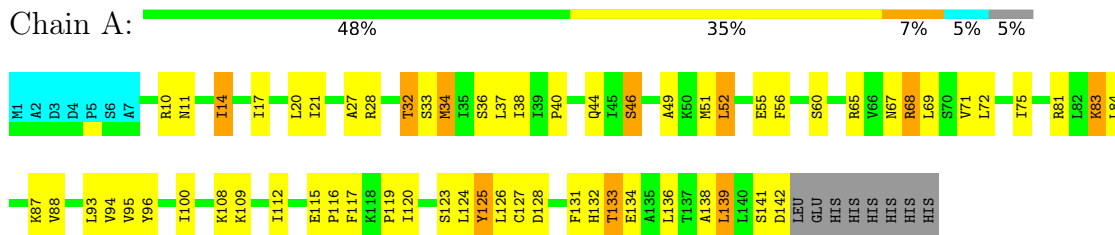
- Molecule 1: Eukaryotic peptide chain release factor subunit 1

Chain A: 49% 37% 5% 5%



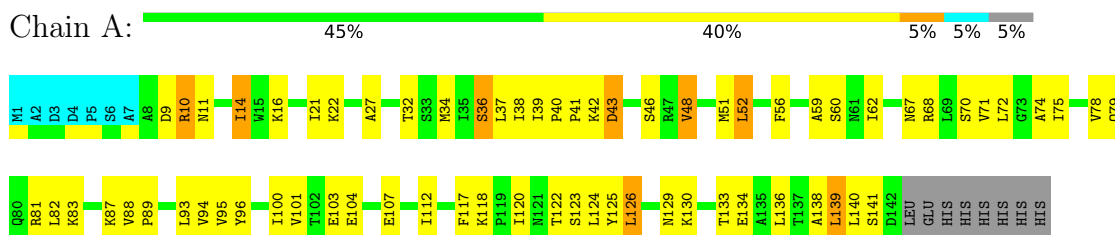
4.2.6 Score per residue for model 6

- Molecule 1: Eukaryotic peptide chain release factor subunit 1



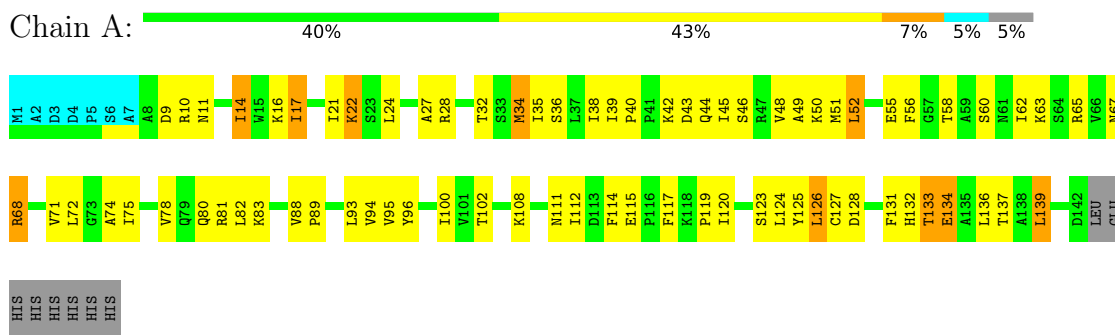
4.2.7 Score per residue for model 7

- Molecule 1: Eukaryotic peptide chain release factor subunit 1



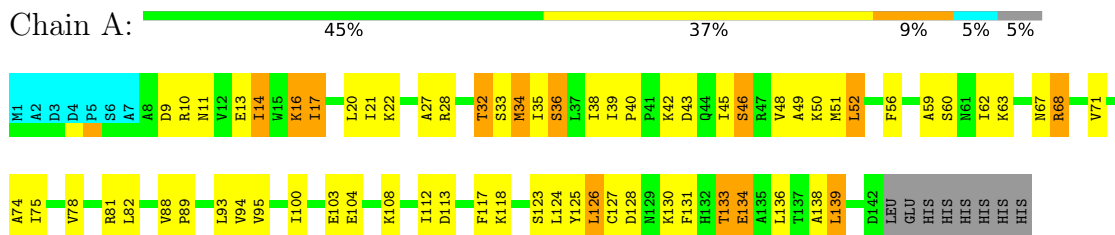
4.2.8 Score per residue for model 8

- Molecule 1: Eukaryotic peptide chain release factor subunit 1



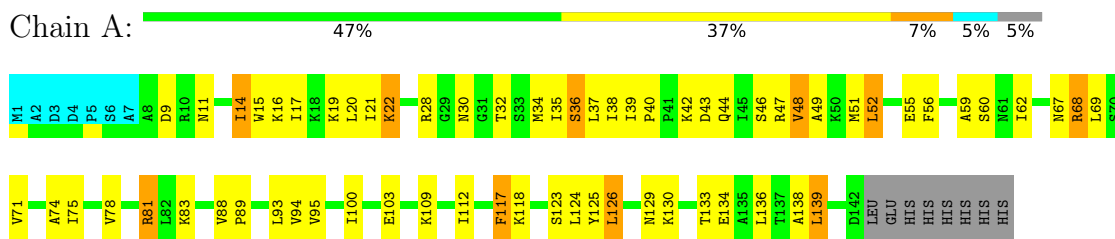
4.2.9 Score per residue for model 9

- Molecule 1: Eukaryotic peptide chain release factor subunit 1



4.2.10 Score per residue for model 10

- Molecule 1: Eukaryotic peptide chain release factor subunit 1



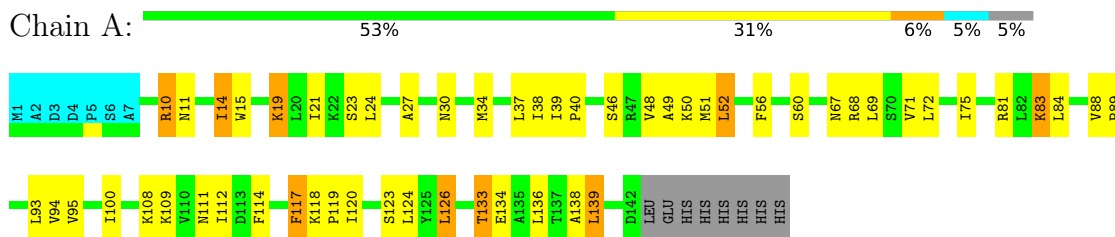
4.2.11 Score per residue for model 11

- Molecule 1: Eukaryotic peptide chain release factor subunit 1



4.2.12 Score per residue for model 12

- Molecule 1: Eukaryotic peptide chain release factor subunit 1



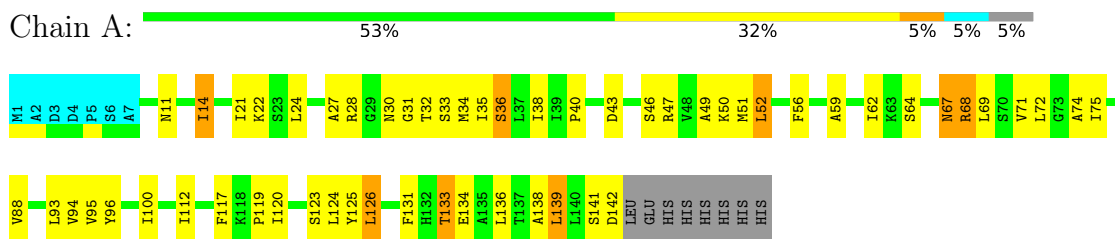
4.2.13 Score per residue for model 13

- Molecule 1: Eukaryotic peptide chain release factor subunit 1



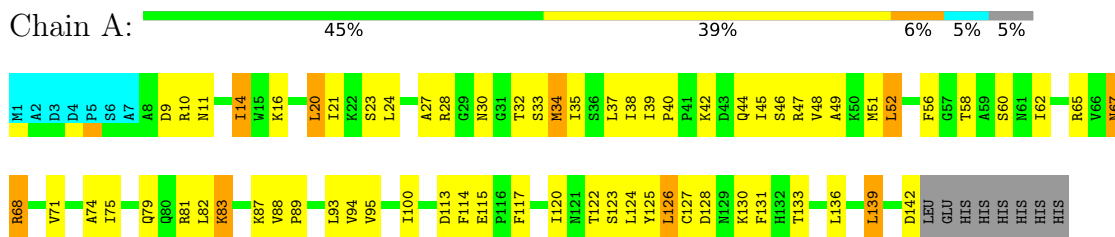
4.2.18 Score per residue for model 18

- Molecule 1: Eukaryotic peptide chain release factor subunit 1



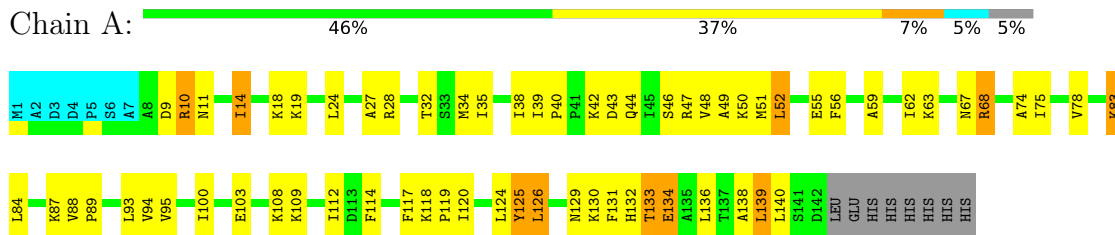
4.2.19 Score per residue for model 19 (medoid)

- Molecule 1: Eukaryotic peptide chain release factor subunit 1



4.2.20 Score per residue for model 20

- Molecule 1: Eukaryotic peptide chain release factor subunit 1



5 Refinement protocol and experimental data overview

The models were refined using the following method: *simulated annealing*.

Of the 50 calculated structures, 20 were deposited, based on the following criterion: *structures with the least restraint violations*.

The following table shows the software used for structure solution, optimisation and refinement.

Software name	Classification	Version
CNS	structure solution	
CNS	refinement	

The following table shows chemical shift validation statistics as aggregates over all chemical shift files. Detailed validation can be found in section 7 of this report.

Chemical shift file(s)	working_cs.cif
Number of chemical shift lists	1
Total number of shifts	1697
Number of shifts mapped to atoms	1666
Number of unparsed shifts	0
Number of shifts with mapping errors	31
Number of shifts with mapping warnings	0
Assignment completeness (well-defined parts)	86%

6 Model quality

6.1 Standard geometry

There are no covalent bond-length or bond-angle outliers.

There are no bond-length outliers.

There are no bond-angle outliers.

There are no chirality outliers.

There are no planarity outliers.

6.2 Too-close contacts

In the following table, the Non-H and H(model) columns list the number of non-hydrogen atoms and hydrogen atoms in each chain respectively. The H(added) column lists the number of hydrogen atoms added and optimized by MolProbity. The Clashes column lists the number of clashes averaged over the ensemble.

Mol	Chain	Non-H	H(model)	H(added)	Clashes
1	A	1052	1109	1108	49±4
All	All	21040	22180	22160	977

The all-atom clashscore is defined as the number of clashes found per 1000 atoms (including hydrogen atoms). The all-atom clashscore for this structure is 23.

All unique clashes are listed below, sorted by their clash magnitude.

Atom-1	Atom-2	Clash(Å)	Distance(Å)	Models	
				Worst	Total
1:A:52:LEU:HD12	1:A:75:ILE:HG23	1.08	1.20	16	18
1:A:133:THR:HG22	1:A:136:LEU:HD12	0.93	1.38	7	18
1:A:27:ALA:HB1	1:A:100:ILE:HG21	0.86	1.46	5	17
1:A:14:ILE:HD12	1:A:117:PHE:CZ	0.85	2.06	5	19
1:A:117:PHE:HB3	1:A:139:LEU:HD21	0.80	1.53	3	2
1:A:52:LEU:CD1	1:A:75:ILE:HG23	0.80	2.06	4	20
1:A:67:ASN:O	1:A:71:VAL:HG23	0.79	1.78	7	19
1:A:124:LEU:HD21	1:A:126:LEU:HD11	0.78	1.55	5	4
1:A:24:LEU:HD22	1:A:131:PHE:CD2	0.78	2.13	13	5
1:A:32:THR:HG22	1:A:129:ASN:OD1	0.78	1.79	15	5
1:A:126:LEU:HD22	1:A:132:HIS:CD2	0.77	2.14	2	5
1:A:124:LEU:CD2	1:A:126:LEU:HD11	0.74	2.13	5	4
1:A:52:LEU:HD11	1:A:75:ILE:HG23	0.73	1.61	10	6
1:A:32:THR:HG23	1:A:128:ASP:HA	0.72	1.60	8	7

Continued on next page...

Continued from previous page...

Atom-1	Atom-2	Clash(Å)	Distance(Å)	Models	
				Worst	Total
1:A:134:GLU:O	1:A:138:ALA:HB2	0.71	1.86	4	14
1:A:62:ILE:HD13	1:A:67:ASN:OD1	0.70	1.86	11	5
1:A:88:VAL:HG13	1:A:93:LEU:HB2	0.69	1.64	17	20
1:A:139:LEU:HD13	1:A:139:LEU:N	0.69	2.02	5	13
1:A:45:ILE:HG23	1:A:82:LEU:HD22	0.69	1.64	2	7
1:A:139:LEU:CD1	1:A:140:LEU:HD22	0.69	2.17	3	1
1:A:133:THR:CG2	1:A:136:LEU:HD12	0.69	2.18	8	7
1:A:126:LEU:N	1:A:126:LEU:HD22	0.68	2.02	11	3
1:A:124:LEU:HD23	1:A:125:TYR:N	0.68	2.03	8	15
1:A:139:LEU:HD11	1:A:140:LEU:HD22	0.68	1.65	3	1
1:A:125:TYR:C	1:A:126:LEU:HD13	0.68	2.08	4	4
1:A:13:GLU:O	1:A:17:ILE:HD12	0.68	1.87	11	8
1:A:62:ILE:HD12	1:A:68:ARG:HA	0.68	1.66	2	15
1:A:52:LEU:HD21	1:A:78:VAL:HB	0.67	1.65	10	2
1:A:21:ILE:HD12	1:A:22:LYS:N	0.66	2.06	13	5
1:A:56:PHE:HB2	1:A:75:ILE:HG21	0.66	1.66	18	20
1:A:39:ILE:CD1	1:A:48:VAL:HG21	0.66	2.20	16	7
1:A:37:LEU:C	1:A:38:ILE:HD12	0.66	2.11	1	3
1:A:39:ILE:HG12	1:A:48:VAL:HG21	0.66	1.66	14	14
1:A:37:LEU:HD21	1:A:48:VAL:HG11	0.66	1.67	7	10
1:A:16:LYS:HD3	1:A:20:LEU:HD12	0.65	1.68	9	1
1:A:38:ILE:HA	1:A:94:VAL:HG22	0.64	1.67	10	15
1:A:45:ILE:HD11	1:A:87:LYS:O	0.64	1.93	13	2
1:A:38:ILE:HD13	1:A:124:LEU:HD22	0.63	1.70	4	3
1:A:124:LEU:HD21	1:A:126:LEU:HD21	0.62	1.69	11	2
1:A:21:ILE:HA	1:A:24:LEU:HD12	0.62	1.72	19	5
1:A:74:ALA:O	1:A:78:VAL:HG23	0.62	1.95	16	9
1:A:60:SER:OG	1:A:72:LEU:HD11	0.61	1.94	6	11
1:A:124:LEU:HD13	1:A:134:GLU:OE2	0.61	1.94	13	1
1:A:52:LEU:HD12	1:A:75:ILE:CG2	0.61	2.16	11	9
1:A:139:LEU:HD13	1:A:139:LEU:H	0.61	1.56	5	1
1:A:11:ASN:O	1:A:14:ILE:HG22	0.61	1.96	18	20
1:A:52:LEU:HD22	1:A:125:TYR:CE2	0.61	2.31	2	1
1:A:95:VAL:HG13	1:A:112:ILE:O	0.60	1.96	4	19
1:A:119:PRO:O	1:A:120:ILE:HD13	0.60	1.96	8	12
1:A:32:THR:HG23	1:A:128:ASP:CA	0.60	2.26	17	6
1:A:124:LEU:HG	1:A:126:LEU:HD11	0.60	1.73	11	3
1:A:31:GLY:O	1:A:32:THR:HG23	0.60	1.97	1	1
1:A:124:LEU:CG	1:A:126:LEU:HD11	0.60	2.26	11	4
1:A:83:LYS:HD3	1:A:84:LEU:HD23	0.60	1.74	15	10
1:A:126:LEU:HD22	1:A:126:LEU:H	0.58	1.58	4	3

Continued on next page...

Continued from previous page...

Atom-1	Atom-2	Clash(Å)	Distance(Å)	Models	
				Worst	Total
1:A:126:LEU:N	1:A:126:LEU:HD13	0.58	2.12	5	8
1:A:93:LEU:HD11	1:A:95:VAL:HG23	0.58	1.74	16	12
1:A:14:ILE:HD12	1:A:117:PHE:CE1	0.58	2.34	5	1
1:A:136:LEU:O	1:A:139:LEU:HD22	0.58	1.99	12	15
1:A:38:ILE:HD12	1:A:38:ILE:N	0.58	2.14	13	16
1:A:32:THR:HG22	1:A:127:CYS:SG	0.58	2.39	6	7
1:A:35:ILE:HD12	1:A:74:ALA:CB	0.57	2.30	16	10
1:A:37:LEU:HD21	1:A:48:VAL:CG1	0.57	2.29	7	2
1:A:95:VAL:HG22	1:A:113:ASP:CB	0.57	2.29	19	4
1:A:38:ILE:HG23	1:A:94:VAL:CG2	0.57	2.30	16	8
1:A:46:SER:O	1:A:49:ALA:HB3	0.56	2.00	18	17
1:A:32:THR:HG22	1:A:129:ASN:CG	0.56	2.20	4	8
1:A:88:VAL:HG13	1:A:93:LEU:N	0.56	2.15	5	19
1:A:39:ILE:CG1	1:A:48:VAL:HG21	0.56	2.31	14	6
1:A:114:PHE:HZ	1:A:136:LEU:HD11	0.56	1.60	11	5
1:A:32:THR:HG22	1:A:129:ASN:ND2	0.56	2.15	7	3
1:A:126:LEU:HD22	1:A:126:LEU:C	0.56	2.21	19	11
1:A:139:LEU:HG	1:A:140:LEU:N	0.56	2.14	7	2
1:A:139:LEU:HD22	1:A:139:LEU:H	0.56	1.60	13	1
1:A:88:VAL:HG13	1:A:93:LEU:CB	0.55	2.32	13	19
1:A:62:ILE:HD13	1:A:67:ASN:HD22	0.55	1.62	10	3
1:A:62:ILE:CD1	1:A:71:VAL:HG21	0.54	2.33	4	1
1:A:59:ALA:HB3	1:A:72:LEU:CD2	0.54	2.32	2	6
1:A:134:GLU:HA	1:A:137:THR:HG22	0.54	1.80	1	2
1:A:14:ILE:HD12	1:A:117:PHE:CE2	0.54	2.38	2	6
1:A:93:LEU:CD1	1:A:95:VAL:HG23	0.54	2.33	16	12
1:A:35:ILE:HG21	1:A:78:VAL:HG21	0.54	1.80	1	3
1:A:126:LEU:HD22	1:A:126:LEU:O	0.53	2.03	13	5
1:A:38:ILE:HD13	1:A:124:LEU:HB3	0.53	1.80	15	2
1:A:133:THR:HG22	1:A:136:LEU:CD1	0.53	2.32	8	1
1:A:75:ILE:HG22	1:A:79:GLN:OE1	0.53	2.04	16	3
1:A:39:ILE:HD12	1:A:93:LEU:HD12	0.52	1.81	20	5
1:A:14:ILE:HD12	1:A:117:PHE:HZ	0.52	1.60	13	9
1:A:40:PRO:O	1:A:88:VAL:HG11	0.52	2.03	8	20
1:A:134:GLU:OE2	1:A:135:ALA:HB2	0.52	2.04	17	1
1:A:38:ILE:HG23	1:A:94:VAL:HG22	0.52	1.80	16	8
1:A:38:ILE:HD13	1:A:124:LEU:CD2	0.52	2.35	4	3
1:A:17:ILE:O	1:A:21:ILE:HG23	0.52	2.05	2	5
1:A:62:ILE:HG21	1:A:67:ASN:OD1	0.51	2.04	11	1
1:A:68:ARG:HD3	1:A:69:LEU:HD22	0.51	1.82	10	1
1:A:117:PHE:CD1	1:A:139:LEU:HD11	0.51	2.41	2	1

Continued on next page...

Continued from previous page...

Atom-1	Atom-2	Clash(Å)	Distance(Å)	Models	
				Worst	Total
1:A:16:LYS:CD	1:A:17:ILE:N	0.51	2.74	9	1
1:A:114:PHE:CZ	1:A:136:LEU:HD11	0.51	2.39	11	3
1:A:45:ILE:HG21	1:A:85:TYR:O	0.51	2.06	11	1
1:A:124:LEU:CD2	1:A:126:LEU:HD21	0.50	2.36	11	2
1:A:35:ILE:HG23	1:A:125:TYR:CE1	0.50	2.42	2	2
1:A:35:ILE:HG23	1:A:125:TYR:HE1	0.50	1.65	20	3
1:A:117:PHE:CG	1:A:140:LEU:HD21	0.49	2.42	3	1
1:A:126:LEU:CD1	1:A:126:LEU:N	0.49	2.75	16	10
1:A:126:LEU:N	1:A:126:LEU:CD1	0.49	2.75	13	2
1:A:45:ILE:CG2	1:A:82:LEU:HD22	0.49	2.37	13	3
1:A:68:ARG:NH2	1:A:69:LEU:HD21	0.49	2.22	17	1
1:A:68:ARG:HG2	1:A:69:LEU:HD22	0.49	1.85	18	1
1:A:60:SER:OG	1:A:72:LEU:HD21	0.48	2.08	1	1
1:A:36:SER:CB	1:A:126:LEU:HD11	0.48	2.38	7	6
1:A:101:VAL:HG22	1:A:107:GLU:HG3	0.48	1.84	7	1
1:A:117:PHE:HB3	1:A:139:LEU:HD22	0.48	1.84	2	1
1:A:126:LEU:CD2	1:A:132:HIS:CD2	0.48	2.97	15	5
1:A:38:ILE:CD1	1:A:135:ALA:HB3	0.48	2.39	5	1
1:A:21:ILE:HG22	1:A:133:THR:HG21	0.48	1.86	6	1
1:A:139:LEU:HD21	1:A:140:LEU:CD1	0.48	2.38	2	1
1:A:124:LEU:C	1:A:124:LEU:HD23	0.48	2.29	20	1
1:A:37:LEU:HD22	1:A:52:LEU:HD23	0.47	1.87	16	1
1:A:100:ILE:HD12	1:A:100:ILE:C	0.47	2.30	16	6
1:A:136:LEU:O	1:A:139:LEU:CD2	0.47	2.63	5	2
1:A:28:ARG:C	1:A:100:ILE:HG22	0.47	2.29	11	1
1:A:35:ILE:HD12	1:A:74:ALA:HB3	0.47	1.85	16	2
1:A:124:LEU:HD22	1:A:126:LEU:HD12	0.47	1.87	16	2
1:A:34:MET:CE	1:A:131:PHE:CE2	0.46	2.98	6	6
1:A:126:LEU:N	1:A:126:LEU:CD2	0.46	2.74	11	2
1:A:34:MET:CE	1:A:131:PHE:CZ	0.46	2.99	9	5
1:A:52:LEU:HD21	1:A:78:VAL:CB	0.46	2.38	1	1
1:A:83:LYS:HD3	1:A:84:LEU:CD2	0.46	2.40	13	5
1:A:52:LEU:CD2	1:A:125:TYR:CE1	0.46	2.99	17	4
1:A:10:ARG:O	1:A:117:PHE:CE1	0.45	2.69	13	12
1:A:139:LEU:HG	1:A:140:LEU:HD12	0.45	1.88	7	1
1:A:17:ILE:HD13	1:A:117:PHE:CD1	0.45	2.47	14	1
1:A:40:PRO:HD3	1:A:123:SER:OG	0.45	2.12	15	2
1:A:116:PRO:CB	1:A:120:ILE:HD11	0.45	2.41	13	1
1:A:15:TRP:CH2	1:A:19:LYS:CD	0.45	2.99	12	2
1:A:124:LEU:HD23	1:A:125:TYR:H	0.45	1.70	6	1
1:A:15:TRP:CZ2	1:A:19:LYS:NZ	0.45	2.84	5	2

Continued on next page...

Continued from previous page...

Atom-1	Atom-2	Clash(Å)	Distance(Å)	Models	
				Worst	Total
1:A:120:ILE:HG22	1:A:122:THR:H	0.44	1.73	19	2
1:A:59:ALA:O	1:A:68:ARG:CG	0.44	2.65	9	3
1:A:93:LEU:C	1:A:93:LEU:HD13	0.44	2.32	10	12
1:A:117:PHE:HB3	1:A:139:LEU:CD2	0.44	2.42	7	1
1:A:124:LEU:CD2	1:A:126:LEU:HD12	0.44	2.42	12	1
1:A:20:LEU:CD2	1:A:114:PHE:CE2	0.44	3.00	19	1
1:A:139:LEU:CD2	1:A:140:LEU:CD1	0.44	2.95	2	1
1:A:124:LEU:HD23	1:A:124:LEU:O	0.44	2.11	5	1
1:A:117:PHE:HD2	1:A:139:LEU:HD11	0.44	1.72	7	1
1:A:126:LEU:HD13	1:A:126:LEU:H	0.44	1.73	17	5
1:A:52:LEU:HD21	1:A:125:TYR:CE1	0.44	2.48	9	1
1:A:94:VAL:HG23	1:A:116:PRO:HG3	0.44	1.89	6	2
1:A:35:ILE:CD1	1:A:74:ALA:HB3	0.44	2.42	9	1
1:A:60:SER:HA	1:A:68:ARG:CG	0.43	2.43	10	2
1:A:79:GLN:O	1:A:83:LYS:HD2	0.43	2.13	19	1
1:A:136:LEU:O	1:A:139:LEU:HD23	0.43	2.13	7	1
1:A:134:GLU:O	1:A:138:ALA:CB	0.43	2.65	7	2
1:A:68:ARG:NE	1:A:69:LEU:CD1	0.43	2.82	14	4
1:A:36:SER:HB3	1:A:126:LEU:HD11	0.43	1.90	7	1
1:A:95:VAL:O	1:A:96:TYR:CD1	0.43	2.72	16	4
1:A:10:ARG:O	1:A:117:PHE:CZ	0.43	2.71	4	9
1:A:139:LEU:N	1:A:139:LEU:CD1	0.43	2.75	5	4
1:A:52:LEU:HD22	1:A:125:TYR:HE2	0.43	1.72	6	1
1:A:48:VAL:HG12	1:A:82:LEU:HD11	0.43	1.90	7	1
1:A:52:LEU:HD21	1:A:78:VAL:HG11	0.43	1.90	15	1
1:A:100:ILE:HG13	1:A:108:LYS:O	0.43	2.14	12	1
1:A:19:LYS:HZ2	1:A:19:LYS:HB3	0.42	1.74	4	1
1:A:102:THR:HG21	1:A:108:LYS:NZ	0.42	2.29	16	1
1:A:37:LEU:HD13	1:A:125:TYR:HD2	0.42	1.73	10	1
1:A:59:ALA:HB1	1:A:71:VAL:HB	0.42	1.91	13	2
1:A:117:PHE:CD2	1:A:140:LEU:HD21	0.42	2.50	3	1
1:A:68:ARG:HG3	1:A:69:LEU:N	0.42	2.30	13	1
1:A:96:TYR:HB3	1:A:131:PHE:CE1	0.42	2.50	6	3
1:A:117:PHE:CB	1:A:139:LEU:HD23	0.42	2.45	12	1
1:A:34:MET:HE2	1:A:98:GLY:HA3	0.42	1.91	2	2
1:A:36:SER:HA	1:A:96:TYR:CD1	0.42	2.49	6	4
1:A:36:SER:CB	1:A:126:LEU:CD2	0.42	2.97	5	3
1:A:34:MET:HE2	1:A:131:PHE:CZ	0.42	2.49	9	4
1:A:35:ILE:CD1	1:A:74:ALA:CB	0.42	2.98	9	2
1:A:102:THR:HG23	1:A:108:LYS:HG3	0.41	1.92	8	1
1:A:83:LYS:CD	1:A:84:LEU:HD23	0.41	2.45	13	2

Continued on next page...

Continued from previous page...

Atom-1	Atom-2	Clash(Å)	Distance(Å)	Models	
				Worst	Total
1:A:139:LEU:N	1:A:139:LEU:HD13	0.41	2.30	18	2
1:A:94:VAL:CG1	1:A:96:TYR:CZ	0.41	3.03	16	1
1:A:13:GLU:C	1:A:17:ILE:HD12	0.41	2.36	11	1
1:A:137:THR:HG22	1:A:141:SER:HG	0.41	1.75	13	1
1:A:139:LEU:CD2	1:A:140:LEU:HD12	0.41	2.45	2	1
1:A:41:PRO:CD	1:A:120:ILE:O	0.41	2.68	7	1
1:A:15:TRP:CE2	1:A:19:LYS:HD2	0.41	2.50	10	1
1:A:124:LEU:HD12	1:A:134:GLU:OE2	0.41	2.16	9	1
1:A:36:SER:CB	1:A:126:LEU:CD1	0.41	2.99	14	6
1:A:45:ILE:CD1	1:A:85:TYR:CB	0.41	2.99	5	1
1:A:14:ILE:HD11	1:A:140:LEU:HD21	0.41	1.91	20	1
1:A:15:TRP:CH2	1:A:19:LYS:HD2	0.41	2.50	1	2
1:A:88:VAL:CG1	1:A:93:LEU:N	0.41	2.82	4	1
1:A:21:ILE:HG13	1:A:22:LYS:N	0.41	2.30	17	4
1:A:31:GLY:O	1:A:32:THR:OG1	0.41	2.38	18	1
1:A:95:VAL:HG22	1:A:113:ASP:HB3	0.41	1.93	19	1
1:A:38:ILE:N	1:A:38:ILE:CD1	0.41	2.83	1	1
1:A:80:GLN:O	1:A:83:LYS:HD2	0.41	2.15	3	1
1:A:37:LEU:HD13	1:A:125:TYR:CD2	0.41	2.51	6	1
1:A:117:PHE:CB	1:A:139:LEU:HD21	0.41	2.46	7	1
1:A:52:LEU:CG	1:A:75:ILE:HG23	0.41	2.46	10	1
1:A:68:ARG:NE	1:A:69:LEU:CD2	0.41	2.84	13	1
1:A:62:ILE:HG22	1:A:64:SER:H	0.41	1.76	3	1
1:A:124:LEU:CD2	1:A:126:LEU:CD1	0.40	2.95	5	1
1:A:32:THR:OG1	1:A:32:THR:O	0.40	2.39	18	1
1:A:83:LYS:O	1:A:83:LYS:HG2	0.40	2.14	3	1
1:A:62:ILE:HD13	1:A:67:ASN:ND2	0.40	2.30	18	1
1:A:117:PHE:CB	1:A:139:LEU:CD2	0.40	3.00	17	1
1:A:55:GLU:OE1	1:A:125:TYR:CE2	0.40	2.75	20	1
1:A:39:ILE:N	1:A:93:LEU:O	0.40	2.52	10	1
1:A:37:LEU:CD1	1:A:51:MET:HE1	0.40	2.47	14	1
1:A:134:GLU:O	1:A:138:ALA:N	0.40	2.53	3	1
1:A:81:ARG:CB	1:A:95:VAL:HG11	0.40	2.47	10	1
1:A:93:LEU:HD13	1:A:94:VAL:N	0.40	2.32	11	1

6.3 Torsion angles

6.3.1 Protein backbone

In the following table, the Percentiles column shows the percent Ramachandran outliers of the chain as a percentile score with respect to all PDB entries followed by that with respect to all NMR

entries. The Analysed column shows the number of residues for which the backbone conformation was analysed and the total number of residues.

Mol	Chain	Analysed	Favoured	Allowed	Outliers	Percentiles	
1	A	134/150 (89%)	131±1 (98±1%)	3±1 (2±1%)	1±1 (1±0%)	29	74
All	All	2680/3000 (89%)	2613 (98%)	51 (2%)	16 (1%)	29	74

All 3 unique Ramachandran outliers are listed below. They are sorted by the frequency of occurrence in the ensemble.

Mol	Chain	Res	Type	Models (Total)
1	A	89	PRO	14
1	A	32	THR	1
1	A	43	ASP	1

6.3.2 Protein sidechains [i](#)

In the following table, the Percentiles column shows the percent sidechain outliers of the chain as a percentile score with respect to all PDB entries followed by that with respect to all NMR entries. The Analysed column shows the number of residues for which the sidechain conformation was analysed and the total number of residues.

Mol	Chain	Analysed	Rotameric	Outliers	Percentiles	
1	A	119/132 (90%)	95±4 (79±3%)	24±4 (21±3%)	3	33
All	All	2380/2640 (90%)	1892 (79%)	488 (21%)	3	33

All 63 unique residues with a non-rotameric sidechain are listed below. They are sorted by the frequency of occurrence in the ensemble.

Mol	Chain	Res	Type	Models (Total)
1	A	14	ILE	20
1	A	34	MET	20
1	A	51	MET	20
1	A	52	LEU	20
1	A	126	LEU	19
1	A	139	LEU	19
1	A	83	LYS	17
1	A	28	ARG	16
1	A	9	ASP	15
1	A	68	ARG	14
1	A	44	GLN	13
1	A	47	ARG	13
1	A	81	ARG	13

Continued on next page...

Continued from previous page...

Mol	Chain	Res	Type	Models (Total)
1	A	43	ASP	12
1	A	123	SER	12
1	A	130	LYS	11
1	A	87	LYS	11
1	A	22	LYS	10
1	A	33	SER	10
1	A	36	SER	10
1	A	133	THR	10
1	A	42	LYS	10
1	A	109	LYS	8
1	A	118	LYS	8
1	A	63	LYS	8
1	A	108	LYS	7
1	A	17	ILE	7
1	A	103	GLU	7
1	A	50	LYS	7
1	A	55	GLU	7
1	A	30	ASN	7
1	A	65	ARG	7
1	A	19	LYS	6
1	A	20	LEU	6
1	A	10	ARG	6
1	A	16	LYS	6
1	A	48	VAL	5
1	A	46	SER	5
1	A	67	ASN	5
1	A	23	SER	5
1	A	58	THR	4
1	A	141	SER	4
1	A	142	ASP	4
1	A	115	GLU	4
1	A	117	PHE	4
1	A	32	THR	3
1	A	60	SER	3
1	A	125	TYR	3
1	A	80	GLN	3
1	A	111	ASN	3
1	A	134	GLU	3
1	A	84	LEU	3
1	A	137	THR	2
1	A	104	GLU	2
1	A	18	LYS	2

Continued on next page...

Continued from previous page...

Mol	Chain	Res	Type	Models (Total)
1	A	64	SER	2
1	A	113	ASP	1
1	A	13	GLU	1
1	A	77	SER	1
1	A	129	ASN	1
1	A	70	SER	1
1	A	25	GLU	1
1	A	107	GLU	1

6.3.3 RNA [i](#)

There are no RNA molecules in this entry.

6.4 Non-standard residues in protein, DNA, RNA chains [i](#)

There are no non-standard protein/DNA/RNA residues in this entry.

6.5 Carbohydrates [i](#)

There are no monosaccharides in this entry.

6.6 Ligand geometry [i](#)

There are no ligands in this entry.

6.7 Other polymers [i](#)

There are no such molecules in this entry.

6.8 Polymer linkage issues [i](#)

There are no chain breaks in this entry.

7 Chemical shift validation

The completeness of assignment taking into account all chemical shift lists is 86% for the well-defined parts and 85% for the entire structure.

7.1 Chemical shift list 1

File name: working_cs.cif

Chemical shift list name: *assigned_chem_shift_list_1*

7.1.1 Bookkeeping

The following table shows the results of parsing the chemical shift list and reports the number of nuclei with statistically unusual chemical shifts.

Total number of shifts	1697
Number of shifts mapped to atoms	1666
Number of unparsed shifts	0
Number of shifts with mapping errors	31
Number of shifts with mapping warnings	0
Number of shift outliers (ShiftChecker)	0

The following assigned chemical shifts were not mapped to the molecules present in the coordinate file.

- No matching atom found in the structure. All 31 occurrences are reported below.

List ID	Chain	Res	Type	Atom	Shift Data		
					Value	Uncertainty	Ambiguity
1	A	143	LEU	C	178.177	0.000	1
1	A	143	LEU	CA	56.528	0.000	1
1	A	143	LEU	CB	42.652	0.037	1
1	A	143	LEU	H	7.959	0.003	1
1	A	143	LEU	HA	4.174	0.007	1
1	A	143	LEU	HB3	1.764	0.006	2
1	A	143	LEU	HB2	1.494	0.002	2
1	A	143	LEU	N	119.913	0.051	1
1	A	144	GLU	C	176.693	0.000	1
1	A	144	GLU	CA	57.753	0.000	1
1	A	144	GLU	CB	30.425	0.000	1
1	A	144	GLU	H	8.185	0.003	1
1	A	144	GLU	HA	4.086	0.006	1
1	A	144	GLU	HB3	1.877	0.001	2

Continued on next page...

Continued from previous page...

List ID	Chain	Res	Type	Atom	Shift Data		
					Value	Uncertainty	Ambiguity
1	A	144	GLU	HB2	1.877	0.001	2
1	A	144	GLU	N	118.71	0.032	1
1	A	145	HIS	C	173.976	0.000	1
1	A	145	HIS	CA	56.467	0.196	1
1	A	145	HIS	CB	30.58	0.119	1
1	A	145	HIS	H	8.013	0.005	1
1	A	145	HIS	HA	4.542	0.003	1
1	A	145	HIS	HB3	3.061	0.000	2
1	A	145	HIS	HB2	2.994	0.003	2
1	A	145	HIS	N	118.379	0.027	1
1	A	146	HIS	CA	57.632	0.000	1
1	A	146	HIS	CB	30.819	0.000	1
1	A	146	HIS	H	7.97	0.002	1
1	A	146	HIS	HA	4.356	0.000	1
1	A	146	HIS	HB3	3.088	0.000	2
1	A	146	HIS	HB2	3.088	0.000	2
1	A	146	HIS	N	125.471	0.027	1

7.1.2 Chemical shift referencing [i](#)

The following table shows the suggested chemical shift referencing corrections.

Nucleus	# values	Correction \pm precision, ppm	Suggested action
$^{13}\text{C}_\alpha$	145	-0.31 ± 0.09	None needed (< 0.5 ppm)
$^{13}\text{C}_\beta$	139	-0.09 ± 0.07	None needed (< 0.5 ppm)
$^{13}\text{C}'$	136	-0.05 ± 0.10	None needed (< 0.5 ppm)
^{15}N	138	-0.10 ± 0.34	None needed (< 0.5 ppm)

7.1.3 Completeness of resonance assignments [i](#)

The following table shows the completeness of the chemical shift assignments for the well-defined regions of the structure. The overall completeness is 86%, i.e. 1609 atoms were assigned a chemical shift out of a possible 1879. 0 out of 24 assigned methyl groups (LEU and VAL) were assigned stereospecifically.

	Total	^1H	^{13}C	^{15}N
Backbone	662/670 (99%)	271/271 (100%)	262/270 (97%)	129/129 (100%)
Sidechain	907/1122 (81%)	666/731 (91%)	228/347 (66%)	13/44 (30%)
Aromatic	40/87 (46%)	38/42 (90%)	1/42 (2%)	1/3 (33%)
Overall	1609/1879 (86%)	975/1044 (93%)	491/659 (75%)	143/176 (81%)

The following table shows the completeness of the chemical shift assignments for the full structure. The overall completeness is 85%, i.e. 1666 atoms were assigned a chemical shift out of a possible 1950. 0 out of 24 assigned methyl groups (LEU and VAL) were assigned stereospecifically.

	Total	^1H	^{13}C	^{15}N
Backbone	691/703 (98%)	283/284 (100%)	274/284 (96%)	134/135 (99%)
Sidechain	935/1160 (81%)	686/756 (91%)	236/360 (66%)	13/44 (30%)
Aromatic	40/87 (46%)	38/42 (90%)	1/42 (2%)	1/3 (33%)
Overall	1666/1950 (85%)	1007/1082 (93%)	511/686 (74%)	148/182 (81%)

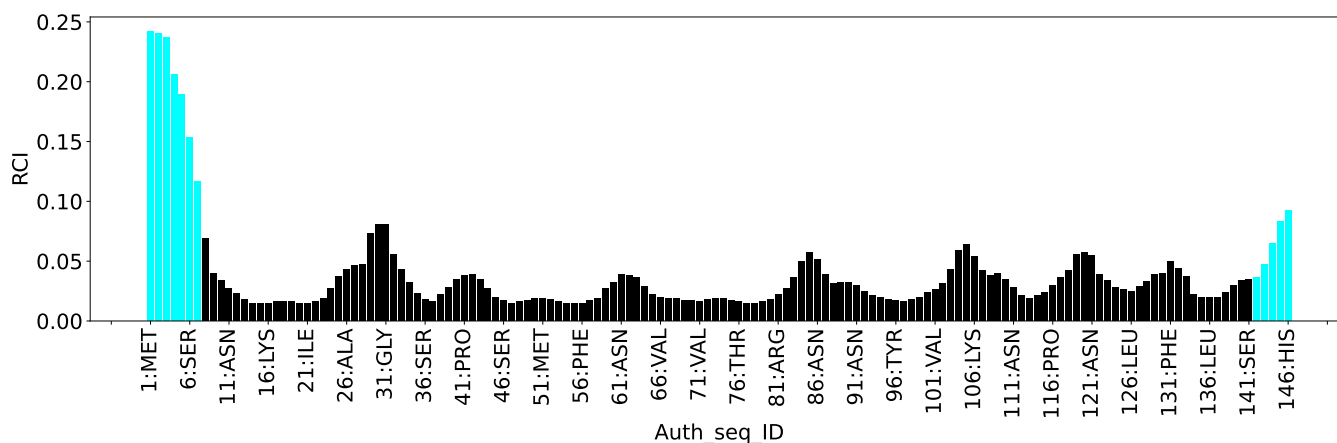
7.1.4 Statistically unusual chemical shifts [i](#)

There are no statistically unusual chemical shifts.

7.1.5 Random Coil Index (RCI) plots [i](#)

The image below reports *random coil index* values for the protein chains in the structure. The height of each bar gives a probability of a given residue to be disordered, as predicted from the available chemical shifts and the amino acid sequence. A value above 0.2 is an indication of significant predicted disorder. The colour of the bar shows whether the residue is in the well-defined core (black) or in the ill-defined residue ranges (cyan), as described in section 2 on ensemble composition. If well-defined core and ill-defined regions are not identified then it is shown as gray bars.

Random coil index (RCI) for chain A:



8 NMR restraints analysis

8.1 Conformationally restricting restraints

The following table provides the summary of experimentally observed NMR restraints in different categories. Restraints are classified into different categories based on the sequence separation of the atoms involved.

Description	Value
Total distance restraints	2669
Intra-residue ($ i-j =0$)	975
Sequential ($ i-j =1$)	639
Medium range ($ i-j >1$ and $ i-j <5$)	482
Long range ($ i-j \geq 5$)	535
Inter-chain	0
Hydrogen bond restraints	38
Disulfide bond restraints	0
Total dihedral-angle restraints	316
Number of unmapped restraints	0
Number of restraints per residue	19.9
Number of long range restraints per residue ¹	3.8

¹Long range hydrogen bonds and disulfide bonds are counted as long range restraints while calculating the number of long range restraints per residue

8.2 Residual restraint violations

This section provides the overview of the restraint violations analysis. The violations are binned as small, medium and large violations based on its absolute value. Average number of violations per model is calculated by dividing the total number of violations in each bin by the size of the ensemble.

8.2.1 Average number of distance violations per model

Distance violations less than 0.1 Å are not included in the calculation.

Bins (Å)	Average number of violations per model	Max (Å)
0.1-0.2 (Small)	0.1	0.13
0.2-0.5 (Medium)	1.6	0.5
>0.5 (Large)	4.4	2.87

8.2.2 Average number of dihedral-angle violations per model [i](#)

Dihedral-angle violations less than 1° are not included in the calculation.

Bins (°)	Average number of violations per model	Max (°)
1.0-10.0 (Small)	1.0	1.7
10.0-20.0 (Medium)	None	None
>20.0 (Large)	None	None

9 Distance violation analysis i

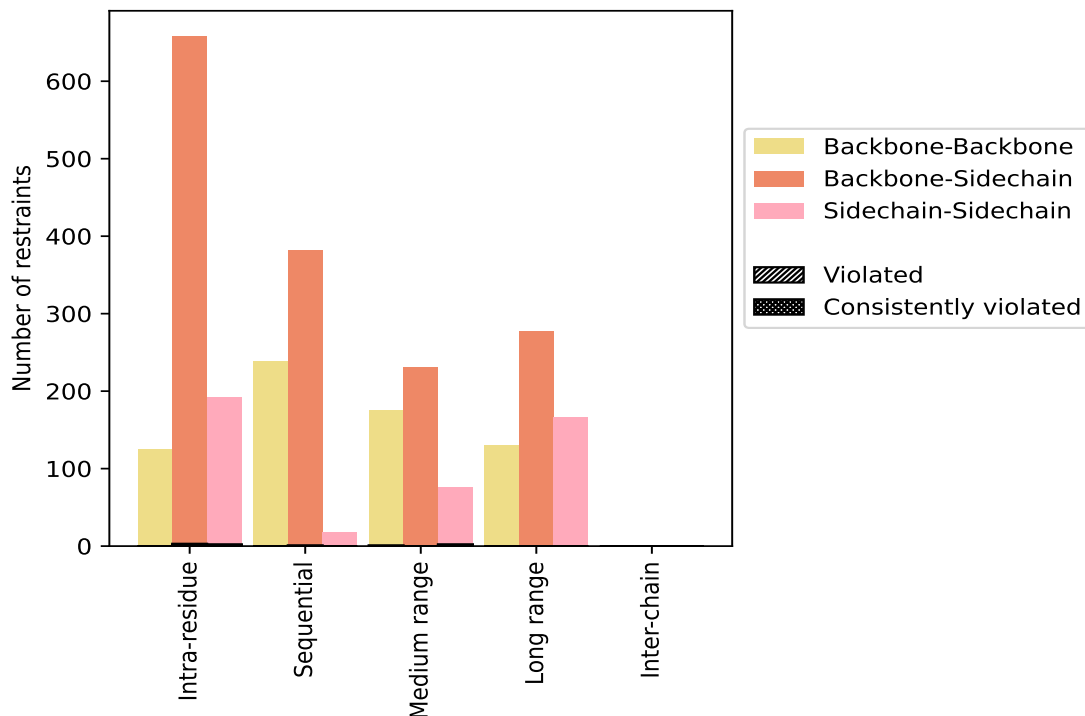
9.1 Summary of distance violations i

The following table shows the summary of distance violations in different restraint categories based on the sequence separation of the atoms involved. Each category is further sub-divided into three sub-categories based on the atoms involved. Violations less than 0.1 Å are not included in the statistics.

Restrains type	Count	% ¹	Violated ³			Consistently Violated ⁴		
			Count	% ²	% ¹	Count	% ²	% ¹
Intra-residue ($i-j =0$)	975	36.5	5	0.5	0.2	4	0.4	0.1
Backbone-Backbone	125	4.7	0	0.0	0.0	0	0.0	0.0
Backbone-Sidechain	658	24.7	3	0.5	0.1	2	0.3	0.1
Sidechain-Sidechain	192	7.2	2	1.0	0.1	2	1.0	0.1
Sequential ($i-j =1$)	639	23.9	1	0.2	0.0	0	0.0	0.0
Backbone-Backbone	239	9.0	0	0.0	0.0	0	0.0	0.0
Backbone-Sidechain	382	14.3	1	0.3	0.0	0	0.0	0.0
Sidechain-Sidechain	18	0.7	0	0.0	0.0	0	0.0	0.0
Medium range ($i-j >1$ & $i-j <5$)	482	18.1	3	0.6	0.1	2	0.4	0.1
Backbone-Backbone	175	6.6	1	0.6	0.0	0	0.0	0.0
Backbone-Sidechain	231	8.7	0	0.0	0.0	0	0.0	0.0
Sidechain-Sidechain	76	2.8	2	2.6	0.1	2	2.6	0.1
Long range ($i-j \geq 5$)	535	20.0	0	0.0	0.0	0	0.0	0.0
Backbone-Backbone	92	3.4	0	0.0	0.0	0	0.0	0.0
Backbone-Sidechain	277	10.4	0	0.0	0.0	0	0.0	0.0
Sidechain-Sidechain	166	6.2	0	0.0	0.0	0	0.0	0.0
Inter-chain	0	0.0	0	0.0	0.0	0	0.0	0.0
Backbone-Backbone	0	0.0	0	0.0	0.0	0	0.0	0.0
Backbone-Sidechain	0	0.0	0	0.0	0.0	0	0.0	0.0
Sidechain-Sidechain	0	0.0	0	0.0	0.0	0	0.0	0.0
Hydrogen bond	38	1.4	0	0.0	0.0	0	0.0	0.0
Disulfide bond	0	0.0	0	0.0	0.0	0	0.0	0.0
Total	2669	100.0	9	0.3	0.3	6	0.2	0.2
Backbone-Backbone	669	25.1	1	0.1	0.0	0	0.0	0.0
Backbone-Sidechain	1548	58.0	4	0.3	0.1	2	0.1	0.1
Sidechain-Sidechain	452	16.9	4	0.9	0.1	4	0.9	0.1

¹ percentage calculated with respect to the total number of distance restraints, ² percentage calculated with respect to the number of restraints in a particular restraint category, ³ violated in at least one model, ⁴ violated in all the models

9.1.1 Bar chart : Distribution of distance restraints and violations [i](#)



Violated and consistently violated restraints are shown using different hatch patterns in their respective categories. The hydrogen bonds and disulfid bonds are counted in their appropriate category on the x-axis

9.2 Distance violation statistics for each model [i](#)

The following table provides the distance violation statistics for each model in the ensemble. Violations less than 0.1 Å are not included in the statistics.

Model ID	Number of violations						Mean (Å)	Max (Å)	SD ⁶ (Å)	Median (Å)
	IR ¹	SQ ²	MR ³	LR ⁴	IC ⁵	Total				
1	4	0	2	0	0	6	1.3	2.81	1.03	0.91
2	4	0	2	0	0	6	1.31	2.77	1.0	0.9
3	4	0	2	0	0	6	1.31	2.71	0.98	0.91
4	4	0	2	0	0	6	1.32	2.77	0.99	0.92
5	4	0	2	0	0	6	1.32	2.84	1.02	0.92
6	4	0	2	0	0	6	1.32	2.78	1.0	0.91
7	4	0	2	0	0	6	1.32	2.8	1.01	0.9
8	4	0	2	0	0	6	1.29	2.67	0.98	0.92
9	5	1	2	0	0	8	0.99	2.7	1.0	0.5
10	4	0	2	0	0	6	1.33	2.84	1.01	0.9
11	4	0	3	0	0	7	1.16	2.85	1.04	0.65

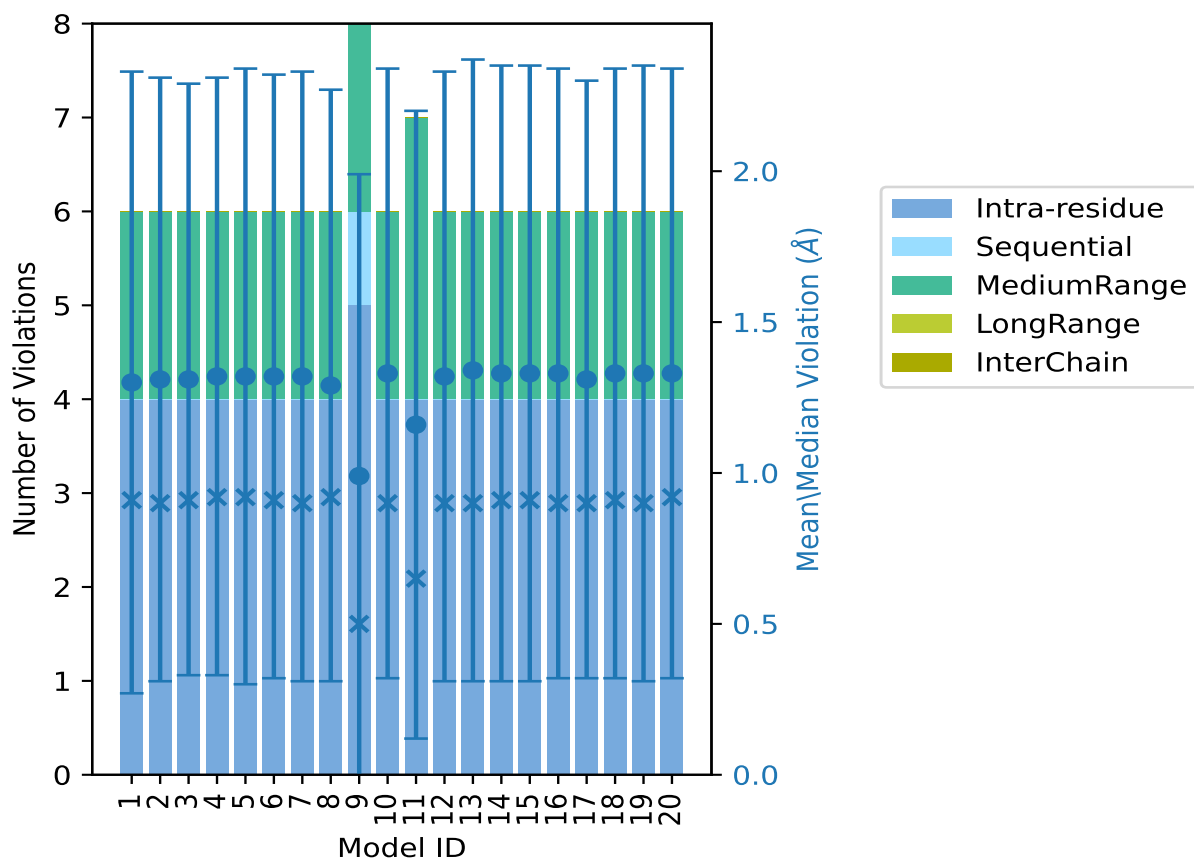
Continued on next page...

Continued from previous page...

Model ID	Number of violations					Total	Mean (Å)	Max (Å)	SD ⁶ (Å)	Median (Å)
	IR ¹	SQ ²	MR ³	LR ⁴	IC ⁵					
12	4	0	2	0	0	6	1.32	2.8	1.01	0.9
13	4	0	2	0	0	6	1.34	2.87	1.03	0.9
14	4	0	2	0	0	6	1.33	2.84	1.02	0.91
15	4	0	2	0	0	6	1.33	2.85	1.02	0.91
16	4	0	2	0	0	6	1.33	2.83	1.01	0.9
17	4	0	2	0	0	6	1.31	2.75	0.99	0.9
18	4	0	2	0	0	6	1.33	2.84	1.01	0.91
19	4	0	2	0	0	6	1.33	2.83	1.02	0.9
20	4	0	2	0	0	6	1.33	2.83	1.01	0.92

¹Intra-residue restraints, ²Sequential restraints, ³Medium range restraints, ⁴Long range restraints, ⁵Inter-chain restraints, ⁶Standard deviation

9.2.1 Bar graph : Distance Violation statistics for each model [\(i\)](#)



The mean(dot),median(x) and the standard deviation are shown in blue with respect to the y axis on the right

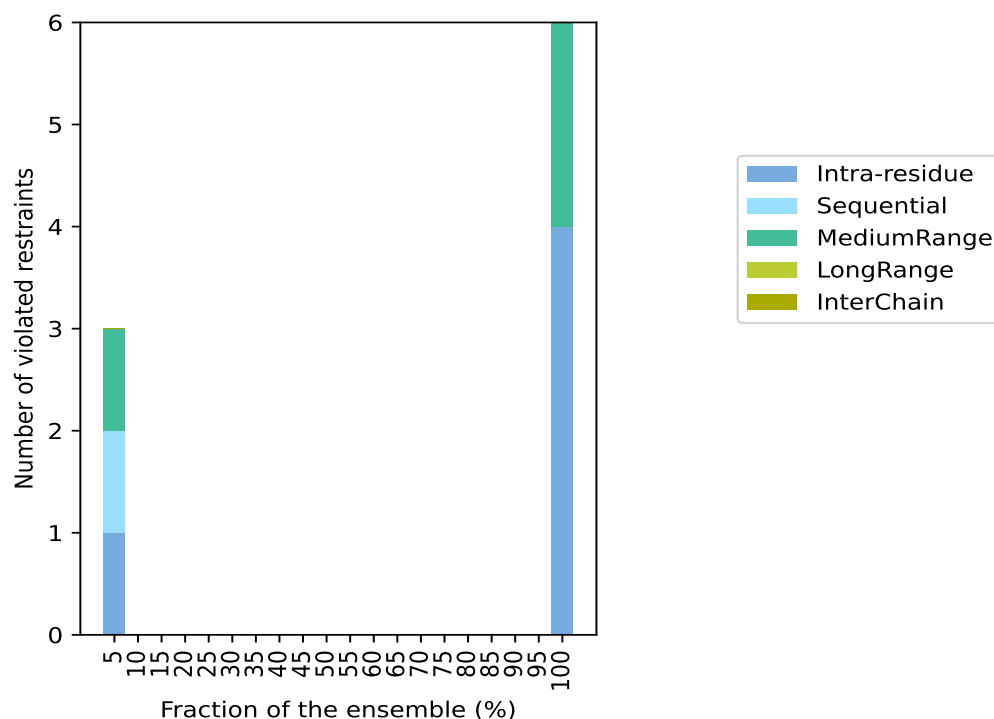
9.3 Distance violation statistics for the ensemble

Violation analysis may find that some restraints are violated in few models and some are violated in most of models. The following table provides this information as number of violated restraints for a given fraction of the ensemble. In total, 2622(IR:970, SQ:638, MR:479, LR:535, IC:0) restraints are not violated in the ensemble.

Number of violated restraints						Fraction of the ensemble	
IR ¹	SQ ²	MR ³	LR ⁴	IC ⁵	Total	Count ⁶	%
1	1	1	0	0	3	1	5.0
0	0	0	0	0	0	2	10.0
0	0	0	0	0	0	3	15.0
0	0	0	0	0	0	4	20.0
0	0	0	0	0	0	5	25.0
0	0	0	0	0	0	6	30.0
0	0	0	0	0	0	7	35.0
0	0	0	0	0	0	8	40.0
0	0	0	0	0	0	9	45.0
0	0	0	0	0	0	10	50.0
0	0	0	0	0	0	11	55.0
0	0	0	0	0	0	12	60.0
0	0	0	0	0	0	13	65.0
0	0	0	0	0	0	14	70.0
0	0	0	0	0	0	15	75.0
0	0	0	0	0	0	16	80.0
0	0	0	0	0	0	17	85.0
0	0	0	0	0	0	18	90.0
0	0	0	0	0	0	19	95.0
4	0	2	0	0	6	20	100.0

¹Intra-residue restraints, ²Sequential restraints, ³Medium range restraints, ⁴Long range restraints, ⁵Inter-chain restraints, ⁶ Number of models with violations

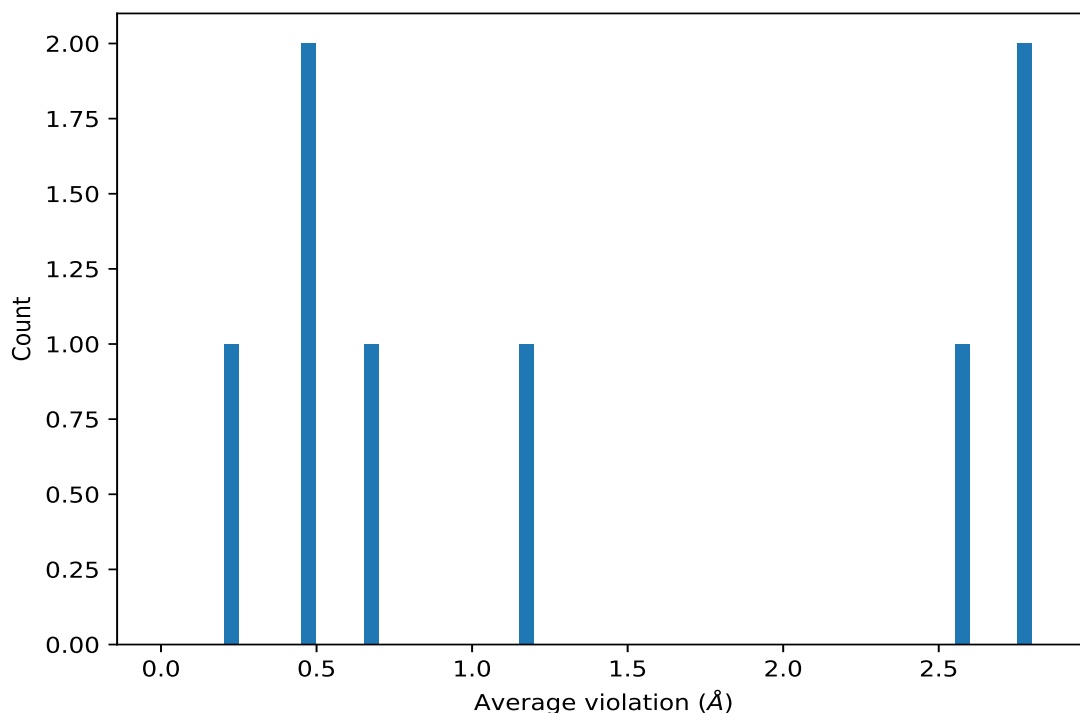
9.3.1 Bar graph : Distance violation statistics for the ensemble [i](#)



9.4 Most violated distance restraints in the ensemble [i](#)

9.4.1 Histogram : Distribution of mean distance violations [i](#)

The following histogram shows the distribution of the average value of the violation. The average is calculated for each restraint that is violated in more than one model over all the violated models in the ensemble



9.4.2 Table: Most violated distance restraints [i](#)

The following table provides the mean and the standard deviation of the violation for each restraint sorted by number of violated models and the mean value. The Key (restraint list ID, restraint ID) is the unique identifier for a given restraint. Rows with same key represent combinatorial or ambiguous restraints and are counted as a single restraint.

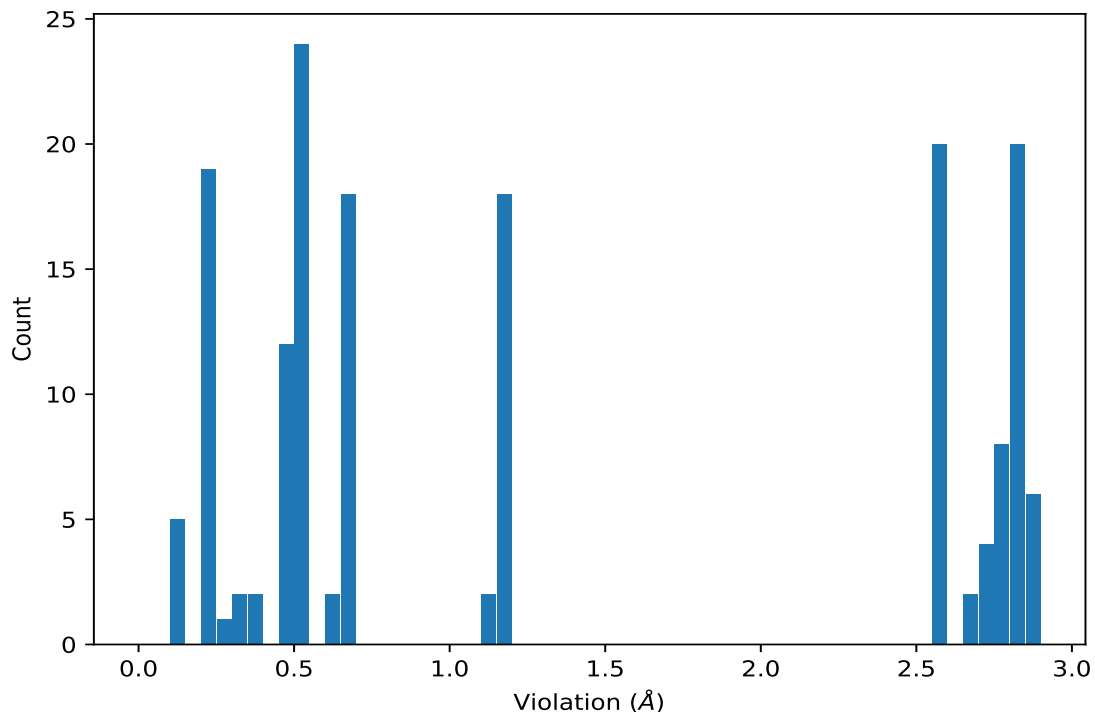
Key	Atom-1	Atom-2	Models ¹	Mean (Å)	SD ¹ (Å)	Median (Å)
(1,777)	1:A:18:LYS:HB2	1:A:15:TRP:HE1	20	2.8	0.05	2.82
(1,777)	1:A:18:LYS:HB3	1:A:15:TRP:HE1	20	2.8	0.05	2.82
(1,2027)	1:A:15:TRP:HE1	1:A:15:TRP:HA	20	2.58	0.01	2.58
(1,2024)	1:A:15:TRP:HE1	1:A:15:TRP:H	20	1.16	0.01	1.16
(1,2028)	1:A:15:TRP:HE1	1:A:15:TRP:HB2	20	0.66	0.01	0.66
(1,779)	1:A:19:LYS:HB2	1:A:15:TRP:HE1	20	0.48	0.05	0.5
(1,779)	1:A:19:LYS:HB3	1:A:15:TRP:HE1	20	0.48	0.05	0.5
(1,2021)	1:A:15:TRP:HE1	1:A:15:TRP:HB3	20	0.24	0.0	0.24

¹Number of violated models, ²Standard deviation

9.5 All violated distance restraints [i](#)

9.5.1 Histogram : Distribution of distance violations [i](#)

The following histogram shows the distribution of the absolute value of the violation for all violated restraints in the ensemble.



9.5.2 Table : All distance violations [i](#)

The following table lists the absolute value of the violation for each restraint in the ensemble sorted by its value. The Key (restraint list ID, restraint ID) is the unique identifier for a given restraint. Rows with same key represent combinatorial or ambiguous restraints and are counted as a single restraint.

Key	Atom-1	Atom-2	Model ID	Violation (Å)
(1,777)	1:A:18:LYS:HB2	1:A:15:TRP:HE1	13	2.87
(1,777)	1:A:18:LYS:HB3	1:A:15:TRP:HE1	13	2.87
(1,777)	1:A:18:LYS:HB2	1:A:15:TRP:HE1	11	2.85
(1,777)	1:A:18:LYS:HB3	1:A:15:TRP:HE1	11	2.85
(1,777)	1:A:18:LYS:HB2	1:A:15:TRP:HE1	15	2.85
(1,777)	1:A:18:LYS:HB3	1:A:15:TRP:HE1	15	2.85
(1,777)	1:A:18:LYS:HB2	1:A:15:TRP:HE1	5	2.84
(1,777)	1:A:18:LYS:HB3	1:A:15:TRP:HE1	5	2.84
(1,777)	1:A:18:LYS:HB2	1:A:15:TRP:HE1	10	2.84
(1,777)	1:A:18:LYS:HB3	1:A:15:TRP:HE1	10	2.84

Continued on next page...

Continued from previous page...

Key	Atom-1	Atom-2	Model ID	Violation (Å)
(1,777)	1:A:18:LYS:HB2	1:A:15:TRP:HE1	14	2.84
(1,777)	1:A:18:LYS:HB3	1:A:15:TRP:HE1	14	2.84
(1,777)	1:A:18:LYS:HB2	1:A:15:TRP:HE1	18	2.84
(1,777)	1:A:18:LYS:HB3	1:A:15:TRP:HE1	18	2.84
(1,777)	1:A:18:LYS:HB2	1:A:15:TRP:HE1	16	2.83
(1,777)	1:A:18:LYS:HB3	1:A:15:TRP:HE1	16	2.83
(1,777)	1:A:18:LYS:HB2	1:A:15:TRP:HE1	19	2.83
(1,777)	1:A:18:LYS:HB3	1:A:15:TRP:HE1	19	2.83
(1,777)	1:A:18:LYS:HB2	1:A:15:TRP:HE1	20	2.83
(1,777)	1:A:18:LYS:HB3	1:A:15:TRP:HE1	20	2.83
(1,777)	1:A:18:LYS:HB2	1:A:15:TRP:HE1	1	2.81
(1,777)	1:A:18:LYS:HB3	1:A:15:TRP:HE1	1	2.81
(1,777)	1:A:18:LYS:HB2	1:A:15:TRP:HE1	7	2.8
(1,777)	1:A:18:LYS:HB3	1:A:15:TRP:HE1	7	2.8
(1,777)	1:A:18:LYS:HB2	1:A:15:TRP:HE1	12	2.8
(1,777)	1:A:18:LYS:HB3	1:A:15:TRP:HE1	12	2.8
(1,777)	1:A:18:LYS:HB2	1:A:15:TRP:HE1	6	2.78
(1,777)	1:A:18:LYS:HB3	1:A:15:TRP:HE1	6	2.78
(1,777)	1:A:18:LYS:HB2	1:A:15:TRP:HE1	2	2.77
(1,777)	1:A:18:LYS:HB3	1:A:15:TRP:HE1	2	2.77
(1,777)	1:A:18:LYS:HB2	1:A:15:TRP:HE1	4	2.77
(1,777)	1:A:18:LYS:HB3	1:A:15:TRP:HE1	4	2.77
(1,777)	1:A:18:LYS:HB2	1:A:15:TRP:HE1	17	2.75
(1,777)	1:A:18:LYS:HB3	1:A:15:TRP:HE1	17	2.75
(1,777)	1:A:18:LYS:HB2	1:A:15:TRP:HE1	3	2.71
(1,777)	1:A:18:LYS:HB3	1:A:15:TRP:HE1	3	2.71
(1,777)	1:A:18:LYS:HB2	1:A:15:TRP:HE1	9	2.7
(1,777)	1:A:18:LYS:HB3	1:A:15:TRP:HE1	9	2.7
(1,777)	1:A:18:LYS:HB2	1:A:15:TRP:HE1	8	2.67
(1,777)	1:A:18:LYS:HB3	1:A:15:TRP:HE1	8	2.67
(1,2027)	1:A:15:TRP:HE1	1:A:15:TRP:HA	13	2.59
(1,2027)	1:A:15:TRP:HE1	1:A:15:TRP:HA	15	2.59
(1,2027)	1:A:15:TRP:HE1	1:A:15:TRP:HA	16	2.59
(1,2027)	1:A:15:TRP:HE1	1:A:15:TRP:HA	19	2.59
(1,2027)	1:A:15:TRP:HE1	1:A:15:TRP:HA	1	2.58
(1,2027)	1:A:15:TRP:HE1	1:A:15:TRP:HA	5	2.58
(1,2027)	1:A:15:TRP:HE1	1:A:15:TRP:HA	7	2.58
(1,2027)	1:A:15:TRP:HE1	1:A:15:TRP:HA	9	2.58
(1,2027)	1:A:15:TRP:HE1	1:A:15:TRP:HA	10	2.58
(1,2027)	1:A:15:TRP:HE1	1:A:15:TRP:HA	11	2.58
(1,2027)	1:A:15:TRP:HE1	1:A:15:TRP:HA	12	2.58
(1,2027)	1:A:15:TRP:HE1	1:A:15:TRP:HA	14	2.58

Continued on next page...

Continued from previous page...

Key	Atom-1	Atom-2	Model ID	Violation (Å)
(1,2027)	1:A:15:TRP:HE1	1:A:15:TRP:HA	18	2.58
(1,2027)	1:A:15:TRP:HE1	1:A:15:TRP:HA	20	2.58
(1,2027)	1:A:15:TRP:HE1	1:A:15:TRP:HA	2	2.57
(1,2027)	1:A:15:TRP:HE1	1:A:15:TRP:HA	3	2.57
(1,2027)	1:A:15:TRP:HE1	1:A:15:TRP:HA	4	2.57
(1,2027)	1:A:15:TRP:HE1	1:A:15:TRP:HA	6	2.57
(1,2027)	1:A:15:TRP:HE1	1:A:15:TRP:HA	8	2.57
(1,2027)	1:A:15:TRP:HE1	1:A:15:TRP:HA	17	2.57
(1,2024)	1:A:15:TRP:HE1	1:A:15:TRP:H	5	1.19
(1,2024)	1:A:15:TRP:HE1	1:A:15:TRP:H	11	1.18
(1,2024)	1:A:15:TRP:HE1	1:A:15:TRP:H	20	1.18
(1,2024)	1:A:15:TRP:HE1	1:A:15:TRP:H	1	1.17
(1,2024)	1:A:15:TRP:HE1	1:A:15:TRP:H	8	1.17
(1,2024)	1:A:15:TRP:HE1	1:A:15:TRP:H	18	1.17
(1,2024)	1:A:15:TRP:HE1	1:A:15:TRP:H	3	1.16
(1,2024)	1:A:15:TRP:HE1	1:A:15:TRP:H	4	1.16
(1,2024)	1:A:15:TRP:HE1	1:A:15:TRP:H	6	1.16
(1,2024)	1:A:15:TRP:HE1	1:A:15:TRP:H	10	1.16
(1,2024)	1:A:15:TRP:HE1	1:A:15:TRP:H	13	1.16
(1,2024)	1:A:15:TRP:HE1	1:A:15:TRP:H	14	1.16
(1,2024)	1:A:15:TRP:HE1	1:A:15:TRP:H	15	1.16
(1,2024)	1:A:15:TRP:HE1	1:A:15:TRP:H	19	1.16
(1,2024)	1:A:15:TRP:HE1	1:A:15:TRP:H	2	1.15
(1,2024)	1:A:15:TRP:HE1	1:A:15:TRP:H	12	1.15
(1,2024)	1:A:15:TRP:HE1	1:A:15:TRP:H	16	1.15
(1,2024)	1:A:15:TRP:HE1	1:A:15:TRP:H	17	1.15
(1,2024)	1:A:15:TRP:HE1	1:A:15:TRP:H	7	1.14
(1,2024)	1:A:15:TRP:HE1	1:A:15:TRP:H	9	1.13
(1,2028)	1:A:15:TRP:HE1	1:A:15:TRP:HB2	4	0.67
(1,2028)	1:A:15:TRP:HE1	1:A:15:TRP:HB2	9	0.67
(1,2028)	1:A:15:TRP:HE1	1:A:15:TRP:HB2	2	0.66
(1,2028)	1:A:15:TRP:HE1	1:A:15:TRP:HB2	3	0.66
(1,2028)	1:A:15:TRP:HE1	1:A:15:TRP:HB2	6	0.66
(1,2028)	1:A:15:TRP:HE1	1:A:15:TRP:HB2	7	0.66
(1,2028)	1:A:15:TRP:HE1	1:A:15:TRP:HB2	8	0.66
(1,2028)	1:A:15:TRP:HE1	1:A:15:TRP:HB2	12	0.66
(1,2028)	1:A:15:TRP:HE1	1:A:15:TRP:HB2	14	0.66
(1,2028)	1:A:15:TRP:HE1	1:A:15:TRP:HB2	15	0.66
(1,2028)	1:A:15:TRP:HE1	1:A:15:TRP:HB2	17	0.66
(1,2028)	1:A:15:TRP:HE1	1:A:15:TRP:HB2	1	0.65
(1,2028)	1:A:15:TRP:HE1	1:A:15:TRP:HB2	10	0.65
(1,2028)	1:A:15:TRP:HE1	1:A:15:TRP:HB2	11	0.65

Continued on next page...

Continued from previous page...

Key	Atom-1	Atom-2	Model ID	Violation (Å)
(1,2028)	1:A:15:TRP:HE1	1:A:15:TRP:HB2	13	0.65
(1,2028)	1:A:15:TRP:HE1	1:A:15:TRP:HB2	16	0.65
(1,2028)	1:A:15:TRP:HE1	1:A:15:TRP:HB2	18	0.65
(1,2028)	1:A:15:TRP:HE1	1:A:15:TRP:HB2	20	0.65
(1,2028)	1:A:15:TRP:HE1	1:A:15:TRP:HB2	5	0.64
(1,2028)	1:A:15:TRP:HE1	1:A:15:TRP:HB2	19	0.64
(1,779)	1:A:19:LYS:HB2	1:A:15:TRP:HE1	10	0.52
(1,779)	1:A:19:LYS:HB3	1:A:15:TRP:HE1	10	0.52
(1,779)	1:A:19:LYS:HB2	1:A:15:TRP:HE1	16	0.52
(1,779)	1:A:19:LYS:HB3	1:A:15:TRP:HE1	16	0.52
(1,779)	1:A:19:LYS:HB2	1:A:15:TRP:HE1	18	0.52
(1,779)	1:A:19:LYS:HB3	1:A:15:TRP:HE1	18	0.52
(1,779)	1:A:19:LYS:HB2	1:A:15:TRP:HE1	20	0.52
(1,779)	1:A:19:LYS:HB3	1:A:15:TRP:HE1	20	0.52
(1,779)	1:A:19:LYS:HB2	1:A:15:TRP:HE1	3	0.51
(1,779)	1:A:19:LYS:HB3	1:A:15:TRP:HE1	3	0.51
(1,779)	1:A:19:LYS:HB2	1:A:15:TRP:HE1	4	0.51
(1,779)	1:A:19:LYS:HB3	1:A:15:TRP:HE1	4	0.51
(1,779)	1:A:19:LYS:HB2	1:A:15:TRP:HE1	13	0.51
(1,779)	1:A:19:LYS:HB3	1:A:15:TRP:HE1	13	0.51
(1,779)	1:A:19:LYS:HB2	1:A:15:TRP:HE1	19	0.51
(1,779)	1:A:19:LYS:HB3	1:A:15:TRP:HE1	19	0.51
(1,779)	1:A:19:LYS:HB2	1:A:15:TRP:HE1	11	0.5
(1,779)	1:A:19:LYS:HB3	1:A:15:TRP:HE1	11	0.5
(1,779)	1:A:19:LYS:HB2	1:A:15:TRP:HE1	14	0.5
(1,779)	1:A:19:LYS:HB3	1:A:15:TRP:HE1	14	0.5
(1,779)	1:A:19:LYS:HB2	1:A:15:TRP:HE1	15	0.5
(1,779)	1:A:19:LYS:HB3	1:A:15:TRP:HE1	15	0.5
(1,779)	1:A:19:LYS:HB2	1:A:15:TRP:HE1	17	0.5
(1,779)	1:A:19:LYS:HB3	1:A:15:TRP:HE1	17	0.5
(1,779)	1:A:19:LYS:HB2	1:A:15:TRP:HE1	6	0.48
(1,779)	1:A:19:LYS:HB3	1:A:15:TRP:HE1	6	0.48
(1,779)	1:A:19:LYS:HB2	1:A:15:TRP:HE1	7	0.48
(1,779)	1:A:19:LYS:HB3	1:A:15:TRP:HE1	7	0.48
(1,779)	1:A:19:LYS:HB2	1:A:15:TRP:HE1	12	0.47
(1,779)	1:A:19:LYS:HB3	1:A:15:TRP:HE1	12	0.47
(1,779)	1:A:19:LYS:HB2	1:A:15:TRP:HE1	2	0.46
(1,779)	1:A:19:LYS:HB3	1:A:15:TRP:HE1	2	0.46
(1,779)	1:A:19:LYS:HB2	1:A:15:TRP:HE1	5	0.45
(1,779)	1:A:19:LYS:HB3	1:A:15:TRP:HE1	5	0.45
(1,779)	1:A:19:LYS:HB2	1:A:15:TRP:HE1	8	0.45
(1,779)	1:A:19:LYS:HB3	1:A:15:TRP:HE1	8	0.45

Continued on next page...

Continued from previous page...

Key	Atom-1	Atom-2	Model ID	Violation (Å)
(1,779)	1:A:19:LYS:HB2	1:A:15:TRP:HE1	1	0.37
(1,779)	1:A:19:LYS:HB3	1:A:15:TRP:HE1	1	0.37
(1,779)	1:A:19:LYS:HB2	1:A:15:TRP:HE1	9	0.34
(1,779)	1:A:19:LYS:HB3	1:A:15:TRP:HE1	9	0.34
(1,2021)	1:A:15:TRP:HE1	1:A:15:TRP:HB3	9	0.25
(1,2021)	1:A:15:TRP:HE1	1:A:15:TRP:HB3	1	0.24
(1,2021)	1:A:15:TRP:HE1	1:A:15:TRP:HB3	2	0.24
(1,2021)	1:A:15:TRP:HE1	1:A:15:TRP:HB3	3	0.24
(1,2021)	1:A:15:TRP:HE1	1:A:15:TRP:HB3	4	0.24
(1,2021)	1:A:15:TRP:HE1	1:A:15:TRP:HB3	5	0.24
(1,2021)	1:A:15:TRP:HE1	1:A:15:TRP:HB3	6	0.24
(1,2021)	1:A:15:TRP:HE1	1:A:15:TRP:HB3	7	0.24
(1,2021)	1:A:15:TRP:HE1	1:A:15:TRP:HB3	8	0.24
(1,2021)	1:A:15:TRP:HE1	1:A:15:TRP:HB3	10	0.24
(1,2021)	1:A:15:TRP:HE1	1:A:15:TRP:HB3	11	0.24
(1,2021)	1:A:15:TRP:HE1	1:A:15:TRP:HB3	12	0.24
(1,2021)	1:A:15:TRP:HE1	1:A:15:TRP:HB3	13	0.24
(1,2021)	1:A:15:TRP:HE1	1:A:15:TRP:HB3	14	0.24
(1,2021)	1:A:15:TRP:HE1	1:A:15:TRP:HB3	15	0.24
(1,2021)	1:A:15:TRP:HE1	1:A:15:TRP:HB3	16	0.24
(1,2021)	1:A:15:TRP:HE1	1:A:15:TRP:HB3	17	0.24
(1,2021)	1:A:15:TRP:HE1	1:A:15:TRP:HB3	18	0.24
(1,2021)	1:A:15:TRP:HE1	1:A:15:TRP:HB3	19	0.24
(1,2021)	1:A:15:TRP:HE1	1:A:15:TRP:HB3	20	0.24
(1,1213)	1:A:42:LYS:HB2	1:A:43:ASP:H	9	0.13
(1,1213)	1:A:42:LYS:HB3	1:A:43:ASP:H	9	0.13
(2,39)	1:A:126:LEU:HA	1:A:128:ASP:H	11	0.11
(1,2032)	1:A:16:LYS:HD2	1:A:16:LYS:HA	9	0.11
(1,2032)	1:A:16:LYS:HD3	1:A:16:LYS:HA	9	0.11

10 Dihedral-angle violation analysis [i](#)

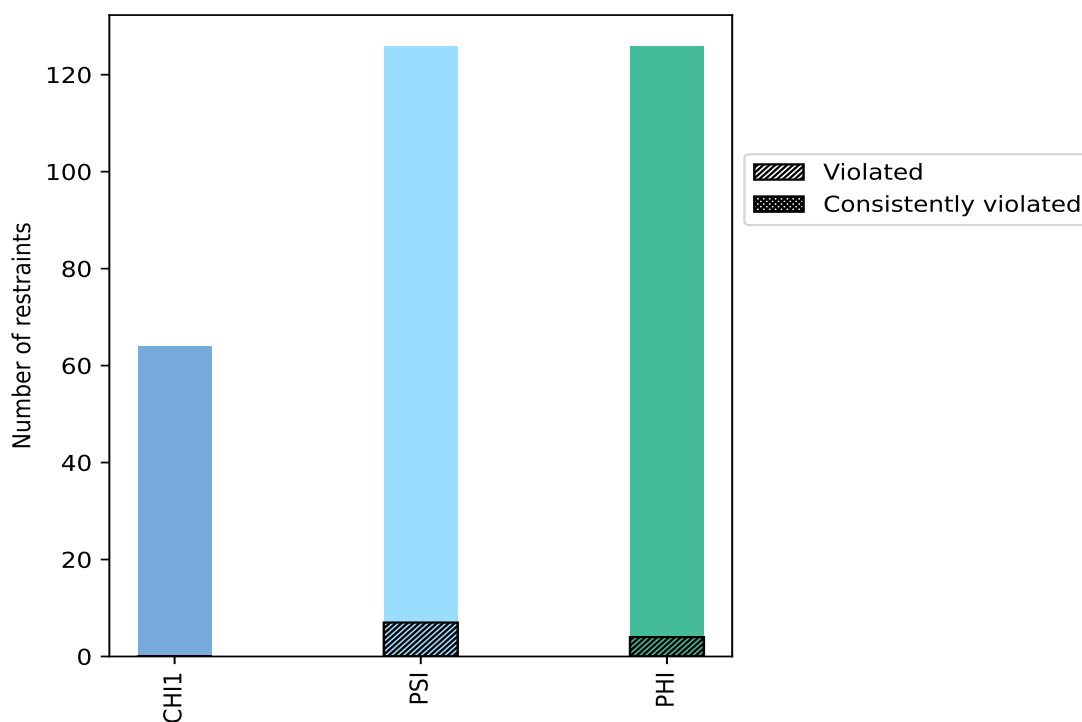
10.1 Summary of dihedral-angle violations [i](#)

The following table provides the summary of dihedral-angle violations in different dihedral-angle types. Violations less than 1° are not included in the calculation.

Angle type	Count	% ¹	Violated ³			Consistently Violated ⁴		
			Count	% ²	% ¹	Count	% ²	% ¹
CHI1	64	20.3	0	0.0	0.0	0	0.0	0.0
PSI	126	39.9	7	5.6	2.2	0	0.0	0.0
PHI	126	39.9	4	3.2	1.3	0	0.0	0.0
Total	316	100.0	11	3.5	3.5	0	0.0	0.0

¹ percentage calculated with respect to total number of dihedral-angle restraints, ² percentage calculated with respect to number of restraints in a particular dihedral-angle type, ³ violated in at least one model, ⁴ violated in all the models

10.1.1 Bar chart : Distribution of dihedral-angles and violations [i](#)



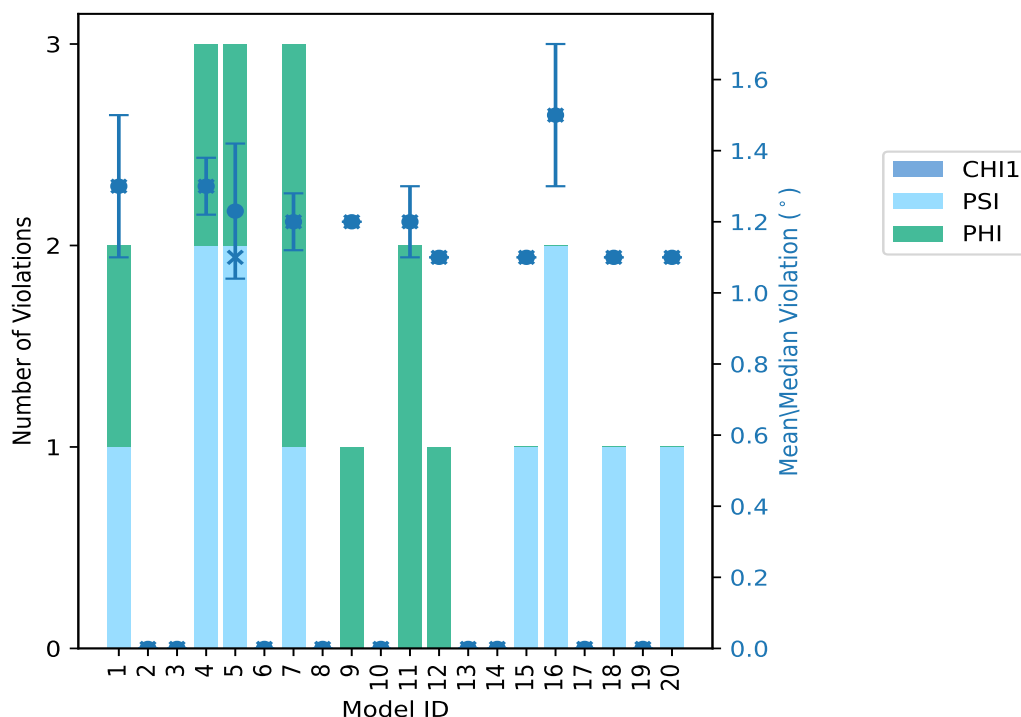
Violated and consistently violated restraints are shown using different hatch patterns in their respective categories

10.2 Dihedral-angle violation statistics for each model [i](#)

The following table provides the dihedral-angle violation statistics for each model in the ensemble. Violations less than 1° are not included in the statistics.

Model ID	Number of violations				Mean (°)	Max (°)	SD (°)	Median (°)
	CHI1	PSI	PHI	Total				
1	0	1	1	2	1.3	1.5	0.2	1.3
2	0	0	0	0	0.0	0.0	0.0	0.0
3	0	0	0	0	0.0	0.0	0.0	0.0
4	0	2	1	3	1.3	1.4	0.08	1.3
5	0	2	1	3	1.23	1.5	0.19	1.1
6	0	0	0	0	0.0	0.0	0.0	0.0
7	0	1	2	3	1.2	1.3	0.08	1.2
8	0	0	0	0	0.0	0.0	0.0	0.0
9	0	0	1	1	1.2	1.2	0.0	1.2
10	0	0	0	0	0.0	0.0	0.0	0.0
11	0	0	2	2	1.2	1.3	0.1	1.2
12	0	0	1	1	1.1	1.1	0.0	1.1
13	0	0	0	0	0.0	0.0	0.0	0.0
14	0	0	0	0	0.0	0.0	0.0	0.0
15	0	1	0	1	1.1	1.1	0.0	1.1
16	0	2	0	2	1.5	1.7	0.2	1.5
17	0	0	0	0	0.0	0.0	0.0	0.0
18	0	1	0	1	1.1	1.1	0.0	1.1
19	0	0	0	0	0.0	0.0	0.0	0.0
20	0	1	0	1	1.1	1.1	0.0	1.1

10.2.1 Bar graph : Dihedral violation statistics for each model [i](#)



The mean(dot),median(x) and the standard deviation are shown in blue with respect to the y axis on the right

10.3 Dihedral-angle violation statistics for the ensemble [i](#)

Violation analysis may find that some restraints are violated in very few models and some are violated in most of models. The following table provides this information as number of violated restraints for a given fraction of ensemble.

Number of violated restraints				Fraction of the ensemble	
CHI1	PSI	PHI	Total	Count ¹	%
0	3	1	4	1	5.0
0	4	2	6	2	10.0
0	0	0	0	3	15.0
0	0	1	1	4	20.0
0	0	0	0	5	25.0
0	0	0	0	6	30.0
0	0	0	0	7	35.0
0	0	0	0	8	40.0
0	0	0	0	9	45.0
0	0	0	0	10	50.0
0	0	0	0	11	55.0

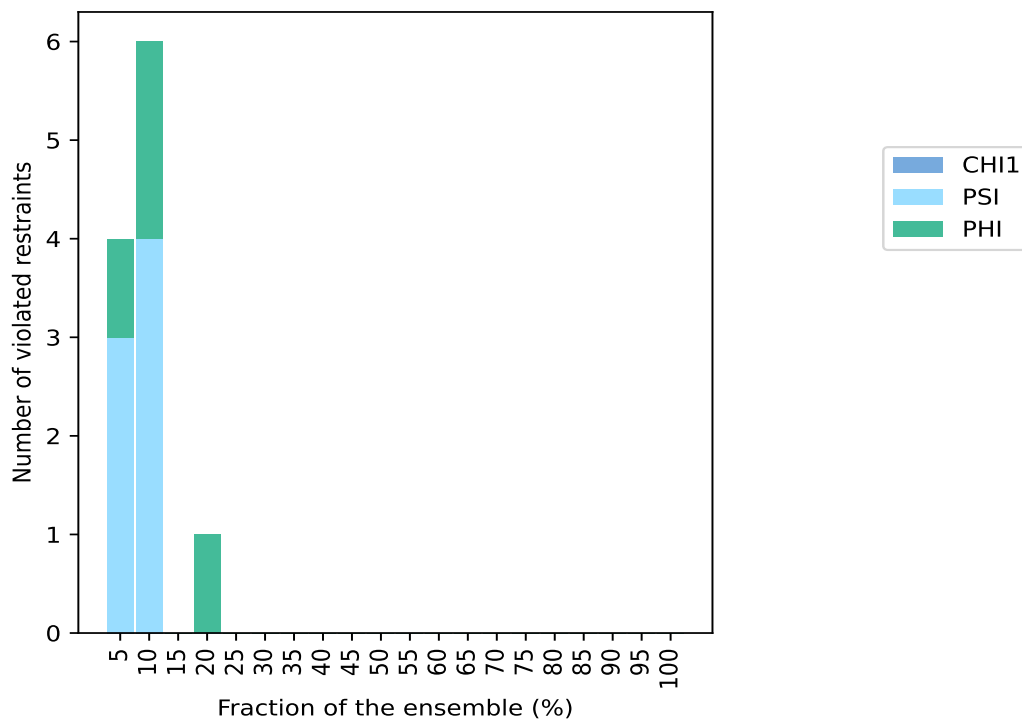
Continued on next page...

Continued from previous page...

Number of violated restraints				Fraction of the ensemble	
CHI1	PSI	PHI	Total	Count ¹	%
0	0	0	0	12	60.0
0	0	0	0	13	65.0
0	0	0	0	14	70.0
0	0	0	0	15	75.0
0	0	0	0	16	80.0
0	0	0	0	17	85.0
0	0	0	0	18	90.0
0	0	0	0	19	95.0
0	0	0	0	20	100.0

¹ Number of models with violations

10.3.1 Bar graph : Dihedral-angle Violation statistics for the ensemble [i](#)

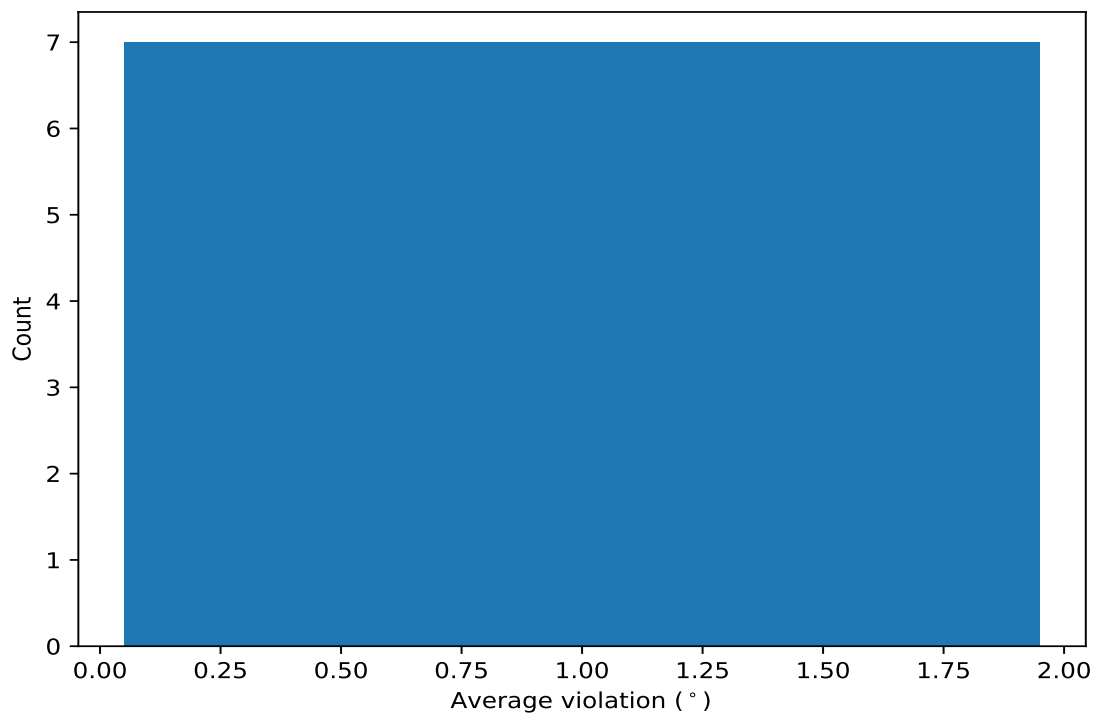


10.4 Most violated dihedral-angle restraints in the ensemble [i](#)

10.4.1 Histogram : Distribution of mean dihedral-angle violations [i](#)

The following histogram shows the distribution of the average value of the violation. The average is calculated for each restraint that is violated in more than one model over all the violated models

in the ensemble



10.4.2 Table: Most violated dihedral-angle restraints [i](#)

The following table provides the mean and the standard deviation of the violation for each restraint sorted by number of violated models and the mean value. The Key (restraint list ID, restraint ID) is the unique identifier for a given restraint.

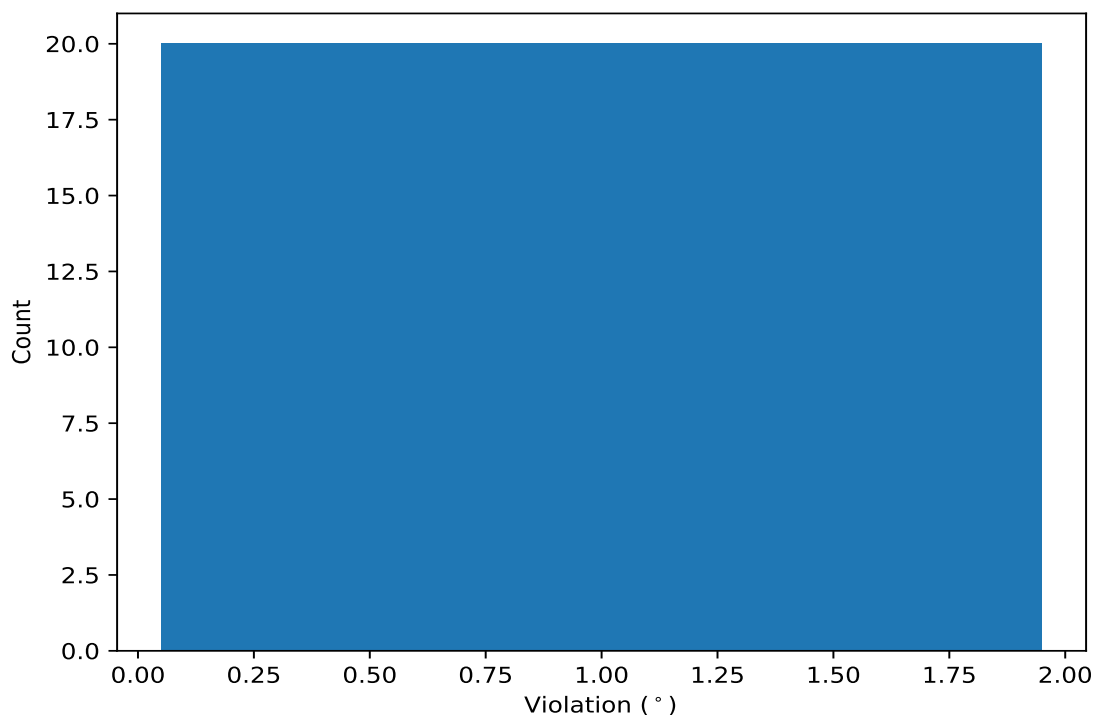
Key	Atom-1	Atom-2	Atom-3	Atom-4	Models ¹	Mean	SD ²	Median
(1,113)	1:A:124:LEU:C	1:A:125:TYR:N	1:A:125:TYR:CA	1:A:125:TYR:C	4	1.38	0.16	1.45
(1,250)	1:A:139:LEU:N	1:A:139:LEU:CA	1:A:139:LEU:C	1:A:140:LEU:N	2	1.5	0.2	1.5
(1,40)	1:A:45:ILE:C	1:A:46:SER:N	1:A:46:SER:CA	1:A:46:SER:C	2	1.3	0.0	1.3
(1,211)	1:A:94:VAL:N	1:A:94:VAL:CA	1:A:94:VAL:C	1:A:95:VAL:N	2	1.2	0.1	1.2
(1,105)	1:A:113:ASP:C	1:A:114:PHE:N	1:A:114:PHE:CA	1:A:114:PHE:C	2	1.15	0.05	1.15
(1,162)	1:A:42:LYS:N	1:A:42:LYS:CA	1:A:42:LYS:C	1:A:43:ASP:N	2	1.1	0.0	1.1
(1,234)	1:A:119:PRO:N	1:A:119:PRO:CA	1:A:119:PRO:C	1:A:120:ILE:N	2	1.1	0.0	1.1

¹ Number of violated models, ²Standard deviation, All angle values are in degree (°)

10.5 All violated dihedral-angle restraints [i](#)

10.5.1 Histogram : Distribution of violations [i](#)

The following histogram shows the distribution of the absolute value of the violation for all violated restraints in the ensemble.



10.5.2 Table: All violated dihedral-angle restraints [i](#)

The following table lists the absolute value of the violation for each restraint in the ensemble sorted by its value. The Key (restraint list ID, restraint ID) is the unique identifier for a given restraint.

Key	Atom-1	Atom-2	Atom-3	Atom-4	Model ID	Violation (°)
(1,250)	1:A:139:LEU:N	1:A:139:LEU:CA	1:A:139:LEU:C	1:A:140:LEU:N	16	1.7
(1,113)	1:A:124:LEU:C	1:A:125:TYR:N	1:A:125:TYR:CA	1:A:125:TYR:C	1	1.5
(1,113)	1:A:124:LEU:C	1:A:125:TYR:N	1:A:125:TYR:CA	1:A:125:TYR:C	5	1.5
(1,113)	1:A:124:LEU:C	1:A:125:TYR:N	1:A:125:TYR:CA	1:A:125:TYR:C	4	1.4
(1,40)	1:A:45:ILE:C	1:A:46:SER:N	1:A:46:SER:CA	1:A:46:SER:C	7	1.3
(1,40)	1:A:45:ILE:C	1:A:46:SER:N	1:A:46:SER:CA	1:A:46:SER:C	11	1.3
(1,250)	1:A:139:LEU:N	1:A:139:LEU:CA	1:A:139:LEU:C	1:A:140:LEU:N	4	1.3
(1,211)	1:A:94:VAL:N	1:A:94:VAL:CA	1:A:94:VAL:C	1:A:95:VAL:N	16	1.3
(1,238)	1:A:124:LEU:N	1:A:124:LEU:CA	1:A:124:LEU:C	1:A:125:TYR:N	4	1.2
(1,110)	1:A:121:ASN:C	1:A:122:THR:N	1:A:122:THR:CA	1:A:122:THR:C	7	1.2
(1,105)	1:A:113:ASP:C	1:A:114:PHE:N	1:A:114:PHE:CA	1:A:114:PHE:C	9	1.2
(1,240)	1:A:126:LEU:N	1:A:126:LEU:CA	1:A:126:LEU:C	1:A:127:CYS:N	5	1.1
(1,234)	1:A:119:PRO:N	1:A:119:PRO:CA	1:A:119:PRO:C	1:A:120:ILE:N	15	1.1
(1,234)	1:A:119:PRO:N	1:A:119:PRO:CA	1:A:119:PRO:C	1:A:120:ILE:N	18	1.1
(1,211)	1:A:94:VAL:N	1:A:94:VAL:CA	1:A:94:VAL:C	1:A:95:VAL:N	5	1.1
(1,162)	1:A:42:LYS:N	1:A:42:LYS:CA	1:A:42:LYS:C	1:A:43:ASP:N	7	1.1
(1,162)	1:A:42:LYS:N	1:A:42:LYS:CA	1:A:42:LYS:C	1:A:43:ASP:N	20	1.1
(1,153)	1:A:31:GLY:N	1:A:31:GLY:CA	1:A:31:GLY:C	1:A:32:THR:N	1	1.1
(1,113)	1:A:124:LEU:C	1:A:125:TYR:N	1:A:125:TYR:CA	1:A:125:TYR:C	11	1.1
(1,105)	1:A:113:ASP:C	1:A:114:PHE:N	1:A:114:PHE:CA	1:A:114:PHE:C	12	1.1