



# Full wwPDB X-ray Structure Validation Report ⓘ

Oct 17, 2021 – 03:57 AM EDT

PDB ID : 1LRL  
Title : Crystal Structure of UDP-Galactose 4-Epimerase Mutant Y299C Complexed with UDP-Glucose  
Authors : Thoden, J.B.; Henderson, J.M.; Fridovich-Keil, J.L.; Holden, H.M.  
Deposited on : 2002-05-15  
Resolution : 1.80 Å(reported)

This is a Full wwPDB X-ray Structure Validation Report for a publicly released PDB entry.

We welcome your comments at [validation@mail.wwpdb.org](mailto:validation@mail.wwpdb.org)

A user guide is available at

<https://www.wwpdb.org/validation/2017/XrayValidationReportHelp>

with specific help available everywhere you see the ⓘ symbol.

---

The following versions of software and data (see [references ⓘ](#)) were used in the production of this report:

MolProbity : 4.02b-467  
Mogul : 1.8.5 (274361), CSD as541be (2020)  
Xtrriage (Phenix) : 1.13  
EDS : 2.23.2  
buster-report : 1.1.7 (2018)  
Percentile statistics : 20191225.v01 (using entries in the PDB archive December 25th 2019)  
Refmac : 5.8.0158  
CCP4 : 7.0.044 (Gargrove)  
Ideal geometry (proteins) : Engh & Huber (2001)  
Ideal geometry (DNA, RNA) : Parkinson et al. (1996)  
Validation Pipeline (wwPDB-VP) : 2.23.2

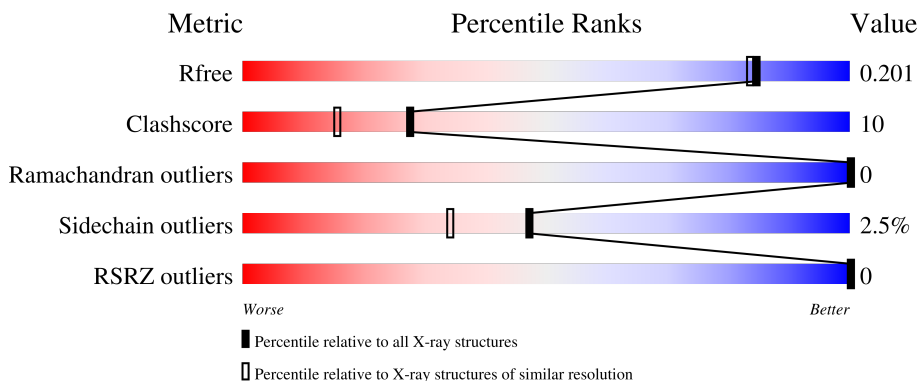
# 1 Overall quality at a glance

The following experimental techniques were used to determine the structure:

*X-RAY DIFFRACTION*

The reported resolution of this entry is 1.80 Å.

Percentile scores (ranging between 0-100) for global validation metrics of the entry are shown in the following graphic. The table shows the number of entries on which the scores are based.



Metric	Whole archive (#Entries)	Similar resolution (#Entries, resolution range(Å))
$R_{free}$	130704	5950 (1.80-1.80)
Clashscore	141614	6793 (1.80-1.80)
Ramachandran outliers	138981	6697 (1.80-1.80)
Sidechain outliers	138945	6696 (1.80-1.80)
RSRZ outliers	127900	5850 (1.80-1.80)

The table below summarises the geometric issues observed across the polymeric chains and their fit to the electron density. The red, orange, yellow and green segments of the lower bar indicate the fraction of residues that contain outliers for  $\geq 3$ , 2, 1 and 0 types of geometric quality criteria respectively. A grey segment represents the fraction of residues that are not modelled. The numeric value for each fraction is indicated below the corresponding segment, with a dot representing fractions  $\leq 5\%$ . The upper red bar (where present) indicates the fraction of residues that have poor fit to the electron density. The numeric value is given above the bar.

Mol	Chain	Length	Quality of chain
1	A	338	69% 28% .

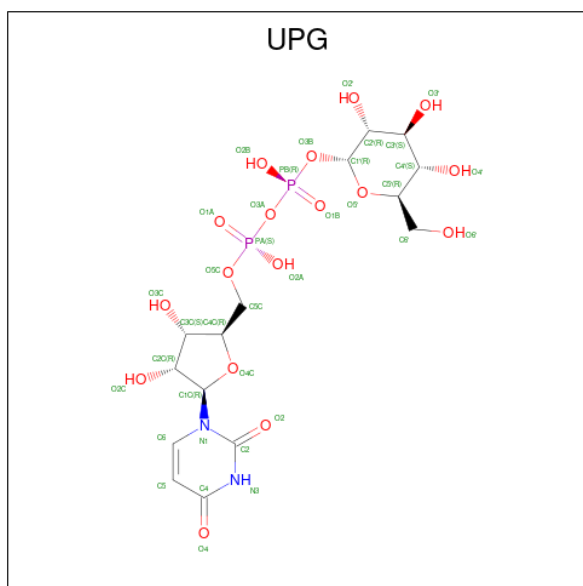
The following table lists non-polymeric compounds, carbohydrate monomers and non-standard residues in protein, DNA, RNA chains that are outliers for geometric or electron-density-fit criteria:

Mol	Type	Chain	Res	Chirality	Geometry	Clashes	Electron density
5	PGE	A	530	-	-	X	-



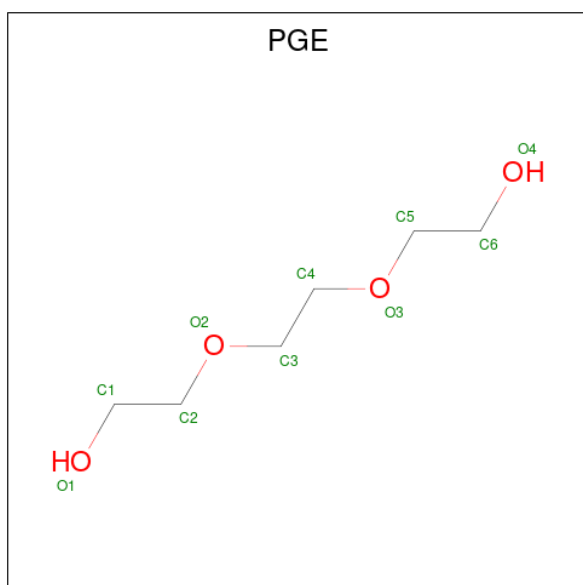
Mol	Chain	Residues	Atoms				ZeroOcc	AltConf	
			Total	C	N	O			P
3	A	1	44	21	7	14	2	0	0

- Molecule 4 is URIDINE-5'-DIPHOSPHATE-GLUCOSE (three-letter code: UPG) (formula:  $C_{15}H_{24}N_2O_{17}P_2$ ).



Mol	Chain	Residues	Atoms				ZeroOcc	AltConf	
			Total	C	N	O			P
4	A	1	36	15	2	17	2	36	0

- Molecule 5 is TRIETHYLENE GLYCOL (three-letter code: PGE) (formula:  $C_6H_{14}O_4$ ).



Mol	Chain	Residues	Atoms			ZeroOcc	AltConf
5	A	1	Total	C	O	0	0
			10	6	4		

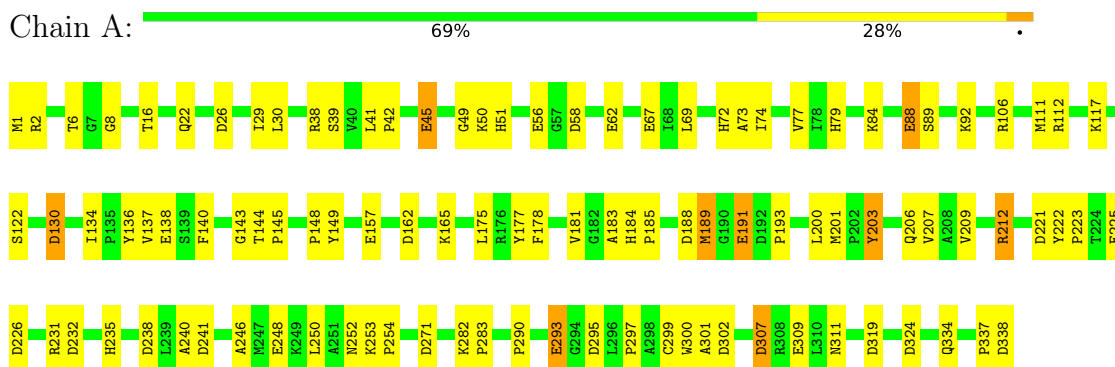
- Molecule 6 is water.

Mol	Chain	Residues	Atoms		ZeroOcc	AltConf
6	A	392	Total	O	0	0
			392	392		

### 3 Residue-property plots [i](#)

These plots are drawn for all protein, RNA, DNA and oligosaccharide chains in the entry. The first graphic for a chain summarises the proportions of the various outlier classes displayed in the second graphic. The second graphic shows the sequence view annotated by issues in geometry and electron density. Residues are color-coded according to the number of geometric quality criteria for which they contain at least one outlier: green = 0, yellow = 1, orange = 2 and red = 3 or more. A red dot above a residue indicates a poor fit to the electron density ( $RSRZ > 2$ ). Stretches of 2 or more consecutive residues without any outlier are shown as a green connector. Residues present in the sample, but not in the model, are shown in grey.

- Molecule 1: UDP-glucose 4-epimerase



## 4 Data and refinement statistics

Property	Value	Source
Space group	P 32 2 1	Depositor
Cell constants a, b, c, $\alpha$ , $\beta$ , $\gamma$	83.20Å 83.20Å 109.50Å 90.00° 90.00° 120.00°	Depositor
Resolution (Å)	30.00 – 1.80 27.44 – 1.80	Depositor EDS
% Data completeness (in resolution range)	93.1 (30.00-1.80) 95.7 (27.44-1.80)	Depositor EDS
$R_{merge}$	(Not available)	Depositor
$R_{sym}$	0.05	Depositor
$\langle I/\sigma(I) \rangle$ <sup>1</sup>	1.84 (at 1.80Å)	Xtrriage
Refinement program	TNT 5F	Depositor
R, $R_{free}$	0.194 , 0.261 0.196 , 0.201	Depositor DCC
$R_{free}$ test set	3961 reflections (10.05%)	wwPDB-VP
Wilson B-factor (Å <sup>2</sup> )	21.1	Xtrriage
Anisotropy	0.061	Xtrriage
Bulk solvent $k_{sol}$ (e/Å <sup>3</sup> ), $B_{sol}$ (Å <sup>2</sup> )	0.32 , 105.6	EDS
L-test for twinning <sup>2</sup>	$\langle  L  \rangle = 0.50$ , $\langle L^2 \rangle = 0.33$	Xtrriage
Estimated twinning fraction	0.026 for -h,-k,l	Xtrriage
$F_o, F_c$ correlation	0.96	EDS
Total number of atoms	3112	wwPDB-VP
Average B, all atoms (Å <sup>2</sup> )	32.0	wwPDB-VP

Xtrriage's analysis on translational NCS is as follows: *The largest off-origin peak in the Patterson function is 5.01% of the height of the origin peak. No significant pseudotranslation is detected.*

<sup>1</sup>Intensities estimated from amplitudes.

<sup>2</sup>Theoretical values of  $\langle |L| \rangle$ ,  $\langle L^2 \rangle$  for acentric reflections are 0.5, 0.333 respectively for untwinned datasets, and 0.375, 0.2 for perfectly twinned datasets.

## 5 Model quality [i](#)

### 5.1 Standard geometry [i](#)

Bond lengths and bond angles in the following residue types are not validated in this section: PGE, UPG, NA, NAD

The Z score for a bond length (or angle) is the number of standard deviations the observed value is removed from the expected value. A bond length (or angle) with  $|Z| > 5$  is considered an outlier worth inspection. RMSZ is the root-mean-square of all Z scores of the bond lengths (or angles).

Mol	Chain	Bond lengths		Bond angles	
		RMSZ	# Z  >5	RMSZ	# Z  >5
1	A	1.03	12/2705 (0.4%)	1.43	43/3684 (1.2%)

All (12) bond length outliers are listed below:

Mol	Chain	Res	Type	Atoms	Z	Observed(Å)	Ideal(Å)
1	A	309	GLU	CD-OE2	7.70	1.34	1.25
1	A	157	GLU	CD-OE2	7.54	1.33	1.25
1	A	191	GLU	CD-OE2	7.27	1.33	1.25
1	A	248	GLU	CD-OE2	6.83	1.33	1.25
1	A	45	GLU	CD-OE1	-6.75	1.18	1.25
1	A	62	GLU	CD-OE2	6.44	1.32	1.25
1	A	225	GLU	CD-OE2	6.34	1.32	1.25
1	A	67	GLU	CD-OE2	6.32	1.32	1.25
1	A	138	GLU	CD-OE2	6.26	1.32	1.25
1	A	293	GLU	CD-OE2	6.18	1.32	1.25
1	A	88	GLU	CD-OE2	5.62	1.31	1.25
1	A	56	GLU	CD-OE2	5.49	1.31	1.25

All (43) bond angle outliers are listed below:

Mol	Chain	Res	Type	Atoms	Z	Observed(°)	Ideal(°)
1	A	299	CYS	N-CA-CB	-8.77	94.81	110.60
1	A	162	ASP	CB-CG-OD2	-8.55	110.60	118.30
1	A	319	ASP	CB-CG-OD1	8.45	125.91	118.30
1	A	106	ARG	NE-CZ-NH1	8.35	124.47	120.30
1	A	319	ASP	CB-CG-OD2	-7.86	111.22	118.30
1	A	232	ASP	CB-CG-OD2	-7.76	111.31	118.30
1	A	324	ASP	CB-CG-OD1	7.68	125.21	118.30
1	A	130	ASP	CB-CG-OD2	-7.16	111.86	118.30
1	A	226	ASP	CB-CG-OD2	-7.09	111.92	118.30

*Continued on next page...*



Continued from previous page...

Mol	Chain	Res	Type	Atoms	Z	Observed(°)	Ideal(°)
1	A	112	ARG	NE-CZ-NH1	7.06	123.83	120.30
1	A	26	ASP	CB-CG-OD2	-6.93	112.06	118.30
1	A	130	ASP	CB-CG-OD1	6.91	124.52	118.30
1	A	232	ASP	CB-CG-OD1	6.76	124.39	118.30
1	A	324	ASP	CB-CG-OD2	-6.74	112.24	118.30
1	A	231	ARG	NE-CZ-NH1	6.61	123.61	120.30
1	A	58	ASP	CB-CG-OD2	-6.61	112.35	118.30
1	A	112	ARG	NE-CZ-NH2	-6.58	117.01	120.30
1	A	188	ASP	CB-CG-OD1	6.57	124.22	118.30
1	A	295	ASP	CB-CG-OD2	-6.53	112.42	118.30
1	A	226	ASP	CB-CG-OD1	6.44	124.09	118.30
1	A	162	ASP	CB-CG-OD1	6.30	123.97	118.30
1	A	2	ARG	NE-CZ-NH2	-5.90	117.35	120.30
1	A	338	ASP	CB-CG-OD1	5.69	123.42	118.30
1	A	177	TYR	CB-CG-CD2	-5.65	117.61	121.00
1	A	238	ASP	CB-CG-OD1	5.63	123.36	118.30
1	A	58	ASP	CB-CG-OD1	5.59	123.33	118.30
1	A	295	ASP	CB-CG-OD1	5.55	123.30	118.30
1	A	290	PRO	N-CA-CB	5.54	109.95	103.30
1	A	2	ARG	NE-CZ-NH1	5.51	123.05	120.30
1	A	241	ASP	CB-CG-OD1	5.49	123.24	118.30
1	A	212	ARG	NE-CZ-NH1	5.48	123.04	120.30
1	A	77	VAL	CB-CA-C	-5.44	101.06	111.40
1	A	26	ASP	CB-CG-OD1	5.40	123.16	118.30
1	A	221	ASP	CB-CG-OD2	-5.40	113.44	118.30
1	A	203	TYR	CB-CG-CD2	5.40	124.24	121.00
1	A	271	ASP	CB-CG-OD2	-5.37	113.47	118.30
1	A	188	ASP	CB-CG-OD2	-5.36	113.48	118.30
1	A	189	MET	N-CA-CB	5.33	120.20	110.60
1	A	231	ARG	NE-CZ-NH2	-5.23	117.69	120.30
1	A	307	ASP	CB-CG-OD1	5.17	122.96	118.30
1	A	338	ASP	CB-CG-OD2	-5.12	113.69	118.30
1	A	106	ARG	NE-CZ-NH2	-5.07	117.77	120.30
1	A	175	LEU	CB-CG-CD1	-5.02	102.46	111.00

There are no chirality outliers.

There are no planarity outliers.

## 5.2 Too-close contacts

In the following table, the Non-H and H(model) columns list the number of non-hydrogen atoms and hydrogen atoms in the chain respectively. The H(added) column lists the number of hydrogen

atoms added and optimized by MolProbity. The Clashes column lists the number of clashes within the asymmetric unit, whereas Symm-Clashes lists symmetry-related clashes.

Mol	Chain	Non-H	H(model)	H(added)	Clashes	Symm-Clashes
1	A	2628	0	2564	53	0
2	A	2	0	0	0	0
3	A	44	0	26	0	0
4	A	36	0	22	0	0
5	A	10	0	14	7	0
6	A	392	0	0	5	1
All	All	3112	0	2626	53	1

The all-atom clashscore is defined as the number of clashes found per 1000 atoms (including hydrogen atoms). The all-atom clashscore for this structure is 10.

All (53) close contacts within the same asymmetric unit are listed below, sorted by their clash magnitude.

Atom-1	Atom-2	Interatomic distance (Å)	Clash overlap (Å)
1:A:206:GLN:O	1:A:209:VAL:HG12	1.81	0.80
1:A:253:LYS:HD2	5:A:530:PGE:H52	1.72	0.72
1:A:223:PRO:HD2	1:A:297:PRO:HB3	1.77	0.66
1:A:45:GLU:OE1	1:A:51:HIS:HB2	1.94	0.65
1:A:8:GLY:HA3	1:A:29:ILE:HG23	1.83	0.61
1:A:184:HIS:CG	1:A:185:PRO:HD2	2.37	0.60
1:A:222:TYR:HB3	1:A:223:PRO:HD2	1.84	0.58
1:A:88:GLU:HG3	1:A:92:LYS:HD2	1.85	0.58
1:A:137[B]:VAL:HG22	1:A:140:PHE:CE1	2.39	0.58
1:A:253:LYS:HZ3	5:A:530:PGE:C1	2.17	0.57
1:A:307:ASP:O	1:A:311:ASN:HA	2.06	0.56
1:A:165:LYS:HB2	6:A:363:HOH:O	2.07	0.54
1:A:183:ALA:HB1	1:A:189:MET:O	2.07	0.54
1:A:137[A]:VAL:HG13	6:A:582:HOH:O	2.08	0.53
1:A:206:GLN:HA	1:A:209:VAL:HG12	1.90	0.53
1:A:207:VAL:HG13	6:A:458:HOH:O	2.08	0.53
1:A:253:LYS:NZ	5:A:530:PGE:O1	2.30	0.52
1:A:203:TYR:CZ	1:A:212:ARG:HD3	2.45	0.52
1:A:282:LYS:HB2	1:A:283:PRO:HD2	1.92	0.51
1:A:84:LYS:HA	1:A:149:TYR:CE2	2.46	0.50
1:A:253:LYS:NZ	5:A:530:PGE:C1	2.74	0.50
1:A:253:LYS:HZ2	5:A:530:PGE:H32	1.76	0.50
1:A:143:GLY:O	1:A:145:PRO:HD3	2.13	0.49
1:A:41:LEU:N	1:A:42:PRO:HD2	2.29	0.48
1:A:136:TYR:HA	1:A:140:PHE:CE2	2.50	0.47

*Continued on next page...*

Continued from previous page...

Atom-1	Atom-2	Interatomic distance (Å)	Clash overlap (Å)
1:A:72:HIS:HB2	1:A:74:ILE:HD11	1.96	0.47
1:A:72:HIS:O	1:A:73:ALA:HB3	2.14	0.47
1:A:134:ILE:HD12	1:A:300:TRP:CZ3	2.51	0.46
1:A:22:GLN:NE2	6:A:468:HOH:O	2.49	0.46
1:A:253:LYS:NZ	5:A:530:PGE:H5	2.32	0.45
1:A:30:LEU:C	1:A:30:LEU:HD13	2.37	0.45
1:A:206:GLN:C	1:A:209:VAL:HG12	2.37	0.45
1:A:200:LEU:O	1:A:201:MET:C	2.55	0.44
1:A:51:HIS:HB3	6:A:489:HOH:O	2.17	0.44
1:A:69:LEU:HD13	1:A:111:MET:HA	2.00	0.44
1:A:49:GLY:O	1:A:50:LYS:HB2	2.18	0.43
1:A:246:ALA:O	1:A:250:LEU:HB2	2.17	0.43
1:A:134:ILE:HG22	1:A:136:TYR:CE1	2.54	0.43
1:A:222:TYR:CB	1:A:223:PRO:CD	2.95	0.43
1:A:253:LYS:NZ	5:A:530:PGE:C2	2.82	0.42
1:A:89:SER:O	1:A:148:PRO:HG2	2.19	0.42
1:A:252:ASN:O	1:A:254:PRO:HD3	2.19	0.42
1:A:206:GLN:HA	1:A:209:VAL:CG1	2.50	0.42
1:A:222:TYR:HB3	1:A:223:PRO:CD	2.48	0.42
1:A:39:SER:OG	1:A:337:PRO:HD2	2.19	0.42
1:A:222:TYR:CB	1:A:223:PRO:HD2	2.48	0.41
1:A:178:PHE:HE1	1:A:301:ALA:HB2	1.85	0.41
1:A:6:THR:OG1	1:A:79:HIS:HA	2.21	0.40
1:A:16:THR:HA	1:A:240:ALA:HB1	2.03	0.40
1:A:191:GLU:C	1:A:193:PRO:HD3	2.42	0.40
1:A:137[B]:VAL:HG12	1:A:302:ASP:HB3	2.03	0.40
1:A:181:VAL:O	1:A:235:HIS:HA	2.21	0.40

All (1) symmetry-related close contacts are listed below. The label for Atom-2 includes the symmetry operator and encoded unit-cell translations to be applied.

Atom-1	Atom-2	Interatomic distance (Å)	Clash overlap (Å)
6:A:421:HOH:O	6:A:421:HOH:O[5_555]	1.88	0.32

## 5.3 Torsion angles [i](#)

### 5.3.1 Protein backbone [i](#)

In the following table, the Percentiles column shows the percent Ramachandran outliers of the chain as a percentile score with respect to all X-ray entries followed by that with respect to entries

of similar resolution.

The Analysed column shows the number of residues for which the backbone conformation was analysed, and the total number of residues.

Mol	Chain	Analysed	Favoured	Allowed	Outliers	Percentiles
1	A	339/338 (100%)	330 (97%)	9 (3%)	0	100 100

There are no Ramachandran outliers to report.

### 5.3.2 Protein sidechains [i](#)

In the following table, the Percentiles column shows the percent sidechain outliers of the chain as a percentile score with respect to all X-ray entries followed by that with respect to entries of similar resolution.

The Analysed column shows the number of residues for which the sidechain conformation was analysed, and the total number of residues.

Mol	Chain	Analysed	Rotameric	Outliers	Percentiles
1	A	285/282 (101%)	278 (98%)	7 (2%)	47 34

All (7) residues with a non-rotameric sidechain are listed below:

Mol	Chain	Res	Type
1	A	1	MET
1	A	38	ARG
1	A	117	LYS
1	A	122	SER
1	A	130	ASP
1	A	293	GLU
1	A	334	GLN

Sometimes sidechains can be flipped to improve hydrogen bonding and reduce clashes. All (2) such sidechains are listed below:

Mol	Chain	Res	Type
1	A	158	GLN
1	A	274	ASN

### 5.3.3 RNA [i](#)

There are no RNA molecules in this entry.

## 5.4 Non-standard residues in protein, DNA, RNA chains [i](#)

There are no non-standard protein/DNA/RNA residues in this entry.

## 5.5 Carbohydrates [i](#)

There are no monosaccharides in this entry.

## 5.6 Ligand geometry [i](#)

Of 5 ligands modelled in this entry, 2 are monoatomic - leaving 3 for Mogul analysis.

In the following table, the Counts columns list the number of bonds (or angles) for which Mogul statistics could be retrieved, the number of bonds (or angles) that are observed in the model and the number of bonds (or angles) that are defined in the Chemical Component Dictionary. The Link column lists molecule types, if any, to which the group is linked. The Z score for a bond length (or angle) is the number of standard deviations the observed value is removed from the expected value. A bond length (or angle) with  $|Z| > 2$  is considered an outlier worth inspection. RMSZ is the root-mean-square of all Z scores of the bond lengths (or angles).

Mol	Type	Chain	Res	Link	Bond lengths			Bond angles		
					Counts	RMSZ	# Z  > 2	Counts	RMSZ	# Z  > 2
5	PGE	A	530	-	9,9,9	0.33	0	8,8,8	1.57	2 (25%)
3	NAD	A	340	-	42,48,48	2.15	7 (16%)	50,73,73	1.85	6 (12%)
4	UPG	A	341	-	31,38,38	1.94	9 (29%)	41,58,58	1.67	9 (21%)

In the following table, the Chirals column lists the number of chiral outliers, the number of chiral centers analysed, the number of these observed in the model and the number defined in the Chemical Component Dictionary. Similar counts are reported in the Torsion and Rings columns. '-' means no outliers of that kind were identified.

Mol	Type	Chain	Res	Link	Chirals	Torsions	Rings
5	PGE	A	530	-	-	5/7/7/7	-
3	NAD	A	340	-	-	9/26/62/62	0/5/5/5
4	UPG	A	341	-	-	4/21/59/59	0/3/3/3

All (16) bond length outliers are listed below:

Mol	Chain	Res	Type	Atoms	Z	Observed(Å)	Ideal(Å)
3	A	340	NAD	C2N-C3N	8.14	1.51	1.39
3	A	340	NAD	C4N-C3N	7.29	1.51	1.39
4	A	341	UPG	C4-N3	5.26	1.42	1.33

*Continued on next page...*

Continued from previous page...

Mol	Chain	Res	Type	Atoms	Z	Observed(Å)	Ideal(Å)
3	A	340	NAD	C5N-C4N	4.58	1.48	1.38
4	A	341	UPG	C6-N1	4.33	1.41	1.35
4	A	341	UPG	C4'-C5'	3.01	1.59	1.53
3	A	340	NAD	C2N-N1N	2.93	1.38	1.35
3	A	340	NAD	C6N-N1N	2.66	1.41	1.35
4	A	341	UPG	PB-O3B	2.59	1.67	1.60
4	A	341	UPG	O6'-C6'	2.49	1.52	1.42
4	A	341	UPG	O5'-C1'	2.46	1.48	1.41
4	A	341	UPG	C6-C5	-2.36	1.32	1.38
4	A	341	UPG	C4'-C3'	2.35	1.58	1.52
4	A	341	UPG	O5'-C5'	2.33	1.50	1.44
3	A	340	NAD	C6N-C5N	-2.23	1.33	1.38
3	A	340	NAD	C2A-N3A	-2.06	1.28	1.32

All (17) bond angle outliers are listed below:

Mol	Chain	Res	Type	Atoms	Z	Observed(°)	Ideal(°)
3	A	340	NAD	C5N-C4N-C3N	-6.64	112.48	120.34
3	A	340	NAD	C6N-N1N-C2N	-5.55	116.91	121.97
4	A	341	UPG	O3A-PB-O3B	4.88	112.32	102.48
3	A	340	NAD	C5A-C6A-N6A	4.78	127.61	120.35
4	A	341	UPG	C5-C4-N3	-3.61	115.36	123.31
3	A	340	NAD	C5N-C6N-N1N	3.61	125.58	120.40
4	A	341	UPG	C4'-C3'-C2'	3.19	116.39	110.82
5	A	530	PGE	C5-O3-C4	3.10	126.71	113.29
4	A	341	UPG	C1'-C2'-C3'	2.84	115.91	110.00
4	A	341	UPG	O3B-C1'-C2'	2.84	113.58	108.38
4	A	341	UPG	C6'-C5'-C4'	2.81	119.58	113.00
5	A	530	PGE	C3-O2-C2	2.79	125.39	113.29
3	A	340	NAD	O3D-C3D-C4D	-2.63	103.44	111.05
3	A	340	NAD	C3N-C7N-N7N	2.55	120.81	117.75
4	A	341	UPG	O5'-C5'-C4'	2.46	114.17	109.69
4	A	341	UPG	O5C-C5C-C4C	-2.33	100.97	108.99
4	A	341	UPG	O2'-C2'-C1'	2.16	115.30	110.05

There are no chirality outliers.

All (18) torsion outliers are listed below:

Mol	Chain	Res	Type	Atoms
3	A	340	NAD	PN-O3-PA-O5B
3	A	340	NAD	C5D-O5D-PN-O1N
3	A	340	NAD	C5D-O5D-PN-O2N

Continued on next page...

*Continued from previous page...*

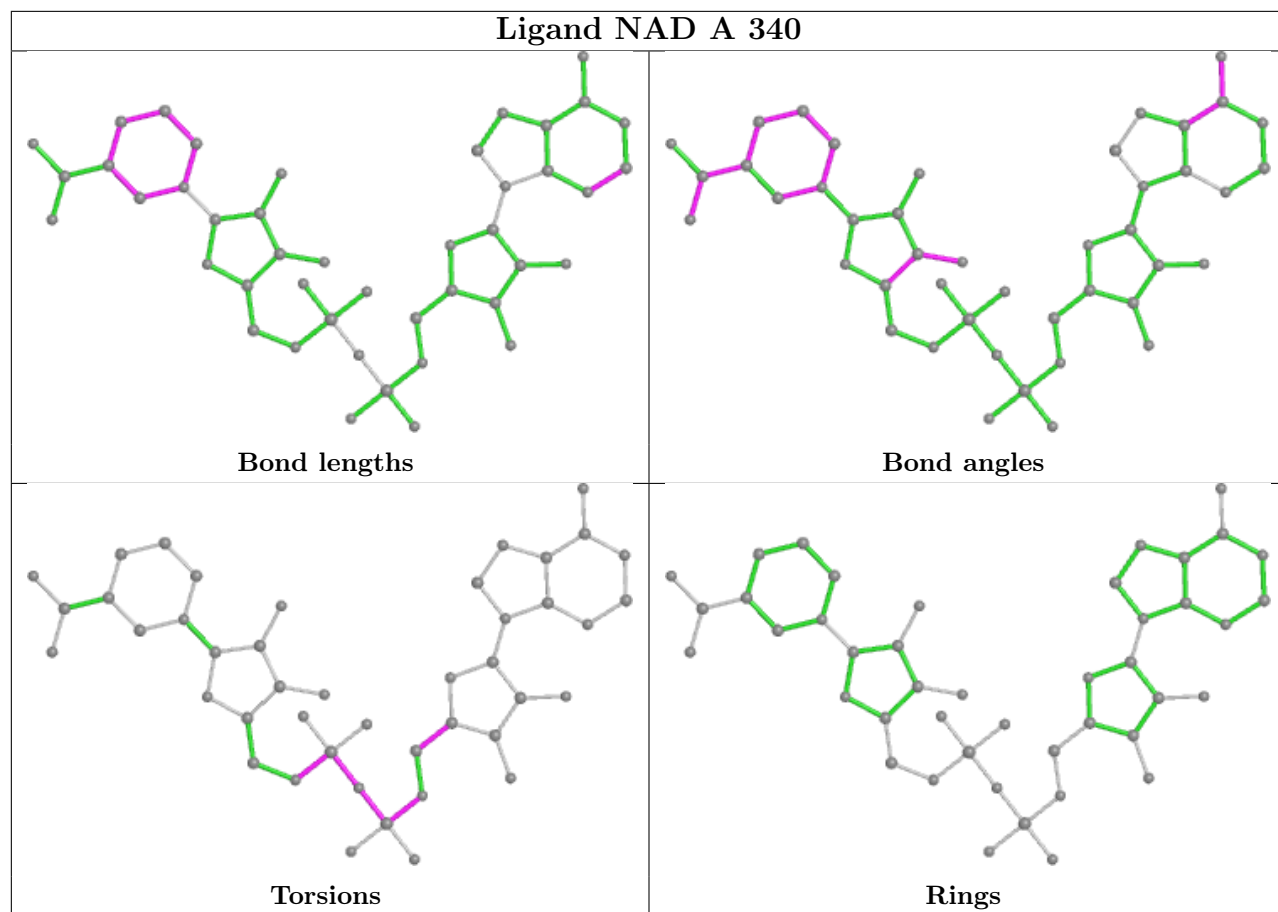
Mol	Chain	Res	Type	Atoms
4	A	341	UPG	O5'-C5'-C6'-O6'
4	A	341	UPG	C4'-C5'-C6'-O6'
5	A	530	PGE	O2-C3-C4-O3
5	A	530	PGE	O1-C1-C2-O2
5	A	530	PGE	C1-C2-O2-C3
5	A	530	PGE	C6-C5-O3-C4
4	A	341	UPG	C5C-O5C-PA-O3A
4	A	341	UPG	PB-O3A-PA-O1A
3	A	340	NAD	C5B-O5B-PA-O2A
5	A	530	PGE	C3-C4-O3-C5
3	A	340	NAD	C5B-O5B-PA-O3
3	A	340	NAD	C5D-O5D-PN-O3
3	A	340	NAD	PA-O3-PN-O1N
3	A	340	NAD	PA-O3-PN-O2N
3	A	340	NAD	O4B-C4B-C5B-O5B

There are no ring outliers.

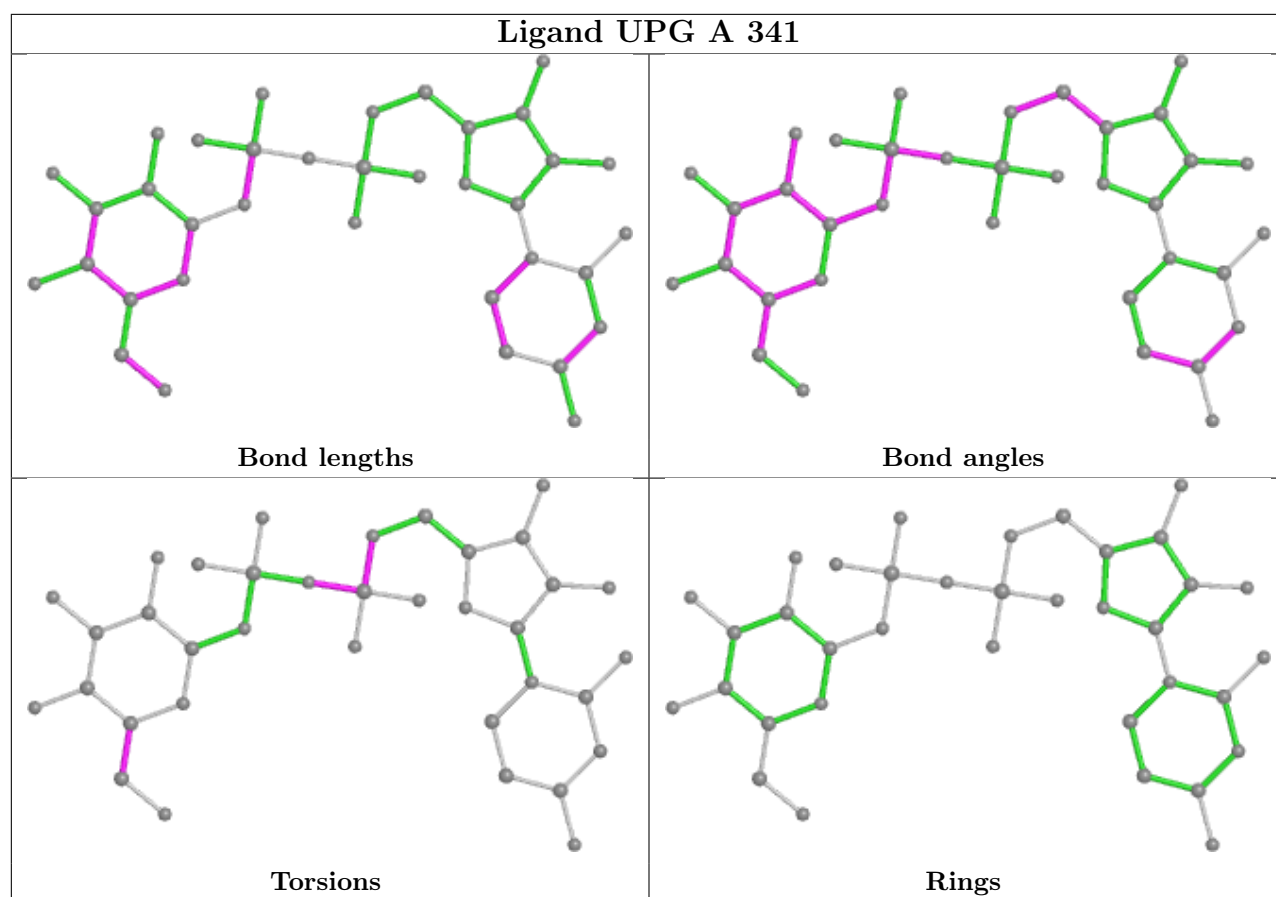
1 monomer is involved in 7 short contacts:

Mol	Chain	Res	Type	Clashes	Symm-Clashes
5	A	530	PGE	7	0

The following is a two-dimensional graphical depiction of Mogul quality analysis of bond lengths, bond angles, torsion angles, and ring geometry for all instances of the Ligand of Interest. In addition, ligands with molecular weight > 250 and outliers as shown on the validation Tables will also be included. For torsion angles, if less than 5% of the Mogul distribution of torsion angles is within 10 degrees of the torsion angle in question, then that torsion angle is considered an outlier. Any bond that is central to one or more torsion angles identified as an outlier by Mogul will be highlighted in the graph. For rings, the root-mean-square deviation (RMSD) between the ring in question and similar rings identified by Mogul is calculated over all ring torsion angles. If the average RMSD is greater than 60 degrees and the minimal RMSD between the ring in question and any Mogul-identified rings is also greater than 60 degrees, then that ring is considered an outlier. The outliers are highlighted in purple. The color gray indicates Mogul did not find sufficient equivalents in the CSD to analyse the geometry.







## 5.7 Other polymers [i](#)

There are no such residues in this entry.

## 5.8 Polymer linkage issues [i](#)

There are no chain breaks in this entry.

## 6 Fit of model and data [i](#)

### 6.1 Protein, DNA and RNA chains [i](#)

In the following table, the column labelled ‘#RSRZ > 2’ contains the number (and percentage) of RSRZ outliers, followed by percent RSRZ outliers for the chain as percentile scores relative to all X-ray entries and entries of similar resolution. The OWAB column contains the minimum, median, 95<sup>th</sup> percentile and maximum values of the occupancy-weighted average B-factor per residue. The column labelled ‘Q < 0.9’ lists the number of (and percentage) of residues with an average occupancy less than 0.9.

Mol	Chain	Analysed	<RSRZ>	#RSRZ>2	OWAB(Å <sup>2</sup> )	Q<0.9
1	A	338/338 (100%)	-0.57	0 <b>100</b> <b>100</b>	17, 26, 55, 94	0

There are no RSRZ outliers to report.

### 6.2 Non-standard residues in protein, DNA, RNA chains [i](#)

There are no non-standard protein/DNA/RNA residues in this entry.

### 6.3 Carbohydrates [i](#)

There are no monosaccharides in this entry.

### 6.4 Ligands [i](#)

LIGAND-RSR INFOmissingINFO

### 6.5 Other polymers [i](#)

There are no such residues in this entry.