



# Full wwPDB X-ray Structure Validation Report ⓘ

Feb 3, 2024 – 08:40 AM EST

PDB ID : 1LTZ  
Title : CRYSTAL STRUCTURE OF CHROMOBACTERIUM VIOLACEUM PHENYLALANINE HYDROXYLASE, STRUCTURE HAS BOUND IRON (III) AND OXIDIZED COFACTOR 7,8-DIHYDROBIOPTERIN  
Authors : Erlandsen, H.; Kim, J.Y.; Patch, M.G.; Han, A.; Volner, A.; Abu-Omar, M.M.; Stevens, R.C.  
Deposited on : 2002-05-21  
Resolution : 1.40 Å(reported)

This is a Full wwPDB X-ray Structure Validation Report for a publicly released PDB entry.

We welcome your comments at [validation@mail.wwpdb.org](mailto:validation@mail.wwpdb.org)

A user guide is available at

<https://www.wwpdb.org/validation/2017/XrayValidationReportHelp>

with specific help available everywhere you see the ⓘ symbol.

The types of validation reports are described at

<http://www.wwpdb.org/validation/2017/FAQs#types>.

---

The following versions of software and data (see [references ⓘ](#)) were used in the production of this report:

MolProbity : 4.02b-467  
Mogul : 1.8.5 (274361), CSD as541be (2020)  
Xtriage (Phenix) : 1.13  
EDS : 2.36  
Percentile statistics : 20191225.v01 (using entries in the PDB archive December 25th 2019)  
Refmac : 5.8.0158  
CCP4 : 7.0.044 (Gargrove)  
Ideal geometry (proteins) : Engh & Huber (2001)  
Ideal geometry (DNA, RNA) : Parkinson et al. (1996)  
Validation Pipeline (wwPDB-VP) : 2.36

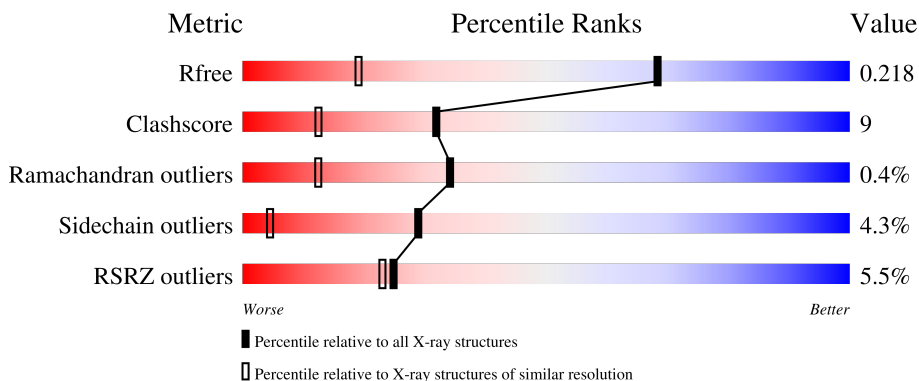
# 1 Overall quality at a glance

The following experimental techniques were used to determine the structure:

*X-RAY DIFFRACTION*

The reported resolution of this entry is 1.40 Å.

Percentile scores (ranging between 0-100) for global validation metrics of the entry are shown in the following graphic. The table shows the number of entries on which the scores are based.



Metric	Whole archive (#Entries)	Similar resolution (#Entries, resolution range(Å))
$R_{free}$	130704	1714 (1.40-1.40)
Clashscore	141614	1812 (1.40-1.40)
Ramachandran outliers	138981	1763 (1.40-1.40)
Sidechain outliers	138945	1762 (1.40-1.40)
RSRZ outliers	127900	1674 (1.40-1.40)

The table below summarises the geometric issues observed across the polymeric chains and their fit to the electron density. The red, orange, yellow and green segments of the lower bar indicate the fraction of residues that contain outliers for  $\geq 3$ , 2, 1 and 0 types of geometric quality criteria respectively. A grey segment represents the fraction of residues that are not modelled. The numeric value for each fraction is indicated below the corresponding segment, with a dot representing fractions  $\leq 5\%$ . The upper red bar (where present) indicates the fraction of residues that have poor fit to the electron density. The numeric value is given above the bar.

Mol	Chain	Length	Quality of chain
1	A	297	

## 2 Entry composition [i](#)

There are 5 unique types of molecules in this entry. The entry contains 2565 atoms, of which 0 are hydrogens and 0 are deuteriums.

In the tables below, the ZeroOcc column contains the number of atoms modelled with zero occupancy, the AltConf column contains the number of residues with at least one atom in alternate conformation and the Trace column contains the number of residues modelled with at most 2 atoms.

- Molecule 1 is a protein called PHENYLALANINE-4-HYDROXYLASE.

Mol	Chain	Residues	Atoms					ZeroOcc	AltConf	Trace
			Total	C	N	O	S			
1	A	274	2202	1429	366	399	8	0	0	0

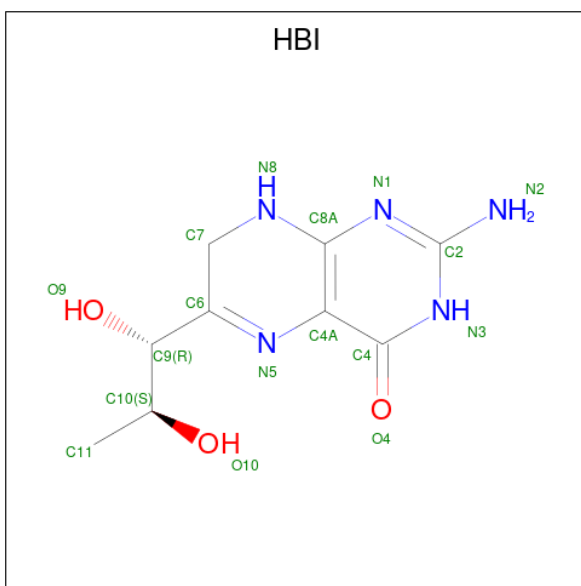
- Molecule 2 is FE (III) ION (three-letter code: FE) (formula: Fe).

Mol	Chain	Residues	Atoms		ZeroOcc	AltConf
2	A	1	Total	Fe	0	0
			1	1		

- Molecule 3 is CHLORIDE ION (three-letter code: CL) (formula: Cl).

Mol	Chain	Residues	Atoms		ZeroOcc	AltConf
3	A	1	Total	Cl	0	0
			1	1		

- Molecule 4 is 7,8-DIHYDROBIOPTERIN (three-letter code: HBI) (formula: C<sub>9</sub>H<sub>13</sub>N<sub>5</sub>O<sub>3</sub>).



Mol	Chain	Residues	Atoms				ZeroOcc	AltConf
			Total	C	N	O		
4	A	1	17	9	5	3	0	0

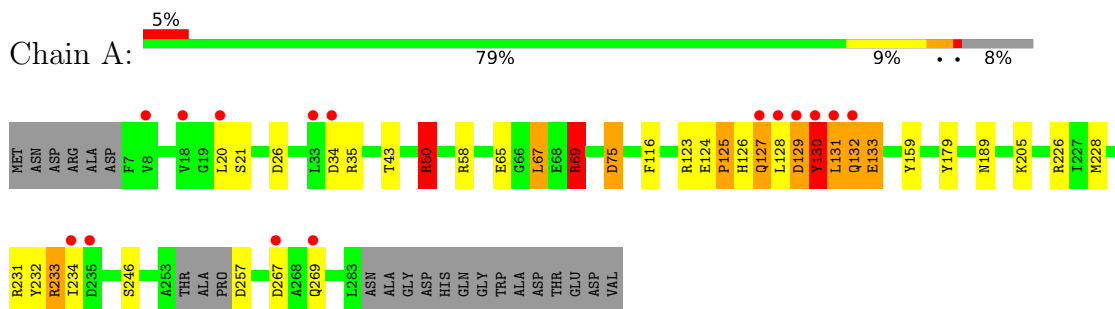
- Molecule 5 is water.

Mol	Chain	Residues	Atoms		ZeroOcc	AltConf
			Total	O		
5	A	344	344	344	0	0

### 3 Residue-property plots [i](#)

These plots are drawn for all protein, RNA, DNA and oligosaccharide chains in the entry. The first graphic for a chain summarises the proportions of the various outlier classes displayed in the second graphic. The second graphic shows the sequence view annotated by issues in geometry and electron density. Residues are color-coded according to the number of geometric quality criteria for which they contain at least one outlier: green = 0, yellow = 1, orange = 2 and red = 3 or more. A red dot above a residue indicates a poor fit to the electron density ( $RSRZ > 2$ ). Stretches of 2 or more consecutive residues without any outlier are shown as a green connector. Residues present in the sample, but not in the model, are shown in grey.

- Molecule 1: PHENYLALANINE-4-HYDROXYLASE



## 4 Data and refinement statistics

Property	Value	Source
Space group	P 21 21 21	Depositor
Cell constants a, b, c, $\alpha$ , $\beta$ , $\gamma$	46.70Å 67.86Å 91.47Å 90.00° 90.00° 90.00°	Depositor
Resolution (Å)	20.00 – 1.40 19.88 – 1.40	Depositor EDS
% Data completeness (in resolution range)	92.0 (20.00-1.40) 92.2 (19.88-1.40)	Depositor EDS
$R_{merge}$	0.06	Depositor
$R_{sym}$	(Not available)	Depositor
$\langle I/\sigma(I) \rangle$ <sup>1</sup>	3.00 (at 1.40Å)	Xtrriage
Refinement program	CNS, SHELXL-97	Depositor
R, $R_{free}$	0.159 , 0.223 0.197 , 0.218	Depositor DCC
$R_{free}$ test set	5425 reflections (10.15%)	wwPDB-VP
Wilson B-factor (Å <sup>2</sup> )	16.6	Xtrriage
Anisotropy	0.116	Xtrriage
Bulk solvent $k_{sol}$ (e/Å <sup>3</sup> ), $B_{sol}$ (Å <sup>2</sup> )	0.37 , 61.8	EDS
L-test for twinning <sup>2</sup>	$\langle  L  \rangle = 0.50$ , $\langle L^2 \rangle = 0.33$	Xtrriage
Estimated twinning fraction	No twinning to report.	Xtrriage
$F_o, F_c$ correlation	0.95	EDS
Total number of atoms	2565	wwPDB-VP
Average B, all atoms (Å <sup>2</sup> )	27.0	wwPDB-VP

Xtrriage's analysis on translational NCS is as follows: *The largest off-origin peak in the Patterson function is 7.19% of the height of the origin peak. No significant pseudotranslation is detected.*

<sup>1</sup>Intensities estimated from amplitudes.

<sup>2</sup>Theoretical values of  $\langle |L| \rangle$ ,  $\langle L^2 \rangle$  for acentric reflections are 0.5, 0.333 respectively for untwinned datasets, and 0.375, 0.2 for perfectly twinned datasets.

## 5 Model quality i

### 5.1 Standard geometry i

Bond lengths and bond angles in the following residue types are not validated in this section: CL, FE, HBI

The Z score for a bond length (or angle) is the number of standard deviations the observed value is removed from the expected value. A bond length (or angle) with  $|Z| > 5$  is considered an outlier worth inspection. RMSZ is the root-mean-square of all Z scores of the bond lengths (or angles).

Mol	Chain	Bond lengths		Bond angles	
		RMSZ	# Z  >5	RMSZ	# Z  >5
1	A	0.58	0/2265	1.54	30/3085 (1.0%)

Chiral center outliers are detected by calculating the chiral volume of a chiral center and verifying if the center is modelled as a planar moiety or with the opposite hand. A planarity outlier is detected by checking planarity of atoms in a peptide group, atoms in a mainchain group or atoms of a sidechain that are expected to be planar.

Mol	Chain	#Chirality outliers	#Planarity outliers
1	A	0	1

There are no bond length outliers.

All (30) bond angle outliers are listed below:

Mol	Chain	Res	Type	Atoms	Z	Observed( $^{\circ}$ )	Ideal( $^{\circ}$ )
1	A	69	ARG	CD-NE-CZ	26.49	160.69	123.60
1	A	50	ARG	CD-NE-CZ	25.48	159.28	123.60
1	A	129	ASP	CB-CG-OD1	17.70	134.23	118.30
1	A	233	ARG	NE-CZ-NH1	10.47	125.53	120.30
1	A	69	ARG	NE-CZ-NH1	10.39	125.50	120.30
1	A	130	TYR	CB-CG-CD2	-9.31	115.41	121.00
1	A	35	ARG	NE-CZ-NH2	-9.30	115.65	120.30
1	A	232	TYR	CB-CG-CD1	7.73	125.64	121.00
1	A	233	ARG	CD-NE-CZ	7.61	134.26	123.60
1	A	69	ARG	NH1-CZ-NH2	-7.55	111.09	119.40
1	A	231	ARG	NE-CZ-NH1	7.47	124.03	120.30
1	A	129	ASP	OD1-CG-OD2	-7.17	109.68	123.30
1	A	228	MET	CG-SD-CE	-6.94	89.10	100.20
1	A	130	TYR	CA-CB-CG	-6.67	100.72	113.40
1	A	179	TYR	CB-CG-CD2	6.37	124.82	121.00
1	A	35	ARG	NE-CZ-NH1	6.24	123.42	120.30

*Continued on next page...*

Continued from previous page...

Mol	Chain	Res	Type	Atoms	Z	Observed(°)	Ideal(°)
1	A	232	TYR	CB-CG-CD2	-6.23	117.26	121.00
1	A	69	ARG	NE-CZ-NH2	6.22	123.41	120.30
1	A	125	PRO	O-C-N	-6.02	113.07	122.70
1	A	132	GLN	CA-CB-CG	5.78	126.12	113.40
1	A	130	TYR	CG-CD1-CE1	-5.73	116.72	121.30
1	A	125	PRO	C-N-CA	-5.70	107.44	121.70
1	A	26	ASP	CB-CG-OD1	5.65	123.39	118.30
1	A	226	ARG	NE-CZ-NH1	5.61	123.11	120.30
1	A	58	ARG	NE-CZ-NH2	-5.58	117.51	120.30
1	A	116	PHE	CB-CG-CD1	-5.46	116.98	120.80
1	A	50	ARG	NE-CZ-NH2	5.25	122.93	120.30
1	A	50	ARG	NE-CZ-NH1	5.20	122.90	120.30
1	A	159	TYR	CG-CD2-CE2	5.18	125.44	121.30
1	A	67	LEU	CA-CB-CG	5.01	126.82	115.30

There are no chirality outliers.

All (1) planarity outliers are listed below:

Mol	Chain	Res	Type	Group
1	A	125	PRO	Mainchain

## 5.2 Too-close contacts [i](#)

In the following table, the Non-H and H(model) columns list the number of non-hydrogen atoms and hydrogen atoms in the chain respectively. The H(added) column lists the number of hydrogen atoms added and optimized by MolProbity. The Clashes column lists the number of clashes within the asymmetric unit, whereas Symm-Clashes lists symmetry-related clashes.

Mol	Chain	Non-H	H(model)	H(added)	Clashes	Symm-Clashes
1	A	2202	0	2147	39	0
2	A	1	0	0	0	0
3	A	1	0	0	0	0
4	A	17	0	13	0	0
5	A	344	0	0	29	0
All	All	2565	0	2160	39	0

The all-atom clashscore is defined as the number of clashes found per 1000 atoms (including hydrogen atoms). The all-atom clashscore for this structure is 9.

All (39) close contacts within the same asymmetric unit are listed below, sorted by their clash magnitude.



Atom-1	Atom-2	Interatomic distance (Å)	Clash overlap (Å)
1:A:131:LEU:HG	5:A:1331:HOH:O	1.83	0.78
1:A:124:GLU:O	1:A:127:GLN:HG3	1.84	0.77
1:A:131:LEU:HB3	5:A:1320:HOH:O	1.83	0.77
1:A:128:LEU:HD22	5:A:1337:HOH:O	1.84	0.76
1:A:128:LEU:HB3	5:A:1301:HOH:O	1.91	0.71
1:A:128:LEU:HB2	5:A:1339:HOH:O	1.90	0.70
1:A:133:GLU:HG3	5:A:1302:HOH:O	1.90	0.70
1:A:132:GLN:OE1	1:A:234:ILE:HD12	1.95	0.67
1:A:123:ARG:HD3	5:A:1331:HOH:O	1.96	0.66
1:A:128:LEU:HD13	5:A:1319:HOH:O	1.99	0.62
1:A:21:SER:HB2	5:A:1336:HOH:O	2.02	0.60
1:A:129:ASP:HB3	5:A:1294:HOH:O	2.04	0.57
1:A:65:GLU:O	1:A:69:ARG:HG2	2.07	0.54
1:A:129:ASP:HB3	5:A:1329:HOH:O	2.07	0.53
1:A:129:ASP:HB3	5:A:1322:HOH:O	2.09	0.53
1:A:50:ARG:CZ	1:A:205:LYS:HD2	2.40	0.51
1:A:205:LYS:N	5:A:1288:HOH:O	2.45	0.49
1:A:132:GLN:HG3	5:A:1341:HOH:O	2.10	0.49
1:A:131:LEU:HD22	5:A:1302:HOH:O	2.12	0.48
1:A:50:ARG:NH1	5:A:1301:HOH:O	2.47	0.47
1:A:189:ASN:ND2	5:A:1272:HOH:O	2.48	0.46
1:A:131:LEU:HA	5:A:1317:HOH:O	2.15	0.46
1:A:126:HIS:H	1:A:126:HIS:CD2	2.32	0.46
1:A:128:LEU:HB2	5:A:1319:HOH:O	2.16	0.46
1:A:130:TYR:N	5:A:1334:HOH:O	2.48	0.46
1:A:131:LEU:HD13	5:A:1302:HOH:O	2.17	0.45
1:A:128:LEU:N	5:A:1330:HOH:O	2.50	0.44
1:A:132:GLN:N	5:A:1341:HOH:O	2.49	0.44
1:A:132:GLN:CD	1:A:234:ILE:HD12	2.35	0.44
1:A:34:ASP:OD1	1:A:34:ASP:N	2.49	0.44
1:A:257:ASP:N	5:A:1298:HOH:O	2.50	0.44
1:A:123:ARG:NH1	1:A:128:LEU:O	2.50	0.44
1:A:75:ASP:OD1	1:A:75:ASP:N	2.50	0.44
1:A:131:LEU:HD12	5:A:1096:HOH:O	2.17	0.43
1:A:233:ARG:NH2	5:A:1051:HOH:O	2.50	0.43
1:A:129:ASP:N	5:A:1330:HOH:O	2.50	0.43
1:A:43:THR:HG23	1:A:128:LEU:HD11	2.01	0.42
1:A:133:GLU:HB3	5:A:1296:HOH:O	2.20	0.41
1:A:246:SER:HB2	5:A:1270:HOH:O	2.20	0.41

There are no symmetry-related clashes.

## 5.3 Torsion angles [i](#)

### 5.3.1 Protein backbone [i](#)

In the following table, the Percentiles column shows the percent Ramachandran outliers of the chain as a percentile score with respect to all X-ray entries followed by that with respect to entries of similar resolution.

The Analysed column shows the number of residues for which the backbone conformation was analysed, and the total number of residues.

Mol	Chain	Analysed	Favoured	Allowed	Outliers	Percentiles
1	A	270/297 (91%)	263 (97%)	6 (2%)	1 (0%)	34 12

All (1) Ramachandran outliers are listed below:

Mol	Chain	Res	Type
1	A	130	TYR

### 5.3.2 Protein sidechains [i](#)

In the following table, the Percentiles column shows the percent sidechain outliers of the chain as a percentile score with respect to all X-ray entries followed by that with respect to entries of similar resolution.

The Analysed column shows the number of residues for which the sidechain conformation was analysed, and the total number of residues.

Mol	Chain	Analysed	Rotameric	Outliers	Percentiles
1	A	232/249 (93%)	222 (96%)	10 (4%)	29 4

All (10) residues with a non-rotameric sidechain are listed below:

Mol	Chain	Res	Type
1	A	20	LEU
1	A	50	ARG
1	A	67	LEU
1	A	69	ARG
1	A	75	ASP
1	A	127	GLN
1	A	131	LEU
1	A	133	GLU
1	A	267	ASP
1	A	269	GLN

Sometimes sidechains can be flipped to improve hydrogen bonding and reduce clashes. All (4) such sidechains are listed below:

Mol	Chain	Res	Type
1	A	22	HIS
1	A	25	ASN
1	A	51	GLN
1	A	126	HIS

### 5.3.3 RNA [i](#)

There are no RNA molecules in this entry.

### 5.4 Non-standard residues in protein, DNA, RNA chains [i](#)

There are no non-standard protein/DNA/RNA residues in this entry.

### 5.5 Carbohydrates [i](#)

There are no monosaccharides in this entry.

### 5.6 Ligand geometry [i](#)

Of 3 ligands modelled in this entry, 2 are monoatomic - leaving 1 for Mogul analysis.

In the following table, the Counts columns list the number of bonds (or angles) for which Mogul statistics could be retrieved, the number of bonds (or angles) that are observed in the model and the number of bonds (or angles) that are defined in the Chemical Component Dictionary. The Link column lists molecule types, if any, to which the group is linked. The Z score for a bond length (or angle) is the number of standard deviations the observed value is removed from the expected value. A bond length (or angle) with  $|Z| > 2$  is considered an outlier worth inspection. RMSZ is the root-mean-square of all Z scores of the bond lengths (or angles).

Mol	Type	Chain	Res	Link	Bond lengths			Bond angles		
					Counts	RMSZ	# Z  > 2	Counts	RMSZ	# Z  > 2
4	HBI	A	500	-	13,18,18	3.73	3 (23%)	14,26,26	1.91	4 (28%)

In the following table, the Chirals column lists the number of chiral outliers, the number of chiral centers analysed, the number of these observed in the model and the number defined in the Chemical Component Dictionary. Similar counts are reported in the Torsion and Rings columns. '-' means no outliers of that kind were identified.

Mol	Type	Chain	Res	Link	Chirals	Torsions	Rings
4	HBI	A	500	-	-	0/4/17/17	0/2/2/2

All (3) bond length outliers are listed below:

Mol	Chain	Res	Type	Atoms	Z	Observed(Å)	Ideal(Å)
4	A	500	HBI	C6-N5	12.47	1.44	1.28
4	A	500	HBI	C7-N8	-2.83	1.40	1.45
4	A	500	HBI	O9-C9	2.23	1.46	1.42

All (4) bond angle outliers are listed below:

Mol	Chain	Res	Type	Atoms	Z	Observed(°)	Ideal(°)
4	A	500	HBI	C2-N3-C4	4.13	122.49	115.93
4	A	500	HBI	N2-C2-N1	2.98	121.88	117.25
4	A	500	HBI	N1-C2-N3	-2.94	120.80	125.42
4	A	500	HBI	C4A-C4-N3	-2.84	119.55	123.43

There are no chirality outliers.

There are no torsion outliers.

There are no ring outliers.

No monomer is involved in short contacts.

## 5.7 Other polymers [i](#)

There are no such residues in this entry.

## 5.8 Polymer linkage issues [i](#)

There are no chain breaks in this entry.

## 6 Fit of model and data [i](#)

### 6.1 Protein, DNA and RNA chains [i](#)

In the following table, the column labelled ‘#RSRZ> 2’ contains the number (and percentage) of RSRZ outliers, followed by percent RSRZ outliers for the chain as percentile scores relative to all X-ray entries and entries of similar resolution. The OWAB column contains the minimum, median, 95<sup>th</sup> percentile and maximum values of the occupancy-weighted average B-factor per residue. The column labelled ‘Q< 0.9’ lists the number of (and percentage) of residues with an average occupancy less than 0.9.

Mol	Chain	Analysed	<RSRZ>	#RSRZ>2	OWAB(Å <sup>2</sup> )	Q<0.9
1	A	274/297 (92%)	0.32	15 (5%) 25 23	13, 23, 42, 73	0

All (15) RSRZ outliers are listed below:

Mol	Chain	Res	Type	RSRZ
1	A	130	TYR	9.1
1	A	128	LEU	5.9
1	A	132	GLN	4.2
1	A	235	ASP	3.6
1	A	269	GLN	3.4
1	A	131	LEU	3.3
1	A	129	ASP	3.2
1	A	267	ASP	2.8
1	A	234	ILE	2.6
1	A	34	ASP	2.6
1	A	20	LEU	2.5
1	A	33	LEU	2.5
1	A	8	VAL	2.1
1	A	127	GLN	2.0
1	A	18	VAL	2.0

### 6.2 Non-standard residues in protein, DNA, RNA chains [i](#)

There are no non-standard protein/DNA/RNA residues in this entry.

### 6.3 Carbohydrates [i](#)

There are no monosaccharides in this entry.

## 6.4 Ligands [i](#)

In the following table, the Atoms column lists the number of modelled atoms in the group and the number defined in the chemical component dictionary. The B-factors column lists the minimum, median, 95<sup>th</sup> percentile and maximum values of B factors of atoms in the group. The column labelled 'Q< 0.9' lists the number of atoms with occupancy less than 0.9.

Mol	Type	Chain	Res	Atoms	RSCC	RSR	B-factors(Å <sup>2</sup> )	Q<0.9
4	HBI	A	500	17/17	0.91	0.10	21,24,40,46	0
3	CL	A	401	1/1	0.99	0.06	22,22,22,22	0
2	FE	A	400	1/1	1.00	0.02	15,15,15,15	0

## 6.5 Other polymers [i](#)

There are no such residues in this entry.