



# Full wwPDB X-ray Structure Validation Report ⓘ

Nov 2, 2021 – 01:32 AM EDT

PDB ID : 1LWF  
Title : CRYSTAL STRUCTURE OF A MUTANT HIV-1 REVERSE TRANSCRIPTASE (RTMQ+M184V: M41L/D67N/K70R/M184V/T215Y) IN COMPLEX WITH NEVIRAPINE  
Authors : Ren, J.; Chamberlain, P.P.; Nichols, C.E.; Douglas, L.; Stuart, D.I.; Stammers, D.K.  
Deposited on : 2002-05-31  
Resolution : 2.80 Å(reported)

This is a Full wwPDB X-ray Structure Validation Report for a publicly released PDB entry.

We welcome your comments at [validation@mail.wwpdb.org](mailto:validation@mail.wwpdb.org)  
A user guide is available at  
<https://www.wwpdb.org/validation/2017/XrayValidationReportHelp>  
with specific help available everywhere you see the ⓘ symbol.

---

The following versions of software and data (see [references ⓘ](#)) were used in the production of this report:

MolProbity : 4.02b-467  
Mogul : 1.8.5 (274361), CSD as541be (2020)  
Xtriage (Phenix) : 1.13  
EDS : 2.23.2  
buster-report : 1.1.7 (2018)  
Percentile statistics : 20191225.v01 (using entries in the PDB archive December 25th 2019)  
Refmac : 5.8.0158  
CCP4 : 7.0.044 (Gargrove)  
Ideal geometry (proteins) : Engh & Huber (2001)  
Ideal geometry (DNA, RNA) : Parkinson et al. (1996)  
Validation Pipeline (wwPDB-VP) : 2.23.2

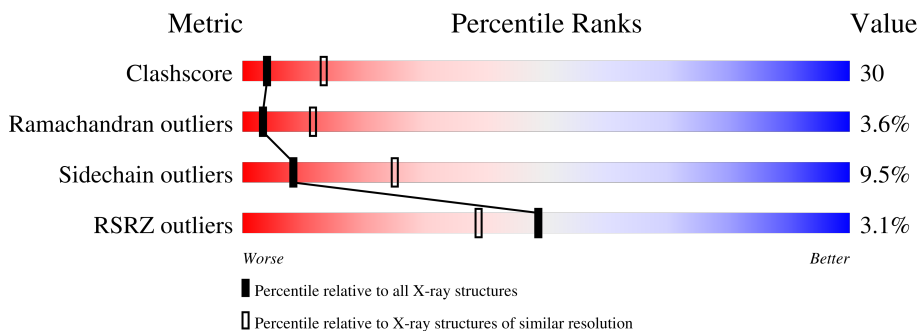
# 1 Overall quality at a glance

The following experimental techniques were used to determine the structure:

*X-RAY DIFFRACTION*

The reported resolution of this entry is 2.80 Å.

Percentile scores (ranging between 0-100) for global validation metrics of the entry are shown in the following graphic. The table shows the number of entries on which the scores are based.



Metric	Whole archive (#Entries)	Similar resolution (#Entries, resolution range(Å))
Clashscore	141614	3569 (2.80-2.80)
Ramachandran outliers	138981	3498 (2.80-2.80)
Sidechain outliers	138945	3500 (2.80-2.80)
RSRZ outliers	127900	3078 (2.80-2.80)

The table below summarises the geometric issues observed across the polymeric chains and their fit to the electron density. The red, orange, yellow and green segments of the lower bar indicate the fraction of residues that contain outliers for  $\geq 3$ , 2, 1 and 0 types of geometric quality criteria respectively. A grey segment represents the fraction of residues that are not modelled. The numeric value for each fraction is indicated below the corresponding segment, with a dot representing fractions  $\leq 5\%$ . The upper red bar (where present) indicates the fraction of residues that have poor fit to the electron density. The numeric value is given above the bar.

Mol	Chain	Length	Quality of chain
1	A	560	 4% 44% 46% 6% ..
2	B	440	 2% 45% 37% 7% 10%

## 2 Entry composition [i](#)

There are 4 unique types of molecules in this entry. The entry contains 7729 atoms, of which 0 are hydrogens and 0 are deuteriums.

In the tables below, the ZeroOcc column contains the number of atoms modelled with zero occupancy, the AltConf column contains the number of residues with at least one atom in alternate conformation and the Trace column contains the number of residues modelled with at most 2 atoms.

- Molecule 1 is a protein called HIV-1 REVERSE TRANSCRIPTASE.

Mol	Chain	Residues	Atoms					ZeroOcc	AltConf	Trace
			Total	C	N	O	S			
1	A	543	4424	2864	734	820	6	0	0	0

There are 6 discrepancies between the modelled and reference sequences:

Chain	Residue	Modelled	Actual	Comment	Reference
A	41	LEU	MET	engineered mutation	UNP P04585
A	67	ASN	ASP	engineered mutation	UNP P04585
A	70	ARG	LYS	engineered mutation	UNP P04585
A	184	VAL	MET	engineered mutation	UNP P04585
A	215	TYR	THR	engineered mutation	UNP P04585
A	280	CSD	CYS	modified residue	UNP P04585

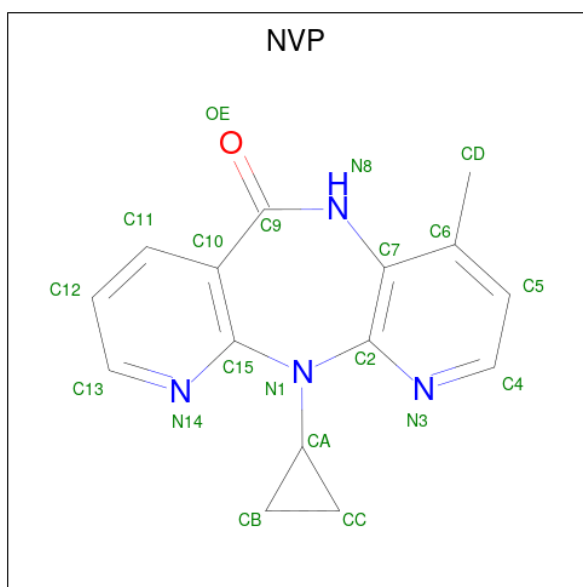
- Molecule 2 is a protein called HIV-1 REVERSE TRANSCRIPTASE.

Mol	Chain	Residues	Atoms					ZeroOcc	AltConf	Trace
			Total	C	N	O	S			
2	B	395	3272	2125	549	593	5	0	0	0

There are 5 discrepancies between the modelled and reference sequences:

Chain	Residue	Modelled	Actual	Comment	Reference
B	41	LEU	MET	engineered mutation	UNP P04585
B	67	ASN	ASP	engineered mutation	UNP P04585
B	70	ARG	LYS	engineered mutation	UNP P04585
B	184	VAL	MET	engineered mutation	UNP P04585
B	215	TYR	THR	engineered mutation	UNP P04585

- Molecule 3 is 11-CYCLOPROPYL-5,11-DIHYDRO-4-METHYL-6H-DIPYRIDO[3,2-B:2',3'-E][1,4]DIAZEPIN-6-ONE (three-letter code: NVP) (formula: C<sub>15</sub>H<sub>14</sub>N<sub>4</sub>O).



Mol	Chain	Residues	Atoms				ZeroOcc	AltConf
			Total	C	N	O		
3	A	1	20	15	4	1	0	0

- Molecule 4 is water.

Mol	Chain	Residues	Atoms		ZeroOcc	AltConf
4	A	9	Total	O	0	0
			9	9		
4	B	4	Total	O	0	0
			4	4		

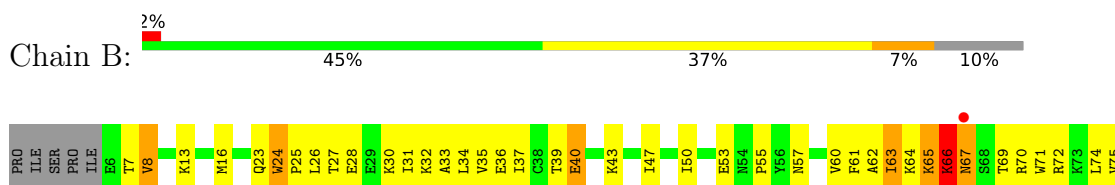
### 3 Residue-property plots [i](#)

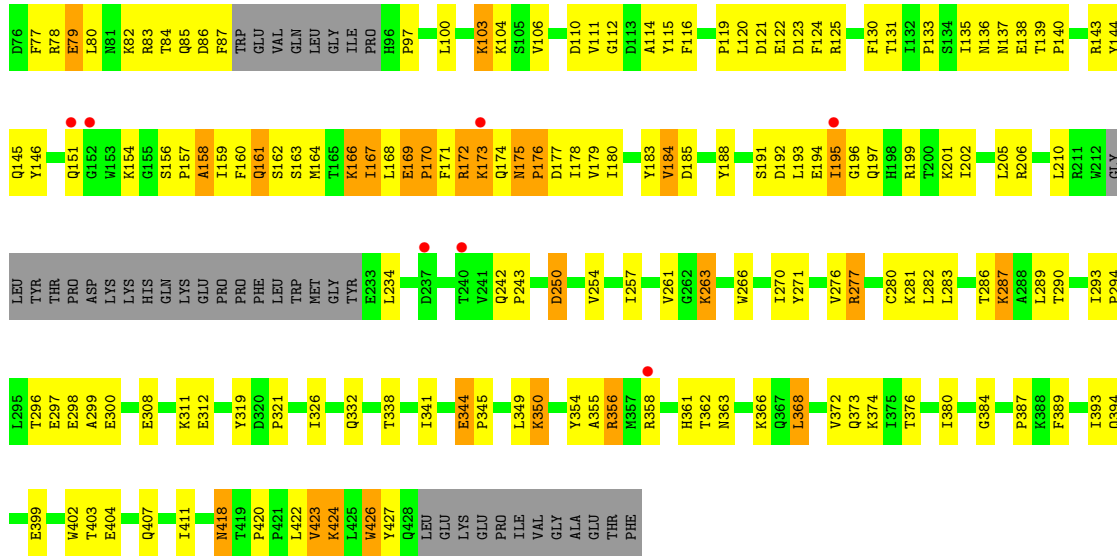
These plots are drawn for all protein, RNA, DNA and oligosaccharide chains in the entry. The first graphic for a chain summarises the proportions of the various outlier classes displayed in the second graphic. The second graphic shows the sequence view annotated by issues in geometry and electron density. Residues are color-coded according to the number of geometric quality criteria for which they contain at least one outlier: green = 0, yellow = 1, orange = 2 and red = 3 or more. A red dot above a residue indicates a poor fit to the electron density ( $RSRZ > 2$ ). Stretches of 2 or more consecutive residues without any outlier are shown as a green connector. Residues present in the sample, but not in the model, are shown in grey.

#### • Molecule 1: HIV-1 REVERSE TRANSCRIPTASE



#### • Molecule 2: HIV-1 REVERSE TRANSCRIPTASE





## 4 Data and refinement statistics

Property	Value	Source
Space group	P 21 21 21	Depositor
Cell constants a, b, c, $\alpha$ , $\beta$ , $\gamma$	137.90Å 109.50Å 74.10Å 90.00° 90.00° 90.00°	Depositor
Resolution (Å)	26.00 – 2.80 26.00 – 2.78	Depositor EDS
% Data completeness (in resolution range)	98.5 (26.00-2.80) 97.6 (26.00-2.78)	Depositor EDS
$R_{merge}$	0.05	Depositor
$R_{sym}$	(Not available)	Depositor
$\langle I/\sigma(I) \rangle$ <sup>1</sup>	1.46 (at 2.76Å)	Xtrriage
Refinement program	CNS	Depositor
R, $R_{free}$	0.234 , 0.289 0.218 , (Not available)	Depositor DCC
$R_{free}$ test set	No test flags present.	wwPDB-VP
Wilson B-factor (Å <sup>2</sup> )	68.0	Xtrriage
Anisotropy	0.338	Xtrriage
Bulk solvent $k_{sol}$ (e/Å <sup>3</sup> ), $B_{sol}$ (Å <sup>2</sup> )	0.32 , 84.2	EDS
L-test for twinning <sup>2</sup>	$\langle  L  \rangle = 0.50$ , $\langle L^2 \rangle = 0.33$	Xtrriage
Estimated twinning fraction	No twinning to report.	Xtrriage
$F_o, F_c$ correlation	0.94	EDS
Total number of atoms	7729	wwPDB-VP
Average B, all atoms (Å <sup>2</sup> )	76.0	wwPDB-VP

Xtrriage's analysis on translational NCS is as follows: *The largest off-origin peak in the Patterson function is 3.05% of the height of the origin peak. No significant pseudotranslation is detected.*

<sup>1</sup>Intensities estimated from amplitudes.

<sup>2</sup>Theoretical values of  $\langle |L| \rangle$ ,  $\langle L^2 \rangle$  for acentric reflections are 0.5, 0.333 respectively for untwinned datasets, and 0.375, 0.2 for perfectly twinned datasets.

## 5 Model quality [i](#)

### 5.1 Standard geometry [i](#)

Bond lengths and bond angles in the following residue types are not validated in this section: NVP, CSD

The Z score for a bond length (or angle) is the number of standard deviations the observed value is removed from the expected value. A bond length (or angle) with  $|Z| > 5$  is considered an outlier worth inspection. RMSZ is the root-mean-square of all Z scores of the bond lengths (or angles).

Mol	Chain	Bond lengths		Bond angles	
		RMSZ	# Z  >5	RMSZ	# Z  >5
1	A	0.54	0/4530	0.77	3/6157 (0.0%)
2	B	0.55	0/3362	0.76	1/4566 (0.0%)
All	All	0.55	0/7892	0.77	4/10723 (0.0%)

There are no bond length outliers.

All (4) bond angle outliers are listed below:

Mol	Chain	Res	Type	Atoms	Z	Observed(°)	Ideal(°)
2	B	65	LYS	N-CA-C	-6.76	92.75	111.00
1	A	491	LEU	N-CA-C	5.37	125.51	111.00
1	A	233	GLU	N-CA-C	-5.05	97.36	111.00
1	A	543	GLY	N-CA-C	5.01	125.63	113.10

There are no chirality outliers.

There are no planarity outliers.

### 5.2 Too-close contacts [i](#)

In the following table, the Non-H and H(model) columns list the number of non-hydrogen atoms and hydrogen atoms in the chain respectively. The H(added) column lists the number of hydrogen atoms added and optimized by MolProbity. The Clashes column lists the number of clashes within the asymmetric unit, whereas Symm-Clashes lists symmetry-related clashes.

Mol	Chain	Non-H	H(model)	H(added)	Clashes	Symm-Clashes
1	A	4424	0	4464	279	0
2	B	3272	0	3305	197	0
3	A	20	0	14	0	0
4	A	9	0	0	1	0
4	B	4	0	0	1	0

*Continued on next page...*



*Continued from previous page...*

Mol	Chain	Non-H	H(model)	H(added)	Clashes	Symm-Clashes
All	All	7729	0	7783	466	0

The all-atom clashscore is defined as the number of clashes found per 1000 atoms (including hydrogen atoms). The all-atom clashscore for this structure is 30.

All (466) close contacts within the same asymmetric unit are listed below, sorted by their clash magnitude.

Atom-1	Atom-2	Interatomic distance (Å)	Clash overlap (Å)
1:A:240:THR:HG22	1:A:315:HIS:HB3	1.34	1.09
1:A:132:ILE:HB	1:A:142:ILE:HB	1.36	1.06
1:A:270:ILE:HD11	1:A:314:VAL:HG11	1.41	1.03
2:B:175:ASN:HD21	2:B:201:LYS:NZ	1.59	1.00
2:B:103:LYS:HE3	2:B:179:VAL:HG23	1.42	0.98
2:B:184:VAL:HG12	2:B:185:ASP:H	1.27	0.97
1:A:139:THR:HG22	1:A:140:PRO:HD3	1.44	0.96
1:A:240:THR:CG2	1:A:315:HIS:HB3	1.96	0.96
2:B:122:GLU:HA	2:B:125:ARG:HD2	1.46	0.95
1:A:281:LYS:HG2	1:A:284:ARG:HH11	1.35	0.91
2:B:184:VAL:HG12	2:B:185:ASP:N	1.85	0.88
1:A:73:LYS:HG2	1:A:74:LEU:N	1.89	0.87
1:A:24:TRP:CD2	1:A:25:PRO:HD3	2.09	0.86
1:A:210:LEU:CD1	1:A:215:TYR:HA	2.05	0.86
2:B:72:ARG:HH21	2:B:151:GLN:HE22	1.25	0.85
1:A:31:ILE:O	1:A:35:VAL:HG23	1.77	0.84
2:B:356:ARG:N	2:B:356:ARG:HD2	1.92	0.84
1:A:281:LYS:HG2	1:A:284:ARG:NH1	1.92	0.84
1:A:131:THR:HG1	1:A:143:ARG:HH11	1.23	0.82
1:A:486:LEU:HB3	1:A:524:GLN:HG2	1.63	0.81
2:B:387:PRO:HG2	2:B:389:PHE:CE1	2.15	0.81
1:A:24:TRP:CG	1:A:25:PRO:HD3	2.14	0.81
1:A:317:VAL:HG12	1:A:318:TYR:N	1.94	0.80
1:A:282:LEU:HD11	1:A:296:THR:HG22	1.62	0.79
1:A:111:VAL:HG23	1:A:112:GLY:H	1.46	0.79
1:A:270:ILE:HD12	1:A:270:ILE:O	1.83	0.78
1:A:130:PHE:CZ	1:A:144:TYR:HB2	2.18	0.78
1:A:270:ILE:CD1	1:A:314:VAL:HG11	2.14	0.78
1:A:91:GLN:NE2	1:A:93:GLY:HA3	1.97	0.78
1:A:473:THR:HG23	1:A:476:LYS:HG3	1.66	0.76
2:B:282:LEU:HD21	2:B:296:THR:HG23	1.68	0.76
1:A:131:THR:HG1	1:A:143:ARG:NH1	1.84	0.75
1:A:26:LEU:HD22	1:A:30:LYS:CE	2.16	0.75

*Continued on next page...*

*Continued from previous page...*

Atom-1	Atom-2	Interatomic distance (Å)	Clash overlap (Å)
1:A:132:ILE:CB	1:A:142:ILE:HB	2.14	0.74
1:A:516:GLU:OE2	1:A:516:GLU:HA	1.87	0.74
2:B:175:ASN:N	2:B:176:PRO:HD3	2.02	0.73
2:B:33:ALA:O	2:B:37:ILE:HG13	1.88	0.73
1:A:31:ILE:HG12	1:A:133:PRO:HG2	1.71	0.73
1:A:139:THR:HG22	1:A:140:PRO:CD	2.19	0.72
2:B:66:LYS:H	2:B:407:GLN:NE2	1.87	0.72
1:A:170:PRO:HG2	1:A:171:PHE:H	1.55	0.72
1:A:317:VAL:HG12	1:A:318:TYR:H	1.52	0.72
1:A:405:TYR:CE2	1:A:407:GLN:HB3	2.25	0.72
1:A:184:VAL:HG12	1:A:185:ASP:N	2.03	0.71
2:B:65:LYS:C	2:B:67:ASN:H	1.93	0.71
2:B:120:LEU:HD23	2:B:121:ASP:N	2.05	0.71
1:A:131:THR:OG1	1:A:143:ARG:NH1	2.23	0.71
1:A:211:ARG:O	1:A:211:ARG:HG2	1.90	0.71
1:A:278:GLN:HG2	1:A:298:GLU:HB3	1.73	0.71
1:A:96:HIS:HB2	4:A:1001:HOH:O	1.90	0.70
1:A:122:GLU:H	1:A:122:GLU:CD	1.92	0.70
1:A:26:LEU:HD22	1:A:30:LYS:HE3	1.74	0.69
1:A:9:PRO:HA	1:A:121:ASP:OD2	1.92	0.69
2:B:175:ASN:HD21	2:B:201:LYS:HZ2	1.38	0.69
1:A:210:LEU:HD13	1:A:215:TYR:HA	1.73	0.69
1:A:296:THR:HG23	1:A:299:ALA:HB2	1.75	0.68
2:B:114:ALA:HB1	2:B:160:PHE:CZ	2.28	0.68
1:A:120:LEU:HD12	1:A:121:ASP:H	1.58	0.68
1:A:142:ILE:N	1:A:142:ILE:HD12	2.09	0.68
1:A:73:LYS:CG	1:A:74:LEU:N	2.56	0.68
1:A:110:ASP:O	1:A:217:PRO:HD3	1.94	0.67
2:B:372:VAL:HG13	2:B:389:PHE:CE2	2.29	0.67
1:A:234:LEU:HD12	1:A:234:LEU:O	1.94	0.67
1:A:486:LEU:HB3	1:A:524:GLN:CG	2.24	0.67
2:B:354:TYR:CE1	2:B:374:LYS:HD3	2.30	0.67
1:A:292:VAL:C	1:A:293:ILE:HD12	2.15	0.67
2:B:174:GLN:HG3	2:B:175:ASN:OD1	1.95	0.67
1:A:100:LEU:O	1:A:318:TYR:HB3	1.95	0.67
1:A:486:LEU:CD1	1:A:521:ILE:HG23	2.25	0.66
1:A:249:LYS:NZ	1:A:256:ASP:OD1	2.26	0.66
2:B:193:LEU:HD23	2:B:197:GLN:HB3	1.75	0.66
2:B:341:ILE:N	2:B:341:ILE:HD12	2.10	0.66
1:A:40:GLU:O	1:A:43:LYS:HG2	1.96	0.66
1:A:253:THR:O	1:A:257:ILE:HG12	1.95	0.66

*Continued on next page...*

*Continued from previous page...*

Atom-1	Atom-2	Interatomic distance (Å)	Clash overlap (Å)
2:B:179:VAL:C	2:B:180:ILE:HD12	2.16	0.66
1:A:132:ILE:HB	1:A:142:ILE:CB	2.21	0.66
1:A:450:THR:OG1	1:A:452:LEU:HD13	1.95	0.66
1:A:458:VAL:HG13	1:A:548:VAL:HG13	1.79	0.65
1:A:109:LEU:HD11	1:A:202:ILE:HG23	1.79	0.65
2:B:173:LYS:HA	2:B:176:PRO:HG3	1.78	0.65
2:B:420:PRO:O	2:B:423:VAL:HG22	1.96	0.65
1:A:244:ILE:HD11	1:A:263:LYS:HD3	1.77	0.64
1:A:26:LEU:HD22	1:A:30:LYS:NZ	2.12	0.64
1:A:58:THR:CG2	1:A:59:PRO:HD2	2.26	0.64
1:A:418:ASN:O	1:A:420:PRO:HD3	1.96	0.64
2:B:250:ASP:OD1	2:B:250:ASP:N	2.28	0.64
2:B:50:ILE:HG21	2:B:145:GLN:HB3	1.78	0.64
2:B:158:ALA:O	2:B:161:GLN:HB2	1.98	0.64
1:A:518:VAL:O	1:A:522:ILE:HG13	1.98	0.63
2:B:32:LYS:O	2:B:35:VAL:HG22	1.98	0.63
2:B:175:ASN:N	2:B:176:PRO:CD	2.62	0.63
1:A:473:THR:CG2	1:A:476:LYS:HG3	2.27	0.63
1:A:114:ALA:HB1	1:A:160:PHE:CZ	2.32	0.63
2:B:13:LYS:HE2	2:B:82:LYS:O	1.99	0.63
1:A:8:VAL:HG13	2:B:53:GLU:OE1	1.98	0.63
2:B:422:LEU:HD22	2:B:426:TRP:CZ2	2.33	0.63
1:A:150:PRO:HG2	1:A:153:TRP:HB2	1.81	0.63
1:A:287:LYS:HG2	1:A:291:GLU:OE2	1.99	0.63
1:A:229:TRP:CD1	1:A:230:MET:HG2	2.34	0.63
1:A:293:ILE:HD12	1:A:293:ILE:N	2.13	0.63
2:B:72:ARG:NH2	2:B:151:GLN:HE22	1.96	0.63
2:B:175:ASN:HD21	2:B:201:LYS:HZ1	1.40	0.62
2:B:361:HIS:HE1	2:B:366:LYS:HD2	1.64	0.62
2:B:65:LYS:O	2:B:67:ASN:N	2.29	0.62
1:A:282:LEU:HD11	1:A:296:THR:CG2	2.30	0.62
1:A:118:VAL:O	1:A:148:VAL:HG22	2.00	0.62
2:B:97:PRO:HG2	2:B:100:LEU:HD22	1.82	0.62
2:B:25:PRO:O	2:B:26:LEU:HD23	2.00	0.62
1:A:417:VAL:O	1:A:417:VAL:HG13	1.98	0.62
1:A:498:ASP:HB2	1:A:538:ALA:HB2	1.82	0.62
1:A:317:VAL:CG1	1:A:318:TYR:H	2.13	0.62
1:A:317:VAL:CG1	1:A:318:TYR:N	2.62	0.62
1:A:435:VAL:HG22	2:B:290:THR:HG21	1.81	0.61
1:A:471:ASP:O	1:A:471:ASP:OD2	2.18	0.61
2:B:169:GLU:O	2:B:172:ARG:HB2	2.00	0.61

*Continued on next page...*

*Continued from previous page...*

Atom-1	Atom-2	Interatomic distance (Å)	Clash overlap (Å)
2:B:175:ASN:O	2:B:177:ASP:N	2.33	0.61
1:A:460:ASN:HA	2:B:286:THR:O	2.00	0.61
1:A:396:GLU:H	1:A:396:GLU:CD	2.03	0.61
1:A:235:HIS:HB3	1:A:236:PRO:HD2	1.81	0.61
2:B:72:ARG:HH21	2:B:151:GLN:NE2	1.97	0.61
2:B:361:HIS:CE1	2:B:366:LYS:HD2	2.36	0.61
1:A:442:VAL:HG12	1:A:457:TYR:HB3	1.82	0.61
1:A:24:TRP:CD1	1:A:24:TRP:N	2.68	0.61
2:B:27:THR:O	2:B:31:ILE:HG12	2.01	0.60
1:A:37:ILE:O	1:A:40:GLU:HB3	2.00	0.60
2:B:277:ARG:NH2	2:B:281:LYS:HZ1	1.99	0.60
2:B:35:VAL:O	2:B:39:THR:HG23	2.00	0.60
2:B:50:ILE:CG2	2:B:145:GLN:HB3	2.30	0.60
2:B:349:LEU:O	2:B:350:LYS:HD2	2.01	0.60
2:B:72:ARG:NH1	2:B:110:ASP:OD2	2.35	0.60
1:A:96:HIS:CE1	1:A:350:LYS:HE2	2.37	0.60
2:B:282:LEU:CD2	2:B:296:THR:HG23	2.30	0.60
1:A:110:ASP:HB2	1:A:223:LYS:HE2	1.84	0.59
2:B:197:GLN:O	2:B:201:LYS:HB2	2.02	0.59
1:A:442:VAL:HG11	1:A:485:ALA:HB2	1.84	0.59
1:A:79:GLU:O	1:A:83:ARG:HG3	2.01	0.59
1:A:441:TYR:O	1:A:548:VAL:HG11	2.02	0.59
2:B:191:SER:HB2	2:B:193:LEU:HD13	1.85	0.59
1:A:219:LYS:HA	1:A:222:GLN:OE1	2.03	0.59
1:A:46:LYS:HE3	1:A:116:PHE:O	2.03	0.59
1:A:93:GLY:O	1:A:94:ILE:HD13	2.02	0.59
1:A:465:LYS:HG2	1:A:466:VAL:N	2.16	0.59
1:A:406:TRP:CH2	2:B:418:ASN:HA	2.38	0.59
2:B:368:LEU:O	2:B:372:VAL:HG23	2.02	0.59
1:A:108:VAL:HA	1:A:187:LEU:O	2.03	0.58
1:A:366:LYS:O	1:A:369:THR:HB	2.03	0.58
1:A:270:ILE:HD12	1:A:270:ILE:C	2.23	0.58
2:B:60:VAL:HG12	2:B:75:VAL:HG22	1.84	0.58
1:A:126:LYS:HE3	1:A:127:TYR:CZ	2.39	0.58
1:A:458:VAL:HG13	1:A:548:VAL:CG1	2.32	0.58
2:B:61:PHE:CZ	2:B:74:LEU:HD23	2.38	0.58
2:B:261:VAL:HG13	2:B:276:VAL:HG21	1.86	0.58
1:A:58:THR:HG23	1:A:59:PRO:HD2	1.85	0.58
2:B:156:SER:HB2	2:B:157:PRO:HD3	1.85	0.58
1:A:509:GLN:N	1:A:510:PRO:HD3	2.19	0.58
1:A:542:ILE:HG13	2:B:280:CYS:SG	2.44	0.58

*Continued on next page...*

*Continued from previous page...*

Atom-1	Atom-2	Interatomic distance (Å)	Clash overlap (Å)
1:A:175:ASN:N	1:A:176:PRO:HD3	2.18	0.58
2:B:8:VAL:HG13	2:B:159:ILE:HD13	1.84	0.58
2:B:100:LEU:HA	2:B:103:LYS:CG	2.34	0.58
2:B:169:GLU:HB3	2:B:170:PRO:HD3	1.86	0.58
1:A:297:GLU:O	1:A:300:GLU:HB2	2.03	0.57
1:A:111:VAL:HG23	1:A:112:GLY:N	2.17	0.57
1:A:545:ASN:O	1:A:549:ASP:HB2	2.04	0.57
1:A:282:LEU:HD21	1:A:295:LEU:HA	1.86	0.57
1:A:148:VAL:O	1:A:150:PRO:HD3	2.05	0.57
1:A:24:TRP:CE3	1:A:25:PRO:HG3	2.40	0.57
1:A:175:ASN:HB3	1:A:178:ILE:HD12	1.86	0.57
1:A:76:ASP:OD2	1:A:78:ARG:HG3	2.03	0.57
2:B:175:ASN:H	2:B:176:PRO:HD3	1.70	0.57
1:A:27:THR:HG22	1:A:28:GLU:N	2.20	0.57
2:B:7:THR:CG2	2:B:119:PRO:HG2	2.35	0.57
2:B:79:GLU:HA	2:B:79:GLU:OE1	2.04	0.57
1:A:131:THR:HG23	1:A:143:ARG:HG3	1.86	0.56
2:B:30:LYS:NZ	2:B:404:GLU:OE2	2.34	0.56
1:A:13:LYS:HE3	1:A:84:THR:O	2.05	0.56
2:B:103:LYS:CE	2:B:179:VAL:HG23	2.27	0.56
1:A:50:ILE:HD13	1:A:145:GLN:HB3	1.86	0.56
2:B:84:THR:HB	2:B:154:LYS:HE2	1.87	0.56
1:A:60:VAL:C	1:A:61:PHE:HD2	2.08	0.56
1:A:225:PRO:HG3	1:A:227:PHE:CZ	2.41	0.56
2:B:376:THR:HG23	2:B:387:PRO:HD2	1.88	0.56
2:B:354:TYR:HB3	2:B:356:ARG:HH12	1.71	0.56
1:A:335:GLY:O	1:A:356:ARG:HA	2.06	0.56
1:A:139:THR:HB	1:A:140:PRO:HD2	1.86	0.56
1:A:320:ASP:OD2	1:A:323:LYS:HG3	2.06	0.56
1:A:334:GLN:OE1	1:A:356:ARG:NH2	2.39	0.56
2:B:195:ILE:HD11	2:B:199:ARG:NE	2.21	0.55
2:B:361:HIS:O	2:B:363:ASN:N	2.38	0.55
2:B:151:GLN:HB3	2:B:185:ASP:OD1	2.06	0.55
1:A:46:LYS:O	1:A:147:ASN:HB3	2.07	0.55
1:A:101:LYS:HE2	1:A:321:PRO:HG3	1.88	0.55
1:A:111:VAL:HG22	1:A:185:ASP:O	2.07	0.55
1:A:114:ALA:HB1	1:A:160:PHE:CE2	2.41	0.55
1:A:542:ILE:HD11	2:B:261:VAL:HG11	1.89	0.55
2:B:64:LYS:HE3	2:B:71:TRP:CE2	2.41	0.55
1:A:181:TYR:CE1	1:A:183:TYR:HB2	2.41	0.55
2:B:423:VAL:O	2:B:427:TYR:HD2	1.89	0.55

*Continued on next page...*

*Continued from previous page...*

Atom-1	Atom-2	Interatomic distance (Å)	Clash overlap (Å)
1:A:104:LYS:HG3	1:A:192:ASP:HA	1.90	0.54
1:A:110:ASP:HB2	1:A:223:LYS:CE	2.37	0.54
1:A:24:TRP:CE3	1:A:25:PRO:HD3	2.42	0.54
2:B:103:LYS:HE3	2:B:179:VAL:CG2	2.28	0.54
1:A:28:GLU:O	1:A:32:LYS:HG3	2.07	0.54
1:A:91:GLN:HE21	1:A:93:GLY:HA3	1.70	0.54
1:A:110:ASP:O	1:A:217:PRO:CD	2.55	0.54
1:A:486:LEU:HD12	1:A:521:ILE:HG23	1.90	0.54
1:A:6:GLU:OE2	1:A:6:GLU:HA	2.08	0.54
1:A:542:ILE:HD11	2:B:261:VAL:CG1	2.39	0.54
2:B:120:LEU:HD21	2:B:124:PHE:HD2	1.71	0.54
2:B:380:ILE:O	2:B:384:GLY:HA2	2.08	0.54
1:A:57:ASN:ND2	1:A:58:THR:N	2.57	0.53
1:A:59:PRO:HB2	1:A:61:PHE:HE2	1.74	0.53
1:A:139:THR:CG2	1:A:140:PRO:HD3	2.30	0.53
1:A:445:ALA:N	1:A:477:THR:HG21	2.24	0.53
2:B:100:LEU:N	2:B:100:LEU:HD23	2.24	0.53
2:B:277:ARG:CZ	2:B:281:LYS:NZ	2.72	0.53
1:A:445:ALA:H	1:A:477:THR:HG21	1.73	0.53
1:A:139:THR:CG2	1:A:140:PRO:CD	2.86	0.53
1:A:405:TYR:HE2	1:A:407:GLN:HB3	1.72	0.53
2:B:354:TYR:CZ	2:B:374:LYS:HD3	2.43	0.53
2:B:34:LEU:HD21	2:B:62:ALA:HB2	1.89	0.53
1:A:131:THR:OG1	1:A:143:ARG:HG2	2.09	0.53
2:B:184:VAL:CG1	2:B:185:ASP:N	2.57	0.53
1:A:120:LEU:HD12	1:A:121:ASP:N	2.21	0.53
1:A:174:GLN:C	1:A:176:PRO:HD3	2.30	0.53
1:A:296:THR:HG23	1:A:299:ALA:CB	2.39	0.52
1:A:552:VAL:HG23	1:A:552:VAL:O	2.09	0.52
2:B:116:PHE:CZ	2:B:151:GLN:HG3	2.44	0.52
2:B:135:ILE:O	2:B:138:GLU:HG2	2.09	0.52
2:B:136:ASN:O	2:B:137:ASN:HB2	2.08	0.52
1:A:450:THR:CB	1:A:452:LEU:HD13	2.40	0.52
1:A:476:LYS:O	1:A:480:GLN:HB2	2.10	0.52
2:B:277:ARG:NH2	2:B:281:LYS:NZ	2.56	0.52
1:A:139:THR:CB	1:A:140:PRO:CD	2.87	0.52
1:A:56:TYR:O	1:A:143:ARG:NH2	2.43	0.52
1:A:106:VAL:CG1	1:A:236:PRO:HB3	2.40	0.52
1:A:270:ILE:O	1:A:272:PRO:HD3	2.10	0.52
2:B:106:VAL:O	2:B:234:LEU:HB2	2.09	0.52
1:A:356:ARG:CG	1:A:356:ARG:O	2.58	0.52

*Continued on next page...*

*Continued from previous page...*

Atom-1	Atom-2	Interatomic distance (Å)	Clash overlap (Å)
1:A:50:ILE:HG23	1:A:145:GLN:HG2	1.92	0.52
2:B:178:ILE:HG12	2:B:191:SER:HB3	1.90	0.52
2:B:139:THR:HB	2:B:140:PRO:CD	2.40	0.51
2:B:344:GLU:HG3	2:B:345:PRO:HD2	1.92	0.51
1:A:241:VAL:CG2	1:A:314:VAL:HG13	2.40	0.51
1:A:503:LEU:O	1:A:507:GLN:HB2	2.11	0.51
1:A:112:GLY:C	1:A:114:ALA:N	2.63	0.51
2:B:100:LEU:HA	2:B:103:LYS:HG2	1.91	0.51
1:A:463:ARG:HG2	1:A:464:GLN:N	2.26	0.51
2:B:195:ILE:HD11	2:B:199:ARG:HE	1.76	0.51
1:A:497:THR:O	1:A:535:TRP:HA	2.10	0.51
2:B:35:VAL:CG2	2:B:36:GLU:N	2.74	0.51
2:B:67:ASN:N	2:B:67:ASN:OD1	2.43	0.51
1:A:333:GLY:H	1:A:336:GLN:HB2	1.75	0.51
1:A:240:THR:HG23	1:A:315:HIS:HB3	1.89	0.51
1:A:395:LYS:HD3	1:A:414:TRP:CZ2	2.45	0.51
2:B:332:GLN:HG3	2:B:338:THR:HG23	1.93	0.51
2:B:372:VAL:HG13	2:B:389:PHE:CD2	2.45	0.51
1:A:420:PRO:HA	1:A:421:PRO:C	2.31	0.51
2:B:277:ARG:CZ	2:B:281:LYS:HZ3	2.25	0.50
1:A:96:HIS:HD2	1:A:98:ALA:H	1.58	0.50
2:B:175:ASN:HD21	2:B:201:LYS:CE	2.22	0.50
2:B:297:GLU:O	2:B:300:GLU:HB2	2.12	0.50
1:A:457:TYR:CE2	1:A:465:LYS:HB3	2.47	0.50
2:B:161:GLN:OE1	2:B:161:GLN:HA	2.12	0.50
2:B:266:TRP:CE2	2:B:426:TRP:CD1	3.00	0.50
1:A:112:GLY:C	1:A:114:ALA:H	2.14	0.50
2:B:282:LEU:HD21	2:B:296:THR:CG2	2.40	0.50
2:B:13:LYS:HB2	2:B:16:MET:HG3	1.94	0.50
2:B:183:TYR:HB3	2:B:188:TYR:HE1	1.76	0.49
1:A:131:THR:HG22	1:A:132:ILE:N	2.27	0.49
1:A:246:LEU:HB2	1:A:307:ARG:NH1	2.27	0.49
1:A:300:GLU:OE2	1:A:300:GLU:HA	2.11	0.49
2:B:30:LYS:HZ2	2:B:404:GLU:CD	2.15	0.49
1:A:88:TRP:HA	1:A:88:TRP:CE3	2.47	0.49
1:A:1:PRO:O	1:A:117:SER:HB3	2.12	0.49
1:A:418:ASN:C	1:A:420:PRO:HD3	2.33	0.49
1:A:491:LEU:HD23	1:A:529:GLU:OE1	2.13	0.49
2:B:35:VAL:HG23	2:B:36:GLU:N	2.27	0.49
1:A:170:PRO:HG2	1:A:171:PHE:N	2.26	0.49
2:B:63:ILE:HD13	2:B:63:ILE:H	1.76	0.49

*Continued on next page...*

*Continued from previous page...*

Atom-1	Atom-2	Interatomic distance (Å)	Clash overlap (Å)
1:A:100:LEU:HB2	1:A:318:TYR:CD1	2.47	0.49
1:A:232:TYR:N	1:A:232:TYR:CD1	2.81	0.49
1:A:17:ASP:O	1:A:83:ARG:NE	2.40	0.49
2:B:65:LYS:C	2:B:67:ASN:N	2.64	0.49
1:A:283:LEU:O	1:A:286:THR:HG23	2.13	0.49
1:A:329:ILE:O	1:A:392:PRO:HD3	2.13	0.49
2:B:341:ILE:N	2:B:341:ILE:CD1	2.76	0.49
2:B:422:LEU:O	2:B:424:LYS:N	2.46	0.49
1:A:218:ASP:OD2	1:A:218:ASP:N	2.46	0.49
1:A:402:TRP:CZ2	2:B:362:THR:CG2	2.96	0.49
2:B:293:ILE:HG23	2:B:294:PRO:HD2	1.94	0.49
2:B:57:ASN:HD22	2:B:143:ARG:HH11	1.60	0.48
1:A:142:ILE:HG22	1:A:144:TYR:CE1	2.48	0.48
2:B:257:ILE:HB	2:B:283:LEU:HD11	1.95	0.48
2:B:308:GLU:HA	2:B:311:LYS:HE2	1.94	0.48
1:A:356:ARG:O	1:A:356:ARG:HG3	2.13	0.48
1:A:34:LEU:HB3	1:A:132:ILE:HD12	1.94	0.48
1:A:139:THR:HB	1:A:140:PRO:CD	2.43	0.48
2:B:205:LEU:HD23	2:B:205:LEU:O	2.14	0.48
1:A:453:GLY:O	1:A:469:LEU:N	2.42	0.48
2:B:97:PRO:HG2	2:B:100:LEU:CD2	2.43	0.48
2:B:163:SER:O	2:B:167:ILE:HG13	2.14	0.48
2:B:171:PHE:HA	2:B:174:GLN:HG2	1.96	0.48
1:A:226:PRO:HB3	1:A:235:HIS:CD2	2.49	0.48
2:B:332:GLN:CG	2:B:338:THR:HG23	2.43	0.48
1:A:220:LYS:O	1:A:221:HIS:HD2	1.97	0.48
1:A:544:GLY:HA2	1:A:547:GLN:HG2	1.96	0.48
2:B:77:PHE:CD2	2:B:80:LEU:HD23	2.48	0.48
1:A:132:ILE:CG1	1:A:142:ILE:HB	2.44	0.47
1:A:96:HIS:CD2	1:A:98:ALA:H	2.32	0.47
1:A:153:TRP:HB3	1:A:156:SER:OG	2.13	0.47
2:B:57:ASN:ND2	2:B:131:THR:OG1	2.46	0.47
2:B:422:LEU:HD22	2:B:426:TRP:HZ2	1.77	0.47
2:B:23:GLN:HG3	2:B:24:TRP:O	2.14	0.47
2:B:166:LYS:O	2:B:168:LEU:N	2.47	0.47
1:A:492:GLU:HG2	1:A:530:LYS:HB2	1.95	0.47
2:B:39:THR:O	2:B:43:LYS:HG3	2.13	0.47
1:A:115:TYR:CE1	1:A:116:PHE:HD1	2.32	0.47
2:B:287:LYS:H	2:B:287:LYS:HG2	1.45	0.47
1:A:24:TRP:CB	1:A:25:PRO:HD3	2.43	0.47
1:A:444:GLY:HA3	1:A:477:THR:HG22	1.97	0.47

*Continued on next page...*



*Continued from previous page...*

Atom-1	Atom-2	Interatomic distance (Å)	Clash overlap (Å)
1:A:479:LEU:HD11	1:A:501:TYR:HE2	1.80	0.47
1:A:141:GLY:C	1:A:142:ILE:HD12	2.35	0.47
1:A:58:THR:HG21	1:A:76:ASP:O	2.15	0.47
1:A:252:TRP:CD1	1:A:295:LEU:CD1	2.98	0.47
1:A:252:TRP:CD1	1:A:295:LEU:HD13	2.50	0.47
2:B:125:ARG:HG2	2:B:146:TYR:O	2.15	0.47
2:B:402:TRP:CG	2:B:403:THR:N	2.83	0.47
1:A:145:GLN:HG3	1:A:145:GLN:O	2.14	0.46
1:A:241:VAL:HG21	1:A:270:ILE:HG12	1.97	0.46
2:B:47:ILE:HD12	2:B:144:TYR:CG	2.49	0.46
1:A:57:ASN:CG	1:A:58:THR:N	2.68	0.46
2:B:169:GLU:HA	2:B:172:ARG:HB2	1.97	0.46
2:B:380:ILE:O	2:B:384:GLY:CA	2.63	0.46
1:A:402:TRP:CZ2	2:B:362:THR:HG23	2.50	0.46
1:A:146:TYR:CD1	1:A:150:PRO:HB3	2.50	0.46
1:A:245:VAL:HG12	1:A:246:LEU:N	2.30	0.46
2:B:135:ILE:C	2:B:137:ASN:H	2.18	0.46
2:B:178:ILE:HG12	2:B:191:SER:CB	2.45	0.46
1:A:108:VAL:HG12	1:A:227:PHE:CZ	2.51	0.46
2:B:202:ILE:O	2:B:205:LEU:N	2.49	0.46
1:A:60:VAL:C	1:A:61:PHE:CD2	2.89	0.46
2:B:111:VAL:O	2:B:112:GLY:C	2.54	0.46
1:A:91:GLN:NE2	1:A:93:GLY:CA	2.74	0.46
1:A:170:PRO:CG	1:A:171:PHE:H	2.27	0.46
1:A:175:ASN:OD1	1:A:201:LYS:HE3	2.15	0.46
2:B:194:GLU:OE2	2:B:195:ILE:HG22	2.16	0.46
2:B:393:ILE:HG12	2:B:394:GLN:N	2.30	0.46
2:B:426:TRP:HA	2:B:426:TRP:CE3	2.51	0.46
1:A:281:LYS:CG	1:A:284:ARG:NH1	2.74	0.46
2:B:157:PRO:HG2	2:B:184:VAL:HA	1.97	0.46
1:A:363:ASN:HB2	1:A:511:ASP:OD2	2.16	0.45
1:A:464:GLN:HG2	1:A:465:LYS:N	2.32	0.45
2:B:193:LEU:HD12	2:B:193:LEU:H	1.81	0.45
2:B:30:LYS:NZ	2:B:404:GLU:CD	2.70	0.45
2:B:183:TYR:O	2:B:184:VAL:HB	2.17	0.45
2:B:115:TYR:OH	2:B:157:PRO:HG3	2.17	0.45
2:B:175:ASN:ND2	2:B:201:LYS:HZ2	2.08	0.45
1:A:202:ILE:O	1:A:206:ARG:HG3	2.17	0.45
2:B:195:ILE:HG23	2:B:196:GLY:N	2.31	0.45
2:B:297:GLU:HA	2:B:300:GLU:HG3	1.98	0.45
1:A:125:ARG:HD3	1:A:147:ASN:HA	1.98	0.45

*Continued on next page...*

*Continued from previous page...*

Atom-1	Atom-2	Interatomic distance (Å)	Clash overlap (Å)
2:B:78:ARG:HD3	2:B:411:ILE:HG22	1.98	0.45
2:B:380:ILE:O	2:B:384:GLY:N	2.49	0.45
1:A:396:GLU:CD	1:A:396:GLU:N	2.70	0.45
2:B:180:ILE:HD12	2:B:180:ILE:N	2.32	0.45
2:B:266:TRP:CD2	2:B:426:TRP:CD1	3.05	0.45
1:A:450:THR:O	1:A:451:LYS:HB2	2.16	0.44
1:A:113:ASP:OD2	1:A:215:TYR:HB3	2.17	0.44
1:A:26:LEU:CD2	1:A:30:LYS:NZ	2.79	0.44
2:B:266:TRP:CH2	2:B:426:TRP:HB3	2.52	0.44
2:B:319:TYR:CE1	2:B:321:PRO:HG3	2.53	0.44
2:B:423:VAL:O	2:B:427:TYR:CD2	2.70	0.44
1:A:235:HIS:HB3	1:A:236:PRO:CD	2.48	0.44
1:A:261:VAL:O	1:A:265:ASN:HB2	2.18	0.44
2:B:361:HIS:CE1	2:B:366:LYS:NZ	2.86	0.44
1:A:177:ASP:N	1:A:177:ASP:OD2	2.51	0.44
1:A:329:ILE:HG22	1:A:330:GLN:N	2.32	0.44
2:B:424:LYS:C	2:B:424:LYS:HD2	2.37	0.44
1:A:252:TRP:HB3	1:A:257:ILE:HD11	2.00	0.44
1:A:377:THR:HG22	1:A:378:GLU:N	2.33	0.44
2:B:60:VAL:HG11	2:B:130:PHE:CD1	2.52	0.44
2:B:135:ILE:C	2:B:137:ASN:N	2.71	0.44
1:A:48:SER:O	1:A:144:TYR:HB3	2.18	0.44
1:A:26:LEU:HD13	1:A:30:LYS:HB3	2.00	0.43
1:A:427:TYR:OH	1:A:509:GLN:HA	2.18	0.43
2:B:311:LYS:O	2:B:312:GLU:HG3	2.18	0.43
2:B:426:TRP:HA	2:B:426:TRP:HE3	1.81	0.43
1:A:26:LEU:HD23	1:A:26:LEU:HA	1.86	0.43
2:B:205:LEU:HD23	2:B:205:LEU:C	2.37	0.43
2:B:373:GLN:O	2:B:374:LYS:C	2.57	0.43
1:A:58:THR:CG2	1:A:76:ASP:O	2.66	0.43
1:A:498:ASP:HA	1:A:536:VAL:O	2.18	0.43
2:B:47:ILE:HD12	2:B:144:TYR:CD1	2.54	0.43
1:A:386:THR:HA	1:A:387:PRO:HD3	1.77	0.43
1:A:125:ARG:HG2	1:A:146:TYR:O	2.18	0.43
1:A:360:ALA:HB1	1:A:361:HIS:CE1	2.53	0.43
1:A:99:GLY:HA3	2:B:136:ASN:ND2	2.34	0.43
2:B:77:PHE:O	2:B:78:ARG:C	2.57	0.43
1:A:78:ARG:O	1:A:82:LYS:HG3	2.19	0.43
2:B:28:GLU:HG3	2:B:135:ILE:CD1	2.49	0.43
2:B:263:LYS:HB2	2:B:426:TRP:CZ3	2.54	0.43
2:B:326:ILE:O	2:B:341:ILE:HA	2.19	0.43

*Continued on next page...*

*Continued from previous page...*

Atom-1	Atom-2	Interatomic distance (Å)	Clash overlap (Å)
2:B:426:TRP:CE3	2:B:426:TRP:CA	3.01	0.43
2:B:104:LYS:HB3	2:B:192:ASP:HA	2.01	0.42
1:A:244:ILE:HD12	1:A:245:VAL:H	1.84	0.42
1:A:248:GLU:O	1:A:249:LYS:HG3	2.20	0.42
1:A:130:PHE:CE2	1:A:144:TYR:HB2	2.55	0.42
1:A:131:THR:OG1	1:A:143:ARG:CG	2.67	0.42
1:A:244:ILE:CG2	1:A:310:LEU:HD22	2.49	0.42
2:B:16:MET:HE3	2:B:83:ARG:HA	2.01	0.42
1:A:39:THR:O	1:A:42:GLU:HB3	2.20	0.42
1:A:463:ARG:HG2	1:A:464:GLN:H	1.85	0.42
1:A:210:LEU:HD12	1:A:210:LEU:HA	1.85	0.42
1:A:411:ILE:HG22	1:A:412:PRO:O	2.19	0.42
2:B:40:GLU:HG3	4:B:1012:HOH:O	2.19	0.42
2:B:137:ASN:O	2:B:138:GLU:C	2.58	0.42
2:B:298:GLU:OE2	2:B:298:GLU:N	2.53	0.42
1:A:112:GLY:O	1:A:114:ALA:N	2.53	0.42
1:A:153:TRP:CG	1:A:154:LYS:N	2.88	0.42
2:B:154:LYS:O	2:B:157:PRO:HD2	2.20	0.42
1:A:229:TRP:O	1:A:231:GLY:N	2.53	0.42
1:A:293:ILE:N	1:A:293:ILE:CD1	2.80	0.42
2:B:168:LEU:O	2:B:170:PRO:N	2.53	0.42
1:A:24:TRP:CE3	1:A:25:PRO:CG	3.03	0.42
1:A:260:LEU:CD2	1:A:279:LEU:HD21	2.50	0.42
2:B:355:ALA:C	2:B:356:ARG:HD2	2.38	0.42
1:A:118:VAL:CG1	1:A:119:PRO:HD2	2.50	0.41
1:A:180:ILE:HA	1:A:188:TYR:O	2.19	0.41
2:B:184:VAL:CG1	2:B:185:ASP:H	2.02	0.41
1:A:345:PRO:HB2	1:A:346:PHE:CD1	2.55	0.41
1:A:451:LYS:HB3	1:A:471:ASP:HA	2.02	0.41
2:B:168:LEU:C	2:B:170:PRO:HD2	2.40	0.41
1:A:132:ILE:CG2	1:A:142:ILE:HD13	2.50	0.41
2:B:319:TYR:CZ	2:B:321:PRO:HA	2.55	0.41
1:A:138:GLU:HB2	1:A:139:THR:H	1.59	0.41
1:A:516:GLU:O	1:A:520:GLN:HG3	2.20	0.41
1:A:164:MET:O	1:A:168:LEU:HG	2.21	0.41
1:A:304:ALA:O	1:A:307:ARG:HB2	2.21	0.41
2:B:254:VAL:HG22	2:B:293:ILE:HD11	2.02	0.41
2:B:270:ILE:HG22	2:B:271:TYR:CD2	2.56	0.41
1:A:345:PRO:C	1:A:346:PHE:HD1	2.24	0.41
2:B:296:THR:O	2:B:299:ALA:N	2.52	0.41
1:A:106:VAL:HB	1:A:190:GLY:CA	2.51	0.41

*Continued on next page...*

Continued from previous page...

Atom-1	Atom-2	Interatomic distance (Å)	Clash overlap (Å)
2:B:168:LEU:O	2:B:169:GLU:C	2.59	0.41
1:A:7:THR:OG1	1:A:122:GLU:OE2	2.31	0.41
1:A:34:LEU:HD21	1:A:61:PHE:O	2.21	0.41
1:A:103:LYS:HD3	1:A:103:LYS:HA	1.87	0.41
1:A:244:ILE:HG23	1:A:310:LEU:HD22	2.03	0.41
1:A:465:LYS:CG	1:A:466:VAL:N	2.84	0.41
2:B:176:PRO:C	2:B:178:ILE:H	2.24	0.41
2:B:193:LEU:HB3	2:B:197:GLN:HB2	2.03	0.41
2:B:422:LEU:C	2:B:424:LYS:N	2.73	0.41
1:A:58:THR:HG22	1:A:59:PRO:HD2	2.01	0.41
1:A:229:TRP:O	1:A:230:MET:C	2.60	0.41
1:A:345:PRO:HB2	1:A:346:PHE:HD1	1.85	0.41
1:A:84:THR:O	1:A:154:LYS:NZ	2.46	0.40
1:A:358:ARG:H	1:A:358:ARG:HG2	1.69	0.40
2:B:57:ASN:HD22	2:B:143:ARG:NH1	2.18	0.40
2:B:242:GLN:HA	2:B:243:PRO:HD3	1.84	0.40
1:A:170:PRO:C	1:A:174:GLN:HE21	2.24	0.40
1:A:208:HIS:O	1:A:211:ARG:HB3	2.21	0.40
2:B:31:ILE:CD1	2:B:133:PRO:HG2	2.50	0.40
1:A:84:THR:HB	1:A:154:LYS:HD3	2.03	0.40
1:A:274:ILE:HD13	1:A:274:ILE:HA	1.93	0.40
2:B:7:THR:HG22	2:B:119:PRO:HG2	2.02	0.40
2:B:120:LEU:HD21	2:B:124:PHE:CD2	2.53	0.40

There are no symmetry-related clashes.

## 5.3 Torsion angles [i](#)

### 5.3.1 Protein backbone [i](#)

In the following table, the Percentiles column shows the percent Ramachandran outliers of the chain as a percentile score with respect to all X-ray entries followed by that with respect to entries of similar resolution.

The Analysed column shows the number of residues for which the backbone conformation was analysed, and the total number of residues.

Mol	Chain	Analysed	Favoured	Allowed	Outliers	Percentiles
1	A	536/560 (96%)	460 (86%)	59 (11%)	17 (3%)	<b>4</b> <b>13</b>
2	B	389/440 (88%)	324 (83%)	49 (13%)	16 (4%)	<b>3</b> <b>9</b>

Continued on next page...

*Continued from previous page...*

Mol	Chain	Analysed	Favoured	Allowed	Outliers	Percentiles
All	All	925/1000 (92%)	784 (85%)	108 (12%)	33 (4%)	<b>3</b> <b>11</b>

All (33) Ramachandran outliers are listed below:

Mol	Chain	Res	Type
1	A	25	PRO
1	A	114	ALA
1	A	138	GLU
1	A	230	MET
1	A	543	GLY
2	B	103	LYS
2	B	358	ARG
1	A	139	THR
2	B	85	GLN
2	B	166	LYS
2	B	167	ILE
2	B	172	ARG
2	B	176	PRO
1	A	184	VAL
1	A	471	ASP
2	B	184	VAL
1	A	491	LEU
2	B	66	LYS
2	B	173	LYS
2	B	423	VAL
1	A	85	GLN
1	A	116	PHE
1	A	140	PRO
1	A	157	PRO
2	B	158	ALA
2	B	169	GLU
2	B	170	PRO
2	B	175	ASN
2	B	195	ILE
1	A	345	PRO
1	A	170	PRO
1	A	52	PRO
1	A	542	ILE

### 5.3.2 Protein sidechains [i](#)

In the following table, the Percentiles column shows the percent sidechain outliers of the chain as a percentile score with respect to all X-ray entries followed by that with respect to entries of similar resolution.

The Analysed column shows the number of residues for which the sidechain conformation was analysed, and the total number of residues.

Mol	Chain	Analysed	Rotameric	Outliers	Percentiles	
1	A	483/499 (97%)	434 (90%)	49 (10%)	7	22
2	B	360/400 (90%)	329 (91%)	31 (9%)	10	30
All	All	843/899 (94%)	763 (90%)	80 (10%)	8	25

All (80) residues with a non-rotameric sidechain are listed below:

Mol	Chain	Res	Type
1	A	6	GLU
1	A	16	MET
1	A	22	LYS
1	A	24	TRP
1	A	29	GLU
1	A	86	ASP
1	A	90	VAL
1	A	91	GLN
1	A	94	ILE
1	A	105	SER
1	A	106	VAL
1	A	107	THR
1	A	108	VAL
1	A	113	ASP
1	A	116	PHE
1	A	137	ASN
1	A	139	THR
1	A	140	PRO
1	A	148	VAL
1	A	161	GLN
1	A	205	LEU
1	A	214	LEU
1	A	240	THR
1	A	250	ASP
1	A	270	ILE
1	A	277	ARG
1	A	295	LEU

*Continued on next page...*

*Continued from previous page...*

<b>Mol</b>	<b>Chain</b>	<b>Res</b>	<b>Type</b>
1	A	296	THR
1	A	297	GLU
1	A	301	LEU
1	A	303	LEU
1	A	332	GLN
1	A	340	GLN
1	A	356	ARG
1	A	361	HIS
1	A	368	LEU
1	A	369	THR
1	A	377	THR
1	A	386	THR
1	A	402	TRP
1	A	424	LYS
1	A	431	LYS
1	A	473	THR
1	A	474	ASN
1	A	493	VAL
1	A	496	VAL
1	A	514	GLU
1	A	523	GLU
1	A	548	VAL
2	B	8	VAL
2	B	24	TRP
2	B	40	GLU
2	B	55	PRO
2	B	63	ILE
2	B	66	LYS
2	B	67	ASN
2	B	69	THR
2	B	70	ARG
2	B	79	GLU
2	B	86	ASP
2	B	87	PHE
2	B	123	ASP
2	B	161	GLN
2	B	162	SER
2	B	164	MET
2	B	206	ARG
2	B	210	LEU
2	B	250	ASP
2	B	263	LYS

*Continued on next page...*

*Continued from previous page...*

Mol	Chain	Res	Type
2	B	277	ARG
2	B	287	LYS
2	B	289	LEU
2	B	344	GLU
2	B	350	LYS
2	B	356	ARG
2	B	368	LEU
2	B	399	GLU
2	B	418	ASN
2	B	424	LYS
2	B	426	TRP

Sometimes sidechains can be flipped to improve hydrogen bonding and reduce clashes. All (21) such sidechains are listed below:

Mol	Chain	Res	Type
1	A	137	ASN
1	A	161	GLN
1	A	174	GLN
1	A	221	HIS
1	A	278	GLN
1	A	330	GLN
1	A	464	GLN
1	A	507	GLN
1	A	547	GLN
2	B	57	ASN
2	B	85	GLN
2	B	147	ASN
2	B	151	GLN
2	B	174	GLN
2	B	175	ASN
2	B	207	GLN
2	B	242	GLN
2	B	278	GLN
2	B	336	GLN
2	B	361	HIS
2	B	407	GLN

### 5.3.3 RNA

There are no RNA molecules in this entry.



## 5.4 Non-standard residues in protein, DNA, RNA chains [i](#)

1 non-standard protein/DNA/RNA residue is modelled in this entry.

In the following table, the Counts columns list the number of bonds (or angles) for which Mogul statistics could be retrieved, the number of bonds (or angles) that are observed in the model and the number of bonds (or angles) that are defined in the Chemical Component Dictionary. The Link column lists molecule types, if any, to which the group is linked. The Z score for a bond length (or angle) is the number of standard deviations the observed value is removed from the expected value. A bond length (or angle) with  $|Z| > 2$  is considered an outlier worth inspection. RMSZ is the root-mean-square of all Z scores of the bond lengths (or angles).

Mol	Type	Chain	Res	Link	Bond lengths			Bond angles		
					Counts	RMSZ	# Z  > 2	Counts	RMSZ	# Z  > 2
1	CSD	A	280	1	3,7,8	1.25	0	1,8,10	11.21	1 (100%)

In the following table, the Chirals column lists the number of chiral outliers, the number of chiral centers analysed, the number of these observed in the model and the number defined in the Chemical Component Dictionary. Similar counts are reported in the Torsion and Rings columns. '-' means no outliers of that kind were identified.

Mol	Type	Chain	Res	Link	Chirals	Torsions	Rings
1	CSD	A	280	1	-	2/2/6/8	-

There are no bond length outliers.

All (1) bond angle outliers are listed below:

Mol	Chain	Res	Type	Atoms	Z	Observed(°)	Ideal(°)
1	A	280	CSD	OD1-SG-CB	11.21	126.86	105.54

There are no chirality outliers.

All (2) torsion outliers are listed below:

Mol	Chain	Res	Type	Atoms
1	A	280	CSD	N-CA-CB-SG
1	A	280	CSD	CA-CB-SG-OD1

There are no ring outliers.

No monomer is involved in short contacts.

## 5.5 Carbohydrates [i](#)

There are no monosaccharides in this entry.

## 5.6 Ligand geometry [i](#)

1 ligand is modelled in this entry.

In the following table, the Counts columns list the number of bonds (or angles) for which Mogul statistics could be retrieved, the number of bonds (or angles) that are observed in the model and the number of bonds (or angles) that are defined in the Chemical Component Dictionary. The Link column lists molecule types, if any, to which the group is linked. The Z score for a bond length (or angle) is the number of standard deviations the observed value is removed from the expected value. A bond length (or angle) with  $|Z| > 2$  is considered an outlier worth inspection. RMSZ is the root-mean-square of all Z scores of the bond lengths (or angles).

Mol	Type	Chain	Res	Link	Bond lengths			Bond angles		
					Counts	RMSZ	# Z  > 2	Counts	RMSZ	# Z  > 2
3	NVP	A	999	-	15,23,23	1.32	2 (13%)	13,34,34	1.13	0

In the following table, the Chirals column lists the number of chiral outliers, the number of chiral centers analysed, the number of these observed in the model and the number defined in the Chemical Component Dictionary. Similar counts are reported in the Torsion and Rings columns. '-' means no outliers of that kind were identified.

Mol	Type	Chain	Res	Link	Chirals	Torsions	Rings
3	NVP	A	999	-	-	0/0/6/6	0/3/4/4

All (2) bond length outliers are listed below:

Mol	Chain	Res	Type	Atoms	Z	Observed(Å)	Ideal(Å)
3	A	999	NVP	C10-C15	2.19	1.43	1.41
3	A	999	NVP	C13-N14	2.03	1.36	1.32

There are no bond angle outliers.

There are no chirality outliers.

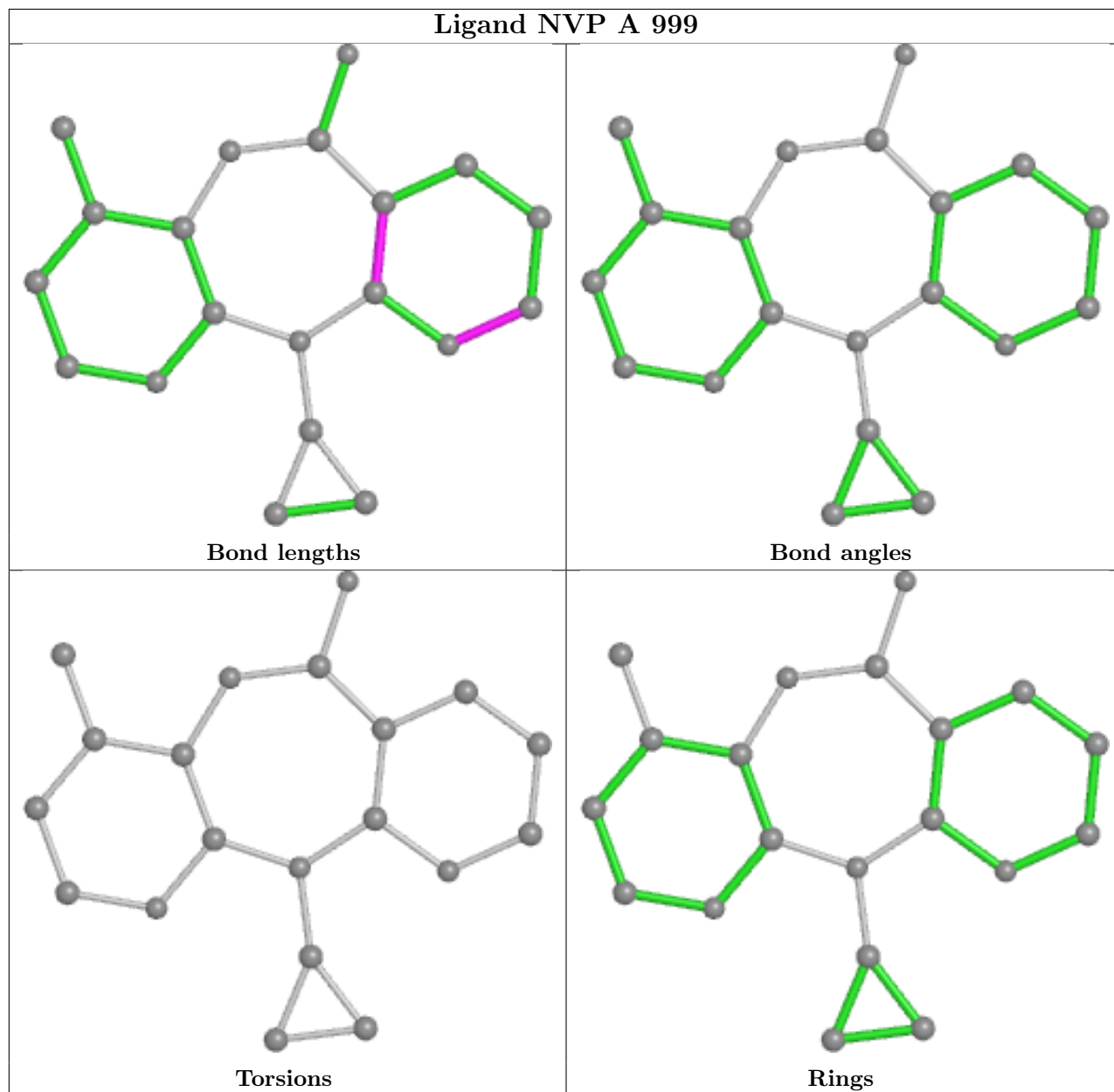
There are no torsion outliers.

There are no ring outliers.

No monomer is involved in short contacts.

The following is a two-dimensional graphical depiction of Mogul quality analysis of bond lengths, bond angles, torsion angles, and ring geometry for all instances of the Ligand of Interest. In addition, ligands with molecular weight > 250 and outliers as shown on the validation Tables will

also be included. For torsion angles, if less than 5% of the Mogul distribution of torsion angles is within 10 degrees of the torsion angle in question, then that torsion angle is considered an outlier. Any bond that is central to one or more torsion angles identified as an outlier by Mogul will be highlighted in the graph. For rings, the root-mean-square deviation (RMSD) between the ring in question and similar rings identified by Mogul is calculated over all ring torsion angles. If the average RMSD is greater than 60 degrees and the minimal RMSD between the ring in question and any Mogul-identified rings is also greater than 60 degrees, then that ring is considered an outlier. The outliers are highlighted in purple. The color gray indicates Mogul did not find sufficient equivalents in the CSD to analyse the geometry.



## 5.7 Other polymers [i](#)

There are no such residues in this entry.

## 5.8 Polymer linkage issues

There are no chain breaks in this entry.

## 6 Fit of model and data

### 6.1 Protein, DNA and RNA chains

In the following table, the column labelled ‘#RSRZ > 2’ contains the number (and percentage) of RSRZ outliers, followed by percent RSRZ outliers for the chain as percentile scores relative to all X-ray entries and entries of similar resolution. The OWAB column contains the minimum, median, 95<sup>th</sup> percentile and maximum values of the occupancy-weighted average B-factor per residue. The column labelled ‘Q < 0.9’ lists the number of (and percentage) of residues with an average occupancy less than 0.9.

Mol	Chain	Analysed	<RSRZ>	#RSRZ>2	OWAB(Å <sup>2</sup> )	Q<0.9
1	A	542/560 (96%)	-0.17	21 (3%) 39 29	32, 71, 124, 150	0
2	B	395/440 (89%)	-0.31	8 (2%) 65 56	38, 71, 124, 147	0
All	All	937/1000 (93%)	-0.23	29 (3%) 49 39	32, 71, 124, 150	0

All (29) RSRZ outliers are listed below:

Mol	Chain	Res	Type	RSRZ
1	A	448	ARG	6.1
1	A	1	PRO	5.5
1	A	28	GLU	5.2
2	B	358	ARG	4.5
1	A	29	GLU	3.7
1	A	30	LYS	3.2
1	A	53	GLU	2.9
1	A	26	LEU	2.9
1	A	89	GLU	2.7
1	A	52	PRO	2.7
2	B	67	ASN	2.6
1	A	140	PRO	2.6
1	A	50	ILE	2.6
1	A	27	THR	2.5
2	B	173	LYS	2.5
1	A	22	LYS	2.5
1	A	92	LEU	2.5
2	B	237	ASP	2.4
1	A	24	TRP	2.4
2	B	151	GLN	2.4
1	A	34	LEU	2.3
1	A	359	GLY	2.3
1	A	54	ASN	2.2
2	B	240	THR	2.2

*Continued on next page...*

*Continued from previous page...*

Mol	Chain	Res	Type	RSRZ
2	B	195	ILE	2.2
1	A	63	ILE	2.1
2	B	152	GLY	2.1
1	A	147	ASN	2.1
1	A	550	LYS	2.1

## 6.2 Non-standard residues in protein, DNA, RNA chains [i](#)

In the following table, the Atoms column lists the number of modelled atoms in the group and the number defined in the chemical component dictionary. The B-factors column lists the minimum, median, 95<sup>th</sup> percentile and maximum values of B factors of atoms in the group. The column labelled 'Q< 0.9' lists the number of atoms with occupancy less than 0.9.

Mol	Type	Chain	Res	Atoms	RSCC	RSR	B-factors(Å <sup>2</sup> )	Q<0.9
1	CSD	A	280	8/9	0.95	0.11	53,62,80,84	0

## 6.3 Carbohydrates [i](#)

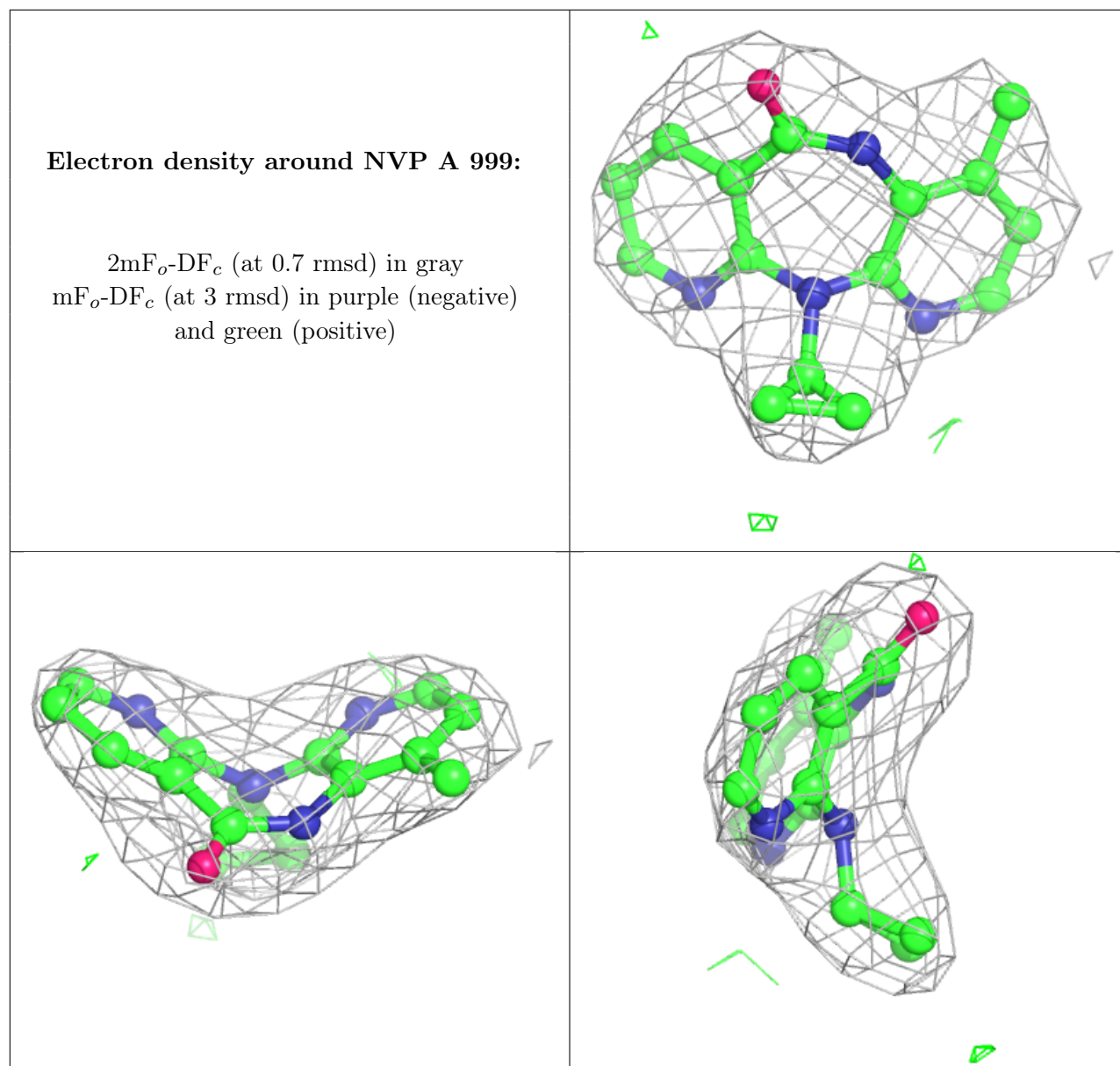
There are no monosaccharides in this entry.

## 6.4 Ligands [i](#)

In the following table, the Atoms column lists the number of modelled atoms in the group and the number defined in the chemical component dictionary. The B-factors column lists the minimum, median, 95<sup>th</sup> percentile and maximum values of B factors of atoms in the group. The column labelled 'Q< 0.9' lists the number of atoms with occupancy less than 0.9.

Mol	Type	Chain	Res	Atoms	RSCC	RSR	B-factors(Å <sup>2</sup> )	Q<0.9
3	NVP	A	999	20/20	0.97	0.20	37,50,65,67	0

The following is a graphical depiction of the model fit to experimental electron density of all instances of the Ligand of Interest. In addition, ligands with molecular weight > 250 and outliers as shown on the geometry validation Tables will also be included. Each fit is shown from different orientation to approximate a three-dimensional view.



## 6.5 Other polymers [i](#)

There are no such residues in this entry.