



Full wwPDB X-ray Structure Validation Report ⓘ

Oct 23, 2024 – 12:09 AM EDT

PDB ID : 4LXK
Title : Crystal Structure of Human Beta Secretase in Complex with compound 11d
Authors : Rondeau, J.M.; Bourgier, E.
Deposited on : 2013-07-30
Resolution : 2.05 Å(reported)

This is a Full wwPDB X-ray Structure Validation Report for a publicly released PDB entry.

We welcome your comments at validation@mail.wwpdb.org

A user guide is available at

<https://www.wwpdb.org/validation/2017/XrayValidationReportHelp>

with specific help available everywhere you see the ⓘ symbol.

The types of validation reports are described at

<http://www.wwpdb.org/validation/2017/FAQs#types>.

The following versions of software and data (see [references ⓘ](#)) were used in the production of this report:

MolProbity : 4.02b-467
Mogul : 2022.3.0, CSD as543be (2022)
Xtriage (Phenix) : 1.20.1
EDS : 3.0
buster-report : 1.1.7 (2018)
Percentile statistics : 20231227.v01 (using entries in the PDB archive December 27th 2023)
CCP4 : 9.0.003 (Gargrove)
Density-Fitness : 1.0.11
Ideal geometry (proteins) : Engh & Huber (2001)
Ideal geometry (DNA, RNA) : Parkinson et al. (1996)
Validation Pipeline (wwPDB-VP) : 2.39

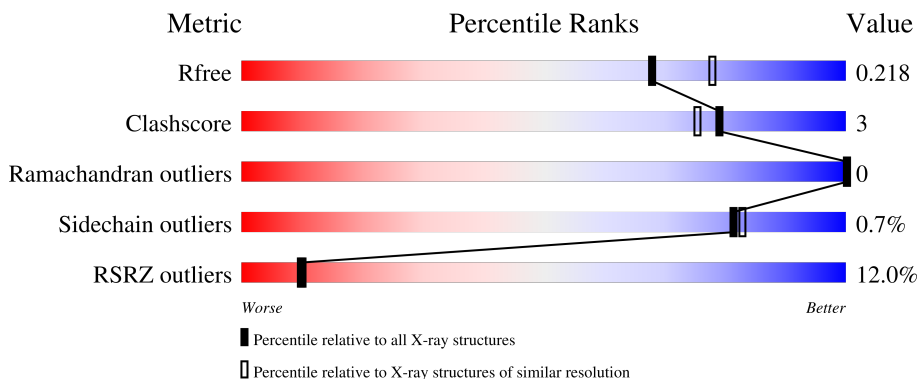
1 Overall quality at a glance

The following experimental techniques were used to determine the structure:

X-RAY DIFFRACTION

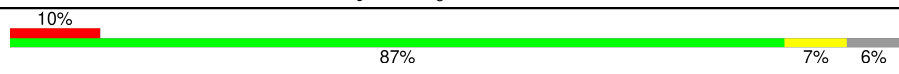
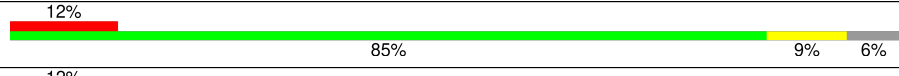
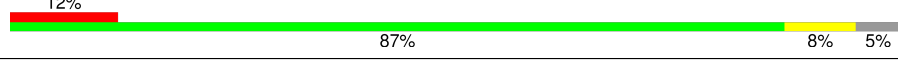
The reported resolution of this entry is 2.05 Å.

Percentile scores (ranging between 0-100) for global validation metrics of the entry are shown in the following graphic. The table shows the number of entries on which the scores are based.



Metric	Whole archive (#Entries)	Similar resolution (#Entries, resolution range(Å))
R_{free}	164625	2096 (2.04-2.04)
Clashscore	180529	2229 (2.04-2.04)
Ramachandran outliers	177936	2217 (2.04-2.04)
Sidechain outliers	177891	2217 (2.04-2.04)
RSRZ outliers	164620	2096 (2.04-2.04)

The table below summarises the geometric issues observed across the polymeric chains and their fit to the electron density. The red, orange, yellow and green segments of the lower bar indicate the fraction of residues that contain outliers for ≥ 3 , 2, 1 and 0 types of geometric quality criteria respectively. A grey segment represents the fraction of residues that are not modelled. The numeric value for each fraction is indicated below the corresponding segment, with a dot representing fractions $\leq 5\%$. The upper red bar (where present) indicates the fraction of residues that have poor fit to the electron density. The numeric value is given above the bar.

Mol	Chain	Length	Quality of chain
1	A	402	
1	B	402	
1	C	402	

2 Entry composition

There are 4 unique types of molecules in this entry. The entry contains 9680 atoms, of which 0 are hydrogens and 0 are deuteriums.

In the tables below, the ZeroOcc column contains the number of atoms modelled with zero occupancy, the AltConf column contains the number of residues with at least one atom in alternate conformation and the Trace column contains the number of residues modelled with at most 2 atoms.

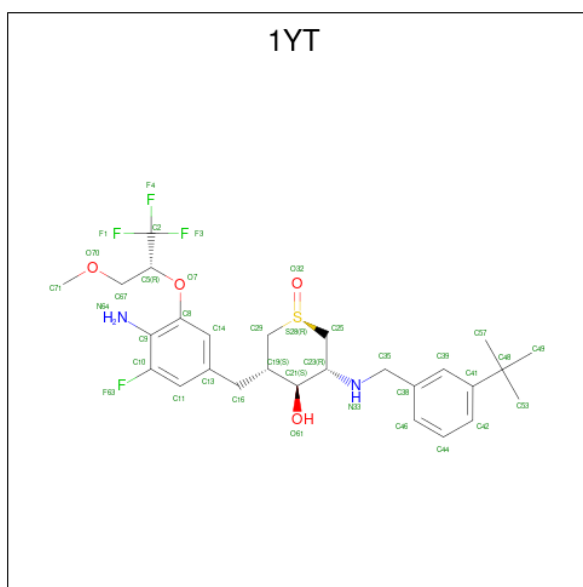
- Molecule 1 is a protein called Beta-secretase 1.

Mol	Chain	Residues	Atoms					ZeroOcc	AltConf	Trace
			Total	C	N	O	S			
1	A	376	2974	1902	495	563	14	0	2	0
1	B	378	2984	1908	497	565	14	0	2	0
1	C	381	2993	1917	497	565	14	0	0	0

There are 6 discrepancies between the modelled and reference sequences:

Chain	Residue	Modelled	Actual	Comment	Reference
A	33P	GLY	-	expression tag	UNP P56817
A	34P	PRO	-	expression tag	UNP P56817
B	33P	GLY	-	expression tag	UNP P56817
B	34P	PRO	-	expression tag	UNP P56817
C	33P	GLY	-	expression tag	UNP P56817
C	34P	PRO	-	expression tag	UNP P56817

- Molecule 2 is (1R,3S,4S,5R)-3-(4-amino-3-fluoro-5-((2R)-1,1,1-trifluoro-3-methoxypropyl)oxy)benzyl)-5-((3-tert-butylbenzyl)amino)tetrahydro-2H-thiopyran-4-ol 1-oxide (three-letter code: 1YT) (formula: C₂₇H₃₆F₄N₂O₄S).



Mol	Chain	Residues	Atoms					ZeroOcc	AltConf		
			Total	C	F	N	O			S	
2	A	1	Total	38	27	4	2	4	1	0	0
2	B	1	Total	38	27	4	2	4	1	0	0
2	C	1	Total	38	27	4	2	4	1	0	0

- Molecule 3 is GLYCEROL (three-letter code: GOL) (formula: C₃H₈O₃).



Mol	Chain	Residues	Atoms			ZeroOcc	AltConf	
			Total	C	O			
3	B	1	Total	6	3	3	0	0

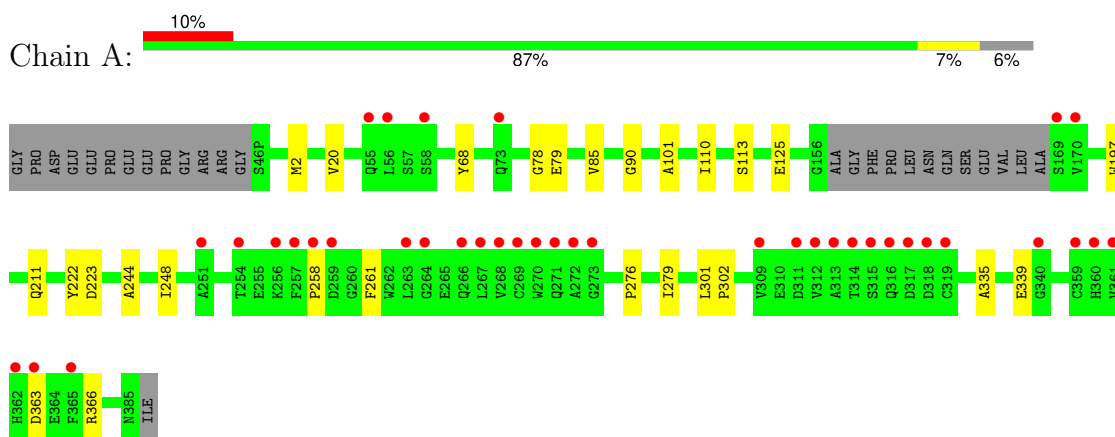
- Molecule 4 is water.

Mol	Chain	Residues	Atoms		ZeroOcc	AltConf
4	A	193	Total 193	O 193	0	0
4	B	198	Total 198	O 198	0	0
4	C	218	Total 218	O 218	0	0

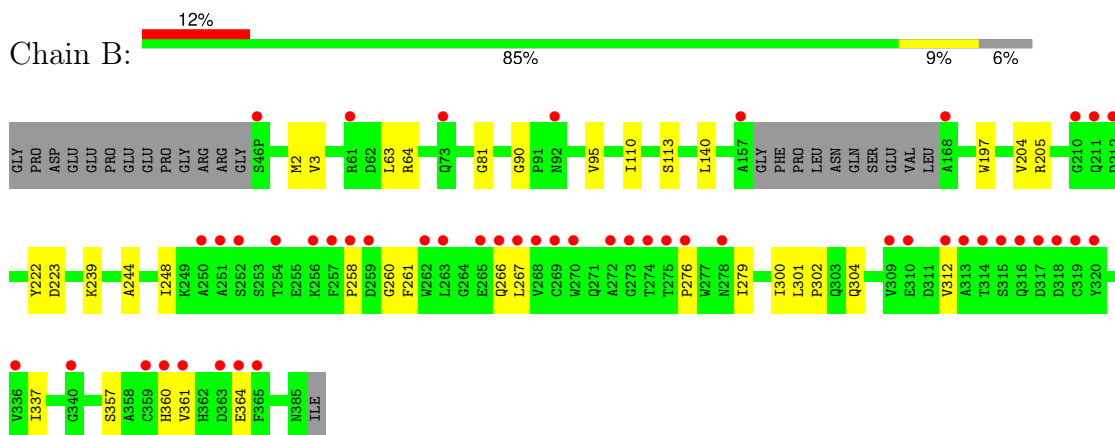
3 Residue-property plots [i](#)

These plots are drawn for all protein, RNA, DNA and oligosaccharide chains in the entry. The first graphic for a chain summarises the proportions of the various outlier classes displayed in the second graphic. The second graphic shows the sequence view annotated by issues in geometry and electron density. Residues are color-coded according to the number of geometric quality criteria for which they contain at least one outlier: green = 0, yellow = 1, orange = 2 and red = 3 or more. A red dot above a residue indicates a poor fit to the electron density ($RSRZ > 2$). Stretches of 2 or more consecutive residues without any outlier are shown as a green connector. Residues present in the sample, but not in the model, are shown in grey.

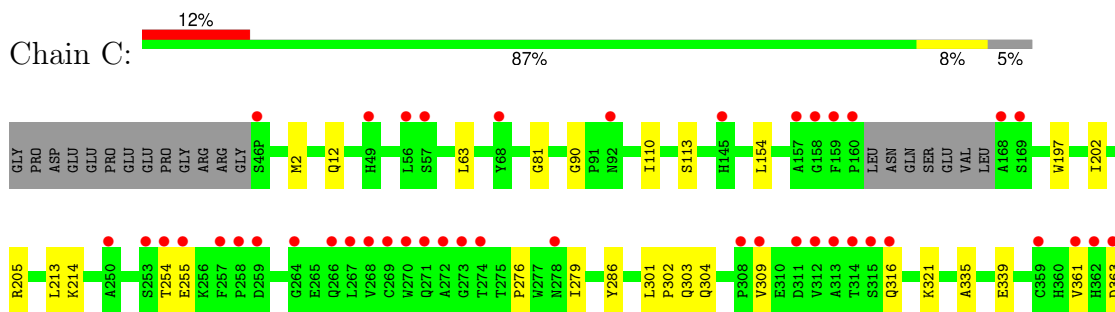
- Molecule 1: Beta-secretase 1

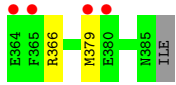


- Molecule 1: Beta-secretase 1



- Molecule 1: Beta-secretase 1





4 Data and refinement statistics

Property	Value	Source
Space group	P 1 21 1	Depositor
Cell constants a, b, c, α , β , γ	82.29Å 103.54Å 100.43Å 90.00° 104.27° 90.00°	Depositor
Resolution (Å)	39.88 – 2.05 39.88 – 2.05	Depositor EDS
% Data completeness (in resolution range)	99.5 (39.88-2.05) 99.6 (39.88-2.05)	Depositor EDS
R_{merge}	0.06	Depositor
R_{sym}	(Not available)	Depositor
$\langle I/\sigma(I) \rangle$ ¹	2.15 (at 2.05Å)	Xtrriage
Refinement program	CNS, CNX 2002	Depositor
R, R_{free}	0.199 , 0.224 0.193 , 0.218	Depositor DCC
R_{free} test set	5146 reflections (5.05%)	wwPDB-VP
Wilson B-factor (Å ²)	37.6	Xtrriage
Anisotropy	0.390	Xtrriage
Bulk solvent k_{sol} (e/Å ³), B_{sol} (Å ²)	0.36 , 40.2	EDS
L-test for twinning ²	$\langle L \rangle = 0.49$, $\langle L^2 \rangle = 0.32$	Xtrriage
Estimated twinning fraction	No twinning to report.	Xtrriage
F_o, F_c correlation	0.96	EDS
Total number of atoms	9680	wwPDB-VP
Average B, all atoms (Å ²)	44.0	wwPDB-VP

Xtrriage's analysis on translational NCS is as follows: *The largest off-origin peak in the Patterson function is 4.19% of the height of the origin peak. No significant pseudotranslation is detected.*

¹Intensities estimated from amplitudes.

²Theoretical values of $\langle |L| \rangle$, $\langle L^2 \rangle$ for acentric reflections are 0.5, 0.333 respectively for untwinned datasets, and 0.375, 0.2 for perfectly twinned datasets.

5 Model quality [i](#)

5.1 Standard geometry [i](#)

Bond lengths and bond angles in the following residue types are not validated in this section: 1YT, GOL

The Z score for a bond length (or angle) is the number of standard deviations the observed value is removed from the expected value. A bond length (or angle) with $|Z| > 5$ is considered an outlier worth inspection. RMSZ is the root-mean-square of all Z scores of the bond lengths (or angles).

Mol	Chain	Bond lengths		Bond angles	
		RMSZ	# Z >5	RMSZ	# Z >5
1	A	0.28	0/3049	0.46	0/4143
1	B	0.28	0/3059	0.46	0/4157
1	C	0.28	0/3070	0.47	0/4173
All	All	0.28	0/9178	0.46	0/12473

There are no bond length outliers.

There are no bond angle outliers.

There are no chirality outliers.

There are no planarity outliers.

5.2 Too-close contacts [i](#)

In the following table, the Non-H and H(model) columns list the number of non-hydrogen atoms and hydrogen atoms in the chain respectively. The H(added) column lists the number of hydrogen atoms added and optimized by MolProbity. The Clashes column lists the number of clashes within the asymmetric unit, whereas Symm-Clashes lists symmetry-related clashes.

Mol	Chain	Non-H	H(model)	H(added)	Clashes	Symm-Clashes
1	A	2974	0	2880	14	0
1	B	2984	0	2890	17	0
1	C	2993	0	2899	17	0
2	A	38	0	36	0	0
2	B	38	0	36	0	0
2	C	38	0	36	0	0
3	B	6	0	8	0	0
4	A	193	0	0	2	0
4	B	198	0	0	0	0
4	C	218	0	0	0	0
All	All	9680	0	8785	47	0

The all-atom clashscore is defined as the number of clashes found per 1000 atoms (including hydrogen atoms). The all-atom clashscore for this structure is 3.

All (47) close contacts within the same asymmetric unit are listed below, sorted by their clash magnitude.

Atom-1	Atom-2	Interatomic distance (Å)	Clash overlap (Å)
1:B:357:SER:O	1:B:360:HIS:HB3	1.99	0.62
1:A:335:ALA:O	1:A:339:GLU:HG3	2.01	0.61
1:C:304:GLN:HG3	1:C:361:VAL:HG21	1.84	0.59
1:A:110:ILE:HB	1:A:113:SER:HB3	1.87	0.57
1:A:2:MET:HG2	1:A:90:GLY:HA2	1.87	0.57
1:C:335:ALA:O	1:C:339:GLU:HG3	2.05	0.56
1:B:110:ILE:HB	1:B:113:SER:HB3	1.87	0.56
1:C:363:ASP:HB3	1:C:366:ARG:O	2.06	0.56
1:C:110:ILE:HB	1:C:113:SER:HB3	1.88	0.55
1:B:267:LEU:HD21	1:B:312:VAL:HG13	1.87	0.55
1:B:2:MET:HG2	1:B:90:GLY:HA2	1.88	0.55
1:C:2:MET:HG2	1:C:90:GLY:HA2	1.91	0.53
1:A:125:GLU:HG3	4:A:783:HOH:O	2.11	0.51
1:C:254:THR:HG21	1:C:279:ILE:HG21	1.93	0.50
1:B:276:PRO:O	1:B:279:ILE:HG12	2.11	0.49
1:A:79:GLU:HG3	4:A:617:HOH:O	2.12	0.49
1:B:204:VAL:O	1:B:205:ARG:HG2	2.13	0.48
1:C:276:PRO:O	1:C:279:ILE:HG12	2.14	0.48
1:C:12:GLN:OE1	1:C:113:SER:HA	2.15	0.47
1:A:363:ASP:HB3	1:A:366:ARG:O	2.15	0.47
1:B:300:ILE:HD13	1:B:337:ILE:CD1	2.45	0.46
1:B:301:LEU:HB3	1:B:302:PRO:HD2	1.96	0.46
1:B:239:LYS:HB3	1:B:239:LYS:HE3	1.61	0.46
1:B:244:ALA:O	1:B:248:ILE:HG13	2.17	0.45
1:C:303:GLN:HB2	1:C:361:VAL:HG11	1.97	0.45
1:B:63:LEU:HG	1:B:81:GLY:HA2	1.99	0.44
1:B:304:GLN:CG	1:B:361:VAL:HG21	2.48	0.44
1:A:244:ALA:O	1:A:248:ILE:HG13	2.17	0.44
1:B:222:TYR:HA	1:B:223:ASP:HA	1.65	0.43
1:C:205:ARG:HB3	1:C:286:TYR:HB2	2.00	0.43
1:B:260:GLY:HA3	1:B:266:GLN:OE1	2.19	0.43
1:B:258:PRO:O	1:B:261:PHE:HB3	2.19	0.43
1:C:254:THR:HG23	1:C:255:GLU:HG3	2.00	0.43
1:A:68:TYR:CD1	1:B:3:VAL:HG11	2.54	0.43
1:A:301:LEU:HB3	1:A:302:PRO:HD2	2.01	0.43
1:C:154:LEU:O	1:C:339:GLU:HA	2.19	0.42
1:A:276:PRO:O	1:A:279:ILE:HG12	2.19	0.42

Continued on next page...

Continued from previous page...

Atom-1	Atom-2	Interatomic distance (Å)	Clash overlap (Å)
1:C:309:VAL:HG21	1:C:321:LYS:HG3	2.02	0.42
1:A:258:PRO:O	1:A:261:PHE:HB3	2.19	0.41
1:C:202:ILE:CD1	1:C:379:MET:HG3	2.50	0.41
1:C:63:LEU:HG	1:C:81:GLY:HA2	2.02	0.41
1:A:222:TYR:HA	1:A:223:ASP:HA	1.66	0.41
1:A:78:GLY:HA3	1:A:101:ALA:O	2.21	0.41
1:C:213:LEU:O	1:C:214:LYS:HB2	2.21	0.41
1:C:301:LEU:HB3	1:C:302:PRO:HD2	2.04	0.40
1:A:20:VAL:HG12	1:A:85:VAL:HG22	2.03	0.40
1:B:95:VAL:HG11	1:B:140:LEU:HA	2.03	0.40

There are no symmetry-related clashes.

5.3 Torsion angles [i](#)

5.3.1 Protein backbone [i](#)

In the following table, the Percentiles column shows the percent Ramachandran outliers of the chain as a percentile score with respect to all X-ray entries followed by that with respect to entries of similar resolution.

The Analysed column shows the number of residues for which the backbone conformation was analysed, and the total number of residues.

Mol	Chain	Analysed	Favoured	Allowed	Outliers	Percentiles	
1	A	374/402 (93%)	366 (98%)	8 (2%)	0	100	100
1	B	376/402 (94%)	364 (97%)	12 (3%)	0	100	100
1	C	377/402 (94%)	369 (98%)	8 (2%)	0	100	100
All	All	1127/1206 (93%)	1099 (98%)	28 (2%)	0	100	100

There are no Ramachandran outliers to report.

5.3.2 Protein sidechains [i](#)

In the following table, the Percentiles column shows the percent sidechain outliers of the chain as a percentile score with respect to all X-ray entries followed by that with respect to entries of similar resolution.

The Analysed column shows the number of residues for which the sidechain conformation was analysed, and the total number of residues.

Mol	Chain	Analysed	Rotameric	Outliers	Percentiles	
1	A	323/342 (94%)	321 (99%)	2 (1%)	84	86
1	B	323/342 (94%)	320 (99%)	3 (1%)	75	77
1	C	324/342 (95%)	322 (99%)	2 (1%)	84	86
All	All	970/1026 (94%)	963 (99%)	7 (1%)	81	83

All (7) residues with a non-rotameric sidechain are listed below:

Mol	Chain	Res	Type
1	A	197	TRP
1	A	211	GLN
1	B	64	ARG
1	B	197	TRP
1	B	364	GLU
1	C	197	TRP
1	C	316	GLN

Sometimes sidechains can be flipped to improve hydrogen bonding and reduce clashes. All (8) such sidechains are listed below:

Mol	Chain	Res	Type
1	A	114	ASN
1	A	326	GLN
1	B	114	ASN
1	B	278	ASN
1	B	293	ASN
1	B	326	GLN
1	C	114	ASN
1	C	326	GLN

5.3.3 RNA [i](#)

There are no RNA molecules in this entry.

5.4 Non-standard residues in protein, DNA, RNA chains [i](#)

There are no non-standard protein/DNA/RNA residues in this entry.

5.5 Carbohydrates [i](#)

There are no oligosaccharides in this entry.

5.6 Ligand geometry

4 ligands are modelled in this entry.

In the following table, the Counts columns list the number of bonds (or angles) for which Mogul statistics could be retrieved, the number of bonds (or angles) that are observed in the model and the number of bonds (or angles) that are defined in the Chemical Component Dictionary. The Link column lists molecule types, if any, to which the group is linked. The Z score for a bond length (or angle) is the number of standard deviations the observed value is removed from the expected value. A bond length (or angle) with $|Z| > 2$ is considered an outlier worth inspection. RMSZ is the root-mean-square of all Z scores of the bond lengths (or angles).

Mol	Type	Chain	Res	Link	Bond lengths			Bond angles		
					Counts	RMSZ	# Z > 2	Counts	RMSZ	# Z > 2
2	1YT	B	502	-	37,40,40	1.66	7 (18%)	48,59,59	1.14	4 (8%)
2	1YT	A	501	-	37,40,40	1.63	7 (18%)	48,59,59	1.14	4 (8%)
2	1YT	C	501	-	37,40,40	1.65	7 (18%)	48,59,59	1.12	3 (6%)
3	GOL	B	501	-	5,5,5	0.75	0	5,5,5	0.43	0

In the following table, the Chirals column lists the number of chiral outliers, the number of chiral centers analysed, the number of these observed in the model and the number defined in the Chemical Component Dictionary. Similar counts are reported in the Torsion and Rings columns. '-' means no outliers of that kind were identified.

Mol	Type	Chain	Res	Link	Chirals	Torsions	Rings
2	1YT	B	502	-	-	2/28/44/44	0/3/3/3
2	1YT	A	501	-	-	2/28/44/44	0/3/3/3
2	1YT	C	501	-	-	2/28/44/44	0/3/3/3
3	GOL	B	501	-	-	2/4/4/4	-

All (21) bond length outliers are listed below:

Mol	Chain	Res	Type	Atoms	Z	Observed(Å)	Ideal(Å)
2	B	502	1YT	C25-C23	3.91	1.56	1.52
2	C	501	1YT	C25-C23	3.77	1.56	1.52
2	A	501	1YT	C25-C23	3.74	1.56	1.52
2	A	501	1YT	C16-C19	3.16	1.57	1.53
2	C	501	1YT	C16-C19	3.10	1.57	1.53
2	B	502	1YT	C16-C19	3.00	1.57	1.53
2	B	502	1YT	C11-C10	2.63	1.42	1.37
2	C	501	1YT	C11-C10	2.53	1.42	1.37
2	A	501	1YT	C11-C10	2.51	1.42	1.37
2	B	502	1YT	C39-C41	2.50	1.43	1.39
2	A	501	1YT	C39-C41	2.47	1.43	1.39

Continued on next page...

Continued from previous page...

Mol	Chain	Res	Type	Atoms	Z	Observed(Å)	Ideal(Å)
2	C	501	1YT	C42-C41	2.45	1.43	1.39
2	C	501	1YT	C39-C41	2.41	1.43	1.39
2	A	501	1YT	C42-C41	2.41	1.43	1.39
2	C	501	1YT	C67-C5	2.40	1.56	1.50
2	B	502	1YT	C67-C5	2.38	1.56	1.50
2	A	501	1YT	C67-C5	2.37	1.56	1.50
2	B	502	1YT	C42-C41	2.29	1.43	1.39
2	A	501	1YT	C21-C23	2.07	1.56	1.52
2	B	502	1YT	C11-C13	2.05	1.42	1.39
2	C	501	1YT	C21-C23	2.04	1.56	1.52

All (11) bond angle outliers are listed below:

Mol	Chain	Res	Type	Atoms	Z	Observed(°)	Ideal(°)
2	C	501	1YT	C35-N33-C23	3.65	122.40	114.84
2	B	502	1YT	C35-N33-C23	3.64	122.38	114.84
2	A	501	1YT	C35-N33-C23	3.51	122.11	114.84
2	A	501	1YT	C53-C48-C41	2.26	115.69	110.35
2	B	502	1YT	C8-C9-C10	2.19	119.49	116.08
2	B	502	1YT	C53-C48-C41	2.17	115.47	110.35
2	A	501	1YT	C8-C9-C10	2.16	119.45	116.08
2	C	501	1YT	C8-C9-C10	2.13	119.39	116.08
2	A	501	1YT	C11-C10-C9	-2.10	120.27	123.36
2	B	502	1YT	C11-C10-C9	-2.07	120.32	123.36
2	C	501	1YT	C53-C48-C41	2.02	115.12	110.35

There are no chirality outliers.

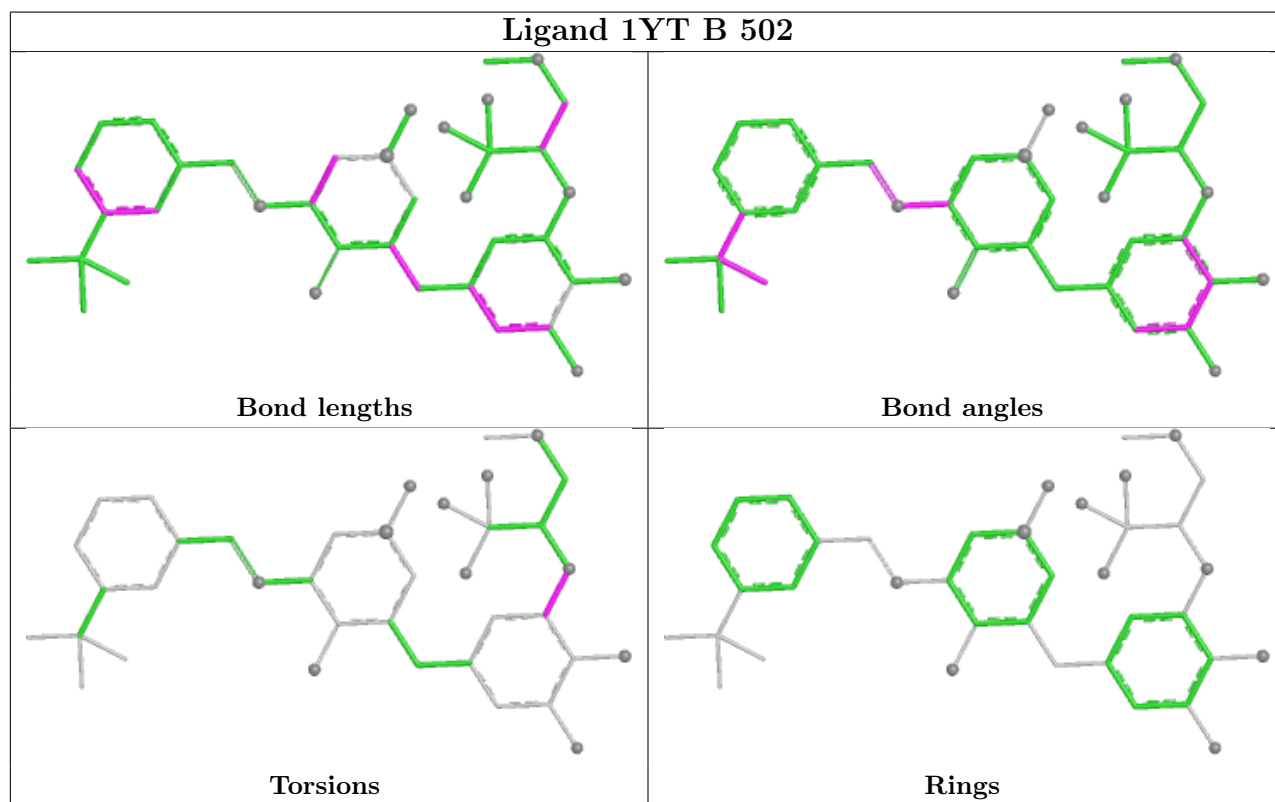
All (8) torsion outliers are listed below:

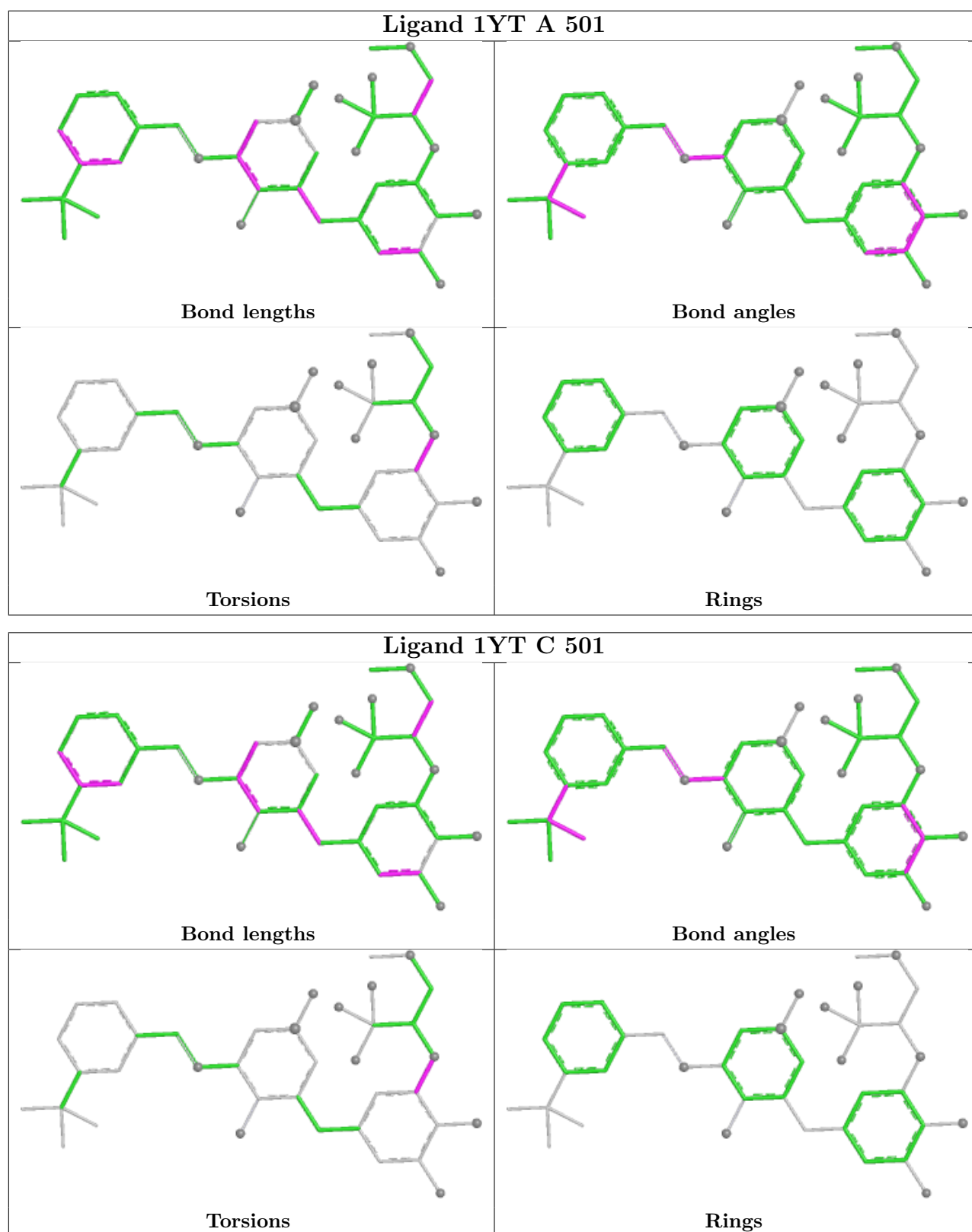
Mol	Chain	Res	Type	Atoms
3	B	501	GOL	O1-C1-C2-C3
3	B	501	GOL	O1-C1-C2-O2
2	A	501	1YT	C14-C8-O7-C5
2	B	502	1YT	C14-C8-O7-C5
2	A	501	1YT	C9-C8-O7-C5
2	B	502	1YT	C9-C8-O7-C5
2	C	501	1YT	C9-C8-O7-C5
2	C	501	1YT	C14-C8-O7-C5

There are no ring outliers.

No monomer is involved in short contacts.

The following is a two-dimensional graphical depiction of Mogul quality analysis of bond lengths, bond angles, torsion angles, and ring geometry for all instances of the Ligand of Interest. In addition, ligands with molecular weight > 250 and outliers as shown on the validation Tables will also be included. For torsion angles, if less than 5% of the Mogul distribution of torsion angles is within 10 degrees of the torsion angle in question, then that torsion angle is considered an outlier. Any bond that is central to one or more torsion angles identified as an outlier by Mogul will be highlighted in the graph. For rings, the root-mean-square deviation (RMSD) between the ring in question and similar rings identified by Mogul is calculated over all ring torsion angles. If the average RMSD is greater than 60 degrees and the minimal RMSD between the ring in question and any Mogul-identified rings is also greater than 60 degrees, then that ring is considered an outlier. The outliers are highlighted in purple. The color gray indicates Mogul did not find sufficient equivalents in the CSD to analyse the geometry.





5.7 Other polymers [\(i\)](#)

There are no such residues in this entry.

5.8 Polymer linkage issues

There are no chain breaks in this entry.

6 Fit of model and data [i](#)

6.1 Protein, DNA and RNA chains [i](#)

In the following table, the column labelled ‘#RSRZ > 2’ contains the number (and percentage) of RSRZ outliers, followed by percent RSRZ outliers for the chain as percentile scores relative to all X-ray entries and entries of similar resolution. The OWAB column contains the minimum, median, 95th percentile and maximum values of the occupancy-weighted average B-factor per residue. The column labelled ‘Q < 0.9’ lists the number of (and percentage) of residues with an average occupancy less than 0.9.

Mol	Chain	Analysed	<RSRZ>	#RSRZ>2	OWAB(Å ²)	Q<0.9
1	A	376/402 (93%)	0.44	39 (10%) 13 13	22, 40, 74, 108	2 (0%)
1	B	378/402 (94%)	0.58	50 (13%) 8 8	19, 41, 78, 113	2 (0%)
1	C	381/402 (94%)	0.49	47 (12%) 9 9	27, 41, 75, 110	0
All	All	1135/1206 (94%)	0.50	136 (11%) 10 10	19, 41, 76, 113	4 (0%)

All (136) RSRZ outliers are listed below:

Mol	Chain	Res	Type	RSRZ
1	B	314	THR	7.2
1	A	312	VAL	6.6
1	B	258	PRO	5.9
1	C	312	VAL	5.9
1	A	365	PHE	5.8
1	B	312	VAL	5.6
1	C	365	PHE	5.2
1	B	272	ALA	5.1
1	B	313	ALA	5.1
1	C	258	PRO	5.0
1	C	159	PHE	4.9
1	B	268	VAL	4.8
1	C	314	THR	4.7
1	C	311	ASP	4.5
1	A	258	PRO	4.5
1	C	160	PRO	4.5
1	A	272	ALA	4.4
1	A	313	ALA	4.4
1	B	273	GLY	4.4
1	C	267	LEU	4.2
1	C	313	ALA	4.1
1	C	362	HIS	4.0
1	B	267	LEU	4.0

Continued on next page...

Continued from previous page...

Mol	Chain	Res	Type	RSRZ
1	B	317	ASP	3.8
1	A	269	CYS	3.7
1	A	259	ASP	3.7
1	A	268	VAL	3.6
1	C	361	VAL	3.6
1	A	314	THR	3.5
1	A	309	VAL	3.5
1	B	359	CYS	3.5
1	C	168	ALA	3.4
1	B	361	VAL	3.4
1	B	251	ALA	3.4
1	A	315	SER	3.4
1	B	315	SER	3.4
1	A	73[A]	GLN	3.3
1	C	46(P)	SER	3.3
1	B	252	SER	3.3
1	B	270	TRP	3.3
1	B	340	GLY	3.3
1	B	365	PHE	3.2
1	B	46(P)	SER	3.2
1	B	319	CYS	3.2
1	A	267	LEU	3.2
1	B	360	HIS	3.2
1	A	271	GLN	3.2
1	B	318	ASP	3.2
1	A	311	ASP	3.1
1	C	158	GLY	3.1
1	C	272	ALA	3.1
1	C	278	ASN	3.1
1	A	55	GLN	3.0
1	A	318	ASP	3.0
1	A	319	CYS	3.0
1	C	315	SER	3.0
1	A	363	ASP	2.9
1	B	257	PHE	2.9
1	B	250	ALA	2.9
1	C	269	CYS	2.9
1	C	270	TRP	2.9
1	A	270	TRP	2.9
1	B	262	TRP	2.9
1	C	273	GLY	2.9
1	B	254	THR	2.8

Continued on next page...

Continued from previous page...

Mol	Chain	Res	Type	RSRZ
1	C	253	SER	2.8
1	B	309	VAL	2.8
1	B	168	ALA	2.8
1	C	257	PHE	2.8
1	C	254	THR	2.8
1	B	73[A]	GLN	2.7
1	B	274	THR	2.7
1	A	361	VAL	2.7
1	C	268	VAL	2.7
1	B	269	CYS	2.7
1	B	263	LEU	2.6
1	C	68	TYR	2.6
1	C	264	GLY	2.6
1	B	310	GLU	2.6
1	B	316	GLN	2.6
1	A	362	HIS	2.6
1	B	320	TYR	2.5
1	B	278	ASN	2.5
1	A	254	THR	2.5
1	A	360	HIS	2.5
1	B	266	GLN	2.5
1	A	56	LEU	2.4
1	A	251	ALA	2.4
1	B	256	LYS	2.4
1	C	309	VAL	2.4
1	A	266	GLN	2.4
1	B	211	GLN	2.4
1	A	256	LYS	2.3
1	C	49	HIS	2.3
1	C	266	GLN	2.3
1	C	316	GLN	2.3
1	A	273	GLY	2.3
1	B	364	GLU	2.3
1	C	145	HIS	2.3
1	A	170	VAL	2.3
1	A	317	ASP	2.3
1	C	255	GLU	2.3
1	C	380	GLU	2.3
1	A	340	GLY	2.3
1	C	92	ASN	2.3
1	C	56	LEU	2.3
1	C	274	THR	2.3

Continued on next page...

Continued from previous page...

Mol	Chain	Res	Type	RSRZ
1	B	259	ASP	2.2
1	A	58	SER	2.2
1	B	363	ASP	2.2
1	C	57	SER	2.2
1	B	265	GLU	2.2
1	C	250	ALA	2.2
1	C	308	PRO	2.2
1	B	92	ASN	2.2
1	A	257	PHE	2.1
1	B	61	ARG	2.1
1	A	263	LEU	2.1
1	C	157	ALA	2.1
1	B	210	GLY	2.1
1	C	364	GLU	2.1
1	B	157	ALA	2.1
1	A	316	GLN	2.1
1	C	379	MET	2.1
1	A	359	CYS	2.1
1	B	212	ASP	2.1
1	C	363	ASP	2.1
1	B	275	THR	2.1
1	A	264	GLY	2.0
1	B	276	PRO	2.0
1	C	359	CYS	2.0
1	C	259	ASP	2.0
1	A	169	SER	2.0
1	C	169	SER	2.0
1	C	271	GLN	2.0
1	B	336	VAL	2.0

6.2 Non-standard residues in protein, DNA, RNA chains [i](#)

There are no non-standard protein/DNA/RNA residues in this entry.

6.3 Carbohydrates [i](#)

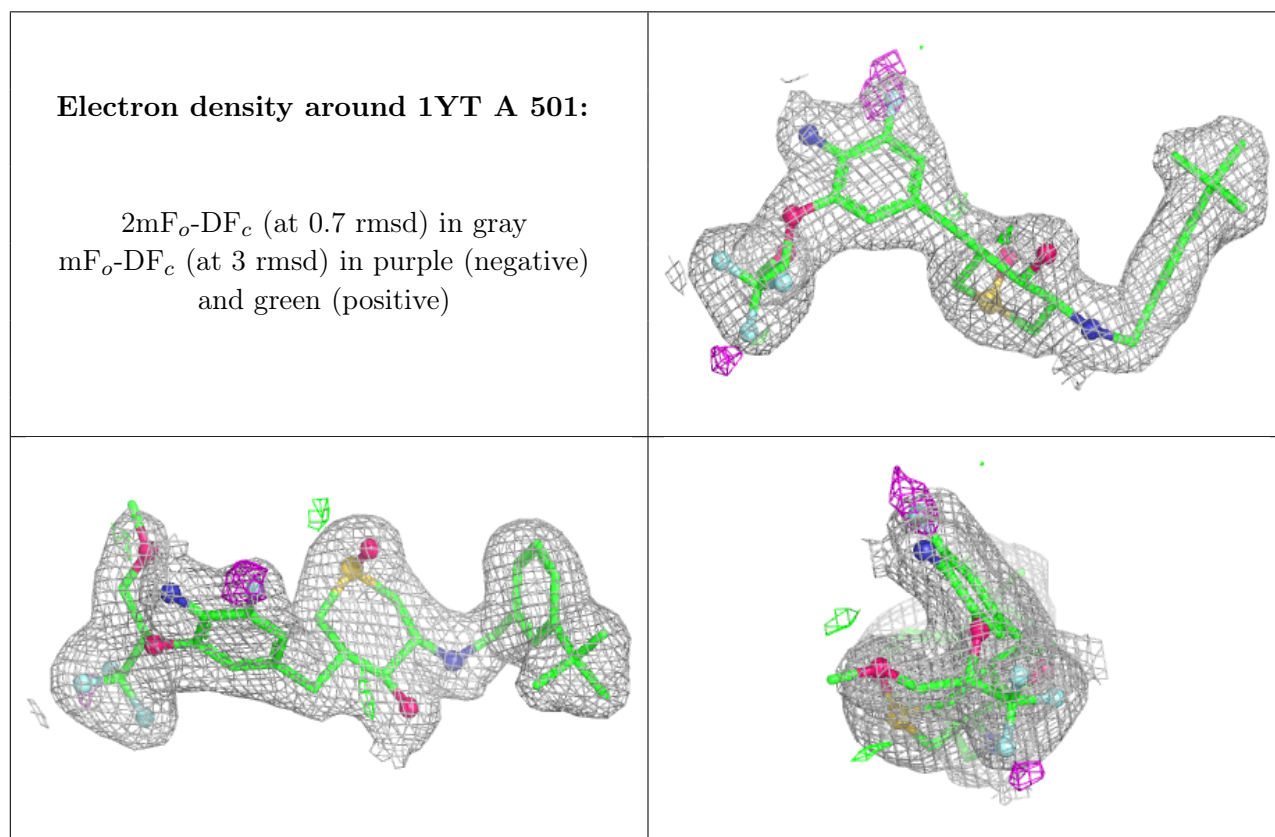
There are no monosaccharides in this entry.

6.4 Ligands [i](#)

In the following table, the Atoms column lists the number of modelled atoms in the group and the number defined in the chemical component dictionary. The B-factors column lists the minimum, median, 95th percentile and maximum values of B factors of atoms in the group. The column labelled 'Q< 0.9' lists the number of atoms with occupancy less than 0.9.

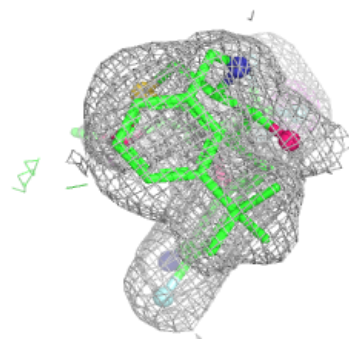
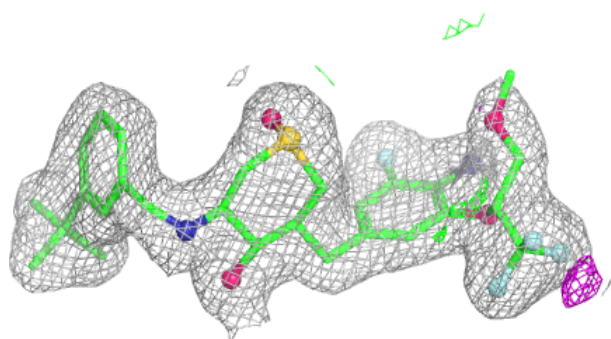
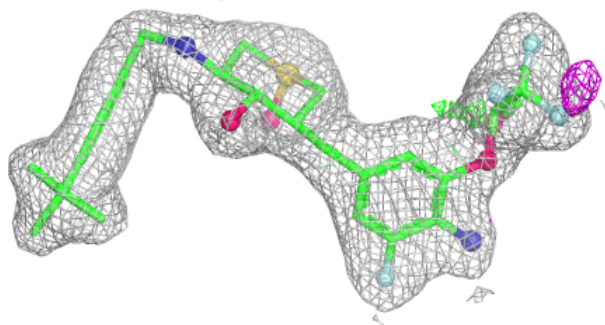
Mol	Type	Chain	Res	Atoms	RSCC	RSR	B-factors(Å ²)	Q<0.9
3	GOL	B	501	6/6	0.91	0.12	46,48,49,52	0
2	1YT	A	501	38/38	0.95	0.09	28,35,45,52	0
2	1YT	C	501	38/38	0.96	0.08	30,36,44,52	0
2	1YT	B	502	38/38	0.96	0.08	27,34,45,50	0

The following is a graphical depiction of the model fit to experimental electron density of all instances of the Ligand of Interest. In addition, ligands with molecular weight > 250 and outliers as shown on the geometry validation Tables will also be included. Each fit is shown from different orientation to approximate a three-dimensional view.

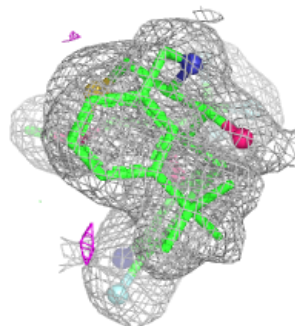
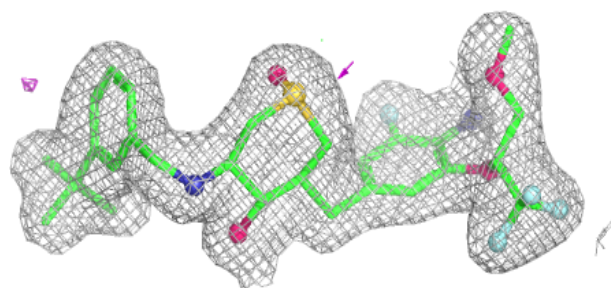
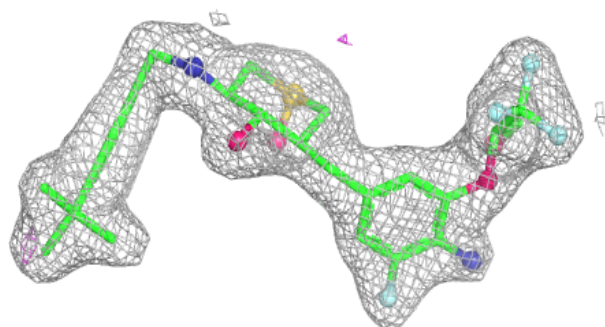


Electron density around 1YT C 501:

$2mF_o-DF_c$ (at 0.7 rmsd) in gray
 mF_o-DF_c (at 3 rmsd) in purple (negative)
and green (positive)

**Electron density around 1YT B 502:**

$2mF_o-DF_c$ (at 0.7 rmsd) in gray
 mF_o-DF_c (at 3 rmsd) in purple (negative)
and green (positive)



6.5 Other polymers [i](#)

There are no such residues in this entry.