



## Full wwPDB EM Validation Report ⓘ

Jan 5, 2021 – 02:10 PM JST

PDB ID : 6LYU  
EMDB ID : EMD-30018  
Title : Structure of the BAM complex  
Authors : Xiao, L.; Huang, Y.  
Deposited on : 2020-02-15  
Resolution : 4.20 Å (reported)

This is a Full wwPDB EM Validation Report for a publicly released PDB entry.

We welcome your comments at [validation@mail.wwpdb.org](mailto:validation@mail.wwpdb.org)

A user guide is available at

<https://www.wwpdb.org/validation/2017/EMValidationReportHelp>

with specific help available everywhere you see the ⓘ symbol.

---

The following versions of software and data (see [references ⓘ](#)) were used in the production of this report:

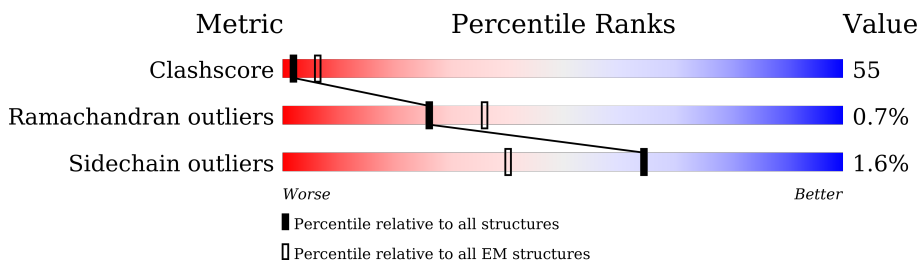
EMDB validation analysis : 0.0.0.dev61  
MolProbity : 4.02b-467  
Percentile statistics : 20191225.v01 (using entries in the PDB archive December 25th 2019)  
Ideal geometry (proteins) : Engh & Huber (2001)  
Ideal geometry (DNA, RNA) : Parkinson et al. (1996)  
Validation Pipeline (wwPDB-VP) : 2.16

# 1 Overall quality at a glance i

The following experimental techniques were used to determine the structure:  
*ELECTRON MICROSCOPY*

The reported resolution of this entry is 4.20 Å.

Percentile scores (ranging between 0-100) for global validation metrics of the entry are shown in the following graphic. The table shows the number of entries on which the scores are based.



Metric	Whole archive (#Entries)	EM structures (#Entries)
Clashscore	158937	4297
Ramachandran outliers	154571	4023
Sidechain outliers	154315	3826

The table below summarises the geometric issues observed across the polymeric chains and their fit to the map. The red, orange, yellow and green segments of the bar indicate the fraction of residues that contain outliers for  $\geq 3$ , 2, 1 and 0 types of geometric quality criteria respectively. A grey segment represents the fraction of residues that are not modelled. The numeric value for each fraction is indicated below the corresponding segment, with a dot representing fractions  $\leq 5\%$ . The upper red bar (where present) indicates the fraction of residues that have poor fit to the EM map (all-atom inclusion  $< 40\%$ ). The numeric value is given above the bar.

Mol	Chain	Length	Quality of chain
1	A	810	
2	B	400	
3	C	344	
4	D	245	
5	E	119	

## 2 Entry composition

There are 5 unique types of molecules in this entry. The entry contains 11118 atoms, of which 0 are hydrogens and 0 are deuteriums.

In the tables below, the AltConf column contains the number of residues with at least one atom in alternate conformation and the Trace column contains the number of residues modelled with at most 2 atoms.

- Molecule 1 is a protein called Outer membrane protein assembly factor BamA.

Mol	Chain	Residues	Atoms					AltConf	Trace
			Total	C	N	O	S		
1	A	710	5567	3511	937	1104	15	0	0

- Molecule 2 is a protein called Outer membrane protein assembly factor BamB.

Mol	Chain	Residues	Atoms					AltConf	Trace
			Total	C	N	O	S		
2	B	367	2762	1732	473	551	6	0	0

There are 8 discrepancies between the modelled and reference sequences:

Chain	Residue	Modelled	Actual	Comment	Reference
B	393	TRP	-	expression tag	UNP P77774
B	394	SER	-	expression tag	UNP P77774
B	395	HIS	-	expression tag	UNP P77774
B	396	PRO	-	expression tag	UNP P77774
B	397	GLN	-	expression tag	UNP P77774
B	398	PHE	-	expression tag	UNP P77774
B	399	GLU	-	expression tag	UNP P77774
B	400	LYS	-	expression tag	UNP P77774

- Molecule 3 is a protein called Outer membrane protein assembly factor BamC.

Mol	Chain	Residues	Atoms					AltConf	Trace
			Total	C	N	O	S		
3	C	48	343	217	58	67	1	0	0

- Molecule 4 is a protein called Outer membrane protein assembly factor BamD.

Mol	Chain	Residues	Atoms					AltConf	Trace
			Total	C	N	O	S		
4	D	218	1761	1109	309	336	7	0	0

- Molecule 5 is a protein called Outer membrane protein assembly factor BamE.

Mol	Chain	Residues	Atoms					AltConf	Trace
			Total	C	N	O	S		
5	E	87	685	432	119	132	2	0	0

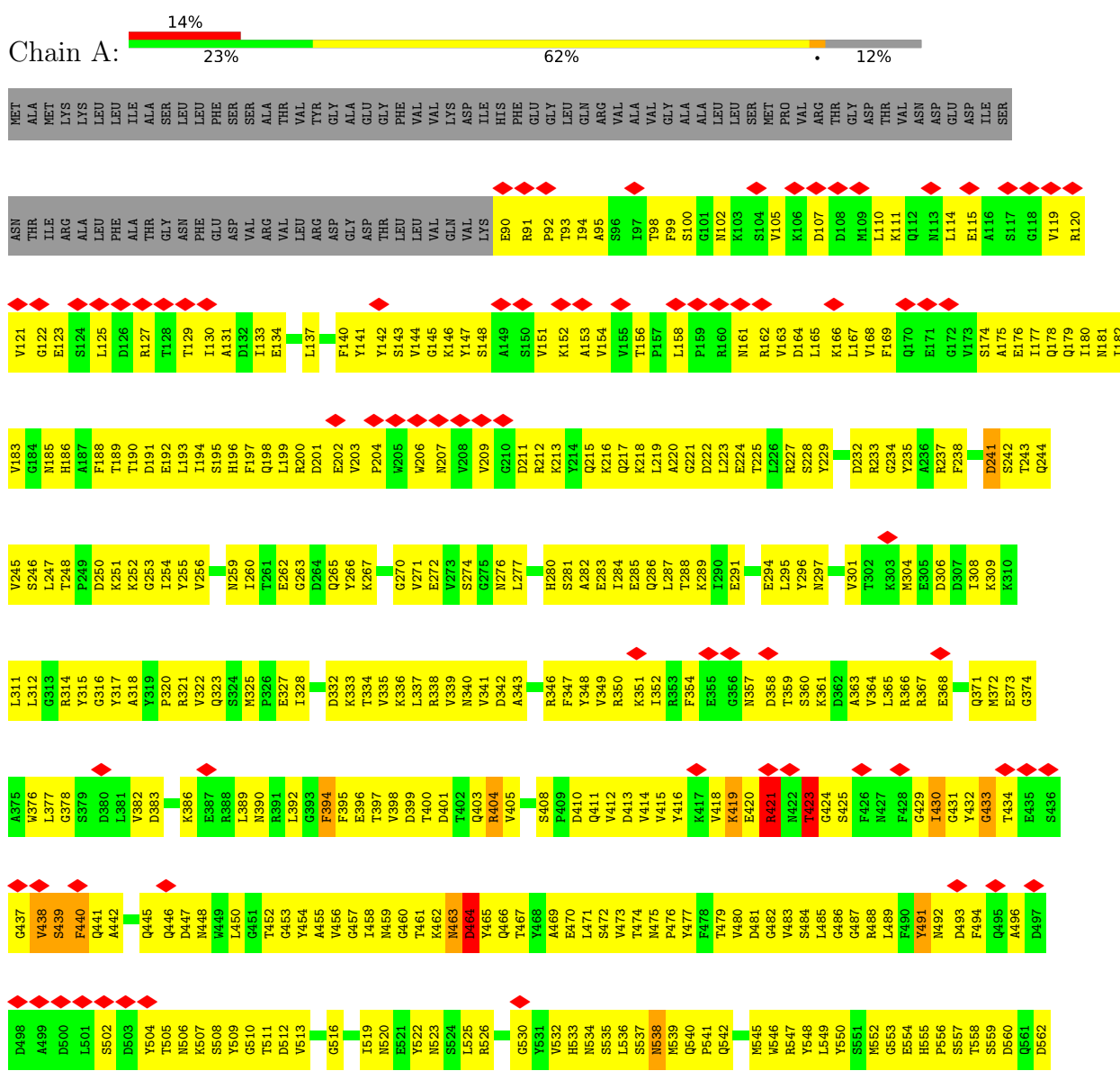
There are 6 discrepancies between the modelled and reference sequences:

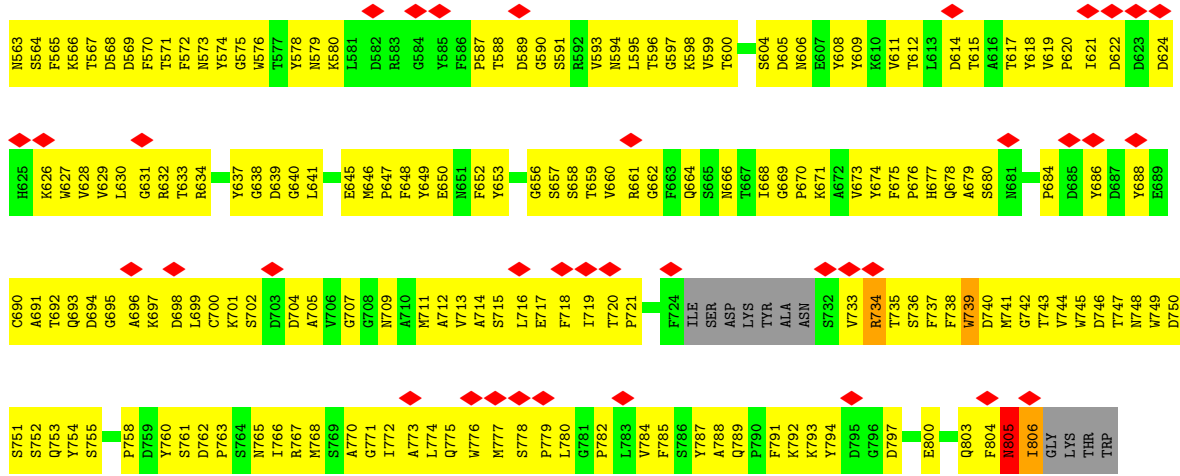
Chain	Residue	Modelled	Actual	Comment	Reference
E	114	HIS	-	expression tag	UNP P0A937
E	115	HIS	-	expression tag	UNP P0A937
E	116	HIS	-	expression tag	UNP P0A937
E	117	HIS	-	expression tag	UNP P0A937
E	118	HIS	-	expression tag	UNP P0A937
E	119	HIS	-	expression tag	UNP P0A937

### 3 Residue-property plots

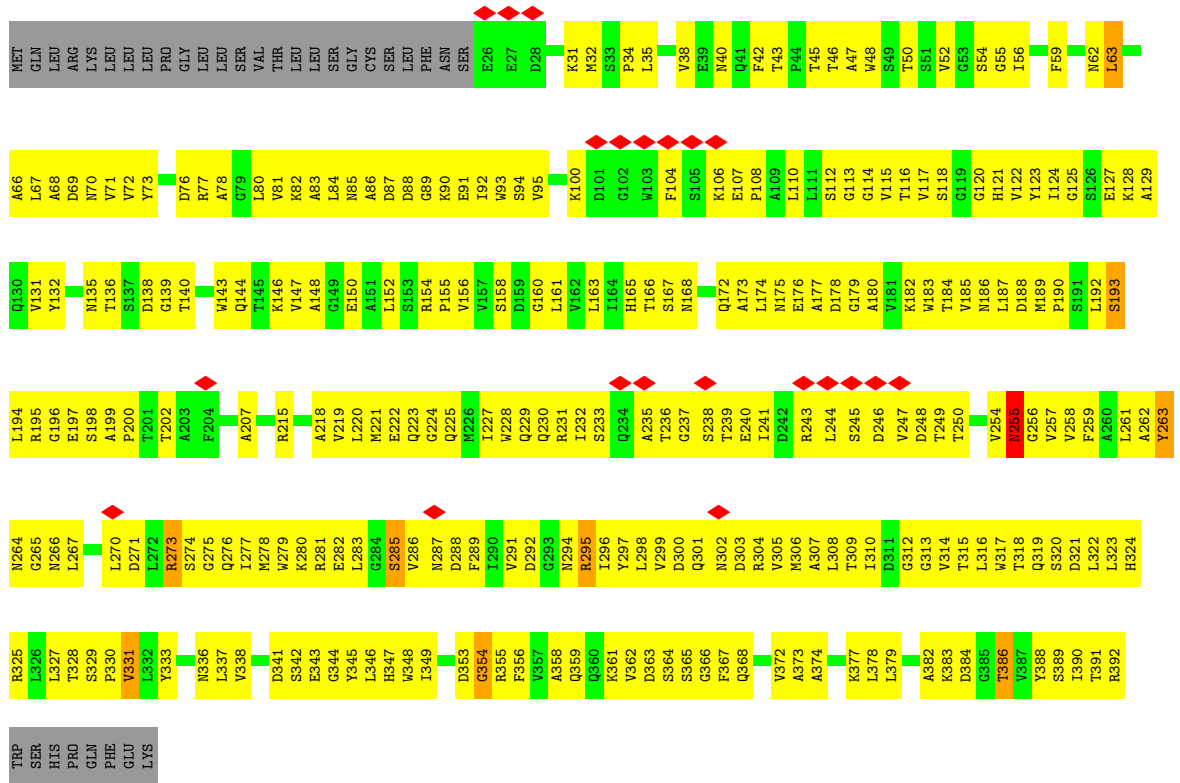
These plots are drawn for all protein, RNA, DNA and oligosaccharide chains in the entry. The first graphic for a chain summarises the proportions of the various outlier classes displayed in the second graphic. The second graphic shows the sequence view annotated by issues in geometry and atom inclusion in map density. Residues are color-coded according to the number of geometric quality criteria for which they contain at least one outlier: green = 0, yellow = 1, orange = 2 and red = 3 or more. A red diamond above a residue indicates a poor fit to the EM map for this residue (all-atom inclusion < 40%). Stretches of 2 or more consecutive residues without any outlier are shown as a green connector. Residues present in the sample, but not in the model, are shown in grey.

- Molecule 1: Outer membrane protein assembly factor BamA

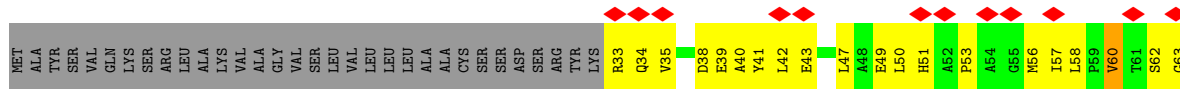


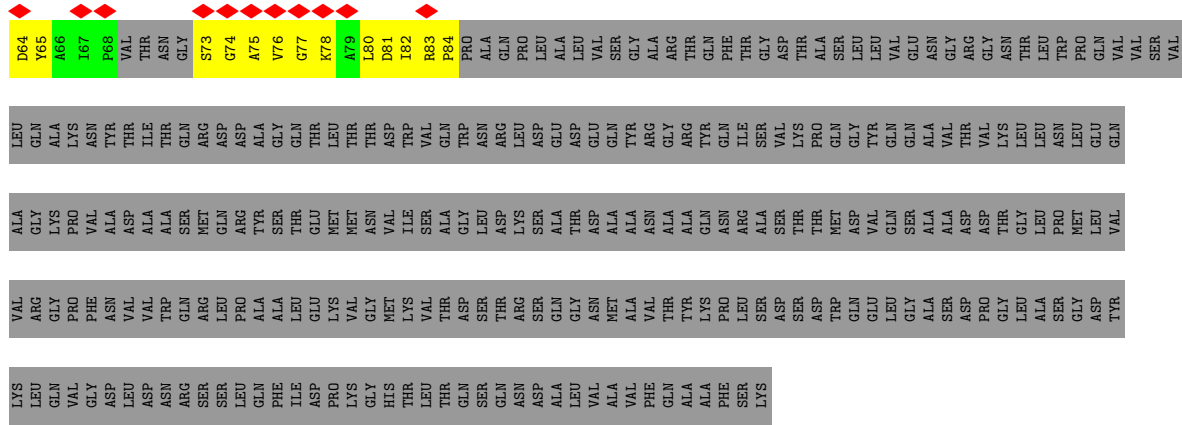


• Molecule 2: Outer membrane protein assembly factor BamB

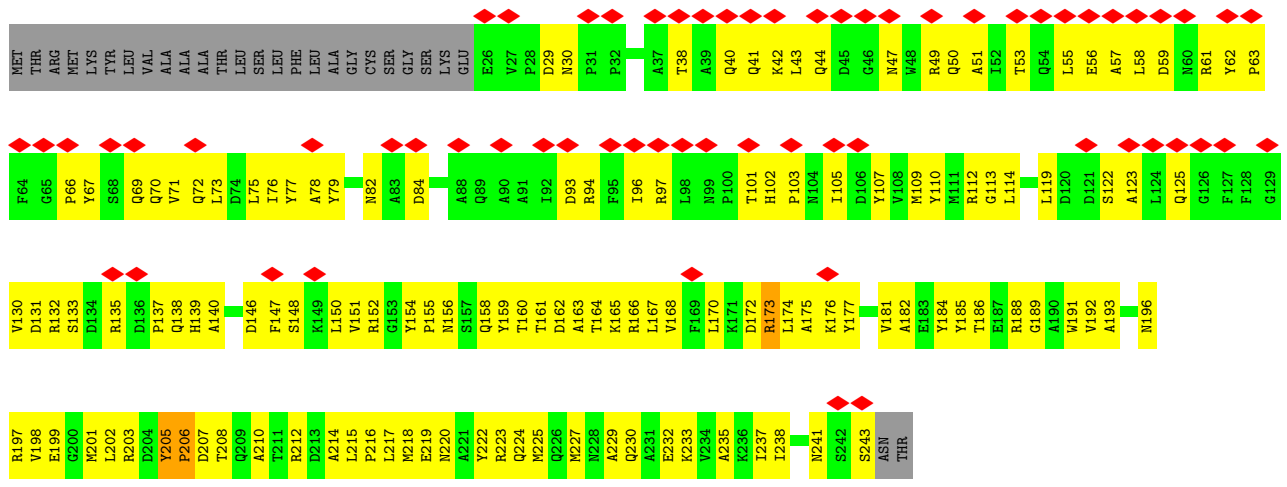


• Molecule 3: Outer membrane protein assembly factor BamC

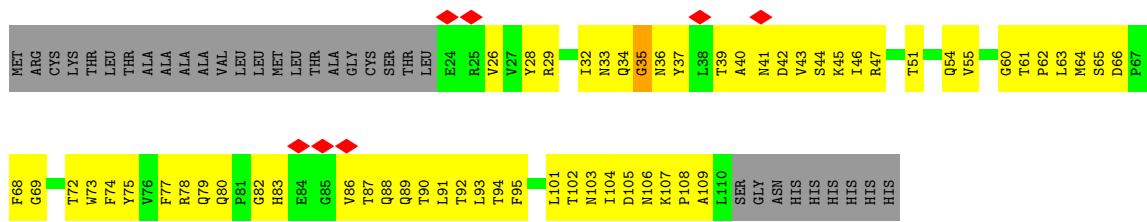




• Molecule 4: Outer membrane protein assembly factor BamD



• Molecule 5: Outer membrane protein assembly factor BamE



## 4 Experimental information

Property	Value	Source
EM reconstruction method	SINGLE PARTICLE	Depositor
Imposed symmetry	POINT, Not provided	
Number of particles used	395915	Depositor
Resolution determination method	FSC 0.143 CUT-OFF	Depositor
CTF correction method	PHASE FLIPPING AND AMPLITUDE CORRECTION	Depositor
Microscope	FEI TALOS ARCTICA	Depositor
Voltage (kV)	200	Depositor
Electron dose ( $e^-/\text{\AA}^2$ )	50	Depositor
Minimum defocus (nm)	Not provided	
Maximum defocus (nm)	Not provided	
Magnification	Not provided	
Image detector	GATAN K2 SUMMIT (4k x 4k)	Depositor
Maximum map value	0.049	Depositor
Minimum map value	-0.020	Depositor
Average map value	-0.000	Depositor
Map value standard deviation	0.001	Depositor
Recommended contour level	0.0126	Depositor
Map size (Å)	296.0, 296.0, 296.0	wwPDB
Map dimensions	296, 296, 296	wwPDB
Map angles (°)	90.0, 90.0, 90.0	wwPDB
Pixel spacing (Å)	1.0, 1.0, 1.0	Depositor



## 5 Model quality i

### 5.1 Standard geometry i

The Z score for a bond length (or angle) is the number of standard deviations the observed value is removed from the expected value. A bond length (or angle) with  $|Z| > 5$  is considered an outlier worth inspection. RMSZ is the root-mean-square of all Z scores of the bond lengths (or angles).

Mol	Chain	Bond lengths		Bond angles	
		RMSZ	# Z  >5	RMSZ	# Z  >5
1	A	0.54	2/5698 (0.0%)	0.69	12/7734 (0.2%)
2	B	0.48	0/2812	0.64	2/3835 (0.1%)
3	C	0.36	0/349	0.66	0/475
4	D	0.48	0/1801	0.51	0/2447
5	E	0.43	0/700	0.58	0/955
All	All	0.50	2/11360 (0.0%)	0.64	14/15446 (0.1%)

Chiral center outliers are detected by calculating the chiral volume of a chiral center and verifying if the center is modelled as a planar moiety or with the opposite hand. A planarity outlier is detected by checking planarity of atoms in a peptide group, atoms in a mainchain group or atoms of a sidechain that are expected to be planar.

Mol	Chain	#Chirality outliers	#Planarity outliers
1	A	0	3
2	B	0	3
3	C	0	2
4	D	0	1
5	E	0	1
All	All	0	10

All (2) bond length outliers are listed below:

Mol	Chain	Res	Type	Atoms	Z	Observed(Å)	Ideal(Å)
1	A	442	ALA	C-N	13.22	1.56	1.33
1	A	446	GLN	C-N	5.31	1.46	1.34

All (14) bond angle outliers are listed below:

Mol	Chain	Res	Type	Atoms	Z	Observed(°)	Ideal(°)
1	A	423	THR	CA-C-N	12.54	141.28	116.20
1	A	423	THR	O-C-N	-12.22	102.43	123.20
1	A	423	THR	C-N-CA	10.31	143.95	122.30
1	A	463	ASN	CB-CA-C	-8.34	93.71	110.40

*Continued on next page...*

Continued from previous page...

Mol	Chain	Res	Type	Atoms	Z	Observed(°)	Ideal(°)
1	A	440	PHE	N-CA-CB	8.08	125.15	110.60
1	A	424	GLY	N-CA-C	-8.04	93.00	113.10
1	A	439	SER	N-CA-C	-7.41	91.00	111.00
1	A	805	ASN	CB-CA-C	6.63	123.67	110.40
2	B	63	LEU	C-N-CA	-6.33	105.88	121.70
2	B	354	GLY	N-CA-C	-5.76	98.71	113.10
1	A	446	GLN	O-C-N	5.10	130.86	122.70
1	A	439	SER	CB-CA-C	5.10	119.78	110.10
1	A	464	ASP	N-CA-CB	5.07	119.73	110.60
1	A	442	ALA	O-C-N	5.04	131.78	123.20

There are no chirality outliers.

All (10) planarity outliers are listed below:

Mol	Chain	Res	Type	Group
1	A	421	ARG	Sidechain
1	A	491	TYR	Peptide
1	A	739	TRP	Peptide
2	B	255	ASN	Peptide
2	B	285	SER	Peptide
2	B	386	THR	Peptide
3	C	38	ASP	Peptide
3	C	60	VAL	Peptide
4	D	205	TYR	Peptide
5	E	35	GLY	Peptide

## 5.2 Too-close contacts

In the following table, the Non-H and H(model) columns list the number of non-hydrogen atoms and hydrogen atoms in the chain respectively. The H(added) column lists the number of hydrogen atoms added and optimized by MolProbity. The Clashes column lists the number of clashes within the asymmetric unit, whereas Symm-Clashes lists symmetry-related clashes.

Mol	Chain	Non-H	H(model)	H(added)	Clashes	Symm-Clashes
1	A	5567	0	5260	656	0
2	B	2762	0	2707	341	0
3	C	343	0	341	37	0
4	D	1761	0	1699	141	0
5	E	685	0	666	76	0
All	All	11118	0	10673	1201	0

The all-atom clashscore is defined as the number of clashes found per 1000 atoms (including hydrogen atoms). The all-atom clashscore for this structure is 55.

All (1201) close contacts within the same asymmetric unit are listed below, sorted by their clash magnitude.

Atom-1	Atom-2	Interatomic distance (Å)	Clash overlap (Å)
1:A:395:PHE:HA	1:A:420:GLU:CB	1.20	1.65
1:A:396:GLU:N	1:A:420:GLU:HA	1.30	1.45
1:A:395:PHE:CA	1:A:420:GLU:CB	2.04	1.32
1:A:433:GLY:N	1:A:438:VAL:HG21	1.60	1.16
1:A:431:GLY:O	1:A:438:VAL:HG13	1.47	1.14
1:A:784:VAL:CG1	1:A:806:ILE:HB	1.79	1.11
1:A:395:PHE:C	1:A:420:GLU:HA	1.73	1.08
1:A:396:GLU:N	1:A:420:GLU:CA	2.19	1.04
1:A:784:VAL:HG13	1:A:806:ILE:HB	1.43	1.00
1:A:433:GLY:HA3	1:A:664:GLN:NE2	1.77	0.98
2:B:152:LEU:HB3	2:B:197:GLU:HG3	1.46	0.97
1:A:626:LYS:HB3	1:A:721:PRO:HG3	1.50	0.94
4:D:184:TYR:OH	4:D:188:ARG:NH2	1.99	0.94
1:A:784:VAL:HG11	1:A:806:ILE:HB	1.48	0.94
1:A:774:LEU:HB3	1:A:776:TRP:HZ3	1.34	0.92
1:A:396:GLU:HB3	1:A:419:LYS:O	1.70	0.91
1:A:433:GLY:N	1:A:438:VAL:CG2	2.33	0.91
5:E:88:GLN:HG2	5:E:109:ALA:HA	1.50	0.90
1:A:234:GLY:HA2	1:A:296:TYR:HB3	1.53	0.90
2:B:281:ARG:HH11	2:B:313:GLY:H	1.21	0.89
1:A:620:PRO:HA	1:A:628:VAL:HA	1.54	0.88
1:A:433:GLY:H	1:A:438:VAL:HG21	1.31	0.88
1:A:352:ILE:O	1:A:366:ARG:NH2	2.05	0.88
1:A:512:ASP:OD2	1:A:573:ASN:ND2	2.07	0.88
1:A:396:GLU:H	1:A:420:GLU:HA	1.35	0.87
1:A:504:TYR:HA	1:A:539:MET:HG3	1.56	0.86
2:B:48:TRP:HE1	2:B:50:THR:HG22	1.41	0.85
1:A:189:THR:HG22	1:A:192:GLU:H	1.40	0.84
1:A:321:ARG:NH2	1:A:322:VAL:O	2.12	0.83
2:B:220:LEU:HB3	2:B:225:GLN:H	1.43	0.83
1:A:737:PHE:HA	1:A:772:ILE:HA	1.61	0.83
2:B:367:PHE:HB3	2:B:382:ALA:HA	1.59	0.82
3:C:80:LEU:HD21	4:D:162:ASP:HB3	1.61	0.82
1:A:463:ASN:O	1:A:465:TYR:N	2.13	0.81
1:A:194:ILE:O	1:A:200:ARG:NH1	2.14	0.81
5:E:42:ASP:OD1	5:E:45:LYS:NZ	2.13	0.81
2:B:158:SER:HB3	2:B:161:LEU:HB2	1.62	0.81

*Continued on next page...*

*Continued from previous page...*

Atom-1	Atom-2	Interatomic distance (Å)	Clash overlap (Å)
1:A:395:PHE:C	1:A:420:GLU:CA	2.48	0.80
4:D:212:ARG:NH1	4:D:241:ASN:O	2.14	0.80
1:A:475:ASN:N	1:A:485:LEU:O	2.13	0.80
1:A:538:ASN:ND2	1:A:562:ASP:O	2.15	0.80
3:C:56:MET:HA	5:E:68:PHE:HB2	1.64	0.80
2:B:67:LEU:HD21	2:B:374:ALA:HB3	1.62	0.79
1:A:488:ARG:O	1:A:511:THR:OG1	1.99	0.79
1:A:784:VAL:HG11	1:A:806:ILE:CB	2.12	0.79
1:A:429:GLY:CA	1:A:805:ASN:OD1	2.31	0.79
1:A:367:ARG:NH1	1:A:479:THR:O	2.14	0.78
1:A:537:SER:HA	1:A:564:SER:HA	1.63	0.78
1:A:677:HIS:ND1	1:A:691:ALA:O	2.16	0.78
4:D:42:LYS:HB2	4:D:51:ALA:HB2	1.65	0.78
5:E:51:THR:N	5:E:54:GLN:OE1	2.15	0.78
1:A:351:LYS:H	1:A:413:ASP:CG	1.86	0.78
1:A:450:LEU:HB2	1:A:452:THR:HG23	1.64	0.78
1:A:186:HIS:N	1:A:262:GLU:OE1	2.17	0.78
1:A:656:GLY:O	1:A:803:GLN:NE2	2.17	0.78
1:A:471:LEU:N	1:A:489:LEU:O	2.17	0.78
1:A:371:GLN:NE2	1:A:372:MET:O	2.17	0.77
2:B:236:THR:HA	2:B:240:GLU:HA	1.64	0.77
4:D:162:ASP:OD1	4:D:163:ALA:N	2.14	0.77
1:A:162:ARG:HD3	4:D:61:ARG:HG3	1.67	0.77
1:A:547:ARG:NH2	1:A:746:ASP:OD2	2.17	0.77
1:A:203:VAL:H	1:A:212:ARG:HH21	1.30	0.77
1:A:392:LEU:HG	1:A:394:PHE:H	1.45	0.77
2:B:281:ARG:HG3	2:B:313:GLY:HA3	1.65	0.77
5:E:26:VAL:O	5:E:83:HIS:NE2	2.17	0.77
2:B:298:LEU:HD21	2:B:306:MET:H	1.49	0.76
1:A:432:TYR:C	1:A:438:VAL:HG21	2.06	0.76
3:C:50:LEU:HB2	4:D:206:PRO:HB2	1.68	0.76
5:E:94:THR:OG1	5:E:103:ASN:N	2.19	0.76
1:A:389:LEU:HD23	1:A:398:VAL:HG23	1.67	0.76
1:A:547:ARG:HH12	1:A:749:TRP:HA	1.51	0.76
1:A:630:LEU:HB2	1:A:717:GLU:HB2	1.67	0.76
1:A:445:GLN:NE2	1:A:447:ASP:H	1.82	0.76
1:A:535:SER:HA	1:A:566:LYS:HA	1.65	0.76
1:A:608:TYR:HA	1:A:641:LEU:H	1.51	0.76
1:A:94:ILE:N	1:A:123:GLU:O	2.20	0.75
1:A:202:GLU:O	1:A:207:ASN:ND2	2.20	0.75
1:A:691:ALA:HA	1:A:696:ALA:HB1	1.66	0.75

*Continued on next page...*

*Continued from previous page...*

Atom-1	Atom-2	Interatomic distance (Å)	Clash overlap (Å)
1:A:784:VAL:CG1	1:A:806:ILE:CB	2.61	0.75
1:A:201:ASP:O	1:A:212:ARG:NH2	2.20	0.75
2:B:320:SER:HB3	2:B:323:LEU:HD13	1.69	0.75
1:A:309:LYS:HG2	1:A:320:PRO:HG2	1.67	0.75
2:B:186:ASN:OD1	2:B:187:LEU:N	2.20	0.75
1:A:229:TYR:O	1:A:233:ARG:NH1	2.20	0.74
2:B:354:GLY:O	2:B:355:ARG:NH1	2.20	0.74
2:B:34:PRO:HA	2:B:325:ARG:HH21	1.53	0.74
2:B:175:ASN:HB3	2:B:180:ALA:H	1.52	0.74
2:B:285:SER:O	2:B:301:GLN:N	2.18	0.74
1:A:789:GLN:HE22	1:A:791:PHE:HB2	1.52	0.74
1:A:762:ASP:O	1:A:765:ASN:ND2	2.21	0.74
2:B:248:ASP:OD2	2:B:289:PHE:N	2.21	0.74
4:D:93:ASP:HA	4:D:96:ILE:HD12	1.68	0.74
1:A:568:ASP:N	1:A:605:ASP:OD2	2.16	0.74
1:A:111:LYS:NZ	1:A:111:LYS:O	2.21	0.73
1:A:673:VAL:HG22	1:A:702:SER:H	1.51	0.73
1:A:720:THR:O	1:A:735:THR:OG1	2.05	0.73
1:A:739:TRP:HA	1:A:770:ALA:HA	1.69	0.73
2:B:35:LEU:HD22	2:B:38:VAL:HG22	1.69	0.73
2:B:194:LEU:HD21	2:B:236:THR:H	1.51	0.73
2:B:236:THR:HG23	2:B:240:GLU:HG3	1.71	0.73
1:A:311:LEU:HD12	1:A:314:ARG:HH12	1.53	0.73
2:B:197:GLU:O	2:B:249:THR:OG1	2.06	0.73
2:B:377:LYS:NZ	2:B:378:LEU:O	2.22	0.73
1:A:433:GLY:CA	1:A:664:GLN:NE2	2.50	0.72
5:E:46:ILE:O	5:E:47:ARG:NH1	2.19	0.72
1:A:90:GLU:HG3	1:A:92:PRO:HD2	1.71	0.72
2:B:67:LEU:HA	2:B:72:VAL:HA	1.71	0.72
1:A:473:VAL:O	1:A:487:GLY:N	2.22	0.72
1:A:709:ASN:ND2	1:A:746:ASP:OD1	2.21	0.72
1:A:720:THR:N	1:A:735:THR:O	2.18	0.72
1:A:430:ILE:HD13	1:A:430:ILE:N	2.05	0.72
3:C:41:TYR:HB3	4:D:165:LYS:HB3	1.72	0.72
2:B:85:ASN:ND2	2:B:88:ASP:OD1	2.22	0.72
1:A:410:ASP:OD2	5:E:61:THR:N	2.20	0.72
1:A:386:LYS:HD3	1:A:400:THR:HB	1.72	0.72
1:A:736:SER:O	1:A:773:ALA:N	2.23	0.72
1:A:247:LEU:O	2:B:243:ARG:NH2	2.22	0.72
1:A:678:GLN:NE2	1:A:692:THR:O	2.23	0.71
1:A:396:GLU:H	1:A:420:GLU:CA	1.96	0.71

*Continued on next page...*

*Continued from previous page...*

Atom-1	Atom-2	Interatomic distance (Å)	Clash overlap (Å)
2:B:346:LEU:O	2:B:359:GLN:NE2	2.22	0.71
1:A:110:LEU:HD23	1:A:137:LEU:HD12	1.71	0.71
1:A:271:VAL:HA	1:A:337:LEU:HB3	1.72	0.71
2:B:158:SER:N	2:B:161:LEU:O	2.23	0.71
5:E:80:GLN:HB2	5:E:86:VAL:HA	1.73	0.71
1:A:180:ILE:HA	1:A:256:VAL:HB	1.73	0.70
4:D:109:MET:HG2	4:D:150:LEU:HD13	1.73	0.70
1:A:738:PHE:HZ	1:A:787:TYR:H	1.38	0.70
4:D:212:ARG:NH2	4:D:241:ASN:OD1	2.24	0.70
1:A:542:GLN:O	1:A:546:TRP:HD1	1.73	0.70
5:E:80:GLN:HG2	5:E:82:GLY:H	1.56	0.70
1:A:142:TYR:HB2	1:A:147:TYR:HD1	1.56	0.70
1:A:430:ILE:HD13	1:A:430:ILE:H	1.56	0.70
1:A:624:ASP:O	1:A:626:LYS:NZ	2.24	0.70
5:E:66:ASP:OD1	5:E:69:GLY:N	2.20	0.70
1:A:92:PRO:HA	1:A:125:LEU:H	1.56	0.70
4:D:217:LEU:HA	4:D:220:ASN:HD21	1.57	0.70
1:A:376:TRP:CZ3	5:E:35:GLY:HA3	2.27	0.69
2:B:183:TRP:HD1	2:B:185:VAL:H	1.40	0.69
1:A:185:ASN:ND2	1:A:188:PHE:O	2.22	0.69
1:A:541:PRO:HA	1:A:546:TRP:HE1	1.56	0.69
2:B:215:ARG:HD3	2:B:231:ARG:HB2	1.74	0.69
5:E:32:ILE:O	5:E:79:GLN:NE2	2.25	0.69
1:A:276:ASN:HB3	1:A:342:ASP:HA	1.73	0.69
1:A:395:PHE:C	1:A:420:GLU:CB	2.60	0.69
1:A:784:VAL:O	1:A:805:ASN:O	2.10	0.69
2:B:277:ILE:HG21	2:B:280:LYS:HE3	1.74	0.69
1:A:738:PHE:O	1:A:771:GLY:N	2.20	0.69
4:D:201:MET:O	4:D:205:TYR:N	2.23	0.69
1:A:286:GLN:HG3	1:A:289:LYS:HE2	1.75	0.69
1:A:181:ASN:HD21	2:B:128:LYS:HD3	1.57	0.69
1:A:350:ARG:N	1:A:413:ASP:OD1	2.23	0.69
1:A:161:ASN:ND2	4:D:61:ARG:O	2.25	0.69
2:B:174:LEU:HB3	2:B:179:GLY:HA2	1.74	0.69
1:A:600:THR:OG1	1:A:608:TYR:O	2.11	0.69
1:A:432:TYR:C	1:A:438:VAL:CG2	2.60	0.68
1:A:535:SER:OG	1:A:566:LYS:NZ	2.19	0.68
1:A:185:ASN:HD22	1:A:190:THR:HG22	1.57	0.68
1:A:492:ASN:O	1:A:508:SER:N	2.24	0.68
1:A:676:PRO:HD3	1:A:699:LEU:HG	1.75	0.68
1:A:711:MET:HG3	1:A:744:VAL:HG22	1.76	0.68

*Continued on next page...*

*Continued from previous page...*

Atom-1	Atom-2	Interatomic distance (Å)	Clash overlap (Å)
2:B:287:ASN:N	2:B:299:VAL:O	2.18	0.68
5:E:28:TYR:O	5:E:29:ARG:NH1	2.27	0.68
5:E:44:SER:HA	5:E:47:ARG:HH22	1.59	0.68
1:A:658:SER:O	1:A:661:ARG:NH1	2.27	0.68
1:A:383:ASP:OD1	1:A:386:LYS:NZ	2.21	0.68
1:A:246:SER:HA	2:B:193:SER:HB2	1.76	0.68
4:D:230:GLN:HA	4:D:233:LYS:HD2	1.74	0.67
1:A:662:GLY:HA3	1:A:788:ALA:HB3	1.76	0.67
1:A:597:GLY:HA2	1:A:611:VAL:HG23	1.76	0.67
1:A:806:ILE:HD13	1:A:806:ILE:O	1.94	0.67
1:A:404:ARG:NH1	1:A:405:VAL:O	2.26	0.67
1:A:448:ASN:HA	1:A:454:TYR:O	1.94	0.67
1:A:638:GLY:N	1:A:709:ASN:O	2.28	0.67
2:B:135:ASN:HB3	2:B:140:THR:HB	1.77	0.67
2:B:199:ALA:N	2:B:249:THR:O	2.22	0.67
2:B:279:TRP:CD2	2:B:312:GLY:HA2	2.30	0.67
2:B:384:ASP:N	2:B:384:ASP:OD1	2.25	0.67
1:A:475:ASN:HB3	1:A:485:LEU:HB3	1.76	0.66
2:B:336:ASN:HD21	2:B:348:TRP:HB3	1.60	0.66
1:A:496:ALA:HB3	1:A:505:THR:HG22	1.76	0.66
1:A:752:SER:OG	1:A:753:GLN:NE2	2.28	0.66
1:A:619:VAL:O	1:A:629:VAL:N	2.24	0.66
2:B:266:ASN:HB3	2:B:282:GLU:HA	1.76	0.66
2:B:262:ALA:HB3	2:B:266:ASN:N	2.11	0.66
1:A:394:PHE:CE2	1:A:448:ASN:HB3	2.31	0.66
1:A:178:GLN:HE22	1:A:254:ILE:N	1.94	0.66
1:A:419:LYS:O	1:A:419:LYS:HD2	1.96	0.66
1:A:471:LEU:O	1:A:489:LEU:N	2.28	0.66
1:A:677:HIS:HE1	1:A:680:SER:HB3	1.61	0.66
2:B:31:LYS:NZ	2:B:32:MET:O	2.28	0.66
1:A:404:ARG:HH12	1:A:408:SER:H	1.41	0.66
1:A:774:LEU:HB3	1:A:776:TRP:CZ3	2.25	0.66
2:B:255:ASN:O	2:B:257:VAL:N	2.29	0.66
1:A:248:THR:O	1:A:250:ASP:N	2.26	0.66
2:B:267:LEU:HD13	2:B:281:ARG:HB2	1.78	0.66
2:B:273:ARG:HD3	2:B:273:ARG:H	1.61	0.66
1:A:322:VAL:HG22	1:A:342:ASP:H	1.60	0.65
1:A:519:ILE:HG13	1:A:525:LEU:H	1.62	0.65
2:B:230:GLN:NE2	2:B:231:ARG:O	2.29	0.65
4:D:216:PRO:O	4:D:220:ASN:ND2	2.29	0.65
1:A:794:TYR:N	1:A:797:ASP:OD2	2.26	0.65

*Continued on next page...*

*Continued from previous page...*

Atom-1	Atom-2	Interatomic distance (Å)	Clash overlap (Å)
1:A:512:ASP:OD1	1:A:513:VAL:N	2.27	0.65
1:A:176:GLU:HG3	1:A:212:ARG:HG3	1.78	0.65
2:B:286:VAL:HA	2:B:300:ASP:HA	1.79	0.65
1:A:146:LYS:HA	1:A:175:ALA:H	1.62	0.65
1:A:752:SER:O	1:A:755:SER:OG	2.12	0.65
4:D:66:PRO:O	4:D:69:GLN:HG3	1.96	0.65
4:D:58:LEU:HD23	4:D:71:VAL:HG21	1.79	0.65
5:E:64:MET:HB2	5:E:74:PHE:HB2	1.78	0.65
1:A:198:GLN:N	1:A:222:ASP:OD1	2.29	0.65
1:A:322:VAL:HG22	1:A:341:VAL:HA	1.79	0.65
1:A:445:GLN:OE1	1:A:447:ASP:N	2.30	0.65
1:A:594:ASN:HB2	1:A:614:ASP:HB3	1.78	0.65
1:A:94:ILE:HD13	1:A:119:VAL:HG13	1.77	0.65
2:B:76:ASP:CG	2:B:80:LEU:H	2.01	0.65
1:A:232:ASP:OD2	1:A:233:ARG:NH1	2.30	0.64
2:B:363:ASP:OD1	2:B:364:SER:N	2.31	0.64
4:D:222:TYR:HD1	4:D:227:MET:HB2	1.62	0.64
1:A:396:GLU:CB	1:A:419:LYS:O	2.44	0.64
4:D:138:GLN:N	4:D:138:GLN:OE1	2.30	0.64
4:D:193:ALA:O	4:D:197:ARG:HG2	1.96	0.64
4:D:214:ALA:O	4:D:217:LEU:N	2.30	0.64
1:A:445:GLN:CD	1:A:447:ASP:H	2.00	0.64
1:A:479:THR:HG23	1:A:481:ASP:H	1.60	0.64
4:D:59:ASP:O	4:D:63:PRO:HB3	1.97	0.64
2:B:175:ASN:HD21	2:B:177:ALA:HB3	1.61	0.64
2:B:223:GLN:O	2:B:225:GLN:NE2	2.30	0.64
4:D:165:LYS:HA	4:D:168:VAL:HG12	1.78	0.64
1:A:94:ILE:O	1:A:122:GLY:N	2.30	0.64
2:B:175:ASN:HB2	2:B:182:LYS:HZ1	1.62	0.64
2:B:330:PRO:HB2	2:B:337:LEU:HD11	1.80	0.64
2:B:70:ASN:HA	2:B:86:ALA:HB3	1.78	0.64
1:A:134:GLU:HG2	1:A:151:VAL:HG23	1.79	0.64
1:A:190:THR:O	1:A:193:LEU:N	2.31	0.64
2:B:195:ARG:H	2:B:243:ARG:HH12	1.45	0.64
2:B:264:ASN:O	2:B:285:SER:HA	1.98	0.64
5:E:90:THR:O	5:E:107:LYS:N	2.31	0.64
1:A:660:VAL:HG12	1:A:661:ARG:H	1.62	0.64
1:A:677:HIS:NE2	1:A:679:ALA:O	2.31	0.64
1:A:770:ALA:O	1:A:789:GLN:N	2.31	0.64
1:A:114:LEU:HD22	1:A:119:VAL:HB	1.79	0.63
1:A:474:THR:HA	1:A:486:GLY:HA2	1.79	0.63

*Continued on next page...*



*Continued from previous page...*

Atom-1	Atom-2	Interatomic distance (Å)	Clash overlap (Å)
1:A:736:SER:H	1:A:773:ALA:HB3	1.61	0.63
1:A:618:TYR:CZ	1:A:630:LEU:HD22	2.32	0.63
5:E:73:TRP:O	5:E:93:LEU:N	2.28	0.63
1:A:460:GLY:HA2	1:A:469:ALA:HA	1.80	0.63
1:A:678:GLN:NE2	1:A:695:GLY:O	2.27	0.63
2:B:150:GLU:HG2	2:B:167:SER:HB3	1.80	0.63
2:B:319:GLN:NE2	2:B:321:ASP:OD2	2.22	0.63
1:A:225:THR:O	1:A:228:SER:OG	2.16	0.63
1:A:608:TYR:HB2	1:A:640:GLY:HA2	1.80	0.63
1:A:429:GLY:HA2	1:A:805:ASN:OD1	1.98	0.63
1:A:622:ASP:HB3	1:A:627:TRP:H	1.64	0.63
2:B:68:ALA:N	2:B:71:VAL:O	2.26	0.63
1:A:448:ASN:HD21	1:A:453:GLY:H	1.45	0.62
2:B:281:ARG:HB3	2:B:283:LEU:HG	1.81	0.62
1:A:506:ASN:OD1	1:A:508:SER:OG	2.15	0.62
1:A:630:LEU:N	1:A:717:GLU:O	2.31	0.62
1:A:429:GLY:N	1:A:805:ASN:OD1	2.31	0.62
1:A:405:VAL:N	1:A:411:GLN:O	2.31	0.62
1:A:590:GLY:O	1:A:617:THR:OG1	2.06	0.62
4:D:113:GLY:HA3	4:D:147:PHE:HE1	1.64	0.62
1:A:194:ILE:O	1:A:197:PHE:N	2.25	0.62
2:B:40:ASN:HA	2:B:358:ALA:HA	1.80	0.62
1:A:574:TYR:N	1:A:597:GLY:O	2.32	0.62
4:D:137:PRO:HG3	4:D:177:TYR:CZ	2.34	0.62
1:A:457:GLY:N	1:A:472:SER:O	2.31	0.62
1:A:628:VAL:HB	1:A:719:ILE:HD12	1.82	0.62
2:B:296:ILE:HD11	2:B:310:ILE:HA	1.80	0.62
4:D:150:LEU:HD12	4:D:154:TYR:HB2	1.82	0.62
1:A:98:THR:OG1	1:A:166:LYS:HA	2.00	0.62
1:A:224:GLU:OE1	1:A:227:ARG:NE	2.32	0.62
2:B:175:ASN:ND2	2:B:178:ASP:OD1	2.33	0.62
2:B:67:LEU:HD23	2:B:379:LEU:HD11	1.82	0.62
1:A:458:ILE:HG13	1:A:471:LEU:HG	1.81	0.62
1:A:217:GLN:N	1:A:217:GLN:OE1	2.22	0.61
2:B:372:VAL:O	2:B:379:LEU:N	2.31	0.61
1:A:95:ALA:HB3	1:A:163:VAL:HG22	1.81	0.61
2:B:48:TRP:HD1	2:B:50:THR:H	1.47	0.61
1:A:91:ARG:NH1	1:A:127:ARG:HE	1.98	0.61
1:A:120:ARG:NH1	1:A:121:VAL:O	2.32	0.61
1:A:154:VAL:HB	1:A:166:LYS:H	1.65	0.61
1:A:354:PHE:CE2	1:A:365:LEU:HB3	2.36	0.61

*Continued on next page...*

*Continued from previous page...*

Atom-1	Atom-2	Interatomic distance (Å)	Clash overlap (Å)
2:B:254:VAL:HB	2:B:259:PHE:HE2	1.65	0.61
2:B:333:TYR:N	2:B:336:ASN:O	2.32	0.61
1:A:151:VAL:HG12	1:A:169:PHE:HA	1.82	0.61
1:A:357:ASN:O	1:A:360:SER:N	2.27	0.61
1:A:152:LYS:HB3	1:A:168:VAL:HB	1.82	0.61
1:A:762:ASP:OD1	1:A:765:ASN:ND2	2.34	0.61
5:E:91:LEU:HA	5:E:106:ASN:HA	1.82	0.61
2:B:308:LEU:HD23	2:B:315:THR:HA	1.83	0.61
1:A:670:PRO:HD2	1:A:707:GLY:HA2	1.82	0.61
2:B:363:ASP:OD1	2:B:365:SER:N	2.32	0.61
3:C:60:VAL:O	3:C:62:SER:N	2.34	0.61
5:E:64:MET:N	5:E:64:MET:SD	2.74	0.61
5:E:77:PHE:HB3	5:E:89:GLN:HB3	1.83	0.61
5:E:91:LEU:HD12	5:E:106:ASN:HB2	1.83	0.61
1:A:203:VAL:H	1:A:212:ARG:NH2	1.98	0.60
1:A:477:TYR:CD1	1:A:482:GLY:HA2	2.36	0.60
5:E:91:LEU:HD21	5:E:104:ILE:HG13	1.82	0.60
1:A:459:ASN:O	1:A:470:GLU:N	2.33	0.60
3:C:84:PRO:HD3	4:D:77:TYR:CE2	2.36	0.60
1:A:394:PHE:HE2	1:A:448:ASN:HB3	1.67	0.60
1:A:569:ASP:HA	1:A:604:SER:HB2	1.83	0.60
1:A:637:TYR:OH	1:A:639:ASP:OD2	2.19	0.60
2:B:220:LEU:HD21	2:B:222:GLU:HB3	1.83	0.60
4:D:82:ASN:ND2	4:D:84:ASP:OD2	2.34	0.60
1:A:348:TYR:HB3	1:A:412:VAL:HB	1.83	0.60
1:A:186:HIS:H	1:A:262:GLU:CD	2.04	0.60
1:A:463:ASN:O	1:A:464:ASP:C	2.40	0.60
2:B:307:ALA:N	2:B:317:TRP:O	2.33	0.60
1:A:534:ASN:O	1:A:567:THR:N	2.27	0.60
1:A:576:TRP:HB3	1:A:595:LEU:HD23	1.84	0.60
1:A:617:THR:O	1:A:631:GLY:N	2.33	0.60
2:B:116:THR:OG1	2:B:155:PRO:O	2.13	0.60
2:B:48:TRP:HE1	2:B:50:THR:CG2	2.12	0.60
1:A:158:LEU:HB2	1:A:163:VAL:HA	1.84	0.60
1:A:271:VAL:HG12	1:A:337:LEU:HD23	1.82	0.60
1:A:445:GLN:HE22	1:A:447:ASP:H	1.47	0.60
2:B:100:LYS:HA	2:B:106:LYS:HD3	1.83	0.60
1:A:542:GLN:NE2	1:A:545:MET:HG3	2.16	0.59
2:B:48:TRP:NE1	2:B:50:THR:HG22	2.15	0.59
2:B:218:ALA:HB2	2:B:228:TRP:CE2	2.38	0.59
2:B:304:ARG:HB3	2:B:320:SER:HA	1.84	0.59

*Continued on next page...*

*Continued from previous page...*

Atom-1	Atom-2	Interatomic distance (Å)	Clash overlap (Å)
1:A:221:GLY:O	1:A:225:THR:OG1	2.19	0.59
1:A:323:GLN:O	1:A:340:ASN:N	2.35	0.59
1:A:692:THR:HG23	1:A:694:ASP:H	1.67	0.59
4:D:175:ALA:HB1	4:D:210:ALA:HB3	1.84	0.59
1:A:352:ILE:N	1:A:373:GLU:OE2	2.36	0.59
1:A:733:VAL:HG22	1:A:775:GLN:HG2	1.82	0.59
1:A:142:TYR:HB2	1:A:147:TYR:CD1	2.37	0.59
1:A:630:LEU:HD21	1:A:719:ILE:HG13	1.83	0.59
2:B:261:LEU:HD21	2:B:286:VAL:HB	1.84	0.59
5:E:107:LYS:HD2	5:E:108:PRO:HD2	1.84	0.59
1:A:536:LEU:O	1:A:565:PHE:N	2.30	0.59
1:A:130:ILE:HG13	1:A:153:ALA:HB3	1.83	0.59
1:A:431:GLY:O	1:A:438:VAL:CG1	2.39	0.59
1:A:522:TYR:OH	1:A:580:LYS:NZ	2.36	0.59
1:A:574:TYR:CE2	1:A:597:GLY:HA3	2.38	0.59
2:B:161:LEU:HD22	2:B:182:LYS:HG3	1.84	0.59
1:A:311:LEU:O	1:A:314:ARG:NH1	2.36	0.59
1:A:383:ASP:O	1:A:386:LYS:N	2.35	0.59
2:B:156:VAL:O	2:B:163:LEU:N	2.35	0.59
1:A:367:ARG:HD2	1:A:477:TYR:CD2	2.37	0.59
1:A:367:ARG:HH22	1:A:480:VAL:HA	1.68	0.59
1:A:618:TYR:CE1	1:A:630:LEU:HD22	2.37	0.59
1:A:735:THR:HA	1:A:773:ALA:O	2.03	0.59
4:D:49:ARG:O	4:D:53:THR:HG23	2.03	0.59
1:A:352:ILE:HG12	1:A:373:GLU:OE2	2.02	0.58
1:A:459:ASN:N	1:A:470:GLU:O	2.19	0.58
1:A:743:THR:HG23	1:A:745:TRP:HZ3	1.68	0.58
2:B:42:PHE:H	2:B:392:ARG:HH22	1.51	0.58
2:B:195:ARG:HB3	2:B:197:GLU:OE1	2.03	0.58
5:E:107:LYS:NZ	5:E:108:PRO:O	2.36	0.58
1:A:550:TYR:CE1	1:A:556:PRO:HD2	2.39	0.58
1:A:653:TYR:CD1	1:A:666:ASN:HB3	2.39	0.58
2:B:183:TRP:CD1	2:B:185:VAL:HG23	2.38	0.58
2:B:286:VAL:HG11	2:B:298:LEU:HB2	1.84	0.58
4:D:112:ARG:NE	4:D:146:ASP:OD1	2.36	0.58
1:A:91:ARG:O	1:A:125:LEU:HB3	2.03	0.58
1:A:143:SER:O	1:A:215:GLN:NE2	2.28	0.58
1:A:403:GLN:NE2	1:A:404:ARG:O	2.36	0.58
1:A:494:PHE:CZ	1:A:506:ASN:HB3	2.39	0.58
1:A:181:ASN:ND2	2:B:127:GLU:O	2.37	0.58
4:D:125:GLN:HB3	4:D:130:VAL:HG21	1.85	0.58

*Continued on next page...*

*Continued from previous page...*

Atom-1	Atom-2	Interatomic distance (Å)	Clash overlap (Å)
1:A:374:GLY:O	5:E:34:GLN:NE2	2.36	0.58
1:A:397:THR:HG22	1:A:399:ASP:H	1.68	0.58
1:A:432:TYR:CA	1:A:438:VAL:HG21	2.33	0.58
1:A:638:GLY:HA3	1:A:709:ASN:HB2	1.86	0.58
1:A:749:TRP:HB3	1:A:761:SER:OG	2.04	0.58
1:A:791:PHE:O	1:A:793:LYS:N	2.31	0.58
2:B:298:LEU:H	2:B:305:VAL:HG23	1.69	0.58
4:D:131:ASP:OD1	4:D:133:SER:N	2.25	0.58
2:B:35:LEU:HD21	2:B:359:GLN:HG2	1.85	0.58
1:A:456:VAL:HG12	1:A:473:VAL:HA	1.84	0.57
2:B:71:VAL:HA	2:B:84:LEU:O	2.04	0.57
1:A:351:LYS:HE2	4:D:197:ARG:NH2	2.19	0.57
1:A:539:MET:HE2	1:A:539:MET:H	1.70	0.57
2:B:167:SER:OG	2:B:168:ASN:N	2.38	0.57
2:B:344:GLY:O	2:B:362:VAL:N	2.36	0.57
1:A:141:TYR:HD1	1:A:146:LYS:HD3	1.70	0.57
1:A:432:TYR:CA	1:A:438:VAL:CG2	2.83	0.57
2:B:68:ALA:HB2	2:B:117:VAL:HG11	1.86	0.57
2:B:85:ASN:HD21	2:B:87:ASP:HB2	1.68	0.57
1:A:202:GLU:C	1:A:204:PRO:HD3	2.25	0.57
1:A:246:SER:HB3	1:A:255:TYR:HB2	1.86	0.57
4:D:137:PRO:HG3	4:D:177:TYR:CE2	2.39	0.57
3:C:83:ARG:NH2	4:D:44:GLN:OE1	2.37	0.57
4:D:42:LYS:HD2	4:D:47:ASN:HB3	1.87	0.57
1:A:373:GLU:HG2	1:A:374:GLY:H	1.70	0.57
1:A:488:ARG:N	1:A:512:ASP:O	2.36	0.57
2:B:331:VAL:O	2:B:337:LEU:HD12	2.05	0.57
4:D:198:VAL:O	4:D:202:LEU:HG	2.05	0.57
5:E:37:TYR:HB2	5:E:77:PHE:HD1	1.68	0.57
1:A:272:GLU:O	1:A:339:VAL:N	2.32	0.57
1:A:691:ALA:HB2	1:A:700:CYS:SG	2.45	0.57
1:A:793:LYS:HG3	1:A:797:ASP:HB2	1.87	0.57
5:E:92:THR:N	5:E:105:ASP:O	2.33	0.57
5:E:32:ILE:HD12	5:E:78:ARG:HH12	1.69	0.57
1:A:701:LYS:HE3	1:A:758:PRO:HG2	1.87	0.57
2:B:40:ASN:ND2	2:B:359:GLN:O	2.28	0.57
2:B:71:VAL:HG12	2:B:73:TYR:CE1	2.39	0.57
2:B:328:THR:HG22	2:B:368:GLN:HA	1.87	0.56
4:D:212:ARG:NH1	4:D:243:SER:OG	2.38	0.56
1:A:784:VAL:HG11	1:A:806:ILE:CG2	2.35	0.56
2:B:81:VAL:C	2:B:82:LYS:HD3	2.25	0.56

*Continued on next page...*

*Continued from previous page...*

Atom-1	Atom-2	Interatomic distance (Å)	Clash overlap (Å)
4:D:131:ASP:OD2	4:D:133:SER:OG	2.23	0.56
4:D:57:ALA:O	4:D:61:ARG:HD3	2.05	0.56
1:A:174:SER:HB3	1:A:213:LYS:NZ	2.20	0.56
1:A:463:ASN:ND2	1:A:466:GLN:O	2.38	0.56
1:A:678:GLN:O	1:A:693:GLN:N	2.38	0.56
2:B:267:LEU:HB2	2:B:281:ARG:H	1.70	0.56
4:D:148:SER:HB3	4:D:152:ARG:HH22	1.70	0.56
1:A:751:SER:HA	1:A:754:TYR:HD2	1.71	0.56
1:A:789:GLN:NE2	1:A:791:PHE:HB2	2.19	0.56
3:C:33:ARG:NH2	4:D:77:TYR:OH	2.39	0.56
3:C:47:LEU:HD11	4:D:168:VAL:HG23	1.87	0.56
4:D:199:GLU:OE2	4:D:203:ARG:NH2	2.39	0.56
1:A:351:LYS:HE2	4:D:197:ARG:HH22	1.71	0.56
1:A:622:ASP:HB2	1:A:627:TRP:HB2	1.88	0.56
1:A:621:ILE:HG23	1:A:627:TRP:HB3	1.88	0.56
1:A:746:ASP:OD1	1:A:748:ASN:N	2.39	0.56
1:A:772:ILE:O	1:A:774:LEU:HG	2.06	0.56
2:B:56:ILE:HD11	2:B:63:LEU:HD22	1.87	0.56
3:C:47:LEU:HB3	4:D:207:ASP:HB2	1.88	0.56
5:E:73:TRP:HB2	5:E:95:PHE:HE2	1.71	0.56
1:A:274:SER:O	1:A:341:VAL:N	2.32	0.56
1:A:441:GLN:CB	1:A:461:THR:HG22	2.36	0.56
1:A:477:TYR:HD1	1:A:482:GLY:HA2	1.71	0.56
2:B:245:SER:O	2:B:247:VAL:N	2.38	0.56
1:A:147:TYR:CE1	2:B:240:GLU:HG2	2.41	0.56
2:B:309:THR:OG1	2:B:314:VAL:HB	2.06	0.56
2:B:344:GLY:H	2:B:366:GLY:HA2	1.71	0.56
4:D:198:VAL:HG21	4:D:218:MET:HB2	1.88	0.56
5:E:73:TRP:O	5:E:92:THR:OG1	2.12	0.56
1:A:550:TYR:CZ	1:A:555:HIS:HA	2.41	0.55
1:A:678:GLN:NE2	1:A:696:ALA:O	2.39	0.55
1:A:784:VAL:CG1	1:A:806:ILE:CG2	2.84	0.55
4:D:158:GLN:HG3	4:D:159:TYR:CZ	2.42	0.55
4:D:191:TRP:HB2	4:D:225:MET:CE	2.36	0.55
1:A:102:ASN:N	1:A:169:PHE:HD2	2.04	0.55
1:A:100:SER:OG	1:A:167:LEU:O	2.23	0.55
1:A:336:LYS:HG3	1:A:337:LEU:H	1.72	0.55
1:A:246:SER:OG	2:B:195:ARG:NE	2.38	0.55
2:B:291:VAL:HB	2:B:296:ILE:HG23	1.88	0.55
2:B:80:LEU:HB3	2:B:82:LYS:HZ2	1.69	0.55
1:A:145:GLY:O	1:A:174:SER:OG	2.24	0.55

*Continued on next page...*

*Continued from previous page...*

Atom-1	Atom-2	Interatomic distance (Å)	Clash overlap (Å)
2:B:202:THR:HG22	2:B:207:ALA:HA	1.86	0.55
2:B:241:ILE:HD12	2:B:264:ASN:HB3	1.88	0.55
2:B:336:ASN:OD1	2:B:337:LEU:N	2.39	0.55
5:E:60:GLY:O	5:E:75:TYR:OH	2.17	0.55
1:A:332:ASP:OD1	1:A:334:THR:N	2.40	0.55
4:D:160:THR:OG1	4:D:161:THR:N	2.39	0.55
1:A:596:THR:OG1	1:A:612:THR:OG1	2.24	0.55
2:B:333:TYR:HD1	2:B:373:ALA:HB1	1.71	0.55
4:D:67:TYR:O	4:D:71:VAL:HG23	2.05	0.55
1:A:750:ASP:N	1:A:754:TYR:HE2	2.04	0.55
4:D:173:ARG:HH12	4:D:177:TYR:HB2	1.72	0.55
4:D:230:GLN:OE1	4:D:233:LYS:NZ	2.30	0.55
1:A:390:ASN:HA	1:A:395:PHE:CE1	2.41	0.55
2:B:341:ASP:OD1	2:B:345:TYR:N	2.38	0.55
4:D:207:ASP:OD1	4:D:208:THR:N	2.39	0.55
5:E:32:ILE:HB	5:E:79:GLN:HA	1.89	0.55
2:B:148:ALA:H	2:B:172:GLN:HE22	1.54	0.55
1:A:325:MET:HB3	1:A:338:ARG:HB2	1.88	0.54
1:A:315:TYR:O	1:A:346:ARG:NH1	2.40	0.54
1:A:354:PHE:HE2	1:A:365:LEU:HB3	1.72	0.54
1:A:423:THR:O	1:A:423:THR:HG22	2.06	0.54
1:A:532:VAL:O	1:A:568:ASP:HA	2.07	0.54
1:A:675:PHE:O	1:A:677:HIS:N	2.39	0.54
2:B:254:VAL:HG12	2:B:255:ASN:H	1.72	0.54
1:A:232:ASP:N	1:A:232:ASP:OD1	2.39	0.54
1:A:178:GLN:NE2	1:A:254:ILE:O	2.40	0.54
1:A:352:ILE:HG22	1:A:414:VAL:HB	1.88	0.54
1:A:110:LEU:H	1:A:110:LEU:HD12	1.72	0.54
1:A:432:TYR:HA	1:A:438:VAL:CG2	2.38	0.54
1:A:367:ARG:NH2	1:A:480:VAL:HA	2.22	0.54
1:A:475:ASN:O	1:A:484:SER:HA	2.07	0.54
1:A:608:TYR:HA	1:A:641:LEU:N	2.20	0.54
2:B:71:VAL:HG13	2:B:92:ILE:HD12	1.88	0.54
2:B:82:LYS:HG3	2:B:94:SER:HB2	1.89	0.54
4:D:113:GLY:HA3	4:D:147:PHE:CE1	2.42	0.54
1:A:242:SER:OG	1:A:243:THR:N	2.40	0.54
1:A:211:ASP:N	1:A:211:ASP:OD1	2.40	0.54
1:A:545:MET:O	1:A:548:TYR:HB3	2.07	0.54
1:A:547:ARG:NH1	1:A:748:ASN:O	2.40	0.54
2:B:32:MET:HG2	2:B:324:HIS:C	2.28	0.54
2:B:48:TRP:HD1	2:B:50:THR:N	2.06	0.54

*Continued on next page...*

*Continued from previous page...*

Atom-1	Atom-2	Interatomic distance (Å)	Clash overlap (Å)
1:A:204:PRO:HD2	1:A:207:ASN:HB3	1.88	0.54
1:A:227:ARG:HG3	1:A:238:PHE:HE2	1.72	0.54
1:A:246:SER:HA	2:B:193:SER:O	2.08	0.54
1:A:349:VAL:HA	1:A:412:VAL:O	2.08	0.54
1:A:492:ASN:HB3	1:A:494:PHE:CE1	2.43	0.54
1:A:569:ASP:OD2	1:A:606:ASN:HB3	2.08	0.54
2:B:365:SER:HB3	2:B:384:ASP:OD1	2.07	0.54
2:B:56:ILE:HB	2:B:383:LYS:O	2.08	0.54
1:A:348:TYR:H	1:A:376:TRP:HA	1.72	0.54
1:A:599:VAL:HG12	1:A:609:TYR:HB2	1.90	0.54
2:B:104:PHE:HB3	2:B:107:GLU:HA	1.90	0.54
1:A:432:TYR:HA	1:A:438:VAL:HG21	1.88	0.54
1:A:525:LEU:HD12	1:A:576:TRP:HB2	1.89	0.54
2:B:345:TYR:CE1	2:B:361:LYS:HB2	2.43	0.54
2:B:349:ILE:HD13	2:B:356:PHE:HA	1.89	0.54
2:B:175:ASN:HB2	2:B:182:LYS:NZ	2.22	0.53
2:B:229:GLN:HG2	2:B:230:GLN:H	1.72	0.53
1:A:246:SER:CA	2:B:193:SER:HB2	2.38	0.53
1:A:615:THR:O	1:A:633:THR:N	2.36	0.53
1:A:493:ASP:HA	1:A:507:LYS:HG3	1.91	0.53
2:B:120:GLY:O	2:B:136:THR:N	2.32	0.53
2:B:158:SER:OG	2:B:221:MET:SD	2.66	0.53
2:B:245:SER:HB3	2:B:301:GLN:HB2	1.89	0.53
2:B:294:ASN:O	2:B:310:ILE:N	2.42	0.53
2:B:342:SER:O	2:B:383:LYS:NZ	2.41	0.53
2:B:341:ASP:HB3	2:B:347:HIS:CE1	2.42	0.53
1:A:98:THR:OG1	1:A:165:LEU:O	2.19	0.53
1:A:733:VAL:HG13	1:A:775:GLN:HG2	1.91	0.53
2:B:279:TRP:HB2	2:B:281:ARG:HH22	1.74	0.53
2:B:55:GLY:O	2:B:77:ARG:HB2	2.08	0.53
3:C:40:ALA:O	3:C:43:GLU:HG3	2.08	0.53
1:A:749:TRP:CD2	1:A:760:TYR:HB2	2.44	0.53
2:B:222:GLU:O	2:B:223:GLN:NE2	2.42	0.53
1:A:494:PHE:O	1:A:507:LYS:N	2.40	0.53
2:B:112:SER:N	2:B:125:GLY:O	2.32	0.53
1:A:288:THR:HG22	1:A:304:MET:HB3	1.91	0.53
1:A:739:TRP:HD1	1:A:770:ALA:HB2	1.74	0.53
2:B:150:GLU:OE1	2:B:150:GLU:N	2.21	0.53
2:B:220:LEU:HD23	2:B:225:GLN:HG2	1.91	0.53
2:B:246:ASP:OD1	2:B:287:ASN:HB3	2.08	0.53
1:A:194:ILE:HA	1:A:197:PHE:CD2	2.44	0.53

*Continued on next page...*

*Continued from previous page...*

Atom-1	Atom-2	Interatomic distance (Å)	Clash overlap (Å)
1:A:395:PHE:CA	1:A:420:GLU:CA	2.81	0.53
1:A:736:SER:O	1:A:772:ILE:HG13	2.09	0.53
2:B:270:LEU:HD22	2:B:275:GLY:HA2	1.91	0.53
2:B:363:ASP:HB2	2:B:388:TYR:HE2	1.74	0.53
4:D:131:ASP:OD1	4:D:132:ARG:N	2.42	0.53
2:B:195:ARG:H	2:B:243:ARG:HH22	1.57	0.53
2:B:247:VAL:HG21	2:B:263:TYR:C	2.29	0.53
2:B:246:ASP:H	2:B:287:ASN:ND2	2.07	0.53
2:B:319:GLN:HB2	2:B:355:ARG:NH1	2.24	0.53
1:A:538:ASN:N	1:A:563:ASN:O	2.29	0.53
1:A:697:LYS:NZ	1:A:698:ASP:OD1	2.32	0.53
1:A:806:ILE:HG23	1:A:806:ILE:O	2.09	0.53
1:A:541:PRO:HA	1:A:546:TRP:NE1	2.24	0.52
3:C:50:LEU:HG	4:D:206:PRO:O	2.09	0.52
1:A:297:ASN:O	1:A:301:VAL:HG23	2.09	0.52
1:A:549:LEU:O	1:A:552:MET:HB2	2.10	0.52
1:A:738:PHE:CE1	1:A:771:GLY:HA3	2.45	0.52
2:B:294:ASN:OD1	2:B:295:ARG:NH1	2.43	0.52
4:D:151:VAL:O	4:D:155:PRO:HB3	2.09	0.52
4:D:67:TYR:O	4:D:70:GLN:HB3	2.09	0.52
1:A:574:TYR:O	1:A:597:GLY:N	2.42	0.52
2:B:195:ARG:H	2:B:243:ARG:NH1	2.07	0.52
2:B:265:GLY:HA3	2:B:286:VAL:H	1.74	0.52
2:B:289:PHE:HB2	2:B:297:TYR:O	2.09	0.52
1:A:91:ARG:CZ	1:A:127:ARG:HH21	2.21	0.52
1:A:405:VAL:HB	1:A:411:GLN:HB3	1.90	0.52
1:A:457:GLY:H	1:A:472:SER:C	2.12	0.52
2:B:138:ASP:OD1	2:B:139:GLY:N	2.43	0.52
2:B:354:GLY:C	2:B:355:ARG:HH11	2.11	0.52
1:A:358:ASP:HA	4:D:135:ARG:HB3	1.92	0.52
1:A:215:GLN:N	1:A:218:LYS:HE2	2.25	0.52
1:A:284:ILE:HG12	1:A:311:LEU:HD21	1.91	0.52
1:A:361:LYS:HG2	1:A:363:ALA:H	1.75	0.52
1:A:713:VAL:HA	1:A:742:GLY:HA2	1.91	0.52
2:B:180:ALA:HB3	2:B:182:LYS:HZ3	1.75	0.52
2:B:274:SER:OG	2:B:276:GLN:HG2	2.10	0.52
4:D:140:ALA:CB	4:D:174:LEU:HD21	2.40	0.52
1:A:382:VAL:HG12	1:A:386:LYS:HZ3	1.74	0.52
1:A:502:SER:OG	1:A:538:ASN:O	2.27	0.52
5:E:32:ILE:N	5:E:79:GLN:OE1	2.43	0.52
1:A:520:ASN:HB3	1:A:523:ASN:HB2	1.92	0.52

*Continued on next page...*



*Continued from previous page...*

Atom-1	Atom-2	Interatomic distance (Å)	Clash overlap (Å)
1:A:576:TRP:HZ3	1:A:593:VAL:HB	1.73	0.52
1:A:622:ASP:CB	1:A:627:TRP:HB2	2.38	0.52
2:B:280:LYS:H	2:B:281:ARG:NH2	2.08	0.52
1:A:539:MET:SD	1:A:539:MET:N	2.83	0.52
2:B:270:LEU:HA	2:B:278:MET:HG2	1.90	0.52
5:E:73:TRP:N	5:E:93:LEU:O	2.30	0.52
1:A:272:GLU:N	1:A:337:LEU:O	2.42	0.52
1:A:774:LEU:HD22	1:A:776:TRP:CH2	2.44	0.52
2:B:237:GLY:C	2:B:239:THR:H	2.13	0.52
1:A:734:ARG:NH1	1:A:775:GLN:OE1	2.43	0.52
2:B:194:LEU:HD23	2:B:243:ARG:HD3	1.91	0.52
3:C:64:ASP:HB2	4:D:152:ARG:NH1	2.24	0.52
3:C:41:TYR:OH	4:D:166:ARG:NH1	2.42	0.52
1:A:301:VAL:HA	1:A:304:MET:HE2	1.92	0.51
2:B:92:ILE:HG22	2:B:93:TRP:CD1	2.45	0.51
1:A:396:GLU:CA	1:A:420:GLU:HA	2.32	0.51
2:B:271:ASP:OD1	2:B:273:ARG:NH1	2.42	0.51
3:C:35:VAL:HG22	3:C:77:GLY:HA2	1.91	0.51
4:D:56:GLU:OE2	4:D:79:TYR:OH	2.26	0.51
1:A:182:ILE:HG22	1:A:185:ASN:HB2	1.92	0.51
1:A:246:SER:O	1:A:254:ILE:HA	2.10	0.51
1:A:546:TRP:CE3	1:A:556:PRO:HG2	2.46	0.51
2:B:121:HIS:HD2	2:B:135:ASN:HA	1.76	0.51
2:B:338:VAL:HG11	2:B:378:LEU:HD21	1.92	0.51
2:B:76:ASP:CG	2:B:78:ALA:H	2.13	0.51
1:A:146:LYS:HG2	1:A:174:SER:CB	2.41	0.51
1:A:125:LEU:HD22	1:A:163:VAL:HG11	1.91	0.51
1:A:576:TRP:N	1:A:595:LEU:O	2.42	0.51
2:B:300:ASP:O	2:B:303:ASP:N	2.34	0.51
2:B:281:ARG:NH1	2:B:313:GLY:H	2.00	0.51
1:A:91:ARG:HG3	1:A:92:PRO:HD3	1.92	0.51
2:B:156:VAL:HG21	2:B:200:PRO:O	2.11	0.51
3:C:33:ARG:HD2	3:C:81:ASP:HB3	1.91	0.51
4:D:173:ARG:HD3	4:D:174:LEU:HD23	1.92	0.51
1:A:152:LYS:O	1:A:168:VAL:N	2.34	0.51
2:B:114:GLY:H	2:B:155:PRO:HD2	1.76	0.51
2:B:298:LEU:CD2	2:B:306:MET:H	2.21	0.51
1:A:392:LEU:HG	1:A:394:PHE:N	2.21	0.51
1:A:573:ASN:HB3	1:A:598:LYS:NZ	2.26	0.51
1:A:660:VAL:HG21	1:A:668:ILE:HD12	1.91	0.51
2:B:344:GLY:N	2:B:366:GLY:HA2	2.26	0.51

*Continued on next page...*

*Continued from previous page...*

Atom-1	Atom-2	Interatomic distance (Å)	Clash overlap (Å)
3:C:33:ARG:HE	3:C:83:ARG:HB2	1.76	0.51
1:A:227:ARG:HA	1:A:238:PHE:CE2	2.46	0.51
1:A:639:ASP:OD1	1:A:640:GLY:N	2.37	0.51
2:B:93:TRP:HZ3	2:B:95:VAL:HG22	1.75	0.51
4:D:50:GLN:O	4:D:53:THR:OG1	2.22	0.51
1:A:714:ALA:N	1:A:741:MET:O	2.32	0.51
2:B:132:TYR:CD1	2:B:144:GLN:HB3	2.46	0.51
4:D:110:TYR:HE2	4:D:163:ALA:HB2	1.75	0.51
4:D:189:GLY:O	4:D:191:TRP:N	2.44	0.51
1:A:204:PRO:HG2	1:A:206:TRP:CD1	2.46	0.51
1:A:367:ARG:HD2	1:A:477:TYR:CG	2.46	0.51
2:B:288:ASP:HB2	2:B:329:SER:HA	1.93	0.51
1:A:190:THR:OG1	1:A:191:ASP:N	2.44	0.50
2:B:342:SER:OG	2:B:343:GLU:OE1	2.27	0.50
4:D:123:ALA:HB3	4:D:132:ARG:NH1	2.25	0.50
4:D:43:LEU:HD23	4:D:44:GLN:HE22	1.75	0.50
1:A:237:ARG:HG2	1:A:266:TYR:OH	2.11	0.50
1:A:454:TYR:CE1	1:A:475:ASN:HA	2.46	0.50
1:A:777:MET:SD	1:A:782:PRO:HA	2.51	0.50
4:D:101:THR:HA	4:D:105:ILE:HD13	1.93	0.50
1:A:366:ARG:HD3	4:D:185:TYR:OH	2.11	0.50
4:D:73:LEU:O	4:D:76:ILE:HG12	2.11	0.50
1:A:749:TRP:O	1:A:761:SER:OG	2.21	0.50
2:B:173:ALA:O	2:B:174:LEU:HD23	2.10	0.50
2:B:266:ASN:ND2	2:B:282:GLU:OE1	2.44	0.50
1:A:154:VAL:O	1:A:165:LEU:HA	2.11	0.50
1:A:456:VAL:HA	1:A:473:VAL:HA	1.94	0.50
1:A:579:ASN:HA	1:A:591:SER:O	2.11	0.50
2:B:188:ASP:OD2	2:B:215:ARG:HB2	2.12	0.50
2:B:246:ASP:N	2:B:287:ASN:HA	2.26	0.50
4:D:196:ASN:HD21	5:E:63:LEU:HB3	1.75	0.50
1:A:140:PHE:O	1:A:144:VAL:HG13	2.12	0.50
1:A:669:GLY:HA3	1:A:744:VAL:HB	1.92	0.50
1:A:746:ASP:OD2	1:A:749:TRP:N	2.45	0.50
1:A:520:ASN:CB	1:A:523:ASN:HB2	2.42	0.50
3:C:65:TYR:HD1	4:D:167:LEU:HD21	1.76	0.50
4:D:215:LEU:HD22	4:D:238:ILE:HB	1.92	0.50
1:A:587:PRO:HG2	1:A:618:TYR:CE2	2.47	0.49
1:A:660:VAL:HG12	1:A:661:ARG:N	2.27	0.49
5:E:42:ASP:N	5:E:45:LYS:HZ2	2.09	0.49
1:A:244:GLN:HE22	2:B:168:ASN:HB3	1.77	0.49

*Continued on next page...*

*Continued from previous page...*

Atom-1	Atom-2	Interatomic distance (Å)	Clash overlap (Å)
1:A:277:LEU:HD13	1:A:281:SER:N	2.27	0.49
2:B:362:VAL:HG12	2:B:388:TYR:HD2	1.77	0.49
2:B:391:THR:OG1	2:B:392:ARG:N	2.45	0.49
1:A:684:PRO:O	1:A:686:TYR:N	2.45	0.49
2:B:35:LEU:HD11	2:B:359:GLN:CG	2.42	0.49
4:D:173:ARG:O	4:D:173:ARG:NH1	2.44	0.49
2:B:262:ALA:HB3	2:B:266:ASN:H	1.73	0.49
2:B:265:GLY:HA3	2:B:286:VAL:N	2.27	0.49
2:B:47:ALA:HB2	2:B:391:THR:HG22	1.95	0.49
5:E:92:THR:HG22	5:E:105:ASP:HB2	1.93	0.49
1:A:177:ILE:HB	1:A:212:ARG:HB2	1.95	0.49
1:A:542:GLN:HG2	1:A:545:MET:HB2	1.94	0.49
1:A:548:TYR:CZ	1:A:647:PRO:HA	2.48	0.49
1:A:704:ASP:N	1:A:704:ASP:OD1	2.34	0.49
1:A:774:LEU:HD22	1:A:776:TRP:HH2	1.77	0.49
2:B:220:LEU:HB3	2:B:225:GLN:N	2.21	0.49
2:B:341:ASP:HB3	2:B:347:HIS:HE1	1.76	0.49
2:B:317:TRP:CZ2	2:B:354:GLY:HA2	2.47	0.49
1:A:405:VAL:HB	1:A:411:GLN:CB	2.42	0.49
1:A:351:LYS:N	1:A:413:ASP:OD2	2.40	0.49
1:A:466:GLN:HA	1:A:494:PHE:CZ	2.48	0.49
1:A:674:TYR:OH	1:A:704:ASP:OD2	2.20	0.49
1:A:747:THR:OG1	1:A:748:ASN:N	2.45	0.49
1:A:768:MET:HB3	1:A:792:LYS:HB3	1.94	0.49
2:B:246:ASP:H	2:B:287:ASN:HD22	1.59	0.49
4:D:57:ALA:HB1	4:D:61:ARG:NH1	2.28	0.49
1:A:323:GLN:N	1:A:340:ASN:O	2.39	0.49
1:A:573:ASN:HB3	1:A:598:LYS:HZ1	1.78	0.49
1:A:129:THR:O	1:A:133:ILE:HG12	2.13	0.49
1:A:505:THR:O	1:A:536:LEU:HA	2.12	0.49
1:A:560:ASP:HA	1:A:679:ALA:O	2.13	0.49
4:D:177:TYR:O	4:D:181:VAL:HG23	2.12	0.49
5:E:77:PHE:N	5:E:89:GLN:O	2.44	0.49
1:A:352:ILE:HG13	1:A:366:ARG:NH1	2.28	0.49
2:B:63:LEU:HA	2:B:113:GLY:O	2.13	0.49
2:B:231:ARG:NE	2:B:233:SER:O	2.46	0.49
2:B:248:ASP:O	2:B:250:THR:N	2.43	0.49
3:C:34:GLN:HG3	3:C:78:LYS:HD2	1.95	0.49
1:A:130:ILE:HG23	1:A:131:ALA:H	1.78	0.48
1:A:512:ASP:HB2	1:A:530:GLY:HA2	1.95	0.48
2:B:274:SER:OG	2:B:275:GLY:N	2.46	0.48

*Continued on next page...*

*Continued from previous page...*

Atom-1	Atom-2	Interatomic distance (Å)	Clash overlap (Å)
2:B:333:TYR:O	2:B:336:ASN:N	2.40	0.48
1:A:199:LEU:HD11	1:A:218:LYS:HE3	1.94	0.48
1:A:538:ASN:HD22	1:A:562:ASP:HA	1.78	0.48
1:A:614:ASP:OD1	1:A:615:THR:N	2.46	0.48
1:A:677:HIS:HD1	1:A:692:THR:HA	1.78	0.48
2:B:113:GLY:N	2:B:125:GLY:O	2.36	0.48
1:A:183:VAL:O	1:A:260:ILE:HG12	2.12	0.48
1:A:377:LEU:HD12	1:A:378:GLY:N	2.28	0.48
1:A:456:VAL:HG12	1:A:473:VAL:HG23	1.94	0.48
3:C:82:ILE:HB	4:D:107:TYR:CE1	2.49	0.48
4:D:78:ALA:O	4:D:82:ASN:N	2.35	0.48
5:E:89:GLN:HA	5:E:107:LYS:O	2.13	0.48
1:A:767:ARG:HD2	1:A:794:TYR:CD1	2.48	0.48
4:D:102:HIS:CG	4:D:103:PRO:HD2	2.48	0.48
1:A:572:PHE:HB3	1:A:599:VAL:HG23	1.96	0.48
1:A:789:GLN:O	1:A:791:PHE:N	2.45	0.48
2:B:198:SER:HA	2:B:249:THR:HG1	1.77	0.48
2:B:63:LEU:HD12	2:B:113:GLY:O	2.12	0.48
2:B:69:ASP:O	2:B:71:VAL:HG23	2.14	0.48
4:D:191:TRP:CZ2	4:D:224:GLN:HG3	2.48	0.48
5:E:40:ALA:O	5:E:43:VAL:HB	2.13	0.48
1:A:216:LYS:O	1:A:219:LEU:HB3	2.13	0.48
1:A:479:THR:HG23	1:A:481:ASP:N	2.27	0.48
1:A:624:ASP:HB3	1:A:626:LYS:NZ	2.29	0.48
2:B:220:LEU:HB2	2:B:227:ILE:HD11	1.95	0.48
2:B:267:LEU:HB2	2:B:281:ARG:HB2	1.96	0.48
2:B:296:ILE:N	2:B:308:LEU:O	2.38	0.48
1:A:539:MET:CE	1:A:539:MET:H	2.25	0.48
1:A:778:SER:O	1:A:780:LEU:N	2.38	0.48
5:E:62:PRO:HG3	5:E:73:TRP:CE3	2.49	0.48
1:A:751:SER:O	1:A:755:SER:N	2.47	0.48
2:B:62:ASN:ND2	2:B:154:ARG:HB2	2.29	0.48
3:C:56:MET:CA	5:E:68:PHE:HB2	2.41	0.48
5:E:89:GLN:NE2	5:E:107:LYS:O	2.47	0.48
1:A:148:SER:HA	1:A:251:LYS:NZ	2.29	0.48
1:A:634:ARG:O	1:A:712:ALA:HA	2.14	0.48
2:B:241:ILE:HB	2:B:264:ASN:HB3	1.95	0.48
2:B:361:LYS:NZ	2:B:364:SER:HA	2.28	0.48
4:D:182:ALA:O	4:D:186:THR:OG1	2.27	0.48
5:E:34:GLN:NE2	5:E:35:GLY:H	2.11	0.48
1:A:274:SER:N	1:A:339:VAL:O	2.46	0.48

*Continued on next page...*

*Continued from previous page...*

Atom-1	Atom-2	Interatomic distance (Å)	Clash overlap (Å)
1:A:291:GLU:HB3	1:A:294:GLU:HB2	1.96	0.48
1:A:537:SER:N	1:A:539:MET:SD	2.87	0.48
1:A:645:GLU:HG3	1:A:748:ASN:HD22	1.77	0.48
4:D:94:ARG:HA	4:D:97:ARG:HG2	1.96	0.48
5:E:62:PRO:HG3	5:E:73:TRP:CD2	2.49	0.48
1:A:93:THR:C	1:A:125:LEU:HB2	2.34	0.47
1:A:282:ALA:HA	1:A:285:GLU:OE1	2.14	0.47
1:A:571:THR:HA	1:A:600:THR:HA	1.96	0.47
2:B:50:THR:HG23	2:B:50:THR:O	2.13	0.47
1:A:454:TYR:HE1	1:A:475:ASN:CG	2.17	0.47
1:A:467:THR:O	1:A:492:ASN:HA	2.15	0.47
2:B:194:LEU:HB2	2:B:263:TYR:HE2	1.79	0.47
2:B:292:ASP:O	2:B:294:ASN:N	2.47	0.47
2:B:94:SER:OG	2:B:95:VAL:N	2.47	0.47
3:C:63:GLY:HA3	3:C:65:TYR:CE2	2.49	0.47
2:B:66:ALA:HB3	2:B:115:VAL:HG12	1.96	0.47
5:E:62:PRO:HB3	5:E:75:TYR:CZ	2.49	0.47
1:A:372:MET:SD	5:E:33:ASN:HB2	2.54	0.47
1:A:386:LYS:HZ2	1:A:400:THR:HG21	1.80	0.47
1:A:525:LEU:HG	1:A:526:ARG:H	1.78	0.47
1:A:548:TYR:O	1:A:552:MET:N	2.35	0.47
2:B:302:ASN:HD22	2:B:304:ARG:HE	1.62	0.47
2:B:80:LEU:HB3	2:B:82:LYS:NZ	2.29	0.47
3:C:33:ARG:HB3	3:C:81:ASP:OD1	2.15	0.47
3:C:73:SER:OG	3:C:74:GLY:N	2.48	0.47
4:D:102:HIS:CD2	4:D:103:PRO:HD2	2.50	0.47
4:D:40:GLN:O	4:D:44:GLN:HG2	2.13	0.47
1:A:589:ASP:N	1:A:589:ASP:OD1	2.47	0.47
1:A:649:TYR:CD1	1:A:650:GLU:HG3	2.50	0.47
2:B:307:ALA:HB3	2:B:316:LEU:HB2	1.97	0.47
5:E:39:THR:OG1	5:E:41:ASN:HB3	2.14	0.47
1:A:505:THR:O	1:A:505:THR:OG1	2.24	0.47
1:A:506:ASN:HA	1:A:535:SER:O	2.15	0.47
2:B:121:HIS:HB3	2:B:123:TYR:CE1	2.50	0.47
2:B:291:VAL:HA	2:B:296:ILE:HA	1.96	0.47
1:A:199:LEU:HA	1:A:199:LEU:HD23	1.76	0.47
1:A:280:HIS:O	1:A:284:ILE:HG13	2.14	0.47
1:A:392:LEU:HD21	1:A:394:PHE:HB3	1.96	0.47
1:A:713:VAL:HG23	1:A:742:GLY:HA3	1.97	0.47
2:B:291:VAL:HG23	2:B:296:ILE:HG13	1.95	0.47
1:A:102:ASN:HB2	1:A:105:VAL:HG22	1.96	0.47

*Continued on next page...*

*Continued from previous page...*

Atom-1	Atom-2	Interatomic distance (Å)	Clash overlap (Å)
1:A:192:GLU:O	1:A:195:SER:OG	2.17	0.47
1:A:200:ARG:HG3	1:A:209:VAL:HG21	1.96	0.47
1:A:233:ARG:HB3	1:A:265:GLN:HE21	1.80	0.47
1:A:311:LEU:HD12	1:A:314:ARG:NH1	2.25	0.47
1:A:677:HIS:CE1	1:A:680:SER:HB3	2.48	0.47
2:B:262:ALA:O	2:B:265:GLY:N	2.32	0.47
2:B:320:SER:O	2:B:323:LEU:HB2	2.14	0.47
1:A:220:ALA:HA	1:A:223:LEU:HG	1.97	0.47
1:A:306:ASP:HA	1:A:309:LYS:HB2	1.96	0.47
1:A:382:VAL:HG12	1:A:386:LYS:NZ	2.30	0.47
1:A:448:ASN:ND2	1:A:453:GLY:H	2.11	0.47
1:A:673:VAL:HG13	1:A:700:CYS:O	2.14	0.47
2:B:156:VAL:HB	2:B:163:LEU:HB2	1.96	0.47
2:B:298:LEU:HD21	2:B:306:MET:N	2.24	0.47
2:B:341:ASP:CG	2:B:343:GLU:H	2.18	0.47
1:A:390:ASN:HA	1:A:395:PHE:CZ	2.49	0.46
1:A:457:GLY:O	1:A:472:SER:N	2.39	0.46
2:B:345:TYR:C	2:B:346:LEU:HD22	2.35	0.46
3:C:80:LEU:HD21	4:D:162:ASP:CB	2.40	0.46
3:C:84:PRO:HD3	4:D:77:TYR:HE2	1.78	0.46
4:D:192:VAL:HG13	4:D:193:ALA:N	2.30	0.46
1:A:237:ARG:NE	1:A:328:ILE:HG21	2.30	0.46
1:A:266:TYR:HB3	1:A:334:THR:HA	1.96	0.46
5:E:74:PHE:HA	5:E:92:THR:HA	1.97	0.46
1:A:430:ILE:N	1:A:430:ILE:CD1	2.76	0.46
1:A:448:ASN:H	1:A:455:ALA:HA	1.80	0.46
1:A:492:ASN:HB2	1:A:508:SER:HB2	1.98	0.46
2:B:85:ASN:OD1	2:B:87:ASP:N	2.47	0.46
4:D:184:TYR:HH	4:D:188:ARG:NH2	2.10	0.46
5:E:39:THR:HG23	5:E:42:ASP:OD2	2.16	0.46
5:E:89:GLN:HE22	5:E:107:LYS:H	1.63	0.46
1:A:111:LYS:NZ	1:A:115:GLU:HG3	2.29	0.46
1:A:312:LEU:O	1:A:315:TYR:N	2.48	0.46
1:A:323:GLN:HB2	1:A:340:ASN:HB3	1.97	0.46
1:A:473:VAL:O	1:A:486:GLY:HA2	2.15	0.46
1:A:502:SER:HA	1:A:538:ASN:HB2	1.97	0.46
1:A:530:GLY:N	1:A:573:ASN:HD21	2.14	0.46
3:C:39:GLU:O	3:C:42:LEU:N	2.42	0.46
4:D:233:LYS:O	4:D:237:ILE:HG12	2.15	0.46
1:A:457:GLY:O	1:A:471:LEU:HG	2.16	0.46
1:A:519:ILE:CG1	1:A:525:LEU:H	2.25	0.46

*Continued on next page...*

*Continued from previous page...*

Atom-1	Atom-2	Interatomic distance (Å)	Clash overlap (Å)
1:A:574:TYR:CD2	1:A:597:GLY:HA3	2.50	0.46
2:B:131:VAL:O	2:B:144:GLN:HA	2.15	0.46
2:B:243:ARG:HD2	2:B:243:ARG:HA	1.77	0.46
1:A:465:TYR:O	1:A:467:THR:HG23	2.15	0.46
1:A:462:LYS:HG3	1:A:467:THR:HG22	1.98	0.46
1:A:652:PHE:CD1	1:A:652:PHE:N	2.83	0.46
1:A:738:PHE:HE1	1:A:788:ALA:HB2	1.81	0.46
1:A:767:ARG:CZ	1:A:794:TYR:HB2	2.46	0.46
2:B:189:MET:HE3	2:B:190:PRO:HD2	1.98	0.46
2:B:286:VAL:CG1	2:B:298:LEU:HB2	2.45	0.46
2:B:377:LYS:HZ1	2:B:389:SER:C	2.19	0.46
3:C:49:GLU:O	3:C:51:HIS:NE2	2.49	0.46
4:D:49:ARG:HB2	4:D:50:GLN:OE1	2.15	0.46
1:A:237:ARG:NH1	1:A:328:ILE:HG13	2.30	0.46
1:A:575:GLY:HA3	1:A:596:THR:HA	1.98	0.46
2:B:32:MET:SD	2:B:32:MET:N	2.88	0.46
2:B:45:THR:OG1	2:B:391:THR:HG23	2.15	0.46
5:E:72:THR:HA	5:E:95:PHE:HD2	1.80	0.46
1:A:669:GLY:CA	1:A:744:VAL:HB	2.46	0.46
2:B:82:LYS:HB3	2:B:84:LEU:HD11	1.97	0.46
5:E:41:ASN:O	5:E:45:LYS:HG3	2.16	0.46
1:A:99:PHE:CD2	1:A:107:ASP:HB2	2.51	0.46
1:A:156:THR:HB	1:A:164:ASP:HB2	1.98	0.46
1:A:174:SER:HG	1:A:175:ALA:N	2.14	0.46
1:A:233:ARG:HB3	1:A:265:GLN:NE2	2.31	0.46
1:A:519:ILE:N	1:A:523:ASN:O	2.49	0.46
1:A:576:TRP:HB3	1:A:595:LEU:HB3	1.97	0.46
2:B:194:LEU:HB2	2:B:263:TYR:CE2	2.51	0.46
2:B:35:LEU:HD12	2:B:345:TYR:CD1	2.51	0.46
4:D:114:LEU:HA	4:D:166:ARG:HH21	1.81	0.46
1:A:358:ASP:OD1	1:A:359:THR:N	2.49	0.45
1:A:492:ASN:HB2	1:A:508:SER:N	2.32	0.45
1:A:502:SER:H	1:A:505:THR:CG2	2.29	0.45
1:A:761:SER:O	1:A:763:PRO:HD3	2.16	0.45
2:B:148:ALA:HB3	2:B:166:THR:HG21	1.97	0.45
2:B:175:ASN:O	2:B:179:GLY:N	2.45	0.45
2:B:366:GLY:O	2:B:383:LYS:HG2	2.15	0.45
4:D:173:ARG:NH1	4:D:177:TYR:HB2	2.31	0.45
1:A:284:ILE:HG23	1:A:308:ILE:HG12	1.98	0.45
1:A:686:TYR:CG	1:A:694:ASP:HB3	2.51	0.45
2:B:296:ILE:HG22	2:B:297:TYR:N	2.31	0.45

*Continued on next page...*

*Continued from previous page...*

Atom-1	Atom-2	Interatomic distance (Å)	Clash overlap (Å)
4:D:119:LEU:O	4:D:122:SER:OG	2.32	0.45
1:A:401:ASP:HB3	1:A:415:VAL:CG1	2.46	0.45
1:A:522:TYR:HB2	1:A:578:TYR:CE1	2.51	0.45
1:A:632:ARG:HB3	1:A:715:SER:HB2	1.97	0.45
4:D:197:ARG:HA	4:D:197:ARG:HD2	1.83	0.45
1:A:294:GLU:HG2	1:A:295:LEU:H	1.81	0.45
2:B:240:GLU:OE1	2:B:240:GLU:N	2.50	0.45
2:B:300:ASP:OD1	2:B:301:GLN:N	2.49	0.45
2:B:322:LEU:HD12	2:B:325:ARG:HD2	1.98	0.45
2:B:220:LEU:N	2:B:225:GLN:O	2.38	0.45
2:B:372:VAL:O	2:B:378:LEU:HD12	2.17	0.45
4:D:215:LEU:HD13	4:D:238:ILE:HB	1.97	0.45
5:E:65:SER:HA	5:E:74:PHE:CE1	2.51	0.45
1:A:510:GLY:HA3	1:A:532:VAL:HA	1.98	0.45
4:D:47:ASN:HD21	4:D:50:GLN:NE2	2.14	0.45
1:A:550:TYR:C	1:A:553:GLY:H	2.20	0.45
4:D:131:ASP:CG	4:D:133:SER:H	2.16	0.45
1:A:232:ASP:OD1	1:A:233:ARG:N	2.50	0.45
1:A:433:GLY:CA	1:A:664:GLN:HE22	2.30	0.45
1:A:549:LEU:HG	1:A:556:PRO:HG3	1.99	0.45
2:B:124:ILE:HG22	2:B:132:TYR:HB2	1.99	0.45
2:B:195:ARG:N	2:B:243:ARG:HH22	2.15	0.45
4:D:191:TRP:HB2	4:D:225:MET:HE3	1.97	0.45
1:A:327:GLU:O	1:A:335:VAL:HG23	2.17	0.45
4:D:172:ASP:O	4:D:176:LYS:HG2	2.16	0.45
5:E:91:LEU:HG	5:E:105:ASP:C	2.37	0.45
1:A:180:ILE:HD12	1:A:194:ILE:HD13	1.99	0.45
1:A:235:TYR:HB3	1:A:263:GLY:HA3	1.98	0.45
1:A:588:THR:OG1	1:A:589:ASP:OD1	2.34	0.45
2:B:165:HIS:NE2	2:B:196:GLY:O	2.50	0.45
2:B:220:LEU:CD2	2:B:225:GLN:HG2	2.47	0.45
1:A:162:ARG:NH2	4:D:62:TYR:OH	2.50	0.45
1:A:99:PHE:HE2	1:A:111:LYS:HB2	1.81	0.44
1:A:94:ILE:HG12	1:A:125:LEU:HA	1.99	0.44
1:A:321:ARG:O	1:A:342:ASP:HB3	2.17	0.44
1:A:660:VAL:HG22	1:A:713:VAL:HG21	1.99	0.44
2:B:271:ASP:HB3	2:B:274:SER:OG	2.17	0.44
4:D:207:ASP:OD1	4:D:208:THR:HG23	2.17	0.44
4:D:38:THR:HA	4:D:41:GLN:CD	2.37	0.44
1:A:266:TYR:HE1	1:A:333:LYS:HD3	1.82	0.44
1:A:540:GLN:OE1	1:A:690:CYS:HB2	2.17	0.44

*Continued on next page...*



*Continued from previous page...*

Atom-1	Atom-2	Interatomic distance (Å)	Clash overlap (Å)
1:A:709:ASN:OD1	1:A:746:ASP:HA	2.17	0.44
1:A:631:GLY:HA2	1:A:716:LEU:HD23	1.99	0.44
1:A:774:LEU:O	1:A:784:VAL:HG23	2.16	0.44
1:A:785:PHE:HB2	1:A:803:GLN:O	2.18	0.44
1:A:664:GLN:HG3	1:A:800:GLU:N	2.31	0.44
2:B:271:ASP:HB3	2:B:274:SER:CB	2.47	0.44
4:D:166:ARG:O	4:D:170:LEU:HD23	2.18	0.44
1:A:287:LEU:HD22	1:A:311:LEU:HD22	2.00	0.44
1:A:267:LYS:O	1:A:334:THR:HB	2.18	0.44
1:A:621:ILE:CG2	1:A:627:TRP:HB3	2.47	0.44
1:A:637:TYR:CZ	1:A:639:ASP:HB2	2.53	0.44
1:A:718:PHE:N	1:A:736:SER:OG	2.49	0.44
1:A:445:GLN:HE22	1:A:447:ASP:N	2.15	0.44
1:A:484:SER:O	1:A:516:GLY:N	2.47	0.44
1:A:491:TYR:CD2	1:A:509:TYR:HB3	2.52	0.44
1:A:736:SER:OG	1:A:737:PHE:N	2.49	0.44
2:B:266:ASN:CB	2:B:282:GLU:HA	2.46	0.44
2:B:307:ALA:CB	2:B:316:LEU:HB2	2.47	0.44
2:B:325:ARG:O	2:B:327:LEU:HG	2.17	0.44
2:B:35:LEU:HD11	2:B:359:GLN:CD	2.38	0.44
2:B:378:LEU:O	2:B:379:LEU:HD23	2.18	0.44
2:B:95:VAL:HG11	2:B:139:GLY:HA3	1.99	0.44
4:D:150:LEU:CD1	4:D:154:TYR:HB2	2.47	0.44
1:A:266:TYR:CE1	1:A:333:LYS:HD3	2.53	0.44
1:A:270:GLY:N	1:A:336:LYS:HD2	2.32	0.44
1:A:714:ALA:O	1:A:740:ASP:HB3	2.18	0.44
1:A:432:TYR:HA	1:A:438:VAL:CG1	2.48	0.44
1:A:432:TYR:HA	1:A:438:VAL:HG11	2.00	0.44
1:A:509:TYR:O	1:A:532:VAL:HG23	2.17	0.44
1:A:533:HIS:CD2	1:A:534:ASN:N	2.86	0.44
1:A:534:ASN:HB2	1:A:567:THR:HG22	1.98	0.44
1:A:565:PHE:CE2	1:A:567:THR:HB	2.53	0.44
2:B:143:TRP:CD1	2:B:178:ASP:HA	2.53	0.44
2:B:146:LYS:HE2	2:B:146:LYS:HB2	1.70	0.44
2:B:336:ASN:ND2	2:B:348:TRP:HB3	2.29	0.44
2:B:344:GLY:HA3	2:B:363:ASP:O	2.17	0.44
2:B:378:LEU:HD12	2:B:379:LEU:H	1.82	0.44
4:D:75:LEU:HD22	4:D:79:TYR:CE2	2.52	0.44
1:A:177:ILE:N	1:A:212:ARG:O	2.45	0.44
1:A:327:GLU:HG3	1:A:336:LYS:HB3	1.99	0.44
1:A:657:SER:OG	1:A:658:SER:N	2.49	0.44

*Continued on next page...*

*Continued from previous page...*

Atom-1	Atom-2	Interatomic distance (Å)	Clash overlap (Å)
1:A:671:LYS:HA	1:A:705:ALA:HA	1.99	0.44
2:B:291:VAL:CG2	2:B:296:ILE:HG13	2.47	0.44
2:B:342:SER:O	2:B:366:GLY:HA3	2.17	0.44
1:A:508:SER:HB3	1:A:534:ASN:OD1	2.18	0.44
1:A:542:GLN:H	1:A:546:TRP:HE1	1.64	0.44
1:A:546:TRP:CZ3	1:A:558:THR:HA	2.53	0.44
1:A:749:TRP:CE2	1:A:760:TYR:HB2	2.52	0.44
2:B:147:VAL:HB	2:B:172:GLN:NE2	2.33	0.44
2:B:88:ASP:OD2	2:B:90:LYS:HB2	2.17	0.44
1:A:245:VAL:HA	1:A:255:TYR:O	2.18	0.44
1:A:317:TYR:CD2	1:A:343:ALA:HB1	2.53	0.44
1:A:346:ARG:HH21	5:E:37:TYR:HE1	1.65	0.44
1:A:396:GLU:HB3	1:A:419:LYS:C	2.38	0.44
1:A:364:VAL:HG23	1:A:477:TYR:HD2	1.83	0.44
1:A:534:ASN:HB2	1:A:567:THR:CG2	2.48	0.44
1:A:547:ARG:NH1	1:A:754:TYR:OH	2.50	0.44
1:A:784:VAL:HG13	1:A:805:ASN:O	2.18	0.44
2:B:238:SER:N	2:B:240:GLU:OE2	2.51	0.44
2:B:261:LEU:HD11	2:B:286:VAL:HB	1.98	0.44
2:B:390:ILE:HG22	2:B:391:THR:H	1.83	0.44
3:C:53:PRO:HG2	3:C:56:MET:SD	2.58	0.44
3:C:33:ARG:CZ	4:D:77:TYR:HH	2.31	0.44
5:E:47:ARG:HA	5:E:47:ARG:HD3	1.57	0.44
1:A:114:LEU:HD23	1:A:114:LEU:HA	1.79	0.43
1:A:316:GLY:HA2	1:A:377:LEU:O	2.18	0.43
1:A:541:PRO:HB3	1:A:546:TRP:CZ2	2.53	0.43
1:A:677:HIS:ND1	1:A:692:THR:HA	2.33	0.43
2:B:194:LEU:HA	2:B:243:ARG:CZ	2.48	0.43
4:D:172:ASP:CG	4:D:208:THR:HB	2.38	0.43
5:E:75:TYR:O	5:E:90:THR:HG23	2.18	0.43
1:A:286:GLN:HA	1:A:289:LYS:HG2	2.00	0.43
2:B:353:ASP:OD1	2:B:353:ASP:N	2.51	0.43
2:B:377:LYS:HZ1	2:B:390:ILE:N	2.15	0.43
1:A:647:PRO:HB2	1:A:649:TYR:CZ	2.54	0.43
1:A:91:ARG:CG	1:A:92:PRO:HD3	2.48	0.43
2:B:183:TRP:HD1	2:B:185:VAL:N	2.14	0.43
2:B:52:VAL:HG22	2:B:386:THR:HB	2.00	0.43
1:A:247:LEU:HB2	2:B:243:ARG:HH21	1.84	0.43
1:A:283:GLU:H	1:A:283:GLU:CD	2.22	0.43
1:A:657:SER:O	1:A:659:THR:N	2.51	0.43
1:A:717:GLU:OE1	1:A:738:PHE:HA	2.18	0.43

*Continued on next page...*

*Continued from previous page...*

Atom-1	Atom-2	Interatomic distance (Å)	Clash overlap (Å)
2:B:195:ARG:HG2	2:B:243:ARG:HH22	1.82	0.43
2:B:264:ASN:OD1	2:B:266:ASN:ND2	2.52	0.43
2:B:271:ASP:HB3	2:B:274:SER:HB3	2.01	0.43
2:B:303:ASP:HB2	2:B:324:HIS:H	1.83	0.43
2:B:305:VAL:HG22	2:B:306:MET:N	2.34	0.43
2:B:76:ASP:OD1	2:B:80:LEU:N	2.51	0.43
5:E:32:ILE:HG13	5:E:80:GLN:O	2.19	0.43
1:A:247:LEU:HA	1:A:253:GLY:O	2.18	0.43
1:A:408:SER:HB3	1:A:411:GLN:HG3	1.99	0.43
1:A:364:VAL:HG23	1:A:477:TYR:CD2	2.53	0.43
1:A:738:PHE:CE1	1:A:788:ALA:HB2	2.53	0.43
3:C:47:LEU:CD1	4:D:168:VAL:HG23	2.47	0.43
1:A:337:LEU:HD12	1:A:337:LEU:HA	1.69	0.43
1:A:350:ARG:HB3	1:A:413:ASP:OD2	2.19	0.43
1:A:416:TYR:O	1:A:418:VAL:HG23	2.19	0.43
1:A:536:LEU:HD12	1:A:539:MET:SD	2.58	0.43
2:B:199:ALA:HB3	2:B:250:THR:HG23	2.00	0.43
2:B:91:GLU:OE2	2:B:94:SER:N	2.52	0.43
2:B:92:ILE:HG22	2:B:93:TRP:HD1	1.81	0.43
5:E:46:ILE:HD12	5:E:55:VAL:HG13	2.00	0.43
1:A:137:LEU:O	1:A:140:PHE:HB3	2.19	0.43
1:A:438:VAL:HG12	1:A:438:VAL:O	2.18	0.43
1:A:533:HIS:NE2	1:A:566:LYS:HG3	2.34	0.43
1:A:671:LYS:HD2	1:A:671:LYS:N	2.34	0.43
1:A:778:SER:OG	1:A:779:PRO:HD2	2.17	0.43
2:B:318:THR:O	2:B:355:ARG:NH2	2.49	0.43
4:D:181:VAL:O	4:D:184:TYR:HB3	2.18	0.43
2:B:377:LYS:HD2	2:B:377:LYS:HA	1.68	0.43
1:A:376:TRP:CH2	5:E:35:GLY:HA3	2.54	0.43
1:A:306:ASP:O	1:A:309:LYS:HB2	2.19	0.43
2:B:195:ARG:H	2:B:243:ARG:NH2	2.15	0.43
2:B:73:TYR:HB2	2:B:115:VAL:HG11	2.01	0.43
1:A:276:ASN:ND2	1:A:343:ALA:H	2.17	0.43
1:A:389:LEU:CD2	1:A:398:VAL:HG23	2.45	0.43
1:A:415:VAL:HG22	1:A:416:TYR:N	2.34	0.43
1:A:676:PRO:CD	1:A:699:LEU:HG	2.47	0.43
1:A:366:ARG:NH1	4:D:185:TYR:OH	2.51	0.43
1:A:107:ASP:HA	1:A:110:LEU:HD13	2.01	0.42
1:A:94:ILE:HB	1:A:123:GLU:HB2	2.01	0.42
1:A:232:ASP:O	1:A:297:ASN:HA	2.19	0.42
1:A:458:ILE:O	1:A:459:ASN:ND2	2.52	0.42

*Continued on next page...*

*Continued from previous page...*

Atom-1	Atom-2	Interatomic distance (Å)	Clash overlap (Å)
1:A:533:HIS:HD2	1:A:534:ASN:N	2.17	0.42
1:A:571:THR:HG22	1:A:600:THR:HG22	2.01	0.42
1:A:751:SER:HA	1:A:754:TYR:CD2	2.53	0.42
2:B:270:LEU:HD13	2:B:275:GLY:HA2	2.00	0.42
2:B:85:ASN:CG	2:B:87:ASP:H	2.21	0.42
1:A:100:SER:OG	1:A:166:LYS:HD2	2.19	0.42
1:A:154:VAL:N	1:A:166:LYS:O	2.51	0.42
1:A:546:TRP:N	1:A:546:TRP:CD1	2.87	0.42
2:B:43:THR:O	2:B:392:ARG:HG2	2.20	0.42
1:A:336:LYS:HG3	1:A:337:LEU:N	2.35	0.42
1:A:533:HIS:HA	1:A:568:ASP:OD1	2.19	0.42
2:B:303:ASP:HB2	2:B:324:HIS:N	2.34	0.42
2:B:56:ILE:HD13	2:B:56:ILE:HA	1.78	0.42
4:D:147:PHE:HE2	4:D:166:ARG:HB3	1.84	0.42
1:A:241:ASP:N	1:A:259:ASN:O	2.50	0.42
1:A:244:GLN:HB2	2:B:193:SER:OG	2.19	0.42
1:A:270:GLY:HA3	1:A:336:LYS:NZ	2.35	0.42
1:A:396:GLU:HB2	1:A:421:ARG:N	2.34	0.42
1:A:479:THR:HG22	1:A:483:VAL:HB	2.00	0.42
2:B:77:ARG:HH11	2:B:110:LEU:HD22	1.84	0.42
4:D:192:VAL:HG11	5:E:34:GLN:NE2	2.34	0.42
4:D:205:TYR:HB2	4:D:207:ASP:OD1	2.19	0.42
4:D:58:LEU:O	4:D:62:TYR:N	2.35	0.42
4:D:55:LEU:HD22	4:D:71:VAL:HG13	2.01	0.42
4:D:72:GLN:O	4:D:76:ILE:HG23	2.18	0.42
1:A:114:LEU:HD21	1:A:133:ILE:HG21	2.01	0.42
1:A:646:MET:SD	1:A:648:PHE:HA	2.59	0.42
1:A:701:LYS:HE3	1:A:758:PRO:HD2	2.02	0.42
2:B:129:ALA:O	2:B:147:VAL:HG22	2.20	0.42
2:B:50:THR:HB	2:B:89:GLY:HA3	2.02	0.42
1:A:111:LYS:HZ2	1:A:115:GLU:HG3	1.85	0.42
1:A:318:ALA:HB2	1:A:348:TYR:CE2	2.55	0.42
1:A:433:GLY:HA3	1:A:664:GLN:HE21	1.75	0.42
1:A:766:ILE:H	1:A:766:ILE:HD12	1.85	0.42
2:B:192:LEU:O	2:B:194:LEU:HD12	2.19	0.42
2:B:294:ASN:OD1	2:B:294:ASN:N	2.51	0.42
2:B:294:ASN:HD21	2:B:295:ARG:HH11	1.66	0.42
4:D:110:TYR:CE2	4:D:163:ALA:HB2	2.54	0.42
1:A:177:ILE:HA	1:A:254:ILE:HB	2.00	0.42
1:A:194:ILE:HG22	1:A:200:ARG:HD3	2.01	0.42
2:B:258:VAL:HG12	2:B:259:PHE:N	2.35	0.42

*Continued on next page...*

*Continued from previous page...*

Atom-1	Atom-2	Interatomic distance (Å)	Clash overlap (Å)
2:B:319:GLN:OE1	2:B:355:ARG:HA	2.20	0.42
5:E:51:THR:O	5:E:55:VAL:HG23	2.20	0.42
1:A:179:GLN:NE2	1:A:255:TYR:CG	2.86	0.42
1:A:570:PHE:H	1:A:604:SER:HB2	1.85	0.42
1:A:624:ASP:HB3	1:A:626:LYS:HZ3	1.85	0.42
2:B:81:VAL:O	2:B:82:LYS:HD3	2.20	0.42
4:D:138:GLN:HG2	4:D:139:HIS:N	2.34	0.42
1:A:574:TYR:CZ	1:A:597:GLY:HA3	2.54	0.42
1:A:626:LYS:O	1:A:721:PRO:HD3	2.19	0.42
1:A:684:PRO:HG2	1:A:688:TYR:HB2	2.01	0.42
1:A:741:MET:HB3	1:A:766:ILE:CG2	2.50	0.42
2:B:118:SER:HB2	2:B:123:TYR:OH	2.20	0.42
2:B:244:LEU:HB3	2:B:301:GLN:HG2	2.01	0.42
2:B:46:THR:HA	2:B:390:ILE:HG23	2.02	0.42
3:C:50:LEU:HD23	3:C:50:LEU:HA	1.61	0.42
4:D:140:ALA:HB1	4:D:174:LEU:HD21	2.00	0.42
1:A:318:ALA:HB2	1:A:348:TYR:HE2	1.84	0.42
1:A:352:ILE:HG13	1:A:366:ARG:CZ	2.49	0.42
1:A:549:LEU:HD12	1:A:554:GLU:HB2	2.02	0.42
1:A:559:SER:C	1:A:677:HIS:HD2	2.22	0.42
2:B:148:ALA:H	2:B:172:GLN:NE2	2.17	0.42
2:B:222:GLU:OE1	2:B:223:GLN:HG2	2.19	0.42
4:D:29:ASP:O	4:D:30:ASN:ND2	2.53	0.42
2:B:183:TRP:CE3	2:B:223:GLN:HA	2.55	0.41
2:B:245:SER:HB2	2:B:286:VAL:O	2.19	0.41
3:C:57:ILE:C	3:C:58:LEU:HD12	2.40	0.41
5:E:80:GLN:OE1	5:E:86:VAL:HG22	2.20	0.41
1:A:152:LYS:N	1:A:168:VAL:O	2.39	0.41
1:A:267:LYS:NZ	1:A:295:LEU:HB3	2.35	0.41
1:A:432:TYR:CA	1:A:438:VAL:HG22	2.50	0.41
1:A:686:TYR:CD2	1:A:694:ASP:HB3	2.55	0.41
2:B:110:LEU:O	2:B:127:GLU:N	2.48	0.41
1:A:199:LEU:O	1:A:200:ARG:HG2	2.20	0.41
1:A:199:LEU:HD21	1:A:218:LYS:NZ	2.35	0.41
1:A:549:LEU:HD13	1:A:549:LEU:HA	1.89	0.41
1:A:772:ILE:O	1:A:774:LEU:N	2.53	0.41
2:B:194:LEU:HD13	2:B:235:ALA:HB1	2.02	0.41
2:B:32:MET:CE	2:B:325:ARG:HA	2.49	0.41
2:B:59:PHE:HB3	2:B:77:ARG:CZ	2.50	0.41
3:C:76:VAL:HG23	3:C:76:VAL:O	2.20	0.41
4:D:154:TYR:O	4:D:156:ASN:N	2.50	0.41

*Continued on next page...*

*Continued from previous page...*

Atom-1	Atom-2	Interatomic distance (Å)	Clash overlap (Å)
4:D:219:GLU:HG2	4:D:223:ARG:NH1	2.35	0.41
4:D:219:GLU:OE2	4:D:235:ALA:HB2	2.20	0.41
5:E:79:GLN:O	5:E:87:THR:N	2.42	0.41
1:A:197:PHE:O	1:A:200:ARG:NH1	2.54	0.41
1:A:448:ASN:OD1	1:A:454:TYR:N	2.33	0.41
1:A:587:PRO:HG2	1:A:618:TYR:CD2	2.55	0.41
1:A:619:VAL:HG13	1:A:629:VAL:HB	2.02	0.41
1:A:678:GLN:HA	1:A:692:THR:C	2.40	0.41
1:A:733:VAL:HG21	1:A:777:MET:HG2	2.02	0.41
1:A:805:ASN:HD22	1:A:806:ILE:H	1.69	0.41
2:B:163:LEU:HB3	2:B:200:PRO:CG	2.50	0.41
2:B:63:LEU:HD12	2:B:63:LEU:HA	1.94	0.41
4:D:114:LEU:HA	4:D:166:ARG:NH2	2.35	0.41
4:D:229:ALA:HA	4:D:232:GLU:OE2	2.21	0.41
5:E:72:THR:O	5:E:73:TRP:HD1	2.04	0.41
1:A:312:LEU:HA	1:A:312:LEU:HD23	1.77	0.41
1:A:296:TYR:HD2	1:A:335:VAL:HG11	1.85	0.41
1:A:659:THR:H	1:A:659:THR:HG23	1.60	0.41
4:D:229:ALA:HB1	4:D:233:LYS:NZ	2.35	0.41
1:A:390:ASN:ND2	1:A:398:VAL:HB	2.36	0.41
1:A:536:LEU:HB3	1:A:539:MET:CE	2.51	0.41
1:A:737:PHE:HD1	1:A:772:ILE:HG13	1.85	0.41
1:A:99:PHE:HD2	1:A:107:ASP:HB2	1.86	0.41
2:B:218:ALA:N	2:B:228:TRP:O	2.53	0.41
2:B:248:ASP:H	2:B:261:LEU:HD23	1.85	0.41
2:B:247:VAL:HA	2:B:286:VAL:O	2.20	0.41
2:B:295:ARG:HA	2:B:308:LEU:O	2.21	0.41
2:B:59:PHE:HB3	2:B:77:ARG:NH2	2.34	0.41
5:E:66:ASP:CG	5:E:69:GLY:H	2.17	0.41
1:A:129:THR:HB	1:A:133:ILE:HG12	2.02	0.41
1:A:775:GLN:HB2	1:A:784:VAL:HG23	2.03	0.41
4:D:55:LEU:HB3	4:D:75:LEU:HG	2.02	0.41
5:E:91:LEU:HA	5:E:105:ASP:O	2.20	0.41
1:A:133:ILE:HG22	1:A:137:LEU:HD23	2.03	0.41
2:B:104:PHE:CD1	2:B:108:PRO:HD3	2.56	0.41
2:B:219:VAL:HG13	2:B:224:GLY:HA2	2.03	0.41
2:B:244:LEU:O	2:B:244:LEU:HD23	2.21	0.41
2:B:68:ALA:HB3	2:B:73:TYR:OH	2.21	0.41
2:B:83:ALA:C	2:B:84:LEU:HD12	2.40	0.41
4:D:164:THR:O	4:D:167:LEU:HB3	2.19	0.41
3:C:83:ARG:HA	4:D:77:TYR:OH	2.20	0.41

*Continued on next page...*

*Continued from previous page...*

Atom-1	Atom-2	Interatomic distance (Å)	Clash overlap (Å)
1:A:215:GLN:H	1:A:218:LYS:HE2	1.85	0.41
1:A:276:ASN:ND2	1:A:343:ALA:HB3	2.36	0.41
1:A:454:TYR:CD1	1:A:475:ASN:HA	2.56	0.41
2:B:231:ARG:O	2:B:232:ILE:HD13	2.20	0.41
2:B:245:SER:O	2:B:247:VAL:HG23	2.21	0.41
2:B:346:LEU:HA	2:B:346:LEU:HD13	1.85	0.41
4:D:29:ASP:OD1	4:D:30:ASN:N	2.53	0.41
5:E:101:LEU:HD12	5:E:102:THR:N	2.36	0.41
1:A:250:ASP:OD2	1:A:252:LYS:HD3	2.21	0.41
1:A:432:TYR:C	1:A:438:VAL:HG22	2.41	0.41
1:A:557:SER:OG	1:A:560:ASP:HB2	2.21	0.41
1:A:671:LYS:HD2	1:A:671:LYS:H	1.86	0.41
2:B:112:SER:OG	2:B:127:GLU:HG3	2.19	0.41
3:C:82:ILE:HB	4:D:107:TYR:HE1	1.85	0.41
4:D:212:ARG:HD3	4:D:243:SER:O	2.21	0.41
4:D:75:LEU:HA	4:D:75:LEU:HD23	1.92	0.41
1:A:347:PHE:CG	5:E:36:ASN:HA	2.56	0.41
1:A:396:GLU:H	1:A:420:GLU:N	2.18	0.41
2:B:122:VAL:HB	2:B:136:THR:HG22	2.03	0.41
2:B:298:LEU:HD23	2:B:298:LEU:N	2.36	0.41
2:B:328:THR:HG22	2:B:368:GLN:CA	2.51	0.41
1:A:347:PHE:CD1	5:E:36:ASN:HA	2.55	0.41
1:A:95:ALA:HA	1:A:121:VAL:HG23	2.03	0.40
1:A:194:ILE:O	1:A:196:HIS:N	2.54	0.40
1:A:270:GLY:H	1:A:336:LYS:HD2	1.85	0.40
1:A:327:GLU:C	1:A:335:VAL:HG23	2.41	0.40
1:A:365:LEU:O	1:A:368:GLU:N	2.54	0.40
2:B:195:ARG:N	2:B:243:ARG:HH12	2.17	0.40
2:B:248:ASP:N	2:B:287:ASN:O	2.54	0.40
2:B:322:LEU:HD13	2:B:322:LEU:HA	1.83	0.40
4:D:192:VAL:HG13	4:D:193:ALA:H	1.85	0.40
5:E:101:LEU:HD12	5:E:102:THR:H	1.86	0.40
1:A:386:LYS:HD3	1:A:400:THR:CB	2.47	0.40
1:A:386:LYS:O	1:A:398:VAL:HG21	2.20	0.40
1:A:476:PRO:HA	1:A:484:SER:OG	2.21	0.40
2:B:160:GLY:HA2	2:B:176:GLU:CD	2.42	0.40
4:D:192:VAL:N	4:D:225:MET:HE3	2.36	0.40
5:E:92:THR:CG2	5:E:105:ASP:HB2	2.51	0.40
5:E:107:LYS:HD2	5:E:107:LYS:HA	1.87	0.40
1:A:522:TYR:CE2	1:A:580:LYS:HG3	2.55	0.40
2:B:31:LYS:HA	2:B:31:LYS:HD2	1.89	0.40

*Continued on next page...*

Continued from previous page...

Atom-1	Atom-2	Interatomic distance (Å)	Clash overlap (Å)
1:A:304:MET:HB2	1:A:304:MET:HE2	1.92	0.40
1:A:361:LYS:O	1:A:364:VAL:HG12	2.22	0.40
1:A:541:PRO:HG3	1:A:677:HIS:CD2	2.56	0.40
2:B:245:SER:HB2	2:B:286:VAL:C	2.40	0.40
2:B:348:TRP:O	2:B:356:PHE:HA	2.21	0.40
2:B:66:ALA:O	2:B:73:TYR:N	2.54	0.40
3:C:75:ALA:O	3:C:80:LEU:HD22	2.22	0.40
4:D:214:ALA:O	4:D:215:LEU:C	2.60	0.40
1:A:383:ASP:HA	1:A:386:LYS:HE2	2.03	0.40
1:A:699:LEU:HD12	1:A:699:LEU:H	1.86	0.40
2:B:124:ILE:HA	2:B:124:ILE:HD12	1.97	0.40
2:B:172:GLN:HG2	2:B:184:THR:HA	2.04	0.40
2:B:194:LEU:HA	2:B:243:ARG:NH2	2.35	0.40
2:B:54:SER:HA	2:B:55:GLY:HA3	1.75	0.40
2:B:80:LEU:HD13	2:B:95:VAL:O	2.21	0.40
5:E:39:THR:H	5:E:42:ASP:CG	2.24	0.40

There are no symmetry-related clashes.

## 5.3 Torsion angles [i](#)

### 5.3.1 Protein backbone [i](#)

In the following table, the Percentiles column shows the percent Ramachandran outliers of the chain as a percentile score with respect to all PDB entries followed by that with respect to all EM entries.

The Analysed column shows the number of residues for which the backbone conformation was analysed, and the total number of residues.

Mol	Chain	Analysed	Favoured	Allowed	Outliers	Percentiles	
1	A	706/810 (87%)	533 (76%)	166 (24%)	7 (1%)	15	54
2	B	365/400 (91%)	273 (75%)	90 (25%)	2 (0%)	29	68
3	C	44/344 (13%)	28 (64%)	16 (36%)	0	100	100
4	D	216/245 (88%)	179 (83%)	36 (17%)	1 (0%)	29	68
5	E	85/119 (71%)	66 (78%)	19 (22%)	0	100	100
All	All	1416/1918 (74%)	1079 (76%)	327 (23%)	10 (1%)	26	62

All (10) Ramachandran outliers are listed below:



Mol	Chain	Res	Type
1	A	434	THR
1	A	440	PHE
1	A	464	ASP
1	A	805	ASN
2	B	256	GLY
1	A	433	GLY
1	A	439	SER
1	A	437	GLY
2	B	255	ASN
4	D	206	PRO

### 5.3.2 Protein sidechains [i](#)

In the following table, the Percentiles column shows the percent sidechain outliers of the chain as a percentile score with respect to all PDB entries followed by that with respect to all EM entries.

The Analysed column shows the number of residues for which the sidechain conformation was analysed, and the total number of residues.

Mol	Chain	Analysed	Rotameric	Outliers	Percentiles	
1	A	593/688 (86%)	580 (98%)	13 (2%)	52	70
2	B	298/329 (91%)	293 (98%)	5 (2%)	60	78
3	C	34/276 (12%)	34 (100%)	0	100	100
4	D	183/204 (90%)	182 (100%)	1 (0%)	88	93
5	E	76/101 (75%)	76 (100%)	0	100	100
All	All	1184/1598 (74%)	1165 (98%)	19 (2%)	64	79

All (19) residues with a non-rotameric sidechain are listed below:

Mol	Chain	Res	Type
1	A	241	ASP
1	A	394	PHE
1	A	404	ARG
1	A	419	LYS
1	A	421	ARG
1	A	423	THR
1	A	425	SER
1	A	430	ILE
1	A	438	VAL
1	A	538	ASN

*Continued on next page...*

*Continued from previous page...*

Mol	Chain	Res	Type
1	A	734	ARG
1	A	804	PHE
1	A	806	ILE
2	B	193	SER
2	B	263	TYR
2	B	273	ARG
2	B	295	ARG
2	B	331	VAL
4	D	173	ARG

Sometimes sidechains can be flipped to improve hydrogen bonding and reduce clashes. All (32) such sidechains are listed below:

Mol	Chain	Res	Type
1	A	178	GLN
1	A	196	HIS
1	A	198	GLN
1	A	239	ASN
1	A	265	GLN
1	A	280	HIS
1	A	459	ASN
1	A	463	ASN
1	A	538	ASN
1	A	561	GLN
1	A	573	ASN
1	A	606	ASN
1	A	664	GLN
1	A	681	ASN
1	A	753	GLN
1	A	765	ASN
1	A	803	GLN
2	B	121	HIS
2	B	172	GLN
2	B	225	GLN
2	B	266	ASN
2	B	287	ASN
2	B	301	GLN
2	B	324	HIS
4	D	30	ASN
4	D	47	ASN
4	D	139	HIS
4	D	158	GLN
4	D	196	ASN

*Continued on next page...*

*Continued from previous page...*

Mol	Chain	Res	Type
4	D	220	ASN
5	E	36	ASN
5	E	89	GLN

### 5.3.3 RNA [i](#)

There are no RNA molecules in this entry.

### 5.4 Non-standard residues in protein, DNA, RNA chains [i](#)

There are no non-standard protein/DNA/RNA residues in this entry.

### 5.5 Carbohydrates [i](#)

There are no monosaccharides in this entry.

### 5.6 Ligand geometry [i](#)

There are no ligands in this entry.

### 5.7 Other polymers [i](#)

There are no such residues in this entry.

### 5.8 Polymer linkage issues [i](#)

There are no chain breaks in this entry.

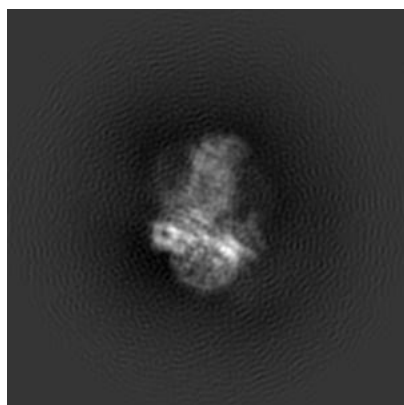
## 6 Map visualisation [i](#)

This section contains visualisations of the EMDB entry EMD-30018. These allow visual inspection of the internal detail of the map and identification of artifacts.

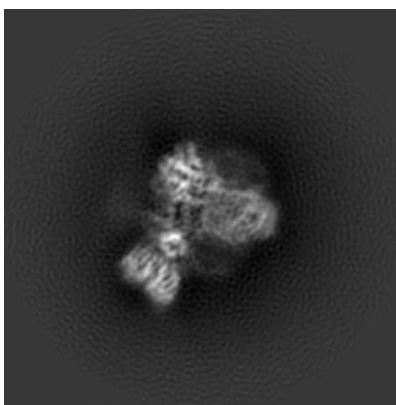
No raw map or half-maps were deposited for this entry and therefore no images, graphs, etc. pertaining to the raw map can be shown.

### 6.1 Orthogonal projections [i](#)

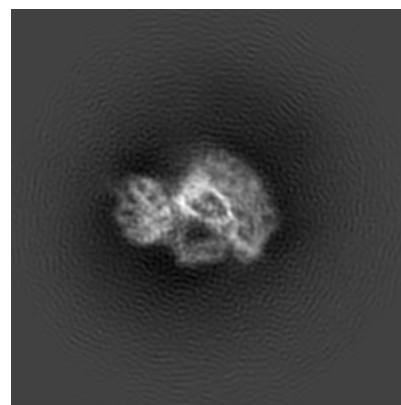
#### 6.1.1 Primary map



X



Y

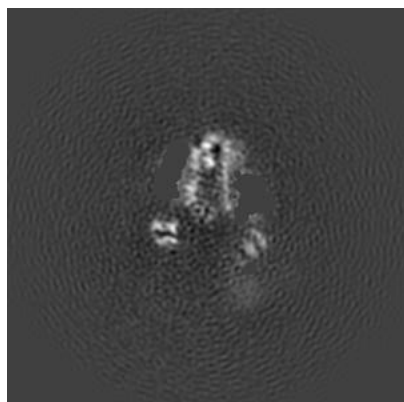


Z

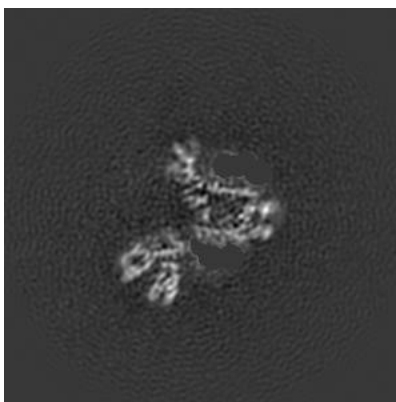
The images above show the map projected in three orthogonal directions.

### 6.2 Central slices [i](#)

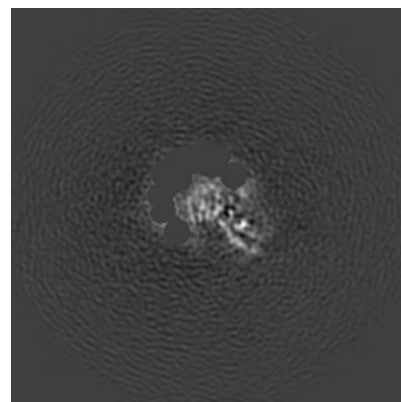
#### 6.2.1 Primary map



X Index: 148



Y Index: 148

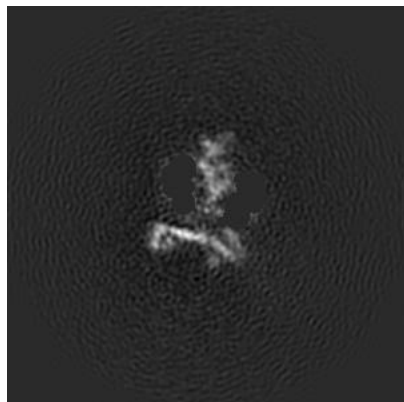


Z Index: 148

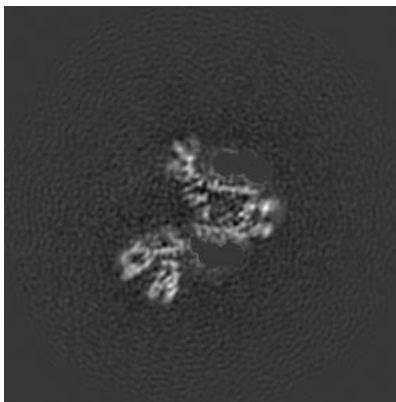
The images above show central slices of the map in three orthogonal directions.

## 6.3 Largest variance slices [i](#)

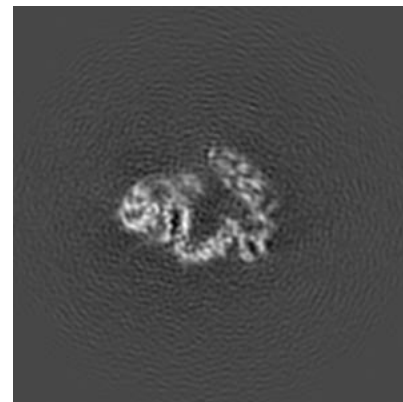
### 6.3.1 Primary map



X Index: 127



Y Index: 148

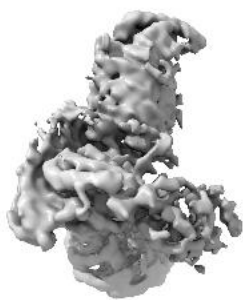


Z Index: 125

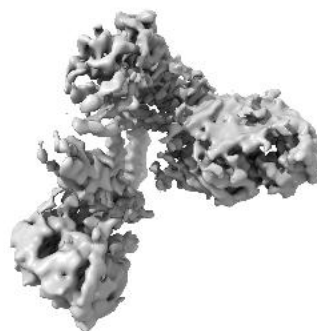
The images above show the largest variance slices of the map in three orthogonal directions.

## 6.4 Orthogonal surface views [i](#)

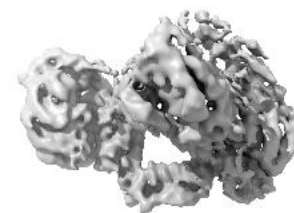
### 6.4.1 Primary map



X



Y



Z

The images above show the 3D surface view of the map at the recommended contour level 0.0126. These images, in conjunction with the slice images, may facilitate assessment of whether an appropriate contour level has been provided.

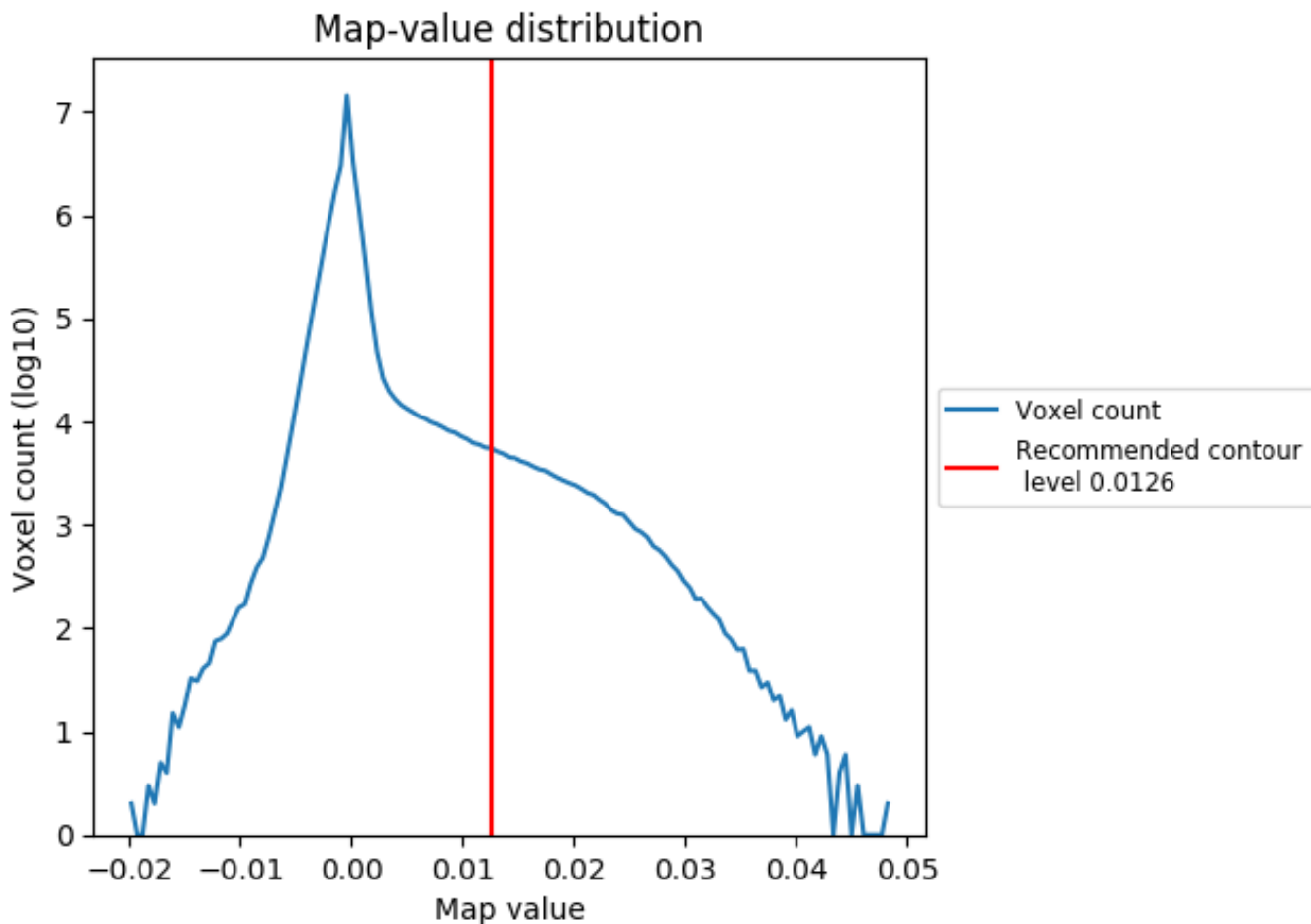
## 6.5 Mask visualisation

This section was not generated. No masks/segmentation were deposited.

## 7 Map analysis [i](#)

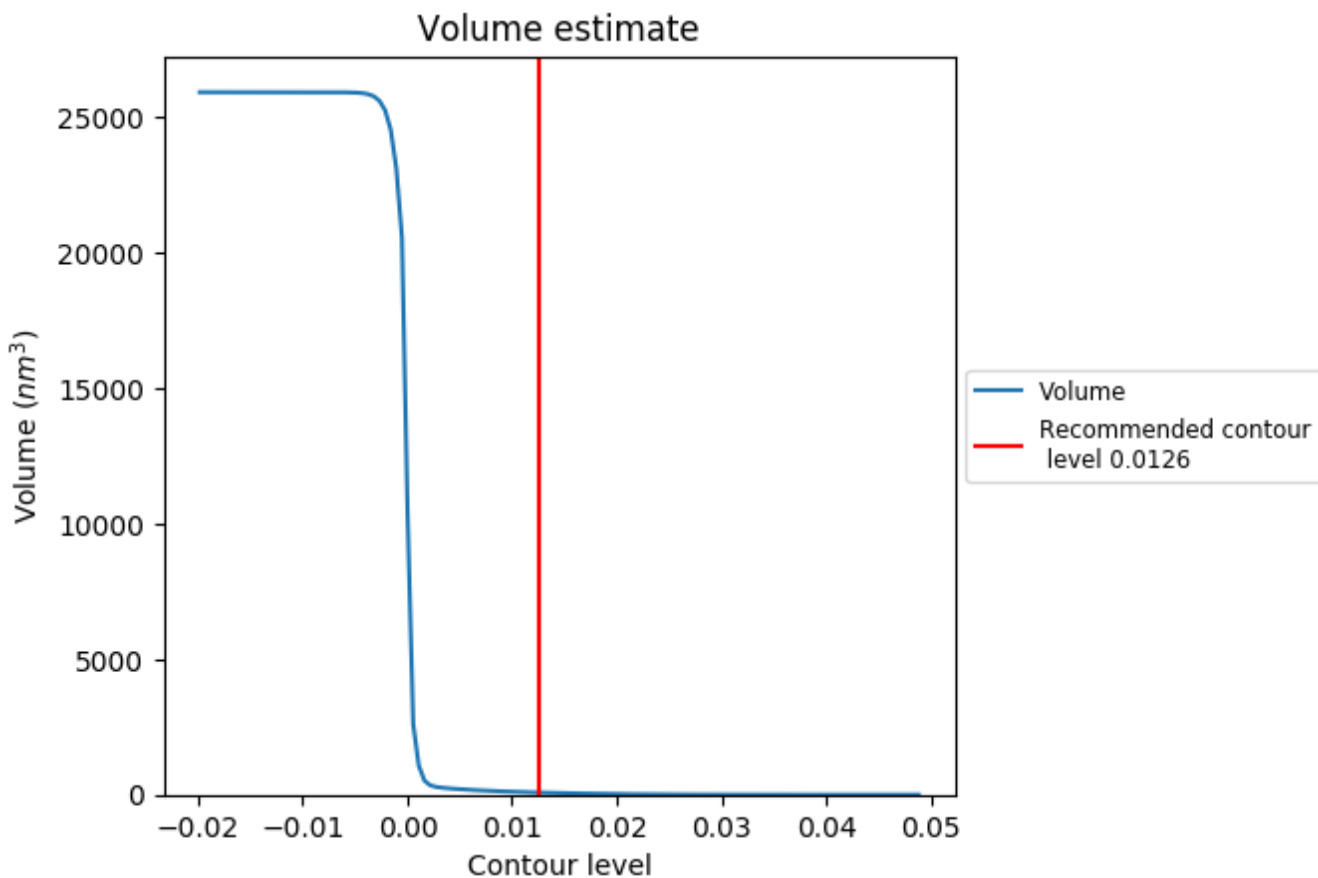
This section contains the results of statistical analysis of the map.

### 7.1 Map-value distribution [i](#)



The map-value distribution is plotted in 128 intervals along the x-axis. The y-axis is logarithmic. A spike in this graph at zero usually indicates that the volume has been masked.

## 7.2 Volume estimate [\(i\)](#)

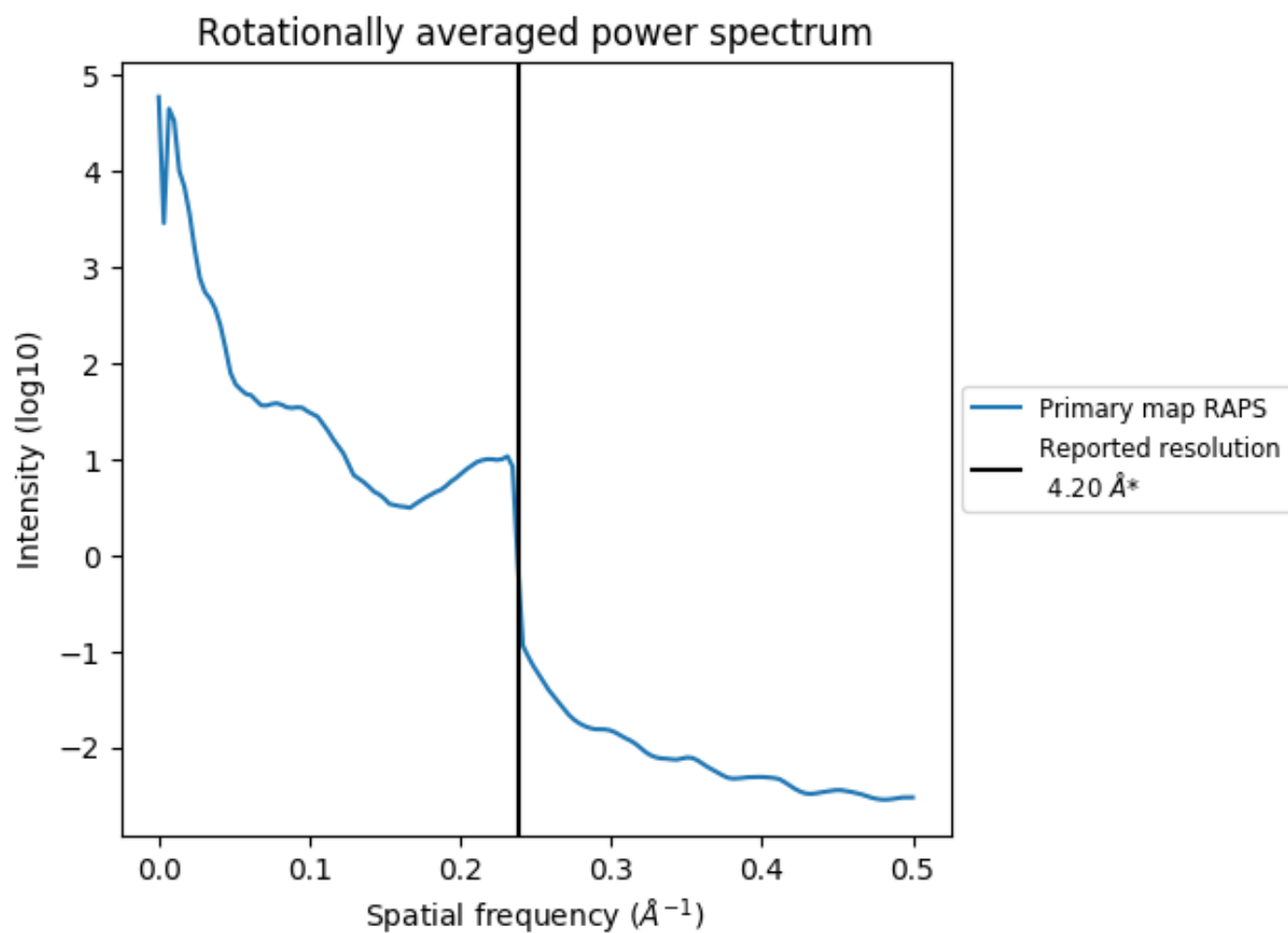


The volume at the recommended contour level is 78 nm<sup>3</sup>; this corresponds to an approximate mass of 71 kDa.

The volume estimate graph shows how the enclosed volume varies with the contour level. The recommended contour level is shown as a vertical line and the intersection between the line and the curve gives the volume of the enclosed surface at the given level.



### 7.3 Rotationally averaged power spectrum [i](#)



\*Reported resolution corresponds to spatial frequency of  $0.238 \text{\AA}^{-1}$

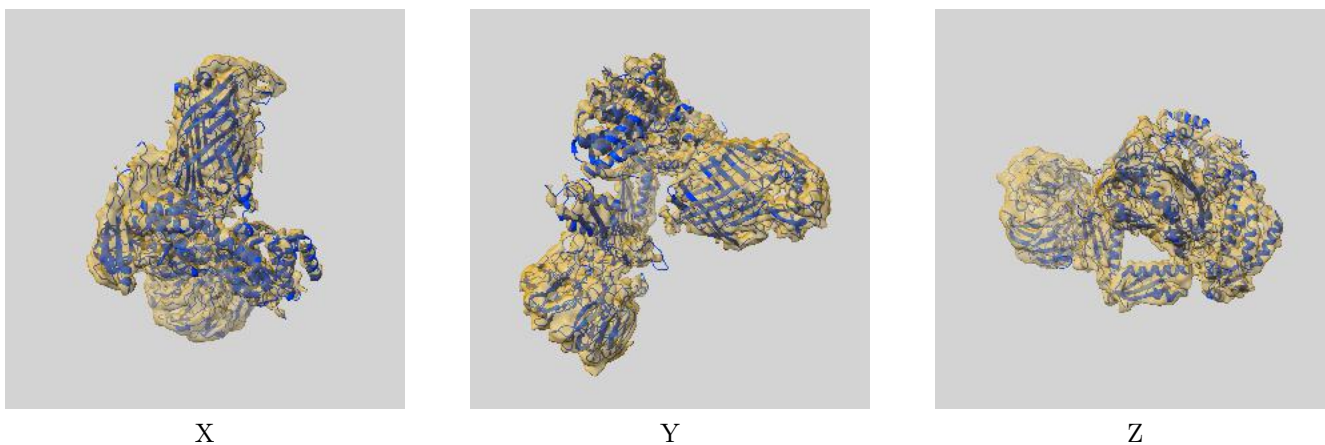
## 8 Fourier-Shell correlation

This section was not generated. No FSC curve or half-maps provided.

## 9 Map-model fit [i](#)

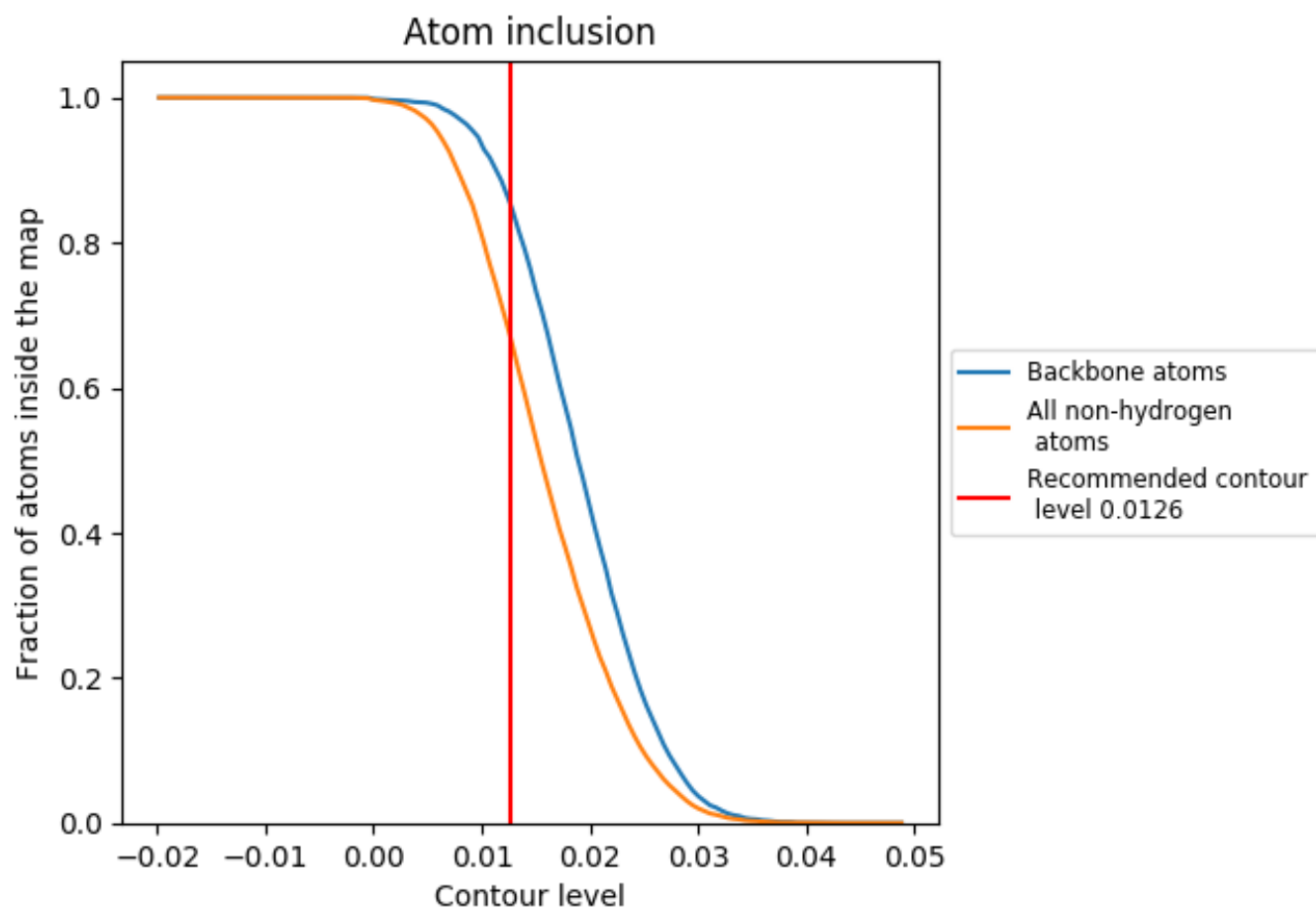
This section contains information regarding the fit between EMDB map EMD-30018 and PDB model 6LYU. Per-residue inclusion information can be found in section 3 on page 5.

### 9.1 Map-model overlay [i](#)



The images above show the 3D surface view of the map at the recommended contour level 0.0126 at 50% transparency in yellow overlaid with a ribbon representation of the model coloured in blue. These images allow for the visual assessment of the quality of fit between the atomic model and the map.

## 9.2 Atom inclusion [i](#)



At the recommended contour level, 86% of all backbone atoms, 67% of all non-hydrogen atoms, are inside the map.