



Full wwPDB X-ray Structure Validation Report ⓘ

Aug 8, 2020 – 09:39 PM BST

PDB ID : 3M3D
Title : Crystal structure of Acetylcholinesterase in complex with Xenon
Authors : Behnen, J.; Brumshtein, B.; Toker, L.; Silman, I.; Sussman, J.L.; Klebe, G.; Heine, A.
Deposited on : 2010-03-09
Resolution : 2.34 Å(reported)

This is a Full wwPDB X-ray Structure Validation Report for a publicly released PDB entry.

We welcome your comments at validation@mail.wwpdb.org

A user guide is available at

<https://www.wwpdb.org/validation/2017/XrayValidationReportHelp>

with specific help available everywhere you see the ⓘ symbol.

The following versions of software and data (see [references ⓘ](#)) were used in the production of this report:

MolProbity : 4.02b-467
Mogul : 1.8.5 (274361), CSD as541be (2020)
Xtriage (Phenix) : 1.13
EDS : 2.13.1
Percentile statistics : 20191225.v01 (using entries in the PDB archive December 25th 2019)
Refmac : 5.8.0158
CCP4 : 7.0.044 (Gargrove)
Ideal geometry (proteins) : Engh & Huber (2001)
Ideal geometry (DNA, RNA) : Parkinson et al. (1996)
Validation Pipeline (wwPDB-VP) : 2.13.1

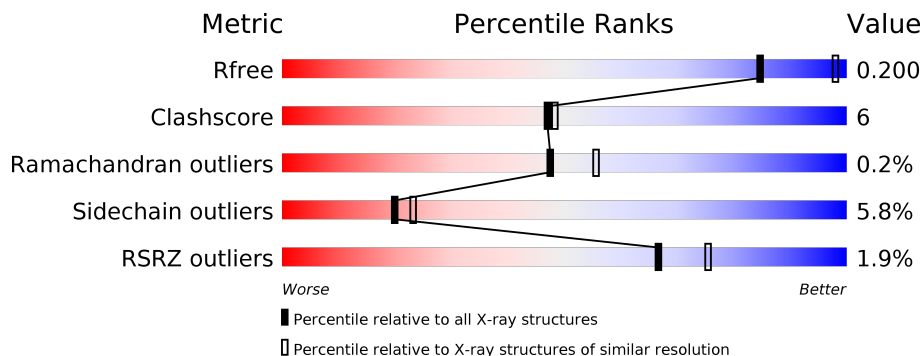
1 Overall quality at a glance

The following experimental techniques were used to determine the structure:

X-RAY DIFFRACTION

The reported resolution of this entry is 2.34 Å.

Percentile scores (ranging between 0-100) for global validation metrics of the entry are shown in the following graphic. The table shows the number of entries on which the scores are based.



Metric	Whole archive (#Entries)	Similar resolution (#Entries, resolution range(Å))
R_{free}	130704	2096 (2.36-2.32)
Clashscore	141614	2193 (2.36-2.32)
Ramachandran outliers	138981	2159 (2.36-2.32)
Sidechain outliers	138945	2160 (2.36-2.32)
RSRZ outliers	127900	2067 (2.36-2.32)

The table below summarises the geometric issues observed across the polymeric chains and their fit to the electron density. The red, orange, yellow and green segments on the lower bar indicate the fraction of residues that contain outliers for ≥ 3 , 2, 1 and 0 types of geometric quality criteria respectively. A grey segment represents the fraction of residues that are not modelled. The numeric value for each fraction is indicated below the corresponding segment, with a dot representing fractions $\leq 5\%$. The upper red bar (where present) indicates the fraction of residues that have poor fit to the electron density. The numeric value is given above the bar.

Mol	Chain	Length	Quality of chain
1	A	543	

The following table lists non-polymeric compounds, carbohydrate monomers and non-standard residues in protein, DNA, RNA chains that are outliers for geometric or electron-density-fit criteria:

Mol	Type	Chain	Res	Chirality	Geometry	Clashes	Electron density
4	PG4	A	805[A]	-	-	-	X
4	PG4	A	805[B]	-	-	-	X

Continued on next page...

Continued from previous page...

Mol	Type	Chain	Res	Chirality	Geometry	Clashes	Electron density
5	PEG	A	905	-	-	-	X

2 Entry composition [i](#)

There are 6 unique types of molecules in this entry. The entry contains 4505 atoms, of which 0 are hydrogens and 0 are deuteriums.

In the tables below, the ZeroOcc column contains the number of atoms modelled with zero occupancy, the AltConf column contains the number of residues with at least one atom in alternate conformation and the Trace column contains the number of residues modelled with at most 2 atoms.

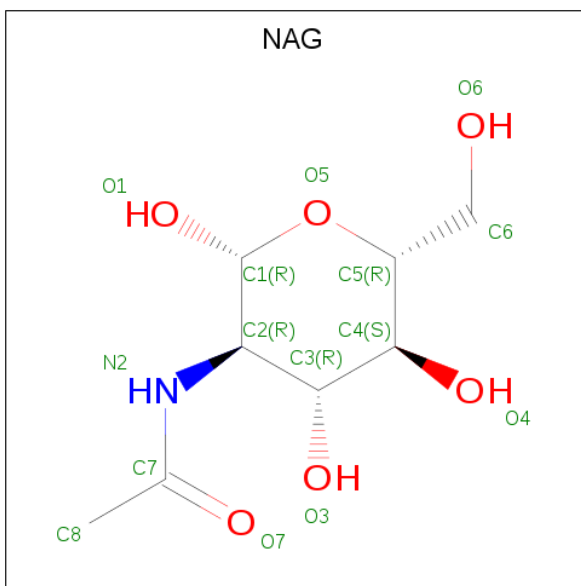
- Molecule 1 is a protein called Acetylcholinesterase.

Mol	Chain	Residues	Atoms					ZeroOcc	AltConf	Trace
			Total	C	N	O	S			
1	A	532	4207	2705	709	771	22	0	3	0

- Molecule 2 is XENON (three-letter code: XE) (formula: Xe).

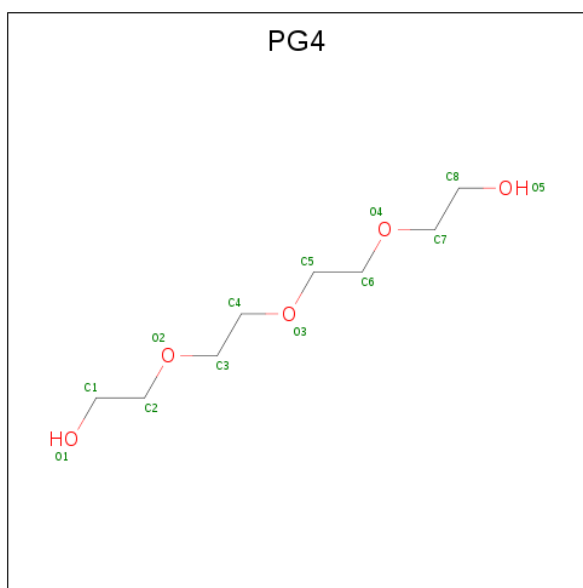
Mol	Chain	Residues	Atoms	ZeroOcc	AltConf
2	A	2	Total 2 Xe	0	0

- Molecule 3 is 2-acetamido-2-deoxy-beta-D-glucopyranose (three-letter code: NAG) (formula: C₈H₁₅NO₆).



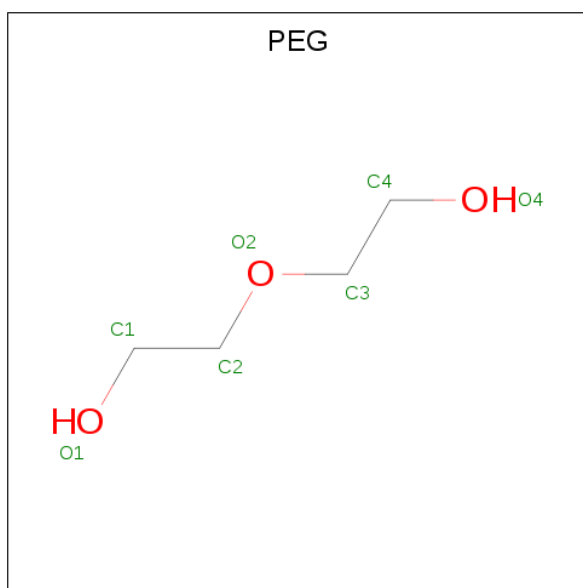
Mol	Chain	Residues	Atoms	ZeroOcc	AltConf
3	A	1	Total 14 C N O	0	0
3	A	1	Total 14 C N O	0	0

- Molecule 4 is TETRAETHYLENE GLYCOL (three-letter code: PG4) (formula: $C_8H_{18}O_5$).



Mol	Chain	Residues	Atoms			ZeroOcc	AltConf
4	A	1	Total	C	O	0	1
			16	10	6		

- Molecule 5 is DI(HYDROXYETHYL)ETHER (three-letter code: PEG) (formula: $C_4H_{10}O_3$).



Mol	Chain	Residues	Atoms			ZeroOcc	AltConf
5	A	1	Total	C	O	0	0
			7	4	3		
5	A	1	Total	C	O	0	0
			7	4	3		

Continued on next page...

Continued from previous page...

Mol	Chain	Residues	Atoms			ZeroOcc	AltConf
5	A	1	Total	C	O	0	0
			7	4	3		
5	A	1	Total	C	O	0	0
			7	4	3		
5	A	1	Total	C	O	0	0
			7	4	3		
5	A	1	Total	C	O	0	0
			7	4	3		

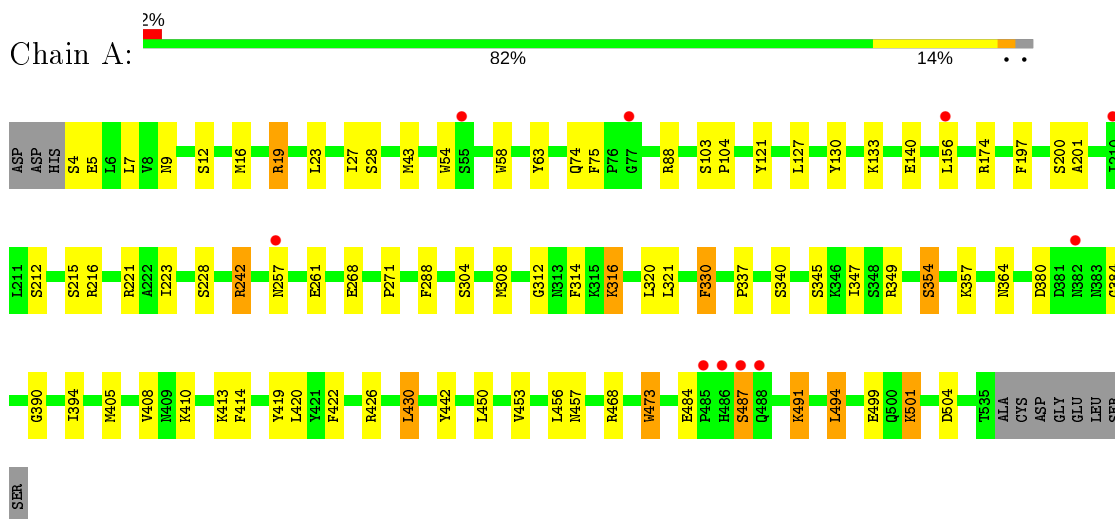
- Molecule 6 is water.

Mol	Chain	Residues	Atoms		ZeroOcc	AltConf
6	A	210	Total	O	0	0
			210	210		

3 Residue-property plots [i](#)

These plots are drawn for all protein, RNA, DNA and oligosaccharide chains in the entry. The first graphic for a chain summarises the proportions of the various outlier classes displayed in the second graphic. The second graphic shows the sequence view annotated by issues in geometry and electron density. Residues are color-coded according to the number of geometric quality criteria for which they contain at least one outlier: green = 0, yellow = 1, orange = 2 and red = 3 or more. A red dot above a residue indicates a poor fit to the electron density ($RSRZ > 2$). Stretches of 2 or more consecutive residues without any outlier are shown as a green connector. Residues present in the sample, but not in the model, are shown in grey.

- Molecule 1: Acetylcholinesterase



4 Data and refinement statistics

Property	Value	Source
Space group	P 31 2 1	Depositor
Cell constants a, b, c, α , β , γ	111.77Å 111.77Å 137.23Å 90.00° 90.00° 120.00°	Depositor
Resolution (Å)	10.00 – 2.34 19.77 – 2.34	Depositor EDS
% Data completeness (in resolution range)	100.0 (10.00-2.34) 94.8 (19.77-2.34)	Depositor EDS
R_{merge}	(Not available)	Depositor
R_{sym}	0.10	Depositor
$\langle I/\sigma(I) \rangle$ ¹	3.82 (at 2.33Å)	Xtriage
Refinement program	SHELXL-97	Depositor
R, R_{free}	0.190 , 0.200 0.190 , 0.200	Depositor DCC
R_{free} test set	7591 reflections (9.39%)	wwPDB-VP
Wilson B-factor (Å ²)	28.6	Xtriage
Anisotropy	0.735	Xtriage
Bulk solvent k_{sol} (e/Å ³), B_{sol} (Å ²)	0.39 , 71.4	EDS
L-test for twinning ²	$\langle L \rangle = 0.49$, $\langle L^2 \rangle = 0.32$	Xtriage
Estimated twinning fraction	0.026 for -h,-k,l	Xtriage
F_o, F_c correlation	0.95	EDS
Total number of atoms	4505	wwPDB-VP
Average B, all atoms (Å ²)	43.0	wwPDB-VP

Xtriage's analysis on translational NCS is as follows: *The largest off-origin peak in the Patterson function is 3.32% of the height of the origin peak. No significant pseudotranslation is detected.*

¹Intensities estimated from amplitudes.

²Theoretical values of $\langle |L| \rangle$, $\langle L^2 \rangle$ for acentric reflections are 0.5, 0.333 respectively for untwinned datasets, and 0.375, 0.2 for perfectly twinned datasets.

5 Model quality [i](#)

5.1 Standard geometry [i](#)

Bond lengths and bond angles in the following residue types are not validated in this section: PG4, PEG, NAG, XE

The Z score for a bond length (or angle) is the number of standard deviations the observed value is removed from the expected value. A bond length (or angle) with $|Z| > 5$ is considered an outlier worth inspection. RMSZ is the root-mean-square of all Z scores of the bond lengths (or angles).

Mol	Chain	Bond lengths		Bond angles	
		RMSZ	# $ Z > 5$	RMSZ	# $ Z > 5$
1	A	0.32	0/4338	0.92	7/5898 (0.1%)

There are no bond length outliers.

All (7) bond angle outliers are listed below:

Mol	Chain	Res	Type	Atoms	Z	Observed($^{\circ}$)	Ideal($^{\circ}$)
1	A	174	ARG	CD-NE-CZ	7.70	134.37	123.60
1	A	88	ARG	NE-CZ-NH1	-7.08	116.76	120.30
1	A	349	ARG	NE-CZ-NH2	-6.66	116.97	120.30
1	A	242	ARG	NE-CZ-NH1	5.58	123.09	120.30
1	A	442	TYR	CA-CB-CG	-5.56	102.84	113.40
1	A	494	LEU	CA-CB-CG	5.49	127.93	115.30
1	A	221	ARG	NE-CZ-NH1	5.47	123.03	120.30

There are no chirality outliers.

There are no planarity outliers.

5.2 Too-close contacts [i](#)

In the following table, the Non-H and H(model) columns list the number of non-hydrogen atoms and hydrogen atoms in the chain respectively. The H(added) column lists the number of hydrogen atoms added and optimized by MolProbity. The Clashes column lists the number of clashes within the asymmetric unit, whereas Symm-Clashes lists symmetry related clashes.

Mol	Chain	Non-H	H(model)	H(added)	Clashes	Symm-Clashes
1	A	4207	0	4027	48	0
2	A	2	0	0	1	0
3	A	28	0	26	0	0
4	A	16	0	10	4	0

Continued on next page...

Continued from previous page...

Mol	Chain	Non-H	H(model)	H(added)	Clashes	Symm-Clashes
5	A	42	0	60	12	0
6	A	210	0	0	6	0
All	All	4505	0	4123	52	0

The all-atom clashscore is defined as the number of clashes found per 1000 atoms (including hydrogen atoms). The all-atom clashscore for this structure is 6.

All (52) close contacts within the same asymmetric unit are listed below, sorted by their clash magnitude.

Atom-1	Atom-2	Interatomic distance (Å)	Clash overlap (Å)
1:A:330[B]:PHE:HE2	4:A:805[B]:PG4:HO5	1.26	0.81
1:A:504:ASP:OD1	5:A:907:PEG:H41	1.84	0.78
1:A:450:LEU:O	1:A:456:LEU:HD12	1.87	0.74
1:A:121:TYR:OH	4:A:805[A]:PG4:H71	1.94	0.67
1:A:5:GLU:OE2	1:A:104:PRO:HA	1.94	0.67
1:A:316:LYS:NZ	5:A:906:PEG:H32	2.13	0.63
1:A:7:LEU:HD23	1:A:16[A]:MET:SD	2.39	0.62
1:A:426:ARG:CZ	1:A:430:LEU:HD12	2.34	0.58
1:A:422:PHE:CE2	5:A:907:PEG:H31	2.41	0.55
1:A:337:PRO:HG3	1:A:354:SER:OG	2.08	0.54
1:A:127:LEU:HD12	1:A:130:TYR:CE2	2.43	0.53
1:A:501:LYS:HD2	6:A:1023:HOH:O	2.08	0.53
1:A:312:GLY:HA2	1:A:314:PHE:CE2	2.44	0.53
1:A:271:PRO:HD2	6:A:1095:HOH:O	2.08	0.51
1:A:19:ARG:HH12	1:A:103:SER:CB	2.24	0.51
1:A:426:ARG:NH1	1:A:430:LEU:HD12	2.25	0.51
1:A:12:SER:HB3	1:A:54:TRP:CZ3	2.46	0.51
1:A:74:GLN:HG3	1:A:75:PHE:CE2	2.45	0.51
1:A:345:SER:O	1:A:347:ILE:HG12	2.10	0.50
1:A:316:LYS:HZ3	5:A:906:PEG:H32	1.76	0.50
1:A:405:MET:O	1:A:408:VAL:HG12	2.10	0.50
1:A:9:ASN:ND2	5:A:903:PEG:H21	2.27	0.49
1:A:316:LYS:HG3	5:A:906:PEG:H12	1.95	0.49
1:A:304:SER:O	1:A:308:MET:HG3	2.14	0.47
1:A:9:ASN:HD22	5:A:903:PEG:H21	1.79	0.47
1:A:456:LEU:O	1:A:457:ASN:HB2	2.13	0.47
1:A:330[B]:PHE:HE2	4:A:805[B]:PG4:O5	1.92	0.47
5:A:904:PEG:H32	5:A:904:PEG:H12	1.41	0.47
1:A:347:ILE:O	1:A:384:GLY:HA2	2.15	0.46
1:A:419:TYR:CZ	1:A:494:LEU:HD13	2.50	0.46
1:A:58:TRP:CD2	5:A:901:PEG:H11	2.51	0.45

Continued on next page...

Continued from previous page...

Atom-1	Atom-2	Interatomic distance (Å)	Clash overlap (Å)
1:A:200[A]:SER:OG	1:A:201:ALA:N	2.50	0.45
1:A:74:GLN:HG3	1:A:75:PHE:CD2	2.52	0.44
1:A:223:ILE:HA	1:A:320:LEU:O	2.18	0.44
1:A:484:GLU:O	1:A:487:SER:HB3	2.17	0.44
1:A:257:ASN:HB2	1:A:261:GLU:OE1	2.18	0.43
1:A:357:LYS:HD2	6:A:1042:HOH:O	2.19	0.43
5:A:905:PEG:H11	6:A:1212:HOH:O	2.18	0.42
1:A:212:SER:O	1:A:216:ARG:HG3	2.19	0.42
1:A:413:LYS:HE3	1:A:414:PHE:CZ	2.55	0.42
1:A:321:LEU:O	1:A:420:LEU:HA	2.20	0.41
1:A:43:MET:HE2	6:A:1090:HOH:O	2.20	0.41
1:A:473:TRP:CH2	2:A:602:XE:XE	3.51	0.41
5:A:901:PEG:H31	5:A:901:PEG:O1	2.20	0.41
1:A:484:GLU:O	1:A:491:LYS:NZ	2.54	0.41
1:A:390:GLY:O	1:A:394:ILE:HG13	2.21	0.41
1:A:321:LEU:O	1:A:420:LEU:HD12	2.22	0.41
1:A:453:VAL:CG1	1:A:456:LEU:HG	2.51	0.40
1:A:422:PHE:CD2	5:A:907:PEG:H31	2.57	0.40
1:A:27:ILE:HD11	1:A:133:LYS:HB2	2.03	0.40
1:A:414:PHE:HE2	6:A:1059:HOH:O	2.04	0.40

There are no symmetry-related clashes.

5.3 Torsion angles [i](#)

5.3.1 Protein backbone [i](#)

In the following table, the Percentiles column shows the percent Ramachandran outliers of the chain as a percentile score with respect to all X-ray entries followed by that with respect to entries of similar resolution.

The Analysed column shows the number of residues for which the backbone conformation was analysed, and the total number of residues.

Mol	Chain	Analysed	Favoured	Allowed	Outliers	Percentiles
1	A	533/543 (98%)	507 (95%)	25 (5%)	1 (0%)	47 55

All (1) Ramachandran outliers are listed below:

Mol	Chain	Res	Type
1	A	380	ASP

5.3.2 Protein sidechains

In the following table, the Percentiles column shows the percent sidechain outliers of the chain as a percentile score with respect to all X-ray entries followed by that with respect to entries of similar resolution.

The Analysed column shows the number of residues for which the sidechain conformation was analysed, and the total number of residues.

Mol	Chain	Analysed	Rotameric	Outliers	Percentiles
1	A	453/474 (96%)	426 (94%)	27 (6%)	19 22

All (27) residues with a non-rotameric sidechain are listed below:

Mol	Chain	Res	Type
1	A	4	SER
1	A	19	ARG
1	A	23	LEU
1	A	28	SER
1	A	63	TYR
1	A	140	GLU
1	A	156	LEU
1	A	197	PHE
1	A	215	SER
1	A	228	SER
1	A	242	ARG
1	A	268	GLU
1	A	288	PHE
1	A	316	LYS
1	A	330[A]	PHE
1	A	330[B]	PHE
1	A	340	SER
1	A	354	SER
1	A	364	ASN
1	A	410	LYS
1	A	430	LEU
1	A	468	ARG
1	A	473	TRP
1	A	487	SER
1	A	491	LYS
1	A	499	GLU
1	A	501	LYS

Some sidechains can be flipped to improve hydrogen bonding and reduce clashes. All (4) such sidechains are listed below:

Mol	Chain	Res	Type
1	A	68	GLN
1	A	178	GLN
1	A	364	ASN
1	A	526	GLN

5.3.3 RNA [i](#)

There are no RNA molecules in this entry.

5.4 Non-standard residues in protein, DNA, RNA chains [i](#)

There are no non-standard protein/DNA/RNA residues in this entry.

5.5 Carbohydrates [i](#)

There are no monosaccharides in this entry.

5.6 Ligand geometry [i](#)

Of 12 ligands modelled in this entry, 2 are monoatomic - leaving 10 for Mogul analysis.

In the following table, the Counts columns list the number of bonds (or angles) for which Mogul statistics could be retrieved, the number of bonds (or angles) that are observed in the model and the number of bonds (or angles) that are defined in the Chemical Component Dictionary. The Link column lists molecule types, if any, to which the group is linked. The Z score for a bond length (or angle) is the number of standard deviations the observed value is removed from the expected value. A bond length (or angle) with $|Z| > 2$ is considered an outlier worth inspection. RMSZ is the root-mean-square of all Z scores of the bond lengths (or angles).

Mol	Type	Chain	Res	Link	Bond lengths			Bond angles		
					Counts	RMSZ	# Z > 2	Counts	RMSZ	# Z > 2
5	PEG	A	901	-	6,6,6	0.75	0	5,5,5	0.35	0
5	PEG	A	906	-	6,6,6	0.77	0	5,5,5	0.37	0
5	PEG	A	903	-	6,6,6	0.75	0	5,5,5	0.29	0
3	NAG	A	701	1	14,14,15	0.61	0	17,19,21	1.14	1 (5%)
5	PEG	A	907	-	6,6,6	0.75	0	5,5,5	0.30	0
4	PG4	A	805[A]	-	12,12,12	0.61	0	11,11,11	1.19	1 (9%)
3	NAG	A	702	-	14,14,15	0.57	0	17,19,21	0.89	0
5	PEG	A	905	-	6,6,6	0.77	0	5,5,5	0.23	0
5	PEG	A	904	-	6,6,6	0.75	0	5,5,5	0.30	0
4	PG4	A	805[B]	-	12,12,12	0.60	0	11,11,11	1.24	1 (9%)

In the following table, the Chirals column lists the number of chiral outliers, the number of chiral centers analysed, the number of these observed in the model and the number defined in the Chemical Component Dictionary. Similar counts are reported in the Torsion and Rings columns. '-' means no outliers of that kind were identified.

Mol	Type	Chain	Res	Link	Chirals	Torsions	Rings
5	PEG	A	901	-	-	3/4/4/4	-
5	PEG	A	906	-	-	2/4/4/4	-
5	PEG	A	903	-	-	2/4/4/4	-
3	NAG	A	701	1	-	0/6/23/26	0/1/1/1
5	PEG	A	907	-	-	2/4/4/4	-
4	PG4	A	805[A]	-	-	5/10/10/10	-
3	NAG	A	702	-	-	4/6/23/26	0/1/1/1
5	PEG	A	905	-	-	2/4/4/4	-
5	PEG	A	904	-	-	3/4/4/4	-
4	PG4	A	805[B]	-	-	5/10/10/10	-

There are no bond length outliers.

All (3) bond angle outliers are listed below:

Mol	Chain	Res	Type	Atoms	Z	Observed(°)	Ideal(°)
3	A	701	NAG	C2-N2-C7	-3.10	118.48	122.90
4	A	805[A]	PG4	C5-O3-C4	2.26	123.09	113.29
4	A	805[B]	PG4	C5-O3-C4	2.26	123.09	113.29

There are no chirality outliers.

All (28) torsion outliers are listed below:

Mol	Chain	Res	Type	Atoms
4	A	805[A]	PG4	C1-C2-O2-C3
4	A	805[A]	PG4	C8-C7-O4-C6
5	A	904	PEG	C1-C2-O2-C3
4	A	805[B]	PG4	C1-C2-O2-C3
5	A	906	PEG	C1-C2-O2-C3
3	A	702	NAG	O5-C5-C6-O6
3	A	702	NAG	C4-C5-C6-O6
5	A	903	PEG	O1-C1-C2-O2
5	A	903	PEG	O2-C3-C4-O4
4	A	805[A]	PG4	O3-C5-C6-O4
4	A	805[B]	PG4	O3-C5-C6-O4
3	A	702	NAG	C8-C7-N2-C2

Continued on next page...

Continued from previous page...

Mol	Chain	Res	Type	Atoms
5	A	904	PEG	O2-C3-C4-O4
3	A	702	NAG	O7-C7-N2-C2
5	A	901	PEG	C1-C2-O2-C3
5	A	907	PEG	O1-C1-C2-O2
4	A	805[A]	PG4	O4-C7-C8-O5
5	A	905	PEG	O1-C1-C2-O2
5	A	904	PEG	O1-C1-C2-O2
4	A	805[B]	PG4	O4-C7-C8-O5
5	A	906	PEG	O2-C3-C4-O4
5	A	901	PEG	O2-C3-C4-O4
4	A	805[B]	PG4	C8-C7-O4-C6
5	A	905	PEG	C1-C2-O2-C3
5	A	901	PEG	C4-C3-O2-C2
5	A	907	PEG	C4-C3-O2-C2
4	A	805[A]	PG4	O2-C3-C4-O3
4	A	805[B]	PG4	O2-C3-C4-O3

There are no ring outliers.

8 monomers are involved in 16 short contacts:

Mol	Chain	Res	Type	Clashes	Symm-Clashes
5	A	901	PEG	2	0
5	A	906	PEG	3	0
5	A	903	PEG	2	0
5	A	907	PEG	3	0
4	A	805[A]	PG4	2	0
5	A	905	PEG	1	0
5	A	904	PEG	1	0
4	A	805[B]	PG4	2	0

5.7 Other polymers [i](#)

There are no such residues in this entry.

5.8 Polymer linkage issues [i](#)

There are no chain breaks in this entry.

6 Fit of model and data [i](#)

6.1 Protein, DNA and RNA chains [i](#)

In the following table, the column labelled '#RSRZ> 2' contains the number (and percentage) of RSRZ outliers, followed by percent RSRZ outliers for the chain as percentile scores relative to all X-ray entries and entries of similar resolution. The OWAB column contains the minimum, median, 95th percentile and maximum values of the occupancy-weighted average B-factor per residue. The column labelled 'Q< 0.9' lists the number of (and percentage) of residues with an average occupancy less than 0.9.

Mol	Chain	Analysed	<RSRZ>	#RSRZ>2	OWAB(Å ²)	Q<0.9
1	A	532/543 (97%)	-0.27	10 (1%) 66 75	30, 41, 62, 88	0

All (10) RSRZ outliers are listed below:

Mol	Chain	Res	Type	RSRZ
1	A	486	HIS	4.1
1	A	485	PRO	4.1
1	A	488	GLN	4.0
1	A	156	LEU	3.2
1	A	487	SER	2.8
1	A	210	ILE	2.6
1	A	257	ASN	2.4
1	A	55	SER	2.2
1	A	382	ASN	2.2
1	A	77	GLY	2.1

6.2 Non-standard residues in protein, DNA, RNA chains [i](#)

There are no non-standard protein/DNA/RNA residues in this entry.

6.3 Carbohydrates [i](#)

There are no monosaccharides in this entry.

6.4 Ligands [i](#)

In the following table, the Atoms column lists the number of modelled atoms in the group and the number defined in the chemical component dictionary. The B-factors column lists the minimum, median, 95th percentile and maximum values of B factors of atoms in the group. The column labelled 'Q< 0.9' lists the number of atoms with occupancy less than 0.9.

Mol	Type	Chain	Res	Atoms	RSCC	RSR	B-factors(\AA^2)	Q<0.9
4	PG4	A	805[A]	13/13	0.53	0.49	35,53,59,60	13
4	PG4	A	805[B]	13/13	0.53	0.49	38,53,59,60	13
5	PEG	A	905	7/7	0.65	0.87	31,36,37,37	7
3	NAG	A	702	14/15	0.68	0.35	58,73,81,82	14
5	PEG	A	907	7/7	0.81	0.18	41,53,62,62	7
5	PEG	A	904	7/7	0.82	0.19	37,42,45,46	7
5	PEG	A	906	7/7	0.85	0.33	21,35,36,37	7
5	PEG	A	903	7/7	0.87	0.39	34,36,43,46	7
5	PEG	A	901	7/7	0.88	0.19	49,50,53,62	7
3	NAG	A	701	14/15	0.92	0.23	29,41,56,65	14
2	XE	A	601	1/1	0.94	0.12	63,63,63,63	1
2	XE	A	602	1/1	1.00	0.04	44,44,44,44	1

6.5 Other polymers [i](#)

There are no such residues in this entry.