



Full wwPDB X-ray Structure Validation Report ⓘ

Oct 6, 2024 – 05:11 AM EDT

PDB ID : 1M6Y
Title : Crystal Structure Analysis of TM0872, a Putative SAM-dependent Methyltransferase, Complexed with SAH
Authors : Miller, D.J.; Anderson, W.F.; Midwest Center for Structural Genomics (MCSG)
Deposited on : 2002-07-17
Resolution : 1.90 Å(reported)

This is a Full wwPDB X-ray Structure Validation Report for a publicly released PDB entry.

We welcome your comments at validation@mail.wwpdb.org

A user guide is available at

<https://www.wwpdb.org/validation/2017/XrayValidationReportHelp>

with specific help available everywhere you see the ⓘ symbol.

The types of validation reports are described at

<http://www.wwpdb.org/validation/2017/FAQs#types>.

The following versions of software and data (see [references ⓘ](#)) were used in the production of this report:

MolProbity : 4.02b-467
Mogul : 2022.3.0, CSD as543be (2022)
Xtriage (Phenix) : 1.20.1
EDS : 3.0
buster-report : 1.1.7 (2018)
Percentile statistics : 20231227.v01 (using entries in the PDB archive December 27th 2023)
CCP4 : 9.0.003 (Gargrove)
Density-Fitness : 1.0.11
Ideal geometry (proteins) : Engh & Huber (2001)
Ideal geometry (DNA, RNA) : Parkinson et al. (1996)
Validation Pipeline (wwPDB-VP) : 2.39

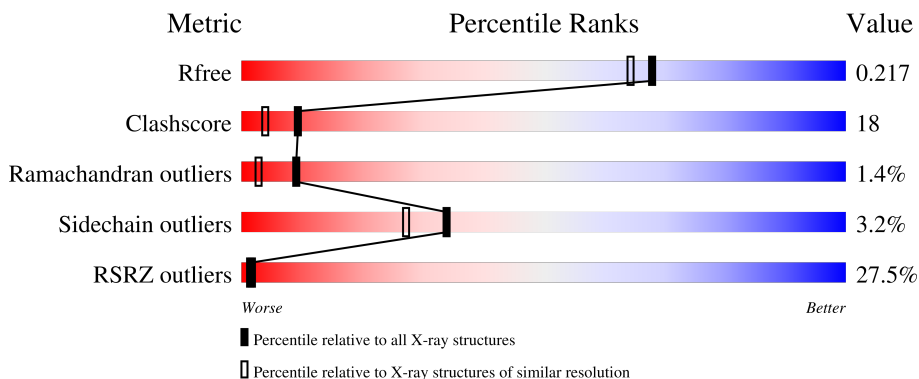
1 Overall quality at a glance

The following experimental techniques were used to determine the structure:

X-RAY DIFFRACTION

The reported resolution of this entry is 1.90 Å.

Percentile scores (ranging between 0-100) for global validation metrics of the entry are shown in the following graphic. The table shows the number of entries on which the scores are based.



Metric	Whole archive (#Entries)	Similar resolution (#Entries, resolution range(Å))
R_{free}	164625	7293 (1.90-1.90)
Clashscore	180529	8090 (1.90-1.90)
Ramachandran outliers	177936	8022 (1.90-1.90)
Sidechain outliers	177891	8022 (1.90-1.90)
RSRZ outliers	164620	7292 (1.90-1.90)

The table below summarises the geometric issues observed across the polymeric chains and their fit to the electron density. The red, orange, yellow and green segments of the lower bar indicate the fraction of residues that contain outliers for ≥ 3 , 2, 1 and 0 types of geometric quality criteria respectively. A grey segment represents the fraction of residues that are not modelled. The numeric value for each fraction is indicated below the corresponding segment, with a dot representing fractions $\leq 5\%$. The upper red bar (where present) indicates the fraction of residues that have poor fit to the electron density. The numeric value is given above the bar.

Mol	Chain	Length	Quality of chain
1	A	301	 5% 82% 14% ••
1	B	301	 47% 54% 36% • 8%

2 Entry composition

There are 4 unique types of molecules in this entry. The entry contains 5064 atoms, of which 0 are hydrogens and 0 are deuteriums.

In the tables below, the ZeroOcc column contains the number of atoms modelled with zero occupancy, the AltConf column contains the number of residues with at least one atom in alternate conformation and the Trace column contains the number of residues modelled with at most 2 atoms.

- Molecule 1 is a protein called S-adenosyl-methyltransferase mraW.

Mol	Chain	Residues	Atoms						ZeroOcc	AltConf	Trace
			Total	C	N	O	S	Se			
1	A	293	2427	1531	443	446	3	4	0	3	0
1	B	278	2208	1401	396	404	3	4	0	0	0

There are 14 discrepancies between the modelled and reference sequences:

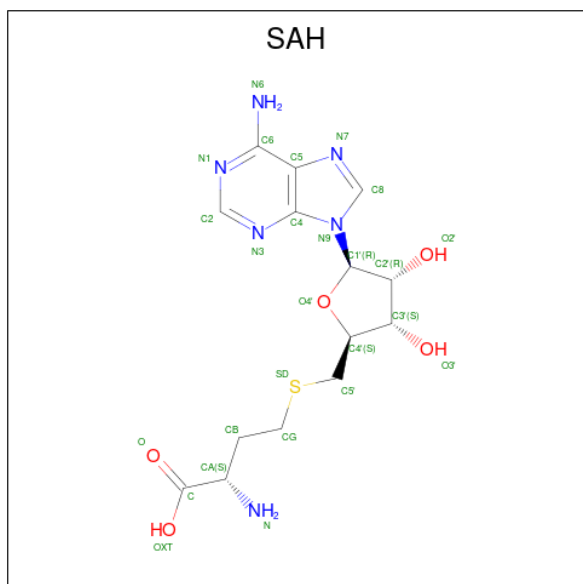
Chain	Residue	Modelled	Actual	Comment	Reference
A	-1	GLY	-	cloning artifact	UNP Q9WZX6
A	0	HIS	-	cloning artifact	UNP Q9WZX6
A	1	MSE	MET	modified residue	UNP Q9WZX6
A	12	MSE	MET	modified residue	UNP Q9WZX6
A	102	MSE	MET	modified residue	UNP Q9WZX6
A	128	MSE	MET	modified residue	UNP Q9WZX6
A	130	MSE	MET	modified residue	UNP Q9WZX6
B	-1	GLY	-	cloning artifact	UNP Q9WZX6
B	0	HIS	-	cloning artifact	UNP Q9WZX6
B	1	MSE	MET	modified residue	UNP Q9WZX6
B	12	MSE	MET	modified residue	UNP Q9WZX6
B	102	MSE	MET	modified residue	UNP Q9WZX6
B	128	MSE	MET	modified residue	UNP Q9WZX6
B	130	MSE	MET	modified residue	UNP Q9WZX6

- Molecule 2 is SULFATE ION (three-letter code: SO4) (formula: O₄S).



Mol	Chain	Residues	Atoms	ZeroOcc	AltConf
2	A	1	Total O S 5 4 1	0	0
2	B	1	Total O S 5 4 1	0	0

- Molecule 3 is S-ADENOSYL-L-HOMOCYSTEINE (three-letter code: SAH) (formula: $C_{14}H_{20}N_6O_5S$).



Mol	Chain	Residues	Atoms	ZeroOcc	AltConf
3	A	1	Total C N O S 26 14 6 5 1	0	0

Continued on next page...

Continued from previous page...

Mol	Chain	Residues	Atoms					ZeroOcc	AltConf
			Total	C	N	O	S		
3	B	1	26	14	6	5	1	0	0

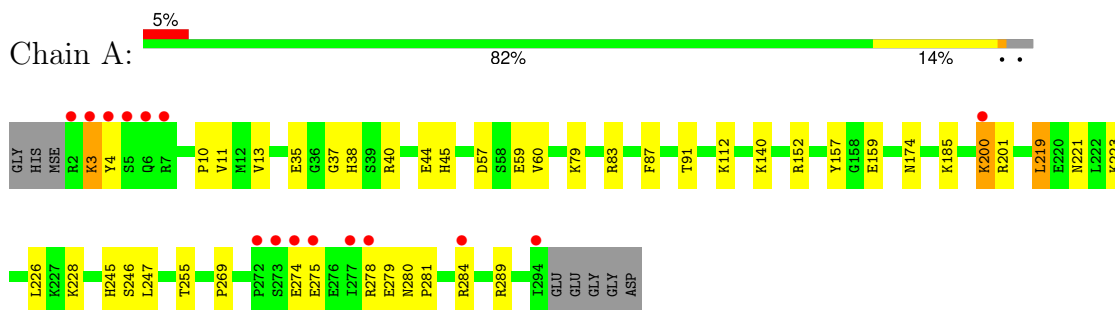
- Molecule 4 is water.

Mol	Chain	Residues	Atoms		ZeroOcc	AltConf
4	A	264	Total	O	0	0
			264	264		
4	B	103	Total	O	0	0
			103	103		

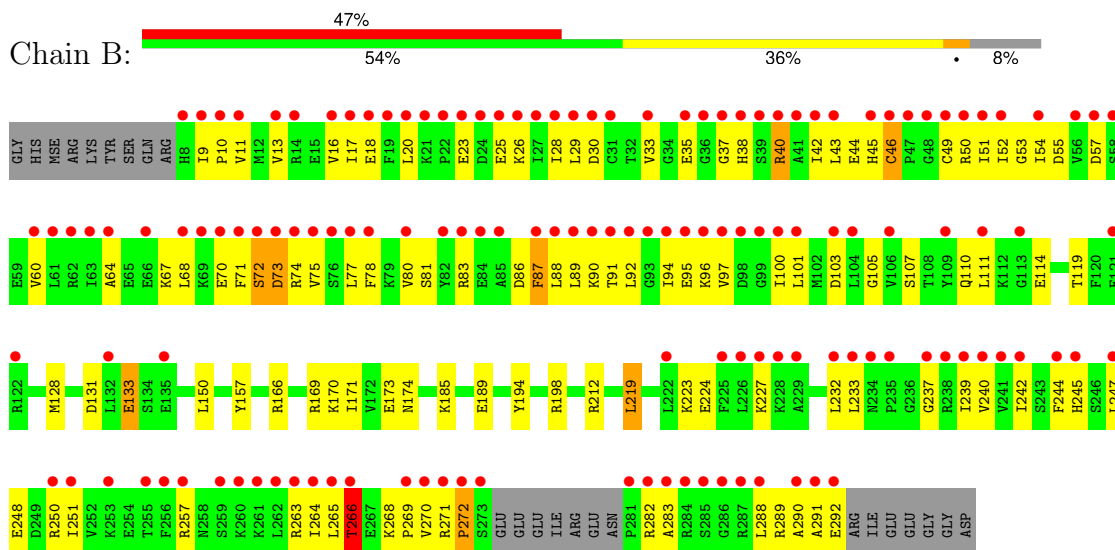
3 Residue-property plots [i](#)

These plots are drawn for all protein, RNA, DNA and oligosaccharide chains in the entry. The first graphic for a chain summarises the proportions of the various outlier classes displayed in the second graphic. The second graphic shows the sequence view annotated by issues in geometry and electron density. Residues are color-coded according to the number of geometric quality criteria for which they contain at least one outlier: green = 0, yellow = 1, orange = 2 and red = 3 or more. A red dot above a residue indicates a poor fit to the electron density ($RSRZ > 2$). Stretches of 2 or more consecutive residues without any outlier are shown as a green connector. Residues present in the sample, but not in the model, are shown in grey.

- Molecule 1: S-adenosyl-methyltransferase mraW



- Molecule 1: S-adenosyl-methyltransferase mraW



4 Data and refinement statistics

Property	Value	Source
Space group	P 21 3	Depositor
Cell constants a, b, c, α , β , γ	133.40Å 133.40Å 133.40Å 90.00° 90.00° 90.00°	Depositor
Resolution (Å)	19.89 – 1.90 19.89 – 1.90	Depositor EDS
% Data completeness (in resolution range)	97.3 (19.89-1.90) 99.8 (19.89-1.90)	Depositor EDS
R_{merge}	0.07	Depositor
R_{sym}	(Not available)	Depositor
$\langle I/\sigma(I) \rangle$ ¹	4.01 (at 1.90Å)	Xtrriage
Refinement program	CNS 1.0	Depositor
R, R_{free}	0.197 , 0.212 0.200 , 0.217	Depositor DCC
R_{free} test set	3136 reflections (5.05%)	wwPDB-VP
Wilson B-factor (Å ²)	23.3	Xtrriage
Anisotropy	0.000	Xtrriage
Bulk solvent k_{sol} (e/Å ³), B_{sol} (Å ²)	0.38 , 51.0	EDS
L-test for twinning ²	$\langle L \rangle = 0.50$, $\langle L^2 \rangle = 0.34$	Xtrriage
Estimated twinning fraction	0.024 for l,-k,h	Xtrriage
F_o, F_c correlation	0.94	EDS
Total number of atoms	5064	wwPDB-VP
Average B, all atoms (Å ²)	37.0	wwPDB-VP

Xtrriage's analysis on translational NCS is as follows: *The largest off-origin peak in the Patterson function is 2.31% of the height of the origin peak. No significant pseudotranslation is detected.*

¹Intensities estimated from amplitudes.

²Theoretical values of $\langle |L| \rangle$, $\langle L^2 \rangle$ for acentric reflections are 0.5, 0.333 respectively for untwinned datasets, and 0.375, 0.2 for perfectly twinned datasets.

5 Model quality [i](#)

5.1 Standard geometry [i](#)

Bond lengths and bond angles in the following residue types are not validated in this section: SAH, SO4

The Z score for a bond length (or angle) is the number of standard deviations the observed value is removed from the expected value. A bond length (or angle) with $|Z| > 5$ is considered an outlier worth inspection. RMSZ is the root-mean-square of all Z scores of the bond lengths (or angles).

Mol	Chain	Bond lengths		Bond angles	
		RMSZ	# Z >5	RMSZ	# Z >5
1	A	0.45	0/2457	0.64	0/3289
1	B	0.36	0/2235	0.60	1/2998 (0.0%)
All	All	0.41	0/4692	0.62	1/6287 (0.0%)

There are no bond length outliers.

All (1) bond angle outliers are listed below:

Mol	Chain	Res	Type	Atoms	Z	Observed(°)	Ideal(°)
1	B	272	PRO	N-CA-CB	5.40	109.78	103.30

There are no chirality outliers.

There are no planarity outliers.

5.2 Too-close contacts [i](#)

In the following table, the Non-H and H(model) columns list the number of non-hydrogen atoms and hydrogen atoms in the chain respectively. The H(added) column lists the number of hydrogen atoms added and optimized by MolProbity. The Clashes column lists the number of clashes within the asymmetric unit, whereas Symm-Clashes lists symmetry-related clashes.

Mol	Chain	Non-H	H(model)	H(added)	Clashes	Symm-Clashes
1	A	2427	0	2503	42	0
1	B	2208	0	2244	127	0
2	A	5	0	0	0	0
2	B	5	0	0	0	0
3	A	26	0	19	2	0
3	B	26	0	19	4	0
4	A	264	0	0	5	0
4	B	103	0	0	4	0

Continued on next page...

Continued from previous page...

Mol	Chain	Non-H	H(model)	H(added)	Clashes	Symm-Clashes
All	All	5064	0	4785	169	0

The all-atom clashscore is defined as the number of clashes found per 1000 atoms (including hydrogen atoms). The all-atom clashscore for this structure is 18.

All (169) close contacts within the same asymmetric unit are listed below, sorted by their clash magnitude.

Atom-1	Atom-2	Interatomic distance (Å)	Clash overlap (Å)
1:B:257:ARG:HA	1:B:264:ILE:HD11	1.46	0.96
1:B:128:MSE:HE1	1:B:212:ARG:HB2	1.47	0.95
1:B:270:VAL:HB	1:B:288:LEU:HB3	1.46	0.92
1:B:11:VAL:HG22	1:B:283:ALA:HB2	1.51	0.91
1:B:128:MSE:CE	1:B:212:ARG:HB2	2.06	0.85
1:B:40:ARG:HG2	1:B:40:ARG:HH21	1.43	0.84
1:B:16:VAL:HG22	1:B:20:LEU:HD12	1.62	0.81
1:B:247:LEU:HD12	1:B:250:ARG:HH12	1.44	0.81
1:A:10:PRO:HB2	1:A:13[B]:VAL:CG1	2.10	0.81
1:B:174:ASN:HD21	1:B:185:LYS:NZ	1.78	0.81
1:B:269:PRO:HG3	1:B:289:ARG:HH12	1.45	0.80
1:B:10:PRO:HB3	1:B:38:HIS:HD2	1.46	0.80
1:B:245:HIS:CD2	1:B:247:LEU:HB3	2.16	0.80
1:B:128:MSE:HE3	4:B:537:HOH:O	1.82	0.79
1:B:70:GLU:HG3	1:B:71:PHE:HD1	1.46	0.79
1:B:10:PRO:HB3	1:B:38:HIS:CD2	2.20	0.77
1:B:174:ASN:HD21	1:B:185:LYS:HZ2	1.31	0.74
1:A:269:PRO:HG3	1:A:289:ARG:NH2	2.03	0.73
1:B:92:LEU:HD12	1:B:94:ILE:HG13	1.69	0.73
1:B:100:ILE:HG13	1:B:233:LEU:HD11	1.72	0.72
1:B:264:ILE:HG22	1:B:266:THR:H	1.54	0.71
1:B:265:LEU:HG	1:B:291:ALA:HA	1.72	0.71
1:B:11:VAL:HG21	1:B:244:PHE:HZ	1.52	0.71
1:B:128:MSE:CE	4:B:537:HOH:O	2.38	0.71
1:B:42:ILE:HB	1:B:51:ILE:HD11	1.73	0.70
1:A:157:TYR:O	1:A:245:HIS:HE1	1.75	0.70
1:B:13:VAL:O	1:B:16:VAL:HG12	1.92	0.70
1:A:201:ARG:HD3	1:A:284:ARG:HH22	1.56	0.69
1:B:70:GLU:HG3	1:B:71:PHE:CD1	2.29	0.67
1:B:240:VAL:HG22	1:B:290:ALA:HB2	1.75	0.67
1:B:16:VAL:O	1:B:20:LEU:HB2	1.94	0.67
1:B:26:LYS:O	1:B:49:CYS:HA	1.96	0.66
1:B:43:LEU:HG	1:B:51:ILE:HD12	1.78	0.66

Continued on next page...

Continued from previous page...

Atom-1	Atom-2	Interatomic distance (Å)	Clash overlap (Å)
1:B:100:ILE:HD12	1:B:233:LEU:HD21	1.76	0.66
1:B:223:LYS:O	1:B:227:LYS:HG3	1.96	0.66
1:A:200:LYS:HE3	1:A:200:LYS:HA	1.79	0.65
1:B:35:GLU:O	1:B:64:ALA:HA	1.96	0.64
1:B:247:LEU:O	1:B:251:ILE:HG13	1.97	0.64
1:B:10:PRO:HG3	1:B:37:GLY:HA3	1.80	0.64
1:A:284:ARG:HB3	1:A:284:ARG:NH2	2.13	0.64
1:A:4:TYR:HB2	1:A:112:LYS:HE2	1.80	0.63
1:B:92:LEU:HD13	1:B:92:LEU:O	1.99	0.62
1:B:71:PHE:HD2	1:B:74:ARG:HH21	1.46	0.62
1:A:4:TYR:O	1:A:112:LYS:HE3	1.99	0.62
1:B:40:ARG:O	1:B:40:ARG:HD3	2.00	0.61
1:B:245:HIS:NE2	1:B:247:LEU:HB3	2.15	0.61
1:B:17:ILE:HG13	1:B:18:GLU:N	2.15	0.61
1:B:29:LEU:HD21	1:B:97:VAL:HG11	1.81	0.61
1:B:242:ILE:HG12	1:B:288:LEU:HD23	1.83	0.61
1:A:3:LYS:HE3	1:A:3:LYS:HA	1.84	0.60
1:B:269:PRO:HG3	1:B:289:ARG:NH1	2.15	0.60
1:B:107:SER:OG	1:B:110:GLN:HG3	2.02	0.60
1:B:11:VAL:HG13	1:B:283:ALA:HB1	1.84	0.60
1:B:57:ASP:HB3	1:B:60:VAL:HG22	1.84	0.60
1:B:269:PRO:CG	1:B:289:ARG:HH12	2.15	0.59
1:B:28:ILE:HB	1:B:51:ILE:HG12	1.83	0.59
1:B:50:ARG:HH21	1:B:52:ILE:HD11	1.68	0.59
1:B:247:LEU:CD1	1:B:250:ARG:HH12	2.14	0.59
1:A:10:PRO:HB2	1:A:13[B]:VAL:HG12	1.84	0.58
1:A:200:LYS:HE3	1:A:200:LYS:CA	2.33	0.58
1:B:83:ARG:HD2	1:B:224:GLU:OE1	2.03	0.58
1:B:87:PHE:O	1:B:91:THR:HG23	2.04	0.58
1:B:11:VAL:HG21	1:B:244:PHE:CZ	2.38	0.57
1:B:111:LEU:HD22	1:B:119:THR:CG2	2.35	0.57
1:B:128:MSE:CE	1:B:212:ARG:CB	2.80	0.57
1:B:288:LEU:HD13	1:B:289:ARG:N	2.20	0.57
1:B:89:LEU:HD21	1:B:97:VAL:HG13	1.88	0.56
1:B:67:LYS:C	1:B:68:LEU:HD12	2.27	0.56
1:A:38:HIS:HD2	3:A:401:SAH:N	2.04	0.55
1:B:240:VAL:HG22	1:B:290:ALA:CB	2.37	0.55
1:A:11:VAL:O	1:A:38:HIS:HE1	1.90	0.55
1:B:40:ARG:HG2	1:B:40:ARG:NH2	2.18	0.55
1:B:11:VAL:HG22	1:B:283:ALA:CB	2.30	0.54
1:B:269:PRO:HG3	1:B:289:ARG:HH22	1.73	0.54

Continued on next page...

Continued from previous page...

Atom-1	Atom-2	Interatomic distance (Å)	Clash overlap (Å)
1:A:245:HIS:CD2	1:A:247:LEU:HB3	2.43	0.54
1:A:40:ARG:O	1:A:44:GLU:HG3	2.08	0.54
1:B:80:VAL:HG11	1:B:88:LEU:HD22	1.90	0.53
1:B:219:LEU:HD11	1:B:251:ILE:HD11	1.90	0.53
1:B:128:MSE:HE2	1:B:212:ARG:CB	2.39	0.53
1:A:278:ARG:HH21	1:A:278:ARG:HG2	1.75	0.52
1:A:59:GLU:HG3	4:A:578:HOH:O	2.08	0.52
1:B:38:HIS:ND1	1:B:101:LEU:HD21	2.24	0.52
1:B:64:ALA:O	1:B:68:LEU:HD13	2.10	0.51
1:B:67:LYS:O	1:B:68:LEU:HD12	2.10	0.51
1:A:174:ASN:HD21	1:A:185:LYS:NZ	2.09	0.51
1:A:40:ARG:NH1	1:A:44:GLU:OE2	2.44	0.51
1:B:100:ILE:HB	1:B:239:ILE:HG13	1.93	0.51
1:B:46:CYS:SG	1:B:46:CYS:O	2.69	0.51
1:A:269:PRO:HG3	1:A:289:ARG:CZ	2.42	0.50
1:A:57:ASP:HB3	1:A:60[A]:VAL:HG22	1.93	0.49
1:B:94:ILE:HG22	1:B:95:GLU:N	2.28	0.49
1:B:38:HIS:O	1:B:42:ILE:HG13	2.12	0.49
1:B:289:ARG:HH11	1:B:289:ARG:HG3	1.77	0.49
1:B:29:LEU:CD1	1:B:97:VAL:HG21	2.43	0.49
1:A:281:PRO:O	1:A:284:ARG:HG3	2.13	0.49
1:B:11:VAL:HG13	1:B:283:ALA:CB	2.41	0.49
1:B:81:SER:C	1:B:83:ARG:H	2.14	0.49
1:B:233:LEU:HD22	1:B:233:LEU:N	2.28	0.49
1:B:50:ARG:NH2	1:B:52:ILE:HD11	2.28	0.48
1:B:185:LYS:O	1:B:189:GLU:HG3	2.14	0.48
1:B:29:LEU:CD2	1:B:97:VAL:HG11	2.43	0.48
1:B:86:ASP:HB2	1:B:90:LYS:NZ	2.29	0.48
1:A:38:HIS:HD2	3:A:401:SAH:HN2	1.59	0.48
1:B:40:ARG:HH21	1:B:40:ARG:CG	2.21	0.48
1:A:284:ARG:HB3	1:A:284:ARG:HH21	1.78	0.48
1:A:79:LYS:HE2	4:A:513:HOH:O	2.14	0.48
1:B:42:ILE:CB	1:B:51:ILE:HD11	2.41	0.48
1:B:20:LEU:HG	1:B:240:VAL:HG21	1.95	0.48
1:B:50:ARG:HG2	1:B:51:ILE:H	1.79	0.48
1:B:131:ASP:OD1	1:B:133:GLU:HB2	2.14	0.47
1:B:288:LEU:HD13	1:B:288:LEU:C	2.34	0.47
1:B:105:GLY:O	3:B:402:SAH:H5'1	2.15	0.47
1:B:194:TYR:CZ	1:B:198:ARG:HB3	2.49	0.47
1:A:159:GLU:OE2	1:A:246:SER:HB2	2.15	0.47
1:B:42:ILE:CG2	1:B:51:ILE:HD11	2.45	0.47

Continued on next page...

Continued from previous page...

Atom-1	Atom-2	Interatomic distance (Å)	Clash overlap (Å)
1:B:53:GLY:O	1:B:77:LEU:HA	2.14	0.47
1:B:51:ILE:O	1:B:75:VAL:HA	2.15	0.47
1:A:274:GLU:HG3	1:A:278:ARG:HH22	1.80	0.47
1:B:54:ILE:HA	1:B:78:PHE:O	2.15	0.47
1:B:170:LYS:HE2	4:B:542:HOH:O	2.15	0.47
1:A:83:ARG:HD2	1:A:221:ASN:HA	1.98	0.46
1:B:264:ILE:HG22	1:B:265:LEU:N	2.31	0.46
1:B:97:VAL:HG22	1:B:232:LEU:O	2.15	0.46
1:B:174:ASN:ND2	1:B:185:LYS:HZ2	2.07	0.46
1:B:242:ILE:HG12	1:B:288:LEU:CD2	2.44	0.46
1:B:245:HIS:HD2	1:B:248:GLU:H	1.64	0.46
1:B:174:ASN:ND2	1:B:185:LYS:NZ	2.56	0.46
1:B:174:ASN:HD21	1:B:185:LYS:HZ1	1.62	0.45
1:A:10:PRO:HB2	1:A:13[B]:VAL:HG13	1.91	0.45
1:A:226:LEU:HB3	1:A:255:THR:HG21	1.99	0.45
1:A:13[B]:VAL:HG22	4:A:714:HOH:O	2.17	0.44
1:A:219:LEU:CD1	1:A:223:LYS:HE2	2.47	0.44
1:B:81:SER:HA	3:B:402:SAH:N1	2.33	0.44
1:B:157:TYR:O	1:B:245:HIS:HE1	2.01	0.44
1:A:10:PRO:HG3	1:A:37:GLY:HA3	1.98	0.44
1:A:87:PHE:O	1:A:91:THR:HG23	2.18	0.44
1:A:200:LYS:HE3	1:A:200:LYS:O	2.17	0.44
1:B:55:ASP:OD2	3:B:402:SAH:H1'	2.17	0.44
1:B:86:ASP:O	1:B:90:LYS:HG3	2.18	0.44
1:B:103:ASP:HB3	3:B:402:SAH:HG1	1.99	0.44
1:B:166:ARG:HD3	4:B:583:HOH:O	2.16	0.44
1:B:20:LEU:HG	1:B:240:VAL:CG2	2.47	0.43
1:A:4:TYR:O	1:A:112:LYS:CE	2.67	0.43
1:B:29:LEU:HG	1:B:97:VAL:HG21	2.00	0.43
1:B:75:VAL:O	1:B:75:VAL:HG13	2.19	0.43
1:B:247:LEU:HA	1:B:250:ARG:NH1	2.34	0.43
1:B:9:ILE:HA	1:B:10:PRO:HD3	1.94	0.43
1:A:174:ASN:HD21	1:A:185:LYS:HZ2	1.67	0.42
1:B:30:ASP:HB3	1:B:33:VAL:HG22	2.01	0.42
1:B:128:MSE:HE2	1:B:212:ARG:HG3	2.01	0.42
1:B:269:PRO:HG3	1:B:289:ARG:NH2	2.35	0.42
1:A:245:HIS:CD2	1:A:247:LEU:H	2.38	0.42
1:B:81:SER:C	1:B:83:ARG:N	2.73	0.42
1:A:278:ARG:HG3	1:A:279:GLU:N	2.35	0.42
1:A:35:GLU:HG3	1:A:60[B]:VAL:CG2	2.50	0.42
1:A:45:HIS:HD2	4:A:687:HOH:O	2.03	0.42

Continued on next page...

Continued from previous page...

Atom-1	Atom-2	Interatomic distance (Å)	Clash overlap (Å)
1:B:72:SER:O	1:B:74:ARG:N	2.52	0.42
1:A:140:LYS:HD2	4:A:712:HOH:O	2.19	0.41
1:B:96:LYS:HE3	1:B:96:LYS:HB2	1.89	0.41
1:B:110:GLN:HA	1:B:114:GLU:HG3	2.01	0.41
1:B:100:ILE:CD1	1:B:233:LEU:HD21	2.45	0.41
1:B:169:ARG:O	1:B:173:GLU:HG3	2.21	0.41
1:B:271:ARG:HH11	1:B:271:ARG:HG3	1.85	0.41
1:B:237:GLY:O	1:B:292:GLU:HA	2.21	0.41
1:B:29:LEU:CG	1:B:97:VAL:HG11	2.51	0.41
1:B:263:ARG:HH11	1:B:263:ARG:HG3	1.84	0.41
1:B:80:VAL:HG22	1:B:81:SER:N	2.36	0.41
1:B:95:GLU:OE1	1:B:95:GLU:HA	2.21	0.41
1:B:150:LEU:HD21	1:B:171:ILE:HG21	2.03	0.40

There are no symmetry-related clashes.

5.3 Torsion angles [i](#)

5.3.1 Protein backbone [i](#)

In the following table, the Percentiles column shows the percent Ramachandran outliers of the chain as a percentile score with respect to all X-ray entries followed by that with respect to entries of similar resolution.

The Analysed column shows the number of residues for which the backbone conformation was analysed, and the total number of residues.

Mol	Chain	Analysed	Favoured	Allowed	Outliers	Percentiles	
1	A	294/301 (98%)	290 (99%)	4 (1%)	0	100	100
1	B	274/301 (91%)	252 (92%)	14 (5%)	8 (3%)	3	0
All	All	568/602 (94%)	542 (95%)	18 (3%)	8 (1%)	9	3

All (8) Ramachandran outliers are listed below:

Mol	Chain	Res	Type
1	B	73	ASP
1	B	272	PRO
1	B	23	GLU
1	B	25	GLU
1	B	282	ARG

Continued on next page...

Continued from previous page...

Mol	Chain	Res	Type
1	B	72	SER
1	B	45	HIS
1	B	266	THR

5.3.2 Protein sidechains [i](#)

In the following table, the Percentiles column shows the percent sidechain outliers of the chain as a percentile score with respect to all X-ray entries followed by that with respect to entries of similar resolution.

The Analysed column shows the number of residues for which the sidechain conformation was analysed, and the total number of residues.

Mol	Chain	Analysed	Rotameric	Outliers	Percentiles	
1	A	266/264 (101%)	259 (97%)	7 (3%)	41	36
1	B	235/264 (89%)	226 (96%)	9 (4%)	28	21
All	All	501/528 (95%)	485 (97%)	16 (3%)	34	27

All (16) residues with a non-rotameric sidechain are listed below:

Mol	Chain	Res	Type
1	A	3	LYS
1	A	152	ARG
1	A	200	LYS
1	A	219	LEU
1	A	228	LYS
1	A	275	GLU
1	A	280	ASN
1	B	40	ARG
1	B	44	GLU
1	B	46	CYS
1	B	73	ASP
1	B	87	PHE
1	B	133	GLU
1	B	219	LEU
1	B	266	THR
1	B	268	LYS

Sometimes sidechains can be flipped to improve hydrogen bonding and reduce clashes. All (8) such sidechains are listed below:

Mol	Chain	Res	Type
1	A	38	HIS
1	A	139	GLN
1	A	174	ASN
1	A	245	HIS
1	A	280	ASN
1	B	38	HIS
1	B	139	GLN
1	B	174	ASN

5.3.3 RNA [i](#)

There are no RNA molecules in this entry.

5.4 Non-standard residues in protein, DNA, RNA chains [i](#)

There are no non-standard protein/DNA/RNA residues in this entry.

5.5 Carbohydrates [i](#)

There are no oligosaccharides in this entry.

5.6 Ligand geometry [i](#)

4 ligands are modelled in this entry.

In the following table, the Counts columns list the number of bonds (or angles) for which Mogul statistics could be retrieved, the number of bonds (or angles) that are observed in the model and the number of bonds (or angles) that are defined in the Chemical Component Dictionary. The Link column lists molecule types, if any, to which the group is linked. The Z score for a bond length (or angle) is the number of standard deviations the observed value is removed from the expected value. A bond length (or angle) with $|Z| > 2$ is considered an outlier worth inspection. RMSZ is the root-mean-square of all Z scores of the bond lengths (or angles).

Mol	Type	Chain	Res	Link	Bond lengths			Bond angles		
					Counts	RMSZ	$\# Z > 2$	Counts	RMSZ	$\# Z > 2$
2	SO4	B	501	-	4,4,4	0.41	0	6,6,6	0.08	0
2	SO4	A	500	-	4,4,4	0.34	0	6,6,6	0.10	0
3	SAH	A	401	-	23,28,28	0.72	0	22,40,40	0.84	2 (9%)
3	SAH	B	402	-	23,28,28	0.68	0	22,40,40	0.84	1 (4%)

In the following table, the Chirals column lists the number of chiral outliers, the number of chiral

centers analysed, the number of these observed in the model and the number defined in the Chemical Component Dictionary. Similar counts are reported in the Torsion and Rings columns. '-' means no outliers of that kind were identified.

Mol	Type	Chain	Res	Link	Chirals	Torsions	Rings
3	SAH	B	402	-	-	1/11/31/31	0/3/3/3
3	SAH	A	401	-	-	0/11/31/31	0/3/3/3

There are no bond length outliers.

All (3) bond angle outliers are listed below:

Mol	Chain	Res	Type	Atoms	Z	Observed(°)	Ideal(°)
3	B	402	SAH	C5-C6-N6	2.38	123.93	120.31
3	A	401	SAH	C4'-O4'-C1'	-2.06	108.04	109.92
3	A	401	SAH	C5-C6-N6	2.04	123.41	120.31

There are no chirality outliers.

All (1) torsion outliers are listed below:

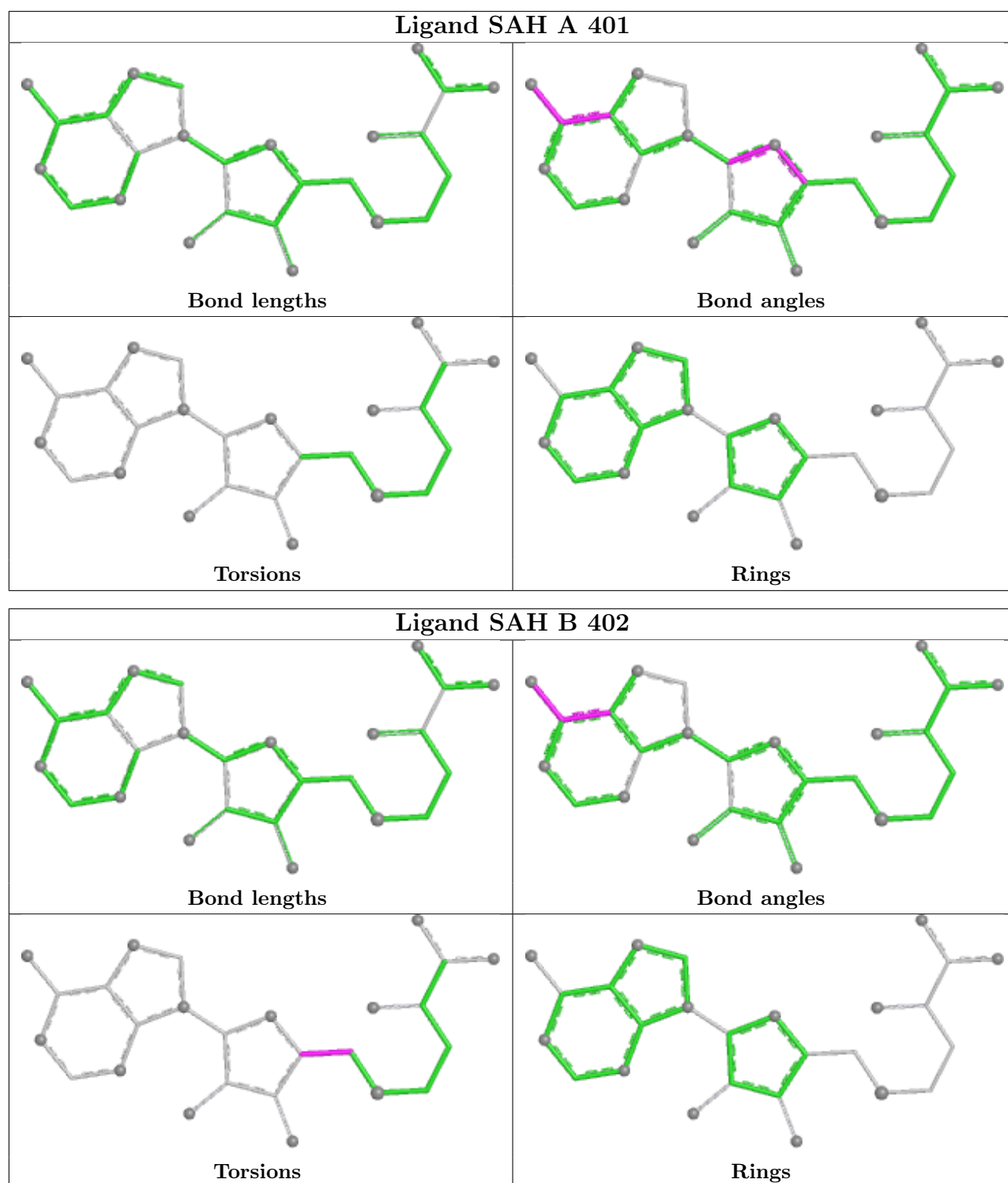
Mol	Chain	Res	Type	Atoms
3	B	402	SAH	O4'-C4'-C5'-SD

There are no ring outliers.

2 monomers are involved in 6 short contacts:

Mol	Chain	Res	Type	Clashes	Symm-Clashes
3	A	401	SAH	2	0
3	B	402	SAH	4	0

The following is a two-dimensional graphical depiction of Mogul quality analysis of bond lengths, bond angles, torsion angles, and ring geometry for all instances of the Ligand of Interest. In addition, ligands with molecular weight > 250 and outliers as shown on the validation Tables will also be included. For torsion angles, if less than 5% of the Mogul distribution of torsion angles is within 10 degrees of the torsion angle in question, then that torsion angle is considered an outlier. Any bond that is central to one or more torsion angles identified as an outlier by Mogul will be highlighted in the graph. For rings, the root-mean-square deviation (RMSD) between the ring in question and similar rings identified by Mogul is calculated over all ring torsion angles. If the average RMSD is greater than 60 degrees and the minimal RMSD between the ring in question and any Mogul-identified rings is also greater than 60 degrees, then that ring is considered an outlier. The outliers are highlighted in purple. The color gray indicates Mogul did not find sufficient equivalents in the CSD to analyse the geometry.



5.7 Other polymers [\(i\)](#)

There are no such residues in this entry.

5.8 Polymer linkage issues

There are no chain breaks in this entry.

6 Fit of model and data

6.1 Protein, DNA and RNA chains

In the following table, the column labelled ‘#RSRZ > 2’ contains the number (and percentage) of RSRZ outliers, followed by percent RSRZ outliers for the chain as percentile scores relative to all X-ray entries and entries of similar resolution. The OWAB column contains the minimum, median, 95th percentile and maximum values of the occupancy-weighted average B-factor per residue. The column labelled ‘Q < 0.9’ lists the number of (and percentage) of residues with an average occupancy less than 0.9.

Mol	Chain	Analysed	<RSRZ>	#RSRZ>2	OWAB(Å ²)	Q<0.9
1	A	289/301 (96%)	-0.10	15 (5%) 34 35	6, 21, 43, 58	3 (1%)
1	B	274/301 (91%)	1.92	140 (51%) 0 0	13, 64, 76, 79	0
All	All	563/602 (93%)	0.89	155 (27%) 2 1	6, 28, 75, 79	3 (0%)

All (155) RSRZ outliers are listed below:

Mol	Chain	Res	Type	RSRZ
1	B	42	ILE	7.4
1	B	27	ILE	6.8
1	B	29	LEU	6.7
1	B	49	CYS	6.7
1	B	262	LEU	5.9
1	B	71	PHE	5.8
1	B	20	LEU	5.6
1	B	47	PRO	5.5
1	B	73	ASP	5.3
1	B	23	GLU	5.2
1	B	283	ALA	5.2
1	B	41	ALA	5.2
1	B	94	ILE	5.1
1	B	9	ILE	4.9
1	B	24	ASP	4.8
1	A	284	ARG	4.7
1	B	78	PHE	4.7
1	B	68	LEU	4.7
1	B	50	ARG	4.7
1	B	11	VAL	4.6
1	B	87	PHE	4.6
1	B	235	PRO	4.6
1	B	61	LEU	4.6
1	A	277	ILE	4.6

Continued on next page...

Continued from previous page...

Mol	Chain	Res	Type	RSRZ
1	B	17	ILE	4.6
1	B	111	LEU	4.5
1	B	233	LEU	4.5
1	B	48	GLY	4.5
1	B	265	LEU	4.5
1	B	272	PRO	4.4
1	B	97	VAL	4.4
1	B	286	GLY	4.3
1	B	241	VAL	4.3
1	B	46	CYS	4.1
1	B	51	ILE	4.1
1	B	76	SER	4.1
1	B	229	ALA	4.1
1	B	281	PRO	4.0
1	B	273	SER	4.0
1	B	269	PRO	4.0
1	B	52	ILE	4.0
1	B	75	VAL	4.0
1	B	19	PHE	4.0
1	B	26	LYS	3.9
1	B	91	THR	3.9
1	B	89	LEU	3.9
1	A	3	LYS	3.9
1	A	278	ARG	3.9
1	B	292	GLU	3.9
1	B	92	LEU	3.8
1	A	294	ILE	3.8
1	B	8	HIS	3.8
1	B	69	LYS	3.8
1	B	16	VAL	3.7
1	B	33	VAL	3.7
1	B	95	GLU	3.6
1	B	72	SER	3.6
1	B	40	ARG	3.5
1	B	43	LEU	3.5
1	B	101	LEU	3.4
1	B	13	VAL	3.4
1	B	261	LYS	3.4
1	B	237	GLY	3.4
1	B	291	ALA	3.3
1	B	104	LEU	3.3
1	B	37	GLY	3.3

Continued on next page...

Continued from previous page...

Mol	Chain	Res	Type	RSRZ
1	A	6	GLN	3.3
1	B	28	ILE	3.3
1	B	113	GLY	3.3
1	B	238	ARG	3.3
1	B	56	VAL	3.2
1	B	266	THR	3.2
1	B	99	GLY	3.2
1	B	225	PHE	3.2
1	B	25	GLU	3.2
1	B	264	ILE	3.2
1	B	284	ARG	3.2
1	B	38	HIS	3.2
1	B	80	VAL	3.2
1	B	226	LEU	3.2
1	A	7	ARG	3.2
1	B	256	PHE	3.2
1	B	263	ARG	3.1
1	B	63	ILE	3.1
1	B	62	ARG	3.1
1	B	106	VAL	3.1
1	B	132	LEU	3.1
1	B	10	PRO	3.0
1	A	2	ARG	3.0
1	B	242	ILE	3.0
1	B	85	ALA	3.0
1	B	240	VAL	3.0
1	B	74	ARG	3.0
1	B	98	ASP	3.0
1	B	36	GLY	3.0
1	B	288	LEU	3.0
1	B	257	ARG	3.0
1	B	244	PHE	3.0
1	B	90	LYS	2.9
1	B	58	SER	2.9
1	B	14	ARG	2.9
1	A	273	SER	2.8
1	B	290	ALA	2.8
1	B	22	PRO	2.8
1	A	274	GLU	2.8
1	B	35	GLU	2.8
1	B	39	SER	2.8
1	B	222	LEU	2.7

Continued on next page...

Continued from previous page...

Mol	Chain	Res	Type	RSRZ
1	B	270	VAL	2.7
1	B	228	LYS	2.7
1	B	84	GLU	2.7
1	B	234	ASN	2.7
1	B	100	ILE	2.7
1	B	45	HIS	2.7
1	A	275	GLU	2.6
1	B	227	LYS	2.6
1	B	88	LEU	2.6
1	A	200	LYS	2.6
1	B	260	LYS	2.6
1	B	77	LEU	2.6
1	B	21	LYS	2.6
1	B	287	ARG	2.6
1	B	255	THR	2.6
1	B	259	SER	2.5
1	B	96	LYS	2.5
1	B	66	GLU	2.5
1	B	70	GLU	2.5
1	B	135	GLU	2.5
1	B	60	VAL	2.5
1	B	54	ILE	2.5
1	B	93	GLY	2.5
1	B	239	ILE	2.4
1	B	83	ARG	2.4
1	B	57	ASP	2.4
1	B	271	ARG	2.3
1	B	232	LEU	2.3
1	B	18	GLU	2.3
1	A	4	TYR	2.3
1	B	82	TYR	2.3
1	B	245	HIS	2.3
1	B	103	ASP	2.3
1	B	30	ASP	2.3
1	B	250	ARG	2.2
1	B	64	ALA	2.2
1	B	251	ILE	2.2
1	B	253	LYS	2.2
1	B	282	ARG	2.2
1	B	31	CYS	2.2
1	B	109	TYR	2.2
1	A	5	SER	2.1

Continued on next page...

Continued from previous page...

Mol	Chain	Res	Type	RSRZ
1	B	247	LEU	2.1
1	A	272	PRO	2.1
1	B	122	ARG	2.1
1	B	285	SER	2.1
1	B	121	GLU	2.1

6.2 Non-standard residues in protein, DNA, RNA chains [i](#)

There are no non-standard protein/DNA/RNA residues in this entry.

6.3 Carbohydrates [i](#)

There are no monosaccharides in this entry.

6.4 Ligands [i](#)

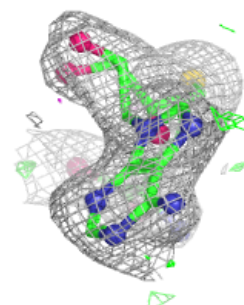
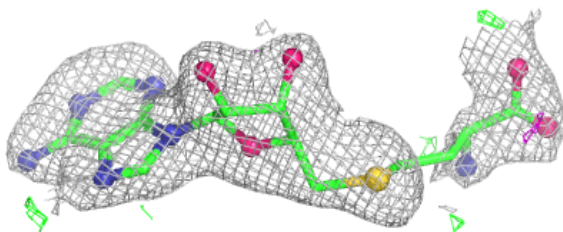
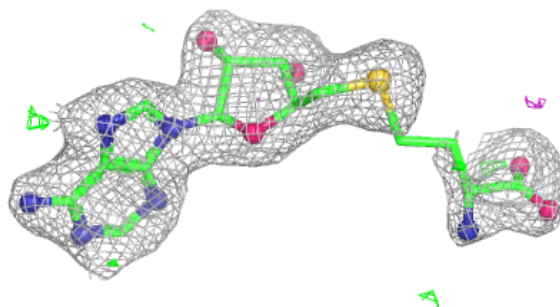
In the following table, the Atoms column lists the number of modelled atoms in the group and the number defined in the chemical component dictionary. The B-factors column lists the minimum, median, 95th percentile and maximum values of B factors of atoms in the group. The column labelled 'Q< 0.9' lists the number of atoms with occupancy less than 0.9.

Mol	Type	Chain	Res	Atoms	RSCC	RSR	B-factors(\AA^2)	Q<0.9
3	SAH	B	402	26/26	0.85	0.13	45,49,55,56	0
2	SO4	A	500	5/5	0.94	0.09	45,45,46,47	0
2	SO4	B	501	5/5	0.95	0.10	40,42,43,43	0
3	SAH	A	401	26/26	0.98	0.05	10,14,18,21	0

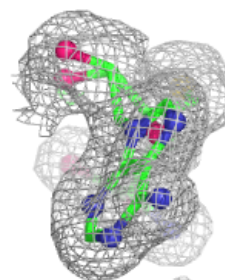
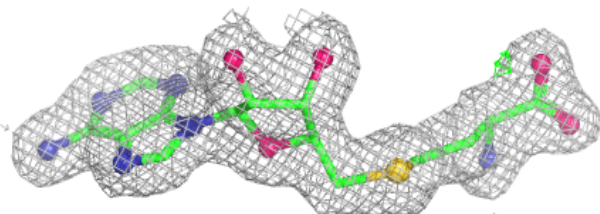
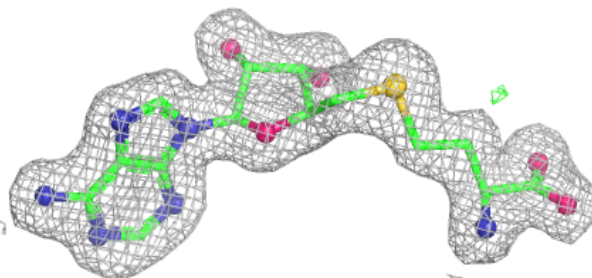
The following is a graphical depiction of the model fit to experimental electron density of all instances of the Ligand of Interest. In addition, ligands with molecular weight > 250 and outliers as shown on the geometry validation Tables will also be included. Each fit is shown from different orientation to approximate a three-dimensional view.

Electron density around SAH B 402:

$2mF_o-DF_c$ (at 0.7 rmsd) in gray
 mF_o-DF_c (at 3 rmsd) in purple (negative)
and green (positive)

**Electron density around SAH A 401:**

$2mF_o-DF_c$ (at 0.7 rmsd) in gray
 mF_o-DF_c (at 3 rmsd) in purple (negative)
and green (positive)



6.5 Other polymers [i](#)

There are no such residues in this entry.