



Full wwPDB X-ray Structure Validation Report ⓘ

Aug 9, 2020 – 03:45 PM BST

PDB ID : 3M7P
Title : Fibronectin fragment
Authors : Graille, M.; Pagano, M.; Rose, T.; Reboud Ravaux, M.; van Tilbeurgh, H.
Deposited on : 2010-03-17
Resolution : 2.50 Å(reported)

This is a Full wwPDB X-ray Structure Validation Report for a publicly released PDB entry.

We welcome your comments at validation@mail.wwpdb.org

A user guide is available at

<https://www.wwpdb.org/validation/2017/XrayValidationReportHelp>

with specific help available everywhere you see the ⓘ symbol.

The following versions of software and data (see [references ⓘ](#)) were used in the production of this report:

MolProbity : 4.02b-467
Mogul : 1.8.5 (274361), CSD as541be (2020)
Xtriage (Phenix) : 1.13
EDS : 2.13.1
buster-report : 1.1.7 (2018)
Percentile statistics : 20191225.v01 (using entries in the PDB archive December 25th 2019)
Refmac : 5.8.0158
CCP4 : 7.0.044 (Gargrove)
Ideal geometry (proteins) : Engh & Huber (2001)
Ideal geometry (DNA, RNA) : Parkinson et al. (1996)
Validation Pipeline (wwPDB-VP) : 2.13.1

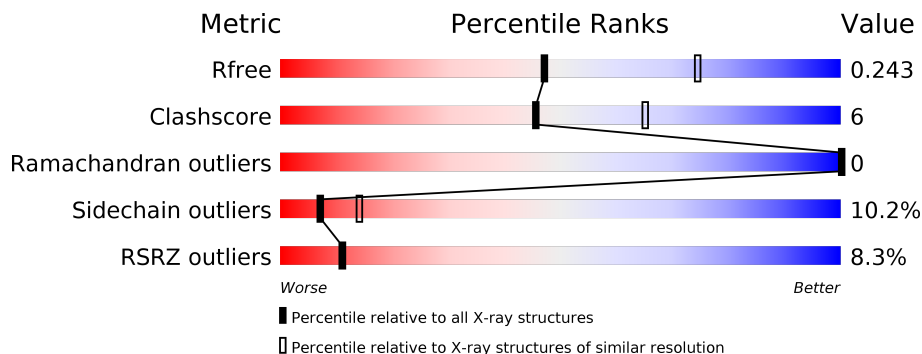
1 Overall quality at a glance

The following experimental techniques were used to determine the structure:

X-RAY DIFFRACTION

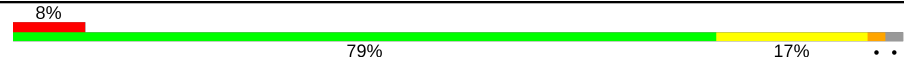
The reported resolution of this entry is 2.50 Å.

Percentile scores (ranging between 0-100) for global validation metrics of the entry are shown in the following graphic. The table shows the number of entries on which the scores are based.



Metric	Whole archive (#Entries)	Similar resolution (#Entries, resolution range(Å))
R_{free}	130704	4661 (2.50-2.50)
Clashscore	141614	5346 (2.50-2.50)
Ramachandran outliers	138981	5231 (2.50-2.50)
Sidechain outliers	138945	5233 (2.50-2.50)
RSRZ outliers	127900	4559 (2.50-2.50)

The table below summarises the geometric issues observed across the polymeric chains and their fit to the electron density. The red, orange, yellow and green segments on the lower bar indicate the fraction of residues that contain outliers for ≥ 3 , 2, 1 and 0 types of geometric quality criteria respectively. A grey segment represents the fraction of residues that are not modelled. The numeric value for each fraction is indicated below the corresponding segment, with a dot representing fractions $\leq 5\%$. The upper red bar (where present) indicates the fraction of residues that have poor fit to the electron density. The numeric value is given above the bar.

Mol	Chain	Length	Quality of chain
1	A	308	

The following table lists non-polymeric compounds, carbohydrate monomers and non-standard residues in protein, DNA, RNA chains that are outliers for geometric or electron-density-fit criteria:

Mol	Type	Chain	Res	Chirality	Geometry	Clashes	Electron density
2	NAG	A	1528	-	-	-	X
4	12P	A	189	-	X	-	-

Continued on next page...

Continued from previous page...

Mol	Type	Chain	Res	Chirality	Geometry	Clashes	Electron density
4	12P	A	190	-	X	-	-

2 Entry composition [i](#)

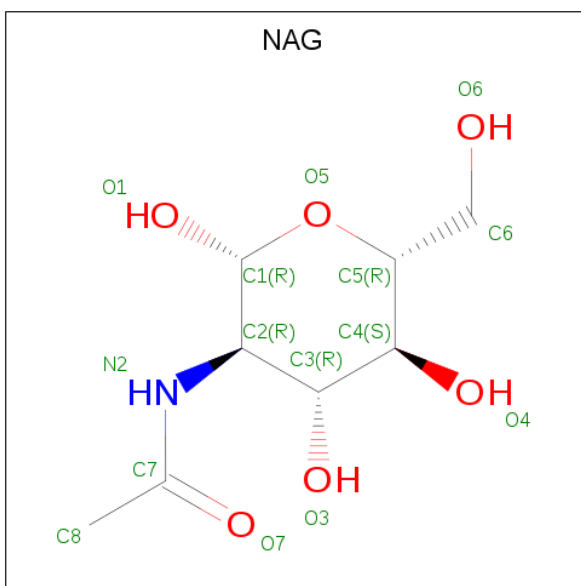
There are 5 unique types of molecules in this entry. The entry contains 2530 atoms, of which 0 are hydrogens and 0 are deuteriums.

In the tables below, the ZeroOcc column contains the number of atoms modelled with zero occupancy, the AltConf column contains the number of residues with at least one atom in alternate conformation and the Trace column contains the number of residues modelled with at most 2 atoms.

- Molecule 1 is a protein called FN1 protein.

Mol	Chain	Residues	Atoms					ZeroOcc	AltConf	Trace
			Total	C	N	O	S			
1	A	301	2393	1469	423	468	33	0	0	0

- Molecule 2 is 2-acetamido-2-deoxy-beta-D-glucopyranose (three-letter code: NAG) (formula: $C_8H_{15}NO_6$).

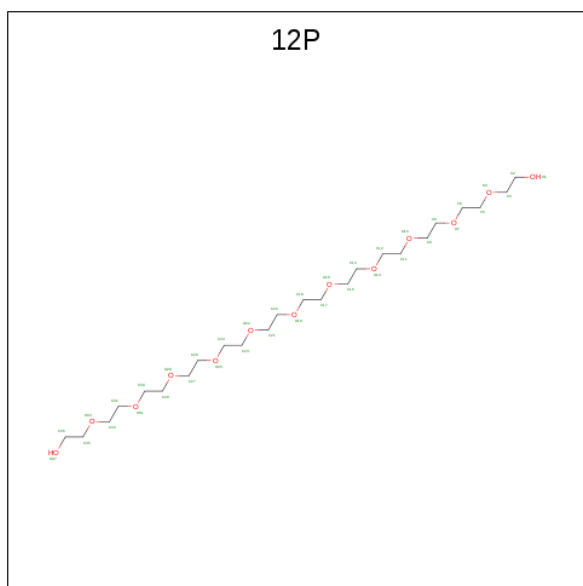


Mol	Chain	Residues	Atoms				ZeroOcc	AltConf
			Total	C	N	O		
2	A	1	14	8	1	5	0	0
2	A	1	14	8	1	5	0	0
2	A	1	14	8	1	5	0	0

- Molecule 3 is ZINC ION (three-letter code: ZN) (formula: Zn).

Mol	Chain	Residues	Atoms		ZeroOcc	AltConf
3	A	7	Total	Zn	0	0
			7	7		

- Molecule 4 is DODECAETHYLENE GLYCOL (three-letter code: 12P) (formula: $C_{24}H_{50}O_{13}$).



Mol	Chain	Residues	Atoms			ZeroOcc	AltConf
4	A	1	Total	C	O	0	0
			16	11	5		
4	A	1	Total	C	O	0	0
			10	7	3		

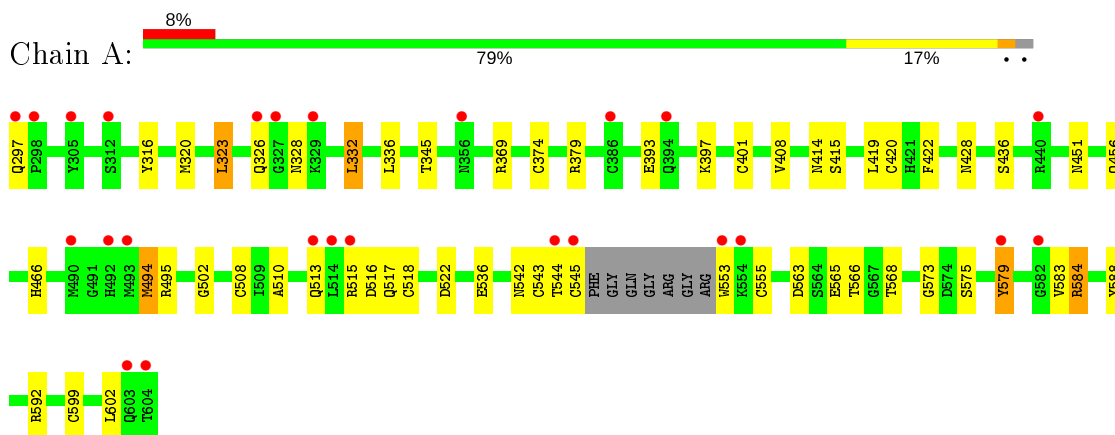
- Molecule 5 is water.

Mol	Chain	Residues	Atoms		ZeroOcc	AltConf
5	A	62	Total	O	0	0
			62	62		

3 Residue-property plots [i](#)

These plots are drawn for all protein, RNA, DNA and oligosaccharide chains in the entry. The first graphic for a chain summarises the proportions of the various outlier classes displayed in the second graphic. The second graphic shows the sequence view annotated by issues in geometry and electron density. Residues are color-coded according to the number of geometric quality criteria for which they contain at least one outlier: green = 0, yellow = 1, orange = 2 and red = 3 or more. A red dot above a residue indicates a poor fit to the electron density ($RSRZ > 2$). Stretches of 2 or more consecutive residues without any outlier are shown as a green connector. Residues present in the sample, but not in the model, are shown in grey.

- Molecule 1: FN1 protein



4 Data and refinement statistics

Property	Value	Source
Space group	P 32 2 1	Depositor
Cell constants a, b, c, α , β , γ	124.79 Å 124.79 Å 60.65 Å 90.00° 90.00° 120.00°	Depositor
Resolution (Å)	19.87 – 2.50 19.87 – 2.50	Depositor EDS
% Data completeness (in resolution range)	(Not available) (19.87-2.50) 97.0 (19.87-2.50)	Depositor EDS
R_{merge}	0.08	Depositor
R_{sym}	0.08	Depositor
$\langle I/\sigma(I) \rangle$ ¹	1.68 (at 2.50 Å)	Xtrriage
Refinement program	BUSTER 2.8.0	Depositor
R, R_{free}	0.194 , 0.219 0.211 , 0.243	Depositor DCC
R_{free} test set	956 reflections (5.17%)	wwPDB-VP
Wilson B-factor (Å ²)	51.7	Xtrriage
Anisotropy	0.156	Xtrriage
Bulk solvent k_{sol} (e/Å ³), B_{sol} (Å ²)	0.34 , 66.0	EDS
L-test for twinning ²	$\langle L \rangle = 0.49$, $\langle L^2 \rangle = 0.32$	Xtrriage
Estimated twinning fraction	0.038 for -h,-k,l	Xtrriage
F_o, F_c correlation	0.94	EDS
Total number of atoms	2530	wwPDB-VP
Average B, all atoms (Å ²)	59.0	wwPDB-VP

Xtrriage's analysis on translational NCS is as follows: *The largest off-origin peak in the Patterson function is 4.78% of the height of the origin peak. No significant pseudotranslation is detected.*

¹ Intensities estimated from amplitudes.

² Theoretical values of $\langle |L| \rangle$, $\langle L^2 \rangle$ for acentric reflections are 0.5, 0.333 respectively for untwinned datasets, and 0.375, 0.2 for perfectly twinned datasets.

5 Model quality [i](#)

5.1 Standard geometry [i](#)

Bond lengths and bond angles in the following residue types are not validated in this section: 12P, ZN, NAG

The Z score for a bond length (or angle) is the number of standard deviations the observed value is removed from the expected value. A bond length (or angle) with $|Z| > 5$ is considered an outlier worth inspection. RMSZ is the root-mean-square of all Z scores of the bond lengths (or angles).

Mol	Chain	Bond lengths		Bond angles	
		RMSZ	# $ Z > 5$	RMSZ	# $ Z > 5$
1	A	0.51	0/2459	0.76	1/3337 (0.0%)

There are no bond length outliers.

All (1) bond angle outliers are listed below:

Mol	Chain	Res	Type	Atoms	Z	Observed($^{\circ}$)	Ideal($^{\circ}$)
1	A	415	SER	N-CA-C	5.38	125.54	111.00

There are no chirality outliers.

There are no planarity outliers.

5.2 Too-close contacts [i](#)

In the following table, the Non-H and H(model) columns list the number of non-hydrogen atoms and hydrogen atoms in the chain respectively. The H(added) column lists the number of hydrogen atoms added and optimized by MolProbity. The Clashes column lists the number of clashes within the asymmetric unit, whereas Symm-Clashes lists symmetry related clashes.

Mol	Chain	Non-H	H(model)	H(added)	Clashes	Symm-Clashes
1	A	2393	0	2139	22	0
2	A	42	0	39	2	0
3	A	7	0	0	0	0
4	A	26	0	26	2	0
5	A	62	0	0	0	0
All	All	2530	0	2204	25	0

The all-atom clashscore is defined as the number of clashes found per 1000 atoms (including hydrogen atoms). The all-atom clashscore for this structure is 6.

All (25) close contacts within the same asymmetric unit are listed below, sorted by their clash magnitude.

Atom-1	Atom-2	Interatomic distance (Å)	Clash overlap (Å)
4:A:189:12P:C24	4:A:189:12P:O25	1.75	1.32
2:A:1542:NAG:H3	2:A:1542:NAG:O7	1.87	0.74
1:A:584:ARG:HD3	1:A:584:ARG:H	1.54	0.73
2:A:1542:NAG:C3	2:A:1542:NAG:O7	2.36	0.73
1:A:517:GLN:OE1	1:A:542:ASN:OD1	2.15	0.65
1:A:543:CYS:HG	1:A:555:CYS:HG	0.97	0.60
1:A:379:ARG:HH11	4:A:189:12P:H232	1.66	0.60
1:A:316:TYR:HD2	1:A:320:MET:CE	2.21	0.54
1:A:518:CYS:SG	1:A:545:CYS:SG	3.09	0.51
1:A:508:CYS:O	1:A:522:ASP:HA	2.12	0.49
1:A:414:ASN:ND2	1:A:456:GLN:O	2.45	0.48
1:A:316:TYR:HD2	1:A:320:MET:HE2	1.79	0.47
1:A:332:LEU:HB2	1:A:345:THR:HA	1.97	0.46
1:A:584:ARG:HD3	1:A:584:ARG:N	2.28	0.46
1:A:323:LEU:HD13	1:A:419:LEU:HD11	1.98	0.46
1:A:579:TYR:CZ	1:A:584:ARG:HG3	2.52	0.45
1:A:420:CYS:HB3	1:A:422:PHE:CZ	2.52	0.44
1:A:494:MET:HG3	1:A:510:ALA:HB2	1.99	0.44
1:A:543:CYS:HB3	1:A:553:TRP:HB3	1.99	0.43
1:A:573:GLY:HA2	1:A:588:TYR:OH	2.19	0.43
1:A:536:GLU:HB3	1:A:599:CYS:HB2	2.01	0.43
1:A:563:ASP:HB3	1:A:566:THR:OG1	2.19	0.42
1:A:466:HIS:HB2	1:A:502:GLY:HA2	2.02	0.42
1:A:374:CYS:CB	1:A:401:CYS:SG	3.07	0.41
1:A:579:TYR:CE2	1:A:584:ARG:HG3	2.55	0.41

There are no symmetry-related clashes.

5.3 Torsion angles [i](#)

5.3.1 Protein backbone [i](#)

In the following table, the Percentiles column shows the percent Ramachandran outliers of the chain as a percentile score with respect to all X-ray entries followed by that with respect to entries of similar resolution.

The Analysed column shows the number of residues for which the backbone conformation was analysed, and the total number of residues.

Mol	Chain	Analysed	Favoured	Allowed	Outliers	Percentiles	
1	A	297/308 (96%)	284 (96%)	13 (4%)	0	100	100

There are no Ramachandran outliers to report.

5.3.2 Protein sidechains [i](#)

In the following table, the Percentiles column shows the percent sidechain outliers of the chain as a percentile score with respect to all X-ray entries followed by that with respect to entries of similar resolution.

The Analysed column shows the number of residues for which the sidechain conformation was analysed, and the total number of residues.

Mol	Chain	Analysed	Rotameric	Outliers	Percentiles	
1	A	264/268 (98%)	237 (90%)	27 (10%)	7	14

All (27) residues with a non-rotameric sidechain are listed below:

Mol	Chain	Res	Type
1	A	297	GLN
1	A	323	LEU
1	A	326	GLN
1	A	328	ASN
1	A	332	LEU
1	A	336	LEU
1	A	369	ARG
1	A	393	GLU
1	A	397	LYS
1	A	408	VAL
1	A	428	ASN
1	A	436	SER
1	A	451	ASN
1	A	494	MET
1	A	495	ARG
1	A	513	GLN
1	A	515	ARG
1	A	516	ASP
1	A	544	THR
1	A	565	GLU
1	A	568	THR
1	A	575	SER
1	A	579	TYR

Continued on next page...

Continued from previous page...

Mol	Chain	Res	Type
1	A	583	VAL
1	A	584	ARG
1	A	592	ARG
1	A	602	LEU

Some sidechains can be flipped to improve hydrogen bonding and reduce clashes. All (3) such sidechains are listed below:

Mol	Chain	Res	Type
1	A	451	ASN
1	A	562	GLN
1	A	600	GLN

5.3.3 RNA [i](#)

There are no RNA molecules in this entry.

5.4 Non-standard residues in protein, DNA, RNA chains [i](#)

There are no non-standard protein/DNA/RNA residues in this entry.

5.5 Carbohydrates [i](#)

There are no monosaccharides in this entry.

5.6 Ligand geometry [i](#)

Of 12 ligands modelled in this entry, 7 are monoatomic - leaving 5 for Mogul analysis.

In the following table, the Counts columns list the number of bonds (or angles) for which Mogul statistics could be retrieved, the number of bonds (or angles) that are observed in the model and the number of bonds (or angles) that are defined in the Chemical Component Dictionary. The Link column lists molecule types, if any, to which the group is linked. The Z score for a bond length (or angle) is the number of standard deviations the observed value is removed from the expected value. A bond length (or angle) with $|Z| > 2$ is considered an outlier worth inspection. RMSZ is the root-mean-square of all Z scores of the bond lengths (or angles).

Mol	Type	Chain	Res	Link	Bond lengths			Bond angles		
					Counts	RMSZ	$\# Z > 2$	Counts	RMSZ	$\# Z > 2$
2	NAG	A	1430	1	14,14,15	0.90	1 (7%)	17,19,21	1.99	3 (17%)

Mol	Type	Chain	Res	Link	Bond lengths			Bond angles		
					Counts	RMSZ	# Z > 2	Counts	RMSZ	# Z > 2
4	12P	A	189	-	15,15,36	3.11	6 (40%)	14,14,35	4.63	14 (100%)
4	12P	A	190	-	9,9,36	1.67	2 (22%)	8,8,35	3.56	5 (62%)
2	NAG	A	1542	1	14,14,15	0.88	1 (7%)	17,19,21	1.99	3 (17%)
2	NAG	A	1528	1	14,14,15	0.90	1 (7%)	17,19,21	1.99	3 (17%)

In the following table, the Chirals column lists the number of chiral outliers, the number of chiral centers analysed, the number of these observed in the model and the number defined in the Chemical Component Dictionary. Similar counts are reported in the Torsion and Rings columns. '-' means no outliers of that kind were identified.

Mol	Type	Chain	Res	Link	Chirals	Torsions	Rings
2	NAG	A	1430	1	-	5/6/23/26	0/1/1/1
4	12P	A	189	-	-	6/13/13/34	-
4	12P	A	190	-	-	6/7/7/34	-
2	NAG	A	1542	1	-	5/6/23/26	0/1/1/1
2	NAG	A	1528	1	-	4/6/23/26	0/1/1/1

All (11) bond length outliers are listed below:

Mol	Chain	Res	Type	Atoms	Z	Observed(Å)	Ideal(Å)
4	A	189	12P	O25-C24	7.65	1.75	1.42
4	A	189	12P	C26-C27	4.90	1.74	1.49
4	A	189	12P	O25-C26	4.85	1.63	1.42
4	A	189	12P	C23-C24	-3.41	1.31	1.49
4	A	189	12P	O28-C27	3.03	1.55	1.42
4	A	190	12P	O25-C26	3.02	1.55	1.42
4	A	190	12P	O31-C32	2.99	1.57	1.42
4	A	189	12P	O34-C33	2.84	1.54	1.42
2	A	1528	NAG	C8-C7	2.43	1.55	1.50
2	A	1430	NAG	C8-C7	2.38	1.55	1.50
2	A	1542	NAG	C8-C7	2.35	1.55	1.50

All (28) bond angle outliers are listed below:

Mol	Chain	Res	Type	Atoms	Z	Observed(°)	Ideal(°)
4	A	189	12P	C24-O25-C26	9.46	154.27	113.29
4	A	190	12P	C24-O25-C26	7.62	140.20	112.90
4	A	189	12P	O25-C24-C23	5.78	136.44	110.39
4	A	189	12P	O25-C26-C27	5.75	136.32	110.39
4	A	189	12P	C35-O34-C33	5.63	133.06	112.90

Continued on next page...

Continued from previous page...

Mol	Chain	Res	Type	Atoms	Z	Observed(°)	Ideal(°)
2	A	1542	NAG	C6-C5-C4	-5.26	100.69	113.00
2	A	1528	NAG	C6-C5-C4	-5.26	100.69	113.00
2	A	1430	NAG	C6-C5-C4	-5.22	100.77	113.00
4	A	189	12P	C27-O28-C29	-5.10	91.18	113.29
4	A	189	12P	O28-C27-C26	4.63	131.28	110.39
2	A	1430	NAG	C1-O5-C5	4.08	117.72	112.19
2	A	1528	NAG	C1-O5-C5	4.07	117.70	112.19
2	A	1542	NAG	C1-O5-C5	4.04	117.67	112.19
4	A	189	12P	O28-C29-C30	3.39	125.68	110.39
4	A	189	12P	O31-C30-C29	3.39	125.68	110.39
4	A	190	12P	O28-C29-C30	3.36	125.56	110.39
4	A	190	12P	O28-C27-C26	3.25	125.06	110.39
4	A	190	12P	C32-O31-C30	-3.07	93.89	112.96
4	A	189	12P	O34-C33-C32	-2.99	96.92	110.39
2	A	1430	NAG	O5-C1-C2	-2.95	106.62	111.29
2	A	1542	NAG	O5-C1-C2	-2.94	106.65	111.29
2	A	1528	NAG	O5-C1-C2	-2.94	106.65	111.29
4	A	189	12P	O22-C23-C24	-2.93	88.76	111.07
4	A	189	12P	C21-O22-C23	2.75	130.04	112.96
4	A	189	12P	O31-C32-C33	2.63	122.24	110.39
4	A	190	12P	O25-C24-C23	2.40	137.14	112.05
4	A	189	12P	O34-C35-C36	2.25	135.53	112.05
4	A	189	12P	C30-O31-C32	2.22	122.92	113.29

There are no chirality outliers.

All (26) torsion outliers are listed below:

Mol	Chain	Res	Type	Atoms
2	A	1430	NAG	C3-C2-N2-C7
2	A	1542	NAG	C3-C2-N2-C7
4	A	190	12P	O25-C26-C27-O28
4	A	189	12P	O28-C29-C30-O31
2	A	1430	NAG	C4-C5-C6-O6
2	A	1542	NAG	C4-C5-C6-O6
2	A	1430	NAG	O5-C5-C6-O6
2	A	1542	NAG	O5-C5-C6-O6
4	A	190	12P	C26-C27-O28-C29
4	A	189	12P	C36-C35-O34-C33
4	A	190	12P	C23-C24-O25-C26
4	A	189	12P	O31-C32-C33-O34
4	A	189	12P	C26-C27-O28-C29
4	A	190	12P	O28-C29-C30-O31

Continued on next page...

Continued from previous page...

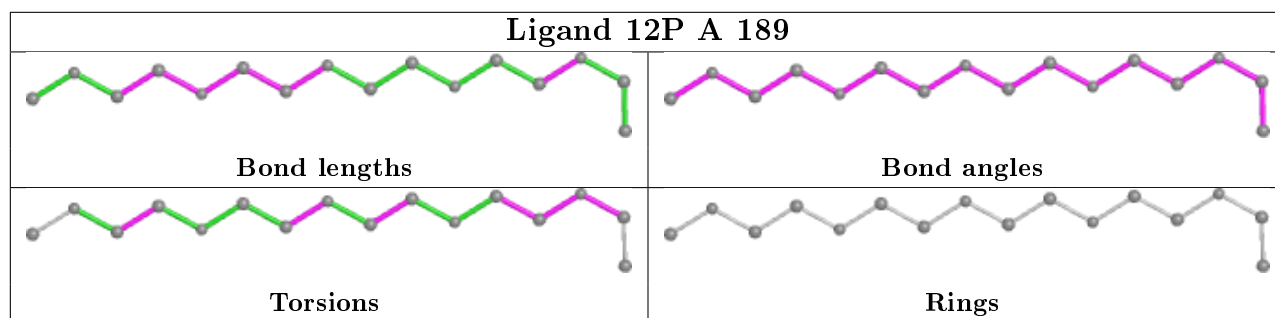
Mol	Chain	Res	Type	Atoms
2	A	1430	NAG	C8-C7-N2-C2
2	A	1542	NAG	C8-C7-N2-C2
2	A	1528	NAG	C8-C7-N2-C2
4	A	190	12P	C27-C26-O25-C24
4	A	189	12P	O22-C23-C24-O25
4	A	190	12P	C29-C30-O31-C32
2	A	1528	NAG	O5-C5-C6-O6
4	A	189	12P	C32-C33-O34-C35
2	A	1430	NAG	O7-C7-N2-C2
2	A	1542	NAG	O7-C7-N2-C2
2	A	1528	NAG	O7-C7-N2-C2
2	A	1528	NAG	C4-C5-C6-O6

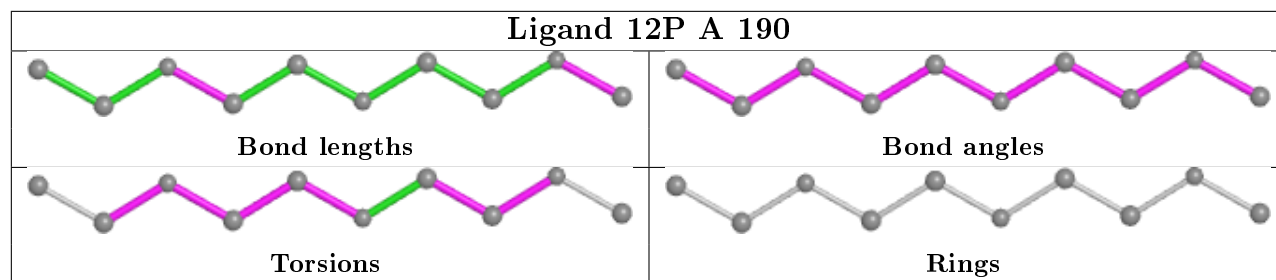
There are no ring outliers.

2 monomers are involved in 4 short contacts:

Mol	Chain	Res	Type	Clashes	Symm-Clashes
4	A	189	12P	2	0
2	A	1542	NAG	2	0

The following is a two-dimensional graphical depiction of Mogul quality analysis of bond lengths, bond angles, torsion angles, and ring geometry for all instances of the Ligand of Interest. In addition, ligands with molecular weight > 250 and outliers as shown on the validation Tables will also be included. For torsion angles, if less than 5% of the Mogul distribution of torsion angles is within 10 degrees of the torsion angle in question, then that torsion angle is considered an outlier. Any bond that is central to one or more torsion angles identified as an outlier by Mogul will be highlighted in the graph. For rings, the root-mean-square deviation (RMSD) between the ring in question and similar rings identified by Mogul is calculated over all ring torsion angles. If the average RMSD is greater than 60 degrees and the minimal RMSD between the ring in question and any Mogul-identified rings is also greater than 60 degrees, then that ring is considered an outlier. The outliers are highlighted in purple. The color gray indicates Mogul did not find sufficient equivalents in the CSD to analyse the geometry.





5.7 Other polymers [i](#)

There are no such residues in this entry.

5.8 Polymer linkage issues [i](#)

There are no chain breaks in this entry.

6 Fit of model and data

6.1 Protein, DNA and RNA chains

In the following table, the column labelled ‘#RSRZ> 2’ contains the number (and percentage) of RSRZ outliers, followed by percent RSRZ outliers for the chain as percentile scores relative to all X-ray entries and entries of similar resolution. The OWAB column contains the minimum, median, 95th percentile and maximum values of the occupancy-weighted average B-factor per residue. The column labelled ‘Q< 0.9’ lists the number of (and percentage) of residues with an average occupancy less than 0.9.

Mol	Chain	Analysed	<RSRZ>	#RSRZ>2	OWAB(Å ²)	Q<0.9
1	A	301/308 (97%)	0.32	25 (8%) 11 11	33, 54, 97, 122	0

All (25) RSRZ outliers are listed below:

Mol	Chain	Res	Type	RSRZ
1	A	490	MET	6.7
1	A	553	TRP	5.1
1	A	515	ARG	5.0
1	A	603	GLN	4.9
1	A	604	THR	4.9
1	A	440	ARG	4.0
1	A	579	TYR	4.0
1	A	297	GLN	3.9
1	A	545	CYS	3.8
1	A	493	MET	3.8
1	A	513	GLN	3.8
1	A	356	ASN	3.3
1	A	514	LEU	3.3
1	A	544	THR	3.0
1	A	329	LYS	2.9
1	A	298	PRO	2.9
1	A	305	TYR	2.6
1	A	326	GLN	2.4
1	A	386	CYS	2.4
1	A	394	GLN	2.3
1	A	554	LYS	2.2
1	A	582	GLY	2.1
1	A	492	HIS	2.1
1	A	312	SER	2.0
1	A	327	GLY	2.0

6.2 Non-standard residues in protein, DNA, RNA chains [i](#)

There are no non-standard protein/DNA/RNA residues in this entry.

6.3 Carbohydrates [i](#)

There are no monosaccharides in this entry.

6.4 Ligands [i](#)

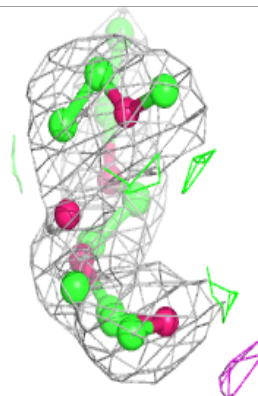
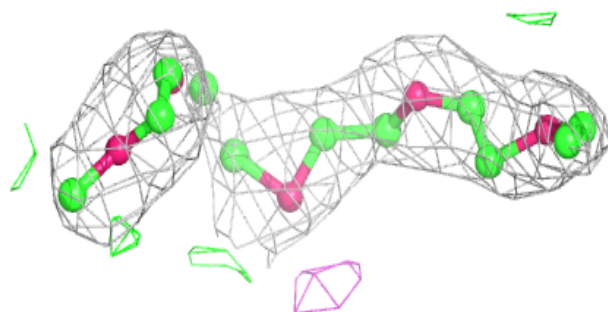
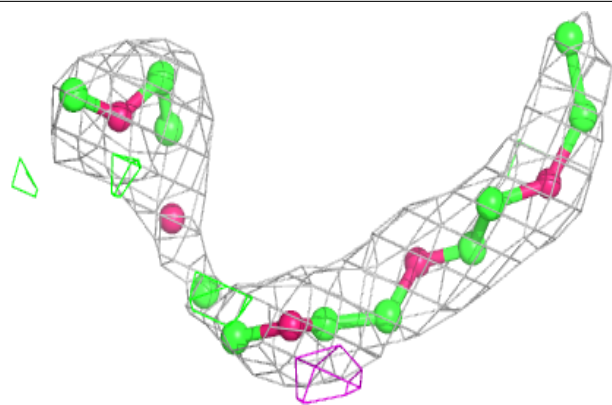
In the following table, the Atoms column lists the number of modelled atoms in the group and the number defined in the chemical component dictionary. The B-factors column lists the minimum, median, 95th percentile and maximum values of B factors of atoms in the group. The column labelled 'Q< 0.9' lists the number of atoms with occupancy less than 0.9.

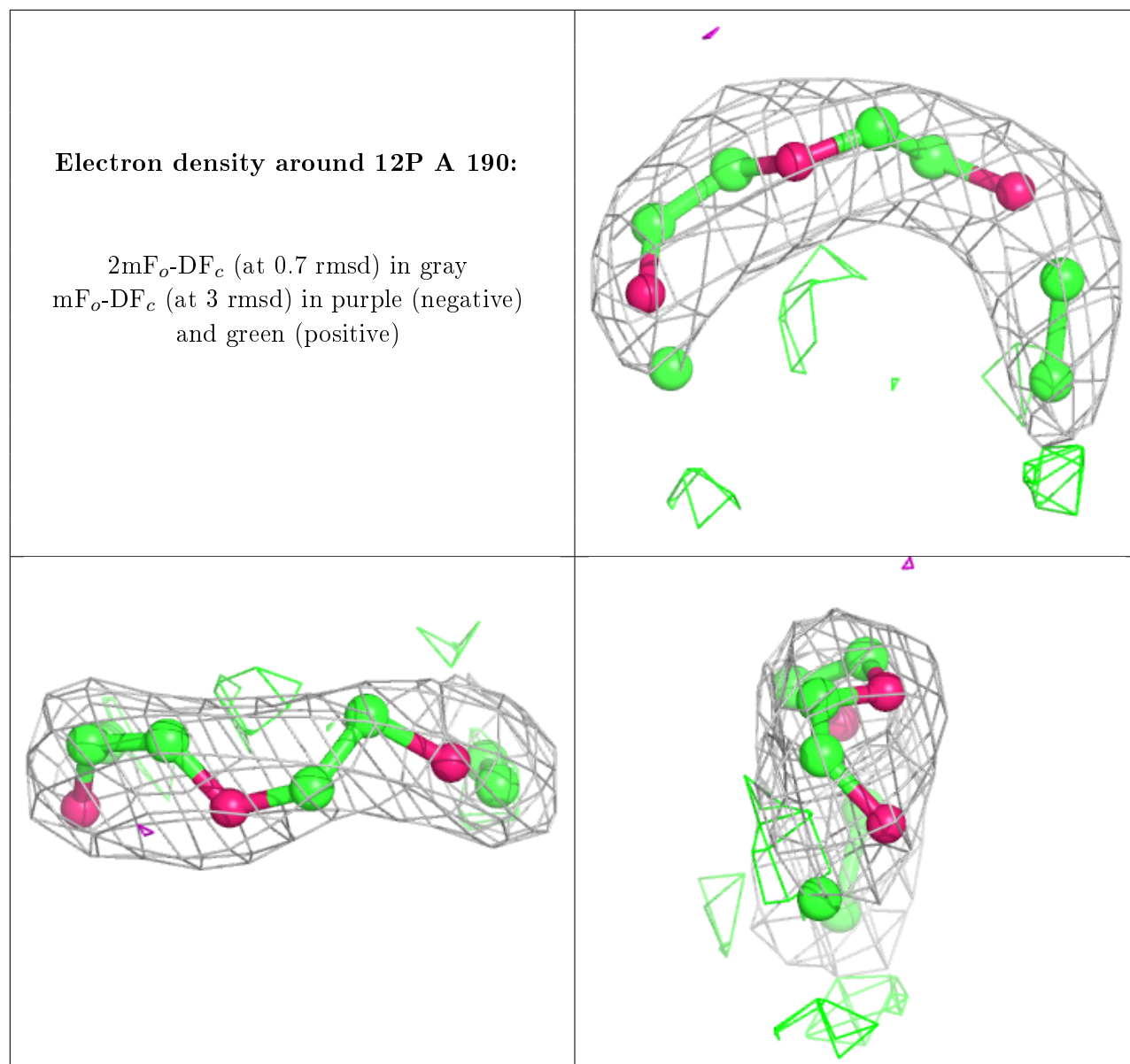
Mol	Type	Chain	Res	Atoms	RSCC	RSR	B-factors(\AA^2)	Q<0.9
2	NAG	A	1528	14/15	0.79	0.48	27,36,52,55	0
2	NAG	A	1542	14/15	0.81	0.45	27,36,52,55	0
2	NAG	A	1430	14/15	0.83	0.39	27,36,52,55	0
4	12P	A	189	16/37	0.91	0.26	59,63,65,65	0
4	12P	A	190	10/37	0.92	0.18	60,65,72,73	0
3	ZN	A	953	1/1	0.98	0.11	49,49,49,49	0
3	ZN	A	954	1/1	0.98	0.18	40,40,40,40	0
3	ZN	A	959	1/1	0.99	0.04	67,67,67,67	1
3	ZN	A	957	1/1	0.99	0.09	58,58,58,58	0
3	ZN	A	958	1/1	0.99	0.12	62,62,62,62	0
3	ZN	A	955	1/1	1.00	0.09	45,45,45,45	0
3	ZN	A	956	1/1	1.00	0.14	42,42,42,42	0

The following is a graphical depiction of the model fit to experimental electron density of all instances of the Ligand of Interest. In addition, ligands with molecular weight > 250 and outliers as shown on the geometry validation Tables will also be included. Each fit is shown from different orientation to approximate a three-dimensional view.

Electron density around 12P A 189:

$2mF_o-DF_c$ (at 0.7 rmsd) in gray
 mF_o-DF_c (at 3 rmsd) in purple (negative)
and green (positive)





6.5 Other polymers [i](#)

There are no such residues in this entry.