



Full wwPDB X-ray Structure Validation Report ⓘ

Mar 9, 2018 – 12:05 am GMT

PDB ID : 3M8M
Title : 1.05 Å Structure of Manganese-free Manganese Peroxidase
Authors : Sundaramoorthy, M.; Gold, M.H.; Poulos, T.L.
Deposited on : 2010-03-18
Resolution : 1.05 Å(reported)

This is a Full wwPDB X-ray Structure Validation Report for a publicly released PDB entry.

We welcome your comments at validation@mail.wwpdb.org

A user guide is available at

<https://www.wwpdb.org/validation/2017/XrayValidationReportHelp>

with specific help available everywhere you see the ⓘ symbol.

The following versions of software and data (see [references ⓘ](#)) were used in the production of this report:

MolProbity : 4.02b-467
Mogul : 1.7.3 (157068), CSD as539be (2018)
Xtriage (Phenix) : 1.13
EDS : trunk30967
Percentile statistics : 20171227.v01 (using entries in the PDB archive December 27th 2017)
Refmac : 5.8.0158
CCP4 : 7.0 (Gargrove)
Ideal geometry (proteins) : Engh & Huber (2001)
Ideal geometry (DNA, RNA) : Parkinson et al. (1996)
Validation Pipeline (wwPDB-VP) : trunk30967

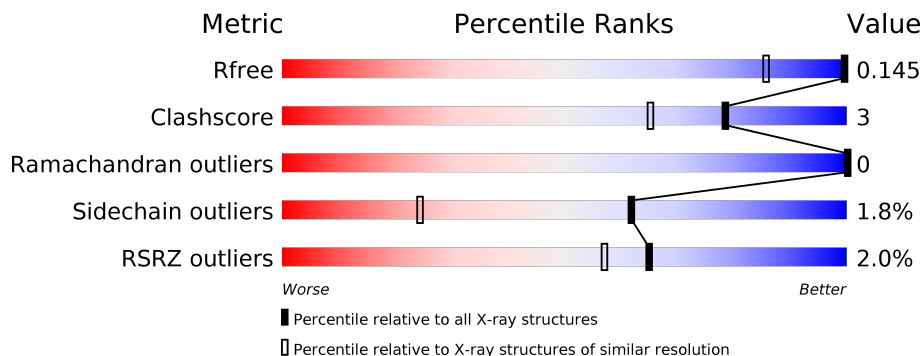
1 Overall quality at a glance

The following experimental techniques were used to determine the structure:

X-RAY DIFFRACTION

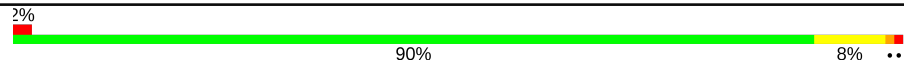
The reported resolution of this entry is 1.05 Å.

Percentile scores (ranging between 0-100) for global validation metrics of the entry are shown in the following graphic. The table shows the number of entries on which the scores are based.



Metric	Whole archive (#Entries)	Similar resolution (#Entries, resolution range(Å))
R_{free}	111664	1392 (1.12-1.00)
Clashscore	122126	1005 (1.10-1.02)
Ramachandran outliers	120053	1386 (1.12-1.00)
Sidechain outliers	120020	1384 (1.12-1.00)
RSRZ outliers	108989	1356 (1.12-1.00)

The table below summarises the geometric issues observed across the polymeric chains and their fit to the electron density. The red, orange, yellow and green segments on the lower bar indicate the fraction of residues that contain outliers for ≥ 3 , 2, 1 and 0 types of geometric quality criteria. A grey segment represents the fraction of residues that are not modelled. The numeric value for each fraction is indicated below the corresponding segment, with a dot representing fractions $\leq 5\%$. The upper red bar (where present) indicates the fraction of residues that have poor fit to the electron density. The numeric value is given above the bar.

Mol	Chain	Length	Quality of chain
1	A	357	

2 Entry composition [i](#)

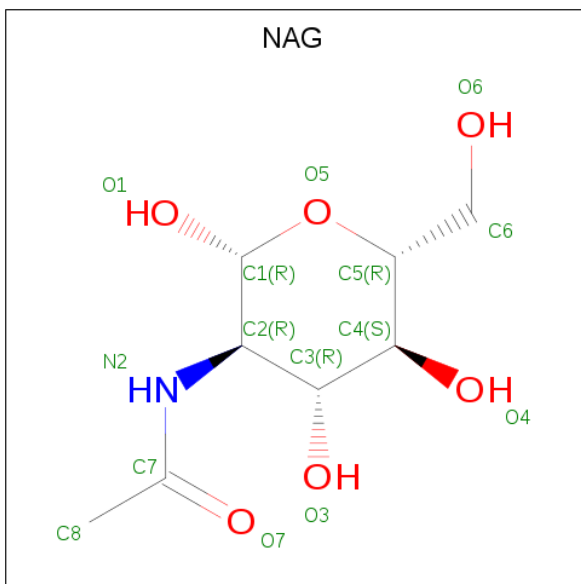
There are 7 unique types of molecules in this entry. The entry contains 3348 atoms, of which 0 are hydrogens and 0 are deuteriums.

In the tables below, the ZeroOcc column contains the number of atoms modelled with zero occupancy, the AltConf column contains the number of residues with at least one atom in alternate conformation and the Trace column contains the number of residues modelled with at most 2 atoms.

- Molecule 1 is a protein called Manganese peroxidase 1.

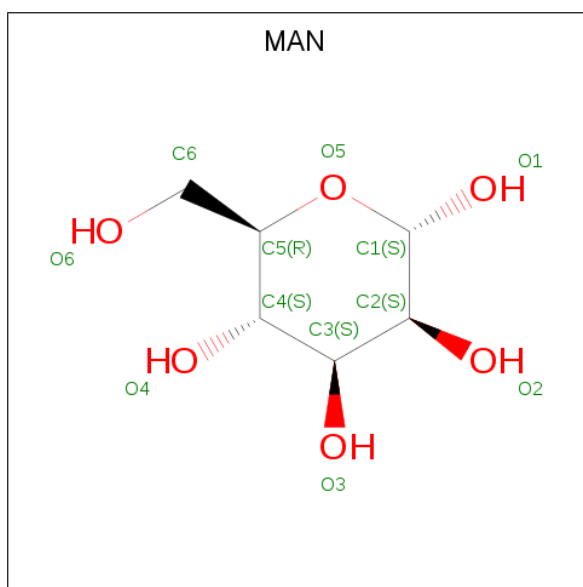
Mol	Chain	Residues	Atoms					ZeroOcc	AltConf	Trace
			Total	C	N	O	S			
1	A	357	2691	1683	459	533	16	0	22	0

- Molecule 2 is N-ACETYL-D-GLUCOSAMINE (three-letter code: NAG) (formula: C₈H₁₅NO₆).



Mol	Chain	Residues	Atoms				ZeroOcc	AltConf
			Total	C	N	O		
2	A	1	14	8	1	5	0	0
2	A	1	14	8	1	5	0	0

- Molecule 3 is ALPHA-D-MANNOSE (three-letter code: MAN) (formula: C₆H₁₂O₆).



Mol	Chain	Residues	Atoms	ZeroOcc	AltConf
3	A	1	Total C O 11 6 5	0	0

- Molecule 4 is CALCIUM ION (three-letter code: CA) (formula: Ca).

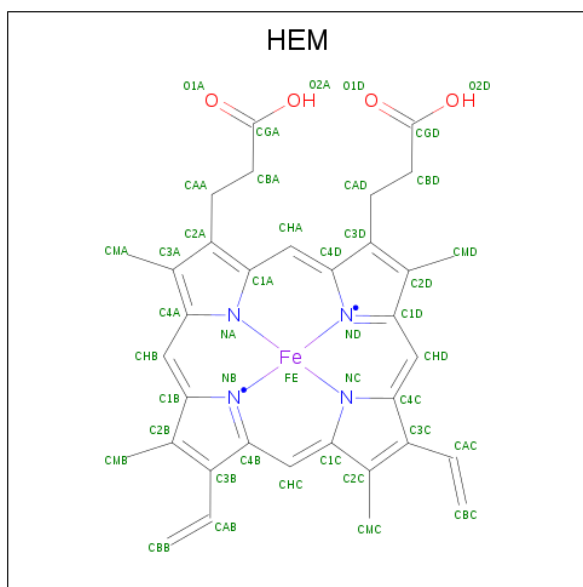
Mol	Chain	Residues	Atoms	ZeroOcc	AltConf
4	A	2	Total Ca 2 2	0	0

- Molecule 5 is GLYCEROL (three-letter code: GOL) (formula: C₃H₈O₃).



Mol	Chain	Residues	Atoms			ZeroOcc	AltConf
5	A	1	Total	C	O	0	0
			6	3	3		
5	A	1	Total	C	O	0	0
			6	3	3		

- Molecule 6 is PROTOPORPHYRIN IX CONTAINING FE (three-letter code: HEM) (formula: $C_{34}H_{32}FeN_4O_4$).



Mol	Chain	Residues	Atoms					ZeroOcc	AltConf
6	A	1	Total	C	Fe	N	O	0	0
			43	34	1	4	4		

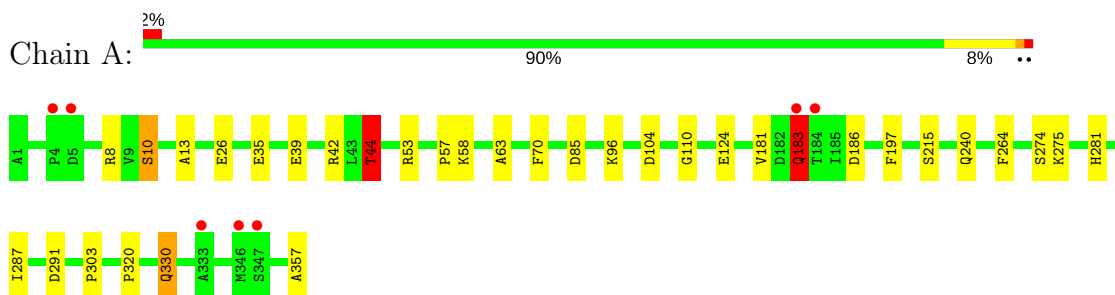
- Molecule 7 is water.

Mol	Chain	Residues	Atoms		ZeroOcc	AltConf
7	A	561	Total	O	0	5
			561	561		

3 Residue-property plots [i](#)

These plots are drawn for all protein, RNA and DNA chains in the entry. The first graphic for a chain summarises the proportions of the various outlier classes displayed in the second graphic. The second graphic shows the sequence view annotated by issues in geometry and electron density. Residues are color-coded according to the number of geometric quality criteria for which they contain at least one outlier: green = 0, yellow = 1, orange = 2 and red = 3 or more. A red dot above a residue indicates a poor fit to the electron density ($RSRZ > 2$). Stretches of 2 or more consecutive residues without any outlier are shown as a green connector. Residues present in the sample, but not in the model, are shown in grey.

- Molecule 1: Manganese peroxidase 1



4 Data and refinement statistics

Property	Value	Source
Space group	C 1 2 1	Depositor
Cell constants a, b, c, α , β , γ	160.57Å 45.30Å 52.83Å 90.00° 97.31° 90.00°	Depositor
Resolution (Å)	8.00 – 1.05 20.79 – 1.05	Depositor EDS
% Data completeness (in resolution range)	89.7 (8.00-1.05) 89.7 (20.79-1.05)	Depositor EDS
R_{merge}	(Not available)	Depositor
R_{sym}	0.05	Depositor
$\langle I/\sigma(I) \rangle$ ¹	1.06 (at 1.05Å)	Xtrriage
Refinement program	SHELX, SHELXL-97	Depositor
R, R_{free}	0.117 , 0.139 0.124 , 0.145	Depositor DCC
R_{free} test set	3362 reflections (2.09%)	wwPDB-VP
Wilson B-factor (Å ²)	7.7	Xtrriage
Anisotropy	0.056	Xtrriage
Bulk solvent k_{sol} (e/Å ³), B_{sol} (Å ²)	0.37 , 54.5	EDS
L-test for twinning ²	$\langle L \rangle = 0.49$, $\langle L^2 \rangle = 0.32$	Xtrriage
Estimated twinning fraction	No twinning to report.	Xtrriage
F_o, F_c correlation	0.98	EDS
Total number of atoms	3348	wwPDB-VP
Average B, all atoms (Å ²)	13.0	wwPDB-VP

Xtrriage's analysis on translational NCS is as follows: *The largest off-origin peak in the Patterson function is 7.66% of the height of the origin peak. No significant pseudotranslation is detected.*

¹Intensities estimated from amplitudes.

²Theoretical values of $\langle |L| \rangle$, $\langle L^2 \rangle$ for acentric reflections are 0.5, 0.333 respectively for untwinned datasets, and 0.375, 0.2 for perfectly twinned datasets.

5 Model quality [i](#)

5.1 Standard geometry [i](#)

Bond lengths and bond angles in the following residue types are not validated in this section: GOL, CA, MAN, NAG, HEM

The Z score for a bond length (or angle) is the number of standard deviations the observed value is removed from the expected value. A bond length (or angle) with $|Z| > 5$ is considered an outlier worth inspection. RMSZ is the root-mean-square of all Z scores of the bond lengths (or angles).

Mol	Chain	Bond lengths		Bond angles	
		RMSZ	# Z >5	RMSZ	# Z >5
1	A	0.83	3/2866 (0.1%)	1.16	20/3904 (0.5%)

All (3) bond length outliers are listed below:

Mol	Chain	Res	Type	Atoms	Z	Observed(Å)	Ideal(Å)
1	A	357	ALA	C-OXT	15.60	1.52	1.23
1	A	357	ALA	C-O	12.13	1.46	1.23
1	A	26	GLU	CD-OE2	6.09	1.32	1.25

All (20) bond angle outliers are listed below:

Mol	Chain	Res	Type	Atoms	Z	Observed(°)	Ideal(°)
1	A	8	ARG	NE-CZ-NH2	-13.83	113.38	120.30
1	A	44[A]	THR	OG1-CB-CG2	12.86	139.58	110.00
1	A	44[B]	THR	OG1-CB-CG2	12.86	139.58	110.00
1	A	8	ARG	NE-CZ-NH1	10.44	125.52	120.30
1	A	44[A]	THR	CA-CB-CG2	-9.58	98.98	112.40
1	A	44[B]	THR	CA-CB-CG2	-9.58	98.98	112.40
1	A	53	ARG	NE-CZ-NH2	-8.92	115.84	120.30
1	A	42[A]	ARG	CD-NE-CZ	8.23	135.12	123.60
1	A	42[B]	ARG	CD-NE-CZ	8.23	135.12	123.60
1	A	183	GLN	CA-CB-CG	7.04	128.89	113.40
1	A	330	GLN	OE1-CD-NE2	6.17	136.10	121.90
1	A	264	PHE	CB-CG-CD1	6.03	125.02	120.80
1	A	197	PHE	CB-CG-CD2	-5.74	116.78	120.80
1	A	330	GLN	CG-CD-OE1	-5.55	110.50	121.60
1	A	215[A]	SER	O-C-N	-5.43	114.01	122.70
1	A	215[B]	SER	O-C-N	-5.43	114.01	122.70
1	A	10	SER	N-CA-CB	-5.34	102.49	110.50
1	A	186	ASP	CB-CG-OD2	5.26	123.03	118.30

Continued on next page...

Continued from previous page...

Mol	Chain	Res	Type	Atoms	Z	Observed(°)	Ideal(°)
1	A	85	ASP	CB-CG-OD1	5.11	122.89	118.30
1	A	104	ASP	CB-CG-OD1	5.01	122.81	118.30

There are no chirality outliers.

There are no planarity outliers.

5.2 Too-close contacts

In the following table, the Non-H and H(model) columns list the number of non-hydrogen atoms and hydrogen atoms in the chain respectively. The H(added) column lists the number of hydrogen atoms added and optimized by MolProbity. The Clashes column lists the number of clashes within the asymmetric unit, whereas Symm-Clashes lists symmetry related clashes.

Mol	Chain	Non-H	H(model)	H(added)	Clashes	Symm-Clashes
1	A	2691	0	2587	16	0
2	A	28	0	25	0	0
3	A	11	0	10	0	0
4	A	2	0	0	0	0
5	A	12	0	14	3	0
6	A	43	0	30	0	0
7	A	561	0	0	9	0
All	All	3348	0	2666	17	0

The all-atom clashscore is defined as the number of clashes found per 1000 atoms (including hydrogen atoms). The all-atom clashscore for this structure is 3.

All (17) close contacts within the same asymmetric unit are listed below, sorted by their clash magnitude.

Atom-1	Atom-2	Interatomic distance (Å)	Clash overlap (Å)
5:A:391:GOL:H31	7:A:1289:HOH:O	1.93	0.66
1:A:281:HIS:HD2	7:A:1073:HOH:O	1.84	0.60
1:A:70:PHE:CZ	5:A:392:GOL:H32	2.37	0.60
1:A:303[B]:PRO:HG2	7:A:1231:HOH:O	2.01	0.59
1:A:57:PRO:HD3	7:A:1470:HOH:O	2.04	0.57
1:A:63:ALA:O	1:A:281:HIS:HE1	1.90	0.54
1:A:35[B]:GLU:OE1	1:A:39[B]:GLU:OE1	2.28	0.52
1:A:44[A]:THR:HG21	1:A:110:GLY:HA3	1.93	0.49
1:A:10:SER:HB3	1:A:291[B]:ASP:OD1	2.13	0.48
1:A:70:PHE:CE1	5:A:392:GOL:H32	2.50	0.47
1:A:320:PRO:HD2	7:A:1224:HOH:O	2.14	0.46

Continued on next page...

Continued from previous page...

Atom-1	Atom-2	Interatomic distance (Å)	Clash overlap (Å)
1:A:183:GLN:HG2	7:A:1112:HOH:O	2.16	0.46
1:A:181:VAL:HA	7:A:1320:HOH:O	2.17	0.45
1:A:96:LYS:HD3	7:A:1289:HOH:O	2.17	0.43
1:A:124:GLU:OE2	1:A:274[B]:SER:OG	2.29	0.42
1:A:13:ALA:HB3	1:A:287[B]:ILE:CD1	2.50	0.42
1:A:275[A]:LYS:HE3	7:A:1292:HOH:O	2.21	0.40

There are no symmetry-related clashes.

5.3 Torsion angles [i](#)

5.3.1 Protein backbone [i](#)

In the following table, the Percentiles column shows the percent Ramachandran outliers of the chain as a percentile score with respect to all X-ray entries followed by that with respect to entries of similar resolution.

The Analysed column shows the number of residues for which the backbone conformation was analysed, and the total number of residues.

Mol	Chain	Analysed	Favoured	Allowed	Outliers	Percentiles
1	A	378/357 (106%)	371 (98%)	7 (2%)	0	100 100

There are no Ramachandran outliers to report.

5.3.2 Protein sidechains [i](#)

In the following table, the Percentiles column shows the percent sidechain outliers of the chain as a percentile score with respect to all X-ray entries followed by that with respect to entries of similar resolution.

The Analysed column shows the number of residues for which the sidechain conformation was analysed, and the total number of residues.

Mol	Chain	Analysed	Rotameric	Outliers	Percentiles
1	A	306/285 (107%)	300 (98%)	6 (2%)	58 20

All (6) residues with a non-rotameric sidechain are listed below:

Mol	Chain	Res	Type
1	A	44[A]	THR
1	A	44[B]	THR
1	A	58	LYS
1	A	183	GLN
1	A	240	GLN
1	A	330	GLN

Some sidechains can be flipped to improve hydrogen bonding and reduce clashes. All (8) such sidechains are listed below:

Mol	Chain	Res	Type
1	A	31	ASN
1	A	95	GLN
1	A	107	GLN
1	A	218	ASN
1	A	281	HIS
1	A	284	ASN
1	A	335	GLN
1	A	352	GLN

5.3.3 RNA [i](#)

There are no RNA molecules in this entry.

5.4 Non-standard residues in protein, DNA, RNA chains [i](#)

There are no non-standard protein/DNA/RNA residues in this entry.

5.5 Carbohydrates [i](#)

There are no carbohydrates in this entry.

5.6 Ligand geometry [i](#)

Of 8 ligands modelled in this entry, 2 are monoatomic - leaving 6 for Mogul analysis.

In the following table, the Counts columns list the number of bonds (or angles) for which Mogul statistics could be retrieved, the number of bonds (or angles) that are observed in the model and the number of bonds (or angles) that are defined in the Chemical Component Dictionary. The Link column lists molecule types, if any, to which the group is linked. The Z score for a bond length (or angle) is the number of standard deviations the observed value is removed from the

expected value. A bond length (or angle) with $|Z| > 2$ is considered an outlier worth inspection. RMSZ is the root-mean-square of all Z scores of the bond lengths (or angles).

Mol	Type	Chain	Res	Link	Bond lengths			Bond angles		
					Counts	RMSZ	# $ Z > 2$	Counts	RMSZ	# $ Z > 2$
2	NAG	A	361	1,2	14,14,15	0.72	0	17,19,21	0.74	0
2	NAG	A	362	2	14,14,15	0.69	0	17,19,21	1.17	2 (11%)
3	MAN	A	364	1	11,11,12	0.68	0	15,15,17	1.48	4 (26%)
5	GOL	A	391	-	5,5,5	0.81	0	5,5,5	0.99	0
5	GOL	A	392	-	5,5,5	1.08	0	5,5,5	1.80	1 (20%)
6	HEM	A	396	1,7	27,50,50	1.29	3 (11%)	17,82,82	1.62	5 (29%)

In the following table, the Chirals column lists the number of chiral outliers, the number of chiral centers analysed, the number of these observed in the model and the number defined in the Chemical Component Dictionary. Similar counts are reported in the Torsion and Rings columns. '-' means no outliers of that kind were identified.

Mol	Type	Chain	Res	Link	Chirals	Torsions	Rings
2	NAG	A	361	1,2	-	0/6/23/26	0/1/1/1
2	NAG	A	362	2	-	0/6/23/26	0/1/1/1
3	MAN	A	364	1	-	0/2/19/22	0/1/1/1
5	GOL	A	391	-	-	0/4/4/4	0/0/0/0
5	GOL	A	392	-	-	0/4/4/4	0/0/0/0
6	HEM	A	396	1,7	-	0/6/54/54	0/0/8/8

All (3) bond length outliers are listed below:

Mol	Chain	Res	Type	Atoms	Z	Observed(Å)	Ideal(Å)
6	A	396	HEM	C3B-CAB	-3.79	1.40	1.47
6	A	396	HEM	C3C-C2C	-2.49	1.36	1.40
6	A	396	HEM	C3C-CAC	-2.17	1.43	1.47

All (12) bond angle outliers are listed below:

Mol	Chain	Res	Type	Atoms	Z	Observed(°)	Ideal(°)
6	A	396	HEM	CMA-C3A-C4A	-3.69	122.80	128.46
3	A	364	MAN	O5-C5-C6	-2.71	102.86	107.15
2	A	362	NAG	C1-C2-N2	-2.64	105.98	110.49
5	A	392	GOL	O3-C3-C2	-2.50	98.00	110.11
2	A	362	NAG	O7-C7-C8	-2.46	117.63	122.07
6	A	396	HEM	CMD-C2D-C1D	-2.29	124.95	128.46
6	A	396	HEM	C4C-C3C-C2C	-2.11	105.42	106.90
6	A	396	HEM	CMB-C2B-C3B	2.05	128.62	124.88

Continued on next page...

Continued from previous page...

Mol	Chain	Res	Type	Atoms	Z	Observed(°)	Ideal(°)
3	A	364	MAN	O6-C6-C5	2.12	118.69	111.29
3	A	364	MAN	C1-C2-C3	2.26	112.52	109.66
3	A	364	MAN	C1-O5-C5	2.27	115.31	112.19
6	A	396	HEM	CMA-C3A-C2A	2.79	130.19	124.94

There are no chirality outliers.

There are no torsion outliers.

There are no ring outliers.

2 monomers are involved in 3 short contacts:

Mol	Chain	Res	Type	Clashes	Symm-Clashes
5	A	391	GOL	1	0
5	A	392	GOL	2	0

5.7 Other polymers [i](#)

There are no such residues in this entry.

5.8 Polymer linkage issues [i](#)

There are no chain breaks in this entry.

6 Fit of model and data [i](#)

6.1 Protein, DNA and RNA chains [i](#)

In the following table, the column labelled '#RSRZ > 2' contains the number (and percentage) of RSRZ outliers, followed by percent RSRZ outliers for the chain as percentile scores relative to all X-ray entries and entries of similar resolution. The OWAB column contains the minimum, median, 95th percentile and maximum values of the occupancy-weighted average B-factor per residue. The column labelled 'Q < 0.9' lists the number of (and percentage) of residues with an average occupancy less than 0.9.

Mol	Chain	Analysed	<RSRZ>	#RSRZ>2	OWAB(Å ²)	Q<0.9
1	A	357/357 (100%)	-0.14	7 (1%) 65 57	6, 9, 21, 49	0

All (7) RSRZ outliers are listed below:

Mol	Chain	Res	Type	RSRZ
1	A	4	PRO	4.1
1	A	346	MET	3.4
1	A	183	GLN	3.2
1	A	184	THR	2.9
1	A	333	ALA	2.5
1	A	5	ASP	2.5
1	A	347	SER	2.0

6.2 Non-standard residues in protein, DNA, RNA chains [i](#)

There are no non-standard protein/DNA/RNA residues in this entry.

6.3 Carbohydrates [i](#)

There are no carbohydrates in this entry.

6.4 Ligands [i](#)

In the following table, the Atoms column lists the number of modelled atoms in the group and the number defined in the chemical component dictionary. The B-factors column lists the minimum, median, 95th percentile and maximum values of B factors of atoms in the group. The column labelled 'Q < 0.9' lists the number of atoms with occupancy less than 0.9.

Mol	Type	Chain	Res	Atoms	RSCC	RSR	B-factors(Å ²)	Q<0.9
5	GOL	A	392	6/6	0.93	0.18	19,23,23,26	0

Continued on next page...

Continued from previous page...

Mol	Type	Chain	Res	Atoms	RSCC	RSR	B-factors(\AA^2)	Q<0.9
3	MAN	A	364	11/12	0.94	0.18	15,19,26,32	0
5	GOL	A	391	6/6	0.96	0.07	13,17,19,28	0
2	NAG	A	362	14/15	0.97	0.09	14,17,22,23	0
2	NAG	A	361	14/15	0.98	0.06	10,12,16,17	0
6	HEM	A	396	43/43	0.99	0.06	6,7,10,18	0
4	CA	A	371	1/1	1.00	0.04	5,5,5,5	0
4	CA	A	372	1/1	1.00	0.04	5,5,5,5	0

6.5 Other polymers [\(i\)](#)

There are no such residues in this entry.