



Full wwPDB X-ray Structure Validation Report ⓘ

Mar 8, 2018 – 10:23 pm GMT

PDB ID : 5M82
Title : Three-dimensional structure of the photoproduct state of GAF3 from Slr1393 of *Synechocystis* sp. PCC6803
Authors : Xu, X.-L.; Zhao, K.-H.; Gaertner, W.; Hoepfner, A.
Deposited on : 2016-10-28
Resolution : 1.86 Å (reported)

This is a Full wwPDB X-ray Structure Validation Report for a publicly released PDB entry.

We welcome your comments at validation@mail.wwpdb.org

A user guide is available at

<https://www.wwpdb.org/validation/2017/XrayValidationReportHelp>

with specific help available everywhere you see the ⓘ symbol.

The following versions of software and data (see [references ⓘ](#)) were used in the production of this report:

MolProbity : 4.02b-467
Mogul : 1.7.3 (157068), CSD as539be (2018)
Xtriage (Phenix) : 1.13
EDS : trunk30967
Percentile statistics : 20171227.v01 (using entries in the PDB archive December 27th 2017)
Refmac : 5.8.0158
CCP4 : 7.0 (Gargrove)
Ideal geometry (proteins) : Engh & Huber (2001)
Ideal geometry (DNA, RNA) : Parkinson et al. (1996)
Validation Pipeline (wwPDB-VP) : trunk30967

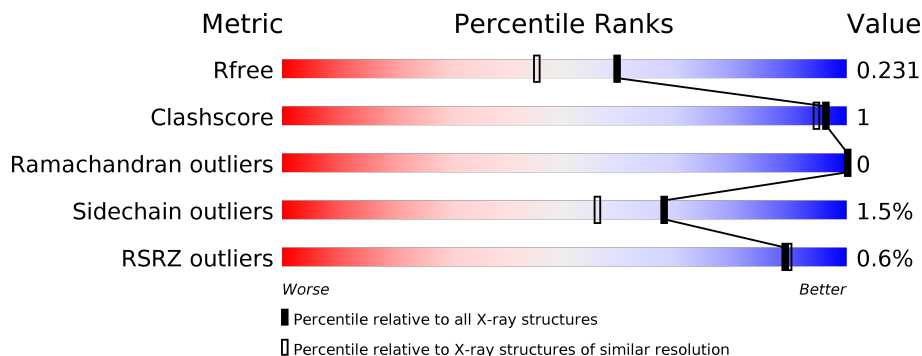
1 Overall quality at a glance

The following experimental techniques were used to determine the structure:

X-RAY DIFFRACTION

The reported resolution of this entry is 1.86 Å.

Percentile scores (ranging between 0-100) for global validation metrics of the entry are shown in the following graphic. The table shows the number of entries on which the scores are based.



Metric	Whole archive (#Entries)	Similar resolution (#Entries, resolution range(Å))
R_{free}	111664	2111 (1.86-1.86)
Clashscore	122126	2258 (1.86-1.86)
Ramachandran outliers	120053	2234 (1.86-1.86)
Sidechain outliers	120020	2234 (1.86-1.86)
RSRZ outliers	108989	2075 (1.86-1.86)

The table below summarises the geometric issues observed across the polymeric chains and their fit to the electron density. The red, orange, yellow and green segments on the lower bar indicate the fraction of residues that contain outliers for ≥ 3 , 2, 1 and 0 types of geometric quality criteria. A grey segment represents the fraction of residues that are not modelled. The numeric value for each fraction is indicated below the corresponding segment, with a dot representing fractions $\leq 5\%$. The upper red bar (where present) indicates the fraction of residues that have poor fit to the electron density. The numeric value is given above the bar.

Mol	Chain	Length	Quality of chain
1	A	215	

2 Entry composition i

There are 5 unique types of molecules in this entry. The entry contains 1435 atoms, of which 0 are hydrogens and 0 are deuteriums.

In the tables below, the ZeroOcc column contains the number of atoms modelled with zero occupancy, the AltConf column contains the number of residues with at least one atom in alternate conformation and the Trace column contains the number of residues modelled with at most 2 atoms.

- Molecule 1 is a protein called Sensory transduction histidine kinase.

Mol	Chain	Residues	Atoms					ZeroOcc	AltConf	Trace
			Total	C	N	O	S			
1	A	158	1307	831	236	237	3	0	1	0

There are 58 discrepancies between the modelled and reference sequences:

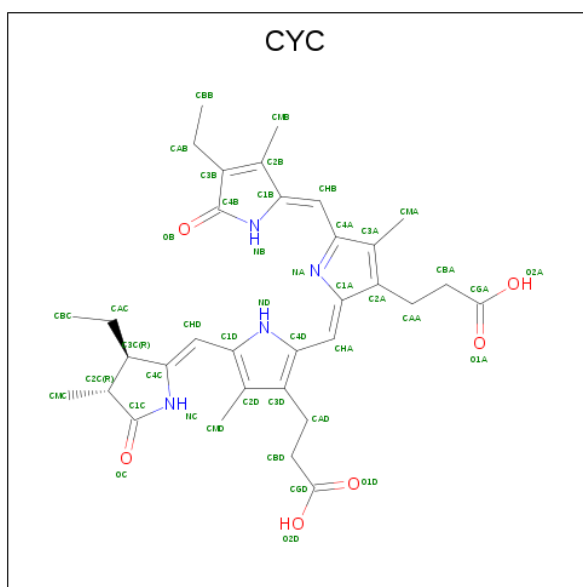
Chain	Residue	Modelled	Actual	Comment	Reference
A	391	MET	-	initiating methionine	UNP P73184
A	392	HIS	-	expression tag	UNP P73184
A	393	HIS	-	expression tag	UNP P73184
A	394	HIS	-	expression tag	UNP P73184
A	395	HIS	-	expression tag	UNP P73184
A	396	HIS	-	expression tag	UNP P73184
A	397	HIS	-	expression tag	UNP P73184
A	398	SER	-	expression tag	UNP P73184
A	399	SER	-	expression tag	UNP P73184
A	400	GLY	-	expression tag	UNP P73184
A	401	LEU	-	expression tag	UNP P73184
A	402	VAL	-	expression tag	UNP P73184
A	403	PRO	-	expression tag	UNP P73184
A	404	ARG	-	expression tag	UNP P73184
A	405	GLY	-	expression tag	UNP P73184
A	406	SER	-	expression tag	UNP P73184
A	407	GLY	-	expression tag	UNP P73184
A	408	MET	-	expression tag	UNP P73184
A	409	LYS	-	expression tag	UNP P73184
A	410	GLU	-	expression tag	UNP P73184
A	411	THR	-	expression tag	UNP P73184
A	412	ALA	-	expression tag	UNP P73184
A	413	ALA	-	expression tag	UNP P73184
A	414	ALA	-	expression tag	UNP P73184
A	415	LYS	-	expression tag	UNP P73184
A	416	PHE	-	expression tag	UNP P73184
A	417	GLU	-	expression tag	UNP P73184

Continued on next page...

Continued from previous page...

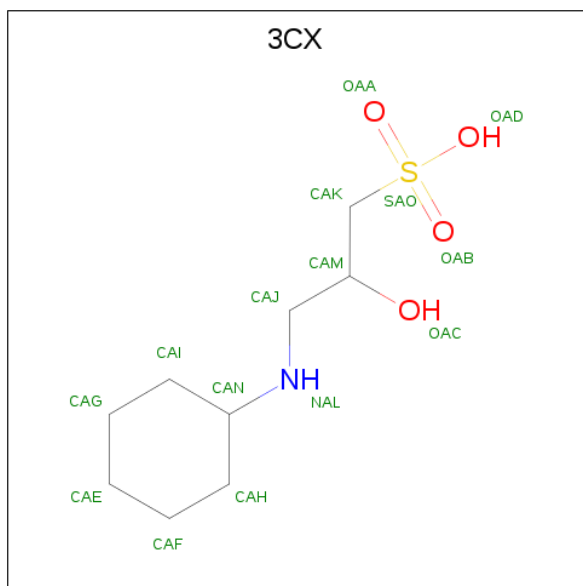
Chain	Residue	Modelled	Actual	Comment	Reference
A	418	ARG	-	expression tag	UNP P73184
A	419	GLN	-	expression tag	UNP P73184
A	420	HIS	-	expression tag	UNP P73184
A	421	MET	-	expression tag	UNP P73184
A	422	ASP	-	expression tag	UNP P73184
A	423	SER	-	expression tag	UNP P73184
A	424	PRO	-	expression tag	UNP P73184
A	425	ASP	-	expression tag	UNP P73184
A	426	LEU	-	expression tag	UNP P73184
A	427	GLY	-	expression tag	UNP P73184
A	428	THR	-	expression tag	UNP P73184
A	429	ASP	-	expression tag	UNP P73184
A	430	ASP	-	expression tag	UNP P73184
A	431	ASP	-	expression tag	UNP P73184
A	432	ASP	-	expression tag	UNP P73184
A	433	LYS	-	expression tag	UNP P73184
A	434	ALA	-	expression tag	UNP P73184
A	435	MET	-	expression tag	UNP P73184
A	436	ALA	-	expression tag	UNP P73184
A	437	ASP	-	expression tag	UNP P73184
A	438	ILE	-	expression tag	UNP P73184
A	439	GLY	-	expression tag	UNP P73184
A	440	SER	-	expression tag	UNP P73184
A	598	LEU	-	expression tag	UNP P73184
A	599	GLU	-	expression tag	UNP P73184
A	600	HIS	-	expression tag	UNP P73184
A	601	HIS	-	expression tag	UNP P73184
A	602	HIS	-	expression tag	UNP P73184
A	603	HIS	-	expression tag	UNP P73184
A	604	HIS	-	expression tag	UNP P73184
A	605	HIS	-	expression tag	UNP P73184

- Molecule 2 is PHYCOCYANOBILIN (three-letter code: CYC) (formula: C₃₃H₄₀N₄O₆).



Mol	Chain	Residues	Atoms				ZeroOcc	AltConf
			Total	C	N	O		
2	A	1	43	33	4	6	0	0

- Molecule 3 is (2S)-3-(cyclohexylamino)-2-hydroxypropane-1-sulfonic acid (three-letter code: 3CX) (formula: $C_9H_{19}NO_4S$).



Mol	Chain	Residues	Atoms					ZeroOcc	AltConf
			Total	C	N	O	S		
3	A	1	15	9	1	4	1	0	0

- Molecule 4 is SODIUM ION (three-letter code: NA) (formula: Na).

Mol	Chain	Residues	Atoms		ZeroOcc	AltConf
4	A	3	Total 3	Na 3	0	0

- Molecule 5 is water.

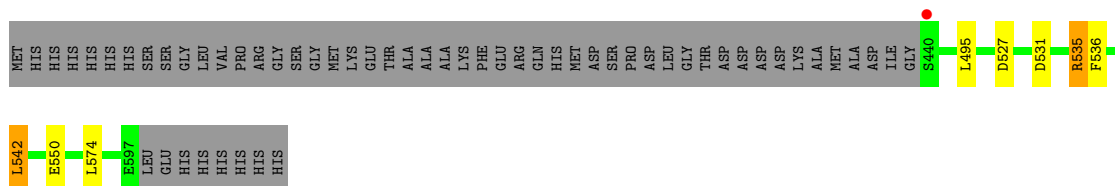
Mol	Chain	Residues	Atoms		ZeroOcc	AltConf
5	A	67	Total 67	O 67	0	0

3 Residue-property plots [i](#)

These plots are drawn for all protein, RNA and DNA chains in the entry. The first graphic for a chain summarises the proportions of the various outlier classes displayed in the second graphic. The second graphic shows the sequence view annotated by issues in geometry and electron density. Residues are color-coded according to the number of geometric quality criteria for which they contain at least one outlier: green = 0, yellow = 1, orange = 2 and red = 3 or more. A red dot above a residue indicates a poor fit to the electron density ($RSRZ > 2$). Stretches of 2 or more consecutive residues without any outlier are shown as a green connector. Residues present in the sample, but not in the model, are shown in grey.

- Molecule 1: Sensory transduction histidine kinase

Chain A:  70% 27%



4 Data and refinement statistics

Property	Value	Source
Space group	P 65	Depositor
Cell constants a, b, c, α , β , γ	75.29Å 75.29Å 71.38Å 90.00° 90.00° 120.00°	Depositor
Resolution (Å)	65.20 – 1.86 65.20 – 1.86	Depositor EDS
% Data completeness (in resolution range)	94.3 (65.20-1.86) 94.3 (65.20-1.86)	Depositor EDS
R_{merge}	(Not available)	Depositor
R_{sym}	0.03	Depositor
$\langle I/\sigma(I) \rangle$ ¹	1.77 (at 1.87Å)	Xtrriage
Refinement program	REFMAC 5.8.0131	Depositor
R, R_{free}	0.194 , 0.229 0.200 , 0.231	Depositor DCC
R_{free} test set	921 reflections (5.06%)	wwPDB-VP
Wilson B-factor (Å ²)	33.3	Xtrriage
Anisotropy	0.020	Xtrriage
Bulk solvent k_{sol} (e/Å ³), B_{sol} (Å ²)	0.33 , 33.9	EDS
L-test for twinning ²	$\langle L \rangle = 0.48$, $\langle L^2 \rangle = 0.31$	Xtrriage
Estimated twinning fraction	0.049 for h,-h-k,-l	Xtrriage
F_o, F_c correlation	0.96	EDS
Total number of atoms	1435	wwPDB-VP
Average B, all atoms (Å ²)	38.0	wwPDB-VP

Xtrriage's analysis on translational NCS is as follows: *The largest off-origin peak in the Patterson function is 5.73% of the height of the origin peak. No significant pseudotranslation is detected.*

¹Intensities estimated from amplitudes.

²Theoretical values of $\langle |L| \rangle$, $\langle L^2 \rangle$ for acentric reflections are 0.5, 0.333 respectively for untwinned datasets, and 0.375, 0.2 for perfectly twinned datasets.

5 Model quality [i](#)

5.1 Standard geometry [i](#)

Bond lengths and bond angles in the following residue types are not validated in this section: CYC, NA, 3CX

The Z score for a bond length (or angle) is the number of standard deviations the observed value is removed from the expected value. A bond length (or angle) with $|Z| > 5$ is considered an outlier worth inspection. RMSZ is the root-mean-square of all Z scores of the bond lengths (or angles).

Mol	Chain	Bond lengths		Bond angles	
		RMSZ	# Z >5	RMSZ	# Z >5
1	A	0.96	0/1345	1.02	4/1828 (0.2%)

There are no bond length outliers.

All (4) bond angle outliers are listed below:

Mol	Chain	Res	Type	Atoms	Z	Observed(°)	Ideal(°)
1	A	535	ARG	NE-CZ-NH2	-6.52	117.04	120.30
1	A	542	LEU	CB-CG-CD1	5.50	120.35	111.00
1	A	550	GLU	CB-CA-C	5.44	121.27	110.40
1	A	527	ASP	CB-CG-OD1	5.10	122.89	118.30

There are no chirality outliers.

There are no planarity outliers.

5.2 Too-close contacts [i](#)

In the following table, the Non-H and H(model) columns list the number of non-hydrogen atoms and hydrogen atoms in the chain respectively. The H(added) column lists the number of hydrogen atoms added and optimized by MolProbity. The Clashes column lists the number of clashes within the asymmetric unit, whereas Symm-Clashes lists symmetry related clashes.

Mol	Chain	Non-H	H(model)	H(added)	Clashes	Symm-Clashes
1	A	1307	0	1241	3	0
2	A	43	0	37	0	0
3	A	15	0	19	0	0
4	A	3	0	0	0	0
5	A	67	0	0	0	0
All	All	1435	0	1297	3	0

The all-atom clashscore is defined as the number of clashes found per 1000 atoms (including hydrogen atoms). The all-atom clashscore for this structure is 1.

All (3) close contacts within the same asymmetric unit are listed below, sorted by their clash magnitude.

Atom-1	Atom-2	Interatomic distance (Å)	Clash overlap (Å)
1:A:495:LEU:HD21	1:A:536:PHE:CZ	2.51	0.44
1:A:531:ASP:O	1:A:535:ARG:HG3	2.20	0.42
1:A:531:ASP:OD2	1:A:535:ARG:NE	2.41	0.40

There are no symmetry-related clashes.

5.3 Torsion angles [i](#)

5.3.1 Protein backbone [i](#)

In the following table, the Percentiles column shows the percent Ramachandran outliers of the chain as a percentile score with respect to all X-ray entries followed by that with respect to entries of similar resolution.

The Analysed column shows the number of residues for which the backbone conformation was analysed, and the total number of residues.

Mol	Chain	Analysed	Favoured	Allowed	Outliers	Percentiles
1	A	157/215 (73%)	152 (97%)	5 (3%)	0	100 100

There are no Ramachandran outliers to report.

5.3.2 Protein sidechains [i](#)

In the following table, the Percentiles column shows the percent sidechain outliers of the chain as a percentile score with respect to all X-ray entries followed by that with respect to entries of similar resolution.

The Analysed column shows the number of residues for which the sidechain conformation was analysed, and the total number of residues.

Mol	Chain	Analysed	Rotameric	Outliers	Percentiles
1	A	137/183 (75%)	135 (98%)	2 (2%)	67 56

All (2) residues with a non-rotameric sidechain are listed below:

Mol	Chain	Res	Type
1	A	542	LEU
1	A	574	LEU

Some sidechains can be flipped to improve hydrogen bonding and reduce clashes. There are no such sidechains identified.

5.3.3 RNA [i](#)

There are no RNA molecules in this entry.

5.4 Non-standard residues in protein, DNA, RNA chains [i](#)

There are no non-standard protein/DNA/RNA residues in this entry.

5.5 Carbohydrates [i](#)

There are no carbohydrates in this entry.

5.6 Ligand geometry [i](#)

Of 5 ligands modelled in this entry, 3 are monoatomic - leaving 2 for Mogul analysis.

In the following table, the Counts columns list the number of bonds (or angles) for which Mogul statistics could be retrieved, the number of bonds (or angles) that are observed in the model and the number of bonds (or angles) that are defined in the Chemical Component Dictionary. The Link column lists molecule types, if any, to which the group is linked. The Z score for a bond length (or angle) is the number of standard deviations the observed value is removed from the expected value. A bond length (or angle) with $|Z| > 2$ is considered an outlier worth inspection. RMSZ is the root-mean-square of all Z scores of the bond lengths (or angles).

Mol	Type	Chain	Res	Link	Bond lengths			Bond angles		
					Counts	RMSZ	# Z > 2	Counts	RMSZ	# Z > 2
2	CYC	A	701	1,4	36,46,46	3.23	10 (27%)	44,67,67	4.32	23 (52%)
3	3CX	A	702	-	15,15,15	0.82	0	17,20,20	3.83	3 (17%)

In the following table, the Chirals column lists the number of chiral outliers, the number of chiral centers analysed, the number of these observed in the model and the number defined in the Chemical Component Dictionary. Similar counts are reported in the Torsion and Rings columns. '-' means no outliers of that kind were identified.

Mol	Type	Chain	Res	Link	Chirals	Torsions	Rings
2	CYC	A	701	1,4	-	0/17/74/74	0/4/4/4
3	3CX	A	702	-	-	0/10/18/18	0/1/1/1

All (10) bond length outliers are listed below:

Mol	Chain	Res	Type	Atoms	Z	Observed(Å)	Ideal(Å)
2	A	701	CYC	C1D-CHD	2.18	1.49	1.40
2	A	701	CYC	C1B-NB	2.71	1.42	1.37
2	A	701	CYC	C4A-C3A	2.80	1.51	1.45
2	A	701	CYC	CHB-C1B	3.24	1.45	1.38
2	A	701	CYC	OB-C4B	3.59	1.30	1.23
2	A	701	CYC	C1B-C2B	4.82	1.53	1.45
2	A	701	CYC	C3B-C2B	5.03	1.47	1.36
2	A	701	CYC	C2A-C3A	5.13	1.47	1.36
2	A	701	CYC	CHB-C4A	5.52	1.53	1.40
2	A	701	CYC	CHA-C1A	14.00	1.47	1.35

All (26) bond angle outliers are listed below:

Mol	Chain	Res	Type	Atoms	Z	Observed(°)	Ideal(°)
3	A	702	3CX	OAB-SAO-CAK	-10.30	94.70	106.94
2	A	701	CYC	CHB-C1B-NB	-8.04	108.67	126.06
2	A	701	CYC	C1B-NB-C4B	-7.59	100.70	110.68
2	A	701	CYC	OB-C4B-C3B	-7.20	120.07	128.10
2	A	701	CYC	C1B-C2B-C3B	-6.61	100.90	107.83
2	A	701	CYC	C4B-C3B-C2B	-5.73	104.72	108.02
2	A	701	CYC	C1A-C2A-C3A	-5.28	100.92	106.80
2	A	701	CYC	CHA-C1A-NA	-4.29	122.64	128.82
2	A	701	CYC	CBD-CAD-C3D	-4.04	104.76	112.48
2	A	701	CYC	CHB-C4A-C3A	-3.53	115.74	124.92
2	A	701	CYC	CMC-C2C-C1C	-2.63	106.90	112.43
2	A	701	CYC	CMA-C3A-C2A	-2.02	120.56	126.11
3	A	702	3CX	CAM-CAJ-NAL	2.33	118.65	112.26
2	A	701	CYC	C4D-CHA-C1A	2.45	131.74	128.81
2	A	701	CYC	C2C-C1C-NC	2.90	110.83	108.27
2	A	701	CYC	CAA-C2A-C1A	3.15	130.60	125.00
2	A	701	CYC	CHB-C4A-NA	3.73	132.82	124.95
2	A	701	CYC	CHB-C1B-C2B	3.89	134.78	126.94
2	A	701	CYC	C2A-C1A-NA	3.91	115.90	110.00
2	A	701	CYC	C3C-C4C-NC	4.50	112.46	108.11
2	A	701	CYC	CMA-C3A-C4A	4.97	132.74	125.05
2	A	701	CYC	C2B-C1B-NB	6.28	116.36	107.02
2	A	701	CYC	CAB-C3B-C4B	8.53	128.66	121.52

Continued on next page...

Continued from previous page...

Mol	Chain	Res	Type	Atoms	Z	Observed(°)	Ideal(°)
2	A	701	CYC	CMB-C2B-C1B	9.08	135.69	124.17
3	A	702	3CX	OAA-SAO-CAK	10.91	119.91	106.94
2	A	701	CYC	C3B-C4B-NB	12.56	117.29	106.75

There are no chirality outliers.

There are no torsion outliers.

There are no ring outliers.

No monomer is involved in short contacts.

5.7 Other polymers [i](#)

There are no such residues in this entry.

5.8 Polymer linkage issues [i](#)

There are no chain breaks in this entry.

6 Fit of model and data [i](#)

6.1 Protein, DNA and RNA chains [i](#)

In the following table, the column labelled ‘#RSRZ> 2’ contains the number (and percentage) of RSRZ outliers, followed by percent RSRZ outliers for the chain as percentile scores relative to all X-ray entries and entries of similar resolution. The OWAB column contains the minimum, median, 95th percentile and maximum values of the occupancy-weighted average B-factor per residue. The column labelled ‘Q< 0.9’ lists the number of (and percentage) of residues with an average occupancy less than 0.9.

Mol	Chain	Analysed	<RSRZ>	#RSRZ>2	OWAB(Å ²)	Q<0.9
1	A	158/215 (73%)	-0.23	1 (0%) 89 90	24, 35, 60, 89	0

All (1) RSRZ outliers are listed below:

Mol	Chain	Res	Type	RSRZ
1	A	440	SER	2.4

6.2 Non-standard residues in protein, DNA, RNA chains [i](#)

There are no non-standard protein/DNA/RNA residues in this entry.

6.3 Carbohydrates [i](#)

There are no carbohydrates in this entry.

6.4 Ligands [i](#)

In the following table, the Atoms column lists the number of modelled atoms in the group and the number defined in the chemical component dictionary. The B-factors column lists the minimum, median, 95th percentile and maximum values of B factors of atoms in the group. The column labelled ‘Q< 0.9’ lists the number of atoms with occupancy less than 0.9.

Mol	Type	Chain	Res	Atoms	RSCC	RSR	B-factors(Å ²)	Q<0.9
4	NA	A	704	1/1	0.91	0.10	52,52,52,52	0
2	CYC	A	701	43/43	0.93	0.10	22,26,44,47	0
3	3CX	A	702	15/15	0.97	0.10	28,33,43,44	0
4	NA	A	705	1/1	0.99	0.14	26,26,26,26	0
4	NA	A	703	1/1	0.99	0.13	40,40,40,40	0

6.5 Other polymers [i](#)

There are no such residues in this entry.