



Full wwPDB X-ray Structure Validation Report ⓘ

Feb 3, 2024 – 03:40 PM EST

PDB ID : 1M9M
Title : human endothelial nitric oxide synthase with 6-nitroindazole bound
Authors : Rosenfeld, R.J.; Garcin, E.D.; Panda, K.; Andersson, G.; Aberg, A.; Wallace, A.V.; Stuehr, D.J.; Tainer, J.A.; Getzoff, E.D.
Deposited on : 2002-07-29
Resolution : 1.96 Å(reported)

This is a Full wwPDB X-ray Structure Validation Report for a publicly released PDB entry.

We welcome your comments at validation@mail.wwpdb.org

A user guide is available at

<https://www.wwpdb.org/validation/2017/XrayValidationReportHelp>

with specific help available everywhere you see the ⓘ symbol.

The types of validation reports are described at

<http://www.wwpdb.org/validation/2017/FAQs#types>.

The following versions of software and data (see [references ⓘ](#)) were used in the production of this report:

MolProbity : 4.02b-467
Mogul : 1.8.5 (274361), CSD as541be (2020)
Xtrriage (Phenix) : **NOT EXECUTED**
EDS : **NOT EXECUTED**
buster-report : 1.1.7 (2018)
Percentile statistics : 20191225.v01 (using entries in the PDB archive December 25th 2019)
Ideal geometry (proteins) : Engh & Huber (2001)
Ideal geometry (DNA, RNA) : Parkinson et al. (1996)
Validation Pipeline (wwPDB-VP) : 2.36

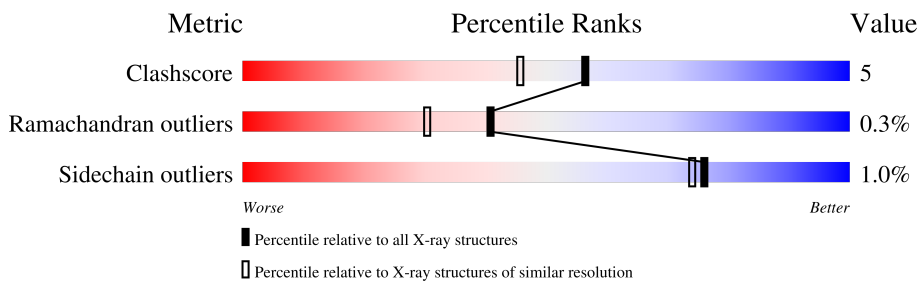
1 Overall quality at a glance

The following experimental techniques were used to determine the structure:

X-RAY DIFFRACTION

The reported resolution of this entry is 1.96 Å.

Percentile scores (ranging between 0-100) for global validation metrics of the entry are shown in the following graphic. The table shows the number of entries on which the scores are based.



Metric	Whole archive (#Entries)	Similar resolution (#Entries, resolution range(Å))
Clashscore	141614	2705 (1.96-1.96)
Ramachandran outliers	138981	2678 (1.96-1.96)
Sidechain outliers	138945	2678 (1.96-1.96)

The table below summarises the geometric issues observed across the polymeric chains and their fit to the electron density. The red, orange, yellow and green segments of the lower bar indicate the fraction of residues that contain outliers for ≥ 3 , 2, 1 and 0 types of geometric quality criteria respectively. A grey segment represents the fraction of residues that are not modelled. The numeric value for each fraction is indicated below the corresponding segment, with a dot representing fractions $\leq 5\%$.

Note EDS was not executed.

Mol	Chain	Length	Quality of chain
1	A	415	
1	B	415	

The following table lists non-polymeric compounds, carbohydrate monomers and non-standard residues in protein, DNA, RNA chains that are outliers for geometric or electron-density-fit criteria:

Mol	Type	Chain	Res	Chirality	Geometry	Clashes	Electron density
6	IPA	B	600	-	-	X	-

2 Entry composition

There are 8 unique types of molecules in this entry. The entry contains 6915 atoms, of which 0 are hydrogens and 0 are deuteriums.

In the tables below, the ZeroOcc column contains the number of atoms modelled with zero occupancy, the AltConf column contains the number of residues with at least one atom in alternate conformation and the Trace column contains the number of residues modelled with at most 2 atoms.

- Molecule 1 is a protein called endothelial Nitric-oxide synthase.

Mol	Chain	Residues	Atoms					ZeroOcc	AltConf	Trace
			Total	C	N	O	S			
1	A	400	3178	2026	559	577	16	0	0	0
1	B	400	3176	2025	556	579	16	0	0	0

- Molecule 2 is ZINC ION (three-letter code: ZN) (formula: Zn).

Mol	Chain	Residues	Atoms		ZeroOcc	AltConf
2	A	1	Total	Zn	0	0
			1	1		

- Molecule 3 is SODIUM ION (three-letter code: NA) (formula: Na).

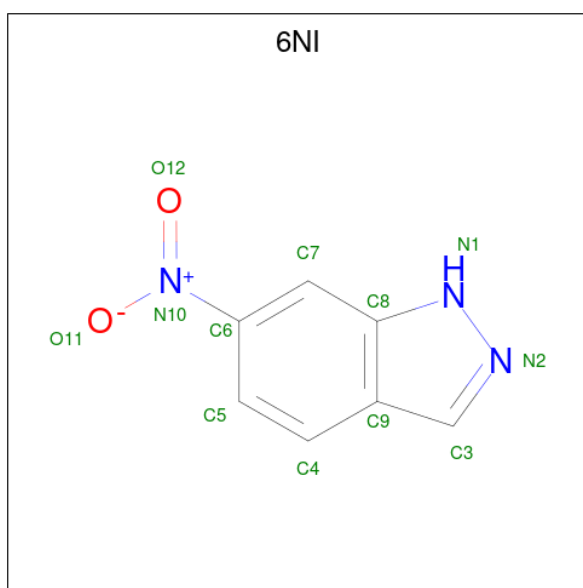
Mol	Chain	Residues	Atoms		ZeroOcc	AltConf
3	A	1	Total	Na	0	0
			1	1		

- Molecule 4 is PROTOPORPHYRIN IX CONTAINING FE (three-letter code: HEM) (formula: C₃₄H₃₂FeN₄O₄).



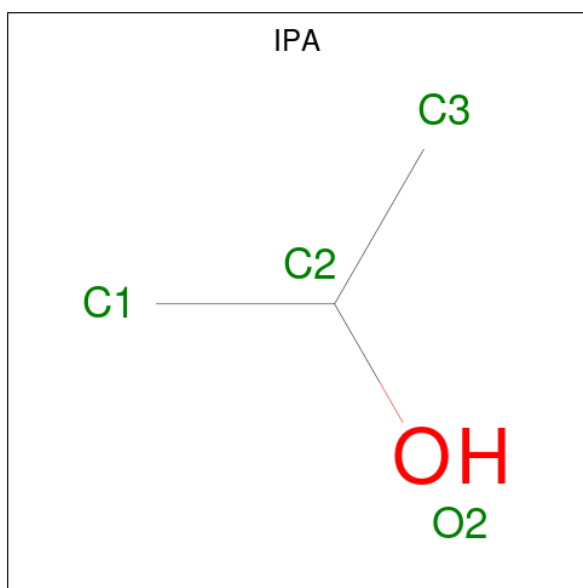
Mol	Chain	Residues	Atoms				ZeroOcc	AltConf	
4	A	1	Total	C	Fe	N	O	0	0
			43	34	1	4	4		
4	B	1	Total	C	Fe	N	O	0	0
			43	34	1	4	4		

- Molecule 5 is 6-NITROINDAZOLE (three-letter code: 6NI) (formula: $C_7H_5N_3O_2$).



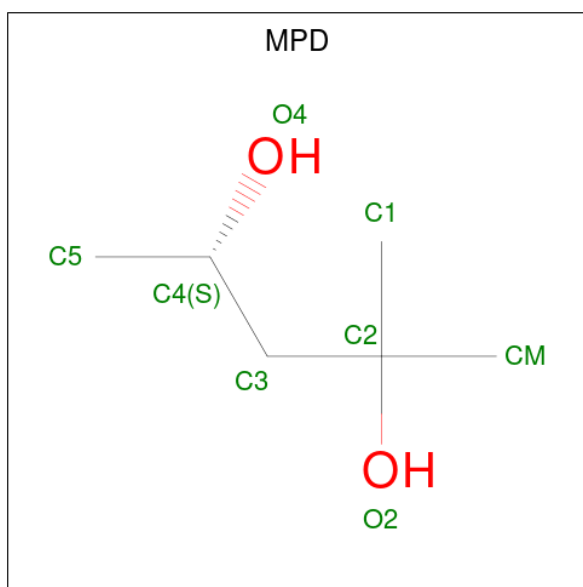
Mol	Chain	Residues	Atoms				ZeroOcc	AltConf
5	A	1	Total	C	N	O	1	0
			12	7	3	2		
5	B	1	Total	C	N	O	1	0
			12	7	3	2		

- Molecule 6 is ISOPROPYL ALCOHOL (three-letter code: IPA) (formula: C_3H_8O).



Mol	Chain	Residues	Atoms			ZeroOcc	AltConf
6	A	1	Total	C	O	0	0
			4	3	1		
6	B	1	Total	C	O	0	0
			4	3	1		
6	B	1	Total	C	O	0	0
			4	3	1		

- Molecule 7 is (4S)-2-METHYL-2,4-PENTANEDIOL (three-letter code: MPD) (formula: $C_6H_{14}O_2$).



Mol	Chain	Residues	Atoms	ZeroOcc	AltConf
7	A	1	Total C O 8 6 2	0	0
7	A	1	Total C O 8 6 2	0	0
7	A	1	Total C O 8 6 2	0	0

- Molecule 8 is water.

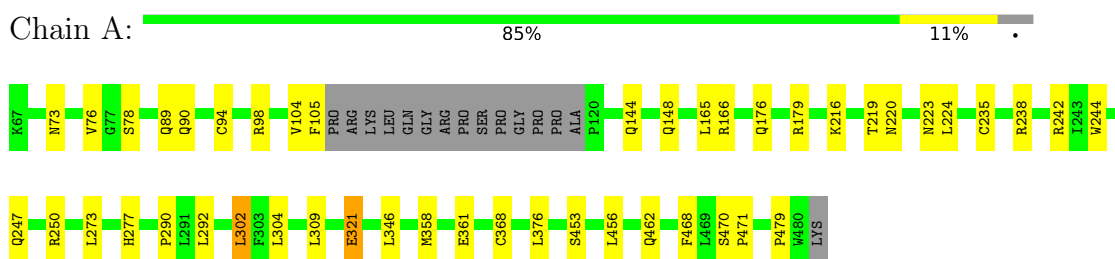
Mol	Chain	Residues	Atoms	ZeroOcc	AltConf
8	A	214	Total O 214 214	0	0
8	B	199	Total O 199 199	0	0

3 Residue-property plots [i](#)

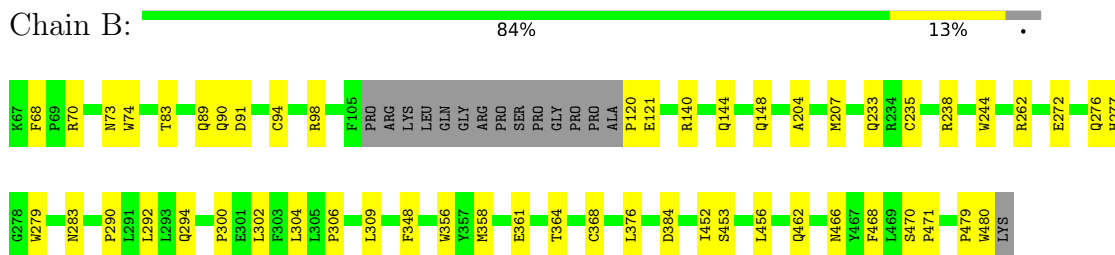
These plots are drawn for all protein, RNA, DNA and oligosaccharide chains in the entry. The first graphic for a chain summarises the proportions of the various outlier classes displayed in the second graphic. The second graphic shows the sequence view annotated by issues in geometry. Residues are color-coded according to the number of geometric quality criteria for which they contain at least one outlier: green = 0, yellow = 1, orange = 2 and red = 3 or more. Stretches of 2 or more consecutive residues without any outlier are shown as a green connector. Residues present in the sample, but not in the model, are shown in grey.

Note EDS was not executed.

- Molecule 1: endothelial Nitric-oxide synthase



- Molecule 1: endothelial Nitric-oxide synthase



4 Data and refinement statistics

Xtrriage (Phenix) and EDS were not executed - this section is therefore incomplete.

Property	Value	Source
Space group	P 21 21 21	Depositor
Cell constants a, b, c, α , β , γ	69.76Å 90.78Å 155.55Å 90.00° 90.00° 90.00°	Depositor
Resolution (Å)	45.03 – 1.96	Depositor
% Data completeness (in resolution range)	96.7 (45.03-1.96)	Depositor
R_{merge}	0.05	Depositor
R_{sym}	0.05	Depositor
Refinement program	CNS	Depositor
R, R_{free}	0.193 , 0.223	Depositor
Estimated twinning fraction	No twinning to report.	Xtrriage
Total number of atoms	6915	wwPDB-VP
Average B, all atoms (Å ²)	39.0	wwPDB-VP

5 Model quality [i](#)

5.1 Standard geometry [i](#)

Bond lengths and bond angles in the following residue types are not validated in this section: NA, ZN, MPD, IPA, HEM, 6NI

The Z score for a bond length (or angle) is the number of standard deviations the observed value is removed from the expected value. A bond length (or angle) with $|Z| > 5$ is considered an outlier worth inspection. RMSZ is the root-mean-square of all Z scores of the bond lengths (or angles).

Mol	Chain	Bond lengths		Bond angles	
		RMSZ	# Z >5	RMSZ	# Z >5
1	A	0.33	0/3269	0.59	1/4457 (0.0%)
1	B	0.32	0/3267	0.57	1/4455 (0.0%)
All	All	0.33	0/6536	0.58	2/8912 (0.0%)

There are no bond length outliers.

All (2) bond angle outliers are listed below:

Mol	Chain	Res	Type	Atoms	Z	Observed(°)	Ideal(°)
1	A	358	MET	N-CA-C	-5.43	96.35	111.00
1	B	358	MET	N-CA-C	-5.19	96.98	111.00

There are no chirality outliers.

There are no planarity outliers.

5.2 Too-close contacts [i](#)

In the following table, the Non-H and H(model) columns list the number of non-hydrogen atoms and hydrogen atoms in the chain respectively. The H(added) column lists the number of hydrogen atoms added and optimized by MolProbity. The Clashes column lists the number of clashes within the asymmetric unit, whereas Symm-Clashes lists symmetry-related clashes.

Mol	Chain	Non-H	H(model)	H(added)	Clashes	Symm-Clashes
1	A	3178	0	3070	27	0
1	B	3176	0	3063	32	0
2	A	1	0	0	0	0
3	A	1	0	0	0	0
4	A	43	0	30	0	0
4	B	43	0	30	1	0
5	A	12	0	5	1	0

Continued on next page...

Continued from previous page...

Mol	Chain	Non-H	H(model)	H(added)	Clashes	Symm-Clashes
5	B	12	0	5	1	0
6	A	4	0	8	0	0
6	B	8	0	16	5	0
7	A	24	0	42	5	0
8	A	214	0	0	2	0
8	B	199	0	0	6	0
All	All	6915	0	6269	64	0

The all-atom clashscore is defined as the number of clashes found per 1000 atoms (including hydrogen atoms). The all-atom clashscore for this structure is 5.

All (64) close contacts within the same asymmetric unit are listed below, sorted by their clash magnitude.

Atom-1	Atom-2	Interatomic distance (Å)	Clash overlap (Å)
1:B:361:GLU:HG3	5:B:907:6NI:H31	1.37	1.00
1:A:361:GLU:HG3	5:A:906:6NI:H31	1.44	1.00
1:A:292:LEU:HD13	1:A:302:LEU:HD13	1.51	0.91
1:B:144:GLN:HE21	1:B:148:GLN:HG3	1.40	0.86
1:B:235:CYS:SG	1:B:238:ARG:HD3	2.18	0.84
1:B:290:PRO:HB3	1:B:304:LEU:HD23	1.64	0.80
1:B:356:TRP:HE1	6:B:600:IPA:C3	2.05	0.70
6:B:601:IPA:H2	8:B:1091:HOH:O	1.92	0.69
1:B:356:TRP:HE1	6:B:600:IPA:H32	1.57	0.68
1:B:262:ARG:HD3	1:B:283:ASN:O	1.97	0.64
1:B:368:CYS:SG	1:B:376:LEU:HD13	2.38	0.64
1:A:453:SER:HB3	1:A:456:LEU:HD12	1.80	0.63
1:A:216:LYS:HG3	1:A:309:LEU:HD22	1.82	0.62
1:A:104:VAL:CG2	7:A:605:MPD:HM2	2.30	0.62
1:B:453:SER:HB3	1:B:456:LEU:HD12	1.81	0.61
1:B:90:GLN:HB3	1:B:468:PHE:CD2	2.35	0.60
1:A:73:ASN:HD22	1:A:462:GLN:NE2	2.00	0.59
1:B:279:TRP:HB2	1:B:302:LEU:HD21	1.86	0.58
1:B:244:TRP:HE1	1:B:294:GLN:NE2	2.04	0.55
1:B:73:ASN:HD22	1:B:462:GLN:NE2	2.05	0.55
1:A:144:GLN:O	1:A:148:GLN:HG2	2.08	0.54
1:A:94:CYS:HB3	1:B:94:CYS:HB3	1.91	0.53
4:B:901:HEM:HBB2	4:B:901:HEM:HHC	1.90	0.53
1:B:244:TRP:HB2	1:B:292:LEU:HB3	1.91	0.53
1:B:376:LEU:HB2	8:B:950:HOH:O	2.08	0.52
6:B:600:IPA:H2	8:B:1092:HOH:O	2.11	0.51
1:A:166:ARG:HG2	8:A:1150:HOH:O	2.10	0.50

Continued on next page...

Continued from previous page...

Atom-1	Atom-2	Interatomic distance (Å)	Clash overlap (Å)
1:A:244:TRP:HB2	1:A:292:LEU:HB3	1.93	0.50
1:B:306:PRO:HD2	1:B:309:LEU:HD12	1.95	0.49
1:B:277:HIS:CE1	1:B:300:PRO:HG2	2.48	0.49
1:A:321:GLU:H	1:A:321:GLU:CD	2.15	0.49
7:A:603:MPD:H32	8:B:1090:HOH:O	2.13	0.48
1:B:290:PRO:HB3	1:B:304:LEU:CD2	2.40	0.47
1:A:76:VAL:HG23	1:A:78:SER:H	1.79	0.47
1:B:233:GLN:HB3	1:B:348:PHE:CE2	2.49	0.47
1:A:376:LEU:HB2	8:A:1007:HOH:O	2.15	0.47
1:B:140:ARG:NH1	8:B:1065:HOH:O	2.48	0.47
1:A:368:CYS:SG	1:A:376:LEU:HD13	2.55	0.47
1:A:90:GLN:H	1:A:468:PHE:HD2	1.63	0.45
1:B:90:GLN:HG2	1:B:91:ASP:N	2.31	0.45
7:A:603:MPD:H53	8:B:1090:HOH:O	2.15	0.45
1:A:273:LEU:O	1:A:277:HIS:HD2	2.00	0.45
1:B:272:GLU:O	1:B:276:GLN:HG3	2.15	0.45
1:B:364:THR:HG21	1:B:452:ILE:HG23	1.99	0.44
1:A:235:CYS:HB2	1:A:238:ARG:HG2	2.00	0.43
1:A:165:LEU:HG	1:A:346:LEU:HD12	2.00	0.43
7:A:603:MPD:O4	7:A:603:MPD:HM1	2.17	0.43
7:A:603:MPD:O4	7:A:603:MPD:CM	2.66	0.43
1:A:219:THR:HA	1:A:224:LEU:HD22	2.01	0.42
1:A:220:ASN:HB3	1:A:223:ASN:O	2.20	0.42
1:B:204:ALA:HA	1:B:207:MET:HE3	2.01	0.42
1:A:290:PRO:HB3	1:A:304:LEU:HD23	2.01	0.42
1:A:470:SER:HA	1:A:471:PRO:C	2.40	0.42
1:B:470:SER:HA	1:B:471:PRO:C	2.40	0.42
1:A:90:GLN:HB2	1:A:468:PHE:CD2	2.54	0.41
1:B:364:THR:O	1:B:368:CYS:HB2	2.20	0.41
1:A:242:ARG:NH2	1:A:479:PRO:HD3	2.36	0.41
1:A:176:GLN:HE22	1:A:179:ARG:HH11	1.69	0.41
1:B:68:PHE:CD2	1:B:83:THR:HA	2.56	0.41
1:B:479:PRO:HG2	1:B:480:TRP:CE3	2.56	0.41
1:B:120:PRO:HG2	1:B:121:GLU:H	1.85	0.41
1:A:105:PHE:HE1	1:B:74:TRP:HH2	1.68	0.41
1:B:356:TRP:HE1	6:B:600:IPA:H31	1.83	0.41
1:A:247:GLN:HB2	1:A:250:ARG:CG	2.52	0.40

There are no symmetry-related clashes.

5.3 Torsion angles [i](#)

5.3.1 Protein backbone [i](#)

In the following table, the Percentiles column shows the percent Ramachandran outliers of the chain as a percentile score with respect to all X-ray entries followed by that with respect to entries of similar resolution.

The Analysed column shows the number of residues for which the backbone conformation was analysed, and the total number of residues.

Mol	Chain	Analysed	Favoured	Allowed	Outliers	Percentiles	
1	A	396/415 (95%)	387 (98%)	8 (2%)	1 (0%)	41	30
1	B	396/415 (95%)	385 (97%)	10 (2%)	1 (0%)	41	30
All	All	792/830 (95%)	772 (98%)	18 (2%)	2 (0%)	41	30

All (2) Ramachandran outliers are listed below:

Mol	Chain	Res	Type
1	B	89	GLN
1	A	89	GLN

5.3.2 Protein sidechains [i](#)

In the following table, the Percentiles column shows the percent sidechain outliers of the chain as a percentile score with respect to all X-ray entries followed by that with respect to entries of similar resolution.

The Analysed column shows the number of residues for which the sidechain conformation was analysed, and the total number of residues.

Mol	Chain	Analysed	Rotameric	Outliers	Percentiles	
1	A	336/352 (96%)	333 (99%)	3 (1%)	78	77
1	B	336/352 (96%)	332 (99%)	4 (1%)	71	68
All	All	672/704 (96%)	665 (99%)	7 (1%)	76	74

All (7) residues with a non-rotameric sidechain are listed below:

Mol	Chain	Res	Type
1	A	98	ARG
1	A	302	LEU
1	A	321	GLU
1	B	70	ARG

Continued on next page...

Continued from previous page...

Mol	Chain	Res	Type
1	B	98	ARG
1	B	384	ASP
1	B	466	ASN

Sometimes sidechains can be flipped to improve hydrogen bonding and reduce clashes. All (16) such sidechains are listed below:

Mol	Chain	Res	Type
1	A	133	GLN
1	A	176	GLN
1	A	189	GLN
1	A	233	GLN
1	A	277	HIS
1	A	462	GLN
1	A	466	ASN
1	B	126	GLN
1	B	133	GLN
1	B	144	GLN
1	B	148	GLN
1	B	233	GLN
1	B	277	HIS
1	B	294	GLN
1	B	462	GLN
1	B	466	ASN

5.3.3 RNA [i](#)

There are no RNA molecules in this entry.

5.4 Non-standard residues in protein, DNA, RNA chains [i](#)

There are no non-standard protein/DNA/RNA residues in this entry.

5.5 Carbohydrates [i](#)

There are no monosaccharides in this entry.

5.6 Ligand geometry [i](#)

Of 12 ligands modelled in this entry, 2 are monoatomic - leaving 10 for Mogul analysis.

In the following table, the Counts columns list the number of bonds (or angles) for which Mogul statistics could be retrieved, the number of bonds (or angles) that are observed in the model and the number of bonds (or angles) that are defined in the Chemical Component Dictionary. The Link column lists molecule types, if any, to which the group is linked. The Z score for a bond length (or angle) is the number of standard deviations the observed value is removed from the expected value. A bond length (or angle) with $|Z| > 2$ is considered an outlier worth inspection. RMSZ is the root-mean-square of all Z scores of the bond lengths (or angles).

Mol	Type	Chain	Res	Link	Bond lengths			Bond angles		
					Counts	RMSZ	# Z > 2	Counts	RMSZ	# Z > 2
6	IPA	B	601	-	3,3,3	0.44	0	3,3,3	0.39	0
7	MPD	A	604	-	7,7,7	0.43	0	9,10,10	0.48	0
6	IPA	B	600	-	3,3,3	0.43	0	3,3,3	0.40	0
4	HEM	A	901	1	41,50,50	1.32	6 (14%)	45,82,82	1.37	4 (8%)
4	HEM	B	901	1	41,50,50	1.33	4 (9%)	45,82,82	1.17	2 (4%)
7	MPD	A	603	-	7,7,7	0.54	0	9,10,10	0.46	0
5	6NI	B	907	-	10,13,13	3.89	5 (50%)	12,18,18	1.67	3 (25%)
6	IPA	A	602	-	3,3,3	0.41	0	3,3,3	0.39	0
7	MPD	A	605	-	7,7,7	0.47	0	9,10,10	0.43	0
5	6NI	A	906	-	10,13,13	4.01	5 (50%)	12,18,18	1.67	3 (25%)

In the following table, the Chirals column lists the number of chiral outliers, the number of chiral centers analysed, the number of these observed in the model and the number defined in the Chemical Component Dictionary. Similar counts are reported in the Torsion and Rings columns. '-' means no outliers of that kind were identified.

Mol	Type	Chain	Res	Link	Chirals	Torsions	Rings
7	MPD	A	604	-	-	0/5/5/5	-
4	HEM	A	901	1	-	1/12/54/54	-
7	MPD	A	603	-	-	0/5/5/5	-
4	HEM	B	901	1	-	5/12/54/54	-
5	6NI	B	907	-	-	2/2/4/4	0/2/2/2
7	MPD	A	605	-	-	2/5/5/5	-
5	6NI	A	906	-	-	2/2/4/4	0/2/2/2

All (20) bond length outliers are listed below:

Mol	Chain	Res	Type	Atoms	Z	Observed(Å)	Ideal(Å)
5	A	906	6NI	O12-N10	8.15	1.36	1.22
5	B	907	6NI	O12-N10	7.65	1.35	1.22
5	B	907	6NI	C4-C5	6.80	1.50	1.36
5	A	906	6NI	C4-C5	6.78	1.50	1.36
5	A	906	6NI	C4-C9	4.53	1.52	1.41

Continued on next page...

Continued from previous page...

Mol	Chain	Res	Type	Atoms	Z	Observed(Å)	Ideal(Å)
5	B	907	6NI	C4-C9	4.41	1.52	1.41
5	A	906	6NI	C6-N10	-3.84	1.35	1.45
5	B	907	6NI	C6-N10	-3.79	1.36	1.45
4	B	901	HEM	C3C-CAC	-3.62	1.40	1.47
4	A	901	HEM	C3C-CAC	-3.47	1.40	1.47
4	A	901	HEM	CAB-C3B	-2.76	1.39	1.47
5	B	907	6NI	C7-C6	2.64	1.43	1.36
5	A	906	6NI	C7-C6	2.63	1.42	1.36
4	B	901	HEM	CHB-C1B	2.61	1.41	1.35
4	B	901	HEM	CAB-C3B	-2.55	1.40	1.47
4	A	901	HEM	C1B-NB	-2.54	1.35	1.40
4	B	901	HEM	C3C-C2C	-2.27	1.37	1.40
4	A	901	HEM	CHB-C1B	2.26	1.40	1.35
4	A	901	HEM	C3C-C2C	-2.15	1.37	1.40
4	A	901	HEM	C4D-ND	-2.02	1.36	1.40

All (12) bond angle outliers are listed below:

Mol	Chain	Res	Type	Atoms	Z	Observed(°)	Ideal(°)
4	A	901	HEM	C4B-CHC-C1C	4.69	128.75	122.56
4	B	901	HEM	C4B-CHC-C1C	4.15	128.04	122.56
4	A	901	HEM	CBA-CAA-C2A	4.03	119.50	112.62
5	B	907	6NI	C7-C8-N1	4.00	137.00	130.51
5	A	906	6NI	C7-C8-N1	3.84	136.74	130.51
5	A	906	6NI	C5-C4-C9	-2.65	116.71	120.82
5	B	907	6NI	C5-C4-C9	-2.60	116.80	120.82
4	A	901	HEM	CMA-C3A-C4A	-2.46	124.68	128.46
4	B	901	HEM	CMC-C2C-C3C	2.21	128.81	124.68
5	A	906	6NI	C6-C7-C8	2.16	120.62	118.53
5	B	907	6NI	C6-C7-C8	2.11	120.57	118.53
4	A	901	HEM	CMC-C2C-C3C	2.02	128.45	124.68

There are no chirality outliers.

All (12) torsion outliers are listed below:

Mol	Chain	Res	Type	Atoms
4	B	901	HEM	C1A-C2A-CAA-CBA
4	B	901	HEM	C3A-C2A-CAA-CBA
4	B	901	HEM	C2A-CAA-CBA-CGA
5	A	906	6NI	C7-C6-N10-O12
5	A	906	6NI	C5-C6-N10-O12
5	B	907	6NI	C7-C6-N10-O12

Continued on next page...

Continued from previous page...

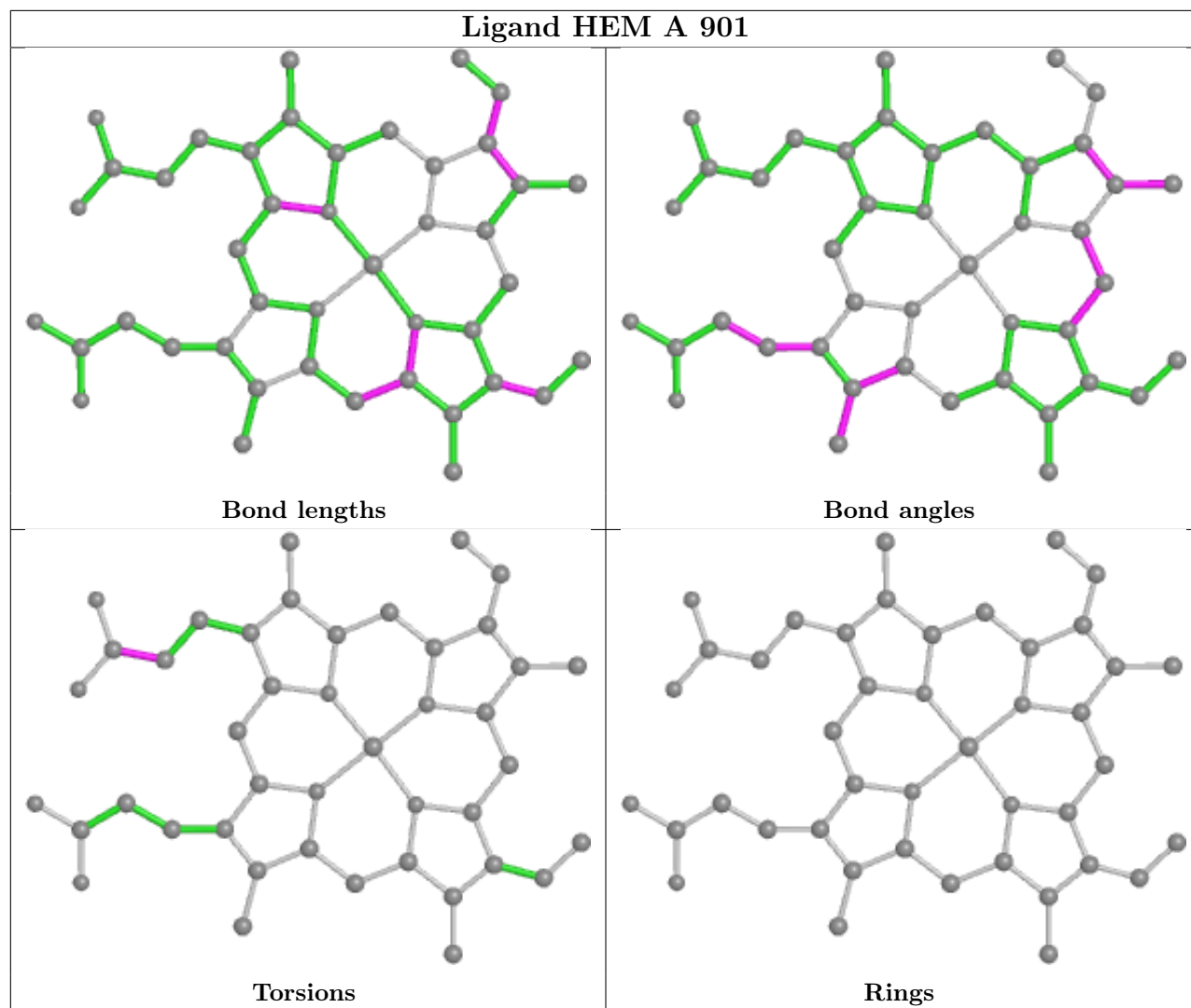
Mol	Chain	Res	Type	Atoms
5	B	907	6NI	C5-C6-N10-O12
7	A	605	MPD	CM-C2-C3-C4
4	B	901	HEM	CAA-CBA-CGA-O1A
4	B	901	HEM	CAA-CBA-CGA-O2A
7	A	605	MPD	O2-C2-C3-C4
4	A	901	HEM	CAD-CBD-CGD-O2D

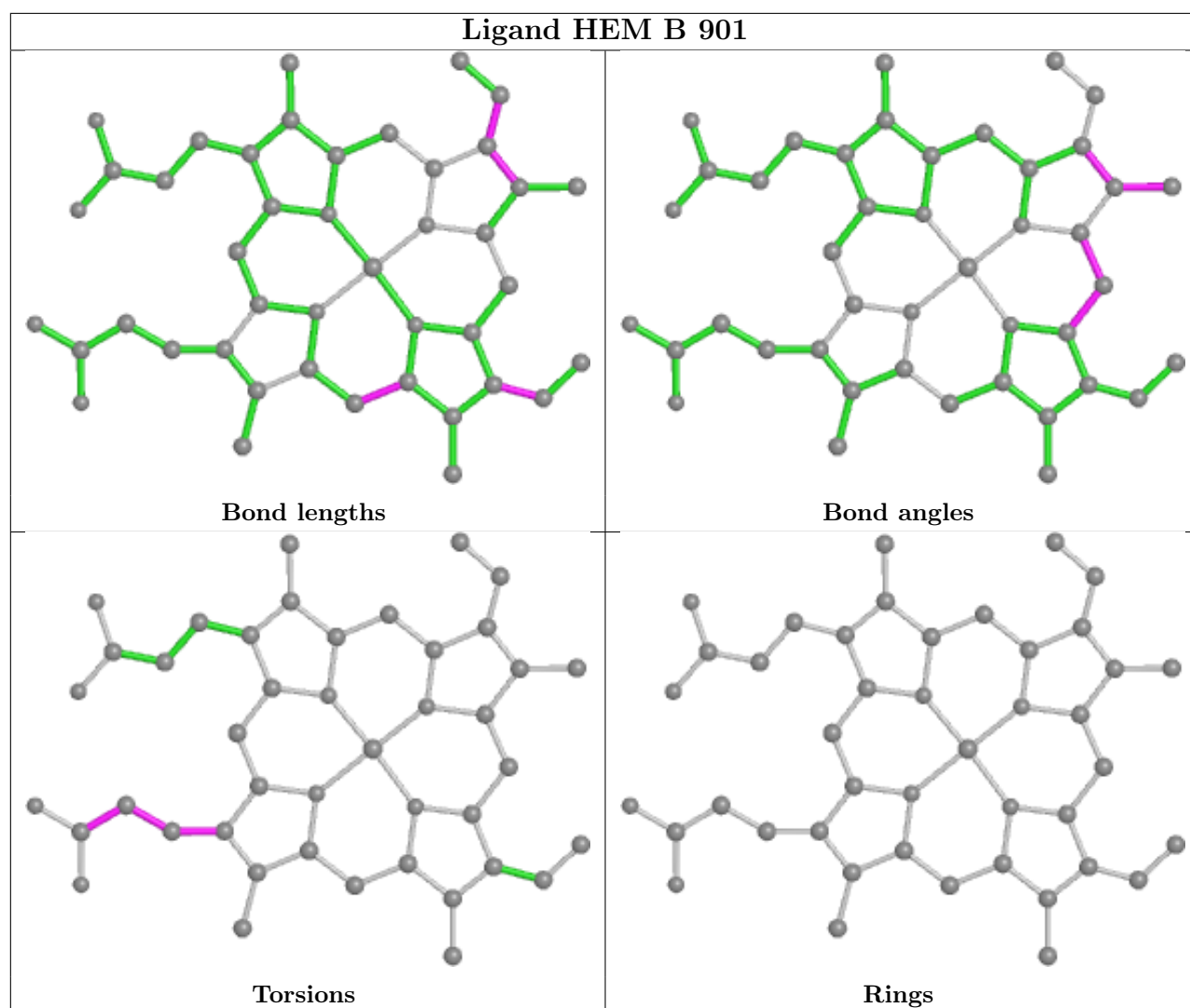
There are no ring outliers.

7 monomers are involved in 13 short contacts:

Mol	Chain	Res	Type	Clashes	Symm-Clashes
6	B	601	IPA	1	0
6	B	600	IPA	4	0
4	B	901	HEM	1	0
7	A	603	MPD	4	0
5	B	907	6NI	1	0
7	A	605	MPD	1	0
5	A	906	6NI	1	0

The following is a two-dimensional graphical depiction of Mogul quality analysis of bond lengths, bond angles, torsion angles, and ring geometry for all instances of the Ligand of Interest. In addition, ligands with molecular weight > 250 and outliers as shown on the validation Tables will also be included. For torsion angles, if less than 5% of the Mogul distribution of torsion angles is within 10 degrees of the torsion angle in question, then that torsion angle is considered an outlier. Any bond that is central to one or more torsion angles identified as an outlier by Mogul will be highlighted in the graph. For rings, the root-mean-square deviation (RMSD) between the ring in question and similar rings identified by Mogul is calculated over all ring torsion angles. If the average RMSD is greater than 60 degrees and the minimal RMSD between the ring in question and any Mogul-identified rings is also greater than 60 degrees, then that ring is considered an outlier. The outliers are highlighted in purple. The color gray indicates Mogul did not find sufficient equivalents in the CSD to analyse the geometry.





5.7 Other polymers [i](#)

There are no such residues in this entry.

5.8 Polymer linkage issues [i](#)

There are no chain breaks in this entry.

6 Fit of model and data

6.1 Protein, DNA and RNA chains

EDS was not executed - this section is therefore empty.

6.2 Non-standard residues in protein, DNA, RNA chains

EDS was not executed - this section is therefore empty.

6.3 Carbohydrates

EDS was not executed - this section is therefore empty.

6.4 Ligands

EDS was not executed - this section is therefore empty.

6.5 Other polymers

EDS was not executed - this section is therefore empty.