



Full wwPDB NMR Structure Validation Report ⓘ

Nov 17, 2024 – 09:26 AM EST

PDB ID : 2M9J
BMRB ID : 19296
Title : NMR solution structure of Pin1 WW domain mutant 6-1g
Authors : Enck, S.; Chen, W.; Price, J.L.; Powers, E.T.; Wong, C.; Dyson, H.J.; Kelly, J.W.
Deposited on : 2013-06-10

This is a Full wwPDB NMR Structure Validation Report for a publicly released PDB entry.

We welcome your comments at validation@mail.wwpdb.org

A user guide is available at

<https://www.wwpdb.org/validation/2017/NMRValidationReportHelp>

with specific help available everywhere you see the ⓘ symbol.

The types of validation reports are described at

<http://www.wwpdb.org/validation/2017/FAQs#types>.

The following versions of software and data (see [references ⓘ](#)) were used in the production of this report:

MolProbity : 4.02b-467
Mogul : 2022.3.0, CSD as543be (2022)
Percentile statistics : 20231227.v01 (using entries in the PDB archive December 27th 2023)
wwPDB-RCI : v_1n_11_5_13_A (Berjanski et al., 2005)
PANAV : Wang et al. (2010)
wwPDB-ShiftChecker : v1.2
Ideal geometry (proteins) : Engh & Huber (2001)
Ideal geometry (DNA, RNA) : Parkinson et al. (1996)
Validation Pipeline (wwPDB-VP) : 2.39

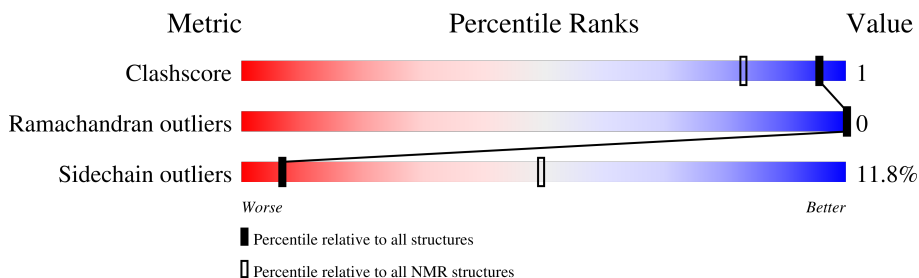
1 Overall quality at a glance

The following experimental techniques were used to determine the structure:

SOLUTION NMR

The overall completeness of chemical shifts assignment is 49%.

Percentile scores (ranging between 0-100) for global validation metrics of the entry are shown in the following graphic. The table shows the number of entries on which the scores are based.



Metric	Whole archive (#Entries)	NMR archive (#Entries)
Clashscore	210492	14027
Ramachandran outliers	207382	12486
Sidechain outliers	206894	12463

The table below summarises the geometric issues observed across the polymeric chains and their fit to the experimental data. The red, orange, yellow and green segments indicate the fraction of residues that contain outliers for ≥ 3 , 2, 1 and 0 types of geometric quality criteria. A cyan segment indicates the fraction of residues that are not part of the well-defined cores, and a grey segment represents the fraction of residues that are not modelled. The numeric value for each fraction is indicated below the corresponding segment, with a dot representing fractions $\leq 5\%$

Mol	Chain	Length	Quality of chain
1	A	34	

2 Ensemble composition and analysis

This entry contains 17 models. Model 7 is the overall representative, medoid model (most similar to other models). The authors have identified model 1 as representative, based on the following criterion: *lowest energy*.

The following residues are included in the computation of the global validation metrics.

Well-defined (core) protein residues			
Well-defined core	Residue range (total)	Backbone RMSD (Å)	Medoid model
1	A:6-A:31 (26)	0.28	7

Ill-defined regions of proteins are excluded from the global statistics.

Ligands and non-protein polymers are included in the analysis.

The models can be grouped into 2 clusters and 2 single-model clusters were found.

Cluster number	Models
1	4, 7, 8, 9, 10, 11, 12, 13, 16
2	1, 3, 5, 6, 15, 17
Single-model clusters	2; 14

3 Entry composition [i](#)

There are 2 unique types of molecules in this entry. The entry contains 583 atoms, of which 284 are hydrogens and 0 are deuteriums.

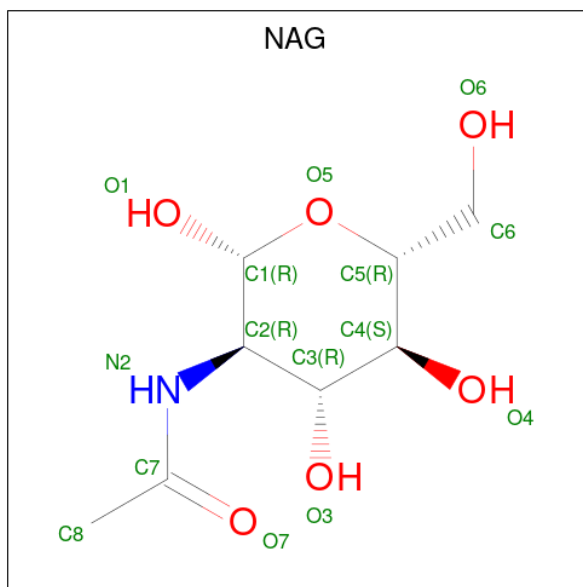
- Molecule 1 is a protein called Peptidyl-prolyl cis-trans isomerase NIMA-interacting 1.

Mol	Chain	Residues	Atoms					Trace	
			Total	C	H	N	O		S
1	A	34	555	182	270	52	50	1	0

There are 4 discrepancies between the modelled and reference sequences:

Chain	Residue	Modelled	Actual	Comment	Reference
A	11	PHE	SER	SEE REMARK 999	UNP Q13526
A	14	ASN	SER	SEE REMARK 999	UNP Q13526
A	16	THR	ARG	SEE REMARK 999	UNP Q13526
A	29	PHE	TRP	SEE REMARK 999	UNP Q13526

- Molecule 2 is 2-acetamido-2-deoxy-beta-D-glucopyranose (three-letter code: NAG) (formula: $C_8H_{15}NO_6$).



Mol	Chain	Residues	Atoms				
			Total	C	H	N	O
2	A	1	28	8	14	1	5

4 Residue-property plots

4.1 Average score per residue in the NMR ensemble

These plots are provided for all protein, RNA, DNA and oligosaccharide chains in the entry. The first graphic is the same as shown in the summary in section 1 of this report. The second graphic shows the sequence where residues are colour-coded according to the number of geometric quality criteria for which they contain at least one outlier: green = 0, yellow = 1, orange = 2 and red = 3 or more. Stretches of 2 or more consecutive residues without any outliers are shown as green connectors. Residues which are classified as ill-defined in the NMR ensemble, are shown in cyan with an underline colour-coded according to the previous scheme. Residues which were present in the experimental sample, but not modelled in the final structure are shown in grey.

- Molecule 1: Peptidyl-prolyl cis-trans isomerase NIMA-interacting 1



4.2 Scores per residue for each member of the ensemble

Colouring as in section 4.1 above.

4.2.1 Score per residue for model 1

- Molecule 1: Peptidyl-prolyl cis-trans isomerase NIMA-interacting 1



4.2.2 Score per residue for model 2

- Molecule 1: Peptidyl-prolyl cis-trans isomerase NIMA-interacting 1



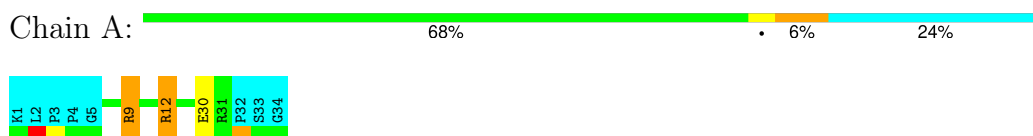
4.2.3 Score per residue for model 3

- Molecule 1: Peptidyl-prolyl cis-trans isomerase NIMA-interacting 1



4.2.4 Score per residue for model 4

- Molecule 1: Peptidyl-prolyl cis-trans isomerase NIMA-interacting 1



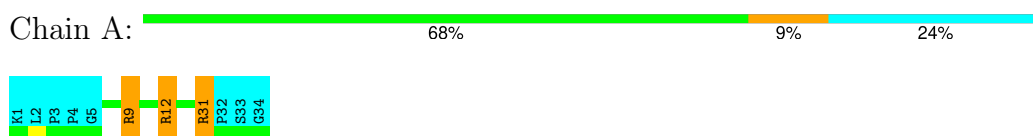
4.2.5 Score per residue for model 5

- Molecule 1: Peptidyl-prolyl cis-trans isomerase NIMA-interacting 1



4.2.6 Score per residue for model 6

- Molecule 1: Peptidyl-prolyl cis-trans isomerase NIMA-interacting 1



4.2.7 Score per residue for model 7 (medoid)

- Molecule 1: Peptidyl-prolyl cis-trans isomerase NIMA-interacting 1



4.2.8 Score per residue for model 8

- Molecule 1: Peptidyl-prolyl cis-trans isomerase NIMA-interacting 1



4.2.9 Score per residue for model 9

- Molecule 1: Peptidyl-prolyl cis-trans isomerase NIMA-interacting 1



4.2.10 Score per residue for model 10

- Molecule 1: Peptidyl-prolyl cis-trans isomerase NIMA-interacting 1



4.2.11 Score per residue for model 11

- Molecule 1: Peptidyl-prolyl cis-trans isomerase NIMA-interacting 1



4.2.12 Score per residue for model 12

- Molecule 1: Peptidyl-prolyl cis-trans isomerase NIMA-interacting 1



4.2.13 Score per residue for model 13

- Molecule 1: Peptidyl-prolyl cis-trans isomerase NIMA-interacting 1



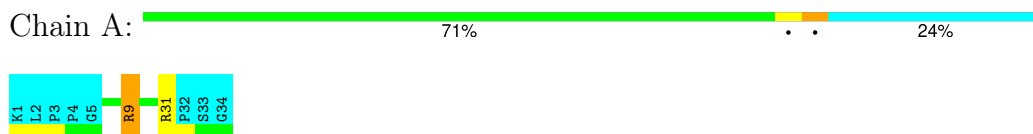
4.2.14 Score per residue for model 14

- Molecule 1: Peptidyl-prolyl cis-trans isomerase NIMA-interacting 1



4.2.15 Score per residue for model 15

- Molecule 1: Peptidyl-prolyl cis-trans isomerase NIMA-interacting 1



4.2.16 Score per residue for model 16

- Molecule 1: Peptidyl-prolyl cis-trans isomerase NIMA-interacting 1



4.2.17 Score per residue for model 17

- Molecule 1: Peptidyl-prolyl cis-trans isomerase NIMA-interacting 1



5 Refinement protocol and experimental data overview

The models were refined using the following method: *molecular dynamics*.

Of the 200 calculated structures, 17 were deposited, based on the following criterion: *structures with the lowest energy*.

The following table shows the software used for structure solution, optimisation and refinement.

Software name	Classification	Version
Amber	structure solution	
Amber	refinement	

The following table shows chemical shift validation statistics as aggregates over all chemical shift files. Detailed validation can be found in section 7 of this report.

Chemical shift file(s)	working_cs.cif
Number of chemical shift lists	1
Total number of shifts	251
Number of shifts mapped to atoms	250
Number of unparsed shifts	0
Number of shifts with mapping errors	1
Number of shifts with mapping warnings	0
Assignment completeness (well-defined parts)	49%

6 Model quality i

6.1 Standard geometry i

Bond lengths and bond angles in the following residue types are not validated in this section: NAG

The Z score for a bond length (or angle) is the number of standard deviations the observed value is removed from the expected value. A bond length (or angle) with $|Z| > 5$ is considered an outlier worth inspection. RMSZ is the (average) root-mean-square of all Z scores of the bond lengths (or angles).

Mol	Chain	Bond lengths		Bond angles	
		RMSZ	#Z>5	RMSZ	#Z>5
1	A	0.81±0.01	0±0/240 (0.0± 0.0%)	1.35±0.06	3±1/324 (0.8± 0.3%)
All	All	0.81	0/4080 (0.0%)	1.35	46/5508 (0.8%)

Chiral center outliers are detected by calculating the chiral volume of a chiral center and verifying if the center is modelled as a planar moiety or with the opposite hand. A planarity outlier is detected by checking planarity of atoms in a peptide group, atoms in a mainchain group or atoms of a sidechain that are expected to be planar.

Mol	Chain	Chirality	Planarity
1	A	0.0±0.0	1.0±0.8
All	All	0	17

There are no bond-length outliers.

All unique angle outliers are listed below. They are sorted according to the Z-score of the worst occurrence in the ensemble.

Mol	Chain	Res	Type	Atoms	Z	Observed(°)	Ideal(°)	Models	
								Worst	Total
1	A	9	ARG	NE-CZ-NH1	11.58	126.09	120.30	7	13
1	A	31	ARG	NE-CZ-NH1	9.44	125.02	120.30	8	12
1	A	31	ARG	NE-CZ-NH2	-8.88	115.86	120.30	1	3
1	A	12	ARG	NE-CZ-NH1	7.71	124.16	120.30	2	10
1	A	9	ARG	NE-CZ-NH2	-6.17	117.21	120.30	2	1
1	A	31	ARG	CD-NE-CZ	5.18	130.85	123.60	1	2
1	A	9	ARG	NH1-CZ-NH2	-5.17	113.72	119.40	10	4
1	A	9	ARG	CD-NE-CZ	5.04	130.66	123.60	2	1

There are no chirality outliers.

All unique planar outliers are listed below. They are sorted by the frequency of occurrence in the ensemble.

Mol	Chain	Res	Type	Group	Models (Total)
1	A	9	ARG	Sidechain	8
1	A	31	ARG	Sidechain	6
1	A	19	TYR	Sidechain	2
1	A	18	TYR	Sidechain	1

6.2 Too-close contacts [i](#)

In the following table, the Non-H and H(model) columns list the number of non-hydrogen atoms and hydrogen atoms in each chain respectively. The H(added) column lists the number of hydrogen atoms added and optimized by MolProbity. The Clashes column lists the number of clashes averaged over the ensemble.

Mol	Chain	Non-H	H(model)	H(added)	Clashes
1	A	232	212	212	0±1
2	A	14	14	13	0±0
All	All	4182	3842	3825	7

The all-atom clashscore is defined as the number of clashes found per 1000 atoms (including hydrogen atoms). The all-atom clashscore for this structure is 1.

All unique clashes are listed below, sorted by their clash magnitude.

Atom-1	Atom-2	Clash(Å)	Distance(Å)	Models	
				Worst	Total
1:A:11:PHE:CD1	2:A:101:NAG:H5	0.46	2.45	12	1
1:A:11:PHE:CE2	1:A:18:TYR:CD1	0.43	3.07	14	6

6.3 Torsion angles [i](#)

6.3.1 Protein backbone [i](#)

In the following table, the Percentiles column shows the percent Ramachandran outliers of the chain as a percentile score with respect to all PDB entries followed by that with respect to all NMR entries. The Analysed column shows the number of residues for which the backbone conformation was analysed and the total number of residues.

Mol	Chain	Analysed	Favoured	Allowed	Outliers	Percentiles	
1	A	26/34 (76%)	23±1 (87±3%)	3±1 (13±3%)	0±0 (0±0%)	100	100
All	All	442/578 (76%)	386 (87%)	56 (13%)	0 (0%)	100	100

There are no Ramachandran outliers.

6.3.2 Protein sidechains [i](#)

In the following table, the Percentiles column shows the percent sidechain outliers of the chain as a percentile score with respect to all PDB entries followed by that with respect to all NMR entries. The Analysed column shows the number of residues for which the sidechain conformation was analysed and the total number of residues.

Mol	Chain	Analysed	Rotameric	Outliers	Percentiles	
1	A	24/30 (80%)	21±1 (88±5%)	3±1 (12±5%)	7	49
All	All	408/510 (80%)	360 (88%)	48 (12%)	7	49

All 9 unique residues with a non-rotameric sidechain are listed below. They are sorted by the frequency of occurrence in the ensemble.

Mol	Chain	Res	Type	Models (Total)
1	A	31	ARG	13
1	A	12	ARG	10
1	A	30	GLU	8
1	A	9	ARG	6
1	A	8	LYS	6
1	A	28	GLN	2
1	A	7	GLU	1
1	A	13	SER	1
1	A	25	ASN	1

6.3.3 RNA [i](#)

There are no RNA molecules in this entry.

6.4 Non-standard residues in protein, DNA, RNA chains [i](#)

There are no non-standard protein/DNA/RNA residues in this entry.

6.5 Carbohydrates [i](#)

There are no oligosaccharides in this entry.

6.6 Ligand geometry [i](#)

1 ligand is modelled in this entry.

In the following table, the Counts columns list the number of bonds for which Mogul statistics could be retrieved, the number of bonds that are observed in the model and the number of bonds that are defined in the chemical component dictionary. The Link column lists molecule types, if any, to which the group is linked. The Z score for a bond length is the number of standard deviations the observed value is removed from the expected value. A bond length with $|Z| > 2$ is considered an outlier worth inspection. RMSZ is the average root-mean-square of all Z scores of the bond lengths.

Mol	Type	Chain	Res	Link	Bond lengths		
					Counts	RMSZ	#Z>2
2	NAG	A	101	1	14,14,15	1.26±0.05	3±1 (18±4%)

In the following table, the Counts columns list the number of angles for which Mogul statistics could be retrieved, the number of angles that are observed in the model and the number of angles that are defined in the chemical component dictionary. The Link column lists molecule types, if any, to which the group is linked. The Z score for a bond angle is the number of standard deviations the observed value is removed from the expected value. A bond angle with $|Z| > 2$ is considered an outlier worth inspection. RMSZ is the average root-mean-square of all Z scores of the bond angles.

Mol	Type	Chain	Res	Link	Bond angles		
					Counts	RMSZ	#Z>2
2	NAG	A	101	1	17,19,21	1.03±0.26	0±1 (2±4%)

In the following table, the Chirals column lists the number of chiral outliers, the number of chiral centers analysed, the number of these observed in the model and the number defined in the chemical component dictionary. Similar counts are reported in the Torsion and Rings columns. '-' means no outliers of that kind were identified.

Mol	Type	Chain	Res	Link	Chirals	Torsions	Rings
2	NAG	A	101	1	-	0±0,6,23,26	0±0,1,1,1

All unique bond outliers are listed below. They are sorted according to the Z-score of the worst occurrence in the ensemble.

Mol	Chain	Res	Type	Atoms	Z	Observed(Å)	Ideal(Å)	Models	
								Worst	Total
2	A	101	NAG	O5-C5	3.14	1.49	1.43	5	16
2	A	101	NAG	C1-C2	2.47	1.55	1.52	5	16
2	A	101	NAG	O5-C1	2.42	1.47	1.43	3	11

All unique angle outliers are listed below. They are sorted according to the Z-score of the worst occurrence in the ensemble.

Mol	Chain	Res	Type	Atoms	Z	Observed(°)	Ideal(°)	Models	
								Worst	Total
2	A	101	NAG	C1-O5-C5	6.82	121.33	112.19	3	5
2	A	101	NAG	C3-C4-C5	2.59	114.93	110.23	3	1
2	A	101	NAG	O4-C4-C3	2.07	105.51	110.38	3	1

There are no chirality outliers.

There are no torsion outliers.

There are no ring outliers.

6.7 Other polymers [i](#)

There are no such molecules in this entry.

6.8 Polymer linkage issues [i](#)

There are no chain breaks in this entry.

7 Chemical shift validation [i](#)

The completeness of assignment taking into account all chemical shift lists is 49% for the well-defined parts and 50% for the entire structure.

7.1 Chemical shift list 1

File name: working_cs.cif

Chemical shift list name: *assigned_chem_shift_list_1*

7.1.1 Bookkeeping [i](#)

The following table shows the results of parsing the chemical shift list and reports the number of nuclei with statistically unusual chemical shifts.

Total number of shifts	251
Number of shifts mapped to atoms	250
Number of unparsed shifts	0
Number of shifts with mapping errors	1
Number of shifts with mapping warnings	0
Number of shift outliers (ShiftChecker)	6

The following assigned chemical shifts were not mapped to the molecules present in the coordinate file.

- No matching atom found in the structure. All 1 occurrences are reported below.

List ID	Chain	Res	Type	Atom	Shift Data		
					Value	Uncertainty	Ambiguity
1	A	14	ASN	HD22	8.661	0.005	2

7.1.2 Chemical shift referencing [i](#)

No chemical shift referencing corrections were calculated (not enough data).

7.1.3 Completeness of resonance assignments [i](#)

The following table shows the completeness of the chemical shift assignments for the well-defined regions of the structure. The overall completeness is 49%, i.e. 191 atoms were assigned a chemical shift out of a possible 386. 0 out of 1 assigned methyl groups (LEU and VAL) were assigned stereospecifically.

	Total	¹ H	¹³ C	¹⁵ N
Backbone	53/131 (40%)	53/53 (100%)	0/52 (0%)	0/26 (0%)
Sidechain	107/188 (57%)	107/119 (90%)	0/55 (0%)	0/14 (0%)
Aromatic	31/67 (46%)	31/33 (94%)	0/32 (0%)	0/2 (0%)
Overall	191/386 (49%)	191/205 (93%)	0/139 (0%)	0/42 (0%)

The following table shows the completeness of the chemical shift assignments for the full structure. The overall completeness is 50%, i.e. 241 atoms were assigned a chemical shift out of a possible 478. 0 out of 2 assigned methyl groups (LEU and VAL) were assigned stereospecifically.

	Total	¹ H	¹³ C	¹⁵ N
Backbone	66/167 (40%)	66/68 (97%)	0/68 (0%)	0/31 (0%)
Sidechain	144/244 (59%)	144/156 (92%)	0/73 (0%)	0/15 (0%)
Aromatic	31/67 (46%)	31/33 (94%)	0/32 (0%)	0/2 (0%)
Overall	241/478 (50%)	241/257 (94%)	0/173 (0%)	0/48 (0%)

7.1.4 Statistically unusual chemical shifts [i](#)

The following table lists the statistically unusual chemical shifts. These are statistical measures, and large deviations from the mean do not necessarily imply incorrect assignments. Molecules containing paramagnetic centres or hemes are expected to give rise to anomalous chemical shifts.

List Id	Chain	Res	Type	Atom	Shift, ppm	Expected range, ppm	Z-score
1	A	24	THR	HG1	5.06	0.08 – 2.19	18.6
1	A	21	ASN	HB2	-0.71	1.27 – 4.34	-11.4
1	A	9	ARG	HB2	-0.08	0.52 – 3.08	-7.3
1	A	9	ARG	HB3	-0.08	0.43 – 3.11	-6.9
1	A	32	PRO	HG2	-0.09	0.41 – 3.45	-6.7
1	A	21	ASN	HD22	4.10	4.69 – 9.61	-6.2

7.1.5 Random Coil Index (RCI) plots [i](#)

The image below reports *random coil index* values for the protein chains in the structure. The height of each bar gives a probability of a given residue to be disordered, as predicted from the available chemical shifts and the amino acid sequence. A value above 0.2 is an indication of significant predicted disorder. The colour of the bar shows whether the residue is in the well-defined core (black) or in the ill-defined residue ranges (cyan), as described in section 2 on ensemble composition. If well-defined core and ill-defined regions are not identified then it is shown as gray bars.

Random coil index (RCI) for chain A:

