



Full wwPDB X-ray Structure Validation Report ⓘ

Sep 11, 2023 – 08:47 PM EDT

PDB ID : 4MAM
Title : The crystal structure of phosphoribosylaminoimidazole carboxylase ATPase subunit of *Francisella tularensis* subsp. *tularensis* SCHU S4 in complex with an ADP analog, AMP-CP
Authors : Tan, K.; Zhou, M.; Kwon, K.; Anderson, W.F.; Joachimiak, A.; Center for Structural Genomics of Infectious Diseases (CSGID)
Deposited on : 2013-08-16
Resolution : 1.47 Å(reported)

This is a Full wwPDB X-ray Structure Validation Report for a publicly released PDB entry.

We welcome your comments at validation@mail.wwpdb.org

A user guide is available at

<https://www.wwpdb.org/validation/2017/XrayValidationReportHelp>

with specific help available everywhere you see the ⓘ symbol.

The types of validation reports are described at

<http://www.wwpdb.org/validation/2017/FAQs#types>.

The following versions of software and data (see [references](#) ①) were used in the production of this report:

MolProbity : 4.02b-467
Mogul : 1.8.5 (274361), CSD as541be (2020)
Xtrriage (Phenix) : 1.13
EDS : 2.35.1
buster-report : 1.1.7 (2018)
Percentile statistics : 20191225.v01 (using entries in the PDB archive December 25th 2019)
Refmac : 5.8.0158
CCP4 : 7.0.044 (Gargrove)
Ideal geometry (proteins) : Engh & Huber (2001)
Ideal geometry (DNA, RNA) : Parkinson et al. (1996)
Validation Pipeline (wwPDB-VP) : 2.35.1

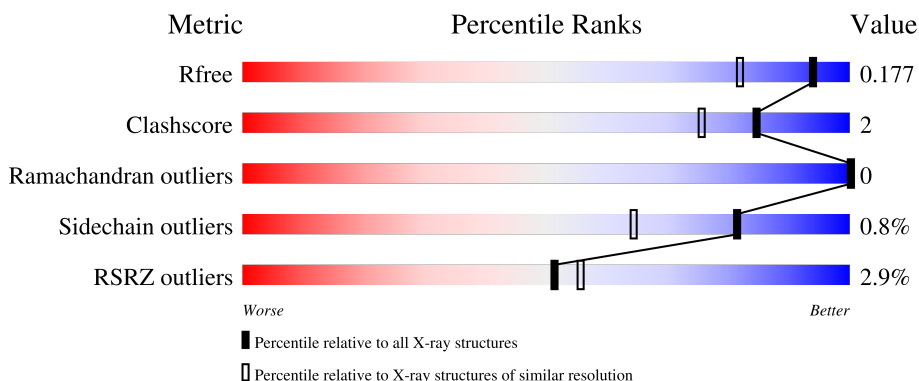
1 Overall quality at a glance

The following experimental techniques were used to determine the structure:

X-RAY DIFFRACTION

The reported resolution of this entry is 1.47 Å.

Percentile scores (ranging between 0-100) for global validation metrics of the entry are shown in the following graphic. The table shows the number of entries on which the scores are based.



Metric	Whole archive (#Entries)	Similar resolution (#Entries, resolution range(Å))
R_{free}	130704	4690 (1.50-1.46)
Clashscore	141614	4955 (1.50-1.46)
Ramachandran outliers	138981	4846 (1.50-1.46)
Sidechain outliers	138945	4844 (1.50-1.46)
RSRZ outliers	127900	4614 (1.50-1.46)

The table below summarises the geometric issues observed across the polymeric chains and their fit to the electron density. The red, orange, yellow and green segments of the lower bar indicate the fraction of residues that contain outliers for ≥ 3 , 2, 1 and 0 types of geometric quality criteria respectively. A grey segment represents the fraction of residues that are not modelled. The numeric value for each fraction is indicated below the corresponding segment, with a dot representing fractions $\leq 5\%$. The upper red bar (where present) indicates the fraction of residues that have poor fit to the electron density. The numeric value is given above the bar.

Mol	Chain	Length	Quality of chain
1	A	373	 2% 95% 5%
1	B	373	 3% 93% 5%

2 Entry composition [i](#)

There are 4 unique types of molecules in this entry. The entry contains 6780 atoms, of which 0 are hydrogens and 0 are deuteriums.

In the tables below, the ZeroOcc column contains the number of atoms modelled with zero occupancy, the AltConf column contains the number of residues with at least one atom in alternate conformation and the Trace column contains the number of residues modelled with at most 2 atoms.

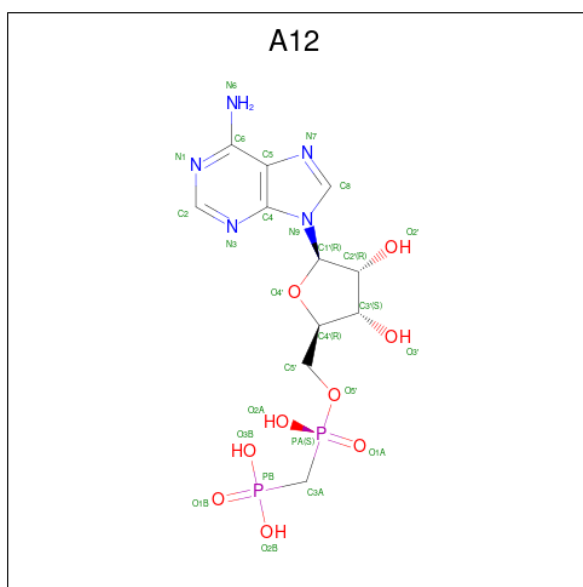
- Molecule 1 is a protein called Phosphoribosylaminoimidazole carboxylase, ATPase subunit.

Mol	Chain	Residues	Atoms						ZeroOcc	AltConf	Trace
			Total	C	N	O	S	Se			
1	A	373	2910	1860	490	549	4	7	0	7	0
1	B	365	2875	1844	487	534	4	6	0	10	0

There are 16 discrepancies between the modelled and reference sequences:

Chain	Residue	Modelled	Actual	Comment	Reference
A	366	ALA	-	expression tag	UNP Q5NGE8
A	367	GLY	-	expression tag	UNP Q5NGE8
A	368	GLU	-	expression tag	UNP Q5NGE8
A	369	ASN	-	expression tag	UNP Q5NGE8
A	370	LEU	-	expression tag	UNP Q5NGE8
A	371	TYR	-	expression tag	UNP Q5NGE8
A	372	PHE	-	expression tag	UNP Q5NGE8
A	373	GLN	-	expression tag	UNP Q5NGE8
B	366	ALA	-	expression tag	UNP Q5NGE8
B	367	GLY	-	expression tag	UNP Q5NGE8
B	368	GLU	-	expression tag	UNP Q5NGE8
B	369	ASN	-	expression tag	UNP Q5NGE8
B	370	LEU	-	expression tag	UNP Q5NGE8
B	371	TYR	-	expression tag	UNP Q5NGE8
B	372	PHE	-	expression tag	UNP Q5NGE8
B	373	GLN	-	expression tag	UNP Q5NGE8

- Molecule 2 is PHOSPHOMETHYLPHOSPHONIC ACID ADENOSYL ESTER (three-letter code: A12) (formula: C₁₁H₁₇N₅O₉P₂).



Mol	Chain	Residues	Atoms				ZeroOcc	AltConf		
			Total	C	N	O			P	
2	A	1	Total	27	11	5	9	2	0	0
2	B	1	Total	27	11	5	9	2	0	0

- Molecule 3 is GLYCEROL (three-letter code: GOL) (formula: $C_3H_8O_3$).



Mol	Chain	Residues	Atoms			ZeroOcc	AltConf	
			Total	C	O			
3	A	1	Total	6	3	3	0	0
3	A	1	Total	6	3	3	0	0

Continued on next page...

Continued from previous page...

Mol	Chain	Residues	Atoms			ZeroOcc	AltConf
3	B	1	Total	C	O	0	0
			6	3	3		

- Molecule 4 is water.

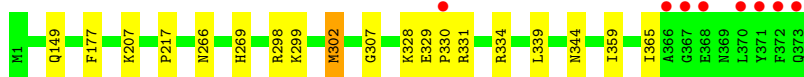
Mol	Chain	Residues	Atoms		ZeroOcc	AltConf
4	A	531	Total	O	0	0
			531	531		
4	B	392	Total	O	0	0
			392	392		

3 Residue-property plots [i](#)

These plots are drawn for all protein, RNA, DNA and oligosaccharide chains in the entry. The first graphic for a chain summarises the proportions of the various outlier classes displayed in the second graphic. The second graphic shows the sequence view annotated by issues in geometry and electron density. Residues are color-coded according to the number of geometric quality criteria for which they contain at least one outlier: green = 0, yellow = 1, orange = 2 and red = 3 or more. A red dot above a residue indicates a poor fit to the electron density ($RSRZ > 2$). Stretches of 2 or more consecutive residues without any outlier are shown as a green connector. Residues present in the sample, but not in the model, are shown in grey.

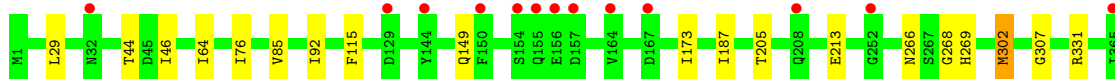
- Molecule 1: Phosphoribosylaminoimidazole carboxylase, ATPase subunit

Chain A: 



- Molecule 1: Phosphoribosylaminoimidazole carboxylase, ATPase subunit

Chain B: 



ALA
GLY
ASN
LEU
TYR
PHE
GLN

4 Data and refinement statistics

Property	Value	Source
Space group	P 21 21 21	Depositor
Cell constants a, b, c, α , β , γ	73.24Å 85.39Å 127.12Å 90.00° 90.00° 90.00°	Depositor
Resolution (Å)	25.49 – 1.47 25.49 – 1.47	Depositor EDS
% Data completeness (in resolution range)	99.2 (25.49-1.47) 99.2 (25.49-1.47)	Depositor EDS
R_{merge}	0.07	Depositor
R_{sym}	(Not available)	Depositor
$\langle I/\sigma(I) \rangle$ ¹	1.74 (at 1.48Å)	Xtrriage
Refinement program	PHENIX (phenix.refine: 1.8.2_1309)	Depositor
R, R_{free}	0.160 , 0.177 0.159 , 0.177	Depositor DCC
R_{free} test set	6716 reflections (5.03%)	wwPDB-VP
Wilson B-factor (Å ²)	16.0	Xtrriage
Anisotropy	0.515	Xtrriage
Bulk solvent k_{sol} (e/Å ³), B_{sol} (Å ²)	0.36 , 45.7	EDS
L-test for twinning ²	$\langle L \rangle = 0.50$, $\langle L^2 \rangle = 0.33$	Xtrriage
Estimated twinning fraction	No twinning to report.	Xtrriage
F_o, F_c correlation	0.97	EDS
Total number of atoms	6780	wwPDB-VP
Average B, all atoms (Å ²)	21.0	wwPDB-VP

Xtrriage's analysis on translational NCS is as follows: *The largest off-origin peak in the Patterson function is 3.63% of the height of the origin peak. No significant pseudotranslation is detected.*

¹Intensities estimated from amplitudes.

²Theoretical values of $\langle |L| \rangle$, $\langle L^2 \rangle$ for acentric reflections are 0.5, 0.333 respectively for untwinned datasets, and 0.375, 0.2 for perfectly twinned datasets.

5 Model quality [i](#)

5.1 Standard geometry [i](#)

Bond lengths and bond angles in the following residue types are not validated in this section: A12, GOL

The Z score for a bond length (or angle) is the number of standard deviations the observed value is removed from the expected value. A bond length (or angle) with $|Z| > 5$ is considered an outlier worth inspection. RMSZ is the root-mean-square of all Z scores of the bond lengths (or angles).

Mol	Chain	Bond lengths		Bond angles	
		RMSZ	# Z >5	RMSZ	# Z >5
1	A	0.34	0/2973	0.54	0/4016
1	B	0.32	0/2937	0.53	0/3967
All	All	0.33	0/5910	0.53	0/7983

There are no bond length outliers.

There are no bond angle outliers.

There are no chirality outliers.

There are no planarity outliers.

5.2 Too-close contacts [i](#)

In the following table, the Non-H and H(model) columns list the number of non-hydrogen atoms and hydrogen atoms in the chain respectively. The H(added) column lists the number of hydrogen atoms added and optimized by MolProbity. The Clashes column lists the number of clashes within the asymmetric unit, whereas Symm-Clashes lists symmetry-related clashes.

Mol	Chain	Non-H	H(model)	H(added)	Clashes	Symm-Clashes
1	A	2910	0	2922	12	0
1	B	2875	0	2921	12	0
2	A	27	0	14	3	0
2	B	27	0	14	4	0
3	A	12	0	16	2	0
3	B	6	0	8	0	0
4	A	531	0	0	0	0
4	B	392	0	0	0	0
All	All	6780	0	5895	27	0

The all-atom clashscore is defined as the number of clashes found per 1000 atoms (including hydrogen atoms). The all-atom clashscore for this structure is 2.

All (27) close contacts within the same asymmetric unit are listed below, sorted by their clash magnitude.

Atom-1	Atom-2	Interatomic distance (Å)	Clash overlap (Å)
1:A:269:HIS:HB2	1:A:302[B]:MSE:HE2	1.74	0.70
2:B:401:A12:H8	2:B:401:A12:O5'	1.92	0.69
1:B:149:GLN:NE2	2:B:401:A12:H3A1	2.11	0.65
1:A:339:LEU:HD12	1:A:359:ILE:HD11	1.79	0.64
1:A:149:GLN:NE2	2:A:401:A12:H3A1	2.17	0.59
1:A:207:LYS:HD2	1:A:365:ILE:HD12	1.85	0.58
1:B:269:HIS:HB2	1:B:302[A]:MSE:SE	2.55	0.57
1:B:149:GLN:HE22	2:B:401:A12:H3A1	1.70	0.56
1:A:149:GLN:HE22	2:A:401:A12:H3A1	1.73	0.53
2:A:401:A12:H8	2:A:401:A12:O5'	2.08	0.53
1:B:29[B]:LEU:HD11	1:B:46:ILE:HB	1.92	0.51
1:A:298:ARG:HH21	1:A:344:ASN:HD21	1.61	0.49
1:A:328:LYS:HZ1	3:A:402:GOL:H2	1.78	0.49
1:A:307[B]:GLY:HA2	1:A:331:ARG:O	2.13	0.48
1:B:269:HIS:HB2	1:B:302[B]:MSE:HE2	1.95	0.47
1:A:334:ARG:HH11	3:A:402:GOL:H12	1.80	0.46
1:B:307:GLY:HA2	1:B:331:ARG:O	2.15	0.46
1:B:29[B]:LEU:HD12	1:B:44:THR:O	2.17	0.45
1:B:64:ILE:HB	1:B:85:VAL:HG22	2.00	0.44
1:B:205:THR:HB	1:B:213:GLU:HB2	2.01	0.43
1:A:269:HIS:HB2	1:A:302[A]:MSE:SE	2.69	0.42
1:A:217:PRO:HD2	1:A:299:LYS:HA	2.01	0.42
1:B:187:ILE:HD12	1:B:268:GLY:HA3	2.02	0.42
1:B:115:PHE:HB2	1:B:173[A]:ILE:HD11	2.02	0.41
1:A:329:GLU:HA	1:A:330:PRO:HD3	1.94	0.41
2:B:401:A12:H5'1	2:B:401:A12:H3A2	1.98	0.41
1:B:76:ILE:HG13	1:B:92:ILE:CD1	2.52	0.40

There are no symmetry-related clashes.

5.3 Torsion angles [i](#)

5.3.1 Protein backbone [i](#)

In the following table, the Percentiles column shows the percent Ramachandran outliers of the chain as a percentile score with respect to all X-ray entries followed by that with respect to entries of similar resolution.

The Analysed column shows the number of residues for which the backbone conformation was analysed, and the total number of residues.

Mol	Chain	Analysed	Favoured	Allowed	Outliers	Percentiles	
1	A	377/373 (101%)	371 (98%)	6 (2%)	0	100	100
1	B	373/373 (100%)	369 (99%)	4 (1%)	0	100	100
All	All	750/746 (100%)	740 (99%)	10 (1%)	0	100	100

There are no Ramachandran outliers to report.

5.3.2 Protein sidechains [i](#)

In the following table, the Percentiles column shows the percent sidechain outliers of the chain as a percentile score with respect to all X-ray entries followed by that with respect to entries of similar resolution.

The Analysed column shows the number of residues for which the sidechain conformation was analysed, and the total number of residues.

Mol	Chain	Analysed	Rotameric	Outliers	Percentiles	
1	A	308/306 (101%)	304 (99%)	4 (1%)	69	42
1	B	305/306 (100%)	302 (99%)	3 (1%)	76	54
All	All	613/612 (100%)	606 (99%)	7 (1%)	81	50

All (7) residues with a non-rotameric sidechain are listed below:

Mol	Chain	Res	Type
1	A	177	PHE
1	A	266	ASN
1	A	302[A]	MSE
1	A	302[B]	MSE
1	B	266	ASN
1	B	302[A]	MSE
1	B	302[B]	MSE

Sometimes sidechains can be flipped to improve hydrogen bonding and reduce clashes. There are no such sidechains identified.

5.3.3 RNA [i](#)

There are no RNA molecules in this entry.

5.4 Non-standard residues in protein, DNA, RNA chains [i](#)

There are no non-standard protein/DNA/RNA residues in this entry.

5.5 Carbohydrates [i](#)

There are no monosaccharides in this entry.

5.6 Ligand geometry [i](#)

5 ligands are modelled in this entry.

In the following table, the Counts columns list the number of bonds (or angles) for which Mogul statistics could be retrieved, the number of bonds (or angles) that are observed in the model and the number of bonds (or angles) that are defined in the Chemical Component Dictionary. The Link column lists molecule types, if any, to which the group is linked. The Z score for a bond length (or angle) is the number of standard deviations the observed value is removed from the expected value. A bond length (or angle) with $|Z| > 2$ is considered an outlier worth inspection. RMSZ is the root-mean-square of all Z scores of the bond lengths (or angles).

Mol	Type	Chain	Res	Link	Bond lengths			Bond angles		
					Counts	RMSZ	# Z > 2	Counts	RMSZ	# Z > 2
3	GOL	B	402	-	5,5,5	0.31	0	5,5,5	0.41	0
3	GOL	A	402	-	5,5,5	0.34	0	5,5,5	0.34	0
2	A12	B	401	-	24,29,29	2.08	7 (29%)	27,45,45	1.73	6 (22%)
3	GOL	A	403	-	5,5,5	0.37	0	5,5,5	0.41	0
2	A12	A	401	-	24,29,29	2.05	8 (33%)	27,45,45	1.45	4 (14%)

In the following table, the Chirals column lists the number of chiral outliers, the number of chiral centers analysed, the number of these observed in the model and the number defined in the Chemical Component Dictionary. Similar counts are reported in the Torsion and Rings columns. '-' means no outliers of that kind were identified.

Mol	Type	Chain	Res	Link	Chirals	Torsions	Rings
3	GOL	B	402	-	-	0/4/4/4	-
3	GOL	A	402	-	-	4/4/4/4	-
2	A12	B	401	-	-	3/12/32/32	0/3/3/3
3	GOL	A	403	-	-	2/4/4/4	-
2	A12	A	401	-	-	2/12/32/32	0/3/3/3

All (15) bond length outliers are listed below:

Mol	Chain	Res	Type	Atoms	Z	Observed(Å)	Ideal(Å)
2	B	401	A12	O4'-C1'	6.17	1.49	1.41
2	A	401	A12	O4'-C1'	5.65	1.49	1.41
2	B	401	A12	C2'-C1'	-3.37	1.48	1.53
2	A	401	A12	C2'-C1'	-3.37	1.48	1.53
2	B	401	A12	C2'-C3'	-3.12	1.44	1.53
2	A	401	A12	C2'-C3'	-2.95	1.45	1.53
2	B	401	A12	O4'-C4'	2.70	1.51	1.45
2	A	401	A12	O4'-C4'	2.62	1.50	1.45
2	B	401	A12	O3'-C3'	2.55	1.49	1.43
2	A	401	A12	O3'-C3'	2.37	1.48	1.43
2	A	401	A12	C6-N6	2.30	1.42	1.34
2	B	401	A12	C6-N6	2.29	1.42	1.34
2	B	401	A12	C3'-C4'	-2.20	1.47	1.53
2	A	401	A12	PA-O2A	-2.12	1.51	1.56
2	A	401	A12	C3'-C4'	-2.03	1.47	1.53

All (10) bond angle outliers are listed below:

Mol	Chain	Res	Type	Atoms	Z	Observed(°)	Ideal(°)
2	B	401	A12	N3-C2-N1	-5.31	120.38	128.68
2	A	401	A12	N3-C2-N1	-4.50	121.65	128.68
2	B	401	A12	O1B-PB-C3A	-3.98	102.67	111.24
2	A	401	A12	O3B-PB-C3A	-2.63	100.02	106.40
2	B	401	A12	C4-C5-N7	-2.53	106.77	109.40
2	B	401	A12	C3'-C2'-C1'	2.50	104.74	100.98
2	A	401	A12	C3'-C2'-C1'	2.22	104.33	100.98
2	B	401	A12	O2B-PB-C3A	2.11	111.52	106.40
2	B	401	A12	O3B-PB-C3A	2.08	111.44	106.40
2	A	401	A12	C4-C5-N7	-2.03	107.29	109.40

There are no chirality outliers.

All (11) torsion outliers are listed below:

Mol	Chain	Res	Type	Atoms
2	B	401	A12	PB-C3A-PA-O1A
3	A	403	GOL	C1-C2-C3-O3
3	A	402	GOL	O1-C1-C2-C3
3	A	402	GOL	C1-C2-C3-O3
3	A	403	GOL	O2-C2-C3-O3
3	A	402	GOL	O1-C1-C2-O2
2	B	401	A12	C5'-O5'-PA-C3A
2	A	401	A12	C5'-O5'-PA-C3A

Continued on next page...

Continued from previous page...

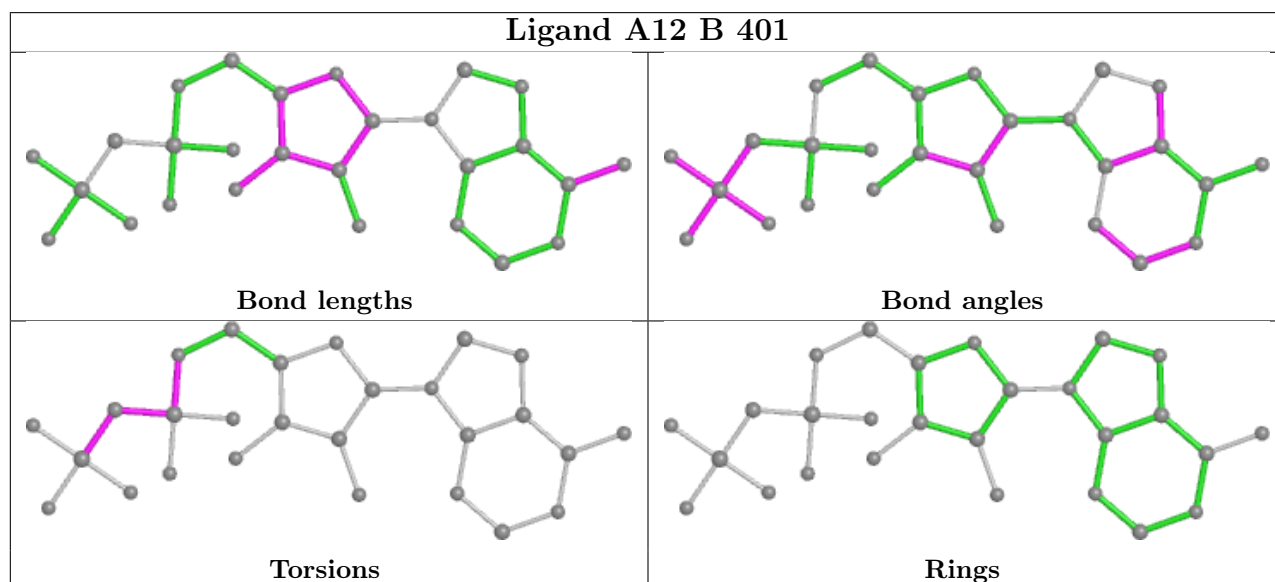
Mol	Chain	Res	Type	Atoms
2	A	401	A12	PB-C3A-PA-O1A
2	B	401	A12	PA-C3A-PB-O1B
3	A	402	GOL	O2-C2-C3-O3

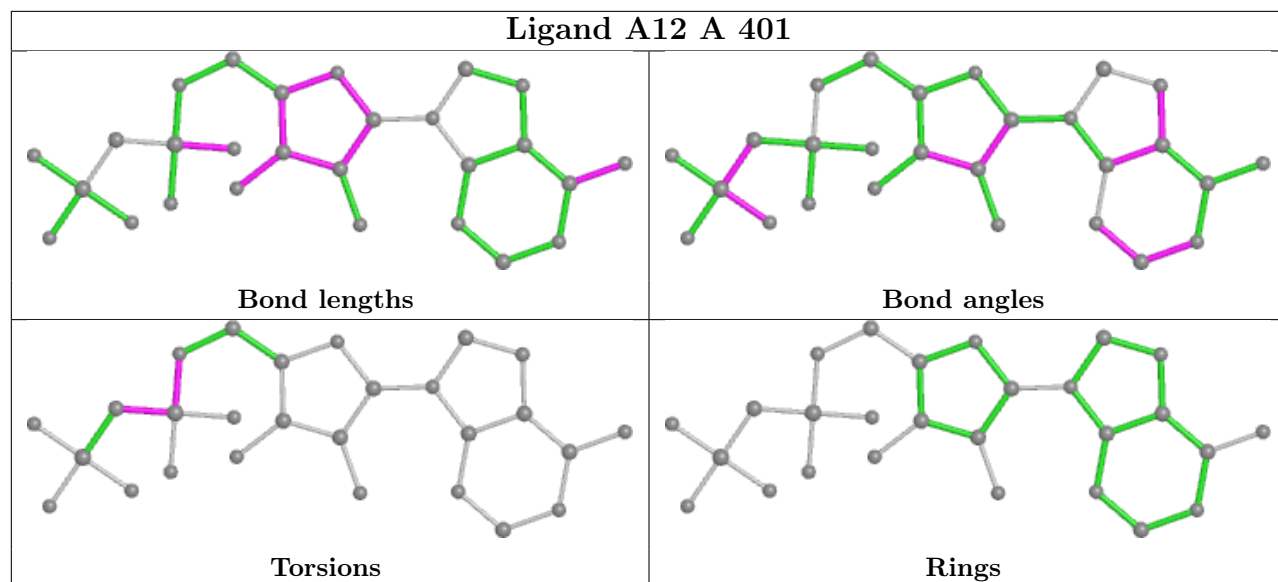
There are no ring outliers.

3 monomers are involved in 9 short contacts:

Mol	Chain	Res	Type	Clashes	Symm-Clashes
3	A	402	GOL	2	0
2	B	401	A12	4	0
2	A	401	A12	3	0

The following is a two-dimensional graphical depiction of Mogul quality analysis of bond lengths, bond angles, torsion angles, and ring geometry for all instances of the Ligand of Interest. In addition, ligands with molecular weight > 250 and outliers as shown on the validation Tables will also be included. For torsion angles, if less than 5% of the Mogul distribution of torsion angles is within 10 degrees of the torsion angle in question, then that torsion angle is considered an outlier. Any bond that is central to one or more torsion angles identified as an outlier by Mogul will be highlighted in the graph. For rings, the root-mean-square deviation (RMSD) between the ring in question and similar rings identified by Mogul is calculated over all ring torsion angles. If the average RMSD is greater than 60 degrees and the minimal RMSD between the ring in question and any Mogul-identified rings is also greater than 60 degrees, then that ring is considered an outlier. The outliers are highlighted in purple. The color gray indicates Mogul did not find sufficient equivalents in the CSD to analyse the geometry.





5.7 Other polymers [i](#)

There are no such residues in this entry.

5.8 Polymer linkage issues [i](#)

There are no chain breaks in this entry.

6 Fit of model and data

6.1 Protein, DNA and RNA chains

In the following table, the column labelled ‘#RSRZ > 2’ contains the number (and percentage) of RSRZ outliers, followed by percent RSRZ outliers for the chain as percentile scores relative to all X-ray entries and entries of similar resolution. The OWAB column contains the minimum, median, 95th percentile and maximum values of the occupancy-weighted average B-factor per residue. The column labelled ‘Q < 0.9’ lists the number of (and percentage) of residues with an average occupancy less than 0.9.

Mol	Chain	Analysed	<RSRZ>	#RSRZ>2	OWAB(Å ²)	Q<0.9
1	A	368/373 (98%)	-0.10	8 (2%) 62 66	10, 16, 28, 50	0
1	B	360/373 (96%)	0.05	13 (3%) 42 46	10, 18, 36, 54	0
All	All	728/746 (97%)	-0.03	21 (2%) 51 56	10, 17, 33, 54	0

All (21) RSRZ outliers are listed below:

Mol	Chain	Res	Type	RSRZ
1	B	365	ILE	5.4
1	B	144	TYR	4.6
1	A	372	PHE	4.4
1	A	366	ALA	3.9
1	A	370	LEU	3.9
1	B	154	SER	3.9
1	B	150	PHE	3.6
1	B	155	GLN	3.4
1	B	164	VAL	3.1
1	A	373	GLN	2.9
1	B	208	GLN	2.8
1	B	167	ASP	2.7
1	B	32	ASN	2.7
1	B	157	ASP	2.5
1	B	156	GLU	2.3
1	A	367	GLY	2.3
1	A	371	TYR	2.3
1	B	129	ASP	2.2
1	B	252	GLY	2.1
1	A	330	PRO	2.1
1	A	368	GLU	2.0

6.2 Non-standard residues in protein, DNA, RNA chains [i](#)

There are no non-standard protein/DNA/RNA residues in this entry.

6.3 Carbohydrates [i](#)

There are no monosaccharides in this entry.

6.4 Ligands [i](#)

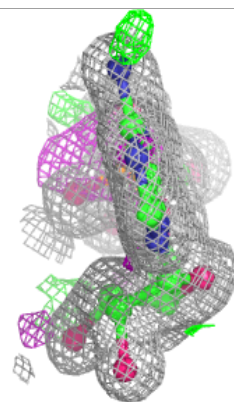
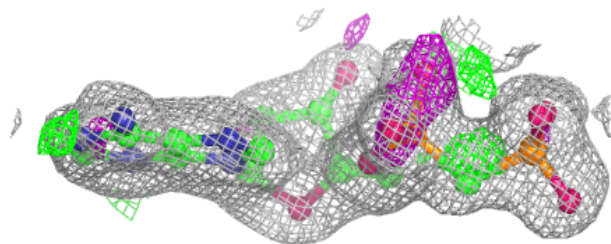
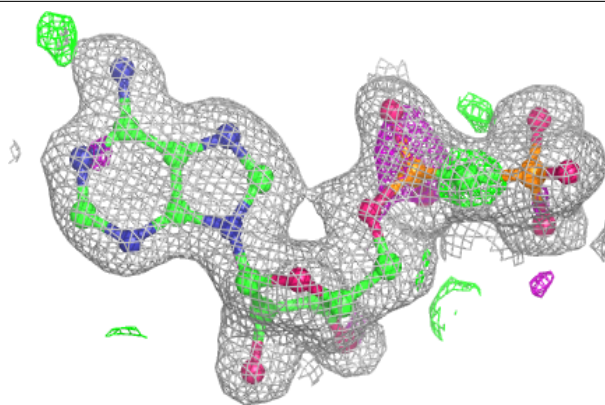
In the following table, the Atoms column lists the number of modelled atoms in the group and the number defined in the chemical component dictionary. The B-factors column lists the minimum, median, 95th percentile and maximum values of B factors of atoms in the group. The column labelled 'Q< 0.9' lists the number of atoms with occupancy less than 0.9.

Mol	Type	Chain	Res	Atoms	RSCC	RSR	B-factors(Å ²)	Q<0.9
3	GOL	A	402	6/6	0.71	0.20	47,51,53,58	0
3	GOL	B	402	6/6	0.83	0.13	22,34,42,45	0
3	GOL	A	403	6/6	0.92	0.24	26,31,37,49	0
2	A12	B	401	27/27	0.94	0.10	19,23,30,31	0
2	A12	A	401	27/27	0.97	0.07	12,16,19,19	0

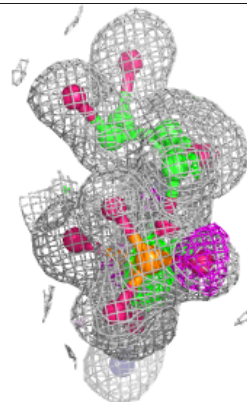
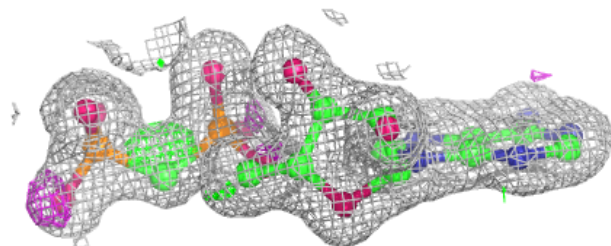
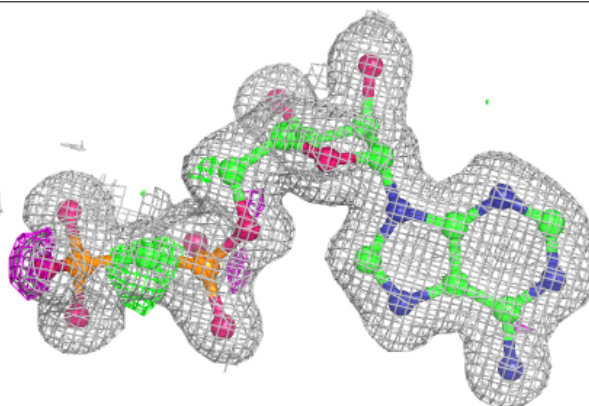
The following is a graphical depiction of the model fit to experimental electron density of all instances of the Ligand of Interest. In addition, ligands with molecular weight > 250 and outliers as shown on the geometry validation Tables will also be included. Each fit is shown from different orientation to approximate a three-dimensional view.

Electron density around A12 B 401:

$2mF_o-DF_c$ (at 0.7 rmsd) in gray
 mF_o-DF_c (at 3 rmsd) in purple (negative)
and green (positive)

**Electron density around A12 A 401:**

$2mF_o-DF_c$ (at 0.7 rmsd) in gray
 mF_o-DF_c (at 3 rmsd) in purple (negative)
and green (positive)



6.5 Other polymers [i](#)

There are no such residues in this entry.