



Full wwPDB X-ray Structure Validation Report ⓘ

Mar 9, 2018 – 01:43 pm GMT

PDB ID : 3MEG
Title : HIV-1 K103N Reverse Transcriptase in Complex with TMC278
Authors : Lansdon, E.B.
Deposited on : 2010-03-31
Resolution : 2.80 Å(reported)

This is a Full wwPDB X-ray Structure Validation Report for a publicly released PDB entry.

We welcome your comments at validation@mail.wwpdb.org

A user guide is available at

<https://www.wwpdb.org/validation/2017/XrayValidationReportHelp>

with specific help available everywhere you see the ⓘ symbol.

The following versions of software and data (see [references ⓘ](#)) were used in the production of this report:

MolProbity : 4.02b-467
Mogul : 1.7.3 (157068), CSD as539be (2018)
Xtriage (Phenix) : 1.13
EDS : trunk30967
Percentile statistics : 20171227.v01 (using entries in the PDB archive December 27th 2017)
Refmac : 5.8.0158
CCP4 : 7.0 (Gargrove)
Ideal geometry (proteins) : Engh & Huber (2001)
Ideal geometry (DNA, RNA) : Parkinson et al. (1996)
Validation Pipeline (wwPDB-VP) : trunk30967

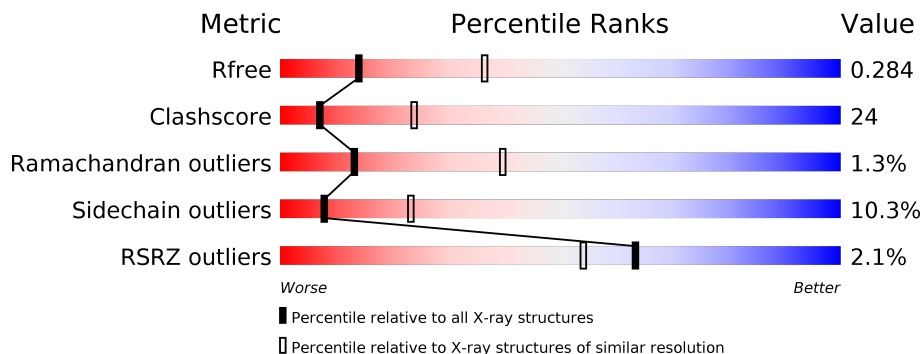
1 Overall quality at a glance

The following experimental techniques were used to determine the structure:

X-RAY DIFFRACTION

The reported resolution of this entry is 2.80 Å.

Percentile scores (ranging between 0-100) for global validation metrics of the entry are shown in the following graphic. The table shows the number of entries on which the scores are based.



Metric	Whole archive (#Entries)	Similar resolution (#Entries, resolution range(Å))
R_{free}	111664	2792 (2.80-2.80)
Clashscore	122126	3209 (2.80-2.80)
Ramachandran outliers	120053	3158 (2.80-2.80)
Sidechain outliers	120020	3160 (2.80-2.80)
RSRZ outliers	108989	2726 (2.80-2.80)

The table below summarises the geometric issues observed across the polymeric chains and their fit to the electron density. The red, orange, yellow and green segments on the lower bar indicate the fraction of residues that contain outliers for ≥ 3 , 2, 1 and 0 types of geometric quality criteria. A grey segment represents the fraction of residues that are not modelled. The numeric value for each fraction is indicated below the corresponding segment, with a dot representing fractions $\leq 5\%$. The upper red bar (where present) indicates the fraction of residues that have poor fit to the electron density. The numeric value is given above the bar.

Mol	Chain	Length	Quality of chain
1	A	560	<p>2% 51% 43% 6% •</p>
2	B	440	<p>2% 50% 36% 5% 8%</p>

2 Entry composition

There are 5 unique types of molecules in this entry. The entry contains 7903 atoms, of which 0 are hydrogens and 0 are deuteriums.

In the tables below, the ZeroOcc column contains the number of atoms modelled with zero occupancy, the AltConf column contains the number of residues with at least one atom in alternate conformation and the Trace column contains the number of residues modelled with at most 2 atoms.

- Molecule 1 is a protein called p66 Reverse transcriptase.

Mol	Chain	Residues	Atoms					ZeroOcc	AltConf	Trace
			Total	C	N	O	S			
1	A	552	4501	2909	751	833	8	0	0	0

There is a discrepancy between the modelled and reference sequences:

Chain	Residue	Modelled	Actual	Comment	Reference
A	103	ASN	LYS	ENGINEERED	UNP P04585

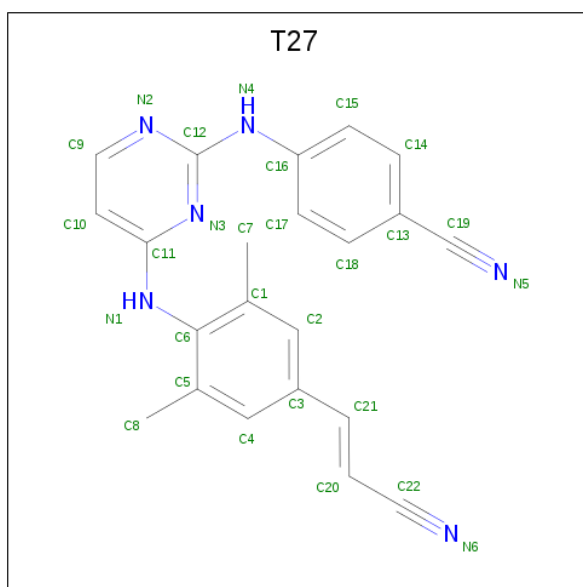
- Molecule 2 is a protein called p51 Reverse transcriptase.

Mol	Chain	Residues	Atoms					ZeroOcc	AltConf	Trace
			Total	C	N	O	S			
2	B	404	3333	2169	549	609	6	0	0	0

There is a discrepancy between the modelled and reference sequences:

Chain	Residue	Modelled	Actual	Comment	Reference
B	103	ASN	LYS	ENGINEERED	UNP P04585

- Molecule 3 is 4-{{4-({4-[(E)-2-cyanoethenyl]-2,6-dimethylphenyl}amino)pyrimidin-2-yl}amino}benzotrile (three-letter code: T27) (formula: C₂₂H₁₈N₆).



Mol	Chain	Residues	Atoms			ZeroOcc	AltConf
3	A	1	Total	C	N	0	0
			28	22	6		

- Molecule 4 is SULFATE ION (three-letter code: SO4) (formula: O₄S).



Mol	Chain	Residues	Atoms			ZeroOcc	AltConf
4	A	1	Total	O	S	0	0
			5	4	1		
4	A	1	Total	O	S	0	0
			5	4	1		
4	A	1	Total	O	S	0	0
			5	4	1		

Continued on next page...

Continued from previous page...

Mol	Chain	Residues	Atoms			ZeroOcc	AltConf
4	A	1	Total	O	S	0	0
			5	4	1		
4	B	1	Total	O	S	0	0
			5	4	1		

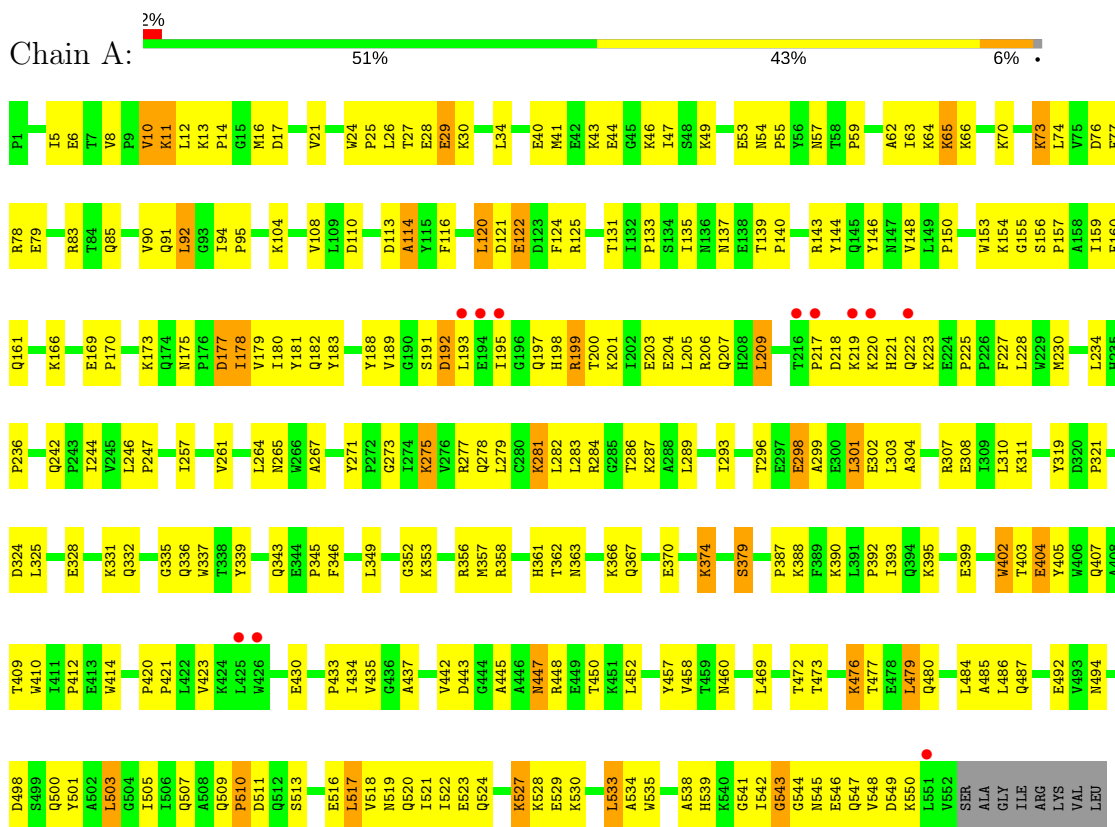
- Molecule 5 is water.

Mol	Chain	Residues	Atoms		ZeroOcc	AltConf
5	A	8	Total	O	0	0
			8	8		
5	B	8	Total	O	0	0
			8	8		

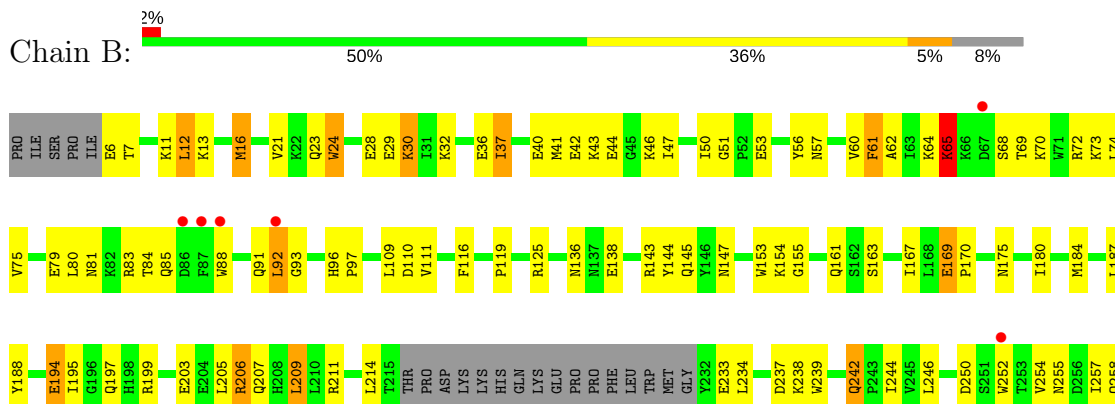
3 Residue-property plots

These plots are drawn for all protein, RNA and DNA chains in the entry. The first graphic for a chain summarises the proportions of the various outlier classes displayed in the second graphic. The second graphic shows the sequence view annotated by issues in geometry and electron density. Residues are color-coded according to the number of geometric quality criteria for which they contain at least one outlier: green = 0, yellow = 1, orange = 2 and red = 3 or more. A red dot above a residue indicates a poor fit to the electron density ($RSRZ > 2$). Stretches of 2 or more consecutive residues without any outlier are shown as a green connector. Residues present in the sample, but not in the model, are shown in grey.

- Molecule 1: p66 Reverse transcriptase



- Molecule 2: p51 Reverse transcriptase



4 Data and refinement statistics

Property	Value	Source
Space group	C 2 2 21	Depositor
Cell constants a, b, c, α , β , γ	119.58Å 154.91Å 153.72Å 90.00° 90.00° 90.00°	Depositor
Resolution (Å)	29.94 – 2.80 47.33 – 2.79	Depositor EDS
% Data completeness (in resolution range)	85.9 (29.94-2.80) 85.7 (47.33-2.79)	Depositor EDS
R_{merge}	0.06	Depositor
R_{sym}	(Not available)	Depositor
$\langle I/\sigma(I) \rangle$ ¹	3.82 (at 2.81Å)	Xtrriage
Refinement program	CNX 2005	Depositor
R, R_{free}	0.229 , 0.289 0.219 , 0.284	Depositor DCC
R_{free} test set	1498 reflections (4.44%)	wwPDB-VP
Wilson B-factor (Å ²)	66.3	Xtrriage
Anisotropy	0.381	Xtrriage
Bulk solvent k_{sol} (e/Å ³), B_{sol} (Å ²)	0.34 , 46.3	EDS
L-test for twinning ²	$\langle L \rangle = 0.49$, $\langle L^2 \rangle = 0.33$	Xtrriage
Estimated twinning fraction	No twinning to report.	Xtrriage
F_o, F_c correlation	0.93	EDS
Total number of atoms	7903	wwPDB-VP
Average B, all atoms (Å ²)	65.0	wwPDB-VP

Xtrriage's analysis on translational NCS is as follows: *The largest off-origin peak in the Patterson function is 3.90% of the height of the origin peak. No significant pseudotranslation is detected.*

¹Intensities estimated from amplitudes.

²Theoretical values of $\langle |L| \rangle$, $\langle L^2 \rangle$ for acentric reflections are 0.5, 0.333 respectively for untwinned datasets, and 0.375, 0.2 for perfectly twinned datasets.

5 Model quality [i](#)

5.1 Standard geometry [i](#)

Bond lengths and bond angles in the following residue types are not validated in this section: SO4, T27

The Z score for a bond length (or angle) is the number of standard deviations the observed value is removed from the expected value. A bond length (or angle) with $|Z| > 5$ is considered an outlier worth inspection. RMSZ is the root-mean-square of all Z scores of the bond lengths (or angles).

Mol	Chain	Bond lengths		Bond angles	
		RMSZ	# Z >5	RMSZ	# Z >5
1	A	0.40	0/4618	0.55	0/6276
2	B	0.41	0/3426	0.56	0/4658
All	All	0.41	0/8044	0.55	0/10934

Chiral center outliers are detected by calculating the chiral volume of a chiral center and verifying if the center is modelled as a planar moiety or with the opposite hand. A planarity outlier is detected by checking planarity of atoms in a peptide group, atoms in a mainchain group or atoms of a sidechain that are expected to be planar.

Mol	Chain	#Chirality outliers	#Planarity outliers
2	B	0	1

There are no bond length outliers.

There are no bond angle outliers.

There are no chirality outliers.

All (1) planarity outliers are listed below:

Mol	Chain	Res	Type	Group
2	B	362	THR	Peptide

5.2 Too-close contacts [i](#)

In the following table, the Non-H and H(model) columns list the number of non-hydrogen atoms and hydrogen atoms in the chain respectively. The H(added) column lists the number of hydrogen atoms added and optimized by MolProbity. The Clashes column lists the number of clashes within the asymmetric unit, whereas Symm-Clashes lists symmetry related clashes.

Mol	Chain	Non-H	H(model)	H(added)	Clashes	Symm-Clashes
1	A	4501	0	4546	229	0
2	B	3333	0	3345	176	0
3	A	28	0	18	5	0
4	A	20	0	0	0	0
4	B	5	0	0	0	0
5	A	8	0	0	0	0
5	B	8	0	0	0	0
All	All	7903	0	7909	386	0

The all-atom clashscore is defined as the number of clashes found per 1000 atoms (including hydrogen atoms). The all-atom clashscore for this structure is 24.

All (386) close contacts within the same asymmetric unit are listed below, sorted by their clash magnitude.

Atom-1	Atom-2	Interatomic distance (Å)	Clash overlap (Å)
1:A:199:ARG:HG2	1:A:199:ARG:HH11	1.20	1.01
2:B:13:LYS:HE3	2:B:85:GLN:HB3	1.51	0.91
2:B:362:THR:CG2	2:B:363:ASN:H	1.86	0.89
1:A:199:ARG:HG2	1:A:199:ARG:NH1	1.85	0.88
1:A:108:VAL:HG22	1:A:188:TYR:HD2	1.41	0.86
1:A:498:ASP:HB2	1:A:538:ALA:HB2	1.57	0.86
1:A:178:ILE:HD12	1:A:179:VAL:N	1.91	0.85
1:A:337:TRP:HE1	1:A:367:GLN:NE2	1.75	0.83
1:A:191:SER:HB3	1:A:198:HIS:ND1	1.94	0.82
2:B:362:THR:HG23	2:B:363:ASN:H	1.46	0.79
2:B:332:GLN:HB2	2:B:336:GLN:HB2	1.65	0.79
1:A:337:TRP:HE1	1:A:367:GLN:HE21	1.26	0.79
2:B:50:ILE:HG21	2:B:145:GLN:HG3	1.66	0.78
2:B:92:LEU:HD13	2:B:93:GLY:H	1.47	0.78
1:A:65:LYS:HE2	1:A:66:LYS:NZ	1.98	0.77
1:A:542:ILE:HG23	2:B:283:LEU:HD23	1.66	0.76
2:B:362:THR:CG2	2:B:363:ASN:N	2.45	0.76
1:A:335:GLY:HA2	1:A:367:GLN:HE22	1.51	0.76
1:A:223:LYS:HA	1:A:223:LYS:HE2	1.68	0.75
1:A:108:VAL:HG22	1:A:188:TYR:CD2	2.21	0.75
1:A:298:GLU:CD	1:A:298:GLU:H	1.90	0.74
1:A:458:VAL:HG23	1:A:548:VAL:HB	1.70	0.73
1:A:199:ARG:CG	1:A:199:ARG:HH11	1.98	0.73
1:A:104:LYS:HB2	1:A:192:ASP:HA	1.69	0.73
2:B:46:LYS:HD3	2:B:116:PHE:CD2	2.25	0.72
1:A:278:GLN:HG3	1:A:298:GLU:HB2	1.71	0.72
1:A:94:ILE:HG23	1:A:95:PRO:HD2	1.71	0.72

Continued on next page...

Continued from previous page...

Atom-1	Atom-2	Interatomic distance (Å)	Clash overlap (Å)
1:A:503:LEU:HD12	1:A:535:TRP:HB2	1.70	0.71
1:A:358:ARG:NH1	2:B:394:GLN:HG3	2.06	0.71
1:A:412:PRO:HG3	2:B:401:TRP:CZ2	2.26	0.71
1:A:28:GLU:HG3	1:A:135:ILE:HG23	1.71	0.71
2:B:65:LYS:O	2:B:407:GLN:HG2	1.91	0.70
2:B:244:ILE:HD12	2:B:244:ILE:H	1.56	0.70
1:A:450:THR:CG2	1:A:452:LEU:HB2	2.20	0.70
2:B:209:LEU:HB3	2:B:214:LEU:HB3	1.73	0.70
1:A:343:GLN:HG3	1:A:349:LEU:HD11	1.74	0.70
2:B:206:ARG:HH11	2:B:206:ARG:HB2	1.57	0.70
1:A:178:ILE:HD12	1:A:179:VAL:H	1.56	0.69
2:B:395:LYS:HD3	2:B:399:GLU:OE1	1.92	0.69
1:A:445:ALA:O	1:A:477:THR:HG21	1.93	0.69
2:B:354:TYR:CD2	2:B:374:LYS:HD3	2.28	0.69
1:A:479:LEU:HB3	1:A:517:LEU:HD13	1.74	0.69
1:A:469:LEU:HD21	1:A:480:GLN:HG3	1.74	0.68
1:A:181:TYR:CE2	1:A:183:TYR:HB2	2.29	0.68
1:A:301:LEU:O	1:A:304:ALA:HB3	1.93	0.68
1:A:65:LYS:HE2	1:A:66:LYS:HZ2	1.59	0.68
1:A:486:LEU:HB3	1:A:524:GLN:HG2	1.76	0.68
2:B:378:GLU:O	2:B:382:ILE:HG13	1.94	0.68
1:A:278:GLN:HB3	1:A:299:ALA:HA	1.75	0.67
1:A:545:ASN:O	1:A:549:ASP:HB2	1.93	0.67
2:B:345:PRO:O	2:B:346:PHE:HB2	1.94	0.67
1:A:296:THR:HB	1:A:298:GLU:OE2	1.94	0.67
2:B:244:ILE:N	2:B:244:ILE:HD12	2.09	0.67
1:A:79:GLU:O	1:A:83:ARG:HG3	1.95	0.66
1:A:175:ASN:HB3	1:A:178:ILE:CG2	2.25	0.66
2:B:50:ILE:HG21	2:B:145:GLN:CG	2.25	0.66
1:A:59:PRO:HG2	1:A:76:ASP:HB3	1.78	0.65
2:B:154:LYS:HG2	2:B:184:MET:SD	2.36	0.65
2:B:194:GLU:HG3	2:B:197:GLN:HG3	1.78	0.64
2:B:60:VAL:HG12	2:B:75:VAL:HG22	1.77	0.64
1:A:11:LYS:HE3	1:A:11:LYS:HA	1.78	0.64
1:A:114:ALA:HB1	1:A:160:PHE:CE1	2.33	0.64
1:A:405:TYR:CE2	1:A:407:GLN:HB2	2.32	0.64
2:B:154:LYS:HE3	2:B:184:MET:SD	2.38	0.64
1:A:281:LYS:HG2	1:A:284:ARG:NH2	2.12	0.64
1:A:469:LEU:CD2	1:A:480:GLN:HG3	2.28	0.63
1:A:494:ASN:HB3	2:B:289:LEU:HD12	1.81	0.63
2:B:65:LYS:H	2:B:65:LYS:HD2	1.63	0.62

Continued on next page...

Continued from previous page...

Atom-1	Atom-2	Interatomic distance (Å)	Clash overlap (Å)
2:B:271:TYR:O	2:B:274:ILE:HG12	1.99	0.62
1:A:433:PRO:HG3	2:B:255:ASN:ND2	2.15	0.62
1:A:27:THR:OG1	1:A:30:LYS:HG3	1.99	0.62
1:A:73:LYS:HE3	1:A:146:TYR:OH	2.00	0.62
1:A:191:SER:HB3	1:A:198:HIS:CE1	2.35	0.61
2:B:50:ILE:HD13	2:B:145:GLN:HG3	1.82	0.61
1:A:91:GLN:HG3	1:A:91:GLN:O	2.00	0.61
1:A:139:THR:HB	1:A:140:PRO:HD2	1.81	0.61
1:A:435:VAL:HA	2:B:290:THR:HG21	1.82	0.61
2:B:362:THR:HG22	2:B:363:ASN:H	1.63	0.61
1:A:175:ASN:HB3	1:A:178:ILE:HG23	1.83	0.60
1:A:265:ASN:OD1	1:A:353:LYS:NZ	2.29	0.60
1:A:450:THR:HG22	1:A:452:LEU:HB2	1.84	0.60
2:B:203:GLU:OE2	2:B:206:ARG:NH1	2.35	0.60
2:B:362:THR:HG22	2:B:363:ASN:N	2.15	0.60
1:A:114:ALA:HB1	1:A:160:PHE:CZ	2.37	0.60
2:B:65:LYS:HG2	2:B:68:SER:HB3	1.82	0.60
2:B:329:ILE:O	2:B:392:PRO:HG3	2.02	0.60
1:A:287:LYS:HD3	1:A:293:ILE:HD11	1.84	0.59
1:A:363:ASN:HA	1:A:511:ASP:OD1	2.01	0.59
1:A:392:PRO:O	1:A:423:VAL:HG12	2.03	0.59
1:A:197:GLN:O	1:A:200:THR:HB	2.02	0.59
1:A:420:PRO:HA	1:A:421:PRO:C	2.23	0.59
1:A:65:LYS:HG2	1:A:66:LYS:HD2	1.85	0.58
2:B:295:LEU:HD13	2:B:295:LEU:N	2.19	0.58
1:A:139:THR:HB	1:A:140:PRO:CD	2.33	0.58
2:B:362:THR:HG23	2:B:363:ASN:N	2.15	0.58
2:B:388:LYS:HG2	2:B:413:GLU:HB2	1.85	0.58
2:B:79:GLU:O	2:B:83:ARG:HG3	2.03	0.58
2:B:194:GLU:CG	2:B:197:GLN:HG3	2.32	0.58
2:B:85:GLN:HA	2:B:88:TRP:NE1	2.18	0.58
1:A:65:LYS:HE2	1:A:66:LYS:HZ3	1.69	0.58
1:A:206:ARG:NH1	1:A:218:ASP:HA	2.18	0.58
1:A:277:ARG:HB2	1:A:336:GLN:NE2	2.18	0.58
2:B:295:LEU:H	2:B:295:LEU:HD22	1.68	0.58
1:A:195:ILE:CG2	1:A:199:ARG:HH21	2.16	0.58
2:B:254:VAL:O	2:B:258:GLN:HG3	2.04	0.58
1:A:275:LYS:HG3	1:A:332:GLN:HE21	1.69	0.58
2:B:163:SER:O	2:B:167:ILE:HG13	2.03	0.57
2:B:110:ASP:O	2:B:214:LEU:HD21	2.04	0.57
2:B:279:LEU:O	2:B:282:LEU:HG	2.04	0.57

Continued on next page...

Continued from previous page...

Atom-1	Atom-2	Interatomic distance (Å)	Clash overlap (Å)
1:A:28:GLU:HG3	1:A:135:ILE:CG2	2.34	0.57
1:A:435:VAL:CA	2:B:290:THR:HG21	2.34	0.57
2:B:47:ILE:HD12	2:B:144:TYR:CD1	2.39	0.57
2:B:88:TRP:CZ2	2:B:154:LYS:HD2	2.38	0.57
2:B:294:PRO:C	2:B:295:LEU:HD13	2.24	0.57
1:A:177:ASP:N	1:A:177:ASP:OD2	2.37	0.57
1:A:282:LEU:H	1:A:282:LEU:HD22	1.70	0.57
1:A:412:PRO:HG3	2:B:401:TRP:HZ2	1.66	0.57
1:A:435:VAL:N	2:B:290:THR:HG21	2.20	0.57
2:B:354:TYR:HB2	2:B:374:LYS:HE2	1.87	0.57
1:A:308:GLU:OE2	1:A:311:LYS:HD2	2.05	0.57
1:A:516:GLU:O	1:A:520:GLN:HG3	2.05	0.57
2:B:96:HIS:HE1	2:B:381:VAL:O	1.86	0.57
1:A:518:VAL:O	1:A:522:ILE:HG13	2.04	0.56
2:B:206:ARG:CB	2:B:206:ARG:HH11	2.17	0.56
2:B:195:ILE:O	2:B:199:ARG:HG3	2.04	0.56
2:B:246:LEU:HB2	2:B:307:ARG:HH11	1.69	0.56
2:B:331:LYS:O	2:B:424:LYS:HE3	2.04	0.56
2:B:81:ASN:ND2	2:B:154:LYS:HG3	2.21	0.56
1:A:244:ILE:O	1:A:244:ILE:HG13	2.04	0.56
1:A:246:LEU:HD11	1:A:310:LEU:HD12	1.87	0.56
2:B:291:GLU:O	2:B:293:ILE:HG23	2.05	0.56
1:A:442:VAL:HG11	1:A:485:ALA:HB2	1.88	0.56
2:B:85:GLN:HA	2:B:88:TRP:CD1	2.39	0.56
1:A:74:LEU:N	1:A:74:LEU:HD12	2.21	0.56
1:A:509:GLN:N	1:A:510:PRO:HD3	2.21	0.56
2:B:242:GLN:HE21	2:B:242:GLN:C	2.09	0.56
2:B:6:GLU:HA	2:B:6:GLU:OE1	2.06	0.56
1:A:10:VAL:HG22	1:A:124:PHE:CD1	2.42	0.55
1:A:339:TYR:CZ	1:A:352:GLY:HA3	2.41	0.55
1:A:169:GLU:HB3	1:A:170:PRO:HD3	1.88	0.55
1:A:541:GLY:HA2	1:A:546:GLU:CG	2.37	0.55
2:B:320:ASP:OD2	2:B:323:LYS:HD2	2.07	0.55
1:A:125:ARG:HG2	1:A:146:TYR:O	2.06	0.55
1:A:116:PHE:O	1:A:148:VAL:HG11	2.06	0.55
1:A:430:GLU:OE2	1:A:530:LYS:HG2	2.06	0.55
1:A:192:ASP:C	1:A:193:LEU:HD22	2.26	0.55
1:A:366:LYS:O	1:A:370:GLU:HG3	2.07	0.55
1:A:500:GLN:HG3	2:B:422:LEU:HD23	1.89	0.55
1:A:85:GLN:O	1:A:154:LYS:NZ	2.40	0.54
1:A:179:VAL:HG11	3:A:561:T27:C11	2.37	0.54

Continued on next page...

Continued from previous page...

Atom-1	Atom-2	Interatomic distance (Å)	Clash overlap (Å)
1:A:203:GLU:OE2	1:A:219:LYS:HE3	2.06	0.54
1:A:282:LEU:HB3	1:A:293:ILE:HG21	1.90	0.54
1:A:41:MET:HE3	1:A:47:ILE:HD13	1.90	0.54
1:A:13:LYS:HB3	1:A:14:PRO:HD2	1.89	0.54
3:A:561:T27:N3	3:A:561:T27:H15	2.22	0.54
1:A:434:ILE:HD12	1:A:494:ASN:OD1	2.07	0.54
2:B:47:ILE:HD12	2:B:144:TYR:CG	2.43	0.54
2:B:395:LYS:O	2:B:399:GLU:HG3	2.07	0.54
1:A:5:ILE:HG12	1:A:6:GLU:O	2.08	0.54
2:B:237:ASP:C	2:B:239:TRP:H	2.12	0.54
1:A:8:VAL:HB	1:A:159:ILE:HD12	1.90	0.53
1:A:273:GLY:HA2	1:A:332:GLN:HE22	1.73	0.53
2:B:266:TRP:CE3	2:B:426:TRP:HB3	2.43	0.53
1:A:435:VAL:HG22	2:B:290:THR:HB	1.91	0.53
2:B:308:GLU:O	2:B:312:GLU:HG2	2.07	0.53
1:A:175:ASN:OD1	1:A:201:LYS:HE2	2.09	0.53
1:A:279:LEU:O	1:A:282:LEU:HD23	2.09	0.53
2:B:279:LEU:C	2:B:281:LYS:H	2.12	0.53
2:B:387:PRO:HG2	2:B:389:PHE:CE1	2.44	0.53
1:A:12:LEU:H	1:A:12:LEU:HD22	1.73	0.52
1:A:179:VAL:HG11	3:A:561:T27:C10	2.39	0.52
2:B:362:THR:HG21	2:B:367:GLN:OE1	2.10	0.52
2:B:37:ILE:O	2:B:41:MET:HG3	2.09	0.52
1:A:547:GLN:O	1:A:550:LYS:HB3	2.09	0.52
2:B:43:LYS:O	2:B:43:LYS:HG3	2.09	0.52
2:B:244:ILE:CD1	2:B:244:ILE:H	2.22	0.52
2:B:287:LYS:HE2	2:B:291:GLU:OE2	2.08	0.52
1:A:362:THR:HG22	1:A:366:LYS:HE2	1.92	0.52
1:A:393:ILE:HB	1:A:423:VAL:CG1	2.40	0.52
2:B:7:THR:HG22	2:B:119:PRO:HG2	1.91	0.52
2:B:275:LYS:HZ3	2:B:277:ARG:HG2	1.75	0.52
2:B:277:ARG:HG3	2:B:278:GLN:N	2.25	0.52
2:B:44:GLU:OE1	2:B:46:LYS:NZ	2.39	0.52
1:A:324:ASP:OD1	1:A:388:LYS:HE2	2.10	0.51
1:A:513:SER:O	1:A:519:ASN:ND2	2.43	0.51
1:A:548:VAL:O	1:A:548:VAL:HG22	2.10	0.51
1:A:178:ILE:HD11	1:A:189:VAL:HG13	1.92	0.51
1:A:191:SER:OG	1:A:193:LEU:HD23	2.11	0.51
2:B:266:TRP:HZ2	2:B:427:TYR:CZ	2.28	0.51
2:B:61:PHE:CD1	2:B:61:PHE:N	2.78	0.51
1:A:110:ASP:O	1:A:217:PRO:HD3	2.10	0.51

Continued on next page...

Continued from previous page...

Atom-1	Atom-2	Interatomic distance (Å)	Clash overlap (Å)
1:A:221:HIS:HB2	1:A:222:GLN:HB3	1.93	0.51
1:A:257:ILE:O	1:A:261:VAL:HG23	2.11	0.51
1:A:402:TRP:CD1	2:B:331:LYS:NZ	2.77	0.51
2:B:306:ASN:O	2:B:310:LEU:HD22	2.11	0.51
1:A:155:GLY:O	1:A:159:ILE:HG12	2.11	0.51
2:B:354:TYR:HD2	2:B:374:LYS:HD3	1.71	0.51
2:B:92:LEU:HD13	2:B:93:GLY:N	2.20	0.51
1:A:447:ASN:C	1:A:447:ASN:HD22	2.13	0.50
1:A:399:GLU:O	1:A:403:THR:HG23	2.11	0.50
2:B:12:LEU:HD23	2:B:84:THR:HG22	1.93	0.50
1:A:542:ILE:HG22	1:A:543:GLY:N	2.26	0.50
2:B:80:LEU:HD23	2:B:84:THR:HG23	1.93	0.50
1:A:275:LYS:HD2	1:A:332:GLN:NE2	2.27	0.50
2:B:266:TRP:CD1	2:B:346:PHE:HE1	2.30	0.50
1:A:271:TYR:CD1	1:A:310:LEU:HD23	2.47	0.50
1:A:41:MET:CE	1:A:47:ILE:HD13	2.41	0.50
2:B:293:ILE:HG13	2:B:293:ILE:O	2.12	0.50
2:B:362:THR:CG2	2:B:367:GLN:OE1	2.59	0.50
2:B:111:VAL:HG11	2:B:187:LEU:HD22	1.94	0.49
2:B:36:GLU:O	2:B:37:ILE:C	2.50	0.49
1:A:447:ASN:C	1:A:447:ASN:ND2	2.65	0.49
1:A:324:ASP:CG	1:A:388:LYS:HE2	2.32	0.49
2:B:214:LEU:HD13	2:B:214:LEU:C	2.32	0.49
2:B:246:LEU:N	2:B:246:LEU:HD23	2.27	0.49
2:B:393:ILE:HG12	2:B:394:GLN:N	2.27	0.49
1:A:460:ASN:HA	2:B:286:THR:O	2.13	0.49
1:A:11:LYS:HG3	1:A:12:LEU:N	2.28	0.49
2:B:125:ARG:HD3	2:B:147:ASN:HA	1.94	0.49
2:B:206:ARG:CB	2:B:206:ARG:NH1	2.76	0.49
2:B:274:ILE:HG23	2:B:306:ASN:OD1	2.13	0.49
1:A:236:PRO:HA	3:A:561:T27:H18	1.93	0.49
1:A:395:LYS:HD3	1:A:414:TRP:CZ2	2.47	0.49
2:B:80:LEU:O	2:B:80:LEU:HD23	2.12	0.49
1:A:345:PRO:HA	1:A:346:PHE:HA	1.50	0.49
1:A:450:THR:HG21	1:A:452:LEU:HB2	1.94	0.49
2:B:271:TYR:CE1	2:B:314:VAL:HG22	2.48	0.49
1:A:34:LEU:HD21	1:A:62:ALA:HB2	1.95	0.48
2:B:74:LEU:HD12	2:B:75:VAL:N	2.27	0.48
2:B:257:ILE:O	2:B:261:VAL:HG23	2.12	0.48
2:B:16:MET:HB3	2:B:16:MET:HE2	1.80	0.48
1:A:244:ILE:CD1	1:A:267:ALA:HB2	2.43	0.48

Continued on next page...

Continued from previous page...

Atom-1	Atom-2	Interatomic distance (Å)	Clash overlap (Å)
2:B:194:GLU:H	2:B:197:GLN:HE21	1.61	0.48
2:B:207:GLN:O	2:B:211:ARG:HD3	2.13	0.48
1:A:307:ARG:O	1:A:311:LYS:HG3	2.14	0.48
1:A:447:ASN:HD22	1:A:448:ARG:N	2.11	0.48
1:A:542:ILE:HG23	2:B:283:LEU:CD2	2.42	0.48
1:A:544:GLY:O	1:A:548:VAL:HG12	2.14	0.48
2:B:169:GLU:CB	2:B:170:PRO:HD3	2.43	0.48
2:B:21:VAL:O	2:B:57:ASN:HB3	2.14	0.48
2:B:298:GLU:HA	2:B:298:GLU:OE2	2.13	0.48
1:A:218:ASP:C	1:A:220:LYS:H	2.16	0.47
2:B:279:LEU:C	2:B:281:LYS:N	2.66	0.47
1:A:527:LYS:NZ	1:A:528:LYS:HE2	2.29	0.47
1:A:542:ILE:O	1:A:543:GLY:C	2.53	0.47
1:A:410:TRP:CE2	2:B:363:ASN:ND2	2.82	0.47
2:B:72:ARG:HG2	2:B:73:LYS:O	2.15	0.47
1:A:92:LEU:O	1:A:92:LEU:HD22	2.14	0.47
1:A:146:TYR:CG	1:A:150:PRO:HG3	2.50	0.47
1:A:195:ILE:HG23	1:A:199:ARG:HE	1.79	0.47
2:B:354:TYR:HD2	2:B:374:LYS:CD	2.27	0.47
2:B:388:LYS:HE2	2:B:415:GLU:HB3	1.97	0.47
1:A:486:LEU:CB	1:A:524:GLN:HG2	2.43	0.47
1:A:542:ILE:HB	1:A:545:ASN:CB	2.45	0.47
1:A:473:THR:H	1:A:476:LYS:HD3	1.79	0.47
1:A:46:LYS:HD2	1:A:116:PHE:HB3	1.96	0.47
1:A:122:GLU:OE1	1:A:122:GLU:HA	2.15	0.47
1:A:206:ARG:HH12	1:A:218:ASP:HA	1.78	0.47
1:A:29:GLU:HG2	1:A:30:LYS:N	2.29	0.47
1:A:57:ASN:ND2	1:A:131:THR:OG1	2.48	0.47
1:A:281:LYS:HG2	1:A:284:ARG:CZ	2.45	0.46
1:A:404:GLU:O	1:A:404:GLU:HG2	2.13	0.46
2:B:328:GLU:HG3	2:B:390:LYS:HB2	1.96	0.46
2:B:275:LYS:HE2	2:B:276:VAL:H	1.80	0.46
1:A:153:TRP:CG	1:A:154:LYS:N	2.83	0.46
2:B:244:ILE:HG12	2:B:266:TRP:CZ3	2.50	0.46
1:A:460:ASN:ND2	2:B:288:ALA:HB2	2.30	0.46
2:B:275:LYS:NZ	2:B:277:ARG:HG2	2.31	0.46
1:A:193:LEU:HD22	1:A:193:LEU:N	2.31	0.46
1:A:374:LYS:HB3	1:A:374:LYS:HE3	1.57	0.46
2:B:30:LYS:HG3	2:B:62:ALA:HB3	1.98	0.46
1:A:527:LYS:HD3	1:A:528:LYS:HE2	1.97	0.46
2:B:295:LEU:HD22	2:B:295:LEU:N	2.30	0.46

Continued on next page...

Continued from previous page...

Atom-1	Atom-2	Interatomic distance (Å)	Clash overlap (Å)
1:A:356:ARG:NH2	1:A:358:ARG:HD2	2.31	0.46
1:A:542:ILE:HB	1:A:545:ASN:HB2	1.97	0.45
1:A:379:SER:OG	1:A:387:PRO:HG3	2.16	0.45
1:A:409:THR:O	2:B:364:ASP:HB2	2.15	0.45
2:B:303:LEU:HD22	2:B:307:ARG:NH2	2.30	0.45
1:A:543:GLY:H	2:B:283:LEU:HB3	1.80	0.45
2:B:195:ILE:HD11	2:B:233:GLU:OE1	2.16	0.45
1:A:11:LYS:HG3	1:A:12:LEU:O	2.16	0.45
1:A:286:THR:HG23	1:A:286:THR:O	2.16	0.45
1:A:343:GLN:HG3	1:A:349:LEU:CD1	2.44	0.45
2:B:393:ILE:HD13	2:B:398:TRP:HB2	1.98	0.45
2:B:400:THR:HB	2:B:401:TRP:CD1	2.52	0.45
1:A:175:ASN:O	1:A:178:ILE:HG23	2.16	0.45
1:A:225:PRO:HB3	1:A:227:PHE:CE2	2.51	0.45
1:A:538:ALA:HA	1:A:545:ASN:HD21	1.81	0.45
1:A:12:LEU:HD22	1:A:12:LEU:N	2.31	0.45
1:A:331:LYS:HB3	1:A:421:PRO:HG2	1.99	0.45
2:B:180:ILE:HA	2:B:188:TYR:O	2.17	0.45
2:B:73:LYS:HG3	2:B:73:LYS:HZ3	1.53	0.45
1:A:221:HIS:HA	1:A:222:GLN:HA	1.68	0.45
2:B:312:GLU:HB3	2:B:313:PRO:HD2	1.99	0.45
1:A:228:LEU:HD12	1:A:242:GLN:OE1	2.17	0.45
2:B:368:LEU:O	2:B:372:VAL:HG23	2.16	0.45
2:B:23:GLN:HE22	2:B:60:VAL:H	1.64	0.45
2:B:88:TRP:CH2	2:B:154:LYS:HD2	2.52	0.45
1:A:24:TRP:CD2	1:A:25:PRO:HD2	2.51	0.44
1:A:402:TRP:CG	1:A:403:THR:N	2.84	0.44
2:B:96:HIS:CE1	2:B:381:VAL:O	2.69	0.44
1:A:108:VAL:HG23	1:A:227:PHE:CE1	2.52	0.44
1:A:47:ILE:HD12	1:A:144:TYR:CD1	2.52	0.44
2:B:64:LYS:HE2	2:B:64:LYS:HB3	1.73	0.44
2:B:37:ILE:HG21	2:B:73:LYS:HB2	1.98	0.44
1:A:358:ARG:HH12	2:B:394:GLN:HG3	1.78	0.44
2:B:65:LYS:O	2:B:407:GLN:CG	2.62	0.44
2:B:47:ILE:O	2:B:47:ILE:HG13	2.18	0.44
1:A:223:LYS:HA	1:A:223:LYS:CE	2.39	0.44
2:B:244:ILE:N	2:B:244:ILE:CD1	2.78	0.44
2:B:237:ASP:C	2:B:239:TRP:N	2.71	0.44
1:A:195:ILE:CG2	1:A:199:ARG:HE	2.31	0.44
1:A:21:VAL:HB	1:A:59:PRO:HD3	2.00	0.44
1:A:227:PHE:HB3	3:A:561:T27:N6	2.32	0.44

Continued on next page...

Continued from previous page...

Atom-1	Atom-2	Interatomic distance (Å)	Clash overlap (Å)
1:A:279:LEU:HA	1:A:282:LEU:HD23	1.99	0.44
1:A:234:LEU:HD22	1:A:234:LEU:N	2.33	0.43
1:A:156:SER:N	1:A:157:PRO:HD2	2.33	0.43
1:A:279:LEU:HA	1:A:282:LEU:CD2	2.48	0.43
1:A:457:TYR:HA	1:A:548:VAL:HG21	1.99	0.43
2:B:13:LYS:CE	2:B:85:GLN:HB3	2.35	0.43
2:B:320:ASP:HA	2:B:321:PRO:HD2	1.80	0.43
2:B:56:TYR:O	2:B:143:ARG:NH2	2.51	0.43
2:B:153:TRP:CH2	2:B:155:GLY:HA3	2.53	0.43
1:A:63:ILE:HG22	1:A:74:LEU:CD1	2.49	0.43
1:A:54:ASN:O	1:A:143:ARG:NH2	2.52	0.43
1:A:479:LEU:HA	1:A:479:LEU:HD12	1.80	0.43
1:A:5:ILE:CG1	1:A:6:GLU:N	2.82	0.43
2:B:268:SER:C	2:B:270:ILE:H	2.22	0.43
2:B:422:LEU:O	2:B:425:LEU:HG	2.19	0.43
2:B:379:SER:OG	2:B:387:PRO:HD3	2.19	0.43
2:B:51:GLY:HA3	2:B:53:GLU:OE2	2.19	0.43
1:A:183:TYR:OH	1:A:230:MET:HE1	2.19	0.43
1:A:457:TYR:C	1:A:457:TYR:CD1	2.92	0.43
2:B:420:PRO:HG2	2:B:423:VAL:CG2	2.49	0.43
1:A:120:LEU:HD22	1:A:121:ASP:H	1.84	0.42
1:A:501:TYR:O	1:A:505:ILE:HG13	2.19	0.42
2:B:252:TRP:HD1	2:B:295:LEU:HD12	1.84	0.42
2:B:69:THR:O	2:B:70:LYS:HG3	2.19	0.42
1:A:484:LEU:HD23	1:A:487:GLN:HE21	1.84	0.42
2:B:169:GLU:HB3	2:B:170:PRO:HD3	2.01	0.42
2:B:96:HIS:HA	2:B:97:PRO:HD3	1.90	0.42
1:A:469:LEU:HD21	1:A:480:GLN:CG	2.45	0.42
2:B:237:ASP:O	2:B:239:TRP:N	2.52	0.42
1:A:26:LEU:HD12	1:A:133:PRO:HG3	2.01	0.42
2:B:28:GLU:HG2	2:B:32:LYS:HE2	2.01	0.42
2:B:42:GLU:C	2:B:44:GLU:H	2.23	0.42
1:A:228:LEU:HD22	1:A:228:LEU:N	2.34	0.42
1:A:278:GLN:HB2	1:A:302:GLU:CD	2.39	0.42
1:A:520:GLN:C	1:A:522:ILE:N	2.73	0.42
1:A:472:THR:HB	1:A:476:LYS:HB2	2.01	0.42
1:A:529:GLU:O	1:A:530:LYS:HG3	2.20	0.41
2:B:136:ASN:HB3	2:B:138:GLU:HG3	2.02	0.41
1:A:218:ASP:HB3	1:A:221:HIS:CE1	2.54	0.41
1:A:533:LEU:HD22	1:A:534:ALA:N	2.34	0.41
2:B:187:LEU:HA	2:B:187:LEU:HD12	1.86	0.41

Continued on next page...

Continued from previous page...

Atom-1	Atom-2	Interatomic distance (Å)	Clash overlap (Å)
1:A:520:GLN:O	1:A:521:ILE:C	2.59	0.41
2:B:242:GLN:CA	2:B:242:GLN:HE21	2.30	0.41
2:B:24:TRP:CZ3	2:B:61:PHE:CD1	3.09	0.41
2:B:395:LYS:O	2:B:399:GLU:CG	2.69	0.41
1:A:178:ILE:CD1	1:A:179:VAL:N	2.74	0.41
2:B:388:LYS:C	2:B:388:LYS:HD3	2.41	0.41
1:A:402:TRP:C	1:A:402:TRP:CD1	2.90	0.41
1:A:402:TRP:HD1	2:B:331:LYS:NZ	2.17	0.41
1:A:209:LEU:HA	1:A:209:LEU:HD12	1.82	0.41
1:A:319:TYR:CZ	1:A:321:PRO:HA	2.56	0.41
1:A:246:LEU:HA	1:A:247:PRO:HD3	1.87	0.41
1:A:53:GLU:O	1:A:55:PRO:HD3	2.20	0.41
2:B:257:ILE:CG2	2:B:283:LEU:HD11	2.51	0.41
2:B:13:LYS:HE3	2:B:85:GLN:CB	2.38	0.41
1:A:178:ILE:HD11	1:A:180:ILE:HD13	2.03	0.40
1:A:77:PHE:O	1:A:78:ARG:C	2.59	0.40
1:A:94:ILE:CG2	1:A:95:PRO:HD2	2.47	0.40
2:B:246:LEU:HB2	2:B:307:ARG:NH1	2.36	0.40
2:B:282:LEU:H	2:B:282:LEU:HG	1.66	0.40
1:A:437:ALA:HB1	1:A:492:GLU:O	2.21	0.40
1:A:91:GLN:NE2	1:A:183:TYR:CD1	2.89	0.40
1:A:220:LYS:O	1:A:220:LYS:HG2	2.21	0.40
1:A:442:VAL:CG1	1:A:485:ALA:HB2	2.52	0.40
2:B:88:TRP:CE2	2:B:154:LYS:HD2	2.56	0.40
2:B:274:ILE:HA	2:B:306:ASN:OD1	2.22	0.40
2:B:41:MET:HE2	2:B:47:ILE:HG23	2.04	0.40
1:A:8:VAL:O	1:A:121:ASP:HB2	2.22	0.40
1:A:442:VAL:HG12	1:A:457:TYR:HB3	2.02	0.40
1:A:17:ASP:O	1:A:83:ARG:NE	2.55	0.40
1:A:328:GLU:HG2	1:A:390:LYS:HB2	2.03	0.40
1:A:64:LYS:O	1:A:65:LYS:C	2.60	0.40

There are no symmetry-related clashes.

5.3 Torsion angles

5.3.1 Protein backbone

In the following table, the Percentiles column shows the percent Ramachandran outliers of the chain as a percentile score with respect to all X-ray entries followed by that with respect to entries of similar resolution.

The Analysed column shows the number of residues for which the backbone conformation was analysed, and the total number of residues.

Mol	Chain	Analysed	Favoured	Allowed	Outliers	Percentiles	
1	A	550/560 (98%)	501 (91%)	43 (8%)	6 (1%)	16	45
2	B	398/440 (90%)	367 (92%)	25 (6%)	6 (2%)	11	36
All	All	948/1000 (95%)	868 (92%)	68 (7%)	12 (1%)	13	40

All (12) Ramachandran outliers are listed below:

Mol	Chain	Res	Type
1	A	65	LYS
1	A	90	VAL
2	B	65	LYS
1	A	114	ALA
1	A	543	GLY
2	B	12	LEU
2	B	238	LYS
2	B	363	ASN
1	A	443	ASP
2	B	37	ILE
2	B	346	PHE
1	A	510	PRO

5.3.2 Protein sidechains [i](#)

In the following table, the Percentiles column shows the percent sidechain outliers of the chain as a percentile score with respect to all X-ray entries followed by that with respect to entries of similar resolution.

The Analysed column shows the number of residues for which the sidechain conformation was analysed, and the total number of residues.

Mol	Chain	Analysed	Rotameric	Outliers	Percentiles	
1	A	494/500 (99%)	442 (90%)	52 (10%)	7	22
2	B	366/400 (92%)	329 (90%)	37 (10%)	8	24
All	All	860/900 (96%)	771 (90%)	89 (10%)	8	23

All (89) residues with a non-rotameric sidechain are listed below:

Mol	Chain	Res	Type
1	A	10	VAL

Continued on next page...

Continued from previous page...

Mol	Chain	Res	Type
1	A	11	LYS
1	A	16	MET
1	A	29	GLU
1	A	40	GLU
1	A	43	LYS
1	A	44	GLU
1	A	49	LYS
1	A	70	LYS
1	A	73	LYS
1	A	92	LEU
1	A	113	ASP
1	A	120	LEU
1	A	122	GLU
1	A	137	ASN
1	A	161	GLN
1	A	166	LYS
1	A	173	LYS
1	A	177	ASP
1	A	178	ILE
1	A	182	GLN
1	A	192	ASP
1	A	199	ARG
1	A	204	GLU
1	A	205	LEU
1	A	207	GLN
1	A	209	LEU
1	A	264	LEU
1	A	275	LYS
1	A	281	LYS
1	A	283	LEU
1	A	289	LEU
1	A	298	GLU
1	A	301	LEU
1	A	303	LEU
1	A	325	LEU
1	A	357	MET
1	A	361	HIS
1	A	374	LYS
1	A	379	SER
1	A	402	TRP
1	A	404	GLU
1	A	447	ASN

Continued on next page...

Continued from previous page...

Mol	Chain	Res	Type
1	A	476	LYS
1	A	479	LEU
1	A	503	LEU
1	A	507	GLN
1	A	517	LEU
1	A	523	GLU
1	A	527	LYS
1	A	533	LEU
1	A	539	HIS
2	B	11	LYS
2	B	16	MET
2	B	24	TRP
2	B	29	GLU
2	B	30	LYS
2	B	40	GLU
2	B	61	PHE
2	B	65	LYS
2	B	91	GLN
2	B	92	LEU
2	B	109	LEU
2	B	161	GLN
2	B	169	GLU
2	B	175	ASN
2	B	194	GLU
2	B	205	LEU
2	B	206	ARG
2	B	209	LEU
2	B	234	LEU
2	B	242	GLN
2	B	250	ASP
2	B	259	LYS
2	B	260	LEU
2	B	265	ASN
2	B	275	LYS
2	B	279	LEU
2	B	282	LEU
2	B	292	VAL
2	B	295	LEU
2	B	298	GLU
2	B	305	GLU
2	B	344	GLU
2	B	364	ASP

Continued on next page...

Continued from previous page...

Mol	Chain	Res	Type
2	B	368	LEU
2	B	388	LYS
2	B	395	LYS
2	B	414	TRP

Some sidechains can be flipped to improve hydrogen bonding and reduce clashes. All (25) such sidechains are listed below:

Mol	Chain	Res	Type
1	A	57	ASN
1	A	145	GLN
1	A	221	HIS
1	A	258	GLN
1	A	332	GLN
1	A	336	GLN
1	A	367	GLN
1	A	373	GLN
1	A	447	ASN
1	A	475	GLN
1	A	500	GLN
1	A	512	GLN
1	A	545	ASN
2	B	91	GLN
2	B	96	HIS
2	B	197	GLN
2	B	208	HIS
2	B	242	GLN
2	B	255	ASN
2	B	334	GLN
2	B	348	ASN
2	B	394	GLN
2	B	407	GLN
2	B	418	ASN
2	B	428	GLN

5.3.3 RNA

There are no RNA molecules in this entry.

5.4 Non-standard residues in protein, DNA, RNA chains [i](#)

There are no non-standard protein/DNA/RNA residues in this entry.

5.5 Carbohydrates [i](#)

There are no carbohydrates in this entry.

5.6 Ligand geometry [i](#)

6 ligands are modelled in this entry.

In the following table, the Counts columns list the number of bonds (or angles) for which Mogul statistics could be retrieved, the number of bonds (or angles) that are observed in the model and the number of bonds (or angles) that are defined in the Chemical Component Dictionary. The Link column lists molecule types, if any, to which the group is linked. The Z score for a bond length (or angle) is the number of standard deviations the observed value is removed from the expected value. A bond length (or angle) with $|Z| > 2$ is considered an outlier worth inspection. RMSZ is the root-mean-square of all Z scores of the bond lengths (or angles).

Mol	Type	Chain	Res	Link	Bond lengths			Bond angles		
					Counts	RMSZ	# Z > 2	Counts	RMSZ	# Z > 2
3	T27	A	561	-	30,30,30	3.03	16 (53%)	39,40,40	2.30	6 (15%)
4	SO4	A	562	-	4,4,4	0.37	0	6,6,6	0.26	0
4	SO4	A	563	-	4,4,4	0.43	0	6,6,6	0.10	0
4	SO4	A	564	-	4,4,4	0.34	0	6,6,6	0.12	0
4	SO4	A	565	-	4,4,4	0.38	0	6,6,6	0.11	0
4	SO4	B	441	-	4,4,4	0.41	0	6,6,6	0.27	0

In the following table, the Chirals column lists the number of chiral outliers, the number of chiral centers analysed, the number of these observed in the model and the number defined in the Chemical Component Dictionary. Similar counts are reported in the Torsion and Rings columns. '-' means no outliers of that kind were identified.

Mol	Type	Chain	Res	Link	Chirals	Torsions	Rings
3	T27	A	561	-	-	0/13/14/14	0/3/3/3
4	SO4	A	562	-	-	0/0/0/0	0/0/0/0
4	SO4	A	563	-	-	0/0/0/0	0/0/0/0
4	SO4	A	564	-	-	0/0/0/0	0/0/0/0
4	SO4	A	565	-	-	0/0/0/0	0/0/0/0
4	SO4	B	441	-	-	0/0/0/0	0/0/0/0

All (16) bond length outliers are listed below:

Mol	Chain	Res	Type	Atoms	Z	Observed(Å)	Ideal(Å)
3	A	561	T27	C10-C9	2.00	1.42	1.38
3	A	561	T27	C15-C14	2.05	1.42	1.38
3	A	561	T27	C12-N3	2.26	1.42	1.34
3	A	561	T27	C4-C3	2.40	1.43	1.39
3	A	561	T27	C12-N4	3.21	1.42	1.36
3	A	561	T27	C18-C13	3.22	1.46	1.39
3	A	561	T27	C4-C5	3.25	1.44	1.39
3	A	561	T27	C17-C16	3.25	1.44	1.39
3	A	561	T27	C2-C3	3.55	1.45	1.39
3	A	561	T27	C15-C16	3.86	1.45	1.39
3	A	561	T27	C18-C17	4.11	1.46	1.38
3	A	561	T27	C9-N2	4.29	1.43	1.34
3	A	561	T27	C11-N3	4.43	1.43	1.34
3	A	561	T27	C6-C5	5.07	1.47	1.40
3	A	561	T27	C6-C1	5.47	1.48	1.40
3	A	561	T27	C12-N2	7.85	1.44	1.34

All (6) bond angle outliers are listed below:

Mol	Chain	Res	Type	Atoms	Z	Observed(°)	Ideal(°)
3	A	561	T27	N2-C12-N3	-10.04	117.11	126.66
3	A	561	T27	C6-N1-C11	-3.12	118.53	124.08
3	A	561	T27	C10-C9-N2	-2.43	120.97	123.92
3	A	561	T27	C9-C10-C11	2.08	118.17	116.78
3	A	561	T27	C12-N3-C11	3.29	122.27	116.73
3	A	561	T27	C9-N2-C12	6.75	121.05	115.42

There are no chirality outliers.

There are no torsion outliers.

There are no ring outliers.

1 monomer is involved in 5 short contacts:

Mol	Chain	Res	Type	Clashes	Symm-Clashes
3	A	561	T27	5	0

5.7 Other polymers [i](#)

There are no such residues in this entry.

5.8 Polymer linkage issues

There are no chain breaks in this entry.

6 Fit of model and data

6.1 Protein, DNA and RNA chains

In the following table, the column labelled ‘#RSRZ > 2’ contains the number (and percentage) of RSRZ outliers, followed by percent RSRZ outliers for the chain as percentile scores relative to all X-ray entries and entries of similar resolution. The OWAB column contains the minimum, median, 95th percentile and maximum values of the occupancy-weighted average B-factor per residue. The column labelled ‘Q < 0.9’ lists the number of (and percentage) of residues with an average occupancy less than 0.9.

Mol	Chain	Analysed	<RSRZ>	#RSRZ>2	OWAB(Å ²)	Q<0.9
1	A	552/560 (98%)	0.12	11 (1%) 65 56	38, 63, 100, 130	0
2	B	404/440 (91%)	0.02	9 (2%) 62 52	34, 59, 102, 118	0
All	All	956/1000 (95%)	0.08	20 (2%) 63 54	34, 62, 101, 130	0

All (20) RSRZ outliers are listed below:

Mol	Chain	Res	Type	RSRZ
1	A	222	GLN	5.4
1	A	194	GLU	3.2
2	B	88	TRP	3.1
2	B	86	ASP	2.9
2	B	252	TRP	2.9
1	A	425	LEU	2.9
1	A	193	LEU	2.8
1	A	426	TRP	2.7
2	B	361	HIS	2.7
1	A	216	THR	2.6
1	A	220	LYS	2.6
1	A	195	ILE	2.6
2	B	87	PHE	2.4
2	B	266	TRP	2.4
1	A	217	PRO	2.3
1	A	219	LYS	2.3
2	B	92	LEU	2.3
2	B	67	ASP	2.3
1	A	551	LEU	2.2
2	B	362	THR	2.1

6.2 Non-standard residues in protein, DNA, RNA chains [i](#)

There are no non-standard protein/DNA/RNA residues in this entry.

6.3 Carbohydrates [i](#)

There are no carbohydrates in this entry.

6.4 Ligands [i](#)

In the following table, the Atoms column lists the number of modelled atoms in the group and the number defined in the chemical component dictionary. The B-factors column lists the minimum, median, 95th percentile and maximum values of B factors of atoms in the group. The column labelled 'Q< 0.9' lists the number of atoms with occupancy less than 0.9.

Mol	Type	Chain	Res	Atoms	RSCC	RSR	B-factors(Å ²)	Q<0.9
4	SO4	A	564	5/5	0.76	0.25	131,131,131,132	0
4	SO4	A	563	5/5	0.91	0.12	91,92,94,95	0
4	SO4	A	565	5/5	0.92	0.14	113,113,113,114	0
4	SO4	B	441	5/5	0.95	0.17	110,110,110,111	0
3	T27	A	561	28/28	0.95	0.26	36,44,66,76	0
4	SO4	A	562	5/5	0.96	0.15	64,66,68,69	0

6.5 Other polymers [i](#)

There are no such residues in this entry.