



Full wwPDB X-ray Structure Validation Report ⓘ

May 27, 2024 – 08:58 PM EDT

PDB ID : 6ME6
Title : XFEL crystal structure of human melatonin receptor MT2 in complex with 2-phenylmelatonin
Authors : Johansson, L.C.; Stauch, B.; McCorvy, J.; Han, G.W.; Patel, N.; Batyuk, A.; Gati, C.; Li, C.; Grandner, J.; Hao, S.; Olsen, R.H.J.; Tribo, A.R.; Zaare, S.; Zhu, L.; Zatsepin, N.A.; Weierstall, U.; Liu, W.; Roth, B.L.; Katritch, V.; Cherezov, V.
Deposited on : 2018-09-05
Resolution : 2.80 Å(reported)

This is a Full wwPDB X-ray Structure Validation Report for a publicly released PDB entry.

We welcome your comments at validation@mail.wwpdb.org

A user guide is available at

<https://www.wwpdb.org/validation/2017/XrayValidationReportHelp>

with specific help available everywhere you see the ⓘ symbol.

The types of validation reports are described at

<http://www.wwpdb.org/validation/2017/FAQs#types>.

The following versions of software and data (see [references ⓘ](#)) were used in the production of this report:

MolProbity : 4.02b-467
Mogul : 1.8.5 (274361), CSD as541be (2020)
Xtriage (Phenix) : 1.13
EDS : 2.36.2
buster-report : 1.1.7 (2018)
Percentile statistics : 20191225.v01 (using entries in the PDB archive December 25th 2019)
Refmac : 5.8.0158
CCP4 : 7.0.044 (Gargrove)
Ideal geometry (proteins) : Engh & Huber (2001)

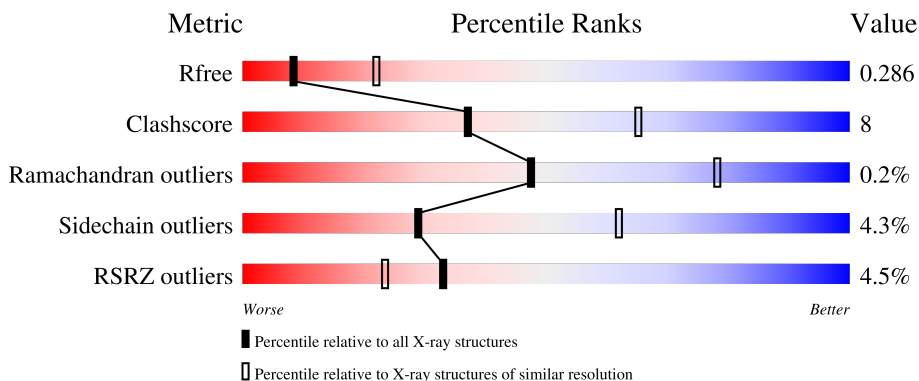
1 Overall quality at a glance

The following experimental techniques were used to determine the structure:

X-RAY DIFFRACTION

The reported resolution of this entry is 2.80 Å.

Percentile scores (ranging between 0-100) for global validation metrics of the entry are shown in the following graphic. The table shows the number of entries on which the scores are based.



Metric	Whole archive (#Entries)	Similar resolution (#Entries, resolution range(Å))
R_{free}	130704	3140 (2.80-2.80)
Clashscore	141614	3569 (2.80-2.80)
Ramachandran outliers	138981	3498 (2.80-2.80)
Sidechain outliers	138945	3500 (2.80-2.80)
RSRZ outliers	127900	3078 (2.80-2.80)

The table below summarises the geometric issues observed across the polymeric chains and their fit to the electron density. The red, orange, yellow and green segments of the lower bar indicate the fraction of residues that contain outliers for ≥ 3 , 2, 1 and 0 types of geometric quality criteria respectively. A grey segment represents the fraction of residues that are not modelled. The numeric value for each fraction is indicated below the corresponding segment, with a dot representing fractions $\leq 5\%$. The upper red bar (where present) indicates the fraction of residues that have poor fit to the electron density. The numeric value is given above the bar.

Mol	Chain	Length	Quality of chain
1	A	460	 2% 81% 16% ..
1	B	460	 6% 73% 12% • 14%

Ideal geometry (DNA, RNA) : Parkinson et al. (1996)
Validation Pipeline (wwPDB-VP) : 2.36.2

2 Entry composition

There are 4 unique types of molecules in this entry. The entry contains 6234 atoms, of which 0 are hydrogens and 0 are deuteriums.

In the tables below, the ZeroOcc column contains the number of atoms modelled with zero occupancy, the AltConf column contains the number of residues with at least one atom in alternate conformation and the Trace column contains the number of residues modelled with at most 2 atoms.

- Molecule 1 is a protein called Soluble cytochrome b562,Melatonin receptor type 1B,Rubredoxin.

Mol	Chain	Residues	Atoms					ZeroOcc	AltConf	Trace
			Total	C	N	O	S			
1	A	448	3326	2171	537	600	18	0	0	0
1	B	394	2850	1867	467	505	11	0	0	0

There are 32 discrepancies between the modelled and reference sequences:

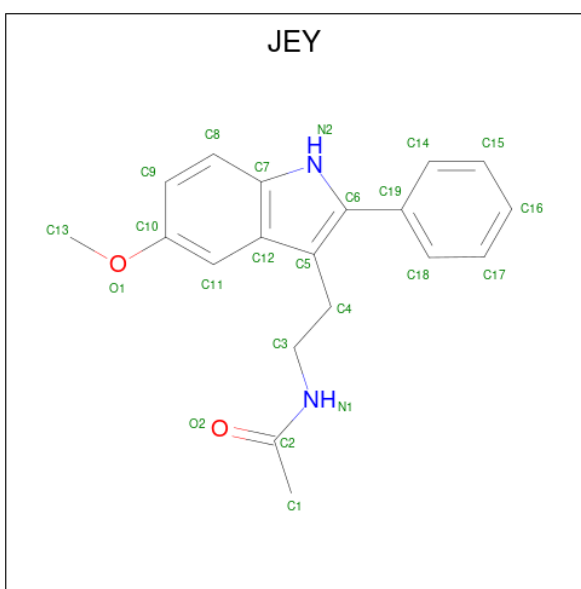
Chain	Residue	Modelled	Actual	Comment	Reference
A	2007	TRP	MET	engineered mutation	UNP P0ABE7
A	2102	ILE	HIS	engineered mutation	UNP P0ABE7
A	2106	LEU	ARG	engineered mutation	UNP P0ABE7
A	31	GLY	-	linker	UNP P0ABE7
A	32	ASP	-	linker	UNP P0ABE7
A	33	GLY	-	linker	UNP P0ABE7
A	34	ALA	-	linker	UNP P0ABE7
A	37	SER	PRO	engineered mutation	UNP P49286
A	86	ASN	ASP	engineered mutation	UNP P49286
A	108	PHE	LEU	engineered mutation	UNP P49286
A	129	TRP	PHE	engineered mutation	UNP P49286
A	137	ASP	ASN	engineered mutation	UNP P49286
A	140	LEU	CYS	engineered mutation	UNP P49286
A	264	PHE	TRP	engineered mutation	UNP P49286
A	305	PRO	ALA	engineered mutation	UNP P49286
A	312	ASP	ASN	engineered mutation	UNP P49286
B	2007	TRP	MET	engineered mutation	UNP P0ABE7
B	2102	ILE	HIS	engineered mutation	UNP P0ABE7
B	2106	LEU	ARG	engineered mutation	UNP P0ABE7
B	31	GLY	-	linker	UNP P0ABE7
B	32	ASP	-	linker	UNP P0ABE7
B	33	GLY	-	linker	UNP P0ABE7
B	34	ALA	-	linker	UNP P0ABE7
B	37	SER	PRO	engineered mutation	UNP P49286
B	86	ASN	ASP	engineered mutation	UNP P49286

Continued on next page...

Continued from previous page...

Chain	Residue	Modelled	Actual	Comment	Reference
B	108	PHE	LEU	engineered mutation	UNP P49286
B	129	TRP	PHE	engineered mutation	UNP P49286
B	137	ASP	ASN	engineered mutation	UNP P49286
B	140	LEU	CYS	engineered mutation	UNP P49286
B	264	PHE	TRP	engineered mutation	UNP P49286
B	305	PRO	ALA	engineered mutation	UNP P49286
B	312	ASP	ASN	engineered mutation	UNP P49286

- Molecule 2 is N-[2-(5-methoxy-2-phenyl-1H-indol-3-yl)ethyl]acetamide (three-letter code: JEY) (formula: C₁₉H₂₀N₂O₂).

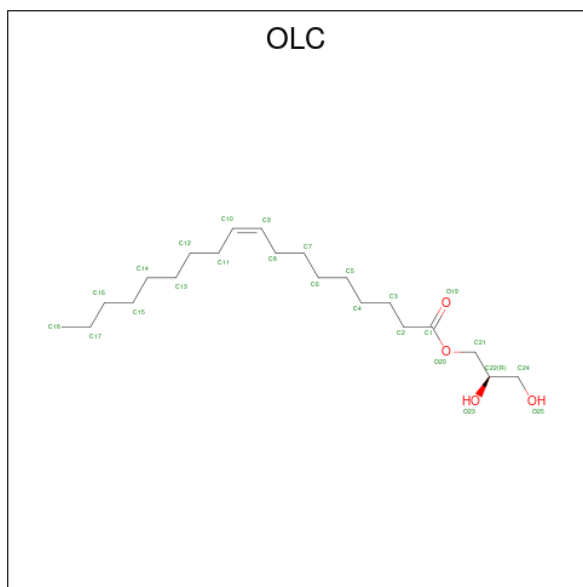


Mol	Chain	Residues	Atoms			ZeroOcc	AltConf	
			Total	C	N			O
2	A	1	23	19	2	2	0	0
2	B	1	23	19	2	2	0	0

- Molecule 3 is ZINC ION (three-letter code: ZN) (formula: Zn).

Mol	Chain	Residues	Atoms		ZeroOcc	AltConf
			Total	Zn		
3	A	1	1	1	0	0

- Molecule 4 is (2R)-2,3-dihydroxypropyl (9Z)-octadec-9-enoate (three-letter code: OLC) (formula: C₂₁H₄₀O₄).

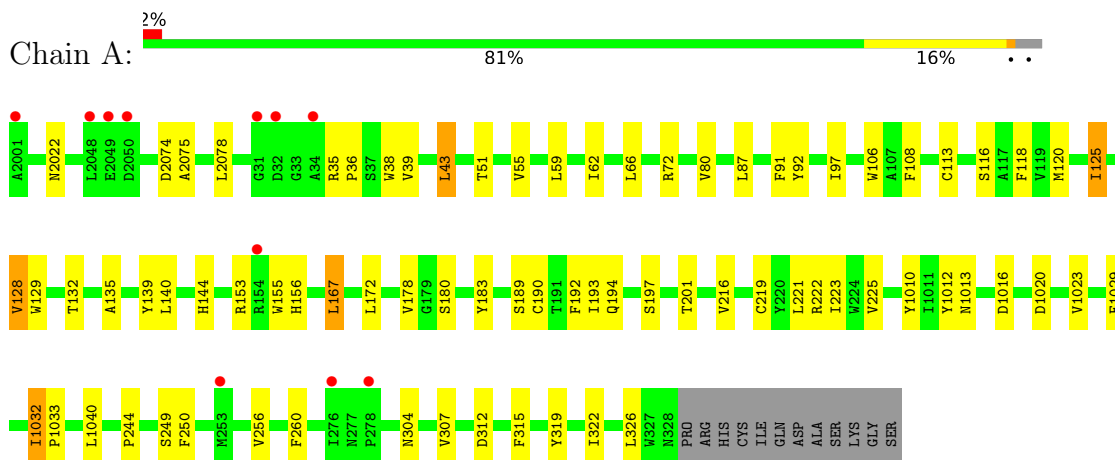


Mol	Chain	Residues	Atoms	ZeroOcc	AltConf
4	B	1	Total C O 11 7 4	0	0

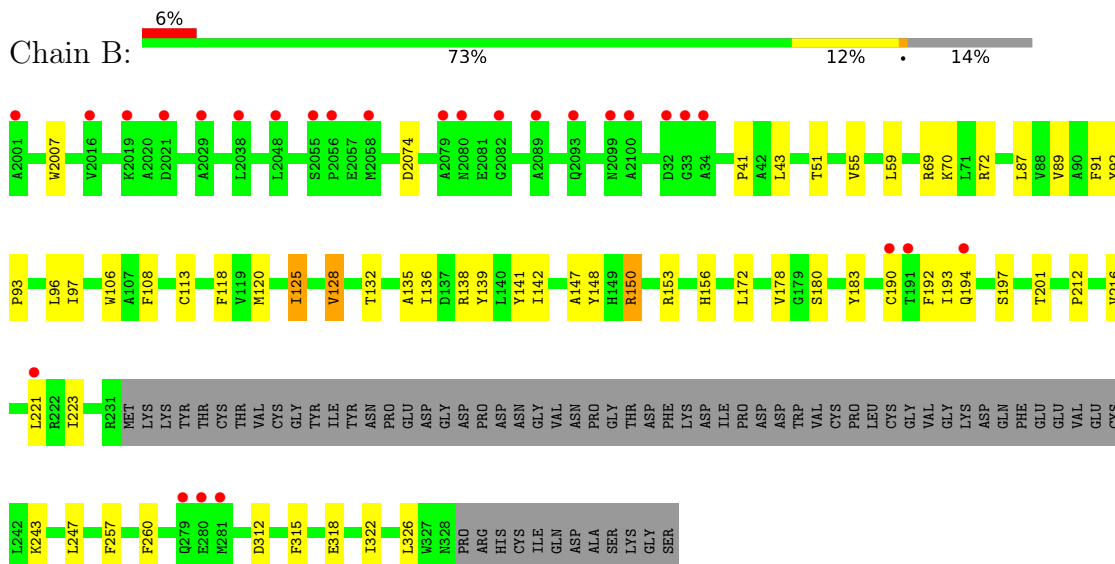
3 Residue-property plots [i](#)

These plots are drawn for all protein, RNA, DNA and oligosaccharide chains in the entry. The first graphic for a chain summarises the proportions of the various outlier classes displayed in the second graphic. The second graphic shows the sequence view annotated by issues in geometry and electron density. Residues are color-coded according to the number of geometric quality criteria for which they contain at least one outlier: green = 0, yellow = 1, orange = 2 and red = 3 or more. A red dot above a residue indicates a poor fit to the electron density ($RSRZ > 2$). Stretches of 2 or more consecutive residues without any outlier are shown as a green connector. Residues present in the sample, but not in the model, are shown in grey.

- Molecule 1: Soluble cytochrome b562,Melatonin receptor type 1B,Rubredoxin



- Molecule 1: Soluble cytochrome b562,Melatonin receptor type 1B,Rubredoxin



4 Data and refinement statistics

Property	Value	Source
Space group	P 1 21 1	Depositor
Cell constants a, b, c, α , β , γ	69.50Å 146.18Å 77.28Å 90.00° 111.72° 90.00°	Depositor
Resolution (Å)	21.99 – 2.80 21.91 – 2.80	Depositor EDS
% Data completeness (in resolution range)	100.0 (21.99-2.80) 100.0 (21.91-2.80)	Depositor EDS
R_{merge}	(Not available)	Depositor
R_{sym}	(Not available)	Depositor
$\langle I/\sigma(I) \rangle$ ¹	1.17 (at 2.79Å)	Xtrriage
Refinement program	BUSTER 2.10.2	Depositor
R, R_{free}	0.219 , 0.249 0.257 , 0.286	Depositor DCC
R_{free} test set	1759 reflections (5.00%)	wwPDB-VP
Wilson B-factor (Å ²)	92.6	Xtrriage
Anisotropy	0.329	Xtrriage
Bulk solvent k_{sol} (e/Å ³), B_{sol} (Å ²)	0.29 , 127.2	EDS
L-test for twinning ²	$\langle L \rangle = 0.46$, $\langle L^2 \rangle = 0.29$	Xtrriage
Estimated twinning fraction	No twinning to report.	Xtrriage
F_o, F_c correlation	0.95	EDS
Total number of atoms	6234	wwPDB-VP
Average B, all atoms (Å ²)	130.0	wwPDB-VP

Xtrriage's analysis on translational NCS is as follows: *The largest off-origin peak in the Patterson function is 6.77% of the height of the origin peak. No significant pseudotranslation is detected.*

¹Intensities estimated from amplitudes.

²Theoretical values of $\langle |L| \rangle$, $\langle L^2 \rangle$ for acentric reflections are 0.5, 0.333 respectively for untwinned datasets, and 0.375, 0.2 for perfectly twinned datasets.

5 Model quality [i](#)

5.1 Standard geometry [i](#)

Bond lengths and bond angles in the following residue types are not validated in this section: OLC, ZN, JEY

The Z score for a bond length (or angle) is the number of standard deviations the observed value is removed from the expected value. A bond length (or angle) with $|Z| > 5$ is considered an outlier worth inspection. RMSZ is the root-mean-square of all Z scores of the bond lengths (or angles).

Mol	Chain	Bond lengths		Bond angles	
		RMSZ	# Z >5	RMSZ	# Z >5
1	A	0.44	0/3413	0.59	0/4697
1	B	0.43	0/2921	0.57	0/4026
All	All	0.44	0/6334	0.58	0/8723

There are no bond length outliers.

There are no bond angle outliers.

There are no chirality outliers.

There are no planarity outliers.

5.2 Too-close contacts [i](#)

In the following table, the Non-H and H(model) columns list the number of non-hydrogen atoms and hydrogen atoms in the chain respectively. The H(added) column lists the number of hydrogen atoms added and optimized by MolProbity. The Clashes column lists the number of clashes within the asymmetric unit, whereas Symm-Clashes lists symmetry-related clashes.

Mol	Chain	Non-H	H(model)	H(added)	Clashes	Symm-Clashes
1	A	3326	0	3119	52	0
1	B	2850	0	2639	43	0
2	A	23	0	0	0	0
2	B	23	0	0	0	0
3	A	1	0	0	0	0
4	B	11	0	11	0	0
All	All	6234	0	5769	94	0

The all-atom clashscore is defined as the number of clashes found per 1000 atoms (including hydrogen atoms). The all-atom clashscore for this structure is 8.

All (94) close contacts within the same asymmetric unit are listed below, sorted by their clash

magnitude.

Atom-1	Atom-2	Interatomic distance (Å)	Clash overlap (Å)
1:B:106:TRP:CZ3	1:B:190:CYS:HB2	2.10	0.86
1:B:106:TRP:HE1	1:B:108:PHE:HB2	1.42	0.84
1:A:106:TRP:CZ3	1:A:190:CYS:HB2	2.13	0.83
1:A:106:TRP:HE1	1:A:108:PHE:HB2	1.49	0.78
1:A:139:TYR:HA	1:A:223:ILE:HD11	1.65	0.78
1:B:139:TYR:HA	1:B:223:ILE:HD11	1.68	0.76
1:A:304:ASN:HA	1:A:307:VAL:HG12	1.71	0.73
1:B:183:TYR:HA	1:B:190:CYS:HA	1.71	0.72
1:A:319:TYR:HA	1:A:322:ILE:HD12	1.73	0.70
1:A:183:TYR:HA	1:A:190:CYS:HA	1.73	0.70
1:B:192:PHE:CZ	1:B:201:THR:HG22	2.29	0.68
1:A:192:PHE:CZ	1:A:201:THR:HG22	2.32	0.65
1:B:93:PRO:HB2	1:B:120:MET:HE3	1.82	0.61
1:A:87:LEU:HD22	1:A:91:PHE:HE2	1.66	0.60
1:B:135:ALA:HB3	1:B:216:VAL:HG22	1.84	0.60
1:A:1010:TYR:HB2	1:A:1040:LEU:HD12	1.84	0.59
1:A:1012:TYR:CD2	1:A:1029:PHE:HD1	2.21	0.59
1:B:106:TRP:CE3	1:B:190:CYS:HB2	2.38	0.58
1:B:322:ILE:O	1:B:326:LEU:HD12	2.04	0.57
1:B:194:GLN:HA	1:B:201:THR:HG21	1.85	0.57
1:B:106:TRP:HZ3	1:B:190:CYS:H	1.51	0.56
1:A:106:TRP:CE3	1:A:190:CYS:HB2	2.41	0.56
1:B:106:TRP:NE1	1:B:108:PHE:HB2	2.16	0.56
1:A:62:ILE:HD12	1:A:80:VAL:HG13	1.88	0.56
1:B:125:ILE:HD13	1:B:172:LEU:HD11	1.87	0.55
1:A:125:ILE:HD13	1:A:172:LEU:HD11	1.90	0.54
1:B:138:ARG:HH11	1:B:138:ARG:HA	1.72	0.54
1:A:132:THR:HG22	1:A:216:VAL:HG23	1.90	0.53
1:A:304:ASN:HA	1:A:307:VAL:CG1	2.38	0.53
1:B:106:TRP:CZ3	1:B:190:CYS:CB	2.90	0.52
1:A:128:VAL:HG13	1:A:260:PHE:CE2	2.45	0.52
1:B:93:PRO:HB2	1:B:120:MET:CE	2.40	0.52
1:A:192:PHE:HZ	1:A:201:THR:HG22	1.73	0.52
1:B:87:LEU:HD22	1:B:91:PHE:HE2	1.76	0.51
1:A:116:SER:O	1:A:120:MET:HG3	2.10	0.51
1:B:192:PHE:HZ	1:B:201:THR:HG22	1.73	0.51
1:B:135:ALA:CB	1:B:216:VAL:HG22	2.40	0.51
1:B:128:VAL:HG13	1:B:260:PHE:CE2	2.45	0.51
1:A:39:VAL:O	1:A:43:LEU:HB2	2.10	0.51
1:B:243:LYS:O	1:B:247:LEU:HD12	2.11	0.51
1:A:106:TRP:HZ3	1:A:190:CYS:H	1.58	0.51

Continued on next page...

Continued from previous page...

Atom-1	Atom-2	Interatomic distance (Å)	Clash overlap (Å)
1:A:194:GLN:HA	1:A:201:THR:HG21	1.93	0.50
1:A:244:PRO:O	1:A:249:SER:HA	2.12	0.50
1:A:140:LEU:HD23	1:A:144:HIS:HD2	1.77	0.50
1:B:153:ARG:HA	1:B:156:HIS:HB2	1.94	0.50
1:A:118:PHE:CE1	1:A:172:LEU:HB3	2.46	0.50
1:B:132:THR:HG21	1:B:212:PRO:HB3	1.94	0.49
1:B:318:GLU:O	1:B:322:ILE:HG13	2.12	0.49
1:B:132:THR:O	1:B:136:ILE:HD12	2.12	0.49
1:A:129:TRP:HA	1:A:132:THR:OG1	2.12	0.49
1:B:118:PHE:CE1	1:B:172:LEU:HB3	2.47	0.49
1:B:180:SER:O	1:B:193:ILE:HD12	2.13	0.48
1:A:197:SER:O	1:A:201:THR:HG23	2.13	0.48
1:A:2075:ALA:HA	1:A:2078:LEU:HD12	1.95	0.48
1:A:180:SER:O	1:A:193:ILE:HD12	2.14	0.48
1:A:167:LEU:O	1:A:167:LEU:HD23	2.14	0.47
1:A:87:LEU:HD22	1:A:91:PHE:CE2	2.49	0.47
1:A:106:TRP:NE1	1:A:108:PHE:HB2	2.23	0.47
1:A:167:LEU:HD23	1:A:167:LEU:C	2.34	0.47
1:B:141:TYR:HD1	1:B:148:TYR:CE1	2.33	0.47
1:A:135:ALA:HB3	1:A:216:VAL:HG22	1.97	0.46
1:A:1012:TYR:CD2	1:A:1029:PHE:CD1	3.03	0.46
1:A:1013:ASN:HB3	1:A:1016:ASP:HB2	1.96	0.46
1:A:55:VAL:O	1:A:59:LEU:HB2	2.16	0.46
1:B:51:THR:O	1:B:55:VAL:HG12	2.15	0.46
1:A:106:TRP:CZ3	1:A:190:CYS:CB	2.94	0.46
1:A:322:ILE:O	1:A:326:LEU:HD12	2.17	0.45
1:B:147:ALA:O	1:B:150:ARG:HG2	2.17	0.45
1:A:36:PRO:HB2	1:A:38:TRP:CD1	2.52	0.44
1:A:1032:ILE:HG22	1:A:1033:PRO:HD2	1.99	0.44
1:A:132:THR:HG22	1:A:216:VAL:CG2	2.47	0.44
1:A:312:ASP:HB3	1:A:315:PHE:HB2	1.99	0.44
1:B:55:VAL:O	1:B:59:LEU:HD23	2.18	0.44
1:A:155:TRP:HB2	1:B:41:PRO:HD3	2.00	0.43
1:A:222:ARG:HA	1:A:225:VAL:HG22	2.01	0.43
1:B:59:LEU:CD2	1:B:87:LEU:HD21	2.48	0.43
1:A:51:THR:O	1:A:55:VAL:HG12	2.18	0.43
1:A:178:VAL:HG11	1:A:197:SER:HB3	2.01	0.43
1:B:142:ILE:HG21	1:B:223:ILE:HG23	2.02	0.42
1:A:219:CYS:O	1:A:223:ILE:HG12	2.19	0.42
1:B:89:VAL:CG2	1:B:120:MET:HG2	2.50	0.42
1:B:96:LEU:HD22	1:B:108:PHE:CZ	2.54	0.42

Continued on next page...

Continued from previous page...

Atom-1	Atom-2	Interatomic distance (Å)	Clash overlap (Å)
1:B:312:ASP:HB3	1:B:315:PHE:HB2	2.02	0.42
1:A:97:ILE:HD13	1:A:189:SER:HB3	2.02	0.42
1:B:59:LEU:HD23	1:B:87:LEU:HD21	2.01	0.41
1:A:256:VAL:HG22	1:A:307:VAL:HG11	2.01	0.41
1:A:153:ARG:HA	1:A:156:HIS:HB2	2.03	0.41
1:B:197:SER:O	1:B:201:THR:HG23	2.20	0.41
1:B:97:ILE:HD11	1:B:120:MET:HE3	2.03	0.41
1:B:142:ILE:HB	1:B:223:ILE:HD12	2.03	0.41
1:A:1029:PHE:O	1:A:1032:ILE:HG13	2.21	0.40
1:B:178:VAL:HG11	1:B:197:SER:HB3	2.03	0.40
1:B:59:LEU:HD22	1:B:87:LEU:HD11	2.03	0.40
1:A:66:LEU:HA	1:A:72:ARG:NH1	2.36	0.40

There are no symmetry-related clashes.

5.3 Torsion angles [i](#)

5.3.1 Protein backbone [i](#)

In the following table, the Percentiles column shows the percent Ramachandran outliers of the chain as a percentile score with respect to all X-ray entries followed by that with respect to entries of similar resolution.

The Analysed column shows the number of residues for which the backbone conformation was analysed, and the total number of residues.

Mol	Chain	Analysed	Favoured	Allowed	Outliers	Percentiles	
1	A	446/460 (97%)	425 (95%)	20 (4%)	1 (0%)	47	78
1	B	390/460 (85%)	371 (95%)	18 (5%)	1 (0%)	41	72
All	All	836/920 (91%)	796 (95%)	38 (4%)	2 (0%)	47	78

All (2) Ramachandran outliers are listed below:

Mol	Chain	Res	Type
1	A	92	TYR
1	B	92	TYR

5.3.2 Protein sidechains

In the following table, the Percentiles column shows the percent sidechain outliers of the chain as a percentile score with respect to all X-ray entries followed by that with respect to entries of similar resolution.

The Analysed column shows the number of residues for which the sidechain conformation was analysed, and the total number of residues.

Mol	Chain	Analysed	Rotameric	Outliers	Percentiles	
1	A	324/391 (83%)	311 (96%)	13 (4%)	31	65
1	B	261/391 (67%)	249 (95%)	12 (5%)	27	60
All	All	585/782 (75%)	560 (96%)	25 (4%)	29	62

All (25) residues with a non-rotameric sidechain are listed below:

Mol	Chain	Res	Type
1	A	2022	ASN
1	A	2074	ASP
1	A	35	ARG
1	A	43	LEU
1	A	113	CYS
1	A	125	ILE
1	A	128	VAL
1	A	167	LEU
1	A	221	LEU
1	A	1020	ASP
1	A	1023	VAL
1	A	1032	ILE
1	A	250	PHE
1	B	2007	TRP
1	B	2074	ASP
1	B	43	LEU
1	B	69	ARG
1	B	70	LYS
1	B	72	ARG
1	B	113	CYS
1	B	125	ILE
1	B	128	VAL
1	B	150	ARG
1	B	221	LEU
1	B	257	PHE

Sometimes sidechains can be flipped to improve hydrogen bonding and reduce clashes. All (4) such

sidechains are listed below:

Mol	Chain	Res	Type
1	A	144	HIS
1	A	156	HIS
1	B	149	HIS
1	B	156	HIS

5.3.3 RNA [i](#)

There are no RNA molecules in this entry.

5.4 Non-standard residues in protein, DNA, RNA chains [i](#)

There are no non-standard protein/DNA/RNA residues in this entry.

5.5 Carbohydrates [i](#)

There are no monosaccharides in this entry.

5.6 Ligand geometry [i](#)

Of 4 ligands modelled in this entry, 1 is monoatomic - leaving 3 for Mogul analysis.

In the following table, the Counts columns list the number of bonds (or angles) for which Mogul statistics could be retrieved, the number of bonds (or angles) that are observed in the model and the number of bonds (or angles) that are defined in the Chemical Component Dictionary. The Link column lists molecule types, if any, to which the group is linked. The Z score for a bond length (or angle) is the number of standard deviations the observed value is removed from the expected value. A bond length (or angle) with $|Z| > 2$ is considered an outlier worth inspection. RMSZ is the root-mean-square of all Z scores of the bond lengths (or angles).

Mol	Type	Chain	Res	Link	Bond lengths			Bond angles		
					Counts	RMSZ	# Z > 2	Counts	RMSZ	# Z > 2
2	JEY	B	2201	-	23,25,25	0.86	1 (4%)	29,34,34	1.28	5 (17%)
2	JEY	A	2201	-	23,25,25	0.86	0	29,34,34	1.21	4 (13%)
4	OLC	B	2202	-	10,10,24	0.78	1 (10%)	11,11,25	1.15	1 (9%)

In the following table, the Chirals column lists the number of chiral outliers, the number of chiral centers analysed, the number of these observed in the model and the number defined in the Chemical Component Dictionary. Similar counts are reported in the Torsion and Rings columns. '2' means no outliers of that kind were identified.

Mol	Type	Chain	Res	Link	Chirals	Torsions	Rings
2	JEY	B	2201	-	-	1/12/12/12	0/3/3/3
2	JEY	A	2201	-	-	0/12/12/12	0/3/3/3
4	OLC	B	2202	-	-	6/10/10/24	-

All (2) bond length outliers are listed below:

Mol	Chain	Res	Type	Atoms	Z	Observed(Å)	Ideal(Å)
2	B	2201	JEY	C11-C10	2.28	1.41	1.37
4	B	2202	OLC	O20-C1	2.02	1.39	1.33

All (10) bond angle outliers are listed below:

Mol	Chain	Res	Type	Atoms	Z	Observed(°)	Ideal(°)
2	B	2201	JEY	C3-C4-C5	-3.03	106.58	113.07
4	B	2202	OLC	O20-C1-C2	2.72	120.43	111.91
2	A	2201	JEY	C3-N1-C2	-2.48	118.75	122.56
2	A	2201	JEY	C3-C4-C5	-2.47	107.78	113.07
2	B	2201	JEY	C6-N2-C7	2.46	108.95	103.90
2	B	2201	JEY	C18-C19-C6	2.45	124.49	120.61
2	A	2201	JEY	C6-N2-C7	2.24	108.50	103.90
2	B	2201	JEY	C14-C19-C6	-2.20	117.12	120.61
2	B	2201	JEY	C5-C6-N2	-2.15	107.25	110.32
2	A	2201	JEY	C14-C19-C6	-2.02	117.40	120.61

There are no chirality outliers.

All (7) torsion outliers are listed below:

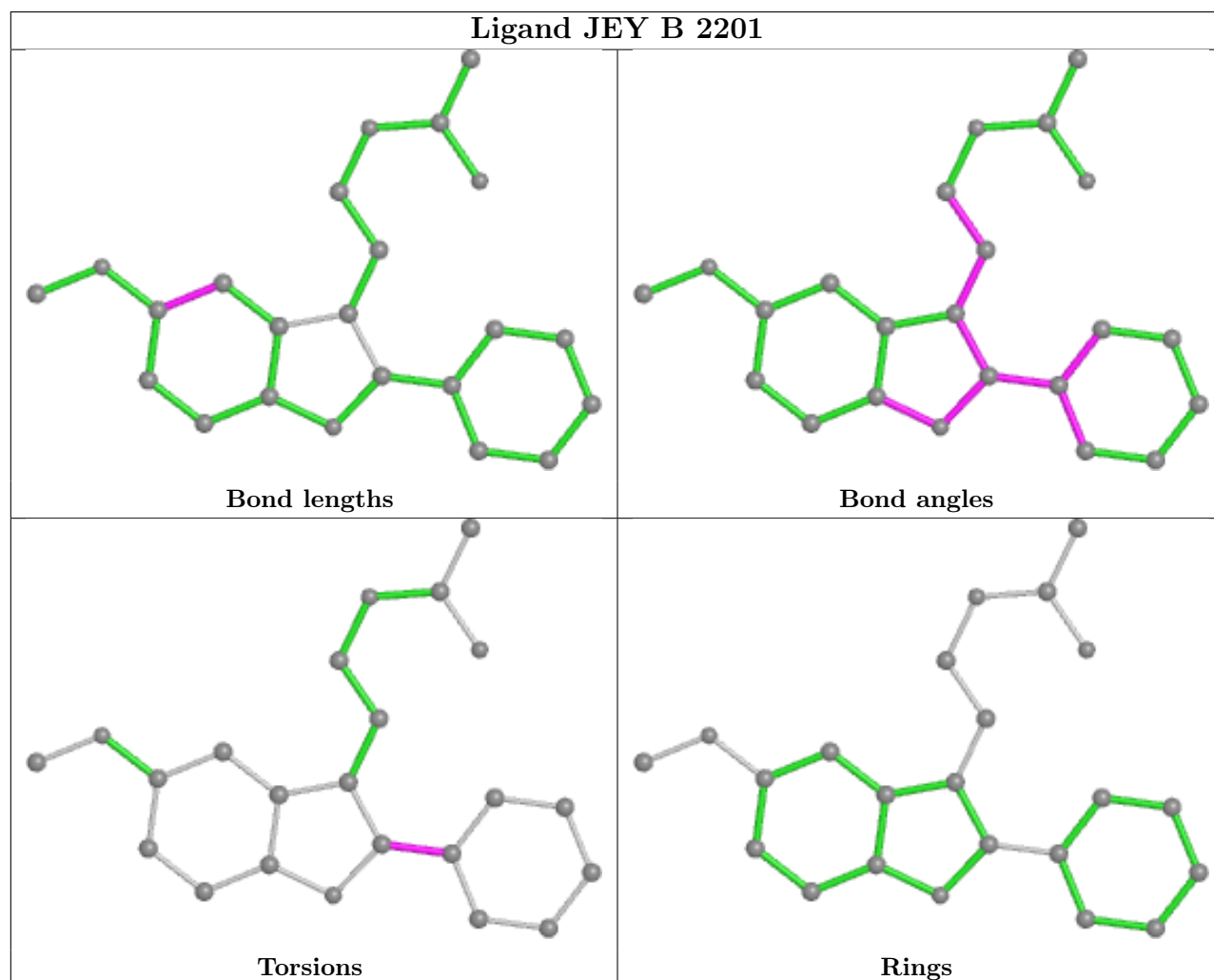
Mol	Chain	Res	Type	Atoms
4	B	2202	OLC	O20-C21-C22-C24
4	B	2202	OLC	C2-C1-O20-C21
4	B	2202	OLC	O20-C21-C22-O23
4	B	2202	OLC	O19-C1-O20-C21
4	B	2202	OLC	C1-C2-C3-C4
2	B	2201	JEY	C18-C19-C6-C5
4	B	2202	OLC	O20-C1-C2-C3

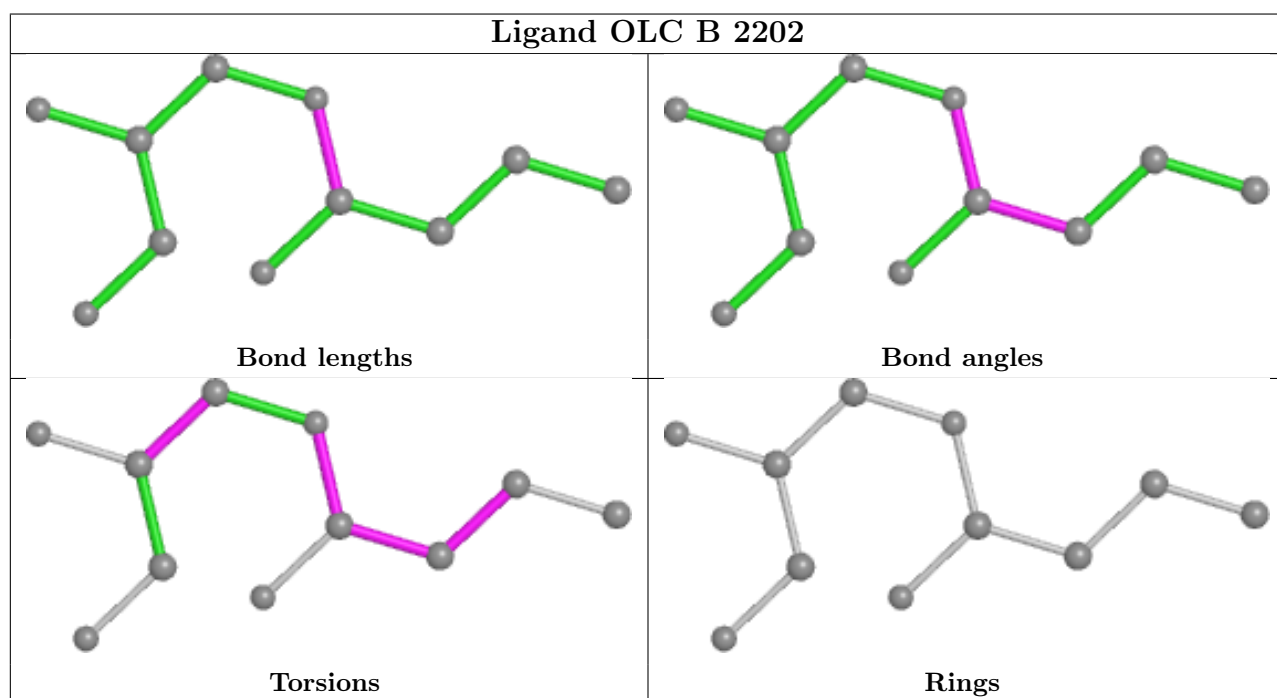
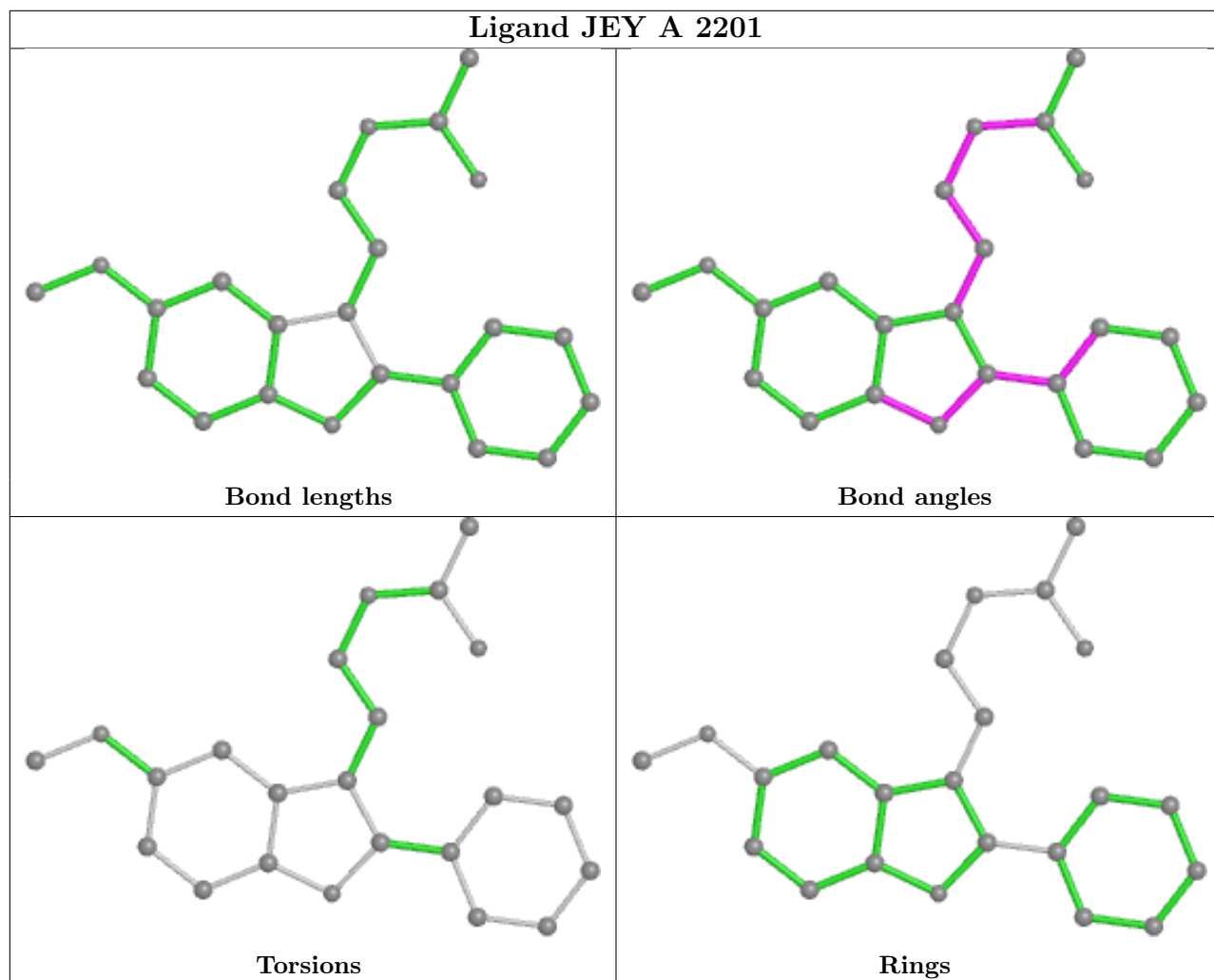
There are no ring outliers.

No monomer is involved in short contacts.

The following is a two-dimensional graphical depiction of Mogul quality analysis of bond lengths, bond angles, torsion angles, and ring geometry for all instances of the Ligand of Interest. In addition, ligands with molecular weight > 250 and outliers as shown on the validation Tables will

also be included. For torsion angles, if less than 5% of the Mogul distribution of torsion angles is within 10 degrees of the torsion angle in question, then that torsion angle is considered an outlier. Any bond that is central to one or more torsion angles identified as an outlier by Mogul will be highlighted in the graph. For rings, the root-mean-square deviation (RMSD) between the ring in question and similar rings identified by Mogul is calculated over all ring torsion angles. If the average RMSD is greater than 60 degrees and the minimal RMSD between the ring in question and any Mogul-identified rings is also greater than 60 degrees, then that ring is considered an outlier. The outliers are highlighted in purple. The color gray indicates Mogul did not find sufficient equivalents in the CSD to analyse the geometry.





5.7 Other polymers [i](#)

There are no such residues in this entry.

5.8 Polymer linkage issues [i](#)

There are no chain breaks in this entry.

6 Fit of model and data

6.1 Protein, DNA and RNA chains

In the following table, the column labelled ‘#RSRZ > 2’ contains the number (and percentage) of RSRZ outliers, followed by percent RSRZ outliers for the chain as percentile scores relative to all X-ray entries and entries of similar resolution. The OWAB column contains the minimum, median, 95th percentile and maximum values of the occupancy-weighted average B-factor per residue. The column labelled ‘Q < 0.9’ lists the number of (and percentage) of residues with an average occupancy less than 0.9.

Mol	Chain	Analysed	<RSRZ>	#RSRZ>2	OWAB(Å ²)	Q<0.9
1	A	448/460 (97%)	0.01	11 (2%) 57 47	86, 118, 189, 223	0
1	B	394/460 (85%)	0.19	27 (6%) 16 10	84, 130, 209, 217	0
All	All	842/920 (91%)	0.09	38 (4%) 33 23	84, 122, 205, 223	0

All (38) RSRZ outliers are listed below:

Mol	Chain	Res	Type	RSRZ
1	B	2093	GLN	5.4
1	B	2100	ALA	5.2
1	B	33	GLY	4.4
1	A	32	ASP	4.4
1	B	2099	ASN	3.9
1	A	31	GLY	3.8
1	B	2056	PRO	3.7
1	B	2058	MET	3.6
1	A	34	ALA	3.5
1	A	276	ILE	3.5
1	A	278	PRO	3.5
1	B	2055	SER	3.5
1	B	2079	ALA	3.5
1	A	2050	ASP	3.4
1	A	2048	LEU	3.3
1	B	2038	LEU	3.3
1	B	2089	ALA	3.2
1	B	34	ALA	3.1
1	B	2001	ALA	3.1
1	B	2082	GLY	2.8
1	B	32	ASP	2.8
1	B	221	LEU	2.7
1	B	281	MET	2.6
1	B	191	THR	2.6

Continued on next page...

Continued from previous page...

Mol	Chain	Res	Type	RSRZ
1	B	2048	LEU	2.5
1	B	194	GLN	2.5
1	B	2080	ASN	2.4
1	B	280	GLU	2.4
1	A	2001	ALA	2.4
1	B	2029	ALA	2.3
1	B	190	CYS	2.3
1	A	253	MET	2.2
1	B	279	GLN	2.2
1	B	2016	VAL	2.2
1	B	2019	LYS	2.1
1	B	2021	ASP	2.1
1	A	2049	GLU	2.1
1	A	154	ARG	2.0

6.2 Non-standard residues in protein, DNA, RNA chains [i](#)

There are no non-standard protein/DNA/RNA residues in this entry.

6.3 Carbohydrates [i](#)

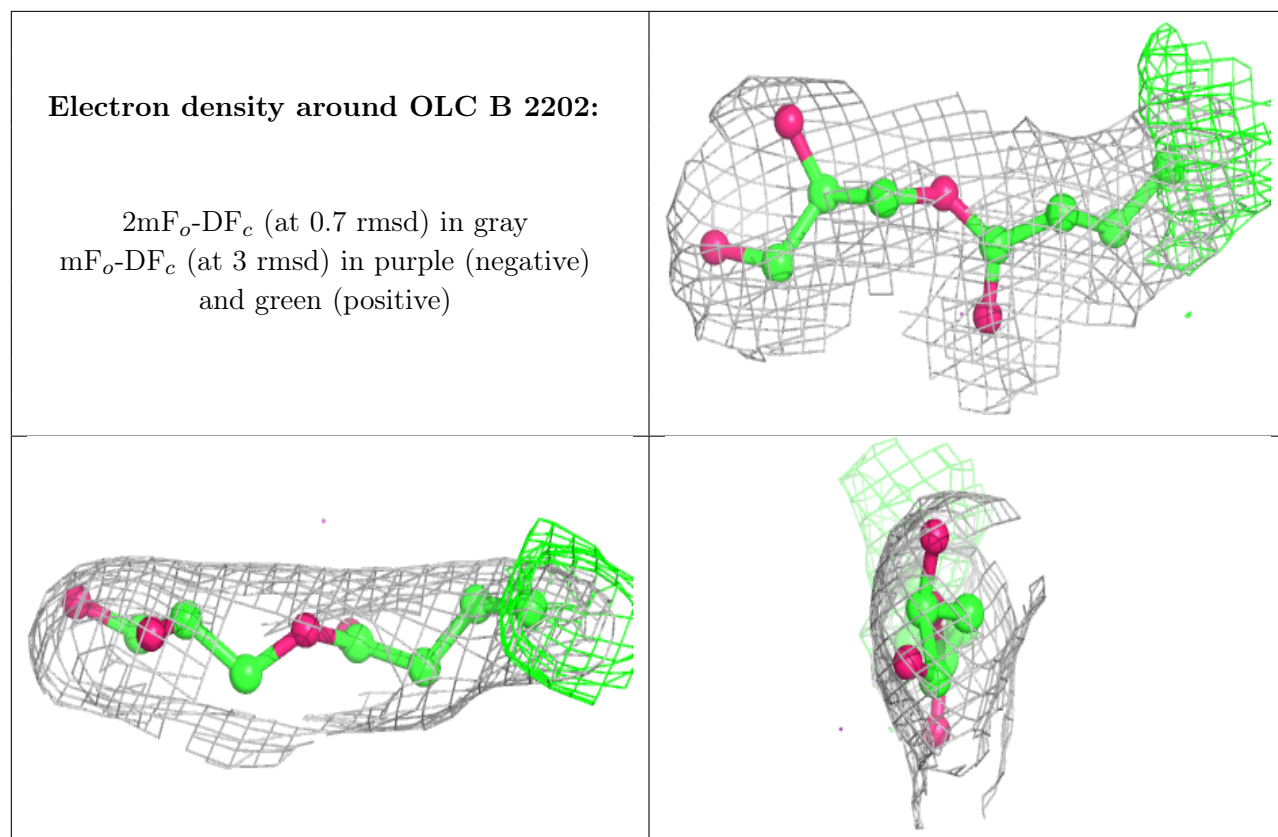
There are no monosaccharides in this entry.

6.4 Ligands [i](#)

In the following table, the Atoms column lists the number of modelled atoms in the group and the number defined in the chemical component dictionary. The B-factors column lists the minimum, median, 95th percentile and maximum values of B factors of atoms in the group. The column labelled 'Q<0.9' lists the number of atoms with occupancy less than 0.9.

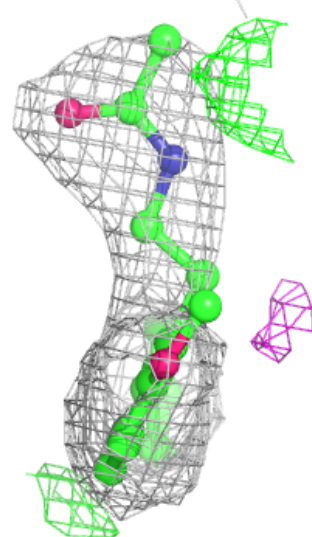
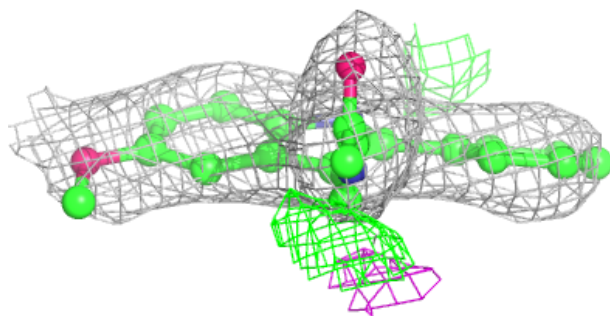
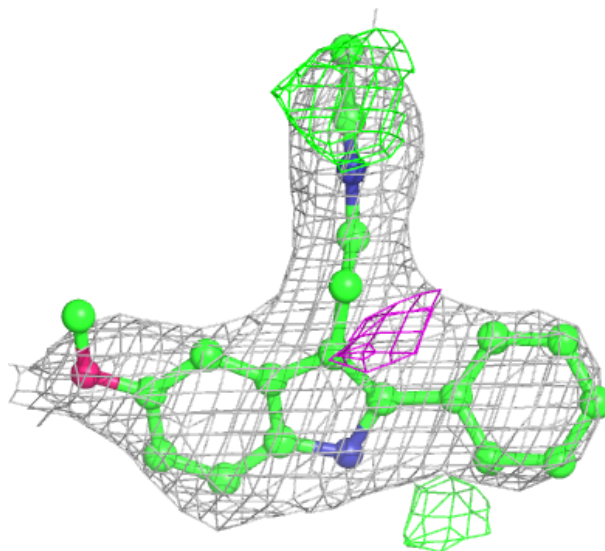
Mol	Type	Chain	Res	Atoms	RSCC	RSR	B-factors(Å ²)	Q<0.9
4	OLC	B	2202	11/25	0.74	0.21	134,138,141,142	0
2	JEY	B	2201	23/23	0.91	0.36	101,106,109,109	0
2	JEY	A	2201	23/23	0.91	0.33	96,100,109,111	0
3	ZN	A	2202	1/1	0.98	0.10	114,114,114,114	0

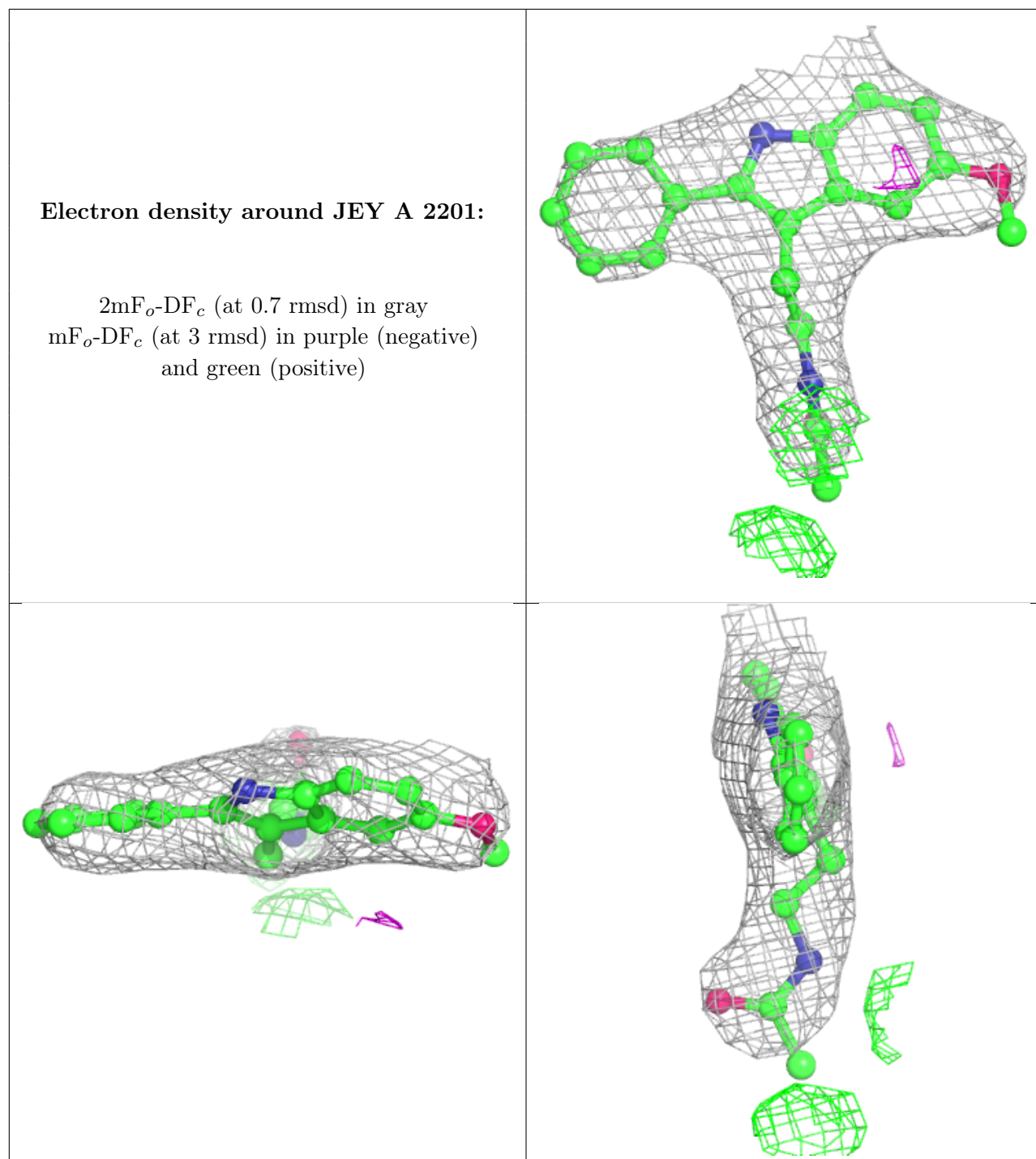
The following is a graphical depiction of the model fit to experimental electron density of all instances of the Ligand of Interest. In addition, ligands with molecular weight > 250 and outliers as shown on the geometry validation Tables will also be included. Each fit is shown from different orientation to approximate a three-dimensional view.



Electron density around JEY B 2201:

$2mF_o-DF_c$ (at 0.7 rmsd) in gray
 mF_o-DF_c (at 3 rmsd) in purple (negative)
and green (positive)





6.5 Other polymers [i](#)

There are no such residues in this entry.