



Full wwPDB X-ray Structure Validation Report ⓘ

Feb 6, 2025 – 12:04 PM EST

PDB ID : 9MI6
Title : Crystal structure of human FcRn in complex with nipocalimab Fab fragment
Authors : Xu, R.; Meador, J.
Deposited on : 2024-12-12
Resolution : 2.41 Å(reported)

This is a Full wwPDB X-ray Structure Validation Report for a publicly released PDB entry.

We welcome your comments at validation@mail.wwpdb.org

A user guide is available at

<https://www.wwpdb.org/validation/2017/XrayValidationReportHelp>

with specific help available everywhere you see the ⓘ symbol.

The types of validation reports are described at

<http://www.wwpdb.org/validation/2017/FAQs#types>.

The following versions of software and data (see [references ⓘ](#)) were used in the production of this report:

MolProbity : 4.02b-467
Mogul : 2022.3.0, CSD as543be (2022)
Xtriage (Phenix) : 1.21
EDS : 3.0
Percentile statistics : 20231227.v01 (using entries in the PDB archive December 27th 2023)
CCP4 : 9.0.004 (Gargrove)
Density-Fitness : 1.0.11
Ideal geometry (proteins) : Engh & Huber (2001)
Ideal geometry (DNA, RNA) : Parkinson et al. (1996)
Validation Pipeline (wwPDB-VP) : 2.40

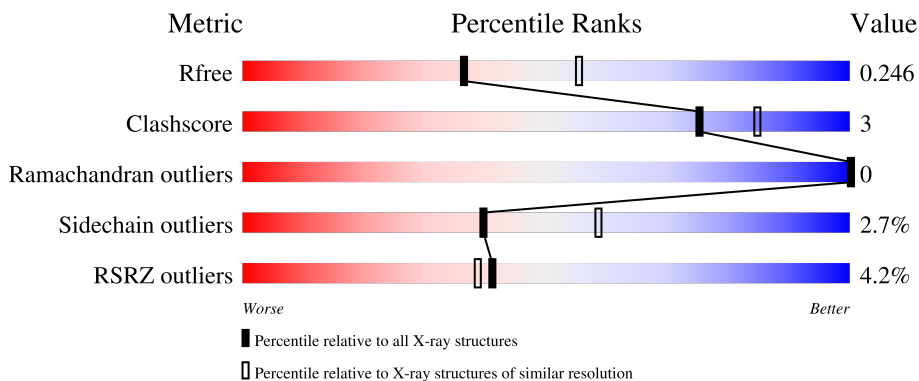
1 Overall quality at a glance

The following experimental techniques were used to determine the structure:

X-RAY DIFFRACTION

The reported resolution of this entry is 2.41 Å.

Percentile scores (ranging between 0-100) for global validation metrics of the entry are shown in the following graphic. The table shows the number of entries on which the scores are based.



Metric	Whole archive (#Entries)	Similar resolution (#Entries, resolution range(Å))
R_{free}	164625	5670 (2.44-2.40)
Clashscore	180529	6299 (2.44-2.40)
Ramachandran outliers	177936	6232 (2.44-2.40)
Sidechain outliers	177891	6233 (2.44-2.40)
RSRZ outliers	164620	5670 (2.44-2.40)

The table below summarises the geometric issues observed across the polymeric chains and their fit to the electron density. The red, orange, yellow and green segments of the lower bar indicate the fraction of residues that contain outliers for ≥ 3 , 2, 1 and 0 types of geometric quality criteria respectively. A grey segment represents the fraction of residues that are not modelled. The numeric value for each fraction is indicated below the corresponding segment, with a dot representing fractions $\leq 5\%$. The upper red bar (where present) indicates the fraction of residues that have poor fit to the electron density. The numeric value is given above the bar.

Mol	Chain	Length	Quality of chain
1	A	280	 6% 87% 7% • 5%
2	B	99	 3% 82% 18%
3	H	220	 5% 91% 7% •
4	L	216	 2% 88% 9% •

2 Entry composition

There are 6 unique types of molecules in this entry. The entry contains 6337 atoms, of which 0 are hydrogens and 0 are deuteriums.

In the tables below, the ZeroOcc column contains the number of atoms modelled with zero occupancy, the AltConf column contains the number of residues with at least one atom in alternate conformation and the Trace column contains the number of residues modelled with at most 2 atoms.

- Molecule 1 is a protein called IgG receptor FcRn large subunit p51.

Mol	Chain	Residues	Atoms					ZeroOcc	AltConf	Trace
			Total	C	N	O	S			
1	A	266	2085	1330	361	386	8	0	0	0

There are 6 discrepancies between the modelled and reference sequences:

Chain	Residue	Modelled	Actual	Comment	Reference
A	275	HIS	-	expression tag	UNP P55899
A	276	HIS	-	expression tag	UNP P55899
A	277	HIS	-	expression tag	UNP P55899
A	278	HIS	-	expression tag	UNP P55899
A	279	HIS	-	expression tag	UNP P55899
A	280	HIS	-	expression tag	UNP P55899

- Molecule 2 is a protein called Beta-2-microglobulin.

Mol	Chain	Residues	Atoms					ZeroOcc	AltConf	Trace
			Total	C	N	O	S			
2	B	99	829	528	140	158	3	0	0	0

- Molecule 3 is a protein called nipocalimab Fab heavy chain.

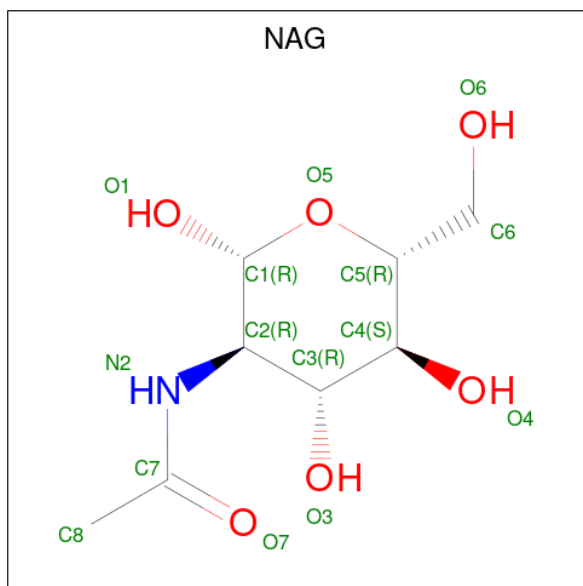
Mol	Chain	Residues	Atoms					ZeroOcc	AltConf	Trace
			Total	C	N	O	S			
3	H	216	1594	1000	270	316	8	0	0	0

- Molecule 4 is a protein called nipocalimab Fab light chain.

Mol	Chain	Residues	Atoms					ZeroOcc	AltConf	Trace
			Total	C	N	O	S			
4	L	211	1550	968	255	322	5	0	0	0

- Molecule 5 is 2-acetamido-2-deoxy-beta-D-glucopyranose (three-letter code: NAG) (formula:

C₈H₁₅NO₆).



Mol	Chain	Residues	Atoms				ZeroOcc	AltConf
			Total	C	N	O		
5	A	1	14	8	1	5	0	0

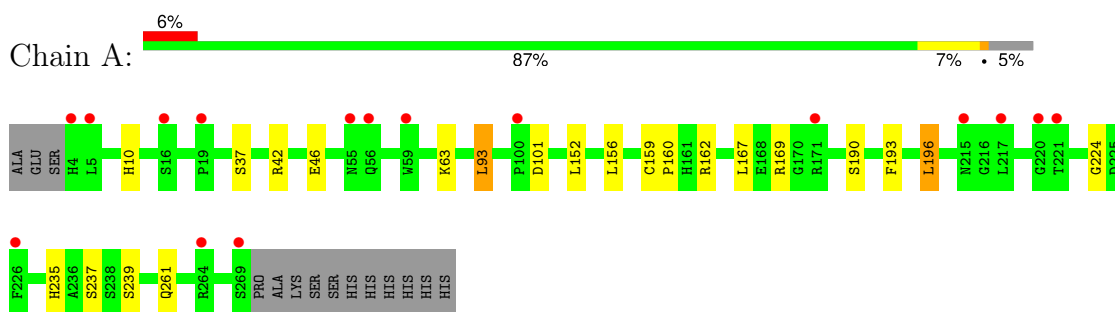
- Molecule 6 is water.

Mol	Chain	Residues	Atoms		ZeroOcc	AltConf
6	A	92	Total	O	0	0
			92	92		
6	B	27	Total	O	0	0
			27	27		
6	H	63	Total	O	0	0
			63	63		
6	L	83	Total	O	0	0
			83	83		

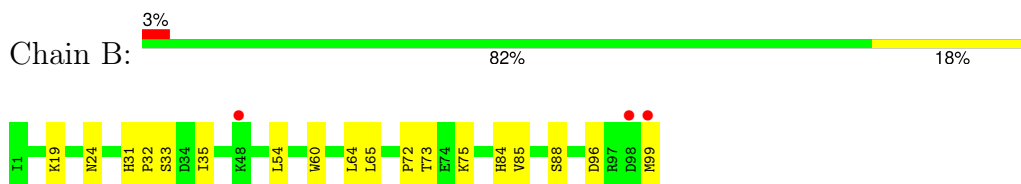
3 Residue-property plots [i](#)

These plots are drawn for all protein, RNA, DNA and oligosaccharide chains in the entry. The first graphic for a chain summarises the proportions of the various outlier classes displayed in the second graphic. The second graphic shows the sequence view annotated by issues in geometry and electron density. Residues are color-coded according to the number of geometric quality criteria for which they contain at least one outlier: green = 0, yellow = 1, orange = 2 and red = 3 or more. A red dot above a residue indicates a poor fit to the electron density ($RSRZ > 2$). Stretches of 2 or more consecutive residues without any outlier are shown as a green connector. Residues present in the sample, but not in the model, are shown in grey.

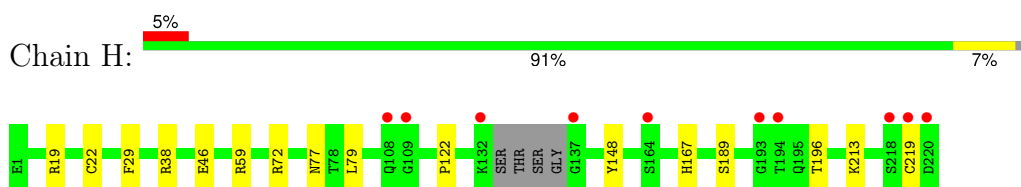
- Molecule 1: IgG receptor FcRn large subunit p51



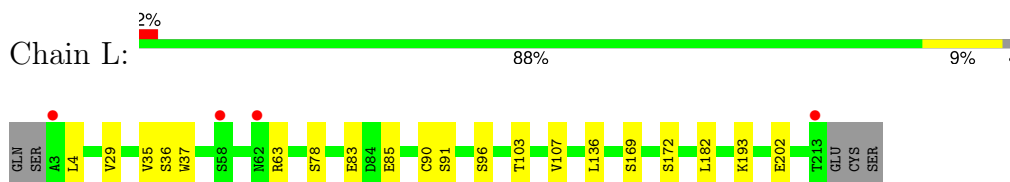
- Molecule 2: Beta-2-microglobulin



- Molecule 3: nipocalimab Fab heavy chain



- Molecule 4: nipocalimab Fab light chain



4 Data and refinement statistics

Property	Value	Source
Space group	C 1 2 1	Depositor
Cell constants a, b, c, α , β , γ	183.28Å 67.64Å 105.30Å 90.00° 104.88° 90.00°	Depositor
Resolution (Å)	44.48 – 2.41 44.48 – 2.41	Depositor EDS
% Data completeness (in resolution range)	95.9 (44.48-2.41) 96.1 (44.48-2.41)	Depositor EDS
R_{merge}	0.14	Depositor
R_{sym}	(Not available)	Depositor
$\langle I/\sigma(I) \rangle$ ¹	1.54 (at 2.42Å)	Xtrriage
Refinement program	PHENIX 1.17.1_3660	Depositor
R, R_{free}	0.206 , 0.248 0.207 , 0.246	Depositor DCC
R_{free} test set	2308 reflections (4.95%)	wwPDB-VP
Wilson B-factor (Å ²)	37.8	Xtrriage
Anisotropy	0.680	Xtrriage
Bulk solvent k_{sol} (e/Å ³), B_{sol} (Å ²)	0.31 , 28.0	EDS
L-test for twinning ²	$\langle L \rangle = 0.50$, $\langle L^2 \rangle = 0.34$	Xtrriage
Estimated twinning fraction	No twinning to report.	Xtrriage
F_o, F_c correlation	0.93	EDS
Total number of atoms	6337	wwPDB-VP
Average B, all atoms (Å ²)	42.0	wwPDB-VP

Xtrriage's analysis on translational NCS is as follows: *The largest off-origin peak in the Patterson function is 4.13% of the height of the origin peak. No significant pseudotranslation is detected.*

¹Intensities estimated from amplitudes.

²Theoretical values of $\langle |L| \rangle$, $\langle L^2 \rangle$ for acentric reflections are 0.5, 0.333 respectively for untwinned datasets, and 0.375, 0.2 for perfectly twinned datasets.

5 Model quality [i](#)

5.1 Standard geometry [i](#)

Bond lengths and bond angles in the following residue types are not validated in this section: NAG

The Z score for a bond length (or angle) is the number of standard deviations the observed value is removed from the expected value. A bond length (or angle) with $|Z| > 5$ is considered an outlier worth inspection. RMSZ is the root-mean-square of all Z scores of the bond lengths (or angles).

Mol	Chain	Bond lengths		Bond angles	
		RMSZ	# Z >5	RMSZ	# Z >5
1	A	0.36	0/2149	0.51	0/2919
2	B	0.32	0/852	0.50	0/1152
3	H	0.32	0/1628	0.50	0/2213
4	L	0.32	0/1587	0.50	0/2165
All	All	0.33	0/6216	0.51	0/8449

There are no bond length outliers.

There are no bond angle outliers.

There are no chirality outliers.

There are no planarity outliers.

5.2 Too-close contacts [i](#)

In the following table, the Non-H and H(model) columns list the number of non-hydrogen atoms and hydrogen atoms in the chain respectively. The H(added) column lists the number of hydrogen atoms added and optimized by MolProbity. The Clashes column lists the number of clashes within the asymmetric unit, whereas Symm-Clashes lists symmetry-related clashes.

Mol	Chain	Non-H	H(model)	H(added)	Clashes	Symm-Clashes
1	A	2085	0	1992	11	0
2	B	829	0	794	10	0
3	H	1594	0	1564	8	0
4	L	1550	0	1496	9	0
5	A	14	0	13	0	0
6	A	92	0	0	0	0
6	B	27	0	0	0	0
6	H	63	0	0	1	0
6	L	83	0	0	0	0
All	All	6337	0	5859	34	0

The all-atom clashscore is defined as the number of clashes found per 1000 atoms (including hydrogen atoms). The all-atom clashscore for this structure is 3.

All (34) close contacts within the same asymmetric unit are listed below, sorted by their clash magnitude.

Atom-1	Atom-2	Interatomic distance (Å)	Clash overlap (Å)
2:B:85:VAL:HG21	4:L:29:VAL:HG11	1.72	0.72
2:B:73:THR:HG22	2:B:75:LYS:H	1.64	0.62
3:H:196:THR:HG23	3:H:213:LYS:HE3	1.81	0.62
2:B:24:ASN:HB3	2:B:65:LEU:HD11	1.82	0.60
1:A:152:LEU:HD21	1:A:156:LEU:HD12	1.87	0.56
3:H:38:ARG:NE	3:H:46:GLU:OE1	2.31	0.55
3:H:29:PHE:O	3:H:72:ARG:NH1	2.41	0.54
1:A:42:ARG:NH1	1:A:46:GLU:OE2	2.34	0.54
3:H:122:PRO:HB3	3:H:148:TYR:HB3	1.91	0.52
1:A:235:HIS:NE2	2:B:99:MET:O	2.40	0.52
3:H:19:ARG:NH1	6:H:301:HOH:O	2.41	0.51
2:B:33:SER:HB2	2:B:54:LEU:HD21	1.93	0.51
4:L:136:LEU:HD12	4:L:182:LEU:HD23	1.95	0.49
3:H:22:CYS:HB3	3:H:79:LEU:HB3	1.95	0.48
1:A:190:SER:HB3	1:A:193:PHE:HB2	1.96	0.48
2:B:54:LEU:HD13	2:B:64:LEU:HD22	1.95	0.48
1:A:159:CYS:HB3	1:A:160:PRO:HD3	1.98	0.46
1:A:63:LYS:HG2	1:A:162:ARG:NH2	2.31	0.46
4:L:36:SER:O	4:L:91:SER:N	2.48	0.45
1:A:196:LEU:O	1:A:239:SER:HA	2.16	0.44
4:L:37:TRP:CH2	4:L:90:CYS:HB3	2.52	0.44
4:L:63:ARG:HB3	4:L:78:SER:O	2.17	0.44
2:B:31:HIS:ND1	2:B:32:PRO:HA	2.33	0.44
4:L:136:LEU:HB2	4:L:182:LEU:HB3	1.99	0.43
1:A:93:LEU:HB2	2:B:60:TRP:CH2	2.54	0.43
1:A:167:LEU:HD23	1:A:167:LEU:HA	1.85	0.43
3:H:29:PHE:CD2	3:H:77:ASN:HA	2.53	0.43
2:B:19:LYS:O	2:B:72:PRO:HD2	2.20	0.42
2:B:35:ILE:HD12	2:B:84:HIS:CD2	2.55	0.42
1:A:224:GLY:HA2	1:A:237:SER:O	2.21	0.41
3:H:59:ARG:HH21	4:L:96:SER:HG	1.66	0.41
4:L:35:VAL:HA	4:L:91:SER:O	2.21	0.41
1:A:101:ASP:OD1	1:A:101:ASP:N	2.36	0.40
4:L:85:GLU:HG3	4:L:107:VAL:O	2.22	0.40

There are no symmetry-related clashes.

5.3 Torsion angles [i](#)

5.3.1 Protein backbone [i](#)

In the following table, the Percentiles column shows the percent Ramachandran outliers of the chain as a percentile score with respect to all X-ray entries followed by that with respect to entries of similar resolution.

The Analysed column shows the number of residues for which the backbone conformation was analysed, and the total number of residues.

Mol	Chain	Analysed	Favoured	Allowed	Outliers	Percentiles	
1	A	264/280 (94%)	256 (97%)	8 (3%)	0	100	100
2	B	97/99 (98%)	96 (99%)	1 (1%)	0	100	100
3	H	212/220 (96%)	209 (99%)	3 (1%)	0	100	100
4	L	209/216 (97%)	203 (97%)	6 (3%)	0	100	100
All	All	782/815 (96%)	764 (98%)	18 (2%)	0	100	100

There are no Ramachandran outliers to report.

5.3.2 Protein sidechains [i](#)

In the following table, the Percentiles column shows the percent sidechain outliers of the chain as a percentile score with respect to all X-ray entries followed by that with respect to entries of similar resolution.

The Analysed column shows the number of residues for which the sidechain conformation was analysed, and the total number of residues.

Mol	Chain	Analysed	Rotameric	Outliers	Percentiles	
1	A	219/232 (94%)	213 (97%)	6 (3%)	40	58
2	B	94/94 (100%)	92 (98%)	2 (2%)	48	67
3	H	177/181 (98%)	174 (98%)	3 (2%)	56	73
4	L	174/179 (97%)	167 (96%)	7 (4%)	27	43
All	All	664/686 (97%)	646 (97%)	18 (3%)	40	58

All (18) residues with a non-rotameric sidechain are listed below:

Mol	Chain	Res	Type
1	A	10	HIS
1	A	37	SER

Continued on next page...

Continued from previous page...

Mol	Chain	Res	Type
1	A	93	LEU
1	A	169	ARG
1	A	196	LEU
1	A	261	GLN
2	B	88	SER
2	B	96	ASP
3	H	167	HIS
3	H	189	SER
3	H	219	CYS
4	L	4	LEU
4	L	83	GLU
4	L	103	THR
4	L	169	SER
4	L	172	SER
4	L	193	LYS
4	L	202	GLU

Sometimes sidechains can be flipped to improve hydrogen bonding and reduce clashes. There are no such sidechains identified.

5.3.3 RNA [i](#)

There are no RNA molecules in this entry.

5.4 Non-standard residues in protein, DNA, RNA chains [i](#)

There are no non-standard protein/DNA/RNA residues in this entry.

5.5 Carbohydrates [i](#)

There are no oligosaccharides in this entry.

5.6 Ligand geometry [i](#)

1 ligand is modelled in this entry.

In the following table, the Counts columns list the number of bonds (or angles) for which Mogul statistics could be retrieved, the number of bonds (or angles) that are observed in the model and the number of bonds (or angles) that are defined in the Chemical Component Dictionary. The Link column lists molecule types, if any, to which the group is linked. The Z score for a bond length (or angle) is the number of standard deviations the observed value is removed from the

expected value. A bond length (or angle) with $|Z| > 2$ is considered an outlier worth inspection. RMSZ is the root-mean-square of all Z scores of the bond lengths (or angles).

Mol	Type	Chain	Res	Link	Bond lengths			Bond angles		
					Counts	RMSZ	$\# Z > 2$	Counts	RMSZ	$\# Z > 2$
5	NAG	A	301	1	14,14,15	0.67	0	17,19,21	0.72	1 (5%)

In the following table, the Chirals column lists the number of chiral outliers, the number of chiral centers analysed, the number of these observed in the model and the number defined in the Chemical Component Dictionary. Similar counts are reported in the Torsion and Rings columns. '-' means no outliers of that kind were identified.

Mol	Type	Chain	Res	Link	Chirals	Torsions	Rings
5	NAG	A	301	1	-	0/6/23/26	0/1/1/1

There are no bond length outliers.

All (1) bond angle outliers are listed below:

Mol	Chain	Res	Type	Atoms	Z	Observed(°)	Ideal(°)
5	A	301	NAG	C1-O5-C5	2.55	115.61	112.19

There are no chirality outliers.

There are no torsion outliers.

There are no ring outliers.

No monomer is involved in short contacts.

5.7 Other polymers [i](#)

There are no such residues in this entry.

5.8 Polymer linkage issues [i](#)

There are no chain breaks in this entry.

6 Fit of model and data

6.1 Protein, DNA and RNA chains

In the following table, the column labelled ‘#RSRZ > 2’ contains the number (and percentage) of RSRZ outliers, followed by percent RSRZ outliers for the chain as percentile scores relative to all X-ray entries and entries of similar resolution. The OWAB column contains the minimum, median, 95th percentile and maximum values of the occupancy-weighted average B-factor per residue. The column labelled ‘Q < 0.9’ lists the number of (and percentage) of residues with an average occupancy less than 0.9.

Mol	Chain	Analysed	<RSRZ>	#RSRZ>2	OWAB(Å ²)	Q<0.9
1	A	266/280 (95%)	0.34	16 (6%) 29 27	29, 39, 60, 74	0
2	B	99/99 (100%)	0.19	3 (3%) 52 50	29, 35, 66, 75	0
3	H	216/220 (98%)	0.37	10 (4%) 38 35	32, 42, 65, 87	0
4	L	211/216 (97%)	0.19	4 (1%) 66 63	31, 40, 55, 73	0
All	All	792/815 (97%)	0.29	33 (4%) 41 39	29, 40, 61, 87	0

All (33) RSRZ outliers are listed below:

Mol	Chain	Res	Type	RSRZ
4	L	213	THR	4.3
1	A	269	SER	4.0
2	B	99	MET	3.7
3	H	132	LYS	3.4
4	L	3	ALA	3.3
2	B	98	ASP	3.1
1	A	100	PRO	3.1
1	A	59	TRP	3.0
1	A	4	HIS	3.0
4	L	62	ASN	2.9
2	B	48	LYS	2.8
3	H	219	CYS	2.7
1	A	226	PHE	2.6
1	A	55	ASN	2.5
3	H	220	ASP	2.5
3	H	218	SER	2.4
1	A	220	GLY	2.4
3	H	137	GLY	2.4
1	A	215	ASN	2.3
1	A	5	LEU	2.2
1	A	217	LEU	2.2

Continued on next page...

Continued from previous page...

Mol	Chain	Res	Type	RSRZ
1	A	221	THR	2.2
1	A	16	SER	2.2
1	A	19	PRO	2.2
3	H	164	SER	2.1
3	H	109	GLY	2.1
3	H	193	GLY	2.1
1	A	56	GLN	2.1
3	H	108	GLN	2.1
1	A	171	ARG	2.0
3	H	194	THR	2.0
4	L	58	SER	2.0
1	A	264	ARG	2.0

6.2 Non-standard residues in protein, DNA, RNA chains [i](#)

There are no non-standard protein/DNA/RNA residues in this entry.

6.3 Carbohydrates [i](#)

There are no monosaccharides in this entry.

6.4 Ligands [i](#)

In the following table, the Atoms column lists the number of modelled atoms in the group and the number defined in the chemical component dictionary. The B-factors column lists the minimum, median, 95th percentile and maximum values of B factors of atoms in the group. The column labelled 'Q< 0.9' lists the number of atoms with occupancy less than 0.9.

Mol	Type	Chain	Res	Atoms	RSCC	RSR	B-factors(Å ²)	Q<0.9
5	NAG	A	301	14/15	0.55	0.25	54,74,80,82	0

6.5 Other polymers [i](#)

There are no such residues in this entry.