



Full wwPDB X-ray Structure Validation Report ⓘ

Oct 9, 2023 – 10:37 PM EDT

PDB ID : 7MMH
Title : Crystal structure of HCV NS3/4A D168A protease in complex with NR02-49
Authors : Zephyr, J.; Schiffer, C.A.
Deposited on : 2021-04-29
Resolution : 1.75 Å(reported)

This is a Full wwPDB X-ray Structure Validation Report for a publicly released PDB entry.

We welcome your comments at validation@mail.wwpdb.org

A user guide is available at

<https://www.wwpdb.org/validation/2017/XrayValidationReportHelp>

with specific help available everywhere you see the ⓘ symbol.

The types of validation reports are described at

<http://www.wwpdb.org/validation/2017/FAQs#types>.

The following versions of software and data (see [references ⓘ](#)) were used in the production of this report:

MolProbity : 4.02b-467
Mogul : 1.8.5 (274361), CSD as541be (2020)
Xtriage (Phenix) : 1.13
EDS : 2.35.1
buster-report : 1.1.7 (2018)
Percentile statistics : 20191225.v01 (using entries in the PDB archive December 25th 2019)
Refmac : 5.8.0158
CCP4 : 7.0.044 (Gargrove)
Ideal geometry (proteins) : Engh & Huber (2001)
Ideal geometry (DNA, RNA) : Parkinson et al. (1996)
Validation Pipeline (wwPDB-VP) : 2.35.1

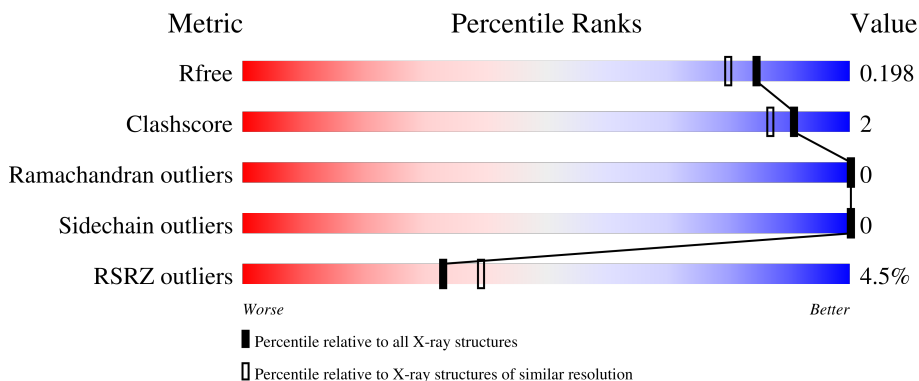
1 Overall quality at a glance i

The following experimental techniques were used to determine the structure:

X-RAY DIFFRACTION

The reported resolution of this entry is 1.75 Å.

Percentile scores (ranging between 0-100) for global validation metrics of the entry are shown in the following graphic. The table shows the number of entries on which the scores are based.



Metric	Whole archive (#Entries)	Similar resolution (#Entries, resolution range(Å))
R_{free}	130704	2340 (1.76-1.76)
Clashscore	141614	2466 (1.76-1.76)
Ramachandran outliers	138981	2437 (1.76-1.76)
Sidechain outliers	138945	2437 (1.76-1.76)
RSRZ outliers	127900	2298 (1.76-1.76)

The table below summarises the geometric issues observed across the polymeric chains and their fit to the electron density. The red, orange, yellow and green segments of the lower bar indicate the fraction of residues that contain outliers for ≥ 3 , 2, 1 and 0 types of geometric quality criteria respectively. A grey segment represents the fraction of residues that are not modelled. The numeric value for each fraction is indicated below the corresponding segment, with a dot representing fractions $\leq 5\%$. The upper red bar (where present) indicates the fraction of residues that have poor fit to the electron density. The numeric value is given above the bar.

Mol	Chain	Length	Quality of chain
1	A	200	 4% 98%

2 Entry composition [i](#)

There are 6 unique types of molecules in this entry. The entry contains 2950 atoms, of which 1254 are hydrogens and 0 are deuteriums.

In the tables below, the ZeroOcc column contains the number of atoms modelled with zero occupancy, the AltConf column contains the number of residues with at least one atom in alternate conformation and the Trace column contains the number of residues modelled with at most 2 atoms.

- Molecule 1 is a protein called NS3/4A protease.

Mol	Chain	Residues	Atoms					ZeroOcc	AltConf	Trace	
			Total	C	H	N	O				S
1	A	199	2594	888	1159	260	280	7	0	4	0

There are 34 discrepancies between the modelled and reference sequences:

Chain	Residue	Modelled	Actual	Comment	Reference
A	982	HIS	-	expression tag	UNP A8DG50
A	983	MET	-	expression tag	UNP A8DG50
A	984	ALA	-	expression tag	UNP A8DG50
A	985	SER	-	expression tag	UNP A8DG50
A	986	MET	-	expression tag	UNP A8DG50
A	987	LYS	-	expression tag	UNP A8DG50
A	988	LYS	-	expression tag	UNP A8DG50
A	989	LYS	-	expression tag	UNP A8DG50
A	990	GLY	-	expression tag	UNP A8DG50
A	991	SER	-	expression tag	UNP A8DG50
A	992	VAL	-	expression tag	UNP A8DG50
A	993	VAL	-	expression tag	UNP A8DG50
A	994	ILE	-	expression tag	UNP A8DG50
A	995	VAL	-	expression tag	UNP A8DG50
A	996	GLY	-	expression tag	UNP A8DG50
A	997	ARG	-	expression tag	UNP A8DG50
A	998	ILE	-	expression tag	UNP A8DG50
A	999	ASN	-	expression tag	UNP A8DG50
A	1000	LEU	-	expression tag	UNP A8DG50
A	1001	SER	-	expression tag	UNP A8DG50
A	1002	GLY	-	expression tag	UNP A8DG50
A	1003	ASP	-	expression tag	UNP A8DG50
A	1013	GLU	LEU	conflict	UNP A8DG50
A	1014	GLU	LEU	conflict	UNP A8DG50
A	1017	GLN	ILE	conflict	UNP A8DG50
A	1018	GLU	ILE	conflict	UNP A8DG50
A	1021	GLN	LEU	conflict	UNP A8DG50

Continued on next page...

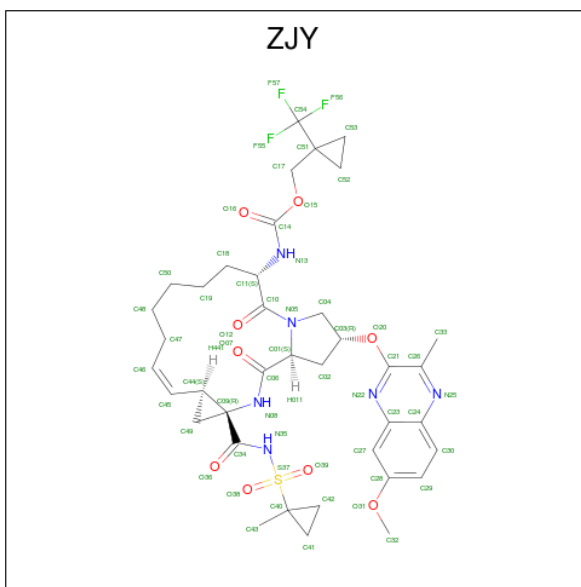
Continued from previous page...

Chain	Residue	Modelled	Actual	Comment	Reference
A	1040	THR	ALA	conflict	UNP A8DG50
A	1047	SER	CYS	conflict	UNP A8DG50
A	1052	LEU	CYS	conflict	UNP A8DG50
A	1072	THR	ILE	conflict	UNP A8DG50
A	1086	GLN	PRO	conflict	UNP A8DG50
A	1159	SER	CYS	conflict	UNP A8DG50
A	1168	ALA	ASP	engineered mutation	UNP A8DG50

- Molecule 2 is ZINC ION (three-letter code: ZN) (formula: Zn).

Mol	Chain	Residues	Atoms	ZeroOcc	AltConf
2	A	1	Total Zn 1 1	0	0

- Molecule 3 is [1-(trifluoromethyl)cyclopropyl]methyl {(2R,4S,6S,12Z,13aS,14aR,16aS)-2-[(7-methoxy-3-methylquinoxalin-2-yl)oxy]-14a-[(1-methylcyclopropane-1-sulfonyl)carbamoyl]-5,16-dioxo-1,2,3,5,6,7,8,9,10,11,13a,14,14a,15,16,16a-hexadecahydrocyclopropa[e]pyrrolo[1,2-a][1,4]diazacyclopentadecin-6-yl} carbamate (three-letter code: ZJY) (formula: C₃₈H₄₇F₃N₆O₉S) (labeled as "Ligand of Interest" by depositor).



Mol	Chain	Residues	Atoms						ZeroOcc	AltConf	
			Total	C	F	H	N	O			S
3	A	1	104	38	3	47	6	9	1	0	0

- Molecule 4 is 1,2-ETHANEDIOL (three-letter code: EDO) (formula: C₂H₆O₂).



Mol	Chain	Residues	Atoms				ZeroOcc	AltConf
4	A	1	Total	C	H	O	0	0
			10	2	6	2		
4	A	1	Total	C	H	O	0	0
			10	2	6	2		
4	A	1	Total	C	H	O	0	0
			10	2	6	2		
4	A	1	Total	C	H	O	0	0
			10	2	6	2		
4	A	1	Total	C	H	O	0	0
			10	2	6	2		
4	A	1	Total	C	H	O	0	0
			10	2	6	2		

- Molecule 5 is SULFATE ION (three-letter code: SO4) (formula: O₄S).



Mol	Chain	Residues	Atoms			ZeroOcc	AltConf
5	A	1	Total	O	S	0	0
			5	4	1		
5	A	1	Total	O	S	0	0
			5	4	1		

- Molecule 6 is water.

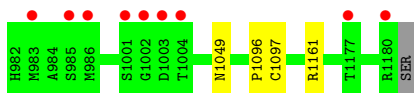
Mol	Chain	Residues	Atoms		ZeroOcc	AltConf
6	A	161	Total	O	0	0
			161	161		

3 Residue-property plots [i](#)

These plots are drawn for all protein, RNA, DNA and oligosaccharide chains in the entry. The first graphic for a chain summarises the proportions of the various outlier classes displayed in the second graphic. The second graphic shows the sequence view annotated by issues in geometry and electron density. Residues are color-coded according to the number of geometric quality criteria for which they contain at least one outlier: green = 0, yellow = 1, orange = 2 and red = 3 or more. A red dot above a residue indicates a poor fit to the electron density ($RSRZ > 2$). Stretches of 2 or more consecutive residues without any outlier are shown as a green connector. Residues present in the sample, but not in the model, are shown in grey.

- Molecule 1: NS3/4A protease

Chain A: 



4 Data and refinement statistics i

Property	Value	Source
Space group	P 21 21 21	Depositor
Cell constants a, b, c, α , β , γ	54.92Å 58.71Å 59.81Å 90.00° 90.00° 90.00°	Depositor
Resolution (Å)	20.95 – 1.75 20.95 – 1.75	Depositor EDS
% Data completeness (in resolution range)	99.9 (20.95-1.75) 99.9 (20.95-1.75)	Depositor EDS
R_{merge}	(Not available)	Depositor
R_{sym}	(Not available)	Depositor
$\langle I/\sigma(I) \rangle$ ¹	1.72 (at 1.75Å)	Xtrriage
Refinement program	PHENIX 1.18.2_3874	Depositor
R, R_{free}	0.157 , 0.199 0.158 , 0.198	Depositor DCC
R_{free} test set	2004 reflections (9.98%)	wwPDB-VP
Wilson B-factor (Å ²)	14.4	Xtrriage
Anisotropy	0.311	Xtrriage
Bulk solvent k_{sol} (e/Å ³), B_{sol} (Å ²)	0.41 , 53.0	EDS
L-test for twinning ²	$\langle L \rangle = 0.50$, $\langle L^2 \rangle = 0.34$	Xtrriage
Estimated twinning fraction	0.015 for -h,l,k	Xtrriage
F_o, F_c correlation	0.96	EDS
Total number of atoms	2950	wwPDB-VP
Average B, all atoms (Å ²)	17.0	wwPDB-VP

Xtrriage's analysis on translational NCS is as follows: *The largest off-origin peak in the Patterson function is 6.39% of the height of the origin peak. No significant pseudotranslation is detected.*

¹Intensities estimated from amplitudes.

²Theoretical values of $\langle |L| \rangle$, $\langle L^2 \rangle$ for acentric reflections are 0.5, 0.333 respectively for untwinned datasets, and 0.375, 0.2 for perfectly twinned datasets.

5 Model quality [i](#)

5.1 Standard geometry [i](#)

Bond lengths and bond angles in the following residue types are not validated in this section: ZJY, ZN, EDO, SO4

The Z score for a bond length (or angle) is the number of standard deviations the observed value is removed from the expected value. A bond length (or angle) with $|Z| > 5$ is considered an outlier worth inspection. RMSZ is the root-mean-square of all Z scores of the bond lengths (or angles).

Mol	Chain	Bond lengths		Bond angles	
		RMSZ	# Z >5	RMSZ	# Z >5
1	A	0.42	0/1459	0.71	0/1991

There are no bond length outliers.

There are no bond angle outliers.

There are no chirality outliers.

There are no planarity outliers.

5.2 Too-close contacts [i](#)

In the following table, the Non-H and H(model) columns list the number of non-hydrogen atoms and hydrogen atoms in the chain respectively. The H(added) column lists the number of hydrogen atoms added and optimized by MolProbity. The Clashes column lists the number of clashes within the asymmetric unit, whereas Symm-Clashes lists symmetry-related clashes.

Mol	Chain	Non-H	H(model)	H(added)	Clashes	Symm-Clashes
1	A	1435	1159	1384	4	0
2	A	1	0	0	0	0
3	A	57	47	0	0	0
4	A	32	48	48	4	0
5	A	10	0	0	0	0
6	A	161	0	0	1	0
All	All	1696	1254	1432	5	0

The all-atom clashscore is defined as the number of clashes found per 1000 atoms (including hydrogen atoms). The all-atom clashscore for this structure is 2.

All (5) close contacts within the same asymmetric unit are listed below, sorted by their clash magnitude.

Atom-1	Atom-2	Interatomic distance (Å)	Clash overlap (Å)
1:A:1161:ARG:H	4:A:1206:EDO:C2	2.19	0.56
4:A:1210:EDO:H12	6:A:1342:HOH:O	2.06	0.54
1:A:1161:ARG:H	4:A:1206:EDO:H22	1.82	0.43
1:A:1097:CYS:SG	4:A:1205:EDO:H11	2.58	0.43
1:A:1049:ASN:OD1	1:A:1096:PRO:HD3	2.21	0.40

There are no symmetry-related clashes.

5.3 Torsion angles [i](#)

5.3.1 Protein backbone [i](#)

In the following table, the Percentiles column shows the percent Ramachandran outliers of the chain as a percentile score with respect to all X-ray entries followed by that with respect to entries of similar resolution.

The Analysed column shows the number of residues for which the backbone conformation was analysed, and the total number of residues.

Mol	Chain	Analysed	Favoured	Allowed	Outliers	Percentiles
1	A	201/200 (100%)	198 (98%)	3 (2%)	0	100 100

There are no Ramachandran outliers to report.

5.3.2 Protein sidechains [i](#)

In the following table, the Percentiles column shows the percent sidechain outliers of the chain as a percentile score with respect to all X-ray entries followed by that with respect to entries of similar resolution.

The Analysed column shows the number of residues for which the sidechain conformation was analysed, and the total number of residues.

Mol	Chain	Analysed	Rotameric	Outliers	Percentiles
1	A	148/162 (91%)	148 (100%)	0	100 100

There are no protein residues with a non-rotameric sidechain to report.

Sometimes sidechains can be flipped to improve hydrogen bonding and reduce clashes. There are no such sidechains identified.

5.3.3 RNA [i](#)

There are no RNA molecules in this entry.

5.4 Non-standard residues in protein, DNA, RNA chains [i](#)

There are no non-standard protein/DNA/RNA residues in this entry.

5.5 Carbohydrates [i](#)

There are no monosaccharides in this entry.

5.6 Ligand geometry [i](#)

Of 12 ligands modelled in this entry, 1 is monoatomic - leaving 11 for Mogul analysis.

In the following table, the Counts columns list the number of bonds (or angles) for which Mogul statistics could be retrieved, the number of bonds (or angles) that are observed in the model and the number of bonds (or angles) that are defined in the Chemical Component Dictionary. The Link column lists molecule types, if any, to which the group is linked. The Z score for a bond length (or angle) is the number of standard deviations the observed value is removed from the expected value. A bond length (or angle) with $|Z| > 2$ is considered an outlier worth inspection. RMSZ is the root-mean-square of all Z scores of the bond lengths (or angles).

Mol	Type	Chain	Res	Link	Bond lengths			Bond angles		
					Counts	RMSZ	$\# Z > 2$	Counts	RMSZ	$\# Z > 2$
4	EDO	A	1204	-	3,3,3	0.47	0	2,2,2	0.47	0
4	EDO	A	1203	-	3,3,3	0.50	0	2,2,2	0.19	0
4	EDO	A	1208	-	3,3,3	0.22	0	2,2,2	0.43	0
4	EDO	A	1205	-	3,3,3	0.53	0	2,2,2	0.16	0
4	EDO	A	1209	-	3,3,3	0.52	0	2,2,2	0.29	0
4	EDO	A	1210	-	3,3,3	0.55	0	2,2,2	0.76	0
5	SO4	A	1212	-	4,4,4	0.20	0	6,6,6	0.23	0
4	EDO	A	1206	-	3,3,3	0.43	0	2,2,2	0.37	0
4	EDO	A	1207	-	3,3,3	0.37	0	2,2,2	0.04	0
3	ZJY	A	1202	-	58,63,63	3.92	26 (44%)	80,98,98	2.62	31 (38%)
5	SO4	A	1211	-	4,4,4	0.17	0	6,6,6	0.36	0

In the following table, the Chirals column lists the number of chiral outliers, the number of chiral centers analysed, the number of these observed in the model and the number defined in the Chemical Component Dictionary. Similar counts are reported in the Torsion and Rings columns. '2' means no outliers of that kind were identified.

Mol	Type	Chain	Res	Link	Chirals	Torsions	Rings
4	EDO	A	1204	-	-	0/1/1/1	-
4	EDO	A	1203	-	-	1/1/1/1	-
4	EDO	A	1208	-	-	1/1/1/1	-
4	EDO	A	1205	-	-	0/1/1/1	-
4	EDO	A	1209	-	-	1/1/1/1	-
4	EDO	A	1210	-	-	0/1/1/1	-
4	EDO	A	1206	-	-	0/1/1/1	-
4	EDO	A	1207	-	-	0/1/1/1	-
3	ZJY	A	1202	-	-	7/63/100/100	0/6/7/7

All (26) bond length outliers are listed below:

Mol	Chain	Res	Type	Atoms	Z	Observed(Å)	Ideal(Å)
3	A	1202	ZJY	C27-C28	9.56	1.54	1.37
3	A	1202	ZJY	C26-N25	8.96	1.43	1.32
3	A	1202	ZJY	C02-C03	-8.69	1.33	1.52
3	A	1202	ZJY	C04-N05	8.38	1.60	1.47
3	A	1202	ZJY	C30-C24	7.87	1.55	1.41
3	A	1202	ZJY	C27-C23	7.77	1.53	1.41
3	A	1202	ZJY	C29-C28	7.39	1.53	1.38
3	A	1202	ZJY	C30-C29	7.10	1.51	1.36
3	A	1202	ZJY	C21-N22	5.55	1.44	1.30
3	A	1202	ZJY	C23-C24	5.31	1.53	1.42
3	A	1202	ZJY	C02-C01	5.21	1.63	1.53
3	A	1202	ZJY	C10-N05	5.19	1.46	1.34
3	A	1202	ZJY	C23-N22	5.15	1.46	1.37
3	A	1202	ZJY	C24-N25	5.01	1.45	1.37
3	A	1202	ZJY	C06-N08	4.46	1.43	1.34
3	A	1202	ZJY	C53-C51	4.12	1.54	1.48
3	A	1202	ZJY	C04-C03	3.96	1.59	1.52
3	A	1202	ZJY	C14-N13	3.95	1.44	1.34
3	A	1202	ZJY	C52-C51	3.94	1.53	1.48
3	A	1202	ZJY	C44-C45	3.38	1.53	1.49
3	A	1202	ZJY	C49-C09	3.26	1.54	1.51
3	A	1202	ZJY	O15-C14	3.04	1.41	1.35
3	A	1202	ZJY	C01-N05	-2.99	1.40	1.47
3	A	1202	ZJY	S37-N35	2.80	1.64	1.60
3	A	1202	ZJY	O38-S37	2.29	1.47	1.43
3	A	1202	ZJY	O39-S37	2.07	1.47	1.43

All (31) bond angle outliers are listed below:

Mol	Chain	Res	Type	Atoms	Z	Observed(°)	Ideal(°)
3	A	1202	ZJY	C49-C09-N08	7.05	127.27	117.80
3	A	1202	ZJY	C21-O20-C03	-6.76	108.85	118.56
3	A	1202	ZJY	O39-S37-O38	-5.92	108.55	120.57
3	A	1202	ZJY	C02-C01-C06	5.39	122.07	111.32
3	A	1202	ZJY	O20-C03-C04	-5.21	95.54	108.19
3	A	1202	ZJY	F57-C54-C51	-4.93	106.57	112.32
3	A	1202	ZJY	C06-C01-N05	-4.81	99.32	112.56
3	A	1202	ZJY	C34-N35-S37	-4.80	116.33	124.08
3	A	1202	ZJY	C04-N05-C01	-4.54	105.14	111.70
3	A	1202	ZJY	O39-S37-C40	-4.30	104.15	107.60
3	A	1202	ZJY	O38-S37-C40	4.29	111.04	107.60
3	A	1202	ZJY	O36-C34-C09	4.08	125.61	120.74
3	A	1202	ZJY	C44-C09-C34	-4.04	108.23	116.80
3	A	1202	ZJY	O38-S37-N35	3.98	116.61	109.38
3	A	1202	ZJY	C34-C09-N08	3.95	120.31	116.06
3	A	1202	ZJY	O20-C03-C02	3.49	117.81	108.69
3	A	1202	ZJY	F55-C54-C51	-3.42	108.33	112.32
3	A	1202	ZJY	C26-N25-C24	-3.25	115.22	118.38
3	A	1202	ZJY	C17-O15-C14	-3.08	110.97	115.56
3	A	1202	ZJY	C02-C01-N05	3.05	107.13	103.10
3	A	1202	ZJY	C28-C27-C23	-3.04	116.08	119.27
3	A	1202	ZJY	C29-C30-C24	-2.93	117.15	120.84
3	A	1202	ZJY	F56-C54-C51	-2.78	109.08	112.32
3	A	1202	ZJY	C49-C09-C34	-2.67	108.48	117.37
3	A	1202	ZJY	C03-C04-N05	-2.50	99.20	102.62
3	A	1202	ZJY	O15-C17-C51	-2.39	103.86	109.21
3	A	1202	ZJY	C27-C23-C24	2.28	121.98	119.51
3	A	1202	ZJY	O15-C14-N13	2.25	115.08	110.50
3	A	1202	ZJY	O31-C28-C27	-2.24	118.31	124.43
3	A	1202	ZJY	C01-N05-C10	2.13	128.77	121.41
3	A	1202	ZJY	C30-C24-N25	-2.13	115.45	118.69

There are no chirality outliers.

All (10) torsion outliers are listed below:

Mol	Chain	Res	Type	Atoms
3	A	1202	ZJY	C17-C51-C54-F55
3	A	1202	ZJY	C17-C51-C54-F56
3	A	1202	ZJY	C17-C51-C54-F57
3	A	1202	ZJY	C34-N35-S37-C40
3	A	1202	ZJY	C18-C19-C50-C48
4	A	1203	EDO	O1-C1-C2-O2
4	A	1209	EDO	O1-C1-C2-O2

Continued on next page...

Continued from previous page...

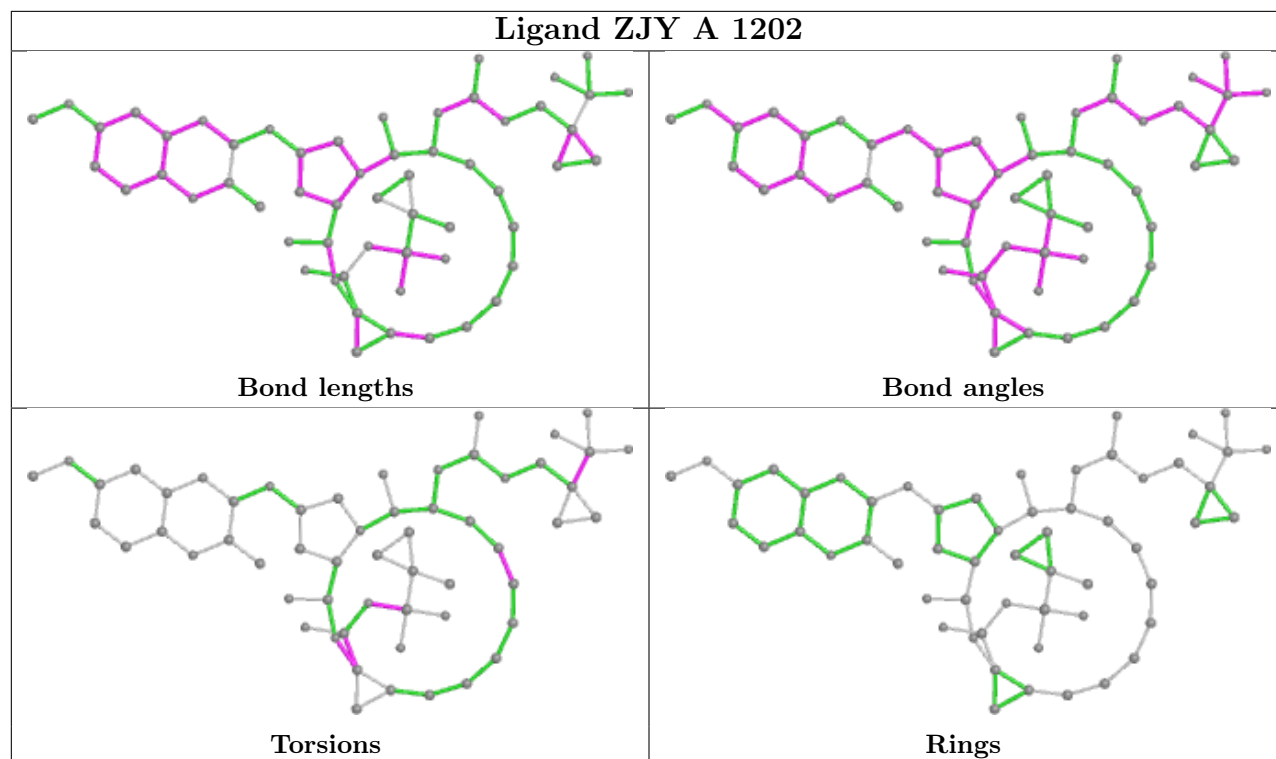
Mol	Chain	Res	Type	Atoms
3	A	1202	ZJY	C44-C09-N08-C06
4	A	1208	EDO	O1-C1-C2-O2
3	A	1202	ZJY	N08-C09-C34-O36

There are no ring outliers.

3 monomers are involved in 4 short contacts:

Mol	Chain	Res	Type	Clashes	Symm-Clashes
4	A	1205	EDO	1	0
4	A	1210	EDO	1	0
4	A	1206	EDO	2	0

The following is a two-dimensional graphical depiction of Mogul quality analysis of bond lengths, bond angles, torsion angles, and ring geometry for all instances of the Ligand of Interest. In addition, ligands with molecular weight > 250 and outliers as shown on the validation Tables will also be included. For torsion angles, if less than 5% of the Mogul distribution of torsion angles is within 10 degrees of the torsion angle in question, then that torsion angle is considered an outlier. Any bond that is central to one or more torsion angles identified as an outlier by Mogul will be highlighted in the graph. For rings, the root-mean-square deviation (RMSD) between the ring in question and similar rings identified by Mogul is calculated over all ring torsion angles. If the average RMSD is greater than 60 degrees and the minimal RMSD between the ring in question and any Mogul-identified rings is also greater than 60 degrees, then that ring is considered an outlier. The outliers are highlighted in purple. The color gray indicates Mogul did not find sufficient equivalents in the CSD to analyse the geometry.



5.7 Other polymers [\(i\)](#)

There are no such residues in this entry.

5.8 Polymer linkage issues [\(i\)](#)

There are no chain breaks in this entry.

6 Fit of model and data [i](#)

6.1 Protein, DNA and RNA chains [i](#)

In the following table, the column labelled ‘#RSRZ> 2’ contains the number (and percentage) of RSRZ outliers, followed by percent RSRZ outliers for the chain as percentile scores relative to all X-ray entries and entries of similar resolution. The OWAB column contains the minimum, median, 95th percentile and maximum values of the occupancy-weighted average B-factor per residue. The column labelled ‘Q< 0.9’ lists the number of (and percentage) of residues with an average occupancy less than 0.9.

Mol	Chain	Analysed	<RSRZ>	#RSRZ>2	OWAB(Å ²)	Q<0.9
1	A	199/200 (99%)	-0.19	9 (4%) 33 39	8, 14, 31, 42	0

All (9) RSRZ outliers are listed below:

Mol	Chain	Res	Type	RSRZ
1	A	983	MET	2.8
1	A	986	MET	2.7
1	A	1002	GLY	2.7
1	A	1003	ASP	2.4
1	A	1001	SER	2.4
1	A	985	SER	2.3
1	A	1180	ARG	2.3
1	A	1177	THR	2.3
1	A	1004	THR	2.1

6.2 Non-standard residues in protein, DNA, RNA chains [i](#)

There are no non-standard protein/DNA/RNA residues in this entry.

6.3 Carbohydrates [i](#)

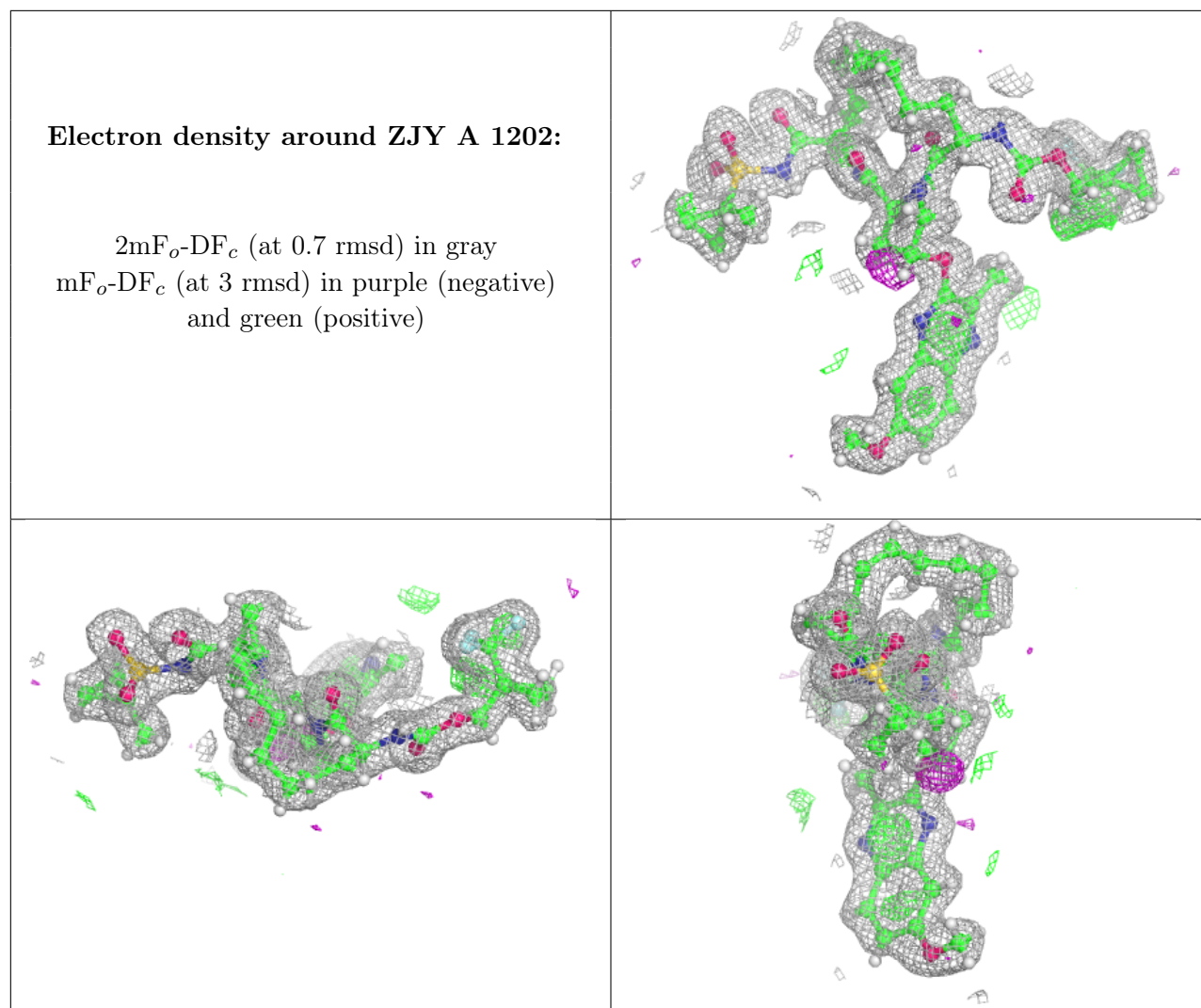
There are no monosaccharides in this entry.

6.4 Ligands [i](#)

In the following table, the Atoms column lists the number of modelled atoms in the group and the number defined in the chemical component dictionary. The B-factors column lists the minimum, median, 95th percentile and maximum values of B factors of atoms in the group. The column labelled ‘Q< 0.9’ lists the number of atoms with occupancy less than 0.9.

Mol	Type	Chain	Res	Atoms	RSCC	RSR	B-factors(\AA^2)	Q<0.9
4	EDO	A	1210	4/4	0.78	0.26	26,31,40,40	0
4	EDO	A	1209	4/4	0.79	0.15	33,46,55,57	0
4	EDO	A	1206	4/4	0.80	0.30	36,47,57,68	0
4	EDO	A	1203	4/4	0.83	0.26	32,41,49,49	0
4	EDO	A	1208	4/4	0.84	0.20	23,36,43,43	0
5	SO4	A	1212	5/5	0.84	0.29	33,48,60,61	0
4	EDO	A	1205	4/4	0.86	0.16	27,33,37,37	0
4	EDO	A	1204	4/4	0.86	0.30	29,37,53,53	0
4	EDO	A	1207	4/4	0.93	0.17	25,30,35,35	0
3	ZJY	A	1202	57/57	0.96	0.09	8,13,27,33	0
5	SO4	A	1211	5/5	0.97	0.12	18,26,26,28	0
2	ZN	A	1201	1/1	0.98	0.04	17,17,17,17	0

The following is a graphical depiction of the model fit to experimental electron density of all instances of the Ligand of Interest. In addition, ligands with molecular weight > 250 and outliers as shown on the geometry validation Tables will also be included. Each fit is shown from different orientation to approximate a three-dimensional view.



6.5 Other polymers [i](#)

There are no such residues in this entry.