



# wwPDB NMR Structure Validation Summary Report ⓘ

Jun 3, 2023 – 05:54 PM EDT

PDB ID : 2MN7  
BMRB ID : 19881  
Title : Solution structure of monomeric TatA of twin-arginine translocation system from *E. coli*  
Authors : Zhang, Y.; Hu, Y.; Jin, C.  
Deposited on : 2014-03-31

This is a wwPDB NMR Structure Validation Summary Report for a publicly released PDB entry.

We welcome your comments at [validation@mail.wwpdb.org](mailto:validation@mail.wwpdb.org)

A user guide is available at

<https://www.wwpdb.org/validation/2017/NMRValidationReportHelp>

with specific help available everywhere you see the ⓘ symbol.

The types of validation reports are described at

<http://www.wwpdb.org/validation/2017/FAQs#types>.

---

The following versions of software and data (see [references ⓘ](#)) were used in the production of this report:

MolProbity : 4.02b-467  
Percentile statistics : 20191225.v01 (using entries in the PDB archive December 25th 2019)  
wwPDB-RCI : v\_1n\_11\_5\_13\_A (Berjanski et al., 2005)  
PANAV : Wang et al. (2010)  
wwPDB-ShiftChecker : v1.2  
BMRB Restraints Analysis : v1.2  
Ideal geometry (proteins) : Engh & Huber (2001)  
Ideal geometry (DNA, RNA) : Parkinson et al. (1996)  
Validation Pipeline (wwPDB-VP) : 2.33

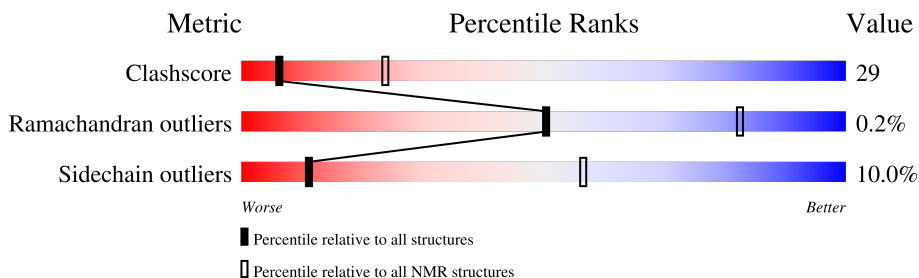
# 1 Overall quality at a glance

The following experimental techniques were used to determine the structure:

*SOLUTION NMR*

The overall completeness of chemical shifts assignment is 95%.

Percentile scores (ranging between 0-100) for global validation metrics of the entry are shown in the following graphic. The table shows the number of entries on which the scores are based.



Metric	Whole archive (#Entries)	NMR archive (#Entries)
Clashscore	158937	12864
Ramachandran outliers	154571	11451
Sidechain outliers	154315	11428

The table below summarises the geometric issues observed across the polymeric chains and their fit to the experimental data. The red, orange, yellow and green segments indicate the fraction of residues that contain outliers for  $\geq 3$ , 2, 1 and 0 types of geometric quality criteria. A cyan segment indicates the fraction of residues that are not part of the well-defined cores, and a grey segment represents the fraction of residues that are not modelled. The numeric value for each fraction is indicated below the corresponding segment, with a dot representing fractions  $\leq 5\%$

Mol	Chain	Length	Quality of chain
1	A	97	 19% 14% • 15% 51%

## 2 Ensemble composition and analysis

This entry contains 20 models. Model 18 is the overall representative, medoid model (most similar to other models). The authors have identified model 1 as representative, based on the following criterion: *lowest energy*.

The following residues are included in the computation of the global validation metrics.

Well-defined (core) protein residues			
Well-defined core	Residue range (total)	Backbone RMSD (Å)	Medoid model
1	A:6-A:25 (20)	0.36	18
2	A:30-A:42 (13)	0.11	16

Ill-defined regions of proteins are excluded from the global statistics.

Ligands and non-protein polymers are included in the analysis.

The models can be grouped into 4 clusters and 2 single-model clusters were found.

Cluster number	Models
1	3, 4, 5, 6, 7, 20
2	8, 11, 14, 15, 16
3	1, 9, 10, 13
4	17, 18, 19
Single-model clusters	2; 12

### 3 Entry composition

There is only 1 type of molecule in this entry. The entry contains 735 atoms, of which 384 are hydrogens and 0 are deuteriums.

- Molecule 1 is a protein called Sec-independent protein translocase protein TatA.

Mol	Chain	Residues	Atoms					Trace	
			Total	C	H	N	O		S
1	A	48	735	231	384	55	63	2	0

There are 8 discrepancies between the modelled and reference sequences:

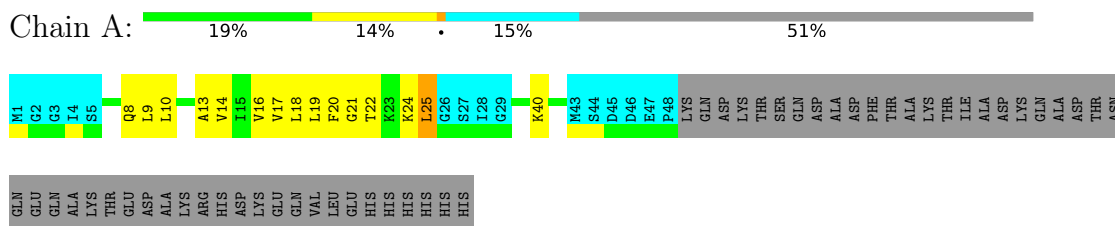
Chain	Residue	Modelled	Actual	Comment	Reference
A	90	LEU	-	expression tag	UNP P69428
A	91	GLU	-	expression tag	UNP P69428
A	92	HIS	-	expression tag	UNP P69428
A	93	HIS	-	expression tag	UNP P69428
A	94	HIS	-	expression tag	UNP P69428
A	95	HIS	-	expression tag	UNP P69428
A	96	HIS	-	expression tag	UNP P69428
A	97	HIS	-	expression tag	UNP P69428

## 4 Residue-property plots [i](#)

### 4.1 Average score per residue in the NMR ensemble

These plots are provided for all protein, RNA, DNA and oligosaccharide chains in the entry. The first graphic is the same as shown in the summary in section 1 of this report. The second graphic shows the sequence where residues are colour-coded according to the number of geometric quality criteria for which they contain at least one outlier: green = 0, yellow = 1, orange = 2 and red = 3 or more. Stretches of 2 or more consecutive residues without any outliers are shown as green connectors. Residues which are classified as ill-defined in the NMR ensemble, are shown in cyan with an underline colour-coded according to the previous scheme. Residues which were present in the experimental sample, but not modelled in the final structure are shown in grey.

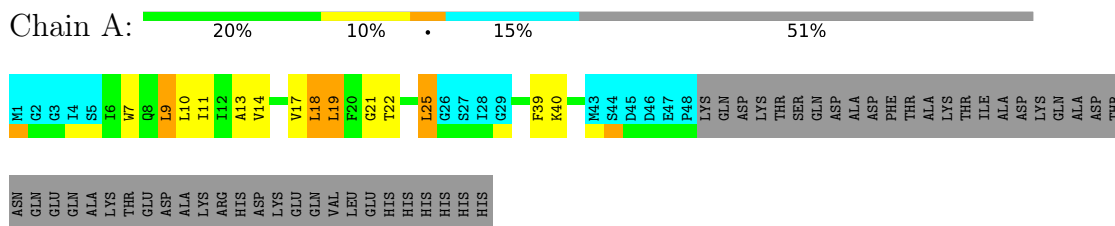
- Molecule 1: Sec-independent protein translocase protein TatA



### 4.2 Residue scores for the representative (medoid) model from the NMR ensemble

The representative model is number 18. Colouring as in section 4.1 above.

- Molecule 1: Sec-independent protein translocase protein TatA



## 5 Refinement protocol and experimental data overview

The models were refined using the following method: *simulated annealing*.

Of the 100 calculated structures, 20 were deposited, based on the following criterion: *structures with the lowest energy*.

The following table shows the software used for structure solution, optimisation and refinement.

Software name	Classification	Version
X-PLOR NIH	structure solution	
X-PLOR NIH	refinement	
HADDOCK	refinement	

The following table shows chemical shift validation statistics as aggregates over all chemical shift files. Detailed validation can be found in section 7 of this report.

Chemical shift file(s)	working_cs.cif
Number of chemical shift lists	1
Total number of shifts	1088
Number of shifts mapped to atoms	610
Number of unparsed shifts	0
Number of shifts with mapping errors	478
Number of shifts with mapping warnings	0
Assignment completeness (well-defined parts)	95%

## 6 Model quality [i](#)

### 6.1 Standard geometry [i](#)

There are no covalent bond-length or bond-angle outliers.

There are no bond-length outliers.

There are no bond-angle outliers.

There are no chirality outliers.

There are no planarity outliers.

### 6.2 Too-close contacts [i](#)

In the following table, the Non-H and H(model) columns list the number of non-hydrogen atoms and hydrogen atoms in each chain respectively. The H(added) column lists the number of hydrogen atoms added and optimized by MolProbity. The Clashes column lists the number of clashes averaged over the ensemble.

Mol	Chain	Non-H	H(model)	H(added)	Clashes
1	A	253	294	294	16±3
All	All	5060	5880	5880	315

The all-atom clashscore is defined as the number of clashes found per 1000 atoms (including hydrogen atoms). The all-atom clashscore for this structure is 29.

5 of 76 unique clashes are listed below, sorted by their clash magnitude.

Atom-1	Atom-2	Clash(Å)	Distance(Å)	Models	
				Worst	Total
1:A:25:LEU:HD12	1:A:25:LEU:H	0.88	1.29	8	10
1:A:25:LEU:H	1:A:25:LEU:HD12	0.86	1.30	10	9
1:A:13:ALA:O	1:A:17:VAL:HG23	0.80	1.76	5	20
1:A:19:LEU:HD12	1:A:20:PHE:N	0.78	1.92	8	8
1:A:8:GLN:HE21	1:A:8:GLN:N	0.78	1.77	19	1

### 6.3 Torsion angles [i](#)

#### 6.3.1 Protein backbone [i](#)

In the following table, the Percentiles column shows the percent Ramachandran outliers of the chain as a percentile score with respect to all PDB entries followed by that with respect to all NMR entries. The Analysed column shows the number of residues for which the backbone conformation was analysed and the total number of residues.

Mol	Chain	Analysed	Favoured	Allowed	Outliers	Percentiles	
1	A	33/97 (34%)	32±1 (98±3%)	1±1 (2±3%)	0±0 (0±1%)	50	82
All	All	660/1940 (34%)	645 (98%)	14 (2%)	1 (0%)	50	82

All 1 unique Ramachandran outliers are listed below.

Mol	Chain	Res	Type	Models (Total)
1	A	22	THR	1

### 6.3.2 Protein sidechains [i](#)

In the following table, the Percentiles column shows the percent sidechain outliers of the chain as a percentile score with respect to all PDB entries followed by that with respect to all NMR entries. The Analysed column shows the number of residues for which the sidechain conformation was analysed and the total number of residues.

Mol	Chain	Analysed	Rotameric	Outliers	Percentiles	
1	A	27/81 (33%)	24±1 (90±4%)	3±1 (10±4%)	11	56
All	All	540/1620 (33%)	486 (90%)	54 (10%)	11	56

5 of 12 unique residues with a non-rotameric sidechain are listed below. They are sorted by the frequency of occurrence in the ensemble.

Mol	Chain	Res	Type	Models (Total)
1	A	25	LEU	10
1	A	16	VAL	10
1	A	19	LEU	6
1	A	8	GLN	6
1	A	9	LEU	6

### 6.3.3 RNA [i](#)

There are no RNA molecules in this entry.

## 6.4 Non-standard residues in protein, DNA, RNA chains [i](#)

There are no non-standard protein/DNA/RNA residues in this entry.



## 6.5 Carbohydrates [i](#)

There are no monosaccharides in this entry.

## 6.6 Ligand geometry [i](#)

There are no ligands in this entry.

## 6.7 Other polymers [i](#)

There are no such molecules in this entry.

## 6.8 Polymer linkage issues [i](#)

There are no chain breaks in this entry.

## 7 Chemical shift validation i

The completeness of assignment taking into account all chemical shift lists is 95% for the well-defined parts and 95% for the entire structure.

### 7.1 Chemical shift list 1

File name: working\_cs.cif

Chemical shift list name: *assigned\_chem\_shift\_list\_1*

#### 7.1.1 Bookkeeping i

The following table shows the results of parsing the chemical shift list and reports the number of nuclei with statistically unusual chemical shifts.

Total number of shifts	1088
Number of shifts mapped to atoms	610
Number of unparsed shifts	0
Number of shifts with mapping errors	478
Number of shifts with mapping warnings	0
Number of shift outliers (ShiftChecker)	2

The following assigned chemical shifts were not mapped to the molecules present in the coordinate file.

- No matching atom found in the structure. First 5 (of 478) occurrences are reported below.

List ID	Chain	Res	Type	Atom	Shift Data		
					Value	Uncertainty	Ambiguity
1	A	49	LYS	H	8.381	0.02	1
1	A	49	LYS	HA	4.263	0.02	1
1	A	49	LYS	HB2	1.763	0.02	2
1	A	49	LYS	HB3	1.679	0.02	2
1	A	49	LYS	HG2	1.397	0.02	2
1	A	49	LYS	HG3	1.397	0.02	2
1	A	49	LYS	HD2	1.61	0.02	2
1	A	49	LYS	HD3	1.61	0.02	2
1	A	49	LYS	HE2	2.933	0.02	2
1	A	49	LYS	HE3	2.933	0.02	2
1	A	49	LYS	C	176.83	0.30	1
1	A	49	LYS	CA	56.362	0.30	1
1	A	49	LYS	CB	32.86	0.30	1
1	A	49	LYS	CG	24.68	0.30	1

*Continued on next page...*

*Continued from previous page...*

List ID	Chain	Res	Type	Atom	Shift Data		
					Value	Uncertainty	Ambiguity
1	A	49	LYS	CD	29.08	0.30	1
1	A	49	LYS	CE	42.25	0.30	1
1	A	49	LYS	N	122.625	0.30	1
1	A	50	GLN	H	8.371	0.02	1
1	A	50	GLN	HA	4.302	0.02	1
1	A	50	GLN	HB2	2.0	0.02	2
1	A	50	GLN	HB3	1.878	0.02	2
1	A	50	GLN	HG2	2.284	0.02	2
1	A	50	GLN	HG3	2.284	0.02	2
1	A	50	GLN	HE21	7.495	0.02	2
1	A	50	GLN	HE22	6.792	0.02	2
1	A	50	GLN	C	175.59	0.30	1
1	A	50	GLN	CA	55.81	0.30	1
1	A	50	GLN	CB	29.59	0.30	1
1	A	50	GLN	CG	33.86	0.30	1
1	A	50	GLN	N	122.249	0.30	1
1	A	50	GLN	NE2	113.303	0.30	1
1	A	51	ASP	H	8.383	0.02	1
1	A	51	ASP	HA	4.527	0.02	1
1	A	51	ASP	HB2	2.638	0.02	2
1	A	51	ASP	HB3	2.535	0.02	2
1	A	51	ASP	C	176.36	0.30	1
1	A	51	ASP	CA	54.33	0.30	1
1	A	51	ASP	CB	41.28	0.30	1
1	A	51	ASP	N	122.477	0.30	1
1	A	52	LYS	H	8.313	0.02	1
1	A	52	LYS	HA	4.331	0.02	1
1	A	52	LYS	HB2	1.814	0.02	2
1	A	52	LYS	HB3	1.696	0.02	2
1	A	52	LYS	HG2	1.378	0.02	2
1	A	52	LYS	HG3	1.378	0.02	2
1	A	52	LYS	HD2	1.605	0.02	2
1	A	52	LYS	HD3	1.605	0.02	2
1	A	52	LYS	HE2	2.926	0.02	2
1	A	52	LYS	HE3	2.926	0.02	2
1	A	52	LYS	C	177.06	0.30	1
1	A	52	LYS	CA	56.39	0.30	1
1	A	52	LYS	CB	32.84	0.30	1
1	A	52	LYS	CG	24.73	0.30	1
1	A	52	LYS	CD	28.81	0.30	1
1	A	52	LYS	CE	42.15	0.30	1

*Continued on next page...*

*Continued from previous page...*

List ID	Chain	Res	Type	Atom	Shift Data		
					Value	Uncertainty	Ambiguity
1	A	52	LYS	N	122.632	0.30	1
1	A	53	THR	H	8.238	0.02	1
1	A	53	THR	HA	4.268	0.02	1
1	A	53	THR	HB	4.192	0.02	1
1	A	53	THR	HG21	1.144	0.02	1
1	A	53	THR	HG22	1.144	0.02	1
1	A	53	THR	HG23	1.144	0.02	1
1	A	53	THR	C	175.04	0.30	1
1	A	53	THR	CA	62.48	0.30	1
1	A	53	THR	CB	69.83	0.30	1
1	A	53	THR	CG2	21.55	0.30	1
1	A	53	THR	N	115.318	0.30	1
1	A	54	SER	H	8.22	0.02	1
1	A	54	SER	HA	4.417	0.02	1
1	A	54	SER	HB2	3.857	0.02	2
1	A	54	SER	HB3	3.785	0.02	2
1	A	54	SER	C	174.71	0.30	1
1	A	54	SER	CA	58.66	0.30	1
1	A	54	SER	CB	63.77	0.30	1
1	A	54	SER	N	118.411	0.30	1
1	A	55	GLN	H	8.304	0.02	1
1	A	55	GLN	HA	4.255	0.02	1
1	A	55	GLN	HB2	2.048	0.02	2
1	A	55	GLN	HB3	1.895	0.02	2
1	A	55	GLN	HG2	2.263	0.02	2
1	A	55	GLN	HG3	2.263	0.02	2
1	A	55	GLN	C	175.91	0.30	1
1	A	55	GLN	CA	56.23	0.30	1
1	A	55	GLN	CB	29.42	0.30	1
1	A	55	GLN	CG	33.87	0.30	1
1	A	55	GLN	N	122.613	0.30	1
1	A	56	ASP	H	8.227	0.02	1
1	A	56	ASP	HA	4.532	0.02	1
1	A	56	ASP	HB2	2.542	0.02	2
1	A	56	ASP	HB3	2.542	0.02	2
1	A	56	ASP	C	176.32	0.30	1
1	A	56	ASP	CA	54.63	0.30	1
1	A	56	ASP	CB	40.96	0.30	1
1	A	56	ASP	N	121.923	0.30	1
1	A	57	ALA	H	8.112	0.02	1
1	A	57	ALA	HA	4.211	0.02	1

*Continued on next page...*

*Continued from previous page...*

List ID	Chain	Res	Type	Atom	Shift Data		
					Value	Uncertainty	Ambiguity
1	A	57	ALA	HB1	1.271	0.02	1
1	A	57	ALA	HB2	1.271	0.02	1
1	A	57	ALA	HB3	1.271	0.02	1
1	A	57	ALA	C	177.58	0.30	1
1	A	57	ALA	CA	53.01	0.30	1
1	A	57	ALA	CB	19.09	0.30	1
1	A	57	ALA	N	124.664	0.30	1
1	A	58	ASP	H	8.135	0.02	1
1	A	58	ASP	HA	4.541	0.02	1
1	A	58	ASP	HB2	2.581	0.02	2
1	A	58	ASP	HB3	2.499	0.02	2
1	A	58	ASP	C	176.55	0.30	1
1	A	58	ASP	CA	54.29	0.30	1
1	A	58	ASP	CB	41.04	0.30	1
1	A	58	ASP	N	119.465	0.30	1
1	A	59	PHE	H	8.092	0.02	1
1	A	59	PHE	HA	4.558	0.02	1
1	A	59	PHE	HB2	3.177	0.02	2
1	A	59	PHE	HB3	3.088	0.02	2
1	A	59	PHE	HD1	7.238	0.02	1
1	A	59	PHE	C	176.47	0.30	1
1	A	59	PHE	CA	58.43	0.30	1
1	A	59	PHE	CB	39.31	0.30	1
1	A	59	PHE	N	121.777	0.30	1
1	A	60	THR	H	8.03	0.02	1
1	A	60	THR	HA	4.154	0.02	1
1	A	60	THR	HB	4.159	0.02	1
1	A	60	THR	HG21	1.165	0.02	1
1	A	60	THR	HG22	1.165	0.02	1
1	A	60	THR	HG23	1.165	0.02	1
1	A	60	THR	C	174.46	0.30	1
1	A	60	THR	CA	62.78	0.30	1
1	A	60	THR	CB	69.776	0.30	1
1	A	60	THR	CG2	21.59	0.30	1
1	A	60	THR	N	116.185	0.30	1
1	A	61	ALA	H	8.054	0.02	1
1	A	61	ALA	HA	4.147	0.02	1
1	A	61	ALA	HB1	1.379	0.02	1
1	A	61	ALA	HB2	1.379	0.02	1
1	A	61	ALA	HB3	1.379	0.02	1
1	A	61	ALA	C	178.03	0.30	1

*Continued on next page...*

*Continued from previous page...*

List ID	Chain	Res	Type	Atom	Shift Data		
					Value	Uncertainty	Ambiguity
1	A	61	ALA	CA	53.01	0.30	1
1	A	61	ALA	CB	18.97	0.30	1
1	A	61	ALA	N	126.42	0.30	1
1	A	62	LYS	H	8.089	0.02	1
1	A	62	LYS	HA	4.265	0.02	1
1	A	62	LYS	HB2	1.775	0.02	2
1	A	62	LYS	HB3	1.708	0.02	2
1	A	62	LYS	HG2	1.4	0.02	2
1	A	62	LYS	HG3	1.4	0.02	2
1	A	62	LYS	HD2	1.605	0.02	2
1	A	62	LYS	HD3	1.605	0.02	2
1	A	62	LYS	HE2	2.93	0.02	2
1	A	62	LYS	HE3	2.93	0.02	2
1	A	62	LYS	C	177.16	0.30	1
1	A	62	LYS	CA	56.62	0.30	1
1	A	62	LYS	CB	33.01	0.30	1
1	A	62	LYS	CG	24.77	0.30	1
1	A	62	LYS	CD	29.04	0.30	1
1	A	62	LYS	CE	42.2	0.30	1
1	A	62	LYS	N	120.758	0.30	1
1	A	63	THR	H	8.063	0.02	1
1	A	63	THR	HA	4.281	0.02	1
1	A	63	THR	HB	4.154	0.02	1
1	A	63	THR	HG21	1.16	0.02	1
1	A	63	THR	HG22	1.16	0.02	1
1	A	63	THR	HG23	1.16	0.02	1
1	A	63	THR	C	174.88	0.30	1
1	A	63	THR	CA	62.224	0.30	1
1	A	63	THR	CB	69.78	0.30	1
1	A	63	THR	CG2	21.55	0.30	1
1	A	63	THR	N	115.909	0.30	1
1	A	64	ILE	H	8.044	0.02	1
1	A	64	ILE	HA	4.1	0.02	1
1	A	64	ILE	HB	1.846	0.02	1
1	A	64	ILE	HG12	1.452	0.02	9
1	A	64	ILE	HG13	1.166	0.02	9
1	A	64	ILE	HG21	0.841	0.02	4
1	A	64	ILE	HG22	0.841	0.02	4
1	A	64	ILE	HG23	0.841	0.02	4
1	A	64	ILE	HD11	0.878	0.02	1
1	A	64	ILE	HD12	0.878	0.02	1

*Continued on next page...*

*Continued from previous page...*

List ID	Chain	Res	Type	Atom	Shift Data		
					Value	Uncertainty	Ambiguity
1	A	64	ILE	HD13	0.878	0.02	1
1	A	64	ILE	C	176.24	0.30	1
1	A	64	ILE	CA	61.57	0.30	1
1	A	64	ILE	CB	38.57	0.30	1
1	A	64	ILE	CG1	27.46	0.30	1
1	A	64	ILE	CG2	17.42	0.30	1
1	A	64	ILE	CD1	12.94	0.30	1
1	A	64	ILE	N	123.42	0.30	1
1	A	65	ALA	H	8.177	0.02	1
1	A	65	ALA	HA	4.209	0.02	1
1	A	65	ALA	HB1	1.364	0.02	1
1	A	65	ALA	HB2	1.364	0.02	1
1	A	65	ALA	HB3	1.364	0.02	1
1	A	65	ALA	C	177.83	0.30	1
1	A	65	ALA	CA	52.84	0.30	1
1	A	65	ALA	CB	19.27	0.30	1
1	A	65	ALA	N	127.888	0.30	1
1	A	66	ASP	H	8.153	0.02	1
1	A	66	ASP	HA	4.471	0.02	1
1	A	66	ASP	HB2	2.588	0.02	2
1	A	66	ASP	HB3	2.588	0.02	2
1	A	66	ASP	C	176.47	0.30	1
1	A	66	ASP	CA	54.61	0.30	1
1	A	66	ASP	CB	41.18	0.30	1
1	A	66	ASP	N	120.365	0.30	1
1	A	67	LYS	H	8.168	0.02	1
1	A	67	LYS	HA	4.169	0.02	1
1	A	67	LYS	HB2	1.781	0.02	2
1	A	67	LYS	HB3	1.704	0.02	2
1	A	67	LYS	HG2	1.415	0.02	2
1	A	67	LYS	HG3	1.415	0.02	2
1	A	67	LYS	HD2	1.61	0.02	2
1	A	67	LYS	HD3	1.61	0.02	2
1	A	67	LYS	HE2	2.932	0.02	2
1	A	67	LYS	HE3	2.932	0.02	2
1	A	67	LYS	C	176.93	0.30	1
1	A	67	LYS	CA	56.58	0.30	1
1	A	67	LYS	CB	32.89	0.30	1
1	A	67	LYS	CG	24.98	0.30	1
1	A	67	LYS	CD	29.1	0.30	1
1	A	67	LYS	CE	41.95	0.30	1

*Continued on next page...*

*Continued from previous page...*

List ID	Chain	Res	Type	Atom	Shift Data		
					Value	Uncertainty	Ambiguity
1	A	67	LYS	N	121.46	0.30	1
1	A	68	GLN	H	8.282	0.02	1
1	A	68	GLN	HA	4.196	0.02	1
1	A	68	GLN	HB2	2.036	0.02	2
1	A	68	GLN	HB3	1.933	0.02	2
1	A	68	GLN	HG2	2.315	0.02	2
1	A	68	GLN	HG3	2.315	0.02	2
1	A	68	GLN	C	176.01	0.30	1
1	A	68	GLN	CA	56.15	0.30	1
1	A	68	GLN	CB	29.38	0.30	1
1	A	68	GLN	CG	33.86	0.30	1
1	A	68	GLN	N	121.668	0.30	1
1	A	69	ALA	H	8.18	0.02	1
1	A	69	ALA	HA	4.269	0.02	1
1	A	69	ALA	HB1	1.329	0.02	1
1	A	69	ALA	HB2	1.329	0.02	1
1	A	69	ALA	HB3	1.329	0.02	1
1	A	69	ALA	C	177.65	0.30	1
1	A	69	ALA	CA	52.78	0.30	1
1	A	69	ALA	CB	19.29	0.30	1
1	A	69	ALA	N	125.391	0.30	1
1	A	70	ASP	H	8.245	0.02	1
1	A	70	ASP	HA	4.54	0.02	1
1	A	70	ASP	HB2	2.673	0.02	2
1	A	70	ASP	HB3	2.577	0.02	2
1	A	70	ASP	C	176.85	0.30	1
1	A	70	ASP	CA	54.53	0.30	1
1	A	70	ASP	CB	41.16	0.30	1
1	A	70	ASP	N	120.336	0.30	1
1	A	71	THR	H	8.034	0.02	1
1	A	71	THR	HA	4.303	0.02	1
1	A	71	THR	HB	4.303	0.02	1
1	A	71	THR	HG21	1.191	0.02	1
1	A	71	THR	HG22	1.191	0.02	1
1	A	71	THR	HG23	1.191	0.02	1
1	A	71	THR	C	174.81	0.30	1
1	A	71	THR	CA	62.22	0.30	1
1	A	71	THR	CB	69.56	0.30	1
1	A	71	THR	CG2	21.59	0.30	1
1	A	71	THR	N	114.522	0.30	1
1	A	72	ASN	H	8.416	0.02	1

*Continued on next page...*



*Continued from previous page...*

List ID	Chain	Res	Type	Atom	Shift Data		
					Value	Uncertainty	Ambiguity
1	A	72	ASN	HA	4.63	0.02	1
1	A	72	ASN	HB2	2.794	0.02	2
1	A	72	ASN	HB3	2.749	0.02	2
1	A	72	ASN	C	175.58	0.30	1
1	A	72	ASN	CA	53.75	0.30	1
1	A	72	ASN	CB	38.82	0.30	1
1	A	72	ASN	N	121.423	0.30	1
1	A	73	GLN	H	8.284	0.02	1
1	A	73	GLN	HA	4.281	0.02	1
1	A	73	GLN	HB2	2.064	0.02	2
1	A	73	GLN	HB3	1.919	0.02	2
1	A	73	GLN	HG2	2.297	0.02	2
1	A	73	GLN	HG3	2.297	0.02	2
1	A	73	GLN	C	176.44	0.30	1
1	A	73	GLN	CA	56.42	0.30	1
1	A	73	GLN	CB	29.39	0.30	1
1	A	73	GLN	CG	33.83	0.30	1
1	A	73	GLN	N	121.32	0.30	1
1	A	74	GLU	H	8.348	0.02	1
1	A	74	GLU	HA	4.144	0.02	1
1	A	74	GLU	HB2	1.987	0.02	2
1	A	74	GLU	HB3	1.914	0.02	2
1	A	74	GLU	HG2	2.211	0.02	2
1	A	74	GLU	HG3	2.211	0.02	2
1	A	74	GLU	CA	56.99	0.30	1
1	A	74	GLU	CB	29.84	0.30	1
1	A	74	GLU	CG	36.25	0.30	1
1	A	74	GLU	N	122.461	0.30	1
1	A	75	GLN	H	8.297	0.02	1
1	A	75	GLN	HA	4.194	0.02	1
1	A	75	GLN	HB2	2.042	0.02	2
1	A	75	GLN	HB3	1.919	0.02	2
1	A	75	GLN	HG2	2.32	0.02	2
1	A	75	GLN	HG3	2.32	0.02	2
1	A	75	GLN	CA	56.15	0.30	1
1	A	75	GLN	CB	29.22	0.30	1
1	A	75	GLN	CG	33.822	0.30	1
1	A	76	ALA	H	8.2	0.02	1
1	A	76	ALA	HA	4.209	0.02	1
1	A	76	ALA	HB1	1.366	0.02	1
1	A	76	ALA	HB2	1.366	0.02	1

*Continued on next page...*

*Continued from previous page...*

List ID	Chain	Res	Type	Atom	Shift Data		
					Value	Uncertainty	Ambiguity
1	A	76	ALA	HB3	1.366	0.02	1
1	A	76	ALA	C	178.07	0.30	1
1	A	76	ALA	CA	52.89	0.30	1
1	A	76	ALA	CB	19.08	0.30	1
1	A	76	ALA	N	125.592	0.30	1
1	A	77	LYS	H	8.23	0.02	1
1	A	77	LYS	HA	4.26	0.02	1
1	A	77	LYS	HB2	1.779	0.02	2
1	A	77	LYS	HB3	1.71	0.02	2
1	A	77	LYS	HG2	1.367	0.02	2
1	A	77	LYS	HG3	1.367	0.02	2
1	A	77	LYS	HD2	1.615	0.02	2
1	A	77	LYS	HD3	1.615	0.02	2
1	A	77	LYS	HE2	2.93	0.02	2
1	A	77	LYS	HE3	2.93	0.02	2
1	A	77	LYS	CA	56.55	0.30	1
1	A	77	LYS	CB	32.95	0.30	1
1	A	77	LYS	CG	24.73	0.30	1
1	A	77	LYS	CD	29.1	0.30	1
1	A	77	LYS	CE	42.215	0.30	1
1	A	77	LYS	N	121.301	0.30	1
1	A	78	THR	H	8.078	0.02	1
1	A	78	THR	HA	4.238	0.02	1
1	A	78	THR	HB	4.21	0.02	1
1	A	78	THR	HG21	1.148	0.02	1
1	A	78	THR	HG22	1.148	0.02	1
1	A	78	THR	HG23	1.148	0.02	1
1	A	78	THR	C	175.05	0.30	1
1	A	78	THR	CA	62.27	0.30	1
1	A	78	THR	CB	69.77	0.30	1
1	A	78	THR	CG2	21.59	0.30	1
1	A	78	THR	N	115.894	0.30	1
1	A	79	GLU	H	8.452	0.02	1
1	A	79	GLU	HA	4.199	0.02	1
1	A	79	GLU	HB2	1.981	0.02	2
1	A	79	GLU	HB3	1.909	0.02	2
1	A	79	GLU	HG2	2.22	0.02	2
1	A	79	GLU	HG3	2.22	0.02	2
1	A	79	GLU	C	176.93	0.30	1
1	A	79	GLU	CA	57.24	0.30	1
1	A	79	GLU	CB	30.1	0.30	1

*Continued on next page...*

*Continued from previous page...*

List ID	Chain	Res	Type	Atom	Shift Data		
					Value	Uncertainty	Ambiguity
1	A	79	GLU	CG	36.18	0.30	1
1	A	79	GLU	N	123.412	0.30	1
1	A	80	ASP	H	8.281	0.02	1
1	A	80	ASP	HA	4.522	0.02	1
1	A	80	ASP	HB2	2.587	0.02	2
1	A	80	ASP	HB3	2.587	0.02	2
1	A	80	ASP	C	176.69	0.30	1
1	A	80	ASP	CA	55.09	0.30	1
1	A	80	ASP	CB	41.2	0.30	1
1	A	80	ASP	N	121.643	0.30	1
1	A	81	ALA	H	8.092	0.02	1
1	A	81	ALA	HA	4.224	0.02	1
1	A	81	ALA	HB1	1.366	0.02	1
1	A	81	ALA	HB2	1.366	0.02	1
1	A	81	ALA	HB3	1.366	0.02	1
1	A	81	ALA	C	178.35	0.30	1
1	A	81	ALA	CA	52.984	0.30	1
1	A	81	ALA	CB	19.04	0.30	1
1	A	81	ALA	N	124.643	0.30	1
1	A	82	LYS	H	8.05	0.02	1
1	A	82	LYS	HA	4.213	0.02	1
1	A	82	LYS	HB2	1.754	0.02	2
1	A	82	LYS	HB3	1.754	0.02	2
1	A	82	LYS	HG2	1.36	0.02	2
1	A	82	LYS	HG3	1.36	0.02	2
1	A	82	LYS	HD2	1.611	0.02	2
1	A	82	LYS	HD3	1.611	0.02	2
1	A	82	LYS	HE2	2.926	0.02	2
1	A	82	LYS	HE3	2.926	0.02	2
1	A	82	LYS	C	176.91	0.30	1
1	A	82	LYS	CA	56.65	0.30	1
1	A	82	LYS	CB	32.72	0.30	1
1	A	82	LYS	CG	24.76	0.30	1
1	A	82	LYS	CD	29.06	0.30	1
1	A	82	LYS	CE	42.16	0.30	1
1	A	82	LYS	N	119.741	0.30	1
1	A	83	ARG	H	7.972	0.02	1
1	A	83	ARG	HA	4.147	0.02	1
1	A	83	ARG	HB2	1.741	0.02	2
1	A	83	ARG	HB3	1.701	0.02	2
1	A	83	ARG	HG2	1.544	0.02	2

*Continued on next page...*

*Continued from previous page...*

List ID	Chain	Res	Type	Atom	Shift Data		
					Value	Uncertainty	Ambiguity
1	A	83	ARG	HG3	1.478	0.02	2
1	A	83	ARG	HD2	3.157	0.02	2
1	A	83	ARG	HD3	3.157	0.02	2
1	A	83	ARG	CA	56.56	0.30	1
1	A	83	ARG	CB	30.61	0.30	1
1	A	83	ARG	CG	27.18	0.30	1
1	A	83	ARG	CD	43.32	0.30	1
1	A	83	ARG	N	121.628	0.30	1
1	A	84	HIS	H	8.219	0.02	1
1	A	84	HIS	HA	4.607	0.02	1
1	A	84	HIS	HB2	3.209	0.02	2
1	A	84	HIS	HB3	3.073	0.02	2
1	A	84	HIS	CA	56.04	0.30	1
1	A	84	HIS	CB	29.36	0.30	1
1	A	85	ASP	H	8.245	0.02	1
1	A	85	ASP	HA	4.539	0.02	1
1	A	85	ASP	HB2	2.585	0.02	2
1	A	85	ASP	HB3	2.556	0.02	2
1	A	85	ASP	CA	54.7	0.30	1
1	A	85	ASP	CB	41.23	0.30	1
1	A	85	ASP	N	122.33	0.30	1
1	A	86	LYS	H	8.093	0.02	1
1	A	86	LYS	HA	4.264	0.02	1
1	A	86	LYS	HB2	1.851	0.02	2
1	A	86	LYS	HB3	1.851	0.02	2
1	A	86	LYS	HG2	1.37	0.02	2
1	A	86	LYS	HG3	1.37	0.02	2
1	A	86	LYS	HD2	1.618	0.02	2
1	A	86	LYS	HD3	1.618	0.02	2
1	A	86	LYS	HE2	2.929	0.02	2
1	A	86	LYS	HE3	2.929	0.02	2
1	A	86	LYS	CA	56.54	0.30	1
1	A	86	LYS	CB	32.72	0.30	1
1	A	86	LYS	CG	24.7	0.30	1
1	A	86	LYS	CD	29.25	0.30	1
1	A	86	LYS	CE	42.2	0.30	1
1	A	86	LYS	N	121.869	0.30	1
1	A	87	GLU	HA	4.241	0.02	1
1	A	87	GLU	HB2	1.975	0.02	2
1	A	87	GLU	HB3	1.913	0.02	2
1	A	87	GLU	HG2	2.22	0.02	2

*Continued on next page...*

*Continued from previous page...*

List ID	Chain	Res	Type	Atom	Shift Data		
					Value	Uncertainty	Ambiguity
1	A	87	GLU	HG3	2.22	0.02	2
1	A	87	GLU	CA	56.77	0.30	1
1	A	87	GLU	CB	30.05	0.30	1
1	A	87	GLU	CG	36.31	0.30	1
1	A	88	GLN	H	8.281	0.02	1
1	A	88	GLN	HA	4.305	0.02	1
1	A	88	GLN	HB2	1.985	0.02	2
1	A	88	GLN	HB3	1.89	0.02	2
1	A	88	GLN	HG2	2.28	0.02	2
1	A	88	GLN	HG3	2.28	0.02	2
1	A	88	GLN	C	175.96	0.30	1
1	A	88	GLN	CA	55.83	0.30	1
1	A	88	GLN	CB	29.7	0.30	1
1	A	88	GLN	CG	33.86	0.30	1
1	A	88	GLN	N	121.88	0.30	1
1	A	89	VAL	H	8.107	0.02	1
1	A	89	VAL	HA	4.041	0.02	1
1	A	89	VAL	HB	2.02	0.02	1
1	A	89	VAL	HG21	0.913	0.02	2
1	A	89	VAL	HG22	0.913	0.02	2
1	A	89	VAL	HG23	0.913	0.02	2
1	A	89	VAL	C	176.18	0.30	1
1	A	89	VAL	CA	62.56	0.30	1
1	A	89	VAL	CB	32.719	0.30	1
1	A	89	VAL	CG2	21.072	0.30	2
1	A	89	VAL	N	122.542	0.30	1
1	A	90	LEU	H	8.218	0.02	1
1	A	90	LEU	HA	4.312	0.02	1
1	A	90	LEU	HB2	1.55	0.02	2
1	A	90	LEU	HB3	1.462	0.02	2
1	A	90	LEU	HG	1.5	0.02	1
1	A	90	LEU	HD11	0.859	0.02	2
1	A	90	LEU	HD12	0.859	0.02	2
1	A	90	LEU	HD13	0.859	0.02	2
1	A	90	LEU	HD21	0.803	0.02	2
1	A	90	LEU	HD22	0.803	0.02	2
1	A	90	LEU	HD23	0.803	0.02	2
1	A	90	LEU	C	175.91	0.30	1
1	A	90	LEU	CA	55.11	0.30	1
1	A	90	LEU	CB	42.27	0.30	1
1	A	90	LEU	CG	26.96	0.30	1

*Continued on next page...*

Continued from previous page...

List ID	Chain	Res	Type	Atom	Shift Data		
					Value	Uncertainty	Ambiguity
1	A	90	LEU	CD2	23.706	0.30	2
1	A	90	LEU	N	126.462	0.30	1
1	A	91	GLU	H	8.211	0.02	1
1	A	91	GLU	HA	4.208	0.02	1
1	A	91	GLU	HB2	2.004	0.02	2
1	A	91	GLU	HB3	1.858	0.02	2
1	A	91	GLU	HG2	2.211	0.02	2
1	A	91	GLU	HG3	2.211	0.02	2
1	A	91	GLU	C	175.7	0.30	1
1	A	91	GLU	CA	56.46	0.30	1
1	A	91	GLU	CB	30.3	0.30	1
1	A	91	GLU	CG	36.14	0.30	1
1	A	91	GLU	N	122.105	0.30	1

### 7.1.2 Chemical shift referencing [i](#)

The following table shows the suggested chemical shift referencing corrections.

Nucleus	# values	Correction $\pm$ precision, ppm	Suggested action
$^{13}\text{C}_\alpha$	91	$-0.36 \pm 0.25$	None needed ( $< 0.5$ ppm)
$^{13}\text{C}_\beta$	84	$0.08 \pm 0.10$	None needed ( $< 0.5$ ppm)
$^{13}\text{C}'$	80	$-0.17 \pm 0.20$	None needed ( $< 0.5$ ppm)
$^{15}\text{N}$	87	$0.28 \pm 0.31$	None needed ( $< 0.5$ ppm)

### 7.1.3 Completeness of resonance assignments [i](#)

The following table shows the completeness of the chemical shift assignments for the well-defined regions of the structure. The overall completeness is 95%, i.e. 459 atoms were assigned a chemical shift out of a possible 485. 0 out of 9 assigned methyl groups (LEU and VAL) were assigned stereospecifically.

	Total	$^1\text{H}$	$^{13}\text{C}$	$^{15}\text{N}$
Backbone	167/168 (99%)	69/69 (100%)	65/66 (98%)	33/33 (100%)
Sidechain	278/285 (98%)	191/191 (100%)	86/88 (98%)	1/6 (17%)
Aromatic	14/32 (44%)	11/16 (69%)	2/15 (13%)	1/1 (100%)
Overall	459/485 (95%)	271/276 (98%)	153/169 (91%)	35/40 (88%)

### 7.1.4 Statistically unusual chemical shifts [i](#)

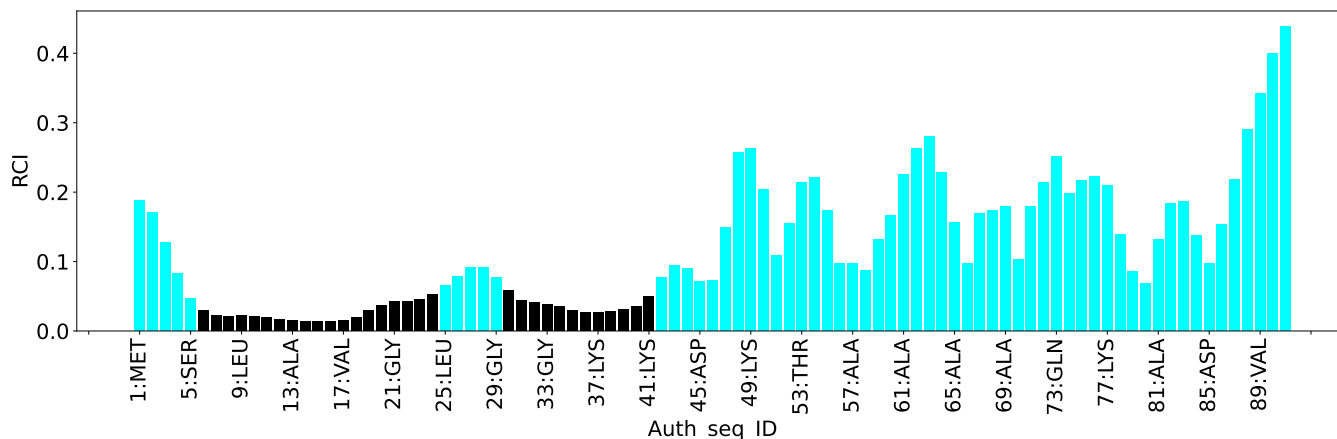
The following table lists the statistically unusual chemical shifts. These are statistical measures, and large deviations from the mean do not necessarily imply incorrect assignments. Molecules containing paramagnetic centres or hemes are expected to give rise to anomalous chemical shifts.

List Id	Chain	Res	Type	Atom	Shift, ppm	Expected range, ppm	Z-score
1	A	39	PHE	CD1	143.16	125.33 – 137.83	9.3
1	A	7	TRP	CH2	113.71	116.19 – 131.43	-6.6

### 7.1.5 Random Coil Index (RCI) plots [i](#)

The image below reports *random coil index* values for the protein chains in the structure. The height of each bar gives a probability of a given residue to be disordered, as predicted from the available chemical shifts and the amino acid sequence. A value above 0.2 is an indication of significant predicted disorder. The colour of the bar shows whether the residue is in the well-defined core (black) or in the ill-defined residue ranges (cyan), as described in section 2 on ensemble composition. If well-defined core and ill-defined regions are not identified then it is shown as gray bars.

Random coil index (RCI) for chain A:



## 8 NMR restraints analysis

### 8.1 Conformationally restricting restraints

The following table provides the summary of experimentally observed NMR restraints in different categories. Restraints are classified into different categories based on the sequence separation of the atoms involved.

Description	Value
Total distance restraints	2643
Intra-residue ( $ i-j =0$ )	752
Sequential ( $ i-j =1$ )	820
Medium range ( $ i-j >1$ and $ i-j <5$ )	996
Long range ( $ i-j \geq 5$ )	75
Inter-chain	0
Hydrogen bond restraints	0
Disulfide bond restraints	0
Total dihedral-angle restraints	65
Number of unmapped restraints	3
Number of restraints per residue	27.9
Number of long range restraints per residue <sup>1</sup>	0.8

<sup>1</sup>Long range hydrogen bonds and disulfide bonds are counted as long range restraints while calculating the number of long range restraints per residue

### 8.2 Residual restraint violations

This section provides the overview of the restraint violations analysis. The violations are binned as small, medium and large violations based on its absolute value. Average number of violations per model is calculated by dividing the total number of violations in each bin by the size of the ensemble.

#### 8.2.1 Average number of distance violations per model

Distance violations less than 0.1 Å are not included in the calculation.

Bins (Å)	Average number of violations per model	Max (Å)
0.1-0.2 (Small)	65.2	0.2
0.2-0.5 (Medium)	42.5	0.49
>0.5 (Large)	5.4	3.8



### 8.2.2 Average number of dihedral-angle violations per model [i](#)

Dihedral-angle violations less than 1° are not included in the calculation.

Bins (°)	Average number of violations per model	Max (°)
1.0-10.0 (Small)	10.4	3.3
10.0-20.0 (Medium)	None	None
>20.0 (Large)	None	None

## 9 Distance violation analysis i

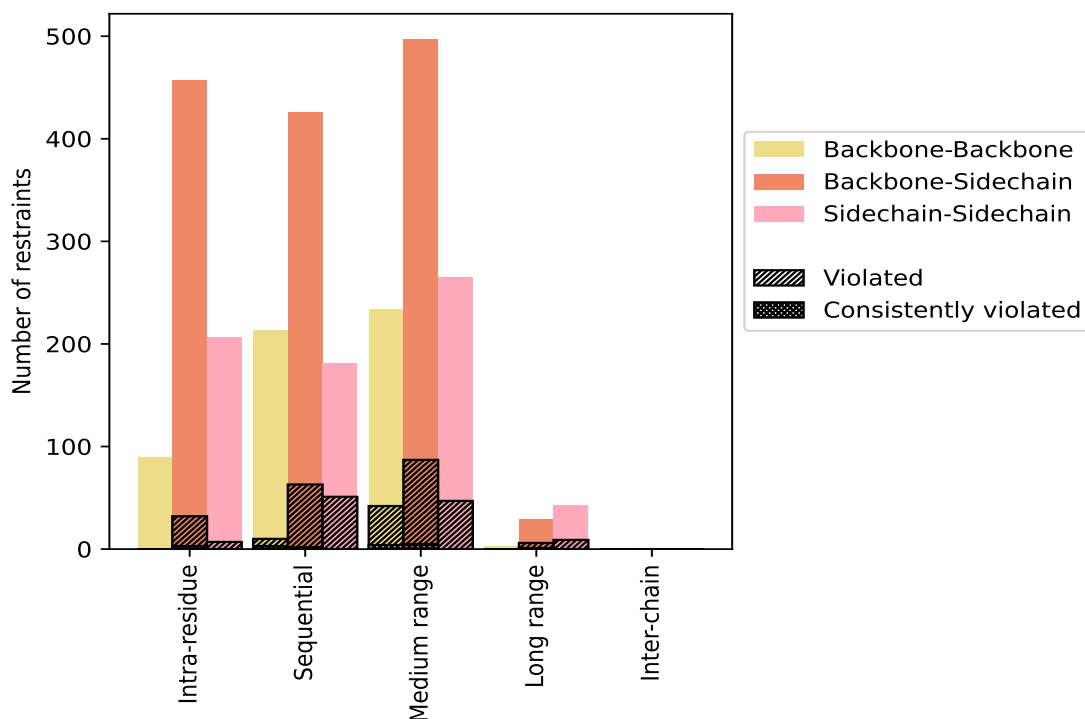
### 9.1 Summary of distance violations i

The following table shows the summary of distance violations in different restraint categories based on the sequence separation of the atoms involved. Each category is further sub-divided into three sub-categories based on the atoms involved. Violations less than 0.1 Å are not included in the statistics.

Restrains type	Count	% <sup>1</sup>	Violated <sup>3</sup>			Consistently Violated <sup>4</sup>		
			Count	% <sup>2</sup>	% <sup>1</sup>	Count	% <sup>2</sup>	% <sup>1</sup>
<b>Intra-residue (<math> i-j =0</math>)</b>	<b>752</b>	<b>28.5</b>	<b>39</b>	<b>5.2</b>	<b>1.5</b>	<b>3</b>	<b>0.4</b>	<b>0.1</b>
Backbone-Backbone	89	3.4	0	0.0	0.0	0	0.0	0.0
Backbone-Sidechain	457	17.3	32	7.0	1.2	3	0.7	0.1
Sidechain-Sidechain	206	7.8	7	3.4	0.3	0	0.0	0.0
<b>Sequential (<math> i-j =1</math>)</b>	<b>820</b>	<b>31.0</b>	<b>124</b>	<b>15.1</b>	<b>4.7</b>	<b>5</b>	<b>0.6</b>	<b>0.2</b>
Backbone-Backbone	213	8.1	10	4.7	0.4	3	1.4	0.1
Backbone-Sidechain	426	16.1	63	14.8	2.4	2	0.5	0.1
Sidechain-Sidechain	181	6.8	51	28.2	1.9	0	0.0	0.0
<b>Medium range (<math> i-j &gt;1</math> &amp; <math> i-j &lt;5</math>)</b>	<b>996</b>	<b>37.7</b>	<b>176</b>	<b>17.7</b>	<b>6.7</b>	<b>9</b>	<b>0.9</b>	<b>0.3</b>
Backbone-Backbone	234	8.9	42	17.9	1.6	4	1.7	0.2
Backbone-Sidechain	497	18.8	87	17.5	3.3	5	1.0	0.2
Sidechain-Sidechain	265	10.0	47	17.7	1.8	0	0.0	0.0
<b>Long range (<math> i-j \geq 5</math>)</b>	<b>75</b>	<b>2.8</b>	<b>15</b>	<b>20.0</b>	<b>0.6</b>	<b>1</b>	<b>1.3</b>	<b>0.0</b>
Backbone-Backbone	3	0.1	0	0.0	0.0	0	0.0	0.0
Backbone-Sidechain	29	1.1	6	20.7	0.2	1	3.4	0.0
Sidechain-Sidechain	43	1.6	9	20.9	0.3	0	0.0	0.0
<b>Inter-chain</b>	<b>0</b>	<b>0.0</b>	<b>0</b>	<b>0.0</b>	<b>0.0</b>	<b>0</b>	<b>0.0</b>	<b>0.0</b>
Backbone-Backbone	0	0.0	0	0.0	0.0	0	0.0	0.0
Backbone-Sidechain	0	0.0	0	0.0	0.0	0	0.0	0.0
Sidechain-Sidechain	0	0.0	0	0.0	0.0	0	0.0	0.0
<b>Hydrogen bond</b>	<b>0</b>	<b>0.0</b>	<b>0</b>	<b>0.0</b>	<b>0.0</b>	<b>0</b>	<b>0.0</b>	<b>0.0</b>
<b>Disulfide bond</b>	<b>0</b>	<b>0.0</b>	<b>0</b>	<b>0.0</b>	<b>0.0</b>	<b>0</b>	<b>0.0</b>	<b>0.0</b>
<b>Total</b>	<b>2643</b>	<b>100.0</b>	<b>354</b>	<b>13.4</b>	<b>13.4</b>	<b>18</b>	<b>0.7</b>	<b>0.7</b>
Backbone-Backbone	539	20.4	52	9.6	2.0	7	1.3	0.3
Backbone-Sidechain	1409	53.3	188	13.3	7.1	11	0.8	0.4
Sidechain-Sidechain	695	26.3	114	16.4	4.3	0	0.0	0.0

<sup>1</sup> percentage calculated with respect to the total number of distance restraints, <sup>2</sup> percentage calculated with respect to the number of restraints in a particular restraint category, <sup>3</sup> violated in at least one model, <sup>4</sup> violated in all the models

### 9.1.1 Bar chart : Distribution of distance restraints and violations [i](#)



Violated and consistently violated restraints are shown using different hatch patterns in their respective categories. The hydrogen bonds and disulfid bonds are counted in their appropriate category on the x-axis

## 9.2 Distance violation statistics for each model [i](#)

The following table provides the distance violation statistics for each model in the ensemble. Violations less than 0.1 Å are not included in the statistics.

Model ID	Number of violations					Total	Mean (Å)	Max (Å)	SD <sup>6</sup> (Å)	Median (Å)
	IR <sup>1</sup>	SQ <sup>2</sup>	MR <sup>3</sup>	LR <sup>4</sup>	IC <sup>5</sup>					
1	11	31	64	4	0	110	0.2	0.48	0.08	0.17
2	12	41	55	6	0	114	0.36	3.28	0.56	0.2
3	12	27	57	2	0	98	0.2	0.45	0.08	0.18
4	12	34	56	5	0	107	0.19	0.44	0.07	0.18
5	8	42	60	3	0	113	0.2	0.48	0.09	0.18
6	13	34	57	2	0	106	0.19	0.49	0.08	0.17
7	11	29	59	3	0	102	0.21	0.49	0.08	0.18
8	12	36	59	6	0	113	0.37	3.75	0.6	0.2
9	16	44	63	5	0	128	0.35	3.8	0.58	0.18
10	20	41	53	7	0	121	0.37	3.7	0.58	0.18
11	13	46	56	7	0	122	0.35	3.52	0.55	0.19

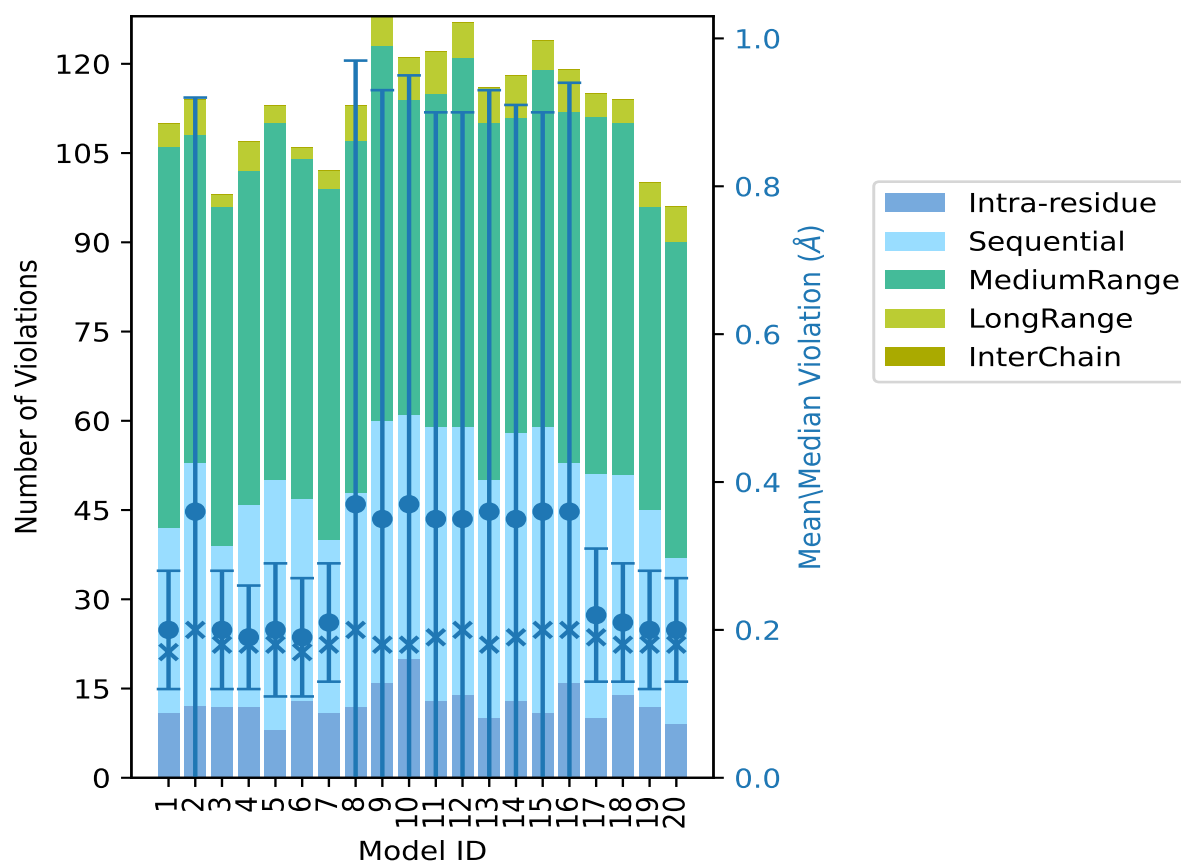
*Continued on next page...*

Continued from previous page...

Model ID	Number of violations					Total	Mean (Å)	Max (Å)	SD <sup>6</sup> (Å)	Median (Å)
	IR <sup>1</sup>	SQ <sup>2</sup>	MR <sup>3</sup>	LR <sup>4</sup>	IC <sup>5</sup>					
12	14	45	62	6	0	127	0.35	3.75	0.55	0.2
13	10	40	60	6	0	116	0.36	3.69	0.57	0.18
14	13	45	53	7	0	118	0.35	3.45	0.56	0.19
15	11	48	60	5	0	124	0.36	3.66	0.54	0.2
16	16	37	59	7	0	119	0.36	3.68	0.58	0.2
17	10	41	60	4	0	115	0.22	0.46	0.09	0.19
18	14	37	59	4	0	114	0.21	0.54	0.08	0.18
19	12	33	51	4	0	100	0.2	0.61	0.08	0.18
20	9	28	53	6	0	96	0.2	0.45	0.07	0.18

<sup>1</sup>Intra-residue restraints, <sup>2</sup>Sequential restraints, <sup>3</sup>Medium range restraints, <sup>4</sup>Long range restraints, <sup>5</sup>Inter-chain restraints, <sup>6</sup>Standard deviation

### 9.2.1 Bar graph : Distance Violation statistics for each model [\(i\)](#)



The mean(dot),median(x) and the standard deviation are shown in blue with respect to the y axis on the right

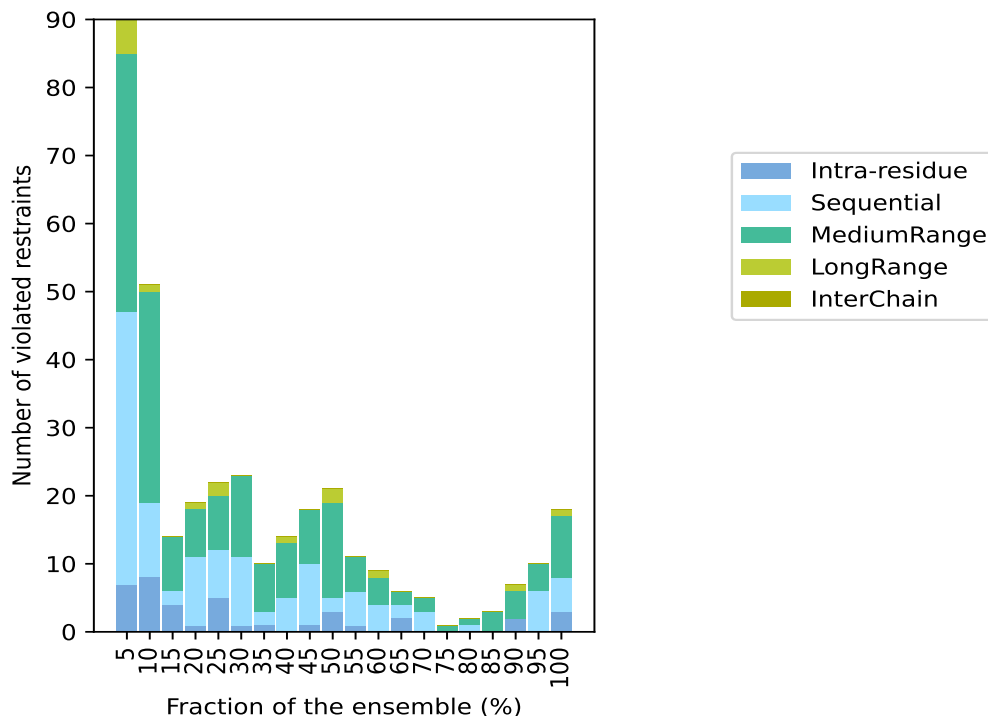
### 9.3 Distance violation statistics for the ensemble [i](#)

Violation analysis may find that some restraints are violated in few models and some are violated in most of models. The following table provides this information as number of violated restraints for a given fraction of the ensemble. In total, 2289(IR:713, SQ:696, MR:820, LR:60, IC:0) restraints are not violated in the ensemble.

Number of violated restraints						Fraction of the ensemble	
IR <sup>1</sup>	SQ <sup>2</sup>	MR <sup>3</sup>	LR <sup>4</sup>	IC <sup>5</sup>	Total	Count <sup>6</sup>	%
7	40	38	5	0	90	1	5.0
8	11	31	1	0	51	2	10.0
4	2	8	0	0	14	3	15.0
1	10	7	1	0	19	4	20.0
5	7	8	2	0	22	5	25.0
1	10	12	0	0	23	6	30.0
1	2	7	0	0	10	7	35.0
0	5	8	1	0	14	8	40.0
1	9	8	0	0	18	9	45.0
3	2	14	2	0	21	10	50.0
1	5	5	0	0	11	11	55.0
0	4	4	1	0	9	12	60.0
2	2	2	0	0	6	13	65.0
0	3	2	0	0	5	14	70.0
0	0	1	0	0	1	15	75.0
0	1	1	0	0	2	16	80.0
0	0	3	0	0	3	17	85.0
2	0	4	1	0	7	18	90.0
0	6	4	0	0	10	19	95.0
3	5	9	1	0	18	20	100.0

<sup>1</sup>Intra-residue restraints, <sup>2</sup>Sequential restraints, <sup>3</sup>Medium range restraints, <sup>4</sup>Long range restraints, <sup>5</sup>Inter-chain restraints, <sup>6</sup> Number of models with violations

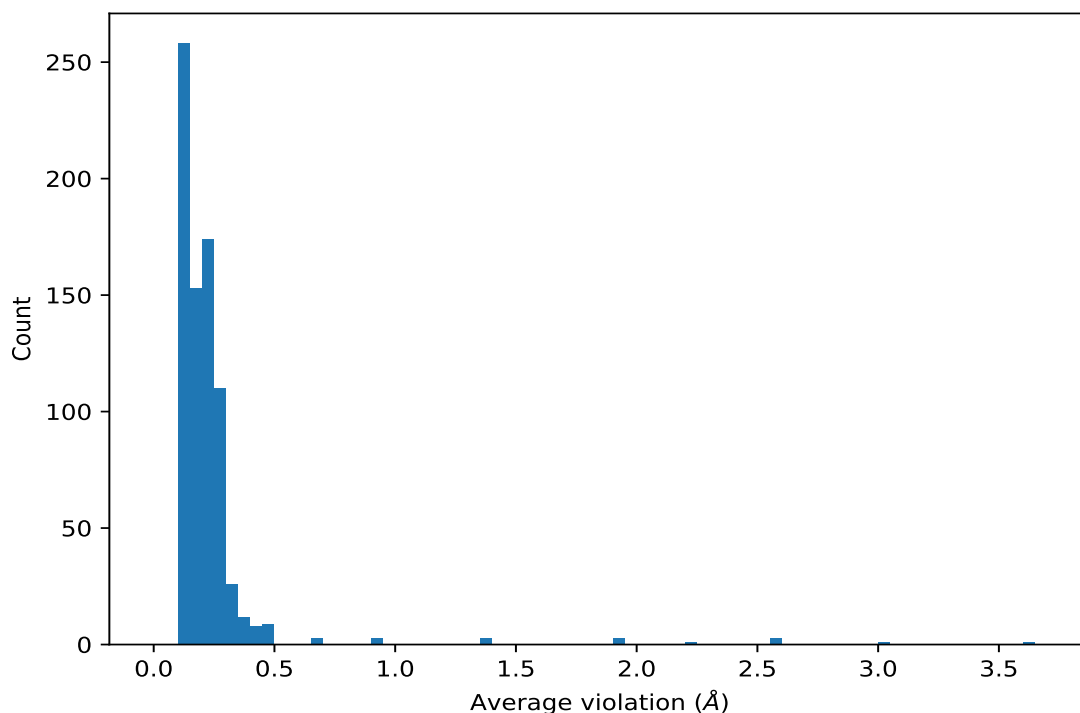
### 9.3.1 Bar graph : Distance violation statistics for the ensemble [i](#)



## 9.4 Most violated distance restraints in the ensemble [i](#)

### 9.4.1 Histogram : Distribution of mean distance violations [i](#)

The following histogram shows the distribution of the average value of the violation. The average is calculated for each restraint that is violated in more than one model over all the violated models in the ensemble



#### 9.4.2 Table: Most violated distance restraints [i](#)

The following table provides the mean and the standard deviation of the violations for the 10 worst performing restraints, sorted by number of violated models and the mean violation value. The Key (restraint list ID, restraint ID) is the unique identifier for a given restraint. Rows with same key represent combinatorial or ambiguous restraints and are counted as a single restraint.

Key	Atom-1	Atom-2	Models <sup>1</sup>	Mean (Å)	SD <sup>1</sup> (Å)	Median (Å)
(1,611)	1:A:25:LEU:HB2	1:A:28:ILE:H	20	0.4	0.06	0.39
(1,611)	1:A:25:LEU:HB3	1:A:28:ILE:H	20	0.4	0.06	0.39
(1,1438)	1:A:36:ILE:HA	1:A:39:PHE:HA	20	0.35	0.04	0.35
(1,2228)	1:A:36:ILE:HD11	1:A:37:LYS:HA	20	0.3	0.02	0.3
(1,2228)	1:A:36:ILE:HD12	1:A:37:LYS:HA	20	0.3	0.02	0.3
(1,2228)	1:A:36:ILE:HD13	1:A:37:LYS:HA	20	0.3	0.02	0.3
(1,634)	1:A:32:LEU:HB2	1:A:35:SER:H	20	0.28	0.04	0.29
(1,634)	1:A:32:LEU:HB3	1:A:35:SER:H	20	0.28	0.04	0.29
(1,273)	1:A:16:VAL:HA	1:A:22:THR:HG21	20	0.26	0.07	0.26
(1,273)	1:A:16:VAL:HA	1:A:22:THR:HG22	20	0.26	0.07	0.26
(1,273)	1:A:16:VAL:HA	1:A:22:THR:HG23	20	0.26	0.07	0.26
(1,594)	1:A:22:THR:HG21	1:A:26:GLY:H	20	0.26	0.04	0.26
(1,594)	1:A:22:THR:HG22	1:A:26:GLY:H	20	0.26	0.04	0.26
(1,594)	1:A:22:THR:HG23	1:A:26:GLY:H	20	0.26	0.04	0.26
(1,2232)	1:A:13:ALA:HA	1:A:17:VAL:HA	20	0.25	0.05	0.23
(1,2619)	1:A:32:LEU:HA	1:A:30:SER:HA	20	0.24	0.06	0.24

*Continued on next page...*

Continued from previous page...

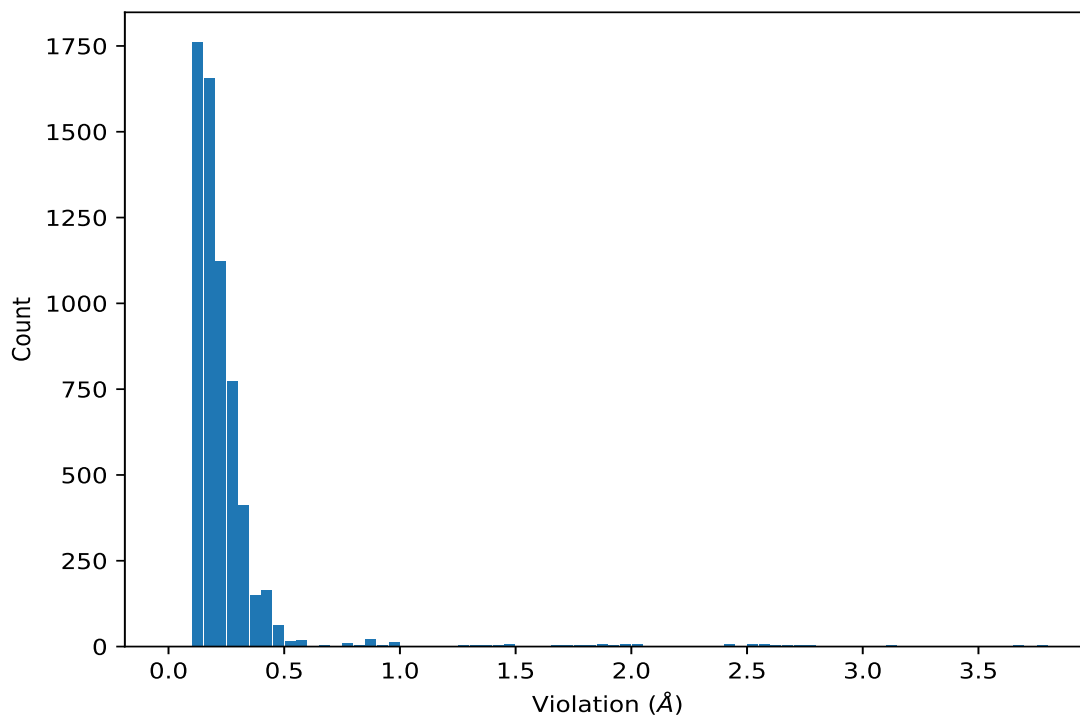
Key	Atom-1	Atom-2	Models <sup>1</sup>	Mean (Å)	SD <sup>1</sup> (Å)	Median (Å)
(1,1628)	1:A:9:LEU:HA	1:A:8:GLN:HA	20	0.23	0.04	0.24
(1,2013)	1:A:10:LEU:H	1:A:12:ILE:HA	20	0.22	0.05	0.2

<sup>1</sup>Number of violated models, <sup>2</sup>Standard deviation

## 9.5 All violated distance restraints [i](#)

### 9.5.1 Histogram : Distribution of distance violations [i](#)

The following histogram shows the distribution of the absolute value of the violation for all violated restraints in the ensemble.



### 9.5.2 Table : All distance violations [i](#)

The following table provides the 10 worst performing restraints, sorted by the violation value. The Key (restraint list ID, restraint ID) is the unique identifier for a given restraint. Rows with same key represent combinatorial or ambiguous restraints and are counted as a single restraint.

Key	Atom-1	Atom-2	Model ID	Violation (Å)
(1,246)	1:A:20:PHE:HD1	1:A:16:VAL:HA	9	3.8
(1,246)	1:A:20:PHE:HD1	1:A:16:VAL:HA	8	3.75
(1,246)	1:A:20:PHE:HD1	1:A:16:VAL:HA	12	3.75

Continued on next page...



*Continued from previous page...*

<b>Key</b>	<b>Atom-1</b>	<b>Atom-2</b>	<b>Model ID</b>	<b>Violation (Å)</b>
(1,246)	1:A:20:PHE:HD1	1:A:16:VAL:HA	10	3.7
(1,246)	1:A:20:PHE:HD1	1:A:16:VAL:HA	13	3.69
(1,246)	1:A:20:PHE:HD1	1:A:16:VAL:HA	16	3.68
(1,246)	1:A:20:PHE:HD1	1:A:16:VAL:HA	15	3.66
(1,246)	1:A:20:PHE:HD1	1:A:16:VAL:HA	11	3.52
(1,246)	1:A:20:PHE:HD1	1:A:16:VAL:HA	14	3.45
(1,246)	1:A:20:PHE:HD1	1:A:16:VAL:HA	2	3.28

## 10 Dihedral-angle violation analysis [i](#)

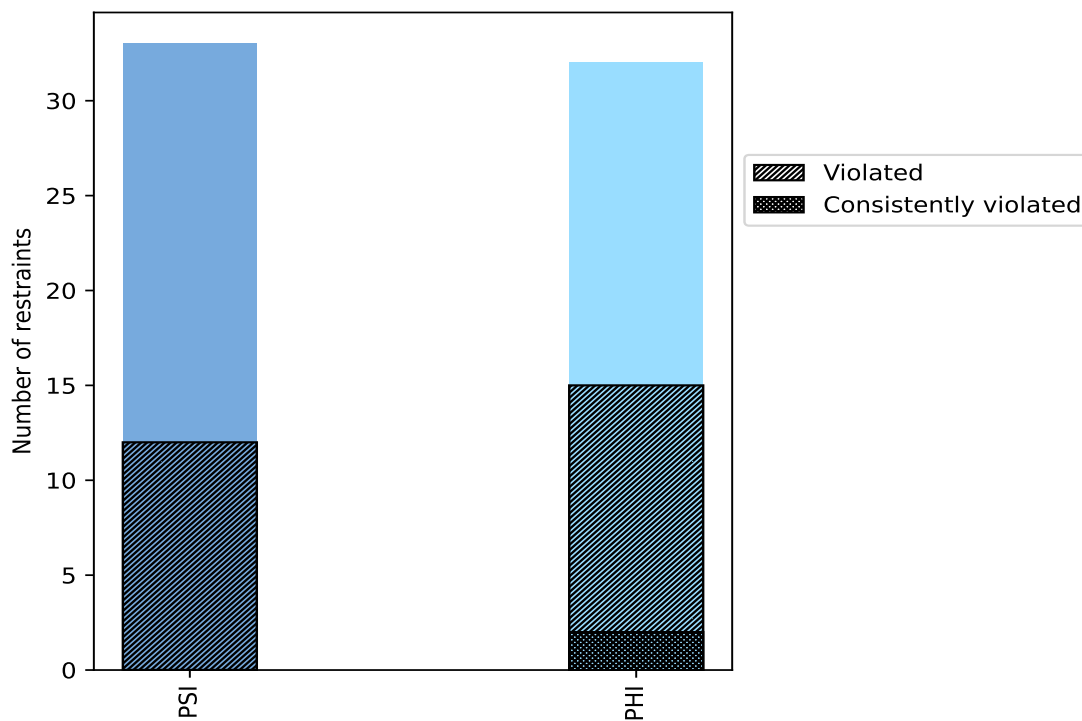
### 10.1 Summary of dihedral-angle violations [i](#)

The following table provides the summary of dihedral-angle violations in different dihedral-angle types. Violations less than 1° are not included in the calculation.

Angle type	Count	% <sup>1</sup>	Violated <sup>3</sup>			Consistently Violated <sup>4</sup>		
			Count	% <sup>2</sup>	% <sup>1</sup>	Count	% <sup>2</sup>	% <sup>1</sup>
PSI	33	50.8	12	36.4	18.5	0	0.0	0.0
PHI	32	49.2	15	46.9	23.1	2	6.2	3.1
Total	65	100.0	27	41.5	41.5	2	3.1	3.1

<sup>1</sup> percentage calculated with respect to total number of dihedral-angle restraints, <sup>2</sup> percentage calculated with respect to number of restraints in a particular dihedral-angle type, <sup>3</sup> violated in at least one model, <sup>4</sup> violated in all the models

#### 10.1.1 Bar chart : Distribution of dihedral-angles and violations [i](#)



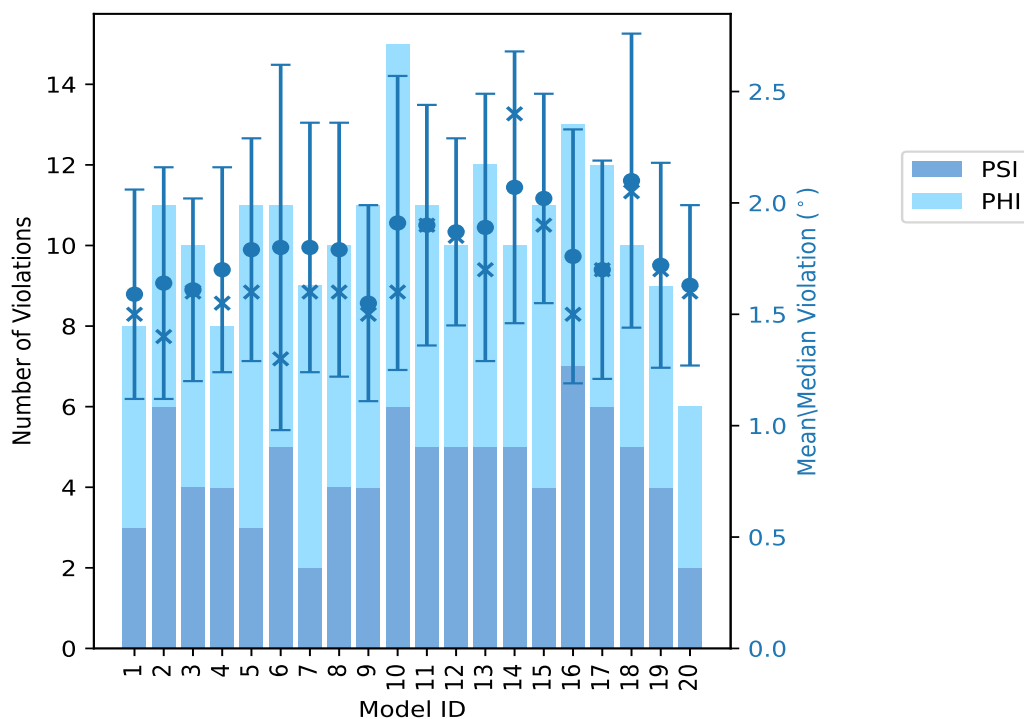
Violated and consistently violated restraints are shown using different hatch patterns in their respective categories

## 10.2 Dihedral-angle violation statistics for each model [i](#)

The following table provides the dihedral-angle violation statistics for each model in the ensemble. Violations less than 1° are not included in the statistics.

Model ID	Number of violations			Mean (°)	Max (°)	SD (°)	Median (°)
	PSI	PHI	Total				
1	3	5	8	1.59	2.5	0.47	1.5
2	6	5	11	1.64	2.6	0.52	1.4
3	4	6	10	1.61	2.4	0.41	1.6
4	4	4	8	1.7	2.4	0.46	1.55
5	3	8	11	1.79	2.5	0.5	1.6
6	5	6	11	1.8	3.2	0.82	1.3
7	2	7	9	1.8	2.8	0.56	1.6
8	4	6	10	1.79	3.0	0.57	1.6
9	4	7	11	1.55	2.4	0.44	1.5
10	6	9	15	1.91	3.1	0.66	1.6
11	5	6	11	1.9	2.9	0.54	1.9
12	5	5	10	1.87	2.6	0.42	1.85
13	5	7	12	1.89	3.1	0.6	1.7
14	5	5	10	2.07	2.9	0.61	2.4
15	4	7	11	2.02	2.7	0.47	1.9
16	7	6	13	1.76	2.9	0.57	1.5
17	6	6	12	1.7	2.6	0.49	1.7
18	5	5	10	2.1	3.3	0.66	2.05
19	4	5	9	1.72	2.7	0.46	1.7
20	2	4	6	1.63	2.3	0.36	1.6

### 10.2.1 Bar graph : Dihedral violation statistics for each model [i](#)



The mean(dot),median(x) and the standard deviation are shown in blue with respect to the y axis on the right

### 10.3 Dihedral-angle violation statistics for the ensemble [i](#)

Violation analysis may find that some restraints are violated in very few models and some are violated in most of models. The following table provides this information as number of violated restraints for a given fraction of ensemble.

Number of violated restraints			Fraction of the ensemble	
PSI	PHI	Total	Count <sup>1</sup>	%
4	5	9	1	5.0
0	1	1	2	10.0
0	0	0	3	15.0
1	0	1	4	20.0
0	2	2	5	25.0
0	0	0	6	30.0
1	1	2	7	35.0
1	0	1	8	40.0
1	0	1	9	45.0
1	0	1	10	50.0
0	0	0	11	55.0

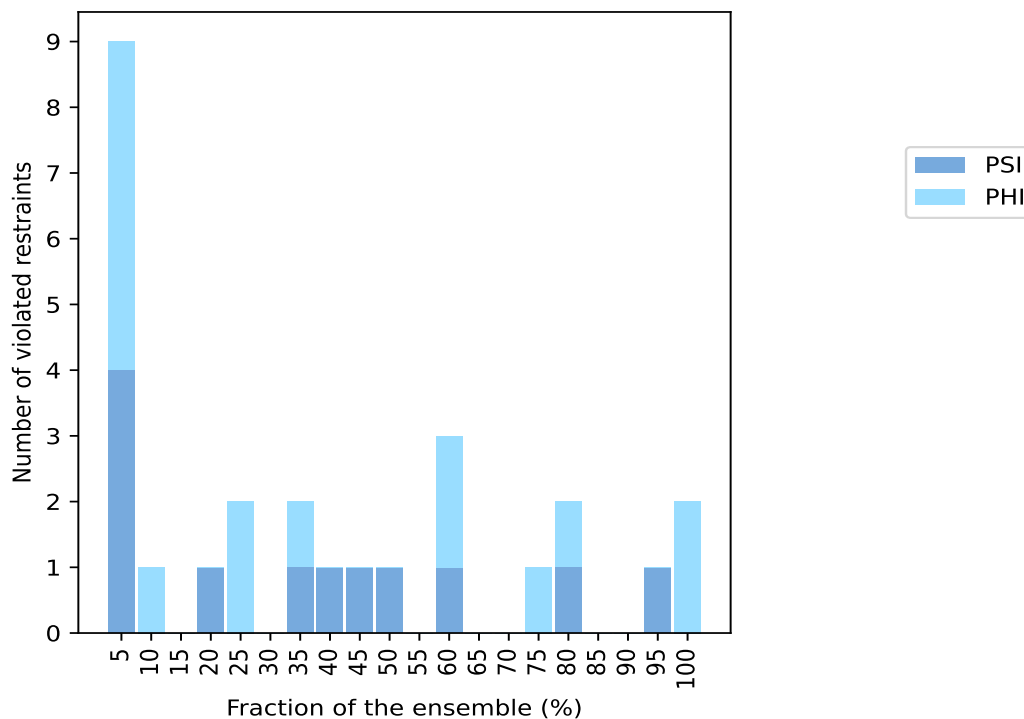
*Continued on next page...*

Continued from previous page...

Number of violated restraints			Fraction of the ensemble	
PSI	PHI	Total	Count <sup>1</sup>	%
1	2	3	12	60.0
0	0	0	13	65.0
0	0	0	14	70.0
0	1	1	15	75.0
1	1	2	16	80.0
0	0	0	17	85.0
0	0	0	18	90.0
1	0	1	19	95.0
0	2	2	20	100.0

<sup>1</sup> Number of models with violations

### 10.3.1 Bar graph : Dihedral-angle Violation statistics for the ensemble [i](#)

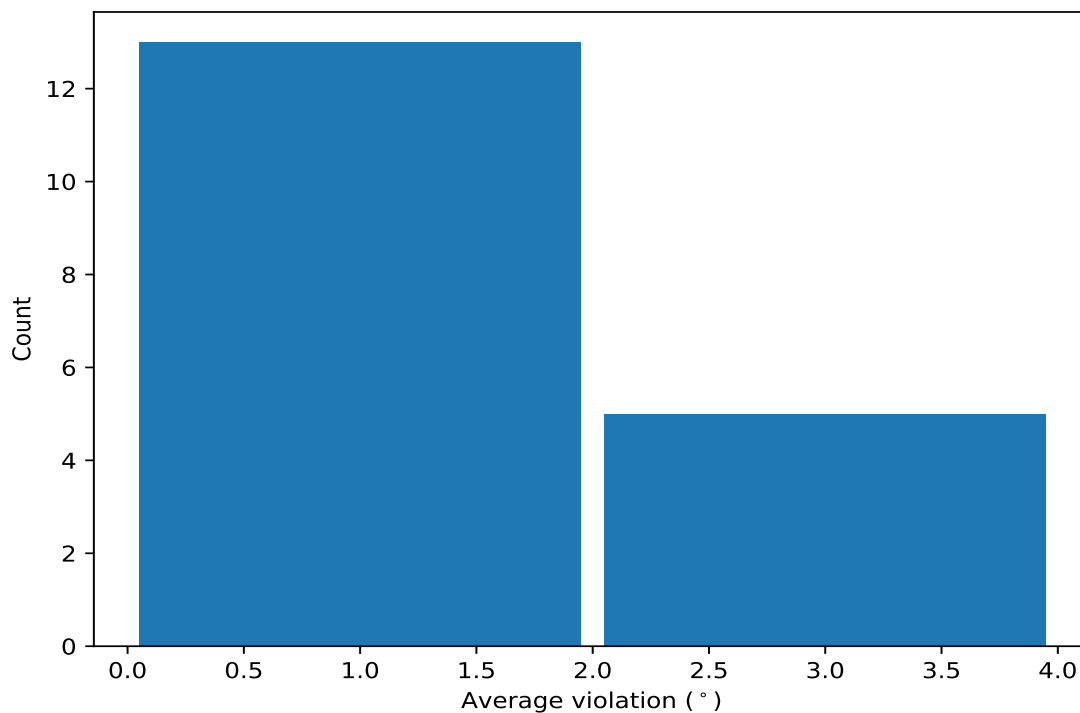


## 10.4 Most violated dihedral-angle restraints in the ensemble [i](#)

### 10.4.1 Histogram : Distribution of mean dihedral-angle violations [i](#)

The following histogram shows the distribution of the average value of the violation. The average is calculated for each restraint that is violated in more than one model over all the violated models

in the ensemble



#### 10.4.2 Table: Most violated dihedral-angle restraints [i](#)

The following table provides the mean and the standard deviation of the violations for the 10 worst performing restraints, sorted by number of violated models and the mean violation value. The Key (restraint list ID, restraint ID) is the unique identifier for a given restraint.

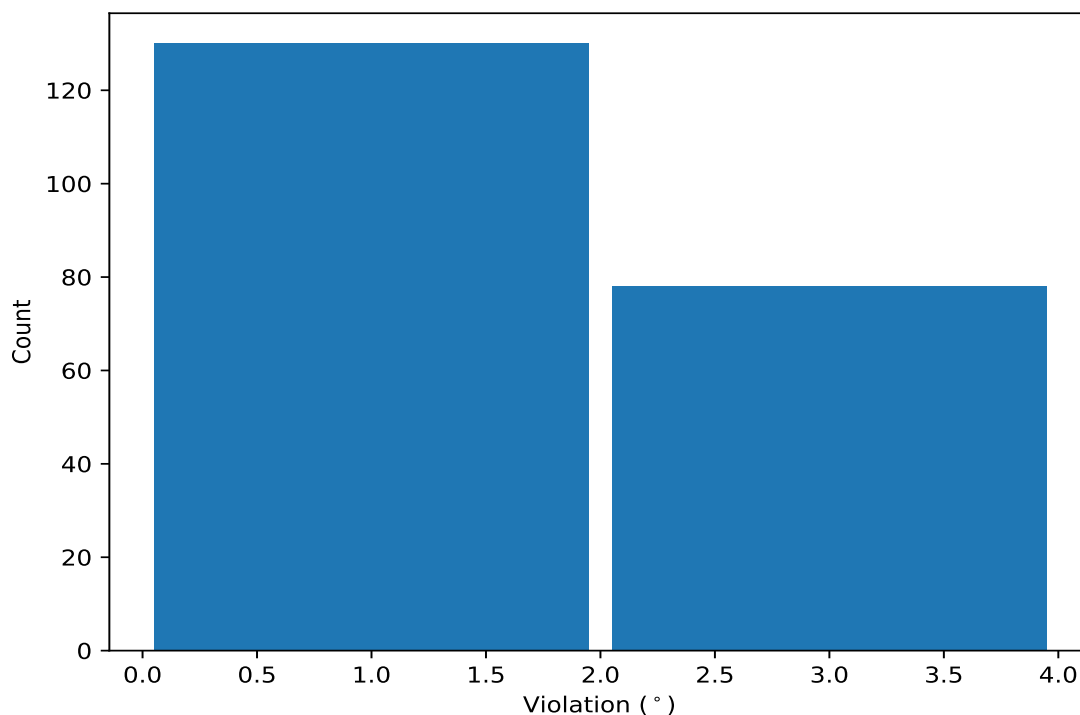
Key	Atom-1	Atom-2	Atom-3	Atom-4	Models <sup>1</sup>	Mean	SD <sup>2</sup>	Median
(1,21)	1:A:15:ILE:C	1:A:16:VAL:N	1:A:16:VAL:CA	1:A:16:VAL:C	20	2.15	0.42	2.2
(1,9)	1:A:9:LEU:C	1:A:10:LEU:N	1:A:10:LEU:CA	1:A:10:LEU:C	20	2.12	0.64	1.95
(1,20)	1:A:15:ILE:N	1:A:15:ILE:CA	1:A:15:ILE:C	1:A:16:VAL:N	19	1.96	0.48	2.0
(1,8)	1:A:9:LEU:N	1:A:9:LEU:CA	1:A:9:LEU:C	1:A:10:LEU:N	16	2.12	0.52	2.0
(1,32)	1:A:25:LEU:C	1:A:26:GLY:N	1:A:26:GLY:CA	1:A:26:GLY:C	16	1.75	0.57	1.55
(1,29)	1:A:19:LEU:C	1:A:20:PHE:N	1:A:20:PHE:CA	1:A:20:PHE:C	15	1.97	0.47	2.1
(1,23)	1:A:16:VAL:C	1:A:17:VAL:N	1:A:17:VAL:CA	1:A:17:VAL:C	12	1.66	0.6	1.4
(1,28)	1:A:19:LEU:N	1:A:19:LEU:CA	1:A:19:LEU:C	1:A:20:PHE:N	12	1.63	0.21	1.6
(1,52)	1:A:36:ILE:C	1:A:37:LYS:N	1:A:37:LYS:CA	1:A:37:LYS:C	12	1.36	0.19	1.35
(1,22)	1:A:16:VAL:N	1:A:16:VAL:CA	1:A:16:VAL:C	1:A:17:VAL:N	10	2.59	0.35	2.6

<sup>1</sup> Number of violated models, <sup>2</sup>Standard deviation, All angle values are in degree (°)

## 10.5 All violated dihedral-angle restraints [i](#)

### 10.5.1 Histogram : Distribution of violations [i](#)

The following histogram shows the distribution of the absolute value of the violation for all violated restraints in the ensemble.



### 10.5.2 Table: All violated dihedral-angle restraints [i](#)

The following table provides the list of violations for the 10 worst performing restraints, sorted by the violation value. The Key (restraint list ID, restraint ID) is the unique identifier for a given restraint.

Key	Atom-1	Atom-2	Atom-3	Atom-4	Model ID	Violation (°)
(1,8)	1:A:9:LEU:N	1:A:9:LEU:CA	1:A:9:LEU:C	1:A:10:LEU:N	18	3.3
(1,9)	1:A:9:LEU:C	1:A:10:LEU:N	1:A:10:LEU:CA	1:A:10:LEU:C	6	3.2
(1,9)	1:A:9:LEU:C	1:A:10:LEU:N	1:A:10:LEU:CA	1:A:10:LEU:C	10	3.1
(1,23)	1:A:16:VAL:C	1:A:17:VAL:N	1:A:17:VAL:CA	1:A:17:VAL:C	13	3.1
(1,9)	1:A:9:LEU:C	1:A:10:LEU:N	1:A:10:LEU:CA	1:A:10:LEU:C	18	3.0
(1,8)	1:A:9:LEU:N	1:A:9:LEU:CA	1:A:9:LEU:C	1:A:10:LEU:N	6	3.0
(1,22)	1:A:16:VAL:N	1:A:16:VAL:CA	1:A:16:VAL:C	1:A:17:VAL:N	8	3.0
(1,9)	1:A:9:LEU:C	1:A:10:LEU:N	1:A:10:LEU:CA	1:A:10:LEU:C	11	2.9
(1,9)	1:A:9:LEU:C	1:A:10:LEU:N	1:A:10:LEU:CA	1:A:10:LEU:C	14	2.9
(1,22)	1:A:16:VAL:N	1:A:16:VAL:CA	1:A:16:VAL:C	1:A:17:VAL:N	16	2.9