



Full wwPDB X-ray Structure Validation Report ⓘ

Oct 8, 2024 – 07:43 AM EDT

PDB ID : 3MO4
Title : The crystal structure of an alpha-(1-3,4)-fucosidase from *Bifidobacterium longum* subsp. *infantis* ATCC 15697
Authors : Tan, K.; Xu, X.; Cui, H.; Ng, J.; Savchenko, A.; Edwards, A.; Joachimiak, A.; Midwest Center for Structural Genomics (MCSG)
Deposited on : 2010-04-22
Resolution : 1.90 Å(reported)

This is a Full wwPDB X-ray Structure Validation Report for a publicly released PDB entry.

We welcome your comments at validation@mail.wwpdb.org

A user guide is available at

<https://www.wwpdb.org/validation/2017/XrayValidationReportHelp>

with specific help available everywhere you see the ⓘ symbol.

The types of validation reports are described at

<http://www.wwpdb.org/validation/2017/FAQs#types>.

The following versions of software and data (see [references ⓘ](#)) were used in the production of this report:

MolProbity : 4.02b-467
Mogul : 2022.3.0, CSD as543be (2022)
Xtriage (Phenix) : 1.20.1
EDS : 3.0
Percentile statistics : 20231227.v01 (using entries in the PDB archive December 27th 2023)
CCP4 : 9.0.003 (Gargrove)
Density-Fitness : 1.0.11
Ideal geometry (proteins) : Engh & Huber (2001)
Ideal geometry (DNA, RNA) : Parkinson et al. (1996)
Validation Pipeline (wwPDB-VP) : 2.39

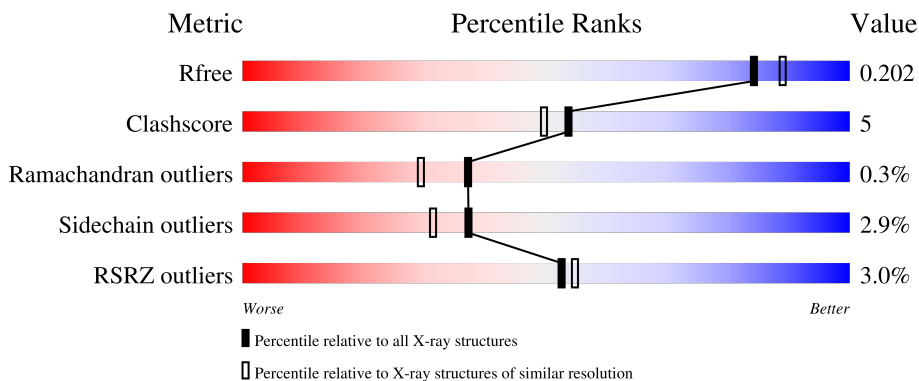
1 Overall quality at a glance

The following experimental techniques were used to determine the structure:

X-RAY DIFFRACTION

The reported resolution of this entry is 1.90 Å.

Percentile scores (ranging between 0-100) for global validation metrics of the entry are shown in the following graphic. The table shows the number of entries on which the scores are based.



Metric	Whole archive (#Entries)	Similar resolution (#Entries, resolution range(Å))
R_{free}	164625	7293 (1.90-1.90)
Clashscore	180529	8090 (1.90-1.90)
Ramachandran outliers	177936	8022 (1.90-1.90)
Sidechain outliers	177891	8022 (1.90-1.90)
RSRZ outliers	164620	7292 (1.90-1.90)

The table below summarises the geometric issues observed across the polymeric chains and their fit to the electron density. The red, orange, yellow and green segments of the lower bar indicate the fraction of residues that contain outliers for ≥ 3 , 2, 1 and 0 types of geometric quality criteria respectively. A grey segment represents the fraction of residues that are not modelled. The numeric value for each fraction is indicated below the corresponding segment, with a dot representing fractions $\leq 5\%$. The upper red bar (where present) indicates the fraction of residues that have poor fit to the electron density. The numeric value is given above the bar.

Mol	Chain	Length	Quality of chain
1	A	480	 4% 85% 9% • 5%
1	B	480	 2% 82% 12% • •

2 Entry composition [i](#)

There are 4 unique types of molecules in this entry. The entry contains 8073 atoms, of which 0 are hydrogens and 0 are deuteriums.

In the tables below, the ZeroOcc column contains the number of atoms modelled with zero occupancy, the AltConf column contains the number of residues with at least one atom in alternate conformation and the Trace column contains the number of residues modelled with at most 2 atoms.

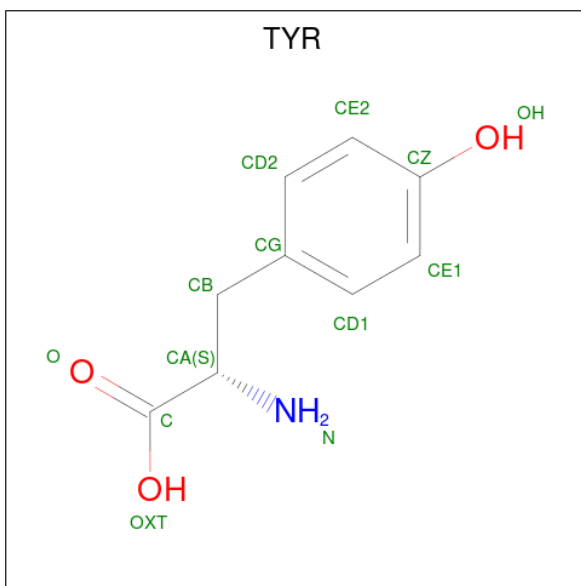
- Molecule 1 is a protein called Alpha-1,3/4-fucosidase.

Mol	Chain	Residues	Atoms						ZeroOcc	AltConf	Trace
			Total	C	N	O	S	Se			
1	A	455	Total 3578	C 2238	N 646	O 681	S 5	Se 8	0	4	0
1	B	459	Total 3666	C 2302	N 654	O 696	S 5	Se 9	0	14	0

There are 4 discrepancies between the modelled and reference sequences:

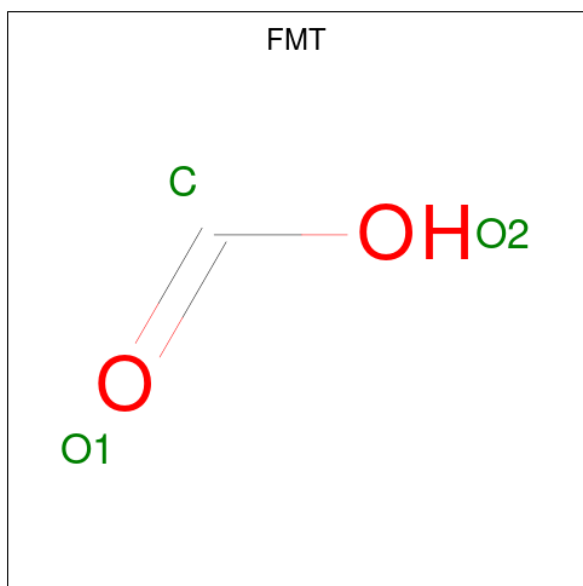
Chain	Residue	Modelled	Actual	Comment	Reference
A	-1	GLN	-	expression tag	UNP B7GNN8
A	0	GLY	-	expression tag	UNP B7GNN8
B	-1	GLN	-	expression tag	UNP B7GNN8
B	0	GLY	-	expression tag	UNP B7GNN8

- Molecule 2 is TYROSINE (three-letter code: TYR) (formula: C₉H₁₁NO₃).



Mol	Chain	Residues	Atoms				ZeroOcc	AltConf
			Total	C	N	O		
2	A	1	13	9	1	3	0	0

- Molecule 3 is FORMIC ACID (three-letter code: FMT) (formula: CH₂O₂).



Mol	Chain	Residues	Atoms			ZeroOcc	AltConf
			Total	C	O		
3	B	1	3	1	2	0	0

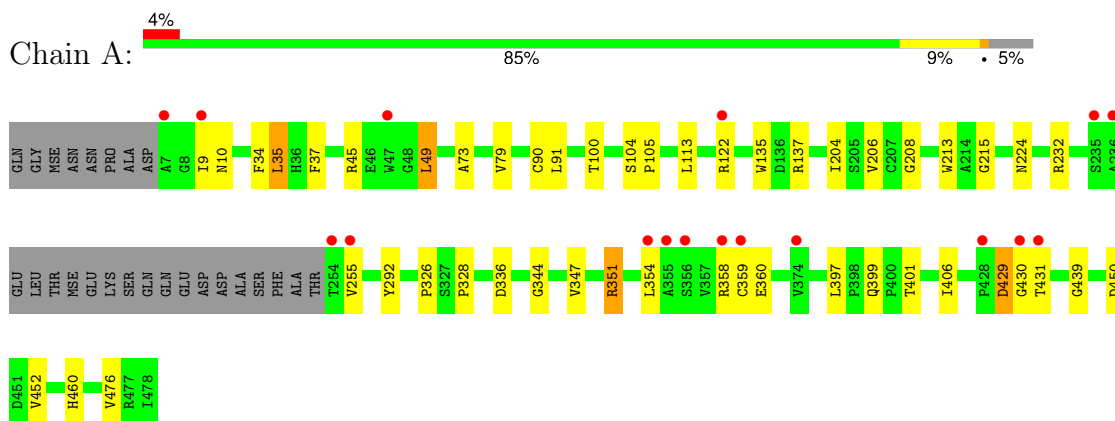
- Molecule 4 is water.

Mol	Chain	Residues	Atoms		ZeroOcc	AltConf
4	A	386	Total	O	0	0
			386	386		
4	B	427	Total	O	0	0
			427	427		

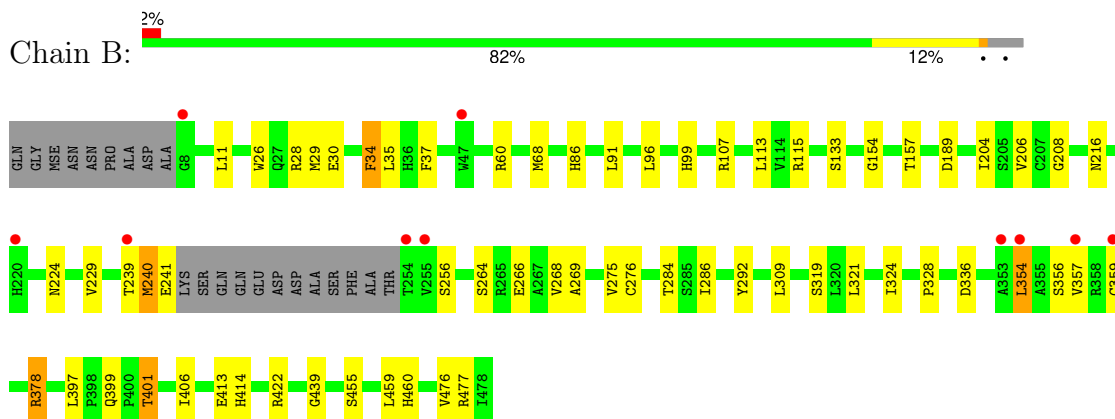
3 Residue-property plots [i](#)

These plots are drawn for all protein, RNA, DNA and oligosaccharide chains in the entry. The first graphic for a chain summarises the proportions of the various outlier classes displayed in the second graphic. The second graphic shows the sequence view annotated by issues in geometry and electron density. Residues are color-coded according to the number of geometric quality criteria for which they contain at least one outlier: green = 0, yellow = 1, orange = 2 and red = 3 or more. A red dot above a residue indicates a poor fit to the electron density ($RSRZ > 2$). Stretches of 2 or more consecutive residues without any outlier are shown as a green connector. Residues present in the sample, but not in the model, are shown in grey.

- Molecule 1: Alpha-1,3/4-fucosidase



- Molecule 1: Alpha-1,3/4-fucosidase



4 Data and refinement statistics

Property	Value	Source
Space group	P 21 21 21	Depositor
Cell constants a, b, c, α , β , γ	82.61Å 106.09Å 122.38Å 90.00° 90.00° 90.00°	Depositor
Resolution (Å)	41.93 – 1.90 41.93 – 1.90	Depositor EDS
% Data completeness (in resolution range)	94.2 (41.93-1.90) 99.3 (41.93-1.90)	Depositor EDS
R_{merge}	0.12	Depositor
R_{sym}	(Not available)	Depositor
$\langle I/\sigma(I) \rangle$ ¹	2.82 (at 1.89Å)	Xtrriage
Refinement program	PHENIX (phenix.refine: 1.5_2)	Depositor
R, R_{free}	0.162 , 0.205 0.165 , 0.202	Depositor DCC
R_{free} test set	4248 reflections (5.01%)	wwPDB-VP
Wilson B-factor (Å ²)	22.5	Xtrriage
Anisotropy	0.575	Xtrriage
Bulk solvent k_{sol} (e/Å ³), B_{sol} (Å ²)	0.35 , 49.2	EDS
L-test for twinning ²	$\langle L \rangle = 0.49$, $\langle L^2 \rangle = 0.32$	Xtrriage
Estimated twinning fraction	No twinning to report.	Xtrriage
F_o, F_c correlation	0.96	EDS
Total number of atoms	8073	wwPDB-VP
Average B, all atoms (Å ²)	27.0	wwPDB-VP

Xtrriage's analysis on translational NCS is as follows: *The largest off-origin peak in the Patterson function is 3.93% of the height of the origin peak. No significant pseudotranslation is detected.*

¹Intensities estimated from amplitudes.

²Theoretical values of $\langle |L| \rangle$, $\langle L^2 \rangle$ for acentric reflections are 0.5, 0.333 respectively for untwinned datasets, and 0.375, 0.2 for perfectly twinned datasets.

5 Model quality

5.1 Standard geometry

Bond lengths and bond angles in the following residue types are not validated in this section: FMT

The Z score for a bond length (or angle) is the number of standard deviations the observed value is removed from the expected value. A bond length (or angle) with $|Z| > 5$ is considered an outlier worth inspection. RMSZ is the root-mean-square of all Z scores of the bond lengths (or angles).

Mol	Chain	Bond lengths		Bond angles	
		RMSZ	# Z >5	RMSZ	# Z >5
1	A	0.32	0/3669	0.50	0/4976
1	B	0.33	0/3786	0.51	0/5133
All	All	0.33	0/7455	0.50	0/10109

There are no bond length outliers.

There are no bond angle outliers.

There are no chirality outliers.

There are no planarity outliers.

5.2 Too-close contacts

In the following table, the Non-H and H(model) columns list the number of non-hydrogen atoms and hydrogen atoms in the chain respectively. The H(added) column lists the number of hydrogen atoms added and optimized by MolProbity. The Clashes column lists the number of clashes within the asymmetric unit, whereas Symm-Clashes lists symmetry-related clashes.

Mol	Chain	Non-H	H(model)	H(added)	Clashes	Symm-Clashes
1	A	3578	0	3442	29	0
1	B	3666	0	3565	39	0
2	A	13	0	8	1	0
3	B	3	0	1	0	0
4	A	386	0	0	5	0
4	B	427	0	0	10	0
All	All	8073	0	7016	68	0

The all-atom clashscore is defined as the number of clashes found per 1000 atoms (including hydrogen atoms). The all-atom clashscore for this structure is 5.

All (68) close contacts within the same asymmetric unit are listed below, sorted by their clash

magnitude.

Atom-1	Atom-2	Interatomic distance (Å)	Clash overlap (Å)
1:B:240:MSE:O	1:B:241:GLU:HB2	1.67	0.93
1:B:91[B]:LEU:HD13	1:B:113:LEU:HD23	1.59	0.82
1:A:35:LEU:HD22	1:A:79:VAL:HG21	1.60	0.81
1:B:216:ASN:HB3	4:B:539:HOH:O	1.81	0.80
1:A:232:ARG:NH1	1:A:255:VAL:HB	2.02	0.75
1:A:450:ASP:O	1:A:452:VAL:HG23	1.90	0.71
1:A:91:LEU:HD13	1:A:113:LEU:HD23	1.71	0.70
1:B:266:GLU:HG2	4:B:849:HOH:O	1.91	0.69
1:B:239:THR:HG23	4:B:827:HOH:O	1.93	0.67
1:B:264:SER:OG	1:B:266:GLU:HG3	1.98	0.64
1:A:429:ASP:O	1:A:431:THR:N	2.31	0.64
1:B:99:HIS:HE1	4:B:608:HOH:O	1.82	0.62
1:A:35:LEU:HD22	1:A:79:VAL:CG2	2.30	0.62
1:B:354:LEU:HD13	1:B:476[A]:VAL:HG11	1.80	0.62
1:A:460:HIS:HD2	4:A:557:HOH:O	1.82	0.61
1:B:354:LEU:HD13	1:B:476[A]:VAL:CG1	2.31	0.61
1:A:347:VAL:O	1:A:351:ARG:HG3	1.99	0.61
1:B:460:HIS:HD2	4:B:883:HOH:O	1.85	0.60
1:A:224:ASN:OD1	1:A:439:GLY:HA3	2.02	0.60
1:B:86:HIS:HD2	1:B:133:SER:OG	1.84	0.60
1:B:422:ARG:HD2	4:B:619:HOH:O	2.03	0.57
1:B:189:ASP:HB2	4:B:504:HOH:O	2.04	0.57
1:A:359:CYS:SG	4:A:786:HOH:O	2.55	0.56
1:B:60:ARG:HA	4:B:893:HOH:O	2.06	0.53
1:B:354:LEU:O	1:B:357:VAL:HG22	2.09	0.51
1:B:359:CYS:SG	1:B:397:LEU:HD13	2.50	0.51
1:A:232:ARG:HH12	1:A:255:VAL:HB	1.72	0.51
1:B:476[B]:VAL:HG22	1:B:477:ARG:N	2.27	0.50
1:B:28:ARG:CZ	1:B:378[A]:ARG:HD2	2.42	0.50
1:A:122:ARG:NH2	4:A:703:HOH:O	2.42	0.49
1:B:275[A]:VAL:HG12	1:B:276:CYS:N	2.29	0.48
1:B:292:TYR:CD2	1:B:328:PRO:HD3	2.49	0.48
1:A:9:ILE:HD11	1:B:157:THR:HB	1.96	0.47
1:B:224:ASN:OD1	1:B:439:GLY:HA3	2.15	0.46
1:B:229:VAL:O	1:B:275[A]:VAL:HG13	2.16	0.46
1:B:204:ILE:HG22	1:B:208:GLY:HA3	1.98	0.46
1:B:284:THR:HG21	1:B:309:LEU:HD21	1.98	0.45
1:A:232:ARG:HH11	1:A:255:VAL:HB	1.79	0.45
1:A:45:ARG:NH1	1:A:49:LEU:HD22	2.31	0.45
1:A:232:ARG:HH12	1:A:255:VAL:N	2.15	0.45
1:A:104:SER:HB2	1:A:105:PRO:HD2	2.00	0.44

Continued on next page...

Continued from previous page...

Atom-1	Atom-2	Interatomic distance (Å)	Clash overlap (Å)
1:A:9:ILE:HG23	1:A:10:ASN:N	2.33	0.44
1:A:204:ILE:HG22	1:A:208:GLY:HA3	2.00	0.44
1:B:115:ARG:HD3	4:B:818:HOH:O	2.17	0.43
1:B:413[A]:GLU:HG2	4:B:511:HOH:O	2.18	0.43
2:A:479:TYR:N	4:A:764:HOH:O	2.51	0.43
1:B:413[B]:GLU:HG3	1:B:414:HIS:CD2	2.53	0.43
1:A:213:TRP:CZ2	1:A:215:GLY:HA2	2.54	0.43
1:A:292:TYR:CD2	1:A:328:PRO:HD3	2.53	0.43
1:A:354:LEU:CD1	1:A:476:VAL:HG11	2.48	0.43
1:B:399:GLN:O	1:B:401:THR:CG2	2.67	0.42
1:A:37:PHE:CD1	1:A:326:PRO:HB2	2.54	0.42
1:A:45:ARG:HD3	4:A:727:HOH:O	2.18	0.42
1:B:35:LEU:HD11	1:B:68:MSE:HE1	2.02	0.42
1:B:37:PHE:O	1:B:91[B]:LEU:HD11	2.20	0.41
1:A:406:ILE:C	1:A:406:ILE:HD12	2.40	0.41
1:B:26:TRP:HZ2	1:B:319[B]:SER:HG	1.67	0.41
1:B:286:ILE:HB	1:B:324[A]:ILE:HD13	2.02	0.41
1:A:135:TRP:CH2	1:A:137:ARG:NH1	2.88	0.41
1:A:73:ALA:O	1:A:344:GLY:HA3	2.21	0.41
1:A:90:CYS:HB2	1:A:100:THR:HG22	2.02	0.41
1:B:34:PHE:CD2	1:B:321:LEU:HD21	2.55	0.41
1:B:96:LEU:HD11	1:B:154:GLY:HA3	2.03	0.40
1:B:268:VAL:O	1:B:269:ALA:C	2.60	0.40
1:B:406:ILE:HD12	1:B:406:ILE:C	2.41	0.40
1:B:29:MSE:O	1:B:30:GLU:HB2	2.20	0.40
1:A:429:ASP:O	1:A:429:ASP:CG	2.60	0.40

There are no symmetry-related clashes.

5.3 Torsion angles [i](#)

5.3.1 Protein backbone [i](#)

In the following table, the Percentiles column shows the percent Ramachandran outliers of the chain as a percentile score with respect to all X-ray entries followed by that with respect to entries of similar resolution.

The Analysed column shows the number of residues for which the backbone conformation was analysed, and the total number of residues.

Mol	Chain	Analysed	Favoured	Allowed	Outliers	Percentiles	
1	A	455/480 (95%)	441 (97%)	12 (3%)	2 (0%)	30	22
1	B	469/480 (98%)	457 (97%)	11 (2%)	1 (0%)	44	36
All	All	924/960 (96%)	898 (97%)	23 (2%)	3 (0%)	37	29

All (3) Ramachandran outliers are listed below:

Mol	Chain	Res	Type
1	A	430	GLY
1	A	206	VAL
1	B	206	VAL

5.3.2 Protein sidechains [i](#)

In the following table, the Percentiles column shows the percent sidechain outliers of the chain as a percentile score with respect to all X-ray entries followed by that with respect to entries of similar resolution.

The Analysed column shows the number of residues for which the sidechain conformation was analysed, and the total number of residues.

Mol	Chain	Analysed	Rotameric	Outliers	Percentiles	
1	A	377/384 (98%)	366 (97%)	11 (3%)	37	31
1	B	392/384 (102%)	380 (97%)	12 (3%)	35	29
All	All	769/768 (100%)	746 (97%)	23 (3%)	37	30

All (23) residues with a non-rotameric sidechain are listed below:

Mol	Chain	Res	Type
1	A	34	PHE
1	A	35	LEU
1	A	49	LEU
1	A	336	ASP
1	A	351	ARG
1	A	358	ARG
1	A	360	GLU
1	A	397	LEU
1	A	399	GLN
1	A	401	THR
1	A	429	ASP
1	B	11	LEU
1	B	34	PHE

Continued on next page...

Continued from previous page...

Mol	Chain	Res	Type
1	B	107	ARG
1	B	240	MSE
1	B	256	SER
1	B	336	ASP
1	B	354	LEU
1	B	356	SER
1	B	378[A]	ARG
1	B	378[B]	ARG
1	B	401	THR
1	B	455	SER

Sometimes sidechains can be flipped to improve hydrogen bonding and reduce clashes. All (5) such sidechains are listed below:

Mol	Chain	Res	Type
1	A	437	GLN
1	B	86	HIS
1	B	99	HIS
1	B	294	GLN
1	B	460	HIS

5.3.3 RNA [i](#)

There are no RNA molecules in this entry.

5.4 Non-standard residues in protein, DNA, RNA chains [i](#)

There are no non-standard protein/DNA/RNA residues in this entry.

5.5 Carbohydrates [i](#)

There are no oligosaccharides in this entry.

5.6 Ligand geometry [i](#)

2 ligands are modelled in this entry.

In the following table, the Counts columns list the number of bonds (or angles) for which Mogul statistics could be retrieved, the number of bonds (or angles) that are observed in the model and the number of bonds (or angles) that are defined in the Chemical Component Dictionary. The

Link column lists molecule types, if any, to which the group is linked. The Z score for a bond length (or angle) is the number of standard deviations the observed value is removed from the expected value. A bond length (or angle) with $|Z| > 2$ is considered an outlier worth inspection. RMSZ is the root-mean-square of all Z scores of the bond lengths (or angles).

Mol	Type	Chain	Res	Link	Bond lengths			Bond angles		
					Counts	RMSZ	# Z > 2	Counts	RMSZ	# Z > 2
2	TYR	A	479	-	12,13,13	0.70	1 (8%)	13,17,17	0.78	1 (7%)
3	FMT	B	479	-	2,2,2	0.69	0	1,1,1	0.04	0

In the following table, the Chirals column lists the number of chiral outliers, the number of chiral centers analysed, the number of these observed in the model and the number defined in the Chemical Component Dictionary. Similar counts are reported in the Torsion and Rings columns. '-' means no outliers of that kind were identified.

Mol	Type	Chain	Res	Link	Chirals	Torsions	Rings
2	TYR	A	479	-	-	4/8/8/8	0/1/1/1

All (1) bond length outliers are listed below:

Mol	Chain	Res	Type	Atoms	Z	Observed(Å)	Ideal(Å)
2	A	479	TYR	OXT-C	-2.11	1.23	1.30

All (1) bond angle outliers are listed below:

Mol	Chain	Res	Type	Atoms	Z	Observed(°)	Ideal(°)
2	A	479	TYR	OXT-C-O	-2.75	117.85	124.08

There are no chirality outliers.

All (4) torsion outliers are listed below:

Mol	Chain	Res	Type	Atoms
2	A	479	TYR	O-C-CA-N
2	A	479	TYR	OXT-C-CA-N
2	A	479	TYR	O-C-CA-CB
2	A	479	TYR	OXT-C-CA-CB

There are no ring outliers.

1 monomer is involved in 1 short contact:

Mol	Chain	Res	Type	Clashes	Symm-Clashes
2	A	479	TYR	1	0

5.7 Other polymers [i](#)

There are no such residues in this entry.

5.8 Polymer linkage issues [i](#)

There are no chain breaks in this entry.

6 Fit of model and data

6.1 Protein, DNA and RNA chains

In the following table, the column labelled ‘#RSRZ > 2’ contains the number (and percentage) of RSRZ outliers, followed by percent RSRZ outliers for the chain as percentile scores relative to all X-ray entries and entries of similar resolution. The OWAB column contains the minimum, median, 95th percentile and maximum values of the occupancy-weighted average B-factor per residue. The column labelled ‘Q < 0.9’ lists the number of (and percentage) of residues with an average occupancy less than 0.9.

Mol	Chain	Analysed	<RSRZ>	#RSRZ>2	OWAB(Å ²)	Q<0.9
1	A	447/480 (93%)	-0.16	17 (3%) 44 46	12, 23, 62, 114	4 (0%)
1	B	450/480 (93%)	-0.34	10 (2%) 62 64	9, 21, 49, 106	14 (3%)
All	All	897/960 (93%)	-0.25	27 (3%) 52 55	9, 22, 56, 114	18 (2%)

All (27) RSRZ outliers are listed below:

Mol	Chain	Res	Type	RSRZ
1	B	357	VAL	4.7
1	A	236	ALA	4.7
1	A	374	VAL	4.4
1	B	359	CYS	4.2
1	A	47	TRP	4.1
1	A	255	VAL	3.9
1	B	47	TRP	3.9
1	B	8	GLY	3.7
1	B	255	VAL	3.7
1	A	7	ALA	3.4
1	B	254	THR	3.3
1	B	354	LEU	3.3
1	A	430	GLY	3.1
1	A	359	CYS	3.1
1	A	235	SER	3.0
1	B	239	THR	2.9
1	A	254	THR	2.8
1	A	122	ARG	2.8
1	A	355	ALA	2.7
1	B	220	HIS	2.7
1	A	354	LEU	2.7
1	B	353	ALA	2.6
1	A	431	THR	2.5
1	A	428	PRO	2.5

Continued on next page...

Continued from previous page...

Mol	Chain	Res	Type	RSRZ
1	A	356	SER	2.4
1	A	358	ARG	2.3
1	A	9	ILE	2.3

6.2 Non-standard residues in protein, DNA, RNA chains [i](#)

There are no non-standard protein/DNA/RNA residues in this entry.

6.3 Carbohydrates [i](#)

There are no monosaccharides in this entry.

6.4 Ligands [i](#)

In the following table, the Atoms column lists the number of modelled atoms in the group and the number defined in the chemical component dictionary. The B-factors column lists the minimum, median, 95th percentile and maximum values of B factors of atoms in the group. The column labelled 'Q< 0.9' lists the number of atoms with occupancy less than 0.9.

Mol	Type	Chain	Res	Atoms	RSCC	RSR	B-factors(Å ²)	Q<0.9
2	TYR	A	479	13/13	0.81	0.13	28,41,74,76	0
3	FMT	B	479	3/3	0.98	0.06	11,11,14,24	0

6.5 Other polymers [i](#)

There are no such residues in this entry.