



Full wwPDB X-ray Structure Validation Report ⓘ

May 13, 2020 – 04:58 am BST

PDB ID : 1MQB
Title : Crystal Structure of Ephrin A2 (ephA2) Receptor Protein Kinase
Authors : Nowakowski, J.; Cronin, C.N.; McRee, D.E.; Knuth, M.W.; Nelson, C.; Pavletich, N.; Rogers, J.; Sang, B.C.; Scheibe, D.N.; Swanson, R.V.; Thompson, D.A.
Deposited on : 2002-09-16
Resolution : 2.30 Å(reported)

This is a Full wwPDB X-ray Structure Validation Report for a publicly released PDB entry.

We welcome your comments at validation@mail.wwpdb.org

A user guide is available at

<https://www.wwpdb.org/validation/2017/XrayValidationReportHelp>

with specific help available everywhere you see the ⓘ symbol.

The following versions of software and data (see [references ⓘ](#)) were used in the production of this report:

MolProbity : 4.02b-467
Mogul : 1.8.5 (274361), CSD as541be (2020)
Xtriage (Phenix) : **NOT EXECUTED**
EDS : **NOT EXECUTED**
buster-report : 1.1.7 (2018)
Percentile statistics : 20191225.v01 (using entries in the PDB archive December 25th 2019)
Ideal geometry (proteins) : Engh & Huber (2001)
Ideal geometry (DNA, RNA) : Parkinson et al. (1996)
Validation Pipeline (wwPDB-VP) : 2.11

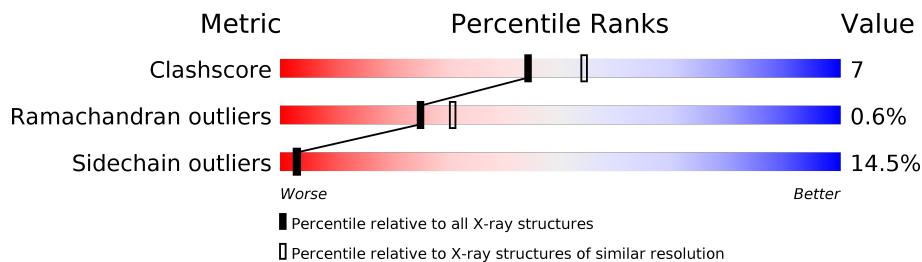
1 Overall quality at a glance

The following experimental techniques were used to determine the structure:

X-RAY DIFFRACTION

The reported resolution of this entry is 2.30 Å.

Percentile scores (ranging between 0-100) for global validation metrics of the entry are shown in the following graphic. The table shows the number of entries on which the scores are based.



Metric	Whole archive (#Entries)	Similar resolution (#Entries, resolution range(Å))
Clashscore	141614	5643 (2.30-2.30)
Ramachandran outliers	138981	5575 (2.30-2.30)
Sidechain outliers	138945	5575 (2.30-2.30)

The table below summarises the geometric issues observed across the polymeric chains and their fit to the electron density. The red, orange, yellow and green segments on the lower bar indicate the fraction of residues that contain outliers for ≥ 3 , 2, 1 and 0 types of geometric quality criteria respectively. A grey segment represents the fraction of residues that are not modelled. The numeric value for each fraction is indicated below the corresponding segment, with a dot representing fractions $\leq 5\%$

Note EDS was not executed.

Mol	Chain	Length	Quality of chain
1	A	333	
1	B	333	

2 Entry composition [i](#)

There are 3 unique types of molecules in this entry. The entry contains 4349 atoms, of which 0 are hydrogens and 0 are deuteriums.

In the tables below, the ZeroOcc column contains the number of atoms modelled with zero occupancy, the AltConf column contains the number of residues with at least one atom in alternate conformation and the Trace column contains the number of residues modelled with at most 2 atoms.

- Molecule 1 is a protein called Ephrin type-A receptor 2.

Mol	Chain	Residues	Atoms					ZeroOcc	AltConf	Trace
			Total	C	N	O	S			
1	A	263	2101	1349	360	374	18	0	0	0
1	B	265	2120	1362	365	375	18	0	0	0

There are 56 discrepancies between the modelled and reference sequences:

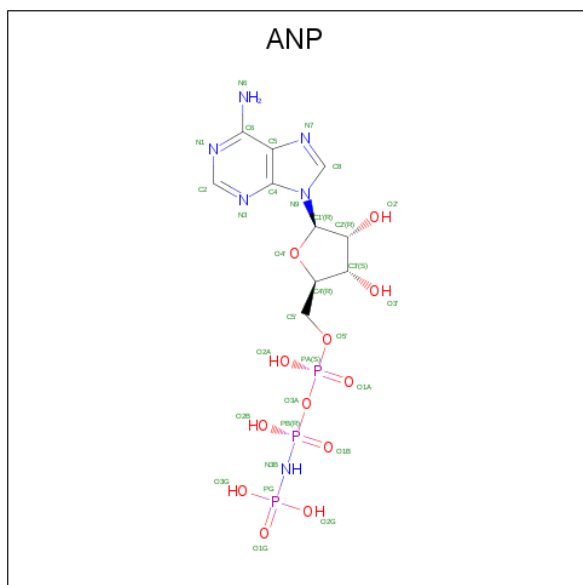
Chain	Residue	Modelled	Actual	Comment	Reference
A	568	MET	-	CLONING ARTIFACT	UNP P29317
A	569	SER	-	CLONING ARTIFACT	UNP P29317
A	570	TYR	-	CLONING ARTIFACT	UNP P29317
A	571	TYR	-	CLONING ARTIFACT	UNP P29317
A	572	HIS	-	CLONING ARTIFACT	UNP P29317
A	573	HIS	-	CLONING ARTIFACT	UNP P29317
A	574	HIS	-	CLONING ARTIFACT	UNP P29317
A	575	HIS	-	CLONING ARTIFACT	UNP P29317
A	576	HIS	-	CLONING ARTIFACT	UNP P29317
A	577	HIS	-	CLONING ARTIFACT	UNP P29317
A	578	ASP	-	CLONING ARTIFACT	UNP P29317
A	579	TYR	-	CLONING ARTIFACT	UNP P29317
A	580	ASP	-	CLONING ARTIFACT	UNP P29317
A	581	ILE	-	CLONING ARTIFACT	UNP P29317
A	582	PRO	-	CLONING ARTIFACT	UNP P29317
A	583	THR	-	CLONING ARTIFACT	UNP P29317
A	584	THR	-	CLONING ARTIFACT	UNP P29317
A	585	GLU	-	CLONING ARTIFACT	UNP P29317
A	586	ASN	-	CLONING ARTIFACT	UNP P29317
A	587	LEU	-	CLONING ARTIFACT	UNP P29317
A	588	TYR	-	CLONING ARTIFACT	UNP P29317
A	589	PHE	-	CLONING ARTIFACT	UNP P29317
A	590	GLN	-	CLONING ARTIFACT	UNP P29317
A	591	GLY	-	CLONING ARTIFACT	UNP P29317
A	592	ALA	-	CLONING ARTIFACT	UNP P29317

Continued on next page...

Continued from previous page...

Chain	Residue	Modelled	Actual	Comment	Reference
A	593	MET	-	CLONING ARTIFACT	UNP P29317
A	594	GLY	-	CLONING ARTIFACT	UNP P29317
A	595	SER	-	CLONING ARTIFACT	UNP P29317
B	568	MET	-	CLONING ARTIFACT	UNP P29317
B	569	SER	-	CLONING ARTIFACT	UNP P29317
B	570	TYR	-	CLONING ARTIFACT	UNP P29317
B	571	TYR	-	CLONING ARTIFACT	UNP P29317
B	572	HIS	-	CLONING ARTIFACT	UNP P29317
B	573	HIS	-	CLONING ARTIFACT	UNP P29317
B	574	HIS	-	CLONING ARTIFACT	UNP P29317
B	575	HIS	-	CLONING ARTIFACT	UNP P29317
B	576	HIS	-	CLONING ARTIFACT	UNP P29317
B	577	HIS	-	CLONING ARTIFACT	UNP P29317
B	578	ASP	-	CLONING ARTIFACT	UNP P29317
B	579	TYR	-	CLONING ARTIFACT	UNP P29317
B	580	ASP	-	CLONING ARTIFACT	UNP P29317
B	581	ILE	-	CLONING ARTIFACT	UNP P29317
B	582	PRO	-	CLONING ARTIFACT	UNP P29317
B	583	THR	-	CLONING ARTIFACT	UNP P29317
B	584	THR	-	CLONING ARTIFACT	UNP P29317
B	585	GLU	-	CLONING ARTIFACT	UNP P29317
B	586	ASN	-	CLONING ARTIFACT	UNP P29317
B	587	LEU	-	CLONING ARTIFACT	UNP P29317
B	588	TYR	-	CLONING ARTIFACT	UNP P29317
B	589	PHE	-	CLONING ARTIFACT	UNP P29317
B	590	GLN	-	CLONING ARTIFACT	UNP P29317
B	591	GLY	-	CLONING ARTIFACT	UNP P29317
B	592	ALA	-	CLONING ARTIFACT	UNP P29317
B	593	MET	-	CLONING ARTIFACT	UNP P29317
B	594	GLY	-	CLONING ARTIFACT	UNP P29317
B	595	SER	-	CLONING ARTIFACT	UNP P29317

- Molecule 2 is PHOSPHOAMINOPHOSPHONIC ACID-ADENYLATE ESTER (three-letter code: ANP) (formula: C₁₀H₁₇N₆O₁₂P₃).



Mol	Chain	Residues	Atoms					ZeroOcc	AltConf
			Total	C	N	O	P		
2	A	1	31	10	6	12	3	0	0
2	B	1	31	10	6	12	3	0	0

- Molecule 3 is water.

Mol	Chain	Residues	Atoms		ZeroOcc	AltConf
			Total	O		
3	A	39	39	39	0	0
3	B	27	27	27	0	0

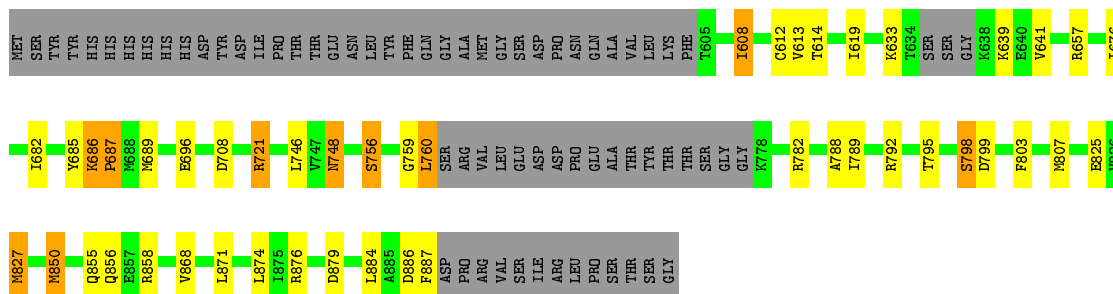
3 Residue-property plots [i](#)

These plots are drawn for all protein, RNA and DNA chains in the entry. The first graphic for a chain summarises the proportions of the various outlier classes displayed in the second graphic. The second graphic shows the sequence view annotated by issues in geometry. Residues are color-coded according to the number of geometric quality criteria for which they contain at least one outlier: green = 0, yellow = 1, orange = 2 and red = 3 or more. Stretches of 2 or more consecutive residues without any outlier are shown as a green connector. Residues present in the sample, but not in the model, are shown in grey.

Note EDS was not executed.

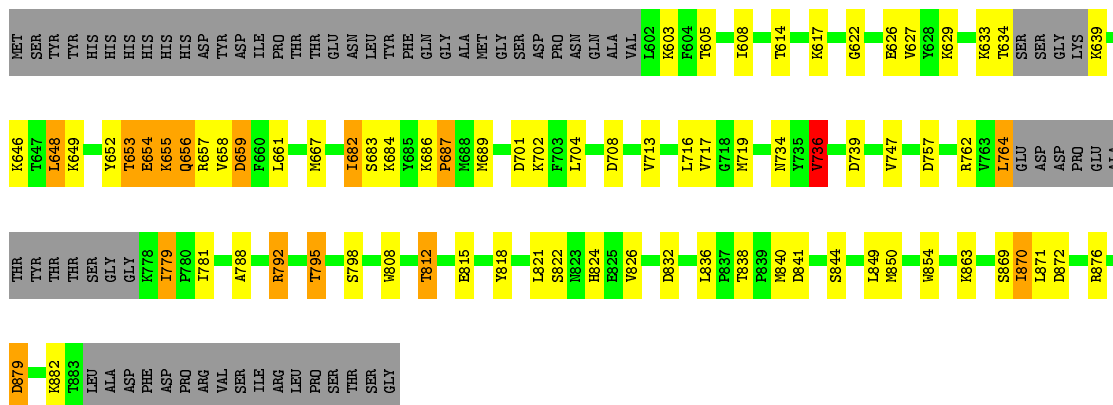
- Molecule 1: Ephrin type-A receptor 2

Chain A: 



- Molecule 1: Ephrin type-A receptor 2

Chain B: 



4 Data and refinement statistics

Xtrriage (Phenix) and EDS were not executed - this section is therefore incomplete.

Property	Value	Source
Space group	P 3 2 1	Depositor
Cell constants a, b, c, α , β , γ	72.13Å 72.13Å 241.62Å 90.00° 90.00° 120.00°	Depositor
Resolution (Å)	40.00 – 2.30	Depositor
% Data completeness (in resolution range)	93.7 (40.00-2.30)	Depositor
R_{merge}	0.06	Depositor
R_{sym}	0.06	Depositor
Refinement program	REFMAC 5.1.19	Depositor
R, R_{free}	0.236 , 0.288	Depositor
Estimated twinning fraction	No twinning to report.	Xtrriage
Total number of atoms	4349	wwPDB-VP
Average B, all atoms (Å ²)	47.0	wwPDB-VP

5 Model quality [i](#)

5.1 Standard geometry [i](#)

Bond lengths and bond angles in the following residue types are not validated in this section: ANP

The Z score for a bond length (or angle) is the number of standard deviations the observed value is removed from the expected value. A bond length (or angle) with $|Z| > 5$ is considered an outlier worth inspection. RMSZ is the root-mean-square of all Z scores of the bond lengths (or angles).

Mol	Chain	Bond lengths		Bond angles	
		RMSZ	# Z >5	RMSZ	# Z >5
1	A	0.78	0/2145	0.89	5/2888 (0.2%)
1	B	0.78	0/2164	0.94	12/2913 (0.4%)
All	All	0.78	0/4309	0.92	17/5801 (0.3%)

Chiral center outliers are detected by calculating the chiral volume of a chiral center and verifying if the center is modelled as a planar moiety or with the opposite hand. A planarity outlier is detected by checking planarity of atoms in a peptide group, atoms in a mainchain group or atoms of a sidechain that are expected to be planar.

Mol	Chain	#Chirality outliers	#Planarity outliers
1	A	0	1
1	B	0	2
All	All	0	3

There are no bond length outliers.

All (17) bond angle outliers are listed below:

Mol	Chain	Res	Type	Atoms	Z	Observed(°)	Ideal(°)
1	B	708	ASP	CB-CG-OD2	8.65	126.09	118.30
1	B	757	ASP	CB-CG-OD2	7.21	124.78	118.30
1	B	687	PRO	N-CD-CG	-6.79	93.02	103.20
1	A	657	ARG	NE-CZ-NH2	-6.15	117.23	120.30
1	B	687	PRO	N-CA-CB	-6.04	95.96	102.60
1	B	832	ASP	CB-CG-OD2	5.94	123.65	118.30
1	A	687	PRO	N-CD-CG	-5.68	94.67	103.20
1	B	872	ASP	CB-CG-OD2	5.65	123.38	118.30
1	B	659	ASP	CB-CG-OD2	5.60	123.34	118.30
1	A	879	ASP	CB-CG-OD2	5.36	123.12	118.30
1	B	879	ASP	CB-CG-OD2	5.26	123.04	118.30
1	B	736	VAL	CB-CA-C	-5.25	101.42	111.40

Continued on next page...

Continued from previous page...

Mol	Chain	Res	Type	Atoms	Z	Observed(°)	Ideal(°)
1	B	739	ASP	CB-CG-OD2	5.22	123.00	118.30
1	A	799	ASP	CB-CG-OD1	5.21	122.99	118.30
1	B	841	ASP	CB-CG-OD2	5.13	122.92	118.30
1	A	708	ASP	CB-CG-OD2	5.10	122.89	118.30
1	B	701	ASP	CB-CG-OD1	5.05	122.84	118.30

There are no chirality outliers.

All (3) planarity outliers are listed below:

Mol	Chain	Res	Type	Group
1	A	686	LYS	Peptide
1	B	654	GLU	Peptide
1	B	686	LYS	Peptide

5.2 Too-close contacts [\(i\)](#)

In the following table, the Non-H and H(model) columns list the number of non-hydrogen atoms and hydrogen atoms in the chain respectively. The H(added) column lists the number of hydrogen atoms added and optimized by MolProbity. The Clashes column lists the number of clashes within the asymmetric unit, whereas Symm-Clashes lists symmetry related clashes.

Mol	Chain	Non-H	H(model)	H(added)	Clashes	Symm-Clashes
1	A	2101	0	2133	26	0
1	B	2120	0	2162	30	0
2	A	31	0	13	1	0
2	B	31	0	13	2	0
3	A	39	0	0	0	0
3	B	27	0	0	0	0
All	All	4349	0	4321	57	0

The all-atom clashscore is defined as the number of clashes found per 1000 atoms (including hydrogen atoms). The all-atom clashscore for this structure is 7.

All (57) close contacts within the same asymmetric unit are listed below, sorted by their clash magnitude.

Atom-1	Atom-2	Interatomic distance (Å)	Clash overlap (Å)
1:A:807:MET:HE2	1:A:850:MET:HB3	1.40	0.98
1:A:807:MET:HE2	1:A:850:MET:CB	2.06	0.84
1:A:748:ASN:HD22	1:A:748:ASN:C	1.86	0.76

Continued on next page...

Continued from previous page...

Atom-1	Atom-2	Interatomic distance (Å)	Clash overlap (Å)
1:B:795:THR:HG22	1:B:798:SER:H	1.51	0.75
1:B:808:TRP:O	1:B:812:THR:HB	1.93	0.68
1:B:849:LEU:HD22	1:B:870:ILE:CD1	2.25	0.65
1:A:807:MET:CE	1:A:850:MET:CB	2.74	0.64
1:B:812:THR:CG2	1:B:815:GLU:HB3	2.28	0.64
1:B:655:LYS:O	1:B:658:VAL:HG22	1.99	0.63
1:B:608:ILE:O	1:B:682:ILE:CG2	2.50	0.59
1:A:807:MET:HE1	1:A:850:MET:N	2.17	0.59
1:A:676:ILE:HD13	1:A:756:SER:CB	2.33	0.57
1:A:807:MET:CE	1:A:850:MET:HB3	2.24	0.57
1:B:608:ILE:O	1:B:682:ILE:HG23	2.05	0.56
1:A:608:ILE:HD11	1:A:613:VAL:HG23	1.87	0.56
1:A:807:MET:HE2	1:A:850:MET:CA	2.36	0.56
1:B:812:THR:HG21	1:B:815:GLU:HB3	1.88	0.55
1:A:788:ALA:O	1:A:792:ARG:HA	2.06	0.55
1:B:736:VAL:HG22	1:B:764:LEU:HG	1.89	0.55
1:B:812:THR:HG23	1:B:815:GLU:CB	2.37	0.55
1:A:803:PHE:O	1:A:807:MET:HG3	2.08	0.54
1:B:648:LEU:HD13	1:B:652:TYR:CD1	2.43	0.53
1:A:807:MET:CE	1:A:850:MET:CA	2.86	0.53
1:B:713:VAL:O	1:B:717:VAL:HG23	2.08	0.52
1:B:812:THR:HG23	1:B:815:GLU:HB3	1.91	0.52
1:B:653:THR:OG1	1:B:656:GLN:HG2	2.10	0.52
1:A:608:ILE:HD11	1:A:613:VAL:CG2	2.40	0.51
1:A:760:LEU:N	1:A:760:LEU:HD22	2.27	0.50
1:A:795:THR:H	1:A:798:SER:HB2	1.77	0.50
1:B:822:SER:O	1:B:826:VAL:HG23	2.14	0.48
1:A:748:ASN:ND2	1:A:748:ASN:C	2.61	0.48
1:A:682:ILE:HD12	1:A:689:MET:CE	2.45	0.47
1:A:612:CYS:HB3	1:A:633:LYS:O	2.14	0.46
1:B:683:SER:O	1:B:684:LYS:HB2	2.15	0.46
1:A:789:ILE:HG21	1:A:827:MET:CE	2.46	0.46
1:B:850:MET:HG2	1:B:854:TRP:CH2	2.51	0.45
1:A:807:MET:HE2	1:A:850:MET:HA	1.98	0.45
1:B:779:ILE:HG22	1:B:781:ILE:HD12	1.98	0.45
1:B:788:ALA:O	1:B:792:ARG:HA	2.15	0.45
1:A:721:ARG:HH11	1:A:868:VAL:HG13	1.81	0.45
1:A:759:GLY:HA2	1:A:760:LEU:HD22	1.98	0.45
1:B:818:TYR:CD1	1:B:836:LEU:HD21	2.52	0.44
1:B:704:LEU:HD21	1:B:719:MET:HE1	2.01	0.43
1:B:622:GLY:HA2	2:B:1001:ANP:O1B	2.18	0.43

Continued on next page...

Continued from previous page...

Atom-1	Atom-2	Interatomic distance (Å)	Clash overlap (Å)
1:B:716:LEU:HA	1:B:719:MET:HE2	2.01	0.43
1:B:627:VAL:HG21	2:B:1001:ANP:H5'1	2.01	0.42
1:A:676:ILE:HD13	1:A:756:SER:HB2	2.01	0.42
1:A:682:ILE:HD12	1:A:689:MET:HE3	2.02	0.41
1:A:676:ILE:HD13	1:A:756:SER:CA	2.50	0.41
1:B:656:GLN:HA	1:B:656:GLN:OE1	2.20	0.41
1:B:646:LYS:O	1:B:689:MET:HA	2.21	0.41
1:B:658:VAL:HG23	1:B:659:ASP:N	2.36	0.41
1:B:717:VAL:HG13	1:B:871:LEU:HD22	2.02	0.41
1:B:716:LEU:HD23	1:B:719:MET:HE1	2.02	0.41
2:A:1000:ANP:O5'	2:A:1000:ANP:H8	2.20	0.40
1:B:795:THR:O	1:B:798:SER:HB3	2.20	0.40
1:A:788:ALA:HB2	1:A:798:SER:OG	2.21	0.40

There are no symmetry-related clashes.

5.3 Torsion angles [i](#)

5.3.1 Protein backbone [i](#)

In the following table, the Percentiles column shows the percent Ramachandran outliers of the chain as a percentile score with respect to all X-ray entries followed by that with respect to entries of similar resolution.

The Analysed column shows the number of residues for which the backbone conformation was analysed, and the total number of residues.

Mol	Chain	Analysed	Favoured	Allowed	Outliers	Percentiles	
1	A	257/333 (77%)	248 (96%)	8 (3%)	1 (0%)	34	42
1	B	259/333 (78%)	244 (94%)	13 (5%)	2 (1%)	19	23
All	All	516/666 (78%)	492 (95%)	21 (4%)	3 (1%)	25	31

All (3) Ramachandran outliers are listed below:

Mol	Chain	Res	Type
1	A	687	PRO
1	B	687	PRO
1	B	653	THR

5.3.2 Protein sidechains [i](#)

In the following table, the Percentiles column shows the percent sidechain outliers of the chain as a percentile score with respect to all X-ray entries followed by that with respect to entries of similar resolution.

The Analysed column shows the number of residues for which the sidechain conformation was analysed, and the total number of residues.

Mol	Chain	Analysed	Rotameric	Outliers	Percentiles	
1	A	226/287 (79%)	199 (88%)	27 (12%)	5	5
1	B	229/287 (80%)	190 (83%)	39 (17%)	2	2
All	All	455/574 (79%)	389 (86%)	66 (14%)	3	3

All (66) residues with a non-rotameric sidechain are listed below:

Mol	Chain	Res	Type
1	A	608	ILE
1	A	614	THR
1	A	619	ILE
1	A	639	LYS
1	A	641	VAL
1	A	685	TYR
1	A	686	LYS
1	A	696	GLU
1	A	721	ARG
1	A	746	LEU
1	A	748	ASN
1	A	756	SER
1	A	760	LEU
1	A	782	ARG
1	A	798	SER
1	A	825	GLU
1	A	827	MET
1	A	850	MET
1	A	855	GLN
1	A	856	GLN
1	A	858	ARG
1	A	871	LEU
1	A	874	LEU
1	A	876	ARG
1	A	884	LEU
1	A	886	ASP
1	A	887	PHE

Continued on next page...

Continued from previous page...

Mol	Chain	Res	Type
1	B	603	LYS
1	B	605	THR
1	B	614	THR
1	B	617	LYS
1	B	626	GLU
1	B	629	LYS
1	B	633	LYS
1	B	634	THR
1	B	639	LYS
1	B	648	LEU
1	B	649	LYS
1	B	654	GLU
1	B	655	LYS
1	B	656	GLN
1	B	657	ARG
1	B	661	LEU
1	B	667	MET
1	B	682	ILE
1	B	702	LYS
1	B	734	ASN
1	B	736	VAL
1	B	747	VAL
1	B	762	ARG
1	B	764	LEU
1	B	779	ILE
1	B	792	ARG
1	B	795	THR
1	B	812	THR
1	B	821	LEU
1	B	824	HIS
1	B	838	THR
1	B	840	MET
1	B	844	SER
1	B	863	LYS
1	B	869	SER
1	B	870	ILE
1	B	876	ARG
1	B	879	ASP
1	B	882	LYS

Some sidechains can be flipped to improve hydrogen bonding and reduce clashes. All (6) such sidechains are listed below:

Mol	Chain	Res	Type
1	A	609	HIS
1	A	674	ASN
1	A	732	ASN
1	A	748	ASN
1	B	674	ASN
1	B	852	GLN

5.3.3 RNA [i](#)

There are no RNA molecules in this entry.

5.4 Non-standard residues in protein, DNA, RNA chains [i](#)

There are no non-standard protein/DNA/RNA residues in this entry.

5.5 Carbohydrates [i](#)

There are no carbohydrates in this entry.

5.6 Ligand geometry [i](#)

2 ligands are modelled in this entry.

In the following table, the Counts columns list the number of bonds (or angles) for which Mogul statistics could be retrieved, the number of bonds (or angles) that are observed in the model and the number of bonds (or angles) that are defined in the Chemical Component Dictionary. The Link column lists molecule types, if any, to which the group is linked. The Z score for a bond length (or angle) is the number of standard deviations the observed value is removed from the expected value. A bond length (or angle) with $|Z| > 2$ is considered an outlier worth inspection. RMSZ is the root-mean-square of all Z scores of the bond lengths (or angles).

Mol	Type	Chain	Res	Link	Bond lengths			Bond angles		
					Counts	RMSZ	# $ Z > 2$	Counts	RMSZ	# $ Z > 2$
2	ANP	A	1000	-	29,33,33	1.38	4 (13%)	31,52,52	1.79	7 (22%)
2	ANP	B	1001	-	29,33,33	1.38	4 (13%)	31,52,52	1.58	5 (16%)

In the following table, the Chirals column lists the number of chiral outliers, the number of chiral centers analysed, the number of these observed in the model and the number defined in the Chemical Component Dictionary. Similar counts are reported in the Torsion and Rings columns. '-' means no outliers of that kind were identified.

Mol	Type	Chain	Res	Link	Chirals	Torsions	Rings
2	ANP	A	1000	-	-	6/14/38/38	0/3/3/3
2	ANP	B	1001	-	-	7/14/38/38	0/3/3/3

All (8) bond length outliers are listed below:

Mol	Chain	Res	Type	Atoms	Z	Observed(Å)	Ideal(Å)
2	A	1000	ANP	PB-O3A	4.62	1.64	1.59
2	B	1001	ANP	PB-O3A	3.74	1.63	1.59
2	B	1001	ANP	C2-N3	3.49	1.37	1.32
2	A	1000	ANP	C2-N3	3.10	1.37	1.32
2	B	1001	ANP	PG-O1G	2.40	1.50	1.46
2	B	1001	ANP	C2-N1	2.39	1.38	1.33
2	A	1000	ANP	C2-N1	2.18	1.38	1.33
2	A	1000	ANP	PB-O1B	2.11	1.49	1.46

All (12) bond angle outliers are listed below:

Mol	Chain	Res	Type	Atoms	Z	Observed(°)	Ideal(°)
2	A	1000	ANP	N3-C2-N1	-6.38	118.70	128.68
2	B	1001	ANP	N3-C2-N1	-5.66	119.84	128.68
2	A	1000	ANP	O1B-PB-N3B	-4.18	105.62	111.77
2	B	1001	ANP	C2-N1-C6	2.60	123.19	118.75
2	A	1000	ANP	C4-C5-N7	-2.59	106.70	109.40
2	B	1001	ANP	C5-C6-N6	2.50	124.16	120.35
2	B	1001	ANP	C4-C5-N7	-2.39	106.91	109.40
2	A	1000	ANP	C5-C6-N6	2.31	123.86	120.35
2	A	1000	ANP	C1'-N9-C4	-2.22	122.73	126.64
2	A	1000	ANP	PA-O3A-PB	-2.07	125.33	132.62
2	B	1001	ANP	O1B-PB-N3B	-2.04	108.76	111.77
2	A	1000	ANP	C2-N1-C6	2.04	122.25	118.75

There are no chirality outliers.

All (13) torsion outliers are listed below:

Mol	Chain	Res	Type	Atoms
2	A	1000	ANP	PB-N3B-PG-O1G
2	A	1000	ANP	PA-O3A-PB-O1B
2	A	1000	ANP	PA-O3A-PB-O2B
2	A	1000	ANP	C5'-O5'-PA-O1A
2	A	1000	ANP	C5'-O5'-PA-O3A
2	B	1001	ANP	PG-N3B-PB-O1B
2	B	1001	ANP	PA-O3A-PB-O1B

Continued on next page...

Continued from previous page...

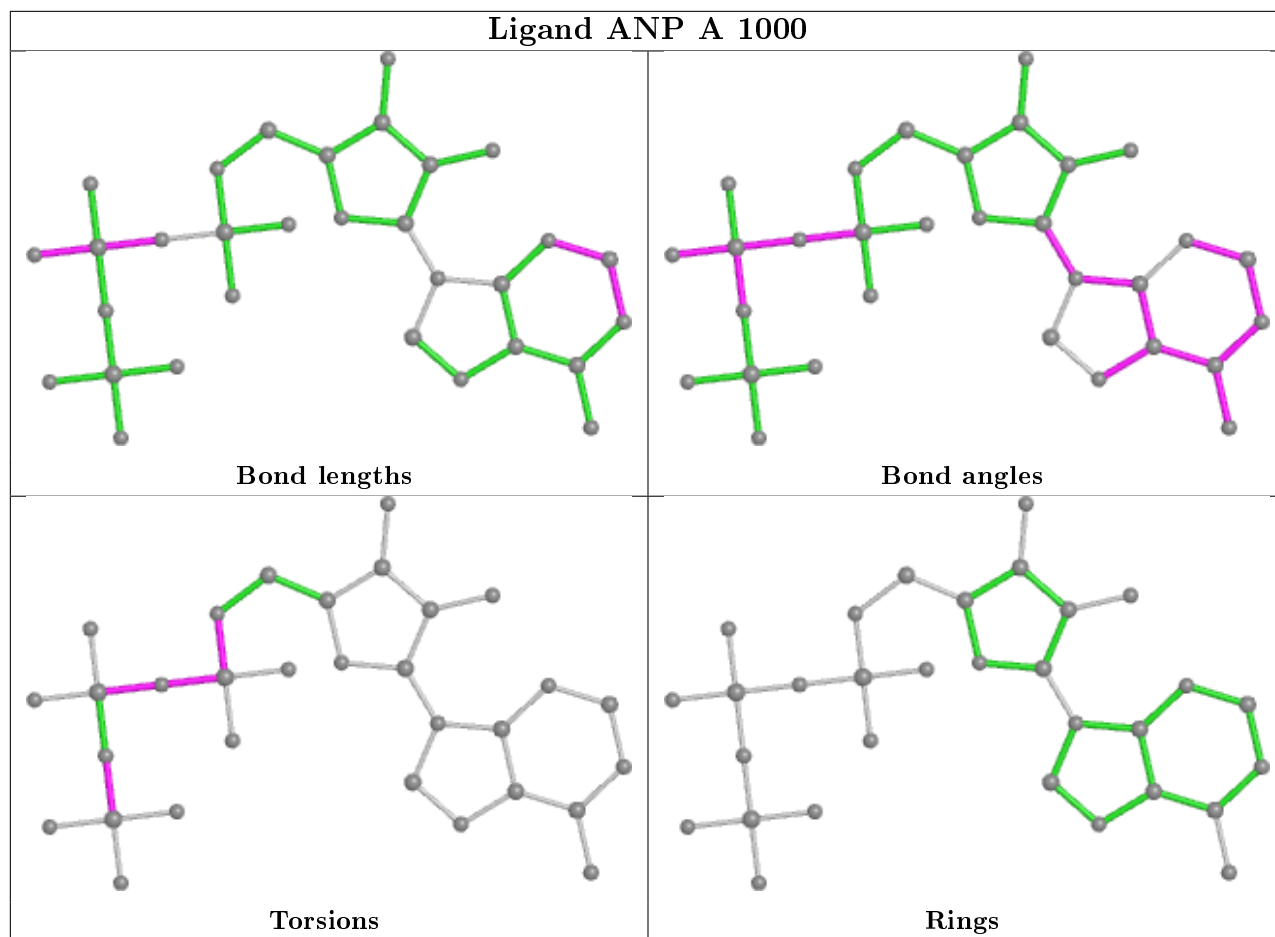
Mol	Chain	Res	Type	Atoms
2	B	1001	ANP	O4'-C4'-C5'-O5'
2	B	1001	ANP	C3'-C4'-C5'-O5'
2	B	1001	ANP	PB-O3A-PA-O1A
2	A	1000	ANP	PB-O3A-PA-O2A
2	B	1001	ANP	PB-O3A-PA-O2A
2	B	1001	ANP	C5'-O5'-PA-O1A

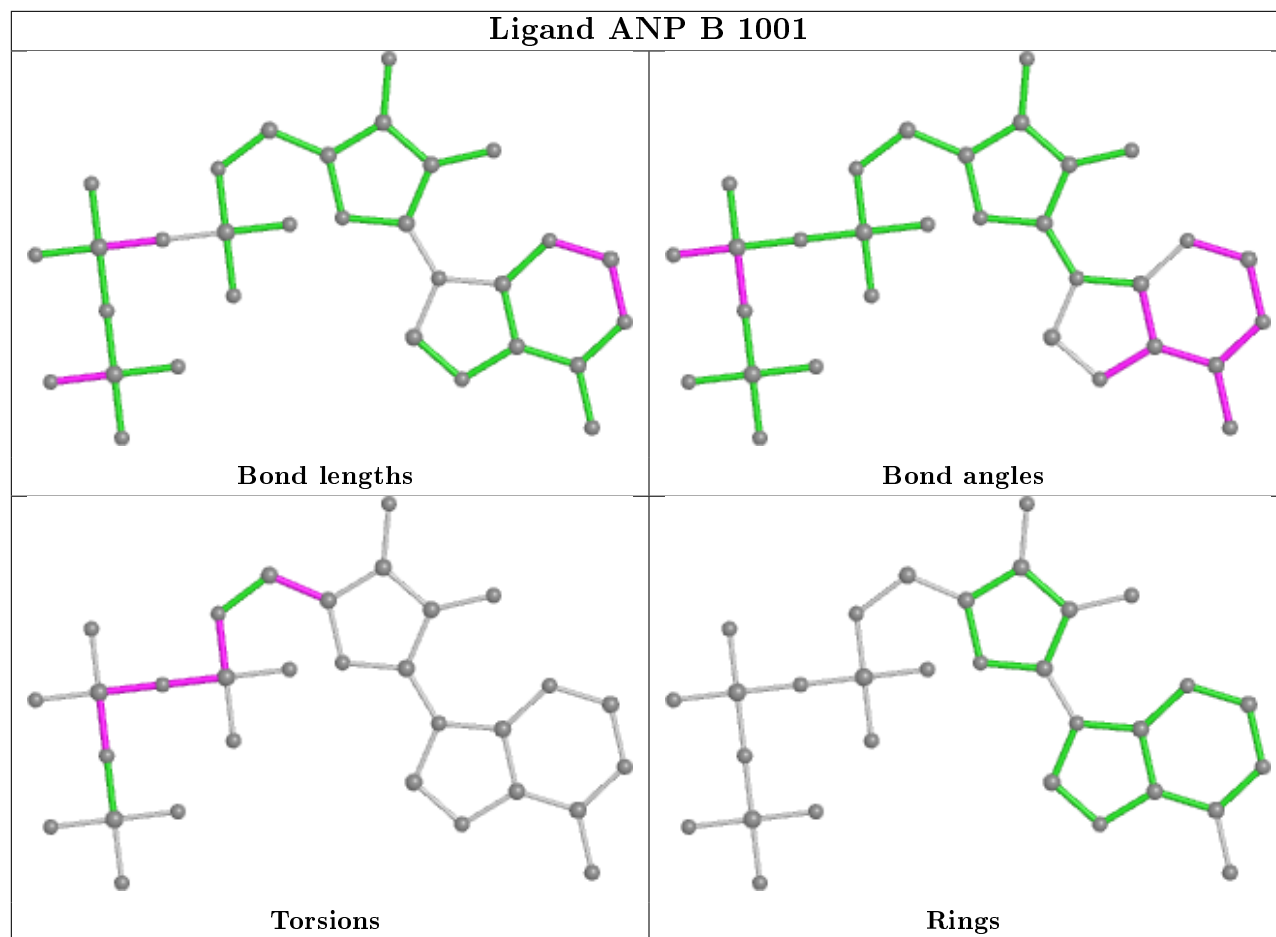
There are no ring outliers.

2 monomers are involved in 3 short contacts:

Mol	Chain	Res	Type	Clashes	Symm-Clashes
2	A	1000	ANP	1	0
2	B	1001	ANP	2	0

The following is a two-dimensional graphical depiction of Mogul quality analysis of bond lengths, bond angles, torsion angles, and ring geometry for all instances of the Ligand of Interest. In addition, ligands with molecular weight > 250 and outliers as shown on the validation Tables will also be included. For torsion angles, if less than 5% of the Mogul distribution of torsion angles is within 10 degrees of the torsion angle in question, then that torsion angle is considered an outlier. Any bond that is central to one or more torsion angles identified as an outlier by Mogul will be highlighted in the graph. For rings, the root-mean-square deviation (RMSD) between the ring in question and similar rings identified by Mogul is calculated over all ring torsion angles. If the average RMSD is greater than 60 degrees and the minimal RMSD between the ring in question and any Mogul-identified rings is also greater than 60 degrees, then that ring is considered an outlier. The outliers are highlighted in purple. The color gray indicates Mogul did not find sufficient equivalents in the CSD to analyse the geometry.





5.7 Other polymers [i](#)

There are no such residues in this entry.

5.8 Polymer linkage issues [i](#)

There are no chain breaks in this entry.

6 Fit of model and data

6.1 Protein, DNA and RNA chains

EDS was not executed - this section is therefore empty.

6.2 Non-standard residues in protein, DNA, RNA chains

EDS was not executed - this section is therefore empty.

6.3 Carbohydrates

EDS was not executed - this section is therefore empty.

6.4 Ligands

EDS was not executed - this section is therefore empty.

6.5 Other polymers

EDS was not executed - this section is therefore empty.