



Full wwPDB X-ray Structure Validation Report ⓘ

Jan 8, 2019 – 02:36 PM EST

PDB ID : 6MTJ
Title : Crystal Structure of HIV-1 BG505 SOSIP.664 Prefusion Env Trimer Bound to Small Molecule HIV-1 Entry Inhibitor BMS-378806 in Complex with Human Antibodies 3H109L and 35O22 at 2.9 Angstrom
Authors : Lai, Y.-T.; Kwong, P.D.
Deposited on : 2018-10-19
Resolution : 2.34 Å(reported)

This is a Full wwPDB X-ray Structure Validation Report for a publicly released PDB entry.

We welcome your comments at validation@mail.wwpdb.org

A user guide is available at

<https://www.wwpdb.org/validation/2017/XrayValidationReportHelp>

with specific help available everywhere you see the ⓘ symbol.

The following versions of software and data (see [references ⓘ](#)) were used in the production of this report:

MolProbity : 4.02b-467
Mogul : 1.7.3 (157068), CSD as539be (2018)
Xtrriage (Phenix) : 1.13
EDS : rb-20031633
Percentile statistics : 20171227.v01 (using entries in the PDB archive December 27th 2017)
Refmac : 5.8.0158
CCP4 : 7.0 (Gargrove)
Ideal geometry (proteins) : Engh & Huber (2001)
Ideal geometry (DNA, RNA) : Parkinson et al. (1996)
Validation Pipeline (wwPDB-VP) : rb-20031633

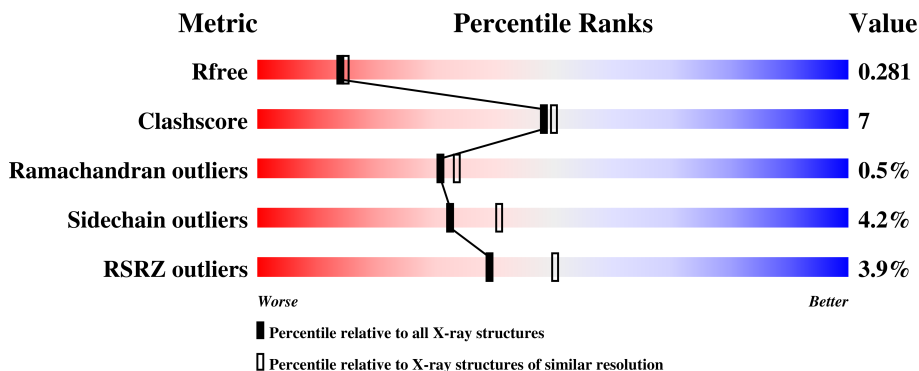
1 Overall quality at a glance

The following experimental techniques were used to determine the structure:

X-RAY DIFFRACTION

The reported resolution of this entry is 2.34 Å.

Percentile scores (ranging between 0-100) for global validation metrics of the entry are shown in the following graphic. The table shows the number of entries on which the scores are based.



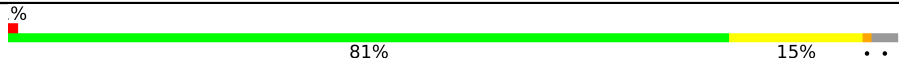
Metric	Whole archive (#Entries)	Similar resolution (#Entries, resolution range(Å))
R_{free}	111664	1763 (2.36-2.32)
Clashscore	122126	1858 (2.36-2.32)
Ramachandran outliers	120053	1834 (2.36-2.32)
Sidechain outliers	120020	1835 (2.36-2.32)
RSRZ outliers	108989	1737 (2.36-2.32)

The table below summarises the geometric issues observed across the polymeric chains and their fit to the electron density. The red, orange, yellow and green segments on the lower bar indicate the fraction of residues that contain outliers for ≥ 3 , 2, 1 and 0 types of geometric quality criteria. A grey segment represents the fraction of residues that are not modelled. The numeric value for each fraction is indicated below the corresponding segment, with a dot representing fractions $\leq 5\%$. The upper red bar (where present) indicates the fraction of residues that have poor fit to the electron density. The numeric value is given above the bar.

Mol	Chain	Length	Quality of chain
1	B	153	 3% 79% 7% • 13%
2	D	134	 10% 70% 25% •
3	E	114	 6% 79% 12% • 8%
4	G	481	 3% 71% 19% • 9%
5	H	244	 3% 72% 19% • 7%

Continued on next page...

Continued from previous page...

Mol	Chain	Length	Quality of chain
6	L	217	 <p>A horizontal bar chart representing the quality of chain. The bar is divided into segments: a small red segment at the start, followed by a large green segment labeled '81%', then a yellow segment labeled '15%', and finally a small grey segment at the end. A '%' symbol is positioned above the bar on the left, and two dots are positioned below the bar on the right.</p>

2 Entry composition i

There are 11 unique types of molecules in this entry. The entry contains 10263 atoms, of which 0 are hydrogens and 0 are deuteriums.

In the tables below, the ZeroOcc column contains the number of atoms modelled with zero occupancy, the AltConf column contains the number of residues with at least one atom in alternate conformation and the Trace column contains the number of residues modelled with at most 2 atoms.

- Molecule 1 is a protein called Envelope glycoprotein gp160.

Mol	Chain	Residues	Atoms					ZeroOcc	AltConf	Trace
			Total	C	N	O	S			
1	B	133	1056	673	182	195	6	0	0	0

There are 2 discrepancies between the modelled and reference sequences:

Chain	Residue	Modelled	Actual	Comment	Reference
B	559	PRO	ILE	engineered mutation	UNP Q2N0S6
B	605	CYS	THR	engineered mutation	UNP Q2N0S6

- Molecule 2 is a protein called 35O22 scFv heavy chain portion.

Mol	Chain	Residues	Atoms					ZeroOcc	AltConf	Trace
			Total	C	N	O	S			
2	D	128	994	628	169	192	5	0	0	0

- Molecule 3 is a protein called 35O22 scFv light chain portion.

Mol	Chain	Residues	Atoms					ZeroOcc	AltConf	Trace
			Total	C	N	O	S			
3	E	105	805	506	133	160	6	0	0	0

- Molecule 4 is a protein called Envelope glycoprotein gp160.

Mol	Chain	Residues	Atoms					ZeroOcc	AltConf	Trace
			Total	C	N	O	S			
4	G	440	3465	2177	614	646	28	0	0	0

There are 8 discrepancies between the modelled and reference sequences:

Chain	Residue	Modelled	Actual	Comment	Reference
G	137	ALA	ASN	engineered mutation	UNP Q2N0S6
G	332	ASN	THR	conflict	UNP Q2N0S6

Continued on next page...

Continued from previous page...

Chain	Residue	Modelled	Actual	Comment	Reference
G	501	CYS	ALA	conflict	UNP Q2N0S6
G	509	ARG	-	expression tag	UNP Q2N0S6
G	510	ARG	-	expression tag	UNP Q2N0S6
G	511	ARG	-	expression tag	UNP Q2N0S6
G	512	ARG	-	expression tag	UNP Q2N0S6
G	513	ARG	-	expression tag	UNP Q2N0S6

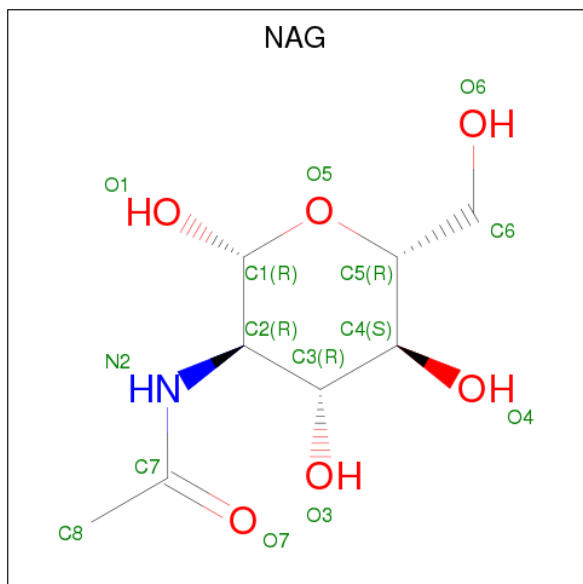
- Molecule 5 is a protein called 3H109L Fab heavy chain.

Mol	Chain	Residues	Atoms					ZeroOcc	AltConf	Trace
			Total	C	N	O	S			
5	H	226	1715	1093	278	338	6	0	0	0

- Molecule 6 is a protein called 3H109L Fab light chain.

Mol	Chain	Residues	Atoms					ZeroOcc	AltConf	Trace
			Total	C	N	O	S			
6	L	211	1604	1009	276	312	7	0	0	0

- Molecule 7 is N-ACETYL-D-GLUCOSAMINE (three-letter code: NAG) (formula: C₈H₁₅NO₆).



Mol	Chain	Residues	Atoms				ZeroOcc	AltConf
			Total	C	N	O		
7	B	1	14	8	1	5	0	0
7	B	1	14	8	1	5	0	0

Continued on next page...

Continued from previous page...

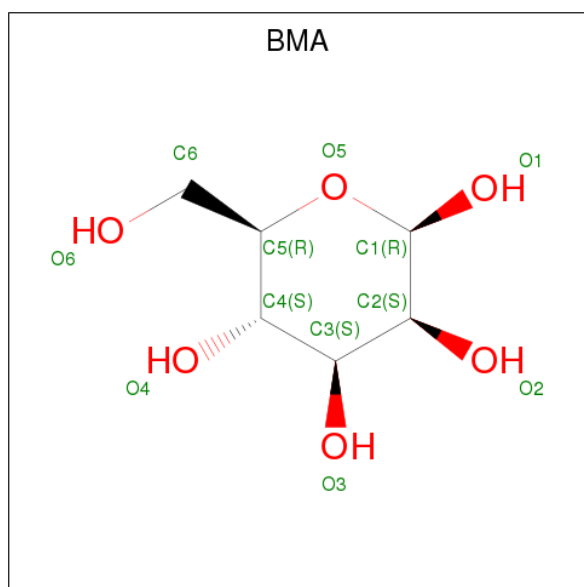
Mol	Chain	Residues	Atoms				ZeroOcc	AltConf
7	B	1	Total	C	N	O	0	0
			14	8	1	5		
7	D	1	Total	C	N	O	0	0
			14	8	1	5		
7	G	1	Total	C	N	O	0	0
			14	8	1	5		
7	G	1	Total	C	N	O	0	0
			14	8	1	5		
7	G	1	Total	C	N	O	0	0
			14	8	1	5		
7	G	1	Total	C	N	O	0	0
			14	8	1	5		
7	G	1	Total	C	N	O	0	0
			14	8	1	5		
7	G	1	Total	C	N	O	0	0
			14	8	1	5		
7	G	1	Total	C	N	O	0	0
			14	8	1	5		
7	G	1	Total	C	N	O	0	0
			14	8	1	5		
7	G	1	Total	C	N	O	0	0
			14	8	1	5		
7	G	1	Total	C	N	O	0	0
			14	8	1	5		
7	G	1	Total	C	N	O	0	0
			14	8	1	5		
7	G	1	Total	C	N	O	0	0
			14	8	1	5		
7	G	1	Total	C	N	O	0	0
			14	8	1	5		
7	G	1	Total	C	N	O	0	0
			14	8	1	5		

Continued on next page...

Continued from previous page...

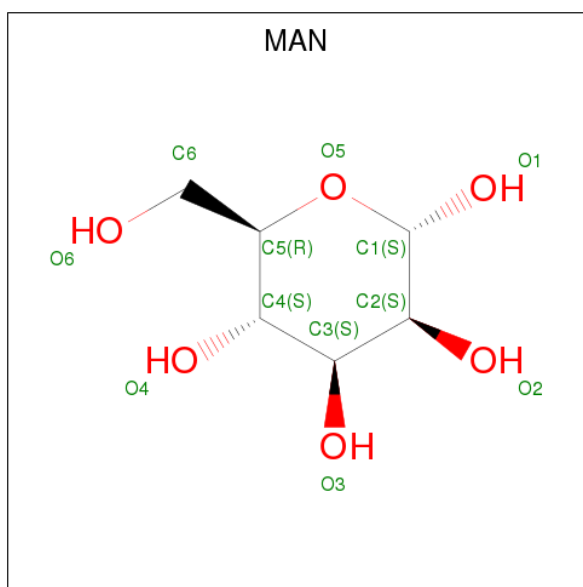
Mol	Chain	Residues	Atoms				ZeroOcc	AltConf
7	G	1	Total	C	N	O	0	0
			14	8	1	5		
7	G	1	Total	C	N	O	0	0
			14	8	1	5		
7	G	1	Total	C	N	O	0	0
			14	8	1	5		

- Molecule 8 is BETA-D-MANNOSE (three-letter code: BMA) (formula: $C_6H_{12}O_6$).



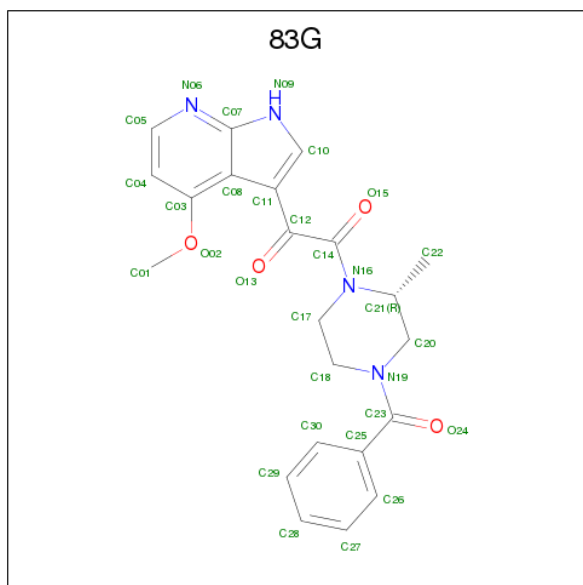
Mol	Chain	Residues	Atoms			ZeroOcc	AltConf
8	G	1	Total	C	O	0	0
			11	6	5		
8	G	1	Total	C	O	0	0
			11	6	5		
8	G	1	Total	C	O	0	0
			11	6	5		
8	G	1	Total	C	O	0	0
			11	6	5		

- Molecule 9 is ALPHA-D-MANNOSE (three-letter code: MAN) (formula: $C_6H_{12}O_6$).



Mol	Chain	Residues	Atoms	ZeroOcc	AltConf
9	G	1	Total C O 11 6 5	0	0
9	G	1	Total C O 11 6 5	0	0
9	G	1	Total C O 11 6 5	0	0
9	G	1	Total C O 11 6 5	0	0
9	G	1	Total C O 11 6 5	0	0
9	G	1	Total C O 11 6 5	0	0
9	G	1	Total C O 11 6 5	0	0
9	G	1	Total C O 11 6 5	0	0
9	G	1	Total C O 11 6 5	0	0
9	G	1	Total C O 11 6 5	0	0

- Molecule 10 is 1-[(2R)-4-(benzenecarbonyl)-2-methylpiperazin-1-yl]-2-(4-methoxy-1H-pyrrolo[2,3-b]pyridin-3-yl)ethane-1,2-dione (three-letter code: 83G) (formula: C₂₂H₂₂N₄O₄).



Mol	Chain	Residues	Atoms				ZeroOcc	AltConf
			Total	C	N	O		
10	G	1	30	22	4	4	0	0

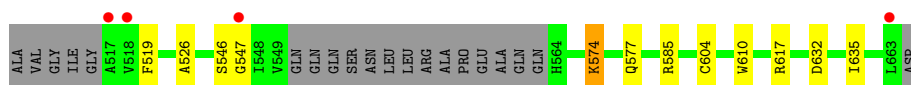
- Molecule 11 is water.

Mol	Chain	Residues	Atoms		ZeroOcc	AltConf
11	B	8	Total	O	0	0
			8	8		
11	D	7	Total	O	0	0
			7	7		
11	E	4	Total	O	0	0
			4	4		
11	G	29	Total	O	0	0
			29	29		
11	H	12	Total	O	0	0
			12	12		
11	L	16	Total	O	0	0
			16	16		

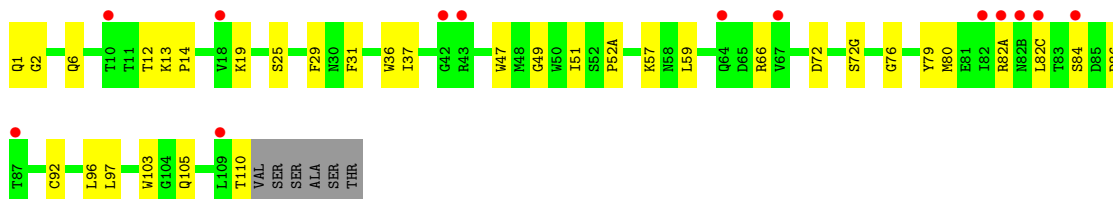
3 Residue-property plots i

These plots are drawn for all protein, RNA and DNA chains in the entry. The first graphic for a chain summarises the proportions of the various outlier classes displayed in the second graphic. The second graphic shows the sequence view annotated by issues in geometry and electron density. Residues are color-coded according to the number of geometric quality criteria for which they contain at least one outlier: green = 0, yellow = 1, orange = 2 and red = 3 or more. A red dot above a residue indicates a poor fit to the electron density ($RSRZ > 2$). Stretches of 2 or more consecutive residues without any outlier are shown as a green connector. Residues present in the sample, but not in the model, are shown in grey.

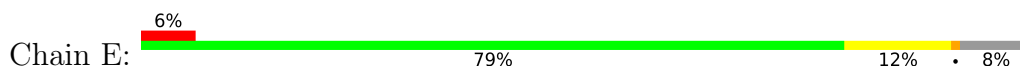
- Molecule 1: Envelope glycoprotein gp160



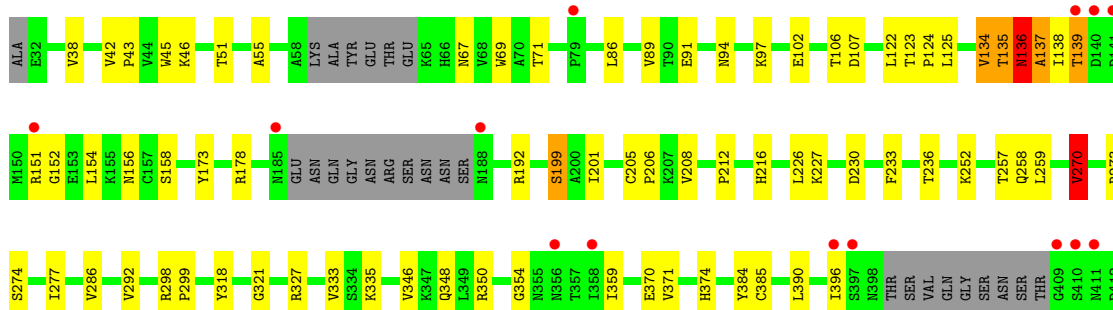
- Molecule 2: 35O22 scFv heavy chain portion

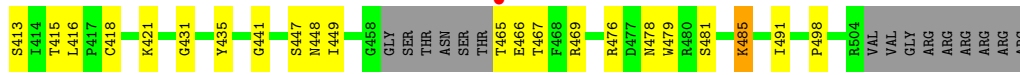


- Molecule 3: 35O22 scFv light chain portion

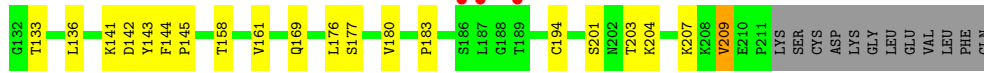
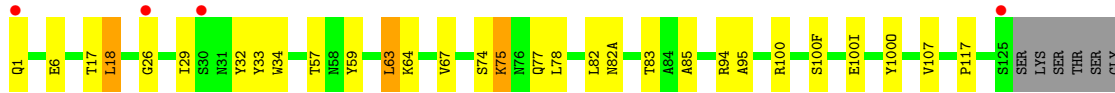
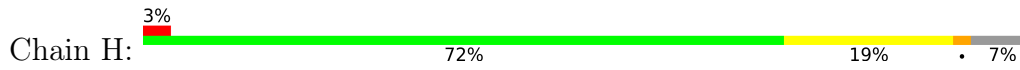


- Molecule 4: Envelope glycoprotein gp160

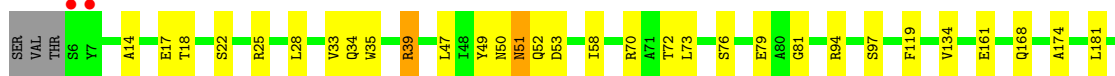
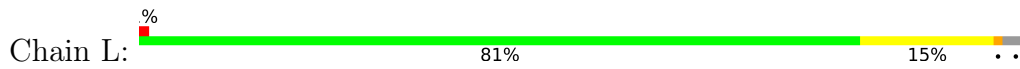




• Molecule 5: 3H109L Fab heavy chain



• Molecule 6: 3H109L Fab light chain



4 Data and refinement statistics

Property	Value	Source
Space group	P 63	Depositor
Cell constants a, b, c, α , β , γ	132.18Å 132.18Å 316.29Å 90.00° 90.00° 120.00°	Depositor
Resolution (Å)	43.27 – 2.34 43.27 – 2.34	Depositor EDS
% Data completeness (in resolution range)	38.9 (43.27-2.34) 38.9 (43.27-2.34)	Depositor EDS
R_{merge}	0.14	Depositor
R_{sym}	(Not available)	Depositor
$\langle I/\sigma(I) \rangle$ ¹	1.99 (at 2.34Å)	Xtrriage
Refinement program	PHENIX 1.13_2998	Depositor
R, R_{free}	0.233 , 0.281 0.233 , 0.281	Depositor DCC
R_{free} test set	2544 reflections (4.96%)	wwPDB-VP
Wilson B-factor (Å ²)	28.3	Xtrriage
Anisotropy	0.095	Xtrriage
Bulk solvent k_{sol} (e/Å ³), B_{sol} (Å ²)	0.30 , 34.2	EDS
L-test for twinning ²	$\langle L \rangle = 0.52$, $\langle L^2 \rangle = 0.36$	Xtrriage
Estimated twinning fraction	0.032 for h,-h-k,-l	Xtrriage
F_o, F_c correlation	0.86	EDS
Total number of atoms	10263	wwPDB-VP
Average B, all atoms (Å ²)	39.0	wwPDB-VP

Xtrriage's analysis on translational NCS is as follows: *The largest off-origin peak in the Patterson function is 2.05% of the height of the origin peak. No significant pseudotranslation is detected.*

¹Intensities estimated from amplitudes.

²Theoretical values of $\langle |L| \rangle$, $\langle L^2 \rangle$ for acentric reflections are 0.5, 0.333 respectively for untwinned datasets, and 0.375, 0.2 for perfectly twinned datasets.

5 Model quality [i](#)

5.1 Standard geometry [i](#)

Bond lengths and bond angles in the following residue types are not validated in this section: 83G, BMA, NAG, MAN

The Z score for a bond length (or angle) is the number of standard deviations the observed value is removed from the expected value. A bond length (or angle) with $|Z| > 5$ is considered an outlier worth inspection. RMSZ is the root-mean-square of all Z scores of the bond lengths (or angles).

Mol	Chain	Bond lengths		Bond angles	
		RMSZ	# Z >5	RMSZ	# Z >5
1	B	0.23	0/1075	0.39	0/1458
2	D	0.24	0/1021	0.47	0/1390
3	E	0.24	0/829	0.44	0/1133
4	G	0.25	0/3536	0.45	0/4797
5	H	0.25	0/1758	0.47	0/2397
6	L	0.25	0/1647	0.46	0/2247
All	All	0.25	0/9866	0.45	0/13422

There are no bond length outliers.

There are no bond angle outliers.

There are no chirality outliers.

There are no planarity outliers.

5.2 Too-close contacts [i](#)

In the following table, the Non-H and H(model) columns list the number of non-hydrogen atoms and hydrogen atoms in the chain respectively. The H(added) column lists the number of hydrogen atoms added and optimized by MolProbity. The Clashes column lists the number of clashes within the asymmetric unit, whereas Symm-Clashes lists symmetry related clashes.

Mol	Chain	Non-H	H(model)	H(added)	Clashes	Symm-Clashes
1	B	1056	0	1049	9	0
2	D	994	0	952	19	0
3	E	805	0	752	6	0
4	G	3465	0	3406	59	0
5	H	1715	0	1685	25	0
6	L	1604	0	1553	20	0
7	B	42	0	39	1	0

Continued on next page...

Continued from previous page...

Mol	Chain	Non-H	H(model)	H(added)	Clashes	Symm-Clashes
7	D	14	0	13	0	0
7	G	308	0	275	5	0
8	G	44	0	36	0	0
9	G	110	0	94	1	0
10	G	30	0	0	0	0
11	B	8	0	0	0	0
11	D	7	0	0	0	0
11	E	4	0	0	0	0
11	G	29	0	0	0	0
11	H	12	0	0	0	0
11	L	16	0	0	0	0
All	All	10263	0	9854	131	0

The all-atom clashscore is defined as the number of clashes found per 1000 atoms (including hydrogen atoms). The all-atom clashscore for this structure is 7.

All (131) close contacts within the same asymmetric unit are listed below, sorted by their clash magnitude.

Atom-1	Atom-2	Interatomic distance (Å)	Clash overlap (Å)
5:H:136:LEU:HD13	5:H:209:VAL:HG21	1.67	0.76
6:L:34:GLN:HG3	6:L:49:TYR:HA	1.68	0.75
4:G:136:ASN:HD22	6:L:94:ARG:HD2	1.57	0.70
4:G:137:ALA:HA	4:G:151:ARG:HD3	1.75	0.69
4:G:298:ARG:NH2	4:G:441:GLY:O	2.27	0.68
4:G:138:ILE:HG12	4:G:139:THR:H	1.61	0.66
6:L:50:ASN:O	6:L:52:GLN:N	2.28	0.66
2:D:96:LEU:HG	2:D:97:LEU:HG	1.79	0.64
6:L:34:GLN:NE2	6:L:49:TYR:O	2.30	0.63
4:G:274:SER:HB3	4:G:277:ILE:HG12	1.81	0.62
6:L:39:ARG:NH1	6:L:81:GLY:O	2.33	0.62
5:H:18:LEU:HD22	5:H:82:LEU:HB3	1.82	0.61
5:H:117:PRO:HB3	5:H:143:TYR:HB3	1.83	0.60
4:G:292:VAL:HG13	4:G:449:ILE:HB	1.83	0.60
5:H:63:LEU:HD13	5:H:67:VAL:HG21	1.83	0.60
6:L:50:ASN:O	6:L:53:ASP:N	2.35	0.59
1:B:546:SER:OG	1:B:547:GLY:N	2.34	0.59
4:G:201:ILE:HD11	4:G:435:TYR:HB2	1.83	0.59
4:G:270:VAL:HG13	4:G:348:GLN:HG3	1.84	0.59
5:H:29:ILE:HD11	5:H:78:LEU:HB3	1.83	0.58
4:G:230:ASP:HB3	4:G:233:PHE:HB2	1.86	0.58
4:G:257:THR:HG22	4:G:258:GLN:HG3	1.86	0.57

Continued on next page...

Continued from previous page...

Atom-1	Atom-2	Interatomic distance (Å)	Clash overlap (Å)
7:G:602:NAG:H3	7:G:602:NAG:H83	1.87	0.57
4:G:476:ARG:HA	4:G:479:TRP:CD1	2.41	0.56
4:G:346:VAL:HG13	4:G:359:ILE:HD11	1.87	0.56
4:G:359:ILE:HG22	4:G:466:GLU:HB2	1.87	0.55
2:D:6:GLN:H	2:D:105:GLN:HE22	1.53	0.54
5:H:17:THR:HA	5:H:82(A):ASN:HA	1.90	0.53
5:H:83:THR:HG23	5:H:85:ALA:H	1.73	0.53
3:E:4:LEU:HD11	3:E:90:SER:HB3	1.92	0.52
3:E:47:ILE:HD13	3:E:58:ILE:HD12	1.91	0.52
4:G:122:LEU:HD13	4:G:125:LEU:HD12	1.92	0.52
1:B:617:ARG:HH22	7:B:702:NAG:H4	1.75	0.52
5:H:100(O):TYR:HB3	6:L:34:GLN:HG2	1.91	0.51
4:G:257:THR:O	4:G:259:LEU:N	2.43	0.51
6:L:119:PHE:HB2	6:L:134:VAL:HG22	1.93	0.51
5:H:161:VAL:HA	5:H:180:VAL:HG12	1.92	0.51
4:G:233:PHE:O	4:G:273:ARG:NH1	2.43	0.51
2:D:19:LYS:HD2	2:D:79:TYR:HB3	1.93	0.50
3:E:38:TRP:CE2	3:E:44:PRO:HG3	2.47	0.50
4:G:55:ALA:HB3	4:G:216:HIS:HB2	1.94	0.50
2:D:51:ILE:HG13	2:D:57:LYS:HB3	1.93	0.50
4:G:94:ASN:HA	4:G:236:THR:HG22	1.94	0.50
2:D:36:TRP:CZ3	2:D:92:CYS:HB3	2.46	0.49
4:G:122:LEU:HB2	4:G:201:ILE:HG23	1.94	0.49
3:E:27(B):VAL:HG11	3:E:97:VAL:HG11	1.94	0.49
2:D:72:ASP:OD1	2:D:72:ASP:N	2.37	0.49
5:H:6:GLU:OE1	5:H:6:GLU:N	2.46	0.49
4:G:205:CYS:O	4:G:208:VAL:HG22	2.13	0.49
4:G:67:ASN:HD21	4:G:71:THR:HG23	1.77	0.49
6:L:14:ALA:HB3	6:L:17:GLU:HG3	1.94	0.49
1:B:585:ARG:NH2	4:G:491:ILE:O	2.46	0.48
4:G:134:VAL:HB	4:G:156:ASN:HB2	1.95	0.48
2:D:29:PHE:CE2	2:D:52(A):PRO:HB3	2.48	0.48
4:G:136:ASN:O	4:G:138:ILE:N	2.47	0.48
5:H:59:TYR:HB2	5:H:64:LYS:HD2	1.95	0.48
5:H:74:SER:OG	5:H:75:LYS:NZ	2.42	0.47
1:B:577:GLN:HG2	4:G:51:THR:HG21	1.95	0.47
4:G:370:GLU:HG3	4:G:384:TYR:HE2	1.79	0.47
1:B:610:TRP:CD2	4:G:498:PRO:HB3	2.49	0.47
6:L:197:THR:HA	6:L:202:THR:HA	1.97	0.47
6:L:18:THR:HG22	6:L:76:SER:HA	1.96	0.47
4:G:158:SER:HA	4:G:173:TYR:HA	1.97	0.47

Continued on next page...

Continued from previous page...

Atom-1	Atom-2	Interatomic distance (Å)	Clash overlap (Å)
6:L:185:GLN:HA	6:L:188:MET:HG2	1.97	0.47
4:G:259:LEU:HB2	4:G:374:HIS:CE1	2.50	0.46
6:L:168:GLN:OE1	6:L:174:ALA:HB2	2.15	0.46
2:D:47:TRP:CZ2	2:D:49:GLY:HA2	2.51	0.46
4:G:91:GLU:HG3	4:G:226:LEU:HD13	1.97	0.46
6:L:70:ARG:HG3	6:L:72:THR:HG23	1.97	0.46
4:G:45:TRP:O	4:G:46:LYS:HD2	2.16	0.45
4:G:299:PRO:HG2	4:G:327:ARG:HB2	1.99	0.45
2:D:19:LYS:HA	2:D:80:MET:O	2.16	0.45
4:G:384:TYR:CE1	4:G:421:LYS:HB2	2.52	0.45
4:G:102:GLU:OE2	4:G:476:ARG:NH1	2.50	0.45
4:G:478:ASN:O	4:G:481:SER:OG	2.27	0.45
5:H:169:GLN:HG2	6:L:161:GLU:HG3	1.98	0.45
4:G:333:VAL:HG11	4:G:390:LEU:HD21	1.98	0.45
4:G:385:CYS:HA	4:G:418:CYS:HA	1.99	0.45
4:G:86:LEU:HB3	4:G:89:VAL:HG21	1.99	0.44
1:B:632:ASP:HA	1:B:635:ILE:HG22	1.99	0.44
4:G:206:PRO:HG3	4:G:318:TYR:CE2	2.52	0.44
2:D:13:LYS:HD2	2:D:13:LYS:HA	1.68	0.44
1:B:526:ALA:HA	4:G:43:PRO:HB2	2.00	0.44
2:D:31:PHE:HA	7:G:601:NAG:H62	1.99	0.43
5:H:176:LEU:HG	5:H:177:SER:H	1.83	0.43
6:L:22:SER:HA	6:L:72:THR:HG22	1.99	0.43
1:B:574:LYS:HE3	4:G:107:ASP:OD1	2.19	0.43
4:G:123:THR:N	4:G:124:PRO:HD2	2.33	0.43
2:D:37:ILE:HG13	2:D:103:TRP:CH2	2.53	0.43
5:H:18:LEU:HD12	5:H:107:VAL:HG11	2.01	0.43
6:L:47:LEU:HA	6:L:58:ILE:HD13	1.99	0.43
6:L:28:LEU:HB2	6:L:94:ARG:HB2	2.00	0.43
7:G:622:NAG:H83	7:G:622:NAG:H3	2.01	0.43
4:G:45:TRP:NE1	4:G:91:GLU:OE2	2.34	0.43
5:H:33:TYR:HB2	5:H:95:ALA:O	2.18	0.43
2:D:82(A):ARG:O	2:D:82(C):LEU:N	2.52	0.43
3:E:19:VAL:HG12	3:E:20:THR:H	1.82	0.43
4:G:227:LYS:HA	4:G:485:LYS:O	2.20	0.42
6:L:33:VAL:HG12	6:L:51:ASN:OD1	2.19	0.42
4:G:447:SER:HB3	7:G:614:NAG:HN2	1.85	0.42
2:D:86:ASP:OD1	2:D:86:ASP:N	2.53	0.42
6:L:35:TRP:CD2	6:L:73:LEU:HB2	2.55	0.42
4:G:42:VAL:HA	4:G:43:PRO:HD3	1.89	0.42
9:G:628:MAN:O6	5:H:100:ARG:NH2	2.52	0.42

Continued on next page...

Continued from previous page...

Atom-1	Atom-2	Interatomic distance (Å)	Clash overlap (Å)
2:D:29:PHE:CG	2:D:76:GLY:HA3	2.54	0.42
5:H:34:TRP:CZ3	5:H:94:ARG:HB2	2.54	0.42
4:G:212:PRO:HB2	4:G:252:LYS:HB3	2.01	0.42
4:G:277:ILE:HG13	7:G:613:NAG:H81	2.01	0.41
5:H:141:LYS:NZ	5:H:142:ASP:OD2	2.52	0.41
4:G:390:LEU:HG	4:G:416:LEU:HD21	2.02	0.41
5:H:133:THR:HG22	5:H:183:PRO:HA	2.01	0.41
4:G:199:SER:HA	4:G:431:GLY:HA2	2.03	0.41
4:G:152:GLY:O	4:G:178:ARG:HB2	2.20	0.41
4:G:335:LYS:H	4:G:413:SER:HA	1.85	0.41
2:D:66:ARG:O	2:D:82(A):ARG:N	2.54	0.41
1:B:604:CYS:SG	4:G:38:VAL:HB	2.60	0.41
5:H:1:GLN:O	5:H:26:GLY:HA3	2.20	0.41
5:H:144:PHE:HA	5:H:145:PRO:HA	1.78	0.41
4:G:94:ASN:HD22	4:G:97:LYS:HD3	1.85	0.41
5:H:207:LYS:HA	5:H:207:LYS:HD3	1.92	0.41
5:H:32:TYR:CD1	5:H:94:ARG:HD2	2.56	0.41
2:D:1:GLN:HB3	2:D:2:GLY:H	1.75	0.40
4:G:350:ARG:HD3	4:G:354:GLY:O	2.21	0.40
4:G:259:LEU:HB2	4:G:374:HIS:ND1	2.36	0.40
2:D:57:LYS:HB3	2:D:57:LYS:HE2	1.96	0.40
4:G:257:THR:HG21	4:G:371:VAL:HA	2.02	0.40
4:G:67:ASN:HD22	4:G:69:TRP:HD1	1.68	0.40
5:H:201:SER:O	5:H:203:THR:HG23	2.21	0.40
4:G:94:ASN:HB3	4:G:97:LYS:HG2	2.03	0.40
2:D:14:PRO:HG3	2:D:84:SER:HB3	2.02	0.40
3:E:83:GLU:HA	3:E:104:VAL:O	2.21	0.40

There are no symmetry-related clashes.

5.3 Torsion angles [i](#)

5.3.1 Protein backbone [i](#)

In the following table, the Percentiles column shows the percent Ramachandran outliers of the chain as a percentile score with respect to all X-ray entries followed by that with respect to entries of similar resolution.

The Analysed column shows the number of residues for which the backbone conformation was analysed, and the total number of residues.

Mol	Chain	Analysed	Favoured	Allowed	Outliers	Percentiles	
1	B	129/153 (84%)	119 (92%)	10 (8%)	0	100	100
2	D	126/134 (94%)	113 (90%)	13 (10%)	0	100	100
3	E	103/114 (90%)	85 (82%)	18 (18%)	0	100	100
4	G	430/481 (89%)	402 (94%)	23 (5%)	5 (1%)	14	12
5	H	222/244 (91%)	205 (92%)	17 (8%)	0	100	100
6	L	209/217 (96%)	199 (95%)	9 (4%)	1 (0%)	31	34
All	All	1219/1343 (91%)	1123 (92%)	90 (7%)	6 (0%)	31	34

All (6) Ramachandran outliers are listed below:

Mol	Chain	Res	Type
6	L	51	ASN
4	G	137	ALA
4	G	135	THR
4	G	136	ASN
4	G	321	GLY
4	G	270	VAL

5.3.2 Protein sidechains [i](#)

In the following table, the Percentiles column shows the percent sidechain outliers of the chain as a percentile score with respect to all X-ray entries followed by that with respect to entries of similar resolution.

The Analysed column shows the number of residues for which the sidechain conformation was analysed, and the total number of residues.

Mol	Chain	Analysed	Rotameric	Outliers	Percentiles	
1	B	114/129 (88%)	112 (98%)	2 (2%)	62	73
2	D	107/112 (96%)	102 (95%)	5 (5%)	29	36
3	E	92/100 (92%)	88 (96%)	4 (4%)	32	40
4	G	392/427 (92%)	375 (96%)	17 (4%)	32	40
5	H	196/212 (92%)	185 (94%)	11 (6%)	23	27
6	L	175/181 (97%)	169 (97%)	6 (3%)	40	50
All	All	1076/1161 (93%)	1031 (96%)	45 (4%)	32	41

All (45) residues with a non-rotameric sidechain are listed below:

Mol	Chain	Res	Type
1	B	519	PHE
1	B	574	LYS
2	D	12	THR
2	D	25	SER
2	D	59	LEU
2	D	72(G)	SER
2	D	110	THR
3	E	27(B)	VAL
3	E	82	ASP
3	E	89	CYS
3	E	96	CYS
4	G	106	THR
4	G	134	VAL
4	G	135	THR
4	G	136	ASN
4	G	139	THR
4	G	154	LEU
4	G	192	ARG
4	G	199	SER
4	G	270	VAL
4	G	286	VAL
4	G	396	ILE
4	G	415	THR
4	G	448	ASN
4	G	465	THR
4	G	467	THR
4	G	469	ARG
4	G	485	LYS
5	H	18	LEU
5	H	57	THR
5	H	63	LEU
5	H	75	LYS
5	H	77	GLN
5	H	100(F)	SER
5	H	100(I)	GLU
5	H	158	THR
5	H	194	CYS
5	H	204	LYS
5	H	209	VAL
6	L	25	ARG
6	L	39	ARG
6	L	79	GLU
6	L	97	SER

Continued on next page...

Continued from previous page...

Mol	Chain	Res	Type
6	L	181	LEU
6	L	197	THR

Some sidechains can be flipped to improve hydrogen bonding and reduce clashes. There are no such sidechains identified.

5.3.3 RNA [i](#)

There are no RNA molecules in this entry.

5.4 Non-standard residues in protein, DNA, RNA chains [i](#)

There are no non-standard protein/DNA/RNA residues in this entry.

5.5 Carbohydrates [i](#)

There are no carbohydrates in this entry.

5.6 Ligand geometry [i](#)

41 ligands are modelled in this entry.

In the following table, the Counts columns list the number of bonds (or angles) for which Mogul statistics could be retrieved, the number of bonds (or angles) that are observed in the model and the number of bonds (or angles) that are defined in the Chemical Component Dictionary. The Link column lists molecule types, if any, to which the group is linked. The Z score for a bond length (or angle) is the number of standard deviations the observed value is removed from the expected value. A bond length (or angle) with $|Z| > 2$ is considered an outlier worth inspection. RMSZ is the root-mean-square of all Z scores of the bond lengths (or angles).

Mol	Type	Chain	Res	Link	Bond lengths			Bond angles		
					Counts	RMSZ	# Z > 2	Counts	RMSZ	# Z > 2
7	NAG	B	701	1	14,14,15	0.34	0	17,19,21	0.57	0
7	NAG	B	702	1	14,14,15	0.35	0	17,19,21	0.54	0
7	NAG	B	703	1	14,14,15	0.28	0	17,19,21	0.50	0
7	NAG	D	201	2	14,14,15	0.39	0	17,19,21	0.56	0
7	NAG	G	601	4,7	14,14,15	0.26	0	17,19,21	0.52	0
7	NAG	G	602	8,7	14,14,15	0.40	0	17,19,21	1.27	2 (11%)
8	BMA	G	603	9,7	11,11,12	0.79	0	15,15,17	0.86	0
9	MAN	G	604	8	11,11,12	0.67	0	15,15,17	0.98	2 (13%)

Mol	Type	Chain	Res	Link	Bond lengths			Bond angles		
					Counts	RMSZ	# Z > 2	Counts	RMSZ	# Z > 2
9	MAN	G	605	9,8	11,11,12	1.28	2 (18%)	15,15,17	1.75	4 (26%)
9	MAN	G	606	9	11,11,12	1.62	2 (18%)	15,15,17	2.23	4 (26%)
7	NAG	G	607	4	14,14,15	0.31	0	17,19,21	0.55	0
7	NAG	G	608	4,7	14,14,15	0.40	0	17,19,21	0.49	0
7	NAG	G	609	8,7	14,14,15	0.22	0	17,19,21	0.50	0
8	BMA	G	610	7	11,11,12	0.64	0	15,15,17	0.72	0
7	NAG	G	611	4	14,14,15	0.33	0	17,19,21	0.49	0
7	NAG	G	612	4	14,14,15	0.30	0	17,19,21	0.55	0
7	NAG	G	613	4	14,14,15	0.25	0	17,19,21	0.47	0
7	NAG	G	614	4,7	14,14,15	0.24	0	17,19,21	0.65	1 (5%)
7	NAG	G	615	8,7	14,14,15	0.28	0	17,19,21	0.62	0
8	BMA	G	616	7	11,11,12	0.66	0	15,15,17	0.73	0
7	NAG	G	617	4	14,14,15	0.25	0	17,19,21	0.48	0
7	NAG	G	618	4,7	14,14,15	0.33	0	17,19,21	0.47	0
7	NAG	G	619	7	14,14,15	0.25	0	17,19,21	0.47	0
7	NAG	G	620	4,7	14,14,15	0.19	0	17,19,21	0.52	0
7	NAG	G	621	7	14,14,15	0.21	0	17,19,21	0.54	0
7	NAG	G	622	4,7	14,14,15	0.35	0	17,19,21	1.47	2 (11%)
7	NAG	G	623	8,7	14,14,15	0.31	0	17,19,21	0.45	0
8	BMA	G	624	9,7	11,11,12	0.68	0	15,15,17	1.16	2 (13%)
9	MAN	G	625	9,8	11,11,12	0.74	0	15,15,17	0.97	1 (6%)
9	MAN	G	626	9	11,11,12	0.57	0	15,15,17	1.10	1 (6%)
9	MAN	G	627	9	11,11,12	0.77	0	15,15,17	1.41	2 (13%)
9	MAN	G	628	9,8	11,11,12	0.75	1 (9%)	15,15,17	1.28	2 (13%)
9	MAN	G	629	9	11,11,12	0.68	0	15,15,17	0.92	1 (6%)
9	MAN	G	630	9	11,11,12	0.92	1 (9%)	15,15,17	0.95	1 (6%)
9	MAN	G	631	9	11,11,12	1.06	0	15,15,17	1.11	1 (6%)
7	NAG	G	632	4	14,14,15	0.25	0	17,19,21	0.55	0
7	NAG	G	633	4	14,14,15	0.24	0	17,19,21	0.54	0
7	NAG	G	634	4	14,14,15	0.31	0	17,19,21	0.64	1 (5%)
7	NAG	G	635	7	14,14,15	0.97	1 (7%)	17,19,21	0.78	0
7	NAG	G	636	7	14,14,15	0.26	0	17,19,21	0.46	0
10	83G	G	637	-	32,33,33	2.65	7 (21%)	38,47,47	2.21	16 (42%)

In the following table, the Chirals column lists the number of chiral outliers, the number of chiral centers analysed, the number of these observed in the model and the number defined in the Chemical Component Dictionary. Similar counts are reported in the Torsion and Rings columns. '-' means no outliers of that kind were identified.

Mol	Type	Chain	Res	Link	Chirals	Torsions	Rings
7	NAG	B	701	1	-	0/6/23/26	0/1/1/1
7	NAG	B	702	1	-	0/6/23/26	0/1/1/1
7	NAG	B	703	1	-	0/6/23/26	0/1/1/1
7	NAG	D	201	2	-	0/6/23/26	0/1/1/1
7	NAG	G	601	4,7	-	0/6/23/26	0/1/1/1
7	NAG	G	602	8,7	-	0/6/23/26	0/1/1/1
8	BMA	G	603	9,7	-	0/2/19/22	0/1/1/1
9	MAN	G	604	8	-	0/2/19/22	0/1/1/1
9	MAN	G	605	9,8	-	0/2/19/22	0/1/1/1
9	MAN	G	606	9	-	0/2/19/22	0/1/1/1
7	NAG	G	607	4	-	0/6/23/26	0/1/1/1
7	NAG	G	608	4,7	-	0/6/23/26	0/1/1/1
7	NAG	G	609	8,7	-	0/6/23/26	0/1/1/1
8	BMA	G	610	7	-	0/2/19/22	0/1/1/1
7	NAG	G	611	4	-	0/6/23/26	0/1/1/1
7	NAG	G	612	4	-	0/6/23/26	0/1/1/1
7	NAG	G	613	4	-	0/6/23/26	0/1/1/1
7	NAG	G	614	4,7	-	0/6/23/26	0/1/1/1
7	NAG	G	615	8,7	-	0/6/23/26	0/1/1/1
8	BMA	G	616	7	-	0/2/19/22	0/1/1/1
7	NAG	G	617	4	-	0/6/23/26	0/1/1/1
7	NAG	G	618	4,7	-	0/6/23/26	0/1/1/1
7	NAG	G	619	7	-	0/6/23/26	0/1/1/1
7	NAG	G	620	4,7	-	0/6/23/26	0/1/1/1
7	NAG	G	621	7	-	0/6/23/26	0/1/1/1
7	NAG	G	622	4,7	-	0/6/23/26	0/1/1/1
7	NAG	G	623	8,7	-	0/6/23/26	0/1/1/1
8	BMA	G	624	9,7	-	0/2/19/22	0/1/1/1
9	MAN	G	625	9,8	-	0/2/19/22	0/1/1/1
9	MAN	G	626	9	-	0/2/19/22	0/1/1/1
9	MAN	G	627	9	-	0/2/19/22	0/1/1/1
9	MAN	G	628	9,8	-	0/2/19/22	0/1/1/1
9	MAN	G	629	9	-	0/2/19/22	0/1/1/1
9	MAN	G	630	9	-	0/2/19/22	0/1/1/1
9	MAN	G	631	9	-	0/2/19/22	0/1/1/1
7	NAG	G	632	4	-	0/6/23/26	0/1/1/1
7	NAG	G	633	4	-	0/6/23/26	0/1/1/1
7	NAG	G	634	4	-	0/6/23/26	0/1/1/1
7	NAG	G	635	7	-	0/6/23/26	0/1/1/1
7	NAG	G	636	7	-	0/6/23/26	0/1/1/1
10	83G	G	637	-	-	0/18/35/35	0/4/4/4

All (14) bond length outliers are listed below:

Mol	Chain	Res	Type	Atoms	Z	Observed(Å)	Ideal(Å)
10	G	637	83G	C18-N19	-3.28	1.41	1.47
7	G	635	NAG	O5-C1	-3.28	1.38	1.43
10	G	637	83G	C10-N09	-2.32	1.31	1.36
9	G	630	MAN	O5-C1	-2.15	1.40	1.43
9	G	628	MAN	C1-C2	2.29	1.57	1.52
10	G	637	83G	C11-C12	2.63	1.54	1.49
9	G	605	MAN	C2-C3	2.81	1.56	1.52
9	G	605	MAN	C1-C2	2.82	1.58	1.52
9	G	606	MAN	O5-C1	3.23	1.49	1.43
10	G	637	83G	C25-C23	3.37	1.55	1.50
9	G	606	MAN	C1-C2	3.88	1.61	1.52
10	G	637	83G	C23-N19	5.56	1.47	1.34
10	G	637	83G	C14-N16	7.94	1.47	1.34
10	G	637	83G	O13-C12	8.14	1.40	1.23

All (43) bond angle outliers are listed below:

Mol	Chain	Res	Type	Atoms	Z	Observed(°)	Ideal(°)
10	G	637	83G	O13-C12-C11	-4.42	109.22	123.46
10	G	637	83G	O02-C03-C04	-3.13	119.05	124.18
10	G	637	83G	C04-C05-N06	-3.12	119.58	124.60
10	G	637	83G	C11-C08-C07	-3.05	105.10	107.54
10	G	637	83G	C01-O02-C03	-2.68	113.97	117.76
9	G	631	MAN	O2-C2-C3	-2.52	105.27	110.19
9	G	629	MAN	O2-C2-C3	-2.48	105.36	110.19
10	G	637	83G	C11-C12-C14	-2.45	115.11	118.67
9	G	628	MAN	O2-C2-C3	-2.41	105.49	110.19
9	G	606	MAN	O2-C2-C3	-2.34	105.62	110.19
9	G	627	MAN	O2-C2-C3	-2.34	105.62	110.19
10	G	637	83G	O24-C23-N19	-2.27	118.48	122.35
9	G	605	MAN	O2-C2-C3	-2.27	105.76	110.19
10	G	637	83G	O13-C12-C14	-2.26	114.36	117.72
9	G	630	MAN	O2-C2-C3	-2.25	105.80	110.19
9	G	604	MAN	O2-C2-C3	-2.24	105.81	110.19
10	G	637	83G	O15-C14-N16	-2.23	117.37	122.15
9	G	625	MAN	O2-C2-C3	-2.14	106.02	110.19
7	G	602	NAG	C1-C2-N2	2.01	113.92	110.49
10	G	637	83G	C05-C04-C03	2.02	120.42	118.02
8	G	624	BMA	C1-C2-C3	2.03	112.22	109.66
7	G	614	NAG	C1-O5-C5	2.10	115.07	112.19
7	G	634	NAG	C1-O5-C5	2.11	115.09	112.19
9	G	605	MAN	C2-C3-C4	2.16	114.61	110.87
9	G	605	MAN	C1-O5-C5	2.25	115.29	112.19

Continued on next page...

Continued from previous page...

Mol	Chain	Res	Type	Atoms	Z	Observed(°)	Ideal(°)
9	G	604	MAN	C1-O5-C5	2.28	115.33	112.19
8	G	624	BMA	C1-O5-C5	2.43	115.53	112.19
10	G	637	83G	C25-C23-N19	2.52	122.00	118.75
10	G	637	83G	C21-N16-C14	2.53	126.59	120.26
9	G	606	MAN	C1-C2-C3	2.62	112.98	109.66
9	G	626	MAN	C1-O5-C5	2.68	115.87	112.19
10	G	637	83G	C18-C17-N16	2.68	113.77	110.24
7	G	622	NAG	C1-C2-N2	2.72	115.13	110.49
9	G	606	MAN	O5-C1-C2	3.04	115.51	110.78
9	G	628	MAN	C1-O5-C5	3.07	116.41	112.19
10	G	637	83G	C05-N06-C07	4.09	121.78	116.70
10	G	637	83G	O02-C03-C08	4.12	122.12	115.89
7	G	602	NAG	C2-N2-C7	4.18	129.05	122.94
9	G	627	MAN	C1-O5-C5	4.41	118.25	112.19
7	G	622	NAG	C2-N2-C7	4.42	129.40	122.94
9	G	605	MAN	C1-C2-C3	4.76	115.68	109.66
10	G	637	83G	C12-C14-N16	6.30	125.32	118.95
9	G	606	MAN	C1-O5-C5	6.83	121.58	112.19

There are no chirality outliers.

There are no torsion outliers.

There are no ring outliers.

7 monomers are involved in 7 short contacts:

Mol	Chain	Res	Type	Clashes	Symm-Clashes
7	B	702	NAG	1	0
7	G	601	NAG	1	0
7	G	602	NAG	1	0
7	G	613	NAG	1	0
7	G	614	NAG	1	0
7	G	622	NAG	1	0
9	G	628	MAN	1	0

5.7 Other polymers [i](#)

There are no such residues in this entry.

5.8 Polymer linkage issues [i](#)

There are no chain breaks in this entry.

6 Fit of model and data

6.1 Protein, DNA and RNA chains

In the following table, the column labelled ‘#RSRZ > 2’ contains the number (and percentage) of RSRZ outliers, followed by percent RSRZ outliers for the chain as percentile scores relative to all X-ray entries and entries of similar resolution. The OWAB column contains the minimum, median, 95th percentile and maximum values of the occupancy-weighted average B-factor per residue. The column labelled ‘Q < 0.9’ lists the number of (and percentage) of residues with an average occupancy less than 0.9.

Mol	Chain	Analysed	<RSRZ>	#RSRZ>2	OWAB(Å ²)	Q<0.9
1	B	133/153 (86%)	-0.07	4 (3%) 50 60	5, 24, 60, 115	0
2	D	128/134 (95%)	0.50	13 (10%) 7 11	28, 62, 97, 104	0
3	E	105/114 (92%)	0.30	7 (6%) 18 26	27, 53, 88, 94	0
4	G	440/481 (91%)	-0.17	15 (3%) 45 56	6, 25, 76, 127	0
5	H	226/244 (92%)	0.10	7 (3%) 49 59	15, 45, 78, 106	0
6	L	211/217 (97%)	-0.41	3 (1%) 75 83	11, 29, 48, 105	0
All	All	1243/1343 (92%)	-0.04	49 (3%) 39 50	5, 35, 83, 127	0

All (49) RSRZ outliers are listed below:

Mol	Chain	Res	Type	RSRZ
1	B	517	ALA	8.7
5	H	187	LEU	8.2
1	B	518	VAL	6.9
4	G	141	ASP	5.7
4	G	409	GLY	5.7
5	H	26	GLY	5.7
4	G	396	ILE	5.6
6	L	7	TYR	5.4
1	B	663	LEU	5.1
2	D	18	VAL	5.0
4	G	465	THR	3.7
4	G	188	ASN	3.6
5	H	189	THR	3.6
2	D	82(C)	LEU	3.6
4	G	397	SER	3.5
3	E	15	LEU	3.5
3	E	8	ALA	3.4
5	H	125	SER	3.3
4	G	410	SER	3.2

Continued on next page...

Continued from previous page...

Mol	Chain	Res	Type	RSRZ
2	D	64	GLN	3.2
4	G	140	ASP	3.2
2	D	109	LEU	3.0
4	G	151	ARG	2.9
4	G	356	ASN	2.9
2	D	82(B)	ASN	2.9
2	D	43	ARG	2.8
6	L	210	THR	2.8
3	E	78	LEU	2.8
3	E	80	PRO	2.7
2	D	67	VAL	2.7
2	D	42	GLY	2.6
1	B	547	GLY	2.6
4	G	185	ASN	2.5
2	D	10	THR	2.5
5	H	30	SER	2.5
3	E	103	LYS	2.5
4	G	79	PRO	2.4
5	H	1	GLN	2.4
2	D	87	THR	2.4
2	D	82(A)	ARG	2.3
3	E	17	GLN	2.3
6	L	6	SER	2.3
3	E	14	SER	2.2
2	D	82	ILE	2.2
4	G	139	THR	2.1
4	G	358	ILE	2.1
4	G	411	ASN	2.1
5	H	186	SER	2.1
2	D	84	SER	2.0

6.2 Non-standard residues in protein, DNA, RNA chains [\(i\)](#)

There are no non-standard protein/DNA/RNA residues in this entry.

6.3 Carbohydrates [\(i\)](#)

There are no carbohydrates in this entry.

6.4 Ligands

In the following table, the Atoms column lists the number of modelled atoms in the group and the number defined in the chemical component dictionary. The B-factors column lists the minimum, median, 95th percentile and maximum values of B factors of atoms in the group. The column labelled 'Q< 0.9' lists the number of atoms with occupancy less than 0.9.

Mol	Type	Chain	Res	Atoms	RSCC	RSR	B-factors(Å ²)	Q<0.9
7	NAG	B	703	14/15	0.81	0.25	65,87,96,97	0
9	MAN	G	631	11/12	0.82	0.17	51,68,78,86	0
8	BMA	G	610	11/12	0.83	0.28	72,89,104,108	0
7	NAG	G	607	14/15	0.83	0.25	67,82,110,114	0
7	NAG	B	701	14/15	0.84	0.42	75,87,104,117	0
9	MAN	G	605	11/12	0.86	0.15	45,67,80,89	0
7	NAG	B	702	14/15	0.86	0.36	77,87,103,106	0
7	NAG	G	636	14/15	0.87	0.23	66,85,99,105	0
8	BMA	G	616	11/12	0.87	0.24	81,90,101,103	0
9	MAN	G	606	11/12	0.87	0.26	65,76,94,96	0
7	NAG	G	619	14/15	0.88	0.31	66,95,107,116	0
7	NAG	G	617	14/15	0.88	0.27	45,70,81,93	0
7	NAG	G	613	14/15	0.89	0.15	60,68,78,88	0
7	NAG	G	622	14/15	0.89	0.13	23,40,50,61	0
7	NAG	D	201	14/15	0.90	0.23	45,78,107,109	0
9	MAN	G	625	11/12	0.91	0.10	34,44,62,75	0
9	MAN	G	627	11/12	0.91	0.25	67,73,88,91	0
7	NAG	G	621	14/15	0.91	0.25	44,70,85,92	0
7	NAG	G	635	14/15	0.91	0.15	37,66,82,98	0
7	NAG	G	632	14/15	0.91	0.17	43,70,80,84	0
9	MAN	G	626	11/12	0.92	0.15	35,49,74,84	0
7	NAG	G	612	14/15	0.92	0.14	32,52,71,73	0
7	NAG	G	633	14/15	0.93	0.19	47,62,75,75	0
7	NAG	G	623	14/15	0.94	0.09	18,41,51,54	0
9	MAN	G	630	11/12	0.94	0.10	29,38,48,49	0
7	NAG	G	601	14/15	0.94	0.11	17,23,37,38	0
7	NAG	G	615	14/15	0.94	0.14	33,48,81,82	0
7	NAG	G	609	14/15	0.95	0.17	36,67,86,87	0
7	NAG	G	602	14/15	0.95	0.10	23,31,43,44	0
7	NAG	G	608	14/15	0.95	0.09	22,36,49,55	0
9	MAN	G	629	11/12	0.95	0.09	15,20,32,34	0
7	NAG	G	634	14/15	0.95	0.10	26,39,45,57	0
7	NAG	G	614	14/15	0.95	0.13	10,21,45,53	0
7	NAG	G	611	14/15	0.95	0.17	27,57,70,86	0
10	83G	G	637	30/30	0.95	0.12	4,12,20,21	0
9	MAN	G	628	11/12	0.95	0.11	15,22,30,42	0
7	NAG	G	620	14/15	0.96	0.10	14,28,39,56	0

Continued on next page...

Continued from previous page...

Mol	Type	Chain	Res	Atoms	RSCC	RSR	B-factors(\AA^2)	Q<0.9
9	MAN	G	604	11/12	0.96	0.10	23,32,51,51	0
8	BMA	G	624	11/12	0.96	0.07	20,27,35,37	0
7	NAG	G	618	14/15	0.96	0.10	31,46,61,84	0
8	BMA	G	603	11/12	0.96	0.09	25,33,41,55	0

6.5 Other polymers [i](#)

There are no such residues in this entry.