



Full wwPDB X-ray Structure Validation Report ⓘ

Mar 13, 2023 – 06:21 pm GMT

PDB ID : 5MVM
Title : X-ray structure of the F14'A -N15'A double mutant of GLIC in complex with propofol
Authors : Fourati, Z.; Delarue, M.
Deposited on : 2017-01-16
Resolution : 3.10 Å(reported)

This is a Full wwPDB X-ray Structure Validation Report for a publicly released PDB entry.

We welcome your comments at validation@mail.wwpdb.org

A user guide is available at

<https://www.wwpdb.org/validation/2017/XrayValidationReportHelp>

with specific help available everywhere you see the ⓘ symbol.

The types of validation reports are described at

<http://www.wwpdb.org/validation/2017/FAQs#types>.

The following versions of software and data (see [references ⓘ](#)) were used in the production of this report:

MolProbity : 4.02b-467
Mogul : 1.8.4, CSD as541be (2020)
Xtriage (Phenix) : 1.13
EDS : 2.32.1
buster-report : 1.1.7 (2018)
Percentile statistics : 20191225.v01 (using entries in the PDB archive December 25th 2019)
Refmac : 5.8.0158
CCP4 : 7.0.044 (Gargrove)
Ideal geometry (proteins) : Engh & Huber (2001)
Ideal geometry (DNA, RNA) : Parkinson et al. (1996)
Validation Pipeline (wwPDB-VP) : 2.32.1

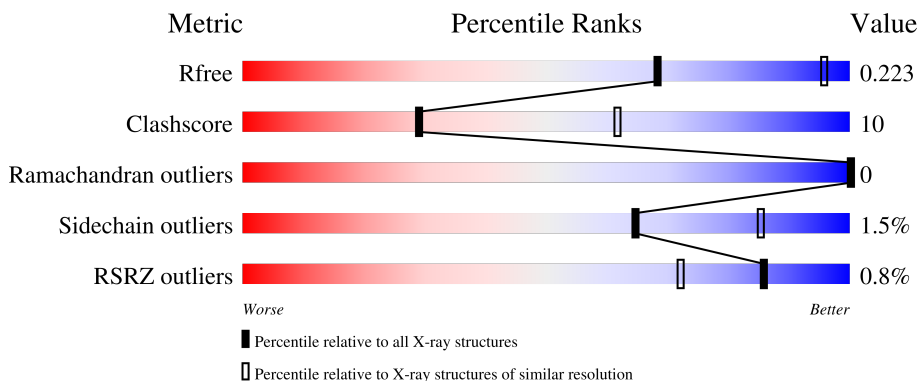
1 Overall quality at a glance

The following experimental techniques were used to determine the structure:

X-RAY DIFFRACTION

The reported resolution of this entry is 3.10 Å.

Percentile scores (ranging between 0-100) for global validation metrics of the entry are shown in the following graphic. The table shows the number of entries on which the scores are based.



Metric	Whole archive (#Entries)	Similar resolution (#Entries, resolution range(Å))
R_{free}	130704	1094 (3.10-3.10)
Clashscore	141614	1184 (3.10-3.10)
Ramachandran outliers	138981	1141 (3.10-3.10)
Sidechain outliers	138945	1141 (3.10-3.10)
RSRZ outliers	127900	1067 (3.10-3.10)

The table below summarises the geometric issues observed across the polymeric chains and their fit to the electron density. The red, orange, yellow and green segments of the lower bar indicate the fraction of residues that contain outliers for ≥ 3 , 2, 1 and 0 types of geometric quality criteria respectively. A grey segment represents the fraction of residues that are not modelled. The numeric value for each fraction is indicated below the corresponding segment, with a dot representing fractions $\leq 5\%$. The upper red bar (where present) indicates the fraction of residues that have poor fit to the electron density. The numeric value is given above the bar.

Mol	Chain	Length	Quality of chain
1	A	317	
1	B	317	
1	C	317	
1	D	317	
1	E	317	

The following table lists non-polymeric compounds, carbohydrate monomers and non-standard residues in protein, DNA, RNA chains that are outliers for geometric or electron-density-fit criteria:

Mol	Type	Chain	Res	Chirality	Geometry	Clashes	Electron density
2	LMT	E	402	-	-	-	X
4	CL	B	503	-	-	-	X
5	NA	E	405	-	-	-	X
6	PLC	A	507	-	-	-	X
6	PLC	A	508	-	-	-	X
6	PLC	B	506	-	-	-	X
6	PLC	B	507	-	-	-	X
6	PLC	B	508	-	-	-	X
6	PLC	C	406	-	-	-	X
6	PLC	D	407	-	-	-	X
6	PLC	E	407	-	-	-	X
7	PFL	A	510	-	-	X	-
7	PFL	A	511	-	-	X	-
7	PFL	B	510	-	-	X	-
7	PFL	C	408	-	-	X	-
7	PFL	E	409	-	-	X	-

2 Entry composition [i](#)

There are 8 unique types of molecules in this entry. The entry contains 13400 atoms, of which 0 are hydrogens and 0 are deuteriums.

In the tables below, the ZeroOcc column contains the number of atoms modelled with zero occupancy, the AltConf column contains the number of residues with at least one atom in alternate conformation and the Trace column contains the number of residues modelled with at most 2 atoms.

- Molecule 1 is a protein called Proton-gated ion channel.

Mol	Chain	Residues	Atoms					ZeroOcc	AltConf	Trace
			Total	C	N	O	S			
1	A	311	2534	1668	406	456	4	0	2	0
1	B	311	2525	1662	404	455	4	0	1	0
1	C	311	2525	1662	404	455	4	0	1	0
1	D	311	2533	1666	406	457	4	0	2	0
1	E	311	2536	1671	405	456	4	0	2	0

There are 10 discrepancies between the modelled and reference sequences:

Chain	Residue	Modelled	Actual	Comment	Reference
A	238	ALA	PHE	engineered mutation	UNP Q7NDN8
A	239	ALA	ASN	engineered mutation	UNP Q7NDN8
B	238	ALA	PHE	engineered mutation	UNP Q7NDN8
B	239	ALA	ASN	engineered mutation	UNP Q7NDN8
C	238	ALA	PHE	engineered mutation	UNP Q7NDN8
C	239	ALA	ASN	engineered mutation	UNP Q7NDN8
D	238	ALA	PHE	engineered mutation	UNP Q7NDN8
D	239	ALA	ASN	engineered mutation	UNP Q7NDN8
E	238	ALA	PHE	engineered mutation	UNP Q7NDN8
E	239	ALA	ASN	engineered mutation	UNP Q7NDN8

- Molecule 2 is DODECYL-BETA-D-MALTOSE (three-letter code: LMT) (formula: C₂₄H₄₆O₁₁).



Mol	Chain	Residues	Atoms		ZeroOcc	AltConf
2	A	1	Total	C O	0	0
			14	13 1		
2	B	1	Total	C O	0	0
			14	13 1		
2	C	1	Total	C O	0	0
			14	13 1		
2	D	1	Total	C O	0	0
			14	13 1		
2	E	1	Total	C	0	0
			12	12		
2	E	1	Total	C O	0	0
			14	13 1		

- Molecule 3 is ACETATE ION (three-letter code: ACT) (formula: $C_2H_3O_2$).



Mol	Chain	Residues	Atoms	ZeroOcc	AltConf
3	A	1	Total C O 4 2 2	0	0
3	A	1	Total C O 4 2 2	0	0
3	B	1	Total C O 4 2 2	0	0
3	B	1	Total C O 4 2 2	0	0
3	B	1	Total C O 4 2 2	0	0
3	C	1	Total C O 4 2 2	0	0
3	D	1	Total C O 4 2 2	0	0
3	D	1	Total C O 4 2 2	0	0
3	D	1	Total C O 4 2 2	0	0
3	E	1	Total C O 4 2 2	0	0

- Molecule 4 is CHLORIDE ION (three-letter code: CL) (formula: Cl).

Mol	Chain	Residues	Atoms	ZeroOcc	AltConf
4	A	1	Total Cl 1 1	0	0
4	B	1	Total Cl 1 1	0	0

Continued on next page...

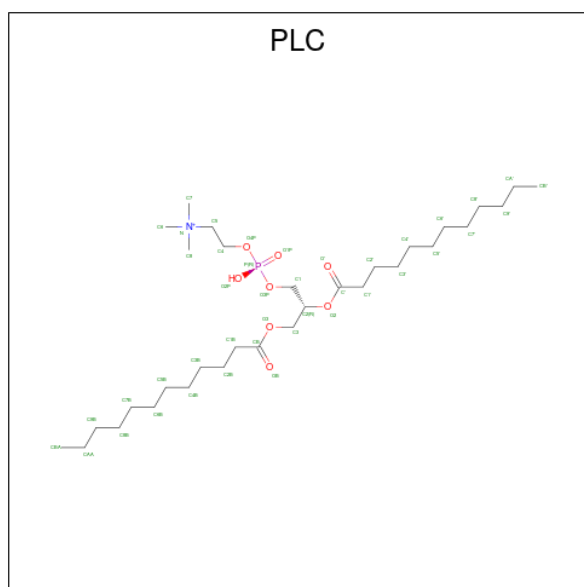
Continued from previous page...

Mol	Chain	Residues	Atoms	ZeroOcc	AltConf
4	C	1	Total Cl 1 1	0	0
4	D	1	Total Cl 1 1	0	0
4	E	1	Total Cl 1 1	0	0

- Molecule 5 is SODIUM ION (three-letter code: NA) (formula: Na).

Mol	Chain	Residues	Atoms	ZeroOcc	AltConf
5	A	2	Total Na 2 2	0	0
5	B	1	Total Na 1 1	0	0
5	C	1	Total Na 1 1	0	0
5	D	1	Total Na 1 1	0	0
5	E	2	Total Na 2 2	0	0

- Molecule 6 is DIUNDECYL PHOSPHATIDYL CHOLINE (three-letter code: PLC) (formula: C₃₂H₆₅NO₈P).



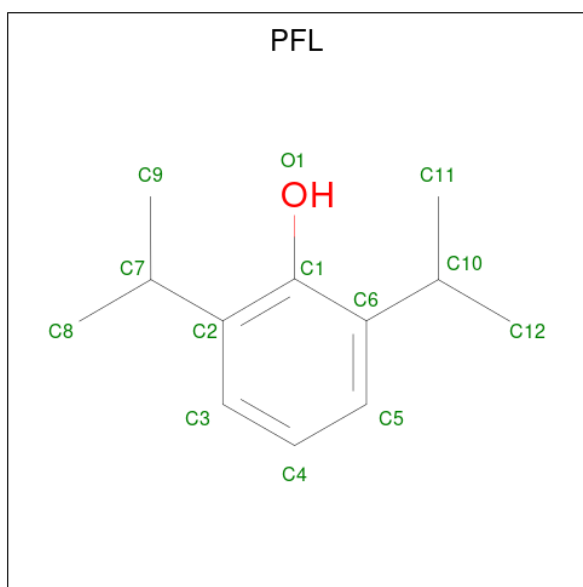
Mol	Chain	Residues	Atoms	ZeroOcc	AltConf
6	A	1	Total C N O P 34 24 1 8 1	0	0

Continued on next page...

Continued from previous page...

Mol	Chain	Residues	Atoms	ZeroOcc	AltConf
6	A	1	Total C 24 24	0	0
6	A	1	Total C 12 12	0	0
6	B	1	Total C N O P 34 24 1 8 1	0	0
6	B	1	Total C 24 24	0	0
6	B	1	Total C 12 12	0	0
6	C	1	Total C N O P 34 24 1 8 1	0	0
6	C	1	Total C 24 24	0	0
6	C	1	Total C 12 12	0	0
6	D	1	Total C N O P 34 24 1 8 1	0	0
6	D	1	Total C 24 24	0	0
6	D	1	Total C 12 12	0	0
6	E	1	Total C N O P 34 24 1 8 1	0	0
6	E	1	Total C 24 24	0	0
6	E	1	Total C 12 12	0	0

- Molecule 7 is 2,6-BIS(1-METHYLETHYL)PHENOL (three-letter code: PFL) (formula: C₁₂H₁₈O).



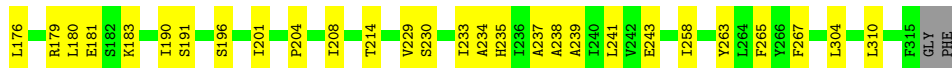
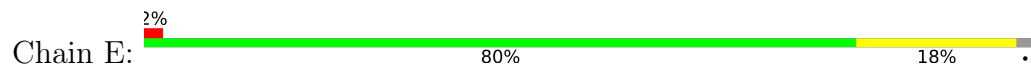
Mol	Chain	Residues	Atoms		ZeroOcc	AltConf
7	A	1	Total	C O	0	0
			13	12 1		
7	A	1	Total	C O	0	0
			13	12 1		
7	B	1	Total	C O	0	0
			13	12 1		
7	C	1	Total	C O	0	0
			13	12 1		
7	E	1	Total	C O	0	0
			13	12 1		

- Molecule 8 is water.

Mol	Chain	Residues	Atoms		ZeroOcc	AltConf
8	A	45	Total	O	0	0
			45	45		
8	B	43	Total	O	0	0
			43	43		
8	C	34	Total	O	0	0
			34	34		
8	D	42	Total	O	0	0
			42	42		
8	E	34	Total	O	0	0
			34	34		



- Molecule 1: Proton-gated ion channel



4 Data and refinement statistics

Property	Value	Source
Space group	C 1 2 1	Depositor
Cell constants a, b, c, α , β , γ	181.76Å 132.51Å 160.52Å 90.00° 102.72° 90.00°	Depositor
Resolution (Å)	20.00 – 3.10 19.97 – 3.10	Depositor EDS
% Data completeness (in resolution range)	98.4 (20.00-3.10) 98.4 (19.97-3.10)	Depositor EDS
R_{merge}	(Not available)	Depositor
R_{sym}	(Not available)	Depositor
$\langle I/\sigma(I) \rangle$ ¹	1.59 (at 3.09Å)	Xtrriage
Refinement program	BUSTER 2.10.2	Depositor
R, R_{free}	0.195 , 0.208 0.212 , 0.223	Depositor DCC
R_{free} test set	3345 reflections (5.06%)	wwPDB-VP
Wilson B-factor (Å ²)	78.5	Xtrriage
Anisotropy	0.275	Xtrriage
Bulk solvent k_{sol} (e/Å ³), B_{sol} (Å ²)	0.33 , 79.2	EDS
L-test for twinning ²	$\langle L \rangle = 0.46$, $\langle L^2 \rangle = 0.29$	Xtrriage
Estimated twinning fraction	No twinning to report.	Xtrriage
F_o, F_c correlation	0.92	EDS
Total number of atoms	13400	wwPDB-VP
Average B, all atoms (Å ²)	81.0	wwPDB-VP

Xtrriage's analysis on translational NCS is as follows: *The largest off-origin peak in the Patterson function is 3.92% of the height of the origin peak. No significant pseudotranslation is detected.*

¹Intensities estimated from amplitudes.

²Theoretical values of $\langle |L| \rangle$, $\langle L^2 \rangle$ for acentric reflections are 0.5, 0.333 respectively for untwinned datasets, and 0.375, 0.2 for perfectly twinned datasets.

5 Model quality [i](#)

5.1 Standard geometry [i](#)

Bond lengths and bond angles in the following residue types are not validated in this section: NA, ACT, LMT, CL, PFL, PLC

The Z score for a bond length (or angle) is the number of standard deviations the observed value is removed from the expected value. A bond length (or angle) with $|Z| > 5$ is considered an outlier worth inspection. RMSZ is the root-mean-square of all Z scores of the bond lengths (or angles).

Mol	Chain	Bond lengths		Bond angles	
		RMSZ	# Z >5	RMSZ	# Z >5
1	A	0.50	0/2601	0.68	0/3555
1	B	0.51	0/2592	0.70	0/3544
1	C	0.50	0/2592	0.69	0/3544
1	D	0.50	0/2600	0.69	0/3555
1	E	0.50	0/2604	0.69	0/3560
All	All	0.50	0/12989	0.69	0/17758

There are no bond length outliers.

There are no bond angle outliers.

There are no chirality outliers.

There are no planarity outliers.

5.2 Too-close contacts [i](#)

In the following table, the Non-H and H(model) columns list the number of non-hydrogen atoms and hydrogen atoms in the chain respectively. The H(added) column lists the number of hydrogen atoms added and optimized by MolProbity. The Clashes column lists the number of clashes within the asymmetric unit, whereas Symm-Clashes lists symmetry-related clashes.

Mol	Chain	Non-H	H(model)	H(added)	Clashes	Symm-Clashes
1	A	2534	0	2557	53	0
1	B	2525	0	2545	80	0
1	C	2525	0	2545	29	0
1	D	2533	0	2550	41	0
1	E	2536	0	2553	67	0
2	A	14	0	25	1	0
2	B	14	0	25	0	0
2	C	14	0	25	2	0

Continued on next page...

Continued from previous page...

Mol	Chain	Non-H	H(model)	H(added)	Clashes	Symm-Clashes
2	D	14	0	25	0	0
2	E	26	0	48	5	0
3	A	8	0	6	1	0
3	B	12	0	9	0	0
3	C	4	0	3	0	0
3	D	12	0	9	0	0
3	E	4	0	3	0	0
4	A	1	0	0	0	0
4	B	1	0	0	0	0
4	C	1	0	0	0	0
4	D	1	0	0	0	0
4	E	1	0	0	0	0
5	A	2	0	0	0	0
5	B	1	0	0	0	0
5	C	1	0	0	0	0
5	D	1	0	0	0	0
5	E	2	0	0	0	0
6	A	70	0	111	1	0
6	B	70	0	111	1	0
6	C	70	0	111	3	0
6	D	70	0	111	1	0
6	E	70	0	111	1	0
7	A	26	0	35	44	0
7	B	13	0	17	27	0
7	C	13	0	17	13	0
7	E	13	0	17	7	0
8	A	45	0	0	7	0
8	B	43	0	0	7	0
8	C	34	0	0	5	0
8	D	42	0	0	3	0
8	E	34	0	0	8	0
All	All	13400	0	13569	256	0

The all-atom clashscore is defined as the number of clashes found per 1000 atoms (including hydrogen atoms). The all-atom clashscore for this structure is 10.

All (256) close contacts within the same asymmetric unit are listed below, sorted by their clash magnitude.

Atom-1	Atom-2	Interatomic distance (Å)	Clash overlap (Å)
1:B:241:LEU:CD2	7:B:510:PFL:H82	1.33	1.55
1:D:207:PHE:HB3	1:E:267[B]:PHE:CE1	1.40	1.55

Continued on next page...

Continued from previous page...

Atom-1	Atom-2	Interatomic distance (Å)	Clash overlap (Å)
6:C:404:PLC:H73	8:C:516:HOH:O	1.15	1.31
1:E:265:PHE:HB3	8:E:518:HOH:O	1.17	1.28
7:A:511:PFL:C11	1:B:243:GLU:HG3	1.67	1.25
1:E:111:LEU:HB2	8:E:501:HOH:O	1.32	1.24
1:A:201:ILE:HD13	7:A:511:PFL:O1	1.11	1.22
1:D:207:PHE:CB	1:E:267[B]:PHE:CE1	2.27	1.17
1:A:201:ILE:CD1	7:A:511:PFL:O1	1.93	1.14
7:A:511:PFL:H111	1:B:243:GLU:OE1	1.44	1.13
1:B:241:LEU:CD2	7:B:510:PFL:C8	2.26	1.13
8:D:538:HOH:O	7:E:409:PFL:H111	1.49	1.10
1:B:241:LEU:HD21	7:B:510:PFL:C8	1.82	1.09
1:D:207:PHE:HB3	1:E:267[B]:PHE:CZ	1.88	1.08
1:C:315:PHE:C	8:C:516:HOH:O	1.95	1.05
1:D:207:PHE:HB3	1:E:267[B]:PHE:CD1	1.92	1.05
7:A:511:PFL:H113	1:B:243:GLU:HG3	1.30	1.04
7:A:510:PFL:H91	8:E:524:HOH:O	1.60	1.00
1:D:207:PHE:CB	1:E:267[B]:PHE:CZ	2.44	1.00
1:B:238:ALA:CB	7:B:510:PFL:H123	1.94	0.98
1:B:241:LEU:CG	7:B:510:PFL:H82	1.94	0.98
1:B:241:LEU:HD21	7:B:510:PFL:H82	0.97	0.96
1:A:243:GLU:CD	7:A:510:PFL:H83	1.84	0.96
7:C:408:PFL:HC5	1:D:239:ALA:CB	1.96	0.95
1:A:248:LYS:HE2	8:A:636:HOH:O	1.66	0.95
1:B:39:VAL:HB	8:B:636:HOH:O	1.68	0.94
1:B:241:LEU:HD23	7:B:510:PFL:H82	1.47	0.94
7:C:408:PFL:C11	1:D:243:GLU:HG3	1.99	0.92
1:B:238:ALA:HB1	7:B:510:PFL:C12	1.99	0.92
1:A:243:GLU:HB3	8:A:629:HOH:O	1.70	0.91
6:C:404:PLC:C7	8:C:516:HOH:O	1.85	0.91
1:E:62:ARG:HH11	1:E:62:ARG:CG	1.83	0.90
1:B:238:ALA:CB	7:B:510:PFL:C12	2.48	0.90
8:A:609:HOH:O	1:E:196:SER:HB3	1.74	0.87
1:E:263:TYR:O	1:E:267[B]:PHE:CD2	2.27	0.87
7:C:408:PFL:H113	1:D:243:GLU:HG3	1.55	0.86
1:E:62:ARG:HH11	1:E:62:ARG:HG3	1.43	0.84
7:A:511:PFL:C11	1:B:243:GLU:CG	2.51	0.84
1:B:37:PHE:CE2	1:B:39:VAL:CG2	2.61	0.84
1:B:239:ALA:O	1:B:243:GLU:HG2	1.78	0.83
1:B:201:ILE:HG12	7:B:510:PFL:HC7	1.59	0.83
7:C:408:PFL:HC5	1:D:239:ALA:HB1	1.61	0.81
7:C:408:PFL:HC5	1:D:239:ALA:HB3	1.62	0.80

Continued on next page...

Continued from previous page...

Atom-1	Atom-2	Interatomic distance (Å)	Clash overlap (Å)
1:A:196:SER:HB3	8:B:634:HOH:O	1.81	0.79
1:A:239:ALA:HB1	7:A:510:PFL:H82	1.65	0.79
7:C:408:PFL:C11	1:D:243:GLU:CG	2.61	0.79
7:A:511:PFL:HC5	1:B:239:ALA:HB3	1.65	0.78
1:B:238:ALA:HB1	7:B:510:PFL:H123	1.63	0.77
1:A:136:ASP:OD1	1:E:63:VAL:HB	1.84	0.77
7:A:511:PFL:HC5	1:B:239:ALA:CB	2.14	0.77
1:D:207:PHE:CD2	1:E:267[B]:PHE:CE2	2.73	0.76
1:B:138:ARG:HB2	8:B:620:HOH:O	1.84	0.76
1:B:37:PHE:HE2	1:B:39:VAL:CG2	1.98	0.75
1:D:207:PHE:HB2	1:E:267[B]:PHE:CZ	2.22	0.75
1:D:10:PRO:HB2	1:D:12:ALA:O	1.86	0.75
1:A:10:PRO:HB2	1:A:12:ALA:O	1.87	0.74
1:B:10:PRO:HB2	1:B:12:ALA:O	1.88	0.74
7:C:408:PFL:H113	1:D:243:GLU:CG	2.18	0.73
1:A:243:GLU:OE1	7:A:510:PFL:H83	1.88	0.72
1:C:10:PRO:HB2	1:C:12:ALA:O	1.89	0.72
1:E:111:LEU:CB	8:E:501:HOH:O	2.09	0.71
1:E:263:TYR:HB3	1:E:267[B]:PHE:HE2	1.55	0.71
1:D:78:PHE:CE2	1:D:85:ARG:HD3	2.25	0.71
1:A:78:PHE:CE2	1:A:85:ARG:HD3	2.26	0.71
1:A:7:PRO:HG3	1:A:135:VAL:HG21	1.72	0.70
1:B:78:PHE:HE2	1:B:85:ARG:HD3	1.56	0.70
1:B:238:ALA:HB1	7:B:510:PFL:H121	1.73	0.70
1:A:131:ILE:HD13	3:A:504:ACT:H2	1.74	0.70
1:C:78:PHE:CE2	1:C:85:ARG:HD3	2.26	0.70
1:B:37:PHE:HE2	1:B:39:VAL:HG21	1.57	0.70
1:B:78:PHE:CE2	1:B:85:ARG:HD3	2.26	0.70
1:C:78:PHE:HE2	1:C:85:ARG:HD3	1.57	0.70
1:E:111:LEU:HD22	8:E:501:HOH:O	1.90	0.69
1:D:207:PHE:HD2	1:E:267[B]:PHE:CE2	2.09	0.69
1:B:7:PRO:HG3	1:B:135:VAL:HG21	1.74	0.69
1:E:77:ARG:O	1:E:131:ILE:HG22	1.92	0.69
7:C:408:PFL:H111	1:D:243:GLU:HG3	1.73	0.68
1:D:7:PRO:HG3	1:D:135:VAL:HG21	1.76	0.68
1:E:78:PHE:CE2	1:E:85:ARG:HD3	2.27	0.68
1:A:204:PRO:HB2	7:A:511:PFL:H82	1.76	0.68
1:D:78:PHE:HE2	1:D:85:ARG:HD3	1.57	0.68
1:A:78:PHE:HE2	1:A:85:ARG:HD3	1.57	0.68
1:A:196:SER:CB	8:B:634:HOH:O	2.37	0.68
1:C:7:PRO:HG3	1:C:135:VAL:HG21	1.73	0.68

Continued on next page...

Continued from previous page...

Atom-1	Atom-2	Interatomic distance (Å)	Clash overlap (Å)
2:C:407:LMT:H92	2:E:401:LMT:H72	1.76	0.68
1:E:78:PHE:HE2	1:E:85:ARG:HD3	1.57	0.68
7:A:511:PFL:H111	1:B:243:GLU:CD	2.12	0.68
1:E:239:ALA:CB	7:E:409:PFL:HC5	2.24	0.68
1:D:5:VAL:HG12	1:D:72:TRP:HB2	1.75	0.67
1:E:239:ALA:HB3	7:E:409:PFL:HC5	1.77	0.67
1:B:37:PHE:CE2	1:B:39:VAL:HG21	2.29	0.67
1:B:238:ALA:CB	7:B:510:PFL:H121	2.23	0.66
1:B:238:ALA:HB2	7:B:510:PFL:C12	2.25	0.66
1:A:239:ALA:CB	7:A:510:PFL:HC3	2.26	0.66
1:A:238:ALA:HB2	7:A:511:PFL:H91	1.78	0.65
1:E:7:PRO:HG3	1:E:135:VAL:HG21	1.78	0.65
1:E:5:VAL:HG12	1:E:72:TRP:HB2	1.77	0.65
7:B:510:PFL:O1	7:B:510:PFL:H122	1.97	0.65
1:C:5:VAL:HG12	1:C:72:TRP:HB2	1.78	0.65
1:E:239:ALA:HB1	7:E:409:PFL:H112	1.78	0.64
1:B:201:ILE:HG23	7:B:510:PFL:O1	1.97	0.64
7:A:510:PFL:H112	1:E:204:PRO:HB2	1.80	0.63
1:B:241:LEU:HD23	7:B:510:PFL:C8	2.13	0.63
1:B:136:ASP:OD1	1:B:179:ARG:NH2	2.33	0.62
1:D:230:SER:CB	1:E:229:VAL:HG11	2.30	0.61
7:A:511:PFL:H112	1:B:243:GLU:HG3	1.78	0.61
1:A:201:ILE:HA	7:A:511:PFL:H83	1.82	0.61
7:A:511:PFL:H112	1:B:239:ALA:HB1	1.81	0.61
1:B:193:GLN:O	8:B:601:HOH:O	2.16	0.60
7:B:510:PFL:C12	7:B:510:PFL:O1	2.50	0.60
1:E:111:LEU:CD2	8:E:501:HOH:O	2.48	0.60
1:A:134:SER:HA	1:A:140:ILE:HD12	1.84	0.59
1:A:236:ILE:HG23	7:A:510:PFL:HC5	1.84	0.59
7:C:408:PFL:H111	1:D:243:GLU:CG	2.31	0.59
1:C:292:THR:HG23	8:C:515:HOH:O	2.03	0.58
7:C:408:PFL:H112	1:D:239:ALA:HB1	1.84	0.58
7:A:510:PFL:H81	8:A:629:HOH:O	2.02	0.58
1:A:244:THR:HG21	2:E:402:LMT:H21	1.86	0.58
1:B:238:ALA:CA	7:B:510:PFL:H123	2.34	0.58
1:E:214:THR:HG22	6:E:407:PLC:H3'1	1.86	0.58
7:A:510:PFL:H113	1:E:201:ILE:HA	1.86	0.58
1:C:134:SER:HA	1:C:140:ILE:HD12	1.86	0.58
1:E:62:ARG:HH11	1:E:62:ARG:HG2	1.65	0.58
1:E:62:ARG:HG3	1:E:62:ARG:NH1	2.14	0.58
7:A:510:PFL:H121	1:E:238:ALA:HB2	1.87	0.57

Continued on next page...

Continued from previous page...

Atom-1	Atom-2	Interatomic distance (Å)	Clash overlap (Å)
1:E:208:ILE:HD11	8:E:507:HOH:O	2.04	0.57
1:B:37:PHE:CE2	1:B:39:VAL:HG23	2.39	0.56
1:E:263:TYR:O	1:E:267[B]:PHE:HD2	1.85	0.55
1:E:37:PHE:CE2	1:E:39:VAL:CG2	2.89	0.54
1:E:134:SER:HA	1:E:140:ILE:HD12	1.89	0.54
1:B:230:SER:CB	1:C:229:VAL:HG11	2.38	0.54
1:D:176:LEU:HB3	1:D:181:GLU:HG3	1.90	0.54
1:A:237:ALA:HA	2:A:501:LMT:H92	1.90	0.54
1:B:134:SER:HA	1:B:140:ILE:HD12	1.90	0.54
7:C:408:PFL:C11	1:D:243:GLU:HG2	2.37	0.54
1:B:241:LEU:HD21	7:B:510:PFL:C7	2.38	0.53
1:B:241:LEU:CG	7:B:510:PFL:C8	2.76	0.53
1:B:201:ILE:HG12	7:B:510:PFL:C7	2.33	0.53
1:D:5:VAL:CG1	1:D:72:TRP:HB2	2.39	0.53
1:D:230:SER:HB3	1:E:229:VAL:CG1	2.38	0.53
1:B:201:ILE:CG1	7:B:510:PFL:HC7	2.35	0.53
1:A:239:ALA:HB3	7:A:510:PFL:HC3	1.90	0.53
1:D:134:SER:HA	1:D:140:ILE:HD12	1.91	0.53
7:A:511:PFL:HC3	1:B:236:ILE:HG23	1.91	0.52
1:A:61:VAL:HG12	1:A:63:VAL:H	1.75	0.52
1:D:207:PHE:C	1:E:267[B]:PHE:CE1	2.83	0.52
7:A:510:PFL:H92	1:E:204:PRO:HG2	1.92	0.52
1:E:12:ALA:O	1:E:13:ASP:HB3	2.09	0.52
1:A:230:SER:CB	1:B:229:VAL:HG11	2.40	0.52
1:B:258:ILE:HD13	1:B:310:LEU:HD13	1.92	0.51
1:E:208:ILE:HD13	1:E:234:ALA:HB3	1.92	0.51
1:C:208:ILE:HD13	1:C:234:ALA:HB3	1.91	0.51
1:A:263:TYR:HE2	7:A:510:PFL:H93	1.74	0.51
7:A:511:PFL:H111	1:B:243:GLU:CG	2.34	0.51
1:E:258:ILE:HD13	1:E:310:LEU:HD13	1.93	0.51
1:B:205:MET:HE2	1:B:238:ALA:HB1	1.92	0.51
1:C:258:ILE:HD13	1:C:310:LEU:HD13	1.92	0.51
1:A:258:ILE:HD13	1:A:310:LEU:HD13	1.91	0.51
7:A:511:PFL:HC5	1:B:239:ALA:HB1	1.92	0.50
1:C:27:CYS:HB3	1:C:157:LEU:HD13	1.93	0.50
1:D:207:PHE:C	1:E:267[B]:PHE:HE1	2.15	0.50
1:A:263:TYR:CE2	7:A:510:PFL:H93	2.45	0.50
1:D:258:ILE:HD13	1:D:310:LEU:HD13	1.93	0.50
1:A:5:VAL:HG22	1:A:72:TRP:HB2	1.94	0.50
1:C:5:VAL:CG1	1:C:72:TRP:HB2	2.41	0.49
1:A:241:LEU:HD22	1:B:240:ILE:HG12	1.95	0.49

Continued on next page...

Continued from previous page...

Atom-1	Atom-2	Interatomic distance (Å)	Clash overlap (Å)
1:E:263:TYR:HE2	7:E:409:PFL:H123	1.78	0.49
1:C:82:GLU:HG3	1:C:109:ARG:HB3	1.94	0.49
8:D:511:HOH:O	7:E:409:PFL:H121	2.12	0.49
1:E:173:ASN:HB3	1:E:180:LEU:HD11	1.95	0.49
1:E:5:VAL:CG1	1:E:72:TRP:HB2	2.41	0.48
7:A:510:PFL:C8	8:A:629:HOH:O	2.59	0.48
1:C:201:ILE:HA	7:C:408:PFL:HC7	1.95	0.48
1:C:176:LEU:HB3	1:C:181:GLU:HG3	1.96	0.48
1:C:196:SER:HB3	8:D:517:HOH:O	2.13	0.48
1:B:241:LEU:HG	7:B:510:PFL:C8	2.43	0.48
1:E:237:ALA:HA	2:E:402:LMT:H92	1.95	0.48
1:A:196:SER:HA	8:B:634:HOH:O	2.13	0.48
1:A:236:ILE:O	7:A:510:PFL:HC4	2.14	0.48
1:A:229:VAL:HG11	1:E:230:SER:CB	2.43	0.48
1:B:63:VAL:HG21	1:C:136:ASP:OD2	2.14	0.48
1:C:292:THR:CG2	8:C:515:HOH:O	2.61	0.47
1:E:176:LEU:HB3	1:E:181:GLU:HG3	1.96	0.47
1:E:263:TYR:O	1:E:267[B]:PHE:CE2	2.67	0.47
1:B:131:ILE:HD12	1:B:183:LYS:HB2	1.95	0.47
1:D:230:SER:CB	1:E:229:VAL:CG1	2.93	0.47
1:B:208:ILE:HD13	1:B:234:ALA:HB3	1.96	0.47
1:D:131:ILE:HD12	1:D:183:LYS:HB2	1.97	0.47
1:B:148:LYS:HE3	1:C:177:GLU:HB3	1.97	0.47
1:A:151:LYS:NZ	8:A:604:HOH:O	2.47	0.46
1:B:28:TYR:HA	1:B:157:LEU:HD12	1.97	0.46
1:E:27:CYS:HB3	1:E:157:LEU:HD13	1.97	0.46
1:A:82:GLU:HG3	1:A:109:ARG:HB3	1.97	0.46
1:E:136:ASP:OD2	1:E:179:ARG:NH2	2.48	0.46
2:E:401:LMT:H42	2:E:402:LMT:H62	1.97	0.46
1:A:141:VAL:HG12	8:A:613:HOH:O	2.15	0.46
1:A:173:ASN:HB3	1:A:180:LEU:HD11	1.96	0.46
1:B:238:ALA:HA	7:B:510:PFL:H123	1.98	0.46
7:A:511:PFL:C11	1:B:243:GLU:CD	2.80	0.45
1:E:7:PRO:CG	1:E:137:THR:OG1	2.64	0.45
1:B:160:TRP:CE3	1:B:190:ILE:HD12	2.51	0.45
2:C:407:LMT:H72	2:E:401:LMT:H52	1.98	0.45
1:A:239:ALA:HB1	7:A:510:PFL:HC3	1.97	0.45
1:A:238:ALA:HB2	7:A:511:PFL:C9	2.45	0.45
1:B:123:SER:HA	1:B:191:SER:HA	1.99	0.44
1:C:7:PRO:CG	1:C:137:THR:OG1	2.66	0.44
1:C:26[B]:GLU:HB2	1:C:40:ASN:HB3	1.98	0.44

Continued on next page...

Continued from previous page...

Atom-1	Atom-2	Interatomic distance (Å)	Clash overlap (Å)
1:B:173:ASN:HB3	1:B:180:LEU:HD11	1.99	0.44
1:C:230:SER:CB	1:D:229:VAL:HG11	2.48	0.44
7:C:408:PFL:H123	1:D:263:TYR:HE2	1.83	0.44
1:B:7:PRO:CG	1:B:137:THR:OG1	2.66	0.44
1:D:82:GLU:HG3	1:D:109:ARG:HB3	1.99	0.44
1:B:176:LEU:HB3	1:B:181:GLU:HG3	1.99	0.44
1:A:26[B]:GLU:HB2	1:A:40:ASN:HB3	1.99	0.44
1:A:232:LEU:HD21	1:E:208:ILE:HG22	1.99	0.44
1:A:240:ILE:HG13	7:A:510:PFL:C4	2.48	0.44
1:A:236:ILE:HG23	7:A:510:PFL:C5	2.46	0.43
1:B:214:THR:HG22	6:B:507:PLC:H3'1	1.99	0.43
1:D:214:THR:HG22	6:D:407:PLC:H3'1	2.00	0.43
1:E:239:ALA:HB1	7:E:409:PFL:HC5	1.99	0.43
1:C:214:THR:HG22	6:C:405:PLC:H3'1	2.00	0.43
1:A:200:ASN:O	7:A:511:PFL:H10	2.18	0.43
1:C:123:SER:HA	1:C:191:SER:HA	2.01	0.43
1:A:214:THR:HG22	6:A:507:PLC:H3'1	2.01	0.42
1:A:61:VAL:CG1	1:A:63:VAL:O	2.67	0.42
1:B:238:ALA:HB2	7:B:510:PFL:H123	1.86	0.42
1:E:123:SER:HA	1:E:191:SER:HA	2.01	0.42
1:C:173:ASN:HB3	1:C:180:LEU:HD11	2.01	0.42
1:A:240:ILE:HG12	1:E:241:LEU:HD22	2.01	0.42
1:B:239:ALA:O	1:B:243:GLU:CG	2.60	0.42
1:B:53:ALA:HA	1:B:96:PRO:O	2.19	0.42
1:B:230:SER:HB3	1:C:229:VAL:CG1	2.49	0.42
1:A:123:SER:HA	1:A:191:SER:HA	2.02	0.42
7:A:511:PFL:H113	1:B:243:GLU:CG	2.23	0.42
1:B:243:GLU:HG2	1:B:243:GLU:H	1.72	0.42
1:D:123:SER:HA	1:D:191:SER:HA	2.01	0.42
1:B:37:PHE:CD2	1:B:39:VAL:HG23	2.54	0.42
1:E:55:ASP:O	1:E:59:SER:HB2	2.19	0.42
1:A:24:LEU:HD22	1:A:39:VAL:CG2	2.50	0.41
7:A:511:PFL:HC4	1:B:236:ILE:O	2.20	0.41
7:A:511:PFL:C11	1:B:243:GLU:OE1	2.37	0.41
1:E:160:TRP:CE3	1:E:190:ILE:HD12	2.55	0.41
7:A:511:PFL:C4	1:B:240:ILE:HG13	2.50	0.41
1:D:7:PRO:CG	1:D:137:THR:OG1	2.68	0.41
1:D:207:PHE:CD2	1:E:267[B]:PHE:CZ	3.08	0.41
1:A:204:PRO:HG2	7:A:511:PFL:H122	2.02	0.41
1:E:7:PRO:HG2	1:E:137:THR:OG1	2.21	0.41
1:E:131:ILE:HD12	1:E:183:LYS:HB2	2.03	0.41

Continued on next page...

Continued from previous page...

Atom-1	Atom-2	Interatomic distance (Å)	Clash overlap (Å)
1:E:235:HIS:HB2	8:E:507:HOH:O	2.21	0.41
1:B:201:ILE:HG12	7:B:510:PFL:C8	2.50	0.41
1:E:130:LEU:HD23	1:E:130:LEU:HA	1.93	0.41
1:B:126:LEU:HA	8:B:609:HOH:O	2.20	0.40
1:A:82:GLU:HG3	1:A:109:ARG:HD3	2.02	0.40
1:A:230:SER:HB3	1:B:229:VAL:CG1	2.51	0.40
1:C:233:ILE:HA	1:C:236:ILE:HD12	2.03	0.40
1:C:7:PRO:HG2	1:C:137:THR:OG1	2.21	0.40

There are no symmetry-related clashes.

5.3 Torsion angles [i](#)

5.3.1 Protein backbone [i](#)

In the following table, the Percentiles column shows the percent Ramachandran outliers of the chain as a percentile score with respect to all X-ray entries followed by that with respect to entries of similar resolution.

The Analysed column shows the number of residues for which the backbone conformation was analysed, and the total number of residues.

Mol	Chain	Analysed	Favoured	Allowed	Outliers	Percentiles	
1	A	311/317 (98%)	298 (96%)	13 (4%)	0	100	100
1	B	310/317 (98%)	300 (97%)	10 (3%)	0	100	100
1	C	310/317 (98%)	299 (96%)	11 (4%)	0	100	100
1	D	311/317 (98%)	301 (97%)	10 (3%)	0	100	100
1	E	311/317 (98%)	301 (97%)	10 (3%)	0	100	100
All	All	1553/1585 (98%)	1499 (96%)	54 (4%)	0	100	100

There are no Ramachandran outliers to report.

5.3.2 Protein sidechains [i](#)

In the following table, the Percentiles column shows the percent sidechain outliers of the chain as a percentile score with respect to all X-ray entries followed by that with respect to entries of similar resolution.

The Analysed column shows the number of residues for which the sidechain conformation was

analysed, and the total number of residues.

Mol	Chain	Analysed	Rotameric	Outliers	Percentiles	
1	A	280/282 (99%)	276 (99%)	4 (1%)	67	86
1	B	279/282 (99%)	277 (99%)	2 (1%)	84	93
1	C	279/282 (99%)	275 (99%)	4 (1%)	67	86
1	D	280/282 (99%)	275 (98%)	5 (2%)	59	82
1	E	280/282 (99%)	274 (98%)	6 (2%)	53	79
All	All	1398/1410 (99%)	1377 (98%)	21 (2%)	65	85

All (21) residues with a non-rotameric sidechain are listed below:

Mol	Chain	Res	Type
1	A	208	ILE
1	A	233	ILE
1	A	245	ASN
1	A	304	LEU
1	B	17	THR
1	B	304	LEU
1	C	17	THR
1	C	27	CYS
1	C	208	ILE
1	C	304	LEU
1	D	17	THR
1	D	39	VAL
1	D	131	ILE
1	D	233	ILE
1	D	304	LEU
1	E	17	THR
1	E	62	ARG
1	E	147	GLU
1	E	233	ILE
1	E	243	GLU
1	E	304	LEU

Sometimes sidechains can be flipped to improve hydrogen bonding and reduce clashes. All (1) such sidechains are listed below:

Mol	Chain	Res	Type
1	D	83	ASN

5.3.3 RNA [i](#)

There are no RNA molecules in this entry.

5.4 Non-standard residues in protein, DNA, RNA chains [i](#)

There are no non-standard protein/DNA/RNA residues in this entry.

5.5 Carbohydrates [i](#)

There are no monosaccharides in this entry.

5.6 Ligand geometry [i](#)

Of 48 ligands modelled in this entry, 12 are monoatomic - leaving 36 for Mogul analysis.

In the following table, the Counts columns list the number of bonds (or angles) for which Mogul statistics could be retrieved, the number of bonds (or angles) that are observed in the model and the number of bonds (or angles) that are defined in the Chemical Component Dictionary. The Link column lists molecule types, if any, to which the group is linked. The Z score for a bond length (or angle) is the number of standard deviations the observed value is removed from the expected value. A bond length (or angle) with $|Z| > 2$ is considered an outlier worth inspection. RMSZ is the root-mean-square of all Z scores of the bond lengths (or angles).

Mol	Type	Chain	Res	Link	Bond lengths			Bond angles		
					Counts	RMSZ	# Z > 2	Counts	RMSZ	# Z > 2
6	PLC	A	507	-	22,22,41	0.54	0	20,20,49	0.54	0
2	LMT	B	501	-	13,13,36	0.61	0	12,12,47	0.88	1 (8%)
3	ACT	B	502	-	3,3,3	0.98	0	3,3,3	1.02	0
6	PLC	B	507	-	22,22,41	0.56	0	20,20,49	0.48	0
3	ACT	D	409	-	3,3,3	1.47	0	3,3,3	0.54	0
7	PFL	E	409	-	13,13,13	0.21	0	18,18,18	0.50	0
2	LMT	C	407	-	13,13,36	0.69	0	12,12,47	0.59	0
7	PFL	A	510	-	13,13,13	0.33	0	18,18,18	0.76	0
6	PLC	C	406	-	11,11,41	0.43	0	10,10,49	0.68	0
6	PLC	C	405	-	22,22,41	0.60	0	20,20,49	0.46	0
7	PFL	C	408	-	13,13,13	0.28	0	18,18,18	0.49	0
2	LMT	A	501	-	13,13,36	0.67	0	12,12,47	0.50	0
6	PLC	C	404	-	33,33,41	1.00	2 (6%)	39,41,49	1.14	3 (7%)
3	ACT	E	403	-	3,3,3	0.96	0	3,3,3	0.77	0
6	PLC	B	508	-	11,11,41	0.46	0	10,10,49	0.62	0
3	ACT	D	404	-	3,3,3	1.32	0	3,3,3	0.58	0
6	PLC	E	407	-	22,22,41	0.61	0	20,20,49	0.51	0

Mol	Type	Chain	Res	Link	Bond lengths			Bond angles		
					Counts	RMSZ	# Z > 2	Counts	RMSZ	# Z > 2
2	LMT	D	401	-	13,13,36	0.77	0	12,12,47	0.50	0
6	PLC	E	406	-	33,33,41	1.06	2 (6%)	39,41,49	1.08	2 (5%)
3	ACT	C	401	-	3,3,3	1.26	0	3,3,3	0.89	0
3	ACT	A	502	-	3,3,3	0.99	0	3,3,3	0.85	0
6	PLC	A	506	-	33,33,41	1.04	2 (6%)	39,41,49	1.07	2 (5%)
6	PLC	B	506	-	33,33,41	1.11	2 (6%)	39,41,49	1.05	2 (5%)
2	LMT	E	402	-	13,13,36	0.76	0	12,12,47	0.49	0
7	PFL	A	511	-	13,13,13	0.51	0	18,18,18	0.65	1 (5%)
2	LMT	E	401	-	11,11,36	0.76	0	10,10,47	0.35	0
7	PFL	B	510	-	13,13,13	0.42	0	18,18,18	0.72	0
6	PLC	D	407	-	22,22,41	0.55	0	20,20,49	0.48	0
6	PLC	D	408	-	11,11,41	0.39	0	10,10,49	0.64	0
3	ACT	B	504	-	3,3,3	1.42	0	3,3,3	0.58	0
6	PLC	D	406	-	33,33,41	1.09	3 (9%)	39,41,49	1.09	2 (5%)
3	ACT	B	509	-	3,3,3	1.46	0	3,3,3	0.41	0
6	PLC	A	508	-	11,11,41	0.45	0	10,10,49	0.62	0
3	ACT	D	402	-	3,3,3	1.25	0	3,3,3	0.69	0
3	ACT	A	504	-	3,3,3	1.26	0	3,3,3	0.43	0
6	PLC	E	408	-	11,11,41	0.44	0	10,10,49	0.61	0

In the following table, the Chirals column lists the number of chiral outliers, the number of chiral centers analysed, the number of these observed in the model and the number defined in the Chemical Component Dictionary. Similar counts are reported in the Torsion and Rings columns. '-' means no outliers of that kind were identified.

Mol	Type	Chain	Res	Link	Chirals	Torsions	Rings
6	PLC	A	507	-	-	6/18/18/45	-
2	LMT	B	501	-	-	2/11/11/61	-
6	PLC	B	507	-	-	6/18/18/45	-
7	PFL	E	409	-	-	0/8/8/8	0/1/1/1
2	LMT	C	407	-	-	0/11/11/61	-
7	PFL	A	510	-	-	3/8/8/8	0/1/1/1
6	PLC	C	406	-	-	1/9/9/45	-
7	PFL	C	408	-	-	0/8/8/8	0/1/1/1
2	LMT	A	501	-	-	1/11/11/61	-
6	PLC	C	404	-	-	23/37/37/45	-
6	PLC	B	508	-	-	1/9/9/45	-
6	PLC	E	407	-	-	8/18/18/45	-
2	LMT	D	401	-	-	0/11/11/61	-
6	PLC	E	406	-	-	20/37/37/45	-

Continued on next page...

Continued from previous page...

Mol	Type	Chain	Res	Link	Chirals	Torsions	Rings
6	PLC	A	506	-	-	20/37/37/45	-
6	PLC	B	506	-	-	22/37/37/45	-
7	PFL	A	511	-	-	3/8/8/8	0/1/1/1
2	LMT	E	401	-	-	0/9/9/61	-
7	PFL	B	510	-	-	6/8/8/8	0/1/1/1
6	PLC	D	407	-	-	8/18/18/45	-
6	PLC	D	408	-	-	0/9/9/45	-
6	PLC	D	406	-	-	21/37/37/45	-
6	PLC	A	508	-	-	1/9/9/45	-
6	PLC	C	405	-	-	6/18/18/45	-
2	LMT	E	402	-	-	1/11/11/61	-
6	PLC	E	408	-	-	1/9/9/45	-

All (11) bond length outliers are listed below:

Mol	Chain	Res	Type	Atoms	Z	Observed(Å)	Ideal(Å)
6	D	406	PLC	O2-C'	3.00	1.42	1.34
6	B	506	PLC	O2-C'	2.89	1.42	1.34
6	E	406	PLC	O2-C'	2.79	1.42	1.34
6	A	506	PLC	O2-C'	2.62	1.41	1.34
6	C	404	PLC	O2-C'	2.52	1.41	1.34
6	B	506	PLC	O3-CB	2.25	1.39	1.33
6	E	406	PLC	C3-C2	2.11	1.57	1.50
6	D	406	PLC	P-O4P	2.07	1.67	1.59
6	C	404	PLC	O3-CB	2.06	1.39	1.33
6	A	506	PLC	O3-CB	2.02	1.39	1.33
6	D	406	PLC	O3-CB	2.00	1.39	1.33

All (13) bond angle outliers are listed below:

Mol	Chain	Res	Type	Atoms	Z	Observed(°)	Ideal(°)
6	D	406	PLC	C2-O2-C'	4.27	128.31	117.79
6	A	506	PLC	C2-O2-C'	3.78	127.10	117.79
6	C	404	PLC	C2-O2-C'	3.78	127.09	117.79
6	B	506	PLC	C2-O2-C'	3.77	127.08	117.79
6	E	406	PLC	C2-O2-C'	3.58	126.61	117.79
6	C	404	PLC	C3-C2-C1	3.44	119.93	111.79
6	E	406	PLC	C3-C2-C1	3.38	119.78	111.79
6	D	406	PLC	C3-C2-C1	3.27	119.51	111.79
6	A	506	PLC	C3-C2-C1	3.20	119.37	111.79

Continued on next page...

Continued from previous page...

Mol	Chain	Res	Type	Atoms	Z	Observed(°)	Ideal(°)
6	B	506	PLC	C3-C2-C1	2.80	118.41	111.79
6	C	404	PLC	C8-N-C7	-2.74	101.93	108.97
2	B	501	LMT	C3-C2-C1	-2.10	104.19	113.49
7	A	511	PFL	O1-C1-C6	-2.02	115.08	120.63

There are no chirality outliers.

All (160) torsion outliers are listed below:

Mol	Chain	Res	Type	Atoms
6	A	506	PLC	C1'-C'-O2-C2
6	A	506	PLC	C1-O3P-P-O1P
6	A	506	PLC	C1-O3P-P-O4P
6	B	506	PLC	C1'-C'-O2-C2
6	B	506	PLC	C1-O3P-P-O1P
6	B	506	PLC	C1-O3P-P-O4P
6	C	404	PLC	C1'-C'-O2-C2
6	C	404	PLC	C1-O3P-P-O2P
6	C	404	PLC	C1-O3P-P-O4P
6	C	404	PLC	C4-O4P-P-O1P
6	C	404	PLC	C4-O4P-P-O3P
6	D	406	PLC	C1'-C'-O2-C2
6	D	406	PLC	C4-O4P-P-O2P
6	D	406	PLC	C4-O4P-P-O3P
6	E	406	PLC	C1'-C'-O2-C2
6	E	406	PLC	C1-O3P-P-O1P
6	E	406	PLC	C1-O3P-P-O4P
7	B	510	PFL	C12-C10-C6-C5
7	B	510	PFL	C12-C10-C6-C1
7	A	510	PFL	C11-C10-C6-C5
7	A	511	PFL	C3-C2-C7-C8
7	B	510	PFL	C3-C2-C7-C8
7	A	510	PFL	C11-C10-C6-C1
7	A	511	PFL	C1-C2-C7-C8
6	A	506	PLC	O'-C'-O2-C2
6	B	506	PLC	O'-C'-O2-C2
6	C	404	PLC	O'-C'-O2-C2
6	D	406	PLC	O'-C'-O2-C2
6	E	406	PLC	O'-C'-O2-C2
7	B	510	PFL	C3-C2-C7-C9
6	A	506	PLC	C4-C5-N-C8
6	E	406	PLC	C4-C5-N-C8
6	D	406	PLC	C'-C1'-C2'-C3'

Continued on next page...

Continued from previous page...

Mol	Chain	Res	Type	Atoms
6	D	406	PLC	CB-C1B-C2B-C3B
6	A	506	PLC	C'-C1'-C2'-C3'
6	A	506	PLC	CB-C1B-C2B-C3B
6	B	506	PLC	C'-C1'-C2'-C3'
6	B	506	PLC	CB-C1B-C2B-C3B
6	E	406	PLC	C'-C1'-C2'-C3'
6	E	406	PLC	CB-C1B-C2B-C3B
6	C	404	PLC	CB-C1B-C2B-C3B
7	B	510	PFL	C1-C2-C7-C8
6	A	506	PLC	C4-O4P-P-O3P
6	B	506	PLC	C4-O4P-P-O3P
6	D	406	PLC	C1-O3P-P-O4P
6	E	406	PLC	C4-O4P-P-O3P
6	C	404	PLC	C'-C1'-C2'-C3'
7	B	510	PFL	C1-C2-C7-C9
6	A	506	PLC	C4-C5-N-C7
6	B	506	PLC	C4-C5-N-C6
6	B	506	PLC	C4-C5-N-C8
6	C	404	PLC	C4-C5-N-C6
6	C	404	PLC	C4-C5-N-C8
6	E	406	PLC	C4-C5-N-C7
6	B	506	PLC	C3B-C4B-C5B-C6B
6	E	407	PLC	C4'-C5'-C6'-C7'
6	C	405	PLC	C1'-C2'-C3'-C4'
6	A	507	PLC	C1'-C2'-C3'-C4'
6	B	507	PLC	C1'-C2'-C3'-C4'
6	D	407	PLC	C1'-C2'-C3'-C4'
6	A	506	PLC	C4-C5-N-C6
6	B	506	PLC	C4-C5-N-C7
6	C	404	PLC	C4-C5-N-C7
6	E	406	PLC	C4-C5-N-C6
6	C	405	PLC	C5B-C6B-C7B-C8B
6	D	406	PLC	C1B-C2B-C3B-C4B
6	B	506	PLC	C1B-C2B-C3B-C4B
6	A	506	PLC	C3B-C4B-C5B-C6B
6	E	406	PLC	C3B-C4B-C5B-C6B
6	C	404	PLC	C3B-C4B-C5B-C6B
6	D	406	PLC	C4-C5-N-C6
6	D	406	PLC	C3B-C4B-C5B-C6B
6	D	406	PLC	C4B-C5B-C6B-C7B
6	E	407	PLC	C'-C1'-C2'-C3'
6	A	506	PLC	O3P-C1-C2-O2

Continued on next page...

Continued from previous page...

Mol	Chain	Res	Type	Atoms
6	D	406	PLC	C4-C5-N-C7
6	A	507	PLC	C6'-C7'-C8'-C9'
6	B	507	PLC	C2'-C3'-C4'-C5'
6	D	406	PLC	C1'-C2'-C3'-C4'
6	D	407	PLC	C2'-C3'-C4'-C5'
6	E	407	PLC	C2'-C3'-C4'-C5'
6	A	507	PLC	C2'-C3'-C4'-C5'
6	C	405	PLC	C2'-C3'-C4'-C5'
6	E	406	PLC	C1B-C2B-C3B-C4B
6	B	507	PLC	C6'-C7'-C8'-C9'
6	A	506	PLC	C1B-C2B-C3B-C4B
6	A	507	PLC	C5B-C6B-C7B-C8B
6	C	404	PLC	O3P-C1-C2-O2
7	A	511	PFL	C3-C2-C7-C9
6	C	405	PLC	C6'-C7'-C8'-C9'
6	B	506	PLC	C1'-C2'-C3'-C4'
6	D	407	PLC	C4'-C5'-C6'-C7'
6	D	406	PLC	C4-C5-N-C8
6	A	506	PLC	C1'-C2'-C3'-C4'
6	B	508	PLC	C1'-C2'-C3'-C4'
6	D	406	PLC	O3P-C1-C2-O2
6	E	406	PLC	O3P-C1-C2-O2
6	C	406	PLC	C1'-C2'-C3'-C4'
6	E	406	PLC	C1'-C2'-C3'-C4'
6	E	408	PLC	C1'-C2'-C3'-C4'
6	B	507	PLC	C5B-C6B-C7B-C8B
6	D	407	PLC	C8'-C9'-CA'-CB'
6	C	405	PLC	C8'-C9'-CA'-CB'
6	A	508	PLC	C1'-C2'-C3'-C4'
6	E	407	PLC	C3'-C4'-C5'-C6'
6	A	506	PLC	C4-O4P-P-O1P
6	B	506	PLC	C4-O4P-P-O1P
6	C	404	PLC	C1-O3P-P-O1P
6	D	406	PLC	C1-O3P-P-O1P
6	D	406	PLC	C4-O4P-P-O1P
6	E	406	PLC	C4-O4P-P-O1P
6	C	404	PLC	C4B-C5B-C6B-C7B
6	B	506	PLC	C4B-C5B-C6B-C7B
7	A	510	PFL	C12-C10-C6-C5
6	A	506	PLC	O4P-C4-C5-N
6	B	506	PLC	O4P-C4-C5-N
6	C	404	PLC	O4P-C4-C5-N

Continued on next page...

Continued from previous page...

Mol	Chain	Res	Type	Atoms
6	D	406	PLC	O4P-C4-C5-N
6	E	406	PLC	O4P-C4-C5-N
6	A	506	PLC	C4B-C5B-C6B-C7B
6	B	507	PLC	C8'-C9'-CA'-CB'
6	A	507	PLC	C4'-C5'-C6'-C7'
6	B	506	PLC	C3-C2-O2-C'
6	E	406	PLC	C3-C2-O2-C'
6	C	404	PLC	O3P-C1-C2-C3
6	C	404	PLC	C1B-C2B-C3B-C4B
6	B	507	PLC	C4'-C5'-C6'-C7'
6	C	405	PLC	C4'-C5'-C6'-C7'
6	E	406	PLC	C4B-C5B-C6B-C7B
6	A	507	PLC	C8'-C9'-CA'-CB'
6	E	407	PLC	C8'-C9'-CA'-CB'
6	D	407	PLC	CB-C1B-C2B-C3B
6	E	407	PLC	C1'-C2'-C3'-C4'
6	C	404	PLC	C1'-C2'-C3'-C4'
2	B	501	LMT	C9-C10-C11-C12
2	B	501	LMT	C11-C10-C9-C8
6	A	506	PLC	C3-C2-O2-C'
6	C	404	PLC	C3-C2-O2-C'
6	D	407	PLC	C5B-C6B-C7B-C8B
6	E	407	PLC	C5'-C6'-C7'-C8'
2	E	402	LMT	C1-C2-C3-C4
6	D	406	PLC	O3P-C1-C2-C3
6	D	407	PLC	C6'-C7'-C8'-C9'
6	E	407	PLC	C5B-C6B-C7B-C8B
6	B	506	PLC	O3P-C1-C2-O2
6	C	404	PLC	C2B-C1B-CB-O3
6	E	406	PLC	C2B-C1B-CB-O3
6	A	506	PLC	C2B-C1B-CB-O3
6	C	404	PLC	C2B-C1B-CB-OB
6	A	506	PLC	C2B-C1B-CB-OB
6	B	506	PLC	C2B-C1B-CB-O3
6	E	406	PLC	C2B-C1B-CB-OB
6	D	407	PLC	C4B-C5B-C6B-C7B
6	B	506	PLC	O2-C'-C1'-C2'
2	A	501	LMT	C1-C2-C3-C4
6	B	506	PLC	C2B-C1B-CB-OB
6	D	406	PLC	C2B-C1B-CB-O3
6	C	404	PLC	O2-C'-C1'-C2'
6	D	406	PLC	O2-C'-C1'-C2'

Continued on next page...

Continued from previous page...

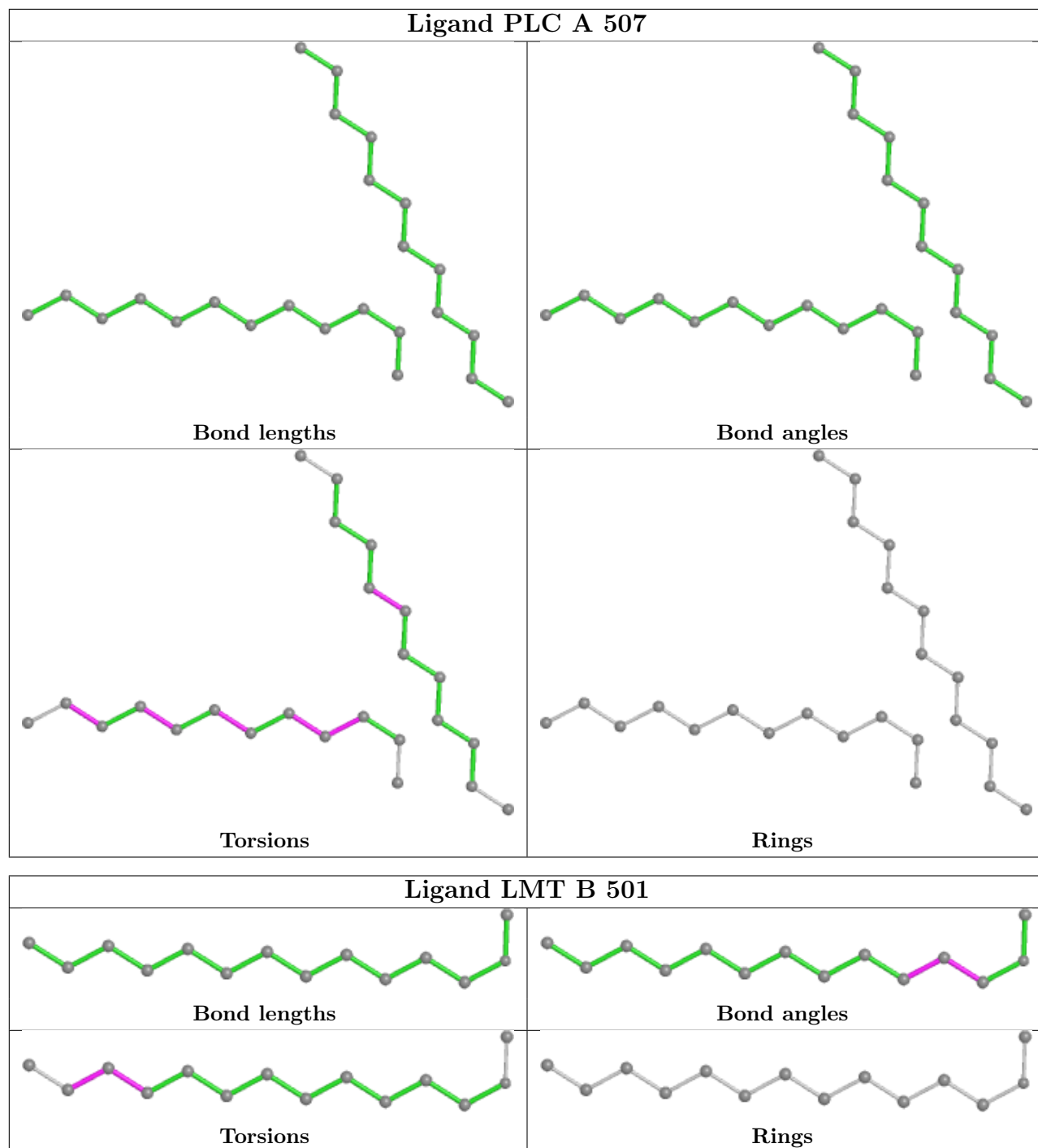
Mol	Chain	Res	Type	Atoms
6	B	506	PLC	O'-C'-C1'-C2'

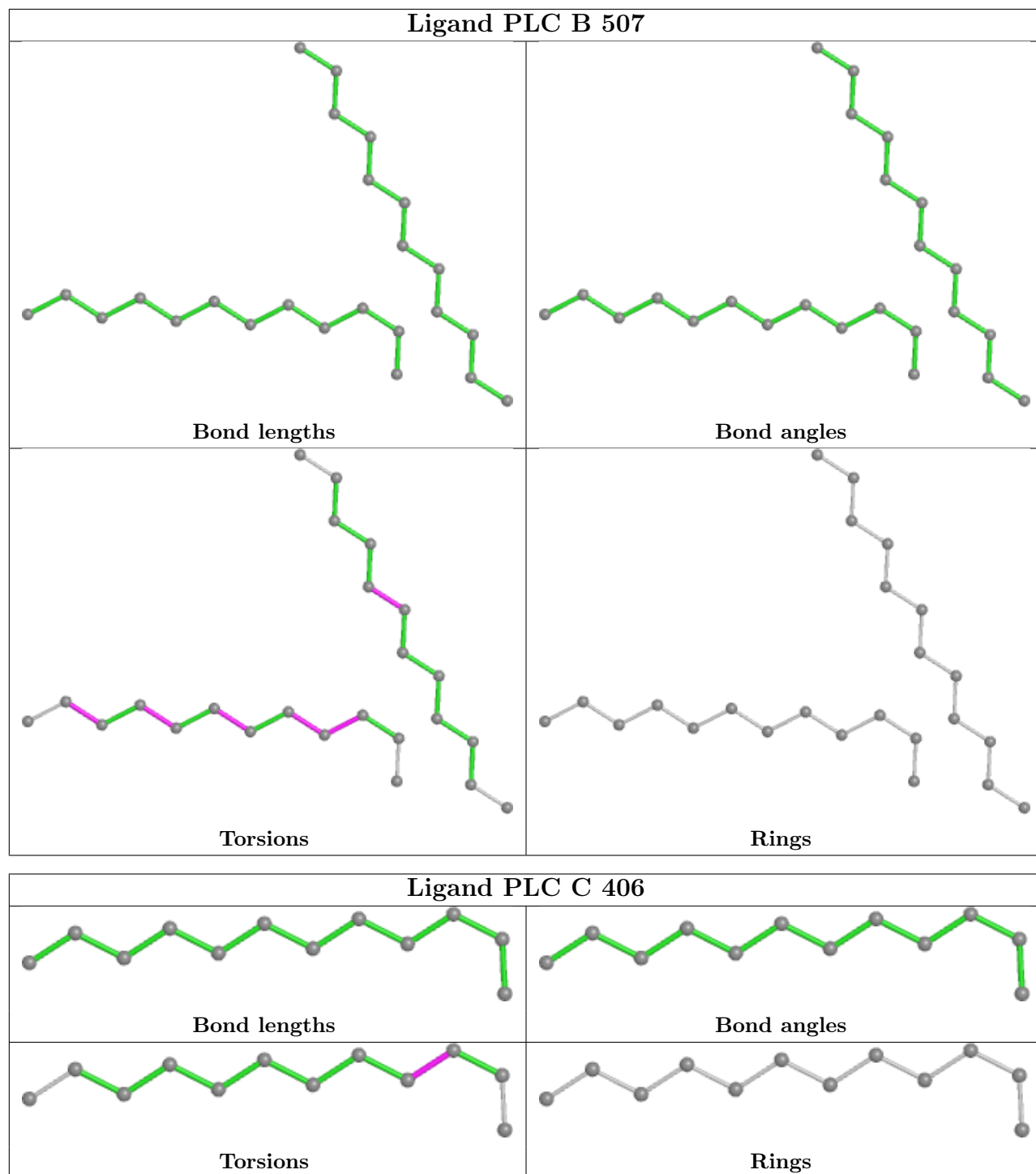
There are no ring outliers.

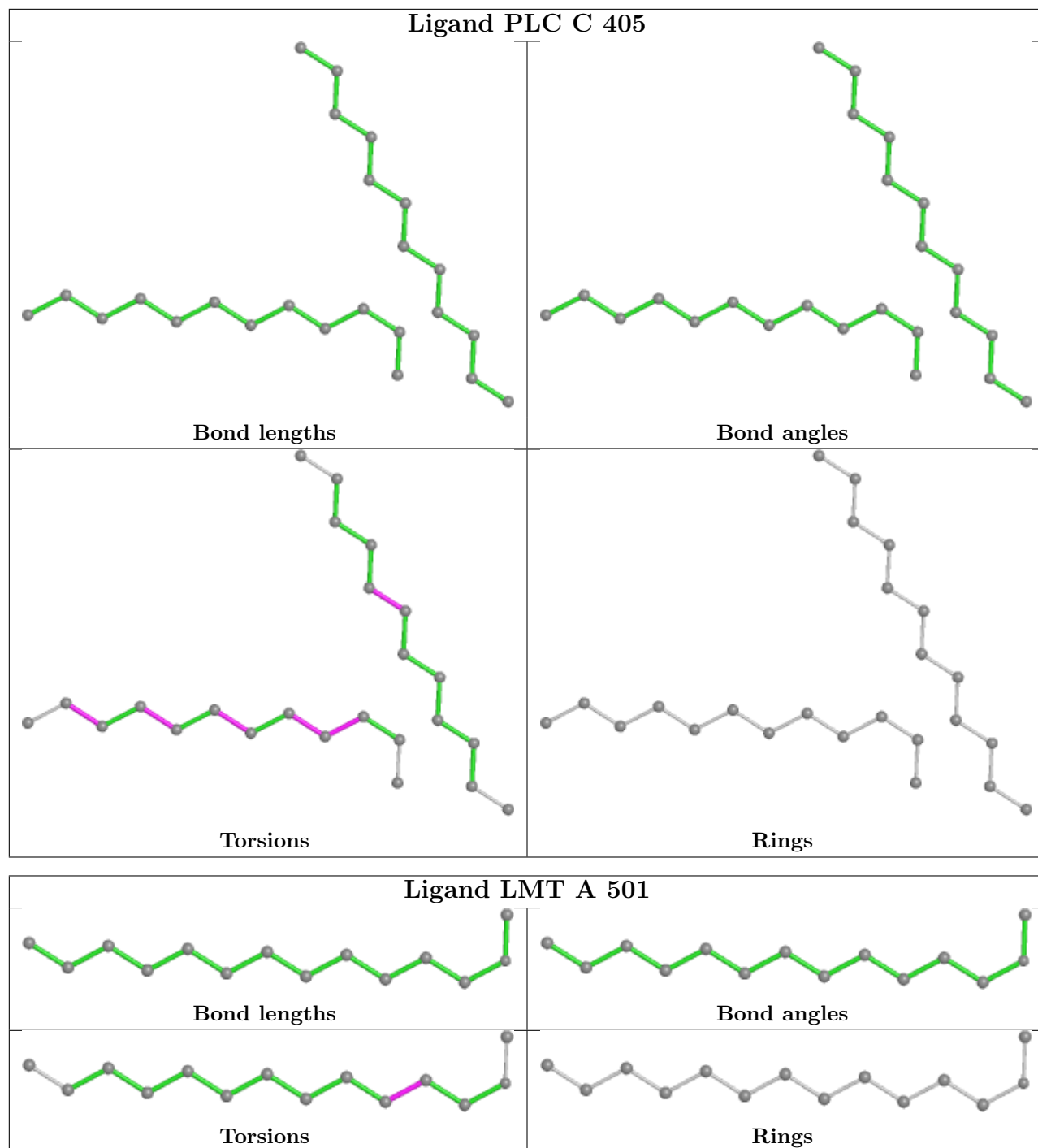
16 monomers are involved in 105 short contacts:

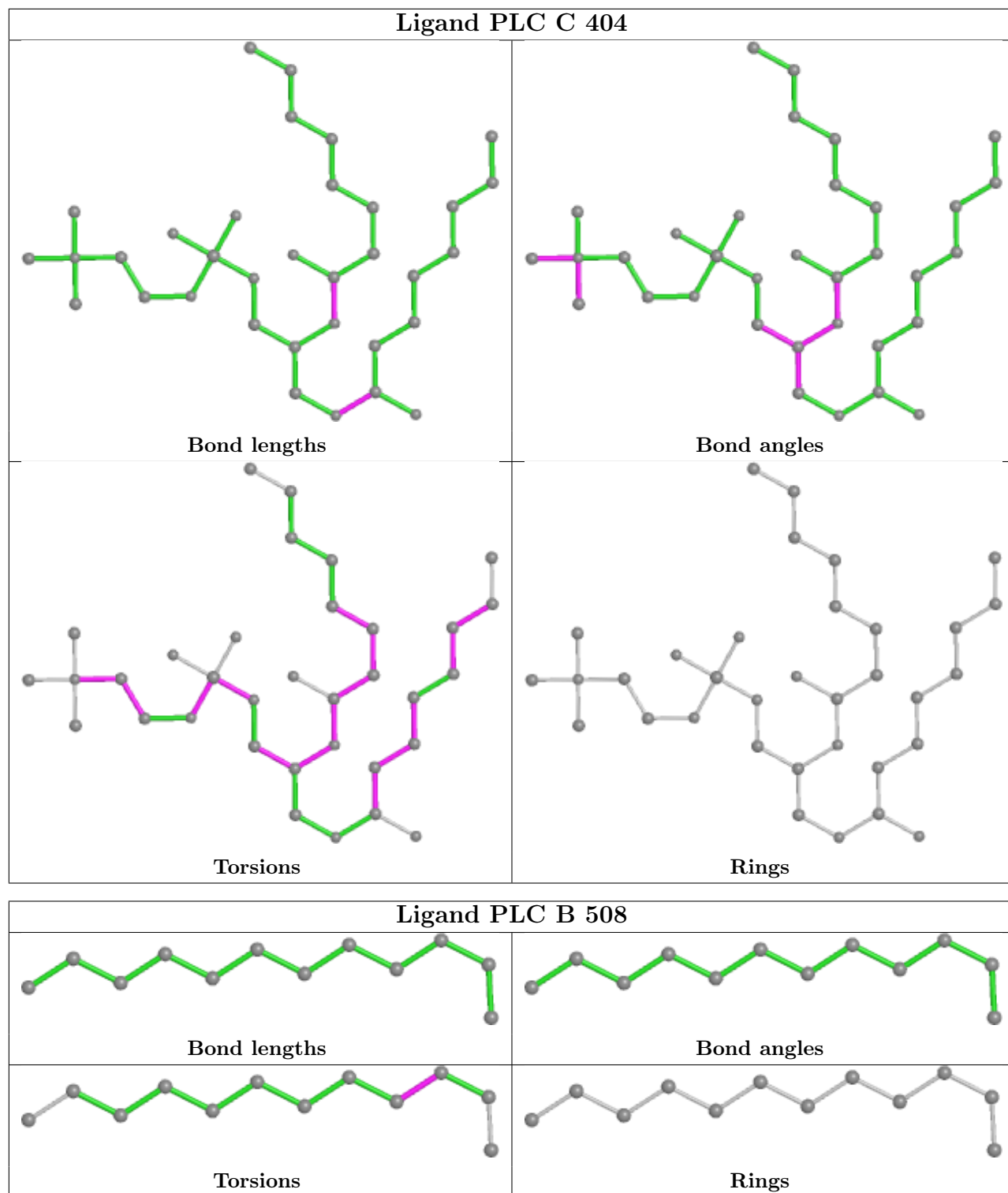
Mol	Chain	Res	Type	Clashes	Symm-Clashes
6	A	507	PLC	1	0
6	B	507	PLC	1	0
7	E	409	PFL	7	0
2	C	407	LMT	2	0
7	A	510	PFL	19	0
6	C	405	PLC	1	0
7	C	408	PFL	13	0
2	A	501	LMT	1	0
6	C	404	PLC	2	0
6	E	407	PLC	1	0
2	E	402	LMT	3	0
7	A	511	PFL	25	0
2	E	401	LMT	3	0
7	B	510	PFL	27	0
6	D	407	PLC	1	0
3	A	504	ACT	1	0

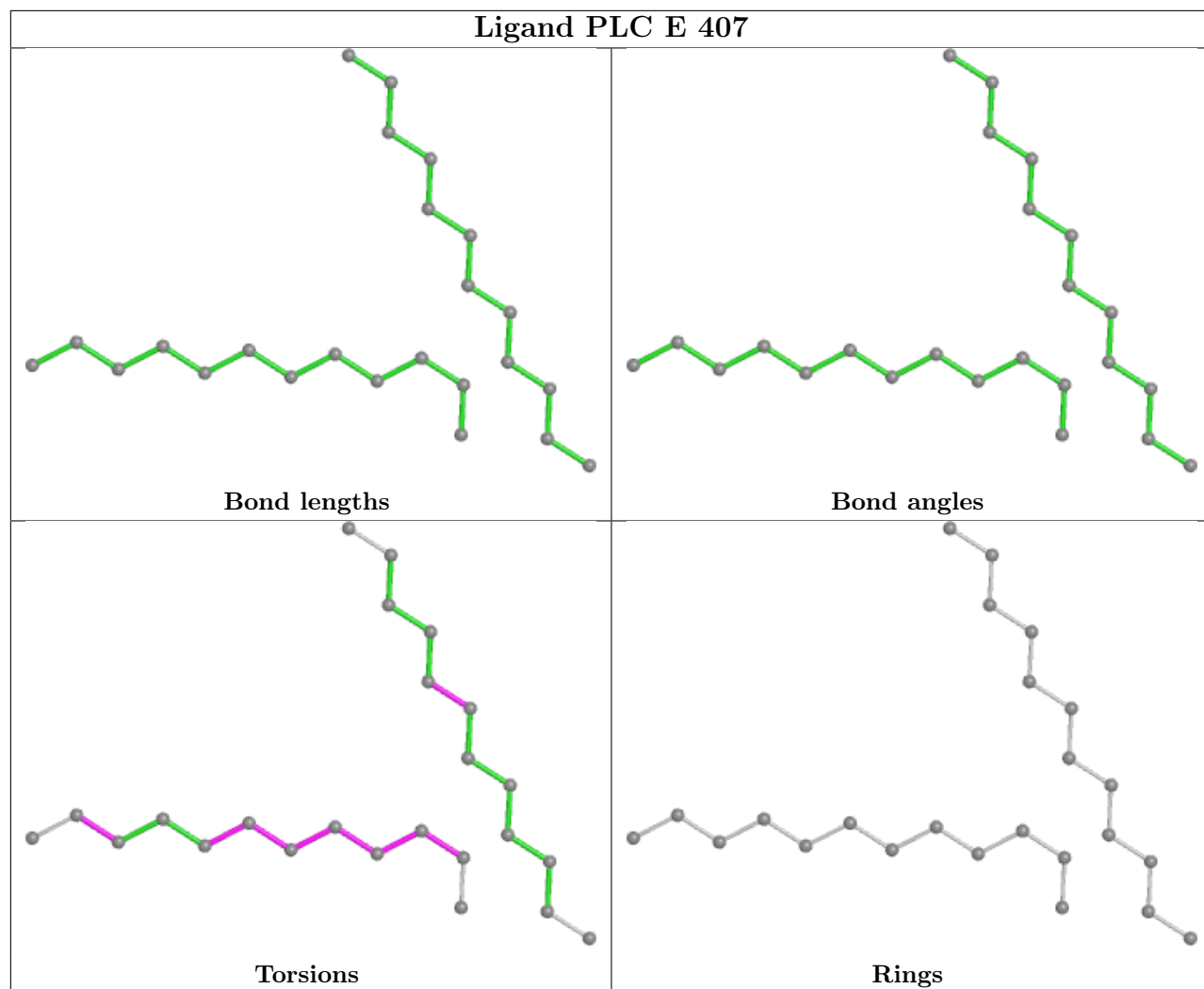
The following is a two-dimensional graphical depiction of Mogul quality analysis of bond lengths, bond angles, torsion angles, and ring geometry for all instances of the Ligand of Interest. In addition, ligands with molecular weight > 250 and outliers as shown on the validation Tables will also be included. For torsion angles, if less than 5% of the Mogul distribution of torsion angles is within 10 degrees of the torsion angle in question, then that torsion angle is considered an outlier. Any bond that is central to one or more torsion angles identified as an outlier by Mogul will be highlighted in the graph. For rings, the root-mean-square deviation (RMSD) between the ring in question and similar rings identified by Mogul is calculated over all ring torsion angles. If the average RMSD is greater than 60 degrees and the minimal RMSD between the ring in question and any Mogul-identified rings is also greater than 60 degrees, then that ring is considered an outlier. The outliers are highlighted in purple. The color gray indicates Mogul did not find sufficient equivalents in the CSD to analyse the geometry.

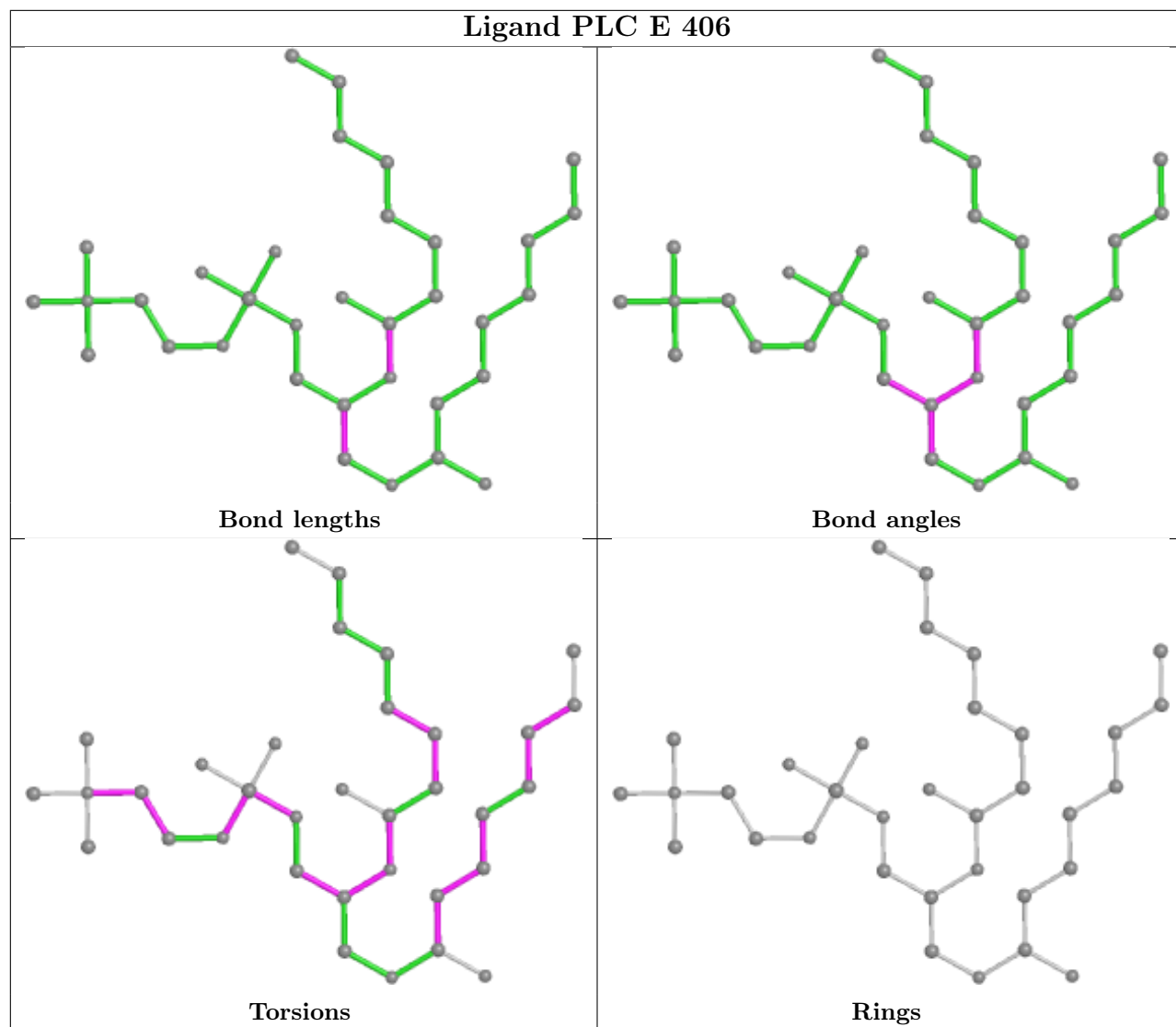


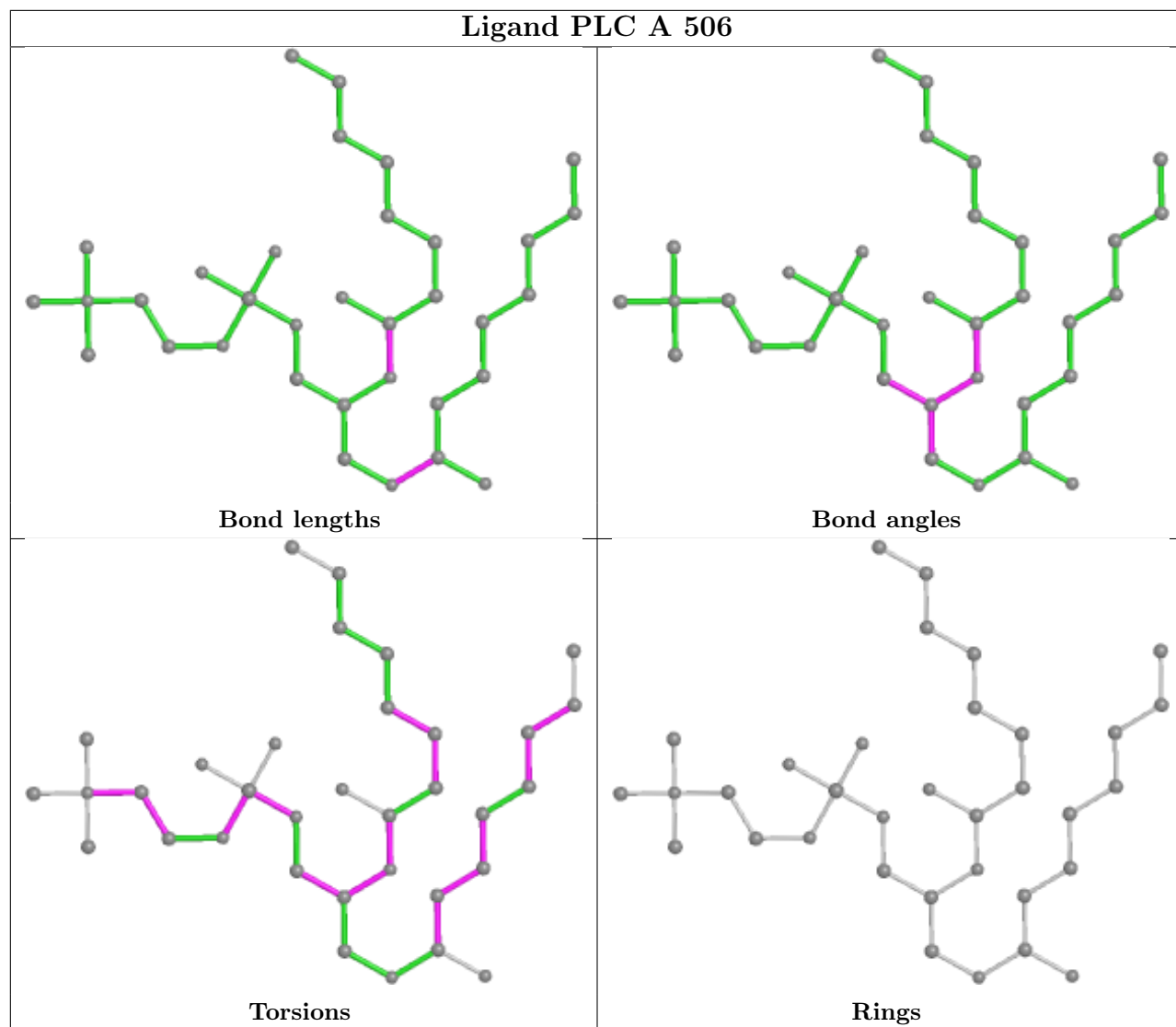


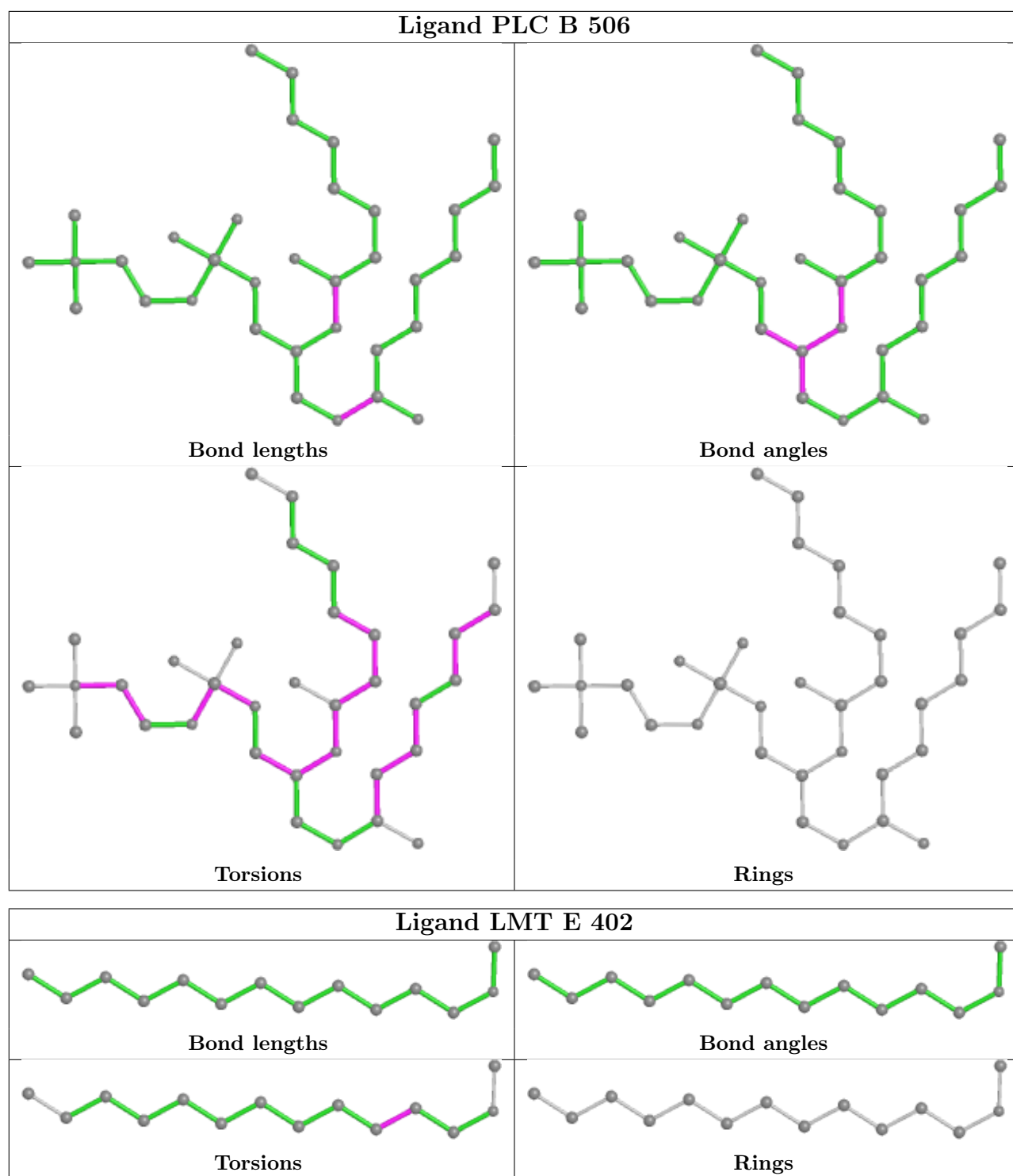


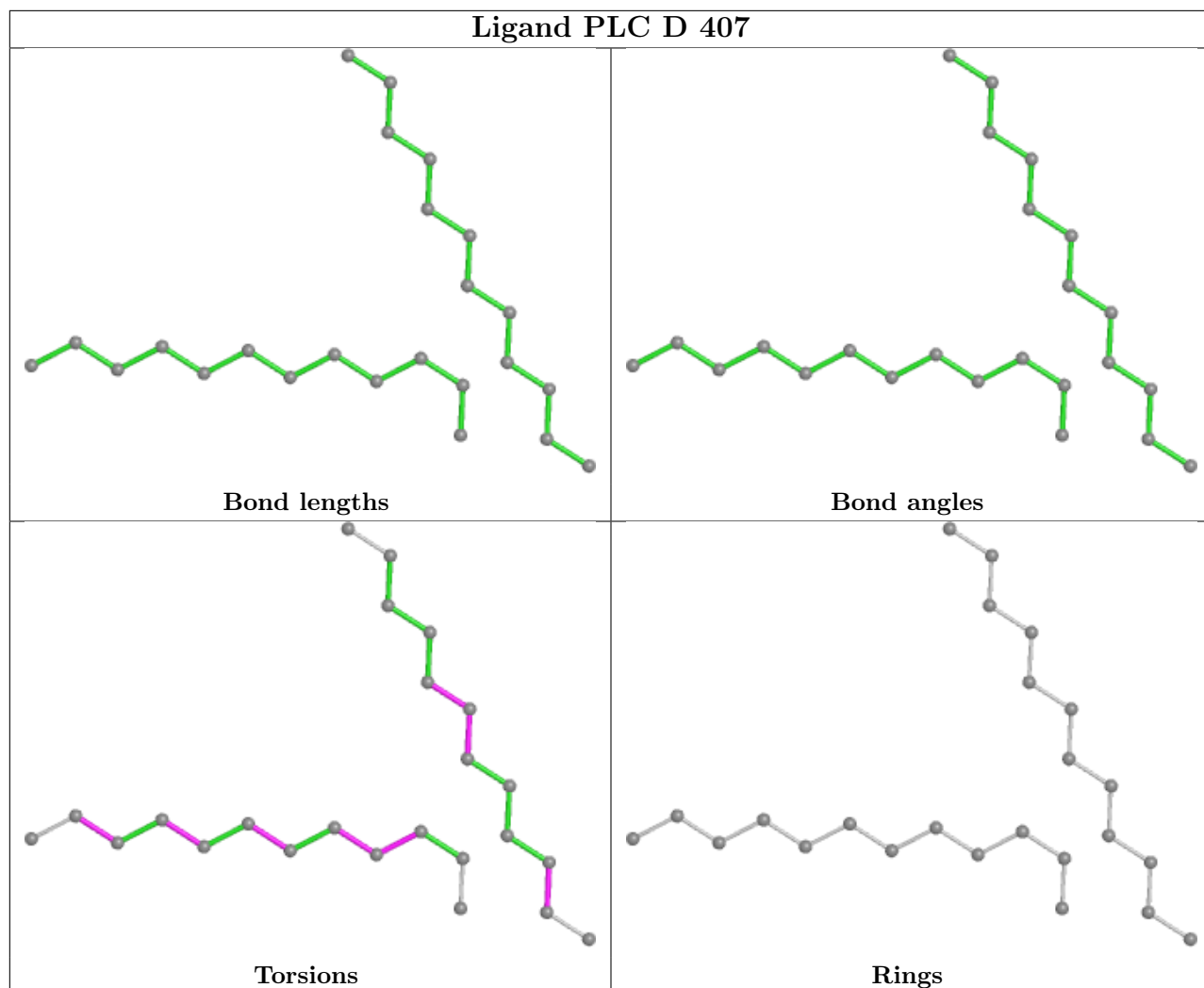


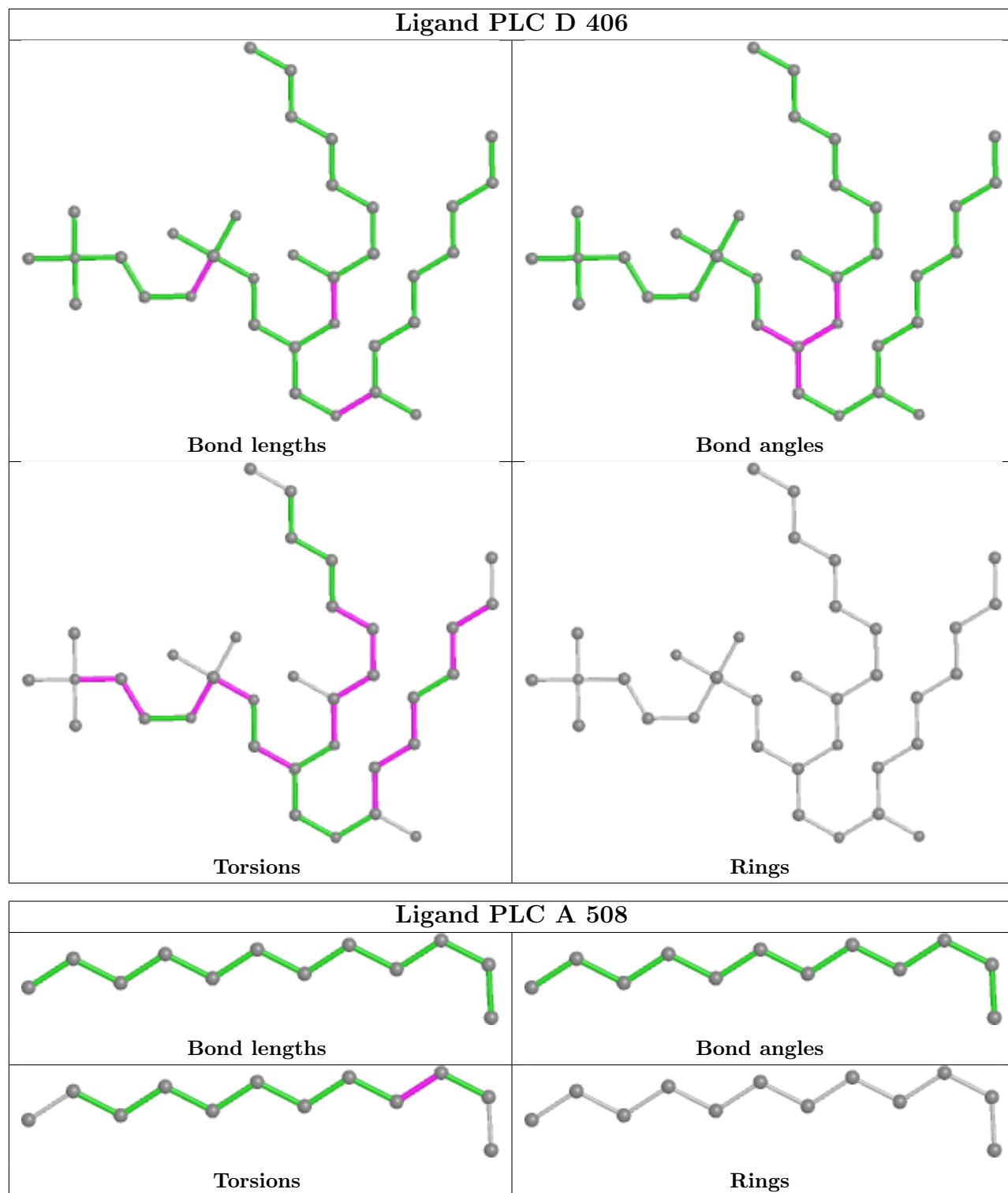


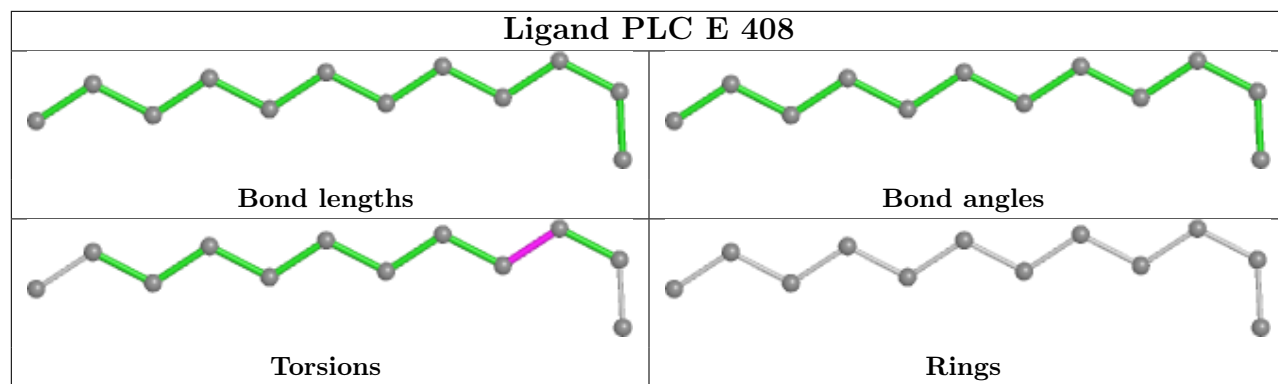












5.7 Other polymers [i](#)

There are no such residues in this entry.

5.8 Polymer linkage issues [i](#)

There are no chain breaks in this entry.

6 Fit of model and data [i](#)

6.1 Protein, DNA and RNA chains [i](#)

In the following table, the column labelled ‘#RSRZ > 2’ contains the number (and percentage) of RSRZ outliers, followed by percent RSRZ outliers for the chain as percentile scores relative to all X-ray entries and entries of similar resolution. The OWAB column contains the minimum, median, 95th percentile and maximum values of the occupancy-weighted average B-factor per residue. The column labelled ‘Q < 0.9’ lists the number of (and percentage) of residues with an average occupancy less than 0.9.

Mol	Chain	Analysed	<RSRZ>	#RSRZ>2	OWAB(Å ²)	Q<0.9
1	A	311/317 (98%)	-0.40	3 (0%) 82 67	53, 76, 122, 170	0
1	B	311/317 (98%)	-0.45	0 100 100	52, 75, 110, 146	0
1	C	311/317 (98%)	-0.37	4 (1%) 77 59	51, 76, 119, 168	0
1	D	311/317 (98%)	-0.43	1 (0%) 94 88	52, 75, 119, 173	0
1	E	311/317 (98%)	-0.39	5 (1%) 72 51	53, 77, 117, 157	0
All	All	1555/1585 (98%)	-0.41	13 (0%) 86 72	51, 76, 118, 173	0

All (13) RSRZ outliers are listed below:

Mol	Chain	Res	Type	RSRZ
1	C	58	ARG	4.2
1	E	58	ARG	3.8
1	A	57	VAL	3.3
1	D	283	SER	3.2
1	C	13	ASP	3.1
1	E	13	ASP	3.0
1	C	11	ILE	2.7
1	A	59	SER	2.7
1	E	69	GLU	2.5
1	E	12	ALA	2.4
1	A	11	ILE	2.3
1	C	12	ALA	2.3
1	E	170	LYS	2.1

6.2 Non-standard residues in protein, DNA, RNA chains [i](#)

There are no non-standard protein/DNA/RNA residues in this entry.

6.3 Carbohydrates [i](#)

There are no monosaccharides in this entry.

6.4 Ligands [i](#)

In the following table, the Atoms column lists the number of modelled atoms in the group and the number defined in the chemical component dictionary. The B-factors column lists the minimum, median, 95th percentile and maximum values of B factors of atoms in the group. The column labelled 'Q< 0.9' lists the number of atoms with occupancy less than 0.9.

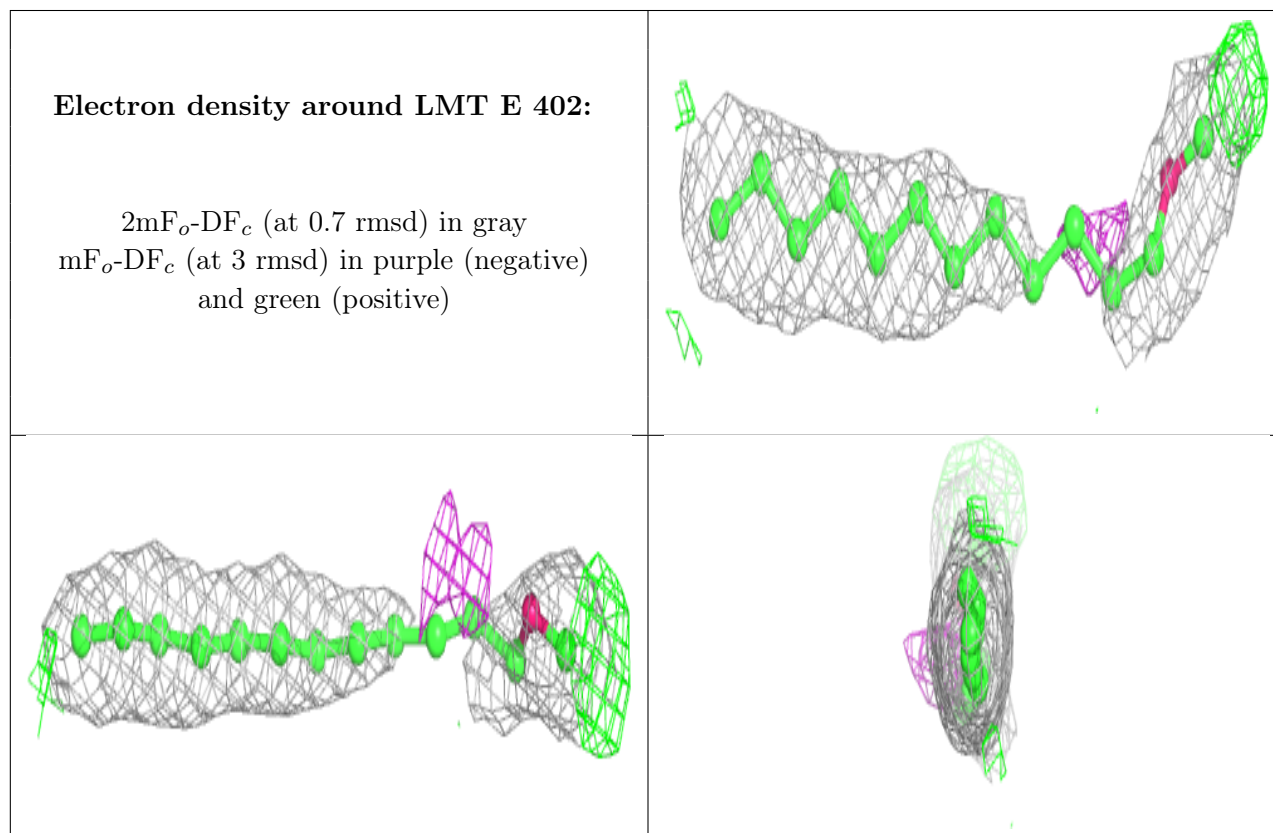
Mol	Type	Chain	Res	Atoms	RSCC	RSR	B-factors(Å ²)	Q<0.9
5	NA	B	505	1/1	0.49	0.39	70,70,70,70	0
5	NA	E	405	1/1	0.52	0.59	72,72,72,72	0
2	LMT	E	402	14/35	0.54	0.45	71,84,102,103	0
2	LMT	C	407	14/35	0.66	0.37	56,76,102,103	0
2	LMT	A	501	14/35	0.69	0.39	62,76,110,110	0
6	PLC	B	506	34/42	0.69	0.43	95,130,172,174	0
5	NA	E	410	1/1	0.71	0.36	92,92,92,92	0
4	CL	B	503	1/1	0.72	0.55	168,168,168,168	0
6	PLC	A	507	24/42	0.73	0.50	78,100,120,121	0
6	PLC	C	405	24/42	0.73	0.38	78,91,101,102	0
6	PLC	E	407	24/42	0.73	0.46	75,90,112,112	0
6	PLC	B	508	12/42	0.74	0.44	101,102,116,117	0
6	PLC	C	406	12/42	0.74	0.57	98,102,110,110	0
6	PLC	D	406	34/42	0.74	0.37	85,129,164,165	0
6	PLC	C	404	34/42	0.74	0.36	85,123,169,170	0
7	PFL	B	510	13/13	0.74	0.34	138,139,141,142	13
6	PLC	B	507	24/42	0.75	0.46	83,93,107,108	0
6	PLC	D	407	24/42	0.76	0.51	83,104,111,113	0
6	PLC	A	506	34/42	0.77	0.38	89,132,174,175	0
7	PFL	A	510	13/13	0.77	0.37	120,128,130,130	0
6	PLC	D	408	12/42	0.77	0.31	89,90,113,114	0
2	LMT	B	501	14/35	0.78	0.31	74,86,103,103	0
6	PLC	E	406	34/42	0.80	0.40	85,132,170,171	0
6	PLC	A	508	12/42	0.80	0.44	91,95,105,105	0
2	LMT	D	401	14/35	0.81	0.29	77,81,101,102	0
6	PLC	E	408	12/42	0.81	0.48	94,96,111,112	0
7	PFL	C	408	13/13	0.81	0.37	145,149,152,154	0
7	PFL	E	409	13/13	0.81	0.56	144,149,152,154	0
5	NA	A	509	1/1	0.82	0.20	82,82,82,82	0
5	NA	A	505	1/1	0.84	0.16	74,74,74,74	0
5	NA	D	405	1/1	0.86	0.08	81,81,81,81	0
7	PFL	A	511	13/13	0.87	0.34	131,139,142,143	0

Continued on next page...

Continued from previous page...

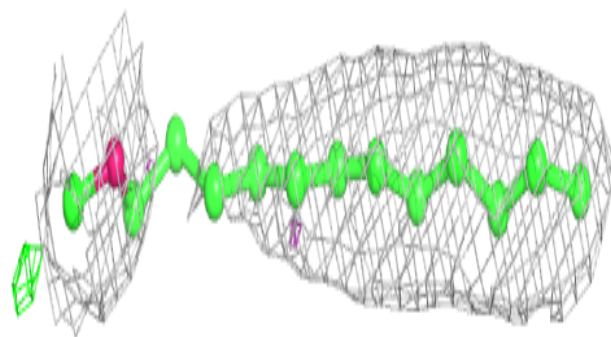
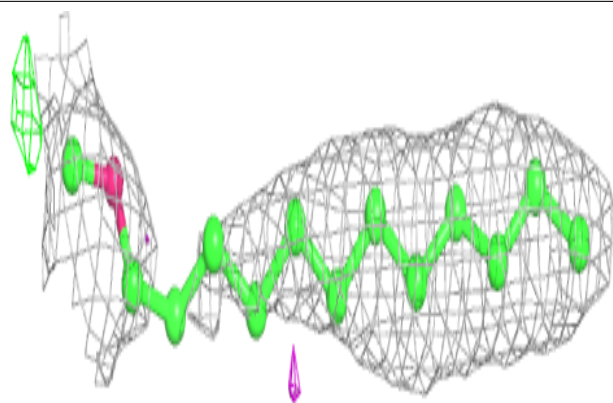
Mol	Type	Chain	Res	Atoms	RSCC	RSR	B-factors(\AA^2)	Q<0.9
2	LMT	E	401	12/35	0.87	0.28	74,83,89,90	0
4	CL	C	402	1/1	0.92	0.15	82,82,82,82	0
5	NA	C	403	1/1	0.94	0.14	72,72,72,72	0
4	CL	D	403	1/1	0.94	0.13	68,68,68,68	0
3	ACT	D	409	4/4	0.94	0.14	70,71,72,74	0
3	ACT	C	401	4/4	0.95	0.17	70,73,73,74	0
3	ACT	A	502	4/4	0.95	0.16	65,68,69,72	0
3	ACT	B	504	4/4	0.96	0.18	81,86,87,87	0
3	ACT	E	403	4/4	0.96	0.20	83,86,87,89	0
3	ACT	B	502	4/4	0.96	0.32	77,79,80,80	0
3	ACT	D	404	4/4	0.96	0.23	64,65,65,65	0
3	ACT	B	509	4/4	0.97	0.13	74,74,76,79	0
3	ACT	A	504	4/4	0.98	0.10	69,71,72,74	0
3	ACT	D	402	4/4	0.98	0.13	64,64,65,65	0
4	CL	E	404	1/1	0.98	0.13	72,72,72,72	0
4	CL	A	503	1/1	0.99	0.14	73,73,73,73	0

The following is a graphical depiction of the model fit to experimental electron density of all instances of the Ligand of Interest. In addition, ligands with molecular weight > 250 and outliers as shown on the geometry validation Tables will also be included. Each fit is shown from different orientation to approximate a three-dimensional view.

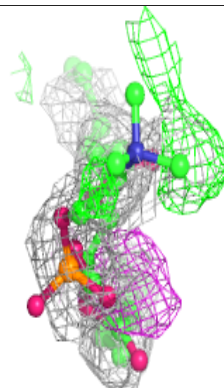
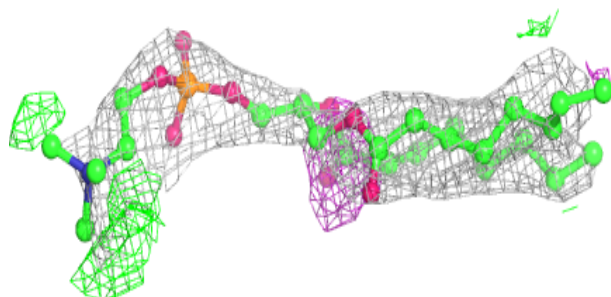
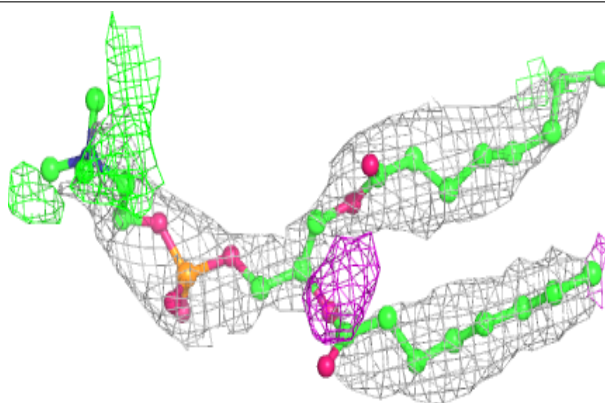


Electron density around LMT A 501:

$2mF_o-DF_c$ (at 0.7 rmsd) in gray
 mF_o-DF_c (at 3 rmsd) in purple (negative)
and green (positive)

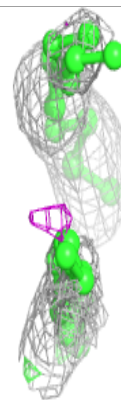
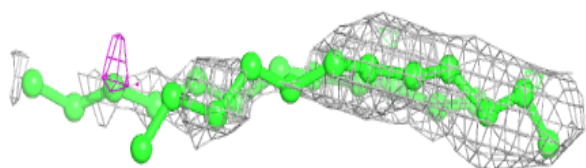
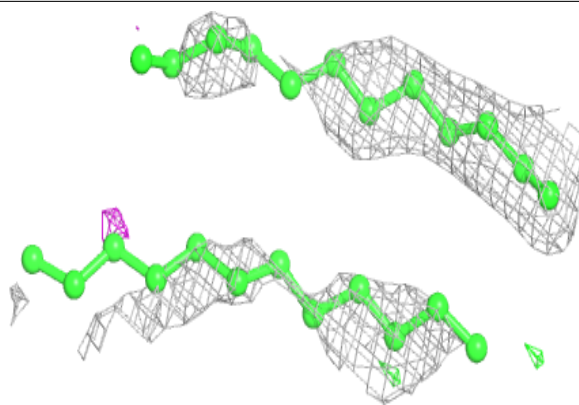
**Electron density around PLC B 506:**

$2mF_o-DF_c$ (at 0.7 rmsd) in gray
 mF_o-DF_c (at 3 rmsd) in purple (negative)
and green (positive)

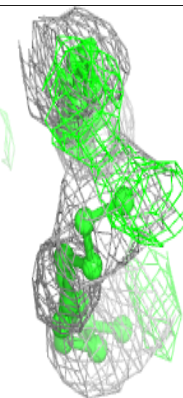
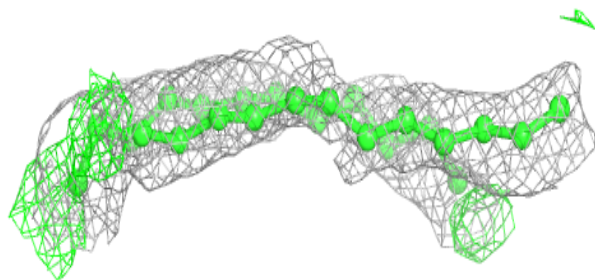
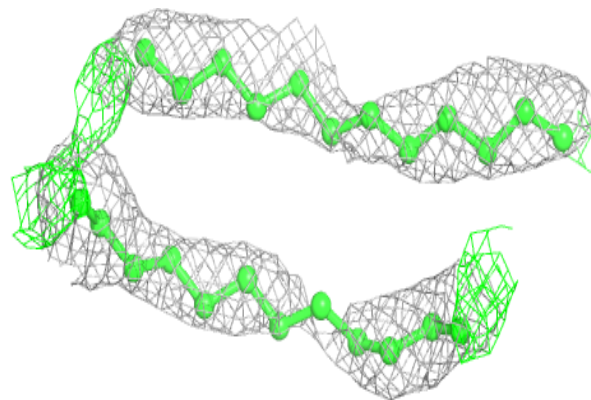


Electron density around PLC A 507:

$2mF_o-DF_c$ (at 0.7 rmsd) in gray
 mF_o-DF_c (at 3 rmsd) in purple (negative)
and green (positive)

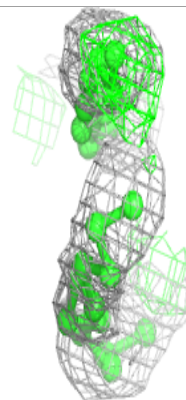
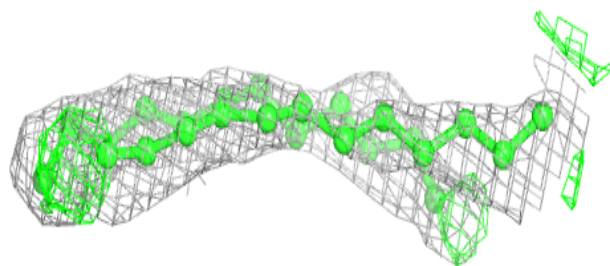
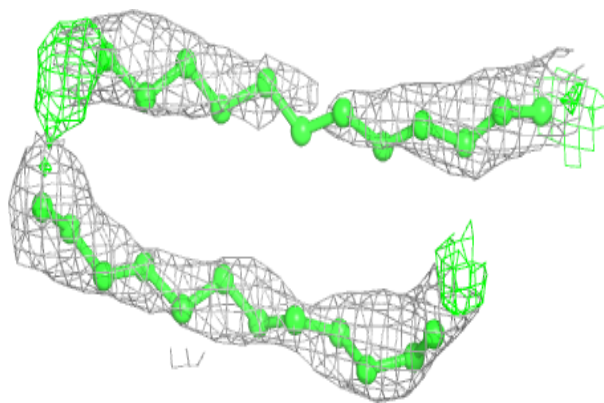
**Electron density around PLC C 405:**

$2mF_o-DF_c$ (at 0.7 rmsd) in gray
 mF_o-DF_c (at 3 rmsd) in purple (negative)
and green (positive)

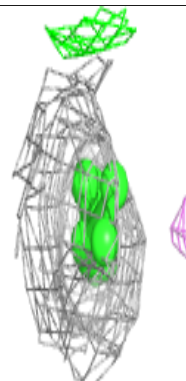
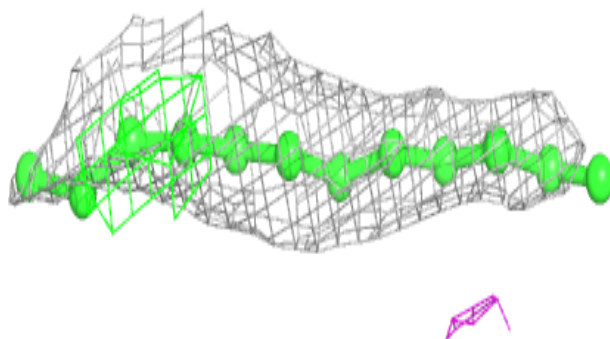
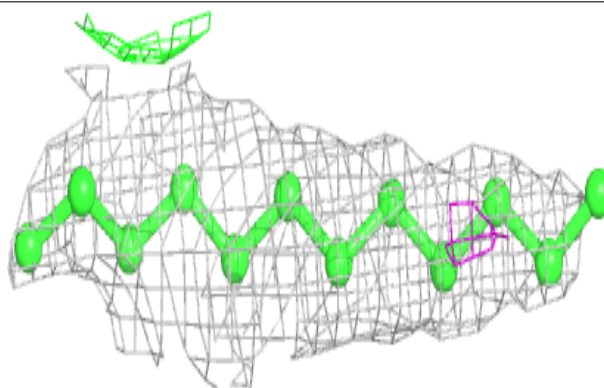


Electron density around PLC E 407:

$2mF_o-DF_c$ (at 0.7 rmsd) in gray
 mF_o-DF_c (at 3 rmsd) in purple (negative)
and green (positive)

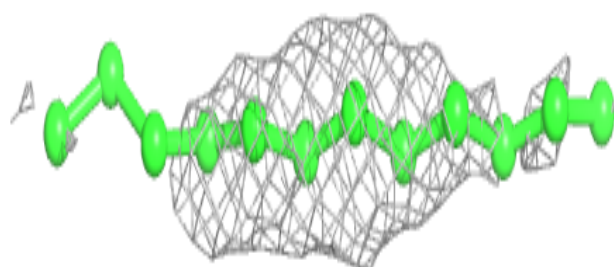
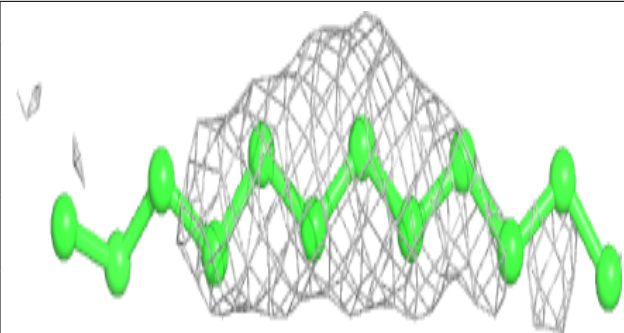
**Electron density around PLC B 508:**

$2mF_o-DF_c$ (at 0.7 rmsd) in gray
 mF_o-DF_c (at 3 rmsd) in purple (negative)
and green (positive)

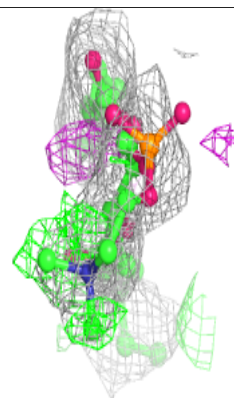
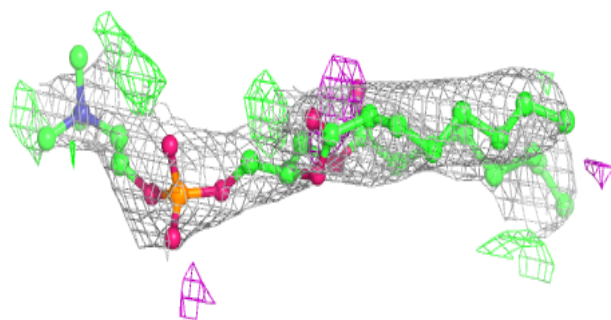
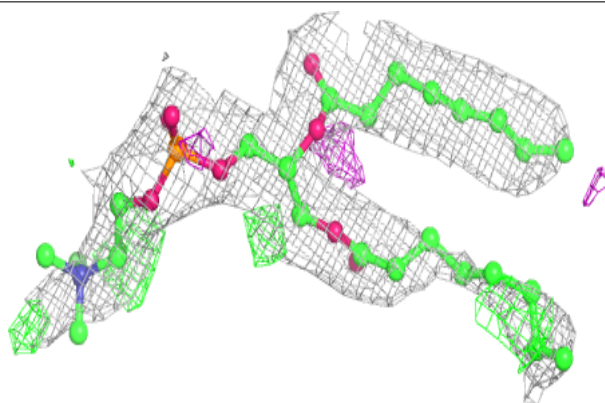


Electron density around PLC C 406:

$2mF_o-DF_c$ (at 0.7 rmsd) in gray
 mF_o-DF_c (at 3 rmsd) in purple (negative)
and green (positive)

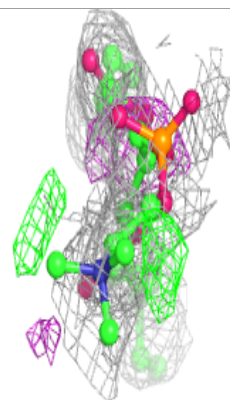
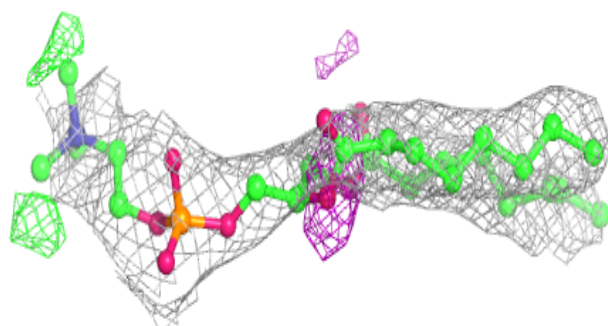
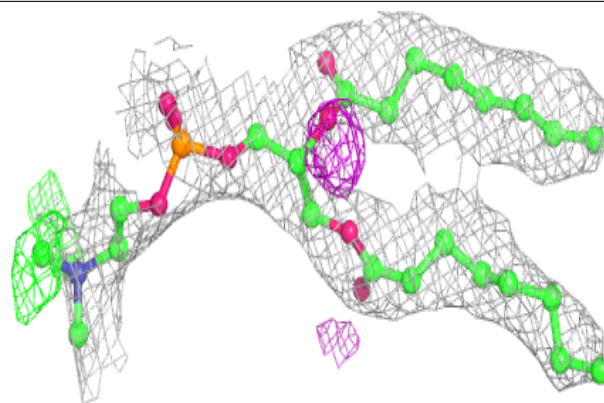
**Electron density around PLC D 406:**

$2mF_o-DF_c$ (at 0.7 rmsd) in gray
 mF_o-DF_c (at 3 rmsd) in purple (negative)
and green (positive)

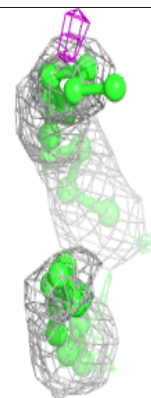
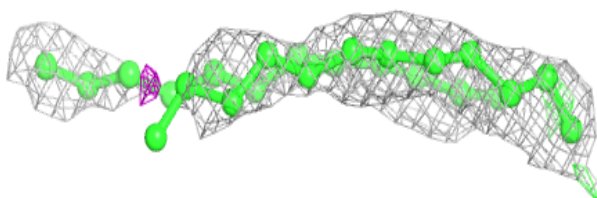
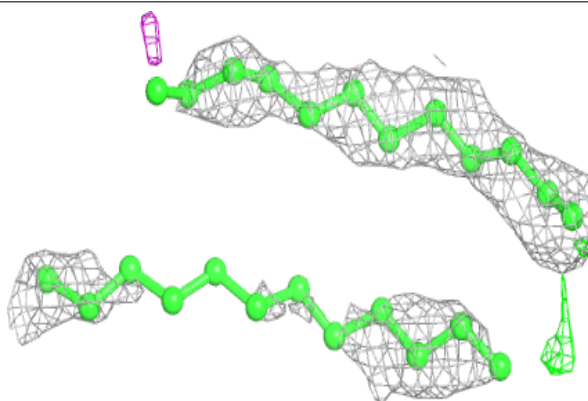


Electron density around PLC C 404:

$2mF_o-DF_c$ (at 0.7 rmsd) in gray
 mF_o-DF_c (at 3 rmsd) in purple (negative)
and green (positive)

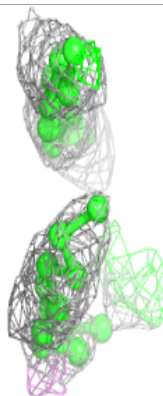
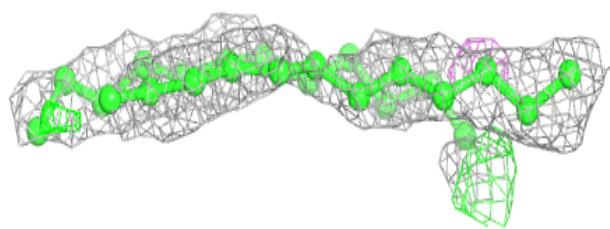
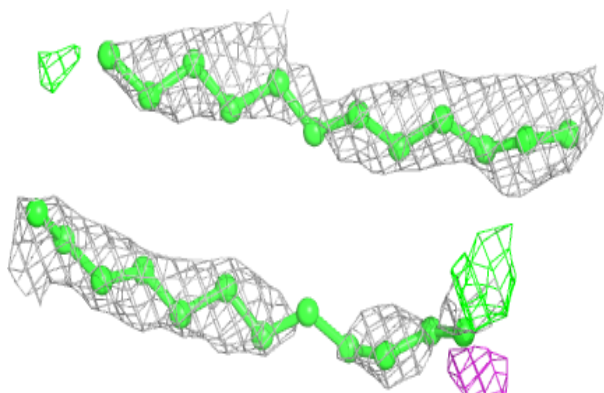
**Electron density around PLC B 507:**

$2mF_o-DF_c$ (at 0.7 rmsd) in gray
 mF_o-DF_c (at 3 rmsd) in purple (negative)
and green (positive)

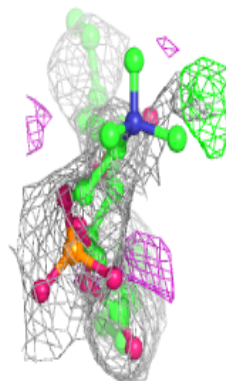
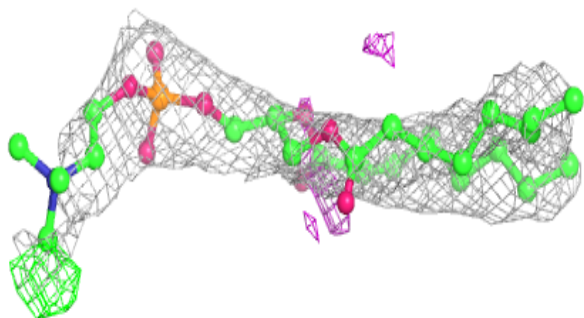
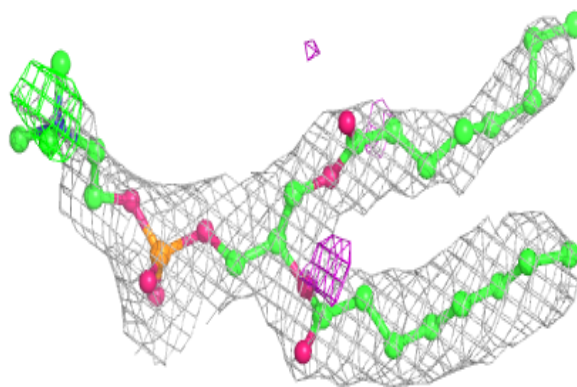


Electron density around PLC D 407:

$2mF_o-DF_c$ (at 0.7 rmsd) in gray
 mF_o-DF_c (at 3 rmsd) in purple (negative)
and green (positive)

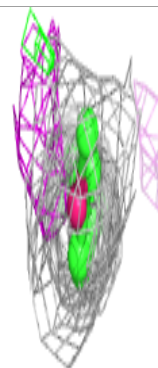
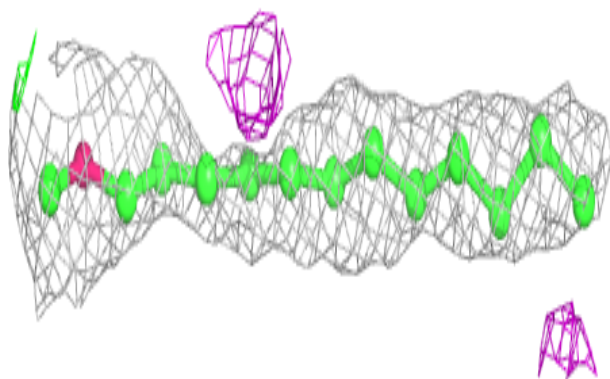
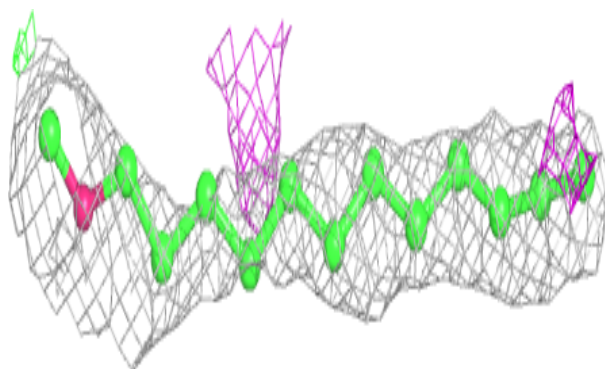
**Electron density around PLC A 506:**

$2mF_o-DF_c$ (at 0.7 rmsd) in gray
 mF_o-DF_c (at 3 rmsd) in purple (negative)
and green (positive)

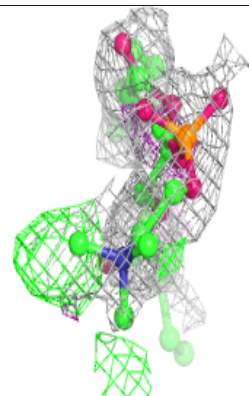
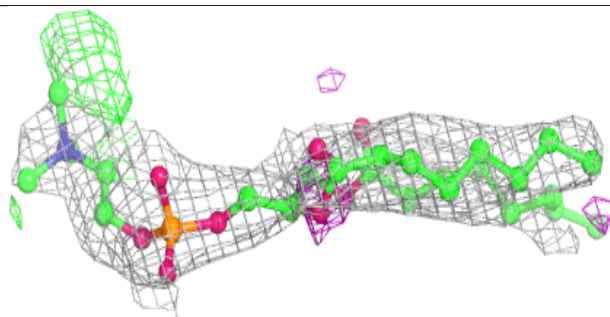
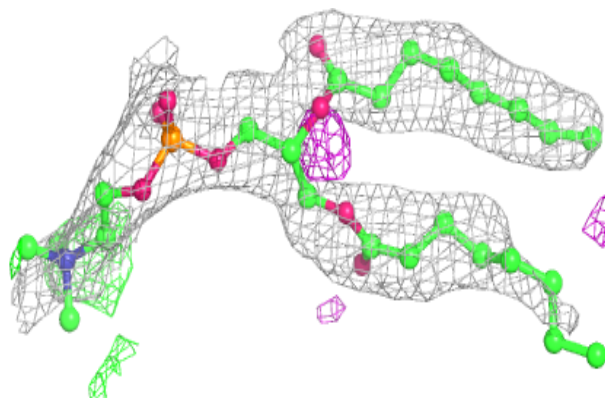


Electron density around LMT B 501:

$2mF_o-DF_c$ (at 0.7 rmsd) in gray
 mF_o-DF_c (at 3 rmsd) in purple (negative)
and green (positive)

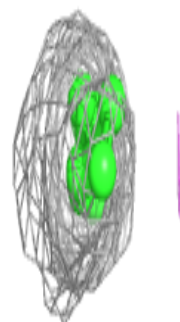
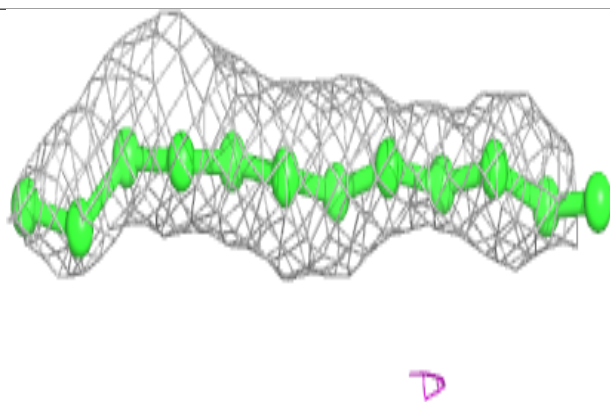
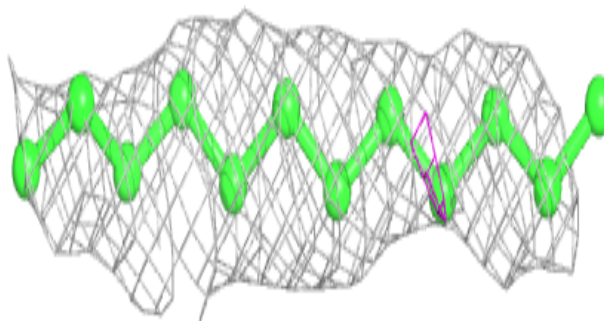
**Electron density around PLC E 406:**

$2mF_o-DF_c$ (at 0.7 rmsd) in gray
 mF_o-DF_c (at 3 rmsd) in purple (negative)
and green (positive)

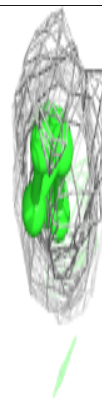
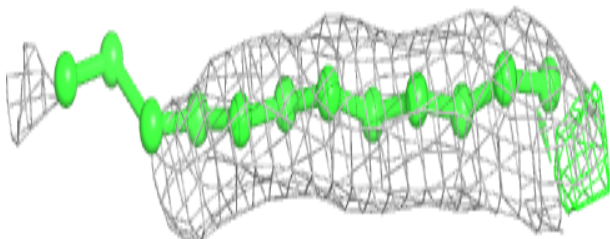
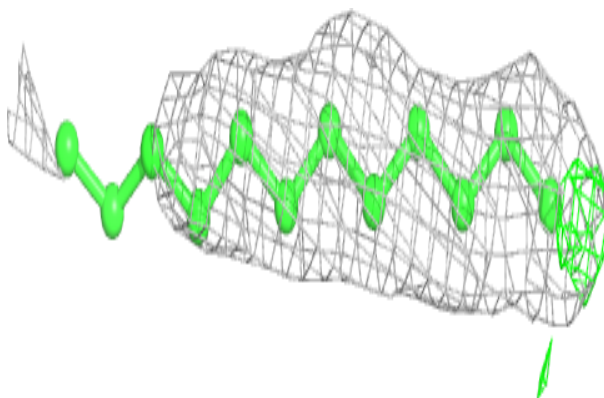


Electron density around PLC A 508:

$2mF_o-DF_c$ (at 0.7 rmsd) in gray
 mF_o-DF_c (at 3 rmsd) in purple (negative)
and green (positive)

**Electron density around PLC E 408:**

$2mF_o-DF_c$ (at 0.7 rmsd) in gray
 mF_o-DF_c (at 3 rmsd) in purple (negative)
and green (positive)



6.5 Other polymers [i](#)

There are no such residues in this entry.