



# wwPDB X-ray Structure Validation Summary Report ⓘ

Aug 21, 2020 – 02:19 PM BST

PDB ID : 5MYB  
Title : Homodimerization of Tie2 Fibronectin-like domains 2 and 3 in space group P21  
Authors : Leppanen, V.-M.; Saharinen, P.; Alitalo, K.  
Deposited on : 2017-01-26  
Resolution : 2.60 Å(reported)

This is a wwPDB X-ray Structure Validation Summary Report for a publicly released PDB entry.

We welcome your comments at [validation@mail.wwpdb.org](mailto:validation@mail.wwpdb.org)

A user guide is available at

<https://www.wwpdb.org/validation/2017/XrayValidationReportHelp>

with specific help available everywhere you see the ⓘ symbol.

---

The following versions of software and data (see [references ⓘ](#)) were used in the production of this report:

MolProbity : 4.02b-467  
Mogul : 1.8.5 (274361), CSD as541be (2020)  
Xtriage (Phenix) : 1.13  
EDS : 2.13.1  
Percentile statistics : 20191225.v01 (using entries in the PDB archive December 25th 2019)  
Refmac : 5.8.0158  
CCP4 : 7.0.044 (Gargrove)  
Ideal geometry (proteins) : Engh & Huber (2001)  
Ideal geometry (DNA, RNA) : Parkinson et al. (1996)  
Validation Pipeline (wwPDB-VP) : 2.13.1

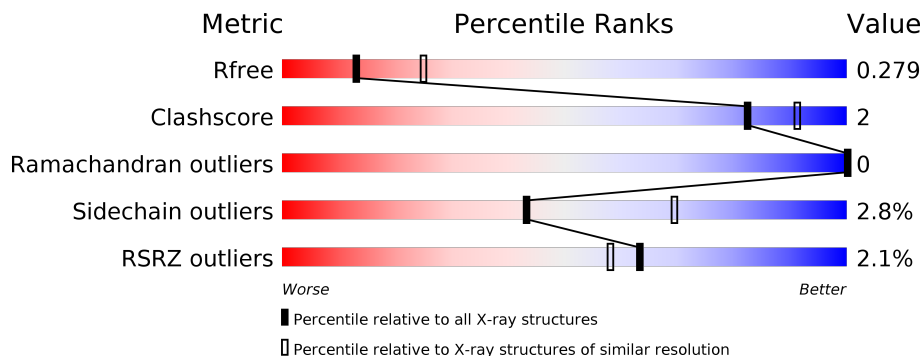
# 1 Overall quality at a glance

The following experimental techniques were used to determine the structure:

*X-RAY DIFFRACTION*

The reported resolution of this entry is 2.60 Å.

Percentile scores (ranging between 0-100) for global validation metrics of the entry are shown in the following graphic. The table shows the number of entries on which the scores are based.



Metric	Whole archive (#Entries)	Similar resolution (#Entries, resolution range(Å))
$R_{free}$	130704	3163 (2.60-2.60)
Clashscore	141614	3518 (2.60-2.60)
Ramachandran outliers	138981	3455 (2.60-2.60)
Sidechain outliers	138945	3455 (2.60-2.60)
RSRZ outliers	127900	3104 (2.60-2.60)

The table below summarises the geometric issues observed across the polymeric chains and their fit to the electron density. The red, orange, yellow and green segments on the lower bar indicate the fraction of residues that contain outliers for  $\geq 3$ , 2, 1 and 0 types of geometric quality criteria respectively. A grey segment represents the fraction of residues that are not modelled. The numeric value for each fraction is indicated below the corresponding segment, with a dot representing fractions  $\leq 5\%$ . The upper red bar (where present) indicates the fraction of residues that have poor fit to the electron density. The numeric value is given above the bar.

Mol	Chain	Length	Quality of chain
1	A	333	
1	B	333	
2	C	3	
3	D	2	

The following table lists non-polymeric compounds, carbohydrate monomers and non-standard residues in protein, DNA, RNA chains that are outliers for geometric or electron-density-fit crite-

ria:

Mol	Type	Chain	Res	Chirality	Geometry	Clashes	Electron density
2	NAG	C	2	-	-	X	-
2	BMA	C	3	-	-	X	-

## 2 Entry composition [i](#)

There are 5 unique types of molecules in this entry. The entry contains 3123 atoms, of which 0 are hydrogens and 0 are deuteriums.

In the tables below, the ZeroOcc column contains the number of atoms modelled with zero occupancy, the AltConf column contains the number of residues with at least one atom in alternate conformation and the Trace column contains the number of residues modelled with at most 2 atoms.

- Molecule 1 is a protein called Angiopoietin-1 receptor.

Mol	Chain	Residues	Atoms				ZeroOcc	AltConf	Trace
			Total	C	N	O			
1	A	190	1471	934	251	286	0	0	0
1	B	191	1467	929	254	284	0	0	0

There are 66 discrepancies between the modelled and reference sequences:

Chain	Residue	Modelled	Actual	Comment	Reference
A	420	MET	-	initiating methionine	UNP Q02763
A	421	LYS	-	expression tag	UNP Q02763
A	422	PHE	-	expression tag	UNP Q02763
A	423	LEU	-	expression tag	UNP Q02763
A	424	VAL	-	expression tag	UNP Q02763
A	425	ASN	-	expression tag	UNP Q02763
A	426	VAL	-	expression tag	UNP Q02763
A	427	ALA	-	expression tag	UNP Q02763
A	428	LEU	-	expression tag	UNP Q02763
A	429	VAL	-	expression tag	UNP Q02763
A	430	PHE	-	expression tag	UNP Q02763
A	431	MET	-	expression tag	UNP Q02763
A	432	VAL	-	expression tag	UNP Q02763
A	433	VAL	-	expression tag	UNP Q02763
A	434	TYR	-	expression tag	UNP Q02763
A	435	ILE	-	expression tag	UNP Q02763
A	436	SER	-	expression tag	UNP Q02763
A	437	TYR	-	expression tag	UNP Q02763
A	438	ILE	-	expression tag	UNP Q02763
A	439	TYR	-	expression tag	UNP Q02763
A	440	ALA	-	expression tag	UNP Q02763
A	441	ASP	-	expression tag	UNP Q02763
A	442	PRO	-	expression tag	UNP Q02763
A	743	ILE	-	expression tag	UNP Q02763
A	744	GLU	-	expression tag	UNP Q02763

*Continued on next page...*

*Continued from previous page...*

Chain	Residue	Modelled	Actual	Comment	Reference
A	745	GLY	-	expression tag	UNP Q02763
A	746	ARG	-	expression tag	UNP Q02763
A	747	HIS	-	expression tag	UNP Q02763
A	748	HIS	-	expression tag	UNP Q02763
A	749	HIS	-	expression tag	UNP Q02763
A	750	HIS	-	expression tag	UNP Q02763
A	751	HIS	-	expression tag	UNP Q02763
A	752	HIS	-	expression tag	UNP Q02763
B	420	MET	-	initiating methionine	UNP Q02763
B	421	LYS	-	expression tag	UNP Q02763
B	422	PHE	-	expression tag	UNP Q02763
B	423	LEU	-	expression tag	UNP Q02763
B	424	VAL	-	expression tag	UNP Q02763
B	425	ASN	-	expression tag	UNP Q02763
B	426	VAL	-	expression tag	UNP Q02763
B	427	ALA	-	expression tag	UNP Q02763
B	428	LEU	-	expression tag	UNP Q02763
B	429	VAL	-	expression tag	UNP Q02763
B	430	PHE	-	expression tag	UNP Q02763
B	431	MET	-	expression tag	UNP Q02763
B	432	VAL	-	expression tag	UNP Q02763
B	433	VAL	-	expression tag	UNP Q02763
B	434	TYR	-	expression tag	UNP Q02763
B	435	ILE	-	expression tag	UNP Q02763
B	436	SER	-	expression tag	UNP Q02763
B	437	TYR	-	expression tag	UNP Q02763
B	438	ILE	-	expression tag	UNP Q02763
B	439	TYR	-	expression tag	UNP Q02763
B	440	ALA	-	expression tag	UNP Q02763
B	441	ASP	-	expression tag	UNP Q02763
B	442	PRO	-	expression tag	UNP Q02763
B	743	ILE	-	expression tag	UNP Q02763
B	744	GLU	-	expression tag	UNP Q02763
B	745	GLY	-	expression tag	UNP Q02763
B	746	ARG	-	expression tag	UNP Q02763
B	747	HIS	-	expression tag	UNP Q02763
B	748	HIS	-	expression tag	UNP Q02763
B	749	HIS	-	expression tag	UNP Q02763
B	750	HIS	-	expression tag	UNP Q02763
B	751	HIS	-	expression tag	UNP Q02763
B	752	HIS	-	expression tag	UNP Q02763

- Molecule 2 is an oligosaccharide called beta-D-mannopyranose-(1-3)-2-acetamido-2-deoxy-b

eta-D-glucopyranose-(1-4)-2-acetamido-2-deoxy-beta-D-glucopyranose.



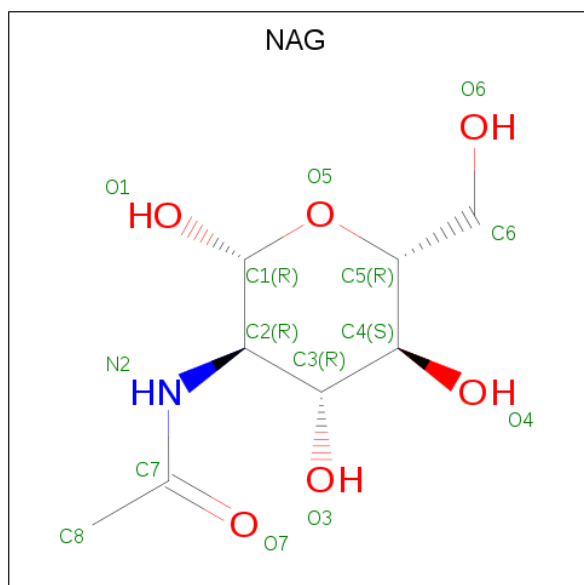
Mol	Chain	Residues	Atoms				ZeroOcc	AltConf	Trace
			Total	C	N	O			
2	C	3	39	22	2	15	0	0	0

- Molecule 3 is an oligosaccharide called 2-acetamido-2-deoxy-beta-D-glucopyranose-(1-4)-2-acetamido-2-deoxy-beta-D-glucopyranose.



Mol	Chain	Residues	Atoms				ZeroOcc	AltConf	Trace
			Total	C	N	O			
3	D	2	28	16	2	10	0	0	0

- Molecule 4 is 2-acetamido-2-deoxy-beta-D-glucopyranose (three-letter code: NAG) (formula: C<sub>8</sub>H<sub>15</sub>NO<sub>6</sub>).



Mol	Chain	Residues	Atoms				ZeroOcc	AltConf
			Total	C	N	O		
4	A	1	14	8	1	5	0	0

*Continued on next page...*

*Continued from previous page...*

Mol	Chain	Residues	Atoms				ZeroOcc	AltConf
4	A	1	Total	C	N	O	0	0
			14	8	1	5		
4	B	1	Total	C	N	O	0	0
			14	8	1	5		
4	B	1	Total	C	N	O	0	0
			14	8	1	5		

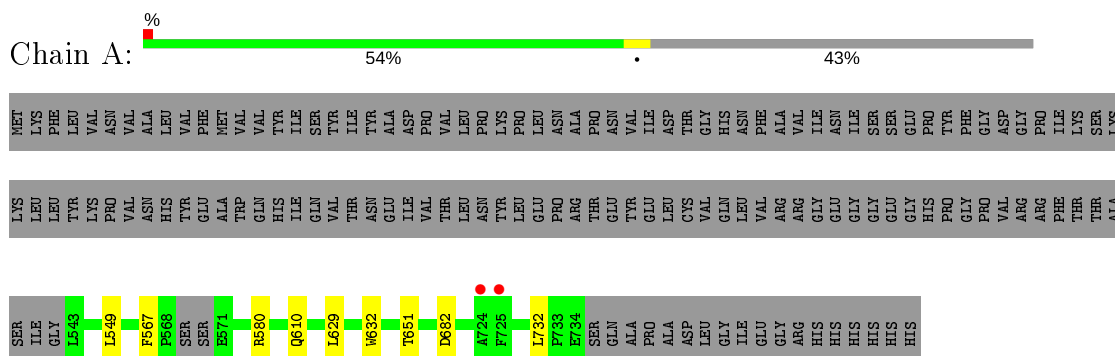
- Molecule 5 is water.

Mol	Chain	Residues	Atoms		ZeroOcc	AltConf
5	A	21	Total	O	0	0
			21	21		
5	B	41	Total	O	0	0
			41	41		

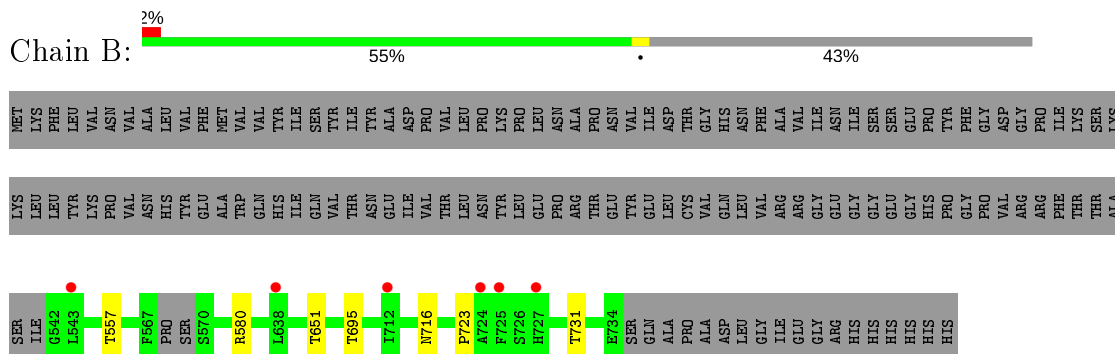
### 3 Residue-property plots

These plots are drawn for all protein, RNA, DNA and oligosaccharide chains in the entry. The first graphic for a chain summarises the proportions of the various outlier classes displayed in the second graphic. The second graphic shows the sequence view annotated by issues in geometry and electron density. Residues are color-coded according to the number of geometric quality criteria for which they contain at least one outlier: green = 0, yellow = 1, orange = 2 and red = 3 or more. A red dot above a residue indicates a poor fit to the electron density ( $RSRZ > 2$ ). Stretches of 2 or more consecutive residues without any outlier are shown as a green connector. Residues present in the sample, but not in the model, are shown in grey.

- Molecule 1: Angiotensin-1 receptor



- Molecule 1: Angiotensin-1 receptor



- Molecule 2: beta-D-mannopyranose-(1-3)-2-acetamido-2-deoxy-beta-D-glucopyranose-(1-4)-2-acetamido-2-deoxy-beta-D-glucopyranose



- Molecule 3: 2-acetamido-2-deoxy-beta-D-glucopyranose-(1-4)-2-acetamido-2-deoxy-beta-D-glucopyranose





MAC1  
MAC2

## 4 Data and refinement statistics

Property	Value	Source
Space group	P 1 21 1	Depositor
Cell constants a, b, c, $\alpha$ , $\beta$ , $\gamma$	78.46Å 48.49Å 80.67Å 90.00° 111.09° 90.00°	Depositor
Resolution (Å)	39.80 – 2.60 39.79 – 2.60	Depositor EDS
% Data completeness (in resolution range)	98.9 (39.80-2.60) 99.0 (39.79-2.60)	Depositor EDS
$R_{merge}$	(Not available)	Depositor
$R_{sym}$	(Not available)	Depositor
$\langle I/\sigma(I) \rangle$ <sup>1</sup>	1.90 (at 2.61Å)	Xtrriage
Refinement program	PHENIX 1.9_1692	Depositor
R, $R_{free}$	0.222 , 0.278 0.224 , 0.279	Depositor DCC
$R_{free}$ test set	1054 reflections (6.00%)	wwPDB-VP
Wilson B-factor (Å <sup>2</sup> )	89.9	Xtrriage
Anisotropy	0.417	Xtrriage
Bulk solvent $k_{sol}$ (e/Å <sup>3</sup> ), $B_{sol}$ (Å <sup>2</sup> )	0.31 , 80.6	EDS
L-test for twinning <sup>2</sup>	$\langle  L  \rangle = 0.48$ , $\langle L^2 \rangle = 0.31$	Xtrriage
Estimated twinning fraction	0.020 for l,-k,h	Xtrriage
$F_o, F_c$ correlation	0.96	EDS
Total number of atoms	3123	wwPDB-VP
Average B, all atoms (Å <sup>2</sup> )	112.0	wwPDB-VP

Xtrriage's analysis on translational NCS is as follows: *The largest off-origin peak in the Patterson function is 6.29% of the height of the origin peak. No significant pseudotranslation is detected.*

<sup>1</sup>Intensities estimated from amplitudes.

<sup>2</sup>Theoretical values of  $\langle |L| \rangle$ ,  $\langle L^2 \rangle$  for acentric reflections are 0.5, 0.333 respectively for untwinned datasets, and 0.375, 0.2 for perfectly twinned datasets.

## 5 Model quality [i](#)

### 5.1 Standard geometry [i](#)

Bond lengths and bond angles in the following residue types are not validated in this section: BMA, NAG

The Z score for a bond length (or angle) is the number of standard deviations the observed value is removed from the expected value. A bond length (or angle) with  $|Z| > 5$  is considered an outlier worth inspection. RMSZ is the root-mean-square of all Z scores of the bond lengths (or angles).

Mol	Chain	Bond lengths		Bond angles	
		RMSZ	# Z  >5	RMSZ	# Z  >5
1	A	0.36	0/1505	0.61	0/2066
1	B	0.34	0/1500	0.57	0/2059
All	All	0.35	0/3005	0.59	0/4125

There are no bond length outliers.

There are no bond angle outliers.

There are no chirality outliers.

There are no planarity outliers.

### 5.2 Too-close contacts [i](#)

In the following table, the Non-H and H(model) columns list the number of non-hydrogen atoms and hydrogen atoms in the chain respectively. The H(added) column lists the number of hydrogen atoms added and optimized by MolProbity. The Clashes column lists the number of clashes within the asymmetric unit, whereas Symm-Clashes lists symmetry related clashes.

Mol	Chain	Non-H	H(model)	H(added)	Clashes	Symm-Clashes
1	A	1471	0	1414	3	0
1	B	1467	0	1405	3	0
2	C	39	0	34	9	0
3	D	28	0	25	0	0
4	A	28	0	26	0	0
4	B	28	0	26	0	0
5	A	21	0	0	2	0
5	B	41	0	0	3	0
All	All	3123	0	2930	15	0

The all-atom clashscore is defined as the number of clashes found per 1000 atoms (including hydrogen atoms). The all-atom clashscore for this structure is 2.

The worst 5 of 15 close contacts within the same asymmetric unit are listed below, sorted by their clash magnitude.

Atom-1	Atom-2	Interatomic distance (Å)	Clash overlap (Å)
5:A:901:HOH:O	2:C:3:BMA:O3	1.53	1.15
2:C:2:NAG:H62	2:C:3:BMA:H2	1.39	1.01
1:B:695:THR:OG1	5:B:901:HOH:O	1.85	0.94
2:C:2:NAG:H62	2:C:3:BMA:C2	2.07	0.85
2:C:2:NAG:H4	2:C:3:BMA:O2	1.79	0.83

There are no symmetry-related clashes.

### 5.3 Torsion angles [i](#)

#### 5.3.1 Protein backbone [i](#)

In the following table, the Percentiles column shows the percent Ramachandran outliers of the chain as a percentile score with respect to all X-ray entries followed by that with respect to entries of similar resolution.

The Analysed column shows the number of residues for which the backbone conformation was analysed, and the total number of residues.

Mol	Chain	Analysed	Favoured	Allowed	Outliers	Percentiles	
1	A	186/333 (56%)	177 (95%)	9 (5%)	0	100	100
1	B	187/333 (56%)	175 (94%)	12 (6%)	0	100	100
All	All	373/666 (56%)	352 (94%)	21 (6%)	0	100	100

There are no Ramachandran outliers to report.

#### 5.3.2 Protein sidechains [i](#)

In the following table, the Percentiles column shows the percent sidechain outliers of the chain as a percentile score with respect to all X-ray entries followed by that with respect to entries of similar resolution.

The Analysed column shows the number of residues for which the sidechain conformation was analysed, and the total number of residues.

Mol	Chain	Analysed	Rotameric	Outliers	Percentiles	
1	A	163/299 (54%)	158 (97%)	5 (3%)	40	66

*Continued on next page...*

Continued from previous page...

Mol	Chain	Analysed	Rotameric	Outliers	Percentiles	
1	B	161/299 (54%)	157 (98%)	4 (2%)	47	73
All	All	324/598 (54%)	315 (97%)	9 (3%)	43	69

5 of 9 residues with a non-rotameric sidechain are listed below:

Mol	Chain	Res	Type
1	A	732	LEU
1	B	731	THR
1	B	651	THR
1	A	651	THR
1	B	580	ARG

Some sidechains can be flipped to improve hydrogen bonding and reduce clashes. All (1) such sidechains are listed below:

Mol	Chain	Res	Type
1	B	716	ASN

### 5.3.3 RNA [i](#)

There are no RNA molecules in this entry.

## 5.4 Non-standard residues in protein, DNA, RNA chains [i](#)

There are no non-standard protein/DNA/RNA residues in this entry.

## 5.5 Carbohydrates [i](#)

5 monosaccharides are modelled in this entry.

In the following table, the Counts columns list the number of bonds (or angles) for which Mogul statistics could be retrieved, the number of bonds (or angles) that are observed in the model and the number of bonds (or angles) that are defined in the Chemical Component Dictionary. The Link column lists molecule types, if any, to which the group is linked. The Z score for a bond length (or angle) is the number of standard deviations the observed value is removed from the expected value. A bond length (or angle) with  $|Z| > 2$  is considered an outlier worth inspection. RMSZ is the root-mean-square of all Z scores of the bond lengths (or angles).

Mol	Type	Chain	Res	Link	Bond lengths			Bond angles		
					Counts	RMSZ	$\# Z  > 2$	Counts	RMSZ	$\# Z  > 2$
2	NAG	C	1	1,2	14,14,15	0.71	0	17,19,21	1.92	3 (17%)

Mol	Type	Chain	Res	Link	Bond lengths			Bond angles		
					Counts	RMSZ	# Z  > 2	Counts	RMSZ	# Z  > 2
2	NAG	C	2	2	14,14,15	0.45	0	17,19,21	1.81	3 (17%)
2	BMA	C	3	2	11,11,12	0.34	0	15,15,17	1.12	1 (6%)
3	NAG	D	1	1,3	14,14,15	0.36	0	17,19,21	2.06	2 (11%)
3	NAG	D	2	3	14,14,15	0.42	0	17,19,21	0.98	1 (5%)

In the following table, the Chirals column lists the number of chiral outliers, the number of chiral centers analysed, the number of these observed in the model and the number defined in the Chemical Component Dictionary. Similar counts are reported in the Torsion and Rings columns. '-' means no outliers of that kind were identified.

Mol	Type	Chain	Res	Link	Chirals	Torsions	Rings
2	NAG	C	1	1,2	-	2/6/23/26	0/1/1/1
2	NAG	C	2	2	-	2/6/23/26	0/1/1/1
2	BMA	C	3	2	-	2/2/19/22	0/1/1/1
3	NAG	D	1	1,3	-	1/6/23/26	0/1/1/1
3	NAG	D	2	3	-	0/6/23/26	0/1/1/1

There are no bond length outliers.

The worst 5 of 10 bond angle outliers are listed below:

Mol	Chain	Res	Type	Atoms	Z	Observed(°)	Ideal(°)
3	D	1	NAG	C1-O5-C5	6.98	121.65	112.19
2	C	1	NAG	C1-O5-C5	6.31	120.74	112.19
2	C	2	NAG	C1-O5-C5	5.87	120.15	112.19
2	C	3	BMA	C1-C2-C3	3.18	113.57	109.67
2	C	2	NAG	C4-C3-C2	2.68	114.95	111.02

There are no chirality outliers.

5 of 7 torsion outliers are listed below:

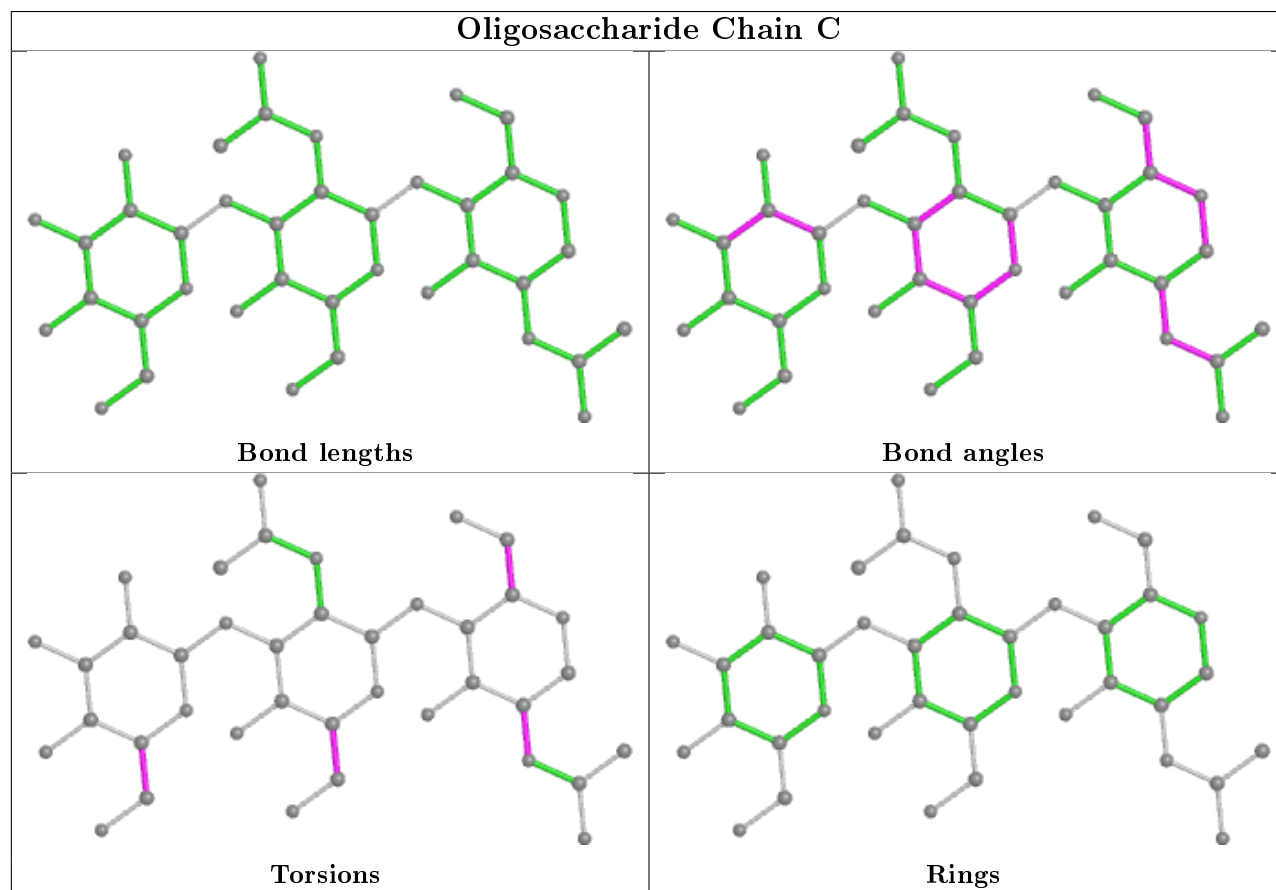
Mol	Chain	Res	Type	Atoms
2	C	3	BMA	O5-C5-C6-O6
2	C	3	BMA	C4-C5-C6-O6
2	C	1	NAG	O5-C5-C6-O6
2	C	2	NAG	C4-C5-C6-O6
2	C	1	NAG	C3-C2-N2-C7

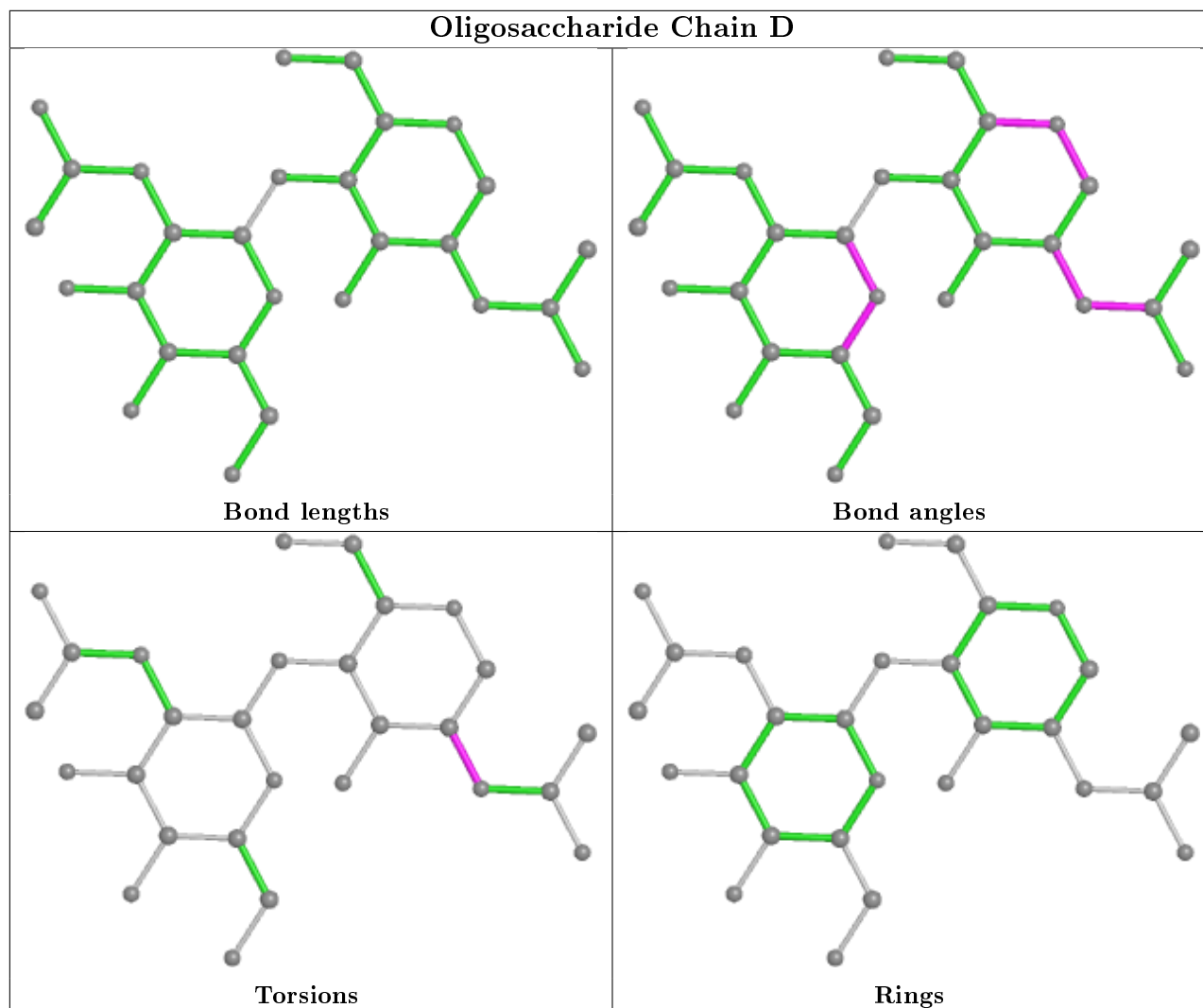
There are no ring outliers.

2 monomers are involved in 9 short contacts:

Mol	Chain	Res	Type	Clashes	Symm-Clashes
2	C	3	BMA	8	0
2	C	2	NAG	8	0

The following is a two-dimensional graphical depiction of Mogul quality analysis of bond lengths, bond angles, torsion angles, and ring geometry for oligosaccharide.





## 5.6 Ligand geometry [i](#)

4 ligands are modelled in this entry.

In the following table, the Counts columns list the number of bonds (or angles) for which Mogul statistics could be retrieved, the number of bonds (or angles) that are observed in the model and the number of bonds (or angles) that are defined in the Chemical Component Dictionary. The Link column lists molecule types, if any, to which the group is linked. The Z score for a bond length (or angle) is the number of standard deviations the observed value is removed from the expected value. A bond length (or angle) with  $|Z| > 2$  is considered an outlier worth inspection. RMSZ is the root-mean-square of all Z scores of the bond lengths (or angles).

Mol	Type	Chain	Res	Link	Bond lengths			Bond angles		
					Counts	RMSZ	# $ Z  > 2$	Counts	RMSZ	# $ Z  > 2$
4	NAG	A	805	1	14,14,15	0.54	0	17,19,21	1.16	2 (11%)
4	NAG	B	801	1	14,14,15	0.30	0	17,19,21	1.34	3 (17%)
4	NAG	A	804	1	14,14,15	0.36	0	17,19,21	1.45	4 (23%)



Mol	Type	Chain	Res	Link	Bond lengths			Bond angles		
					Counts	RMSZ	# Z  > 2	Counts	RMSZ	# Z  > 2
4	NAG	B	802	1	14,14,15	0.39	0	17,19,21	0.90	1 (5%)

In the following table, the Chirals column lists the number of chiral outliers, the number of chiral centers analysed, the number of these observed in the model and the number defined in the Chemical Component Dictionary. Similar counts are reported in the Torsion and Rings columns. '-' means no outliers of that kind were identified.

Mol	Type	Chain	Res	Link	Chirals	Torsions	Rings
4	NAG	A	805	1	-	2/6/23/26	0/1/1/1
4	NAG	B	801	1	-	3/6/23/26	0/1/1/1
4	NAG	A	804	1	-	3/6/23/26	0/1/1/1
4	NAG	B	802	1	-	2/6/23/26	0/1/1/1

There are no bond length outliers.

The worst 5 of 10 bond angle outliers are listed below:

Mol	Chain	Res	Type	Atoms	Z	Observed(°)	Ideal(°)
4	B	801	NAG	O5-C1-C2	-2.84	106.81	111.29
4	A	804	NAG	C8-C7-N2	2.77	120.79	116.10
4	B	801	NAG	C2-N2-C7	2.75	126.82	122.90
4	A	805	NAG	C2-N2-C7	2.71	126.77	122.90
4	A	804	NAG	O5-C1-C2	-2.68	107.05	111.29

There are no chirality outliers.

5 of 10 torsion outliers are listed below:

Mol	Chain	Res	Type	Atoms
4	A	805	NAG	C8-C7-N2-C2
4	A	805	NAG	O7-C7-N2-C2
4	B	801	NAG	C8-C7-N2-C2
4	B	801	NAG	O7-C7-N2-C2
4	A	804	NAG	C8-C7-N2-C2

There are no ring outliers.

No monomer is involved in short contacts.

## 5.7 Other polymers [i](#)

There are no such residues in this entry.

## 5.8 Polymer linkage issues

There are no chain breaks in this entry.

## 6 Fit of model and data [i](#)

### 6.1 Protein, DNA and RNA chains [i](#)

In the following table, the column labelled ‘#RSRZ> 2’ contains the number (and percentage) of RSRZ outliers, followed by percent RSRZ outliers for the chain as percentile scores relative to all X-ray entries and entries of similar resolution. The OWAB column contains the minimum, median, 95<sup>th</sup> percentile and maximum values of the occupancy-weighted average B-factor per residue. The column labelled ‘Q< 0.9’ lists the number of (and percentage) of residues with an average occupancy less than 0.9.

Mol	Chain	Analysed	<RSRZ>	#RSRZ>2	OWAB(Å <sup>2</sup> )	Q<0.9
1	A	190/333 (57%)	0.10	2 (1%) 80 78	71, 101, 137, 172	0
1	B	191/333 (57%)	0.26	6 (3%) 49 42	73, 117, 160, 191	0
All	All	381/666 (57%)	0.18	8 (2%) 63 58	71, 108, 154, 191	0

The worst 5 of 8 RSRZ outliers are listed below:

Mol	Chain	Res	Type	RSRZ
1	A	724	ALA	6.1
1	B	725	PHE	4.9
1	B	724	ALA	3.9
1	B	543	LEU	3.4
1	A	725	PHE	3.1

### 6.2 Non-standard residues in protein, DNA, RNA chains [i](#)

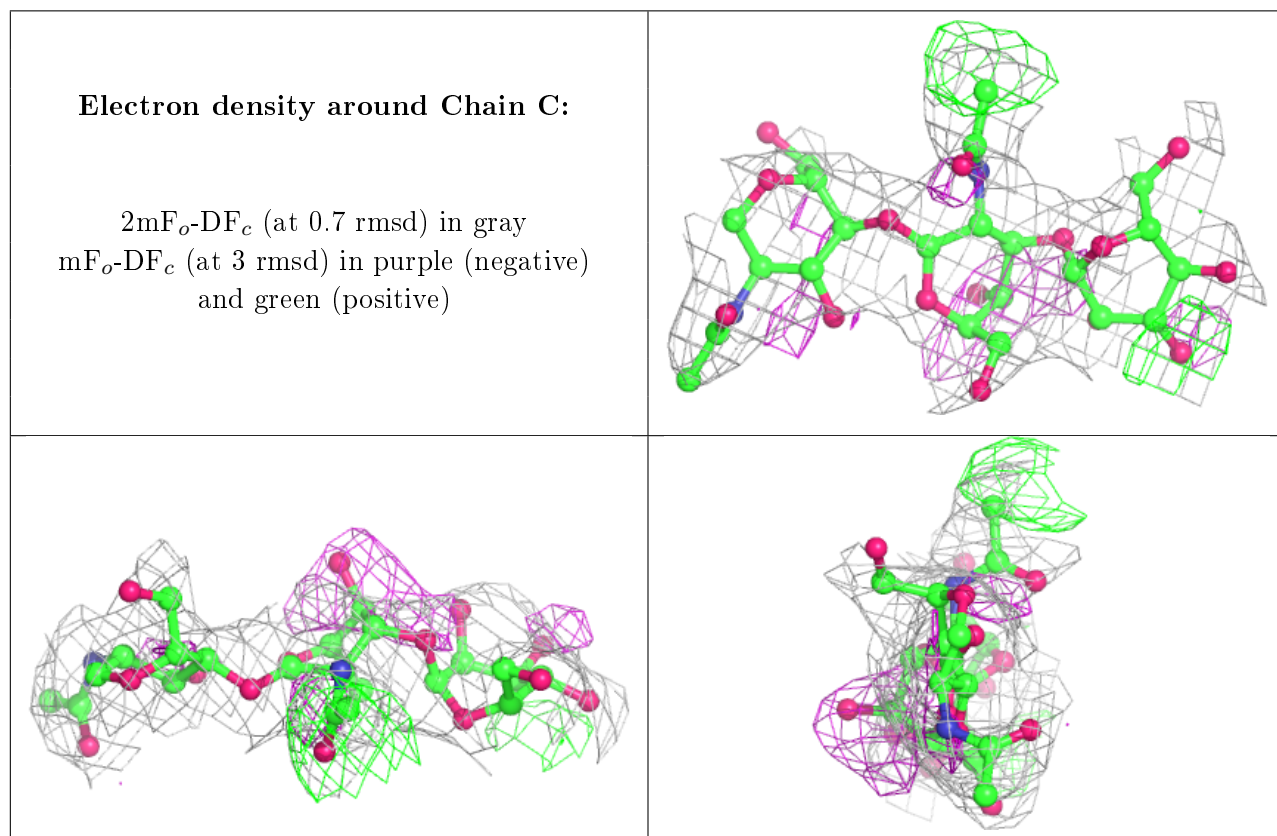
There are no non-standard protein/DNA/RNA residues in this entry.

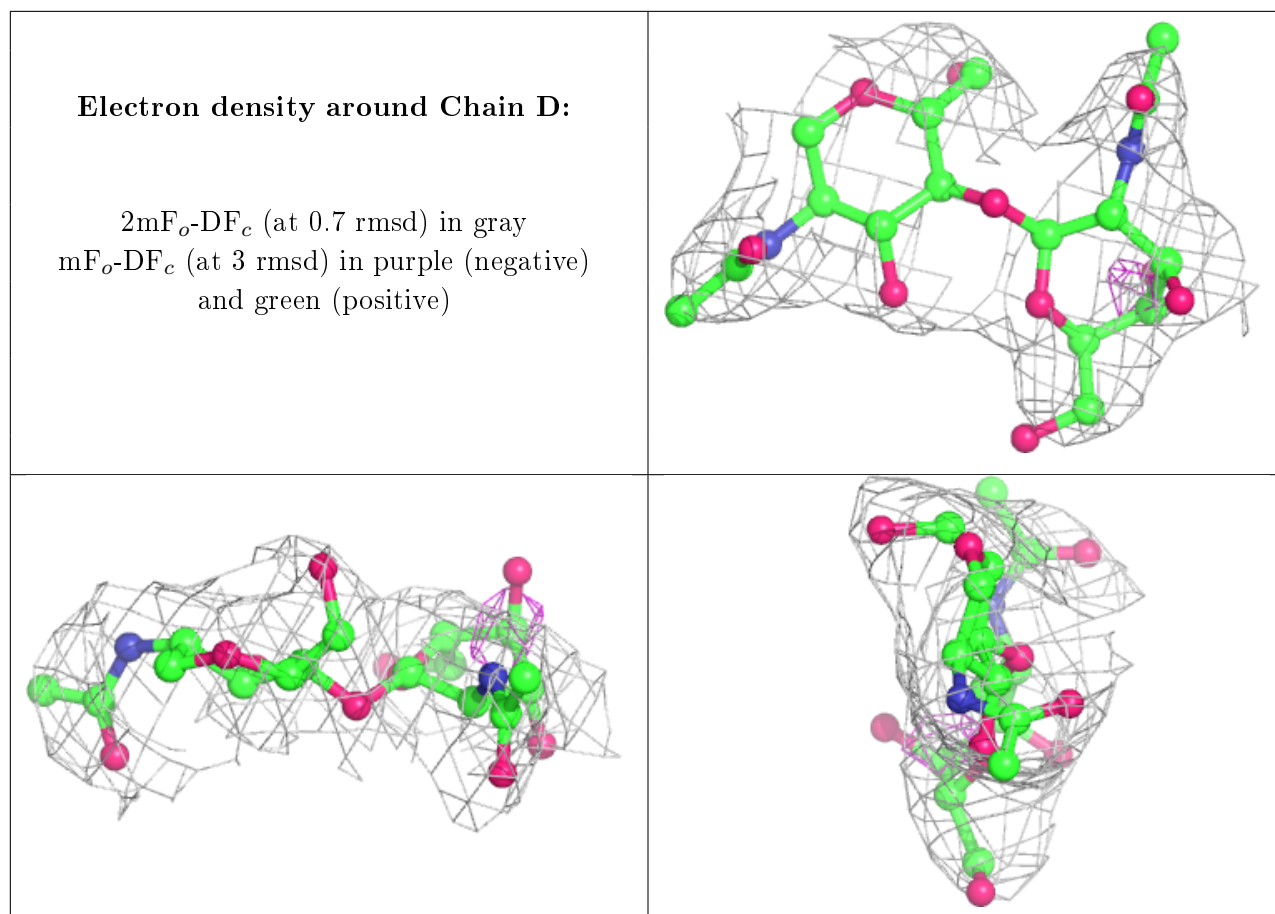
### 6.3 Carbohydrates [i](#)

In the following table, the Atoms column lists the number of modelled atoms in the group and the number defined in the chemical component dictionary. The B-factors column lists the minimum, median, 95<sup>th</sup> percentile and maximum values of B factors of atoms in the group. The column labelled ‘Q< 0.9’ lists the number of atoms with occupancy less than 0.9.

Mol	Type	Chain	Res	Atoms	RSCC	RSR	B-factors(Å <sup>2</sup> )	Q<0.9
2	BMA	C	3	11/12	0.64	0.17	122,137,146,148	0
2	NAG	C	2	14/15	0.71	0.25	117,128,146,149	0
2	NAG	C	1	14/15	0.87	0.24	103,127,135,137	0
3	NAG	D	2	14/15	0.89	0.24	134,145,158,159	0
3	NAG	D	1	14/15	0.93	0.10	103,121,126,137	0

The following is a graphical depiction of the model fit to experimental electron density for oligosaccharide. Each fit is shown from different orientation to approximate a three-dimensional view.





## 6.4 Ligands [i](#)

In the following table, the Atoms column lists the number of modelled atoms in the group and the number defined in the chemical component dictionary. The B-factors column lists the minimum, median, 95<sup>th</sup> percentile and maximum values of B factors of atoms in the group. The column labelled 'Q< 0.9' lists the number of atoms with occupancy less than 0.9.

Mol	Type	Chain	Res	Atoms	RSCC	RSR	B-factors(Å <sup>2</sup> )	Q<0.9
4	NAG	B	801	14/15	0.80	0.39	143,162,171,175	0
4	NAG	B	802	14/15	0.80	0.38	135,158,162,163	0
4	NAG	A	805	14/15	0.82	0.34	138,159,172,173	0
4	NAG	A	804	14/15	0.85	0.25	122,137,145,155	0

## 6.5 Other polymers [i](#)

There are no such residues in this entry.