



Full wwPDB X-ray Structure Validation Report ⓘ

Sep 12, 2023 – 10:45 AM EDT

PDB ID : 4N48
Title : Cap-specific mRNA (nucleoside-2'-O-)-methyltransferase 1 Protein in complex with capped RNA fragment
Authors : Smietanski, M.; Werener, M.; Purta, E.; Kaminska, K.H.; Stepinski, J.; Darzynkiewicz, E.; Nowotny, M.; Bujnicki, J.M.
Deposited on : 2013-10-08
Resolution : 2.70 Å(reported)

This is a Full wwPDB X-ray Structure Validation Report for a publicly released PDB entry.

We welcome your comments at validation@mail.wwpdb.org

A user guide is available at

<https://www.wwpdb.org/validation/2017/XrayValidationReportHelp>

with specific help available everywhere you see the ⓘ symbol.

The types of validation reports are described at

<http://www.wwpdb.org/validation/2017/FAQs#types>.

The following versions of software and data (see [references ⓘ](#)) were used in the production of this report:

MolProbity : 4.02b-467
Mogul : 1.8.5 (274361), CSD as541be (2020)
Xtrriage (Phenix) : 1.13
EDS : 2.35.1
buster-report : 1.1.7 (2018)
Percentile statistics : 20191225.v01 (using entries in the PDB archive December 25th 2019)
Refmac : 5.8.0158
CCP4 : 7.0.044 (Gargrove)
Ideal geometry (proteins) : Engh & Huber (2001)
Ideal geometry (DNA, RNA) : Parkinson et al. (1996)
Validation Pipeline (wwPDB-VP) : 2.35.1

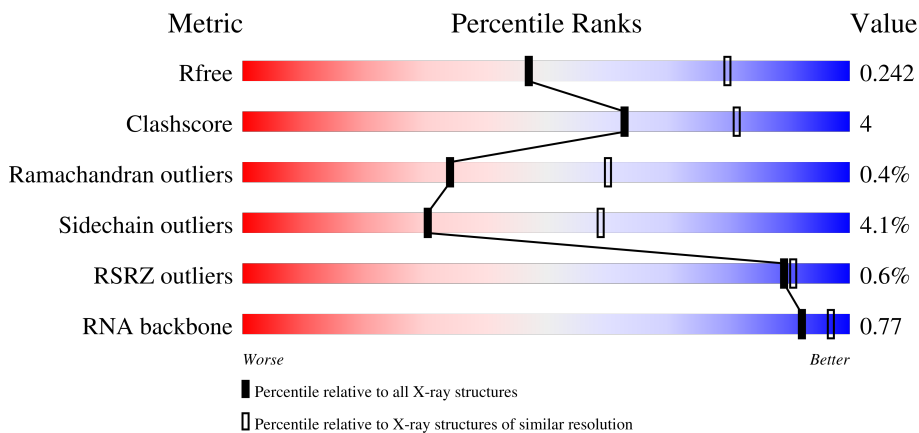
1 Overall quality at a glance i

The following experimental techniques were used to determine the structure:

X-RAY DIFFRACTION

The reported resolution of this entry is 2.70 Å.

Percentile scores (ranging between 0-100) for global validation metrics of the entry are shown in the following graphic. The table shows the number of entries on which the scores are based.




Metric	Whole archive (#Entries)	Similar resolution (#Entries, resolution range(Å))
R_{free}	130704	2808 (2.70-2.70)
Clashscore	141614	3122 (2.70-2.70)
Ramachandran outliers	138981	3069 (2.70-2.70)
Sidechain outliers	138945	3069 (2.70-2.70)
RSRZ outliers	127900	2737 (2.70-2.70)
RNA backbone	3102	1159 (3.00-2.40)

The table below summarises the geometric issues observed across the polymeric chains and their fit to the electron density. The red, orange, yellow and green segments of the lower bar indicate the fraction of residues that contain outliers for ≥ 3 , 2, 1 and 0 types of geometric quality criteria respectively. A grey segment represents the fraction of residues that are not modelled. The numeric value for each fraction is indicated below the corresponding segment, with a dot representing fractions $\leq 5\%$. The upper red bar (where present) indicates the fraction of residues that have poor fit to the electron density. The numeric value is given above the bar.

Mol	Chain	Length	Quality of chain
1	A	428	 82% 10% • 6%
1	B	428	 79% 15% 5%
2	D	4	 100%

Continued on next page...

Continued from previous page...

Mol	Chain	Length	Quality of chain
2	G	4	 <p>A horizontal bar chart representing the quality of chain. The bar is divided into three segments: a red segment on the left labeled '25%', a green segment in the middle labeled '75%', and a yellow segment on the right labeled '25%'. The segments are stacked horizontally, with the red segment starting from the left edge and the yellow segment ending at the right edge.</p>

2 Entry composition

There are 5 unique types of molecules in this entry. The entry contains 6807 atoms, of which 0 are hydrogens and 0 are deuteriums.

In the tables below, the ZeroOcc column contains the number of atoms modelled with zero occupancy, the AltConf column contains the number of residues with at least one atom in alternate conformation and the Trace column contains the number of residues modelled with at most 2 atoms.

- Molecule 1 is a protein called Cap-specific mRNA (nucleoside-2'-O-)-methyltransferase 1.

Mol	Chain	Residues	Atoms					ZeroOcc	AltConf	Trace
			Total	C	N	O	S			
1	A	401	Total	C	N	O	S	0	0	0
			3192	2035	540	591	26			
1	B	405	Total	C	N	O	S	0	0	0
			3219	2055	543	595	26			

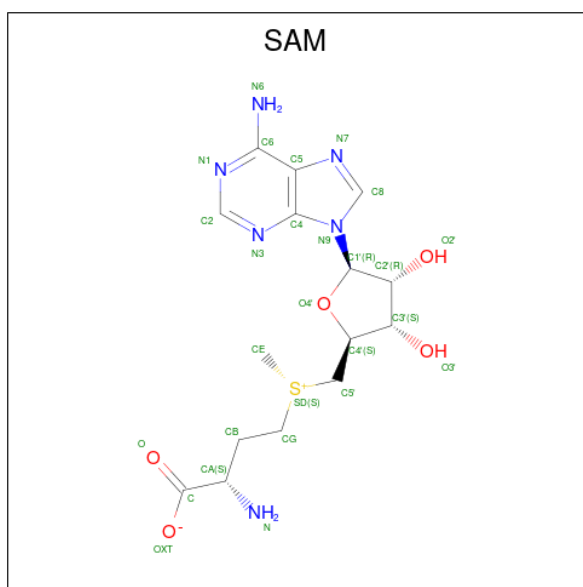
There are 6 discrepancies between the modelled and reference sequences:

Chain	Residue	Modelled	Actual	Comment	Reference
A	123	GLY	-	expression tag	UNP Q8N1G2
A	124	ALA	-	expression tag	UNP Q8N1G2
A	125	MET	-	expression tag	UNP Q8N1G2
B	123	GLY	-	expression tag	UNP Q8N1G2
B	124	ALA	-	expression tag	UNP Q8N1G2
B	125	MET	-	expression tag	UNP Q8N1G2

- Molecule 2 is a RNA chain called capped RNA.

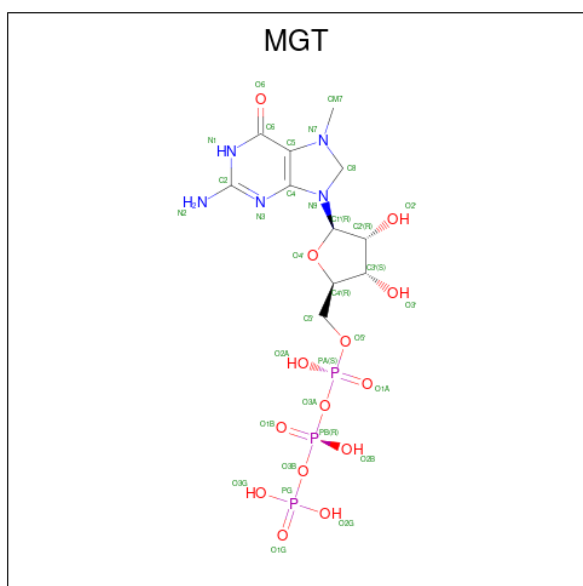
Mol	Chain	Residues	Atoms					ZeroOcc	AltConf	Trace
			Total	C	N	O	P			
2	D	4	Total	C	N	O	P	0	0	0
			66	29	12	22	3			
2	G	4	Total	C	N	O	P	0	0	0
			82	38	15	26	3			

- Molecule 3 is S-ADENOSYLMETHIONINE (three-letter code: SAM) (formula: C₁₅H₂₂N₆O₅S).



Mol	Chain	Residues	Atoms					ZeroOcc	AltConf
3	A	1	Total	C	N	O	S	0	0
			27	15	6	5	1		
3	B	1	Total	C	N	O	S	0	0
			27	15	6	5	1		

- Molecule 4 is 7N-METHYL-8-HYDROGUANOSINE-5'-TRIPHOSPHATE (three-letter code: MGT) (formula: C₁₁H₂₀N₅O₁₄P₃).



Mol	Chain	Residues	Atoms					ZeroOcc	AltConf
4	D	1	Total	C	N	O	P	0	0
			32	11	5	13	3		

Continued on next page...

Continued from previous page...

Mol	Chain	Residues	Atoms					ZeroOcc	AltConf
			Total	C	N	O	P		
4	G	1	32	11	5	13	3	0	0

- Molecule 5 is water.

Mol	Chain	Residues	Atoms		ZeroOcc	AltConf
5	A	57	Total	O	0	0
			57	57		
5	B	50	Total	O	0	0
			50	50		
5	D	10	Total	O	0	0
			10	10		
5	G	13	Total	O	0	0
			13	13		



4 Data and refinement statistics

Property	Value	Source
Space group	P 1	Depositor
Cell constants a, b, c, α , β , γ	52.21Å 60.04Å 87.05Å 90.23° 97.83° 116.25°	Depositor
Resolution (Å)	30.33 – 2.70 47.11 – 2.70	Depositor EDS
% Data completeness (in resolution range)	96.6 (30.33-2.70) 96.6 (47.11-2.70)	Depositor EDS
R_{merge}	(Not available)	Depositor
R_{sym}	(Not available)	Depositor
$\langle I/\sigma(I) \rangle$ ¹	1.34 (at 2.69Å)	Xtrriage
Refinement program	PHENIX (phenix.refine: 1.8.2_1309)	Depositor
R, R_{free}	0.182 , 0.241 0.182 , 0.242	Depositor DCC
R_{free} test set	1248 reflections (5.05%)	wwPDB-VP
Wilson B-factor (Å ²)	31.0	Xtrriage
Anisotropy	0.198	Xtrriage
Bulk solvent k_{sol} (e/Å ³), B_{sol} (Å ²)	0.39 , 50.3	EDS
L-test for twinning ²	$\langle L \rangle = 0.49$, $\langle L^2 \rangle = 0.32$	Xtrriage
Estimated twinning fraction	No twinning to report.	Xtrriage
F_o, F_c correlation	0.92	EDS
Total number of atoms	6807	wwPDB-VP
Average B, all atoms (Å ²)	28.0	wwPDB-VP

Xtrriage's analysis on translational NCS is as follows: *The largest off-origin peak in the Patterson function is 5.30% of the height of the origin peak. No significant pseudotranslation is detected.*

¹Intensities estimated from amplitudes.

²Theoretical values of $\langle |L| \rangle$, $\langle L^2 \rangle$ for acentric reflections are 0.5, 0.333 respectively for untwinned datasets, and 0.375, 0.2 for perfectly twinned datasets.

5 Model quality [i](#)

5.1 Standard geometry [i](#)

Bond lengths and bond angles in the following residue types are not validated in this section: SAM, MGT

The Z score for a bond length (or angle) is the number of standard deviations the observed value is removed from the expected value. A bond length (or angle) with $|Z| > 5$ is considered an outlier worth inspection. RMSZ is the root-mean-square of all Z scores of the bond lengths (or angles).

Mol	Chain	Bond lengths		Bond angles	
		RMSZ	# Z >5	RMSZ	# Z >5
1	A	0.26	0/3262	0.43	0/4405
1	B	0.26	0/3293	0.43	0/4450
2	D	0.29	0/73	0.77	0/113
2	G	0.28	0/91	0.74	0/140
All	All	0.26	0/6719	0.44	0/9108

There are no bond length outliers.

There are no bond angle outliers.

There are no chirality outliers.

There are no planarity outliers.

5.2 Too-close contacts [i](#)

In the following table, the Non-H and H(model) columns list the number of non-hydrogen atoms and hydrogen atoms in the chain respectively. The H(added) column lists the number of hydrogen atoms added and optimized by MolProbity. The Clashes column lists the number of clashes within the asymmetric unit, whereas Symm-Clashes lists symmetry-related clashes.

Mol	Chain	Non-H	H(model)	H(added)	Clashes	Symm-Clashes
1	A	3192	0	3095	27	0
1	B	3219	0	3113	30	0
2	D	66	0	32	0	0
2	G	82	0	44	1	0
3	A	27	0	22	1	0
3	B	27	0	22	1	0
4	D	32	0	16	0	0
4	G	32	0	16	0	0
5	A	57	0	0	1	0

Continued on next page...

Continued from previous page...

Mol	Chain	Non-H	H(model)	H(added)	Clashes	Symm-Clashes
5	B	50	0	0	2	0
5	D	10	0	0	0	0
5	G	13	0	0	0	0
All	All	6807	0	6360	56	0

The all-atom clashscore is defined as the number of clashes found per 1000 atoms (including hydrogen atoms). The all-atom clashscore for this structure is 4.

All (56) close contacts within the same asymmetric unit are listed below, sorted by their clash magnitude.

Atom-1	Atom-2	Interatomic distance (Å)	Clash overlap (Å)
1:B:176:VAL:HB	1:B:479:LEU:HB2	1.81	0.62
1:B:346:ARG:HD2	1:B:393:SER:HB3	1.83	0.60
1:B:457:ARG:NH2	1:B:458:ASP:OD1	2.34	0.60
1:A:288:LEU:HD22	1:A:320:LEU:HD13	1.82	0.60
1:A:386:CYS:SG	1:A:464:ASN:ND2	2.76	0.59
1:A:324:TYR:CZ	1:A:329:GLY:HA2	2.43	0.53
1:B:348:PHE:O	1:B:352:ASN:ND2	2.41	0.53
1:B:351:ASP:OD1	1:B:355:ARG:NH1	2.42	0.52
1:A:431:LYS:HD2	1:A:503:HIS:HE2	1.74	0.51
1:A:401:PHE:CZ	1:A:403:CYS:HB2	2.46	0.51
1:A:401:PHE:HB3	1:A:446:CYS:HB2	1.91	0.51
1:A:307:ASP:OD1	1:A:308:PHE:N	2.43	0.51
1:B:464:ASN:HA	1:B:467:LEU:HD12	1.91	0.51
1:B:157:TRP:CE3	1:B:426:ARG:HG3	2.46	0.51
1:B:255:ARG:NH2	5:B:721:HOH:O	2.42	0.50
1:B:189:GLU:OE1	1:B:487:LYS:NZ	2.44	0.50
1:A:342:ILE:HD13	1:A:389:LEU:HD23	1.94	0.49
1:A:320:LEU:H	1:A:320:LEU:HD12	1.77	0.49
1:A:242:ASN:C	1:A:242:ASN:HD22	2.15	0.49
1:B:315:SER:OG	1:B:316:ALA:N	2.46	0.48
1:B:335:ASP:HB3	1:B:338:ARG:HG3	1.95	0.48
1:B:310:LEU:HD21	1:B:321:PHE:HD2	1.78	0.47
1:B:146:GLU:OE1	1:B:513:LYS:NZ	2.31	0.47
1:B:364:ASP:HB3	3:B:601:SAM:HN2	1.78	0.47
1:A:310:LEU:HA	1:A:313:PHE:CD1	2.51	0.46
1:A:382:GLN:HE21	1:A:464:ASN:HD21	1.62	0.46
1:B:288:LEU:HD11	1:B:321:PHE:HB2	1.97	0.46
1:B:227:ILE:HA	1:B:532:ARG:HG3	1.97	0.46
1:A:188:THR:HG23	1:A:196:LEU:HD12	1.98	0.45
1:A:361:LEU:HD13	1:A:394:ILE:HD11	1.98	0.45

Continued on next page...

Continued from previous page...

Atom-1	Atom-2	Interatomic distance (Å)	Clash overlap (Å)
1:A:364:ASP:HB3	3:A:601:SAM:HN2	1.82	0.45
1:A:482:PRO:HB2	1:A:485:VAL:HG23	1.99	0.45
1:B:206:PHE:CD1	1:B:214:MET:HG3	2.51	0.45
1:A:546:ARG:HE	1:A:546:ARG:HB2	1.64	0.45
1:B:254:PRO:HB2	1:B:262:LEU:HD12	1.99	0.44
1:B:210:ASP:HB3	1:B:213:GLU:HB3	2.00	0.44
1:B:431:LYS:HD2	1:B:503:HIS:NE2	2.33	0.44
1:A:346:ARG:HD2	1:A:393:SER:HB3	1.99	0.43
1:B:421:TYR:HA	1:B:427:VAL:HG21	1.99	0.43
1:A:218:ARG:HD2	1:A:436:ARG:HD3	1.99	0.43
1:A:379:LEU:O	5:A:728:HOH:O	2.21	0.43
1:B:514:ILE:O	1:B:518:VAL:HG23	2.19	0.43
1:A:324:TYR:CE1	1:A:329:GLY:HA2	2.55	0.42
1:B:401:PHE:CZ	1:B:403:CYS:HB2	2.54	0.42
1:A:431:LYS:HD2	1:A:503:HIS:NE2	2.35	0.42
1:B:255:ARG:HA	1:B:261:PRO:HA	2.01	0.42
1:A:382:GLN:HE21	1:A:464:ASN:ND2	2.18	0.42
1:B:242:ASN:C	1:B:242:ASN:HD22	2.23	0.41
1:B:184:ILE:HD12	1:B:187:GLU:HG3	2.02	0.41
1:B:234:ASN:HB2	2:G:2:A:O3'	2.21	0.41
1:A:181:LYS:HB2	1:B:258:TYR:CD1	2.56	0.40
1:A:494:ASP:OD2	1:A:498:ARG:NH2	2.55	0.40
1:B:410:THR:HB	5:B:730:HOH:O	2.21	0.40
1:A:176:VAL:HB	1:A:479:LEU:HB2	2.04	0.40
1:B:484:GLU:CD	1:B:484:GLU:H	2.25	0.40
1:A:383:LEU:HD23	1:A:383:LEU:HA	1.97	0.40

There are no symmetry-related clashes.

5.3 Torsion angles [i](#)

5.3.1 Protein backbone [i](#)

In the following table, the Percentiles column shows the percent Ramachandran outliers of the chain as a percentile score with respect to all X-ray entries followed by that with respect to entries of similar resolution.

The Analysed column shows the number of residues for which the backbone conformation was analysed, and the total number of residues.

Mol	Chain	Analysed	Favoured	Allowed	Outliers	Percentiles	
1	A	395/428 (92%)	382 (97%)	12 (3%)	1 (0%)	41	66
1	B	401/428 (94%)	386 (96%)	13 (3%)	2 (0%)	29	54
All	All	796/856 (93%)	768 (96%)	25 (3%)	3 (0%)	34	60

All (3) Ramachandran outliers are listed below:

Mol	Chain	Res	Type
1	B	230	VAL
1	A	230	VAL
1	B	546	ARG

5.3.2 Protein sidechains [i](#)

In the following table, the Percentiles column shows the percent sidechain outliers of the chain as a percentile score with respect to all X-ray entries followed by that with respect to entries of similar resolution.

The Analysed column shows the number of residues for which the sidechain conformation was analysed, and the total number of residues.

Mol	Chain	Analysed	Rotameric	Outliers	Percentiles	
1	A	345/374 (92%)	331 (96%)	14 (4%)	30	59
1	B	346/374 (92%)	332 (96%)	14 (4%)	31	60
All	All	691/748 (92%)	663 (96%)	28 (4%)	30	59

All (28) residues with a non-rotameric sidechain are listed below:

Mol	Chain	Res	Type
1	A	141	VAL
1	A	163	THR
1	A	196	LEU
1	A	216	ARG
1	A	242	ASN
1	A	312	ASP
1	A	320	LEU
1	A	354	ASP
1	A	383	LEU
1	A	421	TYR
1	A	426	ARG
1	A	471	ARG
1	A	504	CYS

Continued on next page...

Continued from previous page...

Mol	Chain	Res	Type
1	A	546	ARG
1	B	163	THR
1	B	164	GLU
1	B	183	ILE
1	B	196	LEU
1	B	242	ASN
1	B	257	SER
1	B	290	ARG
1	B	330	ILE
1	B	362	MET
1	B	383	LEU
1	B	483	LEU
1	B	504	CYS
1	B	509	LYS
1	B	527	ARG

Sometimes sidechains can be flipped to improve hydrogen bonding and reduce clashes. All (1) such sidechains are listed below:

Mol	Chain	Res	Type
1	A	464	ASN

5.3.3 RNA [i](#)

Mol	Chain	Analysed	Backbone Outliers	Pucker Outliers
2	D	2/4 (50%)	0	0
2	G	3/4 (75%)	0	0
All	All	5/8 (62%)	0	0

There are no RNA backbone outliers to report.

There are no RNA pucker outliers to report.

5.4 Non-standard residues in protein, DNA, RNA chains [i](#)

There are no non-standard protein/DNA/RNA residues in this entry.

5.5 Carbohydrates [i](#)

There are no monosaccharides in this entry.

5.6 Ligand geometry

4 ligands are modelled in this entry.

In the following table, the Counts columns list the number of bonds (or angles) for which Mogul statistics could be retrieved, the number of bonds (or angles) that are observed in the model and the number of bonds (or angles) that are defined in the Chemical Component Dictionary. The Link column lists molecule types, if any, to which the group is linked. The Z score for a bond length (or angle) is the number of standard deviations the observed value is removed from the expected value. A bond length (or angle) with $|Z| > 2$ is considered an outlier worth inspection. RMSZ is the root-mean-square of all Z scores of the bond lengths (or angles).

Mol	Type	Chain	Res	Link	Bond lengths			Bond angles		
					Counts	RMSZ	# Z > 2	Counts	RMSZ	# Z > 2
3	SAM	A	601	-	24,29,29	2.03	8 (33%)	23,42,42	1.63	4 (17%)
4	MGT	D	101	2	27,34,35	4.79	6 (22%)	35,53,56	2.03	11 (31%)
3	SAM	B	601	-	24,29,29	2.06	6 (25%)	23,42,42	1.68	5 (21%)
4	MGT	G	101	2	27,34,35	4.71	6 (22%)	35,53,56	2.02	10 (28%)

In the following table, the Chirals column lists the number of chiral outliers, the number of chiral centers analysed, the number of these observed in the model and the number defined in the Chemical Component Dictionary. Similar counts are reported in the Torsion and Rings columns. '-' means no outliers of that kind were identified.

Mol	Type	Chain	Res	Link	Chirals	Torsions	Rings
3	SAM	A	601	-	-	1/12/33/33	0/3/3/3
4	MGT	D	101	2	-	5/19/49/50	0/3/3/3
3	SAM	B	601	-	-	1/12/33/33	0/3/3/3
4	MGT	G	101	2	-	7/19/49/50	0/3/3/3

All (26) bond length outliers are listed below:

Mol	Chain	Res	Type	Atoms	Z	Observed(Å)	Ideal(Å)
4	D	101	MGT	C8-N9	-21.41	1.34	1.46
4	G	101	MGT	C8-N9	-20.96	1.34	1.46
4	G	101	MGT	O6-C6	9.32	1.41	1.23
4	D	101	MGT	O6-C6	9.26	1.41	1.23
3	B	601	SAM	C2'-C1'	-6.41	1.44	1.53
3	A	601	SAM	C2'-C1'	-5.98	1.44	1.53
4	D	101	MGT	C2-N2	5.92	1.48	1.34
4	G	101	MGT	C2-N2	5.62	1.47	1.34
3	A	601	SAM	C6-N6	3.53	1.46	1.34
3	B	601	SAM	C6-N6	3.53	1.46	1.34
3	A	601	SAM	C3'-C4'	-3.46	1.44	1.53

Continued on next page...

Continued from previous page...

Mol	Chain	Res	Type	Atoms	Z	Observed(Å)	Ideal(Å)
3	B	601	SAM	C3'-C4'	-3.40	1.44	1.53
4	G	101	MGT	C2'-C3'	-2.81	1.45	1.53
4	G	101	MGT	C5'-C4'	-2.67	1.43	1.51
4	D	101	MGT	C5'-C4'	-2.63	1.43	1.51
4	D	101	MGT	C2'-C3'	-2.61	1.46	1.53
3	A	601	SAM	OXT-C	-2.43	1.22	1.30
4	D	101	MGT	C3'-C4'	-2.43	1.46	1.53
3	B	601	SAM	OXT-C	-2.39	1.22	1.30
4	G	101	MGT	C3'-C4'	-2.39	1.46	1.53
3	A	601	SAM	O-C	2.31	1.29	1.22
3	B	601	SAM	O-C	2.26	1.29	1.22
3	A	601	SAM	C2-N3	2.24	1.35	1.32
3	A	601	SAM	O2'-C2'	-2.12	1.38	1.43
3	A	601	SAM	C2'-C3'	-2.08	1.47	1.53
3	B	601	SAM	O2'-C2'	-2.03	1.38	1.43

All (30) bond angle outliers are listed below:

Mol	Chain	Res	Type	Atoms	Z	Observed(°)	Ideal(°)
4	D	101	MGT	C5-C6-N1	4.78	119.41	110.99
3	B	601	SAM	N3-C2-N1	-4.65	121.41	128.68
4	D	101	MGT	C2-N3-C4	4.53	120.37	112.30
4	G	101	MGT	C5-C6-N1	4.52	118.96	110.99
3	A	601	SAM	N3-C2-N1	-4.47	121.70	128.68
4	G	101	MGT	C2-N3-C4	4.27	119.91	112.30
4	G	101	MGT	N9-C8-N7	4.26	109.47	103.38
4	D	101	MGT	N9-C4-N3	4.25	131.82	125.47
4	D	101	MGT	N9-C8-N7	4.19	109.37	103.38
4	G	101	MGT	N9-C4-N3	4.08	131.57	125.47
4	D	101	MGT	C5-C4-N3	-3.91	120.69	128.13
4	G	101	MGT	C5-C4-N3	-3.89	120.73	128.13
4	G	101	MGT	PA-O3A-PB	-3.74	120.01	132.83
3	A	601	SAM	CG-SD-C5'	3.21	111.58	103.40
3	B	601	SAM	CG-SD-C5'	3.02	111.11	103.40
4	D	101	MGT	O5'-C5'-C4'	2.97	119.22	108.99
4	D	101	MGT	C6-C5-N7	2.90	136.48	131.91
3	B	601	SAM	O4'-C1'-C2'	-2.87	102.73	106.93
4	G	101	MGT	O5'-C5'-C4'	2.85	118.81	108.99
3	A	601	SAM	C4-C5-N7	-2.66	106.63	109.40
4	G	101	MGT	C6-C5-N7	2.63	136.04	131.91
4	D	101	MGT	C6-C5-C4	-2.61	117.24	122.62
3	A	601	SAM	O4'-C1'-C2'	-2.49	103.29	106.93

Continued on next page...

Continued from previous page...

Mol	Chain	Res	Type	Atoms	Z	Observed(°)	Ideal(°)
4	G	101	MGT	C6-C5-C4	-2.46	117.55	122.62
3	B	601	SAM	C4-C5-N7	-2.43	106.87	109.40
4	D	101	MGT	O6-C6-C5	-2.30	121.89	127.54
4	D	101	MGT	PA-O3A-PB	-2.26	125.07	132.83
4	G	101	MGT	O6-C6-C5	-2.14	122.29	127.54
4	D	101	MGT	C2-N1-C6	-2.10	121.26	125.10
3	B	601	SAM	OXT-C-CA	2.10	120.55	113.38

There are no chirality outliers.

All (14) torsion outliers are listed below:

Mol	Chain	Res	Type	Atoms
4	D	101	MGT	C5'-O5'-PA-O3A
4	D	101	MGT	C5'-O5'-PA-O1A
4	D	101	MGT	C5'-O5'-PA-O2A
4	G	101	MGT	C5'-O5'-PA-O3A
4	G	101	MGT	O4'-C4'-C5'-O5'
4	D	101	MGT	PA-O3A-PB-O1B
4	G	101	MGT	C3'-C4'-C5'-O5'
4	G	101	MGT	C5'-O5'-PA-O2A
3	A	601	SAM	CA-CB-CG-SD
3	B	601	SAM	CA-CB-CG-SD
4	G	101	MGT	PB-O3A-PA-O2A
4	D	101	MGT	PB-O3A-PA-O2A
4	G	101	MGT	PB-O3A-PA-O1A
4	G	101	MGT	C5'-O5'-PA-O1A

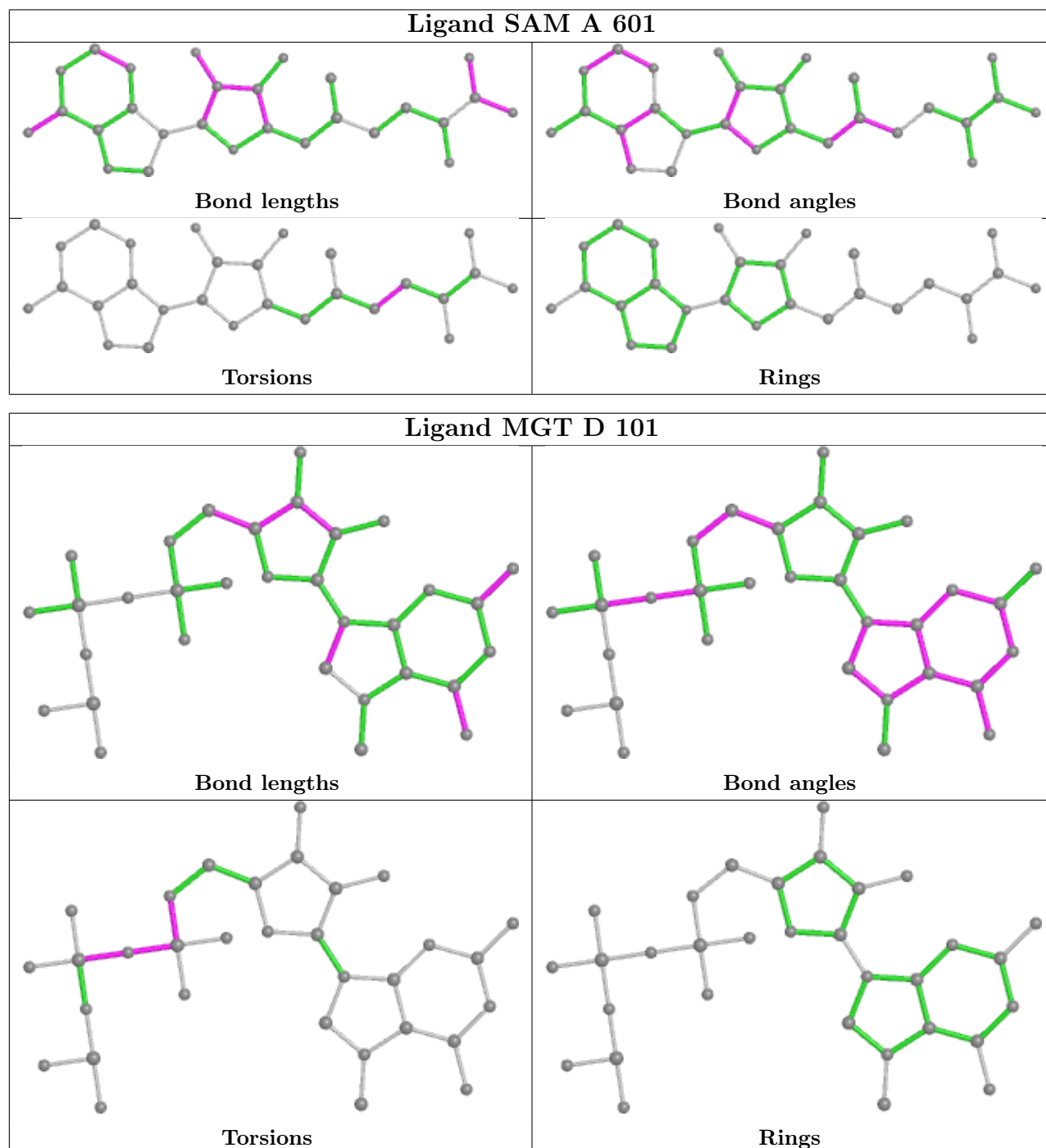
There are no ring outliers.

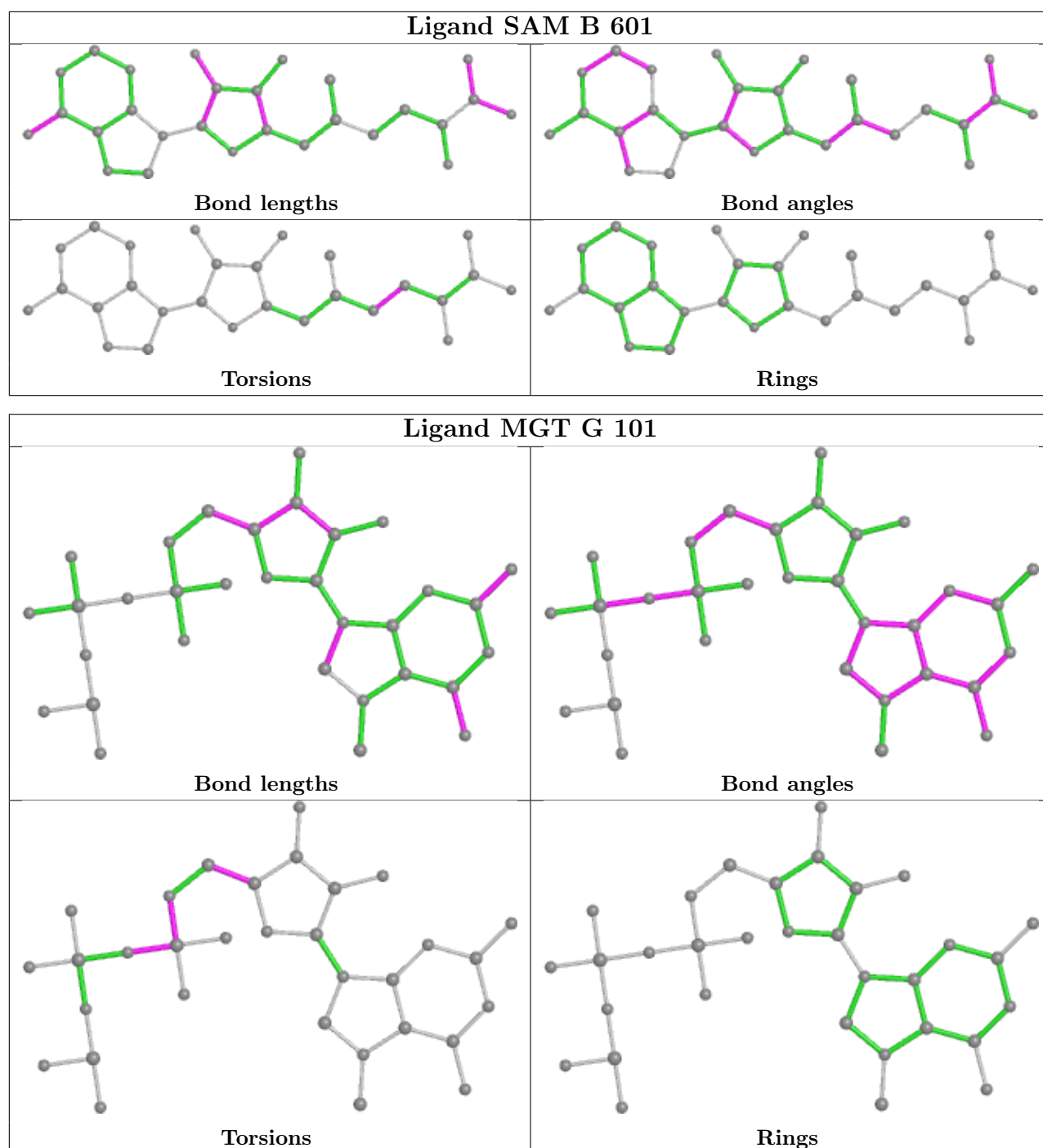
2 monomers are involved in 2 short contacts:

Mol	Chain	Res	Type	Clashes	Symm-Clashes
3	A	601	SAM	1	0
3	B	601	SAM	1	0

The following is a two-dimensional graphical depiction of Mogul quality analysis of bond lengths, bond angles, torsion angles, and ring geometry for all instances of the Ligand of Interest. In addition, ligands with molecular weight > 250 and outliers as shown on the validation Tables will also be included. For torsion angles, if less than 5% of the Mogul distribution of torsion angles is within 10 degrees of the torsion angle in question, then that torsion angle is considered an outlier. Any bond that is central to one or more torsion angles identified as an outlier by Mogul will be highlighted in the graph. For rings, the root-mean-square deviation (RMSD) between the ring in question and similar rings identified by Mogul is calculated over all ring torsion angles. If the

average RMSD is greater than 60 degrees and the minimal RMSD between the ring in question and any Mogul-identified rings is also greater than 60 degrees, then that ring is considered an outlier. The outliers are highlighted in purple. The color gray indicates Mogul did not find sufficient equivalents in the CSD to analyse the geometry.





5.7 Other polymers [\(i\)](#)

There are no such residues in this entry.

5.8 Polymer linkage issues [\(i\)](#)

There are no chain breaks in this entry.

6 Fit of model and data [i](#)

6.1 Protein, DNA and RNA chains [i](#)

In the following table, the column labelled ‘#RSRZ> 2’ contains the number (and percentage) of RSRZ outliers, followed by percent RSRZ outliers for the chain as percentile scores relative to all X-ray entries and entries of similar resolution. The OWAB column contains the minimum, median, 95th percentile and maximum values of the occupancy-weighted average B-factor per residue. The column labelled ‘Q< 0.9’ lists the number of (and percentage) of residues with an average occupancy less than 0.9.

Mol	Chain	Analysed	<RSRZ>	#RSRZ>2	OWAB(Å ²)	Q<0.9
1	A	401/428 (93%)	-0.10	2 (0%) 91 92	14, 25, 41, 60	1 (0%)
1	B	405/428 (94%)	-0.04	2 (0%) 91 92	18, 30, 45, 62	1 (0%)
2	D	4/4 (100%)	-0.33	0 100 100	20, 23, 30, 37	0
2	G	4/4 (100%)	0.87	1 (25%) 0 0	26, 29, 38, 55	0
All	All	814/864 (94%)	-0.07	5 (0%) 89 91	14, 27, 45, 62	2 (0%)

All (5) RSRZ outliers are listed below:

Mol	Chain	Res	Type	RSRZ
1	B	547	VAL	3.4
2	G	4	C	3.0
1	B	265	ASP	2.2
1	A	312	ASP	2.1
1	A	141	VAL	2.0

6.2 Non-standard residues in protein, DNA, RNA chains [i](#)

There are no non-standard protein/DNA/RNA residues in this entry.

6.3 Carbohydrates [i](#)

There are no monosaccharides in this entry.

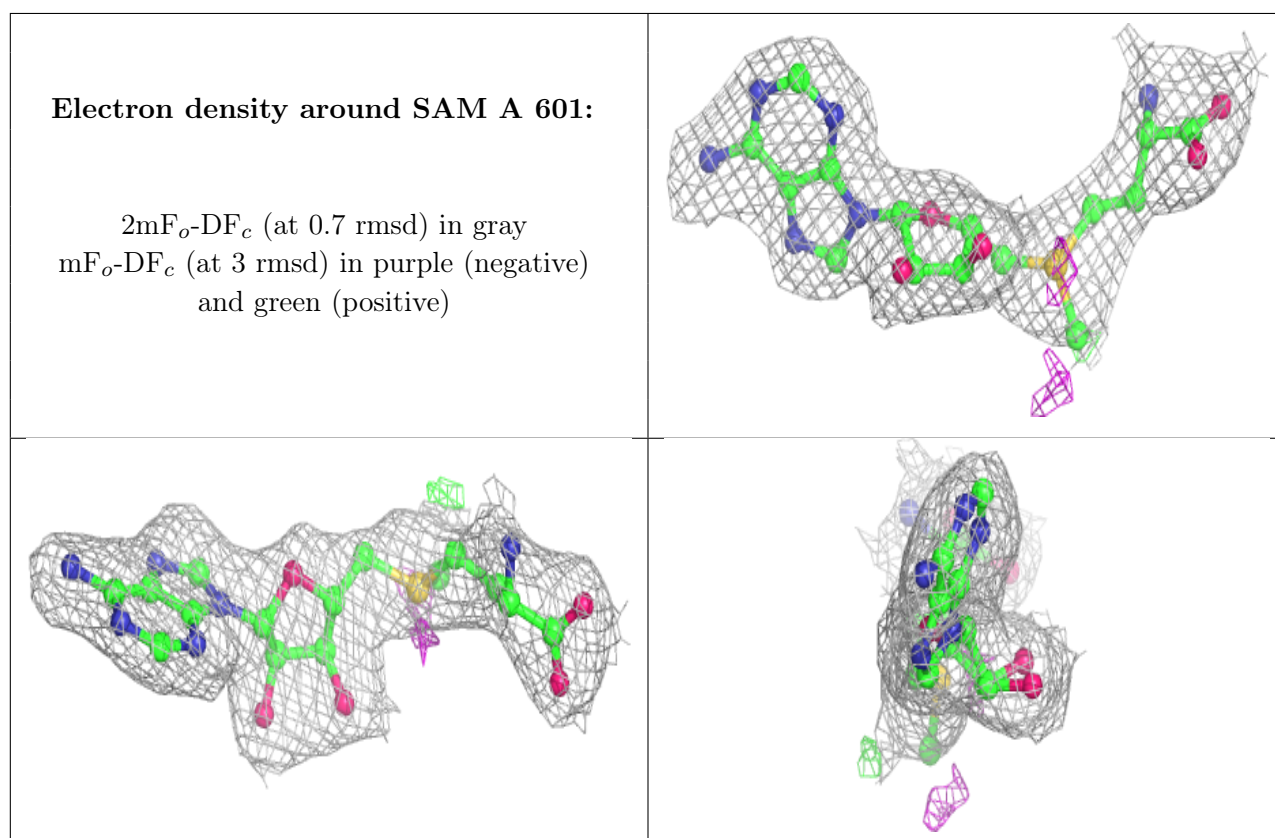
6.4 Ligands [i](#)

In the following table, the Atoms column lists the number of modelled atoms in the group and the number defined in the chemical component dictionary. The B-factors column lists the minimum,

median, 95th percentile and maximum values of B factors of atoms in the group. The column labelled 'Q< 0.9' lists the number of atoms with occupancy less than 0.9.

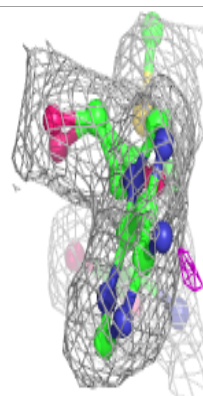
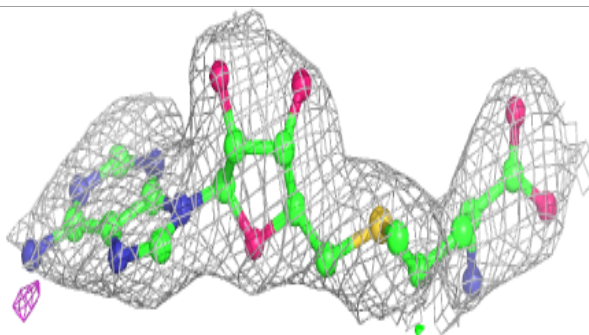
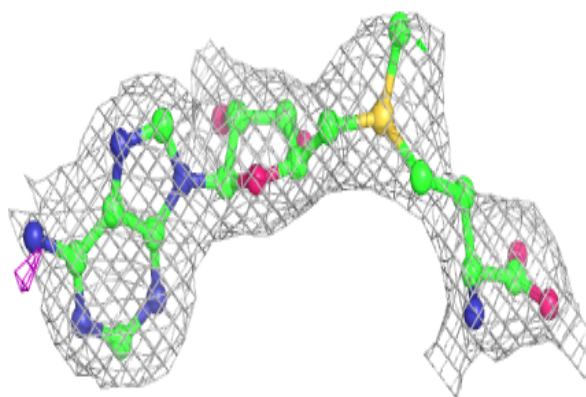
Mol	Type	Chain	Res	Atoms	RSCC	RSR	B-factors(Å ²)	Q<0.9
3	SAM	A	601	27/27	0.96	0.15	15,18,21,26	0
3	SAM	B	601	27/27	0.96	0.19	19,24,30,30	0
4	MGT	G	101	32/33	0.97	0.16	19,27,34,36	0
4	MGT	D	101	32/33	0.98	0.16	15,21,24,27	0

The following is a graphical depiction of the model fit to experimental electron density of all instances of the Ligand of Interest. In addition, ligands with molecular weight > 250 and outliers as shown on the geometry validation Tables will also be included. Each fit is shown from different orientation to approximate a three-dimensional view.

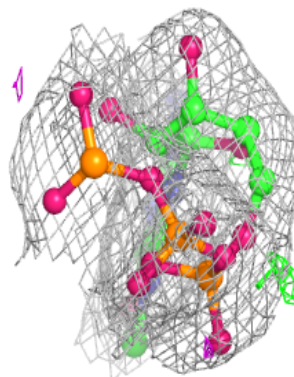
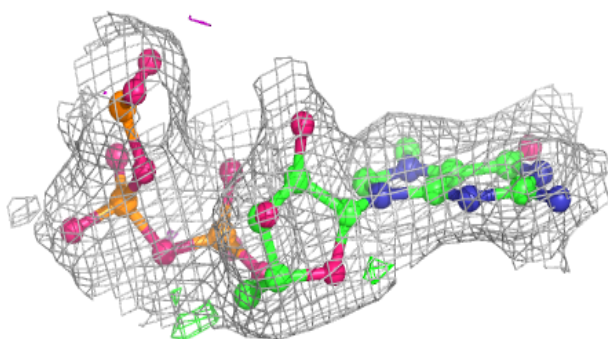
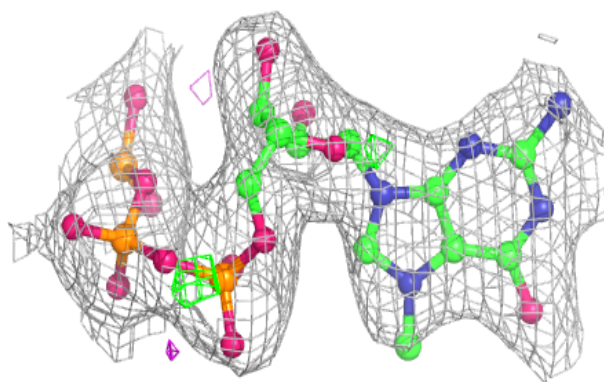


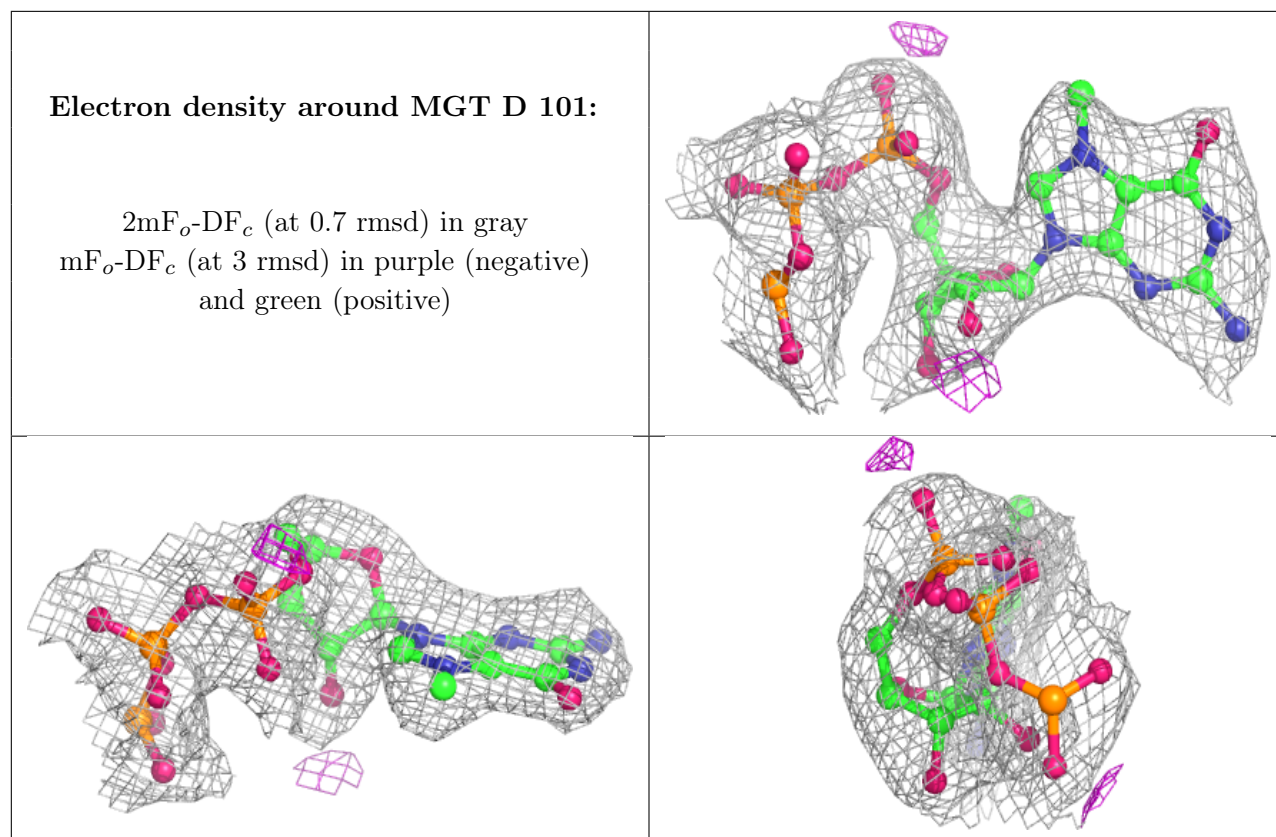
Electron density around SAM B 601:

$2mF_o-DF_c$ (at 0.7 rmsd) in gray
 mF_o-DF_c (at 3 rmsd) in purple (negative)
and green (positive)

**Electron density around MGT G 101:**

$2mF_o-DF_c$ (at 0.7 rmsd) in gray
 mF_o-DF_c (at 3 rmsd) in purple (negative)
and green (positive)





6.5 Other polymers [i](#)

There are no such residues in this entry.