



Full wwPDB X-ray Structure Validation Report ⓘ

Jun 11, 2024 – 07:56 PM EDT

PDB ID : 1N5L
Title : CRYSTAL STRUCTURE OF MYCOBACTERIUM TUBERCULOSIS THYMIDYLATE KINASE CRYSTALLIZED IN SODIUM MALONATE, AFTER CATALYSIS IN THE CRYSTAL (2.3 Å RESOLUTION)
Authors : Fioravanti, E.; Haouz, A.; Ursby, T.; Munier-Lehmann, H.; Delarue, M.; Bourgeois, D.
Deposited on : 2002-11-06
Resolution : 2.30 Å (reported)

This is a Full wwPDB X-ray Structure Validation Report for a publicly released PDB entry.

We welcome your comments at validation@mail.wwpdb.org

A user guide is available at

<https://www.wwpdb.org/validation/2017/XrayValidationReportHelp>

with specific help available everywhere you see the ⓘ symbol.

The types of validation reports are described at

<http://www.wwpdb.org/validation/2017/FAQs#types>.

The following versions of software and data (see [references](#) ①) were used in the production of this report:

MolProbity : 4.02b-467
Mogul : 2022.3.0, CSD as543be (2022)
Xtrriage (Phenix) : 1.20.1
EDS : 2.36.2
buster-report : 1.1.7 (2018)
Percentile statistics : 20191225.v01 (using entries in the PDB archive December 25th 2019)
Refmac : 5.8.0158
CCP4 : 7.0.044 (Gargrove)
Ideal geometry (proteins) : Engh & Huber (2001)
Ideal geometry (DNA, RNA) : Parkinson et al. (1996)
Validation Pipeline (wwPDB-VP) : 2.36.2

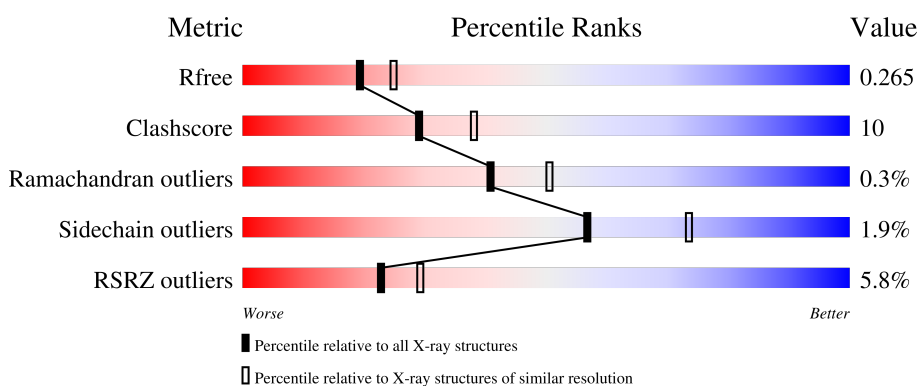
1 Overall quality at a glance i

The following experimental techniques were used to determine the structure:

X-RAY DIFFRACTION

The reported resolution of this entry is 2.30 Å.

Percentile scores (ranging between 0-100) for global validation metrics of the entry are shown in the following graphic. The table shows the number of entries on which the scores are based.



Metric	Whole archive (#Entries)	Similar resolution (#Entries, resolution range(Å))
R_{free}	130704	5042 (2.30-2.30)
Clashscore	141614	5643 (2.30-2.30)
Ramachandran outliers	138981	5575 (2.30-2.30)
Sidechain outliers	138945	5575 (2.30-2.30)
RSRZ outliers	127900	4938 (2.30-2.30)

The table below summarises the geometric issues observed across the polymeric chains and their fit to the electron density. The red, orange, yellow and green segments of the lower bar indicate the fraction of residues that contain outliers for ≥ 3 , 2, 1 and 0 types of geometric quality criteria respectively. A grey segment represents the fraction of residues that are not modelled. The numeric value for each fraction is indicated below the corresponding segment, with a dot representing fractions $\leq 5\%$. The upper red bar (where present) indicates the fraction of residues that have poor fit to the electron density. The numeric value is given above the bar.

Mol	Chain	Length	Quality of chain
1	A	214	<div style="display: flex; align-items: center;"> <div style="width: 4%; height: 10px; background-color: red; margin-right: 5px;"></div> <div style="width: 78%; height: 10px; background-color: green; margin-right: 5px;"></div> <div style="width: 13%; height: 10px; background-color: yellow; margin-right: 5px;"></div> <div style="width: 9%; height: 10px; background-color: grey;"></div> </div> <p style="text-align: center; margin-top: 5px;">4% 78% 13% 9%</p>
1	B	214	<div style="display: flex; align-items: center;"> <div style="width: 7%; height: 10px; background-color: red; margin-right: 5px;"></div> <div style="width: 75%; height: 10px; background-color: green; margin-right: 5px;"></div> <div style="width: 20%; height: 10px; background-color: yellow; margin-right: 5px;"></div> <div style="width: 5%; height: 10px; background-color: grey;"></div> </div> <p style="text-align: center; margin-top: 5px;">7% 75% 20% 5%</p>

The following table lists non-polymeric compounds, carbohydrate monomers and non-standard residues in protein, DNA, RNA chains that are outliers for geometric or electron-density-fit criteria:

Mol	Type	Chain	Res	Chirality	Geometry	Clashes	Electron density
2	ACT	A	412	-	-	X	-
3	TMP	A	409	-	-	X	X

2 Entry composition [i](#)

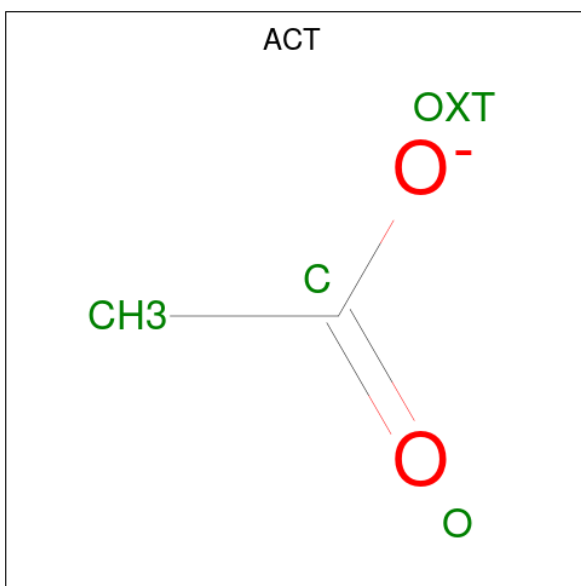
There are 7 unique types of molecules in this entry. The entry contains 3173 atoms, of which 0 are hydrogens and 0 are deuteriums.

In the tables below, the ZeroOcc column contains the number of atoms modelled with zero occupancy, the AltConf column contains the number of residues with at least one atom in alternate conformation and the Trace column contains the number of residues modelled with at most 2 atoms.

- Molecule 1 is a protein called THYMIDYLATE KINASE.

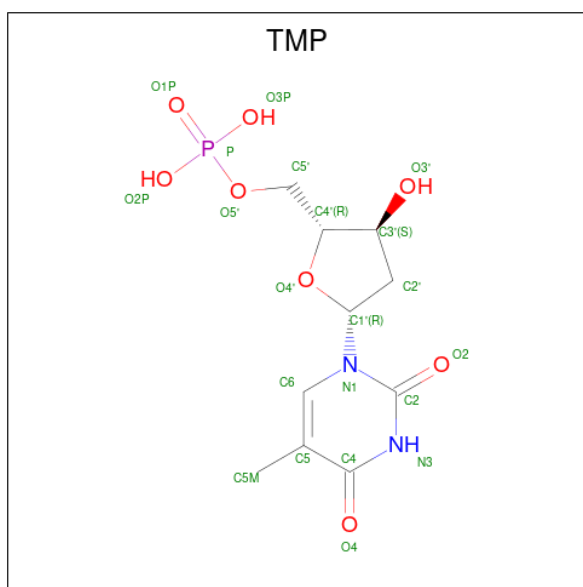
Mol	Chain	Residues	Atoms					ZeroOcc	AltConf	Trace
			Total	C	N	O	S			
1	A	195	Total 1412	C 894	N 256	O 259	S 3	0	0	0
1	B	203	Total 1493	C 937	N 274	O 279	S 3	0	0	0

- Molecule 2 is ACETATE ION (three-letter code: ACT) (formula: C₂H₃O₂).



Mol	Chain	Residues	Atoms			ZeroOcc	AltConf
			Total	C	O		
2	A	1	Total 4	C 2	O 2	0	0
2	A	1	Total 4	C 2	O 2	0	0

- Molecule 3 is THYMIDINE-5'-PHOSPHATE (three-letter code: TMP) (formula: C₁₀H₁₅N₂O₈P).

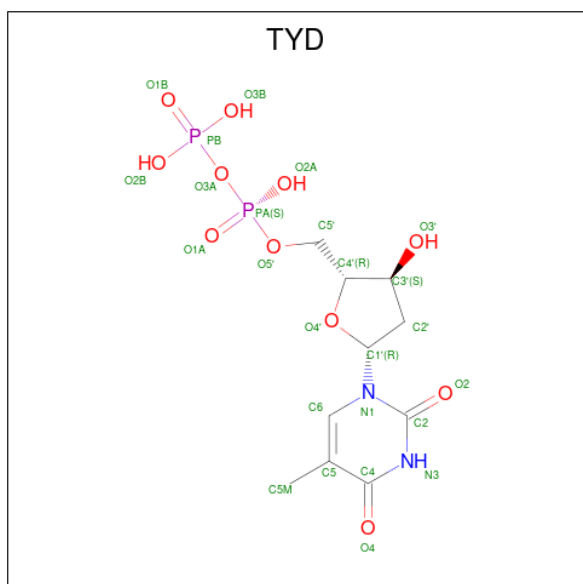


Mol	Chain	Residues	Atoms					ZeroOcc	AltConf
			Total	C	N	O	P		
3	A	1	21	10	2	8	1	0	0

- Molecule 4 is MAGNESIUM ION (three-letter code: MG) (formula: Mg).

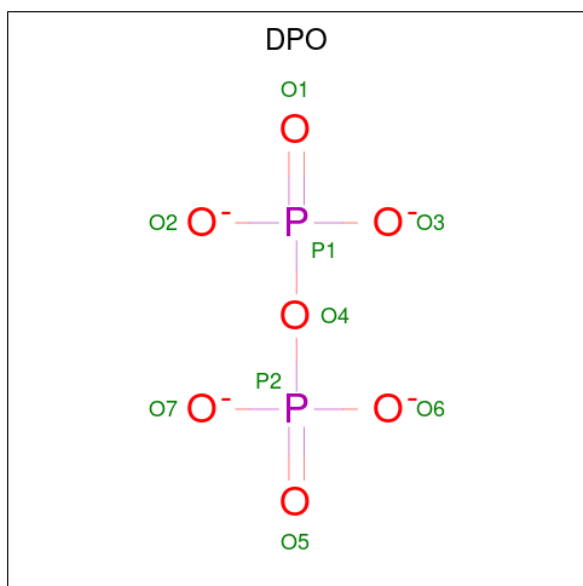
Mol	Chain	Residues	Atoms		ZeroOcc	AltConf
			Total	Mg		
4	B	1	1	1	0	0

- Molecule 5 is THYMIDINE-5'-DIPHOSPHATE (three-letter code: TYD) (formula: $C_{10}H_{16}N_2O_{11}P_2$).



Mol	Chain	Residues	Atoms				ZeroOcc	AltConf	
			Total	C	N	O			P
5	B	1	25	10	2	11	2	0	0

- Molecule 6 is DIPHOSPHATE (three-letter code: DPO) (formula: O_7P_2).



Mol	Chain	Residues	Atoms			ZeroOcc	AltConf
			Total	O	P		
6	B	1	8	6	2	0	0

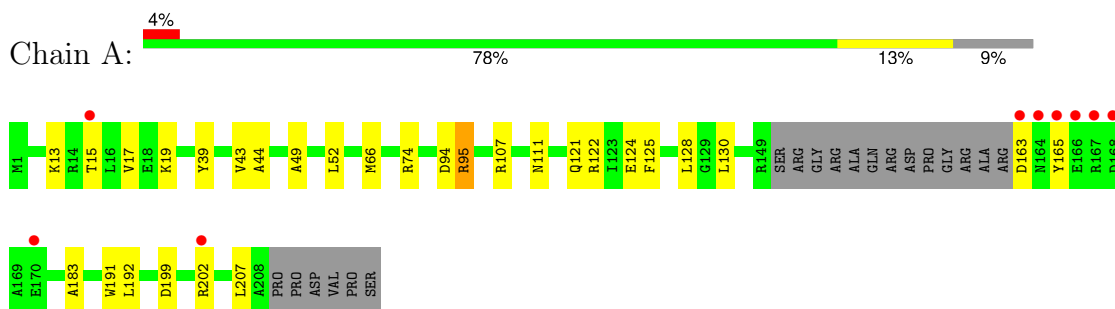
- Molecule 7 is water.

Mol	Chain	Residues	Atoms		ZeroOcc	AltConf
7	A	117	Total	O	0	0
			117	117		
7	B	88	Total	O	0	0
			88	88		

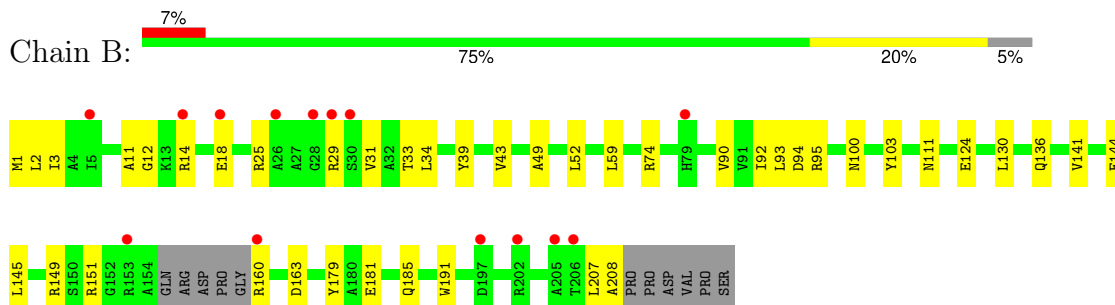
3 Residue-property plots [i](#)

These plots are drawn for all protein, RNA, DNA and oligosaccharide chains in the entry. The first graphic for a chain summarises the proportions of the various outlier classes displayed in the second graphic. The second graphic shows the sequence view annotated by issues in geometry and electron density. Residues are color-coded according to the number of geometric quality criteria for which they contain at least one outlier: green = 0, yellow = 1, orange = 2 and red = 3 or more. A red dot above a residue indicates a poor fit to the electron density ($RSRZ > 2$). Stretches of 2 or more consecutive residues without any outlier are shown as a green connector. Residues present in the sample, but not in the model, are shown in grey.

- Molecule 1: THYMIDYLATE KINASE



- Molecule 1: THYMIDYLATE KINASE



4 Data and refinement statistics

Property	Value	Source
Space group	P 31 2 1	Depositor
Cell constants a, b, c, α , β , γ	64.45Å 64.45Å 195.90Å 90.00° 90.00° 120.00°	Depositor
Resolution (Å)	19.76 – 2.30 19.76 – 2.30	Depositor EDS
% Data completeness (in resolution range)	99.1 (19.76-2.30) 99.3 (19.76-2.30)	Depositor EDS
R_{merge}	(Not available)	Depositor
R_{sym}	0.11	Depositor
$\langle I/\sigma(I) \rangle$ ¹	3.80 (at 2.30Å)	Xtrriage
Refinement program	CNS 1.0	Depositor
R, R_{free}	0.236 , 0.280 0.224 , 0.265	Depositor DCC
R_{free} test set	1054 reflections (4.88%)	wwPDB-VP
Wilson B-factor (Å ²)	31.0	Xtrriage
Anisotropy	0.659	Xtrriage
Bulk solvent k_{sol} (e/Å ³), B_{sol} (Å ²)	0.35 , 50.9	EDS
L-test for twinning ²	$\langle L \rangle = 0.51$, $\langle L^2 \rangle = 0.34$	Xtrriage
Estimated twinning fraction	0.036 for -h,-k,l	Xtrriage
F_o, F_c correlation	0.91	EDS
Total number of atoms	3173	wwPDB-VP
Average B, all atoms (Å ²)	35.0	wwPDB-VP

Xtrriage's analysis on translational NCS is as follows: *The largest off-origin peak in the Patterson function is 4.49% of the height of the origin peak. No significant pseudotranslation is detected.*

¹Intensities estimated from amplitudes.

²Theoretical values of $\langle |L| \rangle$, $\langle L^2 \rangle$ for acentric reflections are 0.5, 0.333 respectively for untwinned datasets, and 0.375, 0.2 for perfectly twinned datasets.

5 Model quality

5.1 Standard geometry

Bond lengths and bond angles in the following residue types are not validated in this section: MG, DPO, TMP, TYD, ACT

The Z score for a bond length (or angle) is the number of standard deviations the observed value is removed from the expected value. A bond length (or angle) with $|Z| > 5$ is considered an outlier worth inspection. RMSZ is the root-mean-square of all Z scores of the bond lengths (or angles).

Mol	Chain	Bond lengths		Bond angles	
		RMSZ	# Z >5	RMSZ	# Z >5
1	A	0.34	0/1437	0.53	0/1954
1	B	0.32	0/1518	0.53	0/2060
All	All	0.33	0/2955	0.53	0/4014

There are no bond length outliers.

There are no bond angle outliers.

There are no chirality outliers.

There are no planarity outliers.

5.2 Too-close contacts

In the following table, the Non-H and H(model) columns list the number of non-hydrogen atoms and hydrogen atoms in the chain respectively. The H(added) column lists the number of hydrogen atoms added and optimized by MolProbity. The Clashes column lists the number of clashes within the asymmetric unit, whereas Symm-Clashes lists symmetry-related clashes.

Mol	Chain	Non-H	H(model)	H(added)	Clashes	Symm-Clashes
1	A	1412	0	1380	27	0
1	B	1493	0	1466	30	0
2	A	8	0	6	2	0
3	A	21	0	13	7	0
4	B	1	0	0	0	0
5	B	25	0	13	1	0
6	B	8	0	0	1	0
7	A	117	0	0	1	0
7	B	88	0	0	1	0
All	All	3173	0	2878	56	0

The all-atom clashscore is defined as the number of clashes found per 1000 atoms (including

hydrogen atoms). The all-atom clashscore for this structure is 10.

All (56) close contacts within the same asymmetric unit are listed below, sorted by their clash magnitude.

Atom-1	Atom-2	Interatomic distance (Å)	Clash overlap (Å)
1:B:145:LEU:HD11	1:B:149:ARG:CZ	2.01	0.90
1:B:151:ARG:NH1	7:B:455:HOH:O	2.06	0.88
1:B:29:ARG:NH1	1:B:208:ALA:HB1	1.94	0.82
1:B:124:GLU:HB3	1:B:130:LEU:HD12	1.64	0.78
1:A:39:TYR:OH	3:A:409:TMP:H5'1	1.89	0.72
1:B:149:ARG:HH11	1:B:149:ARG:HG3	1.56	0.68
1:A:192:LEU:HD12	1:A:207:LEU:HD21	1.74	0.68
1:A:122:ARG:HE	2:A:412:ACT:H1	1.59	0.67
1:A:199:ASP:OD2	1:A:202:ARG:HG3	1.97	0.65
1:A:74:ARG:NH2	3:A:409:TMP:O4	2.24	0.65
1:A:94:ASP:O	1:A:95:ARG:HB2	1.98	0.63
1:A:74:ARG:HH12	3:A:409:TMP:C5M	2.11	0.63
1:B:3:ILE:HD13	1:B:207:LEU:HD13	1.82	0.62
1:B:149:ARG:HG3	1:B:149:ARG:NH1	2.15	0.60
1:B:33:THR:HG22	1:B:92:ILE:HB	1.84	0.60
1:B:2:LEU:HD11	1:B:93:LEU:HD11	1.83	0.59
1:A:39:TYR:OH	3:A:409:TMP:C5'	2.50	0.59
1:B:145:LEU:O	1:B:149:ARG:HG2	2.03	0.58
1:A:74:ARG:HB3	1:A:130:LEU:HD11	1.84	0.58
1:A:128:LEU:HD21	1:B:43:VAL:HG11	1.86	0.57
1:B:34:LEU:O	1:B:93:LEU:HA	2.07	0.55
1:A:39:TYR:HE1	3:A:409:TMP:O2P	1.91	0.54
1:B:111:ASN:HB2	1:B:181:GLU:OE1	2.08	0.54
1:B:94:ASP:O	1:B:95:ARG:HB2	2.06	0.54
1:B:14:ARG:O	1:B:18:GLU:HG3	2.07	0.54
1:B:25:ARG:HE	1:B:31:VAL:HB	1.72	0.53
1:A:13:LYS:HE3	1:A:95:ARG:HG3	1.91	0.51
1:B:12:GLY:HA2	6:B:414:DPO:P1	2.50	0.51
1:B:145:LEU:HD11	1:B:149:ARG:NH2	2.25	0.51
1:B:145:LEU:C	1:B:145:LEU:HD13	2.31	0.51
1:A:39:TYR:CE2	1:A:49:ALA:HB2	2.46	0.50
1:A:52:LEU:HG	1:A:66:MET:HE1	1.94	0.50
1:B:52:LEU:HB3	1:B:163:ASP:HB2	1.94	0.49
1:B:33:THR:HA	1:B:92:ILE:O	2.13	0.48
1:B:39:TYR:CE2	1:B:49:ALA:HB2	2.48	0.48
1:B:181:GLU:O	1:B:185:GLN:HG2	2.13	0.48
1:A:74:ARG:HH12	3:A:409:TMP:H53	1.78	0.47
1:A:107:ARG:HD2	1:A:165:TYR:CZ	2.49	0.47

Continued on next page...

Continued from previous page...

Atom-1	Atom-2	Interatomic distance (Å)	Clash overlap (Å)
1:B:103:TYR:CZ	5:B:216:TYD:H2'1	2.50	0.47
1:A:43:VAL:HG23	1:A:44:ALA:N	2.30	0.47
1:A:183:ALA:HA	1:A:191:TRP:CG	2.49	0.46
1:B:136:GLN:O	1:B:191:TRP:HA	2.16	0.46
1:A:74:ARG:HH12	3:A:409:TMP:H52	1.80	0.46
1:B:31:VAL:HG22	1:B:90:VAL:HB	1.98	0.46
1:A:95:ARG:HH21	1:A:95:ARG:HG2	1.81	0.45
1:A:52:LEU:HB3	1:A:163:ASP:HB2	2.00	0.44
1:B:144:GLU:H	1:B:144:GLU:CD	2.21	0.43
1:B:11:ALA:HA	1:B:141:VAL:HG21	2.01	0.43
1:B:145:LEU:O	1:B:145:LEU:HD13	2.19	0.43
1:A:124:GLU:HB3	1:A:130:LEU:HD12	2.00	0.43
1:B:74:ARG:NE	1:B:124:GLU:OE2	2.44	0.42
1:A:122:ARG:HE	2:A:412:ACT:CH3	2.27	0.42
1:A:121:GLN:HG3	1:A:125:PHE:HD1	1.84	0.41
1:A:15:THR:O	1:A:19:LYS:HG3	2.20	0.41
1:A:13:LYS:O	1:A:17:VAL:HG23	2.21	0.41
1:A:111:ASN:HB3	7:A:506:HOH:O	2.21	0.40

There are no symmetry-related clashes.

5.3 Torsion angles [i](#)

5.3.1 Protein backbone [i](#)

In the following table, the Percentiles column shows the percent Ramachandran outliers of the chain as a percentile score with respect to all X-ray entries followed by that with respect to entries of similar resolution.

The Analysed column shows the number of residues for which the backbone conformation was analysed, and the total number of residues.

Mol	Chain	Analysed	Favoured	Allowed	Outliers	Percentiles	
1	A	191/214 (89%)	185 (97%)	5 (3%)	1 (0%)	29	35
1	B	199/214 (93%)	192 (96%)	7 (4%)	0	100	100
All	All	390/428 (91%)	377 (97%)	12 (3%)	1 (0%)	41	50

All (1) Ramachandran outliers are listed below:

Mol	Chain	Res	Type
1	A	95	ARG

5.3.2 Protein sidechains [i](#)

In the following table, the Percentiles column shows the percent sidechain outliers of the chain as a percentile score with respect to all X-ray entries followed by that with respect to entries of similar resolution.

The Analysed column shows the number of residues for which the sidechain conformation was analysed, and the total number of residues.

Mol	Chain	Analysed	Rotameric	Outliers	Percentiles	
1	A	124/149 (83%)	124 (100%)	0	100	100
1	B	135/149 (91%)	130 (96%)	5 (4%)	34	48
All	All	259/298 (87%)	254 (98%)	5 (2%)	57	73

All (5) residues with a non-rotameric sidechain are listed below:

Mol	Chain	Res	Type
1	B	1	MET
1	B	59	LEU
1	B	100	ASN
1	B	160	ARG
1	B	179	TYR

Sometimes sidechains can be flipped to improve hydrogen bonding and reduce clashes. All (7) such sidechains are listed below:

Mol	Chain	Res	Type
1	A	82	GLN
1	A	173	GLN
1	A	185	GLN
1	B	41	GLN
1	B	82	GLN
1	B	121	GLN
1	B	173	GLN

5.3.3 RNA [i](#)

There are no RNA molecules in this entry.

5.4 Non-standard residues in protein, DNA, RNA chains [i](#)

There are no non-standard protein/DNA/RNA residues in this entry.

5.5 Carbohydrates [i](#)

There are no monosaccharides in this entry.

5.6 Ligand geometry [i](#)

Of 6 ligands modelled in this entry, 1 is monoatomic - leaving 5 for Mogul analysis.

In the following table, the Counts columns list the number of bonds (or angles) for which Mogul statistics could be retrieved, the number of bonds (or angles) that are observed in the model and the number of bonds (or angles) that are defined in the Chemical Component Dictionary. The Link column lists molecule types, if any, to which the group is linked. The Z score for a bond length (or angle) is the number of standard deviations the observed value is removed from the expected value. A bond length (or angle) with $|Z| > 2$ is considered an outlier worth inspection. RMSZ is the root-mean-square of all Z scores of the bond lengths (or angles).

Mol	Type	Chain	Res	Link	Bond lengths			Bond angles		
					Counts	RMSZ	# Z > 2	Counts	RMSZ	# Z > 2
6	DPO	B	414	-	3,7,8	1.60	0	6,10,13	5.09	5 (83%)
3	TMP	A	409	-	22,22,22	1.75	4 (18%)	32,33,33	1.92	6 (18%)
2	ACT	A	413	-	3,3,3	1.30	1 (33%)	3,3,3	0.73	0
5	TYD	B	216	4	22,26,26	1.78	4 (18%)	29,40,40	2.43	3 (10%)
2	ACT	A	412	-	3,3,3	1.12	0	3,3,3	0.73	0

In the following table, the Chirals column lists the number of chiral outliers, the number of chiral centers analysed, the number of these observed in the model and the number defined in the Chemical Component Dictionary. Similar counts are reported in the Torsion and Rings columns. '-' means no outliers of that kind were identified.

Mol	Type	Chain	Res	Link	Chirals	Torsions	Rings
6	DPO	B	414	-	-	1/2/5/6	-
3	TMP	A	409	-	-	2/10/22/22	0/2/2/2
5	TYD	B	216	4	-	4/13/28/28	0/2/2/2

All (9) bond length outliers are listed below:

Mol	Chain	Res	Type	Atoms	Z	Observed(Å)	Ideal(Å)
5	B	216	TYD	C6-N1	4.83	1.41	1.33

Continued on next page...

Continued from previous page...

Mol	Chain	Res	Type	Atoms	Z	Observed(Å)	Ideal(Å)
5	B	216	TYD	C4-N3	4.50	1.40	1.33
3	A	409	TMP	P-O2P	4.02	1.69	1.54
3	A	409	TMP	P-O1P	3.71	1.62	1.50
3	A	409	TMP	P-O3P	3.49	1.67	1.54
3	A	409	TMP	C6-C5	2.94	1.39	1.34
5	B	216	TYD	PB-O3B	-2.26	1.46	1.54
2	A	413	ACT	O-C	2.16	1.31	1.22
5	B	216	TYD	PA-O2A	-2.11	1.45	1.55

All (14) bond angle outliers are listed below:

Mol	Chain	Res	Type	Atoms	Z	Observed(°)	Ideal(°)
5	B	216	TYD	C2-N3-C4	11.87	125.11	115.09
6	B	414	DPO	O7-P2-O4	-8.52	76.20	104.64
6	B	414	DPO	O7-P2-O5	-6.00	87.47	110.83
3	A	409	TMP	C2'-C1'-N1	5.34	127.16	113.81
6	B	414	DPO	O7-P2-O6	-5.06	88.84	107.80
3	A	409	TMP	C1'-N1-C6	-4.82	112.65	120.74
3	A	409	TMP	C6-N1-C2	3.70	124.98	121.30
6	B	414	DPO	O6-P2-O4	3.65	116.81	104.64
3	A	409	TMP	O4'-C1'-N1	3.65	114.33	107.86
3	A	409	TMP	O4'-C1'-C2'	2.78	111.43	106.25
3	A	409	TMP	C1'-N1-C2	2.41	122.37	117.66
5	B	216	TYD	O3'-C3'-C4'	-2.19	101.75	110.07
6	B	414	DPO	O6-P2-O5	2.19	119.37	110.83
5	B	216	TYD	O4'-C1'-N1	2.03	111.44	108.75

There are no chirality outliers.

All (7) torsion outliers are listed below:

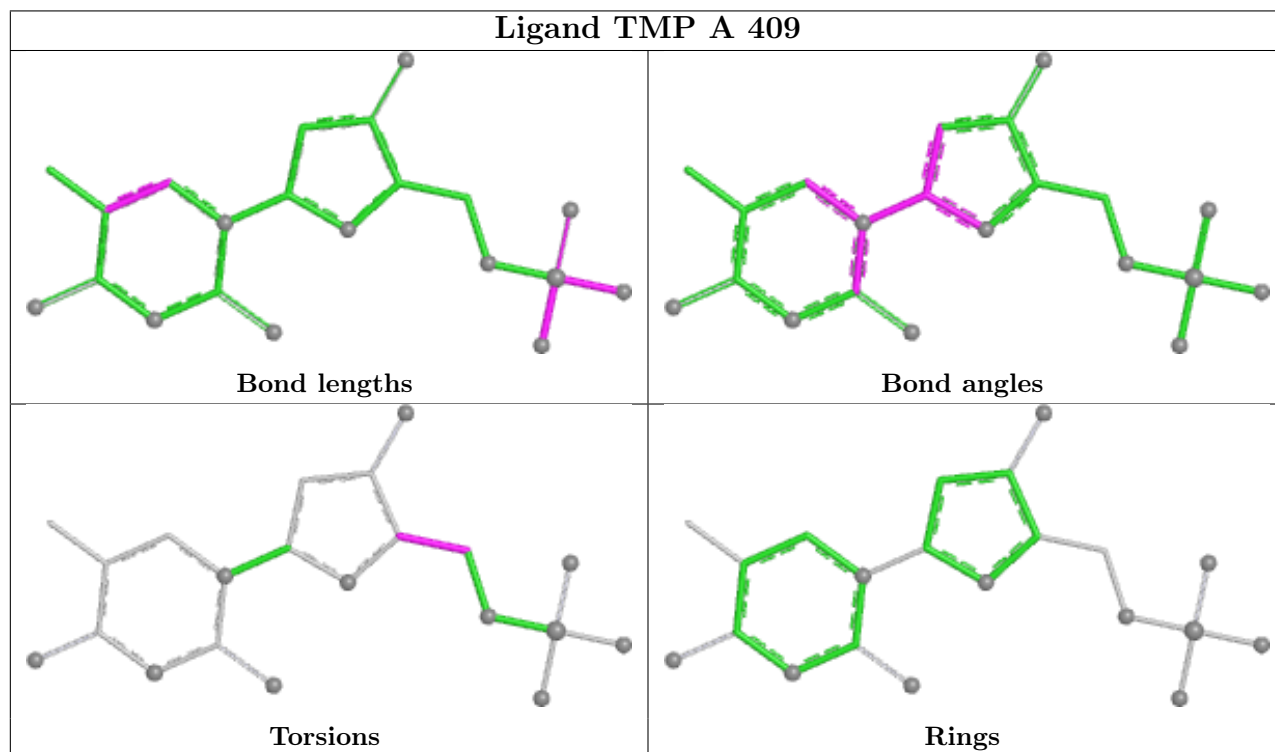
Mol	Chain	Res	Type	Atoms
5	B	216	TYD	PA-O3A-PB-O2B
5	B	216	TYD	O4'-C1'-N1-C6
3	A	409	TMP	O4'-C4'-C5'-O5'
3	A	409	TMP	C3'-C4'-C5'-O5'
5	B	216	TYD	PA-O3A-PB-O3B
6	B	414	DPO	P1-O4-P2-O6
5	B	216	TYD	C4'-C5'-O5'-PA

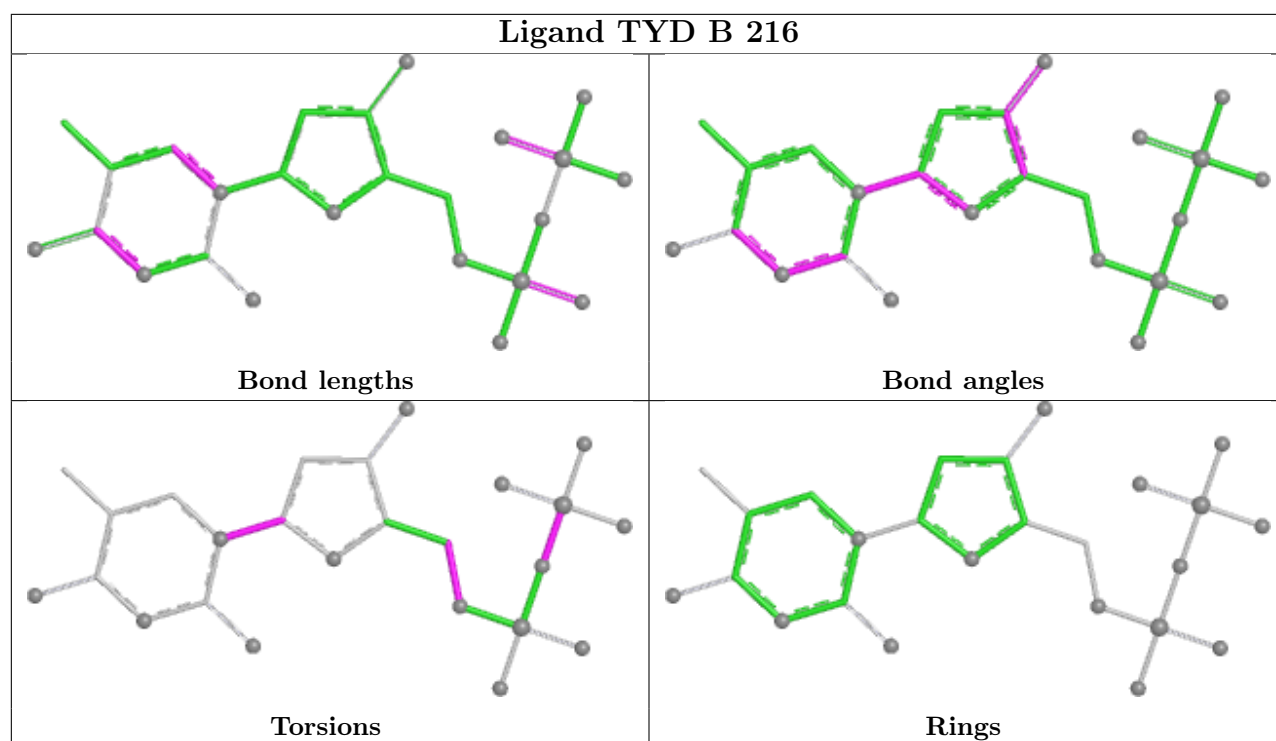
There are no ring outliers.

4 monomers are involved in 11 short contacts:

Mol	Chain	Res	Type	Clashes	Symm-Clashes
6	B	414	DPO	1	0
3	A	409	TMP	7	0
5	B	216	TYD	1	0
2	A	412	ACT	2	0

The following is a two-dimensional graphical depiction of Mogul quality analysis of bond lengths, bond angles, torsion angles, and ring geometry for all instances of the Ligand of Interest. In addition, ligands with molecular weight > 250 and outliers as shown on the validation Tables will also be included. For torsion angles, if less than 5% of the Mogul distribution of torsion angles is within 10 degrees of the torsion angle in question, then that torsion angle is considered an outlier. Any bond that is central to one or more torsion angles identified as an outlier by Mogul will be highlighted in the graph. For rings, the root-mean-square deviation (RMSD) between the ring in question and similar rings identified by Mogul is calculated over all ring torsion angles. If the average RMSD is greater than 60 degrees and the minimal RMSD between the ring in question and any Mogul-identified rings is also greater than 60 degrees, then that ring is considered an outlier. The outliers are highlighted in purple. The color gray indicates Mogul did not find sufficient equivalents in the CSD to analyse the geometry.





5.7 Other polymers [i](#)

There are no such residues in this entry.

5.8 Polymer linkage issues [i](#)

There are no chain breaks in this entry.

6 Fit of model and data

6.1 Protein, DNA and RNA chains

In the following table, the column labelled ‘#RSRZ > 2’ contains the number (and percentage) of RSRZ outliers, followed by percent RSRZ outliers for the chain as percentile scores relative to all X-ray entries and entries of similar resolution. The OWAB column contains the minimum, median, 95th percentile and maximum values of the occupancy-weighted average B-factor per residue. The column labelled ‘Q < 0.9’ lists the number of (and percentage) of residues with an average occupancy less than 0.9.

Mol	Chain	Analysed	<RSRZ>	#RSRZ>2	OWAB(Å ²)	Q<0.9
1	A	195/214 (91%)	0.17	9 (4%) 32 39	20, 29, 54, 75	0
1	B	203/214 (94%)	0.43	14 (6%) 16 22	21, 36, 58, 64	0
All	All	398/428 (92%)	0.30	23 (5%) 23 29	20, 32, 58, 75	0

All (23) RSRZ outliers are listed below:

Mol	Chain	Res	Type	RSRZ
1	A	167	ARG	5.9
1	A	164	ASN	5.5
1	A	166	GLU	5.1
1	A	163	ASP	4.9
1	B	197	ASP	4.4
1	B	79	HIS	4.0
1	B	160	ARG	3.8
1	B	206	THR	3.7
1	B	26	ALA	3.5
1	A	165	TYR	3.4
1	A	170	GLU	3.3
1	B	28	GLY	3.2
1	A	202	ARG	3.2
1	B	205	ALA	3.0
1	B	18	GLU	3.0
1	A	168	ASP	2.9
1	B	29	ARG	2.7
1	B	5	ILE	2.6
1	B	153	ARG	2.5
1	A	15	THR	2.4
1	B	14	ARG	2.2
1	B	30	SER	2.0
1	B	202	ARG	2.0

6.2 Non-standard residues in protein, DNA, RNA chains [i](#)

There are no non-standard protein/DNA/RNA residues in this entry.

6.3 Carbohydrates [i](#)

There are no monosaccharides in this entry.

6.4 Ligands [i](#)

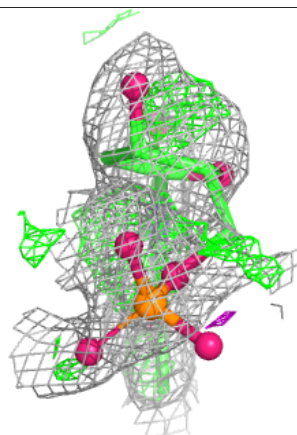
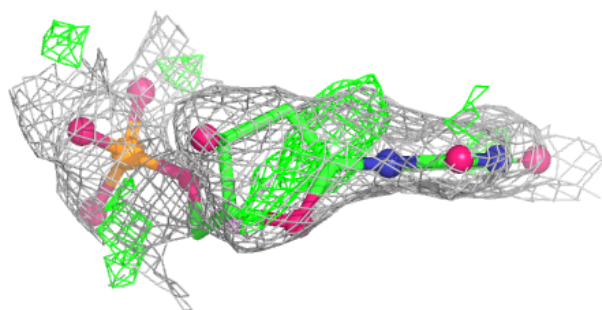
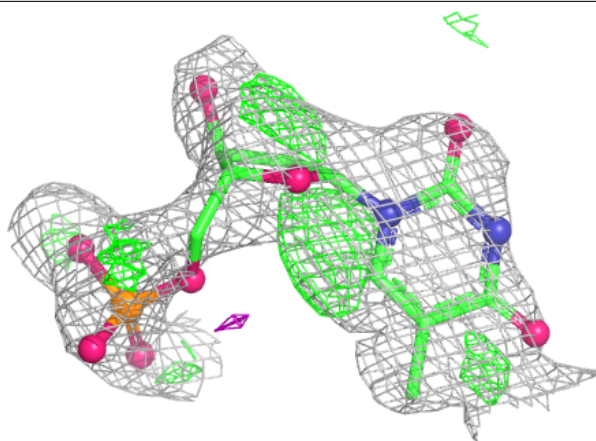
In the following table, the Atoms column lists the number of modelled atoms in the group and the number defined in the chemical component dictionary. The B-factors column lists the minimum, median, 95th percentile and maximum values of B factors of atoms in the group. The column labelled 'Q< 0.9' lists the number of atoms with occupancy less than 0.9.

Mol	Type	Chain	Res	Atoms	RSCC	RSR	B-factors(Å ²)	Q<0.9
3	TMP	A	409	21/21	0.58	0.63	31,38,43,44	21
4	MG	B	215	1/1	0.75	0.28	50,50,50,50	0
2	ACT	A	413	4/4	0.88	0.14	51,51,51,52	0
5	TYD	B	216	25/25	0.89	0.15	25,32,50,50	0
6	DPO	B	414	8/9	0.89	0.28	68,70,72,73	0
2	ACT	A	412	4/4	0.94	0.25	26,26,29,33	0

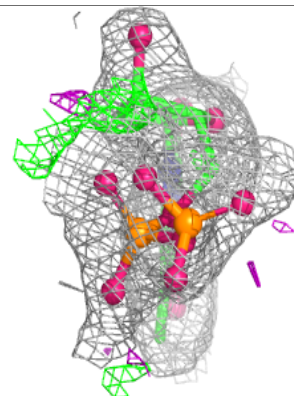
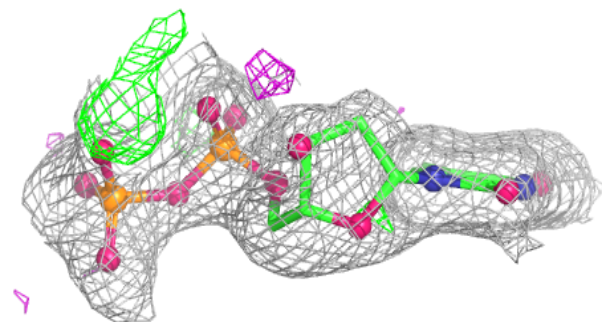
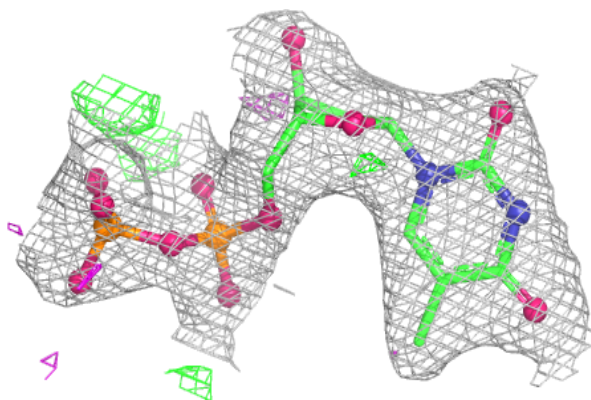
The following is a graphical depiction of the model fit to experimental electron density of all instances of the Ligand of Interest. In addition, ligands with molecular weight > 250 and outliers as shown on the geometry validation Tables will also be included. Each fit is shown from different orientation to approximate a three-dimensional view.

Electron density around TMP A 409:

$2mF_o-DF_c$ (at 0.7 rmsd) in gray
 mF_o-DF_c (at 3 rmsd) in purple (negative)
and green (positive)

**Electron density around TYD B 216:**

$2mF_o-DF_c$ (at 0.7 rmsd) in gray
 mF_o-DF_c (at 3 rmsd) in purple (negative)
and green (positive)



6.5 Other polymers [i](#)

There are no such residues in this entry.